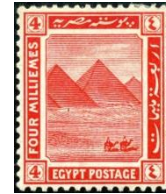




Universiteit
Leiden



African Studies Centre Leiden

African Postal Heritage

APH Paper nr 19, part 1

Ton Dietz

Tanzania Postmarks: Northern Tanzania

Version May 2017

Introduction

Postage stamps and related objects are miniature communication tools, and they tell a story about cultural and political identities and about artistic forms of identity expressions. They are part of the world's material heritage, and part of history. Ever more of this postal heritage becomes available online, published by stamp collectors' organizations, auction houses, commercial stamp shops, online catalogues, and individual collectors. Virtually collecting postage stamps and postal history has recently become a possibility. These working papers about Africa are examples of what can be done. But they are work-in-progress! Everyone who would like to contribute, by sending corrections, additions, and new area studies can do so by sending an email message to the APH editor: Ton Dietz (dietzaj@asc.leidenuniv.nl). You are welcome!

Disclaimer: illustrations and some texts are copied from internet sources that are publicly available. All sources have been mentioned. If there are claims about the copy rights of these sources, please send an email to asc@asc.leidenuniv.nl, and, if requested, those illustrations will be removed from the next version of the working paper concerned.

African Studies Centre Leiden
P.O. Box 9555
2300 RB Leiden
The Netherlands

| | |
|---------------|---|
| Telephone | +31-71-5273372 |
| E-mail | asc@asc.leidenuniv.nl |
| Website | http://www.ascleiden.nl |
| Facebook | www.facebook.nl/ascleiden |
| Twitter | www.twitter.com/ascleiden |
| Countryportal | http://countryportal.ascleiden.nl |

Illustrations cover page:

ASC Leiden postage stamp Nederland (2011): ©African Studies Centre Leiden

Cape of Good Hope postage stamp 1853:

http://upload.wikimedia.org/wikipedia/commons/thumb/7/7c/Cape_Triangular_Postage_Stamp.jpg/400px-Cape_Triangular_Postage_Stamp.jpg

Egypt postage stamp 1914:

https://upload.wikimedia.org/wikipedia/commons/4/4b/Post_Stamp_Egypt.jpg

Table of Contents

| | |
|---|-----------|
| Part 1: Northern Tanzania | 1 |
| Kagera | |
| Mwanza/Geita | |
| Shinyanga/Simiyu | |
| Mara | |
| Arusha/Manyara | |
| Kilimanjaro | |
| German Post Offices in Ruanda and Urundi | |
| Part 2: Tanzania Coast | 30 |
| Tanga | |
| Pwani | |
| Dar es Salaam | |
| Lindi | |
| Mtwara | |
| Part 3: Southern Tanzania | 73 |
| Kigoma | |
| Rukwa/Katavi | |
| Tabora | |
| Mbeya | |
| Singida | |
| Dodoma | |
| Iringa/Njombe | |
| Morogoro | |
| Ruvuma | |
| Other postmarks | |

Tanzania Postmarks

Part 1: Northern Tanzania: Kagera, Mwanza, Shinyanga/Simiyu, Mara, Arusha/Manyara, and Kilimanjaro



http://www.deutsche-schutzgebiete.de/webpages/Deutsch-Ostafrika_Karte_1912.jpg ;

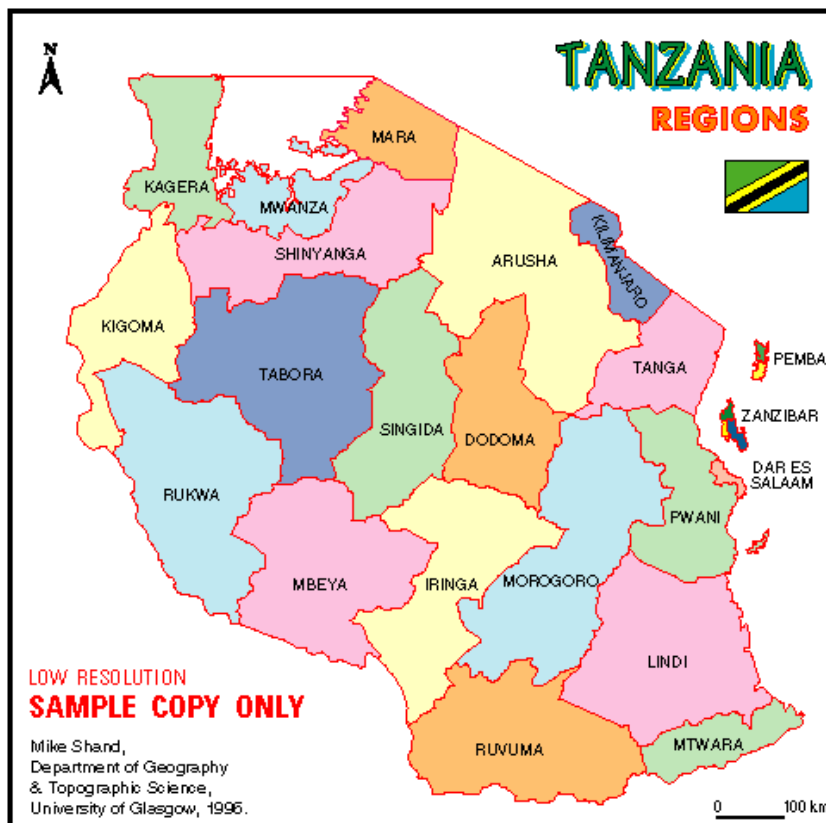
also see: <http://boma-kalender.de/8.html>

and Handwörterbuch des Postwesens, Wilhelm Küsgen, Paul Gerbeth, Heinrich Herzog, Laurenz Schneider, Gerhard Raabe, (Berlin, Julius Springer, 1927), p. 459-460:

https://books.google.nl/books?id=2B2gBgAAQBAJ&pg=PA460&lpg=PA460&dq=Mnyussi&source=bl&ots=g1t-etlwG6&sig=yZA1DBAJTy5AdhHTXOmcDpw4He8&hl=nl&sa=X&ved=0ahUKewi_fPQ8szTAhWYIYIAKHfFyCEw4FBDoAQgiMAA#v=onepage&q=Mnyussi&f=false

According to this Handbuch German Post Offices existed in:

Zanzibar (opened in 1890), Dar es Salam and Bagamoyo (4/10/1890), Tanga (5/5/1891), Lindi (17/5/1891), Kilwa (14/4/1892), Saadan I (25/5/1892), Mohorro (1/2/1894), Mikindani (30/10/1894), Bukoba, Kilimatinde, Kilossa, Langenburg, Moschi, Mpapua, Muanza and Tabora (all in 1895 or 1896), Ujiji and Iringa (both in 1898). Wilhelmstal, Songea and Wiedhafen (in 1899, Wiedhafen ended in 1912), Muhesa in 1900, Bismarckburg and Mahenje in 1901, Korogwe (in 1902), and Tschole (on Mafia Island), Salale, Amani, Aruscha, Buiko, Dodoma, Handeni, Kissenji, Kondoa-Irangi, Leganga, Mkalama, Mkumbura, Mnyussi, Mombo, Morogoro, Muaja, Musoma, Ngomeni, Ruanda, Schirati, Soga, Mubulu, Urundi/Usumbura, Utete, and Wiedhafen (all opened after 1902), and Ngengerere (1908-1912). Most of those more recent post offices were *Post Agenturen*, related to military forts/barracks. There were temporary postal activities in Kisaki, Marangu and Masinde, and additional telegraphic offices in Maurui, Mtingi, Mwule and Wugiri. The postal structure that was built under German rule would determine the postal structure of Tanzania.



<http://old.tanzaniaprojektet.se/F/maps/10.gif>



<https://www.coffeehunter.com/wp-content/uploads/2016/01/Map-of-Tanzania.jpg?x75696>

Current Regions: information:

https://en.wikipedia.org/wiki/Districts_of_Tanzania

Kagera Region



Current administrative structure: Biharamulo District Council, Bukoba District Council, Bukoba Municipal Council, Karagwe District Council, Kyerwa District Council, Missenyi District Council, Muleba District Council, Ngara District Council



[http://www.kut-stamps.com/Postmarks/Tanganyika_KGV/KUT%20650\(2\).jpg](http://www.kut-stamps.com/Postmarks/Tanganyika_KGV/KUT%20650(2).jpg)

Bukoba (German Post Office after 1895)

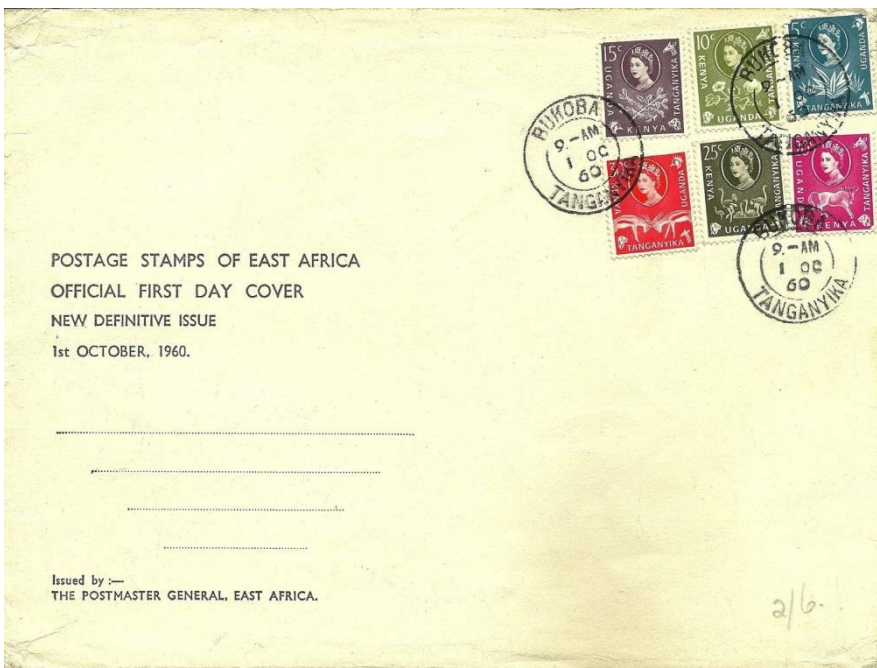


[http://www.germanpostalhistory.com/php/viewitem.php?itemid=69063&germany%20cover=search &](http://www.germanpostalhistory.com/php/viewitem.php?itemid=69063&germany%20cover=search&)



[http://www.kut-stamps.com/Postmarks/Tanganyika_KGV/KUT%20650\(4\).jpg](http://www.kut-stamps.com/Postmarks/Tanganyika_KGV/KUT%20650(4).jpg): Bukoba

[http://i.ebayimg.com/00/s/NTAwWDQ2OQ==/z/lg8AAOSwpzdWr8Dr/\\$_12.JPG](http://i.ebayimg.com/00/s/NTAwWDQ2OQ==/z/lg8AAOSwpzdWr8Dr/$_12.JPG)



[http://i.ebayimg.com/00/s/MTlwOVgxNjAw/z/TuMAAOSweW5U6t1V/\\$_57.JPG](http://i.ebayimg.com/00/s/MTlwOVgxNjAw/z/TuMAAOSweW5U6t1V/$_57.JPG)

Mwanza Region



Current administrative structure: Ilemela Municipal Council, Kwimba District Council, Magu District Council, Misungwi District Council, Nyamagana Municipal Council, Sengerema District Council, Ukerewe District Council

Muansa/Muanza/Mwanza (German Post Office after 1895)



<http://www.germanpostalhistory.com/inventory/thumbnails/78805t.jpg>

<http://www.germanpostalhistory.com/php/viewitem.php?itemid=69508&germany%20cover=search&>



<http://www.germanpostalhistory.com/inventory/thumbnails/78808t.jpg>

<https://encrypted-tbn3.gstatic.com/images?q=tbn:ANd9GcRSVCZuSsGw7Ocj5R6yS1iOyszpKNUIP16TjSo-KCxoyQtBT2mD>

[http://www.kut-stamps.com/Tanganyika/GEA_SG23_used at MUANZA.jpg](http://www.kut-stamps.com/Tanganyika/GEA_SG23_used_at_MUANZA.jpg)



[http://www.kut-stamps.com/Tanganyika_Postmarks_and_Covers/DSM_MWANZA_TPO\(1\).jpg](http://www.kut-stamps.com/Tanganyika_Postmarks_and_Covers/DSM_MWANZA_TPO(1).jpg)

[http://i.ebayimg.com/00/s/MT10N1gxNTQ3/z/PSsAAOSwc1FXYZwJ/\\$_35.JPG](http://i.ebayimg.com/00/s/MT10N1gxNTQ3/z/PSsAAOSwc1FXYZwJ/$_35.JPG)



http://images-01.delcampe-static.net/img_thumb/auction/000/370/644/408_001.jpg



<http://www.stampboards.com/viewtopic.php?f=17&t=695&start=500>

Mantare Mwanza



http://www.ebay.ie/sch/i.html?_pgn=1&LH_PrefLoc=2&_ftv=5&isRefine=false&_nkw=uganda

Ngudu in Mwanza



https://www.picclickimg.com/d/w1600/pict/382070402726_/KENYA-UGANDA-TANGANYIKA-POSTMARK-NGUDU-Scarce.jpg

Geita Region



Current administrative structure: Bukombe District Council, Chato District Council, Geita Town Council & Geita District Council, Mbogwe District Council, Nyang'hwale District Council

Geita



<http://www.postmarks.co.za> 2x



<http://www.postmarks.co.za>

Shinyanga Region



Current administrative structure: Kahama Town Council, Kahama District Council, Kishapu District Council, Shinyanga District Council, Shinyanga Municipal Council

Shinyanga

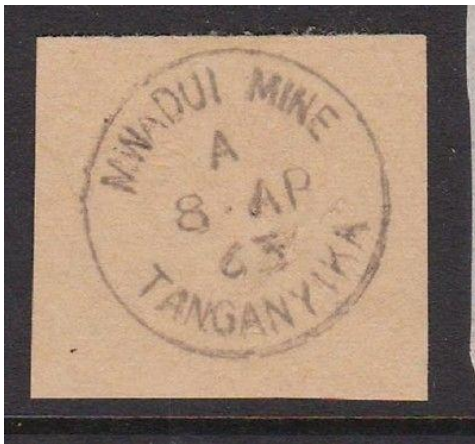


http://www.kut-stamps.com/Tanganyika_Postmarks_and_Covers/SHINVANGA.jpg



http://upload.wikimedia.org/wikipedia/en/thumb/8/88/Stamp_TZ_1965_1sh-500px.jpg/440px-Stamp_TZ_1965_1sh-500px.jpg

Mwadui (diamond) mine



https://www.picclickimg.com/d/l400/pict/381763762856_/Kenya-uganda-tanganyika-Postmark-Mwadui-Mine.jpg

Simiyu Region



Current administrative structure: Bariadi District Council, Busega District Council, Itilima District Council, Maswa District Council, Meatu District Council

Mara Region



Current administrative structure: Bunda District Council, Butiama District Council, Musoma District Council, Musoma Municipal Council, Rorya District Council, Serengeti District Council, Tarime District Council

Musoma (German Post Office after 1902)



<http://www.iusc.org/images/MusomaB.jpg>



Ebay, no other information



http://thumbs3.picclick.com/d/l400/pict/381792573322_/KENYA-UGANDA-TANGANYIKA-POSTMARK-KIABAKARI-MUSOMA-Not-in-Proud.jpg

Schirati (German Post Office after 1902)



<http://www.germanpostalhistory.com/php/viewitem.php?itemid=69473&germany%20cover=search&>

Arusha Region



Current administrative structure: Meru District Council, Arusha District Council, Arusha City Council, Karatu District Council, Longido District Council, Monduli District Council, Ngorongoro District Council

Leganga = Leudorf, near Meru (German Post Office after 1902)



[http://www.delcampe.net/items?catLists\[0\]=2678&language=G&searchOptionForm\[searchTIdCountry\]=net&searchString=&page=3&useAsDefault=](http://www.delcampe.net/items?catLists[0]=2678&language=G&searchOptionForm[searchTIdCountry]=net&searchString=&page=3&useAsDefault=)



https://www.picclickimg.com/d/w1600/pict/332006964808_/K-256-DOA-Leudorf-Leganga-am-Meru.jpg :
"DOA Leudorf (Leganga) am Meru, 1917 gelaufen".

"Das ostafrikanische Besiedlungskomitee der Deutschen Kolonialgesellschaft (s.d.) gründete hier 1906 eine Ansiedlung von Deutsch-Russen; reichsdeutsche Farmer kamen allmählich hinzu."

<http://www.enzyklo.de/Begriff/Leudorf>

Aruscha/Arusha (German Post Office after 1902)



<https://www.cherrystoneauctions.com/auctionscans200811/1696.jpg>



<http://www.kut-stamps.com/Tanganyika Postmarks and Covers/ARHUSA.jpg>



[http://i.ebayimg.com/00/s/Nzg4WDExOTE=/z/UDwAAOSwTapV4bqX/\\$ 57.JPG](http://i.ebayimg.com/00/s/Nzg4WDExOTE=/z/UDwAAOSwTapV4bqX/$ 57.JPG)



[http://i.ebayimg.com/00/s/OTQxWDE2MDA=/z/u5UAAOSwdGFYz-I9/\\$ 57.JPG](http://i.ebayimg.com/00/s/OTQxWDE2MDA=/z/u5UAAOSwdGFYz-I9/$ 57.JPG)

Usa River (near Arusha)



[http://www.kut-stamps.com/Tanganyika Postmarks and Covers/USA RIVER.jpg](http://www.kut-stamps.com/Tanganyika_Postmarks_and_Covers/USA_RIVER.jpg)

Oldeani



[http://i.ebayimg.com/00/s/MTA3M1gxNjAw/z/edAAAOSwPgxFVw/\\$_57.JPG](http://i.ebayimg.com/00/s/MTA3M1gxNjAw/z/edAAAOSwPgxFVw/$_57.JPG)



<http://www.michael-hamilton.com/images/TAN58343.jpg>

Manyara Region



Current administrative structure: Babati Town Council, Babati District Council, Hanang District Council, Kiteto District Council, Mbulu District Council, Simanjiro District Council

Babati

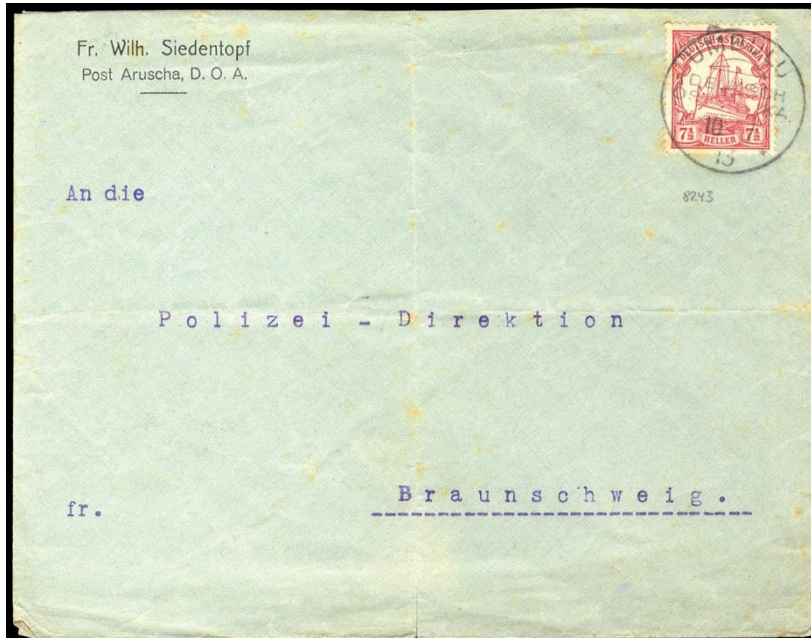


<http://www.mikewhiteuk.com/images/4303.jpg>



<https://encrypted-tbn2.gstatic.com/images?q=tbn:ANd9GcT9CjsRDCIOgJY73yXCAPnCKM80Vbvandoz1fpulnWa8XTHNniZ>

Umbulu/Mbulu (German Post Office after 1902)

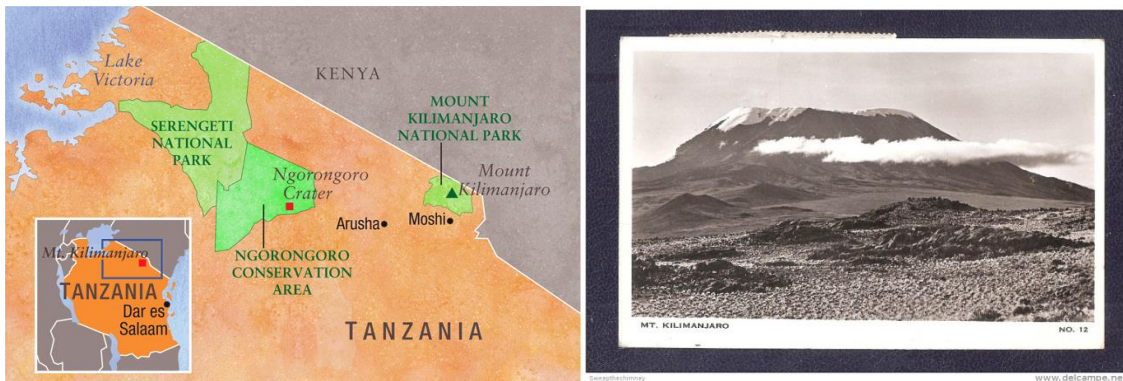


<https://www.cherrystoneauctions.com/auctionscans201012/42.jpg>



<https://d2s03hrlw8s2zb.cloudfront.net/modules/auctions/23/pics/medium/9c2b0afc0da15a8bed8aa0af312ab28c58efb330.jpg>

Kilimanjaro Region



http://alumni.stanford.edu/content/images/travel-study/2016/maps/lg_map_kilimanjaro1.gif

http://images.delcampe.com/img_large/auction/000/255/070/404_002.jpg?v=3

Current administrative structure: Moshi District Council, Moshi Municipal Council, Mwanza District Council, Rombo District Council, Same District Council, Siha District Council



http://www.kut-stamps.com/Postmarks/TPO/KILIMANJARO_TPO_UP.jpg : Kilimanjaro Travelling Post Office

Moschi/Moshi (German Post Office from 1896 onwards)



<http://thumbs.ebaystatic.com/images/g/X8wAAOSwjDZYjKa3/s-l225.jpg> : "Moschi"



<http://thumbs.ebaystatic.com/images/g/bLgAAOSwXeJYId9y/s-l225.jpg>



<http://thumbs.ebaystatic.com/images/g/YOAAAOSwFqjWIOuM/s-l225.jpg>



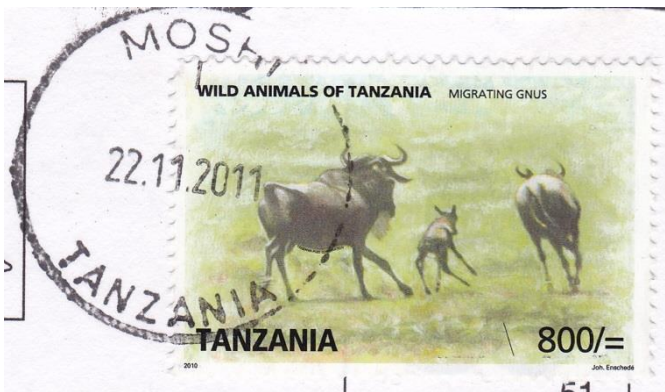
<http://i.ebayimg.com/images/g/raAAAOSwQjZXP5dz/s-l300.jpg>



<https://encrypted-tbn3.gstatic.com/images?q=tbn:ANd9GcTtED9GU1LKkuJhGEBz3UaEMmiwNe618nC7SjdwOghkFUIGdMkF>



http://thumbs3.picclick.com/d/l400/pict/381792541530_/KENYA-UGANDA-TANGANYIKA-POSTMARK-KIBO-MOSHI-Skeleton.jpg

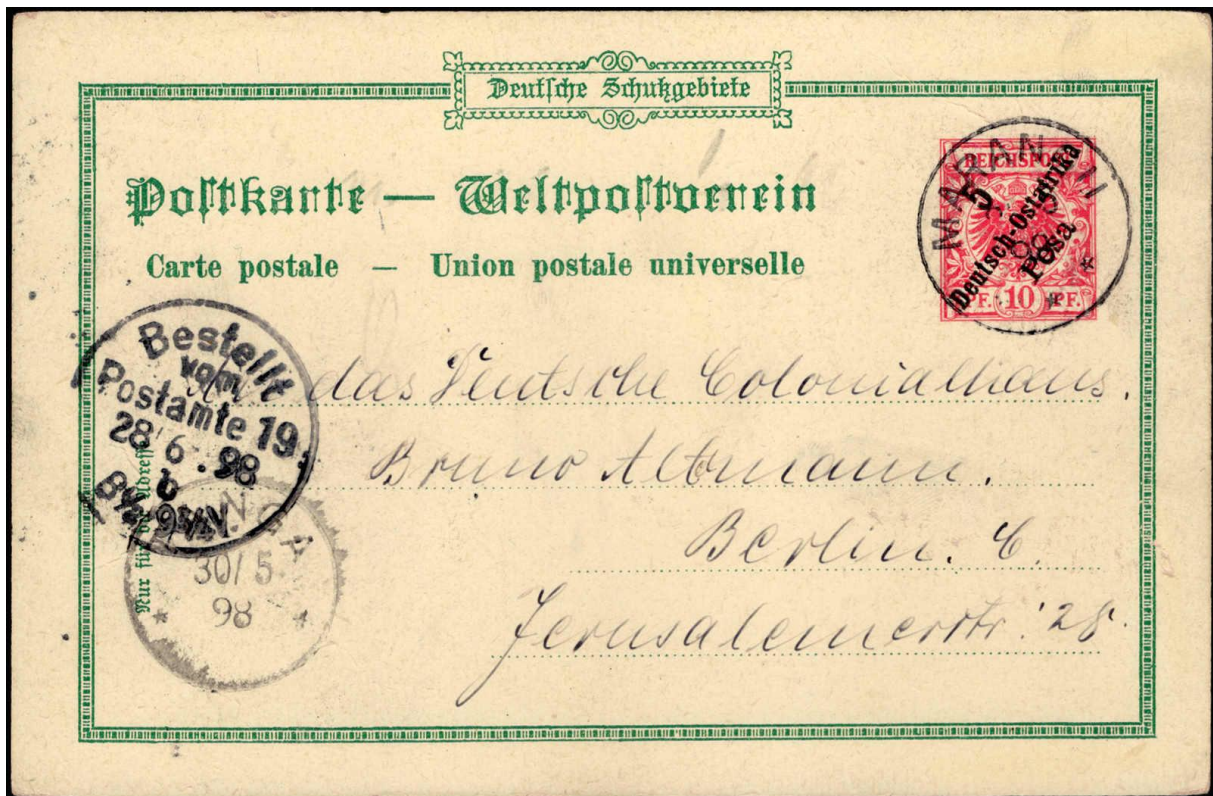


<https://deltiolog.files.wordpress.com/2011/12/tanzaniastamp.jpg>

Marangu (temporary German Post Office ca 1897-1900)



<http://thumbs.ebaystatic.com/images/g/lnwAAOSwpkFY44qF/s-l225.jpg>



<http://pictures.philasearch.com/A09097/S20/5712.jpg>



<http://i.ebayimg.com/thumbs/images/g/07wAAOSwTZ1XmiJG/s-l225.jpg>

German Post Offices in Ruanda and Urundi

Kissenji (= Gisenyi, Lake Kivu) (after 1902)



<http://philabild.de/nordphila/bilder/xxl/0119069.jpg>

[http://www.delcampe.net/items?catLists\[0\]=2678&language=G&searchOptionForm\[searchTldCountry\]=net&searchString=&page=3&useAsDefault=](http://www.delcampe.net/items?catLists[0]=2678&language=G&searchOptionForm[searchTldCountry]=net&searchString=&page=3&useAsDefault=)

https://encrypted-tbn3.gstatic.com/images?q=tbn:ANd9GcSafjY8_sclFQFHLJeQTsAX1jfoOxV0t4durfNNOZ_WVtoB4gH-

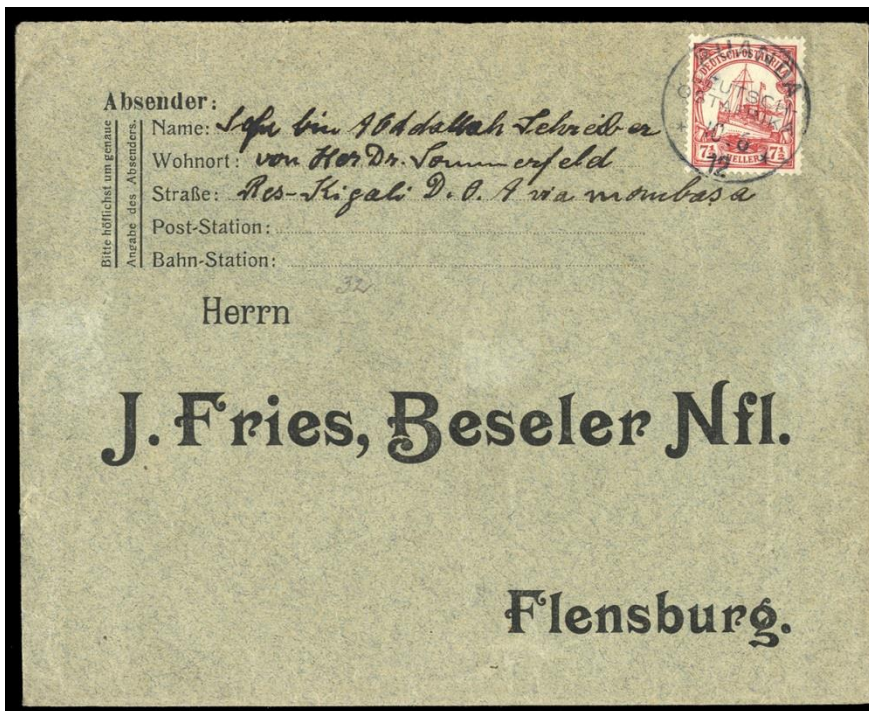
Ruanda (after 1902)



<https://cdn.philasearch.com/A09228/E05009/v0500912500362.jpg>



[http://www.germanpostalhistory.com/php/viewitem.php?itemid=69020&germany%20cover=search
&](http://www.germanpostalhistory.com/php/viewitem.php?itemid=69020&germany%20cover=search&)



<https://www.cherrystoneauctions.com/auctionscans201012/40.jpg>

Urundi (German Post Office after 1902):



<https://d2s03hrlw8s2zb.cloudfront.net/modules/auctions/23/pics/medium/61fe547ada55dec0309ad3e9a80d5bd68eb1f5fd.jpg> : ""URUNDI DOA 2....13", recht klar auf loser Marke Kaiseryacht 15 H. violettultramarin, Pracht, sehr seltener Stempel".

Usumbura (German Post Office after 1902)



[http://www.delcampe.net/items?catLists\[0\]=2678&language=G&searchOptionForm\[searchTldCountry\]=net&searchString=&page=3&useAsDefault=](http://www.delcampe.net/items?catLists[0]=2678&language=G&searchOptionForm[searchTldCountry]=net&searchString=&page=3&useAsDefault=)