



Universiteit
Leiden
The Netherlands

Kenya: Central Kenya postmarks

Dietz, A.J.

Citation

Dietz, A. J. (2017). Kenya: Central Kenya postmarks. *African Postal Heritage (Aph) Papers*. Retrieved from <https://hdl.handle.net/1887/52079>

Version: Not Applicable (or Unknown)

License: [Leiden University Non-exclusive license](#)

Downloaded from: <https://hdl.handle.net/1887/52079>

Note: To cite this publication please use the final published version (if applicable).



Universiteit
Leiden



African Studies Centre Leiden

African Postal Heritage

APH Paper nr 17, part 6

Ton Dietz

Kenya: Central Kenya Postmarks

Version May 2017

Introduction

Postage stamps and related objects are miniature communication tools, and they tell a story about cultural and political identities and about artistic forms of identity expressions. They are part of the world's material heritage, and part of history. Ever more of this postal heritage becomes available online, published by stamp collectors' organizations, auction houses, commercial stamp shops, online catalogues, and individual collectors. Virtually collecting postage stamps and postal history has recently become a possibility. These working papers about Africa are examples of what can be done. But they are work-in-progress! Everyone who would like to contribute, by sending corrections, additions, and new area studies can do so by sending an email message to the APH editor: Ton Dietz (dietzaj@asc.leidenuniv.nl). You are welcome!

Disclaimer: illustrations and some texts are copied from internet sources that are publicly available. All sources have been mentioned. If there are claims about the copy rights of these sources, please send an email to asc@asc.leidenuniv.nl, and, if requested, those illustrations will be removed from the next version of the working paper concerned.

African Studies Centre Leiden
P.O. Box 9555
2300 RB Leiden
The Netherlands

Telephone	+31-71-5273372
E-mail	asc@asc.leidenuniv.nl
Website	http://www.ascleiden.nl
Facebook	www.facebook.nl/ascleiden
Twitter	www.twitter.com/ascleiden
Countryportal	http://countryportal.ascleiden.nl

Illustrations cover page:

ASC Leiden postage stamp Nederland (2011): ©African Studies Centre Leiden

Cape of Good Hope postage stamp 1853:

http://upload.wikimedia.org/wikipedia/commons/thumb/7/7c/Cape_Triangular_Postage_Stamp.jpg/400px-Cape_Triangular_Postage_Stamp.jpg

Egypt postage stamp 1914:

https://upload.wikimedia.org/wikipedia/commons/4/4b/Post_Stamp_Egypt.jpg

Table of Contents

Part 1	1
Imperial British East Africa Company 1890-1895	
Part 2	52
British East Africa 1895-1902	
Part 3	111
British East Africa and Uganda 1902-1921	
Part 4	152
Kenya and Uganda 1922-1935	
Part 5	172
East Kenya postmarks	
Part 6	248
Central Kenya postmarks	
Part 7	295
West Kenya postmarks	

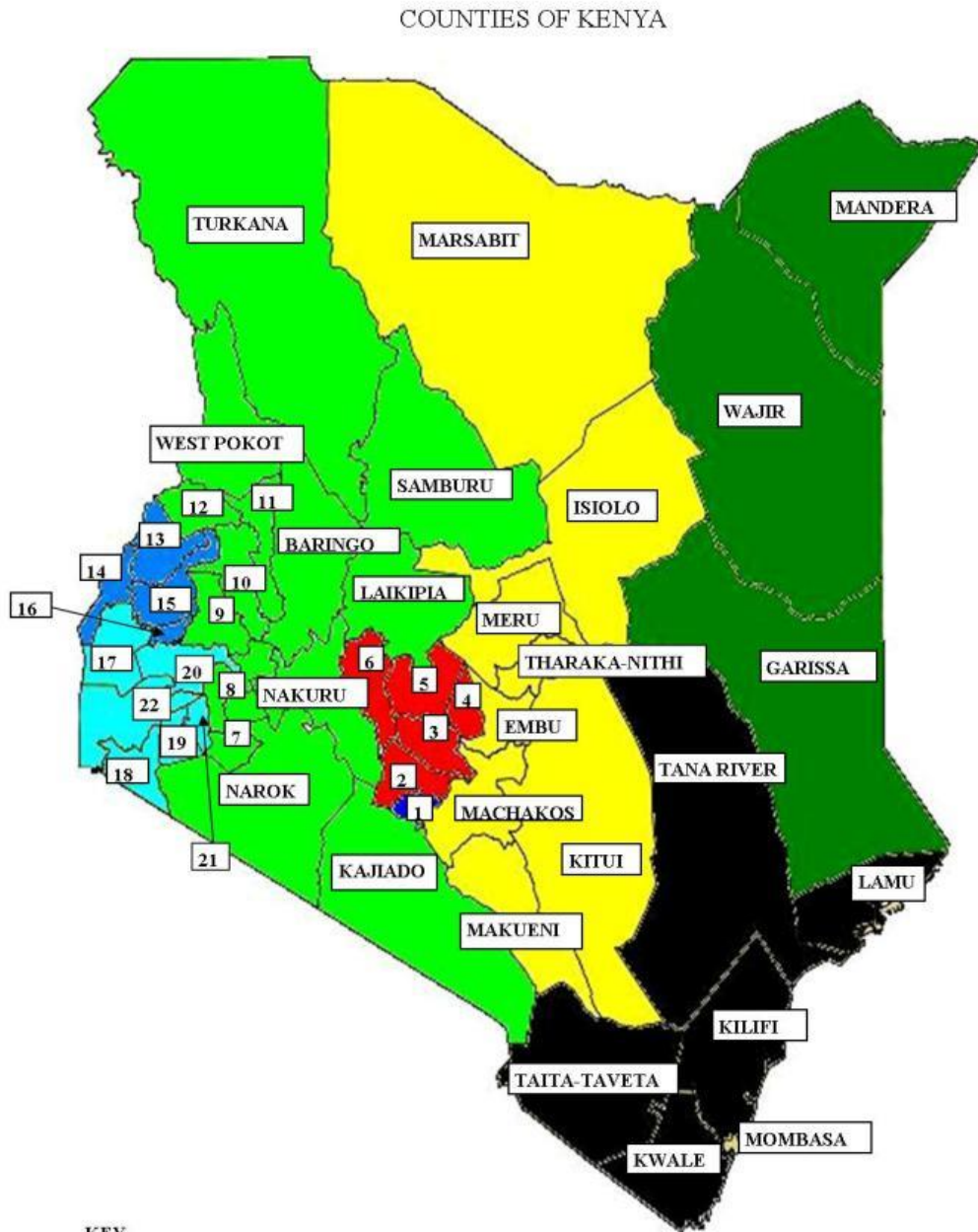
Uganda before 1902 and Uganda postmarks see APH 18

Tanganyika and Tanzania postmarks see APH 19 (German East Africa and follow up see APH 3)

Zanzibar see APH 20

Kenya, Uganda and Tanganyika 1935-1963 see APH 21

Postmarks CENTRAL KENYA



KEY

- | | | | |
|--------------|---------------------|--------------|--------------|
| 1. NAIROBI | 8. KERICHO | 15. KAKAMEGA | 22. HOMA BAY |
| 2. KIAMBU | 9. TRANS NZOIA | 16. VIHIGA | |
| 3. MURANG'A | 10. UASIN GISHU | 17. SIAYA | |
| 4. KIRINYAGA | 11. ELGEYO-MARAKWET | 18. MIGORI | |
| 5. NYERI | 12. NANDI | 19. KISII | |
| 6. NYANDARUA | 13. BUNGOMA | 20. KISUMU | |
| 7. BOMET | 14. BUSIA | 21. NYAMIRA | |

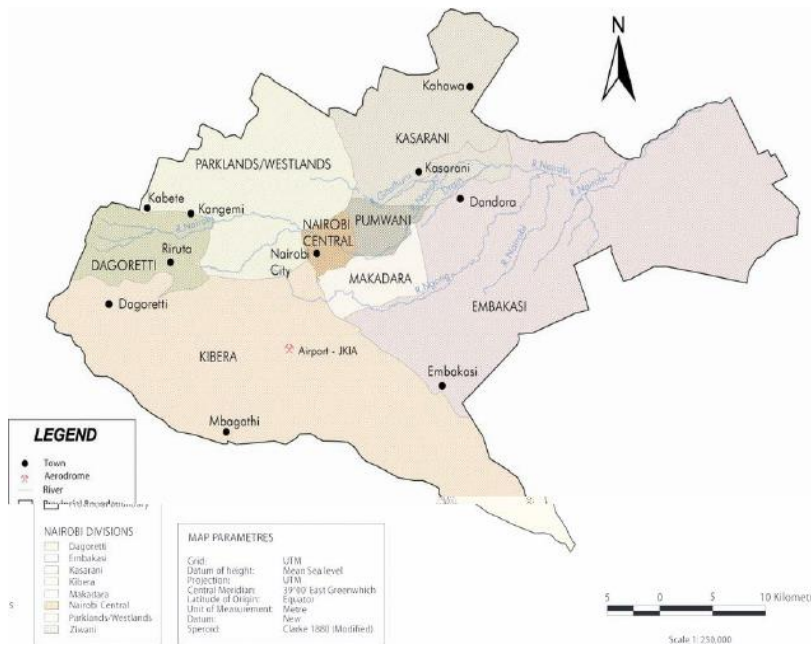
<https://i2.wp.com/www.howtodiys.com/wp-content/uploads/2016/07/kenya-county-map-1.jpg?resize=696%2C990> ; however: 9 = Nandi and 12 = Trans Nzoia!

Maps: Google (if otherwise: indicated)

Postmarks CENTRAL KENYA

Nairobi

Nairobi County



https://www.researchgate.net/profile/Jeremiah_Masime/publication/255483390/figure/fig1/AS:297922005618693@1448041549862/Figure-1-The-map-of-Nairobi-County.png

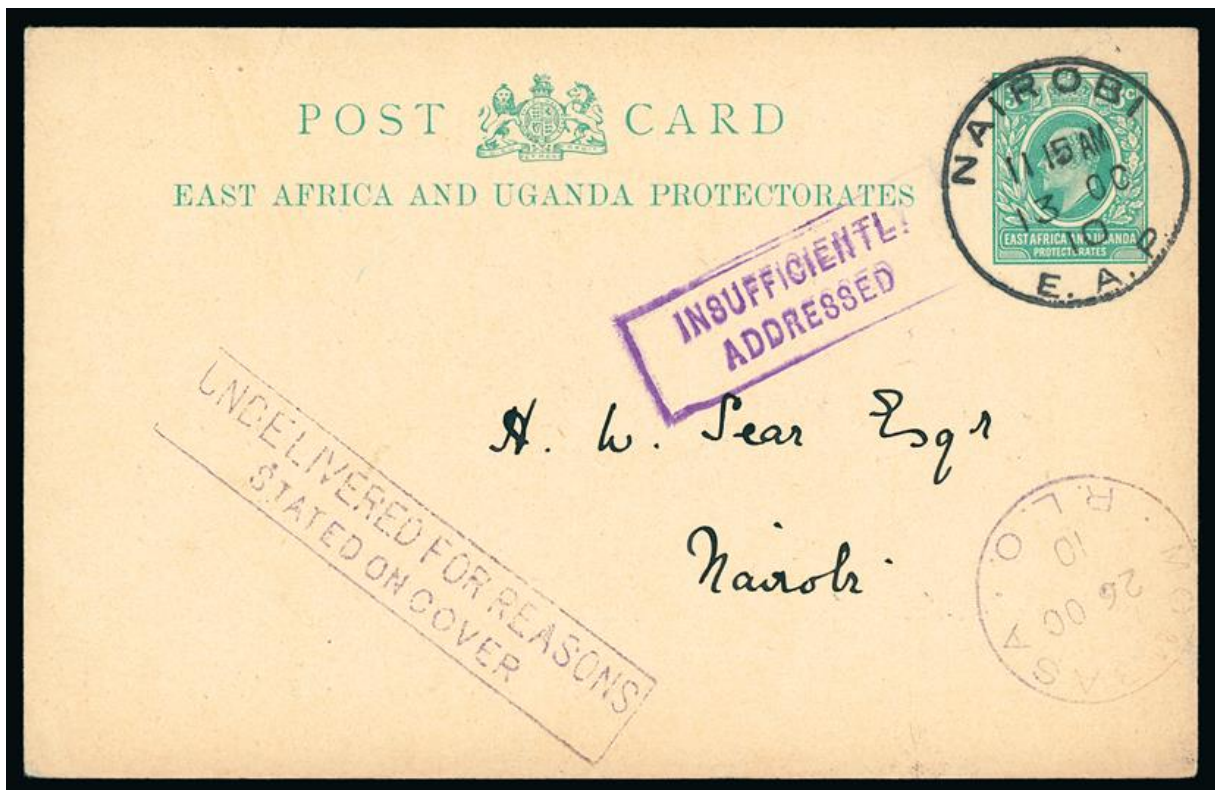


https://upload.wikimedia.org/wikipedia/commons/thumb/9/9a/Nairobi_18_99.jpg/220px-Nairobi_18_99.jpg: "How Nairobi looked in 1899, just a bunch of Tents and then a Railway Depot".

Nairobi



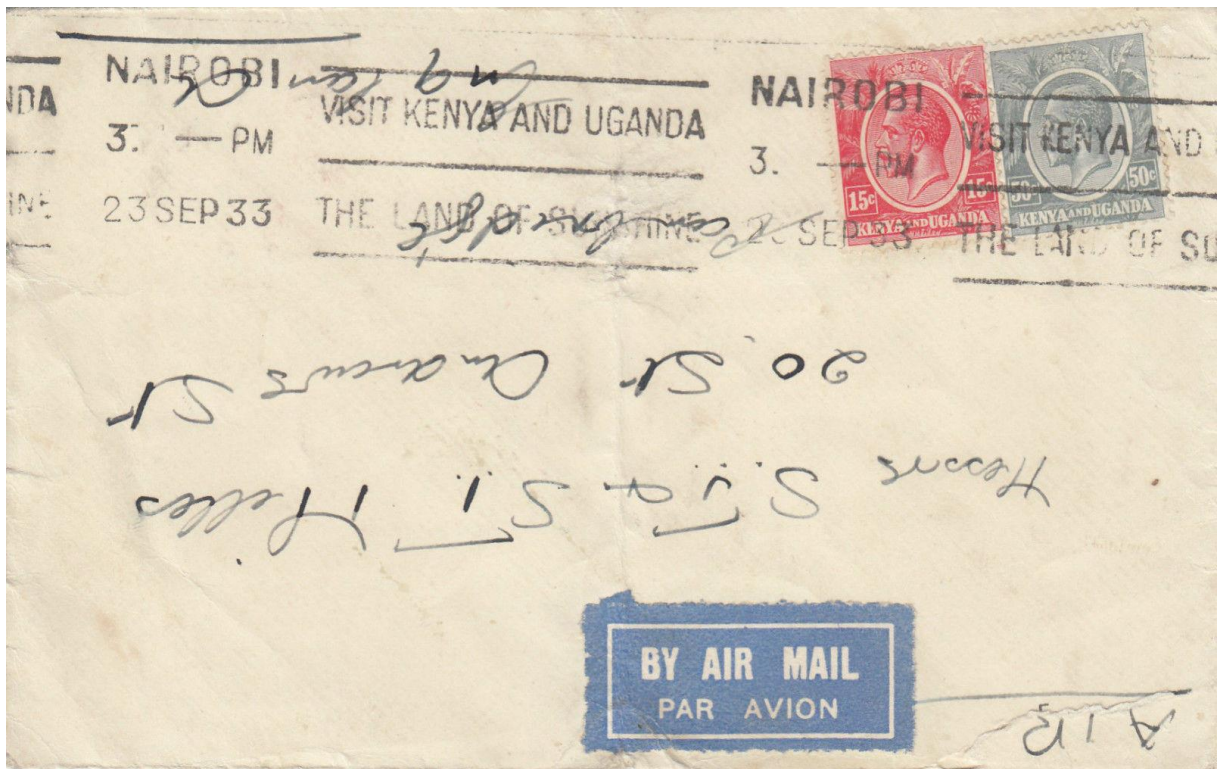
http://www.kut-stamps.com/KUT_Stamps/KEVII/SG27_used.jpg



http://www.grosvenorauctions.com/dyn_pages/stamp_images/115/5624.jpg



[http://i.ebayimg.com/00/s/MzkzWDgwMA==/z/ovsAAOSwvg9XZD~5/\\$_57.JPG](http://i.ebayimg.com/00/s/MzkzWDgwMA==/z/ovsAAOSwvg9XZD~5/$_57.JPG)



[http://i.ebayimg.com/00/s/MTAxM1gxNjAw/z/UUEAAOSwZtJW89d2/\\$_57.JPG](http://i.ebayimg.com/00/s/MTAxM1gxNjAw/z/UUEAAOSwZtJW89d2/$_57.JPG)



<https://stampauctionnetwork.com/f/135/160.jpg>



[http://i.ebayimg.com/00/s/MTE3M1gxNjAw/z/m4cAAOSw0vBUdUHg/\\$_12.JPG](http://i.ebayimg.com/00/s/MTE3M1gxNjAw/z/m4cAAOSw0vBUdUHg/$_12.JPG)



<http://thumbs1.ebaystatic.com/images/g/k18AAOSwuAVWzuPY/s-l225.jpg>



<http://thumbs.ebaystatic.com/images/g/6V8AAOSwdzVXqUIT/s-l225.jpg>



https://www.picclickimg.com/d/l400/pict/132059061446_/1954-Nairobi-Kenya-KUT-cover-to-England.jpg



[http://i.ebayimg.com/00/s/ODUwWDExMzc=/z/n1gAAOSwvKtY-PQr/\\$_57.JPG](http://i.ebayimg.com/00/s/ODUwWDExMzc=/z/n1gAAOSwvKtY-PQr/$_57.JPG)



[http://i.ebayimg.com/00/s/MTA0N1gxNjAw/z/76oAAOSwtfhYqzd/\\$_57.JPG](http://i.ebayimg.com/00/s/MTA0N1gxNjAw/z/76oAAOSwtfhYqzd/$_57.JPG)



<http://thumbs.ebaystatic.com/images/g/TpkAAOSwo4pYgRsJ/s-l225.jpg>

Bohra Road Nairobi



<http://thumbs.ebaystatic.com/images/g/9yMAAOSwoudW4DVy/s-l225.jpg>



<http://www.postmarks.co.za/images/Bohra%20road%201.jpg> : "BOHRA ROAD NAIROBI. Branch Office of Nairobi. Opened 1953 to 1963".

Dagoreti Corner Nairobi

<http://www.postmarks.co.za/PH%20Kenya%20Broderick%20Falls%20to%20Duke%20Street.htm> :
"DAGORETTI CORNER. 19.08.1952 to 1953. Nairobi".

Dagoreti Market Nairobi

<http://www.postmarks.co.za/PH%20Kenya%20Broderick%20Falls%20to%20Duke%20Street.htm> :
"DAGORETTI MARKET. 01.11.1956 to 31.05.1962. Nairobi".

Duke Street Nairobi



<http://www.postmarks.co.za/images/Duke%20Street%201944.jpg>: "DUKE STREET NAIROBI.
Renamed from NAIROBI TSO. 20.02.1942 to 30.07.1955".

<http://www.postmarks.co.za/images/Duke%20Street%201949%202.jpg>

Eastleigh Nairobi



<http://www.postmarks.co.za/images/Eastleigh%201962.jpg>: "EASTLEIGH NAIROBI. 06.10.1956 to
11.12.1963. Nairobi branch office".



<http://i.ebayimg.com/images/g/4vcAOSwp5JWZZQ~/s-l300.gif>

Embakasi Nairobi



<http://www.postmarks.co.za/images/Embakasi%201961.jpg>: “EMBAKASI. 16.01.1958 to 11.12.1963. New Nairobi Airport”.

Enterprise Road Nairobi



<http://www.postmarks.co.za/images/Enterprise%20Road%20Kenya.jpg>: “ENTERPRISE ROAD NAIROBI. 15.03.1960 to 11.12.1963..”.

Ghalib Road Nairobi



<http://www.postmarks.co.za/images/Ghalib%20Road%201958.jpg>: "GHALIB ROAD NAIROBI.
21.04.1956 to 11.12.1963".

Government Road Nairobi

<http://www.postmarks.co.za/PH%20Kenya%20Galitu%20to%20Isiolo.htm> : "GVT RD NAIROBI.
13.01.1920 to 20.12.1921".

Gurdwara Road Nairobi



Ebay

Hardinge Street Nairobi



<http://thumbs.ebaystatic.com/images/g/WQcAAOSw-0xYiP1T/s-l225.jpg>

Kabete Nairobi



<http://www.postmarks.co.za/images/Kabete%20DR%201940.jpg>: "KABETE (NAIROBI). 22.08.1921 to 11.12.1963. 5 miles from Nairobi".

<http://www.postmarks.co.za/images/Kabete%201956.jpg>

<http://www.postmarks.co.za/images/Kabete%201963.jpg>



<http://www.danica-janeckova.com/images/3068.jpg>

Kahawa Nairobi

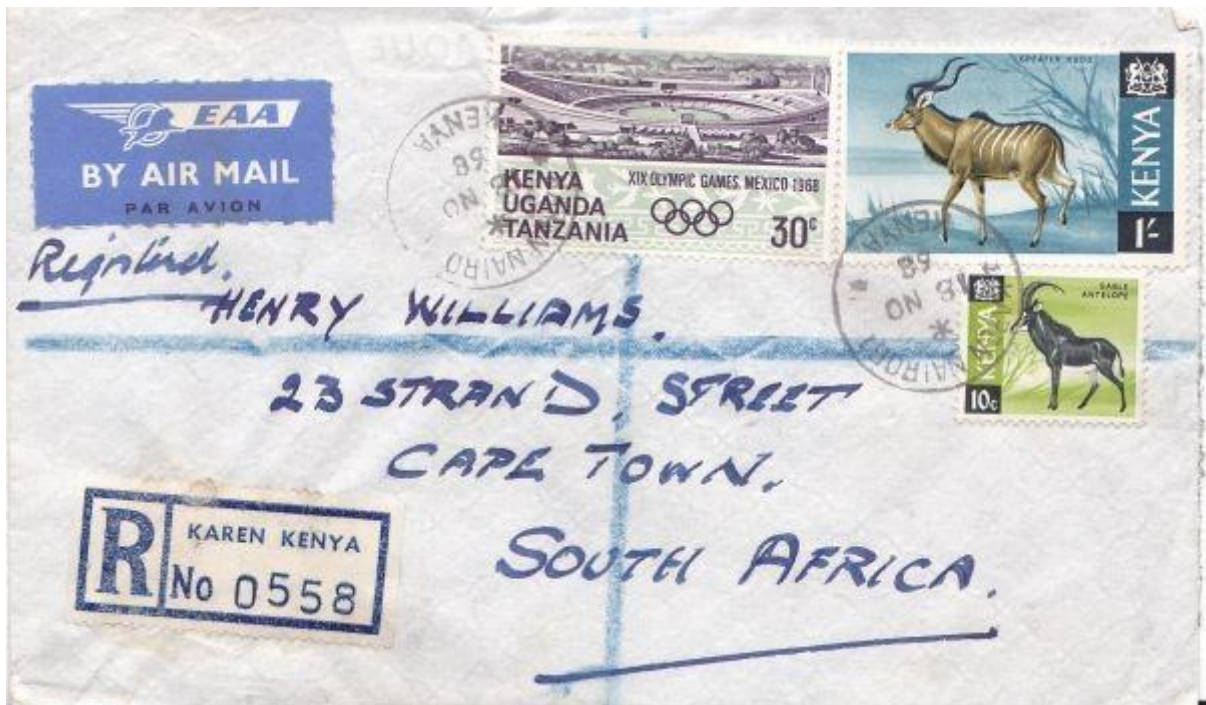


<http://www.postmarks.co.za/images/Kahawa%201931.jpg>: "KAHAWA (NAIROBI). 01.08.1922 to 11.12.1963".

Karen Nairobi



<http://www.postmarks.co.za/images/Karen%201958.jpg>: "KAREN (NAIROBI). 28.12.1956 to 11.12.1963. Near Nairobi".



<http://clintongoslin.com/wp-content/uploads/2016/11/BN508-600x350.jpg>

Kariobangi Nairobi



Ebay

Langata Nairobi



<http://www.postmarks.co.za/images/Langata%20Nairobi%201.jpg>: "LANGATA NAIROBI. 01.02.1957 to 11.12.1963".

Lavington Nairobi



<http://www.postmarks.co.za/images/Lavington%20Nairobi%201.jpg>: "LAVINGTON NAIROBI. 01.06.1960 to 11.12.1963".

Lower Kabete Nairobi

<http://www.postmarks.co.za/PH%20Kenya%20Limuru%20to%20Lumbwa.htm> : "LOWER KABETE. 11.04.1947 to 11.12.1963. 6km from Nairobi".

Maji Mazuri Nairobi



<https://encrypted-tbn1.gstatic.com/images?q=tbn:ANd9GcR0QBQWzfc0l7H7zNcYPxxfK5E0Jrw8JZ1aiGIbu6h4Ymcyt0IfuQ>

also: <http://www.postmarks.co.za/images/Maji%20Mazuri%201947.jpg>: "MAJI MAZURI. 15.11.1925 to 11.12.1963. On main line".

Makadara Nairobi

<http://www.postmarks.co.za/PH%20Kenya%20Macalder%20to%20Makuyu.htm>: "MAKADARA NAIROBI. 01.12.1955 to 06.03.1958".

Makongeni Nairobi



<http://www.postmarks.co.za/images/Makongeni%20TSO.jpg>: "MAKONGENI NAIROBI. 1948 to 11.12.1963".

Mbari ya Njiku (Nairobi?)



<http://thumbs.ebaystatic.com/images/g/fDYAAOSwIWVY~72i/s-l225.jpg>

Mbagathi Nairobi

<http://www.postmarks.co.za/PH%20Kenya%20Maseno%20to%20Meru.htm>: "MBAGATHI NAIROBI. 01.09.1962 to 11.12.1963".

Mitchell Park



<http://www.postmarks.co.za/images/Mitchell%20Park.jpg>: "MITCHELL PARK NAIROBI. 09.06.1952 to 30.09.1963".

1960 (1st October)
Perf 15 x 14 (5c to 65c), 14 others

5c to 5/- First Day Cover

MITCHELL PARK/KENYA 1 OC 1960 to Nakuru

Mitchel Park now renamed Jamburi Park
was the venue for an annual Agricultural Show
Mitchel Park postmarks were used at these shows from 1952



[http://www.stampsoftheworld.co.uk/w/images/thumb/7/77/Kenya_Uganda_Tanganyika_1890 -
_1964_bsa.jpg/475px-Kenya_Uganda_Tanganyika_1890 - 1964_bsa.jpg](http://www.stampsoftheworld.co.uk/w/images/thumb/7/77/Kenya_Uganda_Tanganyika_1890_-_1964_bsa.jpg/475px-Kenya_Uganda_Tanganyika_1890_-_1964_bsa.jpg)

Nairobi Airport



<http://www.postmarks.co.za/images/Nairobi%20Airport%201953.jpg>: "NAIROBI AIRPORT.
17.05.1948 to 26.05.1956".

Railway HQ Nairobi



<http://thumbs.ebaystatic.com/images/g/z7kAAOSwls5Y67ZF/s-l225.jpg>

Temple Road Nairobi



[http://i.ebayimg.com/00/s/OTQxWDE2MDA=/z/yx8AAOSwA3dYg0~T/\\$_57.JPG](http://i.ebayimg.com/00/s/OTQxWDE2MDA=/z/yx8AAOSwA3dYg0~T/$_57.JPG)

Victoria Street Nairobi



<http://thumbs.ebaystatic.com/images/g/TfgAAOSwQYZWwE3B/s-l225.jpg>

Wamunya (Nairobi?)



<http://thumbs.ebaystatic.com/images/g/ytEAAOSwRUhY~5Ld/s-l225.jpg>

Westlands Nairobi



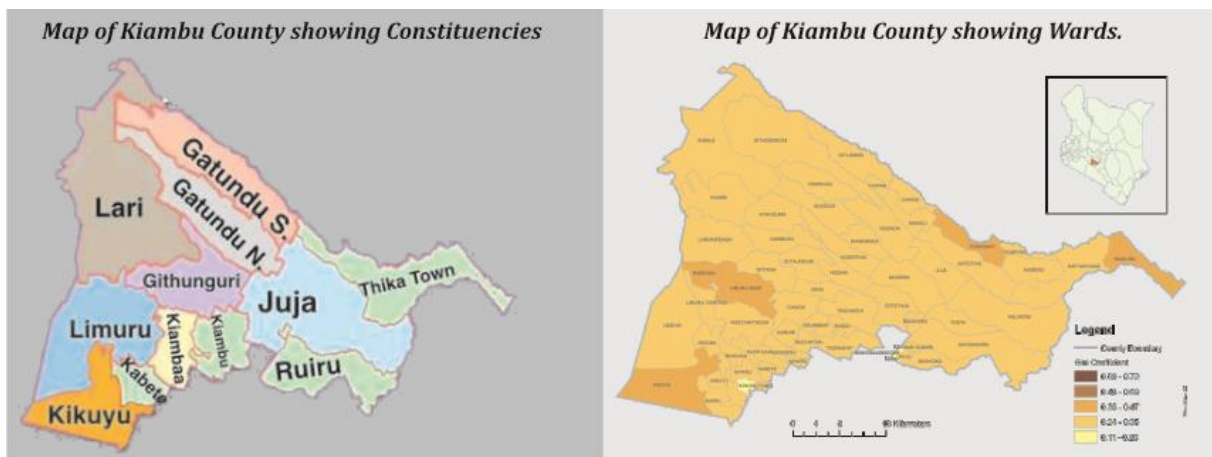
[http://i.ebayimg.com/00/s/OTI2WDE2MDA=/z/lvIAAOSwhQhY7TSz/\\$_57.JPG](http://i.ebayimg.com/00/s/OTI2WDE2MDA=/z/lvIAAOSwhQhY7TSz/$_57.JPG)



<http://thumbs.ebaystatic.com/images/g/uvgAAOSw3ZRY~5YR/s-l225.jpg>

Central

Kiambu County



<http://www.inerelakenya.org/wp-content/uploads/2016/02/kiambu-map.jpg>

Banana Hill



<http://www.postmarks.co.za/images/Banana%20Hill%201957.jpg>: "BANANA HILL. Postal Agency under Limuru. Opened 1956 to 1963".

Escarpment



<http://www.postmarks.co.za/images/Escarpment%201932.jpg>: "ESCARPMENT. August 1900 to 05.07.1904; 01.10.1904; 11.06.1906 to 01.12.1906; 1908 to 05.09.1947. Between Nairobi and Naivasha".

Gatundu

<http://www.postmarks.co.za/PH%20Kenya%20Galitu%20to%20Isiolo.htm>: "GATUNDU. 03.06.1963 to 11.12.1963".

Gidhunguri = Githunguri



https://www.picclickimg.com/d/l400/pict/381763805595_/KENYA-UGANDA-TANGANYIKA-POSTMARK-GIDHUNGURI-Skeleton.jpg

<http://www.postmarks.co.za/PH%20Kenya%20Galitu%20to%20Isiolo.htm>: "GIDHUNGURI (KIAMBU).08.12.1950 to 11.12.1963. Postal agency under Kiambu".

Juja

<http://www.postmarks.co.za/PH%20Kenya%20Juja%20to%20Kangema.htm>: "JUJA. 1909 to 01.07.1914. Postal agency under Thika".

Kamiti

<http://www.postmarks.co.za/PH%20Kenya%20Juja%20to%20Kangema.htm> : "KAMITI. 01.07.1904 to 01.04.1905. Between Nairobi and Ruriu".

Kandara

<http://www.postmarks.co.za/PH%20Kenya%20Juja%20to%20Kangema.htm> : "KANDARA THIKA. 13.12.1950 to 01.04.1957. Postal agency under Thika".

Kiambu



<http://www.postmarks.co.za/images/Kiambu.jpg>: "KIAMBU. 24.02.1920 to 11.12.1963. 10 miles from Nairobi. Renamed from Kyambu".



http://www.kut-stamps.com/Postmarks/Kenya_KGV_and_KGVI/KIAMBU.jpg

<http://www.postmarks.co.za/images/Kiambu%20C%201947.jpg>

<http://thumbs.ebaystatic.com/images/g/ZDUAAOSw4DJYm0eo/s-l225.jpg>

Kiganjo



<http://www.postmarks.co.za/images/Kiganjo%20%201957.JPG>: "KIGANJO. 27.07.1954 to 11.12.1963. Station on Nanyuki branch line".

Kijabe



<http://www.postmarks.co.za/images/Kijabe%20.%20cover.jpg>: "KIJABE. December 1903 to 11.12.1963. Mile 376 on main line".



http://www.kut-stamps.com/Postmarks/Kenya_KGV_and_KGVI/KIJABE.jpg

http://www.kut-stamps.com/Postmarks/Kenya_QEII/KIJABE.jpg



<http://www.postmarks.co.za/images/Kijabe%20%20cover.jpg>

Kikurgu (=Kikuyu)



<http://www.michael-hamilton.com/images/BEA59753.jpg>

<http://www.michael-hamilton.com/images/BEA8734.jpg> ; also:

<http://www.postmarks.co.za/images/Kikurgu%20sqc%20.jpg> : "KIKUYU (KIKURGU). 01.01.1897 to 04.01.1902. 01.10.1904 to 11.12.1963. District HQ".

Kikuyu



<http://www.michael-hamilton.com/images/BEA8742.jpg>

<http://www.postmarks.co.za/images/Kikuyu%201912.jpg> : "KIKUYU (KIKURGU). 01.01.1897 to 04.01.1902. 01.10.1904 to 11.12.1963. District HQ".

<http://www.postmarks.co.za/images/Kikuyu%204.jpg>

http://www.kut-stamps.com/Postmarks/Kenya_QEII/KIKUYU.jpg

Kyambu



<http://www.postmarks.co.za/images/Kyambo%202.jpg> : "KYAMBU. 15.02.1908 to 18.12.1918. 15 km from Nairobi. Renamed Kiambu".

Limuru



<http://www.postmarks.co.za/images/Limuru%201907%20card.jpg>: "LIMURU. 01.06.1904 to 11.12.1963. 30 Km from Nairobi".



<http://www.postmarks.co.za/images/Limuru%201941.jpg>

<http://www.postmarks.co.za/images/Limuru%202C.jpg>

http://www.kut-stamps.com/Postmarks/Kenya_QEII/LIMURU.jpg



<http://www.postmarks.co.za/images/Limuru%20%20cover.jpg>



<http://img.collectorcircuit.com/gart33/s440852.jpg>

Marige

<http://www.postmarks.co.za/PH%20Kenya%20Malindi%20to%20Marsabit.htm>: "MARIGE (KIAMBU). 28.03.1955 to 11.12.1963"

Matathia

<http://www.postmarks.co.za/PH%20Kenya%20Maseno%20to%20Meru.htm>: "MATATHIA. 1948 to 11.12.1963. On main railway line".

Mbari ya Njiku

<http://www.postmarks.co.za/PH%20Kenya%20Maseno%20to%20Meru.htm>: "MBARI YA NJIKU (KIKUYU). 22.05.1957 to 11.12.1963. PA under Kikuyu".

Mitubiri



<http://www.postmarks.co.za/images/Mituburi%202.jpg>: "MITUBURI [=Mitubiri]. 01.08.1927 to 11.12.1963. On Nanyuki branch line"

https://en.wikipedia.org/wiki/Railway_stations_in_Kenya: The Nairobi-Nanyuki Railway line had the following stations: Nairobi - national capital and junction for Nanyuki – Dandora – Githurai – Kahawa – Ruiru - Kalimoni (Juja) – Komo – Thika – **Mitubiri** – Santamor – Makuyu - Saba Saba – Maragua - Murang'a – Sagana – Makaungu – Karatina – Nyeri - Naro Moru - Nanyuki - branch terminus.

Ruiru

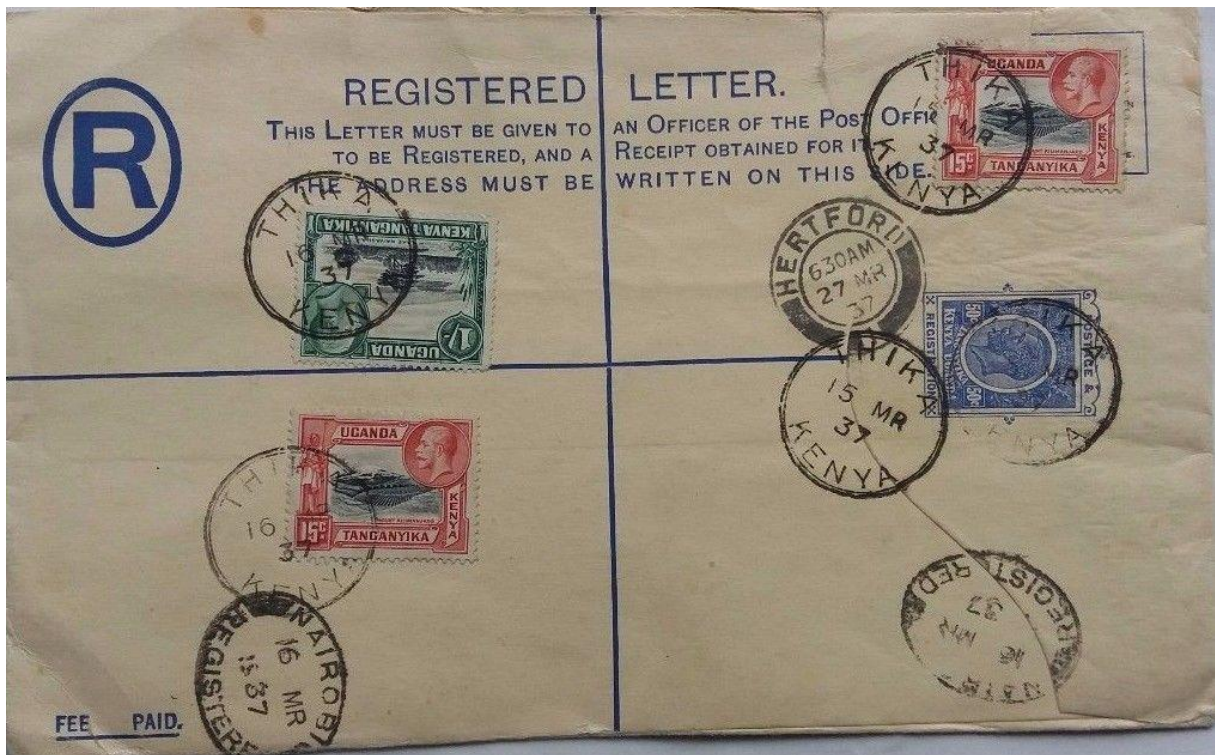


<http://thumbs.ebaystatic.com/images/g/yYAAOSwT~9WkScN/s-l225.jpg>

Thika



<https://i.ebayimg.com/thumbs/images/g/f-YAAOSwHMJYMIHt/s-l225.jpg>



[http://i.ebayimg.com/00/s/NjI4WDEwMTI=/z/i1gAAOSwa~BYZ5qF/\\$_57.JPG](http://i.ebayimg.com/00/s/NjI4WDEwMTI=/z/i1gAAOSwa~BYZ5qF/$_57.JPG)



http://www.kut-stamps.com/Postmarks/Kenya_KGV_and_KGVI/THIKA.jpg

<https://i.ebayimg.com/thumbs/images/g/UdoAAOSwU1FXP5jc/s-l225.jpg>

[http://i.ebayimg.com/00/s/MTIyNVgxMDAw/z/ccgAAOSweuxWQz2A/\\$_12.JPG](http://i.ebayimg.com/00/s/MTIyNVgxMDAw/z/ccgAAOSweuxWQz2A/$_12.JPG)



Ebay



[http://i.ebayimg.com/00/s/MTEExN1gxNjAw/z/ijUAAOSw-itXtYcd/\\$_12.JPG](http://i.ebayimg.com/00/s/MTEExN1gxNjAw/z/ijUAAOSw-itXtYcd/$_12.JPG)

Uplands



http://www.kut-stamps.com/Postmarks/Kenya_QEII/UPLANDS.jpg



<http://thumbs.ebaystatic.com/images/g/zJcAAOSwc1FXYZky/s-l225.jpg>

<http://www.postmarks.co.za/images/Fort%20Hall%208.jpg>

Kahuti

<http://www.postmarks.co.za/PH%20Kenya%20Juja%20to%20Kangema.htm> : “KAHUTI. 17.03.1949 to 22.05.1954. Fort Hall District”.

Kangema



<http://www.postmarks.co.za/images/Kangema%201956%20Kenya.jpg> : “KANGEMA (FORT HALL). 17.12.1954 to 11.12.1963. Postal agency under Thika”.

Makuyu



[http://i.ebayimg.com/00/s/NTI5WDQ3MQ==/z/B8gAAOSwBOtY~5Hu/\\$ 12.JPG](http://i.ebayimg.com/00/s/NTI5WDQ3MQ==/z/B8gAAOSwBOtY~5Hu/$ 12.JPG)

<http://www.postmarks.co.za/images/Makuyu%20.jpg>: "MAKUYU. 01.11.1922 to 11.12.1963. On Nanyuki branch line".

http://www.kut-stamps.com/Postmarks/Kenya_QEII/MAKUYU.jpg

Maragua

<http://www.postmarks.co.za/PH%20Kenya%20Malindi%20to%20Marsabit.htm>: "MARAGUA. 01.09.1926 to 11.12.1963. On Nanyuki branch line".

Nyeri County



<http://www.kenyacountyguide.com/wp-content/uploads/2016/11/nyeri-final-map.jpg>

Gakindu

<http://www.postmarks.co.za/PH%20Kenya%20Endebess%20to%20Garissa.htm> : "GAKINDU.
30.10.1950 to 10.04.1953. Railway agency under Nyeru".

Gatitu Market



<http://www.postmarks.co.za/images/Gatitu%20Market%20....jpg> : "GATITU MARKET (NYERI).1955 to
25.07.1963. Postal agency under Nyeri".

Giakanja



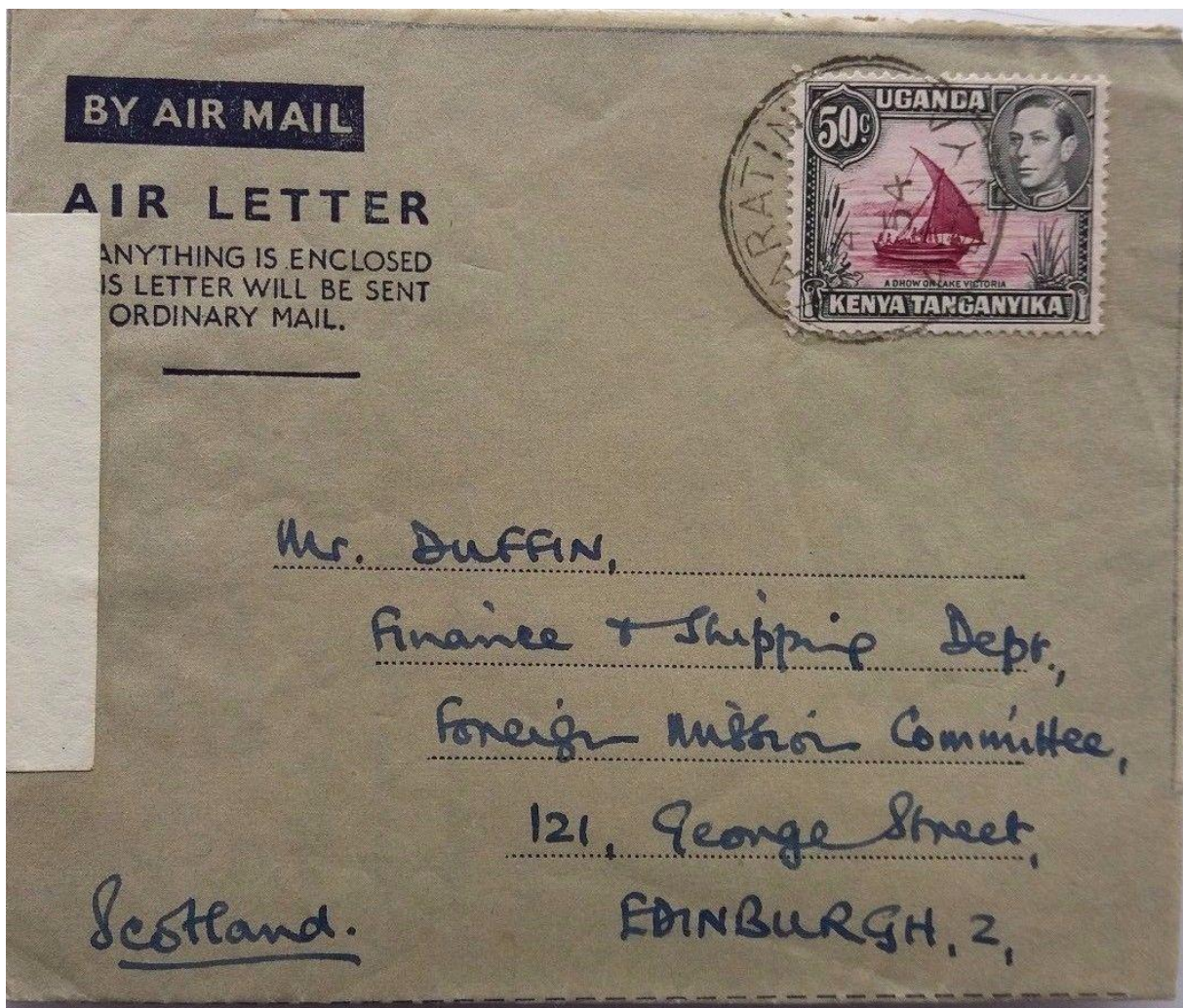
[http://www.postmarks.co.za/images/Giakanja%201961%20\(1\).jpg](http://www.postmarks.co.za/images/Giakanja%201961%20(1).jpg) : "GIAKANJA.13.04.1955 to
09.04.1961. Postal agency under Nyeri"

Ihururu Market



<http://www.postmarks.co.za/images/Ihururu%20market%201960.jpg>: "IHURURU MARKET (NYERI).
26.09.1955 to 11.12.1963".

Karatina



<http://i.ebayimg.com/images/g/S3wAAOSwTM5Y8KyW/s-l1600.jpg>: "KENYA 1954 AIR LETTER WITH MESSAGE ABOUT MAU MAU GANG CONFRONTATION KARATINA".



<http://www.postmarks.co.za/images/Karatina%20%20cover.jpg>

Kiganjo



http://www.kut-stamps.com/Postmarks/Kenya_QEII/KIGANJO.jpg

Lamuria



<http://www.postmarks.co.za/images/Lamuria%203.jpg>: "LAMURIA. 1926 to 18.02.1947. Nyeri District".

Mukuruweini

<http://www.postmarks.co.za/PH%20Kenya%20Moyale%20to%20Mwatate.htm>: "MUKURUWEINI (NYERI). 01.08.1955 to 11.12.1963. PA under Nyeri".

Mweiga

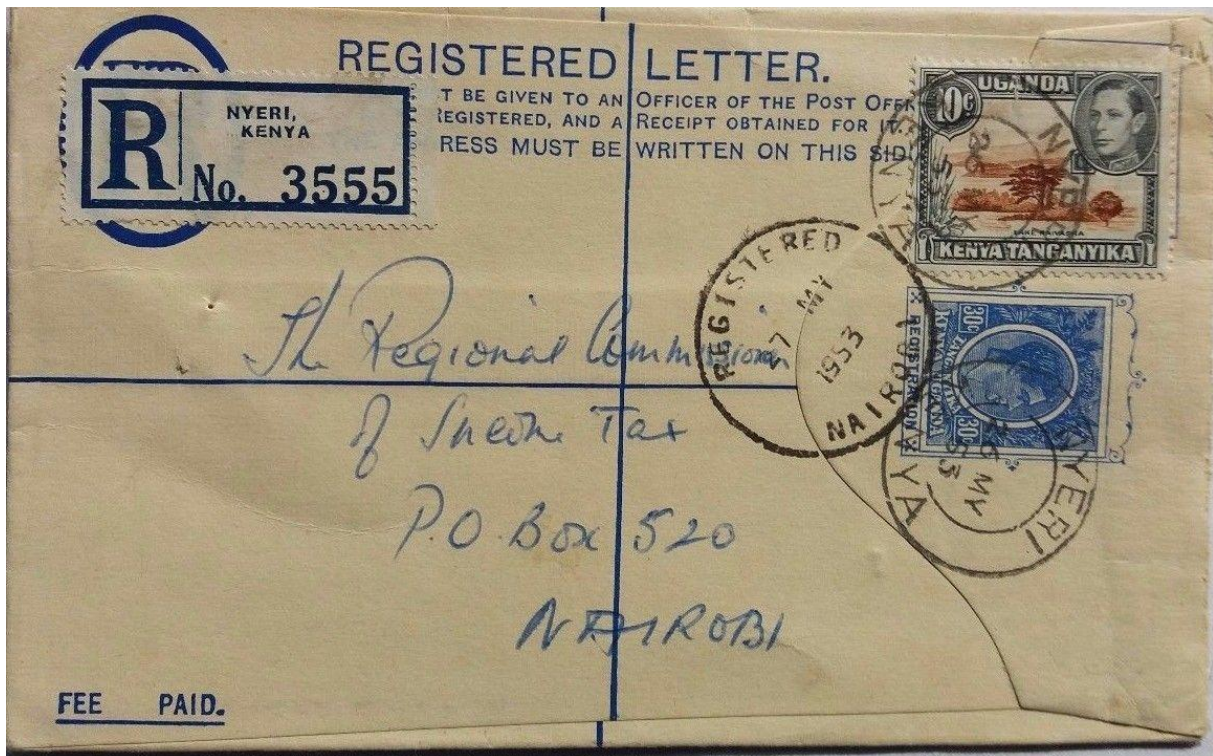


<http://www.postmarks.co.za/images/MWEIGA%201940.jpg>: "MWEIGA. 01.05.1929 to 11.12.1963. Postal agency under Nyeri".

Nyeri



http://www.kut-stamps.com/Postmarks/Kenya_KGV_and_KGVI/NYERI_STATION.jpg

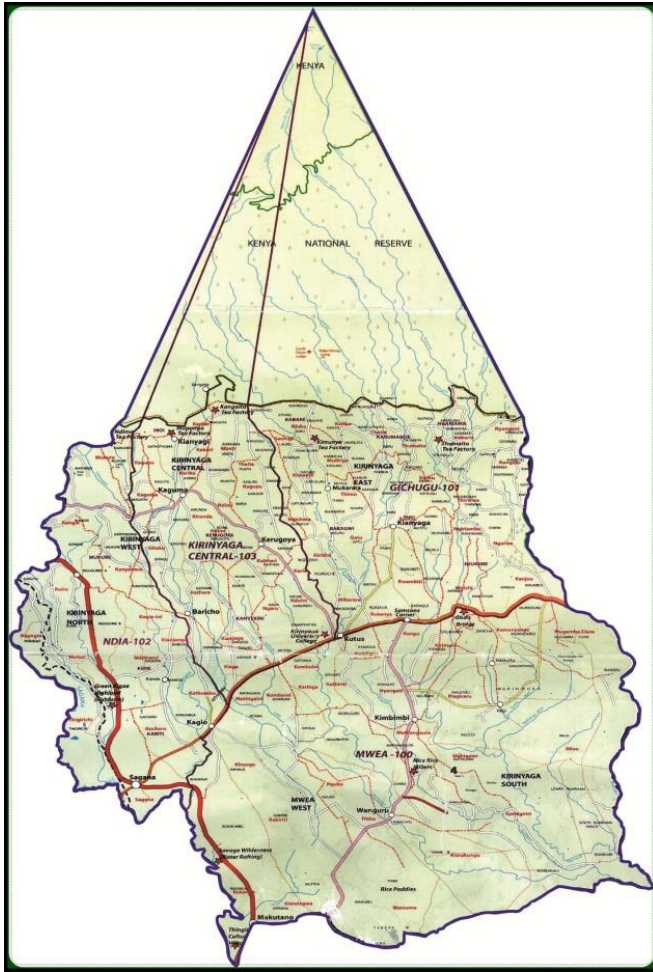


<http://i.ebayimg.com/images/g/NuAAAOSww3tY7iTk/s-l1600.jpg>



https://www.picclickimg.com/d/l400/pict/381783143132/_KENYA-UGANDA-TANGANYIKA-POSTMARK-THIKA-with-ARMY-CACHET.jpg

Kirinyaga County



<http://www.kirinyaga.go.ke/images/kirinyaga%20map%20finl.jpg>

Kerugoya



<http://www.postmarks.co.za/images/Kerugoya.jpg>: "KERUGOYA. 16.02.1942 to 11.12.1963. District HQ".

Kutus

<http://www.postmarks.co.za/PH%20Kenya%20Kitale%20to%20Kutus.htm>: KUTUS KERUGOYA.
14.09.1956 to 11.12.1963".

Sagana



<http://thumbs.ebaystatic.com/images/g/6h4AOSwSypY~5pC/s-l225.jpg>

Nyandarua County



<http://maps.maphill.com/kenya/central/nyandarua/simple-maps/gray-map/gray-simple-map-of-nyandarua.jpg>

Kinangop



<http://www.postmarks.co.za/images/Kinangop%20193....jpg>: "KINANGOP. 02.09.1935 to 27.04.1949. Renamed South Kinangop".

<https://i.ebayimg.com/images/g/qHgAAOSwdGFYwCrK/s-l300.jpg>

North Kinangop



<http://thumbs.ebaystatic.com/images/g/EJcAAOSwgWNY~5gV/s-l225.jpg>

http://thumbs3.picclick.com/d/l400/pict/381783145522_/Kenya-uganda-tanganyika-Postmark-North-Kinangop.jpg

Lesirko

<http://www.postmarks.co.za/PH%20Kenya%20Kwale%20to%20Likoni.htm> : "LESIRKO. 31.08.1929 to 13.02.1930. Railway agency. Renamed to Ol'Joro Orok; Not recorded".

Oljoro Orok



http://www.kut-stamps.com/Postmarks/Kenya_QEII/OLJORO_OROK.jpg

Ol Kalou



http://www.kut-stamps.com/Postmarks/Kenya_QEII/OL_KALOU.jpg

South Kinangop



http://www.kut-stamps.com/Postmarks/Kenya_QEII/SOUTH_KINANGOP.jpg