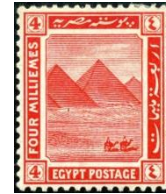




Universiteit
Leiden



African Studies Centre Leiden

African Postal Heritage

APH Paper nr 17, part 5

Ton Dietz

Kenya: East Kenya postmarks

Version May 2017

Introduction

Postage stamps and related objects are miniature communication tools, and they tell a story about cultural and political identities and about artistic forms of identity expressions. They are part of the world's material heritage, and part of history. Ever more of this postal heritage becomes available online, published by stamp collectors' organizations, auction houses, commercial stamp shops, online catalogues, and individual collectors. Virtually collecting postage stamps and postal history has recently become a possibility. These working papers about Africa are examples of what can be done. But they are work-in-progress! Everyone who would like to contribute, by sending corrections, additions, and new area studies can do so by sending an email message to the APH editor: Ton Dietz (dietzaj@asc.leidenuniv.nl). You are welcome!

Disclaimer: illustrations and some texts are copied from internet sources that are publicly available. All sources have been mentioned. If there are claims about the copy rights of these sources, please send an email to asc@asc.leidenuniv.nl, and, if requested, those illustrations will be removed from the next version of the working paper concerned.

African Studies Centre Leiden
P.O. Box 9555
2300 RB Leiden
The Netherlands

Telephone	+31-71-5273372
E-mail	asc@asc.leidenuniv.nl
Website	http://www.ascleiden.nl
Facebook	www.facebook.nl/ascleiden
Twitter	www.twitter.com/ascleiden
Countryportal	http://countryportal.ascleiden.nl

Illustrations cover page:

ASC Leiden postage stamp Nederland (2011): ©African Studies Centre Leiden

Cape of Good Hope postage stamp 1853:

http://upload.wikimedia.org/wikipedia/commons/thumb/7/7c/Cape_Triangular_Postage_Stamp.jpg/400px-Cape_Triangular_Postage_Stamp.jpg

Egypt postage stamp 1914:

https://upload.wikimedia.org/wikipedia/commons/4/4b/Post_Stamp_Egypt.jpg

Table of Contents

Part 1	1
Imperial British East Africa Company 1890-1895	
Part 2	52
British East Africa 1895-1902	
Part 3	111
British East Africa and Uganda 1902-1921	
Part 4	152
Kenya and Uganda 1922-1935	
Part 5	172
East Kenya postmarks	
Part 6	248
Central Kenya postmarks	
Part 7	295
West Kenya postmarks	

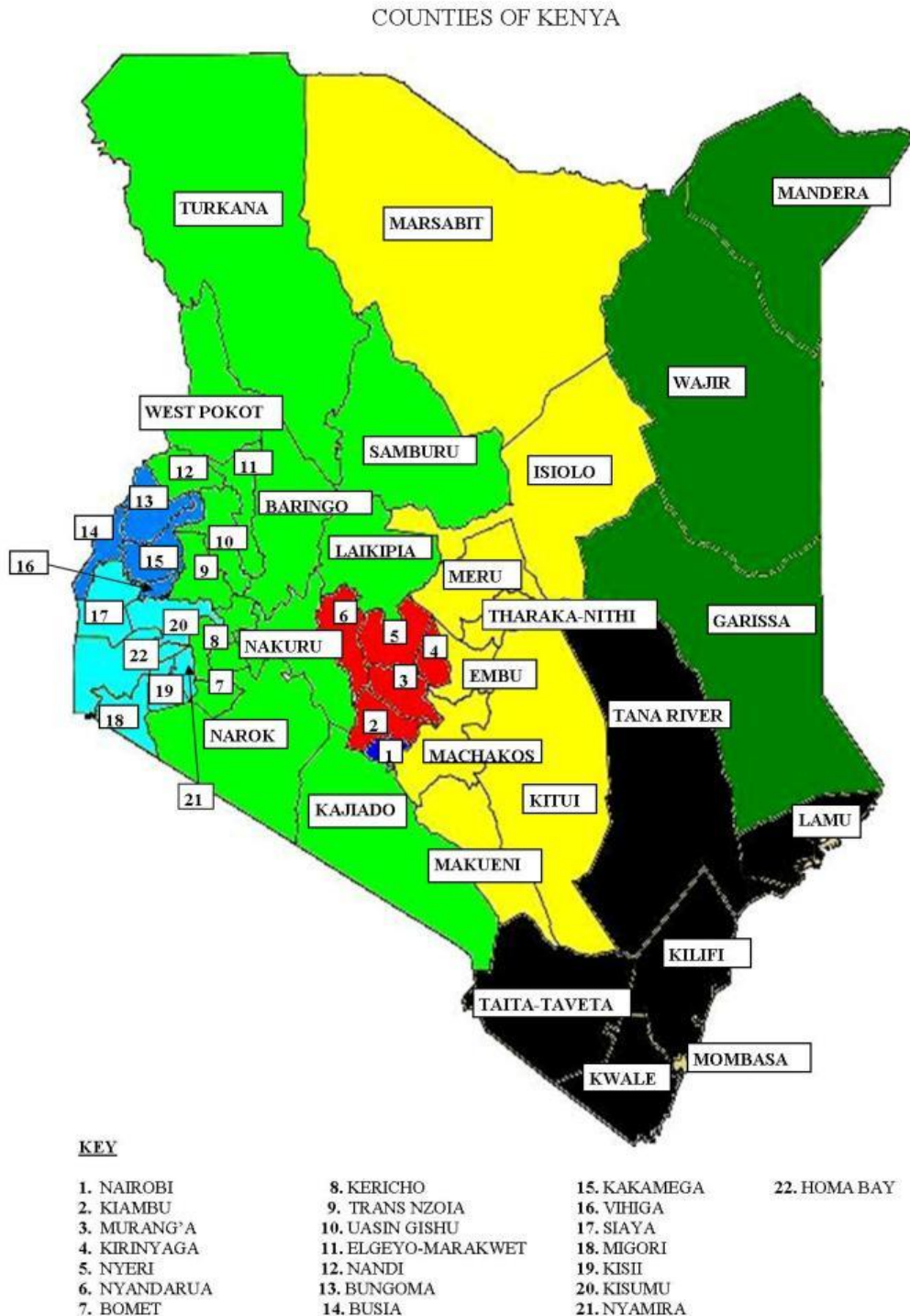
Uganda before 1902 and Uganda postmarks see APH 18

Tanganyika and Tanzania postmarks see APH 19 (German East Africa and follow up see APH 3)

Zanzibar see APH 20

Kenya, Uganda and Tanganyika 1935-1963 see APH 21

Postmarks EAST KENYA



<https://i2.wp.com/www.howtodiys.com/wp-content/uploads/2016/07/kenya-county-map-1.jpg?resize=696%2C990> ; however: 9 = Nandi and 12 = Trans Nzoia!

Maps: Google (if otherwise: indicated)

Coast

Lamu County



<https://s-media-cache-ak0.pinimg.com/600x315/bc/8d/ed/bc8dedd011264b05dc7e5a076ba89d2f.jpg>

Faza



<http://www.postmarks.co.za/images/Faza%201957.jpg>: “FAZA. 23.02.1954 to 11.12.1963. Railway agency under Lamu”.

Kiunga



<http://www.postmarks.co.za/images/Kiunga%20Lamu%201953.jpg>: “KIUNGA LAMU. 11.02.1960 to 11.12.1963”.

Lamu: German post office in 1890-91



<https://cdn.philasearch.com/A09396/S453/v1681.jpg>

<http://www.germanpostalhistory.com/php/ImageServer.php?image=76629.jpg>

<http://www.germanpostalhistory.com/php/ImageServer.php?image=76628.jpg>



http://www.matthewbennettauctions.com/lotphotos_large/300/171984.jpg



http://www.matthewbennettauctions.com/lotphotos_large/300/171986.jpg



<https://www.cherrystoneauctions.com/auctionscans200811/1688.jpg>



<http://i.ebayimg.com/thumbs/images/g/WuEAAOSw-0xYfpd-/s-l225.jpg>



http://www.matthewbennetauctions.com/lotphotos_large/300/172015.jpg



<https://cdn.philasearch.com/A00035/S364/v1511.jpg>

Lamu: Imperial British East Africa Company post office in 1890



[http://i.ebayimg.com/00/s/NjY3WDQyNA==/z/yKoAAOSwP~tW5C~E/\\$_12.JPG](http://i.ebayimg.com/00/s/NjY3WDQyNA==/z/yKoAAOSwP~tW5C~E/$_12.JPG)

<http://www.postmarks.co.za/images/Lamu%201896.jpg>: "LAMU. 30.05.1890 to 11.12.1963. A German office was open here from 1888 to 1891".



<https://s-media-cache-ak0.pinimg.com/236x/83/10/ea/8310ea7229bbe65e174a4333615dd434.jpg>
Postmark Lamu.

http://thumbs3.ebaystatic.com/d/l225/m/mnFbw6kvRc_gjX7F5p8CU-g.jpgb

<http://thumbs.ebaystatic.com/images/g/QRoAAOSwsW9YwTC4/s-l225.jpg>



<http://www.postmarks.co.za/images/Lamu%20cover.jpg>



[http://i.ebayimg.com/00/s/NTczWDg3OQ==/z/1s0AAOSw44BYNr8N/\\$_57.JPG](http://i.ebayimg.com/00/s/NTczWDg3OQ==/z/1s0AAOSw44BYNr8N/$_57.JPG)



[https://upload.wikimedia.org/wikipedia/en/thumb/0/08/British East Africa 1897 wrapper.jpg/220px-British East Africa 1897 wrapper.jpg](https://upload.wikimedia.org/wikipedia/en/thumb/0/08/British_East_Africa_1897_wrapper.jpg/220px-British_East_Africa_1897_wrapper.jpg)



[http://i.ebayimg.com/00/s/MTA0NlgxNjAw/z/4h4AAOSw42JWC8wj/\\$_57.JPG](http://i.ebayimg.com/00/s/MTA0NlgxNjAw/z/4h4AAOSw42JWC8wj/$_57.JPG)



<http://www.postmarks.co.za/images/Lamu%201937.jpg>

<http://www.postmarks.co.za/images/Lamu%201955.jpg>

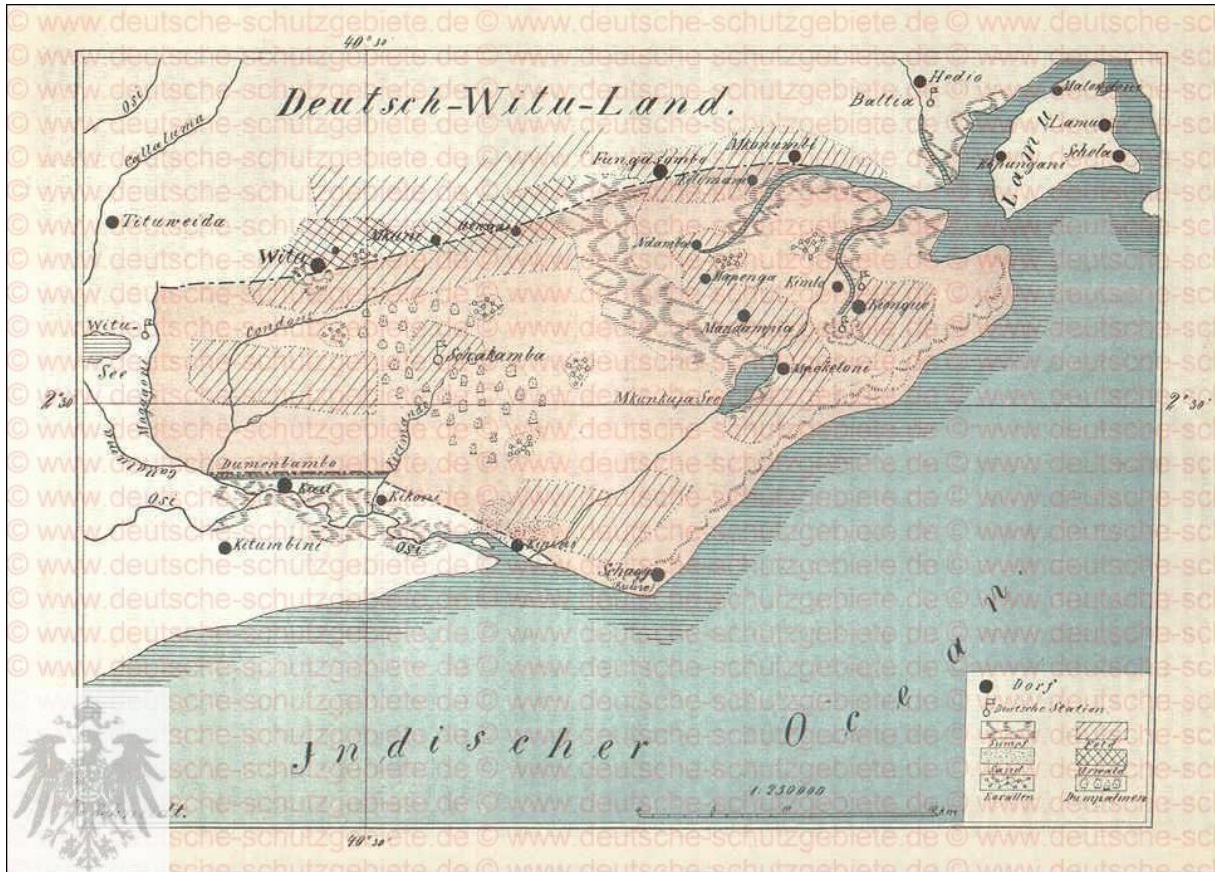


<http://thumbs.ebaystatic.com/images/g/YU4AAOSwSIBYuUuL/s-l225.jpg>

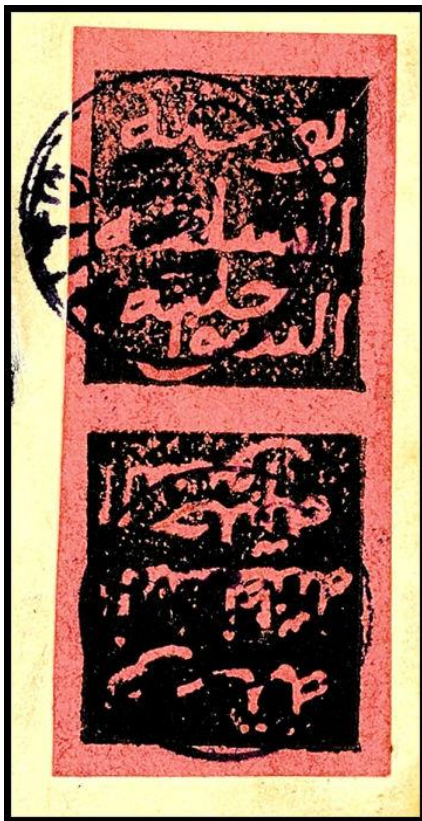
Witu (see APH Paper for Tanzania)



<https://upload.wikimedia.org/wikipedia/commons/thumb/7/77/Witu1890.png/300px-Witu1890.png>



http://www.deutsche-schutzgebiete.de/webpages/Deutsch-Witu_Karte.jpg



<http://img.collectorcircuit.com/files/dr.reinhard-fischer/stampauction/public-stamps-briefmarken-auction-141/04590.jpg>

<https://i.ebayimg.com/thumbs/images/g/De8AAOSwvg9XT4T8/s-l225.jpg>



http://www.cherrystoneauctions.com/_auction/results.asp?auction=200805&task=submit&country=GERMAN+COLONIES+Witu+Protectorate



<http://img.collectorcircuit.com/files/cherrystone-auctions/stampauction/worldwide-stamps-and-postal-history/332.jpg>



[http://i.ebayimg.com/00/s/MTE4NlgxMDAw/z/njkAAOSwMHdXRIUF/\\$_57.JPG](http://i.ebayimg.com/00/s/MTE4NlgxMDAw/z/njkAAOSwMHdXRIUF/$_57.JPG)

Tana River County

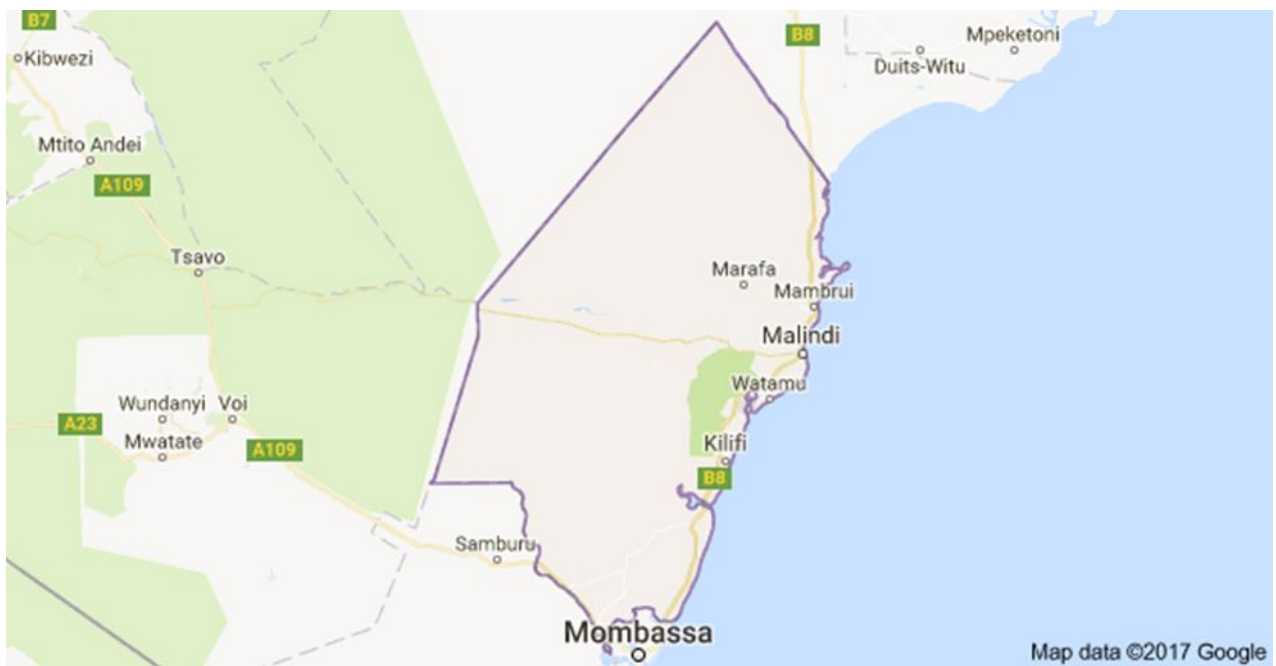


Kipini (coast)



<http://www.postmarks.co.za/images/Kipini%20DR%201939.jpg> : “KIPINI. 1907 to 08.05.1923
01.01.1960. Harbour 70 Km south of Lamu”.

Kilifi County



Galole-Malindi



http://thumbs1.picclick.com/d/l400/pict/381763795736_/KENYA-UGANDA-TANGANYIKA-POSTMARK-GALOLE-MALINDI-erd.jpg ;

also: <http://www.postmarks.co.za/images/Galole%20Malindi%201962.jpg>: "GALOLE MALINDI. 01.01.1960 to 11.12.1963. Railway agency under Malindi".

Giriama

<http://www.postmarks.co.za/PH%20Kenya%20Galitu%20to%20Isiolo.htm> : "GIRIAMA. 1917 to closed by 1922. Postal agency north of Malindi. Not recorded".

Golbanti

<http://www.postmarks.co.za/PH%20Kenya%20Galitu%20to%20Isiolo.htm> : "GOLBANTI. 1907 to 10.02.1909. Postal agency on Tana River. Not recorded".

Kikambala



<http://www.postmarks.co.za/images/Kikambala%201963.jpg>: "KIKAMBALA. 03.02.1953 to 11.12.1963. Postal agency under Kilifi".

Kilifi



<http://www.postmarks.co.za/images/Kilifi%201956.jpg>: "KILIFI. 01.01.1922 to 13.12.1922.
12.05.1923 to 11.12.1963. 36 miles from Mombasa. PO".

Malindi (Melindi)



http://www.ebay.co.uk/sch/Bullseye-SOTN-Used-Single-British-KUT-Stamp/73206/bn_40583716/i.html: "BRITISH EAST AFRICA COMPANY / KENYA. POSTMARK
MELINDI. 1a GREEN USED."



[http://i.ebayimg.com/00/s/Nzk1WDMzMw==/z/peoAAOSwwpdW5C~X/\\$_12.JPG](http://i.ebayimg.com/00/s/Nzk1WDMzMw==/z/peoAAOSwwpdW5C~X/$_12.JPG)



<http://www.postmarks.co.za/images/Melindi%201899%20SQC.jpg>: "MALINDI (MELINDI).
09.07.1892 to 11.12.1963. Port 100km from Mombasa".

<http://www.postmarks.co.za/images/Malindi%201890.jpg>



https://i2.wp.com/upload.wikimedia.org/wikipedia/en/thumb/b/b3/East_Africa_1901_wrapper.jpg/220px-East_Africa_1901_wrapper.jpg : "Postal stationery[edit]. East Africa and Uganda one anna wrapper used 23 September 1901, postmarked "MALINDI E.A.PROTECTORATE", addressed to Germany".

<http://www.postmarks.co.za/images/Malindi%205.jpg>



<https://i.ebayimg.com/thumbs/images/g/YCAAOSwPe1T7-Tp/s-l225.jpg>



http://www.kut-stamps.com/Postmarks/Kenya_QEII/MALINDI.jpg



[http://i.ebayimg.com/00/s/MTEzNlgxNjAw/z/sSsAAOSw6n5Xtxa5/\\$_12.JPG](http://i.ebayimg.com/00/s/MTEzNlgxNjAw/z/sSsAAOSw6n5Xtxa5/$_12.JPG): "KENYA 1965 PICTURE POST CARD HOTEL SINDBAD MALINDI TO ENGLAND".



<https://i.ebayimg.com/thumbs/images/g/wlcAAOSwciVXP5cN/s-l225.jpg>

Mariakani



<http://www.postmarks.co.za/images/Mariakani%204.jpg>: "MARIAKANI. 1910 to 11.12.1963. On main line".

Mazeras



<http://www.postmarks.co.za/images/Mazeras%201954.jpg>: “MAZERAS. 06.10.1921 to 11.12.1963.
On main railway line”.

Mombasa County



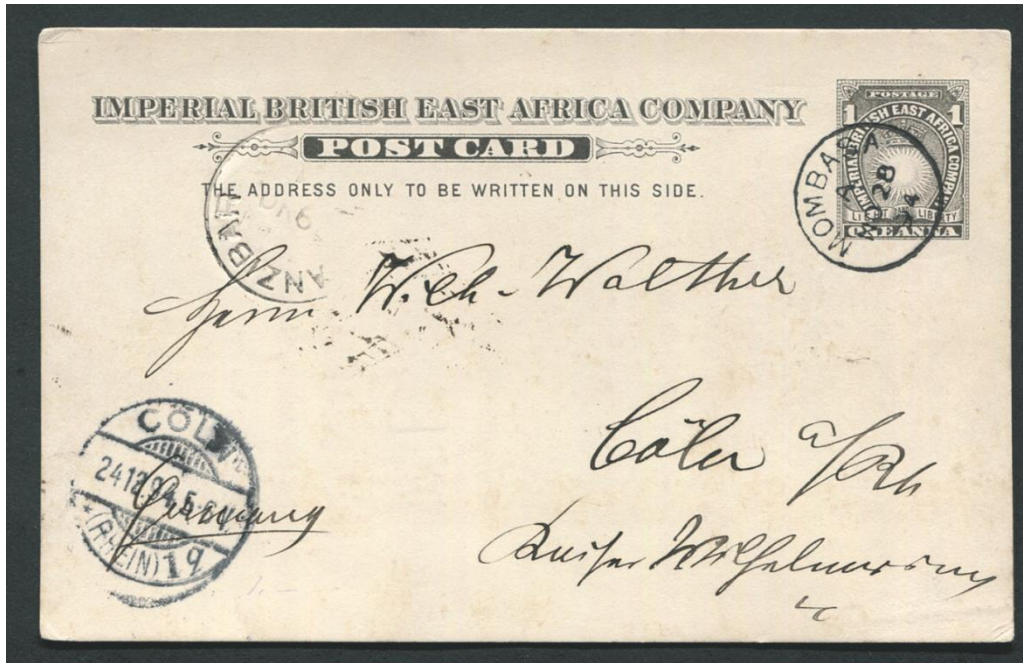
Mombasa



<http://www.bdp.de/forum/attachment.php?attachmentid=21372&d=1308838043>



<https://s-media-cache-ak0.pinimg.com/564x/74/8f/11/748f11e24a6f523f4e1b4c11bb9d410a.jpg> ;
postmark Mombasa

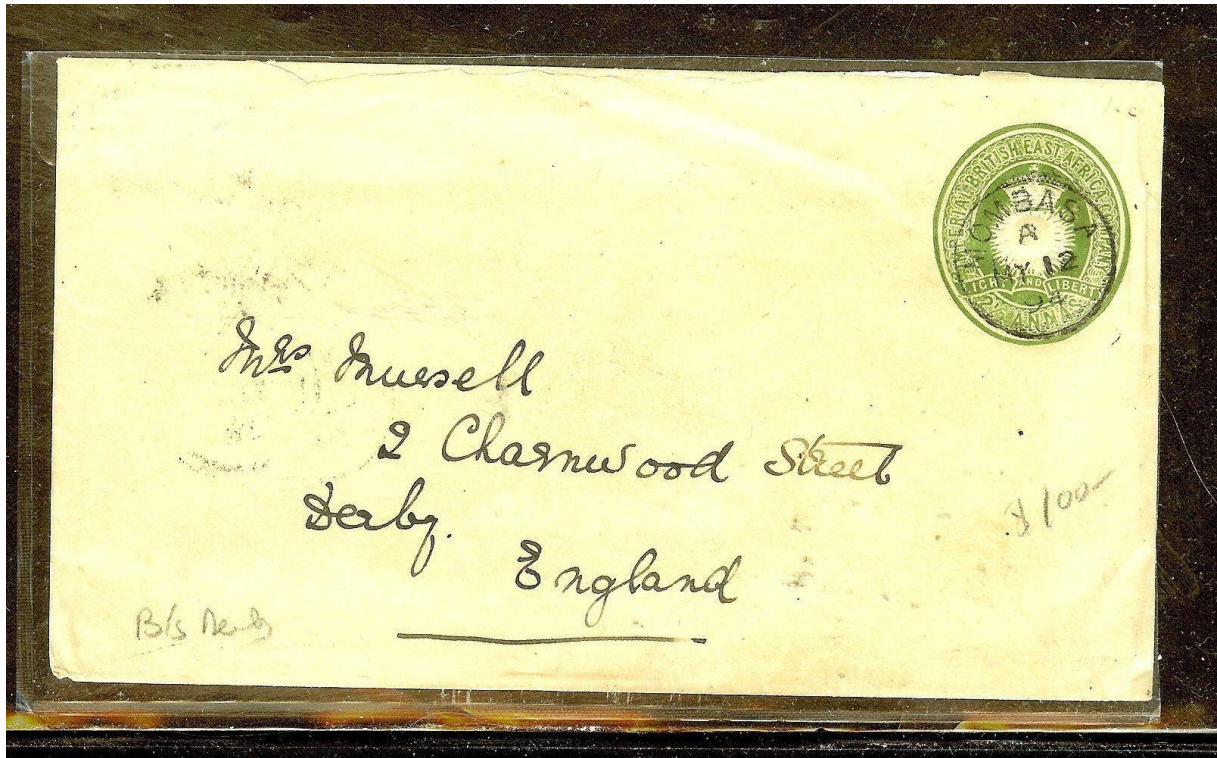


[http://i.ebayimg.com/00/s/MTAyOVgxNjAw/z/zWUAAOSwdGFYnHmh/\\$_57.PNG](http://i.ebayimg.com/00/s/MTAyOVgxNjAw/z/zWUAAOSwdGFYnHmh/$_57.PNG)

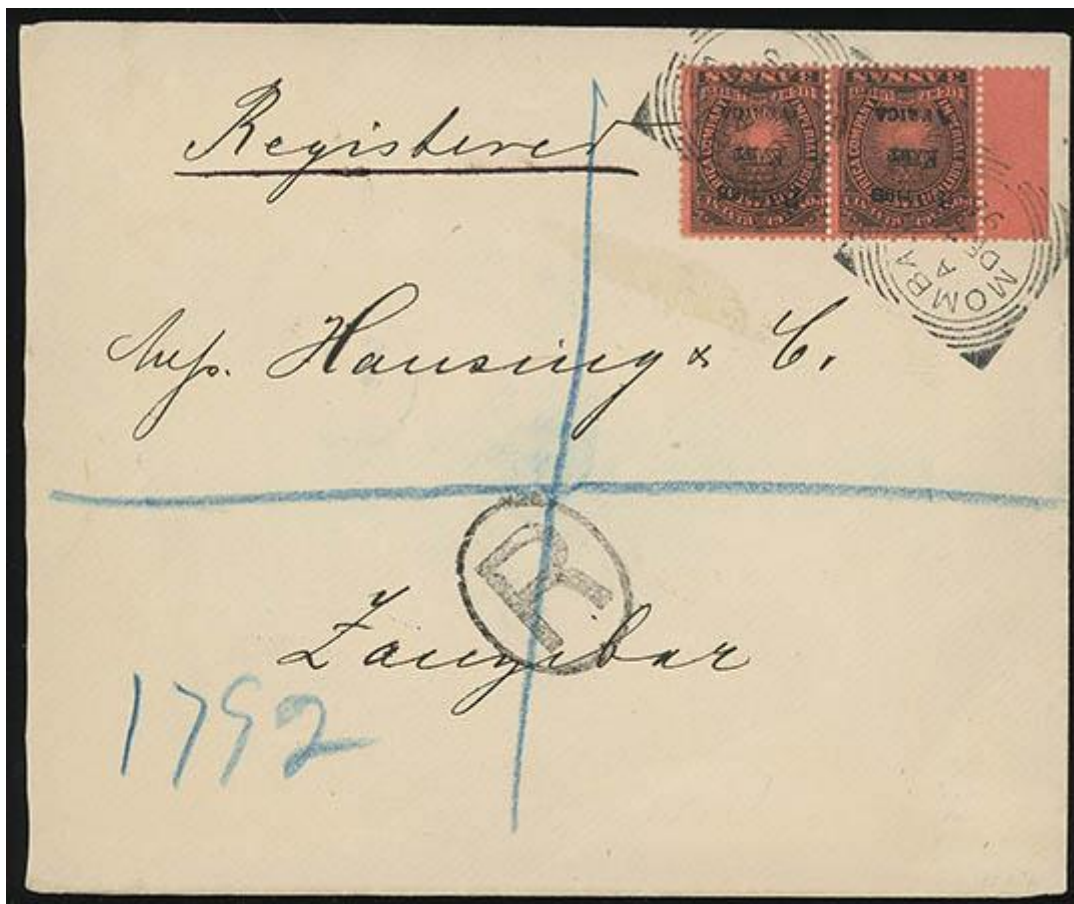


<https://i.ebayimg.com/thumbs/images/g/Br8AAOSwtfhYrr6A/s-l225.jpg>

<http://thumbs.ebaystatic.com/images/g/qg0AAOSwcUBYSY3p/s-l225.jpg>



[http://i.ebayimg.com/00/s/MTAwMVgxNjAw/z/rUQAAOSwabhUYF~O/\\$_57.JPG](http://i.ebayimg.com/00/s/MTAwMVgxNjAw/z/rUQAAOSwabhUYF~O/$_57.JPG)



<http://stampauctionnetwork.com/SR/70/183649.jpg>



<https://i.ebayimg.com/thumbs/images/g/BZEAAOSwax5Yrr64/s-l225.jpg>

<http://www.postmarks.co.za/images/Mombasa%201896.jpg>: "MOMBASA. 23.05.1890 to 11.12.1963".



<http://thumbs.ebaystatic.com/images/g/foQAAOSwoydWr8D3/s-l225.jpg>

https://encrypted-tbn2.gstatic.com/images?q=tbn:ANd9GcRleTvJBkvAu9qV6A_fBUufA-U2thld7BQT3o3F5gqzi3CxbJjx



<http://www.postmarks.co.za/images/Mombasa%201898.jpg>

<http://www.postmarks.co.za/images/Mombasa%20Foreign%20Parcel%201905.jpg>



<http://gb-precancels.org/Telegraphs/World/images/UR-ST-1.jpg>



[http://i.ebayimg.com/00/s/MTAYMFgxNjAw/z/0PEAAOSw37tWCFc9/\\$ 57.JPG](http://i.ebayimg.com/00/s/MTAYMFgxNjAw/z/0PEAAOSw37tWCFc9/$ 57.JPG)



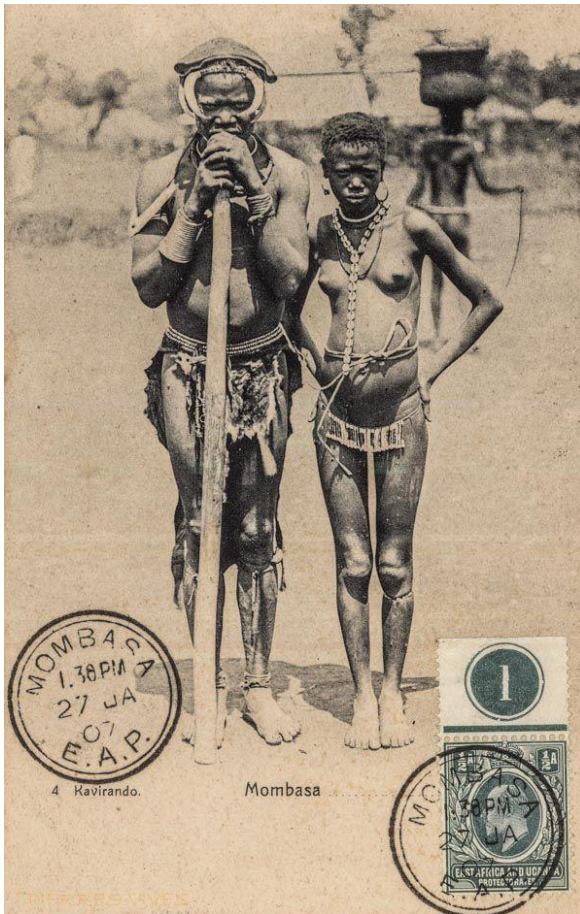
<http://www.postmarks.co.za/images/Mombasa%20Parcel.jpg>

<http://www.postmarks.co.za/images/Mombasa%20Paquetbot%201907.jpg>



<http://www.oldeastafricapostcards.com/wp-content/gallery/people-1900-portraits/pe08a1.jpg>

<http://www.oldeastafricapostcards.com/wp-content/gallery/people-1900-portraits/pe08b3.jpg>



<https://s-media-cache-ak0.pinimg.com/736x/db/0d/51/db0d51eef169f36241e34c68e6603c54.jpg>

https://images-00.delcampe-static.net/img_thumb/auction/000/397/847/423_001.jpg?v=1



<http://thumbs1.ebaystatic.com/images/g/R6YAAOSwKrhVY4JC/s-l225.jpg> : " 1914 Mombasa Harbour
BEA Kenya postcard to Italy 4 KGV stamps on the front PC".



<https://s-media-cache-ak0.pinimg.com/236x/06/ba/c9/06bac94a850bf6e47112d64c56194e6f.jpg>

http://www.kut-stamps.com/KUT_Stamps/KGV/SG50a_used.jpg

<http://thumbs.ebaystatic.com/images/g/bWMAAOSwcUBMuAf/s-l225.jpg>



https://encrypted-tbn0.gstatic.com/images?q=tbn:ANd9GcQq3e9p7Y5B8LTvtxQIBB7vJHeGIC_TxgcDVP1bB9KZOBbQ0HT8PQ

<https://s-media-cache-ak0.pinimg.com/originals/88/b7/17/88b717f41e462289997bab3b31662b12.jpg>

<http://thumbs.ebaystatic.com/images/g/n70AAOSw-4BXYqAu/s-l225.jpg>



<http://www.postmarks.co.za/images/Mombasa%20Brit%20E%20Africa%201924.jpg>



[http://www.kut-stamps.com/KUT_Stamps/KGV/SG124_127_used\(4\).jpg](http://www.kut-stamps.com/KUT_Stamps/KGV/SG124_127_used(4).jpg)



<http://www.postmarks.co.za/images/Mombasa%20Parcel%20Post%201936.jpg>



http://www.linns.com/insights/stamp-collecting-basics/2002/may/collecting-postmarks-and-cancellations-ii/basicslider-3/rc4_0506_big.jpg



<http://thumbs.ebaystatic.com/images/g/eo4AOSwx-9W0zki/s-l225.jpg>

<http://www.postmarks.co.za/images/Mombasa%20Exhibition.jpg>: "MOMBASA EXHIBITION.
16.01.1934 to 18.01.1934; 24.08.1937 to 27.08.1937; 22.08.1939 to 24.08.1939".



[http://i.ebayimg.com/00/s/NTQ2WDg0Ng==/\\$/KGrHqR,!hgE7kHYOmH\)BPivkF3JYw~~60_35.JPG](http://i.ebayimg.com/00/s/NTQ2WDg0Ng==/$/KGrHqR,!hgE7kHYOmH)BPivkF3JYw~~60_35.JPG)

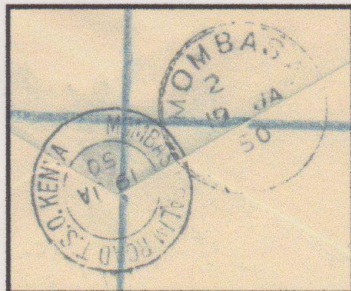


<http://thumbs.ebaystatic.com/images/g/zXMAAOxyAbxTktcq/s-l225.jpg> : "KENYA MARITIME KG6
1952 MOMBASA PAQUEBOT CANCELS".

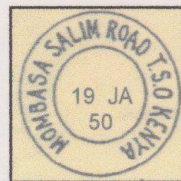
PHILATELIC DEPARTMENT
WELWYN STORES (1929) LTD
WELWYN GARDEN CITY
HERTFORDSHIRE
ENGLAND



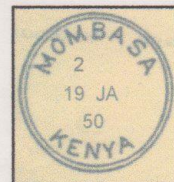
1950 - Registered Souvenir cover from **MOMBASA, KENYA**, addressed to England The set of U.P.U. postage stamps has been cancelled with four **SALIM ROAD T.S.O. MOMBASA** postmark dated **19 January 1950**. The cover was registered on the same day at **MOMBASA**.



Postmarks on the reverse of the cover.



Copies of the postmarks on the reverse of the cover.



<http://i.ebayimg.com/images/g/USAAAOSw5UZY9JAX/s-l1600.jpg>



<http://www.postmarks.co.za/images/Mombasa%2025.gif>



<http://www.postmarks.co.za/images/Mombasa%2029%201961.jpg>



<http://thumbs.ebaystatic.com/images/g/YWkAAOSwFMZWtGnU/s-l225.jpg>

<http://i.ebayimg.com/images/g/YZAAAOSw9etXP5c2/s-l300.jpg>



<https://s-media-cache-ak0.pinimg.com/236x/2d/0a/1c/2d0a1ccc09c6ed2faa072fdb1da838a1.jpg>

<https://s-media-cache-ak0.pinimg.com/236x/a1/60/6d/a1606d8264de72bdfcf64be96ac83832.jpg>

Bohemia of Lloyd (Mombasa)



<http://www.michael-hamilton.com/images/BEA59930.jpg>

Changamwe Mombasa



<https://s-media-cache-ak0.pinimg.com/236x/f1/1a/6b/f11a6b0a26f2b23673ae8957d6a09393.jpg>

Kaloleni Mombasa



<http://www.postmarks.co.za/images/Kaloleni%201.jpg>: "KALOENI. 01.04.1942 to 31.01.1951.
15.10.1955 to 17.11.1958. 15.08.1962 to 11.12.1963. Postal agent under Mombasa".

<http://www.postmarks.co.za/images/Kaloleni%201955%20skeleton.jpg>

Kilindini (Port) Mombasa



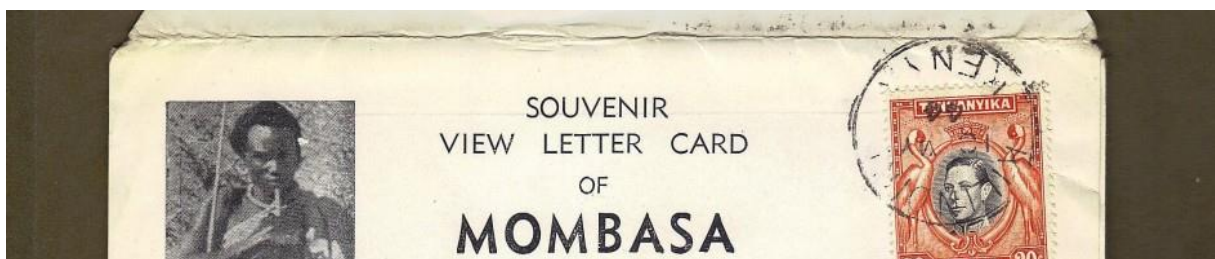
<http://www.postmarks.co.za/images/Kilindini%201903.jpg>: "KILINDINI. 20.05.1897 to 01.08.1904.
20.04.1908 to 03.08.1908. 22.07.1914 to 22.11.1957. Port south of Mombasa".



https://www.picclickimg.com/d/l400/pict/151209705485_/Kenya-1932-Camel-Cart-Transport-RP-PPC-to.jpg



<http://www.postmarks.co.za/images/Kilindini%201932%20DR%20cover.jpg>



<https://www.wasobamaborninkenya.com/blog/wp-content/uploads/2011/07/Mombasa-Kenya-Protectorate-postmark-1944-940x198.jpg>

Kilindini Road Mombasa



<http://www.postmarks.co.za/images/Kilindi%20Road%201959.jpg>: "KILINDINI ROAD B.O. MOMBASA. 16.01.1959 to 11.12.1963".

Kinango Mombasa

<http://www.postmarks.co.za/PH%20Kenya%20Kikambala%20to%20Kinangop.htm> : "KINANGO (MOMBASA). 01.12.1958 to 11.12.1963. Postal agent under Mombasa".

Likoni Mombasa



<http://www.postmarks.co.za/images/Likoni%201947.jpg>: "LIKONI. 15.02.1947 to 11.12.1963. Opposite Mombasa island".



https://www.picclickimg.com/d/l400/pict/381783147331_/Kenya-uganda-tanganyika-Postmark-Likoni.jpg

<http://www.postmarks.co.za/images/Likoni%20Kenya%201949.jpg>

Majengo Mombasa



<http://www.postmarks.co.za/images/Majengo%20Mombasa%201955.jpg>: "MAJENGOMOMBASA. 11.05.1951 to 14.01.1957".

Makupa Road Mombasa



<http://www.postmarks.co.za/images/Makupa%20Road%20Mombasa%201957.jpg>: "MAKUPA ROAD MOMBASA. 27.05.1957 to 11.12.1963".

Miritini Mombasa

<http://www.postmarks.co.za/PH%20Kenya%20Migori%20to%20Molo.htm>: "MIRITINI. 1917 to 1918; 16.11.1919 to 01.06.1936. On main railway line".

Mombasa Docks



<http://www.postmarks.co.za/images/Mombasa%20Docks%20BO%201959.jpg>: DOCKS B.O.
MOMBASA". 11.03.1957 to 11.12.1963".

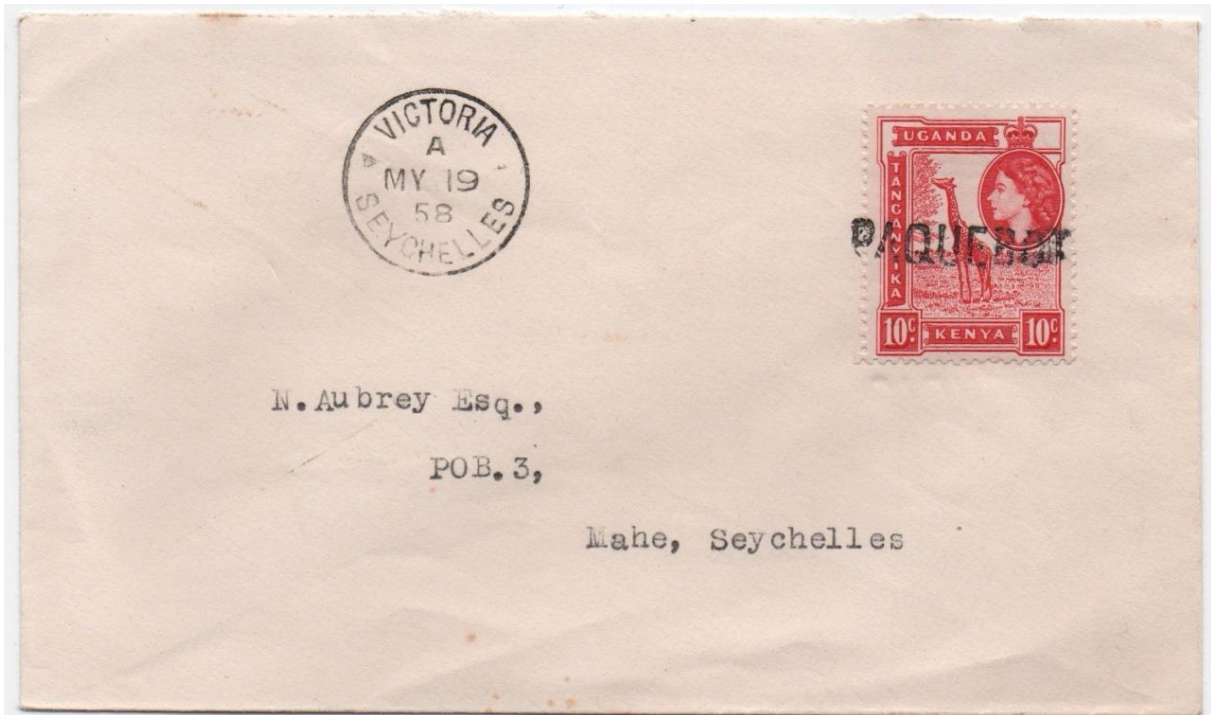
Mtwapa Creek

<http://www.postmarks.co.za/PH%20Kenya%20Moyale%20to%20Mwatate.htm>: "MTWAPA CREEK.
01.03.1960 to Unknown. Postal agency under Mombasa. Not Recorded".

Paquebot (Mombasa)



<http://i.ebayimg.com/thumbs/images/g/QZsAAOSwgmJX1Bcn/s-l225.jpg>



[http://i.ebayimg.com/00/s/NzU2WDEyODA=/z/YDkAAOSwhvFZAJ-i/\\$_57.JPG](http://i.ebayimg.com/00/s/NzU2WDEyODA=/z/YDkAAOSwhvFZAJ-i/$_57.JPG)

Salim Road Mombasa



<http://i.ebayimg.com/images/g/J5cAAOSwEOxXP5df/s-l300.jpg>

Kwale County



Gazi

<http://www.postmarks.co.za/PH%20Kenya%20Galitu%20to%20Isiolo.htm>: GAZI (MOMBASA).
01.10.1904 to 11.12.1963. On the coast 30 miles from Mombasa.

Kwale



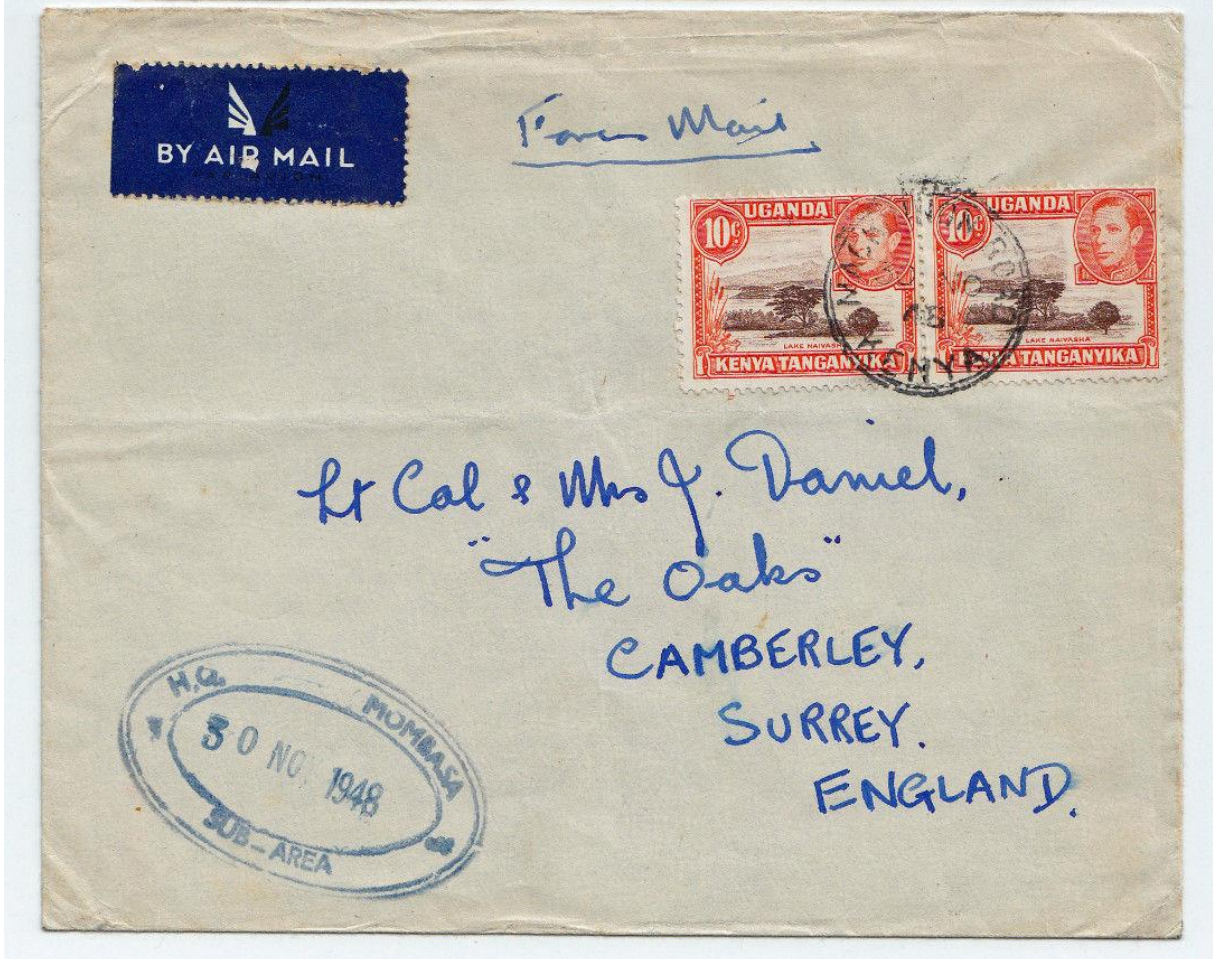
<http://www.postmarks.co.za/images/Kwale%20%20cover.jpg>: "KWALE (MOMBASA). 12.08.1930 to 11.12.1963. 20 Km from Mombasas, District HQ".



<http://www.postmarks.co.za/images/Kwale%202.jpg>

<http://www.postmarks.co.za/images/Kwale%20Mombasa%203.jpg>

Mackinnon Road



[http://i.ebayimg.com/00/s/MTYwMFgxMDgy/z/RyAAOSw3v5Ypw3O/\\$_57.JPG](http://i.ebayimg.com/00/s/MTYwMFgxMDgy/z/RyAAOSw3v5Ypw3O/$_57.JPG)



<http://www.postmarks.co.za/images/Mackinnon%20Road.jpg>: "MACKINNON ROAD. 01.10.1904 to 07.04.1956. On main railway line".

Maji-ya-Chumvi

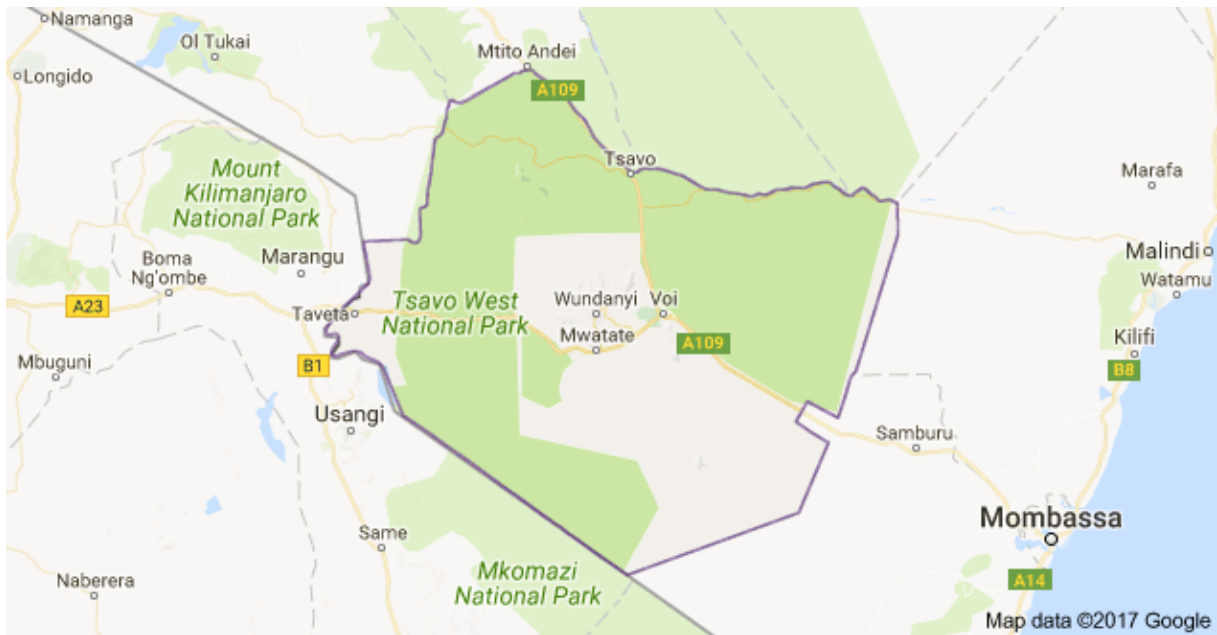
<http://www.postmarks.co.za/PH%20Kenya%20Macalder%20to%20Makuyu.htm>: "MAJI-YA-CHUMVI. 01.10.1904 to 19.03.1918. Railway agency on main line. Not recorded".

Wasin(i Island)



<http://www.michael-hamilton.com/images/KEN53733.jpg>

Taita Taveta County



Bura



<http://www.postmarks.co.za/images/Bura%201%201954.jpg>: "BURA. 01.02.1947 to 11.12.1963. 22 miles from Voi towards Moshi".

<http://www.postmarks.co.za/images/Bura%201%20Violet.jpg>

Manyani Camp



<http://www.postmarks.co.za/images/Manyani%20Camp%201956.jpg>: "MANYANI CAMP. 01.10.1904 to 07.04.1956. On main railway line".

Maungu

<http://www.postmarks.co.za/PH%20Kenya%20Maseno%20to%20Meru.htm>: "MAUNGU. 1904 to 1923; 01.02.1927 to 01.06.1936. On main railway line".

Mbololo

<http://www.postmarks.co.za/PH%20Kenya%20Maseno%20to%20Meru.htm> : "MBOLOLO. 15.09.1954 to 1956. PA under Voi. Not recorded".

Murka



<http://www.postmarks.co.za/images/Murka%201952.jpg>: "MURKA. 6.04.1952 to 12.04.1960. On Voi branch railway line".

Mwatate



<http://www.postmarks.co.za/images/Mwatate%20202.jpg>: " MWATATE (MWATATI). 01.04.1930 to 11.12.1963. On Voi branch railway line".



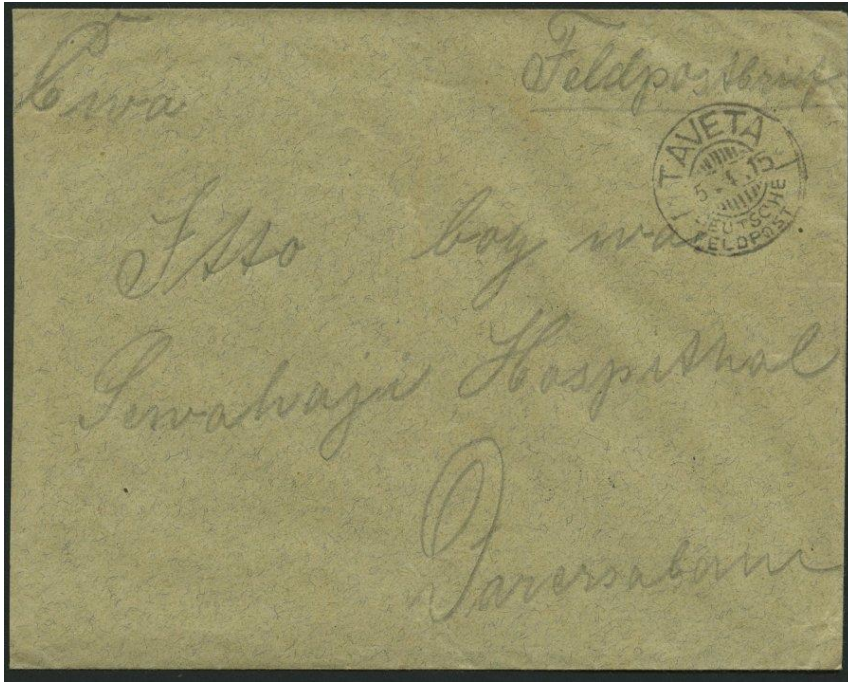
<http://www.postmarks.co.za/images/Mwatate%20Voi%201958%20Kenya.jpg>

<http://www.postmarks.co.za/images/Mwatate%201962.jpg>

Taveta

1914/15: German occupation

http://www.wokinghamphilatelic.org.uk/index_files/2015news.htm?i=1: "The Germans were pro-active and made a minor invasion of Kenya, capturing Taveta, and a special cancel was produced. Under a gentlemen's agreement, for a period of about four weeks beginning in mid-August 1914, a small quantity of mail was taken out of the German colony by the light cruiser HMS Pegasus, one of the ships of the British squadron blockading the coast. This mail was carried to Zanzibar and eventually delivered in Germany and other European destinations in late September 1914. It was limited to "open mail" (postcards, printed matter, unsealed letters) written in clear unencrypted German to facilitate censorship. HMS Pegasus was sunk in Zanzibar harbor by the "Konigsberg" the following month".

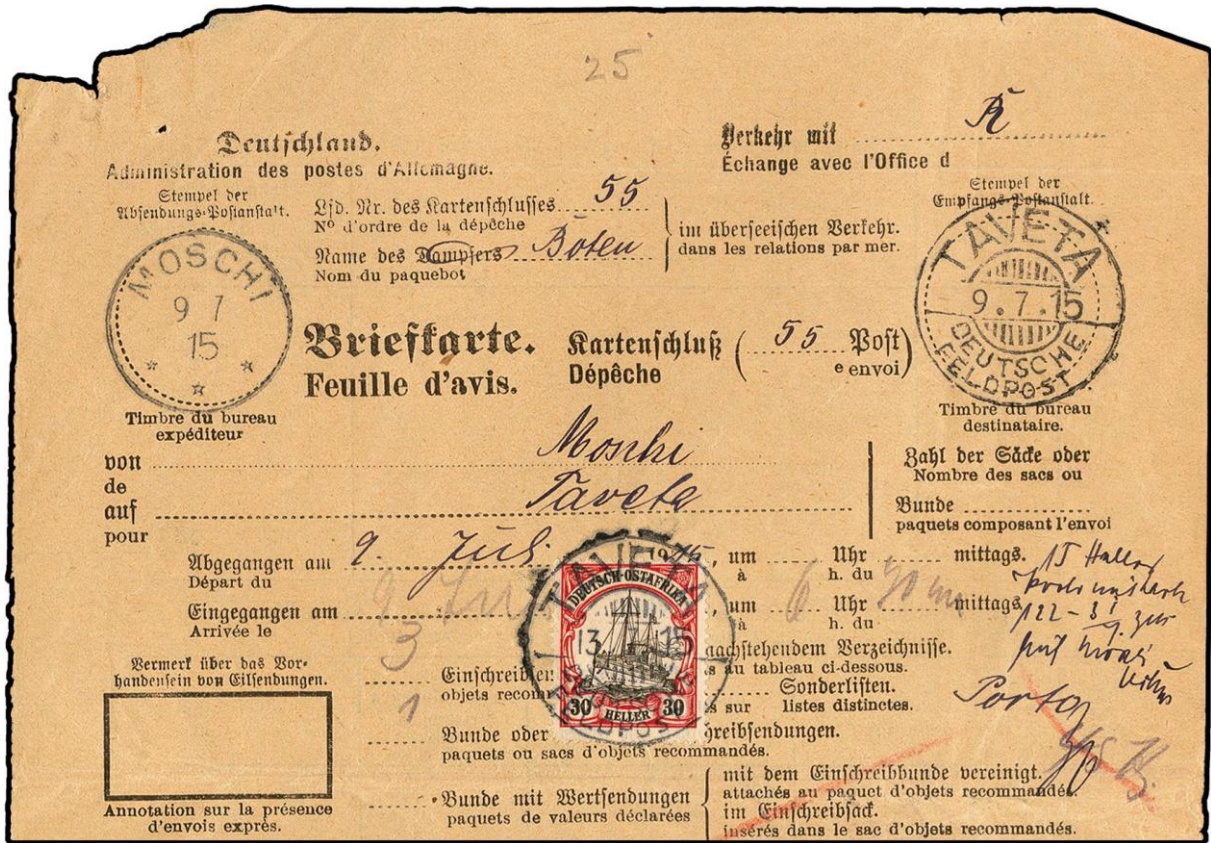


http://philabild.de/nordphila/bilder/mittel_900/0119089.jpg



<http://i.ebayimg.com/images/g/ukMAAOSwfVpYnyI6/s-l300.jpg>

stampauction network ; no further information.



<http://d1stvyu4yyf2jr.cloudfront.net/modules/auctions/14/pics/big/c9c11aa8db7ce66ccfb17e7e7c06fce6d96ba485.jpg>

Voi



<https://i.ebayimg.com/thumbs/images/g/e9oAAOSw5IJWf9As/s-l225.jpg>

Wundanyi

No post office?

Northeastern

Mandera County



<https://husseinmohamed.files.wordpress.com/2012/05/mandera-map2.jpg>

Mandera



<http://thumbs.ebaystatic.com/images/g/wDkAAOSwIWVY~5TI/s-l225.jpg>

<http://www.postmarks.co.za/PH%20Kenya%20Malindi%20to%20Marsabit.htm>: "MANDERA (ISIOLO).
14.06.1943 to 11.12.1963. Northern Frontier District".

Wajir County



Wajir

Garissa County



Garissa



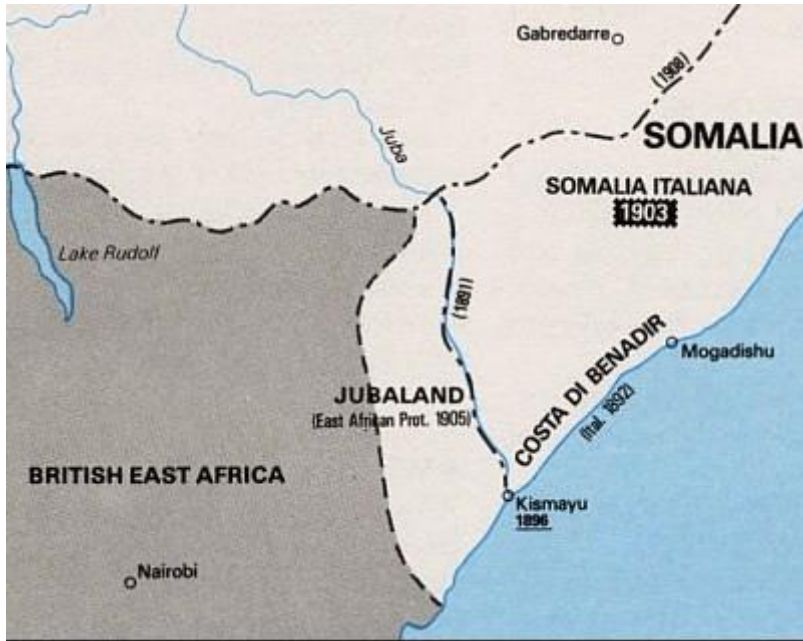
<http://www.postmarks.co.za/images/Garissa%201958.jpg>: "GARISSA. 1945 to 11.12.1963. Northern Frontier District".



<http://i.ebayimg.com/images/g/Ff4AAOSwGy5Y8Kmp/s-l1600.jpg>

Dadaab

Before 1926: Jubaland



<http://peterbaxterafrica.com/wp-content/gallery/el-wak/Jubaland%20map.jpg>

Alexandria

<http://www.postmarks.co.za/PH%20Kenya%20Ahero%20to%20Bondo.htm> : "ALEXANDRIA. In Jubaland. Opened 1919 to 1925. Ceded to Italy. Unknown".

Gobwen

<http://www.postmarks.co.za/PH%20Kenya%20Galitu%20to%20Isiolo.htm> : "GOBWEN. 20.12.1913 to 1922. North of Juba River. Ceded to Italy 29.06.1925".

Kismayu

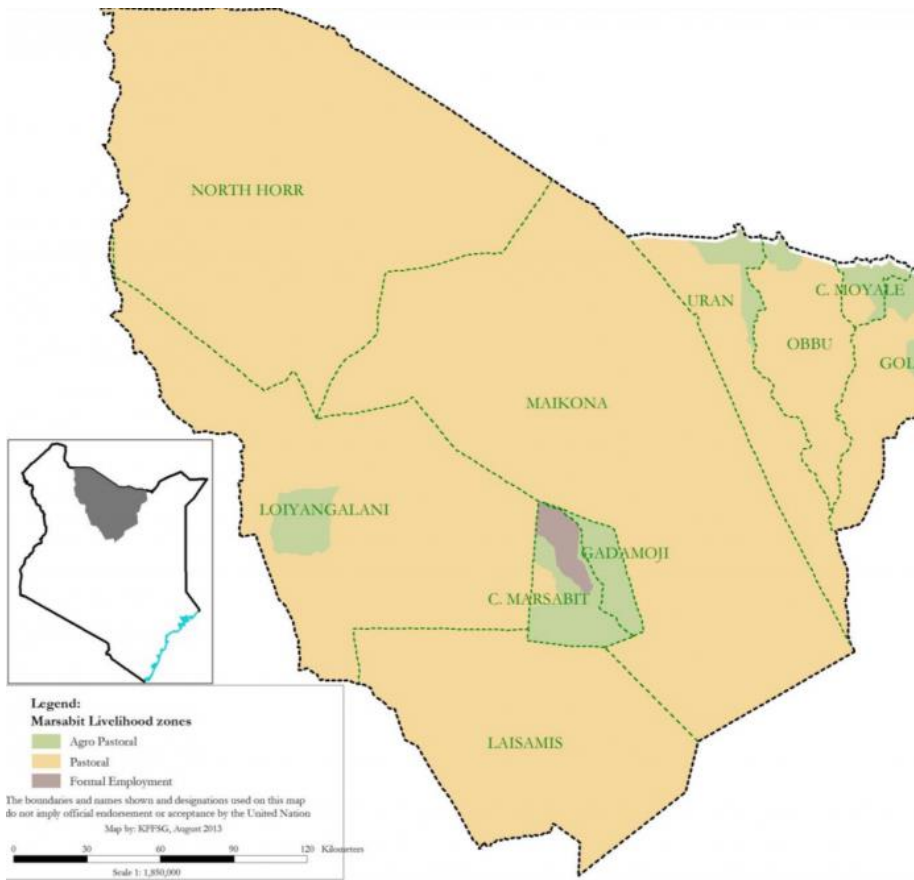


<http://www.postmarks.co.za/images/Kismayu%201911.jpg> : "KISMAYU. 01.09.1896 to 06.12.1925. Capital of Jubaland. Ceded to Italy in 1925."

<http://www.postmarks.co.za/images/Kismayu%201911%20EAP.jpg>

Eastern

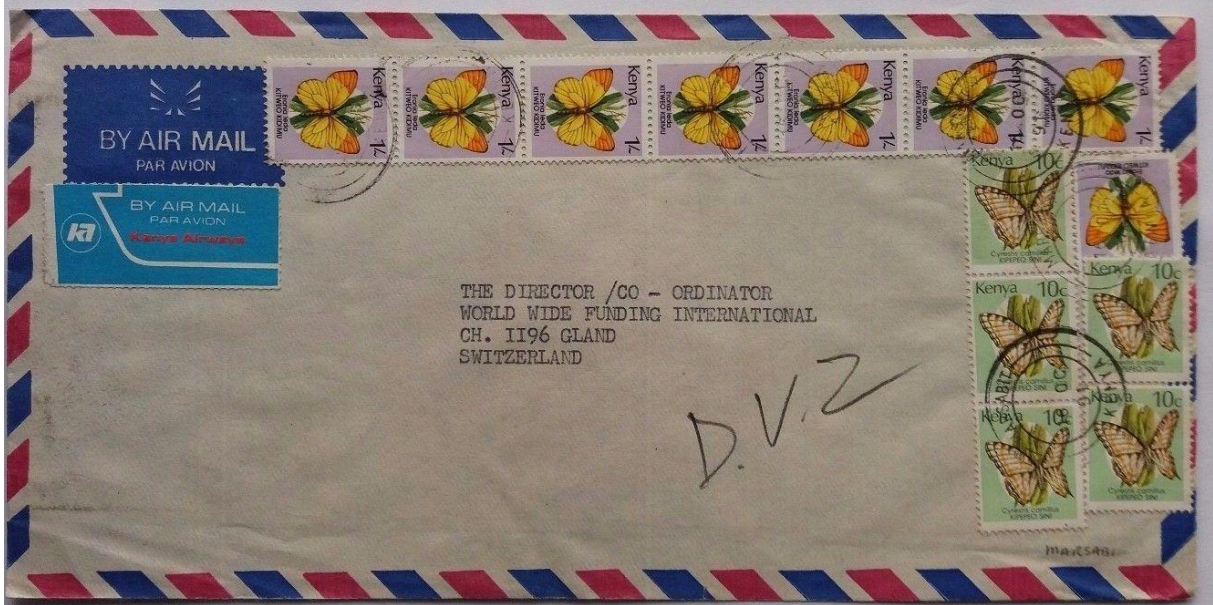
Marsabit County



http://marsabitimes.com/wp-content/uploads/2016/08/Screenshot_2016-08-28-20-50-03-1-696x668.png

Marsabit

<http://www.postmarks.co.za/PH%20Kenya%20Malindi%20to%20Marsabit.htm> : "MARSABIT (ISIOLO). 14.06.1943 to 11.12.1963. Northern Frontier District".



<http://i.ebayimg.com/images/g/OpAAAOSwdGFYwoK4/s-l1600.jpg>

Moyale



<http://www.postmarks.co.za/images/Moyale%201917.6.jpg> : "MOYALE (ISIOLO). 1917 to 1922; 14.06.1943 to 11.12.1963".

<http://www.postmarks.co.za/images/Moyale%201955%202.jpg>

Isiolo County



Isiolo



<http://www.postmarks.co.za/images/Isiolo%20%20cover.jpg>: "ISILOLO. 01.06.1929 to 11.12.1963. District headquarters. Near Meru".



<http://www.postmarks.co.za/images/Isiole%201962.jpg>



ebay; no other information

Archers Post

Meru County



Maua



<http://www.postmarks.co.za/images/Maua%20Meru%2010960.jpg>: "MAUA MERU. 01.09.1959 to 11.12.1963. PA under Meru".

Mbaranga



<http://www.chisrainey.com/images/6737.jpg>

Meru



<http://www.postmarks.co.za/images/Meru%203.jpg>: "MERU. 22.05.1957 to 11.12.1963".



<http://i.ebayimg.com/images/g/yAkAAOxySFJSDJ0F/s-l300.jpg>



<http://www.postmarks.co.za/images/Meru%201958.jpg>

Tharaka-Nithi County



Chogoria



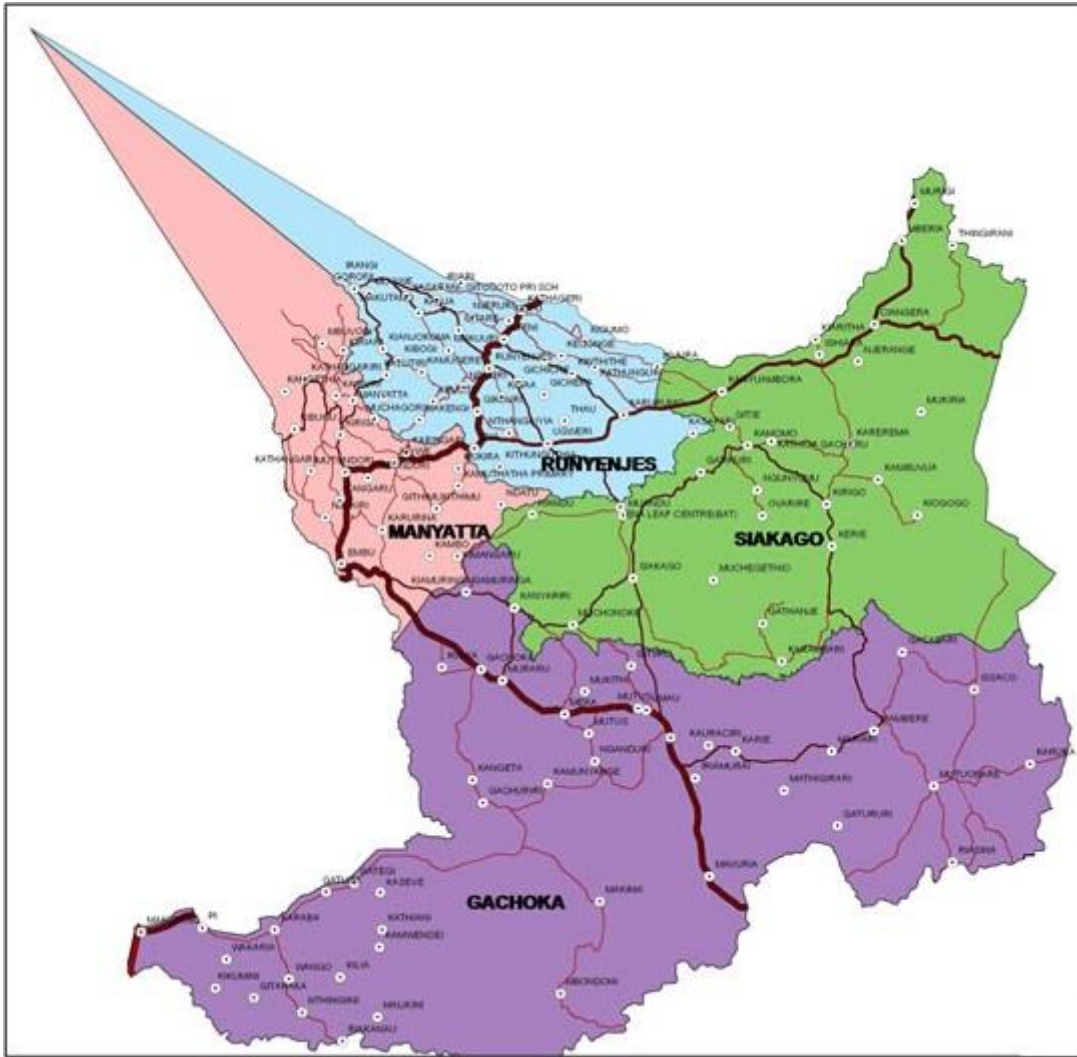
<http://www.postmarks.co.za/images/Chogoria.jpg>: "CHOGORIA. 05.02.1949 to 11.12.1963. Postal Agency 41 miles from Meru".

Chuka

<http://www.postmarks.co.za/PH%20Kenya%20Broderick%20Falls%20to%20Duke%20Street.htm> :
"CHUKA. 1917 to 1922; 19.08.1950 to 1954. 40 miles from Embu. NOT SEEN".

Tharaka

Embu County



http://embucounty1.net/wp-content/uploads/2013/08/embu_county-no-logo-single-border.jpg

Embu



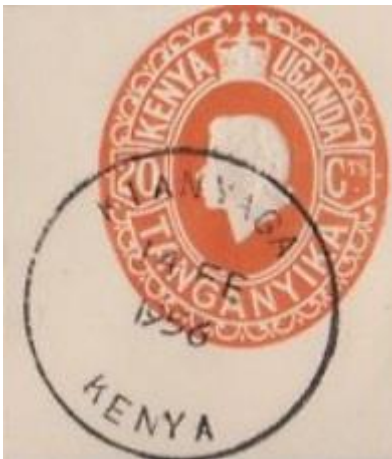
<http://www.postmarks.co.za/images/Embu.jpg>: "EMBU. 1912 to 11.12.1963.

Town 25 miles from Sagana"



http://www.kut-stamps.com/Postmarks/Kenya_QEII/EMBU.jpg

Kianyaga



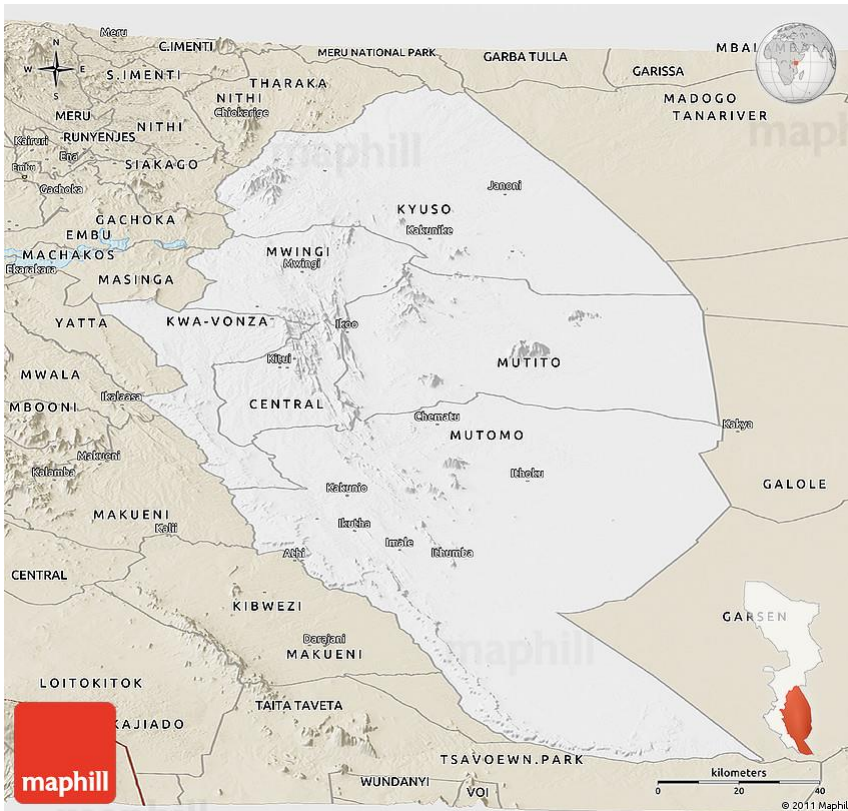
<http://www.postmarks.co.za/images/Kianyaga%201956%202.jpg>: "KIANYANGA (EMBU). 06.10.1955 to 11.12.1963 . Postal agent under Embu".

Runienje Embu (Runyenji)



<http://thumbs.ebaystatic.com/images/g/u2wAAOSwIWVY~5I2/s-l225.jpg>

Kitui County



<http://maps.maphill.com/kenya/eastern/kitui/panoramic-maps/classic-style-map/classic-style-panoramic-map-of-kitui.jpg>

Kitui



<http://www.postmarks.co.za/images/Kitui%20R%201938.jpg>: "KITUI. 1907 to 11.12.1963. District head office".



https://encrypted-tbn1.gstatic.com/images?q=tbn:ANd9GcTyuV9sbzhI7_1tc-TjJ6bfB3pl5juxjX3e-91ETAukMIC2rFNRvw

Mutomo

<http://www.postmarks.co.za/PH%20Kenya%20Moyale%20to%20Mwatate.htm>: "MUTOMO (KITUI). 01.04.1955 to 11.12.1963. Postal agency under Kitui".

Mwingi



<http://www.postmarks.co.za/images/Mwingi%201.jpg>: "MWINGI (KITUI). 01.08.1950 to 11.12.1963. Postal agency under Kitui, upgraded to post office 1956".

Machakos County



<http://www.kenyacountyguide.com/wp-content/uploads/2016/11/Machakosi-County-Map.jpg>

Athi River



<http://www.postmarks.co.za/images/Athi%20River%203.jpg>: "ATHI RIVER. Postal Agency on railway
18 miles from Nairobi. Opened 1904 to 1963".

<http://www.postmarks.co.za/images/Athi%20River%201954.jpg>

Kangundo



http://www.kut-stamps.com/Postmarks/Kenya_QEII/KANGUNDO.jpg

<http://www.postmarks.co.za/PH%20Kenya%20Kangundo%20to%20Kericho.htm> : “KANGUNDO (MACHAKOS). 01.05.1950 to 11.12.1963. Postal agency under Machakos”.

Katulani

<http://www.postmarks.co.za/PH%20Kenya%20Kangundo%20to%20Kericho.htm> : “KATULANI MACHAKOS. 19.04.1955 to 11.12.1963. Postal agent under Machakos”.

Kikima



<http://www.postmarks.co.za/images/Kikema%201958.jpg>: “KIKIMA. (MACHAKOS). 26.01.1955 to 11.12.1963. Postal agency under Machakos”.

Kilome



<http://www.postmarks.co.za/images/Kilome%201958.jpg>: "KILOME (MACHAKOS). 13.05.1957 to 11.12.1963. Postal agent under Machakos".

Kola



<http://www.postmarks.co.za/images/Kola%20Machakos%201.jpg>: "KOLA MACHAKOS. 01.03.1957 to 11.12.1963".

Machakos



<http://www.michael-hamilton.com/images/KEN59717.jpg>

<http://www.postmarks.co.za/images/Machakos%20sqc%201899.jpg>: "MACHAKOS. 01.01.1897 to 11.12.1963. 50 km from Nairobi".

<http://www.postmarks.co.za/images/Machakos%201901.jpg>



http://www.grosvenorauctions.com/dyn_pages/stamp_images/115/7414.jpg



<http://www.postmarks.co.za/images/Machakos%20cover.jpg>



<http://thumbs1.ebaystatic.com/images/g/UwwAAOSw3YNXYZj/s-l225.jpg>

http://www.kut-stamps.com/Postmarks/Kenya_QEII/MACHAKOS.jpg

Machakos Road

<http://www.postmarks.co.za/PH%20Kenya%20Macalder%20to%20Makuyu.htm> : “MACHAKOS ROAD. 01.10.1904 to 1909. Not recorded”.

Masii

<http://www.postmarks.co.za/PH%20Kenya%20Maseno%20to%20Meru.htm>: “MASII (MACHAKOS). 01.06.1961 to 11.12.1963 . PA under Machakos”.

Mitaboni

<http://www.postmarks.co.za/PH%20Kenya%20Migori%20to%20Molo.htm>: “MITABONI MACHAKOS. 11.01.1960 to 11.12.1963. PA under Machakos”

Makueni County



<http://www.kenyacountyguide.com/wp-content/uploads/2016/11/makueni-map.jpg>

Dar(a)jani

<http://www.postmarks.co.za/PH%20Kenya%20Broderick%20Falls%20to%20Duke%20Street.htm>:

“DARJANI. 01.12.1925 to 10.07.1931. Railway Agency mile 175”.

Emali



<http://www.postmarks.co.za/images/Emali%201956.jpg>: “EMALI. 01.06.1926 to 11.12.1963. Railway agency on main line mile 242”.

Kibwezi



<http://www.postmarks.co.za/images/Kibwezi%201910.jpg>: "KIBWEZI. 08.03.1900 to 19.04.1900. 01.07.1904 to 11.12.1963.. Mile 197 on main line".

<http://www.postmarks.co.za/images/Kibwezi%201944.jpg>

<http://www.postmarks.co.za/images/Kibwezi%201955.jpg>

Kima



<http://www.postmarks.co.za/images/KIMA.jpg>: "KIMA. 1922 to 11.12.1963 . Railway agency at mile 260 on main line".

Kiu



<http://www.postmarks.co.za/images/Kiu%201900.jpg>: “KIU.15.09.1900 to 20.05.1902. 01.10.1904 to 11.12.1963. 390 km on main line”.

<http://www.postmarks.co.za/images/Kiu%201935.jpg>

Makindu



<http://thumbs.ebaystatic.com/images/g/n~0AAOSwzqFY~5aj/s-l225.jpg>

<http://www.postmarks.co.za/images/Makindu%201951.jpg>: “MAKINDU. 01.06.1900 to 04.11.1918; 26.04.1921 to 11.12.1963. Railway agency on main line”.

<http://www.postmarks.co.za/PH%20Kenya%20Macalder%20to%20Makuyu.htm>: “MAKUENI (MACHAKOS). 20.01.1954 to 12.08.1955; 15.12.1955 to 11.12.1963”.

Masongaleni



<http://www.postmarks.co.za/images/Masongaleni%201938.jpg>: “MASONGALENI.01.10.1904 to 1960. On main railway line”.

Mtito Andei



<http://www.postmarks.co.za/images/Mtito%20Andei%201961.jpg>: "MTITO ANDEI. 01.10.1904 to 01.06.1936; 29.11.1939 to 11.12.1963. On main line".

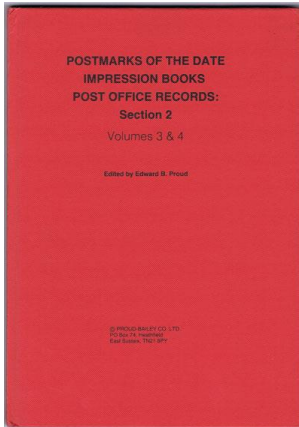
GENERAL: Experimental Post Office



<http://www.postmarks.co.za/images/Experimental%20PO.jpg>: "EXPERIMENTAL P.O. 13.09.1900 to 25.08.1903".

A Note on Sources

Besides a variety of internet sources (all given below each of the respective illustrations), a very useful source has been: www.postmarks.co.za. However, for Kenya they have only reached 'Nakuru'. Like we do, they sometimes use Hamilton auction material. But their most informative source is a book by Edward Proud, e.g.,:



PROUD E.B. Postmarks of the Date Impression Books - Post Office Records: Section 2. Volumes 3 & 4. Proud Bailey (1983). 96pp. 1st ed., fine in original red cloth. Postal markings proofed between 1839 - 1841, mostly British but a few for the colonies included (<http://www.pennymead.com/results.php?ct=1&sub=235>).

See: My Email:Fritsab@outlook.com FRITS AAB

Last updated 14th of January 2017