



Universiteit  
Leiden  
The Netherlands

## **Obesity and type 2 diabetes : cardiovascular and cerebral aspects**

Widya, R.L.; Widya R.L.

### **Citation**

Widya, R. L. (2017, September 5). *Obesity and type 2 diabetes : cardiovascular and cerebral aspects*. Retrieved from <https://hdl.handle.net/1887/54684>

Version: Not Applicable (or Unknown)

License: [Licence agreement concerning inclusion of doctoral thesis in the Institutional Repository of the University of Leiden](#)

Downloaded from: <https://hdl.handle.net/1887/54684>

**Note:** To cite this publication please use the final published version (if applicable).

Cover Page



Universiteit Leiden

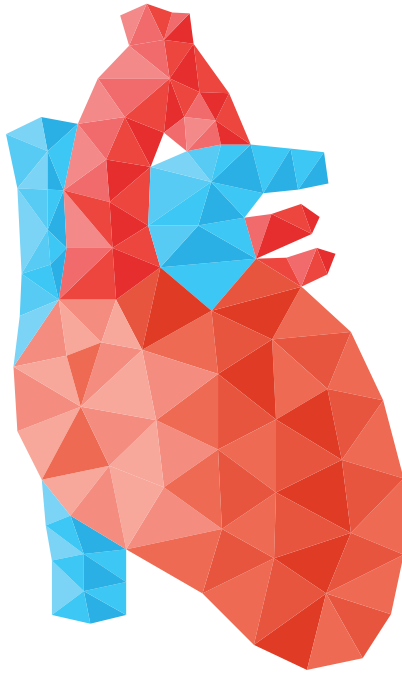


The handle <http://hdl.handle.net/1887/54684> holds various files of this Leiden University dissertation

**Author:** Widya, Ralph Lennart

**Title:** Obesity and type 2 diabetes : cardiovascular and cerebral aspects

**Issue Date:** 2017-09-05



# **PART 1**

CARDIOVASCULAR SYSTEM