



Universiteit
Leiden
The Netherlands

Obesity and type 2 diabetes : cardiovascular and cerebral aspects

Widya, R.L.; Widya R.L.

Citation

Widya, R. L. (2017, September 5). *Obesity and type 2 diabetes : cardiovascular and cerebral aspects*. Retrieved from <https://hdl.handle.net/1887/54684>

Version: Not Applicable (or Unknown)

License: [Licence agreement concerning inclusion of doctoral thesis in the Institutional Repository of the University of Leiden](#)

Downloaded from: <https://hdl.handle.net/1887/54684>

Note: To cite this publication please use the final published version (if applicable).

Cover Page



Universiteit Leiden



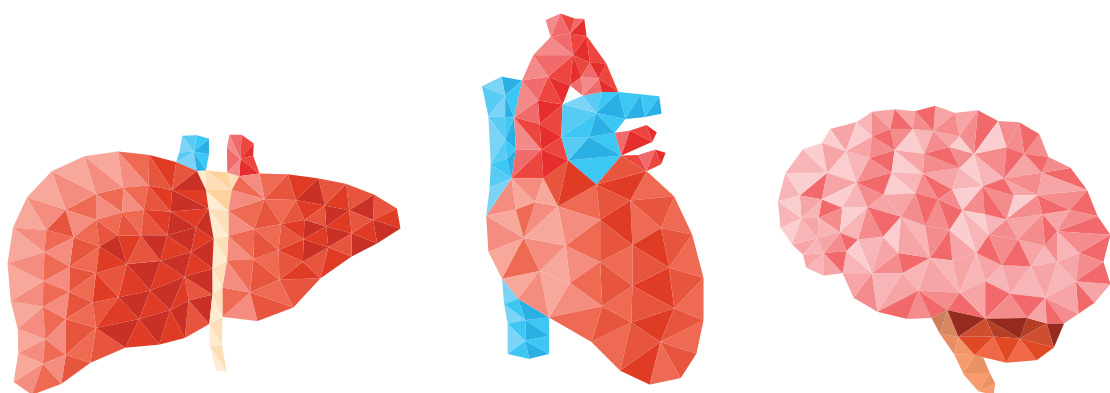
The handle <http://hdl.handle.net/1887/54684> holds various files of this Leiden University dissertation

Author: Widya, Ralph Lennart

Title: Obesity and type 2 diabetes : cardiovascular and cerebral aspects

Issue Date: 2017-09-05

OBESITY AND TYPE 2 DIABETES



CARDIOVASCULAR
AND CEREBRAL
ASPECTS

RALPH L. WIDYA