



Universiteit
Leiden
The Netherlands

Facing society : A study of identity through head shaping practices among the indigenous peoples of the Caribbean in the ceramic age and colonial period

Duijvenbode, A. van

Citation

Duijvenbode, A. van. (2017, May 16). *Facing society : A study of identity through head shaping practices among the indigenous peoples of the Caribbean in the ceramic age and colonial period*. Retrieved from <https://hdl.handle.net/1887/49749>

Version: Not Applicable (or Unknown)

License: [Licence agreement concerning inclusion of doctoral thesis in the Institutional Repository of the University of Leiden](#)

Downloaded from: <https://hdl.handle.net/1887/49749>

Note: To cite this publication please use the final published version (if applicable).

Cover Page



Universiteit Leiden



The handle <http://hdl.handle.net/1887/49749> holds various files of this Leiden University dissertation

Author: Duijvenbode, A. van

Title: Facing society: A study of identity through head shaping practices among the indigenous peoples of the Caribbean in the ceramic age and colonial period

Issue Date: 2017-05-16

REFERENCES

- Acsádi, G., and J. Nemeskéri
1970 *History of Human Life Span and Mortality*. Akadémiai Kiadó, Budapest.
- Akgül, A. A., and T. U. Toygar
2002 Natural Craniofacial Changes in the Third Decade of Life: a Longitudinal Study. *American Journal of Orthodontics and Dentofacial Orthopedics* 122(5):512-522.
- Algee-Hewitt, B. F. B., and A. D. Wheat
2016 The Reality of Virtual Anthropology: Comparing Digitizer and Laser Scan Data Collection Methods for the Quantitative Assessment of the Cranium. *American Journal of Physical Anthropology* 160:148–155.
- Allaire, J.
2013 Ethnohistory of the Caribs. In *The Oxford Handbook of Caribbean Archaeology*, edited by W. F. Keegan, C. L. Hofman, and R. Rodríguez Ramos, pp. 97-108. Oxford University Press, Oxford.
- Allaire, L.
1997 The Caribs of the Lesser Antilles. In *The Indigenous People of the Caribbean*, edited by S. M. Wilson, pp. 177-185. University Press of Florida, Gainesville.
- Allegría, R., H. B. Nicholson, and G. R. Willey
1955 The Archaic Tradition in Puerto Rico. *American Antiquity* 21(2):113-21.
- Allison, M. J., E. Gerszstein, J. Munizaga, E. Santoro, and E. Focacci
1981 La practica de la deformación craneana entre los pueblos Andinos precolombinos. *Chungara Revista de Antropología Chilena* 7:238–260.
- Allsworth-Jones, P.
2008 *Pre-Columbian Jamaica*. University of Alabama Press, Tuscaloosa.
- Allsworth-Jones, P., A. L. Santos, and R. S. Stewart
2011 Recent archaeological and anthropological evidence from Belle Air Cave, Jamaica. *Proceedings of the 23rd Congress of the International Association for Caribbean Archaeology, Antigua*, 2009:743-750.

- Amic, M.
1791 Sur les Têtes des Caraïbes. *Journal de Physique* 39:132-136.
- Annual Report of the Board of Regents of the Smithsonian Institution
1903 showing the operations, expenditures, and condition of the institution for the year ending June 30, 1901. Report of the U.S. National Museum. Government Printing Office, Washington DC.
- Antczak, A.
1998 *Late Prehistoric Economy and Society of the Islands off the Coast of Venezuela: a Contextual Interpretation of the Non-Ceramic Evidence*. Ph.D. dissertation, University of London, London.
- Antczak, M. M.
2000 *Idols in Exile: Making Sense of Prehistoric Human Pottery Figurines from Dos Mosquises Island, Los Roques Archipelago, Venezuela*. Ph.D. dissertation, University of London, London.
- Antczak, M. M., and A. Antczak
2006 *Los ídolos de las islas prometidas: arqueología prehispanica del archipiélago de Los Roques*. Editorial Equinoccio, Caracas.
- Anton, S. C.
1989 Intentional Cranial Vault Deformation and Induced Changes of the Cranial Base and Face. *American Journal of Physical Anthropology* 79(2):253-267.
- Anton, S. C., C. R. Jaslow, and S. M. Swartz
1992 Sutural Complexity in Artificially Deformed Human (Homo Sapiens) Crania. *Journal of Morphology* 214(3):321-332.
- Antón, S. C., and K. J. Weinstein
1999 Artificial Cranial Deformation and Fossil Australians Revisited. *Journal of Human Evolution* 36(2):195-209.
- Atilés, G.
2004 *Excavaciones Arqueológicas de Punta Macao. Informe de Campo*. Secretaria de Estado de Cultura. Museo del Hombre Dominicano, Santo Domingo.
- Baadsgaard A., A. T. Boutin, and J. E. Buikstra (editors)
2012 *Breathing New Life into the Evidence of Death*. School for Advanced Research Press, Santa Fe.
- Babić, S.
2005 Status Identity and Archaeology. In *The Archaeology of Identity, Approaches to Gender, Age, Status, Ethnicity and Religion*, edited by M. Díaz-Andreu, S. Lucy, S. Babić, and D. N. Edwards, pp. 67-85. Routledge, London.

- Barbotin, M.
1969 Arawaks et Caraïbes à Marie-Galante. *Bulletin de la Société d'histoire de la Guadeloupe* 11:77-119.
- Barrère, P.
1743 *Nouvelle relation de la France équinoxiale, contenant la description des côtes de la Guiane; de l'isle de Cayenne; le commerce de cette colonie; les divers changemens arrivés dans ce pays; & les moeurs & coutumes des différens peuples sauvages qui l'habitent*. Piget, Paris.
- Barge, J. A. J.
1912 *Friesche en Marker Schedels, Bijdrage tot de Kennis van de Anthropologie der Bevolking van Nederland*. Ph.D. Dissertation. Department of Medicine, University of Amsterdam, the Netherlands. Losco, Amsterdam.
- Barth, F.
1969 Introduction. In *Ethnic Groups and Boundaries; the Social Organization of Culture Difference*, edited by F. Barth, pp. 9-38. Little, Brown, Boston.
- Bass, W. M.
1987 *Human Osteology: A Laboratory and Field Manual*. 3rd ed. Special Publication No. 2 of the Missouri Archaeological Society. Missouri Archaeological Society, Columbia.
- Bawden, G.
2005 Ethnogenesis at Galindo, Peru. In *Us and Them: Archaeology and Ethnicity in the Andes*, edited by R. M. Reycraft, pp 12-33. Cotsen Institute of Archaeology, University of California, Los Angeles.
- Bayliss, A., R. Valcárcel Rojas, C. B. Ramsey, S. Gulliksen, and J. van der Plicht
2012 Preliminary Radiocarbon Dating Report for the cemetery at El Chorro de Maíta, Cuba. In *Interacción colonial en un pueblo de indios encomendados: el Chorro de Maíta, Cuba*, by R. Valcárcel Rojas. Unpublished Ph.D. thesis, Faculty of Archaeology, Leiden University.
- Bennett, K. A.
1965 The Etiology and Genetics of Wormian Bones. *American Journal of Physical Anthropology* 23(3):255-260.
- Bennett, W. C.
1937 *Excavations at La Mata, Maracay, Venezuela*. American Museum of Natural History, New York.
- Bentley, G. C.
1987 Ethnicity and Practice. *Comparative Studies in Society and History* 29(1):24-55.

- Bérard, B.
2013 The Saladoid. In *The Oxford Handbook of Caribbean Archaeology*, edited by W. F. Keegan, C. L. Hofman, and R. Rodríguez Ramos, pp. 184-197. Oxford University Press, Oxford.
- Berry, A. C., and R. J. Berry
1967 Epigenetic Variation in the Human Cranium. *Journal of Anatomy* 101(2):361-379.
- Blackwood, B., and P. M. Danby
1955 A Study of Artificial Cranial Deformation in New Britain. *The Journal of the Royal Anthropological Institute of Great Britain and Ireland* 85(1/2):173-191.
- Blom, D. E.
2005a Embodying Borders: Human Body Modification and Diversity in Tiwanaku Society. *Journal of Anthropological Archaeology* 24:1-24.
2005b A Bioarchaeological Approach to Tiwanaku Group Dynamics. In *Us and Them: Archaeology and Ethnicity in the Andes*, edited by R. M. Reycraft, pp. 153-182. Cotsen Institute of Archaeology, University of California, Los Angeles.
- Blom, D. E., B. Hallgrímsson, L. Keng, M. C. Lozada, and J. E. Buikstra
1998 Tiwanaku 'colonization': bioarchaeological implications for migration in the Moquegua Valley, Peru. *World Archaeology* 30(2):238-261.
- Blumenbach, J. F.
1790 *Decas collectionis suae craniorum diversarum gentium illustrata*. I.C. Dieterich, Gottingae.
- Boas, F.
1894 *Chinook texts*. US Government Printing Office, Washington DC.
1909 *The Kwakiutl of Vancouver Island*. The Jesup North Pacific Expedition. Memoir of the American Museum of Natural History, New York, Volume V, Part II. E.J. Brill, Leiden.
- Boomert, A.
1975 *Archeologische vindplaatsen in Suriname*. Surinaamse Archeologische Dienst, rapport 1. Stichting Surinaams Museum, Paramaribo.
1980 Hertenrits: An Arauquinoid complex in North West Suriname (Part 1). *Journal of Archaeology and Anthropology* 3(2):68-104.
2000 *Trinidad, Tobago and the Lower Orinoco Interaction Sphere, an archaeological/ethnohistorical study*. Plantijn-Casparie, Heerhugowaard, the Netherlands.
2001 Saladoid sociopolitical organization. *Proceedings of the 18th Congress of the International Association for Caribbean Archaeology, Grenada, 1999*:55-77.
2011 From Cayo to Kalinago: aspects of Island Carib archaeology. In *Communities in Contact: Essays in Archaeology, Ethnohistory and Ethnography of the Amerindian Circum-Caribbean*, edited by C. L. Hofman and A. van Duijvenbode, pp. 291-306. Sidestone Press, Leiden.

- Boomert, A. (continued)
 2014 The Caribbean islands. In *The Cambridge World Prehistory, volume 2: East Asia and the Americas*, edited by C. Renfrew and P. G. Bahn, pp. 1207-1224. University of Cambridge Press, Cambridge.
- Boomert, A., and S. B. Kroonenberg
 1977 Manufacture and Trade of Stone Artefacts in Prehistoric Surinam. In *Ex Horreo: IPP 1951-1976*, edited by B.L. van Beek, R.W. Brandt, and W. Groenman-van Waateringe, pp. 9-46. Cingvla 4, Universiteit van Amsterdam.
- Bonogofsky, M.
 2005 A Bioarchaeological Study of Plastered Skulls from Anatolia: New Discoveries and Interpretations. *International Journal of Osteoarchaeology* 15(2):124-135.
 2015 *The Bioarchaeology of the Human Head: Decapitation, Decoration, and Deformation*. University Press of Florida, Gainesville.
- Boruchoff, J.
 1986 *Register to the papers of William Louis Abbott*. National Anthropological Archives, Washington, D.C.
- Boston, C. E.
 2012 *Investigations of the Biological Consequences and Cultural Motivations of Artificial Cranial Modification Among Northern Chilean Populations*. Ph.D. dissertation, The University of Western Ontario, Canada.
- Bourdieu, P.
 1977 *Outline of a Theory of Practice*. Cambridge University Press, Cambridge.
- Branch, C. W.
 1907 Aboriginal Antiquities in Saint Kitts and Nevis. *American Anthropologist New Series* 9:315-333.
- Brass, P. R.
 1991 *Ethnicity and Nationalism. Theory and Comparison*. Sage Publications, London.
- Breton, Père R.
 1978 *Relations de l'île de la Guadeloupe. Bibliothèque d'histoire antillaise*. Société d'histoire de la Guadeloupe, Basse-Terre.
 1999 [1665] *Dictionnaire Caraïbe- Français*. Karthala, Paris.
- Bright, A. J.
 2011 *Blood is thicker than water: Amerindian intra-and inter-insular relationships and social organization in the pre-Colonial Windward Islands*. Sidestone Press, Leiden.

- Broca, P.
1875 *Instructions craniologiques et craniométriques*. Masson, Paris.
- Bronfin, D. R.
2001 Misshapen Heads in Babies: Position or Pathology? *The Ochsner Journal* 3:191-199.
- Brooks, W.K.
1887 *On the Lucayan Indians*. National Academy of Sciences, Volume IV, Tenth Memoir:215-223.
- Brothwell, D. R.
1981 *Digging up Bones: the Excavation, Treatment, and Study of Human Skeletal Remains*. Cornell University Press, Ithaca.
- Brues, A. M.
1992 Forensic Diagnosis of Race—General Race vs Specific Populations. *Social Science & Medicine* 34(2):125-128.
- Brown, P.
1981 Artificial Cranial Deformation: a Component in the Variation in Pleistocene Australian Aboriginal Crania. *Archaeology in Oceania* 16(3):156-167.
- Brubaker, R., and F. Cooper
2000 Beyond “Identity”. *Theory and Society* 29(1):1-47.
- Budinoff, L.C.
1991 Osteological Analysis of Human Burials Recovered from Maisabel: An Early Ceramic Site, P.R. *Proceedings of the 12th Congress of the International Association for Caribbean Archaeology, French Guiana, 1987*:117-133.
- Buikstra, J. E. and D. H. Ubelaker
1994 *Standards for Data Collection from Human Skeletal Remains*. Proceedings of a Seminar at the Field Museum of Natural History. Arkansas Archaeological Survey Research Series no 44.
- Buikstra, J. E., and R. E. Scott
2009 Key Concepts in Identity Studies. In *The Bioarchaeology of Identity*, edited by K. J. Knudson and C. M. Stojanowski, pp. 24-55. University Press of Florida, Gainesville.
- Bullbrook, J.A.
1953 *On the Excavation of a Shell Mound at Palo Seco*, Trinidad, B.W.I. Yale University Publications in Anthropology no. 50. Yale University, New Haven.

- Bullen, R. P.
1964 *The Archaeology of Grenada, West Indies*. Contributions of the Florida State Museum, No. 11. University of Florida, Gainesville.
- Byron, R.
2002 Identity. In *Encyclopedia of Social and Cultural Anthropology*, edited by A. Barnard and J. Spencer, p. 292. Routledge, London & New York.
- Byers, S. N.
2008 *Introduction to Forensic Anthropology*. 3rd ed. Pearson/Allyn and Bacon, Boston.
- Caesar, M., and P. Lundberg
1991 The Calabash Boom Site, St. John, USVI: Preliminary Report. *Proceedings of the twelfth International Congress for Caribbean Archaeology, French Guyana, 1987*: 203-215.
- Callahan, R. T.
2008 On the Question of the Absence of Archaic Age Sites on Jamaica. *Journal of Island and Coastal Archaeology* 3(1):54-71.
- Cardoso, H. F., and S. R. Saunders
2008 Two Arch Criteria of the Ilium for Sex Determination of Immature Skeletal Remains: a Test of their Accuracy and an Assessment of Intra-and Inter-Observer Error. *Forensic Science International* 178(1):24-29.
- Carpenter, R. G., L. M. Irgens, P. Blair, P. D. England, P. Fleming, J. Huber, G. Jorch, and P. Schreuder
2004 Sudden Unexplained Infant Death in Europe: Findings of the European Concerted Action on SIDS, ECAS. *Lancet* 363:185-191.
- Carr, R. S., W. C. Schaffer, and M. P. Pateman
2007 Investigations of Five Lucayan Graves in Preacher's Cave, Eleuthera, Bahamas. *Proceedings of the 22nd Congress of the International Association for Caribbean Archaeology, Jamaica, 2007*:1-14.
- Caspari, R.
2003 From Types to Populations: A Century of Race, Physical Anthropology, and the American Anthropological Association. *American Anthropologist* 105(1):65-76.
- Chanlatte Baik, L. A.
1990 Cultura Ostionoide: Un Desarrollo Algroalfarero Antillano. *Proceedings of the 11th Congress of the International Association for Caribbean Archaeology, Puerto Rico, 1989*:312-327.

- Chanlatte Baik, L. A., and Y. M. Narganes Storde
1986 *Proceso y desarrollo de los primeros pobladores de Puerto Rico y las Antillas*. Santo Domingo.
2005 *Cultura La Hueca*. Museo de Historia, Antropología y Arte, Universidad de Puerto Rico, Río Piedras.
- Chacon, R. J., and D. H. Dye (editors)
2007 *The Taking and Displaying of Human Body Parts as Trophies by Amerindians*. Springer, New York.
- Chanvalon
1761 *Voyage à la Martinique, contenant diverses observations sur la physique, l'histoire naturelle, l'agriculture, les moeurs, & les usages de cette Isle, faites en 1751 & dans les années suivantes*. L'Académie Royale des Sciences de Paris, Paris.
- Charlevoix, P. F. X. de
1730 *Histoire de l'Isle Espagnole ou de S. Domingue [Saint-Domingue]*. Barois, Paris.
- Cheverud, J. M., L. A. Kohn, L. W. Konigsberg, and S. R. Leigh
1992 Effects of Fronto-Occipital Artificial Cranial Vault Modification on the Cranial Base and Face. *American Journal of Physical Anthropology* 88(3):323-345.
- Cheng, J. C., and A. W. Au
1994 Infantile Torticollis: a Review of 624 Cases. *Journal of Pediatric Orthopaedics* 14(6):802-808.
- Clark, J. L., S. D. Dobson, S. C. Antón, J. Hawks, K. L. Hunley and M. H. Wolpoff
2007 Identifying Artificially Deformed Crania. *International Journal of Osteoarchaeology* 17:596-607.
- Clarke, D. L.
1968 *Analytical Archaeology*. Methuen, London.
- Clerc, E.
1968 Sites précolombiens de la coté Nord-Est de la Grande-Terre de Guadeloupe. *Proceedings of the 2nd Congress of the International Association for Caribbean Archaeology, Barbados, 1973*:47-60.
1970 Archaeological Research in Guadeloupe. *Paralleles* 36/37:1-102.
- Cody Holdren,
1998 *Raiders and Traders: Caraïbe Social and Political Networks at the Time of European Contact and Colonization in the Eastern Caribbean*. Ph.D. dissertation, University of California at Los Angeles.
- Coelho, R.
1949 The Significance of the Couvade among the Black Caribs. *Man* 49(63-78):51-53.

- Cohen, A. P.
 1986 Of Symbols and boundaries, or, does Ertie's greatcoat hold the key? In *Symbolising boundaries. Identity and diversity in British cultures*, edited by A. P. Cohen, pp 1-19. Manchester University Press, Manchester.
 1994 *Self Consciousness. An Alternative Anthropology of Identity*. Routledge, London and New York.
- Cohen, M. M., Jr.
 1993 Sutural Biology and the Correlates of Craniosynostosis. *American Journal of Medical Genetics* 47:581-616.
- Comaroff, J., and J. Comaroff
 1992 *Ethnography and the Historical Imagination*. Westview Press, Boulder.
- Conklin, B. A.
 1996 Reflections on Amazonian Anthropologies of the Body. *Medical Anthropology Quarterly* 10(3):373-375.
- Conklin, B. A., and L. M. Morgan.
 1996 Babies, Bodies, and the Production of Personhood in North America and a Native Amazonian Society. *Ethos* 24(4):657-694.
- Conzemius, E.
 1928 Ethnographical notes on the Black Carib (Garif). *American Anthropologist* 30(2):183-205.
- Cooper, J., and R. Boothroyd
 2011 Living islands of the Caribbean. A view of relative sea level change from the water's edge. In *Communities in contact. Essays in archaeology, Ethnohistory and Ethnography of the Amerindian circum-Caribbean*, edited by C. L. Hofman and A. van Duijvenbode, pp. 393-406. Sidestone Press, Leiden.
- Cooper, V. O.
 1997 Language and Gender among the Kalinago of Fifteenth-century St. Croix. In *The Indigenous Peoples of the Caribbean*, edited by S. M. Wilson, pp. 186-196. University Press of Florida, Gainesville.
- Coppa, A., A. Cucina, B. Chiarelli, F. Luna Calderon, and D. Mancinelli
 1995 Dental Anthropology and Paleodemography of the Precolumbian Populations of Hispaniola from the Third Millennium BC to the Spanish Conquest. *Human Evolution* 10(2):153-167.
- Corbey, R.
 2007 *Snellen om Namen: De Marind Anim van Nieuw-Guinea door de ogen van de Missionarissen van het Heilig Hart, 1905-1925*. KITLV, Leiden.

- Cornell, S., and D. Hartmann
1998 *Ethnicity and Race. Making Identities in a Changing World*. Pine Forge Press, Thousand Oaks.
- Côté, J.E., and C. Levine
2002 *Identity Formation, Agency, and Culture: a Social Psychological Synthesis*. L. Erlbaum Associates, Mahwah, New Jersey.
- Cox, R.
1831 *Adventures on the Columbia River including the Narrative of a Residence of Six Years on the Western Side of the Rocky Mountains among Various Tribes of Indians hitherto unknown : together with a journey across the American continent*. H. Colburn and R. Bentley, London.
- Crespo Torres, E. F.
2000 *Estudio Comparativo Biocultural entre dos Poblaciones Prehistoricas en la Isla de Puerto Rico : Punta Candalero y Paso del Indio*. Ph.D. Dissertation. Universidad Nacional Autonoma de Mexico.
2005 La Cultura Huecoide y su Conexión con la Introducción de la Práctica de la Deformación Cefálica Intencional en las Antillas. In *Cultura La Hueca*, edited by L. A. Chanlatte Baik and Y. M. Narganes Storde, pp. 57-66. Museo de Historia, Universidad de Puerto Rico.
2010 Ancient Bones Tell Stories. Osteobiography of Human Remains from Tibes. In *Tibes. People, Power, and Ritual at the Center of the Cosmos*, edited by L. A. Curet and L. M. Stringer, pp. 191-208. The University of Alabama Press, Tuscaloosa.
- Crespo Torres, E. F., H. L. Mickleburgh, and R. Valcárcel Rojas
2013 The Study of Pre-Columbian Human Remains in the Caribbean Archipelago: From Descriptive Osteology to a Bioarchaeological Approach. In *The Oxford Handbook of Caribbean Archaeology*, edited by W. F. Keegan, C. L. Hofman, and R. Rodríguez Ramos, pp. 436-451. Oxford University Press, Oxford.
- Crock, J. G.
2000 *Interisland interaction and the development of chiefdoms in the Eastern Caribbean*. Ph.D. dissertation, University of Pittsburgh, Pittsburgh.
- Cruxent, J.M., and I. Rouse
1958/1959 *An Archaeological Chronology of Venezuela*. Social Science Monographs VI. Pan American Union, Washington D.C.
- Curet, L. A.
2003 Issues on the Diversity and Emergence of Middle-Range Societies of the Ancient Caribbean: A Critique. *Journal of Archaeological Research* 11(1):1-42.
2014 The Taíno: Phenomena, Concepts, and Terms. *Ethnohistory* 61(3):467-495.

- Curet, L. A., and J. R. Oliver
1998 Mortuary practices, social development, and ideology in Precolumbian Puerto Rico. *Latin American Antiquity* 9(3):217-239.
- Curet, L. A., J. Torres, and M. Rodriguez
2004 Political and Social History of Eastern Puerto Rico: the Ceramic Age. In *Late Ceramic Age Societies in the Eastern Caribbean*, edited by A. Delpuech and C. L. Hofman, pp. 59-86. BAR International Series 1273. Archaeopress, Oxford.
- Dacal Moure, R., and M. Rivero De La Calle
1997 *Art and Archaeology of pre-Columbian Cuba*. University of Pittsburgh Press, Pittsburgh.
- Davidson, G.
1788 *The Case of the Caribbs in St. Vincent's*. London.
- Davies, J.
1666 *The History of the Caribby-Islands, viz, Barbados, St Christophers, St Vincents, Martinico, Dominco, Barbouthos, Monserrat, Mevis, Antego &c in all XXVIII in two books : the first containing the natural, the second, the moral history of those islands : illustrated with several pieces of sculpture representing the most considerable rarities therein described : with a Caribbian vocabulary*. Starkey and Dring, London.
- Davis, D. D., and R. C. Goodwin.
1990 Island Carib Origins: Evidence and Nonevidence. *American Antiquity* 55(1):37-48.
- De Booy, T.
1917 Certain Archaeological Investigations in Trinidad, British West Indies. *American Anthropologist New Series* 19(4):471-486.
- Certeau, M. de, and S. Rendall
1984 *The Practice of Everyday Life*. University of California Press, Berkeley.
- La Borde, Sieur de
1674 *Relation de l'origine, moeurs, coustumes, religion, guerres et voyages des Caraibes, sauvages des isles Antilles de l'Amerique*. Billaine, Paris.
- Deagan, K.
2004 Reconsidering Taino Social Dynamics after Spanish Conquest: Gender and Class in Culture Contact Studies. *American Antiquity* 69:597-626.

- Del Papa, M. C., and S.I. Perez
 2007 The Influence of Artificial Cranial Vault Deformation on the Expression of Cranial Nonmetric Traits: its Importance in the Study of Evolutionary Relationships. *American Journal of Physical Anthropology* 134(2):251-262.
- Delisle, F.
 1902 Les Déformations Artificielles du Crane en France. Carte de leur Distribution. *Bulletins et Mémoires de la Société d'Anthropologie de Paris* 3(5):111-167.
- Delpuech, A., C. L. Hofman, and M. L. P. Hoogland
 1995 Le Moule: Morel. *Bilan Scientifique de la Région Guadeloupe 1992-1994*:22-23.
 1997 Fouilles sur le site précolombien de l'Anse à la Gourde (Saint-François, Guadeloupe). *Journal de la Societe des Americanistes* 83(1):279-282.
 ND *Report on the excavations at the Morel Site, Le Moule, Guadeloupe (FWT)*. Unpublished report, Leiden University.
- Dembo, A., and J. Imbelloni
 1938 *Deformaciones Intencionales del Cuerpo Humano de Caracter Etnico*. Humanior, biblioteca del americanista moderno, Sección A. Propedeútica 3. Jose Anesi, Bueno Aires.
- Díaz-Andreu, M., and S. Lucy
 2005 Introduction. In *The Archaeology of Identity, Approaches to Gender, Age, Status, Ethnicity and Religion*, edited by M. Díaz-Andreu, S. Lucy, S. Babić, and D. N. Edwards, pp. 1-12. Routledge, London & New York.
- Díaz-Andreu, M., S. Lucy, S. Babić, and D. N. Edwards
 2005 *The Archaeology of Identity. Approaches to Gender, Age, Status, Ethnicity and Religion*. Routledge. London & New York.
- Dingwall, E. J.
 1931 *Artificial Cranial Deformation, a Contribution to the Study of Ethnic Mutilations*. John Bale, Sons & Danielsson, London.
- Dorsey, G. A.
 1897 Wormian Bones in Artificially Deformed Kwakiutl Crania. *American Anthropologist* 10:169-173.
- Dorst, M. C.
 2008 *Preliminary Research Report: The pre-Columbian SAN-1 Site, Manzanilla, Trinidad October 2007*. Unpublished report, Faculty of Archaeology, Leiden University.
- Douglas, L.
 1998 The Shrunken Head of Buchenwald: Icons of Atrocity at Nuremberg. *Representations* 63:39-64.

- Douglas, M.
2007 *Natural Symbols. Explorations in Cosmology*. 2nd ed. Routledge, London.
- Drew, R.
2003 A Survey of Pre-Columbian Human Skeletal Material from Puerto Rico. *Proceedings of the 20th Congress of the International Association for Caribbean, Dominican Republic*, 2003:235-242.
2009 From Saladoid to Taíno: Human Behavior from Human Remains in the Greater Antilles. *Bulletin of the Peabody Museum of Natural History* 50(1):167-185.
- Drewett, P. L.
1991 *Prehistoric Barbados*. Archetype publications, Denbigh, United Kingdom.
2004 Post-Saladoid Society on Barbados. In *Late Ceramic Age Societies in the Eastern Caribbean*, edited by A. Delpuech and C. L. Hofman, pp. 215-230. BAR International Series 1273. Archaeopress, Oxford.
- Drusini, A., F. Businaro and F. Luna Calderón
1987 Skeletal Biology of the Taino: a Preliminary Report. *International Journal of Anthropology* 2(3):247-253.
- Du Rhy, C. J.
1960 *Notes in the pottery of Aruba, Curaçao and Bonaire*. Studies on the Archaeology of the Netherlands Antilles: 1. Natuurwetenschappelijke werkgroep Nederlandse Antillen, Curaçao.
- Duerden, J. E.
1895 Discovery of aboriginal Indian remains in Jamaica. *Nature* 52:173-174.
1897 Aboriginal Indian remains in Jamaica. *Journal of the Institute of Jamaica* vol. II, no. 4.
- Dunn, O., and J. E. Kelley
1991 *The Diario of Christopher Columbus's first voyage to America, 1492-1493*. University of Oklahoma Press, Norman.
- Duncan, W. N., and C. A. Hofling
2011 Why the head? Cranial Modification as Protection and Ensoulment among the Maya. *Ancient Mesoamerica* 22(01):199-210.
- Durand, J.-F, and H. Petitjean Roget
1991 A Propos d'un Collier Funéraire a Morel, Guadeloupe: Les Huecoide Sont-Ils un mythe? *Proceedings of the 12th International Congress for Caribbean Archaeology, French Guiana*, 1987:53-72.
- Du Tertre, J. B.
1654 *Histoire générale des îles de S. Christophe, de la Guadeloupe, de la Martinique, et autres dans l'Amérique*. J. Langlois et E. Langlois, Paris.

- Edwards, B.
1801 *The History of the British Colonies in the West Indies*. J. Stockdale, Piccadilly.
- Elliott, M., and M. Collard
2009 Fordisc and the Determination of Ancestry from Cranial Measurements. *Biology Letters* 5:849-852.
- El-Najjar, M. Y., and G. L. Dawson
1977 The Effect of Artificial Cranial Deformation on the Incidence of Wormian Bones in the Lambdoidal Suture. *American Journal of Physical Anthropology* 46:155-160.
- Emberling, G.
1997 Ethnicity in Complex Societies: Archaeological Perspectives. *Journal of Archaeological Research* 5(4):295-344.
- Entwistle, J.
2000 *The Fashioned Body. Fashion, Dress, and Modern Social Theory*. Polity Press, Cambridge.
- Encaribe
2014 Carlos de la Torre Huerta. *Encaribe Enciclopedia de Historia y Cultura del Caribe*. Accessed on 19-3-2014.
- Ensor, B. E.
2013 Kinship and social organization in the Pre-Hispanic Caribbean. In *The Oxford Handbook of Caribbean Archaeology*, edited by W. F. Keegan, C. L. Hofman, and R. Rodríguez Ramos, pp. 84-96. Oxford University Press, Oxford.
- Epstein, A. L.
1978 *Ethos and Identity. Three Studies in Ethnicity*. Tavistock Publications, London.
- Eriksen, T. H.
1993 *Ethnicity and Nationalism. Anthropological Perspectives*. Pluto Press, London.
- Erikson, E.
1950 *Child and Society*. W. W. Norton, New York.
- Espenshade, C.T., C. de la Rosa, H.B. Matternes, and S. Young
2014 *The Cultural Landscape of Jácana: Archaeological Investigations of Site PO-29, Municipio de Ponce, Puerto Rico. Volume II, Part 5: The People of Jácana*. New South Associates, Inc., Stone Mountain, Georgia. Submitted to the Jacksonville District, US Army Corps of Engineers, Jacksonville, Florida.

- Ewing, J. F.
 1950 *Hyperbrachycephaly as influenced by cultural conditioning*. Papers of the Peabody Museum of American Archaeology and Ethnology, Harvard University, Vol. 23, no. 2. The Museum, Cambridge.
- Fabrizii-Reuer, S., and E. Reuer
 2005 *Die Gräber aus den "Shell-middens" der präkolumbianischen Siedlung von Pointe de Caille, St. Lucia, West Indies*. Anthropologische Auswertung. Verlag der Österreichischen Akademie der Wissenschaften, Wien.
- Farabee, W. C.
 1922 *Indian tribes of eastern Peru*. Papers of the Peabody Museum of American Archaeology and Ethnology, Harvard University, vol. 10. The Museum, Cambridge.
- Farr, S. E.
 1993 *Test Excavations at Bloody Point, St. Kitts. Preliminary Report of Fieldwork*. Unpublished Report, St. Christopher Heritage Society, Basseterre, St. Kitts.
 1996 *Bloody Point Archaeological Project. Report of Fieldwork*. Unpublished Report, St Christopher Heritage Society, Basseterre, St. Kitts.
- Feriz, H.
 1959 *Zwischen Peru un Mexico*, 2 vols. Mededeling CXXXIV, Afdeling Culturele en Physische Anthropologie, Koninklijk Instituut voor de Tropen, Amsterdam.
- Fernandez de Ybarra, A. M.
 1907 The letter of Dr. Diego Alvarez Chanca, dated 1494, relating to the second voyage of Columbus to America. *Smithsonian Miscellaneous Collections* 48:428-457.
- Fewkes, J. W.
 1903a Preliminary Report on an Archaeological Trip to the West Indies. *Smithsonian Miscellaneous Collections* 45:112-113.
 1903b Prehistoric Porto Rican Pictographs. *American Anthropologist New Series* 5(3):441-467.
 1907 The Aborigines of Porto Rico and Neighboring Islands. *Twenty-Fifth Annual Report of the Bureau of American Ethnology: to the Secretary of the Smithsonian Institution, 1903-04*.
- Field, A.
 2013 *Discovering statistics using IBM SPSS statistics*. 4th ed. Sage, London.
- Finkel, D. J.
 1976 Wormian Bone Formation in the Skeletal Population from Lachish. *Journal of Human Evolution* 5(3):291-295.

- Fisher, G., and D. DiPaolo Loren
2003 Embodying Identity in Archaeology, Introduction. *Cambridge Archaeological Journal* 13:225-230.
- Fitzpatrick, S. M.
2006 A Critical Approach to Dating in the Caribbean: Using Chronometric Hygiene to Evaluate Chronological Control and Prehistoric Settlement. *Latin American Antiquity* 17(4):389-418.
2013 Seafaring Capabilities in the pre-Columbian Caribbean. *Journal of Maritime Archaeology* 8(1):101-138.
- FitzSimmons, E., J. Prost, and S. Peniston
1998 Infant Head Molding: A Cultural Practice. *Archives of Family Medicine* 7:88-90.
- Fletcher, M., and G.R. Lock
2005 *Digging Numbers: Elementary Statistics for Archaeologists*. Oxford University Committee for Archaeology, Oxford.
- Flower, W. H.
1891 Exhibition of Two Skulls from a Cave in Jamaica. *The Journal of the Anthropological Institute of Great Britain and Ireland* 20:110-112.
1895 On the Recently Discovered Remains of the Aboriginal Inhabitants of Jamaica. *Nature* 52(1355):607-608.
1879 *Catalogue of the Specimens Illustrating the Osteology and Dentition of Vertebrated Animals, Recent and Extinct, contained in the Museum*. Royal College of Surgeons of England, London.
1898 *Essays on Museums and other Subjects connected with Natural History*. Macmillan, London.
- Friede, H.
1981 Normal Development and Growth of the Human Neurocranium and Cranial Base. *Scandinavian Journal of Plastic and Reconstructive Surgery* 15(3):163-169.
- Frieß, M., and M. Baylac
2003 Exploring Artificial Cranial Deformation using Elliptic Fourier Analysis of Procrustes Aligned Outlines. *American Journal of Physical Anthropology* 122(1):11-22.
- Fowler, C.
2004 *The Archaeology of Personhood. An Anthropological Approach*. Routledge, London and New York.
- Geller, P. L.
2004 *Transforming Bodies, Transforming Identities: A Consideration of pre-Columbian Maya Corporeal Beliefs and Practices*. Ph.D. dissertation, University of Pennsylvania.

- Geller, P. L. (continued)
 2006 *Altering Identities: Body Modifications and the Pre-Columbian Maya*. In *Social Archaeology of Funerary Remains*, edited by R. Gowland and C. J. Knüsel, pp. 279-291. Oxbow, Oxford.
- Gerszten, P. C.
 1993 An investigation into the practice of cranial deformation among the Pre-Columbian peoples of northern Chile. *International Journal of Osteoarchaeology* 3(2):87-98.
- Gerszten, P. C., and E. Gerszten
 1995 Intentional Cranial Deformation: A Disappearing Form of Self-mutilation. *Neurosurgery* 37:374-382.
- Giddens, A.
 1979 *Central Problems in Social Theory. Action, Structure, and Contradiction in Social Analysis*. Macmillan Press, London.
- Gill, G. W.
 1998 Craniofacial criteria in the skeletal attribution of race. In *Forensic osteology: Advances in the identification of human remains*, 2nd ed., edited by K.J. Reichs, pp. 293-317. C.C. Thomas, Springfield.
- Gill, G. W., and S. Rhine (editors)
 1990 *Skeletal Attribution of Race*. Anthropological Papers No. 4. Maxwell Museum of Anthropology, Albuquerque.
- Gillin, J.
 1948 Tribes of the Guianas. In *Handbook of South American Indians, Vol. 3*, edited by J.H. Steward, pp. 799-860. Bureau of American Ethnology, Bulletin 143. Smithsonian Institution, Washington, D.C.
- Glazer, N., and D. P. Moynihan
 1963 *Beyond the Melting Pot. The Negroes, Puerto Ricans, Jews, Italians, and Irish of New York City*. The M.I.T. Press and Harvard University Press, Cambridge.
- Goffman, E.
 1958 *The Presentation of Self in Everyday Life*. The Bateman Press, Edinburgh.
- Goldstein M. S.
 1940 Cranial deformation among Texas Indians. *American Journal of Physical Anthropology* 27:312-313.
- Gordon, C. C., and J. E. Buikstra
 1981 Soil PH, Bone Preservation, and Sampling Bias at Mortuary Sites. *American Antiquity* 46(3):566-571.

- Gosse, L. A.
1855 *Essai sur les déformations artificielles du crâne*. J.-B. Baillière, Paris.
- Gottlieb, K.
1978 Artificial Cranial Deformation and the Increased Complexity of the Lambdoid Suture. *American Journal of Physical Anthropology* 48(2):213-214.
- Gowland, R., and T. Thompson
2013 *Human Identity and Identification*. Cambridge University Press, Cambridge.
- Graham, E., S. E. Simmons, and C. D. White
2013 The Spanish conquest and the Maya collapse: how 'religious' is change? *World Archaeology* 45(1):161-185.
- Granberry, J.
1980 A Brief History of Bahamian Archaeology. *The Florida Anthropologist* 33(3):83-93.
2013 Indigenous languages of the Caribbean. In *The Oxford Handbook of Caribbean Archaeology*, edited by W. F. Keegan, C. L. Hofman, and R. Rodríguez Ramos, pp. 61-69. Oxford University Press, Oxford.
- Granberry, J., and G. Vescelius
2004 *Languages of the pre-Columbian Antilles*. University of Alabama Press, Tuscaloosa.
- Grossmann, T., M. H. Johnson, S. Lloyd-Fox, A. Blasi, F. Deligianni, C. Elwell, and G. Csibra
2008 Early Cortical Specialization for Face-to-Face Communication in Human Infants. *Proceedings of the Royal Society of London B: Biological Sciences* 275(1653):2803-2811.
- Grusec, J. E., and P. D. Hastings
2007 Introduction. In *Handbook of Socialization: Theory and Research*, edited by J. E. Grusec and P. D. Hastings, pp 1-12. Guilford Press, New York.
- Guarch Delmonte, J. M.
1988 Sitio Arqueológico El Chorro de Maíta. *Revista Cubana de Ciencias Sociales* 17:162-183.
1990 *Estructura para las comunidades aborígenes de Cuba*. Ediciones Holguín.
1996 La Muerte en las Antillas: Cuba. *El Caribe Arqueológico* 1:12-25.
- Guillen, S. E.
1992. *The Chinchorro culture: mummies and crania in the reconstruction of preceramic coastal adaptation in the south central Andes*. Ph.D. dissertation. University of Michigan, Ann Arbor.

- Gullick, C. J. M. R.
1976 *Exiled from St. Vincent. The Development of Black Carib Culture in Central America up to 1945*. Progress Press, Malta.
- Guzman, A.
2011 *From Puerto Rico to the Peabody: A Portrait of Samuel Kirkland Lothrop, his Harvard Puerto Rican Collection, And the History of Early Archaeological Studies on the Island*. Unpublished Bachelor Thesis, Department of Anthropology, Harvard University.
- Haddon, A. C.
1897 Note on the Craniology of the Aborigines of Jamaica. *Journal of the Institute of Jamaica vol. II, no. 4*.
- Haeberlin, H. K.
1917 Some Archaeological Work in Porto Rico. *American Anthropologist* 19(2):214-238.
- Hagen, E.
1996 AAPA Statement on Biological Aspects of Race. *American Journal of Physical Anthropology* 101(4):569-70.
- Hall, S.
1996 Introduction Who Needs 'Identity'? In *Questions of Cultural Identity*, edited by S. Hall and P. du Gay, pp 1-17. Sage, London.
- Hamilakis, Y., M. Pluciennik, and S. Tarlow
2002 Introduction: Thinking Through the Body. In *Thinking through the Body. Archaeologies of Corporeality*, edited by Y. Hamilakis, M. Pluciennik, and S. Tarlow, pp1-22. Kluwer Academic/Plenum Publishers, New York.
- Hanihara, T., and H. Ishida
2001 Frequency Variations of Discrete Cranial Traits in Major Human Populations. I:Supernumerary Ossicle Variations. *Journal of Anatomy* 198:689-706.
- Hansen, K. T.
2004 The World in Dress: Anthropological Perspectives on Clothing, Fashion, and Culture. *Annual Review of Anthropology* 33:369-392.
- Hatt, G.
1915 Artificial Moulding of the Infant's Head among the Scandinavian Lapps. *American Anthropologist New Series* 17(2):245-256.
1924 Archaeology of the Virgin Islands. *Proceedings of the 21st International Congress of Americanists* 1:29-42. The Hague.

- Harrington, M. R.
1921 *Cuba before Columbus*. Museum of the American Indian, Heye Foundation, New York.
- Hauser, G., and G. F. De Stefano
1989 *Epigenetic Variants of the Human Skull*. Schweizerbart, Stuttgart.
- Haviser, J. B.
1987 *Amerindian Cultural Geography on Curaçao*. Natuurwetenschappelijke Studiekring voor Suriname en de Nederlandse Antillen, Amsterdam.
- Hefner, J. T., D. S. Ousley, and D. C. Dirkmaat
2012 Morphoscopic Traits and the Assessment of Ancestry. In *A Companion to Forensic Anthropology*, edited by D. C. Dirkmaat, pp. 287-310. Wiley-Blackwell, Malden, Massachusetts.
- Henderson, J.
1987 Factors determining the State of Preservation of Human Remains. In *Death, Decay and Reconstruction: Approaches to Archaeology and Forensic Science*, edited by A. Boddington, A. N. Garland, and R. C. Janaway, pp. 43-54. Manchester University Press, Manchester.
- Henocq, C., and F. Petit
1999 Baie Rouge, Gisement Archéologique Tardif de Saint-Martin. *Proceedings of the 16th Congress of the International Association for Caribbean Archaeology, Guadeloupe*, 1995:316.
- Herrera Fritot, R., and C. L. Youmans
1946. *La Caleta: Joya arqueológica antillana. Exploración y estudio de un rico yacimiento indígena dominicano, y comparación de los ejemplares con los de Cuba y otros lugares. Craneografía, Craneometría y Craneotrigonometría de los restos humanos descubiertos*. La Habana.
- Herskovits, M. J.
1964 *Life in a Haitian Valley*. Octagon Books, New York.
- Herskovits, M. J., and F. S. Herskovits
1947 *Trinidad Village*. Alfred A Knopf, New York.
- Hodder, I.
1982 *Symbols in Action: Ethnoarchaeological Studies of Material Culture*. Cambridge University Press, Cambridge.

- Hofman, C. L.
 1993 *In Search of the Native Population of pre-Columbian Saba. Part One. Pottery Styles and their Interpretations*. Ph.D. dissertation, Faculty of Archaeology, Leiden University, Leiden.
- 2013 The Post-Saladoid in the Lesser Antilles (A.D. 600/800-1492). In *The Oxford Handbook of Caribbean Archaeology*, edited by W. F. Keegan, C. L. Hofman, and R. Rodríguez Ramos, pp. 205-220. Oxford University Press, New York.
- Hofman, C. L., A. Boomert, A. J. Bright, M. L. P. Hoogland, S. Knippenberg, and A. V. M. Samson
 2011 Ties with the “Homeland”: Archipelagic Interaction and the Enduring Role of the South American Mainland in the pre-Columbian Lesser Antilles. In *Islands at the Crossroads: Migration, Seafaring, and Interaction in the Caribbean*, edited by L. A. Curet and M. W. Hauser, pp. 73-86. University of Alabama Press, Tuscaloosa.
- Hofman, C. L., and A. J. Bright (editors)
 2010 Mobility and Exchange from a Pan-Caribbean Perspective. *Journal of Caribbean Archaeology*, Special Publication 3.
- Hofman, C. L., A. J. Bright, A. Boomert, and S. Knippenberg
 2007 Island Rhythms. The Web of Social Relationships and Interaction Networks in the pre-Columbian Lesser Antilles. *Latin American Antiquity* 18(3):243-268.
- Hofman, C. L., A. J. Bright, and M. L.P. Hoogland
 2006 Archipelagic Resource Mobility, Shedding Light on the 3000 year Old Campsite at Plum Piece, Saba (Northern Lesser Antilles). *Journal of Island and Coastal Archaeology* 1(2):145-164.
- Hofman, C. L., A. J. Bright, M. L.P. Hoogland, and W. F. Keegan
 2008 Attractive Ideas, Desirable Goods: Examining the Late Ceramic Age Relationships between the Greater and Lesser Antillean Societies. *The Journal of Island and Coastal Archaeology* 3(1):17-34.
- Hofman, C. L., and E.B. Carlin
 2010 The ever-dynamic Caribbean: Exploring New Approaches to Unraveling Social Networks in the pre-Colonial and early Colonial Periods. In *Linguistics and Archaeology in the Americas: The Historization of language and society*, edited by E.B. Carlin and S. van de Kerke, pp. 107-122. Brill, Leiden.
- Hofman, C. L., and M. L. P. Hoogland
 2004 Social Dynamics and Change in the Northern Lesser Antilles. In *Late Ceramic Age Societies in the Eastern Caribbean*, edited by A. Delpuech and C. L. Hofman, pp. 47-58. BAR International Series 1273. Archaeopress, Oxford.

- Hofman, C. L., and M. L. P. Hoogland (continued)
- 2011 The Multi-Scales of Mobility and Exchange in the pre-Colonial circum-Caribbean. In *Communities in contact. Essays in archaeology, Ethnohistory and Ethnography of the Amerindian circum-Caribbean*, edited by C. L. Hofman and A. van Duijvenbode, pp. 15-43. Sidestone Press, Leiden.
- 2012 Caribbean Encounters: Rescue Excavations at the early Colonial Island Carib Site of Argyle, St. Vincent. *Analecta Praehistorica Leidensia* 43/44:63-76.
- 2016 *Saba's First Inhabitants. A Story of 3300 years of Amerindian Occupation Prior to European Contact (1800 BC - AD 1492)*. Sidestone Press, Leiden.
- Hofman C. L., M. L. P. Hoogland, and A. Delpuech
- 2001 *Le site de l'Anse à la Gourde, Saint-François, Guadeloupe. Fouille programmée pluriannuelle 1995-2000. Rapport de Synthèse*. Leiden University/DRAC, Leiden/Saint-François.
- Hofman, C. L., M. L. P. Hoogland, H. L. Mickleburgh, J. E. Laffoon, D. A. Weston, and M. H. Field.
- 2012 Life and Death at Precolumbian Lavoutte, Saint Lucia, Lesser Antilles. *Journal of Field Archaeology* 37(3):209-225.
- Hofman, C. L., A. A. A. Mol, M. L. P. Hoogland, and R. Valcárcel Rojas
- 2014 Stage of Encounters: Migration, Mobility and Interaction in the pre-Colonial and early Colonial Caribbean. *World Archaeology* 46(4):590-609.
- Holliday, D. Y.
- 1993 Occipital Lesions: A Possible Cost of Cradleboards. *American Journal of Physical Anthropology* 90(3):283-290.
- Hoogland, M. L. P.
- 1996 *In Search of the Native Population of Pre-Columbian Saba (400-1450 A.D.) Part 2: Settlements in their Natural and Social Environment*. Ph.D. dissertation, Faculty of Archaeology, Leiden University, Leiden.
- Hoogland, M. L. P., and C. L. Hofman
- 1993 Kelbey's Ridge 2, a Fourteenth Century Taino Settlement on Saba, N.A. *Analecta Praehistorica Leidensia* 26:163-181.
- 1999 Taino Expansion towards the Lesser Antilles. The case of Saba. *Journal de la Société des Américanistes* 85:93-113.
- 2013 From Corpse Taphonomy to Mortuary Behavior in the Caribbean: A Case Study from the Lesser Antilles. In *The Oxford Handbook of Caribbean Archaeology*, edited by W. F. Keegan, C. L. Hofman, and R. Rodríguez Ramos, pp. 452-469. Oxford University Press, New York.

- Hoogland, M. L. P., C. L. Hofman, and R. G. A. M. Panhuysen
 2010 Interisland Dynamics. Evidence for Human Mobility at the Site of Anse à la Gourde, Guadeloupe. In *Island shores, distant pasts. Archaeological and biological approaches to the pre-Columbian settlement of the Caribbean*, edited by A. H. Ross and S. M. Fitzpatrick, pp. 148-162. University press of Florida, Gainesville.
- Hooton, E. A.
 1940 Skeletons from the Cenote of Sacrifice at Chichen Itzá. In *The Maya and their Neighbors*, edited by C. L. Hay, pp. 272-280. Appleton-Century, New York.
- Hoover, K. R. (editor)
 2004 *The future of identity: centennial reflections on the legacy of Erik Erikson*. Lexington Books, Lanham.
- Hoover, K. R., and L. K. Ericksen
 2004 Introduction: The future of identity. In *The future of identity: Centennial reflections on the legacy of Erik Erikson*, edited by K. R. Hoover, pp. 1-14. Lexington Books, Lanham.
- Horowitz, D. L.
 1975 Ethnic Identity. In *Ethnicity. Theory and Experience*, edited by N. Glazier and D. P. Moynihan, pp. 111-140. Harvard University Press, Cambridge.
- Hoshower, L. M., J. E. Buikstra, P. S. Goldstein, and A. D. Webster
 1995 Artificial Cranial deformation at the Omo M10 Site: A Tiwanaku Complex from the Moquegua Valley, Peru. *Latin American Antiquity* 6(2):145-164.
- Houston, S., D. Stuart, and K. Taube
 2006 *The Memory of Bones: Body, Being, and Experience among the Classic Maya*. University of Texas Press, Austin.
- Hrdlička, A.
 1919 Anthropometry. *American Journal of Physical Anthropology* 2:43-60.
 1920 *Anthropometry*. The Wistar Institute of Anatomy and Biology, Philadelphia.
- Hughes, D. R.
 1968 Skeletal Plasticity and its Relevance in the Study of Earlier Populations. In *The Skeletal Biology of Earlier Human Populations*, edited by D. R. Brothwell, pp. 31-55. Pergamon, Oxford.
- Hulme, P., and N. L. Whitehead (Editors)
 1992 *Wild Majesty: Encounters with Caribs from Columbus to the Present Day: an Anthology*. Oxford University Press, USA.

Hutchinson, J., and A. D. Smith

1996 Introduction. In *Ethnicity*, edited by J. Hutchinson and A. D. Smith, pp. 3-16. Oxford Readers, Oxford University Press, Oxford.

Identity

Oxford Online Dictionaries. Retrieved from <http://www.oxforddictionaries.com/definition/english/identity>. Accessed July 3, 2015.

Im Thurn, E. F.

1967 *Among the Indians of Guiana, Being Sketches Chiefly Anthropologic from the Interior of British Guiana*. Dover Publications, New York.

Imbelloni, J.

1930 Die Arten der künstlichen Schädeldeformation. (Zusammenfassender Bericht). *Anthropos* 5/6:801-830.

1950 Cephalic Deformations of the Indians in Argentina. In *Handbook of South American Indians, Vol. 6*, edited by J. H. Steward, pp. 53-55. Government Printing Office, Washington D.C.

Insoll, T. (Editor)

2007 *The Archaeology of Identities: a Reader*. Routledge, London.

Iordanidis, P.

1961 Sex determination by the skeletal bones (atlas, axis, clavicle, scapula, sternum). *Annales de médecine légale, criminologie, police scientifique et toxicologie* 41:280-291.

Isaacs, H. R.

1975 *Idols of the Tribe. Group Identity and Political Change*. Harper & Row, New York.

Işcan, M. Y., and S. R. Loth

1986a Determination of age from the sternal rib in white females: a test of the phase method. *Journal of Forensic Science* 31(3):990-999.

1986b Determination of age from the sternal rib in white males: a test of the phase method. *Journal of Forensic Science* 31(1):122-132.

Jahn, A., Jr.

1903 *Bericht über meine Ausgrabungen im nördlichen Venezuela*. Unpublished report held in the Archiv der Ethnologischen Museums in Berlin, Nr. ASI II AB Jahn.

1932 Los cráneos deformados de los aborígenes de los valles de aragua. Observaciones antropológicas. *Boletín de Sociedad Venezolana de Ciencias Naturales* 8:295-308.

Jane, J. A., Jr., Kant Y. Lin, and J. A. Jane, Sr.

2000 Sagittal Synostosis. *Neurosurgical Focus* 9(3):E3, 2000.

- Jantz, R. L., and S. D. Ousley
 2005 *FORDISC 3: Computerised Forensic Discriminant Functions*. Version 3.
 University of Tennessee, Knoxville.
- Jenkins, R.
 1992 *Pierre Bourdieu*. Routledge, London.
 1997 *Rethinking Ethnicity. Arguments and Explorations*. Sage, London.
 2000 Categorization: Identity, Social Process and Epistemology. *Current Sociology*
 48(3):7-25.
 2008 *Rethinking Ethnicity*. 2nd ed. Sage, Thousand Oaks, Ca.
 2014 *Social Identity*. 4th ed. Routledge, New York.
- Jit, I., and S. Singh
 1966 Sexing of the Adult Clavicles. *Indian Journal of Medical Research* 54:551-571.
- Jones, S
 1997 *The Archaeology of Ethnicity: Constructing Identities in the Past and Present*.
 Routledge, London.
 2007 Discourses of identity in the interpretation of the past. In *The Archaeology of
 Identities, a reader*, edited by T. Insoll, pp 44-58. Routledge, London
- Joyce, R. A.
 2000 Girling the girl and boyng the boy: the production of adulthood in ancient
 Mesoamerica. *World Archaeology* 31(3):473-483.
 2004 Embodied subjectivity: gender, femininity, masculinity, sexuality. In *A
 Companion to Social Archaeology*, edited by L. Meskell and R. W. Preucel, pp. 82-
 95. Blackwell, Oxford.
 2005 Archaeology of the Body. *Annual Review of Anthropology* 34:139-58.
- Karsten, R.
 1964 *Studies in the Religion of the South-American Indians East of the Andes*. Edited
 by A. Runeberg and M. Webster. Commentationes Humanarum Litterarum
 Tomus XXIX nr 1. Helsingfors, Helsinki.
- Katz, D., and J. M. Suchey
 1986 Age determination of the male os pubis. *American Journal of Physical
 Anthropology* 69(4):427-435.
- Keegan W. F.
 1982 Lucayan cave burials from the Bahamas. *Journal of New World Archaeology*
 5:57-65.
 1989 Creating the Guanahatabey (Ciboney): The modern genesis of an extinct
 culture. *Antiquity* 63(239):373-379.
 2000 The Caribbean, Including Northern South America and Lowland Central
 America: Early History. *The Cambridge World History of Food* 2:1260-1278.

Keegan W. F. (continued)

2004 Islands of chaos. In *Late Ceramic Age Societies in the Eastern Caribbean*, edited by A. Delpuech and C. L. Hofman, pp. 33-46. BAR International Series 1273. Archaeopress, Oxford.

2007 *Taino Indian myth and practice: the arrival of the Stranger King*. University Press of Florida, Gainesville.

2009 Central plaza burials in Saladoid Puerto Rico: An alternative perspective. *Latin American Antiquity* 20(2):375-385.

2013 The "Classic" Taíno. In *The Oxford Handbook of Caribbean Archaeology*, edited by W. F. Keegan, C. L. Hofman, and R. Rodríguez Ramos, pp. 70-83. Oxford University Press, Oxford.

Keegan, W. F., and L.-G. Atkinson

2006 The development of Jamaican Prehistory. In *The Earliest Inhabitants: the Dynamics of the Jamaican Taino*, edited by Lesley-Gail Atkinson, pp. 13-29. University of the West Indies Press, Jamaica.

Keegan, W. F., and C. L. Hofman

2017 *The Caribbean before Columbus*. Oxford University Press, Oxford.

Keegan, W. F., C. L. Hofman, and R. Rodríguez Ramos

2013 Introduction. In *The Oxford Handbook of Caribbean Archaeology*, edited by W. F. Keegan, C. L. Hofman, and R. Rodríguez Ramos, pp. 1-18. Oxford University Press, Oxford.

Keegan, W. F., and M. D. MacLachlan.

1989 The evolution of avunculocal chiefdoms: a reconstruction of Taino kinship and politics. *American Anthropologist* 91(3):613-630.

Kerns, V.

1977 *Daughters Bring In: ceremonial and social organization of the Black Carib of Belize*. Ph.D. Dissertation, University of Illinois. University Microfilms, Ann Arbor.

1983 *Women and the ancestors: Black Carib kinship and ritual*. University of Illinois Press, Urbana.

Khudabux, M. R.

1991 Physical Anthropological Investigations of Pre-Columbian Skeletal Remains from the "Tingi Holo Ridge" in Suriname (S.A.). *Proceedings of the 13th Congress of the International Association for Caribbean Archaeology, Curaçao, 1989*:813-831.

Khudabux, M. R., G. J. R. Maat, and A. H. Versteeg

1991 The remains of prehistoric Amerindians of the "Tingi Holo Ridge" in Suriname. A physical anthropological investigation of the "Versteeg Collection". *Proceedings of the 12th Congress of the International Association for Caribbean Archaeology, French Guiana, 1987*:135-151.

- Kidder, A.
1944 *Archaeology of Northwestern Venezuela*. Papers of the Peabody Museum of American Archaeology and Ethnology, Harvard University, Vol. XXVI- no.1. The Museum, Cambridge.
- Kiple, K. F., and K. C. Ornelas
1996 After the encounter: Disease and Demographics in the Lesser Antilles. In *The Lesser Antilles in the Age of European Expansion*, edited by R. L. Paquette and S. L. Engerman, pp. 50-70. University of Florida Press, Gainesville.
- Kirchhoff, P.
1948 The Tribes North of the Orinoco River. In *Handbook of South American Indians*, Vol. 4, edited by J. H. Steward, pp 481-494. Bureau of American Ethnology Bulletin 143. Government Printing Office, Washington D.C.
- Kloos, P.
1971 *The Maroni River Caribs of Surinam*. Ph.D. dissertation, Universiteit van Amsterdam. Van Gorcum, Assen.
- Koeze, G. A.
1904 Schädel von Curaçao und Aruba. Beiträge zur Anthropologie, Ethnographie un Archaeologie Niederl. Westindiens. *Mitt. Niederl. Reichsmus. Volkerk. Veroff.* 2(9):18-22.
- Kohn, L. A. P., S. R. Leigh, S. C. Jacobs, and J. M. Cheverud
1993 Effects of Annular Cranial Vault Modification on the Cranial Base and Face. *American Journal of Physical Anthropology* 90:147-168.
- Kohn, L. A. P., S. R. Leigh, and J. M. Cheverud
1995 Asymmetric vault modification in Hopi crania. *American Journal of Physical Anthropology* 98(2):173-195.
- Konig, C.
1814 On a Fossil Human Skeleton from Guadaloupe. *Philosophical Transactions of the Royal Society of London* 104:107-120.
- Konigsberg, L. W., L. A. Kohn, and J. M. Cheverud
1993 Cranial Deformation and Nonmetric Trait Variation. *American Journal of Physical Anthropology* 90(1):35-48.
- Knapp, M. L., and J. A. Hall
2002 *Nonverbal Communication in Human Interaction*. Thomson Learning, Crawfordsville.

- Knauft, B. M.
1990 Melanesian Warfare: a Theoretical History. *Oceania* 60(4):250-311.
- Knippenberg, S.
2006 *Stone artefact production and exchange among the Lesser Antilles*.
Archaeological Studies Leiden University 13. Leiden University Press, Leiden.
- Knudson, K. J., and C. M. Stojanowski
2009 *Bioarchaeology and Identity in the Americas*. University Press of Florida,
Gainesville.
- Krieger, H. W.
1930 The aborigines of the ancient island of Hispaniola. *Annual Report Smithsonian institution 1929*. US Government Printing Office, Washington, D.C.
1932 *Culture Sequences in Haiti*. Smithsonian Institution, Washington, D.C.
1937 The Bahama Islands and their Prehistoric Population. *Explorations and Field Work of the Smithsonian Institution in 1936*, pp. 93-8. Smithsonian Institution, Washington, D.C.
- Kuzminsky, S. C., and M. S. Gardiner
2012 Three-dimensional Laser Scanning: Potential uses for Museum Conservation and Scientific Research. *Journal of Archaeological Science* 39:2744-2751.
- Labat, J.-B.
1742 *Nouveau voyage aux isles de l'Amerique : contenant l'histoire naturelle de ees pays, l'origine, les moeurs, la religion & le gouvernement des habitans anciens & modernes : les guerres & les evenemens singuliers qui y sont arrivez pendant le long sejour que l'auteur y a fait : le commerce et les manufactures qui y sont etablies, & les moyens de les augmenter : ouvrage enrichi d'un grand nombre de cartes, plans, & figures en taille-douce*. T. Le Gras, Paris.
- Laffoon, J. E.
2012 *Patterns of Paleomobility in the Ancient Antilles: an Isotopic Approach*. Ph.D. dissertation, Faculty of Archaeology, Leiden University.
2013 Paleomobility Research in Caribbean Contexts: New Perspectives from Isotope Analysis. In *The Oxford Handbook of Caribbean Archaeology*, edited by W. F. Keegan, C. L. Hofman, and R. Rodríguez Ramos, pp. 126-140. Oxford University Press, Oxford.
- Laffoon, J. E., and M. L. P. Hoogland
2012 Migration and mobility in the circum-Caribbean: integrating archaeology and isotopic analysis. In *Population dynamics in prehistory and early history: new approaches using stable isotopes and genetics*, edited by E. Kaiser, J. Burger, and W. Schier, pp. 337-353. Walter de Gruyter, Berlin.

- Laffoon, J. E., R. Valcárcel Rojas, and C. L. Hofman.
2013 Oxygen and carbon isotope analysis of human dental enamel from the Caribbean: implications for investigating individual origins. *Archaeometry* 55(4):742-765.
- Laffoon, J. E., R. Rodríguez Ramos, L. Chanlatte Baik, Y. Narganes Storde, M. Rodríguez Lopez, G. R. Davies, and C. L. Hofman
2014 Long-distance exchange in the precolonial Circum-Caribbean: A multi-isotope study of animal tooth pendants from Puerto Rico. *Journal of Anthropological Archaeology* 35:220-233.
- Laible, D., and R. A. Thompson
2007 Early Socialization: A Relationship Perspective. In *Handbook of socialization: theory and research*, edited by J. E. Grusec and P. D. Hastings, pp 181-207. Guilford Press, New York.
- Leblond, J.-B.
1813 *Voyage aux Antilles et a l'Amérique Méridionale*. A. Bertrand, Paris.
- Lekovic, G. P., B. J. Baker, J. M. Lekovic, and M. C. Preul
2007 New World cranial deformation practices: historical implications for pathophysiology of cognitive impairment in deformational plagiocephaly. *Neurosurgery* 60(6):1137-1147.
- Lenik, S.
2012 Carib as a colonial category: Comparing ethnohistoric and archaeological evidence from Dominica, West Indies. *Ethnohistory* 59(1):79-107.
- Lewis, M., W. Clark, P. Allen, and A. MacVickar
1843 *History of the expedition under the command of Captains Lewis and Clarke [sic], to the sources of the Missouri, thence across the Rocky Mountains, and down the River Columbia to the Pacific Ocean performed during the years 1804, 1805, 1806, by order of the government of the United States*. Harper and Bros, New York.
- Lieberman, D. E., O. M. Pearson, and K. M. Mowbray
2000 Basicranial influence on overall cranial shape. *Journal of Human Evolution* 38:291-315.
- Littlefield, T. R., R. M. Hess, K. M. Kelly, and J. K. Pomatto
2005 Cranial Remodelling: From Cultural Practice to Contemporary Treatment of Cranial Deformities. *Biometrie Humaine et Anthropologie* 23:43-52.
- Llenas, A.
1891 *Decouverte d'un Crane d'Indien Ciguayo a Saint-Domingue*. Nantes.

- Lockwood, W. G.
 1981 Religion and Language as Criteria of Ethnic Identity: An Exploratory Comparison. In *Ethnicity and Nationalism in Southeastern Europe*, edited by S. Beck and J. W. Cole, pp. 71-82. Papers on European and Mediterranean Societies No 14, Universiteit van Amsterdam. R. Stolk, the Netherlands.
- Logan, M. H., C. S. Sparks, and R. L. Jantz
 2003 Cranial Modification Among 19th Century Osages: Admixture and Loss of an Ethnic Marker. *The Plains Anthropologist* 48(187):209-224.
- Lovén, S.
 1935 *Origins of Taino Culture*. West Indies, Göteborg.
- Lovejoy, C. O., R. S. Meindl, T. R. Pryzbeck, and R. P. Mensforth
 1985 Chronological metamorphosis of the auricular surface of the ilium: a new method for the determination of adult skeletal age at death. *American Journal of Physical Anthropology* 68(1):15-28.
- Lucy, S.
 2005 Ethnic and Cultural Identities. In *The Archaeology of Identity, Approaches to Gender, Age, Status, Ethnicity and Religion*, edited by M. Díaz-Andreu, S. Lucy, S. Babić, and D. N. Edwards, pp. 86-109. Routledge, London.
- Luna Calderón, F.
 1976 Preliminary Report on the Indian Cemetery "El Atajadizo", Dominican Republic. *Proceedings of the 6th Congress of the International Association for Caribbean Archaeology, Guadeloupe, 1975*:295-303.
 1977 Enterramientos Humanos y Patologías de Cueva de Berna. In *Arqueología de Cueva de Berna*, edited by M. Veloz Maggiolo, E. Ortega, J. Nadal, F. Luna Calderón, and R. O. Rímoli, pp. 27-32. Universidad Central del Este, Serie Científica V. San Pedro de Macoris.
 1980 Estudio Antropológico del Osario de Escalera Abajo. *Boletín del Museo del Hombre Dominicano* 13:193-205.
 1982 Antropología y Paleontología de Cueva María Sosa, Boca del Yuma, Provincia de la Altagracia. *Boletín del Museo del Hombre Dominicano* 17:149-167.
 1985 Antropología y Paleopatología de los Pobladores del Soco. *Proceedings of the 10th Congress of the International Association for Caribbean Archaeology, Martinique, 1983*:286-294.
 1986 Antropología física de los aborígenes a la llegada de colon. *Hoy* 120:20-22.
- Maat, G. J. R.
 1985 Skeletal remains excavated at Peruvia-2 and Wageningen-1 in the Republic of Suriname (A physical-anthropological record). In *The Prehistory of the Young Coastal Plain of West Suriname*, A. H. Versteeg, pp. 123-131. Ph.D. dissertation, Leiden University, Leiden.

- MacCormack, R. C.
1898 Indian remains in Vere, Jamaica. *Journal of the Institute of Jamaica* 2:744-748.
- McDonald, J. H.
2014 *Handbook of Biological Statistics*. 3rd ed. Sparky House Publishing, Baltimore.
- MacEachern, A. S.
1998 Scale, style, and cultural variation: Technological traditions in the Northern Mandara mountains. In *The Archaeology of Social Boundaries*, edited by M. Stark, pp. 107–131. Smithsonian Institution Press, Washington, D.C.
- McGuire, R. H.
1982 The study of ethnicity in historical archaeology. *Journal of Anthropological Archaeology* 1(2):159-178.
- Mañón Arredondo, M., F. Morbán Lauder, and A. Cartagan Portalatín
1971 Nuevas investigaciones de areas indigenas al noreste de Guayacanes y Juan Dolio. *Revista Dominicana de la Arqueología y Antropología* 1:81-113.
- Manríquez, G., F.E. González-Bergás, J.C. Salinas, and O. Espouey
2006 Deformación intencional del cráneo en poblaciones arqueológicas de arica, chile: análisis preliminar de morfometría geométrica con uso de radiografías craneofaciales. *Chungara Revista de Antropología Chilena* 38(1):13-34.
- Marcano, G.
1888 Station précolombienne des vallées d'Aragua (république du Venezuela). *Bulletins de la Société d'anthropologie de Paris* 3(11):225-234.
1889 *Ethnographie précolombienne du Venezuela, vallées d'Aragua et de Caracas*. Typ. A. Hennuyer, Paris.
- Martin, D. L., R. P. Harrod, and V. R. Pérez
2013 *Bioarchaeology: an integrated approach to working with human remains*. Springer, New York.
- Martin, R.
1928 *Lehrbuch der Anthropologie in systematischer Darstellung mit besonderer Berücksichtigung der anthropologischen Methoden ; für Studierende, Ärzte und Forschungsreisende*. 2nd ed. Gustav Fischer, Jena.
- Martínez-Cruzado, J. C., G. Toro-Labrador, J. Viera-Vera, M. Y. Rivera-Vega, J. Startek, M. Latorre-Esteves, and A. Román-Colón
2005 Reconstructing the population history of Puerto Rico by means of mtDNA phylogeographic analysis. *American Journal of Physical Anthropology* 128(1):131-155.

- Martinón-Torres, M., R. Valcárcel Rojas, J. Cooper, and T. Rehren
2007 Metals, microanalysis and meaning: a study of metal objects excavated from the indigenous cemetery of El Chorro de Maíta, Cuba. *Journal of Archaeological Science* 34(2):194-204.
- Mason, O. T.
1889 Cradles of the American aborigines. *Annual Report 1887* 23:161-212.
- Mathews, T.
1965 The Caribbean Kaleidoscope. *Current History* 48:32-39.
- Mauss, M.
1973 [1936] Techniques of the body. Translated by B. Brewster. *Economy and Society* 2(1):70-88.
- Mays, S., and M. Cox
2000 Sex Determination in Skeletal Remains. In *Human osteology: in archaeology and forensic science*, edited by Margaret Cox and Simon Mays, pp. 117-130. Cambridge University Press, Cambridge.
- Meares, J.
1790 *Voyages made in the years 1788 and 1789, from China to the North West Coast of America. To which are prefixed, an introductory narrative of a voyage performed in 1786, from Bengal, in the Ship Nootka; observations on the probable existence of a North West Passage; and Some Account of the Trade Between the North West Coast of America and China; and the Latter Country and Great Britain.* Logographic Press, London.
- Meindl, R. S., and C. O. Lovejoy
1985 Ectocranial suture closure: A revised method for the determination of skeletal age at death based on the lateral-anterior sutures. *American Journal of Physical Anthropology* 68(1):57-66.
- Méndez Bonilla, I. F.
2006 *Culturas Indígenas de Puerto Rico*. Museo de Historia, Antropología y Arte, Universidad de Puerto Rico, San Juan.
- Mendonça de Souza, S. M. F., K. J. Reinhard, and A. Lessa
2008 Cranial Deformation as the cause of death for a child from the Chillón river valley, Peru. *Chungara Revista de Antropología Chilena* 40(1):41-53.
- Meskill, L.
2007 Archaeologies of Identity. In *The Archaeology of Identities. A Reader*, edited by T. Insoll, pp. 23-43. Routledge, London.

- Mickleburgh, H. L.
 2013 *Reading the dental record: a dental anthropological approach to foodways, health and disease, and crafting in the pre-Columbian Caribbean*. Ph.D. dissertation, Leiden University, Leiden.
- Mol, A. A. A.
 2007 *Costly Giving, Giving Guaizas: Towards an Organic Model of the Exchange of Social Valuables in the Late Ceramic Age Caribbean*. Sidestone Press, Leiden.
 2014 *The Connected Caribbean: a socio-material network approach to patterns of homogeneity and diversity in the pre-colonial period*. Sidestone Press, Leiden.
- Mooney, M. P., and M. I. Siegel
 2002 *Understanding craniofacial anomalies: the etiopathogenesis of craniosynostoses and facial clefting*. Wiley-Liss, New York.
- Moore, H. L.
 1994 *A Passion for Difference. Essays in Anthropology and Gender*. Polity Press, Cambridge.
- Moore-Jansen, P. H., and R.L. Jantz
 1990 *Data collection procedures for forensic skeletal material*. Forensic Anthropology Center, Department of Anthropology, University of Tennessee.
- Morbán Laucer, F.
 1979 *Ritos funerarios : Acción del fuego y medio ambiente en las osamentas precolombinas*. Edit. Taller, Santo Domingo.
- Morbán Laucer, F., B. García Olivo, and R. Kasse Acta
 1976 Paleomedicina: Deformacion Y Trepanacion Craneana entre los aborígenes Americanos y sus posibles implicaciones psico-patológicas. In *Proceedings of the Primer Congreso Dominicanode Psiquiatria*, edited by E. Guillén Matarranz, pp. 299-315. Editora Taller, Santo Domingo.
- Moreau, J.-P.
 1990 *Un flibustier français dans la mer des Antilles 1618-1620*. Seghers, Paris.
- Moreno-Estrada, A., S. Gravel, F. Zakharia, J. L. McCauley, J. K. Byrnes, C. R. Gignoux, and P. A. Ortiz-Tello
 2013 Reconstructing the population genetic history of the Caribbean. *PLoS Genet* 9(11):e1003925.
- Morriss-Kay, G. M., and A. O. M. Wilkie
 2005 Growth of the Normal Skull Vault and Its Alteration in Craniosynostosis: Insights from Human Genetics and Experimental Studies. *Journal of Anatomy* 207(5):637-53.

- Moss, M. L.
1958 The Pathogenesis of Artificial Cranial Deformation. *American Journal of Physical Anthropology* 16:269-286.
- Moss, M. L., and R. W. Young
1960 A functional approach to craniology. *American Journal of Physical Anthropology* 18(4):281-292.
- Morton, S. G., and G. Combe
1839 *Crania americana, or, A comparative view of the skulls of various aboriginal nations of North and South America to which is prefixed an essay on the varieties of the human species ; illustrated by seventy-eight plates and a colored map.* J. Dobson, Philadelphia.
- Narganes Storde, Y. M.
1991 Secuencia cronologica de dos sitios arqueologicos de Puerto Rico (Sorco, Vieques y Tecla, Guyanilla). *Proceedings of the 13th International Congress for Caribbean Archaeology, Curaçao*, 1989:628-646.
2007 Nueva cronología de varios sitios de Puerto Rico y Vieques. *Proceedings of the 21st International Association of Caribbean Archaeology, Trinidad and Tobago*, 2005:275-281.
- Nash, M.
1996 The Core Elements of Identity. In *Ethnicity*, edited by J. Hutchinson and A. D. Smith, pp. 24-27. Oxford University Press, Oxford and New York.
- Neumann, G. K.
1942 Types of Artificial Cranial Deformation in the Eastern United States. *American Antiquity* 7(3):306-310.
- Nillson Stutz, L. and S. Tarlow
2013 Beautiful Things and Bones of Desire: Emerging Issues in the Archaeology of Death and Burial. In *The Oxford Handbook of the Archaeology of Death and Burial*, edited by S. Tarlow and L. Nillson Stutz, pp. 1-14. Oxford University Press, Oxford.
- O'Brien, T. G., and A. M. Stanley
2013 Boards and Cords: Discriminating Types of Artificial Cranial Deformation in Prehispanic South central Andean Populations. *International Journal of Osteoarchaeology* 23(4):459-470.
- O'Loughlin, V. D.
2004 Effects of Different Kinds of Cranial Deformation on the Incidence of Wormian Bones. *American Journal of Physical Anthropology* 123:146-155.

- Oetteking, B.
 1930 *Craniology of the North Pacific Coast*. The Jesup North Pacific Expedition
 Memoir of the American Museum of Natural History, New York, Volume XI, Part
 1. E.J. Brill, Leiden.
- Oliver, J. R.
 1999 The 'La Hueca problem' in Puerto Rico and the Caribbean: old problems, new
 perspectives, possible solutions. In *Archaeological investigations on St. Martin
 (Lesser Antilles). The sites of Norman Estate, Hope Estate and Anse des Pères. With
 a contribution to the 'La Hueca problem'*, pp. 253-298. Leiden University Press,
 Leiden.
 2009 *Caciques and Cemi idols: the web spun by Taino rulers between Hispaniola and
 Puerto Rico*. University of Alabama Press, Tuscaloosa.
- Osgood, C., and G. D. Howard
 1943 *An archaeological Survey of Venezuela*. Yale University Publications in
 Anthropology No. 27. Yale University Press, New Haven.
- Ossenberg, N. S.
 1970 The Influence of Artificial Cranial Deformation on Discontinuous
 Morphological Traits. *American Journal of Physical Anthropology* 33:357-372.
- Ortega, E. J.
 2002 *Artefactos en Concha. Arqueología en Coral Costa Caribe, Juan Dolio, R.D.*
 Publicaciones de la Fundación Ortega Álvarez, Inc., Vol. IX, Santo Domingo.
 2005 *Compendio General Arqueológico de Santo Domingo*. Academia de Ciencias de
 la República Dominicana, Santo Domingo.
- Ortner, S. B.
 2006 *Anthropology and Social Theory. Culture, Power, and the Acting Subject*. Duke
 University Press, Durham and London.
- de Oviedo y Valdés, G. F.
 1851 [1535] *Historia general y natural de las Indias, islas y Tierra Firme del Mar
 Oceano*. Real Academia de la Historia, Madrid.
- Pagán-Jiménez, J. R.
 2013 Human-Plant Dynamics in the Precolonial Antilles: A Synthetic Update. In *The
 Oxford Handbook of Caribbean Archaeology*, edited by W. F. Keegan, C. L. Hofman,
 and R. Rodríguez Ramos, pp. 391-406. Oxford University Press, Oxford.
- Pagán Jiménez, J. R., M. Rodríguez, L. A. Chanlatte Baik, and Y. Narganes Storde
 2005 La temprana introducción y uso de algunas plantas domésticas, silvestres
 y cultivos en Las Antillas precolombinas. Una primera revaloración desde la
 perspectiva del "arcaico" de Vieques y Puerto Rico. *Diálogo Antropológico* 3(10):
 7-33.

- Pagán-Jiménez, J. R., R. Rodríguez Ramos, and J. R. Oliver
2014 Ancient cultures: Maize is not a clue to Puerto Rican origins. *Nature* 510(7506):473.
- Paquette, R. L. and S. L. Engerman (editors)
1996 *The Lesser Antilles in the Age of European Expansion*. University of Florida Press, Gainesville.
- Patterson, T. C.
1991 Early Colonial Encounters and Identities in the Caribbean: A review of some recent works and their implications. *Dialectical Anthropology* 16(1):1-13.
- Pearson, K., and J. Bell
1917–1919 *A study of the long bones of the English skeleton. I: the femur*. Cambridge University Press, London.
- Petersen, J. B., C. L. Hofman, and L. A. Curet
2004 Time and Culture: Chronology and Taxonomy in the Eastern Caribbean and the Guianas. In *Late Ceramic Age Societies in the Eastern Caribbean*, edited by A. Delpuech and C. L. Hofman, pp. 17-32. BAR International Series 1273. Archaeopress, Oxford.
- Pestle, W. J.
2010 *Diet and Society in Prehistoric Puerto Rico. An Isotopic Approach*. Unpublished Ph.D. Dissertation, University of Illinois, Chicago.
- Pestle, W. J., L. A. Curet, R. Rodríguez Ramos, and M. Rodríguez López
2013 New Questions and Old Paradigms: Reexamining Caribbean Culture History. *Latin American Antiquity* 24(3):243-261.
- Phenice, T. W.
1969 A Newly Developed Visual Method of Sexing the Os Pubis. *American Journal of Physical Anthropology* 30(2):297-301.
- Phillips V. M., and N. A. Smuts
1996 Facial Reconstruction: Utilization of Computerized Tomography to measure Facial Tissue Thickness in a Mixed Racial Population. *Forensic Science International* 83:51-59.
- Pina Peña, P.
1972 Las Deformaciones Intencionales del cuerpo Humano en las Antillas. *Boletín del Museo del Hombre Dominicano* 1:9-19.
- Poey, F.
1865 *Repertorio fisico-natural de la isla de Cuba*. 2 vols. Havana.

- Poole, A. J.
1930 Explorations in Haitian Caves. *Explorations and Field Work of the Smithsonian Institution in 1929*:63-76.
- Posnansky, A.
1924 Über Trepanieren und künstliche Verunstaltungen an Aymaraschädeln. *Zeitschrift für Ethnologie* 56(5/6):158-169.
- Rainey, F. G.
1940 *Porto Rican Archaeology*. New York Academy of Sciences, New York.
- Rainey, F. G., and I. Rouse
1941 *Excavations in the Ft. Liberté region, Haiti*. Yale University Press, New Haven.
- Requena, A.
1946 Figuración en alfarería antropomorfa precolombina venezolana de aparatos de deformación craneana artificial e intentional. *Acta Venezolana* II(1-4):24-35.
- Rhine, S.
1990 Non-metric skull racing. In *Skeletal attribution of race*, edited G. W. Gill and S. Rhine, pp. 9-20. Anthropological Papers No. 4. Maxwell Museum of Anthropology, Albuquerque.
- Rhode, M. P., and B. T. Arriaza
2006 Influence of cranial deformation on facial morphology among prehistoric South Central Andean populations. *American Journal of Physical Anthropology* 130(4):462-470.
- Ricci, F., C. Fornai, V. Tiesler Blos, O. Rickards, S. Di Lernia, and G. Manzi
2008 Evidence of Artificial Cranial Deformation from the Later Prehistory of the Acacus Mts. (Southwestern Libya, Central Sahara). *International Journal of Osteoarchaeology* 18:372-391.
- Ridgway, E. B., and H. L. Weiner
2004 Skull Deformities. *Pediatric Clinics of North America* 51:359-387.
- Righter, E.
2002 *The Tutu archaeological village site: a multidisciplinary case study in human adaptation*. Routledge, London.
- Rivera-Collazo, I.
2011 Palaeoecology and human occupation during the Mid-Holocene in Puerto Rico: the case of Angostura. In *Communities in Contact: Essays in archaeology, ethnohistory & ethnography of the Amerindian circum-Caribbean*, edited by C. L. Hofman and A. van Duijvenbode, pp. 407-420. Sidestone Press, Leiden.

- Rivero de la Calle, M.
 1960 Deformación Craneana en los Aborígenes de Cuba. Estudio Comparativo. *VII Congrès International des Sciences Anthropologiques et ethnologiques. Paris, 30 juillet – 6 août 1960*. Tome 1:252-260. Paris.
 1966 *Las Culturas Aborígenes de Cuba*. Editor Universitaria, Habana, Cuba.
- Roberts, O.
 1827 *Narrative of Voyages and Excursions on the East Coast and in the Interior of Central America*. Constable, Edinburgh.
- Robinson, S., and M. Proctor
 2009 Diagnosis and Management of Deformational Plagiocephaly: a Review. *Journal of Neurosurgery: Pediatrics* 3:284-295.
- Rochefort, C. de
 1667 *Histoire naturelle et morale des les Antilles de l'Amerique*. R. Leers, Rotterdam.
- Rodríguez López, M.
 1991 Arquelogia de Punta Candeleiro, Puerto Rico. *Proceedings of the 13th Congress of the International Association for Caribbean Archaeology, Curaçao*, 1989:605-627.
 1995 Los Bateyes de Trujillo Alto: Un Nueco Centro Ceremonial Indígena en Puerto Rico. *Proceedings of the 15th Congress of the International Association for Caribbean Archaeology, Puerto Rico*, 1993:27-42.
- Rodríguez Ramos, R.
 2008 From the Guanahatabey to the Archaic of Puerto Rico: The nonevident evidence. *Ethnohistory* 55(3):393-415.
 2010 *Rethinking Puerto Rican Precolonial History*. University of Alabama Press, Tuscaloosa.
 2011 The circulation of jadeitite across the Caribbeanscape. In *Communities in Contact: Essays in archaeology, ethnohistory and ethnography of the Amerindian circum-Caribbean*, edited by C. L. Hofman and A. van Duijvenbode, pp. 117-136. Sidestone Publishers, Leiden.
- Rodríguez Ramos, R., E. Babilonia, L. Antonio Curet, and J. Ulloa Hung
 2008 The Pre-Arawak Pottery Horizon in the Antilles: a New Approximation. *Latin American Antiquity* 19(1):47-63.
- Rodríguez Ramos, R., J. R. Pagán-Jiménez, and C. L. Hofman
 2013 The Humanization of the Insular Caribbean. In *The Oxford Handbook of Caribbean Archaeology*, edited by W. F. Keegan, C. L. Hofman, and R. Rodríguez Ramos, pp. 126-140. Oxford University Press, Oxford.

- Roe, P. G.
 1985 A Preliminary Report on the 1980 and 1982 Field Seasons at Hacienda Grande (12 PSJ-7): Overview of Site History, Mapping and Excavations. In *Proceedings of the tenth International Congress for the Study of the Pre-Columbian Cultures of the Lesser Antilles*: 151-180. Centre de Recherches Caraïbes Université de Montreal.
- Roe, P. G., and M. H. Hayward
 2008 Rocks of Ages: Petroglyphs, Pictographs, and Identity in Puerto Rico. In *Archaeologies of Art: Time, Place, Identity*, edited by I. Domingo Sanz, D. Fiore, and S. K. May, pp. 51-78. Left Coast Press, Walnut Creek, California.
- Roe, P. G., A. G. Pantel, and M. B. Hamilton
 1990 "Montserrat Restudied" the 1978 Centro Field Season at Luquillo Beach: Excavation Overview. *Proceedings of the 11th Congress of the International Association for Caribbean Archaeology, Puerto Rico*, 1985:338-369.
- Rogers, S. L.
 1975 *Artificial Deformation of the Head: New World Examples of Ethnic Mutilation and Notes on its Consequences*. San Diego Museum Papers number 8. Museum of Man, California.
- Roksandic, M., K. Alarie, R. Rodríguez Suárez, E. Huebner, and I. Roksandic
 2016 Not of African Descent: Dental Modification among Indigenous Caribbean People from Canimar Abajo, Cuba. *PLoS ONE* 11(4): e0153536.
- Roosens, E. E.
 1989 *Creating Ethnicity. The process of Ethnogenesis*. Sage Publications, Newbury Park.
- Ross, A. H., and D. H. Ubelaker
 2009 Effect of Intentional Cranial Modification on Craniofacial Landmarks: A three-dimensional perspective. *Journal of Craniofacial Surgery* 20(6):2185-2187.
- Ross, A. H., and S. E. Williams
 2010 Craniofacial Growth, Maturation, and Change: Teens to Midadulthood. *Journal of Craniofacial Surgery* 21(2):458-461.
- Rostain, S.
 2008 The archaeology of the Guianas: an overview. In *The Handbook of South American Archaeology*, edited by H. Silverman and W. Isbell, pp. 279-302. Springer, New York.
- Rostain, S., and A. H. Versteeg
 2004 The Arauquinoid tradition in the Guianas. In *Late Ceramic Age Societies in the Eastern Caribbean*, edited by A. Delpuech and C. L. Hofman, pp. 233-250. BAR International Series 1273. Archaeopress, Oxford.

Roth, W. E.

1924 *An Introductory Study of the Arts, Crafts, and Customs of the Guiana Indians*.
Thirty-eighth Annual Report of the Bureau of American Ethnology to the
Secretary of the Smithsonian Institution 1916-1917. Government Printing Office,
Washington D.C.

Rouse, I.

1941 *Culture of the Ft. Liberté region, Haiti*. Yale University Press, New Haven.
1942 *Archeology of the Maniabón hills, Cuba*. Yale University Press, New Haven.
1948 The Arawak. In *Handbook of South American Indians, Vol. 4*, edited by J.
H. Steward, pp 507-546. Bureau of American Ethnology Bulletin 143. US
Government Printing Office, Washington D.C.
1952 *Porto Rican Prehistory: Excavations in the Interior, South and East: Chronological
Implications*. The Academy, New York.
1961 Archaeology in Lowland South America and the Caribbean, 1935-60. *American
Antiquity* 27(1):56-62.
1964 Prehistory of the West Indies. *Science* 144(3618):499-513.
1990 Social, linguistic, and stylistic plurality in the West Indies. *Proceedings of the
11th Congress of the International Association for Caribbean Archaeology, Puerto
Rico*, 1990:56-63.
1992 *The Tainos. Rise and Decline of the People who Greeted Columbus*. Yale
University Press, New Haven.

Rouse, I., and R. E. Alegría

1990 *Excavations at Maria de la Cruz Cave and Hacienda Grande Village Site, Loiza,
Puerto Rico*. Yale University Publications in Anthropology, no. 80. Yale University,
New Haven.

Rouse, I., and J. M. Cruxent

1963 *Venezuelan Archaeology*. Yale University Press, New Haven and London.

Sala, G.

1897 *Apuntes de Viage del R.P.F.R.G. Sala exploración de los ríos Pichis, Pachitea y Alto
Ucayali y de la región de El Gran Pajonal*. Lima.

Samson, A. V. M.

2010 *Renewing the House: Trajectories of Social Life in the Yucayeque (community) of
El Cabo, Higüey, Dominican Republic, AD 800 to 1504*. Sidestone Press, Leiden.

Samson, A. V. M., and B. M. Waller

2010 Not Growling but Smiling: New Interpretations of the Bared-Teeth Motif in the
Pre-Columbian Caribbean. *Current Anthropology* 51(3):425-433.

- Sanchez-Lara, P. A., J. M. Graham Jr, A. V. Hing, J. Lee, and M. Cunningham
2007 The morphogenesis of Wormian Bones: a Study of Craniosynostosis and Purposeful Cranial Deformation. *American Journal of Medical Genetics part A* 143A:3243-3251.
- Sanoja Obediente, M., and I. Vargas Arenas
1987 La Sociedad Cacical del Valle de Quíbor (Estado Lara, Venezuela). In *Chiefdoms in the Americas*, edited by R. D. Drennan and C. A. Uribe, pp. 201-121. University Press of America, New York.
- Santos, A. L., P. Allsworth-Jones, and E. Rodriques
2002 Pathological evidence in the Pre-Columbian human remains from the Lee Collection (Jamaica). *Antropologia Portuguesa* 19:121-138.
- Santos, A. L., M. T. Gardner, and P. Allsworth-Jones
2013 Treponematosi in Pre-Columbian Jamaica: a biocultural approach to the human cranium found in Bull Savannah. *Journal of Archaeological Science* 40(1):490-496.
- Sargent, C., and G. Bascope
1996 Ways of Knowing about Birth in Three Cultures. *Medical Anthropology Quarterly NS* 10:213-236.
- Sarnäs, K. V., and B. Solow
1980 Early adult changes in the skeletal and soft-tissue profile. *The European Journal of Orthodontics* 2(1):1-12.
- Sauer, N. J.
1998 The timing of injuries and manner of death: distinguishing among antemortem, perimortem and postmortem trauma. In *Forensic osteology: advances in the identification of human remains*, edited by K. J. Reichs, pp. 321-332. Charles C. Thomas, Springfield, Illinois.
- Saunders, S. R., and D. L. Rainey
2008 Nonmetric Trait Variation in the Skeleton: Abnormalities, Anomalies, and Atavisms. *Biological Anthropology of the Human Skeleton*, 2nd ed., edited by M. A. Katzenberg and S. R. Saunders, pp. 533-559. John Wiley & Sons, Hoboken, New Jersey.
- Schaefer, M., S. M. Black, and L. Scheuer
2009 *Juvenile Osteology: a Laboratory and Field Manual*. Elsevier, Academic Press, London.

- Schaffer, W. C., R. S. Carr, J. S. Day, and M. P. Pateman
2012 Lucayan-Taino burials from Preacher's cave, Eleuthera, Bahamas.
International Journal of Osteoarchaeology 22(1):45-69.
- Schendel, S. A., G. Walker, and A. Kamisugi
1980 Hawaiian Craniofacial Morphometrics: Average Mokapuan Skull, Artificial Cranial Deformation, and the "rocker" Mandible. *American Journal of Physical Anthropology* 52(4):491-500.
- Scheuer, L.
2002 Application of Osteology to Forensic Medicine. *Clinical Anatomy* 15(4):297-312.
- Scheuer, L., and S. M. Black
2000 *Developmental Juvenile Osteology*. Academic Press, San Diego.
2004 *The Juvenile Skeleton*. Elsevier Academic Press, London.
- Schijman, E.
2005 Artificial Cranial Deformation in Newborns in the Pre-Columbian Andes.
Child's Nervous System 21:945-950.
- Schroeder, H., M. C. Ávila-Arcos, A.-S. Malaspinas, G. D. Poznik, M. Sandoval-Velasco, M. L. Carpenter, and J. V. Moreno-Mayar
2015 Genome-wide ancestry of 17th-century enslaved Africans from the Caribbean.
Proceedings of the National Academy of Sciences 112(12):3669-3673.
- Scouler, J.
1829 Remarks on the form of the Skull of the North American Indians. *The Zoological Journal* 4:304-308.
- Sewell, W. H., Jr.
1992 A theory of structure: Duality, agency, and transformation. *American Journal of Sociology* 98(1):1-29.
- Shephard, C.
1831 *An historical account of the island of Saint Vincent*. W. Nicol, London.
- Shilling, C.
2003 *The Body and Social Theory*. 2nd ed. Sage Publications, London.
- Siegel, P. E.
1996 Ideology and culture change in prehistoric Puerto Rico: A view from the community. *Journal of Field Archaeology* 23(3):313-333.
2004 What Happened after AD 600 in Puerto Rico? Corporate groups, population restructuring, and post-Saladoid social changes. In *Late Ceramic Age Societies in the Eastern Caribbean*, edited by A. Delpuech and C. L. Hofman, pp. 87-100. BAR International Series 1273. Archaeopress, Oxford.

- Siegel, P. E. (continued)
2010 Continuity and change in the evolution of religion and political organization on pre-Columbian Puerto Rico. *Journal of Anthropological Archaeology* 29(3):302-326.
- Siegel, P. E., and E. Righter
2011 *Protecting Heritage in the Caribbean*. University of Alabama Press, Tuscaloosa.
- Slate, R., J. Posnick, D. Armstrong, and J. Buncic
1993 Cervical Spine Subluxation Associated with Congenital Muscular Torticollis and Craniofacial Asymmetry. *Plastic & Reconstructive Surgery* 91(7):1187-1195.
- Smith, B. H.
1991 Standards of human tooth formation and dental age assessment. In *Advances in Dental Anthropology*, edited by M. A. Kelley and C. S. Larsen, pp. 143-168. Wiley-Liss, New York.
- Smithsonian Institution
1938 *Annual Report of the Board of Regents of the Smithsonian Institution showing the operations, expenditures, and condition of the institution for the year ended June 30 1937*. United States Government Printing Office, Washington, D.C.
1948 *Annual Report of the Board of Regents of the Smithsonian Institution showing the operations, expenditures, and condition of the institution for the year ended June 30 1947*. United States Government Printing Office, Washington, D.C.
- Smithsonian Institution Archives
2014 Carlos de la Torre y La Huerta (1858-1950). http://siarchives.si.edu/collections/siris_arc_296726. Accessed on 05-03-2014.
- Sofaer, J. R.
2006 *The Body as Material Culture: a Theoretical Osteoarchaeology*. Cambridge University Press, Cambridge.
- Sokal, R. R., and F.J. Rohlf
2012 *Descriptive statistics. Biometry, the principles and practice of statistics in biological research*. 4th ed. Freeman and Co, New York.
- Sokolovskii, S., and V. Tishkov
2002 Ethnicity. In *Encyclopedia of Social and Cultural Anthropology*, edited by A. Barnard, and J. Spencer, pp. 190-192. Routledge, London.
- Sørensen, M. L. S.
1997 Reading Dress: the Construction of Social Categories and Identities in Bronze Age Europe. *Journal of European Archaeology* 5(1):93-114.

- Soto-Heim, P.
2004 Une marque d'identité imprimée sur l'os: La déformation crânienne intentionnelle. *Biométrie humaine et anthropologie* 22(1-2):81-98.
- Stedman, J. G.
1813 *Narrative of a five years' expedition against the revolted Negroes of Surinam in Guiana, on the wild coast of South America, from the year 1772 to 1777 elucidating the history of that country, and describing its productions, viz. quadrupedes, birds, fishes [sic], reptiles, trees, shrubs, fruits and roots: with an account of the Indians of Guiana, and Negroes of Guinea.* J. Johnson & T. Payne, London.
- Steenbakker, M. C.
2014 *A Maya Burial in Cuba. A study on the origins of individual CM 72B buried at El Chorro de Maíta, Cuba.* Unpublished Bachelor Thesis, Faculty of Archaeology, Leiden University.
- Steward, T. D.
1397 Different types of cranial deformity in the Pueblo area. *American Anthropologist* 39(1):169-171.
1939 A new type of artificial cranial deformation from Florida. *J Wash Acad Sci* 29:460-465.
1950 Deformity, trephining, and mutilation in South American Indian skeletal remains. In *Handbook of South American Indians*, Vol. 6, edited by J. H. Steward, pp 43-48. Bureau of American Ethnology Bulletin 143. Government Printing Office, Washington D.C.
1976 Are supra-inion depressions evidence of prophylactic trephination? *Bulletin of the History of Medicine* 50(3):414.
1979 *Essentials of forensic anthropology: especially as developed in the United States.* Charles C. Thomas, Springfield.
- Stewart, T. D., and M. T. Newman
1950 Anthropometry of South American Indian Skeletal Remains. In *Handbook of South American Indians*, Vol. 6, edited by J. H. Steward, pp 19-41. Bureau of American Ethnology Bulletin 143. Government Printing Office, Washington D.C.
- Stodder, A. L.
2005 The bioarchaeology and taphonomy of mortuary ritual on the Sepik Coast, Papua New Guinea. In *Interacting with the dead: Perspectives on mortuary archaeology for the new millennium*, edited by G. F. M. Rakita, J. E. Buikstra, L. A. Beck, and S. R. Williams, pp. 228-250. University Press of Florida, Gainesville.
- Sumner, T. A., and A. T. R. Riddle
2009 Remote anthropology: reconciling research priorities with digital data sharing. *Journal of Anthropological Sciences* 89:1e3.

- Sundick, R. I.
1978 Human skeletal growth and age determination. *Homo Gottingen* 29(4):228-249.
- Tabío, E. Y. Rey, and E. Rey
1966 *Prehistoria de Cuba*. Academia de Ciencias de Cuba, Havana, Cuba.
- Tacoma, J.
1959 *Indian Skeletal Remains from Aruba. Studies on the Physical Anthropology of the Netherlands Antilles:I-II*. Uitgaven van de Natuurwetenschappelijke werkgroep Nederlandse Antillen, Curaçao.
1963 *American Indians from Suriname, a Physical Anthropological study*. Ph.D. dissertation, University of Utrecht, Utrecht.
1980 *Kunstmatige Schedeldeformatie in Aruba. Studies on the Physical Anthropology of the Netherlands Antilles: III-IV*. Uitgaven van de Natuurwetenschappelijke Studiekring voor Suriname en de Nederlandse Antillen no 105. Natuurhistorische reeks no 2.
1987 Skeletal Remains from de Savaan region, Curacao. In *Collected Papers on Netherlands Antilles archaeology presented to the 11th international congress for Caribbean archaeology at San Juan, Puerto Rico July – August 1985*. Report of the Institute of Archaeology and Anthropology of the Netherlands Antilles no. 4.
1991 The Tingiholo Collection: Material and Methods. In *On 'Amazonidi': Precolumbian Skeletal Remains and Associated Archaeology from Suriname*, edited by J. Tacoma, D. C. Geijskes, G. J. R. Maat, and G. N. van Vark, pp. 49-53. Publications Foundation for Scientific Research in the Caribbean Region, Amsterdam.
- Tacoma, J., and G. N. van Vark
1991 Dating and Discussion. In *On 'Amazonidi' Precolumbian Skeletal Remains and Associated Archaeology from Suriname*, edited by J. Tacoma, D. C. Geijskes, G. J. R. Maat, and G. N. van Vark, pp. 77-88. Publications Foundation for Scientific Research in the Caribbean Region, Amsterdam.
- Tacoma, J., D. C. Geijskes, G. J. R. Maat, and G. N. van Vark (editors)
1991 *On 'Amazonidi': Precolumbian Skeletal Remains and Associated Archaeology from Suriname*. Publications Foundation for Scientific Research in the Caribbean Region, Amsterdam.
- Tavarez Maria, G.
N.D. *Informe de Antropologia Fisica del Cementerio de Macao*. Unpublished internal report, Museo del Hombre Dominicano, Santo Domingo.
- Tavarez Maria, G., and F. Luna Calderón
2007 Estudio de Antropologia Fisica del Cementerio de Macao, Republica Dominicana. *Proceedings of the 21st Congress of the International Association for Caribbean Archaeology, Jamaica*, 2007:692-701.

- Taylor, C.
2012 *The Black Carib Wars. Freedom, Survival, and the making of the Garifuna*. University Press of Mississippi, Jackson.
- Taylor, D. R.
1951 *The Black Carib of British Honduras*. Viking Fund Publications in Anthropology Number Seventeen. Johnson Reprint Cooperation, New York.
- Taylor, D. R., and B. J. Hoff
1980 The Linguistic Repertory of the Island-Carib in the Seventeenth Century: The Men's Language: A Carib Pidgin? *International Journal of American Linguistics* 46(4):301-312.
- Terrell, J. E.
2010 Language and Material Culture on the Sepik Coast of Papua New Guinea: Using social network analysis to simulate, graph, identify, and analyse social and cultural boundaries between communities. *The Journal of Island and Coastal Archaeology* 5(1):3-32.
- Thamara, F.
1556 *Libro delas costumbres de todas las gentes del mundo y de las Indias*. Martin Nunçio, Antwerp.
- Tiesler, V.
1999 Head shaping and dental decoration among the ancient Maya: archaeological and cultural aspects. *Proceedings of the 64th Meeting of the Society of American Archaeology*:24-28.
2010 "Olmec" Head Shapes among the Preclassic Period Maya and Cultural Meanings. *Latin American Antiquity* 21(3):290-311.
2012 *Transformarse en maya: el modelado cefálico entre los mayas prehispánicos y coloniales*. Universidad Nacional Autónoma de México, Instituto de Investigaciones Antropológicas.
2013 *The bioarchaeology of artificial cranial modifications: New approaches to head shaping and its meanings in Pre-Columbian Mesoamerica and beyond*. Springer, New York.
- Tiesler, V., and I. O. Arias
2010 Identity, Alienation, and Integration: Body Modifications in the Early Colonial Population from Campeche. In *Natives, Europeans, and Africans in Colonial Campeche: History and Archaeology*, edited by V. Tiesler, P. Zabala, and A. Cucina, pp. 130-151. University Press of Florida, Gainesville.
- Tocheri, M. W.
2009 Laser scanning: 3D analysis of biological surfaces. In *Advanced Imaging in Biology and Medicine*, edited by C.W. Sensen and B. Hallgrímsson, pp. 85-101. Springer-Verlag, Berlin.

- Todd, T. W.
 1921a Age changes in the pubic bone. *American Journal of Physical Anthropology* 4(1):1-70.
 1921b Age changes in the pubic bone. VI. The interpretation of variations in the symphyseal area. *American Journal of Physical Anthropology* 4(4):407-424.
- Tommaseo, M., and A. Drusini
 1984 Physical Anthropology of Two Tribal Groups in Amazonic Peru (with Reference to Artificial Cranial Deformation). *Zeitschrift für Morphologie und Anthropologie* 74(3):315-333.
- Topinard, P.
 1879 Des déformations ethniques du crâne. *Revue d'Anthropologie* 2:496-506.
- Torgersen, J.
 1951 Hereditary factors in the sutural pattern of the skull. *Acta Radiologica* 36(5):374-382.
- Torres, J. M.
 2012 *The Social Construction of Community, Polity, and Place in Ancient Puerto Rico (AD 600 – AD 1200)*. Ph.D. dissertation, University of Florida, Gainesville.
 2013 Rethinking Chiefdoms in the Caribbean. In *The Oxford Handbook of Caribbean Archaeology*, edited by W. F. Keegan, C. L. Hofman, and R. Rodríguez Ramos, pp. 247-362. Oxford University Press, Oxford.
- Torres-Rouff, C.
 2003 *Shaping identity: cranial vault modification in the pre-Columbian Andes*. Ph.D. dissertation, University of California, Santa Barbara.
 2009 The Bodily Expression of Ethnic Identity: Head Shaping in the Chilean Atacama. In *Bioarchaeology and Identity in the Americas*, edited by K. J. Knudson and C. M. Stojanowski, pp. 212-230. University Press of Florida, Gainesville.
- Torres-Rouff, C., and L. T. Yablonsky
 2005 Cranial Vault Modification as a Cultural Artifact: a Comparison of the Eurasian Steppes and the Andes. *HOMO-Journal of Comparative Human Biology* 56(1):1-16.
- Tosh, J.
 2010 *The Pursuit of History. Aims, Methods and New Directions in the Study of Modern History*. 5th ed. Routledge, London and New York.
- Townsend, J. K.
 1839 *Narrative of a journey across the Rocky Mountains, to the Columbia River, and a visit to the Sandwich Islands, Chili, &c.; with a scientific appendix*. H. Perkins, Philadelphia.

- Tubbs, R. S., A. N. Bosmia, and A. A. Cohen-Gadol
2012 The Human Calvaria: A Review of Embryology, Anatomy, Pathology, and Molecular Development. *Child's Nervous System* 28(1):23–31.
- Tubbs, R. S., E. G. Salter and W. J. Oakes
2006 Artificial Deformation of the Human Skull: A Review. *Clinical Anatomy* 19:372–377.
- Turner, T.
1980 The Social Skin. In *Not Work Alone: A Cross-Cultural View of Activities Superfluous to Survival*, edited by J. Cherfas and R. Lewin, pp. 112-40. Sage, London.
- Turner, B. S.
1991 Recent Developments in the Theory of the Body. In *The Body. Social Process and Cultural Theory*, edited by M. Featherstone, M. Hepworth, and B. S. Turner, pp. 1-35. Sage Publications, London.
- Turner, V. W.
1969 *The Ritual Process: Structure and anti-structure*. Aldine de Gruyter, New York.
- Ubelaker, D. H.
1989 *Human Skeletal Remains: Excavation, Analysis, Interpretation*. 2nd ed. Taraxacum, Washington, D.C.
- Ulloa Hung, J.
2014 *Arqueología en la Línea Noroeste de La Española. Paisajes, cerámicas e interacciones*. Instituto Tecnológico de Santo Domingo: Santo Domingo.
- Ulloa Hung, J., and R. Valcárcel Rojas
2002 *Cerámica Temprana en el Cetro del Oriente de Cuba*. Viewgraph, Santo Domingo.
- Valcárcel Rojas, R.
2002 *Banes precolombino. La Ocupación Agricultura*. Ediciones Holguín, Holguín.
2012 *Interacción colonial en un pueblo de indios encomendados: el Chorro de Maíta, Cuba*. Ph.D. dissertation, Leiden University, Leiden.
- Valcárcel Rojas, R., D. A. Weston, H. L. Mickleburg, J. E. Laffoon, and A. van Duijvenbode
2011 El Chorro de Maíta: A diverse approach to a context of diversity. In *Communities in Contact: Essays in archaeology, ethnohistory and ethnography of the Amerindian circum-Caribbean*, edited by C. L. Hofman and A. van Duijvenbode, pp. 225-252. Sidestone Publishers, Leiden.

- Van Arsdale, A. P., and J. L. Clark
 2012 Re-examining the relationship between cranial deformation and extra-sutural bone formation. *International Journal of Osteoarchaeology* 22(1):119-126.
- Van Baal, J.
 1966 *Dema: description and analysis of Marind-Anim culture (South New Guinea)*. Martinus Nijhoff, the Hague.
- Van den Bel, M., and T. Romon
 2010 A Troumassoid site at Trois-Rivières, Guadeloupe FWI Funerary practices and house patterns at La Pointe de Grande Anse. *Journal of Caribbean Archaeology* 9:1-17.
- Van den Berghe, P. L.
 1981 *The Ethnic Phenomenon*. Elsevier, New York.
- Van Duijvenbode, A.
 2010 *Keeping up an Appearance, A Study of Intentional Cranial Modification among the Indigenous Peoples of the circum-Caribbean*. Unpublished MA Thesis, Leiden University, Leiden.
 2012 A reappraisal of intentional cranial modification among the indigenous inhabitants of Suriname in Prehistoric and Historic times. *Caribbean Connections* 2(1):1-11.
- Van Gennepe, A.
 1909 *Les rites de passage*. Émile Nourry, Paris.
- Van Heekeren, H. R.
 1960 *A survey of the non-ceramic artifacts of Aruba, Curaçao and Bonaire*. Studies on the archaeology of the Netherlands Antilles: II. Natuurwetenschappelijke werkgroep Nederlandse Antillen, Curaçao.
- Veloz Maggiolo, M.
 1972 *Arqueología Prehistórica de Santo Domingo*. McGraw-Hill Far Eastern Publishers, Singapore.
 1993 *La Isla de Santo Domingo antes de Colón*. Banco Central de la República Dominicana, Santo Domingo.
- Veloz Maggiolo, M, I. Vargas, M. Sanoja, and F. Luna Calderon
 1976 *Arqueología de Yuma, República Dominicana*. Santo Domingo.
- Veloz Maggiolo, M, E. Ortega, J. Nadal, F. Luna Calderon, and R. Rimoli
 1977 *Arqueología de Cueva de Berna*. Universidad Central del Este, San Pedro de Macoris.

- Veloz Maggiolo, M., E. Ortega, R. Rimoli, and F. Luna Calderón
1973 Estudio Comparativo y preliminar de los cementerios neoindios: La Cucama y La Unión. *Boletín del Museo del Hombre Dominicano* 3:11-47.
- Verkuyten, M.
2005 *The Social Psychology of Ethnic Identity*. Psychology Press, Hove and New York.
- Verrand, L.
2001 *La vie quotidienne des Indiens caraïbes aux Petites Antilles: XVIIe siècle*. Karthala Editions, Paris.
- Versteeg, A. H.
1985 *The Prehistory of the Young Coastal Plain of West Suriname*. Ph.D. Dissertation, Leiden University, Leiden.
2008 Barrancoid and Arauquinoid Mound Builders in Coastal Suriname. In *The Handbook of South American Archaeology*, edited by H. Silverman and W. H. Isbell, pp.303-318. Springer, New York.
- Versteeg, A.H., J. Tacoma, and P. van de Velde
1990 *Archaeological Investigations on Aruba: the Malmok Cemetery*. Publication of the Archaeological Museum Aruba no 2/Publication of the Foundation for Scientific Research in the Caribbean Region no 126.
- Virchow, R.
1892 *Crania ethnica Americana; Sammlung auserlesener amerikanischer Schädeltypen*. Asher, Berlin.
- Von den Steinen, K.
1904 Ausgrabungen am Valenciasee. *Globus* 86(77):101-8.
- Voss, B. L.
2008 *The Archaeology of Ethnogenesis: Race and Sexuality in Colonial San Francisco*. University of California Press, Berkeley.
- Waal, M. S.
2006 *Pre-Columbian Social Organisation and Interaction Interpreted through the Study Of Settlement Patterns. An Archaeological Case-Study of the Pointe des Chateaux, La Désirade and les Îles de la Petite Terre Micro-Region, Guadeloupe, French West Indies*. Ph.D. Dissertation, Leiden University, Leiden.
- Waldron, T.
1987 The relative survival of the human skeleton: implications for palaeopathology. In *Death, Decay and Reconstruction: Approaches to Archaeology and Forensic Science*, edited by A. Boddington, A.N. Garland, and R.C. Janaway, pp. 55-64. Manchester University Press, Manchester.

- Waldron, T. (continued)
 2001 *Shadows in the Soil: Human Bones and Archaeology*. Tempus, Stroud, Gloucestershire.
 2009 *Palaeopathology*. Cambridge University Press, Cambridge.
- Walker, J. B.
 1985 A preliminary report on the lithic and osteological remains from the 1980, 1981, and 1982 field seasons at Hacienda Grande (12PSJ7-5). *Proceedings of the Tenth International Congress for the Study of Pre-Columbian Cultures of the Lesser Antilles*:181-224.
- Walker, P.
 2000 Bioarchaeological Ethics: a historical perspective on the value of human remains. In *Biological Anthropology of the Human Skeleton*, edited by M. A. Katzenberg and S. R. Saunders, pp. 3–39. Wiley-Liss, New York.
- Weiss, P.
 1932 Restos Humanos de Cerro Colorado. *Revista del Museo Nacional* 1(2):90–102.
 1958 *Osteología Cultural. Prácticas cefálicas, Primera Parte: Cabeza Trofeo, Trepanaciones, Cauterizaciones*. Universidad Nacional Mayor de San Marcos, Lima.
- Wells, C.
 1964 *Bones, Bodies and Disease. Evidence of Disease and Abnormality in Early Man*. Thames and Hudson, London.
- Wells, P. S.
 2001 *Beyond Celts, Germans and Scythians: Archaeology and Identity in Iron Age Europe*. Duckworth, London.
 2012 *How Ancient Europeans Saw the World: Vision, Patterns, and the Shaping of the Mind in Prehistoric Times*. Princeton University Press, Princeton and Oxford.
- Wesler, K. W.
 2013 Jamaica. In *The Oxford Handbook of Caribbean Archaeology*, edited by W. F. Keegan, C. L. Hofman, and R. Rodríguez Ramos, pp. 250-263. Oxford University Press, Oxford.
- Weston, D. A.
 2010 *Human Skeletal Report: Kelbey's Ridge 2 and Spring Bay 1c, Saba*. Unpublished report, Leiden University, Leiden.
 2011 *Human Skeletal Report : Anse à la Gourde, Guadeloupe*. Unpublished report, Leiden University, Leiden.
 2012 *Human Skeletal Report : El Chorro de la Maíta, Cuba*. Unpublished report, Leiden University, Leiden.
 2013 *Human Skeletal Report: Manzanilla (SAN-1), Trinidad*. Unpublished report, Leiden University, Leiden.

- Weston, D. A., and R. Schats
2010 *Human Skeletal Report: Maisabel, Puerto Rico*. Unpublished report, Leiden University, Leiden.
- Weston, D. A., and R. Valcárcel Rojas.
2016 Communities in contact: health and paleodemography at El Chorro de Maíta, Cuba. In *Cuban Archaeology in the Circum-Caribbean Context*, edited by I. Roksandic, pp. 83-105. University Press of Florida, Gainesville.
- Wetmore, A.
1932 Birds collected in Cuba and Haiti by the Parish-Smithsonian Expedition of 1930. *Proceedings of the United States National Museum* 81:1-40.
- White, C. D.
1996 Sutural effects of fronto-occipital cranial modification. *American Journal of Physical Anthropology* 100(3):397-410.
- White, T., and P. Folkens
1991 *Human Osteology*. Academic Press, London.
2005 *The Human Bone Manual*. Academic Press, London.
- Whitehead, N. L., (editor)
1995 *Wolves from the Sea: Readings in the Anthropology of the Native Caribbean*. Caribbean Series, Vol. 14. KITLV Press, Leiden.
- Wilczak, C. A., and S. D. Ousley
2009 Test of the relationship between sutural ossicles and cultural cranial deformation: results from Hawikuh, New Mexico. *American Journal of Physical Anthropology* 139(4):483-493.
- Wilkinson, C.
2004 *Forensic Facial Reconstruction*. Cambridge University Press, Cambridge.
2010 Facial reconstruction – anatomical art or artistic anatomy? *Journal of Anatomy* 216:235-250.
- Williams, J. S., and C. D. White.
2006 Dental modification in the Postclassic population from Lamanai, Belize. *Ancient Mesoamerica* 17(01):139-151.
- Wilson, S. M.
2007 *The Archaeology of the Caribbean*. Cambridge University Press, Cambridge.
- Winter, J.
1991 A Multiple Lucayan Burial from New Providence, Bahamas. *Proceedings of the 12th Congress of the International Association for Caribbean Archaeology, French Guiana*, 1987:153-161.

- Winter, J., A. Figueredo, S. Fisher, and E. Quatela
1991 Late Saladoid Burials from St. Croix. *Proceedings of the 13th Congress of the International Association for Caribbean Archaeology, Curaçao*, 1989:874-881.
- Wolf, E. R.
1994 Perilous Ideas: Race, Culture, and People. *Current Anthropology* 35(1):1-12.
- Wood, J. W., G. R. Milner, H. C. Harpending, K. M. Weiss, M. N. Cohen, L. E. Eisenberg, and D. L. Hutchinson
1992 The Osteological Paradox: problems of inferring prehistoric health from skeletal samples [and comments and reply]. *Current Anthropology* 33(4):343-370.
- Wyman, H. C.
1881-1882 Artificial deformity of the skull and unsoundness of the mind. *Detroit Lancet* 5:428-430.
- Young, W.
1971 [1795] *An Account of the Black Charaibs in the Islands of St. Vincent's with the Charaib Treaty of 1773 and other original documents*. Frank Cass, London.
- Zamakona de Arechavaleta, G., and H. Langrange de Catillo
2007 Craneología Indígena de Venezuela. Cráneos No Deformados y Deformados. La Pica, Estado Aragua, Venezuela. *Revista de la Sociedad Venezolana de Historia de la Medicina* 56(1-2):70-84.
- Zebrowitz, L. A., and J. M. Montepare.
2008 Social psychological face perception: Why appearance matters. *Social and Personality Psychology Compass* 2(3):1497-1517.

ICM Recording Form

Fetus/Infant

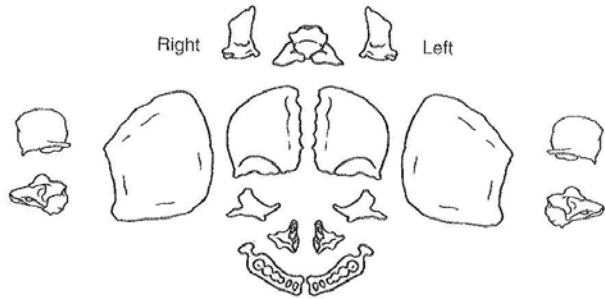
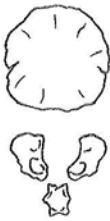
Site Observer
Feature Number Date
Burial/Find Number Location
Additional Information

Cranial Inventory

Preservation poor / moderate / good / excellent

Reconstruction yes / no

Manner of reconstruction:



Indicate missing areas

General Information

Burial Position
Grave Goods
Period
Palaeopathology Present / Absent / Unknown
Type of Pathology:

Remarks

Site:

Burial:

Age Determination

Element	Open/Partially Fused/Fused	Age

Fetus (<40 weeks)

Infant (0-3 years)

Child (3-12 years)

Cranial Modification

Modification present yes / no / possibly

Intentional yes / no / Undetermined

Type of Modification Fronto – Occipital / Circumferential /
Frontal flattening / Occipital flattening

Other:

Subtype Parallel / Vertical / Undetermined

Degree Slight / Moderate / Marked

Asymmetry Present / Absent

Direction:

Photographs yes / no

Photo Numbers

Remarks



Outline of Skull

ICM Recording Form

Child

Site

Observer

Feature Number

Date

Burial/Find Number

Location

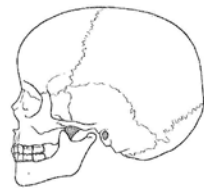
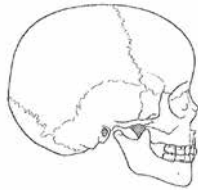
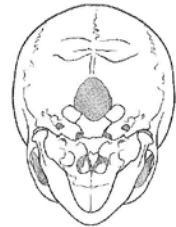
Additional Information

Cranial Inventory

Preservation poor / moderate / good / excellent

Reconstruction yes / no

Manner of reconstruction:



Indicate missing areas

General Information

Burial Position

Grave Goods

Period

Palaeopathology Present / Absent / Unknown

Type of Pathology:

Remarks

Site:

Burial:

Age Determination

Element	Open/Partially Fused/Fused	Age

Fetus (<40 weeks)

Infant (0-3 years)

Child (3-12 years)

Cranial Modification

Modification present yes / no / possibly

Intentional yes / no / Undetermined

Type of Modification Fronto – Occipital / Circumferential /
Frontal flattening / Occipital flattening

Other:

Subtype Parallel / Vertical / Undetermined

Degree Slight / Moderate / Marked

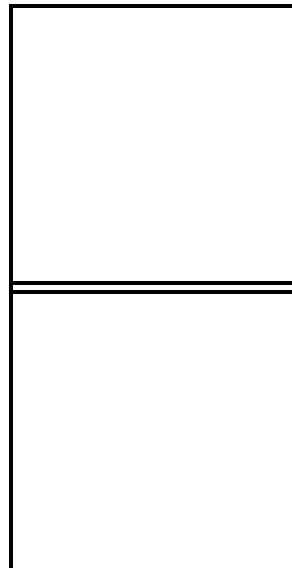
Asymmetry Present / Absent

Direction:

Photographs yes / no

Photo Numbers

Remarks



Outline of Skull

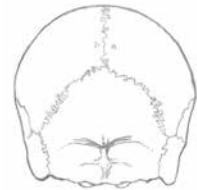
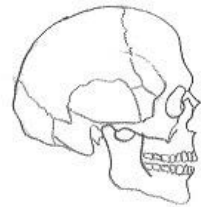
ICM Recording Form
Adolescent and Adult

Site
Feature Number
Burial/Find Number
Additional Information

Observer
Date
Location

Cranial Inventory

Preservation poor / moderate / good / excellent
Reconstruction yes / no
Manner:



Indicate missing areas

General Information

Burial Position
Grave Goods
Period
Palaeopathology Present / Absent / Unknown
Remarks



Site:

Burial:

Sex Determination

Pelvic Traits	Score
Ventral Arc	
Subpubic Concavity	
Ischiopubic Ramus Ridge	
Greater Sciatic Notch	
Preauricular Sulcus	

Cranial Traits	Score
Nuchal Crest	
Mastoid Process	
Supraorbital Margin	
Prominence of Glabella	
Mental Eminence	

Estimated Sex:

Age Determination

Adolescent (12-18 years)

Adult (18+ years)

Based on:

Site:

Burial:

Metrics

Cranial measurements (mm)	Measurements
1. Maximum Cranial Length (G – Op)	
2. Maximum Cranial Breath (Eu – Eu)	
3. Bizygomatic Diameter (Zy – Zy)	
4. Basion – Bregma Heigth (Ba – B)	
5. Cranial Base Length	
6. Basion – Prosthion Length	
7. Maxillo – Alveolar Breath	
8. Maxillo - Alveolar Length	
9. Biauricular Breath	
10. Upper Facial Heigth	
11. Minimum Frontal Breath	
12. Upper Facial Breath	
13. Nasal Heigth	
14. Nasal Breath	
15. Orbital Breath*	
16. Orbital height*	
17. Biorbital Breath	
18. Interorbital Breath	
19. frontal Chord	
20. parietal Chord	
21. Occipital Chord	
22. Foramen Magnum Length	
23. Foramen Magnum Breath	
24. Mastoid Length*	

* Bilateral Measurement: always on the left side. If substituted for right side, indicate with (R)

Cranial Indices	Value	Category
Cranial Index		
Cranial Length-Height Index		
Cranial Breath-Heigth Index		
Mean Heigth Index		
Fronto-Parietal Index		
Upper Facial Index		
Nasal Index		
Orbital Index		
Maxilloalveolar Index		

Site:

Burial:

Non Metrics

Trait		Score		Comments
Metopic Suture				
Supraorbital notch	Number	L	R	
	Position	L	R	
	Size	L	R	
	Shape	L	R	
Supraorbital foramen	Number	L	R	
	Position	L	R	
	Size	L	R	
Infraorbital Suture		L	R	
Accessory Infraorbital Foramina		L	R	
Zygomatico-facial Foramina	Number	L	R	
	Position	L	R	
	Size	L	R	
Parietal Foramen	Number	L	R	
	Position	L	R	
	Size	L	R	
Inca Bone				
Condylar Canal	Number	L	R	
	Size	L	R	
Divided Hypoglossal Canal		L	R	
Flexure of Superior Sagittal Sulcus				
Foramen Ovale Incomplete		L	R	
Foramen Spinosum Incomplete		L	R	
Pterygo-spinous Bridge		L	R	
Pterygo-alar bridge		L	R	
Tympanic Dihiscence/ Huschke		L	R	
Auditory Exostosis		L	R	
Mastoid Foramen	Number	L	R	
	Position	L	R	
	Size	L	R	

Trait		Score		Comments
Mental Foramen	Number			
	Size			
	Type of Division			
Mandibular Torus		L	R	
Mylohyoid Bridge	Location	L	R	

Site:

Burial:

Trait		Score		Comments
		L	R	
Epipteric ossicle	Number	L	R	
	Position	L	R	
	Size	L	R	
Coronal ossicle	Number	L	R	
	Position	L	R	
	Size	L	R	
Bregmatic ossicle	Number	L	R	
	Position	L	R	
	Size	L	R	
Sagittal ossicle	Number	L	R	
	Position	L	R	
	Size	L	R	
Apical ossicle	Number	L	R	
	Position	L	R	
	Size	L	R	
Lambdoid Ossicle	Number	L	R	
	Position	L	R	
	Size	L	R	
Asterionic Ossicle	Number	L	R	
	Position	L	R	
	Size	L	R	
Occipito Mastoid WB	Number	L	R	
	Position	L	R	
	Size	L	R	
Parietal Notch Bone	Number	L	R	
	Position	L	R	
	Size	L	R	