



Universiteit
Leiden
The Netherlands

Clavis Aurea? Structure-enabled approaches of identifying and optimizing GPCR ligands

Lenselink, E.B.

Citation

Lenselink, E. B. (2017, June 7). *Clavis Aurea? Structure-enabled approaches of identifying and optimizing GPCR ligands*. Retrieved from <https://hdl.handle.net/1887/49402>

Version: Not Applicable (or Unknown)

License: [Licence agreement concerning inclusion of doctoral thesis in the Institutional Repository of the University of Leiden](#)

Downloaded from: <https://hdl.handle.net/1887/49402>

Note: To cite this publication please use the final published version (if applicable).

Cover Page



Universiteit Leiden



The handle <http://hdl.handle.net/1887/49402> holds various files of this Leiden University dissertation.

Author: Lenselink, E.B.

Title: Clavis Aurea? Structure-enabled approaches of identifying and optimizing GPCR ligands

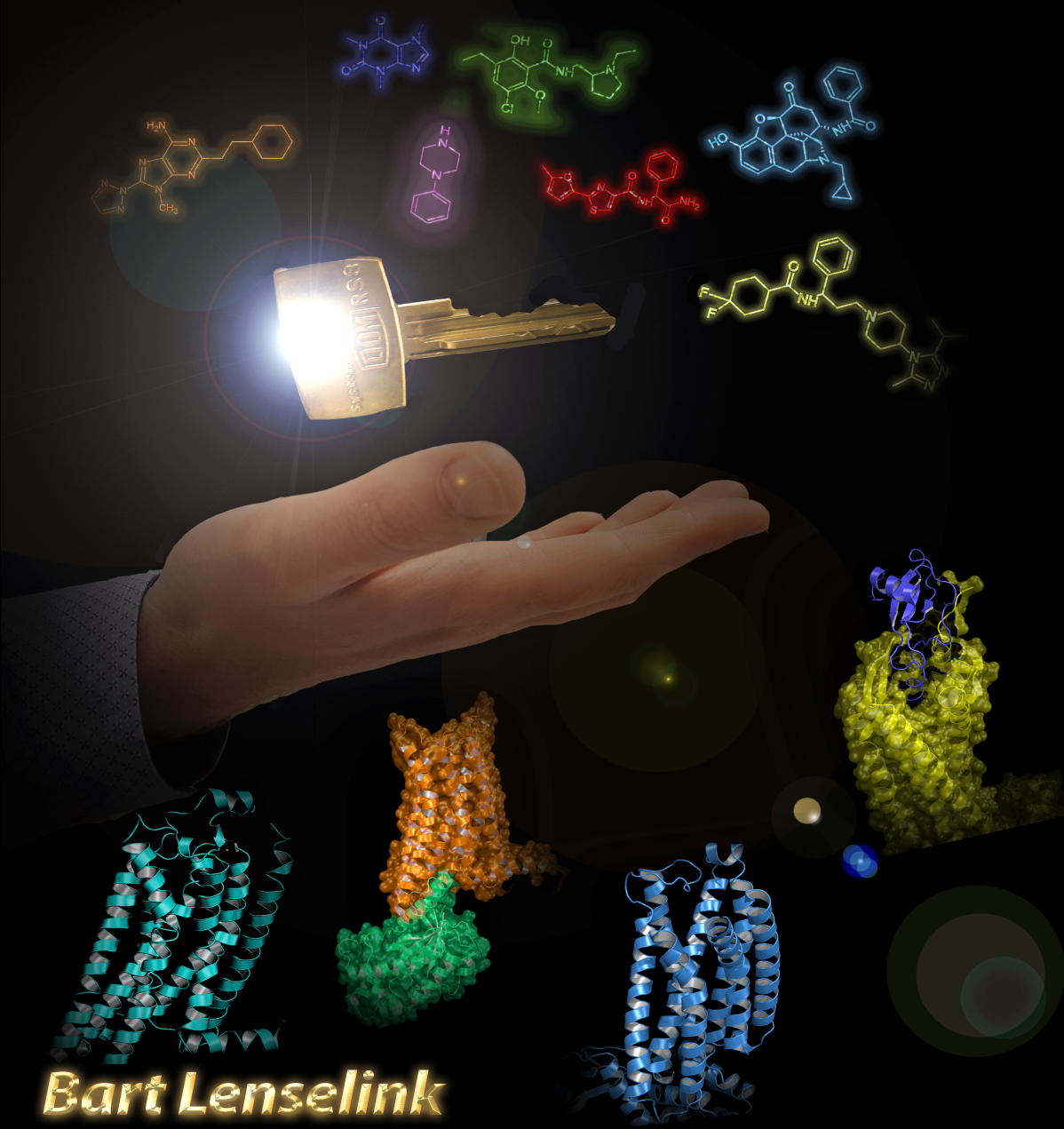
Issue Date: 2017-06-07



Bart LenseLink

“Clavis aurea?” Structure-enabled approaches of identifying and optimizing GPCR ligands

Clavis aurea?



Bart LenseLink

Structure-enabled approaches of identifying and optimizing GPCR ligands