



Universiteit  
Leiden



African Studies Centre Leiden

# African Postal Heritage

APH Paper Nr 16

Ton Dietz

ZULULAND

Version January 2017

## Introduction

Postage stamps and related objects are miniature communication tools, and they tell a story about cultural and political identities and about artistic forms of identity expressions. They are part of the world's material heritage, and part of history. Ever more of this postal heritage becomes available online, published by stamp collectors' organizations, auction houses, commercial stamp shops, online catalogues, and individual collectors. Virtually collecting postage stamps and postal history has recently become a possibility. These working papers about Africa are examples of what can be done. But they are work-in-progress! Everyone who would like to contribute, by sending corrections, additions, and new area studies can do so by sending an email message to the APH editor: Ton Dietz ([dietzaj@asc.leidenuniv.nl](mailto:dietzaj@asc.leidenuniv.nl)). You are welcome!

Disclaimer: illustrations and some texts are copied from internet sources that are publicly available. All sources have been mentioned. If there are claims about the copy rights of these sources, please send an email to [asc@asc.leidenuniv.nl](mailto:asc@asc.leidenuniv.nl), and, if requested, those illustrations will be removed from the next version of the working paper concerned.

African Studies Centre Leiden  
P.O. Box 9555  
2300 RB Leiden  
The Netherlands

Telephone	+31-71-5273372
E-mail	asc@asc.leidenuniv.nl
Website	<a href="http://www.ascleiden.nl">http://www.ascleiden.nl</a>
Facebook	<a href="http://www.facebook.nl/ascleiden">www.facebook.nl/ascleiden</a>
Twitter	<a href="http://www.twitter.com/ascleiden">www.twitter.com/ascleiden</a>
Countryportal	<a href="http://countryportal.ascleiden.nl">http://countryportal.ascleiden.nl</a>

Illustrations cover page:

ASC Leiden postage stamp Nederland (2011): ©African Studies Centre Leiden

Cape of Good Hope postage stamp 1853:

[http://upload.wikimedia.org/wikipedia/commons/thumb/7/7c/Cape\\_Triangular\\_Postage\\_Stamp.jpg/400px-Cape\\_Triangular\\_Postage\\_Stamp.jpg](http://upload.wikimedia.org/wikipedia/commons/thumb/7/7c/Cape_Triangular_Postage_Stamp.jpg/400px-Cape_Triangular_Postage_Stamp.jpg)

Egypt postage stamp 1914:

[https://upload.wikimedia.org/wikipedia/commons/4/4b/Post\\_Stamp\\_Egypt.jpg](https://upload.wikimedia.org/wikipedia/commons/4/4b/Post_Stamp_Egypt.jpg)

## Table of Contents

Introduction	4
Postal history prior to 1888	5
Postage stamps of Zululand (1888 onwards)	8
Revenue stamps of Zululand	30
Post offices in Zululand	33
Annex 1: Zulu Kings after 1913	75
South African (and other) stamps with Zulu images	78

## SOUTH AFRICA

# Postal history and postage and revenue stamps of Zululand

### Introduction

“The [Zulu Kingdom](#) was defeated by Britain in the [Anglo-Zulu War](#) and was annexed as a British territory in 1887. For a brief period, it operated its own postal system and had its own postage stamps....A Natal postal agency was established in Eshowe in 1876 (closed between 1879 and 1885),[1] but an official postal system was not started until 1 May 1888, at which time both Zululand and neighbo[u]ring Natal became members of the Universal Postal Union. At first, the territory used postage stamps of Great Britain and Natal overprinted "ZULULAND". A series of ten definitive issues in the key plate style with a profile of Queen Victoria, inscribed "ZULULAND" appeared in 1894 and were in use at 21 post offices. These stamps ranged in denomination from 1/2 penny to five pounds. Zululand was annexed by Natal on 31 December 1897, and separate stamps were discontinued on 30 June 1898.”

[https://en.wikipedia.org/wiki/Postage\\_stamps\\_and\\_postal\\_history\\_of\\_Zululand](https://en.wikipedia.org/wiki/Postage_stamps_and_postal_history_of_Zululand)



<http://www.dcstamps.com/wp-content/uploads/2011/03/SAF-Boer-Wars-Map.jpg>

## Postal History prior to 1888

### 1876-79: Natal post office 'Zululand'

#### Zululand (*Natal nr 56*)



<http://www.postmarks.co.za/images/Natal%20shield%2056%202.jpg> , 1876

<http://www.postmarks.co.za/images/Natal%20shield%2056.jpg> , 1877

### 1879 during the Anglo-Zuluwar

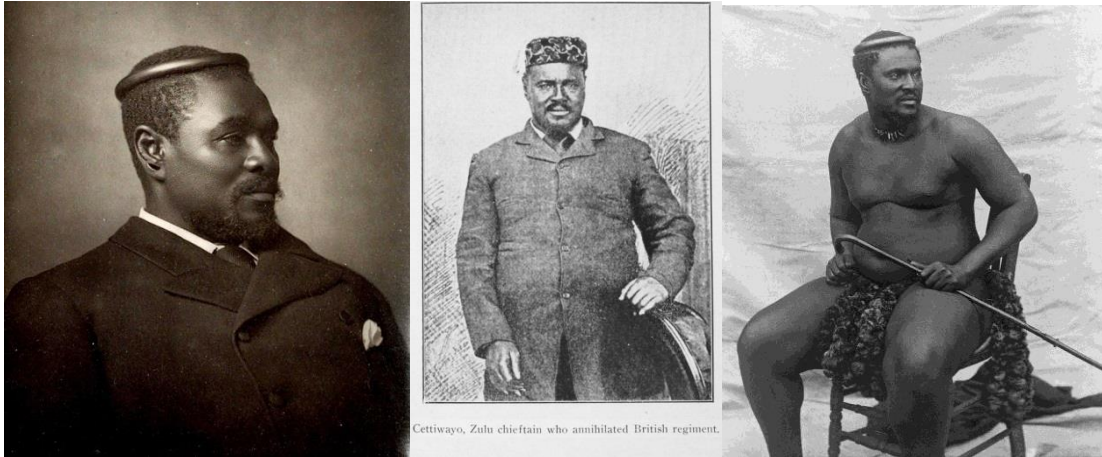


<http://www.forpostalhistory.com/images/3010.jpg>

“1879 Zululand / Great Britain. ZULU WAR. 1879 incoming envelope from London, addressed to Captain Edward B Evans, 10th Battery, 7th Brigade, Natal, the 1d and 6d embossed stamps cancelled by LONDON MY 8 79 'W 19' duplex cancellers. There are no

arrival markings. Captain Evans was commissioned as an officer in the Royal Artillery in 1867. In 1876 he served with a battery that was posted to Mauritius. In early 1879 his regiment were sent to South Africa after the defeat of the British at Isandalwala. He took part in the latter part of the Zulu War and was at Ulundi in the final conflict in July 1879. At the beginning of 1880 he returned to England and took up an appointment as Adjutant of Artillery Militia at Wicklow, Ireland. A fine incoming cover to an officer in the Zulu War, even though there are no arrival date stamps”.

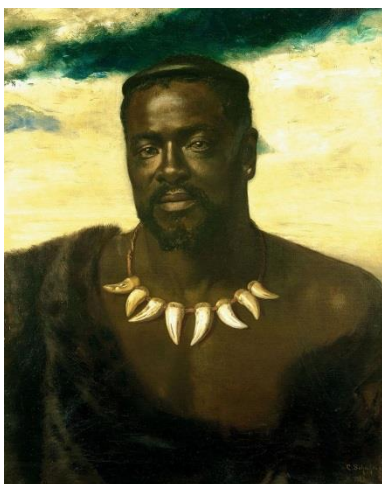
### Information about the Zulu Kings during and after the Anglo-Zulu War



[https://upload.wikimedia.org/wikipedia/commons/thumb/3/33/Cetshwayo\\_ka\\_Mpande%2C\\_cropped.jpg/800px-Cetshwayo\\_ka\\_Mpande%2C\\_cropped.jpg](https://upload.wikimedia.org/wikipedia/commons/thumb/3/33/Cetshwayo_ka_Mpande%2C_cropped.jpg/800px-Cetshwayo_ka_Mpande%2C_cropped.jpg)

[https://upload.wikimedia.org/wikipedia/commons/f/f7/Cettiwayo\\_Zulu\\_Chieftain\\_annihilated\\_British\\_regiment.jpg](https://upload.wikimedia.org/wikipedia/commons/f/f7/Cettiwayo_Zulu_Chieftain_annihilated_British_regiment.jpg)

<https://upload.wikimedia.org/wikipedia/commons/thumb/e/e5/Cetshwayo-c1875.jpg/800px-Cetshwayo-c1875.jpg>

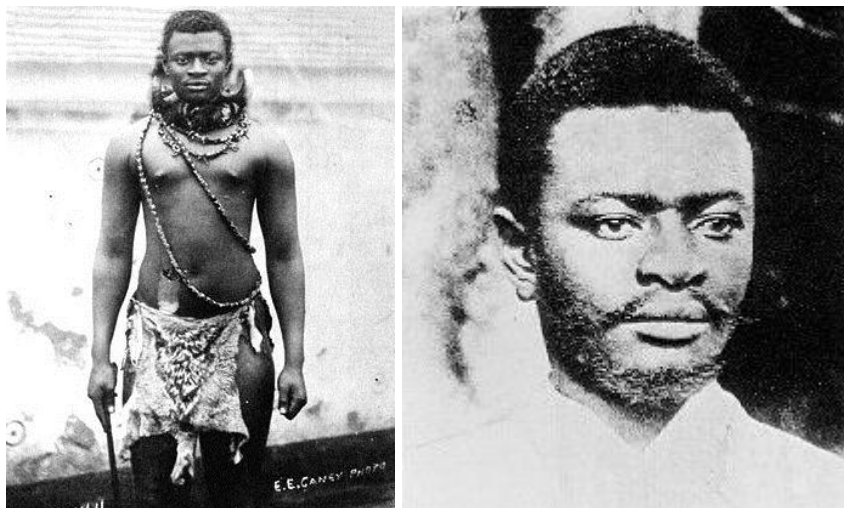


[https://upload.wikimedia.org/wikipedia/commons/thumb/0/0a/Cetshwayo%2C\\_King\\_of\\_the\\_Zulus\\_%28d.1884%29%2C\\_Carl\\_Rudolph\\_Sohn%2C\\_1882.jpg/800px-Cetshwayo%2C\\_King\\_of\\_the\\_Zulus\\_%28d.1884%29%2C\\_Carl\\_Rudolph\\_Sohn%2C\\_1882.jpg](https://upload.wikimedia.org/wikipedia/commons/thumb/0/0a/Cetshwayo%2C_King_of_the_Zulus_%28d.1884%29%2C_Carl_Rudolph_Sohn%2C_1882.jpg/800px-Cetshwayo%2C_King_of_the_Zulus_%28d.1884%29%2C_Carl_Rudolph_Sohn%2C_1882.jpg)

[jpg](#) “Cetshwayo, King of the Zulus came to England 1882 when this portrait was painted by Karl Rudolf Sohn.”

Cetshwayo kaMpande (/kɛʃˈwaɪ.oo/; Zulu pronunciation: [klétʃwajo kámpane]; c. 1826 – 8 February 1884) was the King of the Zulu Kingdom from 1872 to 1879 and its leader during the Anglo-Zulu War of 1879. His name has been transliterated as Cetawayo, Cetewayo, Cetywajo and Ketchwayo. He famously led the Zulu nation to victory against the British in the Battle of Isandlwana.

[https://en.wikipedia.org/wiki/Cetshwayo\\_kaMpande](https://en.wikipedia.org/wiki/Cetshwayo_kaMpande) (accessed June 2016)



<https://upload.wikimedia.org/wikipedia/commons/7/72/Dinizulu.jpg> “Photo of Dinizulu with wood badge beads during Zulu civil war”.

<https://upload.wikimedia.org/wikipedia/commons/4/4e/Dinizulu2.jpg>

Dinizulu kaCetshwayo (1868 – 18 October 1913,[1] commonly misspelled Dinizulu) was the king of the Zulu nation from 20 May 1884 until his death in 1913. He succeeded his father Cetshwayo, who was the last king of the Zulus to be officially recognized as such by the British. Zululand had been broken up into 13 smaller territories by the British after the Anglo-Zulu War, and Cetshwayo, and subsequently Dinuzulu, administered one of them. The British later realized the futility of breaking up Zululand into the territories and restored Cetshwayo as paramount leader of the territories. However, they left one of Cetshwayo's sons, Usibepu (Zibhebhu), alone with his lands intact. On 22 July 1883, Usibepu attacked Cetshwayo's new kraal in Ulundi, wounding the king and causing him to flee.

To contest the succession, Dinuzulu first appealed to the British, but had no response. He then offered rewards of land to Boer farmers of the Vryheid and Utrecht districts, to come and fight on his side and restore the Zulu Kingdom. In 1884 a group of Boer farmers from the districts of Utrecht and Vryheid undertook to help restore order, in return for land for the formation of an independent republic with access to the sea. Led by General Lucas Johannes Meijer, they formed Dinuzulu's Volunteers and after several clashes with Zibhebhu, defeated him at the Battle of Ghost Mountain (also known as the Battle of Tshaneni) on 5 June 1884.

The Nieuwe Republiek, established in northern Natal on land awarded to Boers by Dinuzulu, recognized by Germany and Portugal. It was later incorporated on its request by the ZAR because of financial problems. After the British annexed the coastal plains from the Thuhela river (Tugela) northwards in order to prevent the Boers from building a harbor. After a considerable dispute in a Natal arbitration court, Britain eventually recognized the New Republic, but reduced in size after annexation of the coastal plains by Britain and deprived of its claims to St Lucia for a harbor. The Nieuwe Republiek was incorporated on its own request with the Zuid Afrikaanse Republiek in 1888. Stability in the Zulu kingdom continued until the British annexed the Zuid Afrikaanse Republiek in 1899.

In 1890 Dinuzulu was captured by the British and exiled to the island of St. Helena—the same island on which Napoleon had been exiled—for seven years, for leading a Zulu army against the British due to annexation of the coastal plains of Zululand.

In 1906 the so-called Bambatha rebellion broke out. After the rebellion had been put down, Dinuzulu was accused of giving orders to Bambatha to start the rebellion and was put on trial for treason. Although he steadfastly protested his innocence, he was found guilty and sentenced to four years imprisonment in March, 1908.

Two years later an old friend of his, General Louis Botha, became Prime Minister of the Union of South Africa. Botha ordered that Dinuzulu be released and transported to the farm Uitkyk in the Transvaal, where he died in 1913.

He was succeeded by his son Solomon kaDinuzulu.”

[https://en.wikipedia.org/wiki/Dinuzulu\\_kaCetshwayo](https://en.wikipedia.org/wiki/Dinuzulu_kaCetshwayo) .

## Postage stamps of Zululand

### 1888 ‘Zululand’ on Natal 1882

Michel Nr 1 ½ p green



<http://kayatana.com/images/zululand/zululand00008.jpg>

<http://assets.catawiki.nl/assets/2012/1/2/e/6/b/e6bd4610-173d-012f-b18e-0050569439b1.jpg>

ESHOWE



<https://www.sandafayre.com/rarestamps/galleryimages/211.jpg>, double overprint

<https://www.sandafayre.com/rarestamps/galleryimages/212.jpg>, inverted

<https://www.sandafayre.com/rarestamps/galleryimages/524.jpg>, two overprints



<http://www.stolow.de/assets/images/Zululand5G12b.gif>

## 1888 'Zululand' on Great Britain

- Date of Issue : 1888 1st May - 1893

- Printer : Overprint by De La Rue
- Watermark: Imperial Crown - ½d to 1s, Anchor - 5s
- Number of Stamps: 11

[http://www.stamps-of-the-world.co.uk/wiki/Zululand\\_1888\\_Great\\_Britain\\_Overprinted](http://www.stamps-of-the-world.co.uk/wiki/Zululand_1888_Great_Britain_Overprinted)



<http://www.filat.ch/images/pictures/zsprpa123.jpg> “1888-93 QV ½d, 2d, 2½d, 3d, 4d, 5d, 6d, 9d, 1/- & 5/- (betw SG & 11). Values to the 1/- in vertical or horizontal STRIPS OF FIVE, the 5/- in STRIP OF THREE all hand stamped SPECIMEN type NA1 in violet. The UPU typically distributed specimens in multiples of either 3 or 5. F-VF/M/UM, couple minor imperfections although overall and outstanding group, the 5/- strip superb UM . A wonderful array, rare in multiples thus.”



<http://www.philasearch.com/bilder/A09232/S153/1558.jpg>



[http://www.rhodesia.co.za/Images/featured/AZ13\\_f.jpg](http://www.rhodesia.co.za/Images/featured/AZ13_f.jpg) “ZULULAND 1888-1893 GB QV complete set of ten, ½d to 1/-, overprinted ‘ZULULAND’. Each stamp further handstamped ‘CANCELLED’ (Samuel type GB14), superb unmounted mint. Very rare, this handstamp was applied by DLR to only 12 examples of certain stamps under Inland Revenue authority and only six examples of each duty are believed to exist outside the National Postal Museum. Ex Oswald Marsh. BPA certificate (2013).”

Michel Nr 2 1/2p orange red



[http://catalogue.klaseboer.com/vol1/html/s\\_afr/zulu2.jpg](http://catalogue.klaseboer.com/vol1/html/s_afr/zulu2.jpg)

<https://www.premierpostal.com/jpg1062/ZULULAND - Postmarks Eshowe 1062512 .jpg>

[http://ebid.s3.amazonaws.com/upload\\_medbig/4/3/8/1380285749-14386-13.jpg](http://ebid.s3.amazonaws.com/upload_medbig/4/3/8/1380285749-14386-13.jpg) ESHOWE



<https://1887jubileeissue.files.wordpress.com/2015/05/zululand-d-1-2d-vermilion-control-block.jpg?w=300&h=245>

Michel Nr 3 1p lilac



[http://ebid.s3.amazonaws.com/upload\\_medbig/4/7/1/1367821817-28489-9.jpg](http://ebid.s3.amazonaws.com/upload_medbig/4/7/1/1367821817-28489-9.jpg)



<https://1887jubileeissue.files.wordpress.com/2015/01/british-east-africa-cancelled-overprints-on-jubilees.png>

Michel Nr 4 2p green and red



<http://www.dcestamps.com/wp-content/uploads/2011/03/Zululand-Stamp.png>

<http://www.michael-hamilton.com/images/ZULU12342.jpg> "ZULULAND tamps: forged INVERTED OVERPRINT on GB QV 2d (SG.3), good used with FB (Foreign Branch) cancel."

[http://ebid.s3.amazonaws.com/upload\\_medbig/1/2/5/1380286080-14385-11.jpg](http://ebid.s3.amazonaws.com/upload_medbig/1/2/5/1380286080-14385-11.jpg) ESHOWE

Michel Nr 5 2 1/2p lilac on blue



[http://i.ebayimg.com/00/s/MTUxMFgxMjk2/z/Rl8AAOSwqBJXVqCb/\\$\\_35.JPG?set\\_id=880000500F](http://i.ebayimg.com/00/s/MTUxMFgxMjk2/z/Rl8AAOSwqBJXVqCb/$_35.JPG?set_id=880000500F)

<http://kayatana.com/images/zululand/zululand00007.jpg>

Michel Nr 6 3p lilac on yellow



<http://www.stevedrewett.com/images/6133.jpg> “ZULULAND - 1888 3d purple on yellow fine mint. SG 5. 1888-93 3d purple on yellow in fine mint condition. SG 5.”

Michel Nr 7 4p brown on green



[http://www.stampsoftheworld.co.uk/w/images/7/71/Zululand\\_1888\\_Great\\_Britain\\_Overprinted\\_f.jpg](http://www.stampsoftheworld.co.uk/w/images/7/71/Zululand_1888_Great_Britain_Overprinted_f.jpg)



<http://kayatana.com/images/zululand/zululand00014.jpg>

[http://ebid.s3.amazonaws.com/upload\\_medbig/5/5/1/1380286264-14462-3.jpg](http://ebid.s3.amazonaws.com/upload_medbig/5/5/1/1380286264-14462-3.jpg)

[http://ebid.s3.amazonaws.com/upload\\_medbig/6/7/9/1317304848-30383-0.jpg](http://ebid.s3.amazonaws.com/upload_medbig/6/7/9/1317304848-30383-0.jpg) **ESHOWE**

Michel Nr 8 5p lilac on blue (1893)



<http://www.philasearch.com/bilder/A09352/S61/25612.jpg>

<http://www.stevedrewett.com/images/6134.jpg> “ZULULAND - 1893 5d dull purple and blue fine mint. SG 7. 1893 5d dull purple and blue in fine mint condition. SG 7.”

<https://1887jubileeissue.files.wordpress.com/2015/01/zululand-5d-with-inverted-watermark.jpg>

Michel Nr 9 6p dark lilac on pink



<http://www.stevedrewett.com/images/6135.jpg> “ZULULAND - 1888 6d purple on rose-red fine mint. SG 8. 1888-93 6d purple on rose-red in fine mint condition. SG 8.”

Michel Nr 10 9p blue and lilac



[http://www.stampsoftheworld.co.uk/w/images/8/82/Zululand\\_1888\\_Great\\_Britain\\_Overprinted\\_i.jpg](http://www.stampsoftheworld.co.uk/w/images/8/82/Zululand_1888_Great_Britain_Overprinted_i.jpg)

Michel Nr 11 1Sh sea green



<http://www.stampworld.com/media/catalogue/Zululand/Postage-stamps/B9-i.jpg>

<https://cdn.philasearch.com/A09415/S125/1217.jpg>

<http://www.corbitts.com/auctions/stamps/151/images/1438.jpg> ESHOWE

Michel Nr 12 5Sh carmine pink



<http://stampauctionnetwork.com/f/61/830.jpg> “1892 "ZULULAND" overprint on 5/- Rose, lovely mint single of this high value, well centered and surrounded by full even perforations, fresh bright color, o.g., never hinged, choice very fine”

<https://www.sandafayre.com/rarestamps/galleryimages/209.jpg>



<https://www.sandafayre.com/rarestamps/galleryimages/2381.jpg>

[http://www.stampcommunity.org/uploaded/krelyea/20160424\\_colmes42316\\_c1.jpg](http://www.stampcommunity.org/uploaded/krelyea/20160424_colmes42316_c1.jpg)

“Zululand 5s #11 with Rare Picadilly Cancel. I found this in an old album and thought it was a nice stamp until I noticed the cancel.”

No. 5603.....

# DAVID BRANDON

EXPERT COMMITTEE

77, STRAND, LONDON WC2R 0DE, ENGLAND

Date.. 30-5-1980.....

*The Committee is of the opinion that the*

*Zululand. 1888-93, 5/- rose of Great Britain,  
Perf. 14, Wmk Anchor, overprinted 'ZULULAND' in*

*black and handstamped 'SPECIMEN'  
in violet (S.G. 11 '3') vertical strip  
of three with full original gum is  
genuine*



*W.P. Bird*

*David Brandon*



Natal revenue overprinted

Date of Issue : 1891 June

Watermark: Crown over CA

Perf : 14

1d stamp authorised for both postal  
and fiscal use.

[http://www.stamps-of-the-world.co.uk  
/wiki/Zululand\\_1891\\_Natal\\_Revenue  
\\_Overprinted](http://www.stamps-of-the-world.co.uk/wiki/Zululand_1891_Natal_Revenue_Overprinted)

## 1889 Zululand, revenue essay



<http://www.rhodesia.co.za/Images/large/AZ55.jpg>: “ZULULAND / Revenue Essay 1889 stamp-sized essay for a 1d duty inscribed ‘Revenue / Revenue’. Handpainted in mauve, green and Chinese white on buff tracing paper (60x77mm, corner faults), dated ‘May 20th 89’. A superb and most attractive essay.”

## 1894 ‘Zululand’ on Natal 1882

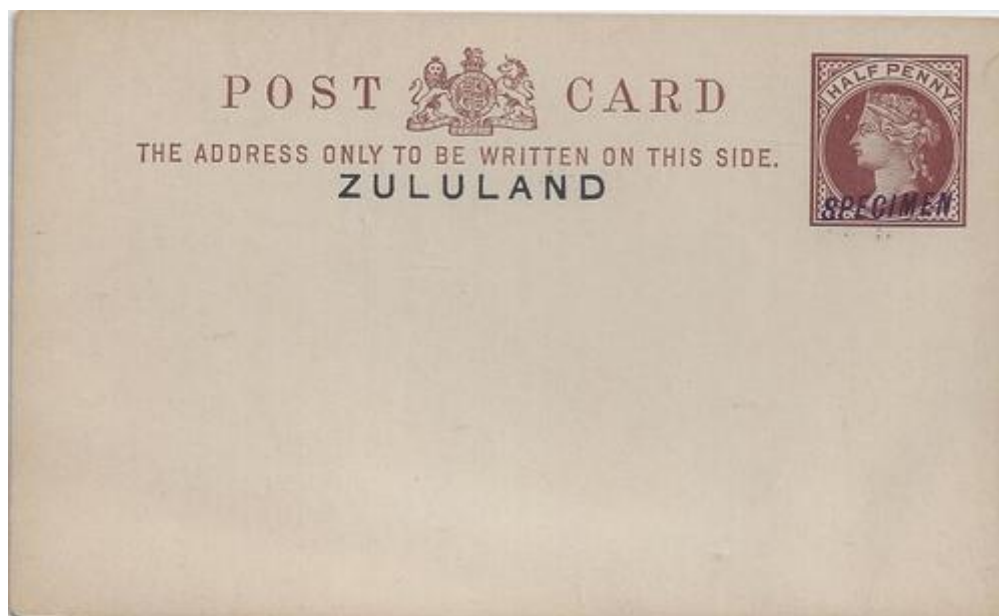
Michel Nr 13 6p violet



<https://www.sandafayre.com/rarestamps/galleryimages/2914.jpg>

<https://www.sandafayre.com/stockimages/23328985.jpg>

<http://kayatana.com/images/zululand/zululand00013.jpg>



[http://img.bidorbuy.co.za/image/upload/user\\_images/449/1402449/1402449\\_150522085847\\_Zululand\\_halfd\\_postcard\\_specimen.jpg](http://img.bidorbuy.co.za/image/upload/user_images/449/1402449/1402449_150522085847_Zululand_halfd_postcard_specimen.jpg) "Zululand GB half card overprinted Zululand and SPECIMEN handstamp in violet"



<http://www.stevedrewett.com/images/7764.jpg> "ZULULAND - 1893 1/2d+1/2d dark brown PSRC unused. H&G 3b. 1893 1/2d+1/2d dark brown on white postal stationery reply type postcard with both cards showing the 'type b' setting and with linen hinge. Fine unused. H&G 3b."



[http://img.bidorbuy.co.za/image/upload/user\\_images/449/1402449/1402449\\_150522085635\\_Zululand\\_1d\\_postcard\\_specimen.jpg](http://img.bidorbuy.co.za/image/upload/user_images/449/1402449/1402449_150522085635_Zululand_1d_postcard_specimen.jpg) “Zululand GB 1d card overprinted Zululand and SPECIMEN handstamp in violet”



<http://www.stevedrewett.com/images/4145.jpg> “ZULULAND - 1893 1d+1d PSC handstamped SPECIMEN. H&G 4. 1893 1d+1d brick-red on buff postal stationery reply type postcard in fine unused condition (mildly aged) handstamped SPECIMEN in violet. H&G 4.”



<http://www.raritanstamps.com/Catold/64/LotImg/365.jpg>

Michel Nr 14 1/2p lilac on green



[http://ebid.s3.amazonaws.com/upload\\_medbig/9/4/7/1367821820-28489-11.jpg](http://ebid.s3.amazonaws.com/upload_medbig/9/4/7/1367821820-28489-11.jpg)

[https://upload.wikimedia.org/wikipedia/commons/2/22/Stamp\\_Zululand\\_1894\\_0.5p.jpg](https://upload.wikimedia.org/wikipedia/commons/2/22/Stamp_Zululand_1894_0.5p.jpg) “An 1894 halfpenny of the Key Plate issue, used in 1896”.

<https://s-media-cache-ak0.pinimg.com/236x/33/93/ff/3393ff16507ac9cf5daf0af3036959ae.jpg>

[http://ebid.s3.amazonaws.com/upload\\_medbig/1/8/8/1367822166-28489-14.jpg](http://ebid.s3.amazonaws.com/upload_medbig/1/8/8/1367822166-28489-14.jpg) ESHOWE

Michel Nr 15 1p lilac on carmine



[http://ebid.s3.amazonaws.com/upload\\_medbig/0/4/9/1448262708-854-4.jpg](http://ebid.s3.amazonaws.com/upload_medbig/0/4/9/1448262708-854-4.jpg)

[https://www.premierpostal.com/jpg1068/ZULULAND-Postmarks\\_Lower\\_Tugela\\_1068701\\_.jpg](https://www.premierpostal.com/jpg1068/ZULULAND-Postmarks_Lower_Tugela_1068701_.jpg)

Michel Nr 16 2 1/5p lilac on blue



[http://www.stampsoftheworld.co.uk/w/images/7/75/Zululand\\_1894\\_Definitive\\_Issue\\_c.jpg](http://www.stampsoftheworld.co.uk/w/images/7/75/Zululand_1894_Definitive_Issue_c.jpg)

Michel Nr 17 3p lilac on brown



[http://www.stampcommunity.org/uploaded/cjd/20120916\\_Zululand183d.jpg](http://www.stampcommunity.org/uploaded/cjd/20120916_Zululand183d.jpg)

[http://ebid.s3.amazonaws.com/upload\\_medbig/6/2/7/1448262709-854-5.jpg](http://ebid.s3.amazonaws.com/upload_medbig/6/2/7/1448262709-854-5.jpg)

Michel Nr 18 6p lilac on black



[http://www.stampsoftheworld.co.uk/w/images/a/a6/Zululand\\_1894\\_Definitive\\_Issue\\_e.jpg](http://www.stampsoftheworld.co.uk/w/images/a/a6/Zululand_1894_Definitive_Issue_e.jpg)

Michel Nr 19 1Sh green



<http://www.stevedrewett.com/images/6136.jpg> “ZULULAND - 1894-96 1/- green superb fresh mint. SG 25 1894-96 1/- green in superb mint conditon. Hardly mounted. SG 25. Michel Nr 20 2Sh/6p green on black (1896)”.

[http://www.stampsoftheworld.co.uk/w/images/b/b2/Zululand\\_1894\\_Definitive\\_Issue\\_Vf.jpg](http://www.stampsoftheworld.co.uk/w/images/b/b2/Zululand_1894_Definitive_Issue_Vf.jpg)



<http://assets.catawiki.nl/assets/2013/2/11/9/f/1/9f1b5750-567d-0130-9735-005056960006.jpg>

[http://www.stampsoftheworld.co.uk/w/images/9/9b/Zululand\\_1894\\_Definitive\\_Issue\\_Vg.jpg](http://www.stampsoftheworld.co.uk/w/images/9/9b/Zululand_1894_Definitive_Issue_Vg.jpg)

Michel Nr 21 4Sh green on red



<http://stampauctionnetwork.com/I/125/1219.jpg>

<https://s-media-cache-ak0.pinimg.com/236x/81/eb/19/81eb198b2f2a9c713164de6c23776559.jpg>

[http://www.stampsoftheworld.co.uk/w/images/c/cf/Zululand\\_1894\\_Definitive\\_Issue\\_Vh.jpg](http://www.stampsoftheworld.co.uk/w/images/c/cf/Zululand_1894_Definitive_Issue_Vh.jpg)

Michel Nr 22 1£ lilac on red



<https://www.sandafayre.com/rarestamps/galleryimages/214.jpg>

<http://stampauctionnetwork.com/f/61/832.jpg> “1894 £1 Purple on red, a remarkably well centered mint single, quite strong violet color for this issue as the violet is rather fragile, o.g., l.h., extremely fine”

<https://www.cherrystoneauctions.com/auctionscans200605/2026.jpg> **ESHOWE**



[http://www.stampsoftheworld.co.uk/w/images/5/56/Zululand\\_1894\\_Definitive\\_Issue\\_Vi.jpg](http://www.stampsoftheworld.co.uk/w/images/5/56/Zululand_1894_Definitive_Issue_Vi.jpg)

Michel Nr 23 5£ lilac and black on red



<https://www.sandafayre.com/rarestamps/galleryimages/217.jpg>

<http://stampauctionnetwork.com/f/61/833.jpg> “1894 £5 Purple and black on red, attractive used single of this rare high value, well centered and with crisp portion of **Eshowe** c.d.s. dated "OC 31 95", paper color is bright and fresh, accompanying certificate states "rubbed surface" which means the violet color is slightly rubbed, we feel this is a bit harsh since this is the normal slight rubbing that occurs on almost all of these, particularly when used, still a very fine and highly desirable used copy of this rarity”

[https://upload.wikimedia.org/wikipedia/commons/c/c7/1894\\_%C2%A35\\_revenue\\_stamp\\_of\\_Zululand\\_used\\_1896.JPG](https://upload.wikimedia.org/wikipedia/commons/c/c7/1894_%C2%A35_revenue_stamp_of_Zululand_used_1896.JPG) “An 1894 stamp of Zululand used for revenue purposes in 1896.”

<https://www.cherrystoneauctions.com/auctionscans200605/2028.jpg>



<https://www.sandafayre.com/stockimages/47134337.jpg> "SOUTH AFRICA - COLONIES & REPUBLICS - ZULULAND 1894-96 £5 purple & black/red "Specimen" opt'd, SG 29s, mint with part OG".



[http://www.stamps-of-the-world.co.uk/w/images/a/a9/Zululand\\_1894\\_Definitive\\_Issue\\_Vfa.jpg](http://www.stamps-of-the-world.co.uk/w/images/a/a9/Zululand_1894_Definitive_Issue_Vfa.jpg) ` Full Set to £5 each overprinted SPECIMEN and affixed to portions of De La Rue daybook pages. Manuscript dates for each value.`

## Revenue stamps that could also be used as postage stamps<sup>1</sup>

### 1891 'Zululand' on Natal

“The British colony of Zululand issued revenue stamps in 1888. The only set consisted of seven values of 1d, 1s, 5s, 9s, £1 (two different colours), £5 and £20 of Natal revenues overprinted ZULULAND in a similar overprint to that used for postage stamps. The 1d later became valid for postal use as well. All the higher values now command high prices and are quite rare. In addition to this issue, the same Natal £5 is known with a different overprint in violet, but it is not known if this was a legitimate issue or not. Natal's high value revenues were replaced by the postage stamps with face values up to £5 which were issued in 1894. The higher values of this set were mainly intended for fiscal rather than postal use.”

[https://en.wikipedia.org/wiki/Revenue\\_stamps\\_of\\_Zululand](https://en.wikipedia.org/wiki/Revenue_stamps_of_Zululand)

Michel S1 1p lilac



<http://media.stampworld.com/media/catalogue/Zululand/Revenue-stamps/A-s.jpg>

<http://assets.catawiki.nl/assets/2012/1/2/8/9/5/8950aa20-173e-012f-b10d-0050569439b1.jpg>

Michel S2 1Sh carmine on lilac



<http://media.stampworld.com/media/catalogue/Zululand/Revenue-stamps/A1-s.jpg>

Michel S3 5Sh carmine on lilac

---

<sup>1</sup> Although for Nrs S2-S7 Michel Katalog Süd- und Zentralafrika, Zululand, p. 937, doubts if these reveue stamps have ever been used as postage stamps. For Nr S1 it is certain



<http://www.stampworld.com/media/catalogue/Zululand/Revenue-stamps/A2-i.jpg>

Michel S4 9Sh carmine on lilac



<http://www.stampworld.com/media/catalogue/Zululand/Revenue-stamps/A3-i.jpg>

Michel S5 1£ green



<http://www.stampworld.com/media/catalogue/Zululand/Revenue-stamps/A4-i.jpg>

Michel S6 5£ red on green



<http://www.stampworld.com/media/catalogue/Zululand/Revenue-stamps/A5-i.jpg>

Michel S7 20£ black on green



<https://www.sandafayre.com/rarestamps/galleryimages/932.jpg>

<http://www.stampworld.com/media/catalogue/Zululand/Revenue-stamps/A6-i.jpg>

<http://www.michael-hamilton.com/images/ZULU12346.jpg> “

ZULULAND stamps: forgery of the Natal QV £20 REVENUE CA wmk with ZULULAND reading up, fine used.”



<http://www.corbitts.com/auctions/stamps/136/images/1686.jpg> “1891 FISCAL, Natal Revenue £20 green & black fresh unused single opt. ZULULAND. Great rarity (old SG. 58, Yvert 8 -). BPA Cert as genuine but re-gummed.

## Post offices in Zululand

Also see [http://www.stamps-of-the-world.co.uk/wiki/Category:Zululand\\_Postmarks](http://www.stamps-of-the-world.co.uk/wiki/Category:Zululand_Postmarks) (17 different ones)

### **Entonjaneni (later called Melmoth) 28s35 31e24**



<http://www.postmarks.co.za/images/Entonjaneni%20cover.jpg> : “Replaced by Melmoth; Opened: 1888-1892 Area: Central PO Type: PO”



<http://www.michael-hamilton.com/images/ZULU46874.jpg> ; ‘ENTONJANENI Zululand postmark, (Z.2) 1 DEC 91 on Natal ovp'd QV 1d (SG.F1)’.

<https://s-media-cache-ak0.pinimg.com/564x/8b/e5/a1/8be5a101012ff666c537ed82c66e0e4f.jpg>



<http://www.forpostalhistory.com/images/677.jpg> “1888

1888 envelope to Pietermaritzburg, Natal, bearing a 1d cancelled **POST OFFICE ENTONJANENI** JY 4 88. On the reverse are Lower Tugela, Natal, JY 6, Eshowe JY 6, Durban JY 7 and Pietermaritzburg JY 9 88. The ESHOWE datestamp is in violet and is the very scarce Proud D1 with no 'Zululand' in the canceller. The post office at Entonjaneni opened on 23 April 1888, and this is an early envelope from there. A fine and very scarce cover.”

<http://www.michael-hamilton.com/images/ZULU46413.jpg>

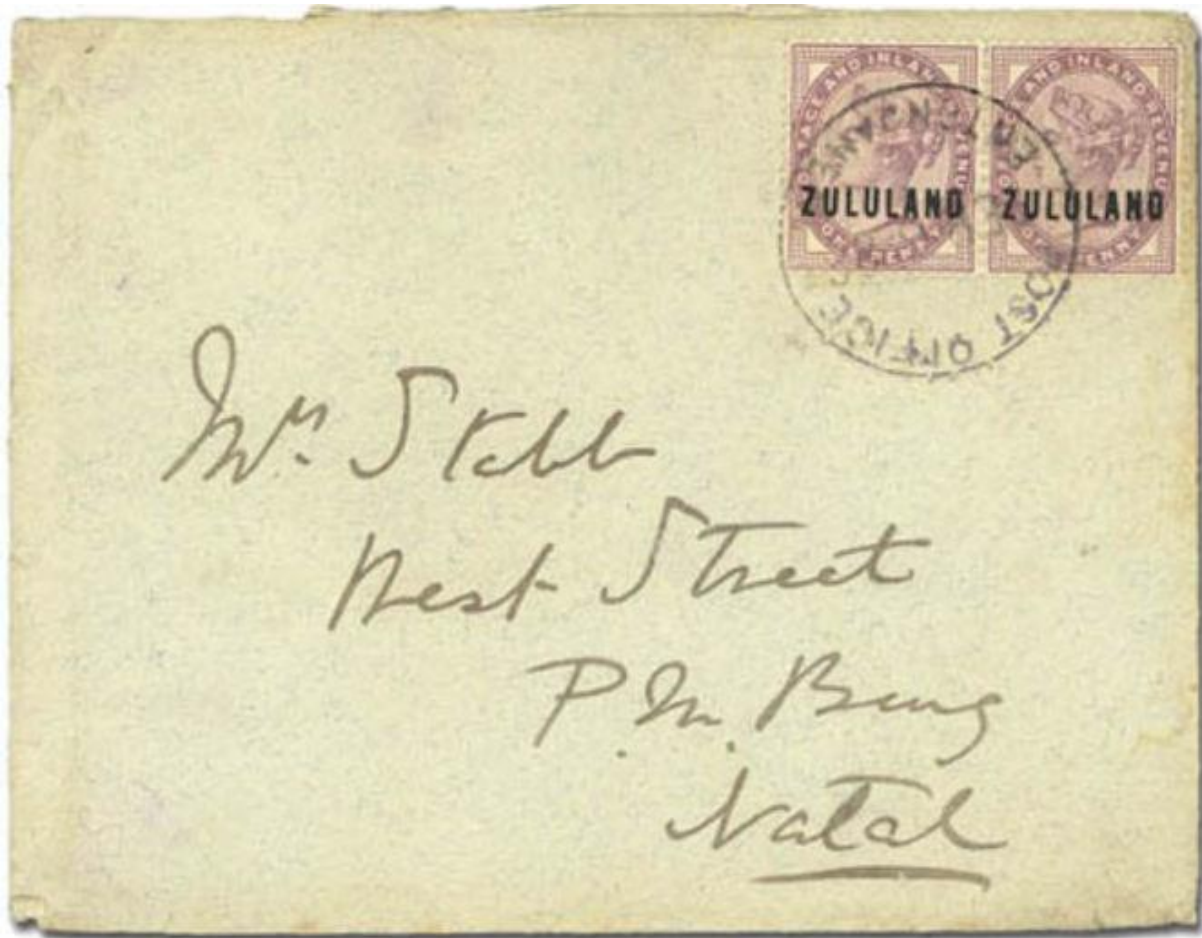
<http://www.michael-hamilton.com/images/ZULU46324.jpg>

Current information: “Melmoth (Previously Entonjaneni) is a small town situated in KwaZulu-Natal, South Africa. The town was established in the Mthonjaneni district after the annexation of Zululand by the United Kingdom in 1887 and was named after Sir Melmoth Osborn. Large wattle plantations were set up and a wattle bark factory was established in 1926. The district is also filled with sugar cane plantations from the outskirts of the town into the surrounding villages, animals and the most extraordinary bird types. The main hospital in Melmoth is St Marys kwaMagwaza Hospital that caters for the people of Melmoth and surrounding villages. It is a government funded hospital”.

<http://www.stamps-of-the-world.co.uk/wiki/Entonjaneni>



[http://www.stamps-of-the-world.co.uk/w/images/thumb/0/07/Entonjaneni\\_d.jpg/640px-Entonjaneni\\_d.jpg](http://www.stamps-of-the-world.co.uk/w/images/thumb/0/07/Entonjaneni_d.jpg/640px-Entonjaneni_d.jpg)



[http://www.stamps-of-the-world.co.uk/w/images/7/70/Entonjaneni\\_Cover\\_b.jpg](http://www.stamps-of-the-world.co.uk/w/images/7/70/Entonjaneni_Cover_b.jpg)

**Eshowe 28s58 31e29**



[https://upload.wikimedia.org/wikipedia/commons/7/7a/Stamp\\_Zululand\\_1888\\_1p.jpgv](https://upload.wikimedia.org/wikipedia/commons/7/7a/Stamp_Zululand_1888_1p.jpgv) "This overprinted British stamp was used at Eshowe in August 1890".

<http://www.postmarks.co.za/images/Eshowe%201887%20Blanc.jpg> : "Opened: 1887-1898 Area: Central PO Type: PO"



<https://1887jubileeissue.files.wordpress.com/2014/01/zululand-set-on-piece.jpg>



<http://www.forpostalhistory.com/images/1326.jpg> “1890.1888 1/2d green with the variety “overprint double”. Fine used with ESHOWE JA 13 90 cancel. 1976 R.P.S. Certificate”.



<http://www.forpostalhistory.com/images/675.jpg> “1892

1892 commercial envelope to Pietermaritzburg, Natal, franked with a 1d fiscal stamp of Natal overprinted ZULULAND, cancelled **ESHOWE** JA 26 92. On the reverse are Durban JA 27 and Pietermaritzburg JA 28 92 transit and arrival datestamps. On 27 June 1891 a proclamation in the Natal Government Gazette authorised the use of this stamp for postal purposes. Although it is often seen as a used stamp, it is rarely seen used on cover. Very fine.”

1893 1d+1d brick red on cream postal stationery reply type postcard in fine unused condition. H&G 4.”



<http://www.forpostalhistory.com/images/676.jpg>. “1894

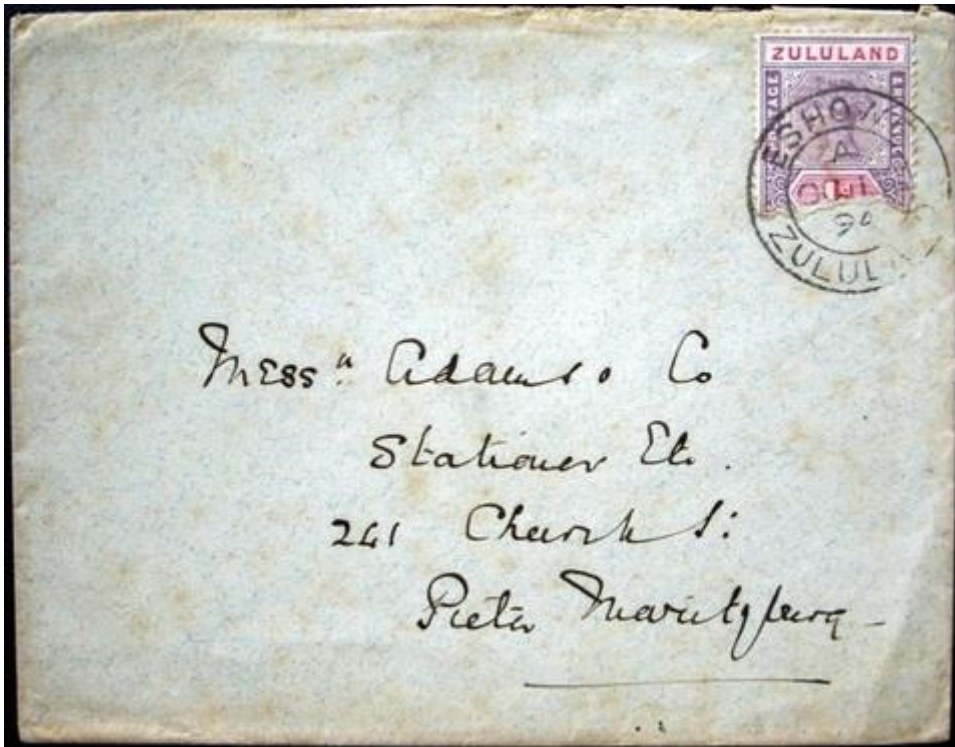
1894 envelope to England bearing a strip of three 1d **fiscal** stamp of Natal overprinted ZULULAND, tied by **ESHOWE** JA 15 94 single ring datestamps. On the reverse are Durban JA 17 and Watford FE 13 94 transit and arrival datestamps. The cover was overpaid by a ½d, but at that time there was a shortage of ½d stamps. The single ring **ESHOWE** canceller (Proud D4) is uncommon. It was only used from 31.5.93. to 2.5.94. On 27 June 1891 a proclamation in the Natal Government Gazette authorised the use of these stamps for postal purposes. A very scarce usage of these stamps. Fine.”



<https://www.sandafayre.com/stockimages/18022503.jpg> "SOUTH AFRICA - COLONIES & REPUBLICS  
- ZULULAND 1893 6d dull purple, SG 16, VFU full perfs." **ESHOWE** postmark



<http://www.stampsoftheworld.co.uk/w/images/8/8c/Eshowezululand.jpg>



<http://www.postmarks.co.za/images/Eshowe%201894%20C%20cover.jpg>

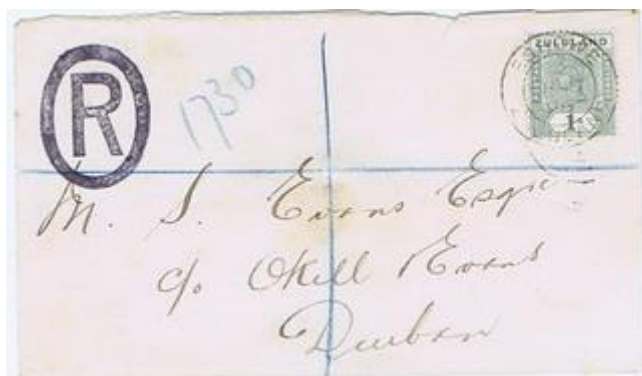


[http://www.stamps-of-the-world.co.uk/w/images/thumb/d/d3/Eshowezululand\\_Cc.jpg/800px-Eshowezululand\\_Cc.jpg](http://www.stamps-of-the-world.co.uk/w/images/thumb/d/d3/Eshowezululand_Cc.jpg/800px-Eshowezululand_Cc.jpg) Postmark **Eshowe** 1894.



<http://www.forpostalhistory.com/images/656.jpg> “1895

1895 1d postal card to Germany, cancelled **ESHOWE** OC 14 95. Durban OC 15 and Hannover 12.11.95. datestamps are on the front of the card and a London NO 11 95 transit c.d.s. is on the reverse. Fine.”



<http://www.forpostalhistory.com/images/672.jpg> “1896

1896 registered envelope to Durban bearing a 1/- cancelled **ESHOWE** SP 5 96. On the reverse is a Durban 8 SP 96 arrival datestamp. Presumably philatelic, but a scarce stamp on cover. Fine.”



<http://www.postmarks.co.za/images/Eshowe%201896%202C.jpg>



<http://www.forpostalhistory.com/images/671.jpg> “1897

1897 envelope to a Major in the Royal Artillery, Ladysmith, Natal, bearing a left marginal pair of 3d, paying a rate of 2½oz to 3oz, cancelled **ESHOWE** AU 17 97. On the reverse are Durban AU 19 and Ladysmith AU 20 97 transit and arrival datestamps. Fine and attractive.”



<http://www.forpostalhistory.com/images/458.jpg>. 1897

“1897 registered envelope to Germany, franked with a 6d and 1/- cancelled **Eshowe** SP 15 97. A London transit cancel is on the face, on the reverse is an arrival datestamp 11.10.97. Fine.”



<http://www.forpostalhistory.com/images/3016.jpg> 1898” Natal

1898 envelope to the USA franked with a 1/2d and a pair of 1d's cancelled **ESHOWE ZULULAND NO 18 98**. On the back are Stanger NO 19 and Boston DEC 17 1898 transit and arrival cancels. The use of Zululand stamps was stopped on 30 July 1898 but the Zululand cancellers were still used for a while after that.”



<http://www.postmarks.co.za/images/Eshowe%201C%203%201898.jpg>

current map:



<https://upload.wikimedia.org/wikipedia/en/1/1b/JCW-Map-Natal-Eshowe.png>

current information: “Eshowe, is the oldest town of European settlement in Zululand. Eshowe's name is said to be inspired by the sound of wind blowing through the more than 4 km<sup>2</sup> of the indigenous Dhlinda Forest, the most important and striking feature of the town. Although the name is most likely to be derived from the Zulu word for the xysmalobium shrubs, showe or shongwe. Today Eshowe is a market town, with a 100 km radius catchment area, two shopping centres, a main bus station serving the hinterland, a major hospital, and several schools”.

[http://www.stampsoftheworld.co.uk/wiki/Eshowe\\_\(ZA\)](http://www.stampsoftheworld.co.uk/wiki/Eshowe_(ZA))

### **Eshowe Camp near 28s58 31e29**

<http://www.postmarks.co.za/PH%20Zululand%20Entonjaneni.htm> : “Opened: ?-? Area: Central PO Type: Temporary; Natal Telegraph report only”

### **Hlabisa 28s08 31e52**



<http://www.postmarks.co.za/images/Hlabisa.jpg>: “Opened: 1894-1898 Area: North/Central PO Type: PA”



<http://www.michael-hamilton.com/images/ZULU46847.jpg> “HLABISA, Zululand postmark. (Z.6) 9 NOV 1895 on QV 1d (SG.21).”



<http://www.michael-hamilton.com/images/ZULU58267.jpg> “First types HLABISA and LOWER UMFOLOSI, Zululand postal history. 1895 exceptionally rare and perhaps unique side-by-side combination purple Resident Magistrate's Office (R.M. OFFICE) cds for HLABISA 16 NOV 1895 and LOWER UMFOLOSI NOV 19 1895 on GB ovp'd 1d Post Card written by Edith Turnbull at "Bush View 15th Nov. 1895" to Cockington, Torquay with ESHOWE and DURBAN transits”.



<http://www.forpostalhistory.com/images/674.jpg> “1897

1897 envelope to Pietermaritzburg, Natal, bearing a pair of ½d's cancelled by two very fine strikes of the rare violet **R.M. OFFICE, HLABISA**, 12 DEC 1897 datestamp. On the reverse is a blue LOWER UMFOLOSI 13 DEC, Eshowe DE 15, Durban 16 DE and a Pietermaritzburg 17 DEC 97 transit and arrival cancels. The Post Office at Hlabisa was opened in 1893. A very fine and rare cover.”

Current information: “Hlabisa is a settlement in Umkhanyakude District Municipality in the KwaZulu-Natal province of South Africa. Village between the Hluhluwe and Umfolozi game reserves, some 40 km north-west of Mtubatuba. Named after the Hlabisa tribe of Zulus”.

<http://www.stampsoftheworld.co.uk/wiki/Hlabisa>

### **Ingwavuma 27s09 32e00**



<http://www.michael-hamilton.com/images/ZULU46864.jpg> “INGWAVUMA, Zululand postmark (Z.7) in purple dated 31 AUG 1895 on QV 1d (SG.21)”.

[http://www.stampsoftheworld.co.uk/w/images/thumb/6/6d/Ingwavuma\\_a.jpg/180px-Ingwavuma\\_a.jpg](http://www.stampsoftheworld.co.uk/w/images/thumb/6/6d/Ingwavuma_a.jpg/180px-Ingwavuma_a.jpg) ; also: <http://www.postmarks.co.za/images/Ingwavuma%201895.jpg>:

“Opened: 1895-1898 Area: North PO Type: PA”

### **Lower Tugela 29s10 31e24**



<http://www.postmarks.co.za/images/Lower%20Tugela%20Zululand%201894.jpg>: “Opened: 1894-1898 Area: South PO Type: ?”



<http://www.forpostalhistory.com/images/673.jpg> “1895

1895 envelope to Durban, Natal, franked with a 1d cancelled by a fine strike of the double ring **LOWER TUGELA, ZULULAND MY 15 95**. datestamp. On the reverse is a Lower Tugela, Natal, transit and Durban arrival cancel. The post office at Lower Tugela Zululand was opened in 1889 and J.L. Stokkeland was the postmaster. The post office at Lower Tugela Natal, across the river at Fort Pearson, was opened in 1880. A scarce cancellation on cover. Fine.”



[https://www.premierpostal.com/jpg1068/ZULULAND -  
\\_Postmarks\\_Lower\\_Tugela\\_1068701.jpg](https://www.premierpostal.com/jpg1068/ZULULAND_-_Postmarks_Lower_Tugela_1068701.jpg)

**Lower Umfolosi *near28s13 31s15***



<http://www.michael-hamilton.com/images/ZULU46862.jpg> “LOWER UMFOLOSI (name at base), Zululand postmark. (Z.6) 18 OCT 1895 on QV 1d (SG.21).”

[http://www.stamps-of-the-world.co.uk/w/images/thumb/e/ee/Lower\\_Umfolosi\\_PM\\_a.jpg/180px-Lower\\_Umfolosi\\_PM\\_a.jpg](http://www.stamps-of-the-world.co.uk/w/images/thumb/e/ee/Lower_Umfolosi_PM_a.jpg/180px-Lower_Umfolosi_PM_a.jpg)



<https://cdn.globalauctionplatform.com/c2f540c8-baf6-45ab-a3fa-a54c00b8a125/95ceff11-6058-4b84-a1f8-a55501359dbd/540x360.jpg> “Zululand The Postmarks Lower Umfolosi 1898 (23 June) envelope from Maidstone to Hlabissu District, Embonbene”, bearing 2½d. with c.d.s and showing "r.m. office/hlabisa" rubber datestamp below adhesive, the Zululand Post Office unable to deliver the cover and marked "Try G.P.O. Durban, Natal" in blue crayon at top with light Returned Letter Office natal c.d.s. below and framed "unclaimed" alongside, the reverse with Lower Umfolosi (20 and 26.7) and Hlabisa (22.7) rubber datestamps in violet, Eshowe (19 and 27.7), T.P.O. Natal and Durban (28.7) c.d.s.; perimeter faults mainly confined to reverse though an uncommon example of undelivered mail to Zululand.”



<http://www.postmarks.co.za/images/Lower%20Umfolzi%20202.jpg>: “Opened: 1894-1898 Area: North/Central PO Type: PA”

**Maputa 26s58 32e44**



<http://www.postmarks.co.za/images/Maputa%20Zululand.jpg>: “Opened: 1894-1898 Area: North PO Type: PA ; "RESIDENT MAGISTRATE" “

**Melmoth (previously Entonjaneni) 28s38 31e24**



<http://www.postmarks.co.za/images/Melmoth%202C%20early.jpg>: "Opened: 1893-1898 Area:  
Central PO Type: PO"



<http://www.michael-hamilton.com/images/ZULU46873.jpg>



<https://s-media-cache-ak0.pinimg.com/564x/8c/03/18/8c031899c90bc469795b15b7e24ae6ce.jpg>



<https://cdn.globalauctionplatform.com/c2f540c8-baf6-45ab-a3fa-a54c00b8a125/de88d948-28cb-44ea-aeb0-a5550135a221/540x360.jpg> “Zululand The Postmarks Melmoth 1895 (16 Nov.) ½d. brown reply paid card, both portions uprated with 1894 ½d. mauve and green, to Germany, cancelled by "melmoth/zululand" double-ring datestamp and showing, on reverse, Eshowe (18.11), Durban (19.11) and Zwickau (15.12) datestamps”



<https://cdn.globalauctionplatform.com/c2f540c8-baf6-45ab-a3fa-a54c00b8a125/df8ff118-db69-4553-8c30-a5550135a3fd/original.jpg> “Zululand The Postmarks Melmoth 1897 (19 May) envelope to

Glasgow, bearing 1894 ½d. dull mauve and green (5) cancelled by three "melmoth/zululand" double-ring datestamps, Durban (21.5) datestamp on reverse; an attractive franking of the 2½d. overseas rate."

Current information: "Melmoth is a small town situated in KwaZulu-Natal, South Africa. The town was established in the Mthonjaneni district after the annexation of Zululand by the United Kingdom in 1887 and was named after Sir Melmoth Osborn. Large wattle plantations were set up and a wattle bark factory was established in 1926. The district is also filled with sugar cane plantations from the outskirts of the town into the surrounding villages, animals and the most extraordinary bird types. The main hospital in Melmoth is St Marys kwaMagwaza Hospital that caters for the people of Melmoth and surrounding villages. It is a government funded hospital".

<http://www.stampsoftheworld.co.uk/wiki/Melmoth>

### **Ndwandwe 27s58 31e35**

Changed to Nongoma

<http://www.postmarks.co.za/PH%20Zululand%20Entonjaneni.htm>

### **Nkandhla 28s37 31e05**



<https://cdn.globalauctionplatform.com/c2f540c8-baf6-45ab-a3fa-a54c00b8a125/a5a1022b-7016-4505-a6fa-a5550135aa77/540x360.jpg> "Zululand The Postmarks **Nkandhla** 1891 (25 Feb.) envelope to Pietermaritzburg, bearing 1888 1d. lilac vertical pair sharing a fine strike of the "nkandhla/zululand" triple-ring rubber datestamp in violet, the reverse with Eshowe (27.2), Durban and G.P.O. Natal (2.3) datestamps; the face panel with tone marks from another envelope, otherwise fine and rare"



<http://www.postmarks.co.za/images/Nkandhla%20%20Zululand%201890.jpg>: “Opened:  
1890-1898 Area: Central PO Type: PO”



<https://cdn.globalauctionplatform.com/c2f540c8-baf6-45ab-a3fa-a54c00b8a125/165c9515-5f51-4022-881b-a5550135ad85/540x360.jpg> “Zululand The Postmarks Nkandhla 1891 (7 Mar.) envelope to Greytown, Natal, bearing 1888 1d. lilac cancelled by a fine strike of the "nkandhla/zululand" triple-ring rubber datestamp in violet, Eshowe (9.3), Durban (10.3), G.P.O. Natal (11.3) and Greytown (11.3) datestamps on reverse; small stain at left and other trivial imperfections though a rare cover.”



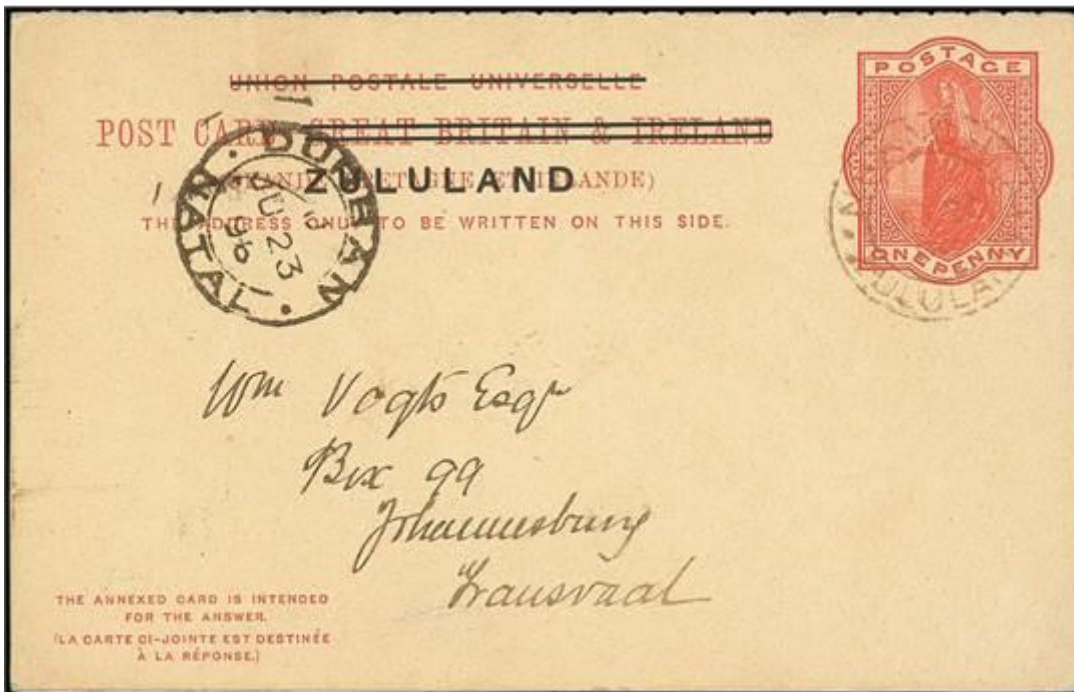
[http://www.stampsoftheworld.co.uk/w/images/0/0e/Nkandhla\\_PM\\_b.jpg](http://www.stampsoftheworld.co.uk/w/images/0/0e/Nkandhla_PM_b.jpg)



<http://www.forpostalhistory.com/images/2931.jpg> “1895 envelope to Aylesbury, England, franked with three 1d's cancelled **NKANDHLA** MR 27 95. On the back of the cover are Durban MR 30 and Aylesbury AP 29 95 transit and arrival cancels. Minor faults at the upper right corner slightly affect the corner stamp, but a very scarce cover from this small Zululand village.”.



<http://www.forpostalhistory.com/images/2917.jpg> "1895 Zululand. 1895 envelope to Aylesbury, England, franked with a pair of 1894 1d's and an 1888 1/2d, paying the 2 1/2d rate, cancelled **NKANDHLA** AP 17 95. On the back of the over are Eshowe AP 19, Durban AP 20 and Aylesbury MY 20 95 transit and arrival cancels. Nkandhla was a small village in the centre of Zululand, a little over 100 miles east of Ladysmith. Mail from Nkandhla is very uncommon".



<https://cdn.globalauctionplatform.com/c2f540c8-baf6-45ab-a3fa-a54c00b8a125/8048f86a-defa-4d26-a5b1-a5550135b1ef/540x360.jpg> "ZululandThe PostmarksNkandhla1896 (20 June) outward half 1d. reply card to Johannesburg, neatly cancelled by "nkandhla/zululand" double-ring datestamp and with

Durban transit datestamp (23.6) alongside, the reverse with Eshowe (22.6) and arrival (24.6) datestamps.”



<https://cdn.globalauctionplatform.com/c2f540c8-baf6-45ab-a3fa-a54c00b8a125/2e762da8-2cc3-4811-b5f0-a5550135b8c9/540x360.jpg> “Zululand The Postmarks Nkandhla 1898 (13 Jan.) envelope registered to Johannesburg, bearing 1894 1/2d. dull mauve and green and 1d. dull mauve and green in combination with Natal 1d. carmine (4), all cancelled by "nkandhla/zululand" double-ring datestamps and with manuscript "R23" in pencil at foot, Nqutu 914.1) and Dundee (15.1) datestamps on reverse. An attractive routing via Nqutu and Durban as opposed to the route via Eshowe.”



<https://cdn.globalauctionplatform.com/c2f540c8-baf6-45ab-a3fa-a54c00b8a125/95cd4b34-0d03-41d7-a03a-a5550135b6d2/540x360.jpgv> “Zululand The Postmarks Nkandhla 1898 (8 Jan.) reply portion of ½d. card, showing shaved "Z" variety, headed "Umhlatuzi Drift" to Point, Durban, cancelled by "nkandhla/zululand" double-ring datestamp, the reverse with Eshowe (10.1), Durban (11.1) and Point (11.1) datestamps; the odd trace of light tones though a rare genuinely used reply section card; also 1888 ½d. vermilion pair with part double-ring datestamp in violet.”

Current information: “Nkandla is a town in the uThungulu district of KwaZulu-Natal, South Africa. It is the seat of the Nkandla Local Municipality, and the district wherein the residence of the current President of South Africa, Jacob Zuma may be found. Contrary to common perception, the residence is not located in the town of Nkandla but may be found some 40 kilometres to the south beyond the Nkandla Forest and on the road to Kranskop”.

<http://www.stampsoftheworld.co.uk/wiki/Nkandhla>

### **Nondweni 28s11 30e49**

<http://www.postmarks.co.za/PH%20Zululand%20Entonjaneni.htm>; “Opened: 1891-1898 Area: West PO Type: PO”



<http://www.michael-hamilton.com/images/ZULU46880.jpg>

<http://www.michael-hamilton.com/images/ZULU46605.jpg>



<https://cdn.globalauctionplatform.com/c2f540c8-baf6-45ab-a3fa-a54c00b8a125/d48cfe20-e93b-4ad4-9232-a5550135bb6b/original.jpg> “Zululand The Postmarks **Nondweni** 1892 (25 Nov.) envelope to Glasgow, bearing 1888 ½d. vermilion and 1891 Natal Postal Fiscal 1d. dull mauve vertical pair sharing a superb strike of the “nondweni/zululand” triple-oval rubber datestamp in violet, the reverse with two different Rorke’s Drift Zululand (25.11), Rorke’s Drift Natal (28.11), G.P.O. Natal (29.11) and Glasgow (26.12) datestamps. An attractive franking with this very rare cancellation”.



<http://www.forpostalhistory.com/images/635.jpg> . “1893

1893 ½d reply paid card (H & G 3) locally used to Isandhlwana, with a very fine strike of the very rare **NONDWENI**, ZULULAND 11 JUN 93 purple oval datestamp, which also cancels the reply half of the card. The message asks when the sender can meet Mr Lurring, the recipient of the card, in

Vryheid. Although there are a few slight traces of foxing, this is probably the finest of the very few known used examples of this card. An item of major importance, Ex Wilson Wong and John Robson collections where it sold for £2860 in 1992. A B.P.A. 1999 certificate accompanies the card.”



<http://www.stamps-of-the-world.co.uk/w/images/thumb/2/24/Nondwenizuluv.jpg/1024px-Nondwenizuluv.jpg>



<https://cdn.globalauctionplatform.com/c2f540c8-baf6-45ab-a3fa-a54c00b8a125/62bfbc5-664d-4944-ad11-a5550135bf7c/540x360.jpg> “Zululand The Postmarks Nondweni 1895 (28 Oct.) envelope to Durban, bearing 1894 1d. dull mauve and carmine neatly cancelled by "nondweni/zululand" double-ring datestamp, the reverse with Dundee (28.10) and Durban (29.10) datestamps”.



<http://www.michael-hamilton.com/images/ZULU45562.jpg> “NONDWENI, Zululand postmark. (Z.9)  
MR 3 96 on QV 1d (SG.21).”



<http://www.stamps-of-the-world.co.uk/w/images/5/51/Nondwenizulu.jpg>

Current information: “Situated in Northern Natal in the far reaches of the Zulu Kingdom”

<http://www.stamps-of-the-world.co.uk/wiki/Nondweni>

### **Nongoma 27s58 31e35**



<http://www.postmarks.co.za/images/Nongoma%201897%202.jpg>: “Opened: 1894-1898 Area: North  
PO Type: PO”



[http://www.stamps-of-the-world.co.uk/w/images/3/30/Nongoma\\_Cover\\_a.jpg](http://www.stamps-of-the-world.co.uk/w/images/3/30/Nongoma_Cover_a.jpg) “South Africa: Zululand: 1898 (Oct. 30) envelope to England franked Natal 1/2d., 1d. (2) tied by two fine strikes of NONGOMA/OCT/30/189- c.d.s in violet, backstamped Melmoth Nov. 1, Eshowe Nov. 2, Durban Nov. 3, Carlisle Nov. 28 arrival and with albino impression of Foster Porter & Co. Ltd. of London on flap”.



<https://cdn.globalauctionplatform.com/c2f540c8-baf6-45ab-a3fa-a54c00b8a125/63b16c8f-1fc6-454e-ac16-a5550135c442/540x360.jpg> “Zululand The Postmarks Nongoma 1896 (22 Oct.) Natal ½d. brown card used by the Standard Bank of South Africa at Pietermaritzburg to Sergeant-Major Bruce at Ubombo, cancelled by G.P.O. Natal double-ring datestamp and showing Durban (23.10) double-ring

datestamp and indistinct rubber datestamp (30.10) in violet, probably Ubombo, below the stamp impression, the reverse with a fine strike of the "nongoma/zululand" rubber datestamp (29.10) in violet and two Melmoth c.d.s. (25.10)”



<http://www.michael-hamilton.com/images/ZULU45528.jpg> : “NONGOMA, Zululand postmark (Z.7) in purple dated 20 MAY 1897 on Natal ovp'd "ZULULAND" QV 1/- REVENUE piece.”

Current information: Nongoma is a town in Zululand, KwaZulu-Natal, South Africa. It is the seat of the Nongoma Local Municipality. It is situated 300 km north of Durban and 56 km from Ulundi; it is surrounded by the Ngome Forest. It is a busy market town that serves a large surrounding area.

The area has four royal palaces belonging to the current Zulu King Goodwill Zwelithini:

- Khethomthandayo Royal Palace — One of his wives lives here.
- Kwakhangelamankengane Royal Palace — His third wife, Princess Queen Mantfombi Dlamini-Zulu lives here.
- Linduzulu Royal Palace — His first wife, Queen MaNdlovu, lives here.
- Enyokeni Royal Palace — Queen MaMchiza lives here, and it is the King's only 'traditional' palace. In early September it is the site of the Umhlanga (Reed Dance).”

<http://www.stampsoftheworld.co.uk/wiki/Nongoma>

## Nqutu 28s13 30e32



[http://www.stampsoftheworld.co.uk/w/images/e/ed/Nqutuzulu\\_mb.jpg](http://www.stampsoftheworld.co.uk/w/images/e/ed/Nqutuzulu_mb.jpg); also

<http://www.postmarks.co.za/images/Nqutu%20manuscript.jpg> : “Opened: 1889-1889 and 1895-1898  
Area: West PO Type: PO”

[http://www.stampsoftheworld.co.uk/w/images/thumb/5/5b/Nqutuzulu\\_mc.jpg/640px-Nqutuzulu\\_mc.jpg](http://www.stampsoftheworld.co.uk/w/images/thumb/5/5b/Nqutuzulu_mc.jpg/640px-Nqutuzulu_mc.jpg)



<https://cdn.globalauctionplatform.com/c2f540c8-baf6-45ab-a3fa-a54c00b8a125/0d0dd748-63d1-4010-9555-a5550135c717/540x360.jpg> “Zululand The Postmarks **Nqutu** 1888 1d. lilac with manuscript "Enqutu 16/12/8(8)", 1888 4d. green and brown tied on piece by manuscript "Nqutu 24-1-89" and with Rorke's Drift Natal datestamp of the same date alongside, and 1888 1d. lilac pair sharing manuscript "Nqutu 28-1-89". A rare trio. Note: When the post office opened in 1888 it did not have a canceller and the postmaster had to cancel the stamps in manuscript. The Resident Magistrate requested a canceller in January 1889, though one did not become available until 1893”.



<https://cdn.globalauctionplatform.com/c2f540c8-baf6-45ab-a3fa-a54c00b8a125/989def82-0409-436d-b0f7-a5550135c974/540x360.jpg> “Zululand The Postmarks **Nqutu** 1889 (14 Apr.) envelope to Stellenbosch, Cape Colony, bearing 1888 1d. lilac (2, one affixed over Transvaal 2d.) sharing manuscript "Enqutu 14.4.89" and with "rorkes-drift/natal" datestamp (15.4) alongside, the reverse with G.P.O. Natal (16.4), Cape Town (22.4) and arrival (22.4) c.d.s.; vertical crease at left and some foxing virtually confined to reverse. The only example of this manuscript cancellation known on cover, and one of the gems of the collection”



<https://cdn.globalauctionplatform.com/c2f540c8-baf6-45ab-a3fa-a54c00b8a125/93be4806-02b2-4f11-bdca-a5550135cb2b/540x360.jpg> “Zululand The Postmarks **Nqutu** 1894 (30 Apr.) envelope to Londonderry, Ireland, bearing 1888 2½d. purple on blue neatly cancelled by "nqutu/zululand" double-ring datestamp, two further despatch, Rorke's Drift Natal (30.4),

G.P.O. Natal (1.5), Durban (1.5) and Port Stewart (23.5) datestamps; three small tone patches on face and fractionally truncated at left”.



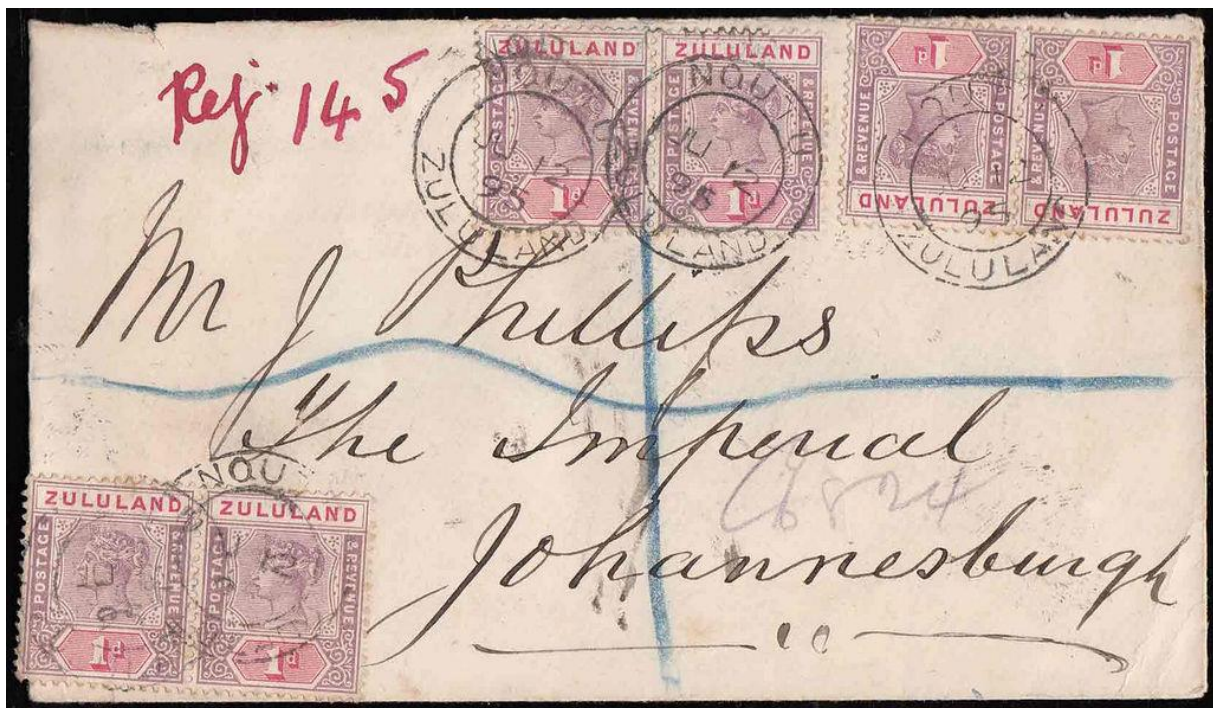
<http://www.michael-hamilton.com/images/ZULU7436.jpg>: “NONDWENI and NQUTU combination, Zululand postmarks purple NONDWENI (Z.4) - JAN 93, fair large part upr. showing DWE lettering with fine fullish NQUTU (Z.9) 15 JA 93 on QV 1d (SG.F1)”.



<https://1887jubileeissue.files.wordpress.com/2013/03/warwick-warwick-zululand-cover.jpg>



<https://cdn.globalauctionplatform.com/c2f540c8-baf6-45ab-a3fa-a54c00b8a125/91b5a7d6-0fb1-4275-ad69-a5550135cfed/540x360.jpg> “Zululand The Postmarks Nqutu 1895 (8 Feb.) Transvaal 1d. red card from Johannesburg to Nondweni, showing Dundee (11.2) and Nqutu (11.2) double-ring datestamps alongside, the reverse with Charlestown, Rorke's Drift Natal and Nondweni datestamps.”



[http://www.stamps-of-the-world.co.uk/w/images/thumb/4/4e/Nqutuzulu\\_cb.jpg/1024px-Nqutuzulu\\_cb.jpg](http://www.stamps-of-the-world.co.uk/w/images/thumb/4/4e/Nqutuzulu_cb.jpg/1024px-Nqutuzulu_cb.jpg) : “1895 Registered cover to the Imperial Hotel, Johannesburg with three

pairs of 1d stamps repaying correct rate with double ring circular handstamp of **NQUTU** date JU 12th, 15 and backs and various frankings.”

Current information: “Nquthu is a town in Umzinyathi District Municipality in the KwaZulu-Natal province of South Africa. Village 24km west-south-west of Barklieside and 53km east of Dundee, KwaZulu-Natal. Of Zulu origin, the name is derived from ingqutu, ‘flat-topped vessel’, descriptive of a nearby hill from which the village takes its name”. <http://www.stamps-of-the-world.co.uk/wiki/Nqutu>

**Ntingwe near 28s37 31e05**



<https://cdn.globalauctionplatform.com/c2f540c8-baf6-45ab-a3fa-a54c00b8a125/eb3bf933-6612-499e-89e6-a5550135d537/540x360.jpg> “Zululand The Postmarks Ntingwe 1896 (Apr.) envelope to England, bearing 1894 1d. dull mauve and red (3) sharing a legible strike of the "ntingwe/zululand" rubber datestamp in violet, the reverse with Nqutu (26.3), Dundee (29.3), Durban (30.3) and Aylesbury (23.5) datestamps; the envelope a little soiled and with minor perimeter imperfections though a very rare cover with only two outgoing covers recorded”.



exceptionally rare cover and one of only two known with this, the rarest Zululand cancellation”.

After 1898 Ntingwe used postmarks of Nkandhla

### **Qudeni 28s35 30e51**



<http://www.postmarks.co.za/images/Qudeni%201897.JPG>: “Opened: 1897-1898 Area: West PO Type: PA”



<https://cdn.globalauctionplatform.com/c2f540c8-baf6-45ab-a3fa-a54c00b8a125/94b0d435-c9b2-43cc-9ad1-a5550135d80b/540x360.jpg> “Zululand The PostmarksQudeni1897 (15 Dec.) envelope registered to Durban, bearing 1894 1d. dull mauve and carmine strip of five and a

single cancelled by three fine strikes of the "post office/qudeni" rubber datestamp in violet and with manuscript "R548" in blue crayon at foot, the reverse with Nkandhla (18.12), Eshowe (20.12) and Durban (21.12) datestamps on reverse; traces of soiling though the sole cover recorded from this remote office".

### Rorke's Drift 28s20 30e32

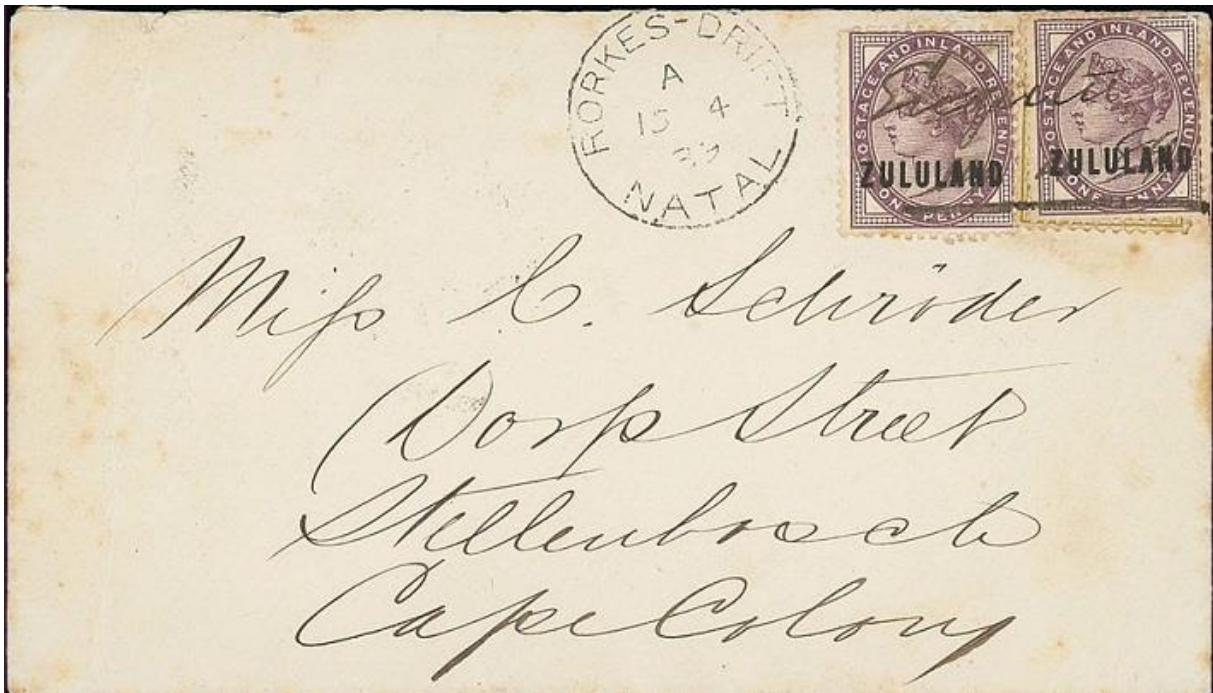


<http://www.postmarks.co.za/images/Rorkes%20Drift%201.jpg>: "Opened: 1889-1898 Area: West PO  
Type: PO"



<https://cdn.globalauctionplatform.com/c2f540c8-baf6-45ab-a3fa-a54c00b8a125/522dc8c7-77d7-4e9a-8f0d-a5550135dc4e/540x360.jpg> "Zululand The PostmarksRorke's Drift 1889 (6 Oct.) envelope to London, bearing 1888 1d. lilac strip of four twice cancelled by fine strikes of the "rorke's drift/zululand" triple-ring rubber datestamp, the reverse with Rorke's Drift Natal single-ring datestamp (8.10), G.P.O. Natal (10.10), Durban (11.10) and London (12.11)

datestamps; faults on flap through opening though a rare and attractive cover paying the correct 4d. overseas per ½oz. postal rate prior to Zululand joining the U.P.U.”



<http://www.postmarks.co.za/images/Nqutu%20Zululand%201889%20cover.jpg>



<https://cdn.globalauctionplatform.com/c2f540c8-baf6-45ab-a3fa-a54c00b8a125/b46b8e25-f580-41bd-a604-a5550135de6c/540x360.jpg> “1891 (11 Oct.) envelope to Londonderry, Ireland, bearing 1888 1d. lilac pair in combination with 1891 Postal Fiscal 1d. dull mauve strip of three cancelled by several "rorke's drift/zululand" double-ring datestamps, the reverse (one corner missing) with a further despatch, Rorke's Drift Natal (13.10) and G.P.O. Natal

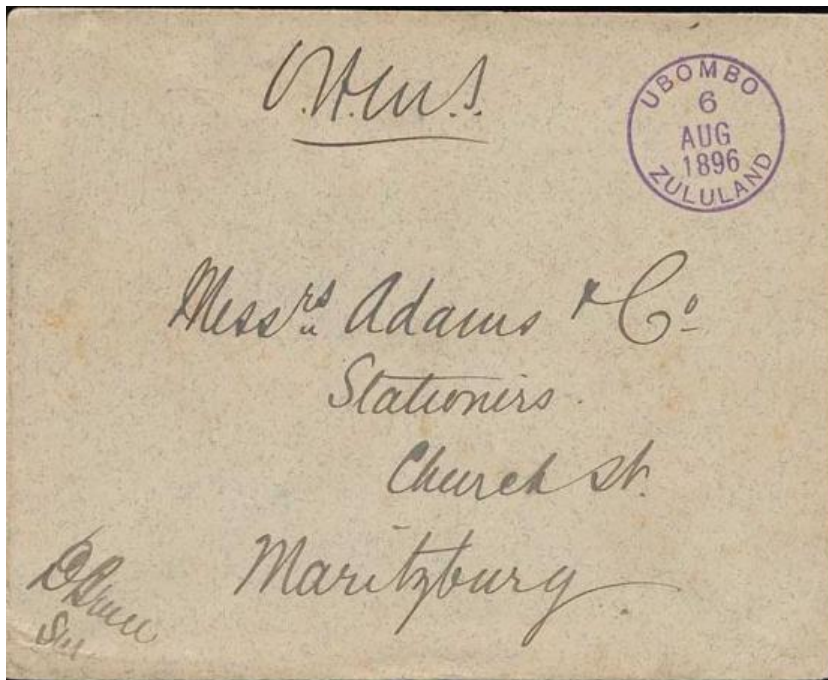
(15.10) datestamps. An attractive mixed issue franking illustrating the shortages of 1d. stamps.”

Historical information `The **Battle of Rorke's Drift**, also known as the **Defence of Rorke's Drift**, was a battle in the **Anglo-Zulu War**. The defence of the **mission station** of Rorke's Drift, under the command of **Lieutenant John Chard** of the **Royal Engineers** and **Lieutenant Gonville Bromhead**, immediately followed the **British Army's** defeat at the **Battle of Isandlwana** on 22 January 1879, and continued into the following day, 23 January.

Just over 150 British and colonial troops successfully defended the garrison against an intense assault by 3,000 to 4,000 **Zulu warriors**. The massive but **piecemeal**<sup>[9]</sup> **Zulu** attacks on Rorke's Drift came very close to defeating the tiny garrison but were ultimately repelled. Eleven **Victoria Crosses** were awarded to the defenders, along with a number of other decorations and honours.`

[https://en.wikipedia.org/wiki/Battle\\_of\\_Rorke%27s\\_Drift](https://en.wikipedia.org/wiki/Battle_of_Rorke%27s_Drift)

### **Ubombo 27s33 32e00**



<http://www.postmarks.co.za/images/Ubombo%20Zululand%20cover.JPG>



<https://cdn.globalauctionplatform.com/c2f540c8-baf6-45ab-a3fa-a54c00b8a125/60e03642-d1ba-4578-b0d0-a5550135e052/540x360.jpg> "Zululand The PostmarksUbombo1896 (13 Sept.) OHMS envelope from Surgeon Major D. Bruce to Pietermaritzburg, showing a fine strike of the "ubombo/zululand" rubber datestamp in violet, the reverse with superb "nongoma/zululand" rubber datestamp (15.9), Melmoth (17.9), Eshowe, Durban and G.P.O. Natal (20.9) datestamps. Very rare"



[http://www.stampsoftheworld.co.uk/w/images/c/c7/Ubombo\\_PM\\_b.jpg](http://www.stampsoftheworld.co.uk/w/images/c/c7/Ubombo_PM_b.jpg)



[http://www.stampsoftheworld.co.uk/w/images/2/25/Ubombo\\_PM\\_a.jpg](http://www.stampsoftheworld.co.uk/w/images/2/25/Ubombo_PM_a.jpg); also:  
<http://www.postmarks.co.za/images/Ubombo%20Zululand.jpg> “Opened: 1895-1898 Area:  
North PO Type: PA”

**Ulundi 28s17 31e26**



[http://www.stampsoftheworld.co.uk/w/images/7/7f/Ulundi\\_b.jpg](http://www.stampsoftheworld.co.uk/w/images/7/7f/Ulundi_b.jpg); also  
<http://www.postmarks.co.za/images/Ulundi%201893.jpg> : “Opened: 1893-1898 Area: Central  
PO Type: PO”



<http://www.stevedrewett.com/images/1492.jpg> “ZULULAND - 1894 1/- green (SG 25) on piece tied **ULUNDI/ZULULAND**.1894-96 1/-green (SG 25) tied to small piece by large part of the scarce d/r **ULUNDI/ZULULAND** cds dated MR.3.95.”

### **Umlalazi 28s56 31e45**



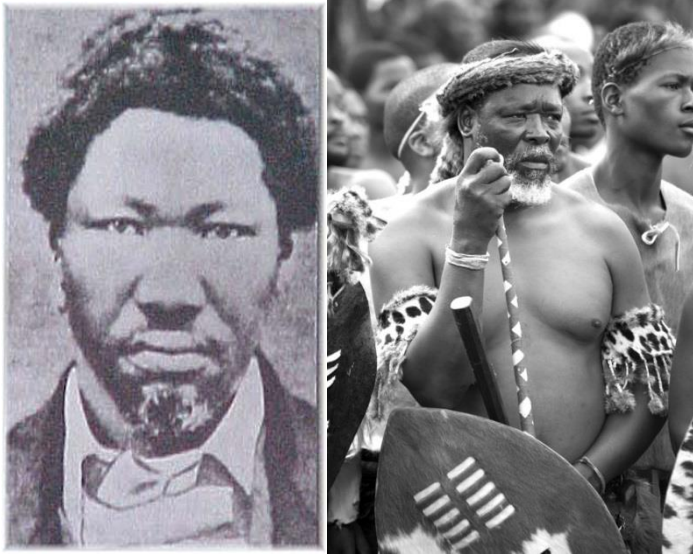
[http://www.stampsoftheworld.co.uk/w/images/thumb/8/89/Umlalazi\\_PM\\_a.jpg/310px-Umlalazi\\_PM\\_a.jpg](http://www.stampsoftheworld.co.uk/w/images/thumb/8/89/Umlalazi_PM_a.jpg/310px-Umlalazi_PM_a.jpg) ; also: <http://www.postmarks.co.za/images/Umlalazi%201888.jpg>:  
“Opened: 1888-1898 Area: Central PO Type: PO “



[http://www.stampsoftheworld.co.uk/w/images/1/1b/Umlalazi\\_PM\\_b.jpg](http://www.stampsoftheworld.co.uk/w/images/1/1b/Umlalazi_PM_b.jpg)

## ***Annex 1 Zulu Kings after 1913***

### **Solomon kaDinuzulu (King: 1913-1933)**



<http://america.pink/images/4/0/9/0/5/3/9/en/2-solomon-kadinuzulu.jpg>

[http://kznheritage.org/wp-content/uploads/bfi\\_thumb/20111210\\_RIH\\_105251-30hg4v18fzxemyk8ah7280.jpg](http://kznheritage.org/wp-content/uploads/bfi_thumb/20111210_RIH_105251-30hg4v18fzxemyk8ah7280.jpg)

Solomon kaDinuzulu (1891–1933) was the king of the Zulu nation from 1913 until his death on 4 March 1933 at Kambi. He was born on the island of St. Helena during the exile there of his father, king Dinuzulu kaCetshwayo.

In conjunction with the ANC he was a founder of the original Inkatha (or Inkatha kaZulu as it was known) in the 1920s. It was mainly formed to act as a rallying point to against Jan Smuts' Native Affairs Bill of 1920.

One of his sisters was Princess Magogo kaDinuzulu, who became famous as a singer of traditional Zulu songs as well as for being the mother of Mangosuthu Buthelezi, leader of the Inkatha Freedom Party (IFP).

He was succeeded by his son Cyprian Bhekuzulu kaSolomon.

[https://en.wikipedia.org/wiki/Solomon\\_kaDinuzulu](https://en.wikipedia.org/wiki/Solomon_kaDinuzulu)

## **Cyprian Bhekuzulu Nyangayezizwe kaSolomon (King: 1948-1968)**



[http://remembered.co.za/sites/default/files/styles/480x360/public/death\\_profile\\_images//Cyprian%20Bhekuzulu%20Nyangayezizwe%20kaSolomon.jpg?itok=2wc1UAd5](http://remembered.co.za/sites/default/files/styles/480x360/public/death_profile_images//Cyprian%20Bhekuzulu%20Nyangayezizwe%20kaSolomon.jpg?itok=2wc1UAd5)

Cyprian Bhekuzulu Nyangayezizwe kaSolomon (August 4, 1924 – September 17, 1968) was the king of the Zulu nation from 1948 until his death at Nongoma in 1968. He succeeded his father, king Solomon kaDinuzulu, after a lengthy succession dispute which was only resolved in 1944. His uncle, Arthur Mshiyeni kaDinuzulu, functioned as regent during the succession dispute and Cyprian's minority.

Cyprian was succeeded by his son, the current (as of 2015) king, Goodwill Zwelethini kaBhekuzulu.

[https://en.wikipedia.org/wiki/Cyprian\\_Bhekuzulu\\_kaSolomon](https://en.wikipedia.org/wiki/Cyprian_Bhekuzulu_kaSolomon)

## **Goodwill Zwelithini kaBhekuzulu (King: 1968-current)**



<http://zuluculture.co.za/wp-content/uploads/2012/08/Ingonyama-Zulu-King-Goodwill-Zwelithini.jpg>

[https://upload.wikimedia.org/wikipedia/commons/thumb/c/c9/King\\_Goodwill\\_Zwelithini.jpg/220px-King\\_Goodwill\\_Zwelithini.jpg](https://upload.wikimedia.org/wikipedia/commons/thumb/c/c9/King_Goodwill_Zwelithini.jpg/220px-King_Goodwill_Zwelithini.jpg)

Goodwill Zwelithini kaBhekuzulu (born 27 July 1948 at Nongoma) is the reigning King of the Zulu nation under the Traditional Leadership clause of South Africa's republican constitution.

He became king on the death of his father, King Cyprian Bhekuzulu kaSolomon, in 1968. Prince Israel Mcwayizeni kaSolomon acted as the regent from 1968 to 1971 while the King took refuge in St. Helena for three years to avoid assassination. After his 21st birthday and his first marriage, Zwelithini was installed as the eighth monarch of the Zulus at a traditional ceremony at Nongoma on 3 December 1971, attended by 20,000 people.

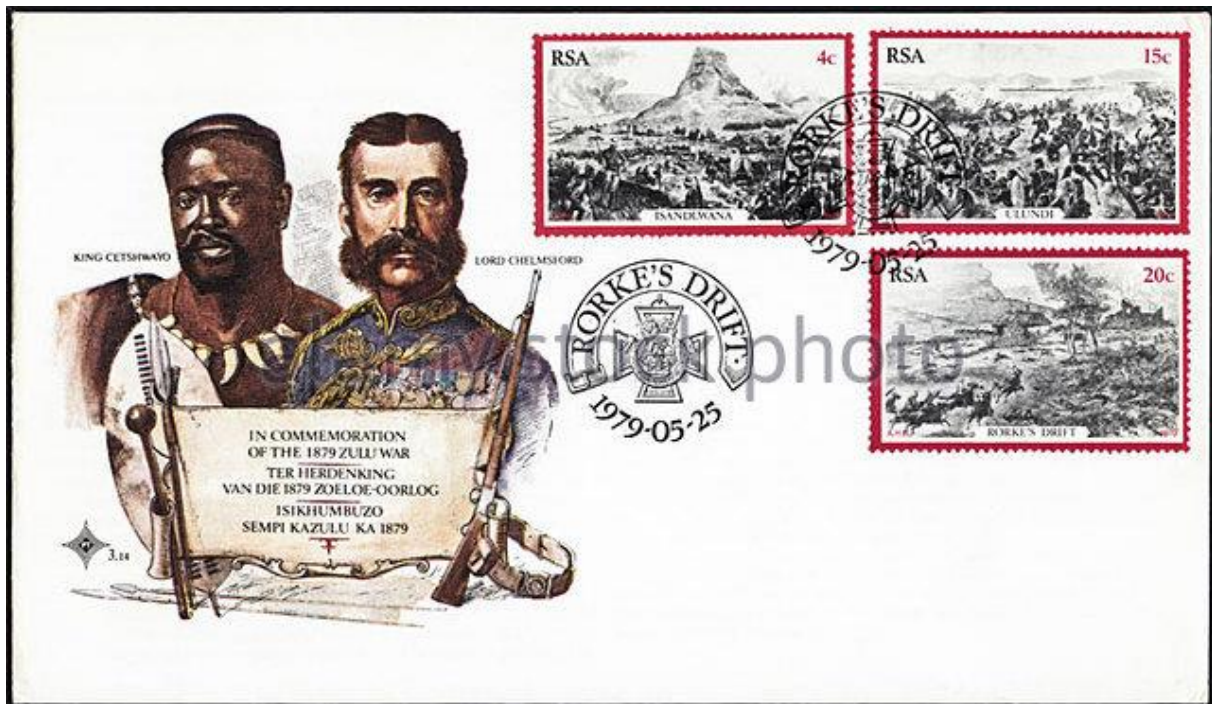
In the power vacuum created in the 1990s as Apartheid and the domination of the country by White South Africans was abolished, the King was sometimes unable to avoid being drawn into partisan politics. The Zulu-dominated Inkatha Freedom Party (IFP) initially opposed parts of the new constitution advocated by the African National Congress (ANC) regarding the internal governance of KwaZulu. In particular, the IFP campaigned aggressively for an autonomous and sovereign Zulu king, as constitutional head of state. As a result, the IFP abstained from registering its party for the 1994 election (a necessity in order to receive votes) in opposition. However, once it became obvious that its efforts were not going to stop the election (the IFP's desired goal), the party was registered. It demonstrated its political strength by taking the majority of the provincial votes for KwaZulu-Natal.

...

As the constitutional monarch of the kingdom of KwaZulu-Natal, he is head of the Ubukhosi, the state-recognized institution of Traditional Leadership that consists of local chiefs. His leadership role also entails chairmanship of the Usuthu Tribal Authority and Nongoma Regional Authority, both established under the provisions of the KwaZulu Amakhosi and Iziphakanyiswa Act. In his address upon the opening of the Provincial Parliament on September 28, 2003, the King advised the government and legislators to give more heed to the Ubukhosi”.

[https://en.wikipedia.org/wiki/Goodwill\\_Zwelithini\\_kaBhekuzulu](https://en.wikipedia.org/wiki/Goodwill_Zwelithini_kaBhekuzulu)

## South African (and other) Stamps with Zulu images



www.alamy.com - DY701P

<http://c7.alamy.com/zooms/f2538aa8fda2460b92b4f02ab9e26b3a/commemorative-first-day-cover-south-africa-rsa-postage-stamps-centenary-dy701p.jpg>



<http://www.routes.co.za/maps/kn/eshowe/eshowe.jpg>



[http://www.stampsoftheworld.co.uk/w/images/2/27/South\\_Africa\\_2003\\_Shaka%2C\\_King\\_of\\_the\\_Zulus\\_a.jpg](http://www.stampsoftheworld.co.uk/w/images/2/27/South_Africa_2003_Shaka%2C_King_of_the_Zulus_a.jpg) “South Africa 2003 Shaka, King of the Zulus”

(Shaka Zulu was the King of the Zulus between 1816 and 1828, and became famous for his struggles with the advancing Boers) .

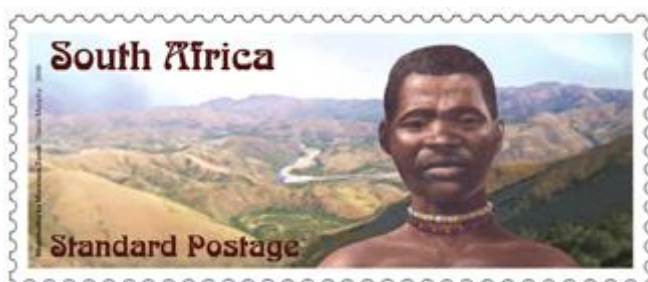


<https://upload.wikimedia.org/wikipedia/commons/7/73/KingShaka.jpg>

His image was also shown on a postage stamp of the Pacific Republic of Palau, issued in 2000.



<https://encrypted-tbn3.gstatic.com/images?q=tbn:ANd9GcRx319WvaV8xPPEmsBY1MmnToGhfIEqdSdS5o-loo5hctzPHnZ>



<http://www.routes.co.za/info/images/bhambathastamp.jpg> (South African Stamp 2006) “In 1906 the Bhambatha Rebellion took place in the Kranskop-Greytown region. The Magistrate of Kranskop, A W Leslie tried to collect taxes from local people, but the Hlongwa tribe of Chief Mtamu refused to pay, after which the men were jailed and each received 25 lashes with the Cat of nine tails. The next group in line who were supposed to pay taxes was the Zondi tribe of Chief Bhambatha (Bhambatha ka Mancinza Zondi)Chief Bhambatha (Bhambatha ka Mancinza Zondi), but he also refused and called his men to war. The Natal Police were sent to calm matters, but a small battles ensued during which 4 policemen were killed and 5 were wounded. Casualties on Bhambatha side are unknown, but a Zulu participant testified that many of them died with neither side winning the battle. Bhambatha was apparently killed during a battle at Mome Gorge. Estimates have been made of about 2'000 Zulu men that were killed. The police force was increased to 240 men. Another skirmish took place on 28 May 1906 with several more people killed. A police contingent of 500 men was sent from Johannesburg. At the ensuing battle near Nkandla, several chiefs were killed. Bhambatha and 24 others were exiled to St Helena Island. Some historians regard Bhambatha as the beginning of more intense resistance against apartheid. The Bhambatha Rebellion of 1906 was the last uprising by indigenous people until Sharpville in 1960. The South African Post Office issues a memorial postal stamp in 2006, commissioned to Denis Murphy. Zulu King Dinizulu (son of Cetshwayo) was implicated in the killing of chiefs who were more loyal to the Europeans during the rebellion and who were killed by him. Dinizulu led the Zulu army against the British during the anglo-Zulu War of 1879. A force of 200 policemen was sent to arrest Dinizulu, but several more people were killed. Then another force of 4000 policemen was mobilised and sent to Nongoma. Dinizulu eventually surrendered, after which he was banished to Rustenburg in the then Transvaal (today in North-West) where he died at the age of 45 on the Farm Uitkyk on October 18th, 1913.”