



Universiteit
Leiden



LeidenGlobal



African Studies Centre Leiden

African Postal Heritage

APH Paper Nr 15, part 7

Ton Dietz

NATAL: POSTMARKS W-Z

Version January 2017

Introduction

Postage stamps and related objects are miniature communication tools, and they tell a story about cultural and political identities and about artistic forms of identity expressions. They are part of the world's material heritage, and part of history. Ever more of this postal heritage becomes available online, published by stamp collectors' organizations, auction houses, commercial stamp shops, online catalogues, and individual collectors. Virtually collecting postage stamps and postal history has recently become a possibility. These working papers about Africa are examples of what can be done. But they are work-in-progress! Everyone who would like to contribute, by sending corrections, additions, and new area studies can do so by sending an email message to the APH editor: Ton Dietz (dietzaj@asc.leidenuniv.nl). You are welcome!

Disclaimer: illustrations and some texts are copied from internet sources that are publicly available. All sources have been mentioned. If there are claims about the copy rights of these sources, please send an email to asc@asc.leidenuniv.nl, and, if requested, those illustrations will be removed from the next version of the working paper concerned.

African Studies Centre Leiden
P.O. Box 9555
2300 RB Leiden
The Netherlands

Telephone	+31-71-5273372
E-mail	asc@asc.leidenuniv.nl
Website	http://www.ascleiden.nl
Facebook	www.facebook.nl/ascleiden
Twitter	www.twitter.com/ascleiden
Countryportal	http://countryportal.ascleiden.nl

Illustrations cover page:

ASC Leiden postage stamp Nederland (2011): ©African Studies Centre Leiden

Cape of Good Hope postage stamp 1853:

http://upload.wikimedia.org/wikipedia/commons/thumb/7/7c/Cape_Triangular_Postage_Stamp.jpg/400px-Cape_Triangular_Postage_Stamp.jpg

Egypt postage stamp 1914:

https://upload.wikimedia.org/wikipedia/commons/4/4b/Post_Stamp_Egypt.jpg

Table of Contents

Part 1

Natal, Postage (and revenue and other) stamps

- Introduction 4
- Natal prior to 1857 8
- Natal 1857 onwards 9

Part 2

Postmarks A-D 99

Part 3

Postmarks E-H 222

Part 4

Postmarks I-M 330

Part 5

Postmarks N-R 437

Part 6

Postmarks S-V 539

Part 7

Postmarks W-Z 630

Natal Postmarks W-Z

Wakefield (Rawthorpe, Umgeni Poort) *near 29s25 29e54 (POA 66)*



<http://www.postmarks.co.za/images/POA%2066.jpg>: "1901 to Union; Near Nottingham; Listed 1903 to 1910"

POA 66: Vlaklaagte 1897-1897, Umhlali River 1900-1900, Wakefield 1903-1910;

<http://www.postmarks.co.za/PH%20Natal%20POA%2066%20to%2080.htm>

After 1910: WAKEFIELD; 31.05.1910 to 01.11.1911; Area: Nottingham (Natal); Renamed to Rawthorpe.

<http://www.postmarks.co.za/PH%20Union%20Waaifontein%20to%20Wakkerstroom.htm>

Wakkerstroom *27s24 30e10 [Transvaal?]*

no records

After 1910: WAKKERSTROOM, 31.05.1910 to Republic ,

<http://www.postmarks.co.za/PH%20Union%20Waaifontein%20to%20Wakkerstroom.htm>



<http://www.postmarks.co.za/images/Wakkerstroom%20transvaal%201921.jpg>

<http://www.postmarks.co.za/images/Wakkerstroom%20transvaal%201927.jpg>

Walkershoek *28s26 29e39*

<http://www.postmarks.co.za/PH%20Natal%20Victoria%20Road%20to%20Weenen.htm>: "1906 to 1906; Near Besters".

After 1910: WALKERSHOEK, 01.12.1912 to 01.12.1917, Area: Ladysmith (Natal).

<http://www.postmarks.co.za/PH%20Union%20Waku%20to%20Warden.htm>

Wallace Town 29s44 30e39 (POA 60)



<http://www.postmarks.co.za/images/POA%2060.jpg>: "1887 to 1892; Renamed Inchanga; Listed 1892"

POA 60: Wallacetown 1892-1892, Glenisle 1901-1903, and Charlestown 1907-1909;

<http://www.postmarks.co.za/PH%20Natal%20POA%2041%20to%2060.htm>



<http://www.postmarks.co.za/images/Wallacetown%201891.jpg>

WANDSBECK

After 1910 16.03.1936 to 16.09.1940, Area: Durban, Renamed to Cowie's Hill.

<http://www.postmarks.co.za/PH%20Union%20Waku%20to%20Warden.htm>

WARNER(S) (BEACH)

After 1910 01.08.1912 to Republic, Area: Durban.

<http://www.postmarks.co.za/PH%20Union%20Wargundy%20to%20Warrendale.htm>

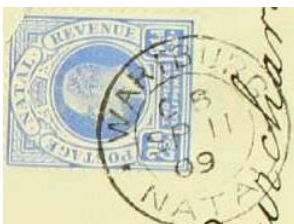


<http://www.postmarks.co.za/images/Warners%20Card.jpg>

Wartburg 29s25 30e35



<http://www.postmarks.co.za/images/Wartburg%201907%20card.jpg> : "1897 to Union; Near Pietermaritzburg"



<http://www.postmarks.co.za/images/Wartburg%20190.jpg>

After 1910: WARTBURG 08.09.1924 to Republic Area: Pietermaritzburg; Renamed from Sandymounts



<http://www.postmarks.co.za/images/Wartburg%201910.JPG>



<http://www.postmarks.co.za/images/Wartburg%201938%20cover.jpg>

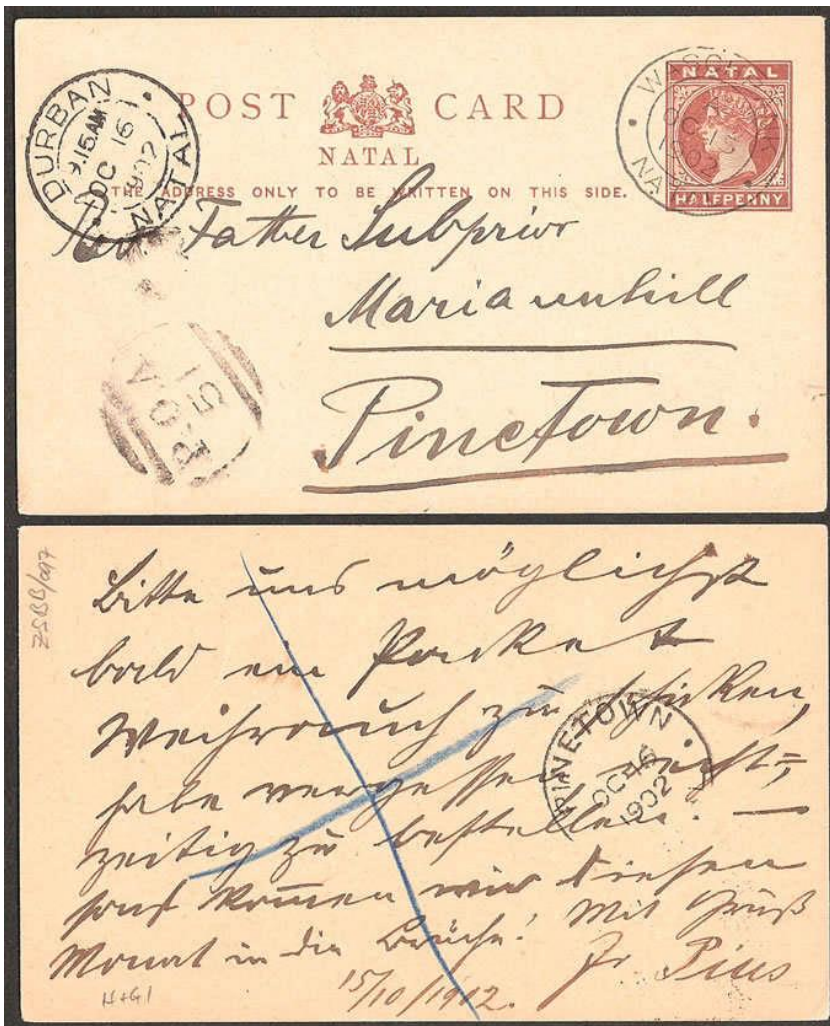
Waschbank/Washbank 28s24 30e05



<http://www.postmarks.co.za/images/Waschbank%201899.jpg>: "1887 to Union;Near Dundee"



<http://www.postmarks.co.za/images/Waschbank%201901%20cover.jpg>



<http://pictures.philasearch.com/A09315/S201509/782.jpg> : "1902 Waschbank via Zuurberg and Durban to Pinetown: QV ½d postcard showing superb despatch cds OC 15 and the transit POA 51 canceller with the Durban cds OC 16. Arrival mark on reverse. VF."

Waschbank Road (Rail) 28s24 30e05 (POA 37 AND POA 83)



<http://www.postmarks.co.za/images/POA%2037.jpg>: "1891 to 1901; Listed 1891 to 1892"

POA37 was used at Waschbank Road 1891-1892, and Ellensdale 1900-1904;
<http://www.postmarks.co.za/PH%20Natal%20POA%2021%20to%2040.htm>



<http://www.postmarks.co.za/images/POA%2083%20cover%201900.jpg>

POA 83: Waschbank Road 1900-1901, Georgedale 1902-1904, Glastonbury 1906-1907, Mayville 1908-1909: <http://www.postmarks.co.za/PH%20Natal%20POA%2081%20to%20100.htm>

After 1910: WASCHBANK (RAIL) (STATION) 31.05.1910 to Republic Area: Ladysmith.

<http://www.postmarks.co.za/PH%20Union%20Warrens%20Camp%20to%20Waterford.htm>



<http://www.postmarks.co.za/images/Waschbank%201910.jpg>

Watermead near 29s47 29e44 (POA 75)



<http://www.postmarks.co.za/images/POA%2075.jpg>: "1900 to 1907"

<http://www.postmarks.co.za/images/POA%2075%202.jpg>

POA 75: Boom Street 1898-1898, Watermead 1902-1902, 1904-1904, Mount Elias 1906-1907, 1910-1910, Fort Louis 1908-1910;

<http://www.postmarks.co.za/PH%20Natal%20POA%2061%20to%2080.htm>



<http://www.postmarks.co.za/images/Watermea..%201904%20Natal.jpg>

After 1910: WATERMEAD, 01.01.1917 to 14.11.1927, Area: Bulwer (Natal).

<http://www.postmarks.co.za/PH%20Union%20Waterkloof%20to%20Wattville.htm>

Waterval near 28s38 31e24 (POA 21)



<http://www.postmarks.co.za/images/POA%2021%20%20pm.jpg>: "1900 to 1907; Near Melmoth; Listed 1899"

POA 21 was used in Nil Desperandum 1891-1892, West End PMB 1895-1897, Waterval 1899-1899, Umzumbi 1900-1904, Umvotipoort 1906-1910;

<http://www.postmarks.co.za/PH%20Natal%20POA%2021%20to%2040.htm>

Weenen 28s57 30e03 (Nr 16)



<http://www.postmarks.co.za/images/Natal%20Number%2016.jpg>: "1852 to Union"

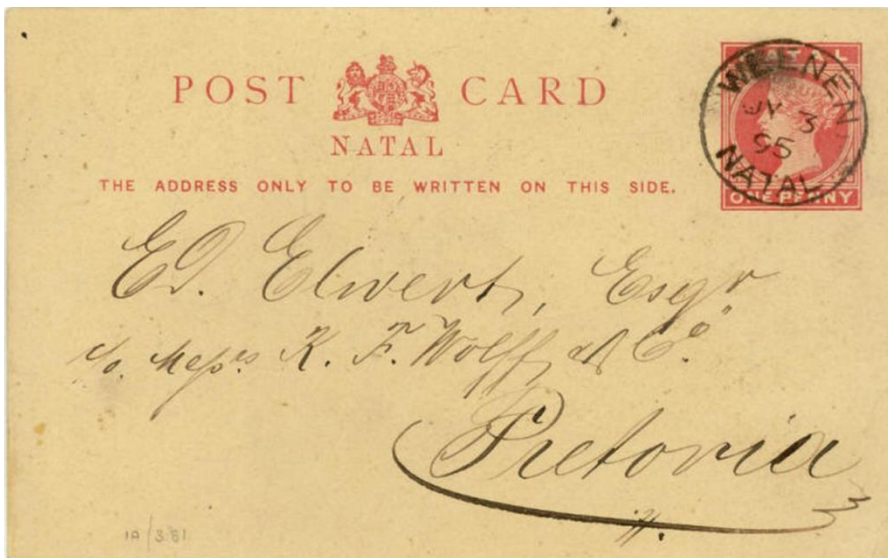


<http://www.michael-hamilton.com/images/NAT54581.jpg> "16 used WEENEN, Natal postmark.(Type G) on QV 1d CA wmk (SG.99a)."

<http://www.michael-hamilton.com/images/NAT4499.jpg> "16 used WEENEN, Natal postmark.(Type G) on QV 6d mauve CA wmk (SG.103)."



<http://www.postmarks.co.za/images/Weenen%201896.JPG>



<http://www.postmarks.co.za/images/Weenen%201895%20cover.jpg>

Welkom 28s31 31e16 ?

1905, no further records

Wessel's Nek 28s37 30e07 (POA 39 and 94)

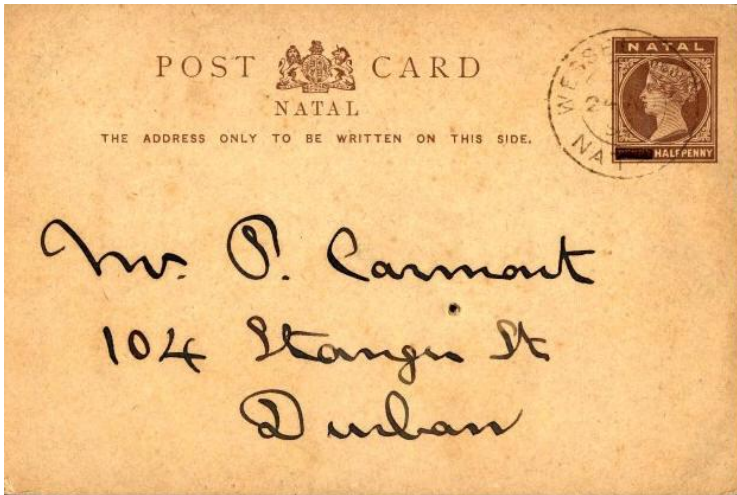


http://images-00.delcampe-static.net/img_large/auction/000/266/373/299_001.jpg



<http://www.postmarks.co.za/images/POA%2039.jpg>: "1891 to Union; Between Ladysmith and Newcastle; Listed 1892"

POA39 was used at Helpmekaar 1891-1891, Wesselsnek Road 1892-1892, Garden Castle 1895-1904, Induduto 1906-1910; <http://www.postmarks.co.za/PH%20Natal%20POA%2021%20to%2040.htm>



<http://www.postmarks.co.za/images/Wesselsnek%20card%201899.jpg>



<http://www.postmarks.co.za/images/POA%2094%20PM.jpg> : "Listed 1900 to 1904"



<http://www.michael-hamilton.com/images/NAT16107.jpg>, POA 94 used 1902 (JA --) BOER WAR, Natal postal history , on QV 1d rate cover to Diyatalawa Camp, Ceylon, b/stamped FE 15 02 arrival.

POA 94 was used at Wesselsnek in 1900-1904;

<http://www.postmarks.co.za/PH%20Natal%20POA%2081%20to%20100.htm>



<http://www.postmarks.co.za/images/Wesselsnek%201910.jpg>

West End Durban near 29s55 31e00

<http://www.postmarks.co.za/PH%20Natal%20Welkom%20to%20Wonderboom.htm>: "1903 to Union"

West End Pietermaritzburg near 28s34 29e45 (POA 21 and POA 14)



<http://www.postmarks.co.za/images/POA%2021%20%20pm.jpg>: "1903 to Union; Listed 1895 to 1897"



<http://www.postmarks.co.za/images/POA%2021%20cover%201895.jpg>

POA 21 was used in Nil Desperandum 1891-1892, West End PMB 1895-1897, Waterval 1899-1899, Umzumbi 1900-1904, Umvotipoort 1906-1910;

<http://www.postmarks.co.za/PH%20Natal%20POA%2021%20to%2040.htm>



<http://thumbs.ebaystatic.com/images/g/KoAAOSwezVWvxLc/s-l225.jpg>



<http://www.postmarks.co.za/images/West%20End%20PMB%201904%20card.jpg>



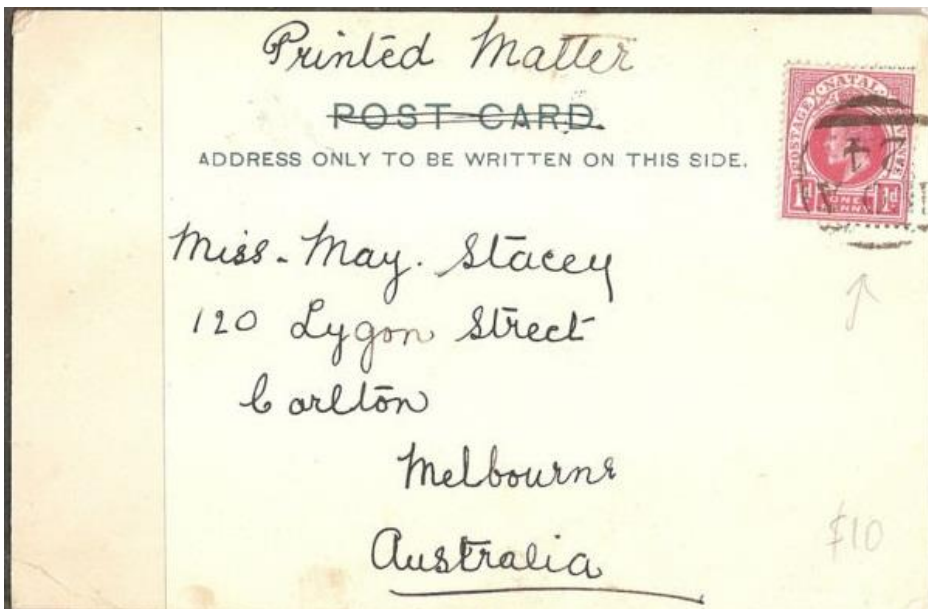
<http://www.postmarks.co.za/images/West%20End%20Pmburg%201909.jpg>



<http://www.postmarks.co.za/images/POA%2014.gif> : "Listed 1910" [should be: 1900]

POA 14 was used at Topomasi 1895-1896, West End PMB, 1900-1900, Bulstrode's Store, 1901-1902, Horton Radford 1907-1909; <http://www.postmarks.co.za/PH%20Natal%20POA.htm>

Westley's near 29s37 30e24 (POA 24)



<http://www.postmarks.co.za/images/POA%2024%20cover%20Westleys%201906.jpg> : "1901 to Union; Pietermaritzburg District; Listed 1903 to 1910"

POA 24 used at Umlaas Bridge 1891-1902, and Westleys 1903-1910;
<http://www.postmarks.co.za/PH%20Natal%20POA%2021%20to%2040.htm>

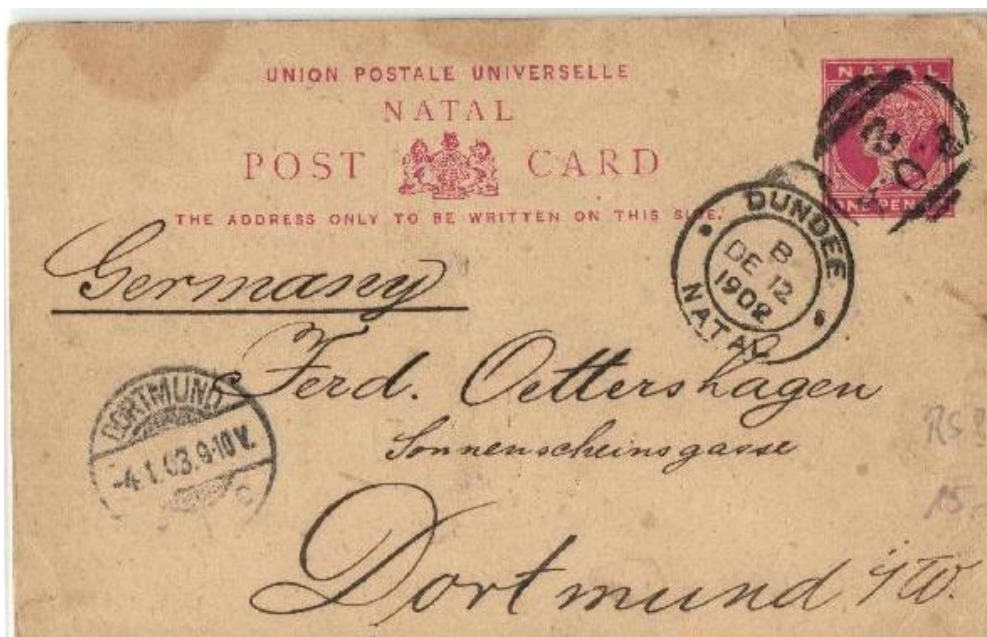
Weston near 29s13 29e50

<http://www.postmarks.co.za/PH%20Natal%20Welkom%20to%20Wonderboom.htm>: "1876 to 1891?; Near Mooi River"

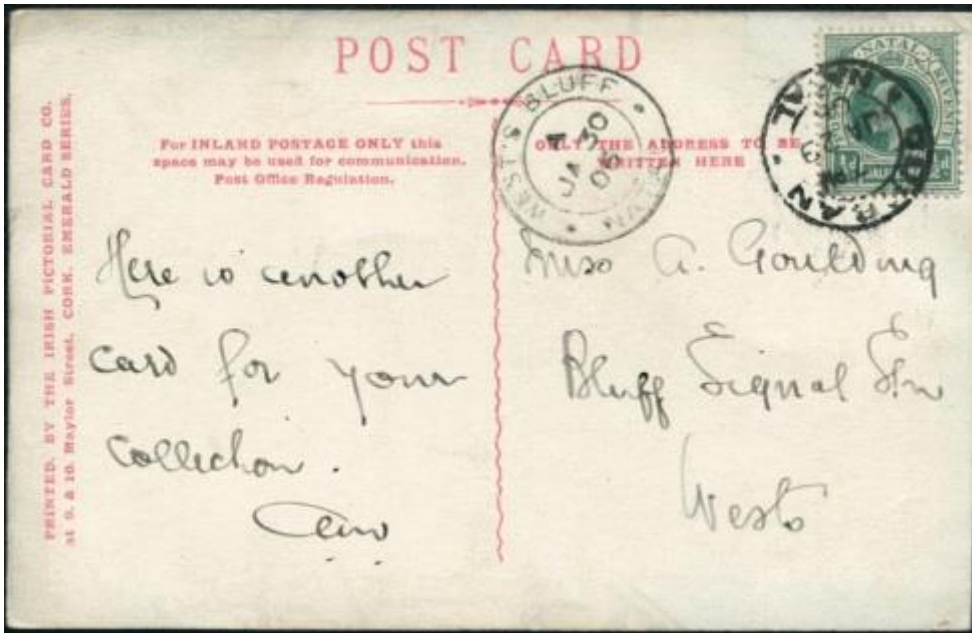
West's Bluff near 29s55 30e56 (POA 2)



<http://www.postmarks.co.za/images/POA%20%20Cover.jpg>: "Used at Wests 12.12.1902 to 26.05.1902 [1903?]"



<http://www.postmarks.co.za/images/POA%20%20cover%201902.jpg>: "Used at Wests"



<http://www.postmarks.co.za/images/wests%20bluff%201906%20card.jpg>: "1900 to 1909; In Durban"



<http://www.michael-hamilton.com/images/NAT23886-1.jpg>: "WEST'S BLUFF, Natal postal history; arrival dated 16 JA 24 on Norway 25 ore rated b/w ppc to The Premier Whaling Co. Ltd."

Westville near 29s52 30e46

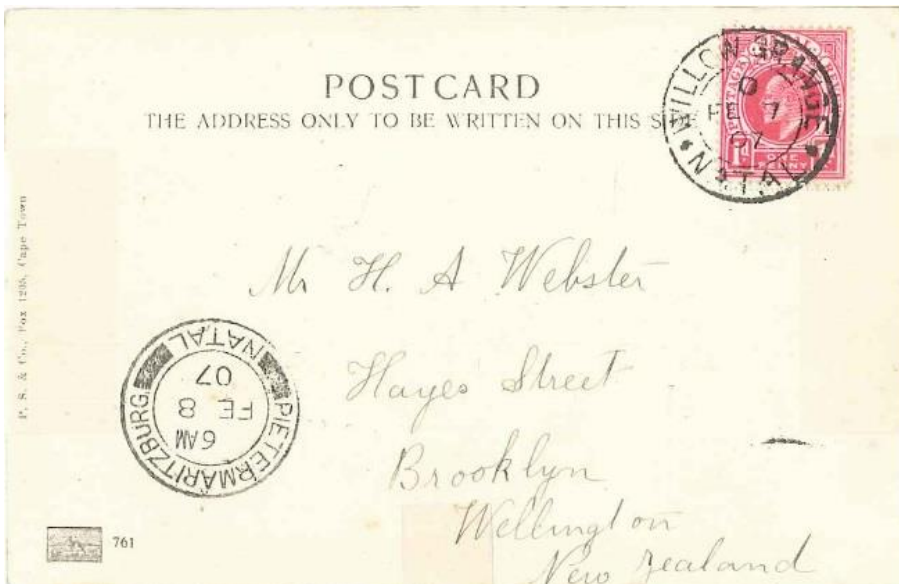
<http://www.postmarks.co.za/PH%20Natal%20Welkom%20to%20Wonderboom.htm>: "1904 to Union; Between Durban and Pinetown"

Wilfontein near 28s34 29e45



<http://www.postmarks.co.za/images/Wilgfontein%201890.jpg>: "1885 to 1902; Near Pietermaritzburg"

Willow Grange 29s03 29e56



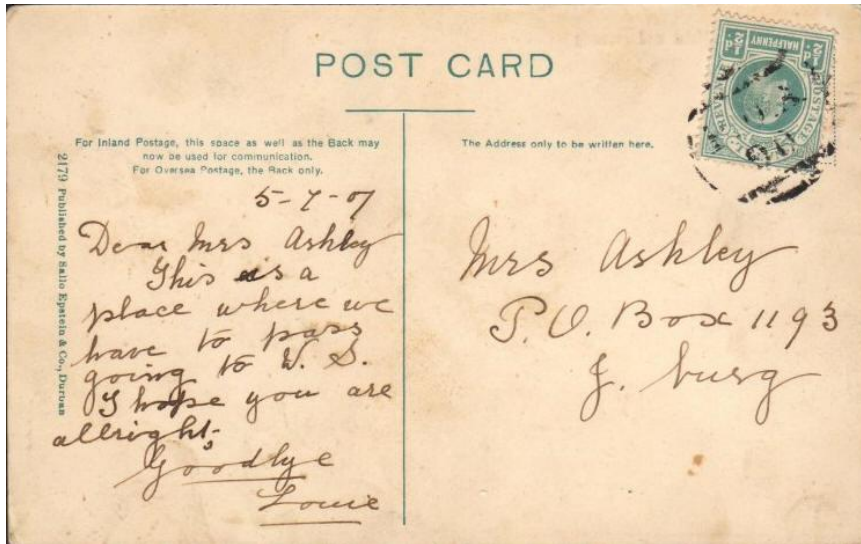
<http://www.postmarks.co.za/images/Willow%20Grange%201907%20card.jpg>: "1885 to Union; Near Estcourt"



<http://www.michael-hamilton.com/images/NAT8671.jpg> : "WILLOW GRANGE, Natal postmark. (M.4.2) dated O/SP 13 09 on C.S.A.R. 1d PARCELS STAMP."

<http://www.michael-hamilton.com/images/NAT8672.jpg> : "WILLOW GRANGE, Natal postmark, (M.4.2) dated O/OC 15 09 on N.G.R. 1/- PARCELS STAMP, perf. faults."

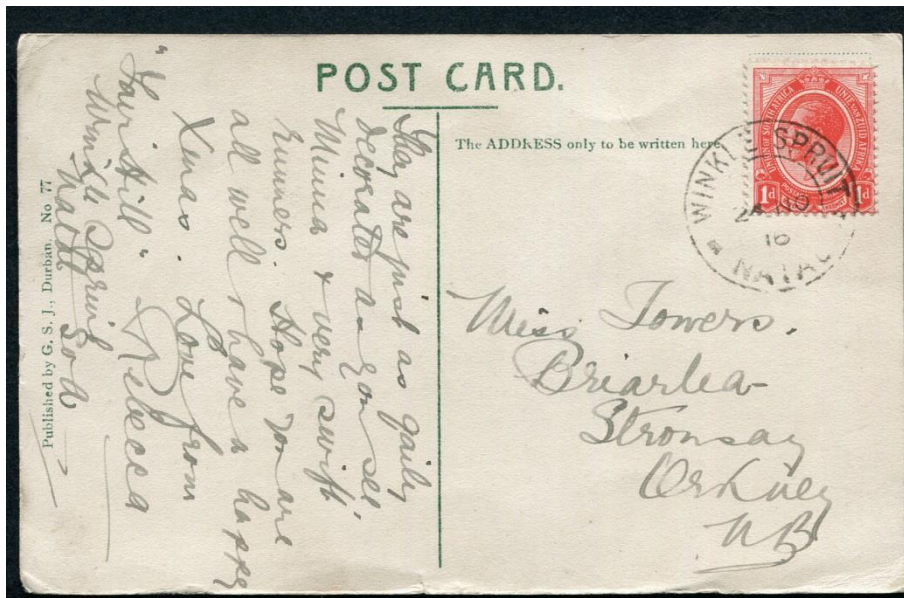
Winkle Spruit/Winkelspruit 30s05 30e50 (POA 90)



<http://www.postmarks.co.za/images/POA%2090%20card.jpg>

POA 90: Penvaan 1900-1900, Dannhauser 1901-1904, Winkelspruit 1906-1910;

<http://www.postmarks.co.za/PH%20Natal%20POA%2081%20to%20100.htm>



[http://i.ebayimg.com/00/s/MTA1NVgxNjAw/z/kHUAASwoydWsgCi/\\$_57.JPG](http://i.ebayimg.com/00/s/MTA1NVgxNjAw/z/kHUAASwoydWsgCi/$_57.JPG)

Winterskloof near 28s34 29e45 (POA 57)



<http://www.postmarks.co.za/images/POA%2057%201906%20Cover%20Hamilton.jpg>

POA 57: Northdene (Railway) 1892-1892, Middlerest 1897-1902, and Winters Kloof 1906-1909;

<http://www.postmarks.co.za/PH%20Natal%20POA%2041%20to%2060.htm>

Winterton 28s46 29e35



<http://www.postmarks.co.za/images/Winterton%201908%20card.jpg>: "1907 to Union; Near Bergville"

Wonderboom near 29s07 30e30 (POA 46)



<http://www.postmarks.co.za/images/POA%2046%20PM.jpg>: "1901 to 01.03.1904; Near Richmond; [POA46] Listed 1902 to 1904"

POA46: Balgowan 1892-1893, Islington 1900-1901, Wonderboom 1902-1904, and Stepmore 1902-1904; <http://www.postmarks.co.za/PH%20Natal%20POA%2041%20to%2060.htm>

Woodcote 28s24 29e54

no records

Woodsite near 28s34 29e45 (Nr 21)



<http://www.postmarks.co.za/images/Natal%20Number%2021.jpg>: "1856 to Union; In Pietermaritzburg"



<http://www.postmarks.co.za/images/Woodside%201903%20Natal.jpg>

Wyford near 28s34 29e45

<http://www.postmarks.co.za/PH%20Natal%20Woodcote%20to%20Zwartkop.htm>: "1905 to Union; Ladysmith District"

York 29s20 30e27 (Nr 10)



<http://www.postmarks.co.za/images/Natal%20Number%2010%20-2.jpg>: "1852 to Union; 6km from Hanover"

https://upload.wikimedia.org/wikipedia/commons/thumb/1/19/Stamp_Natal_1863_1p.jpg/220px-Stamp_Natal_1863_1p.jpg



<http://www.postmarks.co.za/images/Natal%20Number%2010%20York.jpg>



<http://www.postmarks.co.za/images/York%20Natal%20crown%201862.jpg>



<http://www.michael-hamilton.com/images/NAT4489..jpg> "10 used YORK, Natal postmark.(Type G) on QV 4d brown CA wmk (SG.102), badly thinned top left corner area."



<http://www.postmarks.co.za/images/York%201896.JPG>



<http://www.postmarks.co.za/images/York%20Natal%20card.jpg>

Zululand around 28s58 31e29 (nr 56)



<http://www.postmarks.co.za/images/Natal%20shield%2056%202.jpg> , 1876

<http://www.postmarks.co.za/images/Natal%20shield%2056.jpg> , 1877

Zunckel's/Zunkels 28s50 29e23 (POA 36)



<http://www.postmarks.co.za/images/POA%2036.jpg>: "1890 to Union; Estcourt District; Listed 1894"

POA36 was used at Engsheni 1891-1892, Zunkels 1894-1894, Chapel Street 1896-1896, and Hlokozi 1899-1911; <http://www.postmarks.co.za/PH%20Natal%20POA%2021%20to%2040.htm>



<http://www.postmarks.co.za/images/Zunckels%201908%20card.jpg>

After 1910: ZUNCKELS; 31.05.1910 to 15.07.1940; 23.02.1942 to Republic; Area: Winterton (Natal).

<http://www.postmarks.co.za/PH%20Union%20Zonder%20to%20Zuurbraak.htm>



<http://www.postmarks.co.za/images/Zunkels%201913%20card.jpg>

Zungwini 27s34 30e53 Also Zuinguin, near Vrijheid

no records

After 1910 ZUINGUIN (RAIL / STATION); 01.10.1917 to 1952; Area: Vryheid (TVL); Renamed to Zungwini Station. <http://www.postmarks.co.za/PH%20Union%20Zonder%20to%20Zuurbraak.htm>

ZUNGWINI STATION 1952 to Republic; Area: Vryheid (Natal)

<http://www.postmarks.co.za/PH%20Union%20Zonder%20to%20Zuurbraak.htm>

Zuurberg near 30s34 29e58 (POA 51)



<http://www.postmarks.co.za/images/POA%2051%20pm.jpg>: "1898 to 1908; Harding District; Listed 1899 to 1902"

POA51: Charlestown (Rail) 1892-1892, New Scotland 1896-1896, Zuurberg 1899-1902, Marianhill 1903-1909; <http://www.postmarks.co.za/PH%20Natal%20POA%2041%20to%2060.htm>

Zwartfolosi near 27s52 30e38 (POA 89)

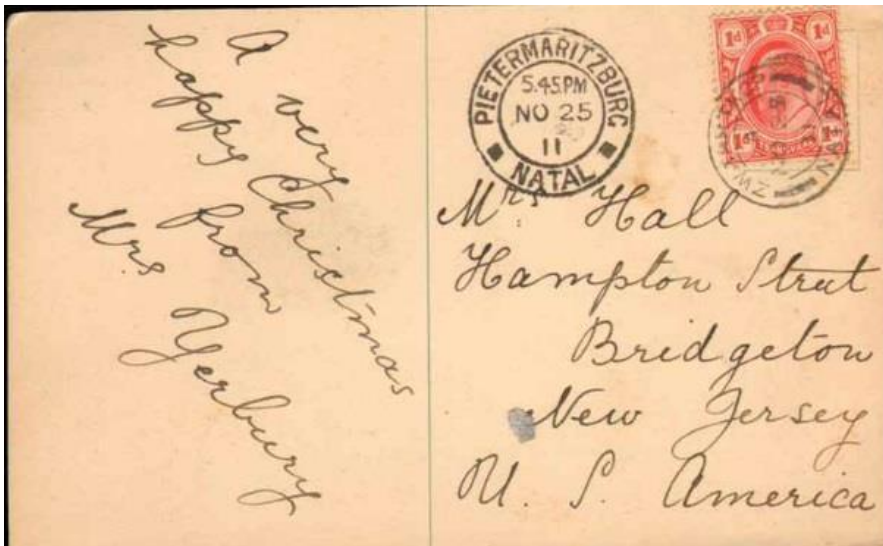


<http://www.postmarks.co.za/images/POA%2089.jpg>: "1903 to Union; 60km from Vryheid; Listed 1906 to 1910"

POA 89: Hattingspruit Rail 1900 – 1902; and Zwartfolosi 1906-1910;

<http://www.postmarks.co.za/PH%20Natal%20POA%2081%20to%20100.htm>

Zwartkop/Zwaartkop near 27s45 30e47



<http://www.postmarks.co.za/images/Zwartkop%20Natal%201911%20card.jpg> : "1885 to Union; 8km from Vryheid"

Zwartkopkloof (Blackridge) ?

no records

Zwartkop Rail near 27s45 30e47 (POA 7)



African Postal Heritage; African Studies Centre Leiden; APH Paper 15 (Part 7); Ton Dietz
South Africa: NATAL POSTMARKS: W - Z

<http://www.postmarks.co.za/images/POA%207.jpg> ; [POA 7 in 1893]

POA7 was used in Addington 1891-1892, Zwartkops Rail, 1893-1893, Underberg 1895-1904, Talavera 1906-1907, and Harts Hill 1908-1909. <http://www.postmarks.co.za/PH%20Natal%20POA.htm>

Annex 1

Postmarks Natal, according to: <http://pbbooks.com/cr36.htm>

British Commonwealth Postmarks NATAL

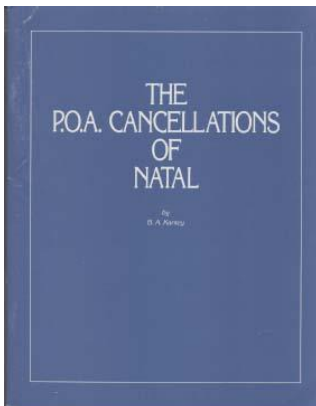
Annexed Zululand December 31, 1897

Annexed Blood River (Utrecht) district, 1902

Annexed New Republic territory [Vryheid] January, 1903

For POA information see:

<http://www.philbansner.com/postalbooks/004175.jpg> : "Natal — Handbooks ISBN #0620058242. Kantey, B. A. THE P.O.A. CANCELLATIONS OF NATAL. Published 1982. Card. 31 p. Shows five covers. Attempts to finalize where/when each of 122 numbers were used. Checklist/w POA #, place name, years recorded in sources quoted, notes."



See for a list: <http://www.postmarks.co.za/PH%20Natal%20POA%20101%20to%20124.htm>

"The post office agency cancellers (POA) make a fascinating study of the post offices agency they were issued to. The POA cancellers were at first issued in 1890 and was in use until 1910. It is difficult to allocate POA cancellers as the same number was issued to several different places. The only sure way of establishing the origin of a POA canceller depends on evidence of an entire which shows the canceller in the correct position cancelling the stamp, but also has a reference in the text.

FOR MORE INFORMATION

The Postal Markings of Natal (W.R.Hart, B.A. Kantey and A. Leslie Leon)"

Annex 2 NATAL: Post office agencies, postmarks and time used

Ton Dietz African Studies Centre Leiden, July 2016

Major source: <http://pbbooks.com/cr36.htm>, but expanded and with corrections.

Abercairney POA28 nr 30s02 29e49	1902-1910	POA 28: 1902-1910
Acton Homes 28s36 29e26 [POA 5]	1884-1910	POA 5: 1901-1903
Adams Mission <i>Nr 1</i> and POA1 30s01 30e49	1881?-1910	POA1: 1892 and 1896
Addington - Durban POA7 near 29s55 31e00	1884-1907	POA7: 1891-1892
Albert 29s30 31e11	1883-1910	
Albert Falls 29s27 30e25	1883-1910	
Alcockspruit POA67 27s55 30e01	1898-1910	POA67: 1898-1910
Alderley POA27 near 29s54 30e08	1900-1910	POA27: 1900-1910
Alexandra Road – PMB near 29s37 30e24	1905-1906	
Alexandra Junction (Kelso Junction)[Durban] POA 106 near 29s55 31e00	1901-1910	POA106: 1902-04
Alfred (see Murchison) 30s33 30e18 ?	no records	
Allendale POA84 29s42 29e72	1900-?	POA84: 1900-01
Alpha 27s43 31e03	1904-1910	
Alverstone near 29s43 30e43	no records	
Amahlongwa POA6 near 30s11 30e47	1899-10	POA6: 1900-10
Amanzimtoti POA8 30s03 30e53	1891-1910	POA8: 1891
Amatikulu POA58 29s09 31e27	1904-10	POA58: 1906-07
Appelsbosch (Kingscliffe) POA50 29s23 30e49	1906-08	POA50: 1906-08
Ashburton Rail 29s40 30e28	no records	
Ashton [POA61] 29s19 31e13	1899-1901	POA61: 1901
Avoca 29s39 31e02	1880-1910	
Avondale Road - Durban near 29s55 31e00	1904-10	
Babanango POA2 28s30 31e00	1902-10	POA2: 1906-10

African Postal Heritage; African Studies Centre Leiden; APH Paper 15 (Part 7); Ton Dietz
South Africa: NATAL POSTMARKS: W - Z

Balgowan POA46 29s25 30e03	1892-1910	POA46: 1892-93
Bangonomo 27s43 31e53	no records	
Batstone 30s42 30e25	1884-1910	POA9: 1892-95
The Beach (Back Beach) - Durban near 29s55 31e00	1909-10	
Beaumont (Powerscourt) 38 30s01 30e37	1861-1910	
Beith near PMB near 29s37 30e24	1887-1903	
Belfort [POA82] 30s10 28e43	1900-10	POA82: 1900-02
Bellair 29s52 30e56	1880-1910	
Berea Road - Durban near 29s55 30e56	1902-10	
Bergville 28s52 29e18	1903-10	
Besters POA19 POA95 28s26 29e39	1891-1910	POA19: 1893 POA95: 1900-01
Biggarsberg POA92 28s17 30e03	1882-1910	POA92: 1900-01
Biggarsberg Junction (Glencoe Junction) POA88 28s10 30e09 ?	1890-91	POA88:
Bingham's Nek near 30s08 30e03	1904-10	
Bisley Road PMB near 29s37 30e24	1907	
Blackburn <i>Nr41</i> 28s57 31e30	1865-1908	
Blackridge Station (Swartskopskloof) 29s36 30e19	No records	
Blackwater POA8 30s31 29e40 ?	1895-1910	POA8: 1895
Blood River 27s53 30e35	1903-10	
Bonds Drift 29s10 31e24	1885	
Boom Street - PMB POA75 near 29s37 30e24	1897-1910	POA75: 1898
Boscobello POA115 27s31 29e54?	1901-10	POA115: 1903-04
Boshoff Street – PMB near 29s37 30e24	1893-1908	
Boshoff's Road POA2 29s33 30e18 ?	1890-95	POA2: 1893
Boston <i>Nr31</i> 29s40 29e5711	1866-1910	
Boston Hill near 29e5711	1861-66	

African Postal Heritage; African Studies Centre Leiden; APH Paper 15 (Part 7); Ton Dietz
South Africa: NATAL POSTMARKS: W - Z

Boston Police Camp near 29e5711	1904-09	
Botha's Hill 29s43 30e37 ?	1880-1910	
Botha's Pass 27s37 29e45	1902-10	
Bowkers (Escombe) POA119 29s52 30e53	1905-10	POA119:1906-10
Braecroft ?/Braemar? 30s57 30e10	1908-10	
Brakwal POA30 POA109 28s23 29e27	1891-1910	POA30: 1893 POA109: 1902
Brickhill Road Durban near 29s55 31e00	1884	
Bridgeford Village (Ottawa) 29s40 31e03	No records	
Broadacre POA12 near 28s11 30e39	1906-07/08	POA12: 1906-08
Broadmore 29s29 30e42 POA 72	1902/06-10	POA72: 1902-04 and 1909-10
Brookes POA 93 near 29s10 29e87	1901-10	POA93:1902-10
Brynbella near Estcourt 29s01 29e52 POA29; POA116	1903-07	POA29: 1903-07 POA116: 1904-07
Buffalo 33 28s03 30e23 ?	No records	
Buffalo River (Tayside Rail) 28s04 30e24	1905-07	
Bulstrode's Store - Durban POA14 near 29s55 31e00	1902-04	POA14: 1901-02
Bulwer 29s47 29e44	1893-1910	
Bungalow ? 29s55 29e30	No records	
Burnside 30s34 29e48	No records	
Bursea (Rockmount) 28s55 30e01	1904-10	
Bushman's River (Estcourt) Nr15 29s01 29e52	1850-68	
Byrnetown (Byrne) Nr48 29s49 30e10	1874-1910	
Camperdown Nr25 29s42 30e33	1853-1910	
Cathkin Nr18 29s01 29e26	unknown	
Cato Manor - Durban POA61 near 29s55 31e00	1902-?	POA61: 1902
Cato Ridge 29s44 30e36	1890	
Caversham (Sterkspruit, Lidgetton) Nr73 29s26 30e05	1853-87	

African Postal Heritage; African Studies Centre Leiden; APH Paper 15 (Part 7); Ton Dietz
South Africa: NATAL POSTMARKS: W - Z

Cedara 29s31 30e16	1903-10	
Ceza POA49 27s58 31e22	1906-10	POA49: 1906-10
Chaka's Kraal 29s26 31e12	1903-10	
Chapel Street – PMB POA 36 near 29s37 30e24	1896-1910	POA36: 1896-97
Charlestown POA51 POA60 POA87 POA96	1891-1910	POA51: 1892
27s24 29e52		POA60: 1897-1909
		POA96: 1901-02
		POA87: 1902-04
Chieveley Rail POA68 28s50 29e49	1892-1910	POA68: 1892
Church Hill Road - Durban near 29s55 31e00	1910	
Clairmont (Clairwood) 29s54 30e58	1892-1910	
Claridge 29s31 30e22	no records	
Clarke Road - Durban near 29s55 31e00	1893-1910	POA18: 1894-96
Cleveland Hill 29s52 30e32 ?	1884-1902	
Coalfields (Talana) POA 3 28s10 30e17	1891-1910	POA3: 1891-92
Coleford POA74 29s58 29e28	1897-1910	POA74: 1898
Colenso <i>Nr17</i> 28s50 29e44	1852-1910	
Colenso Volunteer Camp 28s50 29e44	1904	
Colworth 28s25 29e37?	no records	
Congella POA48 29s52 30e59	1903-10	POA48: 1901-02
Constantia (Constantiadrift) ? Durban	no records	
Near 29s55 31e00		
Corby Rock ? 28s15 30e38	no records	
Creighton POA64 30s01 29e51	1905-10	POA64: 1906-09
Cundycleugh 28s13 29e43	1909?	
Curry's Post <i>Nr53</i> 29s22 30e08	no records <1892 1892-1910	
Dalton (Rail) POA71 29s20 30e40	1900-10	POA71: 1901

African Postal Heritage; African Studies Centre Leiden; APH Paper 15 (Part 7); Ton Dietz
South Africa: NATAL POSTMARKS: W - Z

Dannhauser POA63 POA90 28s04 30s04	1892-1910	POA63: 1892 POA90: 1901-04
The Dargle <i>Nr58</i> 29s20 30e02	1876-1910	
Dargle Road 29s20 30e02	1890-1910	
Darnall POA43 29s23 31e18	188?-190?	POA43: 1900-01
De Waar 28s16 30e22	1882	
Deemount POA97 30s40 29e51	1906-10	POA97: 1906-10
Deepdale 29s48 29e58	1883-1910	
Dejagersdrif POA45 POA112 28s03 30e23	1892-1910	POA45: 1900-01 POA112: 1902
Denny Dalton POA44 28s16 31e13	1904-10	POA44: 1906-10
Dering POA70 29s57 30e34	1900-?	POA70: 1900-02
Dewdrop (Dew Drop Inn) 28s34 29e31	1868-1872; 1882 to ?	
Dingley Dell/Dingly Dale POA6 POA50 POA112 30s25 30e19	1891-97 and 1904-?	POA6: 1891-92 POA50: 1896 POA112: 1906-10
Doesburg POA79 29s18 30e19 ?	1900-?	POA79: 1900-02
Donnybrook 29s53 29e48	1905-?	
Dreifontein/Driefontein POA59 28s20 29e41?	1900-10	POA59: 1908-10
Dronkvlei (Ixopo) 30s09 30e03	1890-19?	
Droogdal POA92 28s06 29e52	1905-10	POA92: 1907-10
Drummond 29s46 30e41	1901-?	
Duff's Road 29s44 30e59	1879-19?	
Dumisa POA13 and 65 30s13 29e43	1891-1902	POA13: 1891-1902 POA65: 1903
Dundee <i>Nr34</i> POA85 28s12 30e16	1968-1910	POA85: 1900-01

African Postal Heritage; African Studies Centre Leiden; APH Paper 15 (Part 7); Ton Dietz
South Africa: NATAL POSTMARKS: W - Z

Dundee Coalfields POA93 near 28s12 30e16	1868-19?	POA93: 1900-01
Durban Nr2 29s55 31e00	1850s-1910	
Durslade POA55 POA56 29s58 30e28	1897-1910	POA55: 1897 POA56: 1898-1910
East End - Durban near 29s55 31e00	1885	
East End - PMB near 29s37 30e24	1897	
East Stranges (Umgodi) POA9 30s15 30e16 ?	1904-10	POA9: 1907-11
Edendale Nr70 POA116 29s39 30e18	1877-1910	POA116: 1906-09
Edwaleni (Punzi) POA 15 near 30s43 30e06	1909-10	POA15: 1909
Ehlanzeni POA43 28s85 30e70	1892-?	POA43: 1892
Ekutandandeni POA62 29s15 31e02 ?	1896-1910	POA62: 1897-98
Ekutuleni ? 28s79 31e42	no records	
Elandskop POA31 29s18 29e41	1900+1904-10	POA31: ?
Elandskraal POA31 28s28 30e32	1898-1910	POA31: 1900-04
Elandslaagte POA 48 28s23 29e56	?-1910	POA48: 1992-93
Elizabeth near Dundee POA38 28s12 30e16	1895-1901	POA38: 1896-1901
Ellensdale POA34 POA37 POA91 27s52 29e49 ?	1900?-10	POA37: 1900-04 POA34: 1905-10 POA91: 1901-02
Emagusheni 30s50 29e35	no records	
Embabane POA110 28s46 30e24	1901-02	POA110: 1902
Embabe (Kwa Mbonambi) 28s36 32e05	no records	
Emfodisweni 30s53 29e31 ?	no records	
Emhlopene ?	no records	
Emkindini ?	no records	
Emoyeni 27s59 32e13	no records	
Empangeni 28s50 31e48	1902-10	

African Postal Heritage; African Studies Centre Leiden; APH Paper 15 (Part 7); Ton Dietz
South Africa: NATAL POSTMARKS: W - Z

Emtonjaneni 28s43 31e29	no records	
Engabeni 30s10 29e30	no records	
Engsheni POA36 Near28s58 31e29	1891-92	POA36: 1891-92
	+1902-10	
Engxogi (Coghlan) 31s39 28e08	no records	
Ennersdale 28s59 29e47	1893-1910	
Enqabeni 30s43 30e01	1893	
Entonjaneni (Mtonajini) 28s35 31e24	(Zululand 1888-'96)	
Entumeni POA12 28s51 31e18	?	POA12: 1900-02
Equeefa 30s20 30e40 ?	?	
Equatsha POA52 near 28s14 31e25	1900?-10	POA52: 1902-10
Eshowe (Camp) POA86 28s58 31e29	1898-1901	1900-01
	(Zululand: 1997-'98)	
Esidumbeni POA 26 POA82 29s28 31e02 ?	1893-1910	POA26: 1893-1902
29s28 31e02 ?		POA82: 1907-10
Esperanza POA111 30s21 30e40	?	POA111: 1901-02
Estcourt (Rail) Nr 15 29s00 29e52	1894-1910	
Etdalaneni near 28s36 31e04	no records	
Fairfield POA5 30s14 30e05	1904-1910	POA5: 1906-1909
Fairview POA10 30s02 29e52	1900-1904	POA10: 1900-04
Fawn Leas POA32 29s21 30e41	1893?-1910	POA32: 1893
Fayles near 28s53 31e28	no records	
Felixton 28s50 31e53	no records	
Ferry Hotel Nr68 28s43 30e26 ?	1881-?	
Finchley (Incalu) POA95 30s16 30e01	1905-10	POA95: 1905-10
Florida Road - Durban near 29s55 31e00	1895-1910	
Fort Buckingham near 29s27 31e12	No records	

African Postal Heritage; African Studies Centre Leiden; APH Paper 15 (Part 7); Ton Dietz
South Africa: NATAL POSTMARKS: W - Z

Fort Louis POA75 28s24 30e56	1908-10	POA75: 1908-10
Fort Nottingham 29s25 29e55	1861-66	
Fort Pearson 29s12 31e26	1884	
Fort Williamson near 29s27 31e12	No records	
Fort Yolland POA73 near 28s50 31e21	1907-10	POA73: 1907-10
Fountain Hall POA102 near 29s13 29e59	1901-?	POA102: 1903-04
Fouriespruit (Camelot)	No records	
Fox Hill <i>Nr65</i> POA65 29s40 30e23 ?	1877-1910	POA65: 1892
Freemans POA47 30s03 30e11 ?	1906-1910	POA47: 1906-10
Frere 28s52 29e47	1886-1910	
Garden Castle POA39 29s46 29e16	1895-?	POA39: 1895-1904
Georgedale POA83 near 29s43 30e34	1901-?	POA83: 1902-04
Gillitt's (Rail) 29s47 30e47	1886-1910	
Gingindhlovo 29s02 31e30	1902-10	
Glastonbury POA83 near 28s18 30e06	1903-09	POA83: 1906-07
Glenbain POA74 near 30s08 30e00	1899-1910	POA74: 1901-02
Glencoe (Junction) POA 88 28s12 30e07	1899-10	POA88: 1900-01
Glendale <i>Nr42</i> 29s22 31e17 ?	1870-1910	
Glengavel near 29s47 29e45	1905-10	
Glenisla/Glenisle POA60 29s55 27e04 ?	1900-10	POA60: 1901-03
Gluckstad 27s57 31e02	No records	
Gobeni/Ngobeni 27s39 31e10	1909-10	
Goedhoek near 27s45 30e47	No records	
Gommamaan 27s50 31e19 ?	1903-10	
Good Hope <i>Nr35</i> POA20 28s55 31e41?	1874-84	POA20: 1906-08
	+1906-08	
Gourton 28s59 29e51 ?	1892-1910	

African Postal Heritage; African Studies Centre Leiden; APH Paper 15 (Part 7); Ton Dietz
South Africa: NATAL POSTMARKS: W - Z

Grahams POA16 near 28s34 29e45	1893-1910	POA16: 1893-1910
Greenvale POA17 29s53 29e51 ?	1893-1910	POA17: 1893-1902
Greenwood Park POA 65 POA107 – Durban near 29s55 31e00	1899-1910	POA65: 1900-02 POA107: 1906-10
Greyling Street (Victoria Road) PMB near 29s37 30e24	1903?	
Greytown <i>Nr11</i> 29s07 30e30	1854-1910	
Greyville POA72 29s50 30e59	1893-1910	POA72: 1893
Groen Vlei 27s28 30e14	no records	
Grootspruit 27s25 30e40	no records	
Groutville 29s25 31e14	1883-1910	
Gum Trees (Steadville) POA31 near 29s20 29e59	1906-10	POA31: 1906-10
Halfway House near 29s00 29e52	1908	
Harburg POA58 29s23 30e44	1897-1910	POA58: 1897-1902
Harden Heights 29s15 30e36	1909-10	
Harding ('s Post) <i>Nr47</i> 30s34 29e58	1873-1910	
Harrison POA85 29s43 30e37	1902-10	POA85: 1902-07
Harts Hill POA7 near 28s43 29e49	1908-1910	POA7: 1908-09
Hattingspruit POA89 28s09 30e11	1898-1910	POA89: 1900-02
Havelock near 29s20 31e17	No records	
Hazeldene POA69 30s29 30e34	1903-10	POA69: 1898-1902 (-05)
Heatherdon POA78 near 29s28 30e01	1900-04	POA78: 1901-04
Hella Hella POA101 29s53 30s07 ?	1903-10	POA101: 1906-10
Helpmekaar POA39 POA87 28s29 30e29	1875-1910	POA39: 1891 POA87: 1900-01
Henley – PMB near 29s37 30e24	no records	
Hermannsburg <i>Nr46</i> 29s03 30e45 ?	1872-1910	
The Hermitage (Emakalbeni) POA32	1907-10	POA32: 1907-10

African Postal Heritage; African Studies Centre Leiden; APH Paper 15 (Part 7); Ton Dietz
South Africa: NATAL POSTMARKS: W - Z

near 29s00 30e47

Heron Vale POA5 near 29s20 30e02	1900-1903	POA5: 1901-03
Highbury POA10 29s51 29e43	1893-96	POA10: 1894-96
	+1901-10	
Highfield POA98 28s58 31e42	1901-10	POA98: 1902-04
Highflats <i>Nr50</i> 30s15 30e11	1874-1910	
Highlands 29s15 31e11	1886-1910	
Hillary 29s52 30e56	1903-10	
Hillcrest POA99 29s37 30e47	1900-10	POA99: 1900-01
Hill Top/Hilltop POA9 30s12 29e31	1897-1910	POA9: 1898-1901
Hillside Rail 28s34 29e42	1904	
Hilton Road 29s35 30e18	1884-1910	
Himeville 29s44 29e31	1901-03	
	+1907-10	
Hlabisa 28s08 31e52	1898-1910	
	(Zululand: 1894-'98)	
Hlobane 27s42 31e00	1908-10	
Hlokozi POA36 30s22 30e16	1884-1910	POA37: 1899-1911
Holmesdale POA10 near 29s13 30e00	1906-10	POA10: 1906-10
Homer 27s41 30e01	no records	
Hopetown (Krantzkop) POA6 28s57 30e52?	1885-99	POA6: 1896-98
[?Krantzkop = Kraanskop 29s00 30e47]		
Horton Redford POA14 near 28s33 29e47	1903-10	POA14: 1907-09
Hosken's (Normanhurst) [POA50] near 29s52 32e16	1897-1903;	POA50: 1898-1902
Houboschrand near Howick: 29s28 30e14	1876-93	
Howick 29s28 30e14 (<i>Nr 13</i>)	1850-1910	
Howick (Rail) (Merrivale) POA61 29s31 30e15	1887-1910	POA61: 1892

African Postal Heritage; African Studies Centre Leiden; APH Paper 15 (Part 7); Ton Dietz
 South Africa: NATAL POSTMARKS: W - Z

Howick General Hospital POA97 near 29s28 30e14	1901	POA97: 1901
Icibini POA77 near 29s38 31e02	1900-10	POA77: 1902-10
Ifafa <i>Nr69</i> 30s27 30e38		
Illovo <i>Nr57</i> 30s05 30e50		
Illovo Rail (POA42) 30s05 30e50	1899-1904?	POA42: 1899-1902
Illovo River near 30s05 30e50	1900	
Imbezane (Fascadale) POA59 near 30s43 30e27	1895-10	POA59: 1896-1902
Imfume 30s06 30e44	no records	
Impendhle 29s35 29e51	1893-1910	
Impolweni Mission Station POA8 29s24 30e27	1904-1910	POA8: 1906-10
Inadi POA42 28s49 30e40	1891-1910	POA42: 1891-92
Inanda (Lindley Mission Station) POA15 29s40 30e56	1887-1910	POA15: 1891-1907
Inchanga 29s44 30e39	unknown	
Induduto POA39 30s10 30e37 ?	1901-10	POA39:1906-10
Ingagane POA16 POA91 27s50 29e58	1882-1910	POA16: 1891-92 POA91: 1900+1902
Ingeli near 30s34 29e53	1890-1910	
Ingogo 27s32 29e56	1893-1910	
Ingogo Rail POA58 POA98 POA105 27s33 29e53	1891-1910	POA58: 1892 POA98: 1900-01 POA105: 1902
Ingwavuma 27s09 32e00	1898-1910 (Zululand: 1895-'98)	
Inhlazatje 28s09 31e14	1892-1910	
Inhluzani (Impendle) 29s35 29e51	no records	
Inkonza near 30s09 30e03	no records	
Insilunga near 28s11 30e47	no records	

African Postal Heritage; African Studies Centre Leiden; APH Paper 15 (Part 7); Ton Dietz
South Africa: NATAL POSTMARKS: W - Z

Insinga/ Inzinga POA31 29s30 29e40	1887-1910	POA31: 1895-96
Insuzi POA15 POA35 29s21 30e55	1891-1910	POA35: 1891-1910 POA15: 1898
Inyanyadu 27s57 30e15	no records	
Inyoni 29s04 31e26	1894-1907	
Inyoni Rail near 29s04 31e26	1902-10	
Ironlatch (Kromhoek) 30s20 29e58	no records	
Isandhlwana 28s48 29e08	1902-10	
Ishotsha location unknown	unknown	
Isipingo <i>Nr8</i> 29s59 30e56	1859-1910	
Isipofu POA4 near 30s18 30e40	1905-10	POA4: 1907/10
Islington POA46; POA122 30s10 29e53	1898-1901	POA46: 1900-1901
30s10 29e54	+1904-10	POA122: 1906-09
Ixopo <i>Nr49</i> 30s08 30e00	1874-1910	
Izingolweni 30s46 30e07	1881-88 + 1908-10	
Jackalspruit location unknown	no records	
Jacobs 29s55 30e58	1901-10	
Joubertsvlei near 29s13 29e50	1890	
Kalabasi POA111 28s03 30e00	1905-10	POA111: 1906-10
Kamberg 29s22 29e46	1898-1910	
Kangela St. – Eshowe 28s58 31e29	1904-10	
Karkloof near 29s29 30e13	no records	
Kearsney <i>Nr45</i> 29s18 31e15	1873-1910	
Keate's Drift 28s51 30e28	no records	
Kershaw's POA27 near 29s20 29e59	1894-98	POA27: 1894-98
Kingsley 27s54 30e31	1908-10	

African Postal Heritage; African Studies Centre Leiden; APH Paper 15 (Part 7); Ton Dietz
South Africa: NATAL POSTMARKS: W - Z

Kingston 30s01 29e08	no records	
Kinira 30s44 29e00	no records	
Klipbank near 27s44 29e55	no records	
Klipkraal POA17 near 29s52 30e46?	1891-92?	POA17: 1891-92
Kobeni (Ngobeni?) 27s39 31e10	1909?	
Kongolona POA74 27s39 31e02?	1904-10	POA74: 1907-10
Krantzkloof (Kraanskloof) POA67 29s46 30e49	1892-1909	POA67: 1892
Krantzkop 29s00 30e47	1899-1910	
Kwa-Mbonambi 28s36 32e05	no records	
Ladysmith (Rail) <i>Nr19</i> 28s34 29e45	1850-1910	
Lands End POA18 31s33 28e36	1891?	POA18: 1891
Langfontein 31s03 26e40 ?	no records	
Leeuwnek near 27s45 30e47	1902-10	
Lenjaneni Drift near 29s13 30e00	1907-09	
Lidgetton 29s25 30e05	1887-1910	
Lilani 29s06 30e50	no records	
Lilienthal POA23 near 29s21 30e41	1901-10	POA23: 1903-10
Little Tugela near 28s50 29e44	no records	
Loskop POA63 28s56 29e37	1902-10	POA63: 1906-07
Loteni POA43 near 29s30 29e40	1900-?	Poa43: 1903-09
Louwsburg POA82 27s37 31e07	1904-10	POA82: 1906-07
Lower Tugela 29s10 31e24	1898-1910	
	(Zululand: 1894-'98)	
Lower Umfolosi near 28s13 31s15	1898-1910	
	(Zululand: 1894-'98)	
Lower Umkomaas (Umkomaas) 30s11 30e47	1899-1910	
Lower Umkomanzi near 30s22 30e33	1863-99	

African Postal Heritage; African Studies Centre Leiden; APH Paper 15 (Part 7); Ton Dietz
 South Africa: NATAL POSTMARKS: W - Z

Luneberg 27s19 30e37	1905?	
Mahlabatini 28s14 31e30	1900-10	
Maitlandfield POA33 near 30s08 30e00	1891-1910	POA33: 1891-1902
Makomerin 30s07 28e34	no records	
Makowe 27s57 32e06	no records	
Malongeni 28s08 30e23	1908-10	
Malvern 29s52 30e54	1886-1910	
Manderston POA71 29s44 30e25 ?	1890-1910	POA71: 1892
Mandileni 30s42 28e48?	No records	
Mapumulo 29s11 31e02	1889-1910	
Maputa (Manguzi) 26s58 32e44	(Zululand: 1894-'98)	
Marburg POA102 30s44 30e26	1900-10	POA102: 1900-02
Marianhill POA51 29s52 30e50	1902-10	POA51: 1903-09
Marine Colliery (South Coast?)	no records	
Mayor's Walk PMB near 29s37 30e24	no records	
Mayville - Durban POA61 POA83 near 29s55 31e00	1901-1910	POA61: 1903-04 POA83: 1908-09
Mehlom(o)nyama POA63; POA12 30s3630e22	1896-1910	POA63: 1899-1904 POA12: 1904 (probably)
Melmoth 28s38 31e24	1896-1910	
Meran [POA1] near 28s18 30e06	1886-1910	POA1 : 1891; 1898 to 1901
Merebank POA73 29s57 30e57	1886-1902	POA73: 1901-02
Metzlefontein 28s03 30e52	no records	
Mfongosi 27s17 32e09	1908-10	
Mhlazatje ?	no records	
Middelberg near 29s00 29e52	no records	
Middelrest POA57 near 29s15 29e59	1897-1902	POA57: 1897-1902

African Postal Heritage; African Studies Centre Leiden; APH Paper 15 (Part 7); Ton Dietz
 South Africa: NATAL POSTMARKS: W - Z

also Middlerest	+1905-09	
Middleton POA19 near 29s00 29e52	1894?-1910	POA19: 1894-1904 and 1910?
Mid Illovo <i>Nr61</i> 29s59 30e25	1870-1910	
Mid Illovo Central 29s52 30e30 ?	1902-10	
Mielietuin POA114 28s52 29e58	1901-10	POA114: 1903-04
Mimosa ?	1904	
Misgunst (Upper Umvoti) POA30 near 29s12 30e35	1894-1910	POA30: 1896-1901
Mispah/Mizpah 29s09 30e37	no records	
Modderspruit POA92 near 28s34 29e45	1899-1904	POA92: 1902-04
Moguntia 30s43 30e06	1892-1908	
Mona (River) POA18 near 28s51 30e05	1903-10	POA18: 1906-09
Monto Bella 29s25 30e48	no records	
Mooi Klip (Gobeni) POA67 27s39 31e09	1907-09/10?	POA67: 1907-10
Mooi Plaatz POA61	1906-1910	POA61: 1906-10
Mooi Rivier (Whipps) <i>Nr14</i> POA97 29s13 29e50	1870-1910?	POA97: 1903-04
Mossdale POA6 27s59 29e54	1898-1910	POA6: 1899
Mount Edgecombe 29s41 31e01	1880-1910	
Mount Elias POA75 29s16 30e45	1903-10	POA75: 1906-07+1910
Mount Fletcher 30s41 28e30	no records	
Mount Frere 30s54 29e00	no records	
Mount Moorland <i>Nr43</i> 29s35 31e05 ?	1873-? +1903-?	
Mount Moriah 63 28s53 30e22 ?	1877-1910	
Mount Ngwibi 27s47 31e03	no records	
Mount Prospect <i>Nr71</i> POA104 27s29 29e53	1877-? + 1897-1910	POA104: 1902
Mpofana 28s52 30e32	No records	

African Postal Heritage; African Studies Centre Leiden; APH Paper 15 (Part 7); Ton Dietz
 South Africa: NATAL POSTMARKS: W - Z

Mseleni 27s23 32e32	No records	
Mtunzini 28s57 31e46	1907-10	
Muden POA44 28s57 30e22	1895-1910	POA44: 1895-1902
Muller's Pass POA19 27s51 29e41	1901-10	POA19: 1907-10
Munster 30s58 30e14	no records	
Murchison <i>Nr39</i> 30s47 30e11 ?	1869-?	
	1896-1910	
Murchison Police Camp POA42 POA43	1893-95?	POA 43: 1893-95?
Near 30s47 30e11 ?	+1906-10	POA42: 1906-10
Musgrave Road - Durban <i>Nr67</i> near 29s55 31e00	1878-1910	
Ncwadi ?	no records	
Ndumo/Ndumu POA76 27s56 32e16	1904-10	POA76: 1904-10
Ndwandwe (Nongoma) 27s58 31e35	1998-99	POA63: 1898
POA63 27s58 31e35	(Zululand: 1894-'99)	
Ndwedwe POA41 POA63 29s31 30e57	1894-1910	POA63: 1894-96
		POA41: 1905-10
Nellie Valley POA106 27s53 30e12	1904-10	POA106: 1906-10
Nelsrust 29s46 30e22	1907-10	
Newcastle <i>Nr20</i> POA54 27s45 29e55	1864-1910	POA54: 1896-1903
Newcastle Rail near 27s45 29e55	1902-10	
New Germany near 29s45 30e49	1883-1910	
New Guelderland <i>Nr44</i> 29s18 31e19	1872-89	
	+ 1899-1910	
New Hanover <i>Nr26</i> POA72 29s28 30e28	1873-1910	POA72: 1901
New Hanover Rail near 29s28 30e28	1901-10	
New Leeds <i>Nr52</i> near 29s44 30e25	1874-1910	
New Scotland - PMB POA51 near 29s37 30e24	1896-1904	POA51: 1896

African Postal Heritage; African Studies Centre Leiden; APH Paper 15 (Part 7); Ton Dietz
 South Africa: NATAL POSTMARKS: W - Z

Ngobevu POA20 28s50 30e40 Tugela Goldfields	1891-1910	POA20: 1891-92
Ngomo -e? 27s51 31e22	no records	
Ngotshe 27s28 31e16	1904	
Nieuw Smitsdorp ?	no records	
Nieuwjaarsfontein HQ Richmond Cape?	no records	
Nil Desperandum POA21 near 30s22 30e33	1891-92?	POA21: 1891-92
Nkandhla 28s37 31e05	1898-1910	
	(Zululand: 1890-'94)	
Nkwaleni POA79 28s45 31e33	1907-10	POA79: 1907-10
Nondweni 28s11 30e49	1898-1910	
	(Zululand 1891-'98)	
Nongoma 27s58 31e35	1898-1910	
	(Zululand: 1894-'98; but as Ndwandwe <1894)	
Nonoti (Doornkop) POA71 29s13 31e23 ?	1896-10	POA71: 1898
Noodsberg Nr32 29s19 30e52?	1864-1910	
Noodsberg Road (Schroeder's Rail) POA76 and 80	1894-?	POA76: 1899
29s22 30e32		POA80: 1902-04
Normandien POA113 27s58 29e46	1881-1910	POA113: 1902
Normanhurst (Boston) POA50 29s40 29e57	1902-1910	POA50: 1903-04
Northcote ?	no records	
Northdene near 29s55 30e56	1890-1910	
Northdene R.S. POA57 near 29s55 30e56	1892-1910?	POA57: 1892
North End - Ladysmith POA8 near 28s34 29e45	1899-1900	POA8: 1899
North Shepstone (South Shepstone) POA30	1902-07	POA30: 1902-04
Near 30s44 30e28		
Nottingham Nr23 29s25 29e54	1866-1910	
Nottingham Road 29s20 29e59	1880-1910	

African Postal Heritage; African Studies Centre Leiden; APH Paper 15 (Part 7); Ton Dietz
South Africa: NATAL POSTMARKS: W - Z

Nqutu POA86 28s13 30e32	1898-1910	POA86: 1898-1901 (Zululand: 1889; 1895-98)
Nqutu Road near 28s13 30e32	1904	
Ntabankulu (Veredale) near 27s52 30e38	1910	
Ntingwe (in Zululand) near 28s37 31e05	Zululand: 1896-98; no longer as Natal	
Nyalisa ?	no records	
Obanjeni 28s54 31e41	1899-1905	
Olivefontein POA84 near 29s07 30e30	1900-1910	POA84: 1902-07
Oliver's Hoek (Ennersdale) 28s59 29e47?	No records	
Olivershoek Road 28s59 29e47?	1890-1910	
Ondersbrook Spruit (Rosboom) POA11 28s37 29e43?	1885-1910	POA11: 1896-1910
Ongeye (Ungoye) 28s52 31e43	no records	
O'Oboop ?	no records	
Oribi Flats ?	no records	
Ottawa Rail POA40 POA73 29s40 31e01	1886-1910	POA40: 1891 POA73: 1892
Otto's Bluff/Ottos Bluff 29s31 30e22	1903-10	
Overport - Durban POA100 near 29s55 31e00	1900-01	POA100: 1900-01
Paddock Rail 30s45 30e15	no records	
Palmerton Nr59 31s18 29e28	1875-78	
Palmiet POA15 29s48 30e53 ?	1908	POA15: 1908
Park Rynie R.O. POA76 30s25 30e35	1898-1903?	POA76: 1900-01 (-03?)
Paul Pietersdorp (-burg) 27s30 30e51	1902-10	
Pentrich near PMB near 29s37 30e24	1908-10	
Penvaan POA86 POA90 near 27s45 30e47	1900?/1903-10	POA90: 1900 POA86: 1906-10
Pepworth 28s29 29e51	1904-10	

African Postal Heritage; African Studies Centre Leiden; APH Paper 15 (Part 7); Ton Dietz
South Africa: NATAL POSTMARKS: W - Z

Phoenix (Rail) POA45 29s43 31e01	1891-1910	POA45: 1891-93
Piet Retief 27s01 30e50	no records	
Pietermaritzburg <i>Nr1</i> and 'G.P.O.'" 28s34 29e45	1850s-1910	
Pieters(e) POA47 POA77 28s40 29e50	1892-1910	POA47: 1892
Pieters Rail POA77	?	POA77: 1900-01
Pinetown <i>Nr6</i> 29s52 30e46	1850-1910	
Pinetown Bridge (Sarnia) POA80 near 29s52 30e46	1900-09	POA80: 1900-01
Point - Durban <i>Nr5</i> 29s51 31e03 near 29s55 31e00	1862-1910	
Polela (Bulwer) 29s49 29e45	1885-93	
Port Shepstone (Rail) 30s44 30e28	1885-10	
Prestbury – PMB near 29s37 30e24	1905-10	
Punzi 30s50 30e03	no records	
Qudeni POA8 and 115 28s35 30e51	1899-1910	POA8: 1901-04
	(Zululand: 1897-98)	
Queens Bridge - Durban (Umgeni) <i>Nr40</i> near 29s55 31e00	1869-84	
Red Hill - Durban POA29 and POA 115 29s45 31e00	1904-10	POA29: 1908-09 POA115: ?
Reunion 29s57 30e55	1895-1910	
Richenau/Reichenau near 29s47 29e30	1904	
Richmond <i>Nr12</i> 29s54 30e08	1850-1910	
Richmond Road 29s54 30e08	1882-98	
Richmond Rail 29s54 30e08	1902-10	
Riet Valley POA49 29s39 31e01 ?	1892-1904?	POA49: 1892-1904
Riet Vlei (Cedara) <i>Nr28</i> 30s29 29e51	1864-1910	
Rivenhall POA58 27s52 29e49	1885-93	POA58: 1906-10
	+ 1906-10	

African Postal Heritage; African Studies Centre Leiden; APH Paper 15 (Part 7); Ton Dietz
South Africa: NATAL POSTMARKS: W - Z

Roberts ?	1890	
Rockmount near 29s25 29e54	1902-04	
Rockvale POA68 near 30s08 30e00	1896-1910	POA68: 1898-1910
Rooikop (Sydenham) 29s49 30e58	no records	
Rorke's Drift POA108 28s20 30e32	1883-1910	POA108: 1902 (Zululand 1889-1898)
Rosebank POA41 near 29s54 30e08	1891-1910	POA41: 1891-1902
Roseglen (Glen Lyon) ?	no records	
Rosetta POA59 29s17 29e58	1897-1910	POA59: 1906-10
Russel Street- Durban POA3 POA31 near 29s55 31e00	1884-92; 1900-08	POA31: 1891-92 POA3: 1900-02
Rustverwacht POA97? 27s25 30e05?	1908-10	POA97:?
St. Augustine's POA55 28s15 30e33	1901-10	POA55: 1901-02
St. Faith's POA64 30s30 30e12	1903-10	POA64: 1900-04
Salem POA4 30s38 29e54	1897-10	POA4: 1898-1906
Salt Lake ?	no records	
Saltpan ?	no records	
Sarnia 29s50 30e52	1909-10	
Scheepersnek 27s47 30e44	No records	
Schroeders 29s22 30e32	1904-10	
Scotston POA34 near 29s47 29e44	1891-1904	POA34: 1891-1904
Scott(s)burg POA71 POA95 30s19 30e40	1901-10	POA71: 1903-04 POA95: 1902-04
Scottsville – PMB near 29s37 30e24	no records	
Sea View POA99 29s53 30e57	1901-10	POA99: 1901-04
Seaview Station 29s53 30e57	1903	
Seven Oaks Nr27 29s12 30e35	1865-1907	

African Postal Heritage; African Studies Centre Leiden; APH Paper 15 (Part 7); Ton Dietz
South Africa: NATAL POSTMARKS: W - Z

Shafton (G)range POA12 near 29s28 30e14	1899-1910	POA12: 1899
Silutshana 28s22 30e47	no records	
Single Tree POA91 29s18 30e52	1904-10	POA91: 1906-08
Singuasi 29s27 31°45 Nr24	no records	
Siteku (Ekutuleni) 28s41 31e24	no records	
Somkele 28s18 32e05	1903-10	
South Coast Junction - Durban (Rossburgh) 29s55 31e00	1895-1910	
South Downs POA40 29s10 29e50	1894-1910	POA40: 1894-1910
Spionkop POA32 POA69 28s41 29e33?	1898-1910	POA32: 1899-1904 POA69:
Spitzkop POA22 near 27s45 29e55	1891-1901?	POA22: 1891-1901
Spring Grange Nr66 near 29s52 30e46	1875-1904	
Springfield POA81 29s48 30e59	1879-1907	POA81: 1900-04
Springvale Nr29 near 29s54 30e08	1870-1910	
Spudeni (Sibudeni) POA33 POA65 near 28s58 31e29	1903-1910	POA65: 1906-10 POA33: 1907-09
Stafford's Post Nr63 30s30 29e44	1877-87	
Stamford Hill - Durban ? near 29s55 31e00	1881-1910	
<i>Standerton British Army Post Natal Field Force in Transvaal during the Boer War 1899-1902</i>		
Stanger Nr51 and 72? 29s27 31e14	1874-1910	
Stanger Rail 29s27 31e14	1909?	
Steelpoort Nr36	no records	
Stendal POA30 POA84 28s45 30e05	1905-1910	POA84: 1908-09 POA30:
Stepmore POA46 near 29s44 29e31	1898-1910	POA46: 1902-04
Sterk Spruit (Lidgetton) Nr22 29s25 30e05	1853-77	

African Postal Heritage; African Studies Centre Leiden; APH Paper 15 (Part 7); Ton Dietz
South Africa: NATAL POSTMARKS: W - Z

Stirling POA4 near 29s37 30e16	1891-97	POA4: 1891-97
Subeni POA64 near 27s52 30e38	1909?	POA64: 1909
Sunday's River Bridge POA88 near 28s34 29e45	1884-04	POA88: 1902-04
Sunkel's Drift POA3 27s17 30e40	1903-10	POA3: 1903-10
Sutherlands POA117 near 28s34 29e45	1904-10	POA117: 1906-10
Sweet Waters POA109 near 29s35 30e18	1905-09?	POA109: 1905-09
Sydenham - Durban <i>Nr60</i> near 29s55 31e00	1877-1910	
Sydenham Indian Office POA100 near 29s55 31e00	1877-1910	POA100: 1902-10
Tabanhlope POA23 29s05 29e35	1899-1910	POA23: 1900-02
Table Mountain Mission POA18 near 29s44 30e36	1896-1904	POA18: 1898-1904
Tafamasi POA81 near 29s45 31e02	1894-1910	POA81: 1906-1908
Talana 28s08 30e15 ?	1901-10	
Talavera POA7 29s16 30e20	?	POA7: 1906-07
Taylor's (Camp) 29s40 30e10	1905-10	
Taylor's Post near 30s15 30e42	1884-87	
Thompson POA18 30s22 30e33	1892-93	POA18: 1892
Thompson's (Christmas Vale) 30s22 30e33	1892-93	
Thornville near 28s34 29e45	no records	
Thornville Junction <i>Nr64</i> 29s43 30e22	1877-1907	
Thornybush near 28s34 29e45	1898-1910	
Tinley Manor POA80 near 29s27 31e14	1906-10	POA80: 1906-10
Tongaat <i>Nr9</i> 29s37 31e03	1863-1910	
Topomasi POA14 near 29s44 30e36	1895-1904	POA14: 1895-96
Tugela (Colenso) 28s50 29e44	No records	
Tugela Ferry POA2 POA101 28s44 30e27	1894-1910	POA2: 1894-98 POA101: 1900+1904

African Postal Heritage; African Studies Centre Leiden; APH Paper 15 (Part 7); Ton Dietz
South Africa: NATAL POSTMARKS: W - Z

Tweedie/Howick North 29s28 30e14	no records	
Ubombo 27s33 32e00	1898-1910	
		(Zululand 1895-98)
Uitkomst near 29s44 30e36	1883	
Uitzien 29s04 30e05	no records	
Ulundi POA23 28s17 31e26	1898-1901	POA23: 1891-1901
		(Zululand: 1891-98)
Umbilo - Durban near 29s55 31e00	1887-1910	
Umbogintwini 30s00 30e58	1902-10	
Umbulwana Rail near 28s34 29e45	no records	
Umbumbulu (Odidini) POA121 30s01 30e40	1900-10	POA121: 1906-10
Umfolosi [POA28?] 28s30 32e10	1904-1910	POA28 in 1904?
Umgeni (Village) - Durban near 29s55 31e00	1884-1910	
Umhlali <i>Nr4</i> 29s27 31e12?	1858-1910	
Umhlali River (Chaka's Kraal) POA66 29s26 31e12	1898-1902	POA66: 1900
Umhlanga <i>Nr36</i> 29s43 31e04 ?	1868-80	
Umhlangeni POA28 near 30s44 30e28	1891-1904	POA28 in 1891-1892
Umhlatuzi Rail near 28s58 31e29	no records	
Umhlungwa near 30s22 30e33	no records	
Umkiniza near 29s54 30e08	1904	
Umkomaas <i>Nr37</i> 30s15 30e42	1861-1910	
Umkomanzi 29s52 30e34	no records	
Umlaas Bridge POA24 near 29s42 30e33	1887-1902	POA24: 1891-1902
Umlaas Road POA86 near 29s42 30e33	1902-10	POA86: 1902-04
Umlalazi POA10 28s56 31e45	1898-1907	POA10: 1898
		(Zululand: 1888-98)
Umpumulo <i>Nr55</i> 29s08 31e03?	1884-89	

African Postal Heritage; African Studies Centre Leiden; APH Paper 15 (Part 7); Ton Dietz
South Africa: NATAL POSTMARKS: W - Z

Umsindusi/zi (Pentrich) POA69 and POA70	1887-1908	POA69: 1892
29s30 30e59?		POA70: 1892
Umsindusi Mission near 29s45 31e02	no records	
Umsinga (Pomeroy) POA78 28s32 30e24	1881-1910	POA78: 1900-01
Umsinsini POA5 30s29 30e28	1892-1908	POA5: 1893-1898
Umsunduzi (Umfoloji)[POA28] 28s29 32e10	1895-1910?	POA28: 1895-1896
Umtamvuma POA55 near 30s34 29e58	1896-1903	POA55: 1896
	+1907-10	
Umtonganoni ?	no records	
Umtwalumi Nr54 POA25 30s28 30e38?	1874-1910	POA25: 1891-1910
Umtwalumi Rail POA103 30s28 30e38?	1899-1910	1900-04
Umvoti Poort POA21 near 29s07 30e30	1899-1910	POA21: 1906-10
Umvunyana POA103 near 28s11 30e49	1904-10	POA103: 1906-10
Umzimkulu (Union Bridge) Nr30 30s16 29e56	1864-1910	
Umzinto Nr7 30s22 30e33	1858-1910	
Umzinto Rail near 30s22 30e33	1903-10	
Umzumbi POA21 and 29 near 30s22 30e33	1887-1908	POA29: 1891-1902
		POA21: 1900-1904
Umzumbi Heights POA55 near 30s22 30e33	1892-1904	POA55: 1892-93
Umzumbi Rail near 30s22 30e33	1909-?	
Undeen POA12 POA17 near 29s47 29e44	1892-1910	POA12: 1893
		POA17: 1905-10
Underberg POA7 29s47 29e30	1894-1907	POA7: 1895-1904
Ungoye ?	no records	
Union Bridge 30s42 29e48 ?	1901-10	
Untunjambili 28s56 30e55	1903-10	
Upper Tongaat (Boven Tongaat) POA26 29s25 31e00	1884-1910	POA26: 1890-92

African Postal Heritage; African Studies Centre Leiden; APH Paper 15 (Part 7); Ton Dietz
South Africa: NATAL POSTMARKS: W - Z

Upper Tugela (Bergville) 28s43 29e22	1899-1903	
Upper Umhlatuzi (Owen's Cutting) POA53 near 28s58 31e29	1899-1910	POA53: 1891-1902
Upper Umkomaas POA47 near 30s11 30e47	1896-1904?	POA47: 1896-1904
Upper Umzimkulu 30s15 29e55 ?	no records	
Upper West Street - Durban near 29s55 31e00	no records	
Upper Umhlatuzi (Boven Umhlatuzi) 28s25 31e01?	no records	
Utrecht 27s38 30e20	1902-10	
	(ZAR/Transvaal: <1902)	
Vaalbank 27s41 31e01	no records	
Van Reenen RS POA107 28s22 29e24	1892-1910	POA107: 1900-02
Vantsdrift POA45 POA97 28s13 30e29	1896-1910	POA45: 1891-93 POA97: 1902
Verulam <i>Nr43</i> 29s45 31e02	1851-1910	
Victoria Road - PMB's near 29s37 30e24	no records	
Viljoenspost 27s36 30e30	1903-10	
Vlaklaagte POA66 27s47 31e07 ?	1897-1910	POA66: 1897
Vryheid 27s52 30e38	1902-10	
	(Nieuwe Republiek: 1884-'88 ZAR/Transvaal: 1888-1902)	
Wakefield (Rawthorpe, Umgeni Poort) near 29s55 31e00	1901-10	POA66: 1903-10 POA66 near 29s25 29e54
Wakkerstroom 27s24 30e10	no records	
Walkershoek 28s26 29e39	1906	
Wallace Town (Inchanga) POA60 29s44 30e39	1887-92	POA60: 1892
Wartburg 29s25 30e35	1897-1910	
Waschbank 28s24 30e05	1887-1910	

African Postal Heritage; African Studies Centre Leiden; APH Paper 15 (Part 7); Ton Dietz
South Africa: NATAL POSTMARKS: W - Z

Waschbank (Road/Rail) POA37 POA83 28s24 30e05	1891-1901	POA37: 1891-92 POA83: 1900-1901
Watermead POA75 near 29s47 29e44	1900-07	POA75: 1902+1904
Waterval POA21 near 28s38 31e24	1899-1910	POA21: 1899
Weenen <i>Nr16</i> 28s57 30e03	1852-1910	
Welkom 28s31 31e16 ?	1905	
Wessels Nek (Road) POA39 and POA94 28s37 30e07	1891-1910	POA39: 1892 POA94: 1900-04
West End Durban near 29s55 31e00	1903-10	
West End –PMB POA14; POA21 near 29s37 30e24	1895-1910	POA14: 1900 POA21:1885-1897
Westleys <i>near 28s34 29e45</i> POA 24	1901-10	POA24: 1903-10
Weston near 29s13 29e50	1876-91	
West's Bluff - Durban POA2 near 29s55 31e00	1900-09	POA2: 1900-02
Westville near 29s52 30e46	1904-10	
Wilgefontein near 28s34 29e45	1885-1902	
Willow Grange 29s03 29e56 near Estcourt	1885-1910	
Winkel/Winkle Spruit POA90 30s05 30e50	1906-10?	POA90: 1906-10
Winters Kloof POA57 near 28s34 29e45	1906-09?	POA57: 1906-09
Winterton 28s46 29e35	1907-10	
Wonderboom POA46 near 29s07 30e30	1901-04	POA46: 1902-04
Woodcote 28s24 29e54	no records	
Woodside - PMB 21 near 29s37 30e24	1856-1910	
Wyford near 28s34 29e45	1905-10	
York <i>Nr10</i> 29s20 30e27	1852-1910	
Zululand <i>Nr56</i> around 28s58 31e29	1876-79	
Zunckel's/Zunkels POA36 28s50 29e23	1890-1910	POA36: 1894

Zungwini 27s34 30e53	no records	
Zuurberg POA51 near 30s34 29e58	1899-1908	POA51: 1899-1902
Zwaartkop, see Zwartkop	-	
Zwartfolosi POA89 near 27s52 30e38	1903-10	POA89: 1906-10
Zwartkop [POA7] near 27s45 30e47	1885-1910	POA7: 1893
Zwartkopkloof (Blackridge) ?	no records	
Zwartkop Rail near 27s45 30e47	1893	

For the period after 1910 also see: <http://www.postmarks.co.za/PH%20Union.htm> . But in July 2016 this website only covered the letters A, W, X, Y, and Z (and only partly).

NATAL South Africa Mapping of postmarks, based on Annex 2

Codes:

CAPITALS: nr code before 1890 ('BONC' and/or shield)

Place: post office started in the 1850s

Place: post office started in the 1860s

Place: post office started in the 1870s

Place: post office started in the 1880s

PLACE Nr code (= before 1890), but exact starting year unknown

Place: post office started in the 1890s

Place: post office started in the 1900s (in or before 1910)

Place: also Zululand stamps (1888-1898)

Place: area ceded to Natal in 1902, but ZAR/Transvaal before, as well as in some cases Nieuwe Republiek (Vrijheid/Vryheid; between 1884-1888)

South↓ East>	28	29	30	31	32
26					Maputa
27		Newcastle	Vryheid	Nongoma	Ubombo
28		Ladysmith	Weenen	Blackburn	Umfolosi
29		Estcourt	Pietermaritzburg	Durban	
30	Belfort	Rietvlei	Umzinto		

31	Landsend				
----	----------	--	--	--	--

26south 32east

s↓ e>	0	1	2	3	4	5
0						
1						
2						
3						
4						
5					Maputa	

27south 29east

s↓ e>	0	1	2	3	4	5
0						
1						
2					Charlestown MountProspect	
3				Botha'sPass	Boscobello Ingogo (Rail)	
4					NEWCASTLE NewcastleRail Spitzkop	
5				Ellensdale Muller'sPass Normandien Rivenhall	Ingagane Mossdale	

27south 30east

s↓ e>	0	1	2	3	4	5
0						
1				Luneberg	Sunkel'sDrift	
2	Rustverwacht					
3			Utrecht	Viljoenspost		Paulpietersburg
4				Leeuwnek	Penvaan	
5	AlcockSpruit	NellieValley		Bloodriver Kingsley Vryheid Zwartfolosi Ntabankulu Subeni	Zwartkop ZwartkopRail	Bowkers

27south 31/32east

s	0	1	2	3	4	5	32/0	32/1
---	---	---	---	---	---	---	------	------

↓ e>							
0						<i>Ingwavuma</i>	
1						Mfongosi	
2		Ngotshe					
3	Kongolona Louwsburg Mooiklip	Gobeni/Kobeni				<i>Ubombo</i>	
4	Alpha Hlobane <i>Vlaklaagte</i>		MooiPlatz				
5		Gommamaan	Zeza	<i>Ndwanwe/Nongoma</i>			Ndumu

28south 29east

s↓ e>	0	1	2	3	4	5
0						Droogdal
1					Cundycleugh	
2			<i>Besters VanReenen</i>	Walkershoe k	Driefontein	<i>ElandsLaagte</i> Pepworth
3			<i>Brakwal Acton Homes</i>	<i>Beith Dewdrop</i>	LADYSMITH**	
4	Isandhlwana		<i>UpperTugela</i>	<i>Spionkop Winterton</i>	HartsHill	<i>Pieters</i>
5		Bergville	<i>Zunkels</i>	Loskop	<i>Chieveley COLENSO</i> ColensoVolunteerCamp <i>Ennersdale Frere Olivershoek Road</i>	<i>Gourton Mielietuin</i>

Ladysmith**: *LadysmithRail*; HillsideRail; GreylingStation; HortonRadford ; *Modderspruit*; *North End*; *OndersbrookSpruit*; *Sunday'sRiverBridge*; Sutherlands; *Thornybush*; Westleys; *Wilgfontein*; WintersKloof; Wyford.

28south 30east

s↓ e>	0	1	2	3	4	5
0	BUFFALO RIVER <i>Dannhauser</i>	Talana	Malongeni			

	Hattingspruit Kalabasi						
1	Biggarsberg DundeeCoalFie lds Glastonbury Glencoe (J.) Meran	Coalfiel ds DUNDE E Elizabeth h	De Waar Vantsdrift	Broadacre Nqutu NqutuRoad St. Augustin e's	Nondweni Umvunyana		
2	Waschbank WaschbankRoa d		Elandskraal Helpmekaar	Rorke's Drift		FortLouis	
3	WesselsNek		Umsinga				Qudeni
4	Stendal		Embabane FERRYHOTEL TugelaFerry		Inadi		
5	Bursea Mona WEENEN		MOUNTMORI AH Muden	Ehlanzeni	Ngobevu/Tug ela	Hopetown/Krantz kop Untunjambili	

28south 31/32east

s ↓ e >	0	1	2	3	4	5	32/0	32/1
0		Inhlazatje				Hlabi sa		
1		Dennydalt on LowerUmf olosi	Eqwatsha Ulundi	Mahlaba tini			Somk ele	
2								
3	Babana ngo Nkandh la Ntingw e	Welkom	Entonjaneni/M elmoth Waterval					Umsunduzi/U mfolosi
4				Hoskens Nkwalen i				
5		Entumeni	BLACKBURN Engsheni Eshowe(Camp) FortYolland KangelaStreet Spudeni UpperUmhlatus i		Empang eni GOODH OPE Highfiel d Mtunzin i Umlala			

					Obanjeni			
--	--	--	--	--	----------	--	--	--

29south 29east

s↓ e>	0	1	2	3	4	5
0			CATHKIN	Tabanhllope		BUSHMEN'S RIVER/ ESTCOURT Brookes Brynbella EstcourtRail Halfway House Middleton WillowGrange
1					Elandskop	FountainHall Joubertsvlei Middelrest MOOIRIVIER Rosetta SouthDowns Weston
2					Allendale Kamberg	(Fort) Nottingham Gumtrees Kershaws NottinghamRoad Rockmount
3					Insinga Loteni	Impendhle
4		GardenCastle		Himeville Stepmore Underberg	Polela/Bulwer Glengavel Richenau Scotston Undeen Watermead	BOSTON HILLS Deepdale Normanhurst
5			Coleford		Donnybrook Highbury	Greenvale

29south 30east

s↓ e>	0	1	2	3	4	5
0			DeJager's Drift	GREYTOWN Olivefontein UmvotiPoort	HERMANN SBURG Hermitage	
1	Holmesdale Lenjaneni Drift	Doesburg	Talavera	HardenHeights Misgunst	MountElias	NOODSBERG

African Postal Heritage; African Studies Centre Leiden; APH Paper 15 (Part 7); Ton Dietz
 South Africa: NATAL POSTMARKS: W - Z

				SEVENOAKS		SingleTree
2	Balgowan CAVERSHAM CURRY'SPOST DARGLE DargleRoad Heatherdon Heronvale STERKSPRUIT/L idgetton	Boshoff Rd Houboschran d HOWICK HowickGenera lHospital Shafton	ImpolweniMissi onStation NEWHANOVER NewHanoverRai l YORK	NoodsbergRoa d Schroeders Wartburg	Dalton FawnLeas Harburg Broadmore Lilienthal	Insuzi
3	Wonderboom	CatoManor Cedara EDENDALE HiltonRoad HowickRail Stirling SweetWaters	PMB*		Hillcrest	Appelsbosc h Umsindusi
4	BYRNETOWN	Taylors	FOXHILL Manderston Nelsrust NEWLEEDS THORNVILLEJU NCTION	Botha's Hill CAMPERDOW N CatoRidge Georgedale Glenisla Harrison Inchanga TableMountai nMission Topomasi Uitkomst UmlaasBridge UmlaasRoad WallaceTown	Drummon d Gillets Krantzkloof NewGerma ny Palmiet	Duff'sRoad Inanda Springfield
5	Alderley HellaHella RICHMOND RichmondRoad RichmondRail Rosebank SPRINGVALE Umkiniza		Durslade MIDILLOVO	Cleveland Dering MidIllovoCentr al	Klipkraal PINETOWN PinetownB ridge SPRINGGR ANGE Westville	Clairmont Congella ISIPINGO Jacobs Malvern Mariannhil l Mayville Merebank MUSGRAV EROAD Northdene Northdene R.S. Reunion Sarnia SeaView(St)

* **PMB** also: Alexandra Road; Bisley Road; **Boom street**; **Chapel Street**; **Grahams**; Greyling Station; Horton Radford; **New Scotland**; Otto's Bluff; Pentrich; Prestbury; **West End**; **Woodside**;

29south 31east

s↓ e>	0	1	2	3	4	5
0	UMPUMULO		Amatikulu Inyoni InyoniRail	Ginginhlovu		
1	Ekutandaneni Mapumulo	Ashton Highlands KEARSNEY NEWGUELDERLAND Nonoti	FortPearson LowerTugela			
2	EsidumbeniMissionStation UpperTongaat	Chaka'sKraal Darnall GLENDAL Groutville STANGER StangerRail TinleyManor UMHLALI UmdlaliRiver				
3	Icibini MOUNTMORELAND RietValley TONGAAT	Albert	Avoca			
4	MountEdgecombe OttawaRail Phoenix Tafamasi VERULAM					
5	DURBAN** POINT QUEENSBRIDGE UMHLANGA					

** **Durban** also: **Addington**; Alexandra Junction; Avondale Road; Back Beach; **Bellair**; Berea Road; Bullstrode; Church Hill Road; **Clarke Road**; **Florida Road Durban**; **Greenwood Park**; **Greyville**; Hillary; Overport; Red Hill; **Russel Street**; **South Coast Junction (Rossburgh)**; **Stamford Hill**; **SYDENHAM**; **Sydenham Indian Office**; **Umbilo**; **Umgeni**; Wakefield; West End; West's Bluff;

30/31south 28east

s↓ e>	0	1	2	3	4	5
0						
1					Belfort	
2						
3						

4						
5						
31/0						
31/1						
31/2						
31/3				Landsend		

30/31south 29east

s↓ e>	0	1	2	3	4	5
0					Abercarnie	Creighton
1				Hilltop	Blackwater Dumisa	Islington UMZIMKULO
2						RIETVLEI
3					STAFFORD'SPOST	HARDING Ingele Salem Umtamvuma Zuurberg
4					UnionBridge	Deemount
5						
31/1			PALMERTON			
31/2						

30south 30east

s↓ e>	0	1	2	3	4	5
0	BinghamsN eck Dronkvlij Glenbain XOPO Maitlandfie ld Rockvale	Freemans		BEAUMONT	AdamsMissio n Umbumbulu	Amanzimto ti ILLOVO Illovo Rail Illovo River Umbogint wini
1	Fairfield Finchley	EastStranges HIGHFLATS		Indututu	Amahlongwa Isipofu LowerUmkom aas Scottsburg TaylorsPost UMKOMAAS UpperUmkom aas	
2		DingleyDell Hlokozi	Umsinsini	Hazeldene IFAFA LowerUmkom	Equeefa Esperanza	

				<p>anzi NilDesperandum ParkRynie Thompson UMTWALUMI UmtwalumiRail UMZINTO UmzintoRail Umzumbi UmzumbiHeights UmzumbiRail</p>		
3		St.Faith's	Mehlomnyama			
4	Edwaleni Enqabeni Izingolweni Moguntia	MURCHISON MurchisonPoliceCamp	Batstones Imbezane Marburg NorthShepstone PortShepstone Umhlangeni			
5	WinkleSpruit	Braemar				

Other:

[British Army South Africa Fieldpost Office \(1899-1902\)](#)

D.N. Rail (>1900)

Fouries Lager (1900)

General Burger Lager (1900)

Mimosa (1904)

[Natal Field Force Army Post Office \[British\]](#)

ZULULAND (1876-77) [1878-1893 OWN STAMPS]

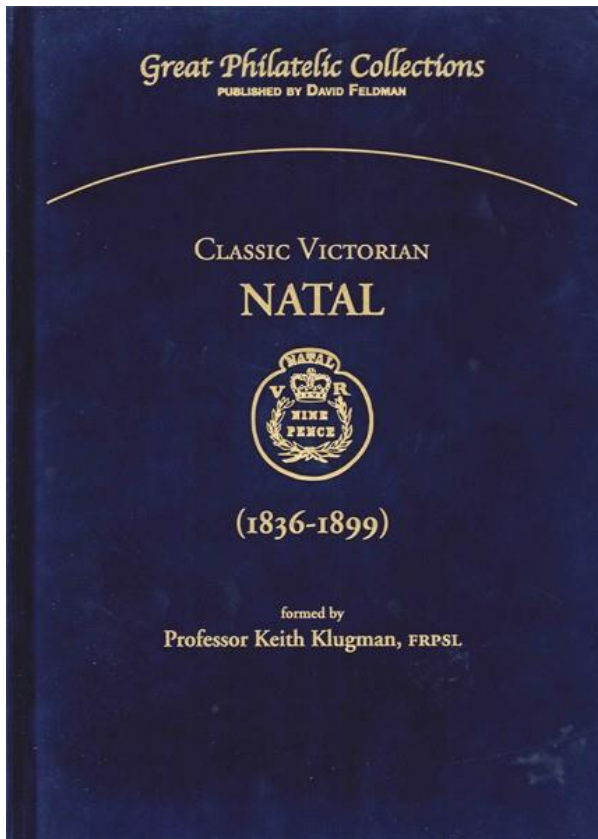
Roberts (1890)

[Standerton British Army Post Natal Field Force in Transvaal during the Boer War 1899-1902](#)

STEELPOORT (Nr 32)

T.P.O.

Annex 3:



NATAL: Classic Victorian Natal 1836-1899 formed by Prof. Keith Klugman

The stamps of Victorian Natal fall into two periods.

The first issue of 1857–59 are among the great primitive classics of the world. These stamps were imperforate bits of colored paper embossed with dies designed for revenue purposes. As both the dies and the original paper were available for some thirty five years after their issue, reprints exist indistinguishable from the original stamps, so the embossed stamps can only be described as truly genuine if they are used, or on cover with postmarks known to have been used on genuine letters. Mint examples are thus excluded from all major Natal collections. These stamps were highly sought after by great early collectors like Ferrari and Tapling. This exhibit is the most comprehensive showing ever of the embossed postage stamps of Natal and their uses, including 2 of 3 tete-beche 3d pairs in private hands.

Stamps based on the stunning portrait of the young Queen Victoria by Chalon replaced the embossed stamps in 1859 except for a brief period when there was a shortage of Chalon stamps in 1861.

The Chalon head stamps were printed by Perkins Bacon and then by De La Rue. They were initially valid for both postage and revenue purposes but from 1869 were overprinted for postage only. The “Postage” overprints of 1869 represent the biggest collecting challenge after the embossed issues, as they exist in 6 forms. The collection houses the largest collection of these stamps in private hands and in particular the most mint shillings of 1869 in any collection since the Ferrari collection was sold in the 1920s.

The most prized items of Natal of the 1870s are combinations on cover with stamps of the Transvaal and 9 of 14 in private hands are in the collection. Even more rare are combinations with the Orange Free State in 1880/1 and 2 of 3 known are in the collection. During the 1880s there was a short lived Boer Republic called the New Republic that issued stamps from 1886-8 and the collection includes virtually all the major covers sent

African Postal Heritage; African Studies Centre Leiden; APH Paper 15 (Part 7); Ton Dietz
South Africa: NATAL POSTMARKS: W - Z

through or to Natal. The highlights of the 1890s are the short lived Ship Letter mark of Durban which is struck on great combination covers of Rhodesia and Moçambique (shown). Also shown are 8 of 12 other Ship Letter covers recorded with origins around the Indian Ocean. The other 1890 highlight of Natal philately is the Madagascar British Inland Mail letters sent via Natal during the Hova rebellion against the French and here again most of the major items are illustrated in the collection.

The scope of the collection is from the earliest letter in private hands (from an American missionary in Natal in 1836), to the outbreak of the Second Anglo Boer War in 1899.

There has been no major collection of Natal exhibited internationally since the 1940s. There is no handbook of Natal beyond plating studies published by Mann in the London Philatelist in the 1940s. Archival studies are being published in the Cape and Natal Philatelic Journal by John Dickson, but until a major work on the stamps and postal history of Natal is written, this book, which illustrates the finest collection of Victorian Natal ever formed, will serve as the best picture we have on what exists of the 19th century stamps and postal history of Natal.