



Universiteit  
Leiden  
The Netherlands

## **Dynamics in photosynthetic transient complexes studied by paramagnetic NMR spectroscopy**

Scanu, S.

### **Citation**

Scanu, S. (2013, October 10). *Dynamics in photosynthetic transient complexes studied by paramagnetic NMR spectroscopy*. Retrieved from <https://hdl.handle.net/1887/21915>

Version: Not Applicable (or Unknown)

License: [Leiden University Non-exclusive license](#)

Downloaded from: <https://hdl.handle.net/1887/21915>

**Note:** To cite this publication please use the final published version (if applicable).

Cover Page



Universiteit Leiden



The handle <http://hdl.handle.net/1887/21915> holds various files of this Leiden University dissertation.

**Author:** Scanu, Sandra

**Title:** Dynamics in photosynthetic transient complexes studied by paramagnetic NMR spectroscopy

**Issue Date:** 2013-10-10

**Role of hydrophobic interactions in the encounter  
complex formation of plastocyanin and  
cytochrome *f* complex revealed by paramagnetic  
NMR spectroscopy**

Adapted with permission from:  
Scanu S., Foerster J.M., Ullmann G.M. and Ubbink M. (2013) Role of hydrophobic interactions in the encounter complex formation of plastocyanin and cytochrome *f* complex revealed by paramagnetic NMR spectroscopy. *J Am Chem Soc* **135**, 7681-7692. Copyright 2013 American Chemical Society.

## Abstract

Protein complex formation is thought to be at least a two-step process, in which the active complex is preceded by the formation of an encounter complex. The interactions in the encounter complex are usually dominated by electrostatic forces, whereas the active complex is also stabilized by non-covalent short range forces. Here, the complex of Cyt *f* and Pc, electron transfer proteins involved in photosynthesis, was studied using paramagnetic relaxation NMR spectroscopy. The labeling of Cyt *f* with nine spin labels shows that a large part of the protein surface area is sampled by plastocyanin. In contrast, plastocyanin is always oriented with its hydrophobic patch toward Cyt *f*. The complex was visualized using ensemble docking, showing that the encounter complex is stabilized by hydrophobic as well as electrostatic interactions. The results suggest a model of electrostatic pre-orientation before the proteins make contact, followed by the formation of an encounter complex that rapidly leads to electron transfer active conformations by gradual increase of the overlap of non-polar surface areas on Cyt *f* and plastocyanin. In this model the distinction between the encounter and active complexes vanishes, at least in the case of electron transfer complexes, which do not require a high degree of specificity.

## Introduction

A general model for protein-protein interactions describes protein association as a stepwise process in which the formation of the final complex is preceded by that of a transient, lowly populated state encounter complex.<sup>22</sup> In the first step of association the proteins are steered towards the encounter complex by diffusion and long-range electrostatic interactions. In the encounter state proteins show few specific interactions. They rather tend to assume multiple orientations to sample the surface of the partner and reduce the dimensionality of search of the specific binding site.<sup>21</sup> The final complex is dominated by short-range, specific interactions, which stabilize it in a single orientation. An encounter complex will not always proceed towards the final complex. In some cases it is futile and will dissociate again.<sup>24,136</sup> The applicability of this model has been theoretically and experimentally demonstrated for complexes with electrostatic assisted association, both when the interaction partners showed high overall charge complementarity<sup>23,137</sup> and when opposite charges are more localized in specific regions on the surface of the reactants.<sup>28,109</sup> At the same time, given the wide variety in the electrostatic surface properties of proteins, this model cannot readily be generalized for all protein complexes. For complexes in which the interaction partners do not present charge complementarity or apparent dipolar interactions, a desolvation-mediated association has been suggested on the basis of theoretical work,<sup>138,139</sup> in which hydrophobic interactions guide both encounter complex formation and stabilization of the final complex. Experimental evidence of a predominantly hydrophobic-driven binding event is rare, although some has been reported.<sup>54,140</sup>

To investigate the contribution of the different forces involved in the molecular recognition process for transient complexes involved in electron transfer (ET), the complex formed by Pc and Cyt *f* from the cyanobacterium *Nostoc sp.* PCC 7119 was studied. Pc and Cyt *f* are redox partners in oxygenic photosynthesis in plants, green algae and cyanobacteria. Pc transfers electrons from Cyt *f* of the *b6f* complex to PSI.<sup>39</sup> In both proteins the redox active sites are buried below extensive hydrophobic surface patches, which form the specific binding site. The overall electrostatic properties of the proteins vary significantly between different species and influence the final orientation of the complex. In plants, the final complex has been shown to be electrostatically stabilized in a "side-on" orientation by complementary localized charges on the protein surfaces, negative in Pc and positive in Cyt *f*.<sup>44,62</sup> Complementary charges tilt Pc toward the long side of Cyt *f* and align the hydrophobic binding sites, thus facilitating the ET reaction. In the cyanobacterium *Phormidium laminosum*, the final complex assumes a "head-on" orientation.<sup>54</sup> Pc is oriented perpendicular to the haem plane and comes into contact with Cyt *f* only with the hydrophobic patch. The "side-on" orientation was also observed in the complexes from the cyanobacteria *Nostoc*<sup>98</sup> and *Prochlorothrix hollandica*,<sup>32</sup> in which the charges are inverse compared to the plant counterparts, being positive in Pc and negative in Cyt *f*. Site-directed mutagenesis of key interface residues important for the overall electrostatic potential of the proteins from *Nostoc*, demonstrated that electrostatic interactions heavily regulate the kinetics of complex formation.<sup>8,66</sup>

Interestingly, the loss of negatively charged residues in Cyt *f*, in which charges are spread over a large part of the surface instead of being localized in a specific region, caused only small changes of the association rate constant,<sup>66</sup> whereas mutations of positively charged residues in a conserved region in Pc showed these charges to be fundamental for fast association.<sup>8</sup> The surface charge properties of Pc and Cyt *f* appear to influence the degree of dynamics within the complexes.<sup>107</sup> The *Ph. laminosum* and *Pr. hollandica* complexes showed to be highly dynamic.<sup>32,54</sup> The solution structures of the above mentioned complexes have been obtained by taking advantage of the pseudocontact shift (PCS) caused by the paramagnetic haem iron of Cyt *f* on backbone amide protons of Pc. PCS from the haem are not very sensitive to dynamics although the presence of many different Pc orientations will cause a decrease in the observed average PCS. In contrast, a recent paramagnetic relaxation enhancement (PRE) NMR study on the *Nostoc* system revealed that the Pc-Cyt *f* complex is more dynamic than was suggested by PCS, indicating the presence of a significantly populated encounter state.<sup>29</sup>

PRE NMR spectroscopy has proven to be a sensitive technique for the detection and visualization of lowly populated intermediates in protein-DNA<sup>96</sup> and protein-protein complexes.<sup>28,140,142</sup> PREs arise from magnetic dipolar interactions between the unpaired electron of a paramagnetic center and the observed nucleus, which causes an increase in the relaxation of the latter. Due to the large magnetic moment of the unpaired electron and the inverse sixth power distance dependence of the PRE, it is very large for nuclei that spend time in close proximity of the paramagnetic center. The sensitivity of PRE for lowly populated states is due to the fact that in the NMR fast exchange regime the observed PRE rate is a population weighted average of all species present in solution.<sup>84</sup> If in the lowly populated state the nucleus is close to the paramagnetic center, a PRE can be detected on the exchange averaged signal, even if the population is as low as 1%. Intermolecular PREs can thus be used to investigate transient intermediates in protein-protein complexes.<sup>140</sup> The observed PREs provide explicit qualitative evidences of the presence of the encounter state, but they do not provide a complete description of the encounter complex. Furthermore, the visualization of the encounter complex is an 'inverse' problem since many possible solutions can correspond to the observed PREs. To depict the encounter complex, experimental data need to be supported by theoretical models, generated by computational approaches. In the ensemble docking approach, multiple conformers of a protein are simultaneously docked to the other protein on the basis of the experimental PRE.<sup>140</sup> The encounter complex is visualized as an ensemble of orientations that fit the experimental restraints. In purely theoretical methods, such as Brownian dynamics (BD) and Monte Carlo (MC) simulations, in which proteins are docked only on the basis of electrostatic interactions,<sup>57,109</sup> the encounter complex is given as a distribution of the favorable electrostatic orientations.<sup>28</sup>

In this study, we report the visualization of Pc-Cyt *f* encounter complex and the characterization of this complex by the combination of PRE NMR, MC simulations and ensemble docking. The comparison of the results from the different approaches indicates that long-range electrostatic interactions pre-orient Pc with the hydrophobic patch towards Cyt *f* and that Pc maintains the same orientation

while sampling the surface of Cyt *f*. The ensemble docking visualization of the encounter complex showed that the encounter complex is stabilized by hydrophobic as well as electrostatic interactions. We propose a model for Pc-Cyt *f* complex formation in which long-range electrostatic interactions pre-orient the unbound proteins before they make contact. Pc diffusively binds to Cyt *f* forming an extended encounter complex stabilized by the overlap of the respective non-polar surface areas and the encounter complex rapidly evolves to ET active conformations. The ambiguous distinction between the encounter and the active complex in this system will be discussed in the context of the physiological *b6f* complex.

## Experimental section

### Protein production and purification

<sup>15</sup>N enriched, Zn-substituted Pc was produced and purified as described before.<sup>29</sup> The concentration of the protein was determined by absorbance spectroscopy using  $\epsilon_{280} = 5 \text{ mM}^{-1}\text{cm}^{-1}$ . The yield of pure protein was 10 mg/L of culture.

The pEAF-WT plasmid, containing the gene of the soluble domain (residue 1-254) of *Nostoc* sp. PCC7119 Cyt *f* was kindly provided by Prof. Dr. Miguel A. De la Rosa (University of Seville). Cyt *f* mutants were obtained using pEAF-WT plasmid as template for mutagenesis. The mutations to cysteine were introduced by using the QuikChange Site-Directed Mutagenesis kit (Stratagene) as described in Chapter II. The primers used for the mutations at the positions N71, Q104 and S192 were described before.<sup>29,143</sup> The primers employed for the introduction of a cysteine at the positions Q7, Q38, A63, Q125, S181 and Q242 are reported in Table 3.1.

**Table 3.1.** Nucleotide sequence of the primers used in site-directed mutagenesis of Cyt *f*. Codon-changing mutations are shown in bold, italic and underlined; silent mutations are in bold.

Mutation	Primer sequence
Q7C	FWD: 5'-gcatatcctttctgggcgcag <b><i><u>tgc</u></i></b> acttaccag-3'
Q38C	FWD: 5'-gccacagaagttgaagttc <b><i><u>tgc</u></i></b> ccgtactaccgacaccg-3'
A63C	FWD: 5'-ccagcgt <b><i><u>tgc</u></i></b> caacaagttggt <b><i><u>tgc</u></i></b> gatggctctaagg-3'
Q125C	FWD: 5'-cccgg <b><i><u>tgc</u></i></b> gaacagtat <b><i><u>tgc</u></i></b> gaaatcgtcttccctgttctttctcccaacccc-3'
S181C	FWD: 5'-gcgctgctgctaccggtaacaat <b><i><u>tgc</u></i></b> aagattgctaacaagag <b><i><u>ggg</u></i></b> cg-3'
Q242C	FWD: 5'-ccctaacggttggtggtt <b><i><u>tgc</u></i></b> ctcgacgcagaattggtctcc-3'

In each primer a silent mutation (bold) was designed to remove or to introduce an extra restriction site. In the cases of Q7C and Q38C mutations, the codon-changing mutations (bold, underlined) introduced at the same time a restriction site for the enzyme *Apa*I and removed a restriction site for *Mn*II, respectively. For A63C and Q125C mutations, restriction sites for the enzymes *Bst*XI and *Xma*I, respectively, were introduced at the 5' end of the forward primers. In the primers

for the S181C mutation, the restriction site for the enzyme *MnII* was inserted at the 3' end of the forward primer. In the case of the Q242C mutant, the restriction site for the enzyme *TaqI* was introduced next to the codon for the cysteine mutation. The presence of the mutations was verified by DNA sequencing.

Truncated Cyt *f* was produced in *E. coli* MV1190 (D(*lac-proAB*), *thi*, *supE*, D(*srl-recA*) 306::Tn10 (tet<sup>r</sup>) [F':*traD36*, *proAB*+, *lacI*<sup>q</sup>ΔM15]), transformed with pEAF-WT or mutant plasmids and co-transformed with pEC86, containing a cassette for *c*-type cytochrome over-expression.<sup>144</sup> Production and purification of the protein, and spin label attachment of (1-Acetoxy-2,2,5,5-tetramethyl-δ-3-pyrroline-3-methyl) methanethiosulfonate (MTS) or (1-Oxyl-2,2,5,5-tetramethyl-δ-3-pyrroline-3-methyl) methanethiosulfonate (MTSL) were performed as previously reported.<sup>8,29</sup> The yield of protein production ranged from 1 to 2 mg/L of culture. The expression of Q125C mutant was not reproducible and only a small amount of protein was obtained and used for NMR experiments. The concentration of the protein was determined by absorbance spectroscopy using  $\epsilon_{556} = 31.5 \text{ mM}^{-1}\text{cm}^{-1}$  for ferrous Cyt *f*.

## NMR experiments

All NMR samples contained MES (20 mM, pH 6) and 6% D<sub>2</sub>O for lock. The ferric state of Cyt *f* was preserved by addition of K<sub>3</sub>[Fe(CN)<sub>6</sub>] (50 μM). The pH of the sample was adjusted with small aliquots of HCl (0.5 M) and NaOH (0.5 M). For the chemical shift perturbation experiments Cyt *f* was titrated into Zn-substituted <sup>15</sup>N Pc (50 μM). Spectra were recorded at multiple Cyt *f*:Pc molar ratios (0.1, 0.2, 0.4, 0.6, 0.8, 1.0, 2.5, 5.0). Chemical shift perturbation experiments were not performed for Q125C Cyt *f* because of lack of protein. Samples for PRE measurements contained 33 μM Cyt *f* for the Q125C mutant and 66 μM for the other mutants, labeled with either MTS or MTSL. Samples also contained Zn-substituted <sup>15</sup>N Pc, 100 μM in the complex with Q125C Cyt *f* and 200 μM for the other Cyt *f* mutants. All NMR spectra were recorded at 298 K on a Bruker Avance III 600 MHz spectrometer equipped with a TCI-Z-GRAD Cryoprobe. The <sup>1</sup>H-<sup>15</sup>N HSQC spectra were acquired with 1024 and 80 complex points in the direct and indirect dimensions, respectively.

## NMR data analysis

The NMR spectra were processed with NmrPipe<sup>145</sup> and analyzed with CcpNMR Analysis.<sup>146</sup> Chemical shift perturbation analysis was carried out as describe before.<sup>29</sup>

The PREs were determined according to the procedure described by Battiste and Wagner.<sup>81</sup> The intensity ratio  $I_p/I_d$  of the Pc resonances in the presence of MTSL-Cyt *f* ( $I_p$ ) and MTS-Cyt *f* ( $I_d$ ) were normalized by dividing them by the average value of the ten largest  $I_p/I_d$  values (1.28 for Q7C, 1.63 for Q38C, 1.16 for A63C, 1.13 for N71C and Q104C, 1.37 for Q125C, 0.83 for S181C, 1.06 for S192C and 0.92 for Q242C). The PRE ( $\Gamma_2$ ) values were calculated according to the formula:



$$\frac{I_p}{I_d} = \frac{R_{2d} \exp(-\Gamma_2 t)}{R_{2d} + \Gamma_2} \quad (3.1)$$

$R_{2d}$  represents the transverse relaxation rate in the diamagnetic sample, which was calculated from the linewidth at half height obtained from a Lorentzian peak fit in the direct dimension, by using FuDA (this software was kindly provided by Dr. D. Fleming Hansen, University College London). The symbol  $t$  indicates the time for transverse relaxation during the pulse sequence (9 ms). The  $\Gamma_2$  values were extrapolated to the 100% bound state using the experimentally obtained  $K_D$ .

The average intermolecular PCS from the ferric haem iron of Cyt *f* to the backbone amide atoms in all Pc conformers was calculated and compared with the experimental PCS previously measured in the wild type complex.<sup>98</sup> The equation used for the PCS calculation, assuming an axial magnetic susceptibility tensor oriented along the Fe-Y1 vector,<sup>46</sup> was:

$$\Delta\delta_{PCS} = \frac{\Delta\chi_{ax}}{12\pi r^3} (3 \cos^2 \theta - 1) \quad (3.2)$$

In which  $\Delta\delta_{PCS}$  is the size of the PCS,  $r$  is the distance between haem iron and observed Pc nucleus, and  $\theta$  is the angle between Pc nucleus, haem iron and the nitrogen of the amine group of Y1 in Cyt *f*.  $\Delta\chi_{ax}$  is the size of the axial magnetic component of the susceptibility tensor, derived from the g-tensor values measured by EPR spectroscopy on plant Cyt *f* and taken to be  $7 \times 10^{-32} \text{ m}^3$ , as previously reported for *Nostoc* Cyt *f*.<sup>98</sup> To correct for the possible difference in tensor size for the temperatures of EPR and NMR measurements, 10 K and 298 K, respectively, the  $\Delta\chi_{ax}$  was varied from 0.7 to  $8.4 \times 10^{-32} \text{ m}^3$ .

The agreement between observed ( $PCS^{obs}$ ) and calculated ( $PCS^{calc}$ ) PCS was expressed by the PCS Q factor, defined as:

$$Q_{PCS} = \sqrt{\frac{\sum (PCS^{obs} - PCS^{calc})^2}{\sum (PCS^{obs} + PCS^{calc})^2}} \quad (3.3)$$

### Monte Carlo simulations of the encounter complex

The structure of the soluble part of Cyt *f* (residues 1-254) used for the calculation was taken from the crystal structure of the  $b_6f$  complex from *Nostoc* sp. PCC 7120, PDB entry 2ZT9.<sup>147</sup> The amino acidic sequences of Cyt *f* from *Nostoc* sp. PCC 7120 and sp. PCC 7119 are identical. The structure file for Pc was taken from the PDB entry 2GIM.<sup>42</sup> The hydrogen atoms were added with the module HBUILD<sup>148</sup> of Charmm.<sup>149</sup> To preserve the original structure, only the hydrogen atoms were minimized with the Charmm force field,<sup>150</sup> while the other atoms were kept fixed in their original position. The iron of Cyt *f* and the copper of Pc were considered to be in the oxidized state, like in the experiments. The electrostatic potentials for the single proteins were calculated with APBS.<sup>151</sup> The dielectric constants for Cyt *f* and

the water were set to 4 and 80, respectively. For all electrostatic potentials, a box with a diameter of 225 Å in x, y and z directions, with Cyt *f* centered at the origin of the coordinates frame, was defined. The ionic strength was set to 0.02 M and the temperature to 298 K. The electrostatic potential was calculated with the linearized Poisson-Boltzmann equation.

The docking was performed with the program MC-Dock<sup>57</sup> and was carried out in a similar way as was done before.<sup>28</sup> Cyt *f* was chosen as the receptor and Pc was the ligand to dock. The simulation consisted of 250 runs with 1000000 steps each and was carried out at a temperature of 298 K. Only structures that respected the Metropolis MC criterion<sup>152</sup> were saved resulting in about 2300000 Cyt *f*-Pc orientations. The main difference to the previous simulation consisted in the use of an inclusion grid. The inclusion grid was created by defining a grid with a distance to the surface of Cyt *f* of 3 Å and a grid point separation of 0.5 Å. If any atom of Pc is located within this inclusion grid, the structure was included in the final encounter ensemble, otherwise the orientation was not considered. An ensemble of 5000 Pc orientations, randomly selected, was considered for the calculations. The averaged distances were derived from the ensemble and compared to the experimental distances.

### Ensemble docking

Mutations and spin labels were modeled on the structure of Cyt *f* (PDB entry 2ZT9<sup>147</sup>) and four conformations were used to represent the mobility of the spin label.<sup>77</sup> The structure of Pc was taken from PDB entry 2GIM.<sup>42</sup>

The  $\Gamma_2$  were converted into distances for structure calculations using Equation 3.4:

$$r = \sqrt[5]{\frac{\gamma^2 g^2 \beta^2}{20\Gamma_2} \left( 4\tau_c + \frac{3\tau_c}{1 + \omega_h^2 \tau_c^2} \right)} \quad (3.4)$$

Where  $r$  is the distance between the oxygen atom of MTSL and the Pc amide proton,  $\gamma$  is the proton gyromagnetic ratio,  $g$  is the electronic g-factor,  $\beta$  is the Bohr magneton,  $\omega_h$  is the Larmor frequency of the proton and  $\tau_c$  is the rotational correlation time of the MTSL oxygen-proton vector.  $\tau_c$  was taken to be 30 ns on the basis of the HYDRONMR<sup>153</sup> prediction of the rotational correlation time for the Pc-Cyt *f* complex.

The restraints for the calculations were obtained according to Equation 3.5:

$$\Gamma_2^{obs} = f_1 \Gamma_2^{ens} + f_2 \Gamma_2^{final} \quad f_1 + f_2 = 1 \quad (3.5)$$

The ensemble  $\Gamma_2$  ( $\Gamma_2^{ens}$ ) was calculated as the difference between observed  $\Gamma_2$  ( $\Gamma_2^{obs}$ ) and back calculated  $\Gamma_2$  from the model of the final complex (model 1, PDB entry 1TU2) ( $\Gamma_2^{final}$ ). The calculations were carried out with  $f_2$  values of = 0, 0.15, 0.25, 0.35, 0.5, 0.65, 0.75, 0.85, 0.95 and 1.0. The restraints were grouped into three classes as described before.<sup>29</sup>

A description of the encounter complex was obtained with restrained rigid-body

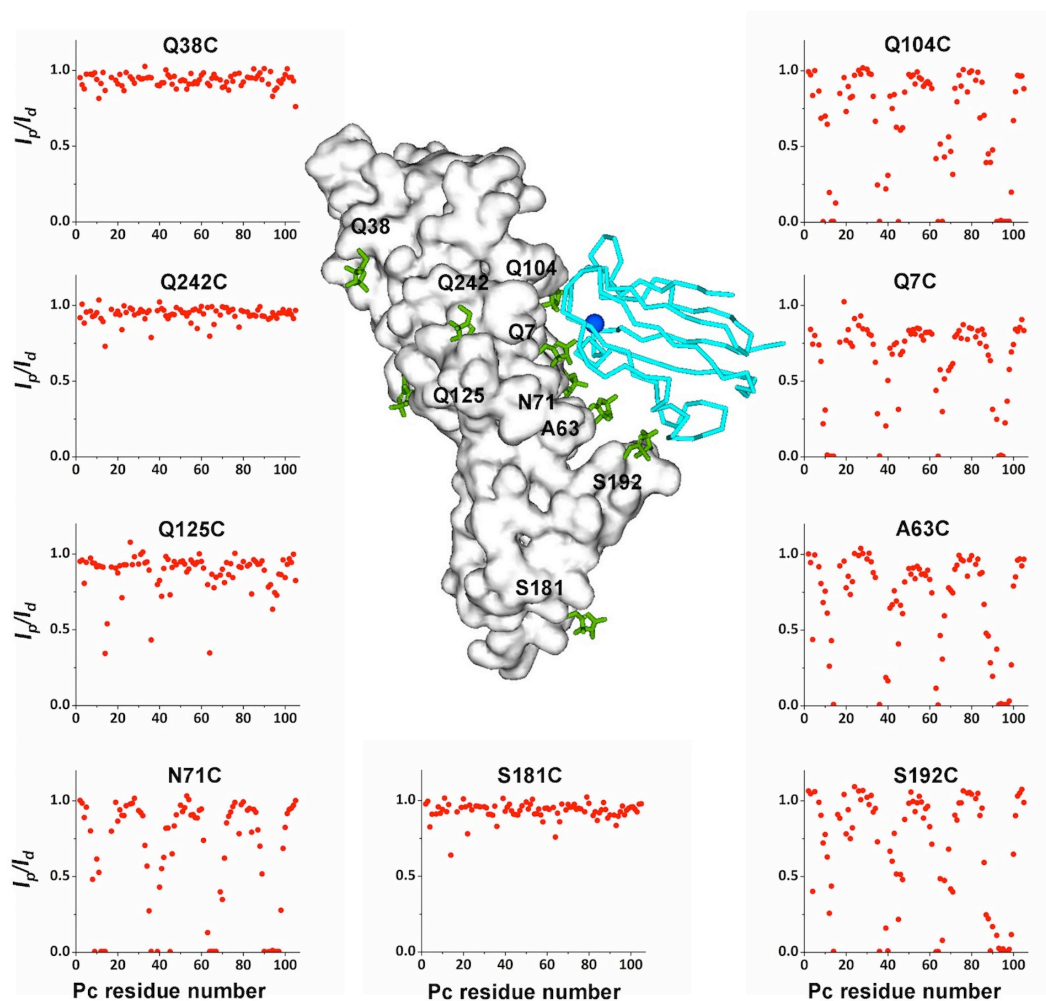
docking in Xplor-NIH 2.9.9<sup>154</sup> to minimize the difference between observed and back calculated distances for all spin labels. Calculations were carried out using either a single Pc conformer or an ensemble of Pc molecules, with between 2 and 20 copies. The distances ( $r$ ) between an amide proton and the oxygen atom of MTSL were  $r^{-6}$  averaged for all MTSL orientations and all Pc conformers. Cyt *f* and Pc were both considered as rigid bodies, the coordinates of Cyt *f* were fixed, and Pc ensemble members were allowed to move individually in a restrained rigid-body molecular dynamics calculation. Overlap of Pc copies was allowed, since the ensemble represents a distribution of states. Similarly, overlap of MTSL conformers with other MTSL or Pc copies was allowed. For the visualization of the final encounter complex ensemble 150 dockings were performed, yielding 144 ensembles of seven Pc conformers, with a difference in the total restraint energy  $\leq 20\%$ .

The ensembles from separate dockings were evaluated by calculating the average violation over all experimental distances. Class 1 and class 3 restraints are not easily expressed in a Q value. Violations provide a better representation of the fit of all three classes of restraints. Class 2 violations were defined as the absolute difference between experimental and calculated distances for a certain amide nucleus. Class 1 and class 3 restraints were defined as that difference only for back-predicted distances that were above 14 Å and below 23 Å, respectively. The ensemble violation is the average violation for all residues and all spin labels.

## Results

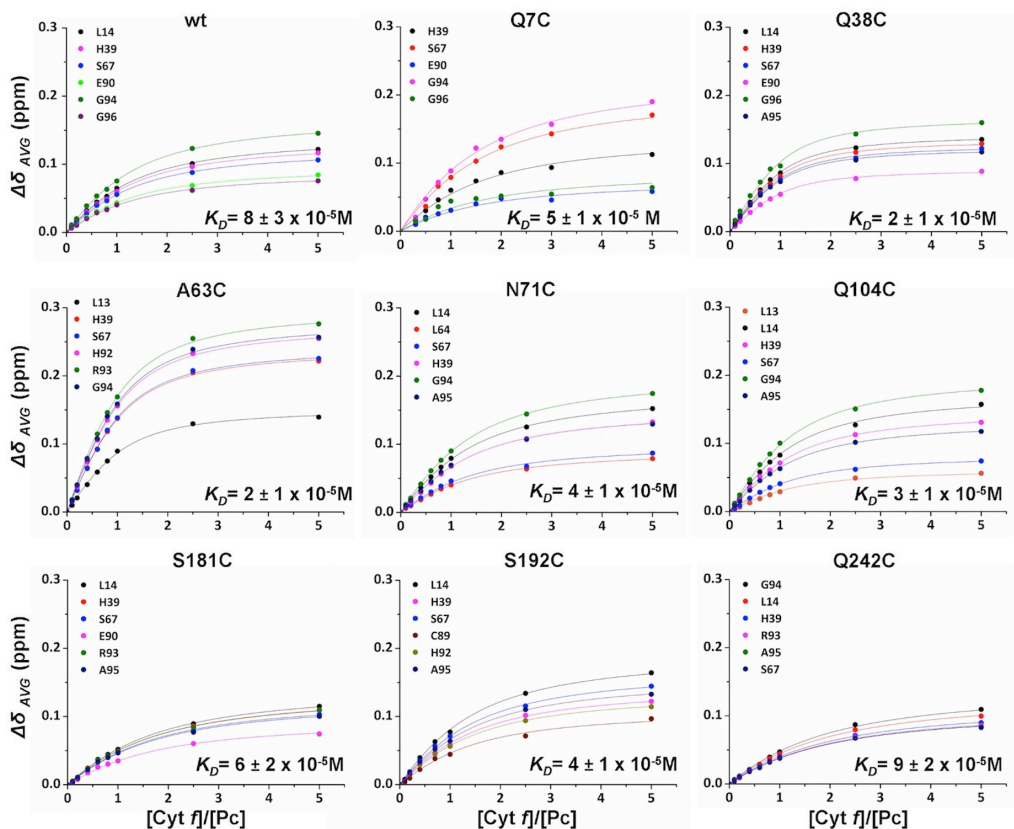
### Introduction of paramagnetic probes on Cyt *f*

To determine the extent of surface area of Cyt *f* being sampled by Pc in the encounter complex, nine cysteine mutants of Cyt *f* were made for the attachment of nitroxyl spin labels. The Cyt *f* mutants were created for the positions Q7, Q38, A63, N71, Q104, Q125, S181, S192 and Q242. The mutation sites Q7, A63, N71, Q104 and S192 are near to the Pc binding site indicated by the solution model,<sup>98</sup> whereas the remaining four mutations are located elsewhere (Figure 3.1, *central panel*). To preserve the original electrostatic potential of Cyt *f*, only polar, uncharged amino acids and one Ala were selected for mutation to cysteine. <sup>15</sup>N Pc was produced with copper and substituted by Zn<sup>II</sup> to eliminate the paramagnetic effect and possible interference of the ET reaction caused by the presence of Cu<sup>II</sup>.<sup>154</sup>



**Figure 3.1.** PRE in the Pc-Cyt *f* complex. *Central panel.* Location of the spin labels (green sticks) modeled on the *Nostoc* sp. PCC 7119 Pc-Cyt *f* complex (PDB entry 1TU2, model 1<sup>98</sup>). Pc is shown in cyan C $\alpha$  trace and the copper as a blue sphere. Cyt *f* is shown as white surface. *Side panels.* The  $I_p/I_d$  ratios (red dots) are plotted against the Pc residue number for each of the spin label position on Cyt *f*.

To test whether the presence of spin label interferes with the Pc-Cyt *f* binding, chemical shift perturbation (CSP) analysis was performed for Pc bound to Cyt *f* wild type and mutants conjugated to the diamagnetic control label MTS. Cyt *f* was thus titrated into a solution of  $^{15}\text{N}$  Zn-Pc and HSQC spectra were acquired at each titration point. The CSP curves for the most affected residues were fitted to obtain a dissociation constant for each complex (Figure 3.2).



**Figure 3.2.** The interaction of *Nostoc* Zn-substituted Pc with wild type Cyt *f* and MTS-conjugated variants. The binding curves for selected residues were fitted globally to a 1:1 binding model.

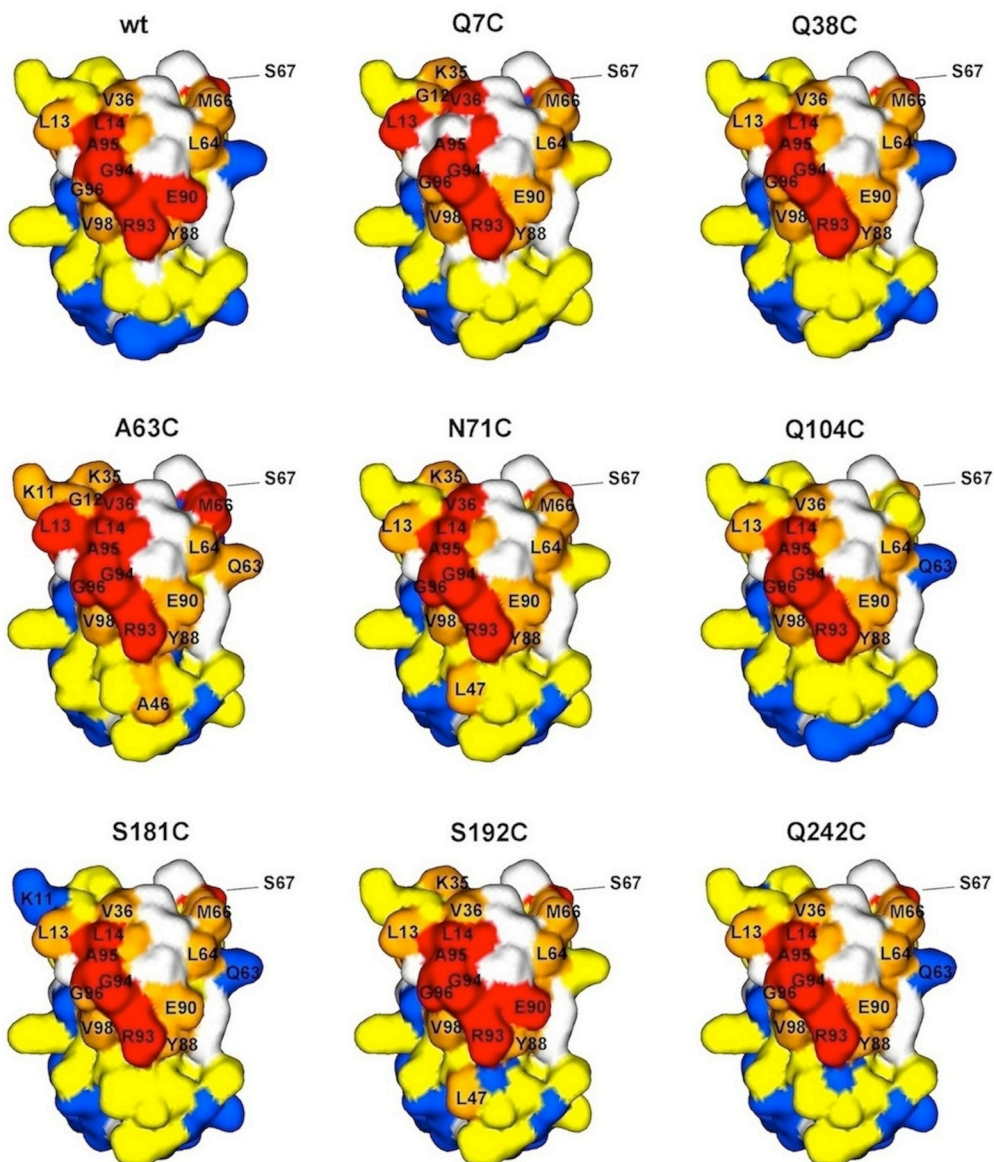
The  $K_D$  values are also listed in Table 3.2.

**Table 3.2.** Dissociation constants of the complexes formed by *Nostoc* Zn-Pc with wild type and MTS-conjugated Cyt *f*. The errors are indicated in parentheses and represent the precision of the fit.

Cyt <i>f</i> mutant	$K_D$ ( $10^{-5}$ M)
wild type	8 (3)
Q7C-MTS	5 (1)
Q38C-MTS	2 (1)
A63C-MTS	2 (1)
N71C-MTS	4 (1)
Q104C-MTS	3 (1)
S181C-MTS	6 (2)
S192C-MTS	4 (1)
Q242C-MTS	9 (2)

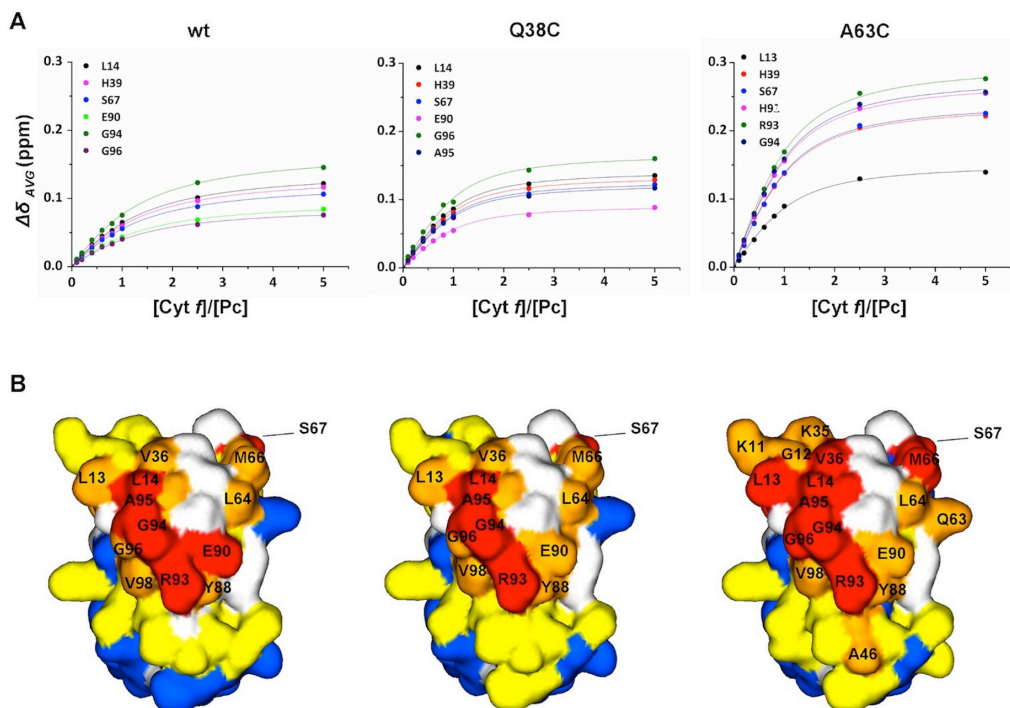
The  $K_D$  value for the wt complex of  $8 \pm (3) \times 10^{-5}$  M is similar to the reported values of  $4 \times 10^{-5}$  M for Cu-Pc<sup>49</sup> and  $6 \times 10^{-5}$  M for Cd-substituted Pc.<sup>49</sup>

Most of Cyt *f* variants yielded  $K_D$  values within the experimental error of that of the wild type. Moreover, the binding maps, obtained by coloring the protein residues according to the size of CSP, present a pattern similar to the wild type, indicating that the mutations and the attachment of MTS at these positions cause no significant effects on the affinity of Pc for Cyt *f* and orientation of Pc with the respect to Cyt *f* in the complex. In each case Pc binds predominantly via the hydrophobic patch and the region around Arg 93 (Figure 3.3), similarly to previously reported data on Cd-substituted Pc in the presence of reduced Cyt *f*.<sup>98</sup>



**Figure 3.3.** Chemical shift perturbation maps of *Nostoc* Zn-substituted Pc in the presence of wild type and MTS-conjugated Cyt *f*, colour-coded on a surface model of Pc (PDB entry 2GIM), with red,  $\Delta\delta_{avg} \geq 0.10$  ppm; orange,  $\Delta\delta_{avg} \geq 0.05$  ppm; yellow,  $\Delta\delta_{avg} \geq 0.02$  ppm; blue,  $\Delta\delta_{avg} < 0.02$  ppm. Prolines and residues with overlapping resonances are in white.

The Q38C-MTS and A63C-MTS Cyt *f* variants exhibited  $K_D$  values of  $2 \pm (1) \times 10^{-5}$  M, which represent a small increase of binding affinity. In the case of Q38C-MTS Cyt *f*, the average size of the CSP and binding map were similar to wild type. Larger perturbations of the resonance positions were observed for binding of Pc to Cyt *f* A63C-MTS than in the other studied cases. The largest CSP were about twice as large as those in the presence of wild type Cyt *f* (Figure 3.4A). Interestingly, the binding map is still similar to that of wt, although the effects of binding are stronger (Figure 3.4B). Under the assumption that CSPs predominantly represent the final state,<sup>31,72</sup> this observation suggests that Pc binds Cyt *f* A63C-MTS in the same orientation as wt Cyt *f* but that the final state is more populated and the encounter state less.



**Figure 3.4.** The interaction of *Nostoc* Zn-substituted Pc with wild type Cyt *f* and Q38C and A63C MTS-conjugated variants. A) Binding curves for selected residues were fitted globally to a 1:1 binding model.<sup>29</sup> B) Chemical shift perturbation maps color-coded on a surface model of Pc (PDB entry 2GIM42), with red,  $\Delta\delta_{avg} \geq 0.10$  ppm; orange,  $\Delta\delta_{avg} \geq 0.05$  ppm; yellow,  $\Delta\delta_{avg} \geq 0.02$  ppm; blue,  $\Delta\delta_{avg} < 0.02$  ppm. Prolines and residues with overlapping resonances are in white.

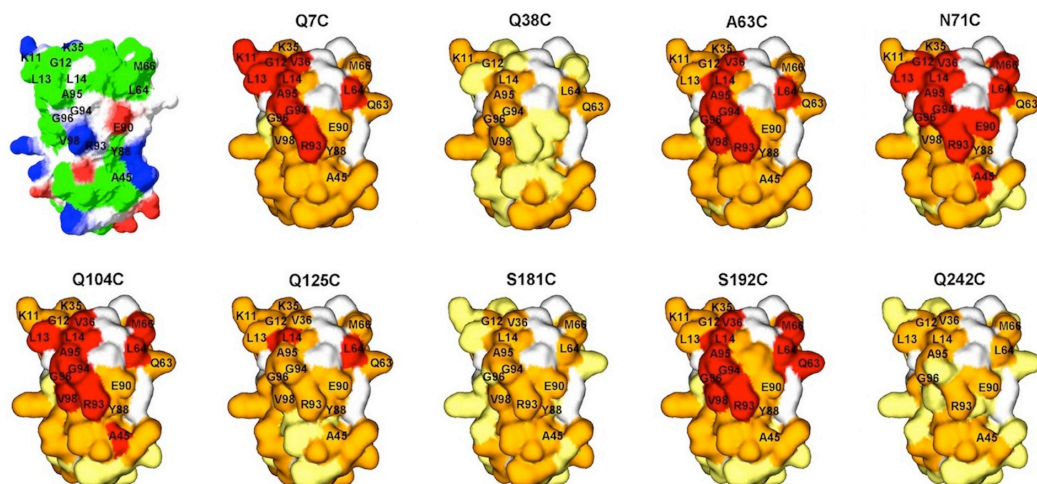
### Paramagnetic relaxation enhancements

To determine whether PREs could arise from unspecific interactions, free MTS (diamagnetic) and MTSL (paramagnetic), with a concentration corresponding to that of spin labeled Cyt *f* ( $66 \mu\text{M}$ , see below), were mixed with  $^{15}\text{N}$ -labeled Zn-Pc ( $200 \mu\text{M}$ ). No line broadening of the resonances was observed in the presence of the paramagnetic spin label, indicating that unspecific interactions with the label are not significant under these conditions.



Then, MTSL was attached to each of the nine Cyt *f* mutants and the tagged proteins were titrated to Pc to a molar ratio of 1:0.3 for Pc:Cyt *f*. At this ratio, the average fraction of Pc bound to Cyt *f* is 24%. The CSP studies indicated that association and dissociation are in the fast exchange regime, so the observed PREs are a weighted average of free Pc, encounter complex and final complex. Thus, the PREs can be extrapolated to the 100% bound state (encounter state + final complex) by dividing by the fraction of bound Pc.

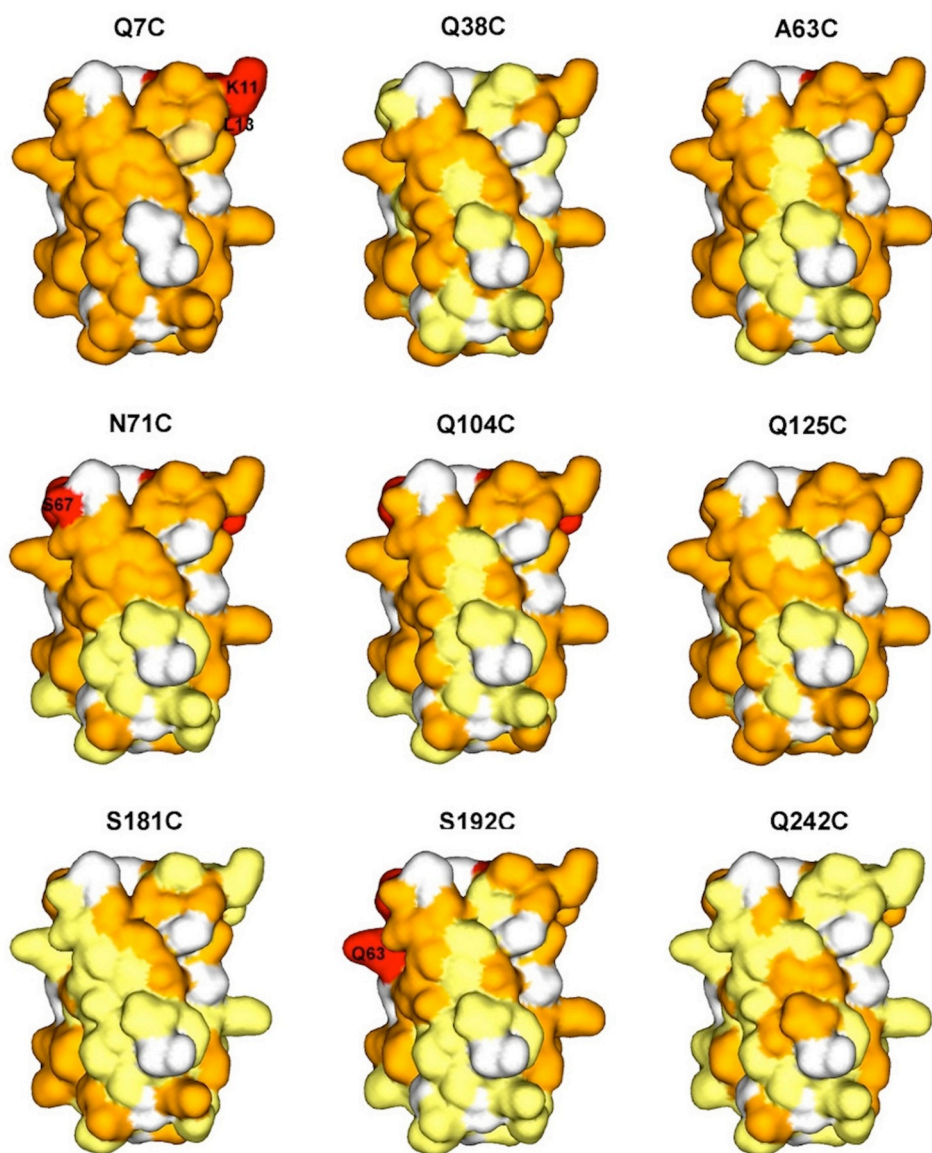
Spin labels attached to Cyt *f* near the binding site for Pc in the final complex, namely at the positions Q7, A63, N71, Q104 and S192, caused an extensive broadening of Pc resonances, reflected in a decrease of the  $I_p/I_d$  ratio, the ratio of peak intensities in the spectra of the paramagnetic and diamagnetic samples (Figure 3.1). Surprisingly, mutants with the spin label located on the backside of Cyt *f* relative to the binding site also yielded moderate to strong PREs. For three of these mutants, Q38C, S181C and Q242C, only moderate effects were observed, whereas the spin label at position 125 caused strong PRE on two Pc residues, L14 and L64, which are part of the hydrophobic patch. From the  $I_p/I_d$  ratios, the PRE ( $\Gamma_2$ ) were determined and extrapolated to 100% bound Pc. The PREs were mapped on the surface of Pc, the front side of the protein is shown in Figure 3.5.



**Figure 3.5.** PRE maps of Zn-substituted Pc bound to MTSL-conjugated Cyt *f*, color-coded on a surface model of the front side of Pc (PDB-entry 2GIM). The sites of spin label attachment are indicated in Figure 3.1, central panel. Red,  $\Gamma_2 \geq 200 \text{ s}^{-1}$ ; orange,  $10 \text{ s}^{-1} < \Gamma_2 < 200 \text{ s}^{-1}$  and yellow  $\Gamma_2 \leq 10 \text{ s}^{-1}$ . Prolines and residues with overlapping resonances are white. Top left, the charge distribution of Pc with negatively and positively charged side chains shown in red and blue, respectively. Hydrophobic side chains are shown in green, polar side chains are in white.

The PRE patterns observed in the presence of spin label attached near the main binding site are very similar. This result is surprising, because the labels are located on different sides of Cyt *f* in the structure of the final complex as shown in Figure 3.1, and thus it is expected that different regions of Pc would be affected. The results suggest that Pc samples an extensive area of Cyt *f* predominantly with one face oriented toward it, since no strong PREs were observed on the back side of Pc (Figure 3.6).



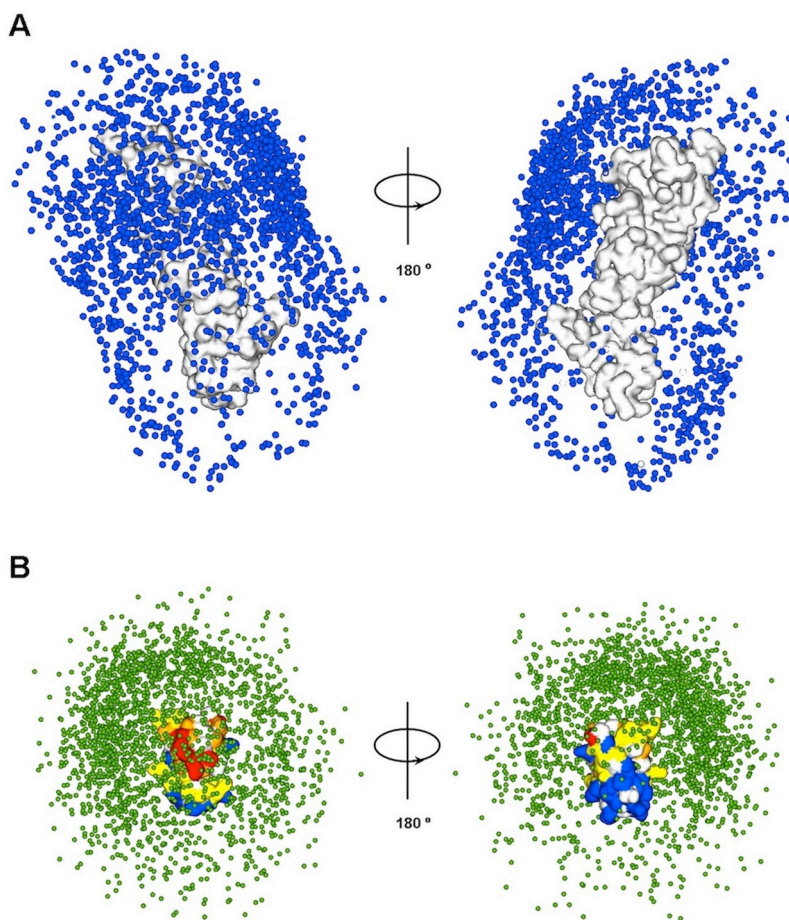


**Figure 3.6.** PRE maps of Zn-substituted Pc bound to MTS-conjugated Cyt *f*, color-coded on a surface model of the back side of Pc (PDB entry 2GIM), the sites of spin label attachment are indicated in Figure 3.1, central panel. Red,  $\Gamma_2 \geq 200 \text{ s}^{-1}$ ; orange,  $10 \text{ s}^{-1} < \Gamma_2 < 200 \text{ s}^{-1}$  and yellow  $\Gamma_2 \leq 10 \text{ s}^{-1}$ . Prolines and residues with overlapping resonances are white.

The maps also resemble the CSP maps in Figures 3.3 and 3.4, confirming that the hydrophobic patch and the region around Arg 93 are the interaction sites of Pc in the complex with Cyt *f*. The comparison of the PRE maps with the charge distribution map of Pc (Figure 3.5, top left) indicates that among the residues, which experience most PRE, only the minority is negatively (E90) or positively (K11, K35 and R93) charged, whereas the majority has a hydrophobic nature. Residues L13, L14, V36, L64, A95 and V98 are part of the hydrophobic patch, which also represents the main binding site and the likely site for ET.<sup>98</sup>

## Monte Carlo simulations

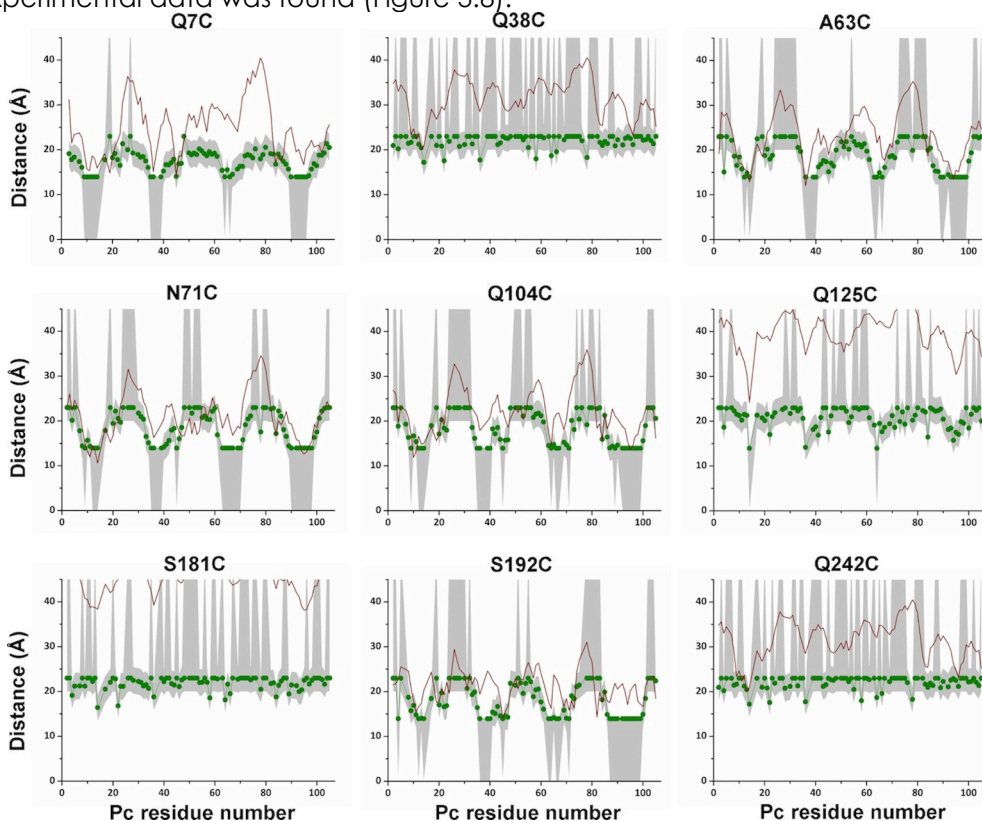
Visualization of the encounter state on the basis of the PRE data is not straightforward, because the data represent a weighted average of all orientations of Pc within the complex, and thus, an infinite number of ensembles can produce the experimental data set. The encounter complex of Cyt c and CcP was successfully visualized by combining PRE data and rigid-body MC simulations,<sup>28</sup> showing that the formation of this encounter complex is solely driven by electrostatic interactions. In MC docking, a mobile protein is docked to a target molecule under the influence of an electrostatic field and MC sampling.<sup>57</sup> In this way, charge-charge interactions represent the only force that brings together the proteins. Following the same rationale, MC simulations for Pc-Cyt *f* complex were performed and the Boltzmann distribution of orientations of Pc in complex with Cyt *f*, and vice versa, were obtained. The centers-of-mass of Pc (Figure 3.7A) and Cyt *f* (Figure 3.7B) are shown as blue and green spheres, respectively, around the interaction partner, shown as surface model.



**Figure 3.7.** Encounter complex of the *Nostoc* Pc-Cyt *f* complex obtained by random selection of 2000 structures from the MC simulations. A) Cyt *f* is shown as a white surface and Pc centers-of-mass are represented by blue spheres. B) Pc is shown as a surface color-coded according to the CSP in the presence of wild type Cyt *f* and Cyt *f* centers-of-mass are represented by green spheres.

In the MC ensemble Pc is widely spread over the surface of Cyt *f* in correspondence with the negative charges distribution. Cyt *f* is over-all negative with most charges in the region surrounding the haem on the large domain and lower charge density on the surface opposite of the haem. These results are inconsistent with the PREs observed in the presence of spin labels located at positions far from the haem, such as Q125 (backside) and S181C (small domain). The distribution of Cyt *f* around Pc is off-center from the CSP map obtained for binding to Cyt *f*. Thus, qualitatively the MC ensembles are not in complete agreement with the experimental data.

The observed PREs result from the contributions of both the encounter and the final complex, whereas the MC ensemble is assumed to represent mostly the encounter state. To separate the PRE contributions of the two states, the PREs from the solution model of the final complex were back calculated and subtracted from experimental PREs assuming a population of the final state ( $f_2$ ) varying from 0 – 1. The resulting PREs represent the encounter state at decreasing population and these were converted into distances and compared with the average distances calculated from the MC ensemble (See Experimental Section for details). Ensembles composed of the 100, 1000, 2500 and 5000 randomly selected structures were considered for the analysis. Independent of the size of the MC ensemble and of the population of the two states, no good match with experimental data was found (Figure 3.8).

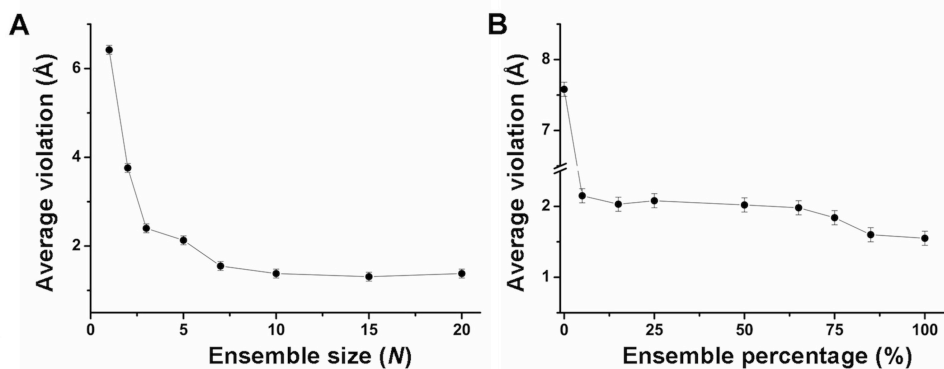


**Figure 3.8.** Comparison between back calculated averaged distances from 2000 randomly selected structures of the MC simulation (red line) assuming  $f_1=1$  and the experimental distances (green circles and lines). The grey areas indicate the error margins of experimental data.

These findings suggest that the formation of the Pc-Cyt *f* encounter complex is not exclusively driven by electrostatic forces. Other contributions must play a significant role and, therefore, MC simulations cannot provide a complete description of this encounter complex.

## Ensemble docking

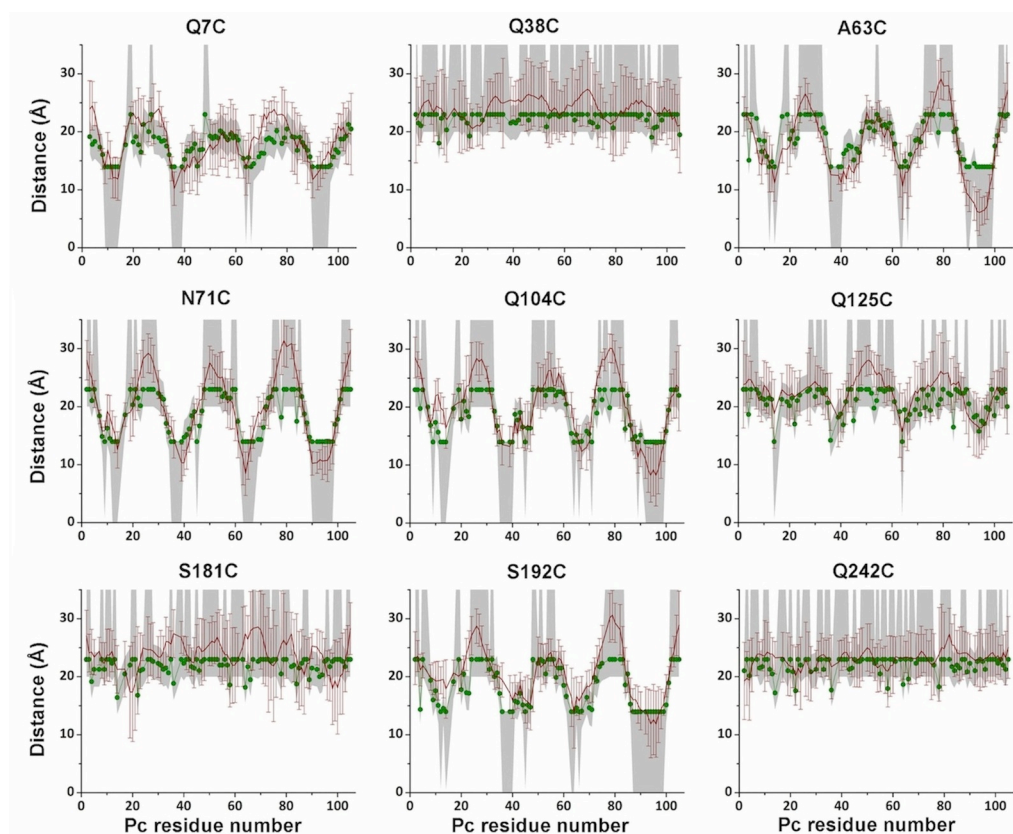
The quantitative interpretation of PRE for the visualization of transient encounter complexes requires the use of PRE restraints in docking calculations.<sup>84</sup> An ensemble of orientations that represents the encounter state and agrees with the data, is generated by docking several conformers of a protein (Pc in this work) simultaneously while minimizing the difference between the back calculated PRE averaged over all conformers and the experimental data. This procedure is repeated many times, and because many different ensembles fit the experimental data, the result is a 'cloud' of orientations.<sup>140,156-161</sup> An ensemble of non-interacting Pc structures was generated and docking calculations were performed with PRE restraints arising from all nine spin labels at the same time. Though variant Cyt *f* A63C-MTSL appeared to have some influence on the equilibrium between encounter state and final complex (see above), it was included in the calculations, because we found that the description of the encounter complex was similar, whether or not these restraints were included in the calculations. In our hands, converting PREs to distances worked best, probably because Pc approaches some spin labels closely. Due to inverse sixth power distance dependence, very small movements at short distance result in very large PRE changes that skew the outcome of the calculations. A repulsion function to avoid steric collision between Cyt *f* and the Pc molecules was the only other interaction included in the calculations. Calculations were performed by varying the size (*N*) of the docked ensemble, which ranged from 1 to 20 copies of Pc. The generated ensembles were evaluated by calculating the average violation over all experimental distances (See Experimental Section). As can be seen in Figure 3.9A large decrease of the average violation was observed, going from a single copy of Pc up to *N* = 7, while further increase of the number of Pc molecules (*N* > 7) did not improve the fitting.



**Figure 3.9.** Plot of the average violation of all experimental distances versus the number (*N*) of Pc copies used in ensemble docking (A) and versus the ensemble percentage included in the restraints for the calculations (B). Error bars represent  $2 \times$  SD of the average violations obtained from three independent calculations performed with  $N=1+7$  and an encounter percentage of 50% ( $f_1=0.5$ ).



Thus, a combined docking of seven Pc copies simultaneously can produce a population distribution that can mostly satisfy the experimental PREs. The solution structure of the final complex was previously reported,<sup>98</sup> taking advantage of intermolecular PCS generated by the paramagnetic Fe<sup>III</sup> of Cyt f on Pc nuclei. However, the results in Figure 3.9A show that a single orientation cannot account for the PRE data. In an earlier study we showed that the model of the final complex is already insufficient to explain the PRE data of only three nearby spin labels.<sup>29</sup> Thus, the PRE data describe a combination of the final state and encounter complex. Following this rationale, calculations were carried out with  $N = 1+7$ , where 1 represents the final complex and 7 the number of copies in the ensemble.<sup>158</sup> The contribution of the final complex to the experimental PREs was subtracted to obtain the PREs of the encounter state only, in analogy to what was done for the MC calculations. Thus, the back calculated PREs from the solution model<sup>98</sup> were subtracted from the experimental values, assuming a population of the final complex ( $f_2$ ) between 0 and 1. The resulting PREs were converted to distances and used for ensemble docking. Figure 3.9B presents the average violation as a function of the fraction of encounter state ( $f_1$ ). The violations unequivocally indicate that the measured PREs do not derive from the final structure alone. Interestingly, a small fraction of encounter state is sufficient to decrease the average violation sharply. The average violation decreases slightly from 2.15 for  $f_1 = 0.05$  encounter complex to 1.55 for  $f_1 = 1$ . In Figure 3.10 the results from the simulation carried out using seven conformers of Pc ( $N = 7$ ) and assuming a pure encounter state ( $f_1 = 1$ ) are shown.

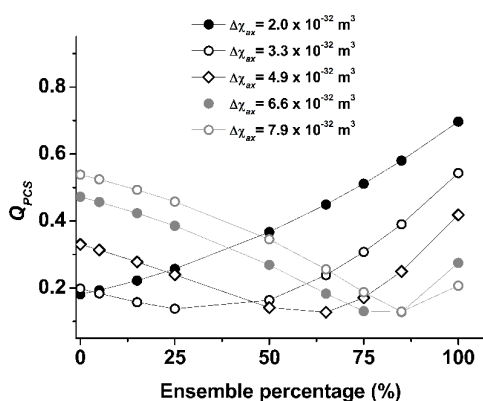


**Figure 3.10.** Ensemble docking. Experimental and back calculated average distances between Pc amide protons and oxygen atoms of MTSL conjugated to Cyt *f* are plotted against the Pc residue number. The green circles and lines represent the experimental distances and the grey areas indicate the error margins. The average distances back calculated from twenty ensembles are shown as a red line with error bars representing the SD. Calculations were performed with  $N=7$  and  $f_1=1.0$ .

The ensemble structures were used to back-calculate the distances between the oxygen atom of MTSL and Pc amide protons (red line) and these were compared with the experimental distances (green circles and line). The generated encounter complex fits the experimental data well, being within the error margins for most residues, although small deviations are observed for some residues at several spin label positions. The considerable standard deviations observed for the distances for the generated ensembles (error bars for red line) are noteworthy, because it is a clear illustration that rather different ensembles of seven Pc copies can fit the large experimental data set equally well, emphasizing the nature of the 'inverse problem' mentioned above.

### Estimation of the fraction of the encounter complex

The structure of the final complex was based on experimental PCS, not on PRE, and consists of a single orientation of Pc relative to Cyt *f*, so by reducing the contribution of the final complex, it is expected that it is easier to create an ensemble that matches the experimental PREs. Therefore, the small decrease of the average violation with increasing fraction of the encounter complex (Figure 3.10B) may not be significant, indicating that the PRE data cannot distinguish between a fraction of the encounter complex of 5% and 100%. Since both PCS and PRE account for minor species present in solution, PCS were back calculated for the generated encounter complexes and compared with the experimental PCS data. To correlate experimental and back calculated PCS, a Q factor (equation 3.3) was calculated for different fractions of final structure ( $f_2$ ) (Figure 3.11).



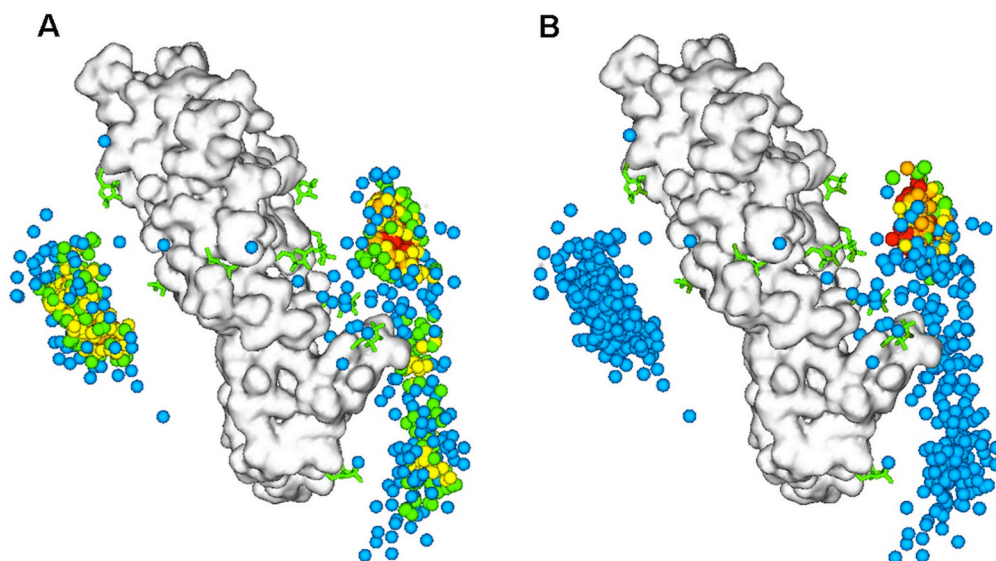
**Figure 3.11.** Q factors calculated for a combination of experimental PCS measured for the specific complex and back calculated PCS from the encounter complex obtained at different percentage of the encounter complex. The Q factors were calculated for different values of a scaling factor for the size of the axial component of the magnetic susceptibility tensor.

The size of the axial component of the magnetic susceptibility anisotropy ( $\Delta\chi_{ax}$ ) of Cyt *f* Fe<sup>III</sup> is not known precisely, so a range of values was tested. For a final complex only ( $f_1 = 0$ ), the best fit of the PCS is found for  $\Delta\chi_{ax}$  values less than 50% of the one derived from EPR data, in line with earlier findings.<sup>98</sup> The low-lying excited states for a low-spin ferric haem explain why the g tensor at 10 K cannot readily be used to calculate the  $\Delta\chi_{ax}$  at 298 K. For all but

very low values of  $\Delta\chi_{\text{ox}}$ , the combination of final complex and encounter ensemble (determined using the PRE ensemble docking) improves the fit between experimental and back calculated PCS. Unfortunately, the lowest Q-value achievable is always about 0.1 (see Figure 3.11), and this minimum is found at increasing values of  $f_1$  for larger  $\Delta\chi_{\text{ox}}$  values. Therefore, establishing the encounter state fraction on the basis of PCS is not possible as long as  $\Delta\chi_{\text{ox}}$  cannot be established. For comparison,  $\Delta\chi_{\text{ox}}$  for Cyt c is about  $3.3 \times 10^{-32} \text{ m}^3$ .<sup>74</sup> If  $\Delta\chi_{\text{ox}}$  of Cyt f would be the same, the fraction  $f_1$  would be 0.25.

### Visualization of the encounter complex

To represent the encounter complex an ensemble of 144 solutions, for a total of 1008 Pc molecules was generated ( $N=7$ ;  $f_2=0$ ). As shown in Figure 3.13 Pc visits a large area of Cyt f. The density plot (Figure 3.12A) shows the centers-of-mass of Pc colored according to the density, with red and blue representing the most and least populated positions, respectively.



**Figure 3.12.** Encounter complex of the Pc-Cyt *f* complex. Cyt *f* is shown as a white surface and spin labels as green sticks. Pc centers-of-mass are represented by spheres. In panel A, Pc centers of mass are color-coded to indicate the density of the distributions, decreasing from red to blue. Densities were determined by counting the number of neighbors within 2.5 Å. In panel B, Pc centers-of-mass are color-coded to indicate the distance between Cu in Pc and Fe in Cyt *f*, increasing from red to blue (red  $\leq 16$  Å; orange  $\leq 18$  Å; yellow  $\leq 20$  Å; green  $\leq 22$  Å; blue  $> 22$  Å).

Two defined encounter locations can be distinguished. The first one is close to the binding site in the final complex, and the second on the other side of Cyt *f*, opposite to the binding site in the final complex. These locations are discussed further below. It should be noted that even with nine spin labels it was not possible to sample the encounter state at all locations on the Cyt *f* surface sufficiently. The cytochrome is a very elongated protein and from the spin label positions in Figure 3.1 (central panel), the regions that were not sampled can be identified. It

cannot be excluded that the area sampled in the encounter complex is still larger than the surface area covered in our experiments. Nevertheless, from the current analysis, it is obvious that Pc samples quite a significant fraction of the surface of its partner.

It is thought that in ET systems the formation of the encounter complex reduces the dimensionality of the search for the active site and increases the probability of ET.<sup>21</sup> To determine which of the encounter complex orientations were compatible with rapid ET, the distances between Cu, in Pc, and Fe, in Cyt *f* were calculated and the centers-of-mass of Pc were color-coded accordingly (Figure 3.12B). Structures with Cu-Fe distance  $\leq 16$  Å (red dots), thus in principle suitable for fast ET,<sup>162</sup> are exclusively located in front of the haem, in the vicinity of the final structure.

## Discussion

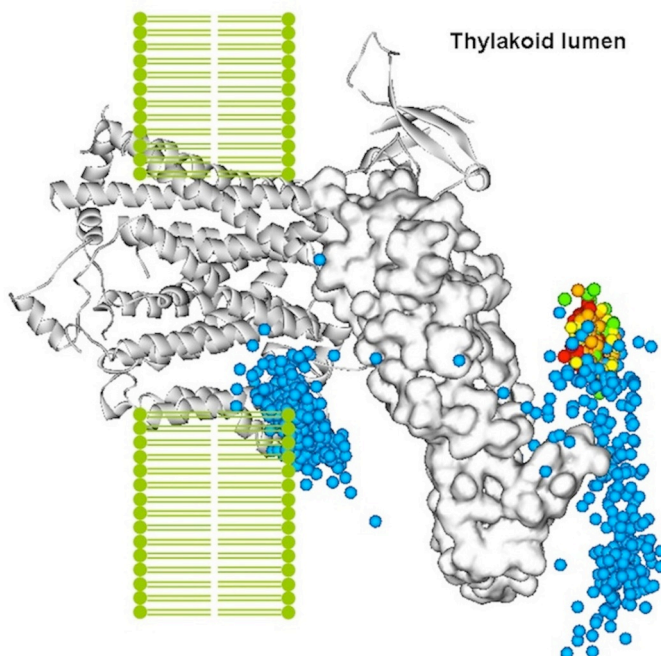
The structure of Pc-Cyt *f* final complex from the cyanobacterium *Nostoc* sp. PCC7119 was solved by NMR on the basis of PCS data.<sup>98</sup> The results were consistent with a conformation that accounts for the ET reaction between the two proteins. A recent PRE study<sup>29</sup> on the same system demonstrated that the complex exists partly in a dynamic ensemble of orientations. In this study we characterized the encounter complex of Pc and Cyt *f* by attaching the spin label MTSL to nine sites on Cyt *f*, one at a time, and measuring PRE of the backbone amide protons of Pc. MTSL is a small hydrophobic molecule and its presence in particular region of the protein could influence the complex formation with the interaction partner. Some interference by the spin label in the Pc-Cyt *f* complex formation was observed only at the position A63, but exclusion of the data of this spin label had little influence on the results. PREs were mainly observed for spin labels situated near to the binding site indicated by the PCS based model, although effects were also measured for the remaining spin label positions. The detection of widespread PREs clearly indicates that Pc samples a large surface area. The similarity of PRE patterns observed in the presence of spin labels close to the binding site (Figure 3.5) suggests that Pc is approaching Cyt *f* with the residues forming the hydrophobic patch and the region around R93. Independent of the location of the paramagnetic probes, the residues that experience the strongest PREs reside in these regions, implying that Pc is always oriented in the same way toward Cyt *f*.

The general model of protein association states that the formation of the encounter complex is an electrostatically driven process.<sup>21</sup> On the basis of this assumption, computational approaches, such as BD and MC docking, have been developed to describe the encounter complex as end-point of electrostatic steering towards the interacting partners.<sup>57,99</sup> These methods successfully described the encounter complex in cases of protein association guided by charge-charge interactions.<sup>28,99,100,109,137,163</sup> The MC simulations of the Pc-Cyt *f* encounter complex did not produce a result in accordance with the experimental data. It is important to note that despite the overall electrostatic potential of Pc and Cyt *f* being positive and negative, respectively, Pc shows a



defined charge distribution, but Cyt *f* has a diffuse surface charge. For interaction partners with weak charge complementarity, it has been demonstrated that electrostatics do not play an exclusive role in protein association, but desolvation is the main driving force in binding.<sup>138</sup> Furthermore, the interface of the encounter complex can bury a significant solvent-accessible surface area, suggesting a role for hydrophobic interactions in the stabilization of the encounter complex.<sup>27</sup> In the Pc-Cyt *f* complex from the cyanobacterium *Ph. laminosum*, the association is dominated by hydrophobic interactions and only hydrophobic contacts stabilize the final complex.<sup>54</sup> In the *Nostoc* Pc-Cyt *f* system, the specific binding interface and the putative ET sites on both proteins comprises hydrophobic regions,<sup>98</sup> similar in size and composition to the *Ph. laminosum* counterparts, but electrostatic forces play a significant role in the association reaction<sup>8,66</sup> and in the orientation of the final complex.<sup>49</sup> Since already in the encounter complex Pc is oriented toward Cyt *f* with its hydrophobic patch, we propose that during the initial stage of the encounter complex formation, long-range electrostatics pre-orient Pc towards Cyt *f* and hydrophobic interactions keep Pc close to the surface of Cyt *f* and help to stabilize the encounter state.

The simulation of the encounter complex on the basis of the experimental PREs resulted in two distinct encounters. One is located at the side of the specific binding surface of Cyt *f*, the other one at the opposite side. In Figure 3.13 the encounter complex is superimposed with the *b<sub>6</sub>f* complex as it is found in the thylakoid membrane, with the Pc centers-of-mass colored on the bases of the Cu-Fe distance.



**Figure 3.13.** Encounter complex of the Pc-Cyt *f* complex superimposed on the structure of the *b<sub>6</sub>f* complex (PDB entry 2ZT9), embedded in the thylakoid membrane. *b<sub>6</sub>f* complex is a dimer, but only a monomer is shown. Cyt *f* is shown as a white surface and Pc centers-of-mass are represented by spheres, which are color-coded to indicate the distance between Cu in Pc and Fe in Cyt *f*, like in Figure 3.12B. The remaining components of the *b<sub>6</sub>f* complex are shown as ribbons.

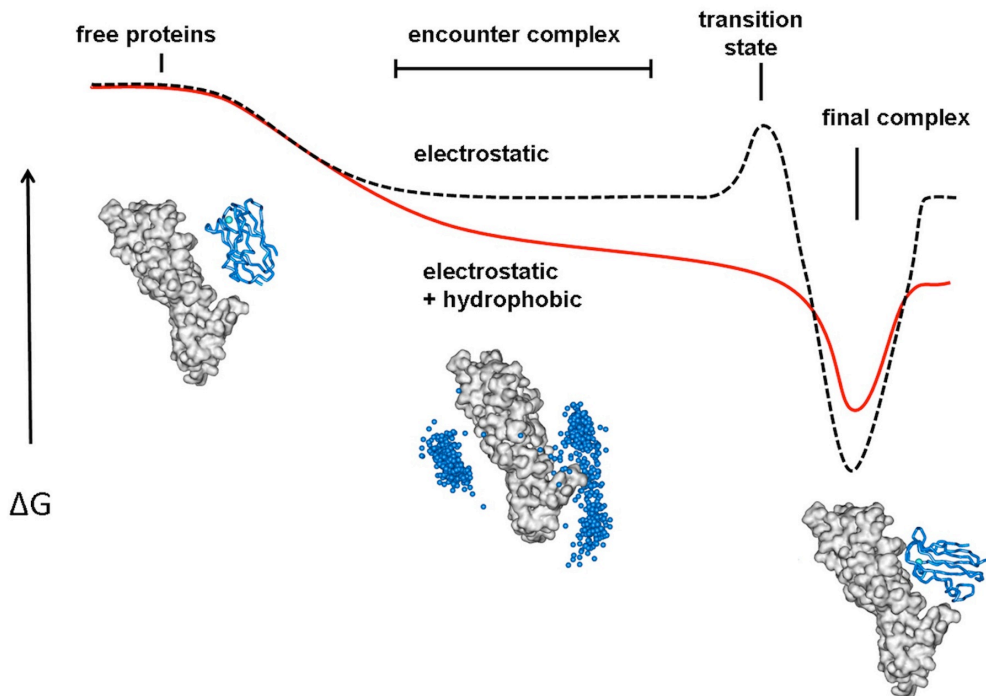
The encounter complex located opposite to the ET site places Pc inside the thylakoid membrane. The Cyt *f* soluble part was shown to be only lightly flexible in the thylakoid lumen,<sup>164</sup> suggesting that Pc cannot interact with Cyt *f* at this site under the physiological conditions. The observation of encounters at this site is likely an artifact due to the use of the soluble part of Cyt *f* in isolation and not embedded in the thylakoid membrane. The encounters located in front of the binding site diffusely extend from the haem to the end of the small domain of Cyt *f*. In other studies, diffusive encounter complexes have also been described.<sup>165</sup> Either the partners sample large areas or form encounters at several more defined regions on the surface of the partner.<sup>24,30,136,166</sup> Due to the diffuse distribution of negative charges on Cyt *f*, Pc probes a large part of the surface, instead of being attracted to specific sites by localized charges.

The formation of an encounter complex in many cases does not lead to a productive association, hence fruitful and futile encounter complexes can be distinguished.<sup>24</sup> The encounter ensemble shows a high density in the region directly in front to the haem, suitable for ET (red dots in Figure 3.12B). These orientations can obviously be considered fruitful encounters. For many other encounters, the distances between the redox centers are unfavorable for ET, but not all of these are futile. The further away from the ET active site Pc binds the less chance it has to diffuse to an ET active orientation before dissociation from Cyt *f*. Thus, the distinction between fruitful and futile encounter is a gradual one and it is difficult to tell when these complexes can rearrange into a productive orientation.

The population of the encounter state, in relation with the final state population, significantly varies among different complexes. In some non-ET complexes the population of the encounter state has been determined to be 10%,<sup>27,140</sup> in the ET complex Cyt *c*- Cyt *c* peroxidase it has been shown to be 30%.<sup>28</sup> For Pc-Cyt *f* complex from *Nostoc* it was not possible to establish the fraction accurately. Complexes, which only exist in the encounter state have also been described for myoglobin-cytochrome *b<sub>5</sub>*<sup>72</sup> and adrenodoxin-cytochrome *c*.<sup>30</sup> In *Nostoc*, the existence of the complex as merely an encounter state seems unrealistic. The size of CSP in the wild type complex<sup>98</sup> and in the presence of spin labeled Cyt *f* also in this study is indicative of the formation of a stereo-specific complex. Moreover, PCS from the haem generated a converged structure stabilized in a defined orientation,<sup>98</sup> in which hydrophobic contacts and electrostatic interactions are optimized within the structure. The sensitivity of this approach to lowly populated states is limited, but it clearly demonstrates the existence of a final state.

At the same time, the diffuse nature of the encounter complex on Cyt *f* surface suggests that in this system a final orientation may not be a fundamental requirement for the functionality of the complex. In fact, the efficient turn-over required for rapid ET through the photosynthetic redox chain<sup>167</sup> precludes the formation of a tight complex and favors the conditions for the existence of the ET active complex in multiple orientations<sup>4</sup> to enhance the probability of ET.<sup>21</sup> Against this background the finding that hydrophobic contacts play a role not only in the final complex, but also in the encounter complex is interesting. It blurs the distinction between both states and would allow for a smooth transition from encounter to final complex via a gradual optimization of the hydrophobic contacts in the interface (Figure 3.14, solid line). This model of protein complex

formation allows for more rapid formation of the final complex than in the case of a model with an activation energy barrier between both states (Figure 3.14, dashed line), used for other protein complexes.<sup>24</sup>



**Figure 3.14.** Free energy diagrams of proteins association pathways with high (dashed black line) and no (solid red line) energy barrier for the transition state from the encounter to the final complex.

In conclusion, we speculate that the hydrophobic interactions in the encounter complex may ensure a relative flat energy landscape during all phases of association, without a clear distinction between the encounter and the active complex. A flat energy landscape ensures rapid transitions between all states, which is relevant for systems that do not require a high degree of specificity, such as ET complexes.

