

A Founder Mutation of the *MSH2* Gene and Hereditary Nonpolyposis Colorectal Cancer in the United States

Henry T. Lynch, MD

Stephanie M. Coronel, MPH

Ross Okimoto, BS

Heather Hampel, MS, CGC

Kevin Sweet, MS, CGC

Jane F. Lynch, BSN

Ali Barrows, BS

Juul Wijnen, PhD

Heleen van der Klift, MS

Patrick Franken, HLO

Anja Wagner, PhD, MD

Riccardo Fodde, PhD

Albert de la Chapelle, MD, PhD

THE ANNUAL WORLDWIDE incidence of colorectal cancer is estimated at 944 717 cases,¹ of which about 10% (94 472 cases) are estimated to be hereditary.^{2,3} Hereditary nonpolyposis colorectal cancer (HNPCC), also known as Lynch syndrome, is the most common form of hereditary colorectal cancer, accounting for somewhere between 2% (18 900 cases) and 7% (66 130 cases) of the annual worldwide incidence of colorectal cancer.⁴

Most tumors from patients with HNPCC harbor a characteristic abnormality of an instability at short tandem-repeat sequences, ie, microsatellites, in the genome.⁵⁻⁷ Cancer susceptibility in patients with HNPCC is believed to be caused by malfunction of postreplicative mismatch repair, as evidenced by inherited mutations in 1 of 5 different mis-

Context Hereditary nonpolyposis colorectal cancer (HNPCC), also known as Lynch syndrome, is caused by mutations in the mismatch repair genes and confers an extraordinarily high risk of colorectal, endometrial, and other cancers. However, while carriers of these mutations should be identified, counseled, and offered clinical surveillance, at present the mutations are not tested for in mutation analyses.

Objective To describe the prevalence of a large genomic deletion encompassing exons 1 to 6 of the *MSH2* gene that is widespread in the US population as a result of a founder effect.

Design, Setting, and Patients Ongoing genealogical and historical study conducted to assess the origin and spread of an *MSH2* mutation previously identified in 9 apparently unrelated families with putative HNPCC and living in widely different geographic locations in the United States.

Main Outcome Measures Classification of family members as carriers or noncarriers of the *MSH2* mutation; spread of the mutation across the continental United States.

Results To date, 566 family members of the 9 probands have been identified to be at risk and counseled; 137 of these have been tested, and 61 carry the founder mutation. Three families have been genealogically shown to descend from a German immigrant family that arrived and first settled in Pennsylvania in the early 1700s. Movements of branches of the family from Pennsylvania through North Carolina, Alabama, Kentucky, Missouri, Iowa, Nebraska, Utah, Texas, and California have been documented, and carriers of the mutation have already been diagnosed in 14 states. In contrast, the deletion was not found among 407 European and Australian families with HNPCC.

Conclusion The postulated high frequency and continent-wide geographic distribution of a cancer-predisposing founder mutation of the *MSH2* gene in a large, outbred (as opposed to genetically isolated) population, and the ease with which the mutation can be detected, suggest that the routine testing of individuals at risk for HNPCC in the United States should include an assay for this mutation until more is learned about its occurrence.

JAMA. 2004;291:718-724

www.jama.com

Author Affiliations: Department of Preventive Medicine, Creighton University School of Medicine, Omaha, Neb (Dr H. T. Lynch; Mss Coronel, J. F. Lynch, and Barrows; and Mr Okimoto); Human Cancer Genetics Program, Comprehensive Cancer Center, The Ohio State University, Columbus (Ms Hampel, Mr Sweet, and Dr de la Chapelle); Department of Human Genetics, Sylvius Laboratory, Leiden University, Leiden, the Netherlands (Drs Wijnen and Fodde, Ms van der Klift, and Mr Franken); and

Department of Clinical Genetics, Erasmus University Medical Centre, Rotterdam, the Netherlands (Dr Wagner). Mr Franken and Dr Fodde are currently affiliated with the Department of Pathology, Josephine Nefkens Institute, Erasmus University Medical Centre.

Corresponding Author: Henry T. Lynch, MD, Department of Preventive Medicine, Creighton University School of Medicine, 2500 California Plaza, Omaha, NE 68178 (htlynch@creighton.edu).

match repair genes: *MSH2*, *MLH1*, *MSH6*, *MLH3*, and *PMS2*. More than 400 different pathogenic mutations have been registered in the international database of mutations in HNPCC kindreds (available at <http://www.nfdht.nl>). Detection of mutations is usually performed by sequencing. In the context of the present report it is noteworthy that by sequencing and other commonly used genetic testing methods, 1 class of mutations, ie, large structural rearrangements such as large deletions, is difficult to detect. These mutations can be readily detected by Southern hybridization,⁸ multiplex ligation-dependent probe amplification,⁹ and after conversion to haploidy.^{10,11}

Among patients who meet the diagnostic criteria for HNPCC, about 40% to 60% test positive for mutation, demonstrated by a germline mutation in 1 of the DNA mismatch repair genes; more than 90% of these mutations are in *MLH1* or *MSH2*, while approximately 10% are *MSH6* mutations.¹² Up to 15% of all disease-causing mutations in patients with HNPCC are believed to be large deletions, especially in *MSH2*.⁸

A founder mutation arises in a single individual whose offspring each have a 50% chance of inheriting the mutation. The fate of the mutation in the subsequent generations will depend on 2 main factors, namely, selection and chance. If the mutation leads to selective advantage, it may increase in frequency. If it leads to selective disadvantage, eg, reduced reproduction, it may disappear.

In the absence of selection, chance events known as genetic drift can greatly influence its prevalence in the population. Typically the incidence of founder mutations can be increased at population bottlenecks. If, for instance, a mutation occurs with a low incidence (eg, 1:1000) in a mixed population, and if 10 people were to emigrate from this population to an uninhabited island, and if 1 of the 10 were to have the mutation, then a 100-fold enrichment would occur at the founding. In the new population, genetic drift will determine whether the frequency

of 1:10 at the founding increases or decreases, or perhaps remains unchanged. The more isolated the population, the more pronounced will be the effects of genetic drift. For these reasons most founder mutations of this type have been described in populations that have remained isolated while growing rapidly. Prime examples are the Finns ("founded" [ie, the main bottleneck occurred] approximately 2000 years ago¹³), Icelanders (approximately 1100 years ago¹⁴), Ashkenazi Jews (600-800 years ago¹⁵), and French Canadians and Amish (250-400 years ago¹⁶). Hereditary breast cancer in the Ashkenazi Jews, with cancer-predisposing founder mutations in *BRCA1* (185delAG and 5382insC) and *BRCA2* (6174delT), is a recent well-published example of a founder effect.^{17,18}

At least 5 examples of founder mutations have been described in cases with HNPCC. In Finns, a 3.5-kilobase (kb) deletion of *MLH1* comprising exon 16 accounts for as many as half of all cases of HNPCC, and a splice-site mutation affecting exon 6 of *MLH1* accounts for 15% to 20% of all cases.¹⁹ A splice-site mutation affecting exon 5 of *MSH2* was first detected in a large kindred in Newfoundland²⁰ and later turned out to be widespread in that population through a founder effect.²¹ Interestingly, this mutation has been observed in many other populations as well, and actually arises de novo with appreciable frequency^{22,23}; thus, this mutation is a recurrent one worldwide but its spread in Newfoundland is by the founder mechanism. A nonsense mutation leading to a stop codon in exon 19 of *MLH1* is widespread in the Valais region of Switzerland.²⁴ A fifth founder mutation, 1906G→C in *MSH2*, is a major contributor to HNPCC in the Ashkenazi Jewish population, where it may account for as many as one third of all cases.²⁵

The identification of a deletion encompassing exons 1 to 6 of the *MSH2* gene in 7 seemingly unrelated families with HNPCC from Creighton University's hereditary cancer resource suggested the existence of a founder mutation in the United States and prompted

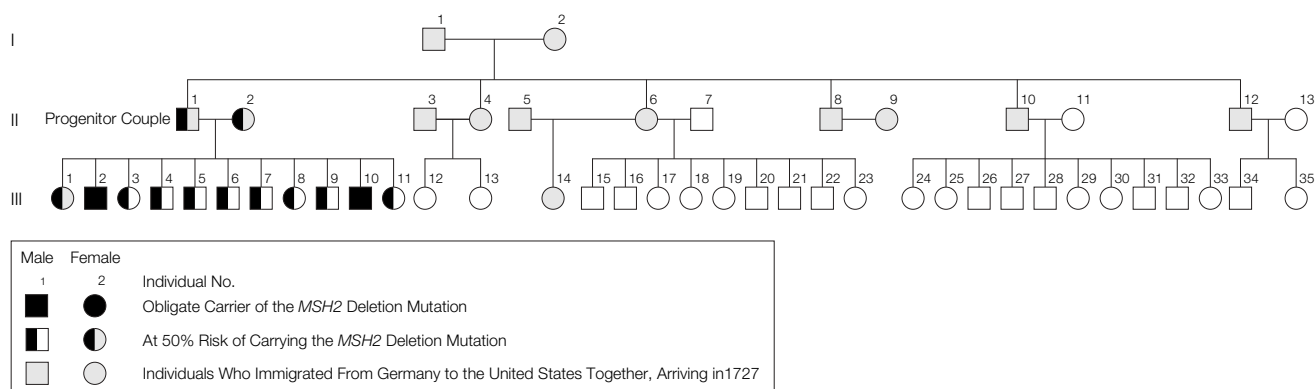
the screening of an additional cohort of 11 families with HNPCC from Ohio State University's resource, where this deletion was identified in 2 additional cases.²⁶ Because of the extremely high risk for colorectal (80%-85%), endometrial (56%), ovarian (12%), and a number of other cancers in patients with HNPCC, it is desirable to diagnose carriers of these mutations in order to identify high-risk individuals needing targeted clinical surveillance. Our purpose is to describe the existence of a mutation that is widespread in the US population as a result of a founder effect and its implications for the early detection and prevention of cancers associated with HNPCC.

METHODS

This study was approved by the institutional review boards of Creighton University and the Ohio State University. Family members provided informed consent for separate institutional review board-approved colon cancer genetics studies at each participating institution. Genealogical, medical, and pathological reports were collected for members of the 9 extended families over a period of more than 30 years. Each family displayed inheritance patterns of cancer consonant with HNPCC, in concert with the presence of the mutation.

Genealogical Studies

Available key family members from each of these mutation-verified HNPCC families were personally interviewed when possible and/or completed detailed family history questionnaires. In order to decipher the relationships among the 9 families, genealogical records from 3 databases were intensively searched: the Church of Jesus Christ of Latter-Day Saints Family Historical Library, Ancestry.com, and a German family genealogy database. These databases contained information from individual family annals as well as from federal and state census records. Dates of birth, death, and marriage were recorded, as were places of family origin, temporary or permanent residential settlements, west-

Figure 1. First 3 Generations of the *MSH2* Deletion Founder Family in the United States

It is currently unclear from which parent III-2 and III-10 inherited the mutation. However, inheritance from II-1 would indicate that his siblings and their offspring are also at risk.

ward migration patterns, immigration records, land ownership, personal wills, and religious affiliations.

Haplotype Analysis

The exact breakpoints of the *MSH2* deletion mutation have been described previously.²⁶ By the detailed nucleotide nomenclature the deletion can be characterized as g.5330483_5349647del19165 (NT034483). The 5' breakpoint is 1 kb upstream of exon 1 and the 3' breakpoint is in intron 6.^{26,27} Totally the deletion comprises 16 kb of genomic DNA, including exons 1 to 6. The fact that the breakpoint was exactly the same even at the nucleotide level in the different families is evidence that the mutation has a common origin. In addition, we used numerous polymorphic markers to construct haplotypes that proved the common origin of the mutation in all 9 families.²⁶

Detection Method

As a diagnostic tool, polymerase chain reaction analysis of genomic DNA produces a unique 1.7-kb band when primers 5'-GCTGAATTAGGTTTTGGAAC-3' and 5'-AAGCATCACAGTTACTGTTG-3' are used. The experimental conditions are as recommended in the Expand Long Template polymerase chain reaction system (Roche Diagnostics Corp, Indianapolis, Ind).

Southern Blot Analysis

Southern blot analysis of *MSH2* was performed as previously described²⁶ with *Xba*I, *Hind*III, *Nsi*I, *Eco*RI, and *Bcl*I genomic DNA digests followed by hybridization with 3 overlapping cDNA probes (encompassing exons 1-7, exons 7-12, and exons 10-16). The American founder deletion is characterized by an aberrant *Eco*RI fragment of approximately 14 kb and by an approximately 13-kb *Bcl*I aberrant band, after hybridization with the *MSH2* probe encompassing exons 7 to 12.

European and Australian HNPCC Studies

A total of 407 European and Australian families with HNPCC were screened for the presence of the American founder deletion. The Dutch HNPCC cohort (250 families) was collected through the Dutch Foundation for the Detection of Hereditary Tumors and through various Dutch clinical genetics centers. The European cohort (99 families; 58 residing in Germany and 41 residing elsewhere) was made up of patients with HNPCC participating in the Concerted Action Polyp Prevention 2 (CAPP2) study.²⁸ The remaining cohorts were made up of families from Italy (n=12), Australia (n=31), and Norway (n=15). Of the 407 European and Australian families, 37 had large genomic rearrangements; none had the American founder mutations. The HNPCC families de-

scribed above were selected because they tested negative for point mutations in *MSH2*, *MSH6*, and *MLH1* after denaturing gradient gel electrophoresis analysis or direct sequencing.^{8,26,29,30}

RESULTS

During the genetic testing portion of our family studies process, it was discovered that 9 families (Families A-I) from across the United States shared the identical deletion of exons 1 through 6 of the *MSH2* gene and a unique haplotype of the region. Currently, a total of 566 high-risk individuals from these 9 families have been ascertained, and DNA testing for the mutation has been performed in 137 individuals. Of these, 61 individuals, residing in 14 states, were carriers of the mutation, while the remaining 76 individuals did not carry it.

In concert with genealogical studies that identified geographic and ancestral relationships, we established a 13-generation lineage that was ultimately traced back to a single couple, the progenitors, who migrated from Hesse, Germany, and settled in Pennsylvania in the early 1700s. The first 3 generations of this family are illustrated in FIGURE 1. The progenitor couple (II-1 and II-2) had 11 children, 2 of whom (III-2 and III-10) have been determined to be obligate carriers of the *MSH2* deletion based on the direct links of Family E, F, and G to their descendants.

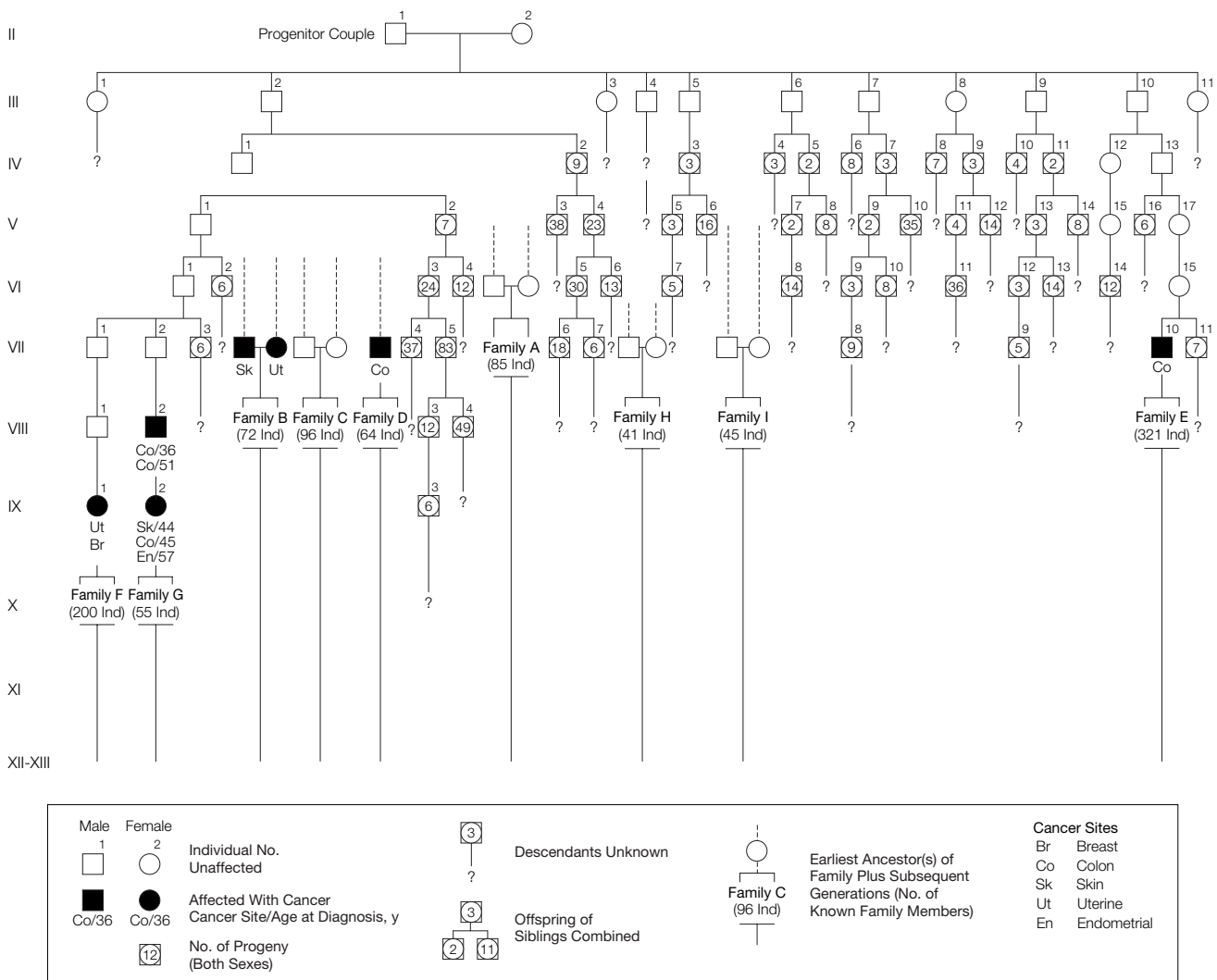
Currently, it is unclear from which parent individuals III-2 and III-10 inherited the mutation (Figure 1). However, if it was inherited from their father (II-1), there are even more at-risk individuals in the United States, since the progenitor couple (II-1 and II-2) immigrated from Germany with his parents and 5 siblings but none of her (II-2) relatives. Figure 1 shows the large number of possible mutation carriers in generation II under the assumption that II-1 was the carrier. FIGURE 2 gives an idea of the

truly enormous numbers of potential mutation carriers irrespective of whether II-1 or II-2 was the carrier parent.

At minimum, it is clear that the 9 siblings of the 2 obligate carriers were at 50% risk for inheriting the founder mutation. Furthermore, as illustrated in Figure 2, the obligate carriers (III-2, III-10) had 12 known children, each of whom were also at 50% risk; the 9 at-risk siblings (III-1, III-3 through III-9, III-11) had 35 known children, each of whom had a 25% chance of inheriting the mutation.

Figure 2 also depicts the remainder of the genealogical record emanating from the progenitor couple. It not only illustrates the direct lineal relationships that were established connecting families E, F, and G to our putative progenitors, but also illustrates the extensive number of additional family members potentially at high risk for carrying the *MSH2* deletion. The remaining 6 families, while harboring the founder mutation, have not been unequivocally linked genealogically. These families may descend from

Figure 2. Pedigree of the Founder HNPCC Family



This pedigree depicts the potential number of individuals at risk for carrying the mutation. For example, 9 of the 10 children of individual III-2 had a total of 61 children, of which 23 had 43 children. HNPCC indicates hereditary nonpolyposis colorectal cancer; ind, individual(s). Dashed lines indicate earlier generations that were unable to be traced.

female family members who married and whose descendants have a variety of surnames that have been difficult to trace with certainty.

Thus, while we cannot yet provide the established lineal or collateral relationships connecting families A through D, H, and I to our progenitors, we do provide evidence of their ancestral interactions with respect to time, geographical location, and genetic mutation.

FIGURE 3 is a succinct algorithm that depicts the relative time frame that 8 of the 9 families coexisted with the pro-

genitor couple or with their descendants. Currently, the time frame when family H coexisted with the progenitor couple is unclear.

The map of the United States with the respective migration pattern of each of the 9 HNPCC families is depicted in FIGURE 4. This map denotes the migration patterns of the descendants of the progenitors. Note that families A, B, C, D, H, and I reside in regions along the migratory path.

To further test the hypothesis that this deletion is an American founder

mutation, we screened 407 European and Australian families with HNPCC. Southern analysis of the *MSH2* gene among these families did not reveal the presence of the aberrant *EcoRI* and *BclI* fragments characteristic of the American founder mutation. However, 24 other *MSH2* deletion types accounting for 37 cases were identified.

COMMENT

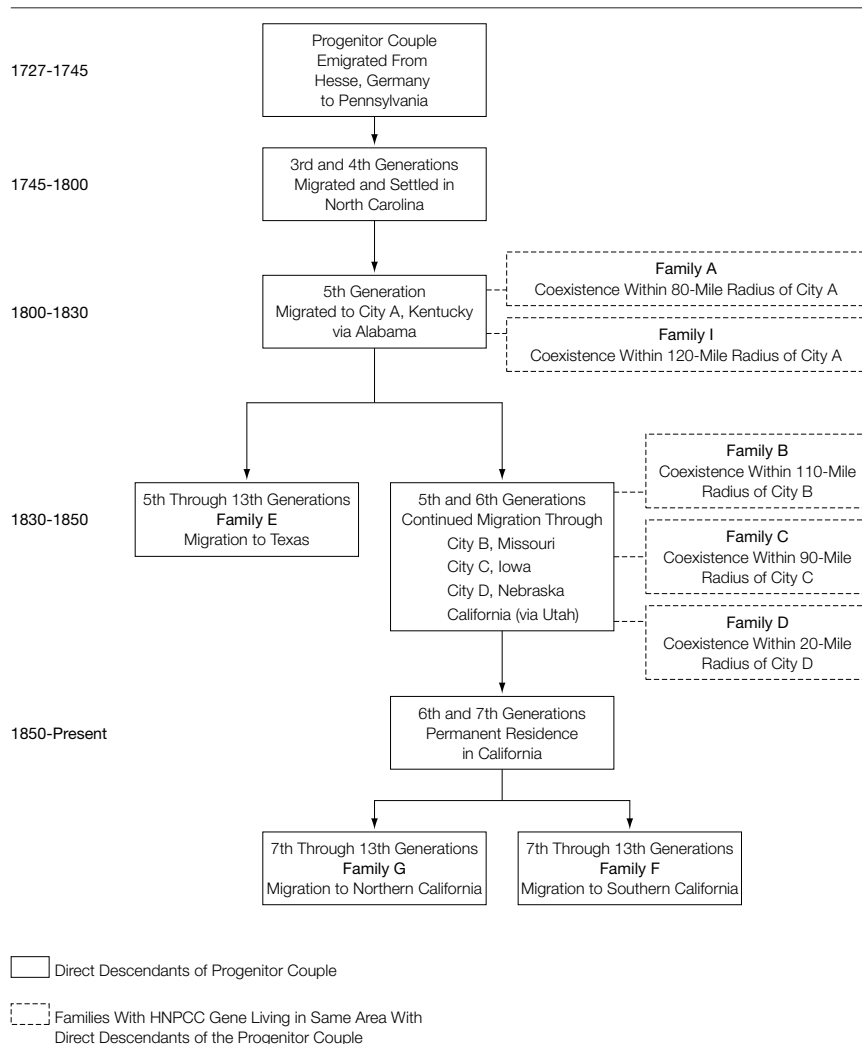
Studies using genealogical, clinical, and molecular genetic technology have enabled us to confirm the common heritage of these 9 families with HNPCC, each of which had been identified independently in diverse geographic areas of the United States (Figure 3). They were then eventually tracked to their progenitors' origin in Germany in the early 18th century (Figures 1 and 2). The presence of an identical *MSH2* del exon 1 to 6 mutation in each family and a shared haplotype provided substantial evidence in support of the founder nature of this phenomenon. Unlike previous reports of founder mutations in hereditary cancer syndromes, this study involved families in a genetically heterogeneous population, spread over a wide geographic area.

Time of Origin and Spread of Founder Mutations

Two *MLH1* founder mutations causing HNPCC in Finland were found to have arisen or been introduced approximately 1000 years ago and approximately 250 years ago, respectively.³¹ Calculations of the "age" of a mutation depend on extensive haplotype analyses and are not very precise.¹³ In the case of the American founder mutation we describe here, all the evidence suggests that the founding (ie, the bottleneck of 1 immigrant introducing it on the American continent) took place 12 or 13 generations ago, in 1727.

For the sake of clarity it might be emphasized that one cannot determine exactly when the mutation arose. It could not have occurred later than generation II, as at least 2 members of generation III were obligate mutation carriers (Figure 1). Conversely, it could have existed in the German population for un-

Figure 3. Timeline of the Migration Pattern of an HNPCC Gene-Carrying Family



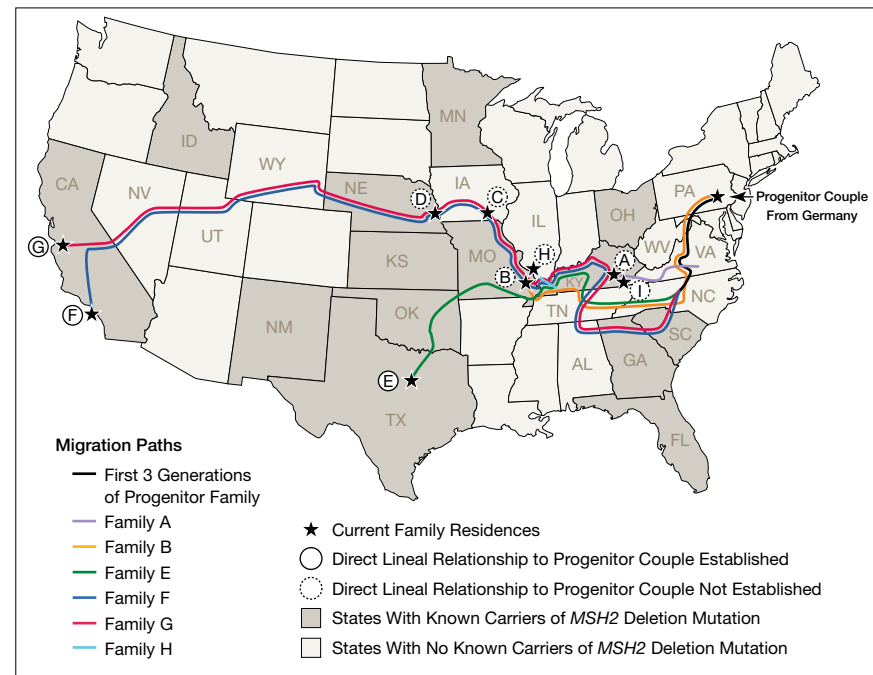
This algorithm outlines the relative time frame that the HNPCC families coexisted (ie, resided in some of the same areas) with the descendants of the progenitor couple. The time frame of coexistence of family H, which migrated through Kentucky to its current residence in Illinois, is not known. Names of cities have been omitted to protect the anonymity of these families. HNPCC indicates hereditary nonpolyposis colorectal cancer.

known numbers of generations before the American founding event. We screened 407 families with HNPCC by Southern hybridization of the *MSH2* and *MLH1* genes and found 37 with a deletion or other genomic rearrangement. Among these, there were many deletions of *MSH2*, including deletions encompassing exons 1 to 6. More importantly, however, by polymerase chain reaction analysis, none of these were the same as the American founder mutation. The series of families described in the "Methods" section is by far the largest series of HNPCC cases hitherto studied systematically for genomic rearrangements; therefore, the absence of the American founder mutation in Europe cannot be excluded, it is certainly unlikely to be common.

Diagnostic Significance and Prevalence of Founder Mutations

In the case of Finland, the 2 founder mutations described above (ie, 3.5-kb *MLH1* del exon 16; splice-site mutation of *MLH1* at exon 6) are so prevalent in specific regions of Finland (50% and 20%, respectively, of all cases of HNPCC) that their detection has been used as a first step in primary screening for HNPCC.^{32,33} We argue here that the American founder deletion of *MSH2* may turn out to account for a significant proportion of all cases of HNPCC in the white US population. This hypothesis is based on 2 facts. First, we have already diagnosed 61 individuals from 9 ostensibly unrelated families by studying families with clinically diagnosed HNPCC at just 2 Midwestern oncology services. These families all reside in proximity of the historically proven westward movement of the progenitors' descendants. In addition to these families, additional codescendants of the progenitors presumably reside in locales along this path (eg, Pennsylvania, North Carolina, Alabama) that remain to be explored in this regard. Second, importantly, the earliest generations of the pedigree (Figure 1) show that there were scores of individuals at

Figure 4. Map of the United States Depicting the Migration Pattern of the Founder HNPCC Family



The lines represent the migration paths of the HNPCC families and their relationship with the progenitor couple. Migration paths of families C, D, and I are currently unknown; the paths of families A and H are only partially known. HNPCC indicates hereditary nonpolyposis colorectal cancer.

risk whose descendants are not known to us. The a priori risk of having the mutation is 50% in all siblings and children of a mutation carrier, so evidence supports the notion that the affected families we have encountered represent but a fraction of all that exist. The specific mutation observed here, being a large deletion, would not be detected in a routine HNPCC mutation analysis as currently performed in most laboratories.

In our studies of HNPCC to date, this *MSH2* mutation was the most frequently observed specific alteration.³⁴ An assay for this specific mutation should be added to routine *MSH2* testing in the United States. Previously tested families with HNPCC for which no mutation was found should be retested for this specific mutation. Should they test positive for the *MSH2* del exon 1 to 6 mutation, affected patients may then benefit from highly targeted screening and management programs for HNPCC-associated cancers.^{3,35}

Our documentation of a founder phenomenon in 9 independently ascertained American families with HNPCC who trace their origin to Germany, and who heretofore were not known to have been related to each other, has important heuristic interest. Their public health impact from the cancer prevention standpoint harbors potential implications for cancer control.

In addition to the cancer control implications, knowing the molecular breakpoints for the founder mutation may also reduce the economic barriers to consumers and third-party payers. Reyes et al,³⁶ in their discussion of selection strategies for genetic testing of patients with HNPCC, already point out that molecular testing for HNPCC is becoming a standard of care, and is cost-effective when compared with the absence of such genetic testing. Thus, if the detection of this founder mutation is used in the primary screening for HNPCC, the cost-effectiveness of DNA screening may increase even more.

In conclusion, the current strategy for DNA screening for HNPCC-associated mutations has been based on the observation that there are no common mutations except in rare, relatively small and homogeneous populations with important founder mutations. Our report highlights the fact that common mutations may exist in large and diverse populations. It reinforces the continuing need for genetic centers to share information on mutation frequencies via databases and publications, and for clinical testing centers to translate new findings into improved DNA testing protocols.

Author Contributions: Dr H. T. Lynch, as principal investigator of this study, had full access to all of the data in the study and takes responsibility for the integrity of the data and the accuracy of the data analyses.

Study concept and design: H. T. Lynch, Okimoto, Wagner, Fodde.

Acquisition of data: Coronel, Okimoto, Hampel, Sweet, J. F. Lynch, Barrows, Wijnen, van der Klift, Franken, Wagner, Fodde, de la Chapelle.

Analysis and interpretation of data: H. T. Lynch, Coronel, Okimoto, Hampel, Sweet, Wijnen, Wagner, Fodde, de la Chapelle.

Drafting of the manuscript: H. T. Lynch, Coronel, Barrows.

Critical revision of the manuscript for important intellectual content: H. T. Lynch, Coronel, Okimoto, Hampel, Sweet, J. F. Lynch, Wijnen, van der Klift, Franken, Wagner, Fodde, de la Chapelle.

Statistical expertise: Coronel, Wagner, Fodde.

Obtained funding: H. T. Lynch, Coronel, Wagner, Fodde.

Administrative, technical, or material support: H. T. Lynch, Coronel, Okimoto, Hampel, Sweet, J. F. Lynch, Barrows, Wijnen, van der Klift, Franken, Wagner, Fodde, de la Chapelle.

Study Supervision: H. T. Lynch, Coronel, Wagner, Fodde, de la Chapelle.

Funding/Support: The study and this article were supported by revenue from Nebraska cigarette taxes awarded to Creighton University by the Nebraska Department of Health and Human Services. Support was

also received from National Institutes of Health (NIH) grant 1U01 CA86389. Research at the Ohio State University was supported by NIH grants CA67941 and CA16058.

Role of the Sponsor: Neither the Nebraska Department of Health and Human Services nor the National Institutes of Health had any role in the design and conduct of the study; in the collection, analysis, and interpretation of the data; in the preparation of the data; or in the preparation, review, or approval of the manuscript.

Disclaimer: The contents of this article are solely the responsibility of the authors and do not necessarily represent the official views of the State of Nebraska or the Nebraska Department of Health and Human Services.

Acknowledgment: We thank Trudy Shaw, MA, for providing excellent technical assistance throughout the preparation of this article. We thank Jill Griesbach, BA, for extensive genealogy work with Families H and I and Ilene Comeras, RN, OCN, for holding a family information service with, and coordinating blood draws from, members of Family I. We also thank the investigators who collected the data for the European and Australian HNPCC studies: Hans Vasen, MD (the Netherlands); Gabriela Moslein, MD (Germany); Majja Kohonen-Corish, PhD (Australia); and Pål Møller, PhD (Norway).

REFERENCES

- International Agency for Research on Cancer. Globocan 2000: cancer incidence, prevalence, and mortality worldwide. Available at: <http://www-dep.iarc.fr/globocan/globocan.html>. Accessed March 26, 2003.
- Vogelstein B, Kinzler KW, eds. *The Genetic Basis of Human Cancer*. New York, NY: McGraw-Hill; 1998.
- Lynch HT, de la Chapelle A. Genetic susceptibility to non-polyposis colorectal cancer. *J Med Genet*. 1999; 36:801-818.
- Lynch HT, de la Chapelle A. Genomic medicine: hereditary colorectal cancer. *N Engl J Med*. 2003;348: 919-932.
- Aaltonen LA, Peltomäki P, Leach FS, et al. Clues to the pathogenesis of familial colorectal cancer. *Science*. 1993;260:812-816.
- Aaltonen LA, Peltomäki P, Mecklin JP, et al. Replication errors in benign and malignant tumors from hereditary nonpolyposis colorectal cancer patients. *Cancer Res*. 1994;54:1645-1648.
- Risinger JI, Berchuck A, Kohler MF, Watson P, Lynch HT, Boyd J. Genetic instability of microsatellites in endometrial carcinoma. *Cancer Res*. 1993;53:5100-5103.
- Wijnen J, van der Klift H, Vasen H, et al. *MSH2* genomic deletions are a frequent cause of HNPCC. *Nat Genet*. 1998;20:326-328.
- Schouten JP, McElgunn CJ, Waaijer R, Zwijnenburg D, Diepvens F, Pals G. Relative quantification of 40 nucleic acid sequences by multiplex ligation-dependent probe amplification. *Nucleic Acids Res*. 2002;30:e57.
- Yan H, Papadopoulos N, Marra G, et al. Conversion of diploidy to haploidy: individuals susceptible to multigene disorders may now be spotted more easily. *Nature*. 2000;403:723-724.
- Nakagawa H, Yan H, Lockman J, et al. Allele separation facilitates interpretation of potential splicing alterations and genomic rearrangements. *Cancer Res*. 2002;62:4579-4582.
- Wijnen J, de Leeuw W, Vasen H, et al. Familial endometrial cancer in female carriers of *MSH6* germline mutations. *Nat Genet*. 1999;23:142-144.
- de la Chapelle A, Wright FA. Linkage disequilibrium mapping in isolated populations: the example of Finland revisited. *Proc Natl Acad Sci U S A*. 1998;95: 12416-12423.
- Thorlacius S, Struwing JP, Hartge P, et al. Population-based study of risk of breast cancer in carriers of *BRCA2* mutation. *Lancet*. 1998;352:1337-1339.
- Goodman RM, Motulsky AG, eds. *Genetic Diseases Among Ashkenazi Jews*. New York, NY: Raven Press; 1979.
- McKusick VA, Hostetler JA, Egeland JA. Genetic studies of the Amish: background and potentialities. *Bull Johns Hopkins Hosp*. 1964;115:203-222.
- Struwing JP, Abeliovich D, Peretz T, et al. The carrier frequency of the *BRCA1* 185delAG mutation is approximately 1 percent in Ashkenazi Jewish individuals. *Nat Genet*. 1995;11:198-200.
- Struwing JP, Hartge P, Wacholder S, et al. The risk of cancer associated with specific mutations of *BRCA1* and *BRCA2* among Ashkenazi Jews. *N Engl J Med*. 1997;336:1401-1408.
- Nystrom-Lahti M, Kristo P, Nicolaides NC, et al. Founding mutations and Alu-mediated recombination in hereditary colon cancer. *Nat Med*. 1995;1: 1203-1206.
- Peltomäki P, Aaltonen L, Sistonen P, et al. Genetic mapping of a locus predisposing to human colorectal cancer. *Science*. 1993;260:810-812.
- Froggatt NJ, Green J, Brassett C, et al. A common *MSH2* mutation in English and North American HNPCC families: origin, phenotypic expression, and sex specific differences in colorectal cancer. *J Med Genet*. 1999;36:97-102.
- Froggatt NJ, Joyce JA, Davies R, et al. A frequent *hMSH2* mutation in hereditary non-polyposis colon cancer syndrome. *Lancet*. 1995;345:727.
- Desai DC, Lockman JC, Chadwick RB, et al. Recurrent germline mutation in *MSH2* arises frequently de novo. *J Med Genet*. 2000;37:646-652.
- Hutter P, Courturier A, Scott RJ, et al. Complex genetic predisposition to cancer in an extended HNPCC family with an ancestral *hMLH1* mutation. *J Med Genet*. 1996;33:636-640.
- Foulkes WD, Thiffault I, Gruber SB, et al. The founder mutation *MSH2**1906G→C is an important cause of hereditary nonpolyposis colorectal cancer in the Ashkenazi Jewish population. *Am J Hum Genet*. 2002;71:1395-1412.
- Wagner A, Barrows A, Wijnen JT, et al. Molecular analysis of hereditary nonpolyposis colorectal cancer in the United States: high mutation detection rate among clinically selected families and characterization of an American founder genomic deletion of the *MSH2* gene. *Am J Hum Genet*. 2003;72:1088-1100.
- Nakagawa H, Hampel H, de la Chapelle A. Identification and characterization of genomic rearrangements of *MSH2* and *MLH1* in Lynch syndrome (HNPCC) by novel techniques. *Hum Mutat*. 2003;22:258.
- Burn J, Chapman PD, Bishop DT, Mathers J. Diet and cancer prevention: the Concerted Action Polyp Prevention (CAPP) studies. *Proc Nutr Soc*. 1998;57: 183-186.
- Wijnen J, Khan PM, Vasen H, et al. Majority of *hMLH1* mutations responsible for hereditary nonpolyposis colorectal cancer cluster at the exonic region 15-16. *Am J Hum Genet*. 1996;58:300-307.
- Wijnen J, Khan PM, Vasen H, et al. Hereditary nonpolyposis colorectal cancer families not complying with the Amsterdam criteria show extremely low frequency of mismatch-repair-gene mutations. *Am J Hum Genet*. 1997;61:329-335.
- Moisio A-L, Sistonen P, Weissenbach J, de la Chapelle A, Peltomäki P. Age and origin of two common *MLH1* mutations predisposing to hereditary colon cancer. *Am J Hum Genet*. 1996;59:1243-1251.
- Aaltonen LA, Salovaara R, Kristo P, et al. Incidence of hereditary nonpolyposis colorectal cancer and the feasibility of molecular screening for the disease. *N Engl J Med*. 1998;338:1481-1487.
- Salovaara R, Loukola A, Kristo P, et al. Population-based molecular detection of hereditary nonpolyposis colorectal cancer. *J Clin Oncol*. 2000;18:2193-2200.
- Wagner A, van der Klift H, Franken P, et al. A 10-Mb paracentric inversion of chromosome arm 2p inactivates *MSH2* and is responsible for HNPCC in a North-American kindred. *Genes Chromosomes Cancer*. 2002;35:49-57.
- Järvinen HJ, Aarnio M, Mustonen H, et al. Controlled 15-year trial on screening for colorectal cancer in families with hereditary nonpolyposis colorectal cancer. *Gastroenterology*. 2000;118:829-834.
- Reyes CM, Allen BA, Terdiman JP, Wilson LS. Comparison of selection strategies for genetic testing of patients with hereditary nonpolyposis colorectal carcinoma: effectiveness and cost-effectiveness. *Cancer*. 2002;95:1848-1856.