



Universiteit
Leiden
The Netherlands

The architectural representation of Islam : muslim-commissioned mosque design in the Netherlands

Roose, E.R.

Citation

Roose, E. R. (2009, May 6). *The architectural representation of Islam : muslim-commissioned mosque design in the Netherlands*. Retrieved from <https://hdl.handle.net/1887/13771>

Version: Not Applicable (or Unknown)

License: [Licence agreement concerning inclusion of doctoral thesis in the Institutional Repository of the University of Leiden](#)

Downloaded from: <https://hdl.handle.net/1887/13771>

Note: To cite this publication please use the final published version (if applicable).



Universiteit Leiden

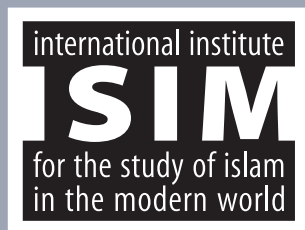
THE ARCHITECTURAL REPRESENTATION OF ISLAM

This book is a study of Dutch mosque designs, objects of heated public debate. Until now, studies of diaspora mosque designs have largely consisted of normative architectural *critiques* that reject the ubiquitous 'domes and minarets' as hampering further Islamic-architectural evolution. *The Architectural Representation of Islam: Muslim-Commissioned Mosque Design in The Netherlands* represents a clear break with the architectural critical narrative, and meticulously analyzes twelve design processes for Dutch mosques. It shows that patrons, by consciously selecting, steering and replacing their architects, have much more influence on their mosques than has been generally assumed. Through the careful transformation of specific building elements from Islamic architectural history to a new context, they literally aim to 'construct' the ultimate Islam. Their designs thus evolve not in opposition to Dutch society, but to those versions of Islam that they hold to be false.

ERIC ROOSE

Eric Roose (1967) graduated with M.A. degrees in Public International Law, Cultural Anthropology, and Architectural History (the latter cum laude) from Leiden University. Between 2004 and 2008 he conducted PhD research at Leiden University, and between 2005 and 2008 was also an Affiliated PhD Fellow at the International Institute for the Study of Islam in the Modern World (ISIM) in Leiden. He is currently a Postdoctoral Fellow at the Amsterdam School for Social Science Research (ASSR) of the University of Amsterdam.

ISBN 978 90 8964 133 5



WWW.AUP.NL

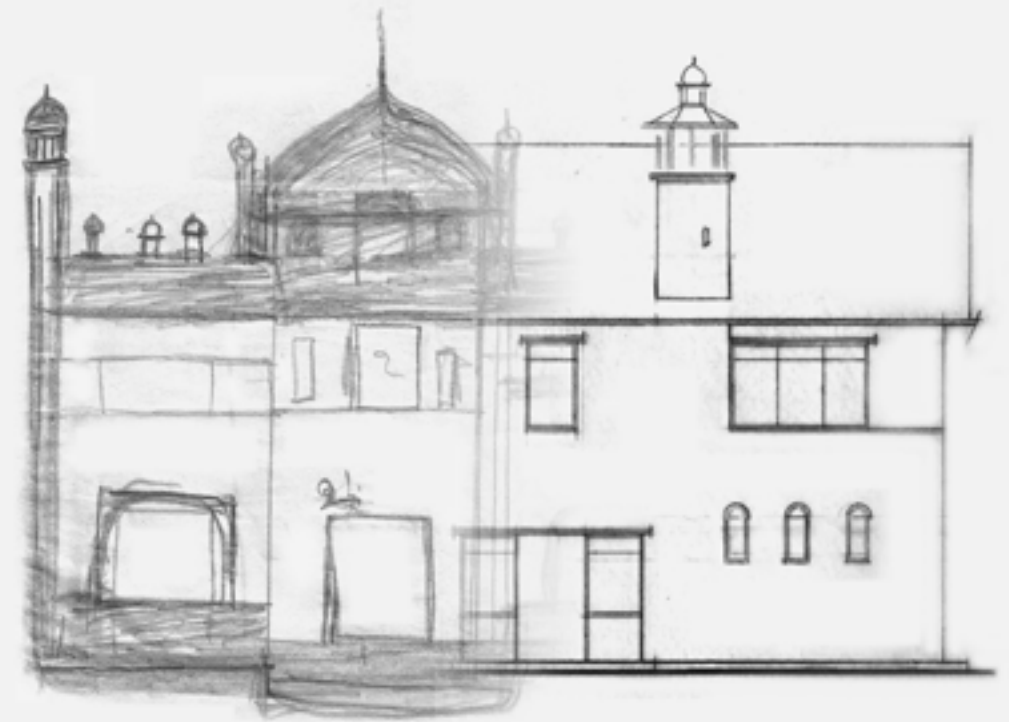


THE ARCHITECTURAL REPRESENTATION OF ISLAM

ERIC ROOSE

ISIM

ISIM DISSERTATIONS



THE ARCHITECTURAL REPRESENTATION OF ISLAM

MUSLIM-COMMISSIONED
MOSQUE DESIGN
IN THE NETHERLANDS

Eric Roose

AMSTERDAM UNIVERSITY PRESS