



Universiteit  
Leiden  
The Netherlands

## Changes in total cerebral blood flow and morphology in aging

Spilt, A.

### Citation

Spilt, A. (2006, March 9). *Changes in total cerebral blood flow and morphology in aging*. Retrieved from <https://hdl.handle.net/1887/4342>

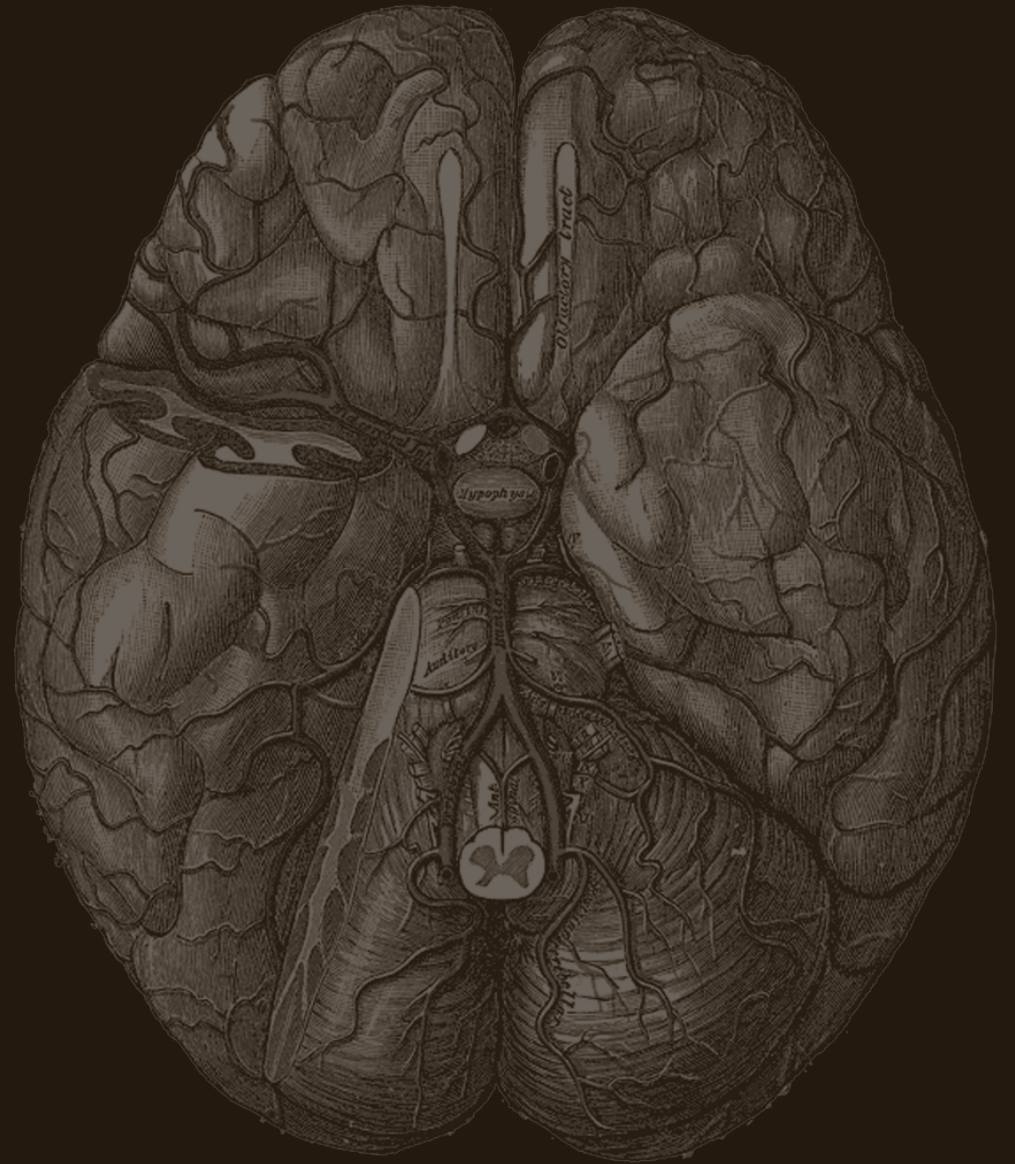
Version: Corrected Publisher's Version

License: [Licence agreement concerning inclusion of doctoral thesis in the Institutional Repository of the University of Leiden](#)

Downloaded from: <https://hdl.handle.net/1887/4342>

**Note:** To cite this publication please use the final published version (if applicable).

# Changes in Total Cerebral Blood Flow and Morphology in Aging



A. Spilt

Changes in Total Cerebral and Morphology in Aging

A. Spilt

