

Cover Page



Universiteit Leiden



The handle <http://hdl.handle.net/1887/19945> holds various files of this Leiden University dissertation.

Author: Litamahuputty, Betty

Title: Ternate Malay : grammar and texts

Date: 2012-10-11

Betty Litamahuputty

Ternate Malay Grammar and Texts

This book is the first grammar on Ternate Malay, a local variety of Malay spoken on the island of Ternate, North-Moluccas, Indonesia. It is a language with words flexible in function and meaning, which do not bear overtly expressed features to indicate grammatical functions. Linguistic tools traditionally used to distinguish between word classes do not work satisfactorily for this language.

Certain lexical items and their position in a string of words serve as indicators of relationships between the words and determine the meaning they express. The preference for particular types of constructions and other combinatory abilities serve to limit the number of plausible interpretations and facilitate the determining of meaningful word constructions. The linguistic context and the non-linguistic situation determine the most appropriate interpretation of structures and the meaning they express.

Various kinds of constructions are analyzed, described, and illustrated with examples from stories, told by a young Ternate Malay speaker. The word order, different types of possessive constructions, spatial orientation, and other linguistic topics of interest are described and discussed. The grammar aims to complement linguistic descriptions of Malay varieties in general, and particularly those in eastern Indonesia. The Ternate Malay texts and examples display spontaneous and naturally spoken Malay used as the daily language of communication in Ternate. The accompanying CD-rom contains texts with sound files and a Ternate Malay-English wordlist.



Netherlands
Graduate
School of
Linguistics

ISBN 978-94-6093-088-1

LOT
306

Betty Litamahuputty

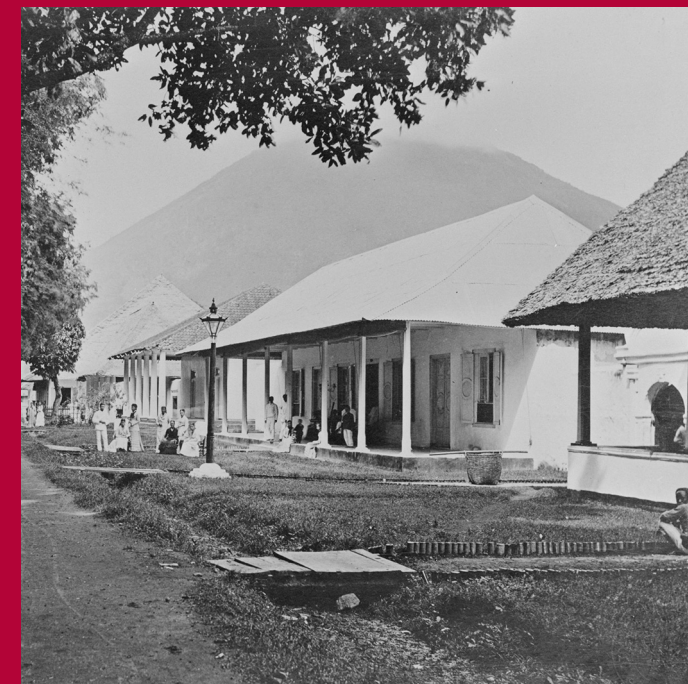
Ternate Malay: Grammar and Texts



Linguistics in Leiden

Betty Litamahuputty

Ternate Malay Grammar and Texts



Linguistics in Leiden



Netherlands
Graduate
School of
Linguistics

Landelijke Onderzoekschool Taalwetenschap