



Universiteit  
Leiden

The Netherlands

## Maternal recognition of the (semi) allogeneic fetus during implantation and pregnancy

Lashley, Eileen Elisabeth Lynn O'Neill

### Citation

Lashley, E. E. L. O. 'N. (2015, April 21). *Maternal recognition of the (semi) allogeneic fetus during implantation and pregnancy*. Retrieved from <https://hdl.handle.net/1887/32779>

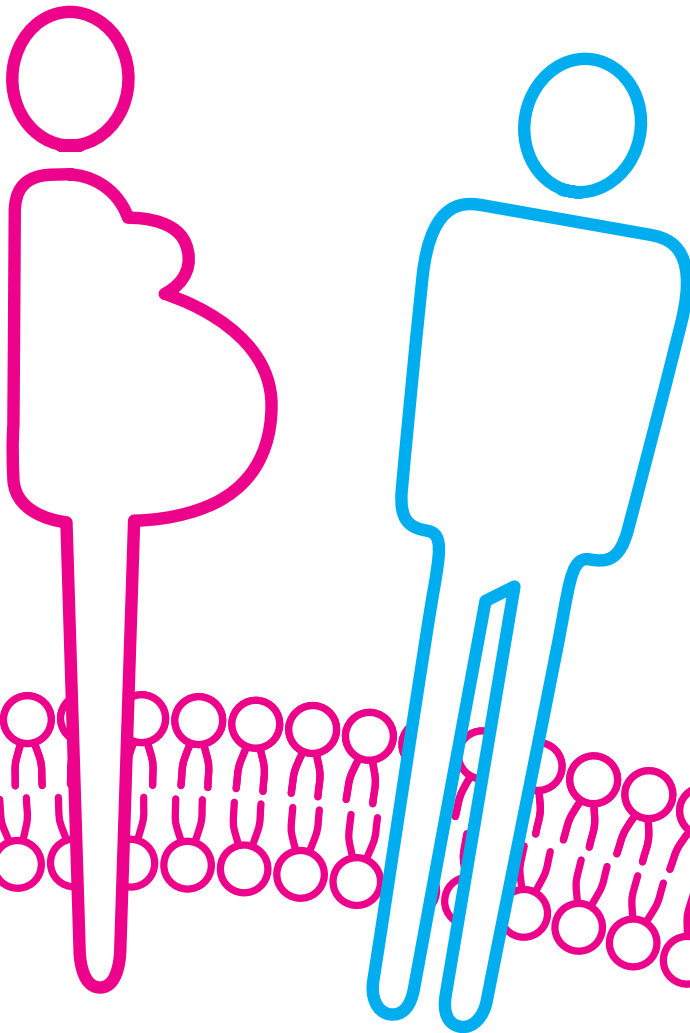
Version: Corrected Publisher's Version

License: [Licence agreement concerning inclusion of doctoral thesis in the Institutional Repository of the University of Leiden](#)

Downloaded from: <https://hdl.handle.net/1887/32779>

**Note:** To cite this publication please use the final published version (if applicable).

# Maternal recognition of the (semi) allogeneic fetus during implantation and pregnancy



Lisa Lashley

