



Universiteit  
Leiden  
The Netherlands

## Electronic and spatial characteristics of the retinylidene chromophore in rhodopsin

Verhoeven, M.A.

### Citation

Verhoeven, M. A. (2005, November 15). *Electronic and spatial characteristics of the retinylidene chromophore in rhodopsin*. Leiden Institute of Chemistry, Biophysical Organic Chemistry/Solid-state NMR, Faculty of Science, Leiden University. Retrieved from <https://hdl.handle.net/1887/12041>

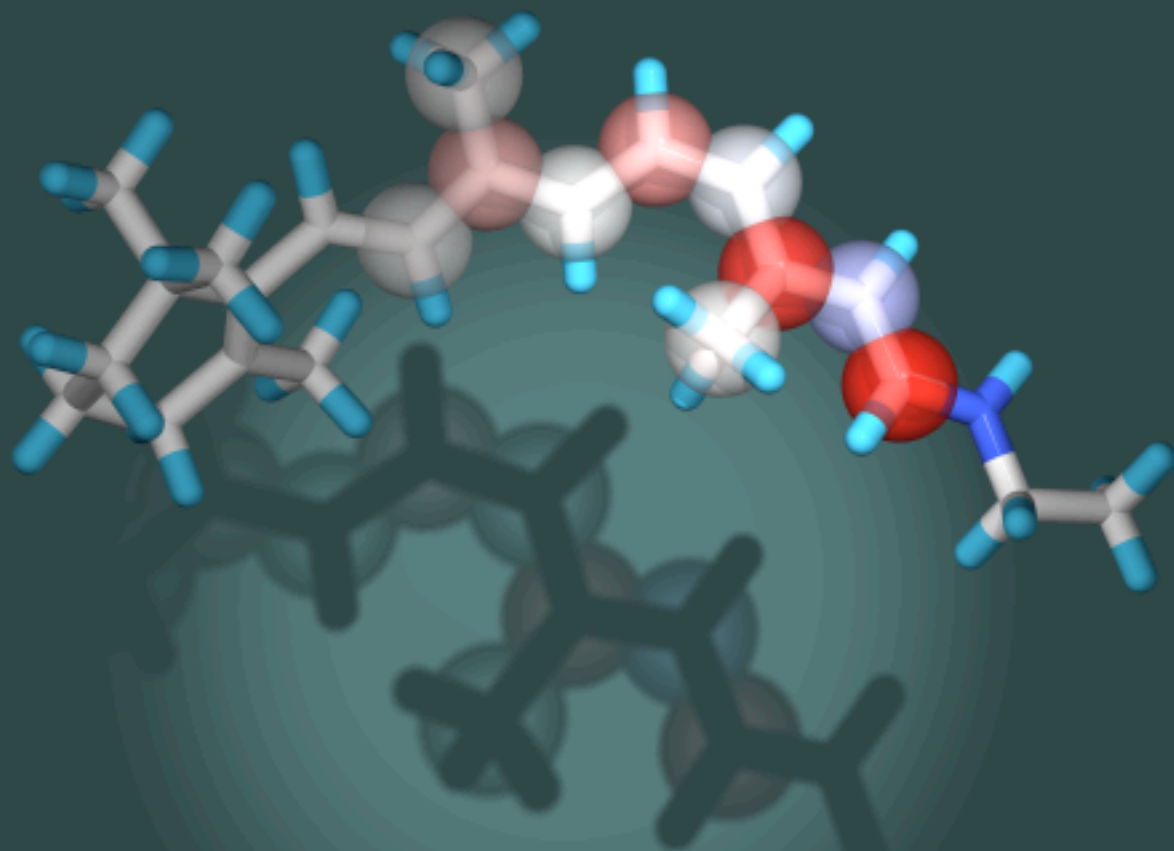
Version: Corrected Publisher's Version

License: [Licence agreement concerning inclusion of doctoral thesis in the Institutional Repository of the University of Leiden](#)

Downloaded from: <https://hdl.handle.net/1887/12041>

**Note:** To cite this publication please use the final published version (if applicable).

# Electronic and Spatial Characteristics of the Retinylidene Chromophore of Rhodopsin



M. A. Verhoeven