



Universiteit
Leiden
The Netherlands

Clinical applications of non-invasive imaging techniques in suspected coronary artery disease and in acute myocardial infarction

Nucifora, G.

Citation

Nucifora, G. (2015, April 2). *Clinical applications of non-invasive imaging techniques in suspected coronary artery disease and in acute myocardial infarction*. Retrieved from <https://hdl.handle.net/1887/32654>

Version: Corrected Publisher's Version

License: [Licence agreement concerning inclusion of doctoral thesis in the Institutional Repository of the University of Leiden](#)

Downloaded from: <https://hdl.handle.net/1887/32654>

Note: To cite this publication please use the final published version (if applicable).

Cover Page



Universiteit Leiden



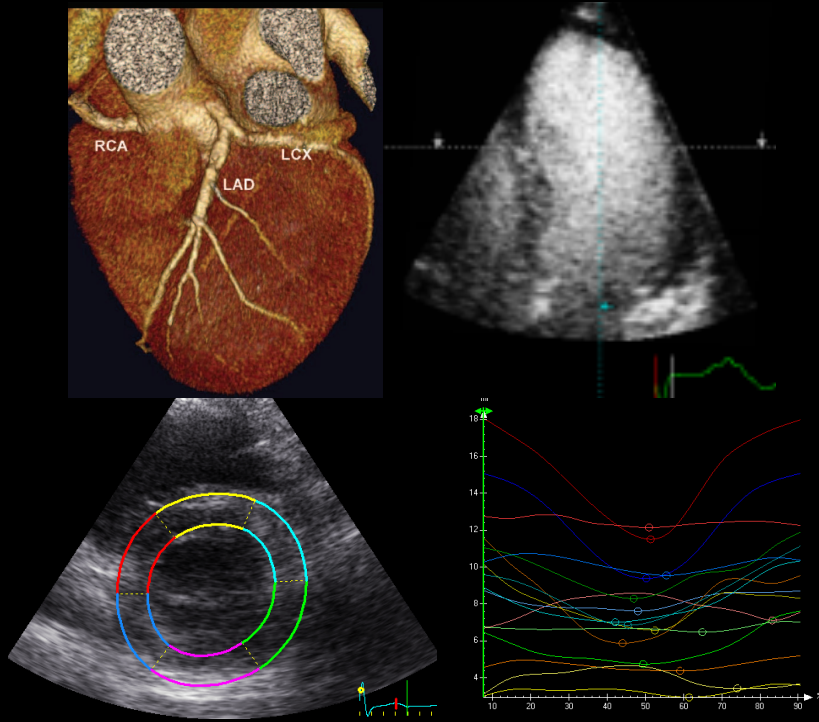
The handle <http://hdl.handle.net/1887/32654> holds various files of this Leiden University dissertation.

Author: Nucifora, Gaetano

Title: Clinical applications of non-invasive imaging techniques in suspected coronary artery disease and in acute myocardial infarction

Issue Date: 2015-04-02

CLINICAL APPLICATIONS OF NON-INVASIVE IMAGING TECHNIQUES IN SUSPECTED CORONARY ARTERY DISEASE AND IN ACUTE MYOCARDIAL INFARCTION



GAETANO NUCIFORA