



Universiteit  
Leiden

The Netherlands

## **Radio emission from merging galaxy clusters : characterizing shocks, magnetic fields and particle acceleration**

Weeren, R.J. van

### **Citation**

Weeren, R. J. van. (2011, December 20). *Radio emission from merging galaxy clusters : characterizing shocks, magnetic fields and particle acceleration*.

Retrieved from <https://hdl.handle.net/1887/18259>

Version: Corrected Publisher's Version

License: [Licence agreement concerning inclusion of doctoral thesis in the Institutional Repository of the University of Leiden](#)

Downloaded from: <https://hdl.handle.net/1887/18259>

**Note:** To cite this publication please use the final published version (if applicable).

---

## The “toothbrush-relic”: evidence for a coherent linear 2-Mpc scale shock wave in a massive merging galaxy cluster?

---

**Abstract.** Some merging galaxy clusters host diffuse extended radio emission, so-called radio halos and relics, which origin is still being debated. Here we present WSRT and GMRT observations of a new radio-selected galaxy cluster 1RXS J0603.3+4214 at  $z = 0.225$ . The cluster is detected in the ROSAT All Sky Survey with an X-ray luminosity of  $L_{X, 0.1-2.4 \text{ keV}} \sim 1 \times 10^{45} \text{ erg s}^{-1}$ . The cluster hosts a large bright 1.9 Mpc radio relic, an elongated  $\sim 2$  Mpc radio halo, and two fainter smaller radio relics. The large radio relic has a peculiar linear morphology. For this relic we observe a clear spectral index gradient from the front of the relic towards the back. Parts of this relic are highly polarized with a polarization fraction of up to 60%. We performed Rotation Measure (RM) Synthesis between 1.2 and 1.7 GHz. The results suggest that for the west part of the large relic some of the Faraday rotation is caused by ICM and not only due to galactic foregrounds. We also carried out a detailed spectral analysis of this radio relic and created radio color-color diagrams. We find (i) an injection spectral index of  $-0.6$  to  $-0.7$ , (ii) steepening spectral index and increasing spectral curvature in the post-shock region, and (iii) an overall power-law spectrum between 74 MHz and 4.9 GHz with  $\alpha = -1.10 \pm 0.02$ . Mixing of emission in the beam from regions with different ages is probably the dominant factor that determines the shape of the radio spectra. Changes in the magnetic field, total electron content, or adiabatic gains/losses do not play a major role. A model in which particles are (re)accelerated in a first order Fermi process at the front of the relic provides the best match to the observed spectra. We speculate that in the post-shock region particles are re-accelerated by merger induced turbulence to form the radio halo as the relic and halo are connected. The orientation of the bright relic and halo indicate a north-south merger event, but the peculiar linear shape and the presence of another relic, perpendicular to the bright relic, suggest a more complex merger event. Deep X-ray observations will be needed to determine the merger scenario.

R. J. van Weeren, H. J. A. Röttgering, H. T. Intema, L. Rudnick,  
M. Brügger, M. Hoeft, J. B. R. Oonk  
*to be submitted*

## 9.1 Introduction

Radio halos and relics are diffuse sources found in galaxy clusters that show signs of an ongoing merger event (see Feretti 2005; Ferrari et al. 2008; Brüggén et al. 2011, for an overview). These sources reveal the presence of relativistic particles and cluster-wide magnetic fields (e.g., Jaffe 1977) within the intracluster medium (ICM). In the hierarchical model of structure formation galaxy clusters form through a sequence of mergers with smaller substructures. These merger events create shocks and turbulence in the ICM and could amplify magnetic fields. Several models have been put forward which link the presence of these diffuse radio sources to cluster merger events (e.g., Ensslin et al. 1998; Brunetti et al. 2001; Petrosian 2001; Cassano & Brunetti 2005; Keshet 2010; Enßlin et al. 2011).

*Radio halos* are smooth extended radio sources that roughly follow the X-ray emission from the ICM. They are typically unpolarized and have an extent of about a Mpc. Radio halos have been explained by the turbulence re-acceleration model (e.g., Brunetti et al. 2001; Petrosian 2001; Cassano & Brunetti 2005; Brunetti et al. 2008; Cassano 2010). In an alternative model, the energetic electrons are secondary products of proton-proton collisions (e.g., Dennison 1980; Blasi & Colafrancesco 1999; Dolag & Enßlin 2000). Simulations from Donnert et al. (2010a,b), observed radial radio profiles (e.g., Brown & Rudnick 2011), upper limits on the Gamma ray emission (Jeltema & Profumo 2011), and the existence of ultra-steep spectrum radio halos (Brunetti et al. 2008) put tension on the secondary models. Clusters with and without radio halos also show a bimodal distribution in the  $P_{1.4\text{ GHz}} - L_X$  diagram, i.e., a fraction of clusters hosts giant radio halos, while the majority of clusters do not show evidence of radio emission (Brunetti et al. 2007), in agreement with the turbulent re-acceleration model (Brunetti et al. 2009). However, it has been claimed that cosmic ray transport in clusters can also induce the radio bimodality that is observed (Enßlin et al. 2011).

*Radio relics* are usually divided up into three different classes (see Kempner et al. 2004, for an overview). (1) *Radio Gischt* are large extended sources mostly found in the outskirts of galaxy clusters. They are proposed to trace shock waves (Ensslin et al. 1998; Miniati et al. 2001), in which particles are accelerated by the diffusive shock acceleration mechanism (DSA; e.g., Krymskii 1977; Axford et al. 1977; Bell 1978a,b; Blandford & Ostriker 1978; Drury 1983; Blandford & Eichler 1987; Jones & Ellison 1991; Malkov & O’C Drury 2001) in a first-order Fermi process. However, the efficiency with which collisionless shocks can accelerate particles is unknown and may not be enough to produce the observed radio brightness of relics. A closely linked scenario is that of shock re-acceleration of pre-accelerated electrons in the ICM, which is a more efficient mechanism for weak shocks (e.g., Markevitch et al. 2005; Giacintucci et al. 2008; Kang & Ryu 2011). (2) *AGN relics* trace old radio plasma from previous episodes of AGN activity. (3) *Radio phoenixes* are AGN relics that have been compressed adiabatically by merger shock waves boosting the radio emission (Enßlin & Gopal-Krishna 2001; Enßlin & Brüggén 2002). The radio spectra of these sources should be steep ( $\alpha \lesssim -1.5$ ,  $F_\nu \propto \nu^\alpha$ , where  $\alpha$  is the spectral index) and curved due to synchrotron and Inverse Compton (IC) losses.

A different model for radio relics (radio gischt) and halos has been proposed by Keshet (2010). It is based on a secondary cosmic ray electron model, where the time evolution of the magnetic fields and cosmic ray distribution are taken into account to explain both halos and gischt. For the outer edges of relics it is predicted that the spectral index should be  $\alpha \approx -1$ . In addition, the magnetic fields ( $B$ ) are expected to be strong, with  $B \gtrsim B_{\text{CMB}} > 3 \mu\text{Gauss}$ , and  $B_{\text{CMB}}$  the equivalent magnetic field strength of the cosmic microwave background.

Table 9.1: GMRT observations

	147 MHz	241 MHz (dual)	325 MHz	610 MHz (dual), 610 MHz	1280 MHz
Observation date	Apr 29, 2010	Nov 20, 2009	Apr 25, 2010	Nov 20, 2009 & 30 Apr, 2010	Nov 12, 2009
Usable bandwidth	15 MHz	6 MHz	30 MHz	30 MHz	30 MHz
Channel width	31.25 kHz	62.5 kHz	62.5 kHz	62.5 kHz	62.5 kHz
Polarization	RR+LL	LL	RR+LL	RR, RR+LL	RR+LL
Integration time	4 sec	8 sec	8 sec	8 sec	16 sec
Total on-source time	5.5 hr	3.5 hr	6.5 hr	3.5 + 6.0 hr	4.0 hr
Beam size	26'' × 22''	16'' × 12''	12'' × 8.7''	5.1'' × 4.1''	5.8'' × 2.0''
Rms noise ( $\sigma_{\text{rms}}$ )	0.92 mJy beam <sup>-1</sup>	300 $\mu$ Jy beam <sup>-1</sup>	79 $\mu$ Jy beam <sup>-1</sup>	26 $\mu$ Jy beam <sup>-1</sup>	32 $\mu$ Jy beam <sup>-1</sup>
Briggs weighting	0.5	0.5	0.0	0.0	0.5

Table 9.2: WSRT observations

	25 cm, 1221 MHz	21 cm, 1382 MHz	18 cm, 1714 MHz	13 cm, 2272 MHz	6 cm, 4.9 GHz
Bandwidth	$8 \times 20$ MHz	$8 \times 20$ MHz	$8 \times 20$ MHz	$8 \times 20$ MHz	$8 \times 20$ MHz
Number of channels per IF	64	64	64	64	64
Polarization	XX, YY, XY, XY	XX, YY, XY, XY	XX, YY, XY, XY	RR, LL, RL, LR	XX, YY, XY, XY
Observation dates	Aug 28, 2010	Sep 10, 2010	Sep 3, 2010	Sep 9, 2010	Sep 2 & 6, 2010
Total on-source time	12 hr	12 hr	12 hr	12 hr	24hr
Beam size	$29.0'' \times 19.0''$	$27.1'' \times 16.4''$	$23.6'' \times 15.6''$	$16.1'' \times 9.8''$	$7.0'' \times 4.7''$
Rms noise ( $\sigma_{\text{rms}}$ )	$39 \mu\text{Jy beam}^{-1}$	$27 \mu\text{Jy beam}^{-1}$	$25 \mu\text{Jy beam}^{-1}$	$40 \mu\text{Jy beam}^{-1}$	$41 \mu\text{Jy beam}^{-1}$
Briggs weighting	0.0	0.5	1.0	0.5	0.5

Although there is now substantial evidence that radio relics and halos are related to galaxy cluster mergers (e.g., Cassano et al. 2010b), the detailed physics are still not understood. Radio spectra are a crucial way to separate between the physical models for the origin of radio relics and halos. Obtaining high-quality spectra is however difficult as these sources are extended and have a low surface brightness. In particular, spectral curvature provides important information about the underlying physical processes. However, curvature in the synchrotron spectrum is only observable if the observed frequency range is wide enough. In addition, obtaining images at matched resolutions over a wide-frequency range is often not possible.

We carried out an observing campaign to search for new diffuse radio sources in clusters (van Weeren et al. 2011c,b). By inspecting the WENSS (Rengelink et al. 1997) and NVSS (Condon et al. 1998) surveys we came across the complex radio source B3 0559+422B. The radio source roughly coincided with an extended X-ray source in the ROSAT All Sky Survey. In addition, an overdensity of galaxies following the X-ray emission, was visible in 2MASS images. The diffuse radio source, extended X-ray emission and galaxy overdensity strongly suggested the presence of a previously unidentified galaxy cluster located at moderate redshift. In this paper we present detailed radio observations of this new galaxy cluster 1RXS J0603.3+4214 and investigate the spectral and polarimetric properties of the diffuse emission.

The layout of this paper is as follows. In Sect. 9.2 we give an overview of the observations and the data reduction. The WSRT and GMRT images are presented in Sect. 9.3. The radio spectra and polarization data are analyzed in Sects 9.4 to 9.6. We end with a discussion and conclusions in Sects. 9.7 and 9.8.

Throughout this paper we assume a  $\Lambda$ CDM cosmology with  $H_0 = 71 \text{ km s}^{-1} \text{ Mpc}^{-1}$ ,  $\Omega_m = 0.3$ , and  $\Omega_\Lambda = 0.7$ . All images are in the J2000 coordinate system.

## 9.2 Observations & data reduction

### 9.2.1 GMRT observations

GMRT observations were taken using the GMRT software backend (GSB; Roy et al. 2010). An overview of the observations is given in Table 9.1.

The data were reduced with the NRAO Astronomical Image Processing System (AIPS) package. The data were visually inspected for the presence of RFI which was subsequently removed. For the 147 and 241 MHz data, RFI was fitted and subtracted using the technique described by Athreya (2009), implemented in *Obit* (Cotton 2008). Standard bandpass and gain calibration were carried out, followed by several rounds of phase self-calibration and two final rounds of amplitude and phase self-calibration. The fluxes for the calibrator sources were set by the Perley & Taylor (1999) extension to the Baars et al. (1977) scale. Images were made using “briggs” weighting (Briggs 1995), see Table 9.1. were cleaned down to 2 times the rms noise level ( $2\sigma_{\text{rms}}$ ) within the clean boxes and corrected for the primary beam attenuation<sup>1</sup>. For more details about the data reduction see van Weeren et al. (2011e). The 147 MHz data were further calibrated for ionospheric phase distortions, as these can become quite severe at this frequency, with the SPAM package (Intema et al. 2009). At 325 MHz we removed several sources using the “peeling”-method (e.g., Noordam 2004).

<sup>1</sup>[http://gmrt.ncra.tifr.res.in/gmrt\\_hp/Users/doc/manual/UsersManual/node27.html](http://gmrt.ncra.tifr.res.in/gmrt_hp/Users/doc/manual/UsersManual/node27.html)

## 9.2.2 WSRT observations

WSRT observations of 1RXS J0603.3+4214 were taken in the L-band, 13cm and 6cm bands, see Table 9.2 for details. The data were calibrated with the CASA<sup>2</sup> package. We first removed time ranges affected by shadowing and RFI. The data were then calibrated for the bandpass response and subsequent gain solutions were transferred to the target source. Channel dependent leakage terms were found using an unpolarized calibrator source and the polarization angles were determined from 3C286. The fluxes for the calibrator sources were set by the Perley & Taylor (1999) extension to the Baars et al. (1977) scale. The data were exported into AIPS for several rounds of phase self-calibration, followed by two rounds of amplitude and phase self-calibration, see also van Weeren et al. (2011e). Images were cleaned with manually placed clean boxes and corrected for the primary beam attenuation. A deep image was created by combining the images from individual IF’s from the 18, 21, and 25 cm bands. The images were convolved to the same resolution and combined with a spectral index scaling of  $-1$ . The resolution of this combined image is  $29'' \times 19''$ .

We used the WSRT L-band observations to perform RM-Synthesis (see Sect. 9.6.2). For this, we created full polarization maps of every two neighboring frequency channels (i.e., the image bandwidth is 62.5 kHz). We inspected all these images and removed maps that had high noise levels, were affected by RFI or had other artifacts. In the end, 280 channels maps between 1170 and 1786 MHz were retained for RM-synthesis.

## 9.2.3 WHT spectroscopy & imaging

Optical images of 1RXS J0603.3+4214 were taken with the PFIP camera on the 4.2m William Herschel Telescope (WHT) between 15 and 19 April, 2009 with V, R and I filters. The seeing varied between  $1.0''$  and  $1.5''$  and the total integration time was 1500 s per filter. The data were reduced with IRAF (Tody 1986, 1993) and the *mscred* package (Valdes 1998). Images were flat-fielded and corrected for the bias offset. R and I band images were also fringe corrected. The individual exposures were averaged, with pixels being rejected above  $3.0\sigma_{\text{rms}}$  to remove cosmic rays and other artifacts. The optical images were strongly affected by the bright star BD+42 1474 ( $V_{\text{mag}} = 8.62$ ), see Fig. 9.1.

To determine the redshift of the cluster, WHT ISIS spectra of galaxies located on the optical images were taken on 10 and 11 February, 2011. For the blue arm we used the R300B grating and for the red arm the R316R grating. The slit-width was  $1.5''$ . Flat-fielding, bias correction, and wavelength calibration were performed in IDL<sup>3</sup>. The total exposure time per galaxy was 1500 s in both the blue and red arms. In the end, the spectra for the blue and red arm were merged into single spectrum for each galaxy.

## 9.3 Results: redshift, X-rays, and radio continuum maps

### 9.3.1 Redshift of 1RXS J0603.3+4214

The brightest cluster members are visible in the 2MASS survey images (Skrutskie et al. 2006) and some of them are also listed in the 2MASS Extended sources catalog (Skrutskie et al. 2003).

<sup>2</sup><http://casa.nrao.edu/>

<sup>3</sup><http://www.ittvis.com>

Table 9.3: Redshifts

Galaxy	2MASS K mag	$z$
2MASX J06031667+4214416	13.204	0.227
2MASX J06030757+4216215	13.610	0.222
2MASS J06032605+4214050	15.075	0.228
2MASS J06030644+4215241	15.201	0.227
2MASX J06032432+4209306	13.858	0.220

The cluster is not listed in NED or SIMBAD and probably remained unidentified because it is located relatively close to the galactic plane at a galactic latitude  $b = 9.4^\circ$  and nearby the bright star BD+42 1474.

No published redshifts are available for any of the galaxies in the cluster. Galaxies for which WHT ISIS spectra were obtained are listed in Table 9.3 and the spectra are shown in Fig. 9.2. The spectra are typical for passive red elliptical galaxies mostly found in clusters. We find that the five galaxies are located at  $0.220 \leq z \leq 0.228$ . Taking the average value we adopt  $z = 0.225 \pm 0.04$  for the cluster, with the uncertainty in the redshift given by the standard deviation.

### 9.3.2 X-ray emission from the ICM

1RXS J0603.1+4214 is seen the ROSAT All-Sky Survey as an extended source and listed as 1RXS J060313.4+421231, 1RXS J060322.3+421305, and 1RXS J060314.8+421439 (Voges et al. 1999, 2000), see Fig. 9.3 (left panel). Using the redshift and ROSAT count rate (0.21 PSPC cts  $s^{-1}$ ) we find an X-ray luminosity ( $L_{X, 0.1-2.4 \text{ keV}}$ ) of  $\sim 1 \times 10^{45}$  erg  $s^{-1}$ . The X-ray emission is extended in the north-south direction. Additional emission extends to the east and west of the main X-ray peak. The high X-ray luminosity and extended emission are consistent with a massive cluster undergoing a major merger event.

### 9.3.3 Radio continuum maps

The WSRT L-band map is displayed in Fig. 9.3. We labeled some of the most prominent sources in this image. The GMRT 147, 241, 325, 610, 1280 MHz, and 13 cm WSRT images are shown in Figs. 9.4 to 9.7 (for the 4.9 GHz image see Fig. 9.16). The properties of the diffuse source in the cluster are summarized in Table 9.4.

Source A (B3 0559+422A) is a compact flat spectrum source with a flux of 0.29 Jy at 1.4 GHz (Jackson et al. 2007; Beasley et al. 2002; Marecki et al. 1999; Patnaik et al. 1992). The radio source is associated with a star-like object in the WHT images and listed as a quasar by Andrei et al. (2009), but no redshift is reported. Source F is a compact source (but resolved in the 1280 and 610 MHz images) and has an optical counterpart in the WHT images.

The most prominent source in the GMRT and WSRT images is B3 0559+422B (source B). The source is also visible in the 74 MHz VLSS survey (Cohen et al. 2007) and listed as VLSS J0603.2+4217. In the L-band image, the source has a largest angular size of  $8.7'$ , which corresponds to a physical size of almost 1900 kpc. The source consists of a bright western



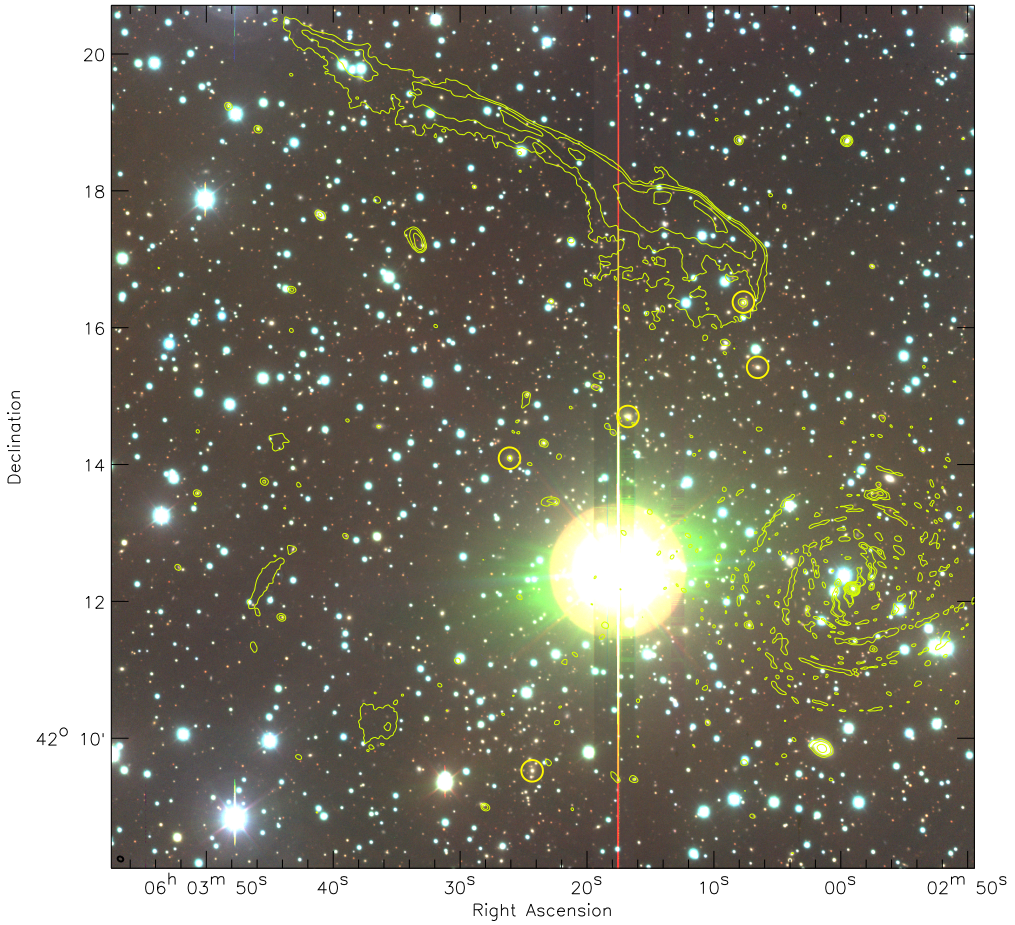


Figure 9.1: WHT V, R, I color image. Yellow contours are from the GMRT 610 MHz image (Fig. 9.4) and drawn at levels of  $[1, 2, 4, 8, \dots] \times 0.15 \text{ mJy beam}^{-1}$ . Galaxies for which spectra were obtained are marked with circles, see also Table 9.3 and Fig. 9.2. The spiral pattern at the bottom right is due to residual calibration errors around the source B3 0559+422A.

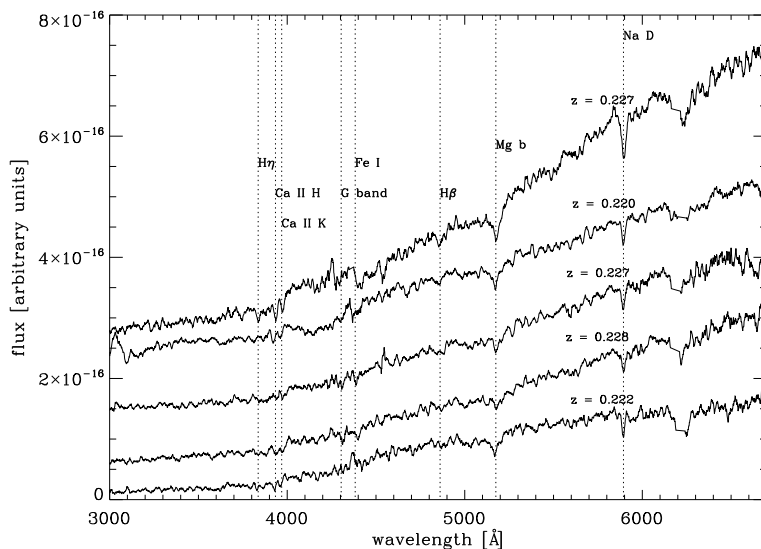


Figure 9.2: Rest-frame WHT ISIS spectra for the galaxies listed in Table 9.3. The order (from top to bottom) is the same as in Table 9.3. Various absorption features are indicated.

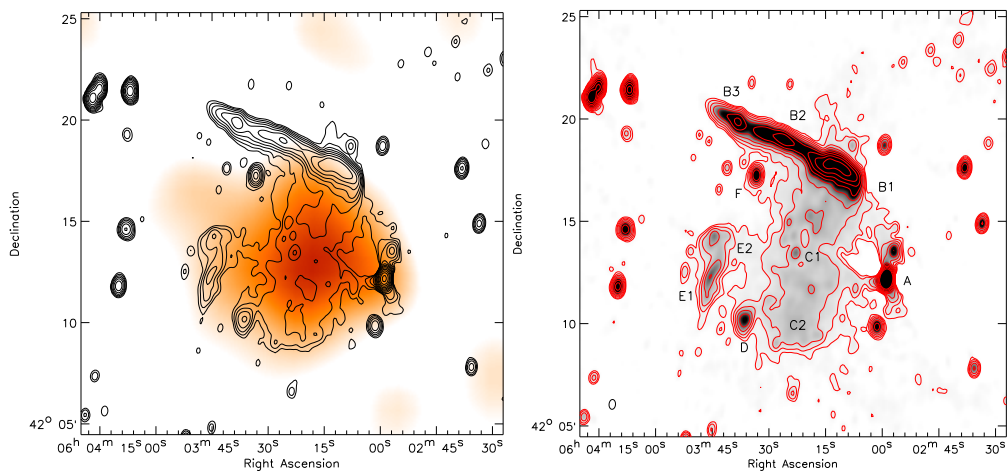


Figure 9.3: Left: X-ray emission from ROSAT. The image from the ROSAT All Sky Survey was smoothed with a  $200''$  FWHM Gaussian and is shown in orange colors. Solid contours are from the WSRT L-band image and drawn at levels of  $[1, 2, 4, 8, \dots] \times 0.15 \text{ mJy beam}^{-1}$ . Right: WSRT L-band image (1160–1780 MHz) with sources labelled. Contour levels are drawn at  $[1, 2, 4, 8, \dots] \times 80 \mu\text{Jy beam}^{-1}$ . The beam size is  $29'' \times 19''$  and indicated in the bottom left corner of the image.

Table 9.4: Diffuse radio sources in 1RXS J0603.3+4214

Source	$S_{1382\text{MHz}}$ mJy	$P_{1.4\text{GHz}}$ $10^{24} \text{ W Hz}^{-1}$	LLS kpc	$\alpha$
B	$319.5 \pm 14.8$	60	1870	$-1.10 \pm 0.02$
C	$35.9 \pm 1.7$	6.8	1700–2100	$-1.15 \pm 0.06$
D	$5.38 \pm 0.27$	1.0	215	$-1.10 \pm 0.05$
E	$9.48 \pm 0.90$	1.8	860	$-1.0 \pm 0.2$

part (B1) and a fainter linear extension to the northeast (B2, B3). The radio emission brightens and fades two times along this extension, while the width of the source also varies. In the high-resolution 1280, 610, and 325 MHz images, the source displays a complex filamentary morphology. Some “streams” of emission extend from the northern part of B1 to the south. The northern boundary of the source is sharp, while the emission fades more slowly at the southern part. We classify source B as a radio relic because of the lack of optical counterparts, its polarization and spectral properties (see Sects. 9.4 to 9.6), and the large physical elongated size and peripheral location in the cluster.

Extending from B1 to the south, there is a patch of low surface brightness emission (C: subdivided into C1 and C2). A hint of emission is visible north of B1 in the L-band and 325 MHz images, possibly associated with C1. The surface brightness decreases more rapidly at the south side of C (C2) than at the east and west sides. If we consider the faint emission north of B1 to be part of C then the source has a largest angular size of about  $10'$  (i.e., a physical extent of 2.1 Mpc). Only counting the emission south of B1 the source extends about  $8'$ . We classify source C as the giant elongated radio halo because it roughly follows the X-ray emission from the ICM and has different spectral index properties than source B. The radio power of  $6.8 \times 10^{24} \text{ W Hz}^{-1}$  falls on the  $L_X - P_{1.4\text{GHz}}$  correlation for giant radio halos (e.g., Liang et al. 2000; Cassano et al. 2006). However, at the most southern part of C2 the surface brightness increases slightly. This is best seen in the 147 and 241 MHz images (Figs. 9.6 and 9.7). The southern end of C2 could therefore be the “counter” radio relic of B1 (see Sect. 9.7). Although, we can also not exclude the possibility that it is part of the radio halo.

Another diffuse elongated source is located to the east of C1. The source consists of two parts, E1 and E2. We classify source E as a radio relic because we could not find an optical counterpart associated with it and it is located at the eastern boundary of the X-ray emission. The extent of E is  $4'$  which corresponds to 860 kpc. Source D is another diffuse source without any optical counterpart in the WHT images, which we also classify as a radio relic. It has a largest angular size of  $1.0'$  in the GMRT 610 MHz image and displays hints of a complex morphology (Fig. 9.5), very different from a typical radio galaxy.

## 9.4 Radio spectra

### 9.4.1 Spectral index maps

We created radio spectral index maps using the GMRT and WSRT data. We first made radio maps at roughly the same resolution applying suitable tapers in the uv-plane and using uniform

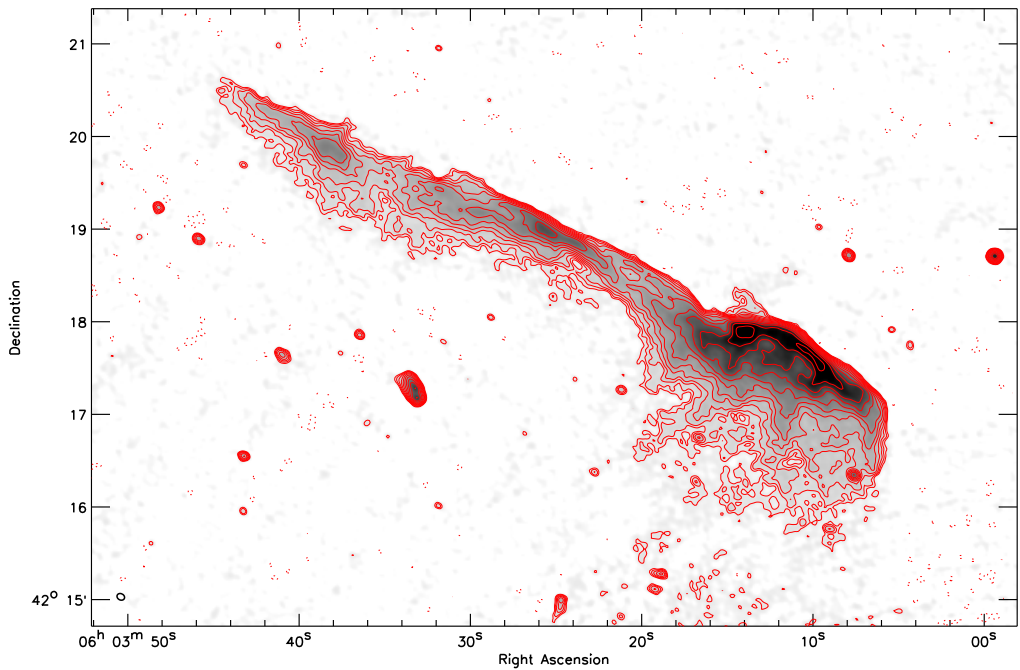


Figure 9.4: GMRT 610 MHz image. Contour levels are drawn at  $\sqrt{[1, 2, 4, 8, \dots]} \times 4\sigma_{\text{rms}}$ . Negative  $-3\sigma_{\text{rms}}$  contours are shown by the dotted lines. The beam size is  $5.1'' \times 4.1''$  and indicated in the bottom left corner of the image.

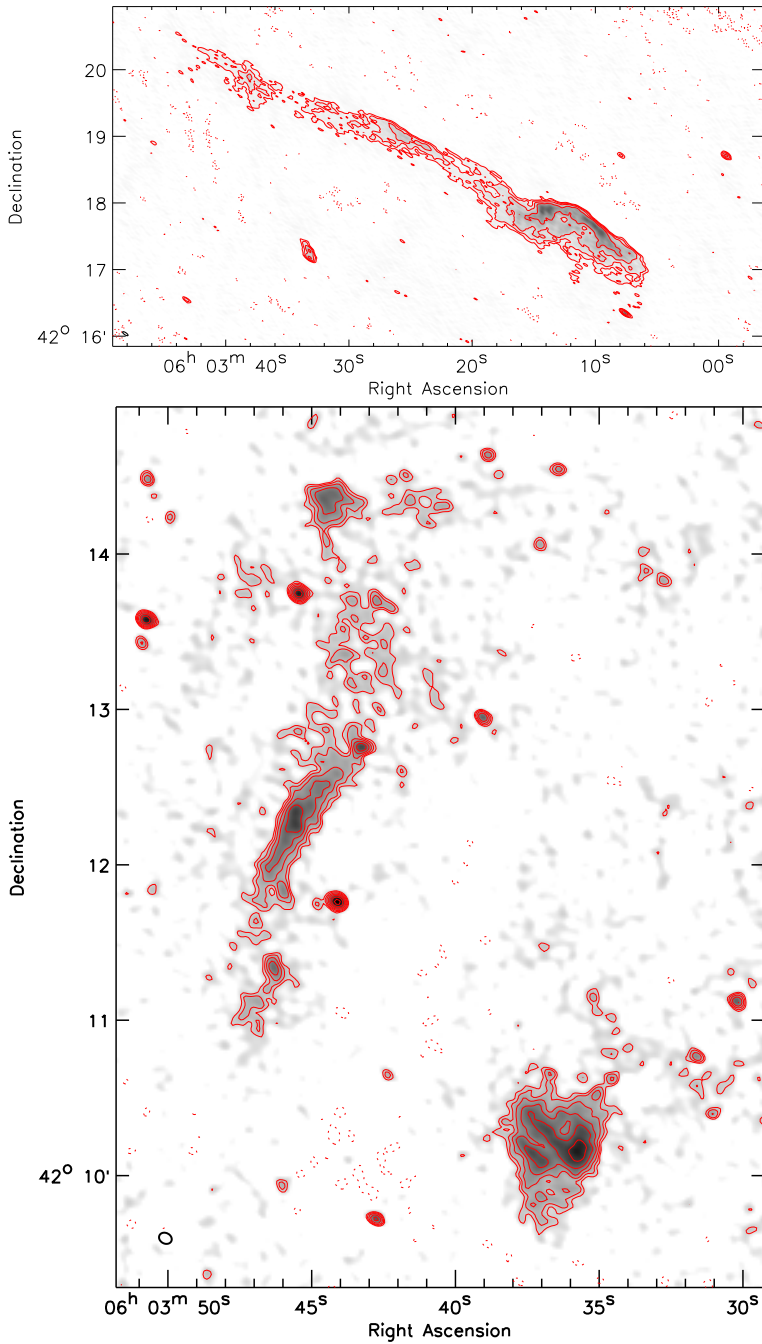


Figure 9.5: Top 1280 MHz image. Contour levels are drawn at  $[1, 2, 4, 8, \dots] \times 4\sigma_{\text{rms}}$ . Negative  $-3\sigma_{\text{rms}}$  contours are shown by the dotted lines. The beam size is  $5.8'' \times 2.0''$  and indicated in the bottom left corner of the image. Bottom: GMRT 610 MHz cutout around sources D and E. Contours are drawn as in Fig. 9.4.

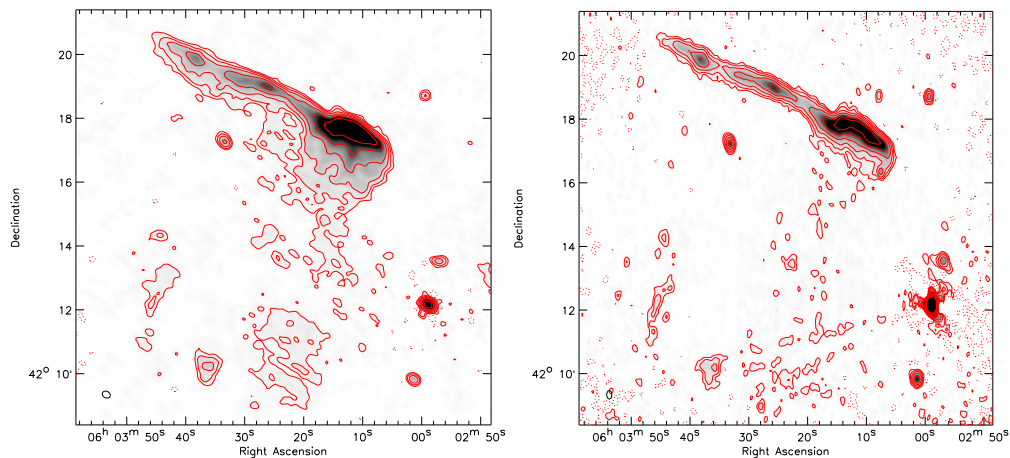


Figure 9.6: Left: GMRT 241 MHz image. Contour levels are drawn at  $[1, 2, 4, 8, \dots] \times 4\sigma_{\text{rms}}$ . Negative  $-3\sigma_{\text{rms}}$  contours are shown by the dotted lines. The beam size is shown in the bottom left corner of the image. Right: WSRT 2272 MHz image, contours are drawn as in the left panel.

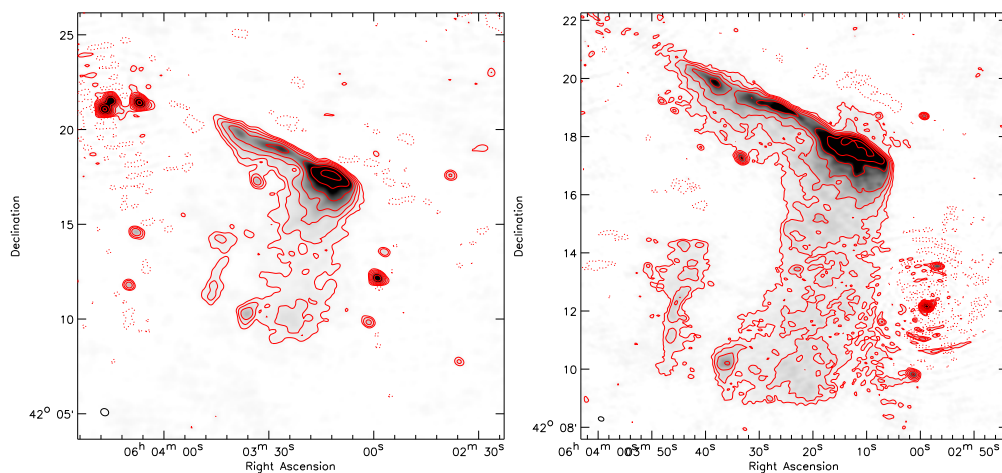


Figure 9.7: Left: GMRT 147 MHz image. Contour levels are drawn at  $[1, 2, 4, 8, \dots] \times 4\sigma_{\text{rms}}$ . Negative  $-3\sigma_{\text{rms}}$  contours are shown by the dotted lines. The beam size is shown in the bottom left corner of the image. Right: GMRT 325 MHz image. Contour levels are drawn at  $[1, 2, 4, 8, \dots] \times 5\sigma_{\text{rms}}$ . Negative  $-5\sigma_{\text{rms}}$  contours are shown by the dotted lines.

weighting. We discarded data below  $0.25 \text{ k}\lambda$  to select only common inner uv-ranges. The maps were then convolved to the same resolution. A high-resolution ( $7.9'' \times 6.2''$ ) spectral index map between 610 and 325 MHz is shown in Fig. 9.8. Pixels with values below  $5\sigma_{\text{rms}}$  were blanked. A medium-resolution ( $20'' \times 18''$ ) spectral index map between 2272 and 147 MHz was also made by fitting a second order polynomial in  $\log(S) - \log(\nu)$  space through the flux measurements at 2272, 1714, 1382, 1221, 610, 325, 241, and 147 MHz, see Fig. 9.9 (left panel). Pixels with values below  $1.5\sigma_{\text{rms}}$  were blanked. To map the spectral index across the low surface brightness halo emission in the cluster, we also made a low-resolution spectral index map. We convolved the eight maps with a  $35''$  FWHM Gaussian (giving a resolution of approximately  $40''$ ) and fitted a power-law spectral index to minimize the number of fitted parameters. Pixels with a spectral spectral index error  $> 0.7$  were blanked (Fig. 9.9, right panel).

The spectral index across relic B displays a clear north-south gradient, with a spectral index of about  $-0.6$  to  $-0.75$  on the north side of the relic, steepening to  $\sim -1.9$  at the south side of B2 and B3 and to  $\lesssim -2.5$  for B1. The spectral index gradient is visible over the entire length of the relic. The high-resolution 610–325 MHz spectral index map reveals the same general trends for relic B as in the medium-resolution map. However, the SNR on the spectral index is somewhat lower, mainly because of the smaller frequency span. We note that the spectral index at the front of B2 and B3 has a steeper spectral index (about  $-0.9$  to  $-1.1$ ) in the region where the surface brightness drops (i.e., at the intersection B1–B2 and B2–B3).

The spectral index across Relic E varies mostly between  $-1.0$  to  $-1.2$ . There are no systematic trends visible across the relic, except that the north part of E3 has a somewhat flatter spectral index, see Fig. 9.9. The spectral index for relic D steepens from  $-1.0$  to  $-1.3$  from south to north. The spectral index across the radio halo (C) is difficult to determine as the SNR is low, but it roughly varies between  $-1.5$  and  $-0.8$  with an average of  $-1.1$ . There is a hint of spectral flattening for the center of the halo, while to the north and south of it the spectral index is steeper on average.

## 9.4.2 Integrated radio spectra

We determined the integrated radio spectra of the components, taking the same maps which were used to create the medium-resolution ( $20'' \times 18''$ ) spectral index map to minimize the effects of different uv-coverage. In addition, we added flux measurements at 74 MHz and 4.9 GHz for relic B from the VLSS survey and the WSRT observations. The radio spectrum is shown in Fig. 9.10 and is well fitted by a single power-law with  $\alpha = -1.10 \pm 0.02$  between 74 and 4900 MHz. For relics D and E we find integrated spectral indices of  $-1.10 \pm 0.05$  and  $-1.0 \pm 0.2$ . For source C we find  $\alpha = -1.15 \pm 0.06$ . The integrated radio spectra do not show clear evidence for spectral breaks or turnovers, although the radio spectrum for E is poorly determined, see Fig. 9.11.

## 9.5 Radio color-color diagrams

We investigated the detailed spectral shape of the relic emission. We first divided the relic into two parts, B1 and B2+B3, which we analyzed separately. These parts were further subdivided into regions ( $\alpha_{\text{ref}}$ ) within a specific spectral index range of 0.1 units, using the spectral index map from Fig. 9.9 (left panel). The resulting spectra, including first order polynomial fits through the data points (in  $\log(J) - \log(\nu)$  space) are shown in Fig. 9.12. The fluxes were normalized by

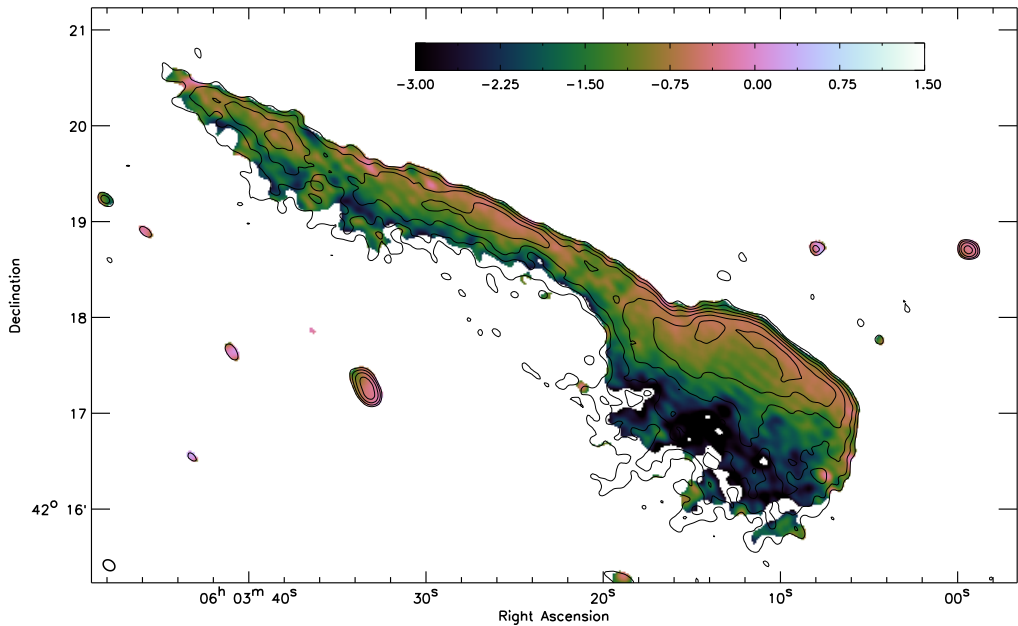


Figure 9.8: GMRT 610–325 MHz spectral index map. Contour levels from the GMRT 325 MHz image are drawn at  $[1, 4, 16, 64, \dots] \times 6\sigma_{\text{rms}}$  and the spectral index map has a resolution of  $7.9'' \times 6.2''$ . Pixels below  $5\sigma_{\text{rms}}$  are blanked.



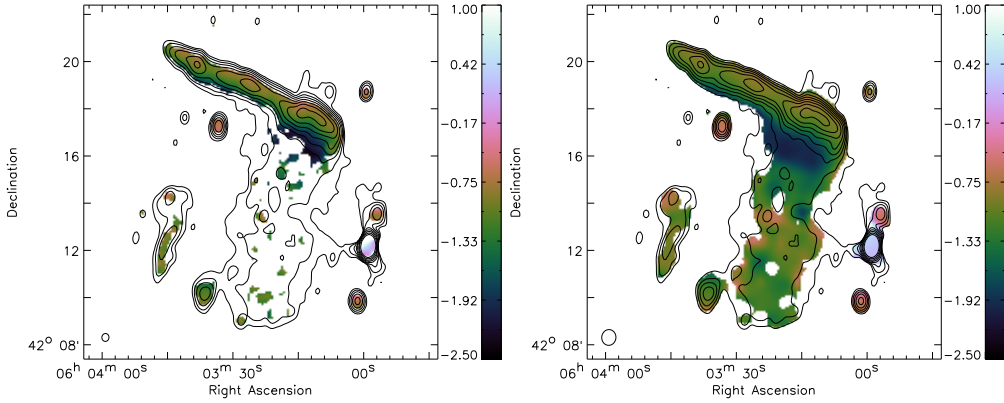


Figure 9.9: Left: Fitted spectral index map between 2272 and 147 MHz. The spectral index map was made by fitting a second order polynomial in  $\log(S) - \log(\nu)$  for each pixel in the maps at 2272, 1714, 1382, 1221, 610, 325, 241 and 147 MHz. Contour levels are drawn at  $[1, 2, 4, 8, \dots] \times 0.175 \text{ mJy beam}^{-1}$  and are from the L-band image in Fig. 9.3. The spectral index map has a resolution of  $20'' \times 18''$  and pixels below  $1.5\sigma_{\text{rms}}$  were blanked. Right: Fitted spectral index (2272 and 147 MHz) for each pixel in the maps at 2272, 1714, 1382, 1221, 610, 325, 241 and 147 MHz. The individual maps were convolved with Gaussians of  $35''$  FWHM and pixels with a spectral index error  $> 0.7$  were blanked, contours are drawn as in the left panel.

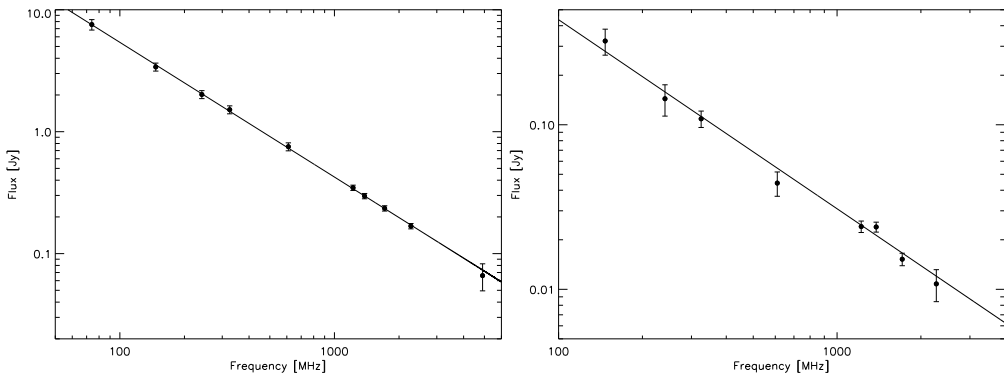


Figure 9.10: Integrated radio spectrum for radio relic B (left) and halo C (right). The lines are fitted straight power-laws with indices given in Table 9.4.

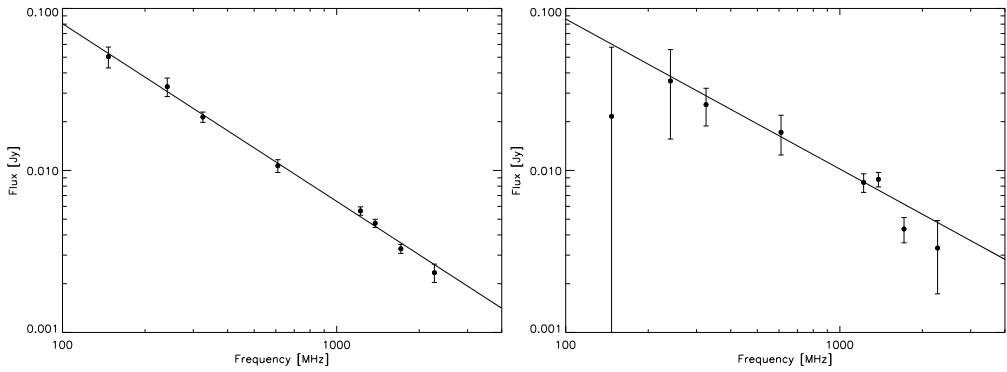


Figure 9.11: Integrated radio spectra for sources D (left), and E (right). The lines are fitted straight power-laws with indices given in Table 9.4.

dividing by the number of pixels found in each region, i.e., we work in surface brightness units. Each spectra thus corresponds to a region from the spectral index map where  $\alpha_{\text{ref}} - 0.05 < \alpha_{\text{ref}} < \alpha_{\text{ref}} + 0.05$ , with  $\alpha_{\text{ref}} = -0.65, -0.75, -0.85$ , etc. We limited  $\alpha_{\text{ref}}$  to  $-1.85$  and  $-1.65$  for B1 and B2+B3, respectively, to retain sufficient SNR at the highest frequency map (at 2272 MHz). We use these spectra as a starting point for creating the radio color-color diagrams.

### 9.5.1 Spectral models

In the model put forward by Ensslin et al. (1998), relics trace shock waves in which particles are accelerated by the DSA mechanism. Without projection effects and mixing of emission, and all properties of the shock remaining constant, the spectra at the different locations should simply reflect the energy losses of the radiating particles. Assuming an edge-on planar shock-wave, the time since acceleration for particles at a given location behind the front of the relic is simply  $l/v_d$ , with  $l$  the distance from the front of the shock and  $v_d$  the shock downstream velocity. According to DSA-theory, the injection spectral index  $\alpha_{\text{inj}}$  is linked to the Mach number ( $\mathcal{M}$ ) of the shock by (e.g., Blandford & Eichler 1987)

$$\alpha_{\text{inj}} = \frac{1}{2} - \frac{\mathcal{M}^2 + 1}{\mathcal{M}^2 - 1}. \quad (9.1)$$

The integrated spectral index is steeper by about 0.5 units compared to  $\alpha_{\text{inj}}$  for a simple shock model where the electron cooling time is much shorter than the lifetime of the shock (Miniati 2002). Most of the synchrotron radiation we observe comes from the “critical” frequency  $\nu_c$

$$\nu_c = \frac{3\gamma^2 e B_{\perp}}{4\pi m_e c}. \quad (9.2)$$

Directly behind the front of the shock, the spectra should have a power-law shape of the form  $I(\gamma) = I_0 \gamma^{\alpha_{\text{inj}}}$ , under the usual assumption that one starts with a power-law distribution of relativistic electrons  $N(\gamma) = N_0 \gamma^{s_{\text{inj}}}$ , where  $s_{\text{inj}} = 1 - 2\alpha_{\text{inj}}$ . Synchrotron and IC (radiation) losses

steepen the distribution  $N(\gamma)$  above certain break energy ( $\gamma_{\text{brk}}$ ). This also causes the radio spectrum to steepen above a corresponding break frequency ( $\nu_{\text{brk}}$ ), with

$$\nu_{\text{brk}} \propto \frac{B}{\left( \left[ B^2 + B_{\text{CMB}}^2 \right] t \right)^2}, \quad (9.3)$$

and  $t$  the time since injection.

The full spectral shapes are given by the Jaffe-Perola (Jaffe & Perola 1973) and Kardashev-Pacholczyk models (Kardashev 1962; Pacholczyk 1970). The JP-model takes into account the spectral ageing due to synchrotron and IC losses and that the pitch angles of the synchrotron emitting electrons are continuously isotropized on a timescale shorter than the radiative timescale. In the KP-model, the pitch angle of the electrons remains in its original orientation with respect to the magnetic field. The JP model is more realistic from a physical point of view, as an anisotropic pitch angle distribution will become more isotropic due to changes in the magnetic field strength between different regions and scattering by self-induced Alfvén waves (e.g., Carilli et al. 1991; Slee et al. 2001).

In addition to the above “single burst” models, there is the continuous injection (CI) model (Pacholczyk 1970), i.e., a fresh supply of particles is injected continuously and the so-called KGJP or KGKP models (Komissarov & Gubanov 1994), where particles are injected for a fixed period of time after which the supply of newly injected electrons is switched off.

## 9.5.2 Effect of resolution on surface brightness

If radiative losses are the dominant effect then all spectra for different parts of the relic should line up at some fiducial low energy/frequency where radiation losses are not important. The spectra displayed in Fig. 9.12 should therefore all line up at low enough frequencies. Part of such a trend is indeed visible. Although, the spectra with  $\alpha_{\text{ref}} = -0.65, -0.75$  have a lower surface brightnesses than we naively expect. We attribute this to the fact that the pixels, from which these spectra are determined, are all located on the sharp outer edge of the relic, where the emission drops abruptly to zero within a single beam element. Since the resolution of the spectral index map is only about  $20''$  and there are about 4 pixels per beam, the regions with the flattest spectral index are all located on pixels where the surface brightness drops at the front of the relic due to the finite beam size. This can be seen by looking at the black contours in Fig. 9.9, i.e., the surface brightness does not peak at the region with the flattest spectral index. Comparing these contours to the higher resolution images in Figs. 9.4 and 9.5, we find however that the outer rim of the relic is indeed the brightest part of the relic. The lower surface brightness for the  $\alpha_{\text{ref}} = -0.65, -0.75$  regions is thus caused by the low spatial resolution of the spectral index map. This is also confirmed by the high-resolution 325–610 MHz spectral index map, see Fig. 9.8.

It is interesting to note that the spectra for the regions with a flattest spectral index are all relatively straight and show little deviations from a pure power-laws (Fig. 9.12). Going to the regions with a steeper  $\alpha_{\text{ref}}$ , the spectral shapes change and display signs of curvature at the higher frequencies. These changes happens gradually from the regions with a flat  $\alpha_{\text{ref}}$  to a steeper  $\alpha_{\text{ref}}$ .

### 9.5.3 Color-color diagrams

To better investigate the spectral shape we use so called three frequency “color-color” diagrams for which the spectral indices for different region of the source can all be put in a single diagram (Katz-Stone et al. 1993). On the x-axis we plot the low- frequency spectral index and on the y-axis the high-frequency one. Color-color diagrams are particularly useful to discriminate between theoretical synchrotron spectral models, such as the JP, KP, CI, KGJP, KGKP models described before.

Another advantage of color-color diagrams is that the shapes traced out in the diagrams are conserved for changes in the magnetic field, adiabatic expansion or compression, and the radiation losses, for standard spectral models. We observe a different portion of the spectrum for each different frequency or source physical condition (e.g., local  $B$  field). We can thus use the observed curve to constrain the different models (JP, CI, KP, etc.) and injection spectral indices. Mixing of emission, for example from regions with different  $B$  strengths or radiation losses, due the finite resolution of the observations or projection effects, will lead to different curves in the color-color diagrams. If a global spectral shape exists, it also allows for a better effective frequency sampling and provides sampling of a larger range of electrons energies.

#### 9.5.3.1 Color-color diagrams for B1 and B2+B3

The color-color diagrams for B1 and B2+B3 are shown in Fig. 9.13 (left and right panels, respectively). The points in the color-color diagrams seem to trace out single curves. This suggests the existence of a global spectral shape for these regions. The curves are similar for the B1 and B2+B3 regions, but they slightly differ for  $\alpha_{\text{ref}} \lesssim -1.4$ .

Tracing the curves back to the  $\alpha_{241}^{610} = \alpha_{1382}^{2272}$  (i.e., power-law) line gives the injection spectral index. In both cases we find  $\alpha_{\text{inj}}$  is about  $-0.6$  to  $-0.7$  for B1 and B2+B3, in agreement with the spectral index maps. The color-color diagrams highlight the trend of increasing spectral curvature, i.e., distance from the power-law line, with decreasing  $\alpha_{\text{ref}}$  (Fig. 9.12). The spectra for  $\alpha_{\text{ref}} = -0.65, -0.75$  are power-laws. We also indicated various spectral models in the diagrams. We compare the observed curves in the color-color diagrams to the some of the standard spectral models.

The observed curve is clearly different from the continuous injection spectral model. The CI model only steepens to  $\alpha = \alpha_{\text{inj}} - 0.5$  (Pacholczyk 1970). The KP model (with  $\alpha_{\text{inj}} = -0.6$ ) roughly follows the data for flat  $\alpha_{\text{ref}}$ , but deviates for  $\alpha_{\text{ref}} \lesssim -1$ . However, in the end the KP curve bends back and returns to the  $\alpha_{241}^{610} = \alpha_{1382}^{2272}$  line. We do not see evidence for a turn back to the  $\alpha_{241}^{610} = \alpha_{1382}^{2272}$  line in the data, although we do not sample this part of the diagram well because of insufficient SNR at high-frequencies.

The JP model (plotted for  $\alpha_{\text{inj}} = -0.6$  and  $-0.7$ ) follows the KP model for flat  $\alpha_{\text{ref}}$ . Instead of turning back to the  $\alpha_{241}^{610} = \alpha_{1382}^{2272}$  line, the spectral curvature keeps increasing. The data also show this trend of increasing curvature, but less quickly than the JP curve. A KGJP model with  $\alpha_{\text{inj}} = -0.7$  matches the data for B2+B3 very well. The KGJP curves in Fig. 9.13 are for particles injected continuously for about  $0.6 \times 10^8$  yr and  $B = 9 \mu\text{Gauss}$  (see Sect. 9.7.3). The KGJP model also provides a better match for the B1 region compared to the KP and JP curves. Although, in the regions with the steepest  $\alpha_{\text{ref}}$  values the KGJP model still overestimates the amount of curvature. A KGJP model can be thought of as an integration of JP spectra with a range of spectral ages, up to the oldest population of electrons. At first, the KGJP model follows the CI model until at some point in time the supply of newly injected electrons is shut off.

### 9.5.3.2 The effect of resolution and mixing

One important effect is mixing of emission within the beam. Each beam samples superpositions of regions with potentially physical different conditions. To investigate the effect of resolution in the color-color diagrams, we decreased the resolution of the spectral index maps by convolving them with Gaussians of 60'' FWHM. The data for the lower resolution maps are also displayed in Fig. 9.13. The effect of the lower resolution is that the curve ends up closer to the  $\alpha_{241}^{610} = \alpha_{1382}^{2272}$  line. This is expected because the total integrated spectrum of the relic has a power-law shape (Fig. 9.10).

We also investigated for B1, the effect of a possible underlying flux component from the radio halo C. For this, we determined the average spectrum of the radio halo and subtracted this flux contribution at each frequency. This however did not substantially change the resulting color-color diagram for B1 because the surface brightness of the relic is much higher than that of the radio halo.

Our conclusion is that mixing of emission (from regions with different  $B$ -fields or different electron energy distributions, etc.) pushes the spectra closer to power-law shapes. The spectral curvature we find can thus be regarded as a lower limit on the actual curvature and it is therefore important that when searching for spectral curvature one retains sufficient spatial resolution (enough to properly resolve the spectral variations).

## 9.5.4 Global spectrum

Since the data points trace out a well defined curve in the color-color diagrams, we have attempted to map the flux measurements onto a single spectral shape using the “shift-technique” described by Katz-Stone et al. (1993); Rudnick & Katz-Stone (1996); Rudnick (2001). This allows for a much better sampling in frequency, and maps out the spectrum over a larger range of electron energies. The idea is that the individual radio spectra for different  $\alpha_{\text{ref}}$  regions each trace some part of the “global spectrum” (or electron energy distribution) of the source, depending on the energy losses, and magnetic fields in these regions. The shifts (in  $\log(I)$ - $\log(\nu)$  space) remove the effects of possible different local magnetic field strengths, electron densities, radiative energy losses, and adiabatic energy gains/losses.

We shifted the spectra, displayed Fig. 9.12, in  $\log(I)$ - $\log(\nu)$  space and tried to line them all up. This went remarkably well, indicating we indeed have a single electron energy distribution (or global spectral shape) that is consistent with the spectra for each individual region. The two resulting spectra (for B1 and B2+B3) are displayed in Fig. 9.14. As can be seen it allows for an almost continuous sampling of the radio relic spectrum over about 4 orders of magnitude in frequency (two orders of magnitude in energy, see Eq. 9.2).

Similar to the color-color diagrams we find that the low-frequency part of the global spectrum has a power-law shape, with  $\alpha = -0.6$  to  $-0.7$ . At higher frequencies the spectrum steepens. We also compare the global spectra with some of the standard models in Fig. 9.14. The results are the same as for the color-color diagrams, i.e., the best match we find for a KGJP model and for B1 the KGJP spectral curvature is somewhat too high for  $\nu_{\text{eff}} \gtrsim 20$  GHz.

### 9.5.4.1 Shift diagrams

Interestingly, the shifts made to align up all the individual radio spectra to create Fig. 9.14 provide information about changes in the underlying physical parameters (Katz-Stone & Rudnick

1994). The shifts made in the frequency direction ( $\log(\nu)$ ), to line up the spectra, are related to  $\gamma^2 B$ . The shifts in  $\log(I)$  are related to  $N_T B$ , where  $N_T$  is the total number of relativistic electrons in the volume determined by the beam size.

By plotting the shifts which we needed to align up the individual spectra ( $\log(\nu)$  shifts against  $\log(I)$  shifts), we can investigate the contributions of the above mentioned quantities, i.e., which quantities cause the spectra to differ from region to region. The shift diagrams are shown in Fig. 9.15. For example, a slope ( $\delta \log(I)/\delta \log(\nu)$ ) of +1 indicates mainly variations in the magnetic field strength, a slope of infinity indicates density variations, and a slope of zero energy variations. If every line of sight samples the same physical conditions (i.e., the same magnetic field, path length through the source, number of relativistic particles at some fiducial low energy), then ageing alone would give a slope equal to the injection spectral index. The idea is that for spectral ageing you need to shift in  $\log(\nu)$  space to match up the break frequency, but then the spectrum will fall below the initial power-law injection spectrum, so a shift (up) in  $\log(I)$  is also required.

We find slopes of  $-0.83$  and  $-0.67$  in the shifts diagrams for B1 and B2+B3, respectively. We did not include the first three (B1) and two (B2+B3) points for fitting the slope. This because the  $\log(I)$ -shifts for these points are affected by the reduced surface brightness at the outer edge of the relic, see Sect. 9.5.2. The slopes are close to the injection spectral indices of  $-0.6$  to  $-0.7$  we found from the color-color diagrams. The slope for B1 deviates a little more, but overall the shift diagrams indicate that spectral ageing is likely the dominant factor in explaining the different spectral shapes from region to region. Apparently, the magnetic field and total number of number of relativistic electrons remain more or less constant for the different  $\alpha_{\text{ref}}$  regions.

## 9.6 RM-synthesis & polarization maps

### 9.6.1 Polarization maps

The distribution of the polarization E-vectors at 4.9 and 1.382 GHz are shown in Fig. 9.16. In the 4.9 GHz map, we find the relic to be polarized over its entire length (in the region with sufficient SNR). The E-vectors are mainly perpendicular to the relic's orientation, except at the eastern end of B1 (where the relic bends and is connected to the linear eastward extension B2). The polarization fraction across the relic varies between 10 and 60%, where it can be measured. At the front of B1, the polarization fraction is mostly between 15 and 30%, while at the front of B2 the fraction is 50% or higher. In the 4.9 GHz map we cannot determine the polarization fraction for B3 because the attenuation of the primary beam. It should be noted that the spatially averaged polarization fractions are lower.

At 1382 MHz the polarization fraction drops significantly for B1 and B2, compared to at 4.9 GHz. For region B3 we measure a polarization fraction as high as 40%, while for the brightest part of B2 it is about 5%, and for B1 it drops below 1%. The average polarization fractions and depolarization properties for relic B are described in Sect. 9.6.3.

### 9.6.2 RM-synthesis

Faraday rotation changes the intrinsic polarization angle ( $\chi_0$ ) depending on the wavelength ( $\lambda$ ) or frequency of the radiation. The Faraday depth ( $\phi$ ) is related to the properties of the plasma

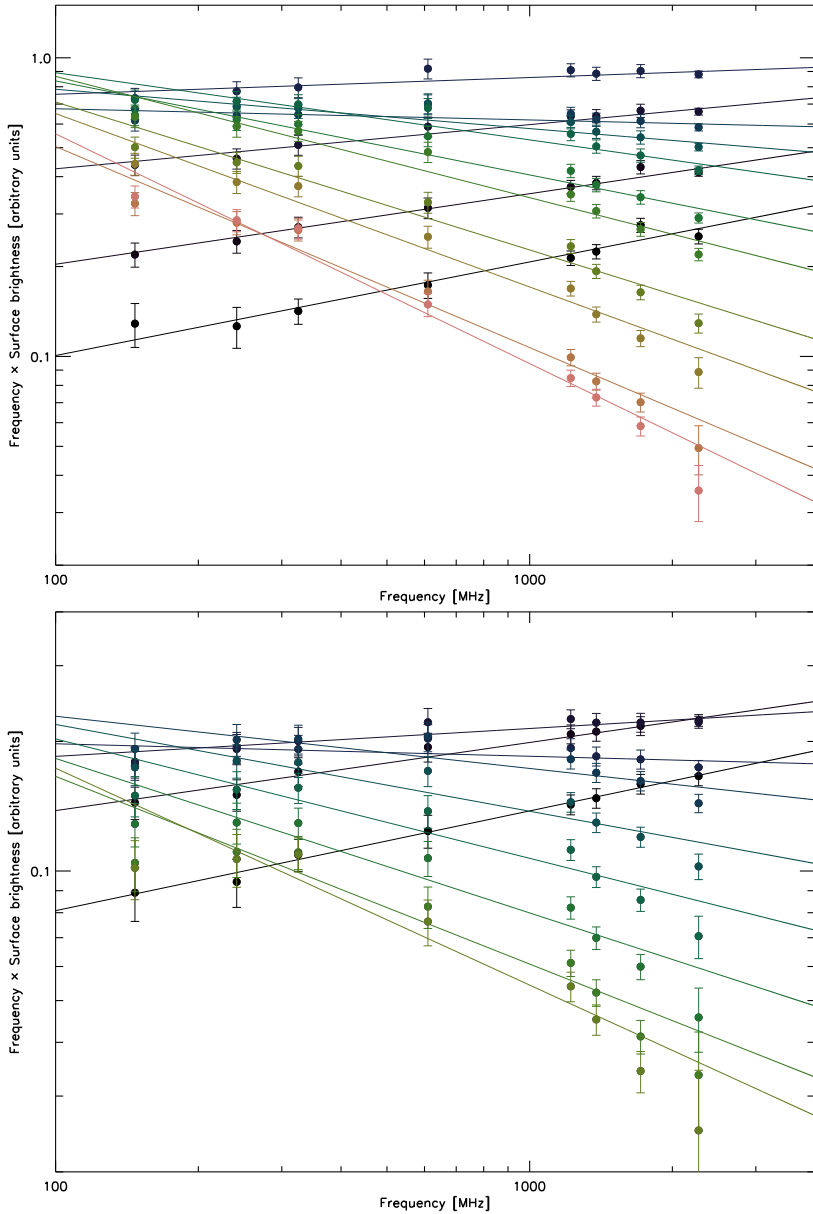


Figure 9.12: Normalized radio spectra for relic B1 (top) and B2+B3 (bottom). Each spectrum corresponds to a region from the spectral index map where  $\alpha_{\text{ref}} - 0.05 < \alpha_{\text{ref}} < \alpha_{\text{ref}} + 0.05$ , with  $\alpha_{\text{ref}} = -0.65, -0.75, \dots, -1.85$  for B1, and  $\alpha_{\text{ref}} = -0.75, -0.85, \dots, -1.65$  for B2+B3. The spectra are plotted in  $\nu \log(I) - \log(\nu)$  space to emphasize the differences between the spectra. First order polynomial fits in  $\log(I) - \log(\nu)$  space are shown by the solid lines to emphasize possible deviations from power-law radio spectra. Colors correspond to the different  $\alpha_{\text{ref}}$  and go from black, blue, green, to red (or from black to white in the greyscale version of the figure).

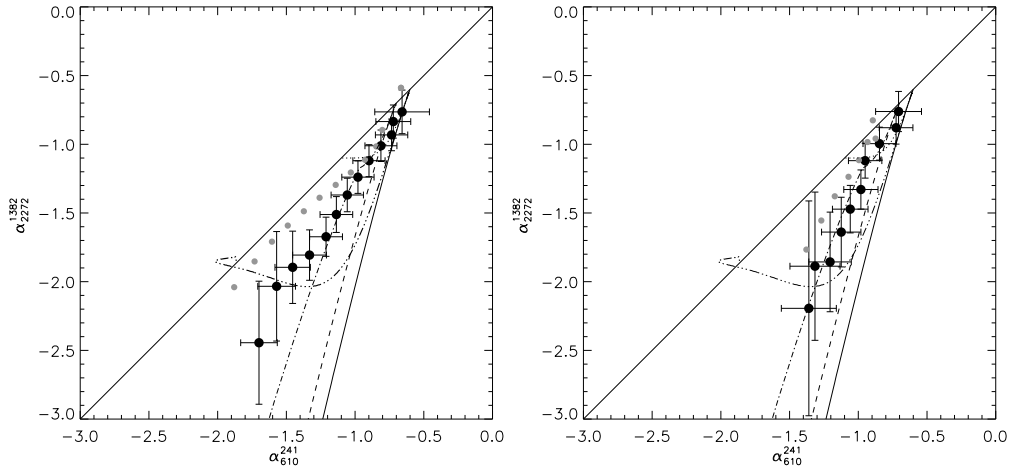


Figure 9.13: Color-color diagrams for B1 (left) and B2+B3 (right). Black data points are from the spectra displayed in Fig. 9.12. The solid black (slightly curved) line is a JP model with  $\alpha_{\text{inj}} = -0.6$ , the dashed black line a JP model with  $\alpha_{\text{inj}} = -0.7$ , the dash-triple-dotted line a KP model with  $\alpha_{\text{inj}} = -0.6$ , the dotted line a CI model with  $\alpha_{\text{inj}} = -0.6$ , and the dash-dotted line a KGJP model with  $\alpha_{\text{inj}} = -0.7$ . The grey data points are for the same data as the black points, except the maps were smoothed with a  $60''$  FWHM Gaussian. The  $\alpha_{241}^{610} = \alpha_{1382}^{2272}$  line is also shown for reference.

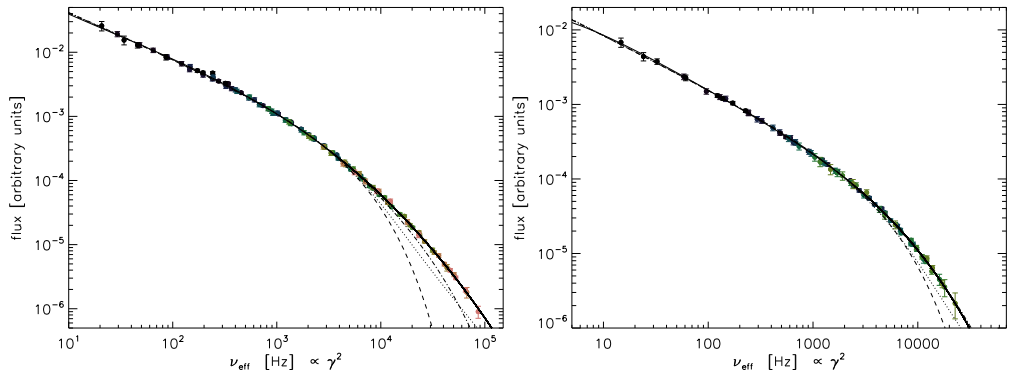


Figure 9.14: “Global” radio spectra for B1 (left) and B2+B3 (right). The spectrum for each  $\alpha_{\text{ref}}$  spectral region from Fig. 9.12 has been shifted in  $\log(I) - \log(\nu)$  space to create the “global” spectral shape. Fourth order polynomial fits through these data points are shown by the solid thin black lines. JP (dashed), KP (dotted) and KGJP (dash-dotted) models are also plotted. The color coding, based on the  $\alpha_{\text{ref}}$  regions, is the same as in Fig. 9.12.



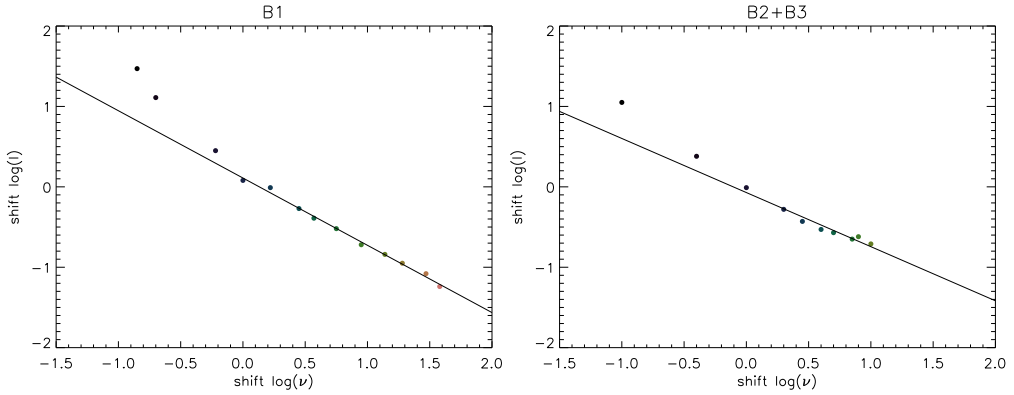


Figure 9.15: Shifts in  $\log(I) - \log(\nu)$  space, for B1 (left) and B2+B3 (right), needed to line up the radio spectra displayed in Fig. 9.14. A line is fitted through the data points, excluding the first three (B1) or two (B2+B3) points. Color coding for the  $\alpha_{\text{ref}}$  regions is the same as in Fig. 9.12.

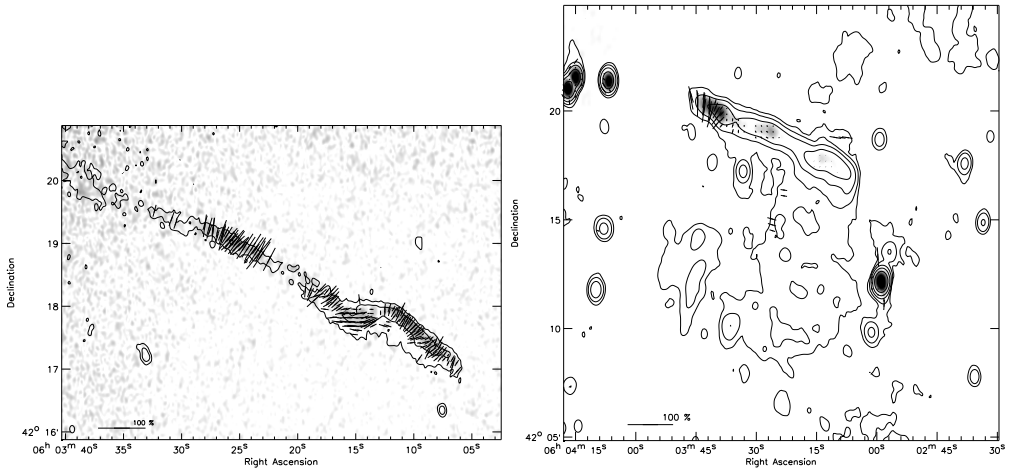


Figure 9.16: Left: WSRT 4.9 GHz polarization E-vector map. Total polarized intensity is shown as grayscale image. Vectors depict the polarization E-vectors, their length represents the polarization fraction. The length of the E-vectors are corrected for Ricean bias (Wardle & Kronberg 1974). A reference vector for a polarization fraction of 100% is shown in the bottom left corner. No vectors were drawn for pixels with a SNR < 3 in the total polarized intensity image. Contour levels are drawn at  $[1, 4, 16, 64, \dots] \times 3\sigma_{\text{rms}}$  and are from the Stokes I image. The beam size is  $7.0'' \times 4.7''$  and indicated in the bottom left corner of the image. Right: WSRT 1382 MHz polarization E-vector map. Total polarized intensity is shown as grayscale image. No vectors were drawn for pixels with a SNR < 4 in the total polarized intensity image. Contour levels are drawn at  $[1, 4, 16, 64, \dots] \times 3\sigma_{\text{rms}}$  and are from the Stokes I image.

casing the Faraday rotation (Burn 1966; Brentjens & de Bruyn 2005)

$$\phi(\mathbf{r}) = 0.81 \int_{\text{source}}^{\text{telescope}} n_e \mathbf{B} \cdot d\mathbf{r} \text{ [rad m}^{-2}\text{]}, \quad (9.4)$$

where  $d\mathbf{r}$  is an infinitesimal path length in parsec along the line of sight,  $\mathbf{B}$  the magnetic field in  $\mu\text{Gauss}$  and  $n_e$  the electron density in  $\text{cm}^{-3}$ . The sign is defined to be positive for a magnetic field pointing towards the observer. The rotation measure (RM) is defined as

$$\text{RM} = \frac{d\chi(\lambda^2)}{\lambda^2}. \quad (9.5)$$

If there is only one source along the line of sight (without internal Faraday rotation), the Faraday depth is equal the rotation measure (RM) at all wavelengths. In other words, all polarized emission is observed at a single Faraday depth  $\phi$ . The observed polarization angle ( $\chi$ ) is then

$$\chi = \chi_0 + \phi\lambda^2. \quad (9.6)$$

In more complicated situations this relation is not valid (e.g., Vallee 1980; Sokoloff et al. 1998). By expressing the polarization as a complex vector  $P = pe^{2i\chi} = Q + iU$ , with  $p$  the intrinsic polarization Burn (1966) showed that

$$P(\lambda^2) = \int_{-\infty}^{+\infty} F(\phi)e^{2i\phi\lambda^2} d\phi, \quad (9.7)$$

where  $F(\phi)$  is the Faraday dispersion function, i.e., the complex polarized surface brightness per unit Faraday depth. Eq. 9.7 is invertible if the intrinsic polarization angle  $\chi_0$  is constant as function of  $\lambda$ , then  $F(\phi)$  can be found by measuring  $P(\lambda^2)$

$$F(\phi) = \int_{-\infty}^{+\infty} P(\lambda^2)e^{-2i\phi\lambda^2} d\lambda^2. \quad (9.8)$$

With modern correlator backends, such as the one at the WSRT or EVLA,  $P(\lambda^2)$  can be measured over a large number of frequency channels. If  $\phi\delta\lambda^2 \ll 1$ , with  $\delta\lambda^2$  the channel width in wavelength squared, Brentjens & de Bruyn (2005) showed that Eq. 9.8 can be approximated as

$$\tilde{F}(\phi) \approx K \sum_{i=1}^N w_i P_i e^{-2i\phi(\lambda_i^2 - \lambda_0^2)}, \quad (9.9)$$

with  $w_i$  being some weights and  $K$  a normalization factor

$$K = \left( \sum_{i=1}^N w_i \right). \quad (9.10)$$

An extra  $\lambda_0^2$  has been added in the exponent in Eq. 9.9 by Brentjens & de Bruyn who showed that this results in a better behaved or rotation measure spread function (RMSF), with

$$\lambda_0^2 = \frac{\sum_{i=1}^N w_i \lambda_i^2}{\sum_{i=1}^N w_i}, \quad (9.11)$$

and the RMSF given by

$$\text{RMSF}(\phi) = K \sum_{i=1}^N w_i e^{-2i\phi(\lambda_i^2 - \lambda_0^2)}. \quad (9.12)$$

Because  $P$  is not measured for every possible  $\lambda_i^2$ , the true Faraday depth function is related to Eq. 9.9 by a convolution

$$\tilde{F}(\phi) = F(\phi) * \text{RMSF}(\phi). \quad (9.13)$$

Depending on the sidelobe structure of the RMSF (which can be adjusted by choosing the weights  $w_i$ ) a brighter component can contaminate the response of fainter components in  $\tilde{F}(\phi)$  and therefore deconvolution might be necessary. The one-dimensional deconvolution algorithm which has been used is a simple extension of Högbom (1974) RM-CLEAN algorithm to the complex domain as described by Brentjens (2007), see also Heald et al. (2009). It works as follows

1. For a spatial pixel the maximum of  $|\tilde{F}(\phi)|$  is found and the location of the peak is stored ( $\phi_{\text{peak}}$ ).
2. If this maximum value is higher than a user defined cutoff, the RMSF is shifted to the location of the peak ( $\phi_{\text{peak}}$ ) and a scaled version (i.e., using a gain of 0.1) is subtracted from  $\tilde{F}(\phi)$ . Since the RMSF is complex, a multiplication with a phase factor is needed which depends on the phase of  $\tilde{F}(\phi_{\text{peak}})$ .
3. The complex scaling factor, which was used to shift and subtract the RMSF, is stored as a clean component.
4. Steps 2–4 are repeated until a user defined threshold is reached or the number of iterations has reached a predefined maximum.
5. Optionally, the clean components are restored with Gaussians with a FWHM matched to that of the RMSF. The Gaussians are again shifted to their respective locations ( $\phi_{\text{peak}}$ ), and since this happens in the complex domain, multiplied by a phase factor (i.e., the complex part of the clean component). The restored Gaussians are added to the residual from step 4. If there are multiple RM components within the beam it is however not a good idea to reconvolve the spectra with the RMSF if one wants to investigate the depolarization properties. This is related to the fact that the clean components are complex numbers and can interfere with each other (Farnsworth et al. 2011).
6. The algorithm then continues with the next spatial pixel.

The above described RM-synthesis technique works better than linear fitting techniques (e.g., Ruzmaikin & Sokoloff 1979; Dolag et al. 2005; Vogt et al. 2005), which break down in low signal to noise regimes and do not apply to more complex situations when Eq. 9.6 is not valid.

The RM-synthesis technique (i.e., Eq. 9.9) and RM-CLEAN algorithm were implemented in IDL.

### 9.6.2.1 Application to the L-band WSRT data

We performed RM-synthesis on the WSRT 25, 21 and 18 cm data using cubes of Stokes Q and U images with a resolution of  $40'' \times 28''$ , see also Sect. 9.2.2. These data give a sensitivity to polarized emission up to a maximum Faraday depth of  $|\phi_{\max}| \approx \sqrt{3}/\delta\lambda^2 \approx 8.8 \times 10^4 \text{ rad m}^{-2}$  (Brentjens & de Bruyn 2005). The three bands provide a resolution of  $\delta\phi \approx 2\sqrt{3}/\Delta\lambda^2 = 88 \text{ rad m}^{-2}$ , with  $\Delta\lambda^2 = \lambda_{\max}^2 - \lambda_{\min}^2$  the total bandwidth in wavelength squared. The maximum scale in  $\phi$  space to which the sensitivity has dropped to 50% is approximately  $\pi/\lambda_{\min}^2 = 111 \text{ rad m}^{-2}$ . The RMSF is shown in Fig 9.17 (left panel). Since the first sidelobe of the RMSF is about 65% of the main lobe, we used the RM-CLEAN algorithm, cleaning down to a threshold of  $0.12 \text{ mJy beam}^{-1} \text{ RMSF}^{-1}$ . The distribution of the peak of  $|\tilde{F}(\phi)|$ , the so-called “rotation measure map” (or Faraday depth map), is shown in Fig. 9.17 (right panel).

We extracted the location of the peak in the Faraday depth ( $\phi_{\text{peak}}$ ) for all compact sources within  $0.5^\circ$  radius of the cluster. In total for 17 sources we find an outlier-resistant mean of  $+11.7 \pm 3.0 \text{ rad m}^{-2}$ , clipping values more than two standard deviations away from the median, with the uncertainty the standard deviation of the mean of the  $\phi_{\text{peak}}$  distribution. This is in agreement with the value of  $11 \text{ rad m}^{-2}$  from Taylor et al. (2009) derived from NVSS data measured over scales of  $8^\circ$ . The  $|\tilde{F}(\phi)|$  spectra for seven compact sources are displayed in Fig. 9.18 (left panel).

For the relic,  $\phi_{\text{peak}}$  values vary spatially from about  $-53$  to  $+55 \text{ rad m}^{-2}$ . For B3,  $\phi_{\text{peak}}$  is about  $10 \text{ rad m}^{-2}$ , similar to the compact sources in the field. For B2, we find a strong gradient from  $-10$  to  $+55 \text{ rad m}^{-2}$  from east to west. For B1,  $\phi_{\text{peak}}$  varies between  $-10$  and  $-53 \text{ rad m}^{-2}$ . The “clean component” spectra are clearly resolved, see Fig. 9.18 (right panel).

Interestingly, the  $\phi_{\text{peak}}$  values for B1 and B2 deviate from the average galactic foreground of  $+11.7 \pm 3.0 \text{ rad m}^{-2}$ , indicating that some of the Faraday rotation is probably caused by the ICM. The  $\phi_{\text{peak}}$  value for B3 indicates it is located in the cluster outskirts and the line of sight towards it does not pass deep into the ICM. B2 and B1 seem to be located progressively deeper into the ICM of the cluster (or more behind it) given the larger  $\phi_{\text{peak}}$  deviation from the galactic foreground. Although the number of counts is low in the ROSAT image (Fig. 9.3), it is indeed expected that  $\int_{\text{source}}^{\text{telescope}} n_e dr$  increases from B3, B2, to B1.

### 9.6.3 The depolarization properties of the radio relic

Our observations show a significant decrease in the polarization fraction towards lower frequencies. There are several factors that can cause such an effect. We rule out the effect of bandwidth depolarization, as the frequency resolution of the observations is sufficient to detect polarized emission with a Faraday depth  $> 10^4 \text{ rad m}^{-2}$  using RM-synthesis. A second possibility is beam depolarization due to multiple RM components within the beam (spatially varying). These different RM components can be caused by variations of the magnetic field and/or electron density. The spatially averaged polarization fraction over B1 and B2 is about 13% at 4.9 GHz, 1.6% at 1714 MHz and  $< 1\%$  at 1382 and 1221 MHz. We excluded B3 from the analysis because the SNR is too low at 4.9 GHz due to the primary beam attenuation.

Two types of depolarization, *internal* and *external*, have been identified (Burn 1966; Tribble 1991). Internal depolarization takes place within the radio source itself, while external depolarization takes place in a medium between the source and the observer, e.g., the ICM or magnetized plasma from our own galaxy. A simple case of internal depolarization is for a uniform

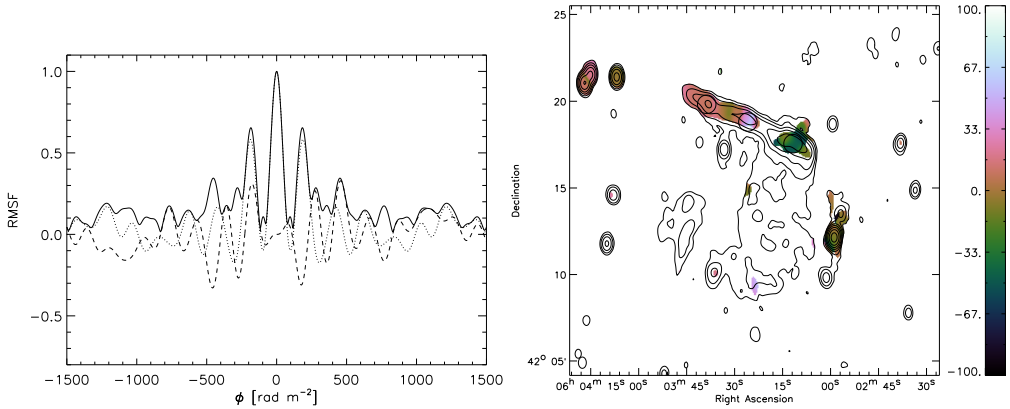


Figure 9.17: Left: RMSF from the 25, 21, 18 cm bands WSRT data. The solid line is the overall amplitude of the complex RMSF. Dotted line depicts the Real part of the RMSF and the dashed line the Imaginary part. The FWHM of the RMSF is  $88 \text{ rad m}^{-2}$ . Right: Faraday depth value of the peak in  $F(\phi)$ . Contours are from the WSRT 1382 MHz image and drawn at levels of  $[1, 3, 9, 27, \dots] \times 0.225 \text{ mJy beam}^{-1}$ .

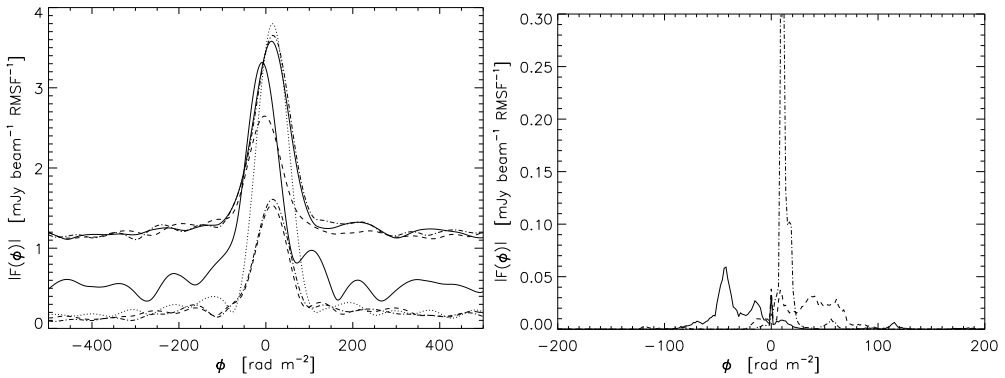


Figure 9.18: Left: Gaussian restored  $|F(\phi)|$  spectra of compact sources. B3 0559+422A solid line, NVSS J060231+422811 (west component) dashed line, NVSS J060231+422811 (east component) dash-dotted line, and NVSS J060206+422045 dotted line, NVSS J060406+422125 dashed line ( $1 \text{ mJy beam}^{-1} \text{ RMSF}^{-1}$  offset), NVSS J060416+422110 (south component) solid line (offset), NVSS J060416+422110 (north component) dashed-dotted line (offset). The high “residuals” for B3 0559+422A are an artifact due to remaining calibration errors. Right:  $|F(\phi)|$  spectra, consisting of clean components, extracted at three different positions from relic B. The positions are indicated by the circles drawn in Fig. 9.17 (right panel). Dash-dotted line: position B3, dashed line: position B2, and solid line: position B1 (see also Fig. 9.3).

magnetic field and electron density within the source. In this slab model (Burn 1966), the fractional polarization as function of  $\lambda^2$  is given by a sinc-function. From this, the extent in Faraday depth of the source can be estimated. Observations indicate that the uniform slab model does not fit the data for the radio relics in A2256 and the Coma cluster (Brentjens 2008; Pizzo 2010).

For B1 and B2 there is a clear trend of depolarization towards higher  $\lambda^2$ . The only way to get depolarization as a function of wavelength is to have multiple RM components within the beam, either across it or along it – external –, or mixed with the synchrotron emitting plasma – internal. Therefore, the Faraday spectrum must be resolved wherever there is depolarization. In practice, because of the finite width of the RMSF, it may not always be possible to see these multiple RM components, even though they are depolarizing. In the case of B1 and B2, the spectra are indeed clearly resolved, consistent with the high amount of depolarization found for these regions. It cannot be directly determined whether this is due to beam depolarization (spatially varying RM components) or due to multiple RM components along the line of sight. In the first case, the depolarization should vanish when going to high enough spatial resolution. The fact that the RM varies spatially from beam to beam across B1 and B2 makes it very likely that at least a significant part of the depolarization is indeed caused beam depolarization.

The trend from east to west over the relic of (i) a larger  $\phi_{\text{peak}}$  deviation from the galactic foreground, and (ii) an increasing depolarization towards higher  $\lambda^2$ , suggest that most of the depolarization is probably due to the ICM of the cluster itself and not due to internal depolarization.

## 9.7 Discussion

The complex diffuse radio emission and extended X-ray emission give strong support for the fact that the cluster is currently undergoing a merger event. There are however a few puzzling aspects to the diffuse emission in this cluster. The linear extension of relic B to the east is quite peculiar. Usually shock surfaces are curved and not very linear over distances of more than a Mpc (e.g., Hoeft et al. 2008; Battaglia et al. 2009; Vazza et al. 2009; Skillman et al. 2011). The ongoing merger event for 1RXS J0603.3+4214 is probably more complex than the “simple” binary merger events that are thought to give rise to symmetric double radio relics (e.g., Roettiger et al. 1999a; van Weeren et al. 2011a). Deep X-ray observations will be needed to investigate whether the relic is indeed associated with such a linear shock front.

Relic E could also trace a shock wave with DSA, given its large extent and relatively flat integrated spectral index. The nature of relic D remains unclear, its small size and morphology would suggest a radio phoenix scenario, but the integrated spectral index of  $-1.10 \pm 0.05$  is not consistent with this interpretation. Higher-resolution observations ( $\sim 1''$ ) would be helpful to better delineate the morphology.

An interesting point is the relation between relic B and the radio halo C. The radio halo is located directly south of B1, the brightest part of relic B. The halo and relic are connected by a region with  $\alpha \lesssim -2$ , but then the spectral index flattens to  $\alpha \sim -1.2$  and increases a bit towards the center of the halo. We speculate that relativistic particles, previously accelerated at the shock front, are re-accelerated due to merger induced turbulence and then form the radio halo. Another interesting feature of the halo is the increased surface brightness at its southern end. Why does the surface brightness increase here? For a binary cluster merger event one expects two shock waves to form traveling diametrically outwards (e.g., Roettiger et al. 1999a).

If relic B traces the main shock wave one could also expect a second shock waves at the south side of the cluster center. This could be the region of increased surface brightness at the southern end of C. Although, this remains somewhat speculative, also because the merger event seems to be complex given the peculiar linear extension of relic B. X-ray observations could reveal whether the south part of radio halo C is associated with a shocked region with a higher ICM temperature.

There is also a possibility that source C is not a radio halo, but another relic seen close to face-on, because the surface brightness does not clearly peak at the location of the ROSAT X-ray peak. However, the radio power of source C is in agreement with the  $L_X-P_{1.4\text{GHz}}$  correlation. Also, the brightness distribution over C is regular and quite smooth, which argues against a relic interpretation. Relics are often composed of smaller filamentary structures (e.g., Clarke & Ensslin 2006). We note that source C is somewhat similar to the diffuse emission seen between the relics in CIZA J2242.8+5301 (van Weeren et al. 2010).

### 9.7.1 Relic spectra

The analysis of the radio spectra for radio relic B are consistent with the existence a two global spectral shapes, one that describes the spectrum for the east part and one for the west part. This because it is possible to line up all radio spectra onto a single shape with shifts along  $\log(I)$  and  $\log(\nu)$ .

The spectral shapes of the west (B1) and east (B2+B3) regions only differ in regions in the spectral index map with  $\alpha \lesssim -1.4$  (e.g., see Fig. 9.13). At the front part of the relic we find power-law radio spectra, consistent with an injection spectral index of  $-0.6$  to  $-0.7$ . The injection spectral index is also consistent with the total integrated spectral index of  $-1.1$ , i.e., the integrated spectral index should be  $-0.5$  units steeper than the injection spectral index (e.g., Miniati 2002; Bagchi et al. 2002) for a simple shock model (with the properties of the shock not changing over time). We also find that the shape of the radio spectra are mostly governed by the effects of spectral ageing, by looking at the shifts made to align up all individual spectra to the global spectral shape (see Sect. 9.5.4.1). Changes in the magnetic field, total electron content, or electron energy (except energy changes due to ageing) do not seem to play a major role.

The observed radio spectra are not consistent with a JP model (which consists of a single burst of injection and spectral ageing). Instead, we find that the KGJP model, which consist of a sum of individual JP spectra with different amounts of ageing, provides a good match to the spectrum of the east part of the relic. This can be thought of as mixing of emission, most likely because of projection effects. For the west part of the relic (in the regions with the steepest spectral index), we find deviations from the KGJP model. We speculate that additional mixing of emission takes place here, or the spectra are contaminated by the emission from radio halo C (although we attempted to subtract this emission).

The KGJP spectra indicate that (1) at the front of the relic we see freshly injected radio plasma, giving a power-law spectrum. Little mixing of emission takes place here. (2) For the middle part of the relic (the region  $-0.9 \lesssim \alpha \lesssim -1.1$  from the spectral index map), we observe a mix of radio aged radio plasma and freshly injected radio plasma. For the back part of the relic (the region with  $\alpha \lesssim -1.1$ ), we see a mix of aged radio plasma, but no freshly injected plasma.

Mixing of emission thus seems to be an important factor determining the spectral shape. This suppresses spectral curvature and pushes back the radio spectra to power-law shapes. It is therefore crucial that this effect is considered. The lack of spectral curvature does therefore not

directly imply spectral ageing is not important.

An injection spectral index of  $-0.6$  in combination with DSA, implicates a Mach number of 4.5, surprisingly high. These Mach numbers are rarely seen in simulations of cluster mergers. Instead of DSA, another possibility is shock re-acceleration of fossil electrons. In practice, these radio spectra will probably be indistinguishable from DSA (Markevitch et al. 2005).

### 9.7.2 Alternative models to explain the relativistic electrons from the radio relic

An alternative explanation for radio relics, based on a secondary cosmic ray electron model, has been proposed by Keshet (2010). This model predicts a spectral index of  $-1$  at the front of the relic. We do not observe this, although there is a hint of a steeper spectral index at the front of B1 at some places in the 325–610 MHz spectral index map. However, this could be an artifact, as edge pixels in the spectral index map are not reliable. Also these steeper regions are smaller than the beam size. We do not find indications of magnetic field changes across the relic from the shifts needed to align up the spectra from individual regions. On the other hand, in the images we see a morphological connection between the radio relic and halo, these halo-relic “bridges” are included in the model from Keshet (2010).

Enßlin & Gopal-Krishna (2001) and Enßlin & Brüggen (2002) proposed that (some) radio relics could be the result of adiabatically compressed fossil radio plasma due to a shock wave. This could boost the radio luminosity by about two orders of magnitude. The question is whether the large relic in 1RXS J0603.3+4214 can be explained in this way. The model of Enßlin & Gopal-Krishna (2001) consist of five phases: (1) injection by a radio galaxy, (2) expansion of the radio cocoon, during this phase the cocoon becomes undetectable, (3) the “lurking”-phase, when pressure equilibrium is reached and the volume of the cocoon remains constant. Due to significant adiabatic losses most of the electrons reside at low energies which reduces the radiation losses. The losses can be further reduced by a low-magnetic field. (4) Adiabatic compression of the cocoon, the radio emission is boosted so it becomes visible again and the break frequency moves upwards. (5) The radio emission fades away due to synchrotron and IC losses.

In the case of 1RXS J0603.3+4214, the fossil plasma should be quite old ( $\gtrsim 1$  Gyr) as it takes a considerable amount of time for a radio galaxy to move over a distance of 2 Mpc and dump the radio plasma. The change in the break frequency from the adiabatic compression is (Giacintucci et al. 2008)

$$\frac{\nu_{\text{brk}}^{\text{after}}}{\nu_{\text{brk}}^{\text{before}}} \approx \frac{5\mathcal{M}^2 - 1}{4}. \quad (9.14)$$

Adopting a reasonable value of  $\nu_{\text{brk}}^{\text{before}} = 50$  MHz for 1 Gyr old fossil radio plasma (e.g., Enßlin & Gopal-Krishna 2001), we would need a  $\mathcal{M} > 8$  shock to push  $\nu_{\text{brk}}^{\text{after}}$  above 4 GHz. For more realistic Mach numbers of  $\mathcal{M} \lesssim 4$  we should thus observe steep and curved radio spectra. This contradicts the flat spectral indices of  $\alpha = -0.6$  we find and the straight power-law integrated radio spectrum.

Only in the unlikely scenario that the plasma is about 0.1 Gyr old, before it is compressed by the shock, the break frequency could be pushed up to a few GHz. We also note that to produce a spectral index gradient a high mass load is required, which would allow the shock wave to successively compress the radio plasma. In the case of a high mass load due to undetectable



cool gas, a shock forms and the adiabatic gains are restricted due to the limited compression factor of such a shock wave (Enßlin & Gopal-Krishna 2001).

### 9.7.3 Magnetic field

The RM for the west part of the main relic (B1) deviates from the foreground RM, determined from compact sources in the field around the cluster. This suggests that the west part of the relic is located deeper into the ICM, also consistent with the higher amount of depolarization found for that part of the relic. A constant magnetic field of  $1 \mu\text{Gauss}$ ,  $n_e = 1 \times 10^{-4} \text{ cm}^{-3}$  and a path length 500 kpc, will give a Faraday depth of about  $40 \text{ rad m}^{-2}$ . The observed difference of about  $60 \text{ rad m}^{-2}$ , compared to the galactic foreground value, suggests a relatively high magnetic field ( $B \gtrsim 1 \mu\text{Gauss}$ ). Also because the magnetic field topology is likely more complex, i.e., the magnetic field could have reversals along the line of sight.

We estimate the magnetic field at the front of relic B1 by assuming minimum energy densities in the relics (e.g., Govoni & Feretti 2004) and using the same procedure as described in van Weeren et al. (2009b). We take  $k = 100$ , i.e., the ratio of energy in relativistic protons to that in electrons, 250 kpc for the depth ( $d$ ) along the line of sight, a spectral index of  $-0.6$ , and a surface brightness of  $0.205 \text{ mJy arcsec}^{-2}$  at 610 MHz. We use low and high energy cutoffs ( $\gamma_{\min}$  and  $\gamma_{\max}$ , with  $\gamma_{\min} \ll \gamma_{\max}$ ) instead of low and high frequency cutoffs (Beck & Krause 2005; Brunetti et al. 1997), giving the so-called “revised” equipartition magnetic strength ( $B'_{\text{eq}}$ ). For  $\gamma_{\min} = 100$  this gives  $B'_{\text{eq}} = 9.2 \mu\text{Gauss}$ . If we take  $\gamma_{\min} = 5000$  we get  $B'_{\text{eq}} = 7.4 \mu\text{Gauss}$ . The revised equipartition magnetic field strength scales with  $(1 + k)^{1/(3-\alpha)}$ .

The polarization and equipartition results indicate a relatively high magnetic field strength. These relatively high values have also been found for other relics by Finoguenov et al. (2010); van Weeren et al. (2010) using limits on the IC X-ray emission or modeling the relic’s brightness profile.

## 9.8 Conclusions

We presented detailed GMRT and WSRT radio observations of a newly discovered cluster of galaxies at  $z = 0.225$ . We find the cluster to host three radio relics and also a giant  $\sim 2 \text{ Mpc}$  radio halo. The radio power follows the  $L_X - P_{1.4\text{GHz}}$  correlation for giant radio halos. The extended X-ray emission and complex diffuse radio emission indicate we are witnessing an ongoing cluster merger event.

The WSRT observations reveal that the front of the relic is highly polarized, with a polarization fraction of up to  $\sim 60\%$  at 4.9 GHz. At lower frequencies (in the L-band), the polarization fraction drops considerably, as has been seen for other well studied relics, e.g., in A2256 (Brentjens 2008) and A2255 (Pizzo et al. 2011). The observed depolarization and Faraday depth suggest that the west part of the main relic is located deeper into the ICM of the cluster. Using equipartition argument we find a high magnetic field strength of about  $7\text{--}9 \mu\text{Gauss}$  for the bright relic.

For the radio halo we find a spectral index of  $\alpha = -1.15 \pm 0.06$ . The spectrum for the bright radio relic is a power-law between 74 MHz and 4.9 GHz with  $\alpha = -1.10 \pm 0.02$ . If this relic traces a shock, where particles are accelerated by the DSA mechanism, then the injection spectral index of  $-0.6$  would imply a Mach number of 4.5. The spectral index steepens systematically across

the width of the relic from about  $-0.6$  to  $\sim -2$ . For the bright western part of the relic we can trace the spectral steepening to  $\alpha < -2.5$ . The radio spectrum at the front of the relic has a power-law shape with  $\alpha = -0.6$  to  $-0.7$ , while the amounts of spectral curvature increases gradually towards the back of the relic.

We analyzed the radio spectra making use of color-color and shift diagrams (Katz-Stone et al. 1993; Katz-Stone & Rudnick 1994) and divided the relic into an eastern and western part. Both parts were further divided into smaller regions based on the spectral index map in Fig. 9.9 (left panel). We found that the individual radio spectra in each region could all be lined up. This implies the existence of a single global electron energy distribution. The shifts needed to align up the individual spectra, indicate that spectral ageing is the dominant factor explaining the changes in the spectra from one region to another. Changes in the magnetic field, total number of electrons, or adiabatic expansion/compression do not seem to be important.

In addition, we find evidence for mixing of radio emission with different amounts of spectral ageing within the beam. The amount of mixing increases away from the front of the relic. A so-called KGJP model (see Sect. 9.5.1), which can be thought of as a mix of spectra with different ages, describes the global spectral shape for the east part of the relic. For the west part of the relic, in particular the region with the steepest spectral index, we find a small deviation from this shape, possibly because the amount of mixing increases here.

The effects of spectral curvature are suppressed by mixing and this pushes the radio spectra closer towards power-law shapes. This means that if a spectral index gradient is seen, but no spectral curvature (or only very little), this does not necessarily imply that the spectral index gradient is not related to spectral ageing.

We conclude that the color-color and shift diagrams provide a powerful tool to constrain physical conditions that shape the radio spectra. In the future we plan (i) to expand the color-color analyses to smaller regions, by obtaining higher resolution maps, (ii) increase the frequency range to  $< 150$  MHz or  $> 3$  GHz, and (iii) apply the technique to other radio relics and halos.

For the origin of the relativistic electrons (in the bright relic), the results favor a scenario where particles are accelerated or re-accelerated in a shock. Surprising and somewhat puzzling is the high Mach number of 4.5, shocks with these Mach numbers in cluster are rare. A crucial test would be the to measure the Mach number directly from the jump conditions and compare this with  $\alpha_{inj}$ . Deep X-ray observations of this cluster will also be needed to constrain the merger scenario and determine the dynamical state of the cluster.

*Acknowledgements.* We thank the staff of the GMRT who have made these observations possible. The GMRT is run by the National Centre for Radio Astrophysics of the Tata Institute of Fundamental Research. The Westerbork Synthesis Radio Telescope is operated by ASTRON (Netherlands Institute for Radio Astronomy) with support from the Netherlands Foundation for Scientific Research (NWO). The National Radio Astronomy Observatory is a facility of the National Science Foundation operated under cooperative agreement by Associated Universities, Inc. The William Herschel Telescope are operated on the island of La Palma by the Isaac Newton Group in the Spanish Observatorio del Roque de los Muchachos of the Instituto de Astrofísica de Canarias.

This publication makes use of data products from the Two Micron All Sky Survey, which is a joint project of the University of Massachusetts and the Infrared Processing and Analysis Center/California Institute of Technology, funded by the National Aeronautics and Space Administration and the National Science Foundation.

RJvW acknowledges funding from the Royal Netherlands Academy of Arts and Sciences. MB and MH acknowledges support by the research group FOR 1254 funded by the Deutsche Forschungsgemeinschaft.

LR acknowledges support from the U.S. National Science Foundation, under grant AST0908668 to the University of Minnesota. RJvW would like to thank C. Pfrommer for discussions and G. Heald for his explanation of the RM-CLEAN algorithm.