



Universiteit
Leiden

The Netherlands

Radio emission from merging galaxy clusters : characterizing shocks, magnetic fields and particle acceleration

Weeren, R.J. van

Citation

Weeren, R. J. van. (2011, December 20). *Radio emission from merging galaxy clusters : characterizing shocks, magnetic fields and particle acceleration.*

Retrieved from <https://hdl.handle.net/1887/18259>

Version: Corrected Publisher's Version

License: [Licence agreement concerning inclusion of doctoral thesis in the Institutional Repository of the University of Leiden](#)

Downloaded from: <https://hdl.handle.net/1887/18259>

Note: To cite this publication please use the final published version (if applicable).

A search for steep spectrum radio relics and halos with the GMRT

Abstract. Diffuse radio emission, in the form of radio halos and relics, traces regions in clusters with shocks or turbulence, probably produced by cluster mergers. The shocks and turbulence are important for the total energetics and detailed temperature distribution within the intracluster medium (ICM). Only a small fraction of clusters exhibit diffuse radio emission, whereas a large majority of well-studied clusters shows clear substructure in the ICM. Some models of diffuse radio emission in clusters indicate that virtually all clusters should contain diffuse radio sources with a steep spectrum. External accretion shocks associated with filamentary structures of galaxies could also accelerate electrons to relativistic energies and hence produce diffuse synchrotron emitting regions. The detection of radio emission from such filaments is important for our understanding of the origin of the Warm-Hot Intergalactic Medium (WHIM), and relativistic electrons and magnetic fields in the cosmic web. Here we report on Giant Metrewave Radio Telescope (GMRT) observations of a sample of steep spectrum sources from the 74 MHz VLSS survey. These sources are diffuse on scales $\gtrsim 15''$, and not clearly associated with nearby ($z \lesssim 0.1$) galaxies. The main aim of the observations is to search for diffuse radio emission associated with galaxy clusters or the cosmic web. We have carried out GMRT 610 MHz continuum observations of unidentified diffuse steep spectrum sources. We have constructed a sample of diffuse steep spectrum sources, selected from the 74 MHz VLSS survey. We identified eight diffuse radio sources probably all located in clusters. We found five radio relics, one cluster with a giant radio halo and a radio relic, and one radio mini-halo. The giant radio halo has the highest radio power ($P_{1.4}$) known to date. By complementing our observations with measurements from the literature we find correlations between the physical size of relics and the spectral index, in the sense that smaller relics have steeper spectra. Furthermore, larger relics are mostly located in the outskirts of clusters while smaller relics are located closer to the cluster center.

R. J. van Weeren, H. J. A. Röttgering, M. Brüggen, and A. Cohen
Astronomy & Astrophysics, **508**, 75, 2009

2.1 Introduction

Studies of large-scale structure (LSS) formation have made significant advances during the last decade. It has been found that nearly all massive clusters have undergone at least several mergers in their history and that presently clusters are still in the process of accreting matter. A significant fraction of the accreting mass is in the form of (smaller) clusters and galaxy groups. Cluster mergers are the most energetic events in the present day Universe, with kinetic energies of the order of $10^{63} - 10^{64}$ erg, which are dissipated in giant shock waves and turbulence. An important aspect is the total energy budget and the detailed temperature distribution within the ICM, both of them are affected by the merger history of a cluster (e.g., Dolag et al. 2008).

Diffuse steep spectrum radio emission is observed in about 50 massive merging and post-merging galaxy clusters (see the review by Ferrari et al. 2008, and references therein). This diffuse emission is difficult to detect due to its low surface brightness and steep spectral index¹, so the fraction of clusters hosting diffuse radio emission is probably larger than we currently know. The diffuse emission in clusters is commonly divided into three main classes (Feretti & Giovannini 1996). *Radio Halos* are extended ($\gtrsim 1$ Mpc) diffuse unpolarized ($\lesssim 5\%$) sources, located in the center of clusters. They have a regular smooth appearance, and follow the thermal X-ray emission. *Radio Relics* are elongated structures with an irregular morphology, mostly located in the periphery of clusters. Relics can be highly polarized (10 – 50%). Several different subclasses have been identified (Kempner et al. 2004). Most known radio relics and halos are found in clusters which show signs of a current or recent merger. This supports the scenario in which the relativistic electrons are accelerated by merger-induced shocks or turbulence. However, *Radio Mini-halos* are not associated with merging clusters. They are found in the centers of cool core clusters (e.g., Fabian et al. 1991; Peterson & Fabian 2006) and are associated with the central cluster galaxy and typically have sizes $\lesssim 500$ kpc, with the diffuse emission surrounding the central cluster galaxy (e.g., Govoni et al. 2009).

Two different mechanisms for in-situ acceleration of particles have been proposed to explain relics in clusters: (i) adiabatic compression of fossil radio plasma by a passing shock wave producing a so called radio “phoenix” (Enßlin & Gopal-Krishna 2001; Enßlin & Brüggen 2002), or (ii) diffusive shock acceleration (DSA) by the Fermi-I process (e.g., Drury 1983; Blandford & Eichler 1987; Jones & Ellison 1991; Ensslin et al. 1998; Malkov & O’C Drury 2001). In the first scenario, radio relics should have toroidal and complex filamentary morphologies. These relics are capable of producing very steep, curved radio spectra due to inverse Compton (IC) and synchrotron losses. In the DSA scenario the electrons are accelerated by multiple crossings of the shock front (in a first order Fermi process). These relics have large sizes (Mpc) and are direct tracers of shock fronts in clusters. The spectral index is determined by the balance between the continuous acceleration at the shock front and energy losses in the post-shock region.

The diffuse emission within clusters reveals the presence of relativistic electrons and magnetic fields on scales ~ 1 Mpc. Spectral aging, due to synchrotron and IC losses of the emitting electrons may explain the steep spectra. If the electrons are injected via Fermi acceleration (DSA), their energy follows a power-law distribution. The power-law index of the injected electrons is related to the Mach number of the shocks (e.g., Hoeft & Brüggen 2007): shocks with a low Mach number have steeper radio spectra. Clearly, low-frequency surveys are needed to locate and study these sources (Cassano et al. 2006, 2007, 2008). Interestingly, Brunetti et al. (2008) discovered a radio halo in the cluster Abell 521, which was previously known to host a

¹ $F_\nu \propto \nu^\alpha$, with α the spectral index

radio relic, with a spectral index of ~ -2.1 , suggesting the existence of a population of diffuse source in clusters with spectral indices < -1.5 .

Numerical simulations show the development of various types of shocks during structure formation (Miniati et al. 2000). These shocks differ in their location with respect to the cluster center and Mach numbers (Miniati et al. 2000; Miniati 2002; Ryu et al. 2003; Pfrommer et al. 2006; Vazza et al. 2009). External accretion shocks have $\mathcal{M} \gg 1$ and process the low-density, unshocked intergalactic medium (IGM). This results in relatively flat spectral indices of about -0.5 at the location of the shock front. Further away from the shock front the spectral index steepens due to synchrotron and IC losses. Internal shocks, (i.e., merger and flow shocks) occur within the cluster. The Mach numbers of these shocks are lower resulting in steeper spectral indices. Binary merger shocks are the result of a cluster merging with a another cluster or a large sub-structure. In this case a double radio relic is expected (e.g., Roettiger et al. 1999a; Hoeft et al. 2008; van Weeren et al. 2009b).

As pointed out by Cen & Ostriker (1999), hydrodynamic models indicate that up to half of the baryons at present time should have temperatures in the range of $10^5 - 10^7$ K. Unfortunately, studying the abundance and distribution of this WHIM is very challenging, since its main tracers are highly excited Oxygen lines which are difficult to observe (e.g., Nicastro et al. 2005). A fraction of the accretion shocks will be supersonic and can accelerate energetic electrons up to energies of $10^{18} - 10^{19}$ eV (e.g., Norman et al. 1995; Kang et al. 1996; Inoue et al. 2008). In the presence of magnetic fields, such electrons will emit faint diffuse synchrotron radiation. The detection of these radio filaments is very important as this would provide a probe of the WHIM. Recent magnetohydrodynamical modeling indicates that detecting radio emission from the filamentary cosmic web should be possible (e.g., Keshet et al. 2004; Hoeft & Brüggen 2007). Hoeft et al. (2008); Pfrommer (2008); Pfrommer et al. (2008) however find that in the outskirts of clusters (at a few times the virial radius) or filaments, external accretion shocks cause little radio emission, owing to the low density of both magnetic field energy and cosmic ray (CR) particles there (Miniati et al. 2001). They are therefore difficult to detect even with the sensitivity of upcoming radio telescopes such as LOFAR. Relic emission from internal accretion shocks occur in a higher density environment so that they should be detected with current radio facilities.

When searching for radio halos, relics and filaments in low-frequency radio surveys, various other steep spectrum sources are also present. These include ultra-steep (angular size $\lesssim 15''$) spectrum sources (USS, see Miley & De Breuck 2008, for a review) associated with high- z radio galaxies (HzRG), “fossil” or “dying” FR-I (Fanaroff & Riley 1974) radio sources, and “head-tail” sources, the last two having a steep spectrum due to spectral aging of the radio emission. In high-resolution ($\lesssim 5''$) observations, for example at 1.4 GHz with the Very Large Array (VLA), diffuse objects will be resolved out due to missing short baselines. This provides a method for selecting diffuse radio sources associated with galaxy clusters or the cosmic web. FR-I sources can be partly excluded by removing sources that are clearly associated with individual galaxies.

The 74 MHz VLA low-frequency Sky Survey (VLSS), Cohen et al. (2007), covers about 3π steradians of sky north of $\delta = -30^\circ$. The resolution of the survey is $80''$ (FWHM) and the rms noise level is about 0.1 Jy beam^{-1} . The source catalog contains roughly 70,000 sources with a point source detection limit of 0.7 Jy beam^{-1} . A new calibration algorithm (Cotton et al. 2004) was used to remove the ionospheric distortions, which can be severe at this low-frequency. The 1.4 GHz NRAO VLA Sky Survey (NVSS), Condon et al. (1998), covers the entire sky above $\delta = -40^\circ$. The NVSS images have a rms noise of about $0.45 \text{ mJy beam}^{-1}$, and a resolution of $45''$ (FWHM). The catalog contains about 2×10^6 sources above a flux of $\sim 2.5 \text{ mJy}$.

In this paper we present radio continuum observations of 26 diffuse (angular size $\gtrsim 15''$) steep spectrum sources selected from the VLSS survey with the GMRT at 610 MHz. The main aim of this project is to determine the morphology of the sources and search for diffuse structures which could be associated with shock fronts or turbulence in clusters, and accretion shocks onto filaments of galaxies.

The layout of this paper is as follows. In Sect. 2.2 we discuss the sample selection, this is followed by an overview of the observations and data reduction in Sect. 2.3. In Sect. 2.4 we present the radio maps of the most interesting sources and discuss these sources individually. By combining our radio observations with data from the literature (X-ray and optical observations) we have tried to classify the sources. In Sect. 2.5, spectral indices are modeled using our flux measurements combined with literature values. We end with a discussion and conclusions in Sects. 2.6 and 2.7.

Throughout this paper we assume a Λ CDM cosmology with $H_0 = 71 \text{ km s}^{-1} \text{ Mpc}^{-1}$, $\Omega_m = 0.3$, and $\Omega_\Lambda = 0.7$.

2.2 Sample selection

Spectral indices (between 1400 and 74 MHz) were calculated for all sources in the VLSS survey. We selected sources with $\alpha \leq -1.35$ which resulted in a total of 176 sources. This cutoff is somewhat arbitrary, but a significant lower cutoff resulted in a very small number of sources selected while a higher cutoff would select too many sources for follow-up observations. VLA B-array 1.4 GHz ~ 5 min snapshot observations were carried out on March 25–29 and May 10, 2005 of a subsample of 68 from the 176 sources. Two intermediate frequencies (IFs) with a bandwidth of 50 MHz each were used, centered at 1385 and 1465 MHz. From this 68 sources, 36 were found to be resolved out. This showed that these sources had extended emission on scales $\gtrsim 15''$. From the 36 sources 13 were identified with known nearby galaxies. The remaining 23 sources were included in the sample. We have also searched for additional sources with $\alpha \leq -1.15$, by making use of the 1.4 GHz FIRST survey (5'' FWHM, Becker et al. 1995). Sources with a FIRST flux at least 8 times lower than the 1.4 GHz NVSS flux were initially selected and visually inspected to remove obvious double lobe sources. The spectral index cutoff of -1.15 was chosen because higher values resulted in too many double lobes to be selected for visual inspection. Furthermore, most known radio halos and relics have spectral indices steeper than this value. The amount of flux resolved out in the selection criterium was a tradeoff as lower values also resulted in too many sources to be selected for visual inspection. After visual inspection we found three additional sources which showed the presence of diffuse emission. None of these sources were clearly associated with nearby individual galaxies in the POSS-II or SDSS surveys (Abazajian et al. 2009). The final list of sources and their coordinates are given in Table 2.1.

2.3 Observations & data reduction

High-sensitivity radio observations at 610 MHz were carried out with the GMRT in February and November 2008 of a sample of 26 diffuse steep spectrum radio sources. We divided a total 102 hours of observation time evenly between the 26 sources. A total of 32 MHz bandwidth was recorded, using both the upper (USB) and lower sidebands (LSB) which included both RR and

LL polarizations. The data were collected in spectral line mode with 128 channels per sideband (IF), resulting in a spectral resolution of 125 kHz per channel. To increase UV-coverage we cycled between various sources, typically spending 40 min on a sources before moving to the next source. However, due to scheduling constraints it was only possible to do this for about half of our sources. The observations resulted in a net on-source time of ~ 3 hours, after flagging certain time-ranges which were affected by radio frequency interference (RFI) or had other problems.

The data were reduced and analyzed with the NRAO Astronomical Image Processing System (AIPS) package. Bandpass calibration was carried out using the standard flux calibrators: 3C48, 3C147, and 3C286. Fluxes of 29.43 Jy (3C48), 38.26 Jy (3C147), and 21.07 Jy (3C286) at 610 MHz were assigned to these sources using the Perley & Taylor (1999) extension to the Baars et al. (1977) scale. A set of 6 channels free of RFI was taken to normalize the bandpass (channel 15 – 20) for each antenna. Strong RFI was removed automatically (with the AIPS task ‘FLGIT’). The data was then visually inspected for remaining low-level RFI using the AIPS tasks ‘SPFLG’ and ‘TVFLG’. After that an initial phase and amplitude calibration was carried out using the bandpass and secondary calibrators, where we also transferred the flux densities from the primary calibrators to the secondary calibrators. The found solutions were then transferred to the target sources. We have not chosen to average any channels in order to minimize the effects of bandwidth smearing and to aid further removal of RFI. The first and last few channels of the data were discarded as they were noisy.

For making images we used the polyhedron method (Perley 1989; Cornwell & Perley 1992) to minimize the effects of non-coplanar baselines. Both USB and LSB were simultaneously gridded, imaged and cleaned. We used a total of 199 facets to cover ~ 2 times the full primary beam. This made the removal of sidelobes from strong sources far away from the field center possible. After a first round of imaging, in some cases “ripples” were seen in the maps which were subsequently removed after identifying the corresponding baseline(s). Several rounds of phase self-calibration were carried out before doing a final amplitude and phase selfcalibration. Images were made using robust weighting (robust = 0.5, Briggs 1995) and corrected for the primary beam attenuation. Images were cleaned to 3 times the rms noise level to minimize clean bias effects.

The thermal noise in each map is expected² to be

$$\sigma_{\text{thermal}} = \frac{\sqrt{2}T_s}{G \sqrt{n(n-1)}N_{IF}\Delta\nu t_{\text{int}}}, \quad (2.1)$$

with $T_s = 92$ K the system temperature, $G = 0.32$ K Jy⁻¹ the antenna gain, $n \approx 28$ the number of working antennas, $N_{IF} = 2$ the number of sidebands used (both recording RR and LL polarizations), $\Delta\nu = 13.5$ MHz the bandwidth per sideband, and t_{int} the net integration time. The expected thermal noise for 3 hrs integration time is about 32 $\mu\text{Jy beam}^{-1}$, where we have taken into account that typically 20% of the data is flagged due to RFI. The noise levels in our maps range from 40 to 202 $\mu\text{Jy beam}^{-1}$. The noise levels dependent on the UV-coverage and the presence of strong confusing sources in the field of view limiting the dynamic range. The lowest noise level of 40 $\mu\text{Jy beam}^{-1}$ is quite close to the thermal noise level. The uncertainty in the calibration of the absolute flux-scale is between 5 – 10%, see Chandra et al. (2004).

²http://www.gmrt.ncra.tifr.res.in/gmrt_hpage/Users/doc/manual/UsersManual/node13.html

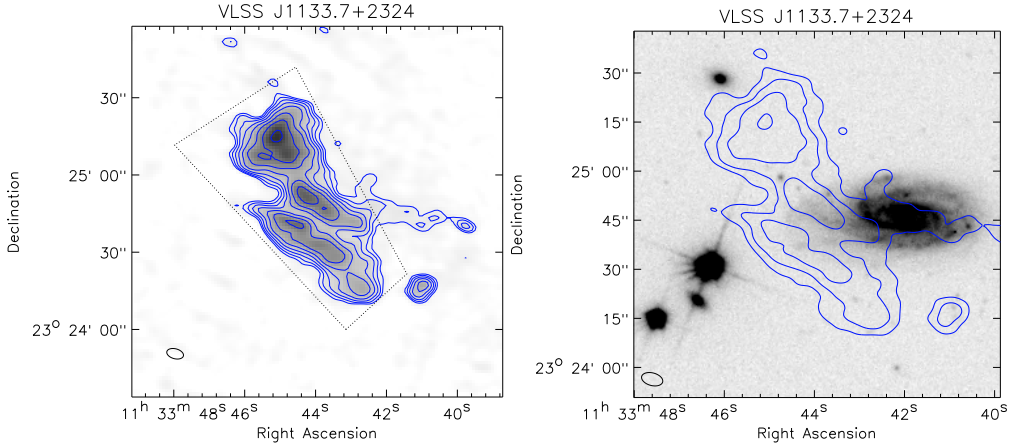


Figure 2.1: Left: GMRT 610 MHz radio map. The Gaussian beam size is shown at the bottom left corner. Contour levels are drawn at $\sqrt{[1, 2, 4, 6, 8, 16, 32, \dots]} \times 4\sigma_{\text{rms}}$, see Table 2.1. The dotted lines indicate the region where the 610 MHz flux (S_{610}), reported in Table 2.1, has been extracted. Right: SDSS r band image overlaid with GMRT 610 MHz contours. Contour levels are drawn at $\sqrt{[1, 8, 32, 128, 512, \dots]} \times 4\sigma_{\text{rms}}$.

2.4 Results

All sources, except VLSS J2229.1–0136, were detected in the GMRT images. The NVSS counterpart of VLSS J2229.1–0136 has a position offset of about $40''$, the flux density in the NVSS and VLSS surveys of these sources is also close to the detection threshold. We therefore conclude that VLSS J2229.1–0136 is most likely a noise peak as the GMRT observations should have easily detected the source. From here on we have left out VLSS J2229.1–0136 in the further discussions. A summary of the beam parameters and noise levels for the maps is given in Table 2.1. To identify optical counterparts overlays were made using SDSS and POSS-II images. Spectroscopic redshifts were included from the literature. For sources without a spectroscopic redshift, but having SDSS DR7 coverage we took the SDSS photometric redshift. For other sources we used that K and R magnitudes of massive elliptical galaxies correlate with redshift (K - z and R - z relations, e.g., Willott et al. 2003; de Vries et al. 2007).

We have also checked for any X-ray counterparts to the radio sources. In the next subsection we describe the most interesting sources that appear to be related to shocks or turbulence in clusters or filaments. The other sources are discussed in Appendix 2.8.

2.4.1 Individual sources

2.4.1.1 VLSS J1133.7+2324

The radio emission shows two parallel filamentary structures and a northern patch of diffuse emission connected with the western filamentary component. Some faint radio emission is extending towards the west. This extension coincides with the galaxy UGC 6544 (MCG+04-27-065; PGC 35694) located at $z=0.02385$ (Haynes et al. 1997). This galaxy was classified as a Sbc

Table 2.1: Source properties and results

Source Name	RA (J2000)	DEC (J2000)	Beam size arcsec	σ_{rms} μJy	$S_{610}^{j,k}$ mJy	$\alpha_{74\text{MHz}}^{1400\text{MHz}}$	LAS ^h arcsec	Redshift z
VLSS J0004.9–3457	00 04 53.63	–34 56 34.1	11.4×6.6	73	158 ± 16	-1.40 ± 0.04	116	0.29 ± 0.08^a
VLSS J0227.4–1642	02 27 26.74	–16 42 47.2	5.3×4.0	94	37.0 ± 6.2	-1.50 ± 0.06	89	≥ 0.7
VLSS J0250.5–1247	02 50 30.83	–12 47 30.3	9.4×3.7	118	33.2 ± 3.3	-1.94 ± 0.07	21	≥ 0.7
VLSS J0511.6+0254	05 11 37.79	+02 54 19.4	8.7×6.1	139	98.0 ± 10.3	-1.42 ± 0.05	45	0.20 ± 0.05^a
VLSS J0516.2+0103	05 16 17.89	+01 03 40.1	8.1×6.5	79	17.4 ± 4.4	-1.73 ± 0.06	35	≥ 0.7
VLSS J0646.8–0722	06 46 52.10	–07 22 37.9	5.7×4.8	63	120 ± 13	-1.70 ± 0.05	59	0.23 ± 0.06^a
VLSS J0717.5+3745 ⁱ	07 17 30.92	+37 45 29.7	8.2×6.0	78	501 ± 50	-1.15 ± 0.04	171	0.5548^f
VLSS J0915.7+2511 ⁱ	09 15 41.51	+25 11 48.2	8.6×5.9	134	194 ± 21	-1.52 ± 0.04	63	0.324^c
VLSS J1117.1+7003	11 17 06.46	+70 03 57.1	7.8×4.3	52	9.1 ± 0.9	-1.87 ± 0.07	18	≥ 0.7
VLSS J1133.7+2324	11 33 44.73	+23 24 50.6	6.6×3.9	51	80.6 ± 10.1	-1.69 ± 0.06	84	0.61 ± 0.16^d
VLSS J1431.8+1331	14 31 49.90	+13 31 54.1	5.3×4.8	51	120 ± 13	-2.03 ± 0.05	101	0.159936^c
VLSS J1515.1+0424 ⁱ	15 15 09.18	+04 24 41.1	7.6×5.4	79	192 ± 33	-1.50 ± 0.05	169	0.0972^g
VLSS J1636.5+3326	16 36 34.93	+33 26 33.9	5.2×4.7	40	16.1 ± 1.9	-1.84 ± 0.14	28	0.65 ± 0.19^d
VLSS J1710.5+6844	17 10 35.03	+68 44 58.4	8.9×4.7	63	23.3 ± 2.8	-1.75 ± 0.06	45	0.28 ± 0.08^a
VLSS J1930.4+1048	19 30 27.19	+10 48 02.5	5.3×4.8	56	67.4 ± 7.0	-1.90 ± 0.06	101	...
VLSS J2043.9–1118	20 43 58.46	–11 18 45.6	5.8×4.2	77	53.9 ± 6.3	-1.74 ± 0.05	41	0.43 ± 0.15^b
VLSS J2044.7+0447	20 44 43.64	+04 47 24.5	10.5×7.5	202	57.7 ± 5.8	-1.55 ± 0.06	71	0.46 ± 0.15^b
VLSS J2122.9+0012	21 22 54.14	+00 12 03.4	5.8×3.8	81	24.0 ± 2.4	-2.00 ± 0.08	12	≥ 1.4
VLSS J2209.5+1546	22 09 32.91	+15 46 29.9	6.9×6.2	64	36.4 ± 3.8	-1.56 ± 0.07	61	≥ 0.7
VLSS J2213.2+3411	22 13 12.45	+34 11 51.6	5.5×4.6	94	127 ± 13	-1.55 ± 0.04	62	$1.6 \pm 0.5^{a,e}$
VLSS J2217.5+5943	22 17 30.39	+59 43 05.3	6.3×4.3	47	79.9 ± 8.0	-2.20 ± 0.06	99	...
VLSS J2229.1–0136	22 29 11.95	–01 36 58.8	8.6×4.2	101
VLSS J2241.3–1626	22 41 22.57	–16 25 35.7	6.1×5.8	129	69.7 ± 7.3	-1.44 ± 0.06	47	≥ 0.7
VLSS J2341.1+1231	23 41 06.91	+12 31 36.9	5.5×4.4	50	117 ± 14	-1.70 ± 0.04	115	0.62 ± 0.15^b
VLSS J2345.2+2157	23 45 15.47	+21 57 55.1	4.8×4.2	63	79.3 ± 8.4	-2.14 ± 0.05	70	0.23 ± 0.06^a
VLSS J2357.0+0441	23 57 05.54	+04 41 14.7	7.8×4.9	82

^a redshift estimated using the fitted Hubble-K relation from Willott et al. (2003)

^b redshift estimated using the fitted Hubble-R relation from de Vries et al. (2007)

^c spectroscopic redshift from SDSS DR7

^d median photometric redshift from SDSS DR7

^e using the K_s band magnitude from De Breuck et al. (2002b)

^f Edge et al. (2003)

^g Struble & Rood (1999)

^h LAS = largest angular size

ⁱ resolved out in the 1.4 GHz FIRST survey

^j fluxes are extracted from the regions indicated in the figures by dotted lines.

^k for the compact sources (LAS < 45'') the fluxes were measured by fitting single Gaussians to the sources after convolving the maps to the 45'' NVSS resolution

spiral by Nilson (1973) and Paturel et al. (2003). The source is also listed in the IRAS Faint Source Catalog (F11311+2341) and detected at 60 and 100 μm (Moshir & et al. 1990). The galaxy has been included in 21 cm hydrogen emission line surveys. Springob et al. (2005) give a self-absorption corrected line flux of $2.97 \pm 0.32 \text{ Jy km s}^{-1}$ and a line-width of $372 \pm 3 \text{ km s}^{-1}$. The galaxy also has a small UV-excess (Miyachi-Isobe & Maehara 2002).

Using the IRAS fluxes we can estimate the star forming rate (SFR) in this galaxy (Solomon et al. 1997) by calculating the Far Infrared Luminosity (L_{FIR})

$$L_{\text{FIR}} = 3.94 \times 10^5 (2.58S_{60\mu\text{m}} + S_{100\mu\text{m}}) r(S_{60\mu\text{m}}/S_{100\mu\text{m}}) D_L^2, \quad (2.2)$$

with L_{FIR} in L_{\odot} , the flux S in Jy, D_L the luminosity distance in Mpc, and $r(S_{60}/S_{100})$ a color correction factor (Lonsdale & Helou 1985) which is of the order of one. This gives a SFR of $\sim 3M_{\odot}\text{yr}^{-1}$, using $\text{SFR} (M_{\odot}\text{yr}^{-1}) = L_{\text{FIR}}/(5.8 \times 10^9 L_{\odot})$, Kennicutt (1998). The radio flux of the galaxy is difficult to measure as part of the radio emission from the galaxy overlaps with the emission from the filamentary source. For the part which does not overlap with the steep spectrum source we measure a flux of about 6 mJy. We adopt a total flux for the galaxy of 10 mJy, assuming we missed about 40% of the previously reported flux. The luminosity at 1.49 GHz ($L_{1.49\text{GHz}}$) is $L = 4\pi D_L^2 S_{\nu} (1+z)^{-\alpha-1}$, with S_{ν} the observed flux at the rest frequency, and $\alpha \sim -0.5$. This results in $L_{1.49\text{GHz}} = 8.2 \times 10^{21} \text{ W Hz}^{-1}$. Using the FIR radio correlation (Condon et al. 1991) we find a luminosity of $\sim 10^{22} \text{ W Hz}^{-1}$, in good agreement.

The galaxy is unlikely to be associated with the filamentary radio structure to the east, given the above calculation, the steep spectral index, morphology, and spatial offset. In the background (partly behind the spiral galaxy) there is an overdensity of faint red galaxies. These have a median photometric redshift of about 0.6 (SDSS DR7) and follow roughly the filamentary radio source. This is probably a cluster or a galaxy filament, with the foreground galaxy hiding part of the cluster/filament. Based on the morphology, the radio source is then classified as a relic. If the steep spectrum radio source is located at a distance of $z = 0.6$, the LAS of $84''$ corresponds to a physical size of of 660 kpc.

2.4.1.2 VLSS J1431.8+1331

The radio emission shows two distinct components, the brightest one located to the east. This source has an optical counterpart, the cD galaxy of the cluster MaxBCG J217.95869+13.53470 (Koester et al. 2007). The cluster is also detected in X-rays by ROSAT (Voges et al. 1999, 2000) as source 1RXS J143150.6+133256. A SDSS DR7 spectrum puts the cD galaxy at a distance of $z = 0.160$. Three other sources in the cluster have a measured redshifts of 0.15962, 0.159153, and 0.164794. At this redshift the radio emission corresponds to a physical size of 170 kpc for the eastern and 125 kpc for the western component. The eastern component is an irregular curved structure with several bright knots. One of these corresponds with the nucleus of the cD galaxy. The morphology suggests that we are either seeing the interaction of radio plasma from the central AGN with the surrounding ICM or a small central radio source with a bright relic tracing a shock front (seen in projection).

The western fainter component does not seem to be associated with any galaxy. The source could either be remnant radio emission from a previous AGN episode or the signature of a shock wave. In the former case, the spectral index should be steeper than eastern component because of spectral aging.

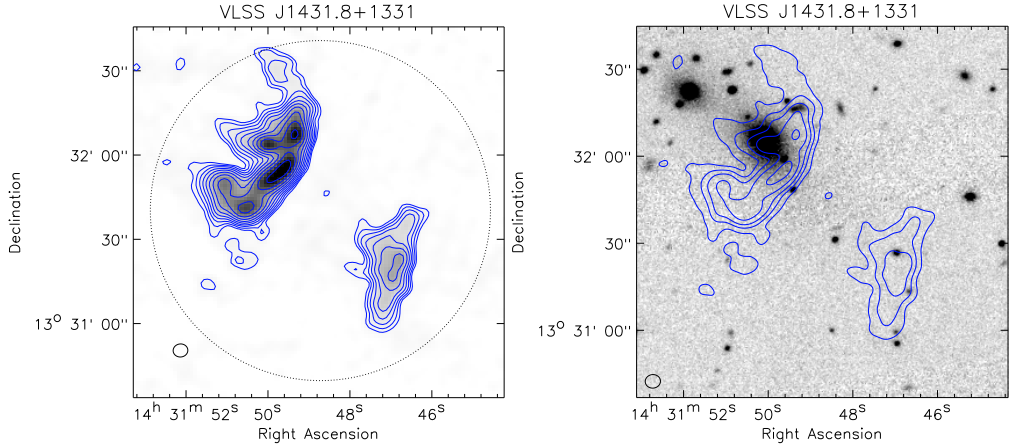


Figure 2.2: Left: GMRT 610 MHz radio map. Contour levels are drawn as in Fig. 2.1 (left panel). Right: SDSS r band image overlaid with GMRT 610 MHz contours. Contour levels are drawn as in Fig. 2.1 (right panel).

2.4.1.3 VLSS J2217.5+5943, 24P73

This source was found to have an ultra-steep spectrum ($\alpha = -2.58 \pm 0.14$) by the Synthesis Telescope of the Dominion Radio Observatory (DRAO) Galactic plane survey at 408 MHz and 1.42 GHz (Higgs 1989; Joncas & Higgs 1990). Since this source was located in the galactic plane, Joncas & Higgs (1990) suggested the sources might be a pulsar. However, they noted that the source seemed to be slightly extended at 408 MHz. At 1.42 GHz the source was resolved into two distinct components. Both of these components were also listed as a single source 25P23. The source was also detected in the 38 MHz 8C survey (Rees 1990; Hales et al. 1995). Subsequent L-band (1.4 GHz) and X-band (8.4 GHz) observations with the VLA by Green & Joncas (1994), separated the source clearly into two components. A compact northern component and a southern diffuse component. The X-band observations only detected the northern component. By comparing the fluxes of the VLA and DRAO observations they concluded that the southern diffuse component had an ultra-steep spectrum and provided the bulk of the emission at low frequencies. Since the source was resolved this ruled out a pulsar identification. In fact it was suggested that this source might be a radio halo or relic located in a galaxy cluster behind the galactic plane.

GMRT observations of 24P73 show a complex filamentary source. The source has some similarities with the relic sources in Abell 85 and Abell 133 (Slee et al. 2001). POSS-II and 2MASS images covering the area do not show the presence of any cluster. However this is not unexpected given the extinction of $A_B = 6.7$ (Schlegel et al. 1998). Given the steep spectral index and morphology we conclude that the sources is a radio relic. Deep NIR imaging will be necessary to identify the galaxy cluster associated with the relic.

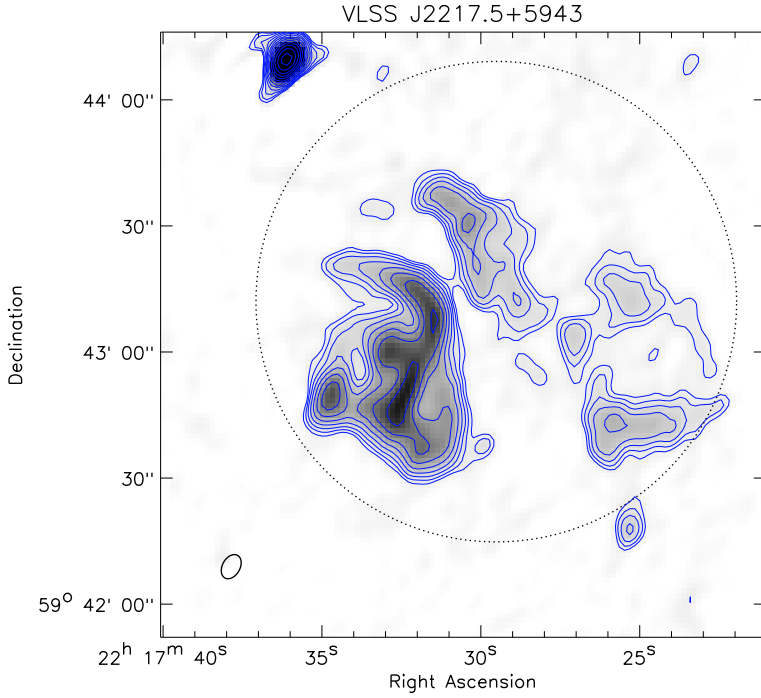


Figure 2.3: GMRT 610 MHz radio map. Contour levels are drawn as in Fig. 2.1 (left panel).

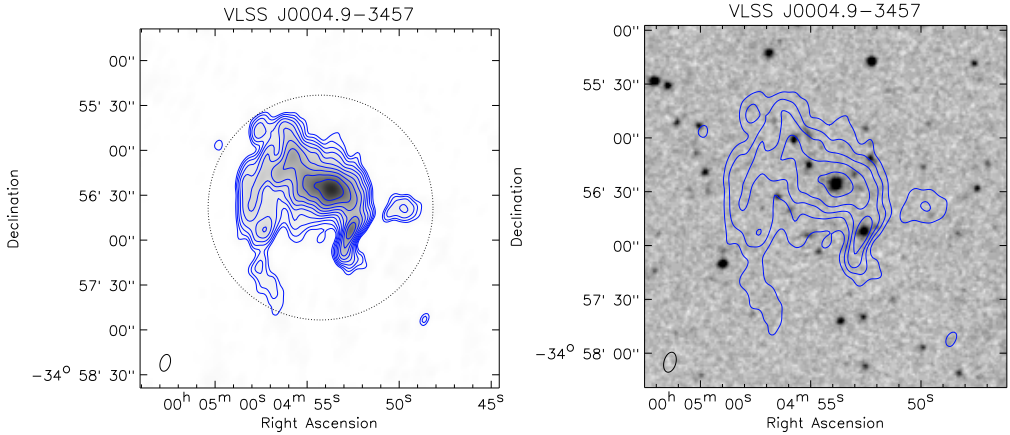


Figure 2.4: Left: GMRT 610 MHz radio map. Contour levels are drawn as in Fig. 2.1 (left panel). Right: POSS-II red image overlaid with GMRT 610 MHz contours. Contour levels are drawn as in Fig. 2.1 (right panel).

2.4.1.4 VLSS J0004.9–3457

The central component of the radio source is associated with a $K=14.86$ mag elliptical galaxy. An overdensity of galaxies indicates the presence of a cluster, candidate B02291 (Zanichelli et al. 2001) from radio-optically selected clusters of galaxies. We estimate a redshift for the cluster of 0.29 ± 0.08 (using the K -band magnitude and the K - z relation). The cluster may be linked to a larger cluster about $3'$ towards the southwest at a redshift of 0.33 ± 0.09 . The X-ray source 2E 0002.2-3515 (Harris et al. 1996) is probably associated with this cluster of galaxies visible in POSS-II images. The diffuse radio emission surrounding the central elliptical galaxy resembles a mini-halo. No X-ray emission from the ICM of the cluster is detected in the ROSAT All Sky Survey. This implies that the cluster is not very massive. The object is similar to the mini-halo in the cluster MRC 0116+111 located at $z = 0.131$ (Gopal-Krishna et al. 2002; Bagchi et al. 2009), which was also not detected in the ROSAT All Sky Survey. The size of the mini-halo is about 200 kpc, similar to other mini-halos (e.g., Govoni et al. 2009). The radio image shows a bright knot at RA $00^{\text{h}} 04^{\text{m}} 52.5^{\text{s}}$ DEC $-34^{\circ} 56' 55''$, to the south of the main component. This knot has an optical counterpart. To the east an arc-like structure extends from the central component and bends towards the south. The arc is not associated with an optical counterpart. The origin of the arc is unclear, it could be part of a disturbed FR-I source, or a relic-like structure of fossil radio plasma.

2.4.1.5 VLSS J0717.5+3745, MACS J0717.5+3745

The radio source is associated with the massive X-ray luminous cluster MACS J0717.5+3745 at $z=0.5548$, with an overall ICM temperature of 11.6 keV (Ebeling et al. 2001; Edge et al. 2003; Ebeling et al. 2007). The cluster shows a pronounced substructure in optical images. Ebeling et al. (2004) reported the discovery of a large-scale filamentary structure of galaxies connected to the cluster. NVSS, WENSS and VLSS images reveal the presence of a steep-spectrum radio source ($\alpha = -1.15$). The radio source was classified as a radio relic by Edge et al. (2003). Ma et al. (2009) presented X-ray (Chandra) and optical observations (Hubble Space Telescope, ACS; Keck-II, DEIMOS) of the cluster. They found the cluster to be an active triple merger. Temperatures in the cluster exceeding 20 keV were found in some regions. Regions with a lower temperature of ~ 5 keV were found at the position of two subclusters, probably remnants of cool cores.

Here we shortly describe our results for this cluster, a more detailed analysis in combination with additional archival VLA observations has been presented in a separate paper (van Weeren et al. 2009d), see also Bonafede et al. (2009a). Our radio maps reveal a complex source, consisting of different components. The main component is a twisted structure, with enhanced regions of radio emission in the north and southwest of the cluster. These regions are connected by two bridges of emission to a bright central elongated source. The structure has a linear size of 700 kpc. No obvious counterparts are visible for both the north and south-west components. The presence of the two radio bridges suggest a relation with the central component. Although, no obvious counterpart was found for the central component by Edge et al. (2003), we identify an elliptical galaxy at RA $07^{\text{h}} 17^{\text{m}} 35^{\text{s}}.5$, DEC $+37^{\circ} 45' 05''.5$ as a possible counterpart. If this is indeed the case then the source could be a wide-angle tail (WAT) source with the two bridges being the tails of the central source and the north and south-west components the hotspots. The eastern boundary of the structure is sharp, while on the other side some faint emission is seen extending further westwards. Diffuse radio emission is also seen to the south of the main structure.

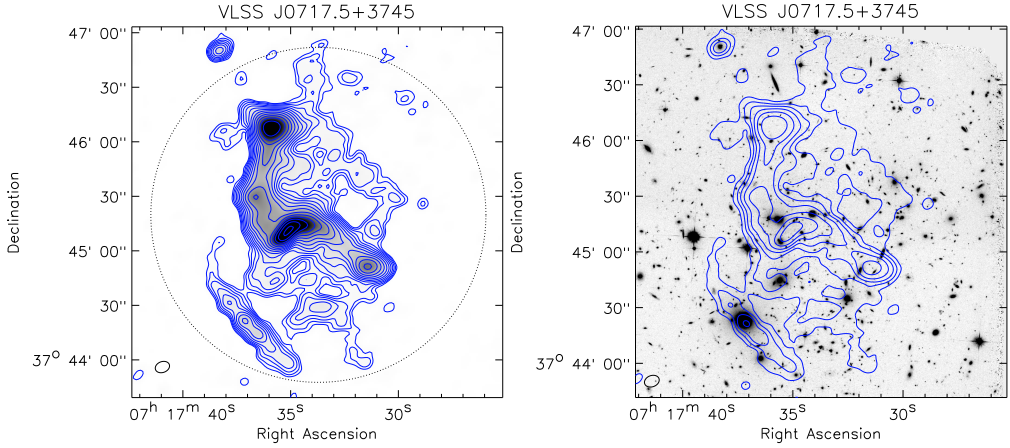


Figure 2.5: Left: GMRT 610 MHz radio map. Contour levels are drawn as in Fig. 2.1 (left panel). Right: HST F814W ACS image overlaid with GMRT 610 MHz contours. Contour levels are drawn as in Fig. 2.1 (right panel).

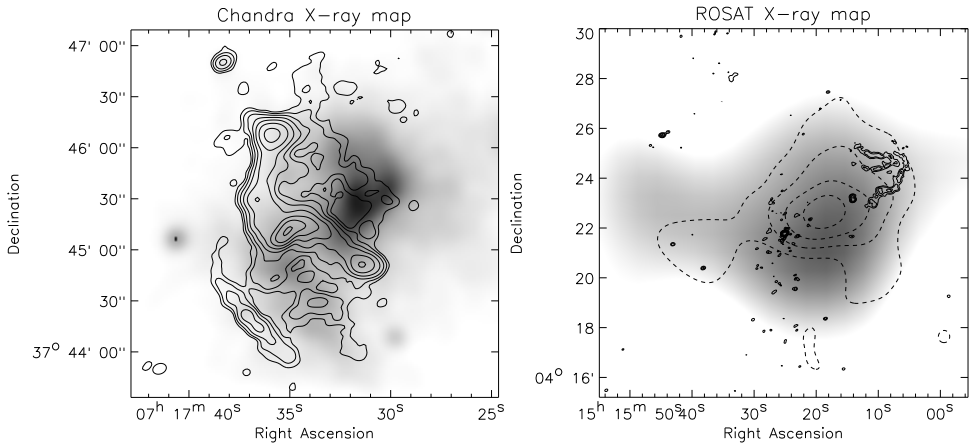


Figure 2.6: Left: Chandra X-ray map overlaid with radio contours at 610 MHz from the GMRT. The color scale represents the X-ray emission from 0.5 – 7.0 keV. The image has been adaptively smoothed using the TARA^a package using a minimal significance of 5. Contour levels are drawn at $[1, 2, 4, 8, 16, 32, \dots] \times 0.312 \text{ mJy beam}^{-1}$. Right: X-ray emission from ROSAT in the 0.1 – 2.0 keV energy band. The image has been convolved with a circular Gaussian of $225''$. The solid contours represent the radio emission at 610 MHz from the GMRT. The radio contours are drawn at $[1, 2, 4, 8, 16, 32, \dots] \times 7\sigma_{\text{rms}}$. Dashed contours show the galaxy distribution from SDSS DR7. Only galaxies with a photometric redshift between $0.06 + z_{\text{err}} < z < 0.15 - z_{\text{err}}$ were selected from the catalogs, with z_{err} the error in the photometric redshift and $z = 0.0972$. The galaxy isodensity contours are drawn at $[6, 9, 12, 15, \dots]$ galaxies arcmin^{-2} .

^a <http://www.astro.psu.edu/xray/docs/TARA>

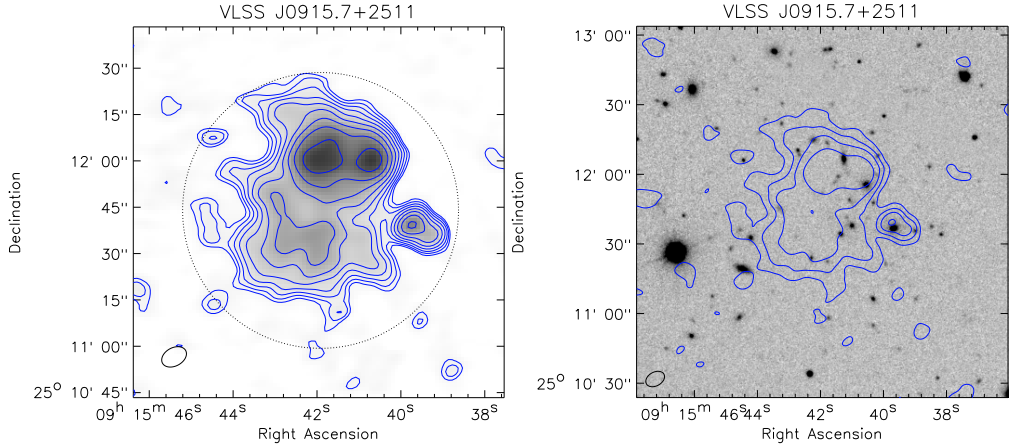


Figure 2.7: Left: GMRT 610 MHz radio map. Contour levels are drawn as in Fig. 2.1 (left panel). Right: SDSS r band image overlaid with GMRT 610 MHz contours. Contour levels are drawn as in Fig. 2.1 (right panel).

The diffuse emission within the cluster has a total size of about 1.2 Mpc and given that it roughly follows the X-ray emission we classify it as a radio halo. Clearly, the emission is not associated with individual sources. Using a spectral index of -1.2 , typical for radio halos, we estimate the radio power ($P_{1.4}$) to be $5 \times 10^{25} \text{ W Hz}^{-1}$. This makes it the most powerful radio known to date, in agreement with the X-ray luminosity-radio power ($L_X - P_{1.4}$) and temperature-radio power ($T - P_{1.4}$) correlations (Liang et al. 2000; Enßlin & Röttgering 2002; Cassano et al. 2006).

Towards the south a fainter linear structure is seen. A compact core, located halfway the linear structure is associated with a bright elliptical foreground galaxy (RA $07^{\text{h}} 17^{\text{m}} 37^{\text{s}}.2$, DEC $+37^{\circ} 44' 23''$). The source is probably a FR-I source associated with the compact core.

Interestingly, the main twisted radio structure is located in between the brightest X-ray emission of the cluster. The main cool core visible in the X-ray image has no radio emission associated with it. The central radio structure also coincides with regions having a significantly higher X-ray temperature $\gtrsim 15 \text{ keV}$. The ICM temperature and X-ray morphology of the cluster favor of a relic-like interpretation. We therefore conclude that the twisted radio structure is a giant relic tracing a shock front linked to the merger activity of the system.

2.4.1.6 VLSS J0915.7+2511

The radio map shows a diffuse region of emission associated with a cluster of galaxies (MaxBCG J138.91895+25.19876) at a redshift of 0.324. The radio source consists of a northern component and a fainter southern one. To the west a source is associated with an elliptical galaxy (RA $09^{\text{h}} 15^{\text{m}} 39^{\text{s}}.7$, DEC $+25^{\circ} 11' 37''$). A few possible counterparts are visible in SDSS DR7 images for the northern diffuse component. The southern diffuse component has no obvious optical counterpart. This could be a radio relic with a projected size of about 190 kpc. High-resolution observations will be needed to confirm this interpretation.

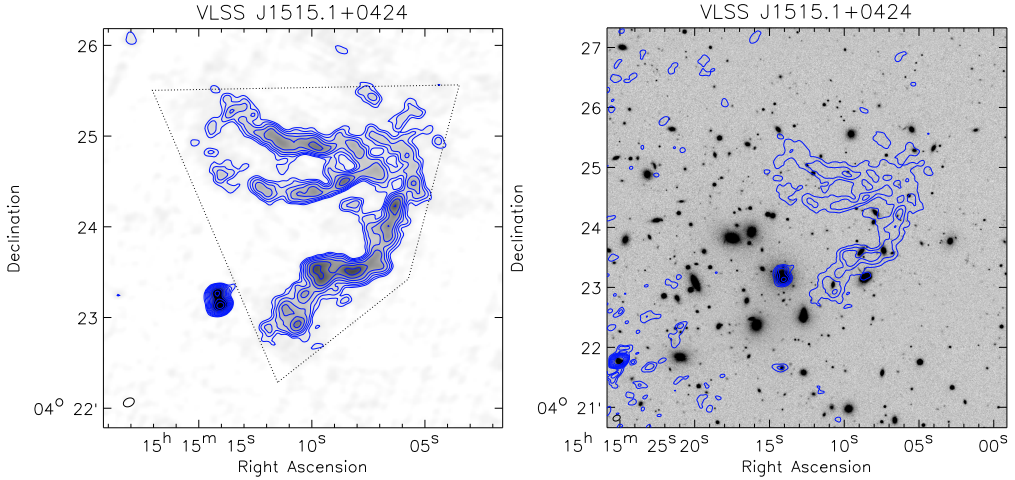


Figure 2.8: Left: GMRT 610 MHz radio map. Contour levels are drawn as in Fig. 2.1 (left panel). Right: SDSS r band image overlaid with GMRT 610 MHz contours. Contour levels are drawn as in Fig. 2.1 (right panel).

2.4.1.7 VLSS J1515.1+0424, Abell 2048

The radio image shows a filamentary radio source in the periphery of the cluster Abell 2048 at a redshift of 0.0972. The source consists of three elongated structures orientated roughly east-west. The three structures connect to the east. The source could be a complex double WAT source. However, the radio structure itself does not seem to be connected to any particular galaxy. The source has a projected size of 310 kpc, if located in the cluster. In the southeast a compact double-lobe source is associated with a large elliptical galaxy (RA $15^{\text{h}} 15^{\text{m}} 14^{\text{s}}.1$, DEC $+04^{\circ} 23' 10''$) located in the cluster. On the other side of the cluster a 0.19 Jy source (PMN J1515+0421) limits the dynamic range. The cluster is also detected in X-rays as RX J1515.2+0421 (Bade et al. 1998). A substructure on the east-side of the main cluster is visible, hinting at a possible cluster merger, see Fig. 2.6 (right panel). Given the location of the radio source at the edge of the cluster, the lack of a connection with a single optical counterpart, the steep radio spectrum, and the morphology, we classify the source as a peripheral radio relic.

2.5 Spectral index modeling

Radio spectra can be an important tool to understand the origin of the relativistic electrons and to determine the age of the radio emitting plasma. We have combined our flux measurements at 610 MHz with literature values to determine the radio spectra for the sources in our sample. We have included flux measurements from the following surveys: 38 MHz 8C (Rees 1990; Hales et al. 1995), 74 MHz VLSS, 151 MHz 7C (Waldram et al. 1996; Hales et al. 2007), 232 MHz Miyun (Zhang et al. 1997), 325 MHz WENSS (Rengelink et al. 1997), 352 MHz WISH (De Breuck et al. 2002a), 365 MHz TEXAS (Douglas et al. 1996) and 1400 MHz NVSS.

Table 2.2: JP model fits with $\alpha_{\text{inj}} = -0.75$

Source Name	t_{CI} 10^8 yr	t_{RE} 10^8 yr	B'_{eq} μGauss
VLSS J0646.8-0722	0.227 ± 0.0775	0.0869 ± 0.00624	24.5
VLSS J1133.7+2324	0.121 ± 0.034	0.0870 ± 0.00634	23.3
VLSS J1710.5+6844	0.421 ± 0.259	0.0946 ± 0.00812	23.1
24P73 (VLSS J2217.5+5943), $z = 0.05$	0.156 ± 0.0464	0.120 ± 0.00406	29.1
24P73 (VLSS J2217.5+5943), $z = 0.10$	0.173 ± 0.0534	0.131 ± 0.00503	27.0
24P73 (VLSS J2217.5+5943), $z = 0.15$	0.176 ± 0.0557	0.131 ± 0.00443	26.4
24P73 (VLSS J2217.5+5943), $z = 0.20$	0.169 ± 0.0500	0.129 ± 0.00497	26.3

We model the integrated radio spectra using the Jaffe-Perola (JP) model (Jaffe & Perola 1973) described by Komissarov & Gubanov (1994), see also Slee et al. (2001). We assume that (i) synchrotron self-absorption is negligible as this only occurs in compact sources, (ii) radiative energy losses dominate over other losses such as adiabatic ones, (iii) the magnetic field is spatially uniform and constant in time, (iv) radiative electrons do not escape from the region, (v) the emission in the region is uniform, (vi) relativistic electrons were injected at a single point with a power-law distribution of energy, and (vii) the pitch angles of the synchrotron emitting electrons are assumed to be continuously isotropized on a timescale shorter than the radiative timescale. Relativistic electrons lose their energy by synchrotron emission and IC scattering off the cosmic microwave background (CMB).

In the Kardashev-Pacholczyk (KP) model (Kardashev 1962; Pacholczyk 1970), also used by Komissarov & Gubanov (1994), the pitch angle of the electrons remains in its original orientation with respect to the magnetic field. This introduces one more free parameter in the spectral index modeling (the ratio between the source magnetic field (B) and the effective magnetic field for IC losses (B_{IC}). We have chosen not to fit this model to limit the number of free parameters. Furthermore, the JP model is more realistic from a physical point of view, as an anisotropic pitch angle distribution will become more isotropic due to changes in the magnetic field strength between different regions and scattering by self-induced Alfvén waves (e.g., Carilli et al. 1991; Slee et al. 2001).

Our adopted scenario is as follows: When the source starts, we assume that it is fueled at a constant rate for a certain time t_{CI} (the time of the continuous injection (CI) of relativistic electrons, with an injection spectral index α_{inj}). This is followed by a relic phase (RE) where the injection of electrons is switched off (t_{RE}). During both of these phases the electrons lose energy by synchrotron and IC losses. The total source age is $t_{\text{age}} = t_{\text{RE}} + t_{\text{CI}}$.

In the spectrum two break frequencies occur both related to spectral aging. The first is the break frequency ν_{b} of the first injected electron population (at the beginning of the CI phase)

$$\nu_{\text{b}} \propto \frac{B}{([B^2 + B_{\text{IC}}^2]t)^2}. \quad (2.3)$$

A second higher frequency break ν_{b} is caused by the last electron population injected, at the

end of the CI phase

$$\nu_b = \nu_b \left(1 + \frac{t_{\text{CI}}}{t_{\text{RE}}} \right)^2. \quad (2.4)$$

The injection spectral index (α_{inj}) is determined by the AGN in the case of (relic) radio lobes or radio phoenixes. For relics where the particles are accelerated by DSA the injection spectral index is related to the Mach number (\mathcal{M}) of the shock. In linear theory the relevant expression is

$$\alpha_{\text{inj}} = -\frac{3\mathcal{M}^{-2} + 1}{2 - 2\mathcal{M}^{-2}}, \quad (2.5)$$

see van Weeren et al. (2009b). The injection time must be comparable with the crossing time of the relic region by the shock front. Since ‘‘DSA-relics’’ are mostly located in the cluster periphery, where the pressure of the ICM gas is lower, adiabatic energy losses may become important. These adiabatic energy losses affect the radio spectrum, depending on the expansion rate of the relic and evolution of the magnetic field strength ($B(t)$) with time (Kardashev 1962; Goldshmidt & Rephaeli 1994; Murgia et al. 2002). However, we only have a limited number of flux measurements for our sources and only one proposed DSA-relic with enough flux measurements to model the spectrum. Furthermore, the location of this relic in the cluster as well as the identification of the cluster itself are uncertain. We therefore chose to ignore the effects adiabatic expansion losses.

The JP model is thus characterized by four free parameters: (1) the injection spectral index α_{inj} , (2) the length of the CI phase t_{CI} , (3) the length of the RE phase t_{RE} , and (4) a flux normalization constant. To reduce the number of free parameters we have chosen to keep α_{inj} fixed to a value of -0.75 (Parma et al. 2007).

The spectra are fitted by minimizing the χ -squared value of the fit in a two-step process. We first determine the shape of the spectrum for different values of t_{RE} and t_{CI} , both ranging from 0 to 10^9 yrs in 25 equal logarithmically spaced steps. Then an overall flux scaling (normalization) constant is determined by multiplying the spectrum with a constant until the χ -squared value is minimized. In this way, a 2-dimensional (25×25) array of χ -squared values is created. We continue the fitting using the same process but now centering the t_{RE} and t_{CI} values around the minimum χ -squared value in the array and increasing the time resolution by a factor of 1.5. The process is repeated until both t_{RE} and t_{CI} converge to a constant value, i.e., do not change by more than 1% between subsequent iterations. The formal errors in the fitted parameters are determined by the corresponding distribution of the χ -squared values. For the sources where we successfully fitted the JP-model we should take in mind that some of the simplifying assumptions we made may not be valid and could have affected our results.

For the magnetic field strength we use the revised equipartition magnetic field strength B'_{eq} (Brunetti et al. 1997; Beck & Krause 2005). We use the same procedure as in van Weeren et al. (2009b) and take for the depth of the source (d) the average of the major and minor axis. The ratio of energy in relativistic protons to that in electrons (k) is set to 100. For the low-energy cutoff (γ_{min} , the energy boundary indicated by the Lorentz factor) we take 100. For other values of k and γ_{min} , B'_{eq} scales with $\gamma_{\text{min}}^{(1+2\alpha)/(3-\alpha)} (1+k)^{1/(3-\alpha)}$, with α the spectral index.

We have only fitted the radio spectra for sources with a redshift (because the energy loss rate due to IC scattering is proportional to $(1+z)^4$) and at least four flux measurements available. An exception is 24P73 (or VLSS J2217.5+5943) for which we have no redshift. If 24P73 has a similar size as the relic in A85 (150 kpc, Slee et al. 2001), then its redshift would be around

0.1. Since this is a very rough estimate we have also fitted the radio spectrum using redshifts of 0.05, 0.15, and 0.2.

The fluxes for the sources could be contaminated by the presence of field sources within the beam of the low-resolution surveys. In the case of 24P73, there is a 5.0 mJy NVSS source (NVSS J221736+594403) nearby which is blended with the diffuse source in the 8C, VLSS, and WENSS surveys. We fitted a second order polynomial in log-log space to the 610 MHz GMRT, NVSS, and the 1.4 and 8.4 GHz fluxes from Green & Joncas (1994) for this source. We then extrapolated the flux to 325, 74, and 38 MHz and subtracted off this flux to recover the uncontaminated flux for the diffuse source. For the three other diffuse sources no unrelated sources were found that could have significantly contributed to the flux.

The fitted radio spectra are shown in Fig. 2.9. The values for t_{CI} , t_{RE} , and B'_{eq} are reported in Table 2.2. The fitting process for the sources VLSS J1636.5+3326, VLSS J2213.2+3411, VLSS J0004.9–3457 did not converge. For VLSS J1636.5+3326 the 1.4 GHz flux measurement is relatively high, in this case the source may have restarted its activity causing the high 1.4 GHz flux value. This is also seen for several radio sources by Parma et al. (2007). For the other sources the flux measurements are too closely spaced in frequency to provide enough constraints for the fitting process.

For the sources where we successfully modeled the synchrotron spectrum $t_{\text{CI}} > t_{\text{RE}}$. All of these sources show steepening of the radio spectrum at higher frequencies which is expected in case of spectral aging. For 24P73 the spectral index modeling is consistent with the source being a radio phoenix with a total source age of 3×10^7 yrs. We find that the derived synchrotron age does not critically depend on the adopted redshift of 0.1 for this source (see Table 2.2).

2.6 Discussion

Based on their toroidal or filamentary morphologies and curved radio spectra two of our relics could be classified as radio phoenixes: VLSS J1515.1+0424 and VLSS J2217.5+5943. Contrary, VLSS J1133.7+2324 and the twisted structure in MACS J0717.5+3745 are probably the result of DSA from structure formation shocks. In the case of VLSS J0717.5+3745, the distorted morphology and high temperature of the ICM are clear evidence for a cluster undergoing a merger. For the other relics more observations are needed to determine their origin.

Most of the sources in our sample are associated with galaxies in clusters and show irregular morphologies. This can be caused by the interaction of the radio plasma with the ICM. The steep spectrum of the sources is caused by spectral aging, e.g., in some cases the central AGN activity may have stopped, producing a so called “dying” radio source. Confinement of the radio plasma by the ICM could also have contributed to the steep radio spectra, as in this case the radio plasma has “the time” to display the effects of spectral aging.

We have calculated the physical size (largest extent), projected distance from the cluster center ($R_{\text{projected}}$), and 1.4 GHz radio power ($P_{1.4}$) for the radio relics in our sample. We have complemented this with values from the literature for radio relics with measured spectral indices: A13, A85, A133, and A4038 (Slee et al. 2001), A1240 and A2345 (Bonafede et al. 2009b), A3667 (Röttgering et al. 1997), A548b (Feretti et al. 2006), A2256 (Clarke & Ensslin 2006), A521 (Giacintucci et al. 2008), 1253+275 (Giovannini et al. 1991), A2163 (Feretti et al. 2004), A2744 (Orrú et al. 2007), AS753 (Subrahmanyan et al. 2003), A115 (Govoni et al. 2001) A610 (Giovannini & Feretti 2000) and RXC J1314.4-2515 (Venturi et al. 2007). The spectral indices

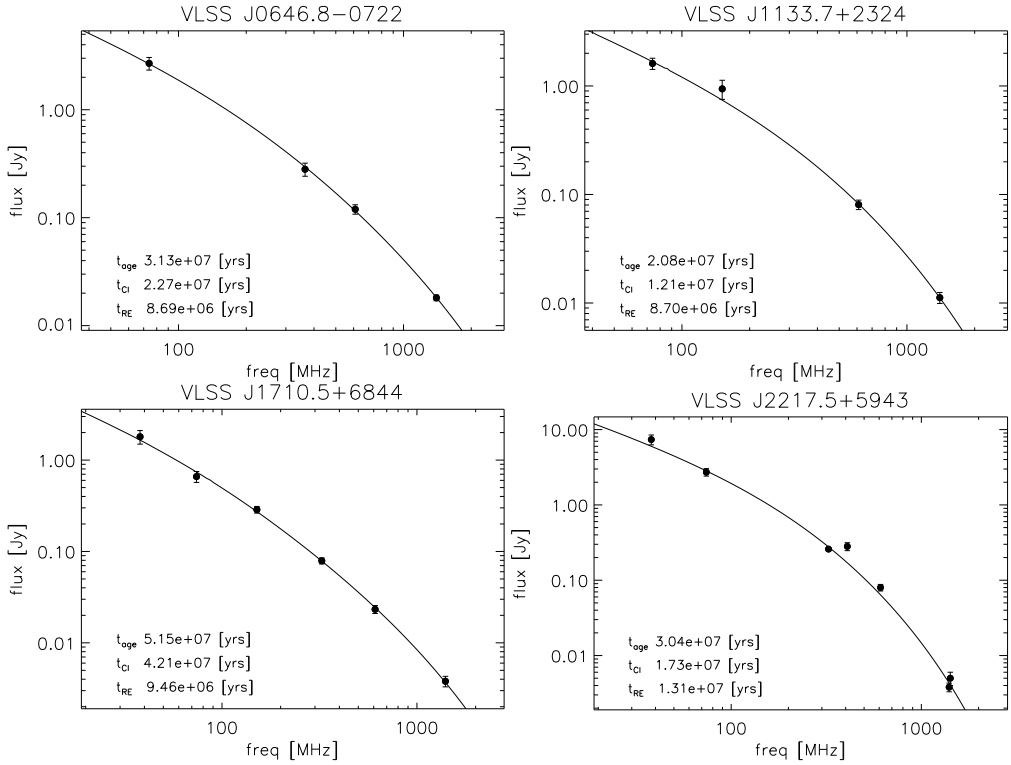


Figure 2.9: Jaffe-Perola fit to the flux measurements. The duration of the CI and RE phases are indicated in the figure. Top left: VLSS J0646.8-0722; Top right: VLSS J1133.7+2324; Bottom left: VLSS J1710.5+6844; Bottom right: VLSS J2217.5+5943 (24P73 and using $z = 0.1$).

Table 2.3: Radio relic properties

Source Name	$\alpha_{74\text{MHz}}^{1400\text{MHz}}$	spectral curvature $\alpha_{74\text{MHz}}^{610\text{MHz}} - \alpha_{610\text{MHz}}^{1400\text{MHz}}$	$P_{1.4}$ $10^{24} \text{ W Hz}^{-1}$	size ^a kpc	$R_{\text{projected}}$ kpc
VLSS J1133.7+2324	-1.69	0.96	24.1	570	
VLSS J1431.8+1331 ^d	125	175
24P73 (VLSS J2217.5+5943)	-2.20	2.0
MACS J0717.5+3745	-1.09 ^b	-0.02	138 ^b	700	320
Abell 2048 (VLSS J1515.1+0424)	-1.50	1.60	0.566	310	310
Abell 2256	-1.2	...	3.95	1100	300
Abell 1240-N	-1.2	...	0.427	650	700
Abell 1240-S	-1.3	...	0.730	1250	1100
Abell 2345-E	-1.3	...	2.62	1500	890
Abell 2345-W	-1.5	...	2.83	1150	1000
Abell 13	-1.79	0.65	0.853	260	170
Abell 85	-2.30	1.36	0.322	150	430
Abell 133	-1.70	1.39	1.07	55	40
Abell 4038	-1.88	1.03	0.0983	55	35
Abell 3667	-1.1	...	17.4	1920	1950
Abell 548b A	~ -2	...	0.260	310	500
Abell 548b B	< -2.0	...	0.250	370	430
Abell 521	-1.48	...	2.90	1000	930
Coma cluster ^c	-1.18	...	0.284	850	1940
Abell 2163	-1.02	...	2.23	450	1550
Abell 2744	-1.1	...	6.20	1620	1560
Abell S753	-2.0	...	0.205	350	410
Abell 115	-1.1	...	16.7	1960	1510
Abell 610	-1.4	...	0.444	330	310
RXCJ1314.4-2515-E	-1.41	...	2.08	920	685
RXCJ1314.4-2515-W	-1.40	...	4.81	920	685

^a largest linear scale

^b excluding the flux of the halo and central head-tail source (see also van Weeren et al. 2009d; Bonafede et al. 2009a)

^c 1253+275

^d blended with a nearby AGN (except in the GMRT 610 MHz image), therefore no spectral index or spectral curvature could be calculated

for our newly found relics were calculated between 74 and 1400 MHz. The spectral indices for the relics taken from the literature were usually measured between 325 and 1400 MHz, but for some relics the frequency range is somewhat different (for more details the reader is referred the references given above).

The spectral index of the radio relics, versus the physical size is shown in Fig. 2.10 (left panel). The projected distance from the cluster center is color coded. We find that on average the smaller relics have steeper spectra. There are two different explanations for this correlation. The found correlation between physical size and spectral index may (partly) be the result of the proposed radio phoenixes occupying the lower left region in Fig. 2.10. Ignoring the proposed radio phoenixes the trend remains, although the scatter is large so this result is less significant. Such a trend though, is in line with predictions from shock statistics derived from cosmological simulations (Hoefl et al. 2008; Skillman et al. 2008; Battaglia et al. 2009). They find that larger shock waves occur mainly in lower-density regions and have larger Mach numbers, and consequently shallower spectra. Conversely, smaller shock waves are more likely to be found in cluster centers and have lower Mach numbers and steeper spectra. We note that more spectral index measurements of high quality are needed to confirm the correlation between physical size and spectral index (leaving out the proposed radio phoenixes).

The size of the relics versus $R_{\text{projected}}$ is shown in Fig. 2.10 (right panel). The projected distance from the cluster center for the shallow spectra relics is indeed on average larger than for the steep spectrum relics, indicating that they are mostly located in the periphery of clusters where the Mach numbers of the shock are higher. We contribute this to the fact that in the periphery the shock surfaces are larger and the density/pressure of the ICM is lower. Therefore large radio relics are mainly located in the cluster periphery. Because we are using the projected distance from the cluster center, and not the (unknown) de-projected distance, some additional scatter is introduced in the plot. Furthermore, the spectral indices for the various radio relics are calculated using data from radio telescopes with different array configurations, sensitivities, and/or frequencies ranges, adding to the scatter.

Giant Mpc-scale radio relics are probably caused by DSA in an outwards traveling shock front. It is unlikely that they are the result of compression and reignition of fossil radio plasma as the time to compress such a large radio “ghost” would remove most of the electrons responsible for the radio emission by radiative energy losses (Clarke & Ensslin 2006). In the case of giant peripheral relics shock-acceleration is ongoing resulting in relatively flat spectral indices of about -1 , i.e., a balance between electron cooling in the post-shock regions and continuous acceleration at the shock front. Behind the shock front, the spectral index is indeed observed to steepen for some giant relics (e.g., Röttgering et al. 1997). After a few times 10^8 yrs the electrons behind the shock front have lost most of their energy and cause little synchrotron emission. It takes of the order of 1 Gyr for a shock wave to travel from the center of the cluster to about the virial radius.

As has been mentioned, an alternative explanation for the found size-spectral index correlation could be a possible different origin of the smaller radio relics. With the smaller radio relics originating from the adiabatic compression of fossil radio plasma. In fossil radio plasma, the high-frequency synchrotron emitting electrons have lost most of their energy. Due to compression and the increase in magnetic field strength the radio plasma becomes visible again. Therefore these sources are characterized by (very) steep and curved spectra. Proposed examples of such sources are 24P73 and those found by Slee et al. (2001). If spectral aging occurs, the steeper radio spectra should be more curved.

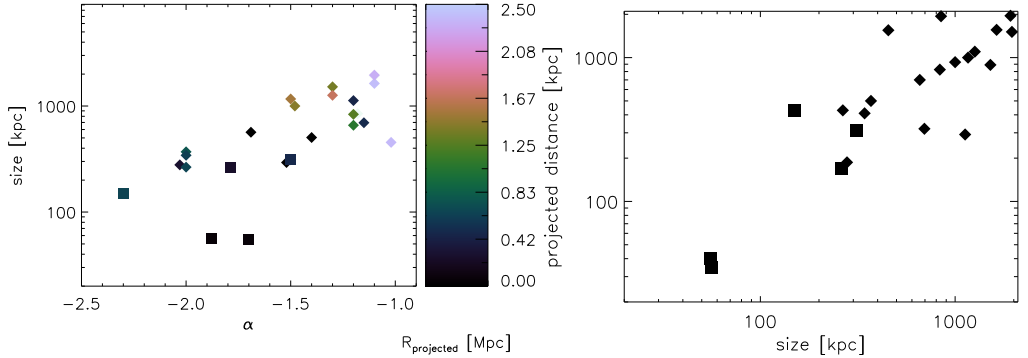


Figure 2.10: Left: Spectral index of radio relics versus their size. Squares are the proposed radio phoenixes, i.e., the sources from Slee et al. (2001), 24P73 and the relic in Abell 2048. Diamonds represent the radio relics tracing merger shocks where particles are being accelerated by the DSA mechanism. The brightness coding is according to the projected distance from the cluster center. For the relics represented by black symbols we could not obtain a reliable projected distance to the cluster center. Right: Projected distance from the cluster center of radio relics versus their size.

It would be interesting to determine the injection spectral indices (α_{inj}) for the radio relics. This requires reliable flux measurements over a wide range of frequencies, especially below the break frequency ν_b . With enough flux measurements it should be possible to separate the effect of spectral aging and a steep α_{inj} . In particular, if the correlation is explained by the different Mach numbers of shocks the injection spectral indices for smaller relics located close to the cluster center should be steeper than that of larger relics. If this is indeed the case this is evidence for DSA. For radio phoenixes the injection spectral index should be around -0.5 to -0.75 because the fossil radio plasma originated from AGN. Their steep spectral indices should then solely be the result of spectral aging and not a steep injection spectral index. Currently, with a limited number of flux measurements, mainly at frequencies where electrons have already lost some of their energy, there is a degeneracy between the injection spectral index and the amount of spectral aging. New low-frequency radio facilities, such as LOFAR, will be needed to determine α_{inj} for radio relics.

The spectral index versus the 1.4 GHz radio power for the relics is shown in Fig. 2.11 (left panel). From the figure we can see that there is a lack of high power sources with steep radio spectra. This is not surprising since relics with less steep spectra are larger (Fig. 2.10) and therefore should have a higher radio power.

We have plotted the amount of spectral curvature for our sources versus their spectral index, between 74 and 1400 MHz, in Fig. 2.11 (right panel). The curvature is defined as $\alpha_{74-610} - \alpha_{610-1400}$. A higher positive value for the curvature implies that the spectra are steeper at higher frequencies. We have only added the four sources from Slee et al. (2001) for which flux measurements at both 1.4 GHz and 74 MHz (VLSS) are available. We calculated the 610 MHz fluxes by interpolating the fluxes (linearly in log-log space) between 408 and 834 MHz. For other radio relics, flux measurements are less reliable or not available at 74 and/or 610 MHz. As shown in Fig. 2.11 there is an indication that the curvature is higher for the sources with a steeper spectral index, although the number of sources in the plot is rather low. If the spectral index of

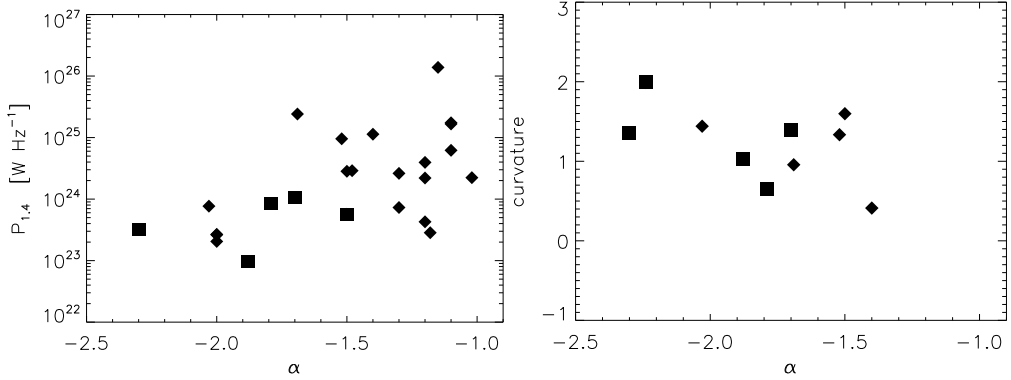


Figure 2.11: Left: Radio power at 1.4 GHz of radio relics versus their spectral index. Symbols are defined in Fig. 2.10. Right: Curvature of the radio spectra versus their spectral index between 74 and 1400 MHz. The curvature is defined as $\alpha_{74-610} - \alpha_{610-1400}$.

relics steepens by spectral aging such a trend is expected, but more measurements of spectral curvature will be needed to show that this correlation with the spectral index really exists.

2.7 Conclusions

We carried out 610 MHz radio continuum observations with the GMRT of 26 diffuse steep spectrum sources. All of these sources were resolved out by 1.4 GHz VLA B-array snapshot observations or in the 1.4 GHz FIRST survey. Of these 26 sources 25 were detected with the GMRT. The radio observations show a wide range of sources: radio relics, a giant radio halo, a mini-halo, FR-I, head-tail, and USS sources. Here we shortly summarize the properties of the relics and halos in our sample.

-The radio relic 24P73 (VLSS J2217.5+5943) is located close to the galactic plane. This source was previously known to have a steep spectrum but remained unclassified due to the limited sensitivity and resolution of previous observations. Due to the crowded Milky Way field and high extinction no cluster is found in POSS-II images. Deep NIR imaging will be needed to reveal the presence of a cluster. The sources has an extremely steep curved spectrum, likely the result of adiabatic compression of fossil radio plasma and spectral aging.

-VLSS J1133.7+2324 is a filamentary relic located next to a nearby spiral galaxy. The radio source breaks up into two parallel filamentary structures. This relic source is probably associated with a structure of galaxies located at a distance of $z \sim 0.6$. The nearby spiral galaxy itself is also detected in the radio images, the flux density consistent with that predicated by the FIR-radio correlation (using IRAS fluxes for this galaxy). The galaxy is partly blocking our view of the distant structure of galaxies, making follow-up observations more difficult.

-VLSS J1431.8+1331 consists of two components. The eastern part is probably associated with a cD galaxy in the center of the cluster MaxBCG J217.95869+13.53470 at $z = 0.16$. The radio morphology suggests we are seeing signs of interaction between the radio plasma and the ICM. The other part is probably a relic source. These sources makes an interesting target for

follow-up X-ray observations.

-VLSS J0004.9–3457 is associated with an elliptical galaxy in a small cluster at $z \sim 0.3$. The diffuse radio emission surrounds the galaxy in the form of a mini-halo. The source has an arc-like extension to the east.

- VLSS J0717.5+3745 is located in the cluster MACS J0717.5+3745, a massive merging system at a redshift of 0.5548. The radio emission is complex, consisting of a large elongated radio relic and a giant 1.2 Mpc radio halo. The halo has a radio power ($P_{1.4}$) of $5 \times 10^{25} \text{ W Hz}^{-1}$, the highest one known to date. The relic might trace a giant shock wave related to the cluster merger. This is consistent with the very hot ICM and relatively flat spectral index.

-VLSS J1515.1+0424 is a radio relic consisting of three filamentary structures in the periphery of the cluster Abell 2048. Adiabatic compression of fossil radio plasma probably resulted in the complex morphology.

We find that larger relics are mostly located in the cluster periphery, while smaller relics are found closer to the cluster center. We also discovered a correlation between the spectral index and the physical size of the relics. A likely explanation for this correlation is that the larger shock waves occur mainly in lower-density regions and have larger Mach numbers. As a consequence they have shallower spectra. However, the correlation can also (partly) be explained by invoking different origins for relics. Relics formed by diffusive shock acceleration are direct tracers of large shock fronts in clusters, while the compression of fossil radio plasma is thought to produce relatively small relics with steep curved spectra.

If the correlation is explained by the fact that the larger shock waves occur mainly in lower-density regions and have larger Mach numbers then the injection spectral indices should flatten away from the cluster center for the various relics. To measure this requires a sufficient number of flux measurements, especially below the break frequency in the spectrum. With upcoming new radio facilities operating at lower frequencies it should therefore be possible to break the degeneracy between the injection spectral index and spectral aging.

Follow-up observations to measure the polarization properties are currently underway. We also plan to create spectral index maps for our sources which should give more information on the life-times of the various synchrotron emitting regions. Optical observations have been taken to characterize the large-scale environment around the radio sources. For two of our diffuse sources these observations should confirm the presence of a cluster. X-ray observations will be needed to study the dynamical state of the clusters and reveal the presence of shock fronts in the ICM.

Acknowledgements. We thank the staff of the GMRT who have made these observations possible. The GMRT is run by the National Centre for Radio Astrophysics of the Tata Institute of Fundamental Research. RJvW would like to thank J.B.R. Oonk and A. Omar for helping with the observations, D. A. Green for the discussion about source 24P73, and F. Govoni for pointing out the correct flux of A115. We have used the “cubehelix” color scheme from Green (2011). RJvW acknowledges funding from the Royal Netherlands Academy of Arts and Sciences.

This publication makes use of data products from the Two Micron All Sky Survey, which is a joint project of the University of Massachusetts and the Infrared Processing and Analysis Center/California Institute of Technology, funded by the National Aeronautics and Space Administration and the National Science Foundation. This research has made use of the VizieR catalogue access tool, CDS, Strasbourg, France. The Digitized Sky Surveys were produced at the Space Telescope Science Institute under U.S. Government grant NAG W-2166. The images of these surveys are based on photographic data obtained

using the Oschin Schmidt Telescope on Palomar Mountain and the UK Schmidt Telescope. The plates were processed into the present compressed digital form with the permission of these institutions. The Second Palomar Observatory Sky Survey (POSS-II) was made by the California Institute of Technology with funds from the National Science Foundation, the National Geographic Society, the Sloan Foundation, the Samuel Oschin Foundation, and the Eastman Kodak Corporation.

2.8 Appendix: Other sources in the sample

VLSS J0227.4–1642

The radio map shows two resolved elongated patches of emission. The brighter eastern component has a flux of 25.8 mJy and the weaker western component 11.2 mJy. Both components are resolved, 28.3'' by 10.3'' (eastern component) and 22.3'' by 9.0'' (western component), and show structure at the limit of the $\sim 5''$ beam. The position angles of the longest axes are roughly the same, which suggests a link between the two components. No optical counterpart is detected at the limit of the POSS-II survey. The steep spectral index of about -1.5 could be explained if this source is a FR-I type AGN, where the central engine has stopped and the synchrotron emission in the two lobes has steepened by spectral aging. In this case both components should roughly have the same spectral index.

VLSS J0250.5–1247

The radio observations show a double source. The two components are slightly resolved, have a similar flux and seem to be connected by a faint bridge. The separation between the two radio components is 15''. No optical counterpart is detected.

VLSS J0646.8–0722

The radio map shows a source with an angular size of 1.0' by 0.5'. An optical counterpart (PCG 76039, $\text{mag}_R=18.4$) is detected in both the POSS-II and 2MASS surveys. This galaxy was also listed in the catalog of Galaxies Behind the Milky Way (CGMW 1-0379, Saito et al. 1990) and in the catalog Galaxies in the "zone of avoidance" (ZOAG G218.99-04.37, Weinberger et al. 1995) and was in both cases classified as an elliptical galaxy. The amount of extinction in this region is $A_B = 2.2$ mag. The radio map shows a one-sided tail originating from the optical counterpart. This might indicate that the source is located in a cluster and we see the effects of the interaction between radio plasma and the surrounding ICM.

VLSS J1117.1+7003

This source has a remarkable steep and straight radio spectrum without any indication of a flux turnover at lower frequencies. The source is resolved into a smooth featureless roughly spherical blob (26'' by 23''). No optical counterpart is detected. Given the steep straight radio spectrum it could be a radio halo, however the small size of the source argues against such an identification. The source could be a mini-radio halo surrounding a central cD galaxy of a distant (proto) cluster.

VLSS J1636.5+3326

The radio map shows two compact components, with the northern component extending to the west. SDSS images show several faint mostly red galaxies around the radio source. Photometric redshifts (SDSS DR7) indicate the presence of a cluster at $z = 0.65 \pm 0.19$. Several galaxies can be identified as possible optical counterparts.

VLSS J1710.5+6844

This “head-tail” radio source has a length of $0.73'$ and a width of $0.27'$. An optical counterpart is detected, a galaxy with a K-magnitude of 14.75. An optical *i*-band image from the 2.5m Isaac Newton Telescope (INT) shows that this source is located within a cluster at a redshift of $z \sim 0.3$. An east-west elongated X-ray source 1RXS J171034.0+684403 follows roughly the galaxy distribution confirming the presence of a cluster.

VLSS J1930.4+1048

The radio map shows an elongated source with a LAS of $101''$. The radio morphology is consistent with a FR-I radio source. No optical counterpart is detected at the position of the core, but this is not surprising given the amount of extinction ($A_B = 3.759$) at this galactic latitude of -3.6 degrees and the high star density in the POSS-II images. A 69.6 mJy (probably unrelated) radio source is located $70''$ to the north.

VLSS J2043.9–1118

An optical counterpart for this source is detected in POSS-II images. The faint optical source is located on the peak of the radio emission. The radio emission surrounds the galaxy and there is a hint of a faint extension to the east.

VLSS J2044.7+0447

The source is elongated in the east-west direction and has a LAS of $101''$. A R-magnitude 19.56 galaxy corresponds to a peak in the radio emission, consistent with this being a FR-I radio source. The high rms noise in the radio map is caused by dynamic range limitations from 4C 04.71, a 1.24 Jy source (610 MHz), located $3.3'$ to the south.

VLSS 2122.9+0012

The radio source is compact, $11.6''$ by $10.7''$. This is probably a USS source associated with a HzRG. The lack of an optical counterpart in SDSS images is consistent with this explanation, and implies the source is located at $z \gtrsim 1.4$.

VLSS J2213.2+3411

This source was also included in the USS sample of De Breuck et al. (2000), WN J2213+3411. A K_s band image from De Breuck et al. (2002b) showed a possible counterpart. However, because no high-resolution ($\lesssim 10''$) VLA images were available the identification was uncertain on the basis of position alone. Our high-resolution $5''$ image shows a distorted double-lobe source. The central radio core is not detected. The NIR counterpart is located in between the two lobes, confirming that this is indeed the host galaxy. The K-band magnitude of 18.3 implies a redshift of 1.6 ± 0.5 for this source using the K-z relation.

VLSS J2341.1+1231

The radio map shows a FR-I type radio source. The northwestern and southeastern lobes are listed as NVSS J234104+123203 and NVSS J234107+123126, respectively. An optical counterpart is detected on POSS-II images at roughly the expected position based on the location of the lobes. This source may be a so called “dying” radio source.

VLSS J2345.2+2157

The radio source shows an S-shape symmetry. An optical counterpart is detected in 2MASS and POSS-II images being the central cD galaxy of a cluster. This is confirmed by the presence of the X-ray source 1RXS J234518.4+215753.

VLSS J0511.6+0254

The radio map shows a FR-I type radio source. Two possible optical counterparts are detected which are the central elliptical galaxies in a cluster at a redshift of about 0.2.

VLSS J0516.2+0103

VLSS J0516.2+0103 is a relatively compact source, without a double lobe structure. The source does not have an optical counterpart in POSS-II images. This implies the source is probably located at $z \gtrsim 0.7$.

VLSS J2209.5+1546

The radio map shows an elongated source. No optical counterpart is detected at the limit of the POSS-II images. The source is probably a distant FR-I source. Optical imaging will be needed to confirm this classification.

VLSS J2241.3–1626

This source could be a disturbed FR-I source, no optical counterpart is detected. Optical imaging will be needed to confirm this classification.

VLSS J2357.0+0441

The source is found to be a blend of three compact sources, all without optical counterparts. By convolving the GMRT image to the NVSS resolution (45'') it seems that the two outer components are responsible for the steep spectrum. These are probably distant FR-II sources.

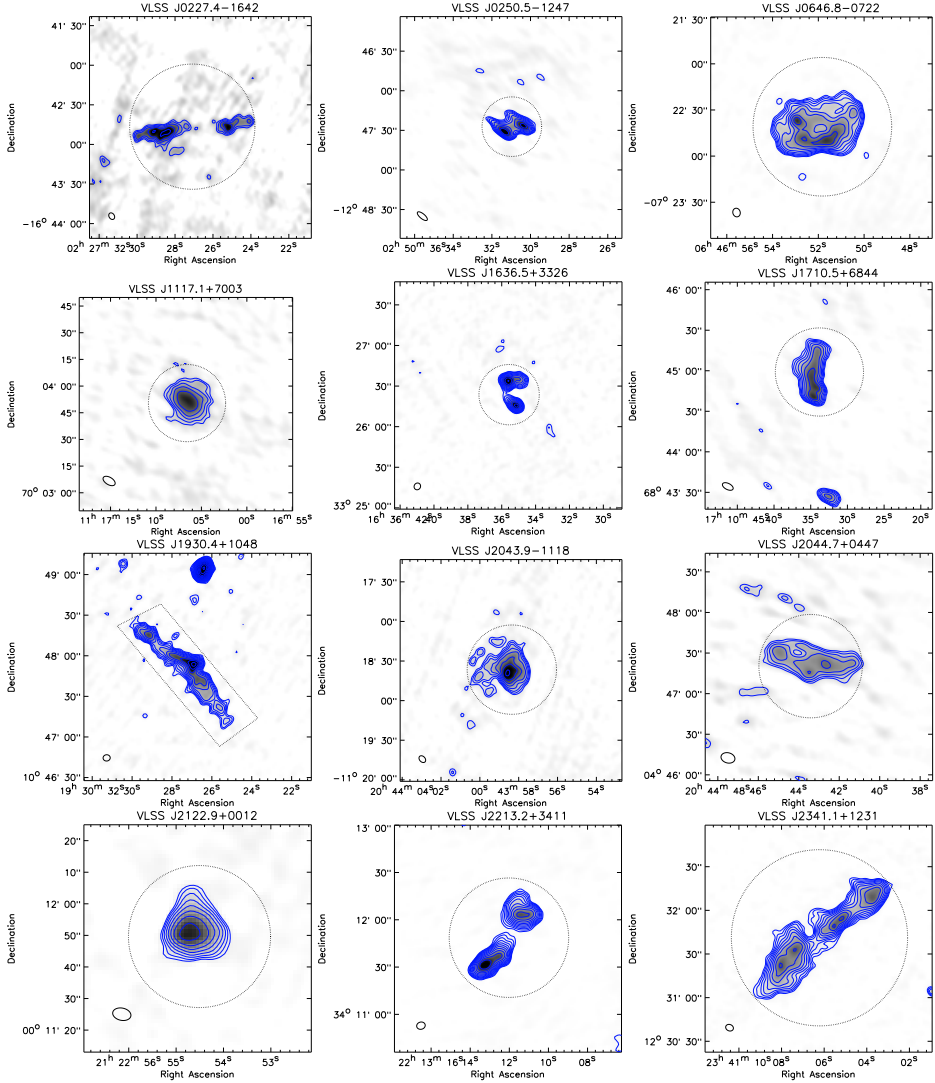


Figure 2.12: GMRT 610 MHz radio maps. Contour levels are drawn as in Fig. 2.1 (left panel).

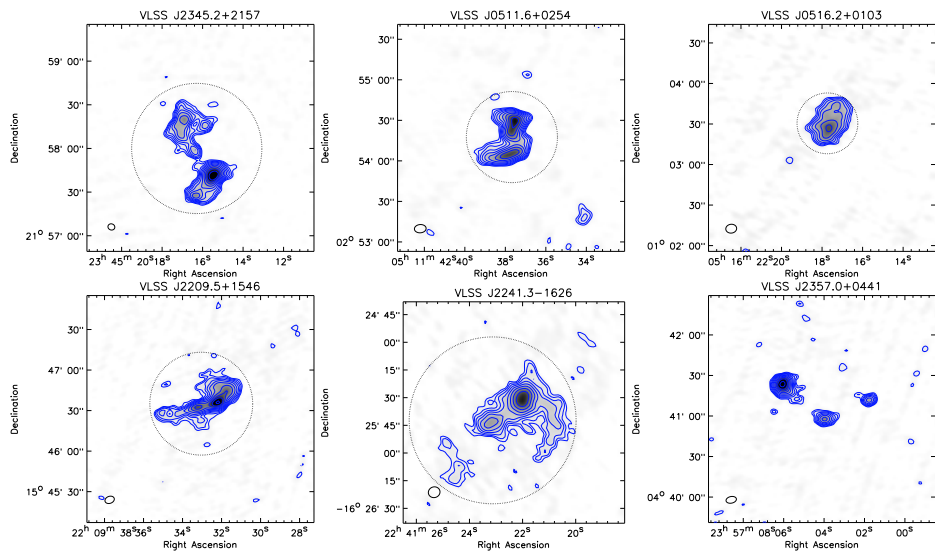


Figure 2.13: GMRT 610 MHz radio maps. Contour levels are drawn as in Fig. 2.1 (left panel).

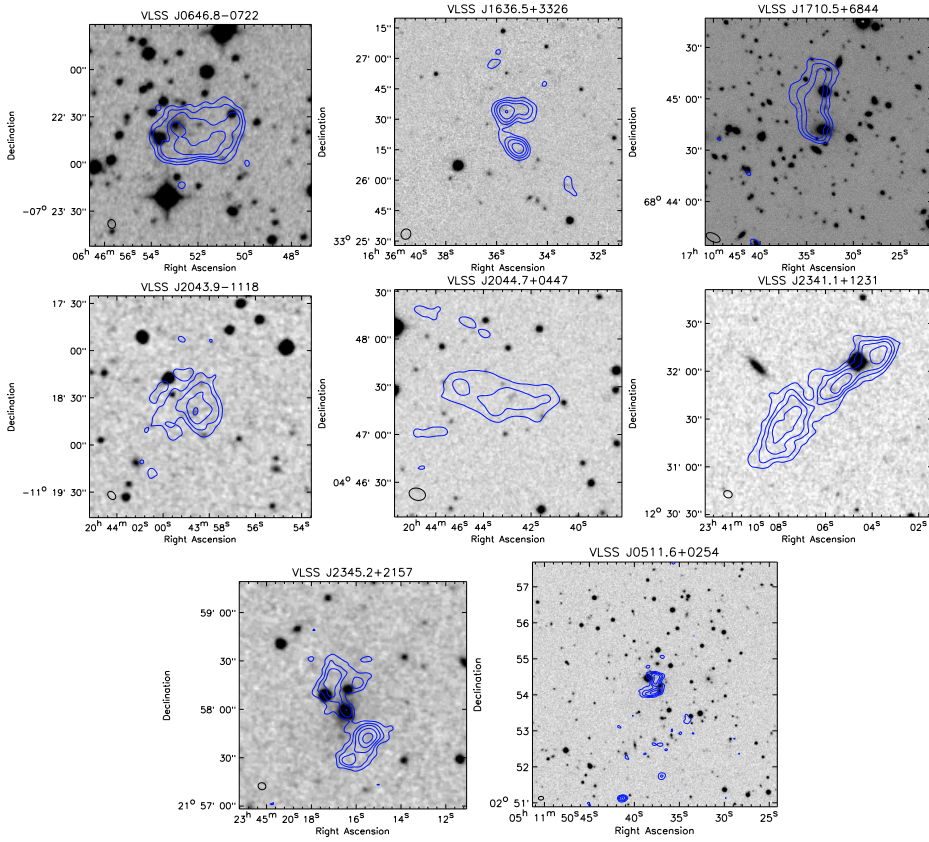


Figure 2.14: Optical images for radio sources with counterparts. Images are from SDSS or POSS-II (red), except for VLSS J1710.5+6844 for which we took seven *i*-band images from the INT Wide Field Camera with a total exposure time of 2520 sec. GMRT 610 MHz contour levels are drawn as in Fig. 2.1 (right panel).