



Universiteit  
Leiden  
The Netherlands

## **The course of clinically suspect arthralgia and early rheumatoid arthritis : clinical features, imaging and genetics**

Steenbergen, H.W. van

### **Citation**

Steenbergen, H. W. van. (2016, November 8). *The course of clinically suspect arthralgia and early rheumatoid arthritis : clinical features, imaging and genetics*. Retrieved from <https://hdl.handle.net/1887/44019>

Version: Not Applicable (or Unknown)

License: [Licence agreement concerning inclusion of doctoral thesis in the Institutional Repository of the University of Leiden](#)

Downloaded from: <https://hdl.handle.net/1887/44019>

**Note:** To cite this publication please use the final published version (if applicable).

Cover Page



Universiteit Leiden



The handle <http://hdl.handle.net/1887/44019> holds various files of this Leiden University dissertation.

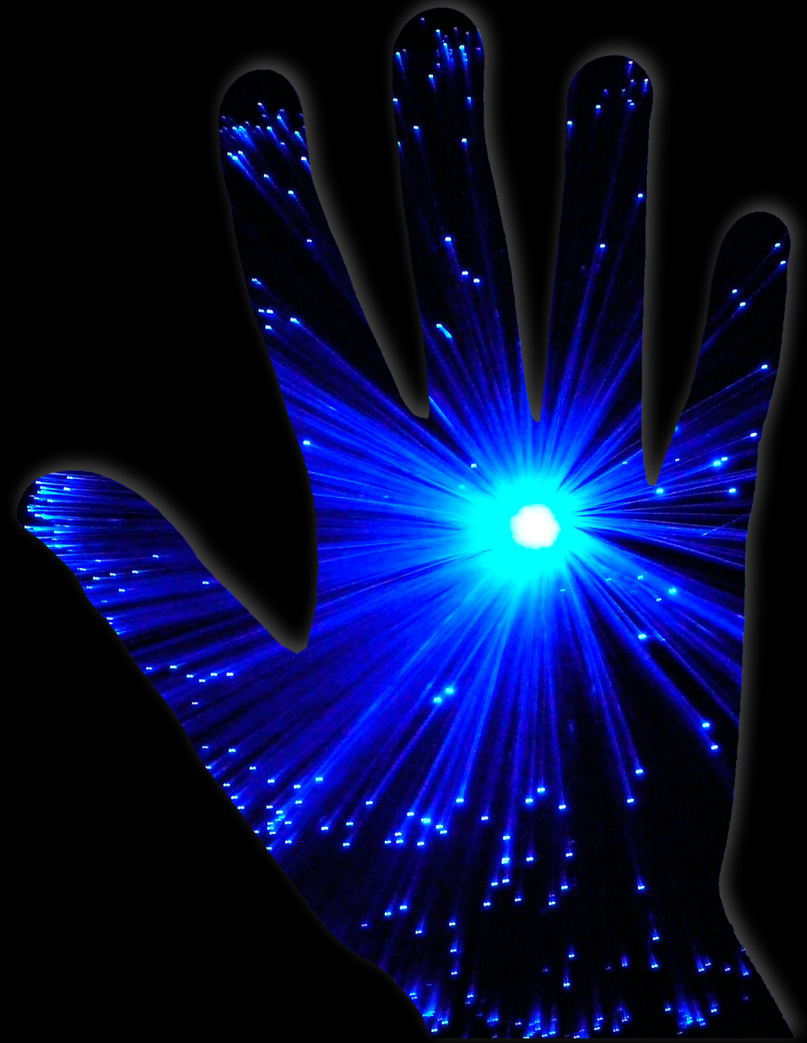
**Author:** Steenbergen, H.W. van

**Title:** The course of clinically suspect arthralgia and early rheumatoid arthritis : clinical features, imaging and genetics

**Issue Date:** 2016-11-08

# The course of Clinically Suspect Arthralgia and early Rheumatoid Arthritis

Clinical features, imaging and genetics



Hanna van Steenbergen

The course of Clinically Suspect Arthralgia and early Rheumatoid Arthritis

Hanna van Steenbergen