



Universiteit  
Leiden  
The Netherlands

## **Social reorientation in adolescence : neurobiological changes and individual differences in empathic concern**

Overgaauw, S.

### **Citation**

Overgaauw, S. (2015, February 19). *Social reorientation in adolescence : neurobiological changes and individual differences in empathic concern*. Retrieved from <https://hdl.handle.net/1887/32031>

Version: Corrected Publisher's Version

License: [Licence agreement concerning inclusion of doctoral thesis in the Institutional Repository of the University of Leiden](#)

Downloaded from: <https://hdl.handle.net/1887/32031>

**Note:** To cite this publication please use the final published version (if applicable).

Cover Page



Universiteit Leiden



The handle <http://hdl.handle.net/1887/32031> holds various files of this Leiden University dissertation

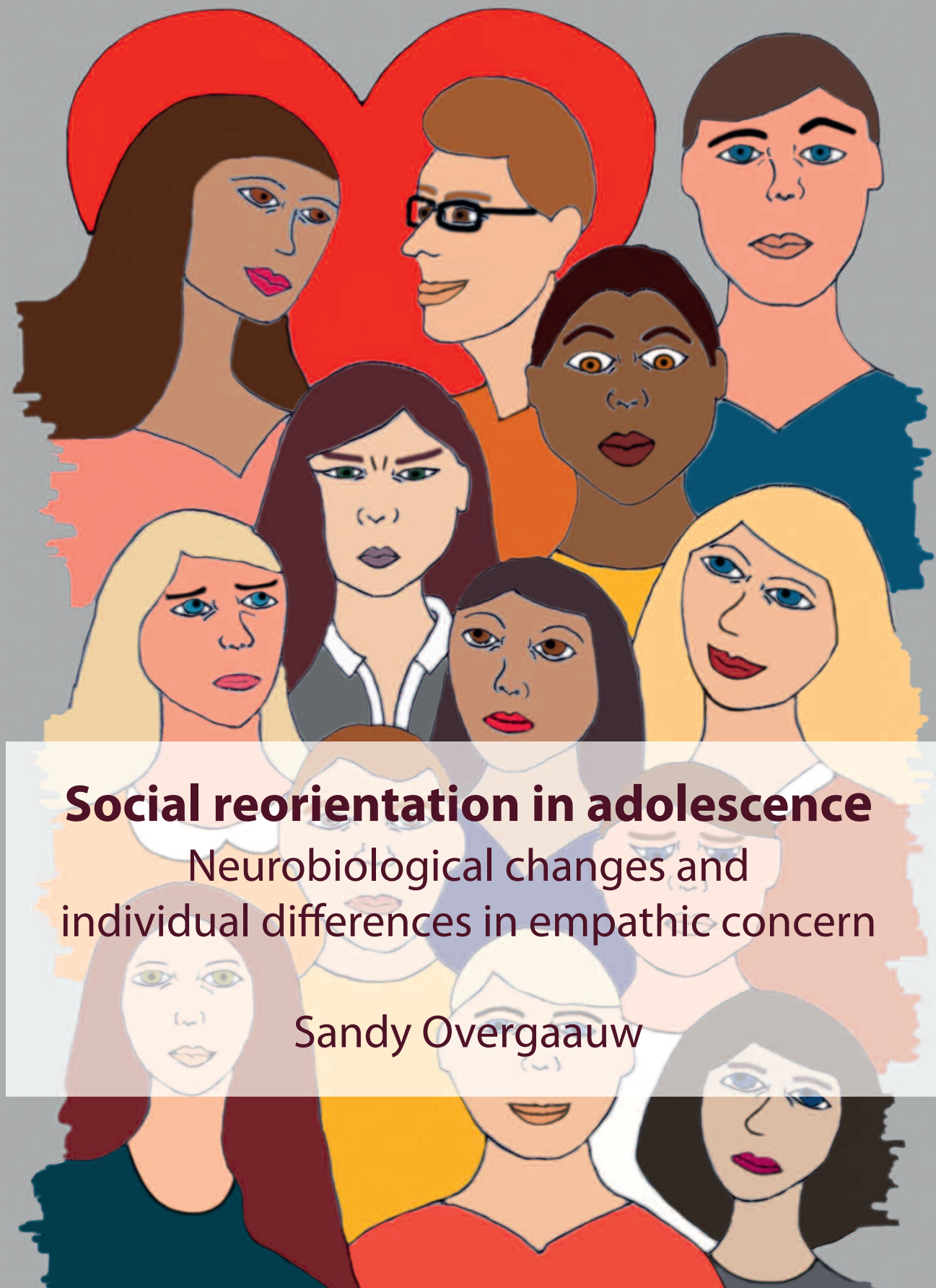
**Author:** Overgaauw, Sandy

**Title:** Social reorientation in adolescence : neurobiological changes and individual differences in empathic concern

**Issue Date:** 2015-02-19



Social reorientation in adolescence



**Social reorientation in adolescence**

Neurobiological changes and individual differences in empathic concern

Sandy Overgaauw

Sandy Overgaauw