



Universiteit
Leiden
The Netherlands

Chemokines in Ewing sarcoma

Sand, L.G.L.

Citation

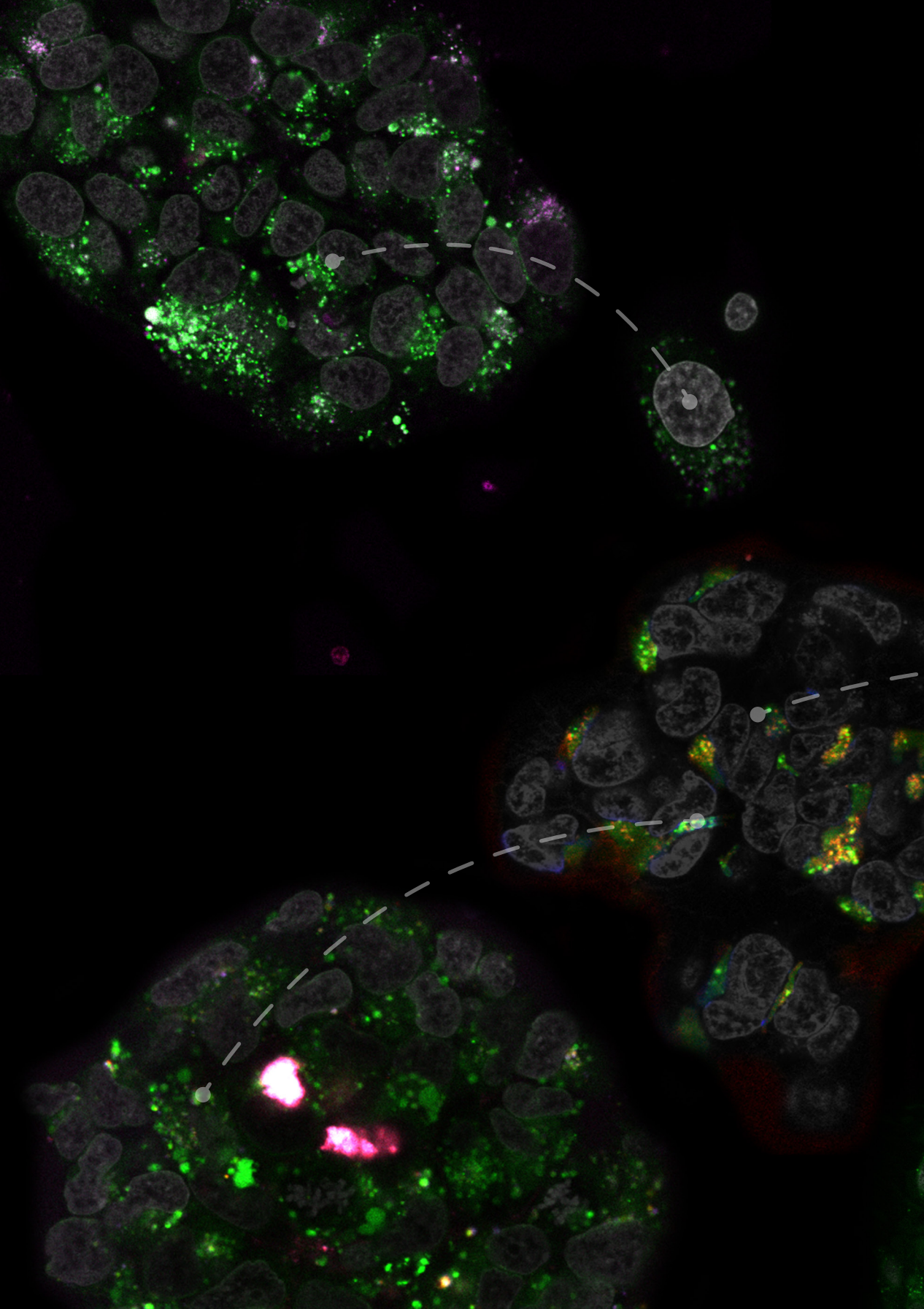
Sand, L. G. L. (2016, October 27). *Chemokines in Ewing sarcoma*. Retrieved from <https://hdl.handle.net/1887/43794>

Version: Not Applicable (or Unknown)

License: [Licence agreement concerning inclusion of doctoral thesis in the Institutional Repository of the University of Leiden](#)

Downloaded from: <https://hdl.handle.net/1887/43794>

Note: To cite this publication please use the final published version (if applicable).



The background of the cover is a fluorescence microscopy image of Ewing sarcoma cells. The cells are stained with a green fluorescent marker, likely highlighting the cytoplasm or nucleus, and a red fluorescent marker, possibly indicating a specific protein or receptor. The cells are arranged in a dense, somewhat organized pattern. A white dashed line with circular markers at intervals traces a path across the image, starting from the top left, curving around the text box, and continuing down the right side and bottom. The text is centered within a white rectangular box.

Chemokines in Ewing sarcoma

Laurens G.L. Sand