



Universiteit  
Leiden  
The Netherlands

## Chemokines in Ewing sarcoma

Sand, L.G.L.

### Citation

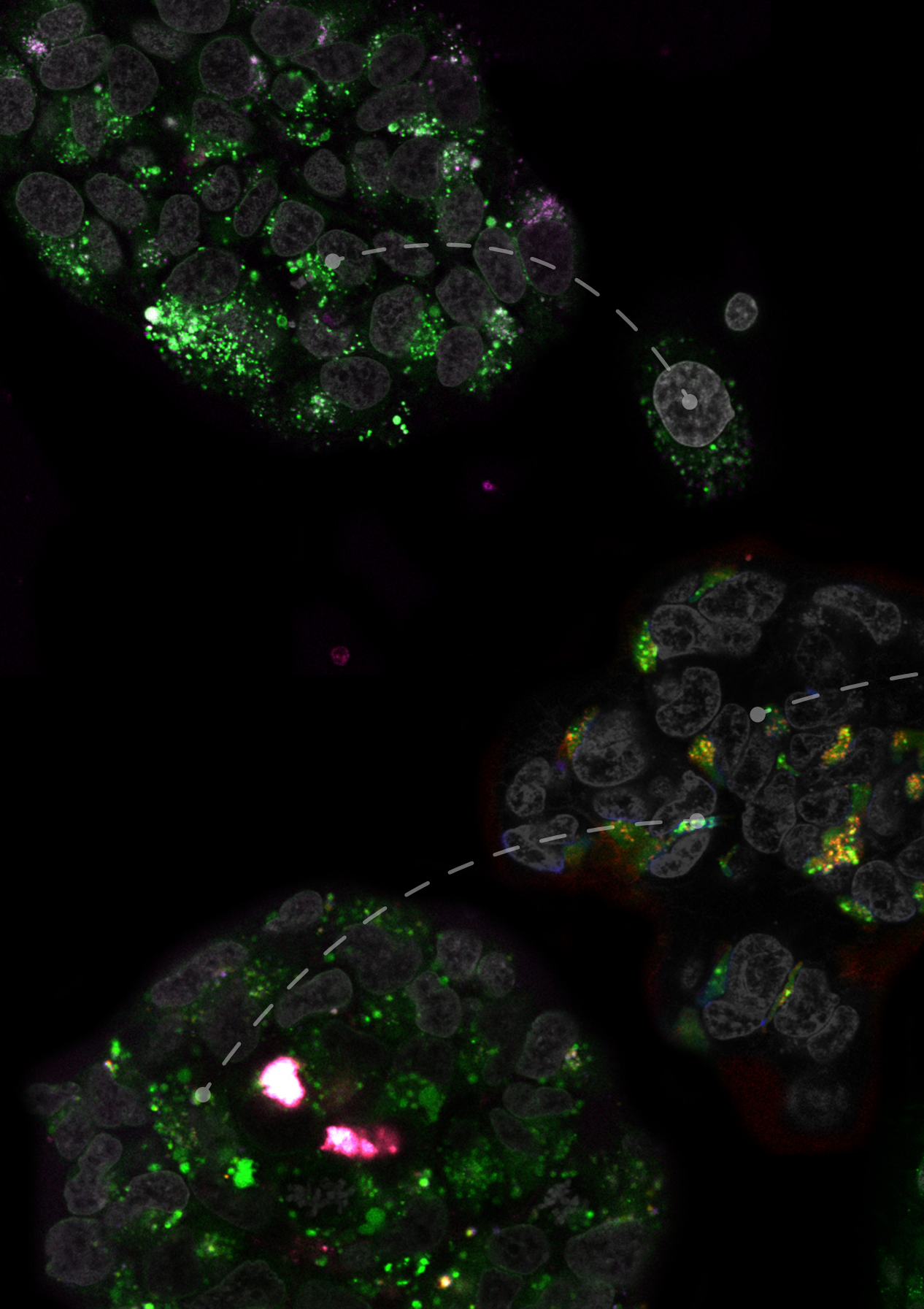
Sand, L. G. L. (2016, October 27). *Chemokines in Ewing sarcoma*. Retrieved from <https://hdl.handle.net/1887/43794>

Version: Not Applicable (or Unknown)

License: [Licence agreement concerning inclusion of doctoral thesis in the Institutional Repository of the University of Leiden](#)

Downloaded from: <https://hdl.handle.net/1887/43794>

**Note:** To cite this publication please use the final published version (if applicable).



The background of the cover is a fluorescence microscopy image of Ewing sarcoma cells. The cells are stained with a green fluorescent marker, likely a chemokine receptor, and a red fluorescent marker, likely a nuclear stain like DAPI. The cells are arranged in a cluster, and the green signal is distributed throughout the cytoplasm and nucleus. The red signal highlights the nuclei. A dashed white line with circular markers at the end of each segment is overlaid on the image, tracing a path through the cells. The title 'Chemokines in Ewing sarcoma' is centered in a white box over the top half of the image.

# Chemokines in Ewing sarcoma

Laurens G.L. Sand