



Universiteit
Leiden
The Netherlands

Novel approaches in clinical development of cannabinoid drugs

Klumpers, L.E.

Citation

Klumpers, L. E. (2014, January 21). *Novel approaches in clinical development of cannabinoid drugs*. Retrieved from <https://hdl.handle.net/1887/23050>

Version: Corrected Publisher's Version

License: [Licence agreement concerning inclusion of doctoral thesis in the Institutional Repository of the University of Leiden](#)

Downloaded from: <https://hdl.handle.net/1887/23050>

Note: To cite this publication please use the final published version (if applicable).

Cover Page



Universiteit Leiden



The handle <http://hdl.handle.net/1887/23050> holds various files of this Leiden University dissertation

Author: Klumpers, Linda

Title: Novel approaches in clinical development of cannabinoid drugs

Issue Date: 2014-01-21

ABSTRACT

AIM Among the main disadvantages of currently available Δ^9 -tetrahydrocannabinol (THC) formulations are dosing difficulties due to poor pharmacokinetic characteristics. Namisol® is a novel THC formulation, designed to improve THC absorption. The study objectives were to investigate the optimal administration route, pharmacokinetics (PK), pharmacodynamics (PD), and tolerability of Namisol®.

METHODS This first in human study consisted of two parts. Panel I included healthy males and females (n = 6/6) in a double-blind, double-dummy, randomised, cross-over study with sublingual (crushed tablet) and oral administration of Namisol® (5 mg THC). Based on these results, male and female (n = 4/5) participants from panel I received oral THC 6.5-, 8.0 mg or matching placebo in a randomised, cross-over, rising dose study during panel II. PD measurements were: body sway; visual analogue scales (VAS) mood, psychedelic; heart rate. THC and 11-OH-THC population PK analysis was performed.

RESULTS Sublingual administration showed a flat concentration profile compared to oral. Oral THC apparent $t_{1/2}$ was 72-80 min, T_{MAX} was 39-56 min, and C_{MAX} 2.92-4.69 ng ml⁻¹. THC affected body sway (60.8%; 95%CI 29.5-99.8), external perception (0.078 log mm; 95%CI 0.019-0.137), alertness (-2.7 mm; 95%CI -4.5/-0.9) feeling high (0.256 log mm; 95%CI 0.093-0.418), and heart rate (5.6 BPM; 95%CI 2.7-6.5). Namisol® was well tolerated.

CONCLUSIONS Oral Namisol® showed promising PK and PD characteristics. Variability and T_{MAX} of THC plasma concentrations were smaller for Namisol® than reported for studies using oral dronabinol and nabilone. This study was performed in a limited number of healthy volunteers. Therefore, future research on Namisol® should study clinical effects in patient populations.

INTRODUCTION

Components of the *Cannabis sativa* L. plant, or cannabis, have been used for medical purposes for thousands of years. Nowadays, cannabis derived compounds, or cannabinoids, are registered in several countries for a variety of indications, including antinociception and muscle relaxation in patients suffering from multiple sclerosis (Ungerleider et al., 1987; Zajicek et al., 2003; Zajicek et al., 2005), and anti-nausea and anti-emetic effects in cancer patients (Chang et al., 1979; Orr et al., 1980; Sallan et al., 1975). Cannabis consists of several cannabinoid compounds, some of which are still subject of clinical research. For the registered products, Δ^9 -tetrahydrocannabinol (THC) is generally considered to be the active compound responsible for the clinical effects (Bucellato et al., 2010; Baker et al., 2000).

THC induces its effects via activation of cannabinoid receptor types 1 and 2 (CB₁ and CB₂) (Alexander et al., 2008). CB₁ are mainly located in the central nervous system, as well as in peripheral tissues such as the heart, adipose tissue and sympathetic ganglions, while CB₂ are mainly present in immune cells (Engeli et al., 2005; Herkenham, 1992; Ishac et al., 1996). The major metabolite of THC is 11-OH-THC (Grotenhermen, 2003). This metabolite induces effects via CB₁ and has been described to be equally or up to seven times as potent as THC (Wilson and May, 1975; Karler and Turkianis, 1987). This could mean that the clinical effects of THC are related to the combined activities of THC and 11-OH-THC.

The common medicinal cannabis administration routes are via smoking, after vaporising, and orally as tea or in baked goods. After smoking, THC plasma levels increase quickly (Huestis et al., 1992). However, smoking is not a very practical route and it can lead to stigmatisation, which may be limiting factors particularly for non-smokers. Also, cannabis, especially when co-administered with tobacco, contains a mixture of other compounds, some of which interact with the effects of THC, and some of which are noxious. Moreover, part of the active substances is not inhaled and will be lost. Also, depth and

frequency of inhalations vary considerably between individuals. This lack of controlled dosing may reduce clinical efficacy or induce side effects and may also occur after vaporisation of cannabis or THC. With regards to oral administration of THC using cannabis tea, a previous study found tea to have a different cannabinoid composition compared to non-decocted cannabis (Hazekamp et al., 2007), affecting the clinical effects. To bypass these problems, methods have been developed to purify THC from cannabis and to formulate it in a stable dosage form.

Marinol® and Cesamet® are two oral THC formulations registered for anorexia in AIDS patients, and nausea and vomiting in cancer patients. Marinol® contains synthetic THC, or dronabinol, and is registered in Germany and the USA. Cesamet® contains nabilone, a THC analogue, and is registered in Canada and the USA. An oromucosal spray containing mainly THC and cannabidiol, a non-psychoactive cannabinoid, is registered in Canada and in some European countries as Sativex® against pain and spasms in MS. Disadvantages of the current administration forms are the long T_{MAX} -values for these formulations, ranging from 1 to 4 hours for Marinol® and Cesamet® (Davis, 2008; Schwilke et al., 2009), and 3.3 to 4.0 hours for Sativex® (Karschner et al., 2011). Long times to reach a maximal concentration can be a disadvantage for on demand symptomatic treatment. Oral dronabinol formulations, such as Marinol®, have variable pharmacokinetics, as peak plasma concentration variations from 150% to 200% were observed in previous studies (Naef et al., 2003; Wall and Perez-Reyes, 1981). This is unfavourable for accurate dose regulation.

In the current study, Namisol® was examined, a novel tablet formulation of pure THC that was produced using Alitra™ (Echo Pharmaceuticals b.v., Nijmegen), an emulsifying drug delivery technology. This technology was designed to improve the uptake of poorly soluble lipophilic compounds, using less surfactant (less than 10% w/w). This is a first in human trial investigating the optimal administration route of Namisol®, the safety, pharmacokinetics,

pharmacodynamics and tolerability. The first objective was to compare the sublingual and oral dosing routes of Namisol® tablets with respect to pharmacodynamic effects and pharmacokinetics of THC and its active metabolite 11-OH-THC and to choose the most favourable administration route. This was decided on factors such as a short time to maximal THC concentration, and a high maximal concentration. The second objective was to use the most favourable administration route in a subsequent dose-ranging study, in order to evaluate the pharmacokinetics and pharmacodynamic effects of different doses. With these objectives, which intend to explore the pharmacokinetic and pharmacodynamic properties of Namisol®, no registered cannabis based medicines were taken as an additional treatment arm in at this early stage of development.

METHODS

Design

The study consisted of two parts. In the first part of the study, the pharmacokinetic differences between oral and sublingual administration, and the most favourable administration route were determined, referred to as 'Panel I'. Panel I had a double blind, double dummy, two-way cross-over design. Panel II referred to the dose-ranging part of the study, which was a randomized, double blind, placebo-controlled, 3-way dose-escalation trial. For both panels, the wash-out period between two treatments was at least two weeks. Subjects were medically screened within 3 weeks before dosing. Subjects had a follow-up visit after the 24-hour PK sample of the last visit of Panel II.

Sample size

This was an explorative study for which no sample size calculation was performed. For Panel I, 12 healthy subjects (6 male, 6 female) were included, and for Panel II, 9 subjects (mixed gender) were included. These numbers are usually sufficient to demonstrate significant dose-related pharmacodynamic effects of THC after inhalation (Zuurman et al., 2008; Bossong et al., 2009). Participants from Panel I were allowed to continue in Panel II.

Inclusion and exclusion criteria

After signing the informed consent form, subjects were medically screened. Subjects were between 18 and 55 years old and had a body mass index between 18.0 and 28.5 kg m⁻² (extremes included). They had to be cannabis users for at least one year, to minimise the risk of

oversensitivity to THC in naive subjects. To prevent pharmacokinetic and pharmacodynamic tolerance, the maximal use was limited to once per week, and subjects were not allowed to have used cannabis from at least two weeks prior to the first treatment period to the end of the last study day. Subjects were not allowed to smoke more than ten cigarettes per day and had to refrain from smoking during study days. Subjects using more than six units of (methyl)xanthine products (e.g. coffee, tea, cola, chocolate) were not included, and subjects had to stop using xanthine containing products from 12 hours prior to dosing until discharge. An irregular diurnal rhythm and consumption of grapefruit (juice) were not allowed from two weeks prior to the first dose until the last study day. Quinine and alcohol use were not allowed from two days prior to dosing until discharge. Use of medication was not allowed from one week prior to dosing until the last study day. Use of illicit drugs were not allowed during the study, and each study day prior to dosing, illicit drug (including cannabis) use was tested using drug screening urine tests. In order to keep a consistent level of sex hormones, female subjects were only included if they used the Nuvaring® or one of the monophasic oral contraceptives, and were able and willing to skip the pill or ring-free week from screening until the end of the study. Pregnant and/or breastfeeding women were excluded, and urinary pregnancy tests were performed prior to study drug administration. The study was approved by the Ethical Review Board of Leiden University Medical Center.

Treatments

Namisol® and matching placebo (Echo Pharmaceuticals b.v., Nijmegen) were administered as 1.5 mg and 5 mg tablets. In Panel I, one tablet (5.0 mg THC), and in Panel II, three tablets (one 5.0 mg and two 1.5 mg tablets active or matching placebos) were used for the administration of 6.5 mg or 8.0 mg THC or placebo respectively. Oral administrations were done

with 200 ml mineral water. Namisol® tablets were not designed for sublingual use. Due to a relatively long in vitro disintegration time of up to 15 minutes of this experimental formulation, tablets were crushed before sublingual administration using Pillmaster (Sell-Plan, Weesp) to increase the surface area of the tablet, and, as a result, improve sublingual absorption. The crushed tablet was then placed under the tongue using cigarette rolling paper.

In Panel I, the following treatments were administered within one minute of $t = 0$: (1) oral Namisol® 5 mg + sublingual matching placebo, (2) sublingual Namisol® 5 mg + oral matching placebo. After Panel I, an interim analysis of safety, pharmacokinetic and pharmacodynamic data was performed. Based on this analysis, the most favourable administration route of Namisol® was selected for Panel II. The dose levels for Panel II were also based on the interim results of Panel I, leading to an oral dose selection of 6.5 mg, 8.0 mg or matching placebo.

Pharmacokinetics

For determination of the plasma concentration of THC and its active metabolite 11-OH-THC, venous blood was collected in EDTA tubes of 4 ml at the following time points: pre dose, 0h11m, 0h30m, 0h45m, 1h00m, 1h30m, and at 2, 3, 4, 6, 8, 12 and 24 hours. The 24-hour blood sample was only drawn in Panel I. After blood collection the tubes were put in ice water in light-shielded containers and were centrifuged within one hour (10 min, 2000g, 4°C). The handling of THC samples was done at low ambient lighting. Plasma samples were stored at a temperature of at least -70 °C and analysed by Analytisch Biochemisch Laboratorium b.v., (Assen) using liquid chromatography/mass spectrometry/mass spectrometry (LC-MS/MS) according to good laboratory practice procedures. The lower limit of quantification for both THC and 11-OH-THC was 0.100 ng/ml.

Pharmacodynamics

Pharmacodynamic measurements were performed in ‘test-blocks’, in a quiet room with subdued lighting, with only one subject in the same room per session. Test-blocks were performed at the following time points: twice pre-dose, 0h15m, 0h32m, 0h47, 1h02m, 1h32m, and at 2 minutes past 2, 3, 4, 6, and 8 hours. Within three weeks before the first occasion, subjects had a training session in order to get acquainted with the pharmacodynamic tests and to minimise learning effects during the study.

BODY SWAY METHODOLOGY

Two-minute measurements of postural stability were performed using a body sway meter as described previously (Zuurman et al., 2008).

VISUAL ANALOGUE SCALES

The Bond and Lader visual analogue scales (VAS) were used to measure subjective alertness, mood, and calmness (Bond and Lader, 1974). The Bowdle VAS of psychedelic effects were performed in order to measure subjective feeling high, and clustered scales that quantify effects on internal and external perception (Bowdle et al., 1998; Zuurman et al., 2008). Internal perception reflects inner feelings that do not correspond with reality, including mistrustful feelings, whereas external perception reflects a misperception of external stimuli or changes in the awareness of the subject’s surroundings. The data were clustered and log transformed, and are expressed as units as described previously (Zuurman et al., 2008).

HEART RATE

Electrocardiogram (ECG) measurements (Cardiofax V equipped with ECAPS12 analysis program, Nihon Kohden) were taken in triplicate after

having been in a supine position for at least 5 min at the following time points: pre-dose, 1h15m and 24h08m (Panel II only). The QT-intervals were corrected for heart rate according to Bazett and Fridericia's QT correction. Blood pressure and heart rate measurements were performed using Nihon-Kohden (BSM-1101K) or Colin (Pressmate BP 8800) automated device after sitting for at least 5 min. Safety heart rate and blood pressure measurements were performed at the following time points: pre-dose, 1h03m and 23h58m (Panel II only). Heart rate measurements that were also recorded as pharmacodynamic endpoints, at time points described in that pertaining section.

Data analysis

As the first part of the study was not placebo-controlled, statistical analysis of safety and pharmacodynamics was performed for both study panels separately. For the pharmacokinetic parameters, all treatments were analysed together. After Panel I, an interim analysis was performed for adverse events, pharmacokinetics and pharmacodynamics, to adapt the design of Panel II.

Non-compartmental pharmacokinetic analysis

Descriptive statistics were calculated for the plasma concentrations of THC, 11-OH-THC, and unbound active moiety (THC + 11-OH-THC) at each time point and for peak plasma concentration (C_{MAX}), time to peak plasma concentration (T_{MAX}), apparent terminal half-life ($t_{1/2}$), and area under the curve from $t = 0$ to infinity ($AUC_{0-\infty}$). Dose-proportionality was assessed for C_{MAX} and $AUC_{0-\infty}$. Pharmacokinetic parameters were compared with a mixed model analysis of variance and reported with 95% confidence intervals around the estimated differences. All effects were considered significant at the 5% level.

Compartmental pharmacokinetic analysis

A population pharmacokinetic model was developed for the most favourable Namisol® formulation, in order to make predictions of pharmacokinetic profiles for further clinical development. Pharmacokinetic modelling was conducted using NONMEM (version 7.1.2). Pharmacokinetics of THC and 11-OH-THC were described using a sequential compartmental modelling approach, which was used previously (Strougo et al., 2008; Zhang et al., 2003). The model part of 11-OH-THC was linked to the individual empirical Bayes estimates determined for the THC pharmacokinetic parameters. Different absorption models were tested, including first-order absorption and transit models, as well as different elimination models, including linear elimination and Michaelis-Menten elimination, which was used in a previous model (Strougo et al., 2008). Model discrimination was performed using the likelihood ratio test, using a difference in objective function values of 6.64 as significance criterion (chi-square test, $\alpha = 0.01$, $df = 1$). All models were also graphically evaluated using goodness of fit plots, depicting individual and population predicted versus observed. Potential model misspecification was assessed using plots of residuals versus time and the dependent variable. Predictive performance of the final models for internal validation was evaluated using a visual predictive check depicting the model simulated distribution together with the observed values versus time.

Pharmacodynamic analyses

Average baseline values per subject and visit for each variable were obtained by calculation of the mean of two baseline assessments. Body sway was log transformed to correct for the log normal distribution. All pharmacodynamic parameters were analysed by mixed model analyses of variance (using SAS PROC MIXED) with subject, subject by treatment

and subject by time as random effects, with gender, treatment, occasion, time, treatment by gender and treatment by time as fixed effects, and the average baseline value was included as covariate. For panel I the contrast oral THC 5 mg versus sublingual THC 5 mg was calculated. For panel II the calculated contrasts were: placebo versus oral 6.5 mg, placebo versus oral 8.0 mg, oral 6.5 mg versus oral 8.0 mg. All effects were considered significant at the 5% level.

RESULTS

Subjects

For Panel I, 14 subjects (7 males and 7 females) were included in order to get 12 complete data sets. Data sets from 13 subjects were used for pharmacodynamic and pharmacokinetic analysis. One subject dropped out after a vasovagal collapse, and one subject for personal circumstances. Four males and five females from Panel I continued the study in Panel II. On average, the subjects were 21.4 years old, and had a body mass index of 21.7 kg m⁻². Demographic details per panel can be found in Table 1.

Adverse effects

All adverse events were of mild to moderate intensity and transitory in nature. A vasovagal syncope occurred during the first occasion, 32 minutes after administration of Namisol® oral 5 mg + Placebo Namisol® sublingual, which was considered to be possibly related to treatment and led to the subject's withdrawal. In Panel I, the frequencies and types of adverse events were similarly distributed over sublingual and oral administration. In Panel II, compared to placebo, more subjects in THC treatment groups had adverse events that were classified as nervous system disorders, especially in the 8.0 mg THC treatment group (9/9 subjects; 6.5 mg THC, 7/9 subjects; placebo, 4/9 subjects), with dizziness as the most frequent adverse event. The same trend was found for the psychiatric disorder class (8.0 mg THC, 5/9; 6.5 mg THC, 3/9; placebo, 0/9), which mainly concerned self reported euphoric mood ('feeling high').

No clinically relevant changes in blood pressure, body temperature, haematology, biochemistry, urinalysis or any of the ECG intervals were found. Heart rate increase after treatment was analysed as a pharmacodynamic parameter.

Noncompartmental pharmacokinetic analysis

Noncompartmental pharmacokinetic parameters of sublingual and oral THC are summarised in Table 2 and the concentration profiles of THC and 11-OH-THC are given in Figure 1. Based on the interim PK analysis, the oral administration route was chosen above the sublingual route. A shorter T_{MAX} and a higher C_{MAX} of oral THC indicated a possibly larger effect with a faster onset compared to sublingual administration. These differences in T_{MAX} and C_{MAX} between oral and sublingual administration were not statistically significant. Sublingual administration showed a significant longer apparent $t_{1/2}$ compared to oral administration (+122 min; 95% CI 64 / 181; $p = 0.0002$). $AUC_{0-\infty}$ and C_{MAX} of oral THC were dose proportional and T_{MAX} and $t_{1/2}$ were similar for all doses.

The difference between pharmacokinetic parameters for oral and sublingual THC 5 mg administration were not significantly different for 11-OH-THC, except for the dose corrected peak concentration (0.30 ng/ml/mg; 95% CI 0.10/0.49; $p = 0.0047$). Pharmacokinetic profiles for oral 5.0-, 6.5-, and 8.0 mg THC were also not different, except for $t_{1/2}$, where 5 mg was shorter than both 6.5- and 8.0 mg (115 min; 95% CI 8 / 222; $p = 0.0366$; and 110 min; 95% CI 3 / 217; $p = 0.0441$ respectively).

Compartmental pharmacokinetic analysis

The two-compartment model for THC pharmacokinetics had first-order absorption, linear elimination and a lag time. A proportional model was used for the residual error. The estimates for clearance and volumes are apparent values, i.e. $CL F^{-1}$ and $V F^{-1}$, since this study had no intravenous administration and therefore absolute bioavailability (F) could not be determined. Peripheral volume of distribution of THC was approximately two times larger than central volume (1780 L vs. 889 L), while the peripheral volume of 11-OH-THC was approximately 19 times larger than the central volume of distribution (1010 L vs. 52.6 L). Inter-individual vari-

ability was estimated for clearance and central volume. THC clearance had a variability of 28.4%. 11-OH-THC had a large variability of clearance of 70.4%. Inter-individual variability of the central volume of distribution was large for THC with 56.3%, and was especially large for 11-OH-THC with 413%. Almost all parameters showed a relative standard error (RSE) that was smaller than 30%. An overview of the pharmacokinetic parameters after oral administration of Namisol® is given in Table 3. Visual predictive checks demonstrated that the predictive performance of the THC and 11-OH-THC models slightly overestimated the variability during wash-out. The visual predictive checks can be found in Figure 2.

The pharmacokinetic model of THC was used for a stochastic simulation of THC and 11-OH-THC concentrations during a multiple dose design of two daily 5 mg THC doses. The graphical representation of this simulation can be found in Figure 3. In this simulation the plasma concentration of THC and 11-OH-THC will not drop below the lower limit of quantification (0.100 ng/ml for both THC and 11-OH-THC) in steady state before the next dose is administered. The accumulation factor of the plasma concentration is 1.02 for THC, and 1.11 for the active metabolite as based on this single dose study.

Pharmacodynamics

Contrasts of pharmacodynamic parameters are summarised in Table 4. As an example of the graphical representation of the pharmacodynamic parameters, the effect of Namisol® on body sway is given in Figure 4. In panel I, oral THC administration gave a statistically significant increase in VAS calmness, compared to sublingual administration. This difference was not considered clinically relevant, as the absolute peak difference was 3 mm on a 100 mm scale. Between oral and sublingual administration, no clinically relevant differences in PD parameters were observed. In panel II, significant increases were found between THC 6.5 mg and placebo on VAS external perception, VAS feeling high, and heart rate. THC 8.0

mg produced a decrease on VAS alertness, and increases on body sway, VAS external perception, VAS feeling high, and heart rate compared to placebo. The THC-effects changed in a dose-dependent way, which was significant for body sway when comparing THC 6.5 mg and 8.0 mg.

DISCUSSION

Available oral THC formulations and cannabis based medicines generally show disadvantageous pharmacokinetics that cause difficulties in dose regulation. Namisol® is a new THC formulation that was developed to achieve a more favourable pharmacokinetic profile. Since pharmacokinetic characteristics of THC ultimately determine its pharmacodynamic features, a fast onset of action and less variable response, as found in this study, are expected to lead to a more rapid and consistent clinical response. This study was designed to investigate two administration routes of Namisol® and three different oral doses of Namisol® in healthy volunteers.

Route of administration

The pharmacokinetic differences after oral and sublingual administration were small. Sublingual administration showed more flat concentration profiles of THC and 11-OH-THC, compared to oral administration, a late and small maximal concentration and a long apparent terminal half-life. This could be explained by a relatively small absorption constant of THC from the oral mucosa into the blood, with an absorption that could be slower than the elimination or distribution. The slow absorption from the oral mucosa after sublingual administration could be caused by the lipophilic character of THC. Furthermore, no in-vitro data are available that support a slow absorption. The more favourable pharmacokinetic profile of the oral tablet compared to the sublingual route implies beneficial pharmacodynamic properties of oral Namisol®, such as an improvement of speed and accuracy of the onset and of the extent of the effects. Therefore, combined with the practical convenience of the administration procedure, the oral administration route was found to be most optimal.

Pharmacokinetics

Oral Namisol® showed a short time to reach maximal THC concentration (39-56 min) compared to reported values in previous studies using oral THC (60-240 min), nabilone (120-240 min), or oral-mucosal THC+CBD (Sativex®, 198-240 min) (Valeant Pharmaceuticals International, 2006; Davis, 2008; Schwilke et al., 2009; Karschner et al., 2011; Naef et al., 2003). Namisol® also had a shorter time to maximal concentration of the active metabolite 11-OH-THC (46-84 min) compared to what has been published for dronabinol (120-204 min) and Sativex® (216-234 min) (Naef et al., 2003; Karschner et al., 2011). Although direct comparative studies are needed to corroborate these findings, the differences seem large enough to be realistic, and to be clinically relevant if the therapeutic effects follow the plasma concentrations reasonably directly. If so, Namisol® could give faster clinical effects compared to other oral formulations with THC or cannabis based medicines that are currently in clinical use. The short time to reach maximal THC and 11-OH-THC concentrations could be explained by a fast absorption of Namisol®. Inter-individual variability of Namisol® parameters was relatively large when compared to THC inhalation, as shown by compartmental analysis on THC pharmacokinetic parameters (Strougo et al., 2008). However, variability of THC maximal concentration was two to five times smaller than reported previously for dronabinol, which was based on non-compartmental analysis (Naef et al., 2003; Wall et al., 1983). This first in human study was primarily intended to explore the pharmacokinetic and pharmacodynamic properties of Namisol®. At this early stage of development therefore, no registered cannabis based medicines were taken as an additional treatment arm. Although there are clear limitations to comparisons with literature data, in summary, the pharmacokinetic properties suggest that THC from Namisol® might have a faster absorption and a less variable maximal concentration. Therefore, pharmacokinetics of Namisol® could be more favourable

than currently registered oral dronabinol formulations and cannabis based medicines.

The pharmacokinetic model that was developed for THC and 11-OH-THC can be used to predict concentration-time profiles of alternative dosing scenarios. Hence, 'what-if' questions that are related to pharmacokinetics can be answered in further clinical development of this compound. Compartmental pharmacokinetic analysis assessed that the apparent terminal half-life of 11-OH-THC was shorter for oral 5.0 mg compared to 6.5 and 8.0 mg. This could be explained by the fact that the concentration after 5.0 mg drops below the lower limit of quantification more rapidly than for higher doses, and this does not necessarily imply that the actual half-life is different for oral than for sublingual administrations. A previous study administering 5 mg of labelled THC intravenously found that THC was still detectable in plasma 72 h after administration (Ohlsson et al., 1982), while in the current study no THC or 11-OH-THC was detected in plasma at 24 h after administration. This confirms our implication that the limitations of the limit of quantification and the time frame of sampling in the current study thwarted an accurate estimation of the half-life of oral and sublingual Namisol®.

Compared with intravenous administration and inhalation, the concentration of the 11-OH metabolite after oral THC administrations from Namisol® was relatively high (Committee for medicinal products for human use, 2010; Valeant Pharmaceuticals International, 2006; Wilson and May, 1975). The ratio of 11-OH-THC:THC (based on peak plasma concentrations) was 1:30 for intravenous administration and 1:7 for inhalation, while this ratio was 1:0.6-0.8 for Namisol® (Naef et al., 2004; Grotenhermen, 2003; Strougo et al., 2008). Previous studies with oral dronabinol and Sativex® also gave a lower metabolite concentration compared to Namisol® (11-OH-THC:THC was 1:1.2-2.0) (Schwilke et al., 2009; Karschner et al., 2011). The relatively high levels of 11-OH-THC compared to the parent compound THC could be explained by several concomitant or alternative factors that could not be identified in this

study. High concentrations of the metabolite suggest that considerable first-pass metabolism is taking place. Considering the absorption rate constant of 0.04 per minute suggested by the PK-model, it is possible that THC stays in the gastro-intestinal tract for a relatively long time where much of it is locally metabolised to 11-OH-THC. The metabolite is then absorbed from the gastrointestinal tract to the blood, where it is not as rapidly distributed to fatty tissues as THC, due to the metabolite's less lipophilic character. At the same time, THC could rapidly disappear from blood into more fatty tissues, leading to low plasma concentrations. Long blood sampling schedules and very low detection thresholds for THC and its metabolites in plasma or mass balance studies would be needed to resolve the complex pharmacokinetics of THC in more detail.

Pharmacodynamics

Although the THC plasma concentrations after oral Namisol® administration were relatively low after completion of Panel I, the pharmacodynamic effects were larger than we had expected, and comparable to those observed in a THC inhalation study in which high peak THC plasma concentrations were found (Zuurman et al., 2008). This could reflect a large pharmacological effect of the 11-OH-metabolite. Preclinical studies have found 11-OH-THC to be a highly potent CB₁-agonist (Karler and Turkani, 1987; Wilson and May, 1975), and clinical studies also reported more rapid and larger effects after 11-OH-THC administration compared to THC (Lemberger et al., 1972; Lemberger, 1973; Lemberger et al., 1973). In itself, this would have allowed us to predict the pharmacodynamic effects of higher doses in Panel II, by reference to the results of other oral THC formulations in the literature which also produce high concentrations of 11-OH-THC. However, quantitative comparisons were quite difficult to make because of differences in methodology and study designs (Curran et al., 2002; Zuurman et al., 2009). Moreover, it was impossible to exclude the

alternative (or additional) explanation that the large pharmacodynamic effects are due to a more efficient absorption of THC from the Namisol® formulation, with rapid redistribution to the CNS during the absorption phase. Since after Panel I we could not be certain about the dose proportionality of Namisol® at higher doses, we decided to continue the study in Panel II with two conservatively small dose increases (to 6.5 and 8 mg) for reasons of safety and tolerability, and to increase the dose further if necessary and possible.

The first pharmacodynamic effects of Namisol® 6.5 and 8.0 mg were already observed during the first assessments, 15 min after dosing. Namisol® had a faster onset of action than reported in a previous study with oral dronabinol (Marinol®), which had an onset of action between 0.5 and 1 hour, and peak effects that were reached between 2 and 4 hours (Solvay Pharmaceuticals, 2004). The time profile of the pharmacodynamic effects was more similar to the concentration curve of 11-OH-THC than that of THC. A previous study reported that 11-OH-THC induces a quicker onset of the pharmacodynamic effects compared to THC (Lemberger et al., 1972; Lemberger, 1973; Lemberger et al., 1973). These results in this study are quite promising for a fast onset of the clinical effects in a patient population, although future studies should carefully investigate the relation between pharmacodynamic effects in healthy volunteers and clinical effects in patients. Also, a more detailed analysis of the CNS-effects of THC and 11-OH-THC should be done in humans to separate the contributions of both compounds to the effects. A future study where the effects of THC are compared with those of 11-OH-THC alone could provide meaningful information about the relative contributions of 11-OH-THC to the CNS-effects of THC and cannabis.

In conclusion, Namisol® is a novel formulation of THC that is well-tolerated and absorbed quickly after ingestion, and reaches peak plasma concentrations within one hour and maximal effects between 1 to 2 hours after Namisol® administration. Compared to the literature on registered dronabinol formulations and cannabis based medicines, these

results imply that Namisol® may also have favourable pharmacokinetic and pharmacodynamic characteristics in patients. Further clinical studies are needed to show that these apparent advantages are also therapeutically relevant.

REFERENCES

- Alexander, S. P., Mathie, A., & Peters, J. A. (2008). Guide to Receptors and Channels (GRAC), 3rd edition. *Br J Pharmacol*, 153 Suppl 2, S1-209.
- Baker, D., Pryce, G., Croxford, J. L., Brown, P., Pertwee, R. G., Huffman, J. W. et al. (2000). Cannabinoids control spasticity and tremor in a multiple sclerosis model. *Nature*, 404, 84-87.
- Bond, A. & Lader, M. (1974). The use of analogue scales in rating subjective feelings. *Br J Med Psychol*, 47, 211-218.
- Bossong, M. G., van Berckel, B. N., Boellaard, R., Zuurman, L., Schuit, R. C., Windhorst, A. D. et al. (2009). Delta 9-tetrahydrocannabinol induces dopamine release in the human striatum. *Neuropsychopharmacology*, 34, 759-766.
- Bowdle, T. A., Radant, A. D., Cowley, D. S., Kharasch, E. D., Strassman, R. J., & Roy-Byrne, R. P. (1998). Psychedelic effects of ketamine in healthy volunteers. Relationship to steady-state plasma concentrations. *Anesthesiology*, 82-88.
- Buccellato, E., Carretta, D., Utan, A., Cavina, C., Speroni, E., Grassi, G. et al. (2010). Acute and chronic cannabinoid extracts administration affects motor function in a CREAE model of multiple sclerosis. *J Ethnopharmacol.*
- Chang, A. E., Shiling, D. J., Stillman, R. C., Goldberg, N. H., Seipp, C. A., Barofsky, I. et al. (1979). Delata-9-tetrahydrocannabinol as an antiemetic in cancer patients receiving high-dose methotrexate. A prospective, randomized evaluation. *Ann. Intern. Med*, 91, 819-824.
- Committee for medicinal products for human use (2010). *Guideline on the investigation of bioequivalence.*
- Curran, H. V., Brignell, C., Fletcher, S., Middleton, P., & Henry, J. (2002). Cognitive and subjective dose-response effects of acute oral Delta 9-tetrahydrocannabinol (THC) in infrequent cannabis users. *Psychopharmacology (Berl.)*, 164, 61-70.
- Davis, M. P. (2008). Oral nabilone capsules in the treatment of chemotherapy-induced nausea and vomiting and pain. *Expert Opin. Investig. Drugs*, 17, 85-95.
- Engeli, S., Bohnke, J., Feldpausch, M., Gorzelniak, K., Janke, J., Batkai, S. et al. (2005). Activation of the peripheral endocannabinoid system in human obesity. *Diabetes*, 54, 2838-2843.
- Grotenhermen, F. (2003). Pharmacokinetics and pharmacodynamics of cannabinoids. *Clin Pharmacokinet*, 42, 327-360.
- Hazekamp, A., Bastola, K., Rashidi, H., Bender, J., & Verpoorte, R. (2007). Cannabis tea revisited: a systematic evaluation of the cannabinoid composition of cannabis tea. *J Ethnopharmacol*, 113, 85-90.
- Herkenham, M. (1992). Cannabinoid receptor localization in brain: relationship to motor and reward systems. *Ann. N.Y. Acad Sci*, 654, 19-32.
- Huestis, M. A., Henningfield, J. E., & Cone, E. J. (1992). Blood cannabinoids. I. Absorption of THC and formation of 11-OH-THC and THC-COOH during and after smoking marijuana. *J Anal. Toxicol*, 16, 276-282.
- Ishac, E. J., Jiang, L., Lake, K. D., Varga, K., Abood, M. E., & Kunos, G. (1996). Inhibition of exocytotic noradrenaline release by presynaptic cannabinoid CB₁ receptors on peripheral sympathetic nerves. *Br J Pharmacol*, 118, 2023-2028.
- Karler, R. & Turkanis, S. A. (1987). Different cannabinoids exhibit different pharmacological and toxicological properties. *NIDA. Res. Monogr.*, 79, 96-107.
- Karschner, E. L., Darwin, W. D., Goodwin, R. S., Wright, S., & Huestis, M. A. (2011). Plasma Cannabinoid Pharmacokinetics following Controlled Oral (Delta)9-Tetrahydrocannabinol and Oromucosal Cannabis Extract Administration. *Clin Chem.*, 57, 66-75.
- Lemberger, L. (1973). Tetrahydrocannabinol metabolism in man. *Drug Metab. Dispos.*, 1, 461-468.
- Lemberger, L., Crabtree, R. E., & Rowe, H. M. (1972). 11-hydroxy-9-tetrahydrocannabinol: pharmacology, disposition, and metabolism of a major metabolite of marijuana in man. *Science*, 177, 62-64.

Lemberger, L., Martz, R., Rodda, B., Forney, R., & Rowe, H. (1973). Comparative pharmacology of Delta9-tetrahydrocannabinol and its metabolite, 11-OH-Delta9-tetrahydrocannabinol. *J. Clin. Invest.*, 52, 2411-2417.

Naef, M., Curatolo, M., Petersen-Felix, S., Arendt-Nielsen, L., Zbinden, A., & Brenneisen, R. (2003). The analgesic effect of oral delta-9-tetrahydrocannabinol (THC), morphine, and a THC-morphine combination in healthy subjects under experimental pain conditions. *Pain*, 105, 79-88.

Naef, M., Russmann, S., Petersen-Felix, S., & Brenneisen, R. (2004). Development and pharmacokinetic characterization of pulmonary and intravenous delta-9-tetrahydrocannabinol (THC) in humans. *J. Pharm. Sci.*, 93, 1176-1184.

Ohlsson, A., Lindgren, J. E., Wahlen, A., Agurell, S., Hollister, L. E., & Gillespie, H. K. (1982). Single dose kinetics of deuterium labelled delta-9-tetrahydrocannabinol in heavy and light cannabis users. *Biomed. Mass. Spectrom.*, 9, 6-10.

Orr, L. E., McKernan, J. F., & Bloome, B. (1980). Antiemetic effect of tetrahydrocannabinol. Compared with placebo and prochlorperazine in chemotherapy-associated nausea and emesis. *Arch. Intern. Med.*, 140, 1431-1433.

Sallan, S. E., Zinberg, N. E., & Frei, E., III (1975). Antiemetic effect of delta-9-tetrahydrocannabinol in patients receiving cancer chemotherapy. *N. Engl. J. Med.*, 293, 795-797.

Schwilke, E. W., Schwoppe, D. M., Karschner, E. L., Lowe, R. H., Darwin, W. D., Kelly, D. L. et al. (2009). Delta9-Tetrahydrocannabinol (THC), 11-Hydroxy-THC, and 11-NOR-9-CARBOXY-THC Plasma Pharmacokinetics during and after Continuous High-Dose oral THC. *Clinical Chemistry*, 55, 2180-2189.

Solvay Pharmaceuticals (2004). *Summary of Product Characteristics Marinol*, <http://www.fda.gov/ohrms/dockets/dockets/0510479/05N-0479-emc0004-04.Pdf>.

Strougo, A., Zuurman, L., Roy, C., Pinquier, J. L., van Gerven, J. M., Cohen, A. F. et al. (2008). Modelling of the concentration-effect relationship of THC on central nervous system parameters and heart rate - insight into its mechanisms of action and a tool for clinical research and development of cannabinoids. *J Psychopharmacol*, 22, 717-726.

Ungerleider, J. T., Andrysiak, T., Fairbanks, L., Ellison, G. W., & Myers, L. W. (1987). Delta-9-THC in the treatment of spasticity associated with multiple sclerosis. *Adv. Alcohol. Subst. Abuse.*, 7, 39-50.

Valeant Pharmaceuticals International (2006). Cesamet Package Insert. <http://dailymed.nlm.nih.gov/dailymed/drugInfo.cfm?id=13020> [On-line].

Wall, M. E. & Perez-Reyes, M. (1981). The metabolism of delta-9-tetrahydrocannabinol and related cannabinoids in man. *J. Clin. Pharmacol.*, 21, 178S-189S.

Wall, M. E., Sadler, B. M., Brine, D., Taylor, H., & Perez-Reyes, M. (1983). Metabolism, disposition, and kinetics of delta-9-tetrahydrocannabinol in men and women. *Clin Pharmacol Ther.*, 34, 352-363.

Wilson, R. S. & May, E. L. (1975). Analgesic properties of the tetrahydrocannabinols, their metabolites, and analogs. *J. Med. Chem.*, 18, 700-703.

Zajicek, J., Fox, P., Sanders, H., Wright, D., Vickery, J., Nunn, A. et al. (2003). Cannabinoids for treatment of spasticity and other symptoms related to multiple sclerosis (CAMS study): multicentre randomised placebo-controlled trial. *Lancet*, 362, 1517-1526.

Zajicek, J. P., Sanders, H. P., Wright, D. E., Vickery, P. J., Ingram, W. M., Reilly, S. M. et al. (2005). Cannabinoids in multiple sclerosis (CAMS) study: safety and efficacy data for 12 months follow up. *J Neurol. Neurosurg. Psychiatry*, 76, 1664-1669.

Zhang, L., Beal, S. L., & Sheiner, L. B. (2003). Simultaneous vs. sequential analysis for population PK/PD data I: best-case performance. *J Pharmacokinetic. Pharmacodyn.*, 30, 387-404.

Zuurman, L., Ippel, A. E., Moin, E., & van Gerven, J. M. A. (2009). Biomarkers for the effects of cannabis and THC in healthy volunteers. *Br J Clin Pharmacol*, 67, 5-21.

Zuurman, L., Roy, C., Schoemaker, R., Hazekamp, A., den Hartigh, J., Bender, J. et al. (2008). Effect of intrapulmonary tetrahydrocannabinol administration in humans. *J Psychopharmacol*, 22, 707-716.

TABLE 1 Summary of subject demographics of Panel I and Panel II

	Variable	N	Mean	Std	Min	Max
PANEL I	Gender (M:F)	7:7				
	Age (yrs)	14	21.4	3.3	18	27
	BMI (kg m ⁻²)	14	21.71	1.52	18.4	24.5
	Height (m)	14	1.783	0.103	1.62	1.96
	Weight (kg)	14	69.09	10.13	55.3	90.1
PANEL II	Gender (M:F)	4:5				
	Age (yrs)	9	21.9	3.8	18	27
	BMI (kg m ⁻²)	9	22.31	0.97	21.1	24.5
	Height (m)	9	1.766	0.099	1.62	1.91
	Weight (kg)	9	69.70	8.91	55.3	80.6

TABLE 2 Pharmacokinetic parameters of THC and 11-OH-THC after sublingual and oral administration of Namisol®. All data are presented as means with coefficient of variation (%).

Panel	I (n=13)	I (n=13)	II (n=9)	II (n=9)
Parameter	5.0 mg sublingual	5.0 mg oral	6.5 mg oral	8.0 mg oral
THC				
C _{max} (ng ml ⁻¹)	2.30 (44)	2.92 (51)	4.43 (42)	4.69 (62)
T _{max} (min)	74.5 (52)	56.0 (73)	39.3 (20)	43.6 (26)
AUC _{0-∞} (ng.min ml ⁻¹)	235.8 (47)	188.7 (40)	286.6 (36)	377.2 (46)
t _{1/2} (min)	252.9 (98)	71.9 (24)	80.0 (22)	78.8 (21)
11-OH-THC				
C _{max} (ng ml ⁻¹)	3.08 (42)	4.68 (42)	5.94 (44)	6.10 (53)
T _{max} (min)	83.6 (63)	74.1 (68)	46.1 (28)	78.4 (63)
AUC _{0-∞} (ng.min ml ⁻¹)	522.9 (50)	648.1 (49)	848.7 (42)	1087.3 (50)
t _{1/2} (min)	279.0 (51)	196.0 (33)	318.7 (54)	314.1 (58)

* C_{max} and AUC_{0-∞} were dose-corrected for treatment p-value calculation
C_{max}=peak plasma concentration; T_{max}=time to peak plasma concentration;
AUC_{0-∞}=area under the curve from t=0 to infinity; t_{1/2}= apparent terminal half-life.

TABLE 3 THC population pharmacokinetic parameters after oral Namisol®.

Parameter	THC		11-OH-THC	
	Estimate (RSE)	IIV	Estimate (RSE)	IIV
Clearance/F (L min ⁻¹)*	26.5 (10.6)	28.4	9.53 (25)	70.4
Central volume of distribution/F (L)*	889 (22.5)	56.3	52.6 (47.9)	413
Peripheral volume of distribution/F (L)*	1790 (21.9)	-	1010 (15.3)	21.1
Intercompartmental clearance/F (L min ⁻¹)*	13.3 (17)	-	4.46 (34.5)	50.7
Absorption rate constant (min ⁻¹)	0.0401 (22)	-	-	-
Proportional residual error (SD mean ⁻¹)	0.509 (8)	-	0.461 (6.2)	-
Absorption lag time (min)	11.5 (0.9)	-	-	-

* This parameter is an apparent parameter as bioavailability could not be calculated.

RSE = relative standard error (%); IIV=inter-individual variability (coefficient of variation, %).

TABLE 4 Pharmacodynamic effects after Namisol® dosing. Treatment differences are given in estimated differences of least square means with 95% confidence intervals and p-values. Log transformed VAS (scores in mm + 2) are given in units (U).

Panel	I (n=13)	II (n=9)	II (n=9)	II (n=9)
Parameter	5.0 mg oral vs 5.0 mg sublingual	6.5 mg oral vs placebo	8.0 mg oral vs placebo	8.0 mg vs 6.5 mg oral
Body sway (%)	7.66 (-4.62, 21.53) p=0.2037	22.06 (-1.05, 50.57) p=0.0610	60.82 (29.46, 99.79) p=0.0003*	31.76 (6.53, 62.96) p=0.0145*
VAS Alertness (mm)	-0.3 (-2.0, 1.5) p=0.7124	-1.4 (-3.2, 0.4) p=0.1161	-2.7 (-4.5, -0.9) p=0.0057*	-1.3 (-3.1, 0.5) p=0.1390
VAS Mood (mm)	0.8 (-0.1, 1.6) p=0.0653	0.1 (-0.3, 0.5) p=0.5357	0.2 (-0.2, 0.6) p=0.3686	0.1 (-0.4, 0.5) p=0.7815
VAS Calmness (mm)	1.8 (0.1, 3.5) p=0.0443*	0.7 (-0.1, 1.4) p=0.0665	0.5 (-0.2, 1.2) p=0.1246	-0.1 (-0.9, 0.6) p=0.7080
VAS Feeling high (U)	0.111 (-0.042, 0.265) p=0.1347	0.229 (0.073, 0.384) p=0.0071*	0.256 (0.093, 0.418) p=0.0044*	0.027 (-0.129, 0.183) p=0.7145
VAS External perception (U)	0.037 (-0.017, 0.090) p=0.1482	0.061 (0.002, 0.121) p=0.0446*	0.078 (0.019, 0.137) p=0.0141*	0.017 (-0.042, 0.076) p=0.5507
VAS Internal perception (U)	0.006 (-0.014, 0.026) p=0.5247	0.013 (-0.003, 0.029) p=0.1057	0.002 (-0.015, 0.019) p=0.8312	-0.011 (-0.028, 0.005) p=0.1632
Heart rate (BPM)	0.2 (-3.6, 4.0) p=0.9261	5.3 (2.4-8.2) p=0.0019*	5.6 (2.7-8.5) p=0.0014*	0.3 (-2.7, 3.2) p=0.8524

* Statistically significant values

FIGURE 1 THC (A) and 11-OH-THC (B) concentrations after sublingual 5.0 mg and oral 5.0-, 6.5- and 8.0 mg Namisol® administration as estimated with a mixed model. Closed circles are sublingual THC 5 mg, open circles are oral THC 5.0 mg, triangles are oral THC 6.5 mg, and squares are oral THC 8.0 mg. Error bars represent standard deviations.

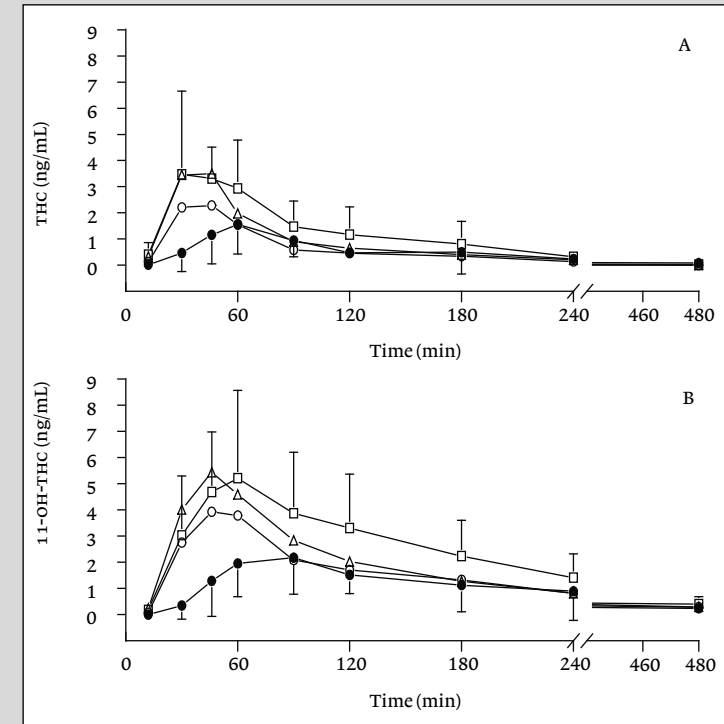


FIGURE 2 Visual predictive checks of THC concentrations after THC 5.0-, 6.5-, and 8.0 mg (figures A, B and C), and of 11-OH-THC concentrations (figures D, E, and F). Lower limit of quantification for THC and 11-OH-THC is 0.1 ng/mL.

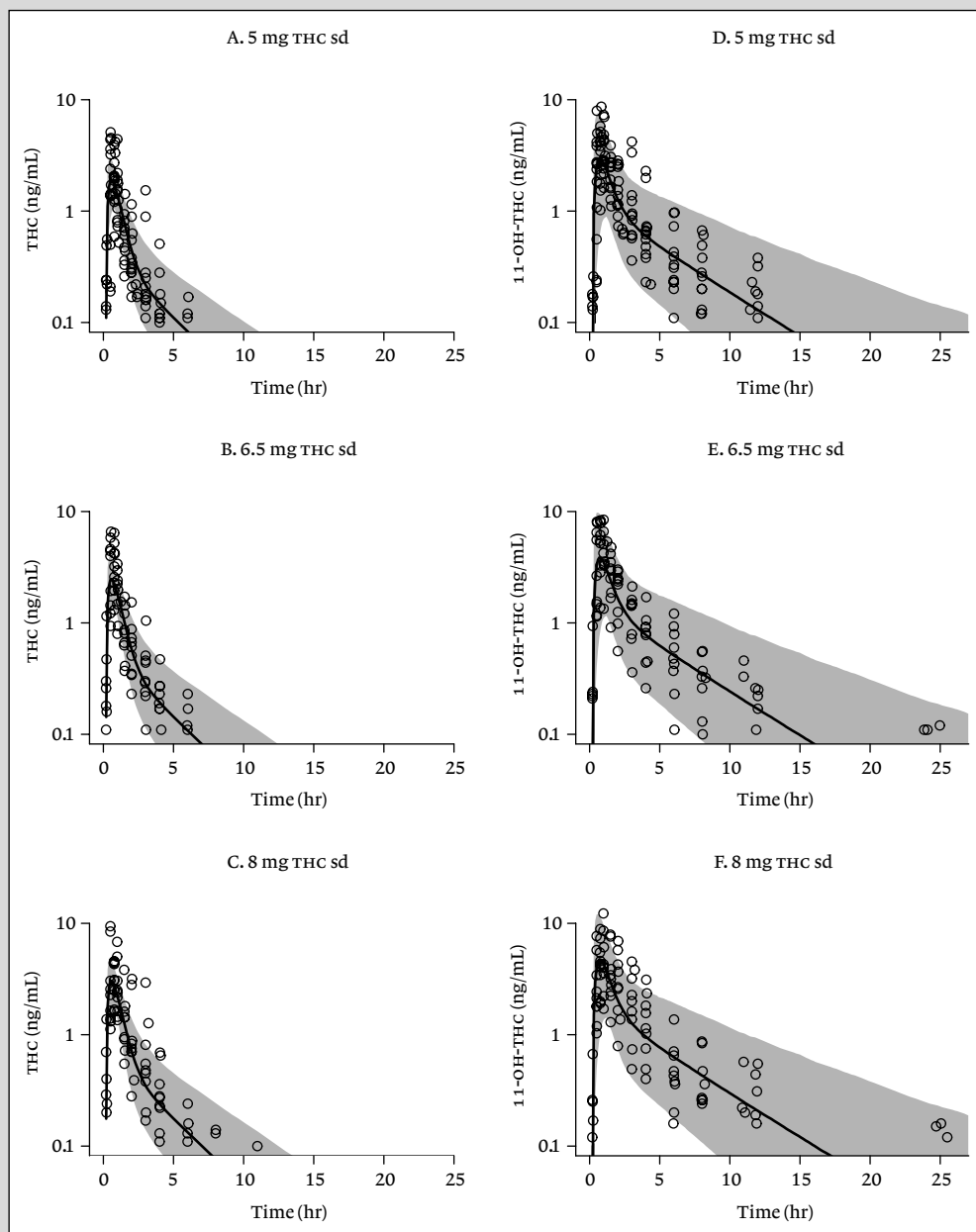


FIGURE 3 Stochastic simulations (n=2000) of concentrations of THC after a single 5 mg dose (A), and after 21 dosages, 5 mg two times per day (B) and simulations of 11-OH-THC concentrations after a single 5 mg dose (C), and after 21 dosages, 5 mg two times per day (D). Sd = single dose; bid = two doses per day.

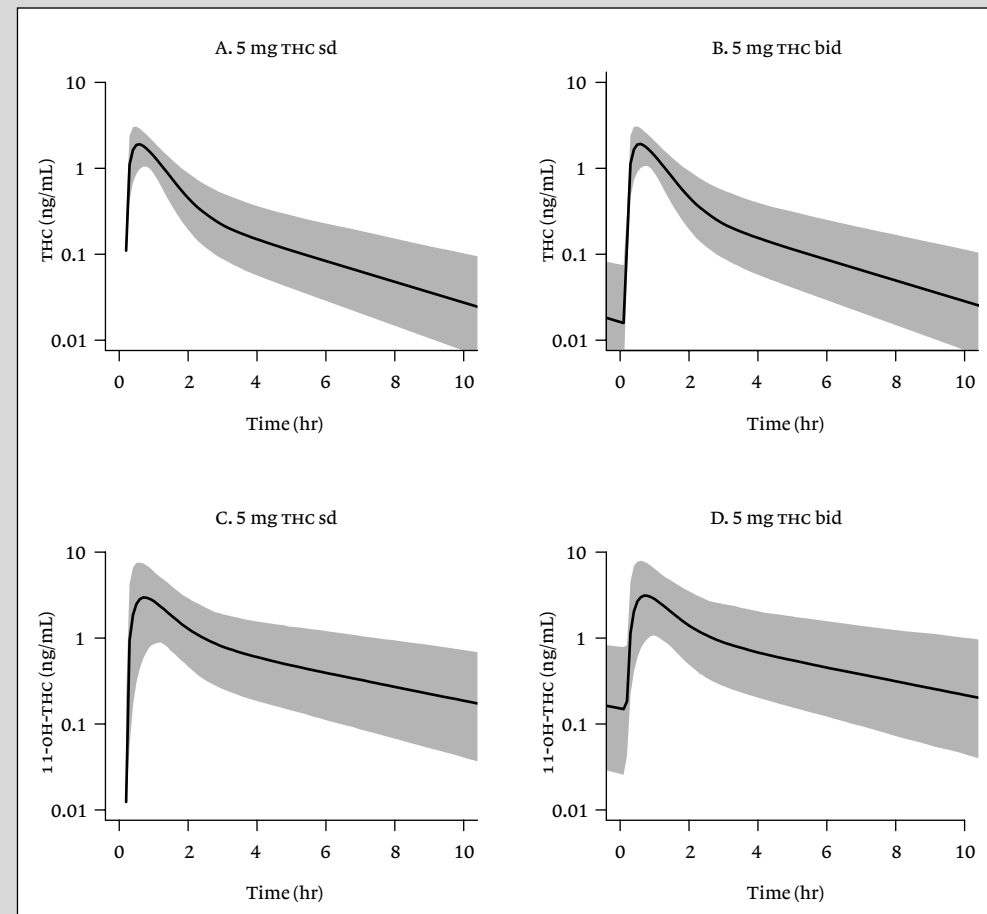


FIGURE 4 Effect-time profiles of baseline corrected body sway least square means in %, with 95% confidence interval error bars. Figure A shows the results from Panel I of the study, including sublingual THC 5.0 mg as closed circles, and oral THC 5.0 mg as open circles. Figure B has the results of Panel II, with oral THC 6.5 mg as triangles, and oral THC 8.0 mg as squares.

