



Universiteit  
Leiden  
The Netherlands

## **From Pediatric Covariate Model to Semiphysiological Function for Maturation: Part II-Sensitivity to Physiological and Physicochemical Properties.**

Krekels, E.H.J.; Johnson, T.N.; Hoedt, S.M. den; Rostami-Hodjegan, A.; Danhof, M.; Tibboel, D.; Knibbe, C.A.J.

### **Citation**

Krekels, E. H. J., Johnson, T. N., Hoedt, S. M. den, Rostami-Hodjegan, A., Danhof, M., Tibboel, D., & Knibbe, C. A. J. (2012). From Pediatric Covariate Model to Semiphysiological Function for Maturation: Part II-Sensitivity to Physiological and Physicochemical Properties. *Cpt: Pharmacometrics & Systems Pharmacology*, 2012(1), e10.  
doi:10.1038/psp.2012.12

Version: Not Applicable (or Unknown)

License: [Leiden University Non-exclusive license](#)

Downloaded from: <https://hdl.handle.net/1887/45565>

**Note:** To cite this publication please use the final published version (if applicable).

ORIGINAL ARTICLE

# From Pediatric Covariate Model to Semiphysiological Function for Maturation: Part II—Sensitivity to Physiological and Physicochemical Properties

EHJ Krekels<sup>1,2</sup>, TN Johnson<sup>3</sup>, SM den Hoedt<sup>1</sup>, A Rostami-Hodjegan<sup>3,4</sup>, M Danhof<sup>1</sup>, D Tibboel<sup>2</sup> and CAJ Knibbe<sup>1,2,5</sup>

To develop a maturation function for drug glucuronidation in children, that can be used in population and physiologically based modeling approaches, the physiological and physicochemical basis of a semiphysiological glucuronidation function for children was untangled using Simcyp. The results show that using the currently available *in vitro* data, *in vivo* morphine and zidovudine clearances were under predicted by the physiologically based model in Simcyp. The maturation profile was similar to the clinically observed profile except for the first 2 weeks of life, and liver size and UGT2B7 ontogeny are the physiological drivers of the maturation of glucuronidation. Physicochemical drug parameters did not affect this maturation profile, although log P and  $pK_a$  influenced the absolute value of clearance. The results suggest that the semiphysiological glucuronidation function for young children can be used to predict the developmental clearance profile of other UGT2B7 substrates, though scenarios with nonlinear kinetics and high-extraction ratios require further investigation.

CPT: Pharmacometrics & Systems Pharmacology (2012) 1, e10; doi:10.1038/psp.2012.12; advance online publication 10 October 2012

Despite the multifactorial nature of the ontogeny of drug clearance, pediatric population models describe net observed changes in ontogeny with a limited number of covariate relationships. Therefore, these models are only applicable to specific drugs in a specified population, requiring collection and full analysis of the same type of data for every drug in every population. Physiologically based (PB) pharmacokinetic (PK) models use *in vitro* data on drug kinetics in combination with anatomical measurements and physiological parameters to quantify physiological processes and the interaction of a molecule with certain physicochemical properties with this system. The system-specific parameters in PBPK models are not restricted to specific drugs, making these models more generalizable and useful for selecting first-in-child doses for new compounds in drug development. Only rarely has PBPK modeling, known as “bottom-up approach”, been combined with population PK modeling, known as “top-down approach”, to augment each other in a semiphysiological “middle out approach”.

Previous studies on the UGT2B7-mediated glucuronidation of morphine and zidovudine (see Part I of this article, ref. 1) and the glomerular filtration of antibiotics<sup>2</sup> suggest that pediatric population covariate models for clearance contain biological system-specific rather than drug-specific information and that this system-specific information can be extrapolated between drugs that share elimination pathways. In such semiphysiological PK modeling approaches, the ease of analyzing outcome measures with population PK modeling is combined with the mechanistic insight of PBPK modeling.

In this study, the physiological and physicochemical basis of the semiphysiological covariate function for UGT2B7-mediated glucuronidation in children younger than 3 years (see Part I of this article, ref. 1) is investigated. To define

preconditions for the use of this semiphysiological function, the influence of system- and drug-specific parameters on the net maturation pattern of *in vivo* UGT2B7-mediated glucuronidation was investigated. This information is used to identify both patient and drug characteristics that potentially limit the applicability of the semiphysiological glucuronidation function. In addition, the results obtained can be used to establish the information that can be provided by population pediatric covariate models for maturation functions of elimination pathways in PBPK models.

## RESULTS

### System-specific parameters

**Table 1** presents the changes in parameter values of liver blood flow, liver volume, milligram protein per gram of liver, UGT2B7 ontogeny, and unbound drug fraction in the first 3 years of life according to the pediatric PBPK model in Simcyp in five age-categories. In addition, the sensitivity of *in vivo* clearance to these changes is quantified as a sensitivity ratio, with a ratio of 0.80 indicating that a 10% increase in the parameter value would increase clearance by 8%. Finally, the percentage change in *in vivo* clearance as a result of the changes in the underlying system-specific parameters is presented. It is shown that the contribution of each system-specific parameter to the developmental changes in clearance is different for morphine and zidovudine. With respect to the different age groups, the contribution of the parameters to developmental changes in clearance is highly nonlinear and may even be bidirectional. Despite this, liver volume can overall be regarded as the main driver of developmental changes in UGT2B7-mediated glucuronidation, causing an

<sup>1</sup>Division of Pharmacology, Leiden/Amsterdam Center for Drug Research, Leiden, The Netherlands; <sup>2</sup>Department of Pediatric Intensive Care and Pediatric Surgery, Erasmus MC-Sophia Children's Hospital, Rotterdam, The Netherlands; <sup>3</sup>Simcyp Limited, Blades Enterprise Centre, Sheffield, UK; <sup>4</sup>School of Pharmacy and Pharmaceutical Sciences, University of Manchester, Manchester, UK; <sup>5</sup>Department of Clinical Pharmacy, St. Antonius Hospital, Nieuwegein, The Netherlands. Correspondence: CAJ Knibbe (c.knibbe@antoniuziekenhuis.nl)

Received 10 July 2012; accepted 23 August 2012; advance online publication 10 October 2012. doi:10.1038/psp.2012.12

**Table 1** System-specific parameters investigated in this study. The percentage increase in parameter value in each of the five age groups (I–V) and the mean sensitivity ratios of the clearance of morphine and zidovudine in each group is provided. The calculated percentage change in *in vivo* morphine and zidovudine clearance as a result of the change in the underlying system-specific parameters are also presented

System-specific model parameter	Developmental change in parameter value for each age group according to the physiologically based model		Mean sensitivity ratio <sup>a</sup> of <i>in vivo</i> drug clearance to the changes in the model parameters for each age group		Mean net change in <i>in vivo</i> clearance as a result of developmental changes in parameters for each age group	
			Morphine	Zidovudine	Morphine	Zidovudine
Liver volume	I: 38%		I: 0.82	I: 0.58	I: 31%	I: 22%
	II: 18%		II: 0.81	II: 0.56	II: 15%	II: 10%
	III: 19%		III: 0.79	III: 0.50	III: 15%	III: 9.5%
	IV: 17%		IV: 0.76	IV: 0.43	IV: 13%	IV: 7.3%
	V: 21%		V: 0.72	V: 0.35	V: 15%	V: 7.4%
UGT2B7 ontogeny	I: 12.7%		I: 0.90	I: 0.66	I: 11%	I: 8.4%
	II: 11.4%		II: 0.90	II: 0.65	II: 10%	II: 7.4%
	III: 20.2%		III: 0.88	III: 0.60	III: 18%	III: 12%
	IV: 33.8%		IV: 0.85	IV: 0.52	IV: 29%	IV: 18%
	V: 25.2%		V: 0.81	V: 0.45	V: 20%	V: 11%
Hepatic blood flow	I: 33%		I: 0.059	I: 0.24	I: 1.9%	I: 7.9%
	II: 17%		II: 0.061	II: 0.22	II: 1.0%	II: 3.7%
	III: 19%		III: 0.081	III: 0.29	III: 1.5%	III: 5.5%
	IV: 22%		IV: 0.103	IV: 0.22	IV: 2.3%	IV: 4.8%
	V: 24%		V: 0.127	V: 0.29	V: 3.0%	V: 7.0%
Milligram microsomal protein per gram of liver	I: 0.71%		I: 0.83	I: 0.62	I: 0.6%	I: 0.4%
	II: 0.70%		II: 0.83	II: 0.60	II: 0.6%	II: 0.4%
	III: 1.63%		III: 0.81	III: 0.55	III: 1.3%	III: 0.9%
	IV: 3.3%		IV: 0.78	IV: 0.47	IV: 2.6%	IV: 1.6%
	V: 3.1%		V: 0.75	V: 0.39	V: 2.3%	V: 1.2%
Unbound drug fraction	Morphine	Zidovudine				
	I: -1.6%	I: -0.93%	I: 0.92	I: 0.71	I: -1.5%	I: -0.66%
	II: -0.72%	II: -0.45%	II: 0.92	II: 0.70	II: -0.67%	II: -0.32%
	III: -1.5%	III: -0.89%	III: 0.90	III: 0.65	III: -1.4%	III: -0.58%
	IV: -0.05%	IV: -0.008%	IV: 0.87	IV: 0.58	IV: -0.04%	IV: -0.005%
	V: 1.2%	V: 0.74%	V: 0.85	V: 0.51	V: 1.02%	V: 0.38%

Age groups: I, 0–3 months; II, 3–6 months; III, 6–12 months; IV, 1–2 years; V, 2–3 years.

<sup>a</sup>Sensitivity ratio, ratio of difference in *in vivo* drug clearance and difference in model parameter value for each individual.

increase in clearance in the different age groups between 13 and 31% for morphine and 7.3 and 22% for zidovudine, with an especially large contribution in the first 3 months of life. The increase in morphine and zidovudine clearance as a result of UGT2B7 ontogeny in the different age groups ranges between 10 and 29% and 7.4 and 18%, respectively. The influence of hepatic blood flow on developmental changes in morphine clearance is <5% in all age groups and can be regarded negligible, whereas for zidovudine, the contribution of changes in hepatic blood flow to increases in clearance ranges between 3.7 and 7.9%. For both drugs, the contribution of changes in milligram protein per gram of liver and unbound drug fraction is negligible in all age groups.

### Drug-specific parameters

Simulations with hypothetical small-molecular UGT2B7 substrates (Table 2) revealed that the physicochemical drug properties such as molecular weight, octanol/water partition

coefficient (log P), and acid dissociation constant ( $pK_a$ ) do not influence the ontogeny profile of *in vivo* UGT2B7-mediated glucuronidation. Assuming that the changes in mass did not alter the uptake or efflux by hepatocytes or the interaction with the UGT2B7 isoenzyme, molecular mass in the range between 100 and 1,000 g/mol did not influence this clearance at all. Increasing log P between 0.01 and 5.5 yielded a slight decreasing trend in the predicted clearance, whereas increasing the  $pK_a$  between 2 and 12 yielded an increasing trend in predicted clearance. No strong relationship was observed between the physicochemical properties of the hypothetical drugs and the clearance, nor was there a relationship between the derived blood to plasma ratio and clearance. There was, however, a strong linear correlation ( $r = 0.978$ ) between the clearance predicted by the PBPK model and the unbound drug fraction of the hypothetical drug in plasma, which was derived from the log P and  $pK_a$  value using the Simcyp toolbox. According to this relationship, every 0.1 increase in unbound

**Table 2** Drug-specific parameters for morphine, zidovudine, and hypothetical drugs used in the physiologically based simulations

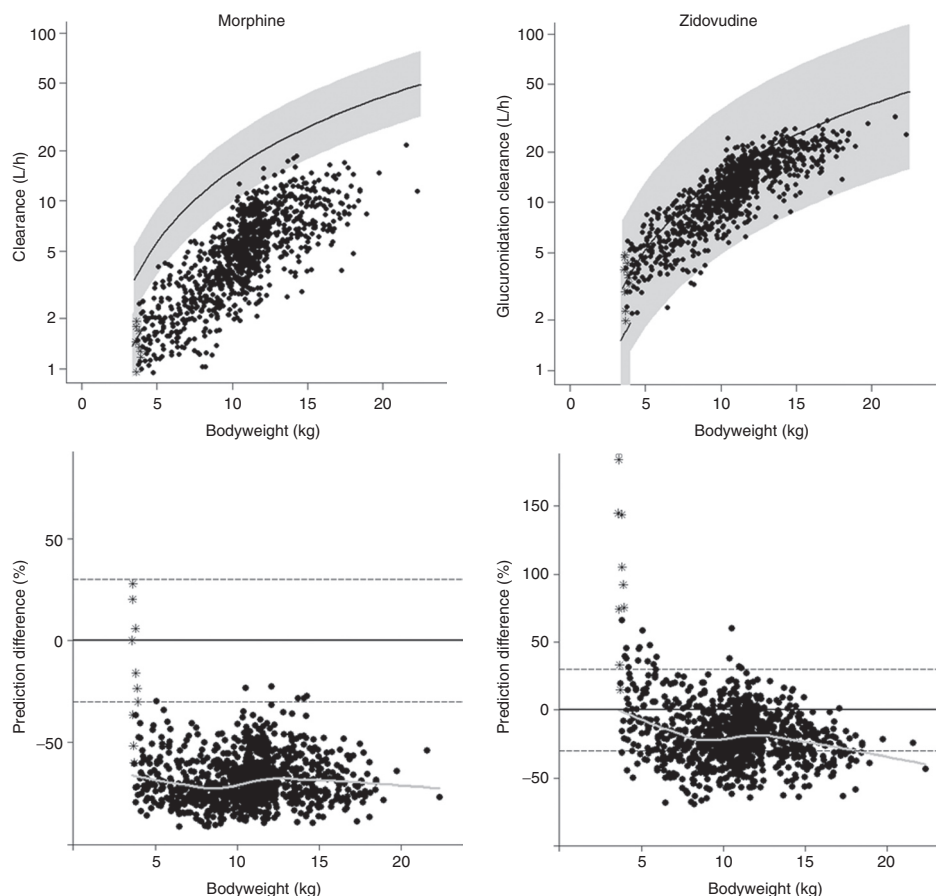
Parameter (unit)	Parameter values			Ref.
	Morphine	Zidovudine	Hypothetical drug	
Physicochemical parameters				
Molecular mass (g/mol)	285.34	267.24	100–1,000	
log P	0.77	0.05	0.01–5.5	33–36
$pK_{a1}$	7.93	9.68	2–12	27,31,33
$pK_{a2}$	9.63	—		
Blood binding parameters				
Blood/plasma ratio	1.08	0.86	Derived	36–38
Fraction unbound in adults	0.62	0.77	Derived	36,39,40
Enzyme kinetic parameters				
$K_m$ ( $\mu\text{mol/l}$ )	115.8	4	115.8	
$V_{max}$ (pmol/min/mg protein)	9,250, M3G	1,166	9,250	26,27
	1,917, M6G		1,917	

$K_m$ , Michaelis–Menten constant; log P, octanol/water partition coefficient; NA, not applicable;  $pK_a$ , acid dissociation constant;  $V_{max}$ , maximum formation rate.

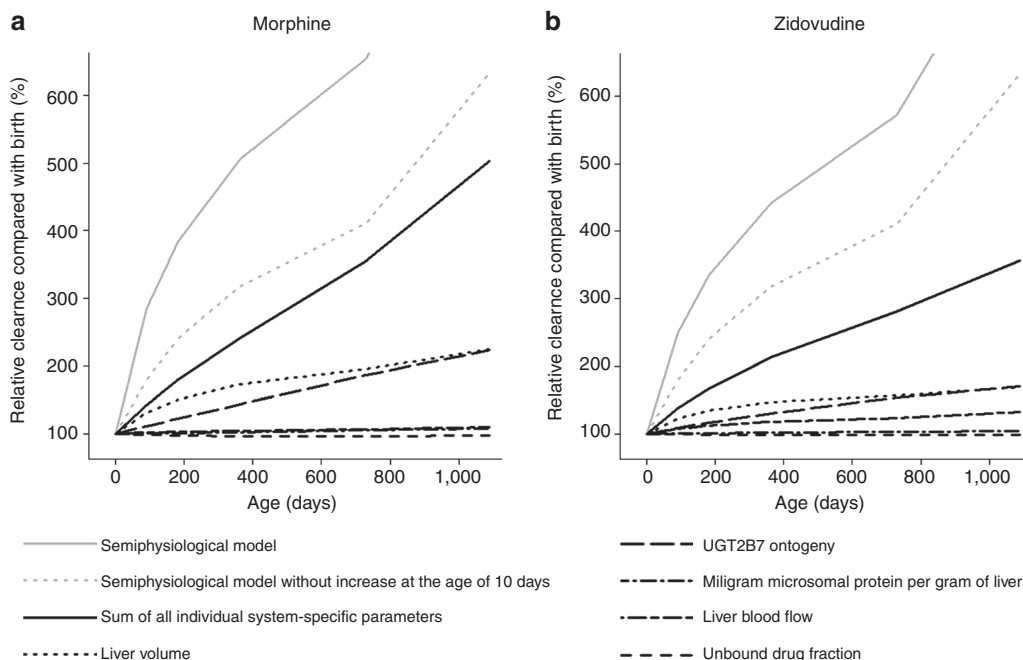
drug fraction resulted in a parallel increase in *in vivo* clearance of 1.5 l/h across the studied age range.

### Semiphysiological glucuronidation function

Figure 1 shows the *in vivo* morphine and zidovudine clearance values in children younger than 3 years obtained in population models using the semiphysiological glucuronidation function (see Part I of this article, ref. 1 and ref. 3) and the PBPK model in Simcyp. The graphs indicate an underprediction of the clearances in children older than 10 days (solid circles) by the PBPK model, yielding a mean percentage difference for this older population of  $-68.3\%$  for morphine and  $-19.1\%$  for zidovudine. In neonates younger than 10 days (asterisks), the reduction in glucuronidation capacity as quantified by the semiphysiological glucuronidation function is not observed in the predictions by the PBPK model, yielding a mean percentage difference of  $-19.4\%$  for morphine and  $105\%$  for zidovudine. This illustrates large differences in the prediction of developmental changes in *in vivo* glucuronidation clearance between the population models with the semiphysiological glucuronidation function and the PBPK model in the first 2 weeks of life. According to the bottom graphs, the prediction difference remains constant throughout the



**Figure 1** *In vivo* morphine clearance (top left) and zidovudine clearance (top right) vs. bodyweight in children younger than 3 years according to the physiologically based pharmacokinetic model (asterisk for neonates younger than 10 days, and solid dots for children older than 10 days) and the population models using the semiphysiological glucuronidation function (lines are population predictions and the shaded area indicates the 95% prediction interval). The difference in clearance value between the models is depicted vs. bodyweight for both drugs (bottom). The horizontal lines in these graphs show 0% prediction difference (solid line) and  $\pm 30\%$  prediction difference (dotted lines) and the grey line represents the loess curve of the data.



**Figure 2** Developmental changes in *in vivo* morphine and zidovudine clearance in the first 3 years of life relative to birth. The solid gray line represents the total increase according to the population models using the semiphysiological glucuronidation function and the dotted gray line represents the clearance increase according to these models without taking the rapid increase at the age of 10 days into account. The solid black line represents the sum of the changes by all five system-specific parameters with the non-solid black lines representing the individual contribution of each system-specific parameter.

bodyweight range in older children, suggesting that in this subpopulation, the maturation profile predicted by the PBPK model mainly differs from the population models in absolute value while it is similar in shape.

Developmental changes in *in vivo* morphine and zidovudine clearance relative to birth are depicted in **Figure 2** for the population models using the semiphysiological glucuronidation function (gray lines) and the PBPK model (black lines), including the individual contribution of each system-specific parameter in the physiologically based model (non-solid black lines). It can be seen that for both drugs, the largest contribution to the increase in clearance comes from the increase in liver volume (dotted black line) and UGT2B7 ontogeny (long dashed black line). When not taking into account the rapid increase in drug glucuronidation in the semiphysiological function at 10 days after birth (dashed gray line), the combined influence of the changes in the five system-specific parameters investigated in this study explains 79% of the clinically observed increases in morphine clearance and 41% of the clinically observed increases in zidovudine clearance in the first 3 years of life.

## DISCUSSION

We have previously shown that the clinically observed maturation pattern for morphine glucuronidation in children, who had been quantified in a pediatric population covariate model,<sup>3,4</sup> could be directly extrapolated to the glucuronidation of zidovudine in a semiphysiological modeling approach (see Part I of this article, ref. 1). This study investigates the extent to which the semiphysiological glucuronidation function can

be extrapolated to other patient populations or other UGT2B7 substrates. Therefore, the physiological and physicochemical basis of this semiphysiological glucuronidation function was investigated using PKPB modeling software (Simcyp, Sheffield, UK). Investigation of the influence of system-specific and drug-specific parameters revealed that increases in liver volume and UGT2B7 ontogeny are the physiological drivers of the developmental changes in *in vivo* drug glucuronidation (**Table 1** and **Figure 2**). Concerning physicochemical drug characteristics, the log P and  $pK_a$  of a drug, but not the molecular mass, were found to influence the absolute value of glucuronidation, without influencing the maturation pattern.

**Figure 1** shows that the clearance predictions by the PBPK model (symbols), using available *in vitro* information on UGT2B7 enzyme kinetics of morphine and zidovudine, are generally lower than the clearance values obtained in the population models with the semiphysiological glucuronidation function. In addition, **Figure 2** shows that the combined influence of the age-related increases in the system-specific parameters investigated in this study (solid black line) does not fully explain the clinically observed increase in morphine and zidovudine clearance (solid gray line), not even when the rapid increase in glucuronidation described by the semiphysiological glucuronidation function at 10 days after birth is discarded (dashed gray line). These discrepancies are probably the result of a combination of factors:

First, the uridine 5'-diphosphate glucuronosyltransferase enzyme kinetic parameters for morphine and zidovudine were obtained from studies using liver microsomes. Confidence that these values accurately represent *in vivo* enzyme kinetics is limited by various factors that influence these measured

*in vitro* values causing difficulties in obtaining good predictions on *in vivo* UGT enzyme kinetics from microsome studies.<sup>5–9</sup> In fact, in this study, the reported  $K_m$  values had to be adjusted to values that yielded accurate clearance predictions by the PBPK model in adults. In a sensitivity analysis, increasing and decreasing  $V_{max}$  and  $K_m$  values by 10-fold yielded predicted pediatric glucuronidation clearances that changed by a factor of 2 for M6G formation and a factor of 12 for both zidovudine glucuronidation and M3G formation. It is, however, emphasized that bias in enzyme kinetic parameter values obtained *in vitro* limits the predictions of absolute glucuronidation clearance by the PBPK model but not the maturation pattern.

Additional discrepancies may be the result of the assumption in the PBPK model that morphine and zidovudine were solely eliminated through UGT2B7-mediated glucuronidation, whereas some studies have suggested that morphine is, to a small degree, also eliminated through sulfation or unchanged elimination in the very young.<sup>10,11</sup> Moreover, active drug uptake or efflux by hepatocytes and biliary clearance of morphine and zidovudine were assumed to be zero. Whereas animal studies with morphine have shown energy-dependent carrier-mediated uptake of morphine in hepatocytes,<sup>12,13</sup> other studies found active hepatic uptake to not limit hepatic morphine metabolism.<sup>14</sup> Finally, biliary clearance of morphine was reported in rat livers.<sup>14</sup>

Furthermore, concerning the system-specific parameters in the PBPK model, while the maturational changes in liver volume are based on a large number of observations,<sup>15</sup> the pediatric information on other system-specific parameters is more limited, decreasing the level of confidence in the ontogeny profiles of these parameters. In particular, the UGT2B7 expression and function in the PBPK model increases linearly with age from 8.9% from adult values at birth to adult values at the age of 20 years. Literature data, however, suggest the expression and function of UGT isoenzymes to increase rapidly in the first few weeks of life.<sup>16</sup> Given that morphine and zidovudine clearances were found to be sensitive to changes in the UGT2B7 ontogeny, a suboptimal representation of this ontogeny profile may explain the discrepancy in the morphine and zidovudine clearance values (Figure 1) and the discrepancy between the increases in morphine and zidovudine clearances in (Figure 2). As liver volume and UGT2B7 ontogeny are the main drivers of UGT2B7-mediated glucuronidation and as the maturation profile of liver volume is well established,<sup>15</sup> an improved function for UGT2B7 ontogeny in the PBPK model can be obtained by subtracting the maturation function for liver volume from the semiphysiological glucuronidation function in children. As such, pediatric population PK modeling, which is based on *in vivo* outcome measures, can indeed provide maturation functions for pediatric PBPK models.

Concerning drug characteristics, the molecular weight of hypothetical drugs was not found to influence drug glucuronidation, whereas the log P and  $pK_a$  of the hypothetical drug molecule influenced only the absolute value of glucuronidation, which is reflected in the population clearance value. These results thereby support the hypothesis that this value is drug specific. Since in a semiphysiological modeling approach for new UGT2B7 substrates the value of this

constant is estimated based on the population analysis of outcome measures, these results suggest that the semiphysiological glucuronidation function can predict developmental changes in glucuronidation clearance of all small-molecular substrates for UGT2B7.

A relevant question in this context is whether the semiphysiological glucuronidation function can be applied to drugs with saturable kinetics. In this study, a linear relationship was found between unbound drug concentration in plasma and the absolute value of glucuronidation; however, the Michaelis–Menten parameters were kept constant in each simulation. Michaelis–Menten parameters influence drug metabolism significantly, but due to the nonlinear correlation between substrate concentration and intrinsic drug clearance, interpretation of the results from simulations with varying Michaelis–Menten constants is complex. We, therefore, conclude that further simulations with varying Michaelis–Menten constants are necessary to investigate the applicability of the semiphysiological glucuronidation function to drugs with saturable kinetics.

In addition, the application of the semiphysiological glucuronidation function in scenarios of drugs with varying extraction ratios needs further investigation. The ontogeny of UGT2B7 isoenzymes may have a one to one effect on low-extraction substrates as in this case, *in vivo* clearance closely reflects intrinsic clearance. By contrast, high-extraction substrates may be affected less by an increased level in UGT activity as their clearance is limited by hepatic blood flow. With similar extraction ratios of morphine and zidovudine of 0.5 and 0.65, respectively,<sup>17–19</sup> the influence of changes in the underlying physiological system is expected to be rather similar for both drugs, resulting in the same ranking of system-specific parameters in Table 1 and the possibility to extrapolate the semiphysiological glucuronidation function between these drugs (see Part I of this article, ref. 1). The small difference in extraction ratio that does exist between these two drugs may explain why the influence of hepatic blood flow on *in vivo* clearance is more pronounced for zidovudine than for morphine.

In conclusion, direct extrapolation of the pediatric covariate model in a semiphysiological modeling approach as described in Part I of this article<sup>1</sup> is possible between UGT2B7 substrates that have linear kinetics and similar extraction ratios. The relatively large impact of changes in liver volume on *in vivo* drug glucuronidation suggest that the applicability of the semiphysiological glucuronidation function in patients with a decreased liver size or liver function may be reduced. The currently available maturation profile for UGT2B7 ontogeny in the PBPK model can be improved based on information obtained in the covariate model of a pediatric population model.

## METHODS

**PBPK simulations.** Simcyp version 11 (Simcyp, Sheffield, UK) was used to investigate the influence of system-specific and drug-specific parameters on the ontogeny of *in vivo* UGT2B7-mediated drug glucuronidation in the first 3 years of life (see Part I of this article, ref. 1). The pediatric database was selected for the simulations and parameters were set to include patients

with a maximum age of 3 years. The accuracy of pediatric clearance predictions for 11 drugs by the Simcyp software package was illustrated previously.<sup>20</sup> A total of 1,000 individuals were simulated and the same random number generation seed was used for repeated simulations, yielding the same set of individuals for each simulation, allowing for a direct comparison of clearance predictions between individuals in simulations with varying parameter values. A uniform age distribution was used and the male/female ratio was set to 1. For each of the 1,000 simulated individuals, age- and sex-appropriate bodyweight and height were determined based on UK reference growth charts taking interindividual variability into account.<sup>21</sup> The parallel-tube model was used to derive whole blood hepatic drug clearances from intrinsic hepatic clearance, hepatic blood flow, and the unbound drug fraction in blood.

Morphine and zidovudine were used as model compounds as both drugs are specific substrates for the UGT2B7 isoenzyme<sup>22–24</sup> and used in the proof-of-concept studies for the development of the semiphysiological glucuronidation function (see Part I of this article, ref. 1). In the simulations, clinically relevant intravenous bolus doses of 0.1 mg/kg morphine or 3 mg/kg zidovudine were administered.

**System-specific parameters.** The pediatric database in Simcyp is based on system-specific parameter values and variability measures in these parameters that represent a “healthy” population. Simulations in this population form the basis for exploring the influence of changes in the system-specific parameters that can be the result of not only maturation but also disease.

Hepatic blood flow, liver volume, milligram protein per gram of liver, UGT2B7 ontogeny, and unbound drug fraction were the system-specific parameters that were investigated. “UGT2B7 ontogeny” denotes the fractional expression and function of the UGT2B7 isoenzyme in children as compared with adults. The percentage change of each of the parameters was obtained by calculating the mean parameter value of all individuals with an age in the first 2 weeks and the last 2 weeks of each interval and by determining the percentage increase in these values per group for the patients in the following groups: I, the first 3 months of life (0–3 months); II, the second 3 months (3–6 months); III, the second half year (6–12 months); IV, the second year (1–2 years); and V, the third year (2–3 years).

Subsequently, one at a time, the values of each system-specific parameter were increased with a physiologically relevant value based on the mean increase in each age group. For hepatic blood flow and liver volume, the value was 23%, for milligram protein per gram of liver it was 2%, for the UGT2B7 ontogeny profile, 21%, and for the unbound drug fraction, the values were 0.51% for morphine and 0.33% for zidovudine. As the user cannot alter the UGT2B7 ontogeny profile in the Simcyp software, an alternative scenario was simulated to represent an increase of 21% in the UGT2B7 ontogeny profile. The age-appropriate ontogeny factor for each individual, which is derived from the ontogeny profile, is a scalar for the intrinsic glucuronidation clearance that takes place in both the liver and the kidneys. Similarly, liver density is a scalar for intrinsic UGT2B7-mediated glucuronidation in the liver, whereas milligram microsomal protein per gram of kidney is a scalar of intrinsic UGT2B7-mediated glucuronidation

clearance in the kidney. Therefore, simulation of a scenario in which both liver density and milligram microsomal protein per gram of kidney are increased by 21% were used to represent a situation with a 21% increased UGT2B7 ontogeny profile.

To quantify the influence of these physiologically relevant changes in the system-specific parameters on the predicted *in vivo* clearance, a sensitivity ratio was calculated for each individual. For this sensitivity ratio, the difference in *in vivo* clearance predictions was divided by the percentage difference in the system-specific parameter. Mean sensitivity ratios were calculated for each system-specific parameter in each of the age groups. By multiplying the percentage change in a system-specific parameter in each age group by the mean sensitivity ratio for that age group, the percentage change in *in vivo* glucuronidation clearance as a result of the changes in the underlying parameter value in that age range was determined.

**Drug-specific parameters.** Morphine and zidovudine were added to the compound database in Simcyp by obtaining their drug-specific parameters from the literature. In all simulations, the assumption was made that there is no elimination through pathways other than UGT2B7-mediated glucuronidation, that there is no active drug transport into or out of the hepatocytes, and that there is no biliary clearance. Inclusion of these processes would increase the predicted drug clearance.

The obtained drug-specific parameters for each drug are presented in **Table 2**. With respect to the Michaelis–Menten parameters, values for the formation of the two morphine glucuronides were obtained from the liver microsomes from five separate adults<sup>25</sup> and values for the glucuronidation of zidovudine were obtained from the liver microsomes from four adults.<sup>26</sup> To verify the obtained drug-specific parameters, predictions of morphine and zidovudine clearances for 1,000 healthy adult volunteers were compared with reported clearance values in adults of 93 l/h for morphine<sup>27–29</sup> and 91.2 l/h for zidovudine.<sup>30–32</sup> This yielded a 75% mean underprediction for morphine and a 71% mean underprediction for zidovudine. On the basis of the literature reports that show that for UGTs albumin and fatty acids in *in vitro* assays influence  $K_m$  values but not  $V_{max}$  values,<sup>5,6</sup> the clearance predictions for morphine and zidovudine in adults were optimized by adjusting the  $K_m$  values. For morphine, the optimized  $K_m$  value was 115.8  $\mu\text{mol/l}$  for the formation of both M3G and M6G, and for zidovudine this was a value of 4  $\mu\text{mol/l}$ . These values were subsequently used in the pediatric simulations.

To identify how physicochemical drug properties influence the maturation pattern of UGT2B7-mediated glucuronidation, *in vivo* clearance values of hypothetical UGT2B7-specific substrates with physicochemical properties that are common for small-molecular drugs were simulated with Simcyp. In these simulations, the implicit assumption was made that the changes in physicochemical properties influenced neither the active transport of the hypothetical drug into or out of the hepatocytes nor the interaction of the hypothetical drug with the UGT2B7 isoenzyme. Hypothetical drugs with molecular weights of 100, 200, 500, 800, and 1,000 g/mol were simulated in combination with log P values of 0.01, 1, and 5.5. Neutral compounds were simulated as well as monoprotic acids and bases with  $pK_a$  values of 2 or 5 and 8.5 or 12, respectively, and diprotic acids and bases with  $pK_a$  values of 2 and 5

and 8.5 and 10, respectively. An ampholyte was used with a  $pK_a$  of 5 and 9. These values are summarized in **Table 2**. The Simcyp toolbox was used to calculate the blood/plasma ratio and unbound drug fraction for each hypothetical drug based on log P and  $pK_a$  values. The Michaelis–Menten parameters obtained for morphine were used, and in the simulations an intravenous drug dose of 0.1 mg/kg was administered.

The influence of changes in physicochemical drug parameters on the predicted *in vivo* clearance was assessed by changing one parameter value at a time and calculating the percentage difference between the clearance predictions between two simulations. When the highest individual prediction difference was <5%, the parameter was classified as not significantly influencing drug glucuronidation. When the highest individual prediction difference was >5% and the difference between mean prediction difference of individuals in the first month of life and individuals in the 35th month of life was <5%, a parameter was classified as influencing the absolute value of drug glucuronidation. When the difference between mean prediction difference of individuals in the first month of life and individuals in the 35th month of life was >5%, the parameter was classified as influencing the ontogeny profile in addition to influencing the absolute value of drug glucuronidation clearance.

**Semiphysiological glucuronidation function.** The semiphysiological glucuronidation function is obtained from a pediatric population covariate model quantifying the net observed maturational changes in drug glucuronidation clearance in children younger than the age of 3 years including preterm and term neonates. This model was obtained and validated in a population analysis of pediatric morphine data<sup>3,4</sup> and could also be directly extrapolated to zidovudine (see Part I of this article, ref. 1). In this model, the overall developmental changes in drug glucuronidation in children younger than 3 years are quantified according to Eq. 1:

$$CL_{ind} = CL_{pop} \times f_{neonate < 10} \times BW^{1.44} \quad (1)$$

in which  $CL_{ind}$  represents the individual glucuronidation clearance,  $CL_{pop}$  represents the population clearance,  $f_{neonate < 10}$  represents a reduced glucuronidation fraction in neonates younger than 10 days, and BW represents the bodyweight of an individual pediatric patient in kilograms. The population clearance for each drug was estimated from clinical outcome measures in a population analysis. The reduction in glucuronidation clearance in neonates with a postnatal age younger than 10 days ( $f_{neonate < 10}$ ) is 50% and is independent from gestational age. The final element of Eq. 1 quantifies the overall ontogeny of *in vivo* drug glucuronidation in this young population using bodyweight as a surrogate descriptor in an exponential equation with an exponent of 1.44.

Using available *in vitro* data as input parameters, the morphine and zidovudine clearance predictions by the physiologically based PK model in Simcyp were compared with the clearance values according to the population models using the semiphysiological glucuronidation function. This was done by plotting clearance values from these models vs. bodyweight, which is the primary covariate in the semiphysiological glucuronidation function, and by plotting the prediction

difference between these clearance values for each drug for each of the 1,000 simulated individuals vs. bodyweight.

In addition, for each simulated individual in this study, the morphine and zidovudine clearances according to the population models using the semiphysiological function were determined as well. The percentage increase in morphine and zidovudine clearance values in each of the five age groups according to these models were calculated as described above and compared with the increase in morphine and zidovudine clearances predicted by the PBPK model for each age group.

**Acknowledgments.** This study was performed within the framework of Dutch Top Institute Pharma project number D2-10.

**Author Contributions.** A.R.H., M.D., and C.A.J.K. designed the research. C.A.J.K. analyzed the research. A.R.H., M.D., D.T., and C.A.J.K. wrote the manuscript.

**Conflict of Interest.** A.R.H. was a joint founder of, and is currently part-time secondee to Simcyp Limited (a Certara company). T.N.J. is a full-time employee of Simcyp Limited (a Certara company).

## Study Highlights

### WHAT IS THE CURRENT KNOWLEDGE ON THE TOPIC?

A pediatric population covariate model that describes maturational changes in morphine glucuronidation in children younger than 3 years was found to have predictive value as a semiphysiological function in a pediatric population PK model for zidovudine, which is eliminated through the same metabolic pathway.

### WHAT QUESTION DID THIS STUDY ADDRESS?

This study assessed the preconditions for the use of the semiphysiological pediatric glucuronidation model for population PK models and PBPK models.

### WHAT THIS STUDY ADDS TO OUR KNOWLEDGE

Applicability of the semiphysiological pediatric glucuronidation function is confirmed for UGT2B7 substrates with similar extraction ratios and linear kinetics in children with normal hepatic function. In addition, it was suggested that information on enzyme ontogeny can be extracted from covariate relationships obtained in population models.

### HOW THIS MIGHT CHANGE CLINICAL PHARMACOLOGY AND THERAPEUTICS

The semiphysiological function may expedite population model development for UGT2B7 substrates in neonates and infants. Information on enzyme ontogeny extracted from these functions may provide essential information for pediatric PBPK models that is difficult to obtain experimentally.

1. Krekels, E.H.J. *et al.* From pediatric covariate model to semiphysiological function for maturation: part I—extrapolation of a covariate model from morphine to zidovudine. *CPT Pharmacometrics Syst. Pharmacol.* 1, eXX (2012).
2. De Cock, R.F.W. *et al.* Maturation of GFR in preterm and term neonates reflected by clearance of different antibiotics. *PAGE 20* (2011) Abstr 2096.
3. Knibbe, C.A. *et al.* Morphine glucuronidation in preterm neonates, infants and children younger than 3 years. *Clin. Pharmacokinet.* 48, 371–385 (2009).

4. Krekels, E.H. et al. Predictive performance of a recently developed population pharmacokinetic model for morphine and its metabolites in new datasets of (preterm) neonates, infants and children. *Clin. Pharmacokinet.* **50**, 51–63 (2011).
5. Manevski, N., Moreolo, P.S., Yli-Kauhaluoma, J. & Finel, M. Bovine serum albumin decreases Km values of human UDP-glucuronosyltransferases 1A9 and 2B7 and increases Vmax values of UGT1A9. *Drug Metab. Dispos.* **39**, 2117–2129 (2011).
6. Rowland, A., Gaganis, P., Elliot, D.J., Mackenzie, P.I., Knights, K.M. & Miners, J.O. Binding of inhibitory fatty acids is responsible for the enhancement of UDP-glucuronosyltransferase 2B7 activity by albumin: implications for *in vitro-in vivo* extrapolation. *J. Pharmacol. Exp. Ther.* **321**, 137–147 (2007).
7. Hewitt, N.J. et al. Primary hepatocytes: current understanding of the regulation of metabolic enzymes and transporter proteins, and pharmaceutical practice for the use of hepatocytes in metabolism, enzyme induction, transporter, clearance, and hepatotoxicity studies. *Drug Metab. Rev.* **39**, 159–234 (2007).
8. Miners, J.O., Knights, K.M., Houston, J.B. & Mackenzie, P.I. *In vitro-in vivo* correlation for drugs and other compounds eliminated by glucuronidation in humans: pitfalls and promises. *Biochem. Pharmacol.* **71**, 1531–1539 (2006).
9. Engrakul, J.J., Foti, R.S., Strelevitz, T.J. & Fisher, M.B. Altered AZT (3'-azido-3'-deoxythymidine) glucuronidation kinetics in liver microsomes as an explanation for underprediction of *in vivo* clearance: comparison to hepatocytes and effect of incubation environment. *Drug Metab. Dispos.* **33**, 1621–1627 (2005).
10. McRorie, T.I., Lynn, A.M., Nespeca, M.K., Opeheim, K.E. & Slattery, J.T. The maturation of morphine clearance and metabolism. *Am. J. Dis. Child.* **146**, 972–976 (1992).
11. Choonara, I., Ekbohm, Y., Lindström, B. & Rane, A. Morphine sulphation in children. *Br. J. Clin. Pharmacol.* **30**, 897–900 (1990).
12. Iwamoto, K., Eaton, D.L. & Klaassen, C.D. Uptake of morphine and nalorphine by isolated rat hepatocytes. *J. Pharmacol. Exp. Ther.* **206**, 181–189 (1978).
13. Déchelotte, P., Sabouraud, A., Sandouk, P., Hackbarth, I. & Schwenk, M. Uptake, 3-, and 6-glucuronidation of morphine in isolated cells from stomach, intestine, colon, and liver of the guinea pig. *Drug Metab. Dispos.* **21**, 13–17 (1993).
14. Doherty, M.M., Poon, K., Tsang, C. & Pang, K.S. Transport is not rate-limiting in morphine glucuronidation in the single-pass perfused rat liver preparation. *J. Pharmacol. Exp. Ther.* **317**, 890–900 (2006).
15. Johnson, T.N., Tucker, G.T., Tanner, M.S. & Rostami-Hodjegan, A. Changes in liver volume from birth to adulthood: a meta-analysis. *Liver Transpl.* **11**, 1481–1493 (2005).
16. Krekels, E.H.J., Danhof, M., Tibboel, D. & Knibbe, C.A.J. Ontogeny of Hepatic Glucuronidation; Methods and Results. *Curr. Drug Metab.* **13**, 728–43 (2012).
17. Stanski, D.R., Greenblatt, D.J. & Lowenstein, E. Kinetics of intravenous and intramuscular morphine. *Clin. Pharmacol. Ther.* **24**, 52–59 (1978).
18. Crotty, B. et al. Hepatic extraction of morphine is impaired in cirrhosis. *Eur. J. Clin. Pharmacol.* **36**, 501–506 (1989).
19. Naritomi, Y., Terashita, S., Kagayama, A. & Sugiyama, Y. Utility of hepatocytes in predicting drug metabolism: comparison of hepatic intrinsic clearance in rats and humans *in vivo* and *in vitro*. *Drug Metab. Dispos.* **31**, 580–588 (2003).
20. Johnson, T.N., Rostami-Hodjegan, A. & Tucker, G.T. Prediction of the clearance of eleven drugs and associated variability in neonates, infants and children. *Clin. Pharmacokinet.* **45**, 931–956 (2006).
21. Cole, T.J., Freeman, J.V. & Preece, M.A. British 1990 growth reference centiles for weight, height, body mass index and head circumference fitted by maximum penalized likelihood. *Stat. Med.* **17**, 407–429 (1998).
22. Court, M.H. et al. Evaluation of 3'-azido-3'-deoxythymidine, morphine, and codeine as probe substrates for UDP-glucuronosyltransferase 2B7 (UGT2B7) in human liver microsomes: specificity and influence of the UGT2B7\*2 polymorphism. *Drug Metab. Dispos.* **31**, 1125–1133 (2003).
23. Coffman, B.L., Rios, G.R., King, C.D. & Tephly, T.R. Human UGT2B7 catalyzes morphine glucuronidation. *Drug Metab. Dispos.* **25**, 1–4 (1997).
24. Barbier, O. et al. 3'-azido-3'-deoxythymidine (AZT) is glucuronidated by human UDP-glucuronosyltransferase 2B7 (UGT2B7). *Drug Metab. Dispos.* **28**, 497–502 (2000).
25. Morrish, G.A., Foster, D.J. & Somogyi, A.A. Differential *in vitro* inhibition of M3G and M6G formation from morphine by @- and (S)-methadone and structurally related opioids. *Br. J. Clin. Pharmacol.* **61**, 326–335 (2006).
26. Uchaipichat, V., Winner, L.K., Mackenzie, P.I., Elliot, D.J., Williams, J.A. & Miners, J.O. Quantitative prediction of *in vivo* inhibitory interactions involving glucuronidated drugs from *in vitro* data: the effect of fluconazole on zidovudine glucuronidation. *Br. J. Clin. Pharmacol.* **61**, 427–439 (2006).
27. Stuart-Harris, R., Joel, S.P., McDonald, P., Currow, D. & Slevin, M.L. The pharmacokinetics of morphine and morphine glucuronide metabolites after subcutaneous bolus injection and subcutaneous infusion of morphine. *Br. J. Clin. Pharmacol.* **49**, 207–214 (2000).
28. Halbsguth, U., Rentsch, K.M., Eich-Höchli, D., Diterich, I. & Fattinger, K. Oral diacetylmorphine (heroin) yields greater morphine bioavailability than oral morphine: bioavailability related to dosage and prior opioid exposure. *Br. J. Clin. Pharmacol.* **66**, 781–791 (2008).
29. Sarton, E. et al. Sex differences in morphine analgesia: an experimental study in healthy volunteers. *Anesthesiology* **93**, 1245–54; discussion 6A (2000).
30. Acosta, E.P., Page, L.M. & Fletcher, C.V. Clinical pharmacokinetics of zidovudine. An update. *Clin. Pharmacokinet.* **30**, 251–262 (1996).
31. Klecker, R.W. Jr et al. Plasma and cerebrospinal fluid pharmacokinetics of 3'-azido-3'-deoxythymidine: a novel pyrimidine analog with potential application for the treatment of patients with AIDS and related diseases. *Clin. Pharmacol. Ther.* **41**, 407–412 (1987).
32. Gitterman, S.R., Drusano, G.L., Egorin, M.J. & Standiford, H.C. Population pharmacokinetics of zidovudine. The Veterans Administration Cooperative Studies Group. *Clin. Pharmacol. Ther.* **48**, 161–167 (1990).
33. Kaufman, J.J., Semo, N.M. & Koski, W.S. Microelectrometric titration measurement of the pKa's and partition and drug distribution coefficients of narcotics and narcotic antagonists and their pH and temperature dependence. *J. Med. Chem.* **18**, 647–655 (1975).
34. Kaufman, J.J., Koski, W.S. & Bennon, D.W. Temperature and pH sensitivity of the partition coefficient as related to the blood-brain barrier to drugs. *Exp. Eye Res.* **25** (suppl.), 201–203 (1977).
35. Luzier, A. & Morse, G.D. Intravascular distribution of zidovudine: role of plasma proteins and whole blood components. *Antiviral Res.* **21**, 267–280 (1993).
36. Teijeiro, S.A., Moroni, G., Motura, M. & Brinon, M.C. Lipophilic character of pyrimidinic nucleoside derivatives: correlation between shake flask, chromatographic (RP-TLC and RP-HPLC) and theoretical methods. *J. Liq. Chrom. & Rel. Technol.* **23**, 855–872 (2000).
37. Tunblad, K., Jonsson, E.N. & Hammarlund-Udenaes, M. Morphine blood-brain barrier transport is influenced by probenecid co-administration. *Pharm. Res.* **20**, 618–623 (2003).
38. Skopp, G., Pötsch, L., Ganssmann, B., Aderjan, R. & Mattern, R. A preliminary study on the distribution of morphine and its glucuronides in the subcompartments of blood. *J. Anal. Toxicol.* **22**, 261–264 (1998).
39. Olsen, G.D. Morphine binding to human plasma proteins. *Clin. Pharmacol. Ther.* **17**, 31–35 (1975).
40. Quevedo, M.A., Ribone, S.R., Moroni, G.N. & Briñón, M.C. Binding to human serum albumin of zidovudine (AZT) and novel AZT derivatives. Experimental and theoretical analyses. *Bioorg. Med. Chem.* **16**, 2779–2790 (2008).



**CPT: Pharmacometrics & Systems Pharmacology** is an open-access journal published by Nature Publishing Group. This work is licensed under the Creative Commons Attribution-NonCommercial-No Derivative Works 3.0 Unported License. To view a copy of this license, visit <http://creativecommons.org/licenses/by-nc-nd/3.0/>