

Investigating the physical properties of galaxies in the Epoch of Reionization with MIRI/JWST spectroscopy

J. Álvarez-Márquez¹, L. Colina^{1,2}, R. Marques-Chaves¹, D. Ceverino^{2,3,4}, A. Alonso-Herrero⁵, K. Caputi^{6,2}, M. García-Marín⁷, A. Labiano⁵, O. Le Fèvre⁸, H. U. Norgaard-Nielsen⁹, G. Östlin¹⁰, P. G. Pérez-González¹, J. P. Pye¹¹, T. V. Tikkanen¹¹, P. P. van der Werf¹², F. Walter^{13,14}, and G. S. Wright¹⁵

¹Centro de Astrobiología (CSIC-INTA), Carretera de Ajalvir, 28850 Torrejón de Ardoz, Madrid, Spain; e-mail: javier.alvarez@cab.inta-csic.es

²Cosmic Dawn Center (DAWN)

³Niels Bohr Institute, University of Copenhagen, Lyngbyvej 2, 2100, Copenhagen Ø, Denmark

⁴Universität Heidelberg, Zentrum für Astronomie, Institut für theoretische Astrophysik, Albert-Ueberle-Str. 2, 69120 Heidelberg, Germany

⁵Centro de Astrobiología (CAB, CSIC-INTA), ESAC Campus, E-28692 Villanueva de la Cañada, Madrid, Spain

⁶Kapteyn Astronomical Institute, University of Groningen, P.O. Box 800, 9700AV Groningen, The Netherlands

⁷European Space Agency, 3700 San Martin Drive, Baltimore, MD21218

⁸Aix Marseille Université, CNRS, LAM (Laboratoire d'Astrophysique de Marseille) UMR 7326, 13388, Marseille, France

⁹DTU Space, National Space Institute, Technical University of Denmark, Elektrovej 327, DK-2800 Kgs. Lyngby, Denmark

¹⁰Department of Astronomy and Oskar Klein Centre, Stockholm University, SE-10691 Stockholm, Sweden

¹¹Department of Physics & Astronomy, University of Leicester, Leicester, LE1 7RH, U.K.

¹²Leiden Observatory, Leiden University, P.O. Box 9513, NL-2300 RA Leiden, the Netherlands

¹³Max Planck Institute for Astronomy, Königstuhl 17, 69117 Heidelberg, Germany

¹⁴National Radio Astronomy Observatory, Pete V. Domenici Array Science Center, P.O. Box O, Socorro, NM 87801, USA

¹⁵UK Astronomy Technology Centre, Royal Observatory, Edinburgh, Black-ford Hill, Edinburgh EH9 3HJ, United Kingdom.

July 17, 2019

ABSTRACT

The *James Webb Space Telescope* (JWST) will provide deep imaging and spectroscopy for sources at redshifts above 6, covering the entire Epoch of Reionization (EoR, $6 < z < 10$), and enabling the detailed exploration of the nature of the different sources during the first 1 Gyr of the history of the Universe. The Mid-IR instrument (MIRI) integral field spectrograph (MRS) will be the only instrument onboard JWST able to observe the brightest optical emission lines $H\alpha$ and $[\text{OIII}]0.5007\mu\text{m}$ at redshifts above 7 and 9, respectively, providing key insights into the physical properties of sources during the early phases of the EoR. This paper presents a study of the $H\alpha$ fluxes predicted by state-of-the-art FIRSTLIGHT cosmological simulations for galaxies at redshifts of 6.5 to 10.5, and its detectability with MIRI. Deep (40 ksec) spectroscopic integrations with MRS will be able to detect ($S/N > 5$) EoR sources at redshifts above 7 with intrinsic star formation rates (SFR) of more than $2 M_{\odot} \text{ yr}^{-1}$, and stellar masses above $4-9 \times 10^7 M_{\odot}$. These limits cover the upper end of the SFR and stellar mass distribution at those redshifts, representing $\sim 6\%$ and $\sim 1\%$ of the predicted FIRSTLIGHT population at the 6.5-7.5 and 7.5-8.5 redshift ranges, respectively. In addition, the paper presents realistic MRS simulated observations of the expected (rest-frame) optical and near-infrared spectra for some spectroscopically confirmed EoR sources recently detected by ALMA as $[\text{OIII}]88\mu\text{m}$ emitters. The MRS simulated spectra cover a wide range of low metallicities from about 0.2 to $0.02 Z_{\odot}$, and different $[\text{OIII}]88\mu\text{m}/[\text{OIII}]0.5007\mu\text{m}$ line ratios. The simulated 10ks MRS spectra show S/N in the range of 5 to 90 for $H\beta$, $[\text{OIII}]0.4959, 0.5007 \mu\text{m}$, $H\alpha$ and $\text{HeI}1.083\mu\text{m}$ emission lines of the currently highest spectroscopically confirmed EoR (lensed) source MACS1149-JD1 at a redshift of 9.11, independent of metallicity. In addition, deep 40 ksec simulated spectra of the luminous, merger candidate B14-65666 at 7.15 shows the MRS capabilities of detecting, or putting strong upper limits, on the weak $[\text{NII}]0.6584\mu\text{m}$, $[\text{SII}]0.6717, 0.6731\mu\text{m}$, and $[\text{SIII}]0.9069, 0.9532\mu\text{m}$ emission lines. These observations will provide the opportunity of deriving accurate metallicities in bright EoR sources using the full range of (rest-frame) optical emission lines up to $1\mu\text{m}$. In summary, MRS will enable the detailed study of key physical properties like internal extinction, instantaneous star formation, hardness of the ionizing continuum, and metallicity, in bright (intrinsic or lensed) EoR sources.

Key words. galaxies: high- z – galaxies: formation – galaxies: evolution – infrared: galaxies – telescopes – astronomical instrumentation, methods and techniques

1. Introduction

Deep imaging surveys with the *Hubble Space Telescope* (HST) have detected galaxies at very high redshifts ($z > 5$) in large numbers, with hundreds of them at (photometric) redshifts of about 7, and about 200 candidates at redshifts of 8-10, i.e. well within the Epoch of Reionization (EoR) of the universe (Bouwens et al.

2015; Oesch et al. 2015a; Roberts-Borsani et al. 2016; Stefanon et al. 2017; Oesch et al. 2018). The combination of *HST* and *Spitzer* deep imaging has further identified these galaxies as potential strong optical line emitters based on the flux excess in the IRAC 3.6 and $4.5 \mu\text{m}$ bands (e.g., Schaerer & de Barros 2009; Labbé et al. 2013; Stark et al. 2013; Smit et al. 2015; Bouwens

et al. 2016b; Rasappu et al. 2016; Roberts-Borsani et al. 2016). The $H\beta$ + $[OIII]$ and the $H\alpha$ lines have large equivalent widths with values of up to (rest-frame) 1000-2000Å (e.g. Faisst et al. 2016; Mármol-Queraltó et al. 2016; Rasappu et al. 2016; Smit et al. 2016; Caputi et al. 2017; Lam et al. 2019), and a non-linear dependency with redshift $(1+z)^\alpha$ with $\alpha \sim 1.8$ and ~ 1.3 for sources at redshifts $z < 2.5$ and $2.5 < z < 6$, respectively (Faisst et al. 2016; Mármol-Queraltó et al. 2016).

The spectroscopic confirmation of EoR sources remains very limited. It has been based mostly on the $Ly\alpha$ detection (Stark et al. 2017 for a recent compilation; Zitrin et al. 2015; Oesch et al. 2015b; Jung et al. 2019), which becomes very inefficient at $z > 7$ as only the brightest sources exhibit $Ly\alpha$ emission (Pentericci et al. 2011). Additionally, detection of far-infrared $[CII]158\mu\text{m}$ and $[OIII]88\mu\text{m}$ line emitters at redshifts of up to 9.11 have been recently reported with ALMA (Inoue et al. 2016; Carniani et al. 2017; Tamura et al. 2019; Hashimoto et al. 2019, 2018; Smit et al. 2018).

The sub-arcsec imaging and spectroscopic capabilities of JWST, combined with its broad spectral range coverage (0.6 to 28 μm), and its increased sensitivity of one to two orders of magnitude better than that of previous space observatories such as HST and *Spitzer*, will provide exquisite data to investigate in detail the physical nature and properties of EoR sources at redshifts above 6. Among the JWST instruments, the Mid-infrared Instrument (MIRI) Medium Resolution Spectrograph (MRS) covering the 5 to 28 μm spectral range, will be the only instrument capable of detecting the strongest optical lines, $H\alpha$ and $[OIII]0.5007\mu\text{m}$ at redshifts well above 6.6 and 9, respectively (Wright et al. 2015; Wells et al. 2015; and references therein). In addition, while JWST near-infrared spectrograph (NIRSpec) will be covering the UV and blue rest-frame range (Chevallard et al. 2019), the MRS extends the observed spectral range above the rest-frame $[OIII]$ lines, and well into the 1 μm region, where internal extinction is less relevant, and other, less explored, lines such as $[SIII]0.907, 0.953 \mu\text{m}$ and $\text{HeI}1.083\mu\text{m}$ are present.

The rest-frame optical/near-IR spectral range covered by the MRS is key to develop a full understanding of the physical properties and mechanisms involved in the earliest stages in the formation of galaxies during EoR. Of the main optical diagnostic lines, the $H\alpha$ is the least affected by internal extinction, and therefore the cleanest tracer of the instantaneous star formation rate (SFR, Kennicutt 1998 for review) in EoR sources, even if a measurement of internal extinction is not available. Moreover, the combination of $H\alpha$ with $Ly\alpha$ and UV-continuum measurements will provide more accurate values for the $Ly\alpha$ and the ionizing escaping fractions. In addition, the $[NII]0.6584\mu\text{m}/H\alpha$ and $[SII]0.6717, 0.6731\mu\text{m}/H\alpha$ ratios trace the metallicity (Z) in pure star-forming galaxies (Maiolino & Mannucci 2019 for a review), and combined with the $[OIII]/H\beta$ ratio trace the nature of the ionizing source (Kewley et al. 2013). Several other, less explored, combinations of line ratios involving the $[NII]$, $[SII]$, and $[SIII]$ lines become available as additional metallicity tracers (Maiolino & Mannucci 2019 and references therein). Finally, the $\text{HeI} 1.083 \mu\text{m}$, which is the strongest HeI line in the entire optical and near-infrared (near-IR) range (Porter et al. 2005), can provide in combination with the $H\alpha$ line, a measurement of the hardness of the ionizing continuum, and therefore information on the nature of the ionizing source, as the hydrogen and HeI lines are sensitive to the total amount of photons with energies above 13.6 eV (912Å) and 24.6 eV (504Å), respectively.

Predictions of the nebular spectra of EoR sources from state-of-the-art cosmological simulations (Barrow et al. 2017; Cev-

erino et al. 2019; Katz et al. 2019) are now available for a direct comparison with future JWST observations. These simulations follow the physical processes associated with the early formation and evolution of galaxies during the first 1 Gyr of the universe. These simulations predict galaxies in the early universe as strong line emitters, confirmed by the detection of $Ly\alpha$ and, more recently, $[OIII]88\mu\text{m}$ line emitters at redshifts $\sim 7-9$. Therefore, the prospects of investigating the nature, evolution and physical properties of early galaxies with the MIRI spectrograph should be explored in detail.

This paper presents a study of the detectability of FIRSTLIGHT simulated galaxies at redshifts of 6.5 to 10.5, and realistic MIRI/JWST spectra of the newly discovered high- z $[OIII]88\mu\text{m}$ emitters detected with ALMA. The paper is structured as follows. The most relevant features of the FIRSTLIGHT simulations, and the apparent fluxes for the two strongest optical emission lines, $[OIII]0.5007\mu\text{m}$ and $H\alpha$ for FIRSTLIGHT galaxies at redshifts 6.5 to 10.5 as a function of their SFR, stellar mass (M_*), and specific star formation (sSFR) are presented in Sect. 2 together with a discussion of the detectability of the population of FIRSTLIGHT $H\alpha$ emitters with MRS. Specific examples of MRS simulated spectra for two of the recently detected $[OIII]88\mu\text{m}$ emitters, MACS1149-JD1 (Zheng et al. 2012; Hashimoto et al. 2018) and B14-65666 (Bowler et al. 2014, 2017; Hashimoto et al. 2019) at a redshift of 9.11 and 7.15, are presented in Sect. 3, together with the possibilities that MRS opens for the detail studies of their physical properties such as internal extinction, instantaneous star formation, hardness of ionizing continuum, and metallicity. A summary of the results and future work is presented in Sect. 4. Throughout this paper we use a standard cosmology with matter and dark energy density $\Omega_m = 0.3$, $\Omega_\Lambda = 0.7$, and Hubble constant $H_0 = 70 \text{ km s}^{-1} \text{ Mpc}^{-1}$, and the AB magnitude system.

2. FIRSTLIGHT: EoR line emitters from cosmological simulations

We use the zoom-in cosmological simulations of galaxies of the FIRSTLIGHT project (Ceverino et al. 2017, 2018, 2019). Briefly, this consists of a complete mass-selected sample of 289 halos, selected at $z = 5$ in two cosmological boxes of 10 and 20 Mpc h^{-1} with halo masses between $10^9 - 10^{11} M_\odot$ (see more details in Ceverino et al. 2017). The maximum spatial resolution is 10 pc. The dark matter particle mass resolution is $m_{\text{DM}} = 10^4 M_\odot$ and the minimum star particle mass is $100 M_\odot$.

These high-resolution simulations are performed with the ART code (Kravtsov et al. 1997; Kravtsov 2003; Ceverino et al. 2014; Ceverino & Klypin 2009; Ceverino et al. 2019). They follow the evolution of a gravitating system and the Eulerian gas hydrodynamics, and incorporates other astrophysical processes, such as gas cooling radiation, photoionization heating by the cosmological UV background, a stochastic star formation model, as well as a model that includes thermal, kinetic and radiative feedback (see more details in Ceverino et al. 2017).

The FIRSTLIGHT database¹ includes several properties for all snapshots of the main galaxy progenitor of the 289 zoom-in simulations, such as the virial, stellar and gas masses, and its SFR, in steps of 10 Myr. The database starts when the galaxy reaches the halo mass of $M_{\text{vir}} = 10^9 M_\odot$ and ends in the last available snapshot at $z \geq 5$. In general, these galaxies show non-uniform star formation histories, spending most of their time

¹ visit the website for data retrieval: <http://www.ita.uni-heidelberg.de/~ceverino/FirstLight/index.html>

(70%) in bursts of star formation (Ceverino et al. 2018), consistent with cosmological gas accretion events. In this work, we use all snapshots within the redshift range $6.5 \leq z \leq 10.5$. This sample is composed of 10,064 snapshots, and covers a wide range of stellar masses ($\sim 10^{5-9} M_{\odot}$), SFRs ($\sim 0 - 30 M_{\odot} \text{ yr}^{-1}$), and metallicities ($Z = 3 \times 10^{-5} - 8 \times 10^{-3}$).

In addition to the physical properties mentioned above, spectral energy distributions (SEDs) are also publicly available for all these snapshots (Ceverino et al. 2019). Stellar SEDs are generated using the Binary Population and Spectral Synthesis model (BPASS: Eldridge et al. 2017) and assume a Kroupa (2001) initial mass function (IMF). The contribution of nebular emission is also available and assumes the stellar metallicity, and a gas covering factor of one with an electron density of 100 cm^{-3} (see Ceverino et al. 2019, for details).

2.1. MRS detectability of FIRSTLIGHT EoR line emitters

Luminosities of the two strongest optical emission lines, [OIII] $0.5007\mu\text{m}$ and $H\alpha$, are extracted for each nebular SED component and converted to observable fluxes (in units of $\text{erg s}^{-1} \text{ cm}^{-2}$) using the following equation:

$$F_{\text{obs}}([\text{OIII}], H\alpha) = \frac{L([\text{OIII}], H\alpha)}{4\pi D_L^2}, \quad (1)$$

where D_L is the luminosity distance at a given redshift for the adopted cosmology. Figure 1 shows the relation between the [OIII]/ $H\alpha$ ratio and the $H\alpha$ emission line fluxes of the simulated galaxies. The most luminous FIRSTLIGHT galaxies present similar $H\alpha$ and [OIII] $0.5007\mu\text{m}$ fluxes ([OIII] $0.5007\mu\text{m}/H\alpha \geq 1$), whereas for fainter galaxies, $H\alpha$ tends to be brighter than [OIII] $0.5007\mu\text{m}$ ([OIII] $0.5007\mu\text{m}/H\alpha < 1$), similar to what is found in metal deficient low- z galaxies (e.g., Izotov & Thuan 2011; Hirschauer et al. 2016; Izotov et al. 2018). Note, however, that these simulations do not include the effect of dust attenuation, although it is expected to be negligible in low-mass, low-metallicity high- z galaxies (e.g., Hashimoto et al. 2018).

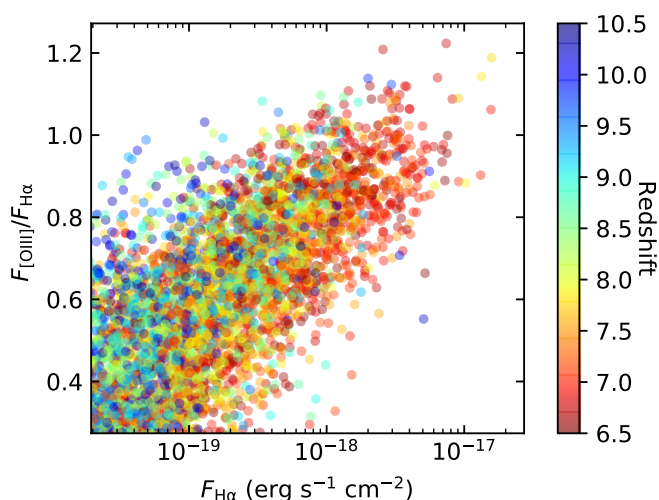


Fig. 1. Relation between [OIII]/ $H\alpha$ and $H\alpha$ fluxes of the FIRSTLIGHT simulated galaxies at $6.5 < z < 10.5$. The most luminous galaxies present similar $H\alpha$ and [OIII] fluxes, whereas for fainter galaxies, $H\alpha$ tends to be relatively brighter than [OIII], similar to what is found in metal poor low- z galaxies.

Figure 2 shows the derived $H\alpha$ fluxes of all snapshots of the main galaxy progenitor of the FIRSTLIGHT simulations with redshifts between 6.5 and 10.5 as a function of their SFRs, stellar masses, and specific SFRs. Overall, these galaxies show a linear relation between $H\alpha$ fluxes and SFRs, as expected, since FIRSTLIGHT SFRs are computed using stellar particles younger than ~ 10 Myr that produce copious amounts of ionizing photons that ionize the surrounding gas. The relation between $H\alpha$ flux and stellar mass, and therefore sSFR, is, nevertheless, much broader due to the stochastic star formation histories in the simulations (see Ceverino et al. 2018, for details). This sample is dominated by numerous low mass galaxies with extremely faint $H\alpha$ emission for JWST spectroscopy, characterized by median values of $\bar{F}(H\alpha) = 3.8, 2.4,$ and $1.5 \times 10^{-20} \text{ erg s}^{-1} \text{ cm}^{-2}$ in the redshift intervals of 6.5-7.5, 7.5-8.5, and $z > 8.5$, respectively. However, there is a fraction of galaxies showing much higher fluxes around $F(H\alpha) \sim 10^{-18} - 10^{-17} \text{ erg s}^{-1} \text{ cm}^{-2}$ being accessible to observe with MIRI/JWST spectroscopy.

In order to study the detectability of $H\alpha$ in such galaxy population, we use the expected MRS limiting sensitivity curves of Glasse et al. (2015). Note that these sensitivity curves refer to point-like sources with spectrally unresolved lines. By using medium deep (10 ks) and deep (40 ks) on-source MRS spectroscopic observations we find limiting $H\alpha$ fluxes of $\approx 5.8 \times 10^{-18} \text{ erg s}^{-1} \text{ cm}^{-2}$ (10σ in 10 ks) and $\approx 1.4 \times 10^{-18} \text{ erg s}^{-1} \text{ cm}^{-2}$ (5σ in 40 ks), respectively.² As shown in Figure 2, this means that for the entire $6.5 < z < 10.5$ FIRSTLIGHT sample, only a small fraction of about 6.2, 1.1, and 0.4% of FIRSTLIGHT galaxies in the redshift range of 6.5-7.5, 7.5-8.5, and $z > 8.5$, respectively, would be detected (signal-to-noise ratio, S/N ≥ 5) in deep 40 ks observations. This indicates that only the most luminous FIRSTLIGHT simulated galaxies, those with star formation rates larger than 1.6, 1.9, and $3.9 M_{\odot} \text{ yr}^{-1}$, and stellar masses larger than 4, 9, and $14 \times 10^7 M_{\odot}$ in the redshift intervals of 6.5-7.5, 7.5-8.5, and $z > 8.5$, respectively, will be accessible for detailed studies with MRS spectroscopy in a moderate amount of observing time (40 ks).

Note, however, that the FIRSTLIGHT simulations are limited to halo masses of a few times $10^{11} M_{\odot}$ within a cosmological volume of $\sim 2 \times 10^4 \text{ Mpc}^3$. As shown in the middle panel of Figure 2, this limits simulated galaxies to have stellar masses above $2 \times 10^9 M_{\odot}$. However, massive EoR galaxies have been recently detected by ALMA as [OIII] $88\mu\text{m}$ emitters (Inoue et al. 2016; Hashimoto et al. 2019; Tamura et al. 2019). These galaxies are relatively massive, $M_* = (2 - 5) \times 10^9 M_{\odot}$, and show very strong [O III] $88\mu\text{m}$ line fluxes, $\approx (0.6 - 17.5) \times 10^{-18} \text{ erg s}^{-1} \text{ cm}^{-2}$. The UV-luminous, high EW[$H\beta$ +OIII] Ly α -emitters sources (Roberts-Borsani et al. 2016; Stark et al. 2017), could also belong to the same class of EORs. Assuming a wide range of [OIII] $0.5007\mu\text{m}/[\text{OIII}]88\mu\text{m}$ (hereinafter R[OIII]) and [OIII] $0.5007\mu\text{m}/H\alpha$ line ratios (R[OIII] = 6.5 – 10 and [OIII] $0.5007\mu\text{m}/H\alpha = 0.59 - 1.93$, see Table 3), these galaxies will show $H\alpha$ fluxes of about $(0.2 - 30) \times 10^{-17} \text{ erg s}^{-1} \text{ cm}^{-2}$ (see Figure 2), well above the detection limits even for medium-deep (10 ks) MRS observations. On the other hand, for more typical, less luminous galaxies, the power of strong gravitational lensing may add the required boost in the apparent fluxes necessary to reach the MRS sensitivity. Therefore high S/N optical (~ 0.5 to $1 \mu\text{m}$) emission line spectra will become available with MRS for the first time at such early cosmic times, providing the opportu-

² The sensitivity is roughly constant within the wavelength range covered by the MRS channel 1, from 4.9 to $7.6 \mu\text{m}$, i.e., $H\alpha$ redshifted to $6.5 < z < 10.5$ (see Glasse et al. 2015).

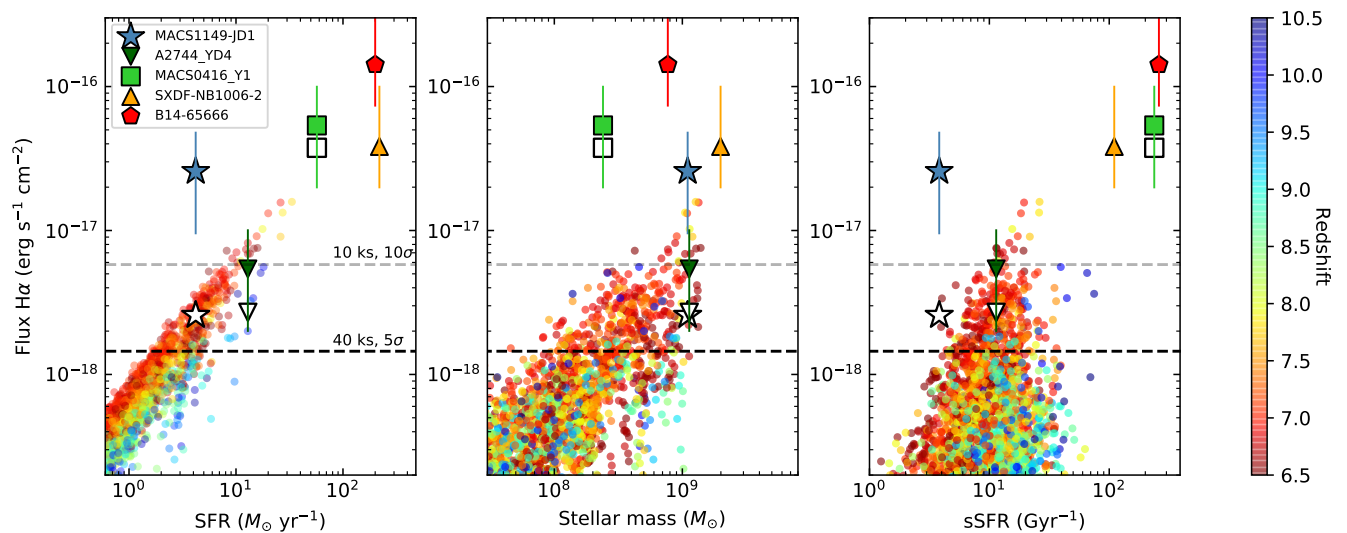


Fig. 2. Predicted $H\alpha$ fluxes as a function of star formation rate (left), stellar mass (middle), and specific star formation rate (right) for the FIRST-LIGHT simulated galaxies at $6.5 < z < 10.5$. Grey and black horizontal dashed lines mark respectively the 10σ and 5σ limits of medium deep (10 ks) and deep (40 ks) MRS spectroscopic observations. Other known $z > 7$ galaxies with detected [OIII] $88\mu\text{m}$ emission line (Inoue et al. 2016; Laporte et al. 2017; Hashimoto et al. 2019, 2018; Tamura et al. 2019) are also shown with filled symbols (SFR and stellar mass measurements of A2444_YD4 SXFD-NB10006-2 have been corrected for the lower proportion of low-mass stars in the Kroupa IMF relative to the standard Salpeter assumed in Inoue et al. 2016; Laporte et al. 2017, respectively). For these, ratios of [OIII] $88\mu\text{m}$ / [OIII] $0.5007\mu\text{m}$ = 10 and [OIII] $0.5007\mu\text{m}$ / $H\alpha$ = 1.1 are used to derive the expected $H\alpha$ fluxes (vertical lines show the minimum and maximum expected $H\alpha$ fluxes considering different line ratios of R[OIII] and [OIII] $0.5007\mu\text{m}/H\alpha$; see text for details). For the galaxies magnified by gravitational lensing, such as MACS1149-JD1, A2744_YD4, and MACS0416_Y1, the de-magnified expected fluxes are shown in empty symbols (SFR and M_* measurements refer to intrinsic values).

nity of characterizing several of the physical properties of these sources. An exploration of these possibilities is presented in the following section with two specific examples.

3. MIRI/JWST spectroscopy: EoR [OIII] $88\mu\text{m}$ line emitters

In the previous section, we concluded that all ALMA detected [OIII] $88\mu\text{m}$ sources, and also known UV-luminous LAEs (Stark et al. 2017), in the EoR will be easily studied using the $H\alpha$ emission line with a medium-deep (10ks) and deep (40ks) MRS observations. In the following, we present realistic MRS simulated observations of the rest-frame optical and near-IR spectrum ($\sim 0.5 - 1.2 \mu\text{m}$) for two recently ALMA detected [OIII] $88\mu\text{m}$ emitters, MACS1149-JD1 (Zheng et al. 2012; Hashimoto et al. 2018) and B14-65666 (Bowler et al. 2014, 2017; Hashimoto et al. 2019). MACS1149-JD1 is a lensed galaxy with a magnification factor of ~ 10 at a redshift of 9.11, being the highest- z spectroscopically confirmed galaxy based on an emission line. Its derived intrinsic SFR of $4.2 M_\odot \text{ yr}^{-1}$, sSFR of 4 Gyr^{-1} , stellar mass of $1.1 \times 10^9 M_\odot$, and observed [OIII] $88\mu\text{m}$ flux of $3 \times 10^{-18} \text{ erg s}^{-1} \text{ cm}^{-2}$ places it within the range of $H\alpha$ fluxes clearly detectable with medium-deep (10ks) MRS spectroscopy. On the other hand, B14-65666 is a Lyman break galaxy system of two sources likely interacting/merging at redshift 7.15, identified as UV bright with an absolute magnitude of $M_{UV} \sim -22.3$ places it in the range of luminous LAEs (Roberts-Borsani et al. 2016; Stark et al. 2017). The global system has a derived SFR of $200 M_\odot \text{ yr}^{-1}$, sSFR of 259 Gyr^{-1} , stellar mass of $7.7 \times 10^8 M_\odot$, and [OIII] $88\mu\text{m}$ flux of $21.8 \times 10^{-18} \text{ erg s}^{-1} \text{ cm}^{-2}$. Table 1 summarizes the intrinsic properties of both sources.

Table 1. Intrinsic properties of MACS1149-JD1 and B14-65666

	MACS1149-JD1 ^(1,*)	B14-65666 ⁽²⁾
Redshift	9.11	7.15
$L_{[\text{OIII}]88\mu\text{m}}$ [L_\odot]	7.4×10^7	34.4×10^8
SFR [$M_\odot \text{ yr}^{-1}$]	4.2	200
M_* [M_\odot]	1.1×10^9	7.7×10^8
sSFR [Gyr^{-1}]	3.8	259

⁽¹⁾ Hashimoto et al. (2018), ⁽²⁾ Hashimoto et al. (2019)

^(*) Intrinsic physical properties (After magnification-correction of $\mu \sim 10$)

3.1. Generating MRS simulated spectra

The process to build a final calibrated 1D MRS simulated spectrum has four different phases. First, a variety of spectral templates that cover the expected range of metallicities and excitation conditions of the ionized gas for galaxies in the EoR are built (Sect. 3.1.1). Second, we take advantage of the MIRI instrument simulator (MIRISim)³ to generate simulated MRS observations where the spectral template, astronomical scene, instrumental and observational configurations are set up (Sect. 3.1.2). Third, the official JWST calibration pipeline is used to calibrate the simulated MRS observations and derive the 3D spectral cubes (Sect. 3.1.3). Finally, we extract the final 1D calibrated spectrum for each simulated MRS observation and calculate the emission line fluxes (Sect. 3.1.4).

³ It is part of MIRICLE python environment (<http://www.miricle.org>)

3.1.1. Low-metallicity spectral templates

The spectral templates consist of only rest-frame optical/Near-IR emission lines (i.e. no stellar continuum included), where the line ratios are based on observed spectra of low- z , low-metallicity dwarf galaxies (Figure 3 and Table 2). To cover the range of metallicities expected in EoR sources, three different templates are constructed according to metallicity, one low-metallicity ($\sim 0.2 Z_{\odot}$) and two metal-poor (0.04 and $0.02 Z_{\odot}$). For the low-metallicity template (METAL_0.2_SOLAR), the emission lines are taken as the average ratios derived for a sample of well measured low-metallicity ($0.2 Z_{\odot}$) dwarf galaxies (Izotov & Thuan 2011). For the metal-poor templates, the spectra of the metal-deficient, blue-compact dwarf SBS0335-052E (Izotov & Thuan 2011, METAL_0.04_SOLAR), and the lowest metallicity J0811+4130 dwarf star forming galaxy (Izotov et al. 2018, METAL_0.02_SOLAR) are used. The selected values cover the wide range of metallicities derived for FIRSTLIGHT EoR galaxies (Ceverino et al. 2019). The spectral templates do not include any contribution by a low-luminosity active galactic nuclei (AGN) as done in some explorations of UV BPT-like diagrams based on photoionization models (Feltre et al. 2016; Nakajima et al. 2018). In the optical range, the presence of an AGN will increase the luminosity of the metallic lines relative to hydrogen and therefore would help of detect the presence of an AGN (Kewley et al. 2013).

The templates are further normalized in flux using the $R[\text{OIII}]$, and the observed $[\text{OIII}]88\mu\text{m}$ flux. The line ratios between the optical and far-infrared $[\text{OIII}]$ lines have a well known and strong dependency on the electron density and temperature of the ionized gas (Dinerstein et al. 1985; Keenan & Aggarwal 1990). According to these authors, the $R[\text{OIII}]$ ratio has a value of ~ 3 to ~ 15 for an electron density of 100 cm^{-3} , and electron temperatures in the $(1-2) \times 10^4 \text{ K}$ range. For a given temperature in this range, the $R([\text{OIII}])$ ratio would further increase with density by factors of up to 2 for electron densities of up to 1000 cm^{-3} .

Studies of a large representative sample of giant HII regions, nearby HII galaxies and green peas covering the 8.5 to 7.2 ($12+\log(\text{O}/\text{H})$)⁴ metallicity range, show a well defined relation between the metallicity and the $[\text{OIII}]$ electron temperature given by the expression (Amorín et al. 2015): $12+\log(\text{O}/\text{H}) = 9.22 - 0.89 \times T_e([\text{OIII}])$, in units of 10^4 K . According to this expression, the electron temperature of the $[\text{OIII}]$ ionized gas ranges from 1.4 to $2.3 \times 10^4 \text{ K}$, for metallicities ~ 8.4 to ~ 7.2 (Amorín et al. 2015). These temperatures agree well with those measured in a sample of high-ionization, metal-deficient blue dwarf galaxies (Thuan & Izotov 2005). Blue dwarfs have $[\text{OIII}]$ temperatures in the range of $1.3-1.4$, $1.4-1.8$, and $1.8-2.0 \times 10^4 \text{ K}$ for metallicities above 8.0 , between 7.5 and 7.9 , and below 7.5 , respectively. On the other hand, the electron density derived from the $[\text{SII}]$ doublet line ratio has values in the 110 to 1310 cm^{-3} range, with an average of 410 cm^{-3} . These densities are similar to those measured in some of the most metal deficient low- z galaxies known, such as SBS0335-052E (Izotov et al. 2009), J0811+4730 (Izotov et al. 2018), or A198691 (Hirschauer et al. 2016). In summary, the physical conditions of the $[\text{OIII}]$ emitting gas in low metallicity and metal poor galaxies favour electron densities above 100 cm^{-3} , and temperatures well above 10^4 K , and closer to $2 \times 10^4 \text{ K}$. Therefore, following the dependence of $R([\text{OIII}])$ with temperature and density, the spectral templates are normalized in flux with two different $R([\text{OIII}])$ ratios, $R([\text{OIII}]) = 6.5$ for the

⁴ Throughout the paper a value of 8.69 is assumed for the solar abundance as given by Asplund et al. (2009)

low-metallicity, i.e. $0.2 Z_{\odot}$, template and $R([\text{OIII}]) = 10$ for the metal-poor, i.e. $0.04-0.02 Z_{\odot}$, templates.

The width of the emission lines in the templates is simulated by a gaussian with the Full Width at Half Maximum (FWHM) of the $[\text{OIII}]88\mu\text{m}$ measured in each galaxy, i.e. 154 km s^{-1} for MACS1149-JD1, and 300 and 267 km s^{-1} for the components of the B14-65666 system. Finally, the templates are normalized to the $[\text{OIII}]0.5007\mu\text{m}$ flux derived from the $[\text{OIII}]88\mu\text{m}$ flux, and redshifted to the corresponding observed wavelengths. Galaxies at redshifts above 6 show a steep UV continuum slope ($\beta < -2$, Bouwens et al. 2016a), i.e. an optical extinction $A_V < 0.3 \text{ mag}$, and therefore no internal extinction correction is applied to the line fluxes in the templates.

Finally, the UV-brightest sources at $z > 7$ (Roberts-Borsani et al. 2016; Stark et al. 2017) have continuum fluxes of $0.2-0.4 \mu\text{Jy}$ at $4.5\mu\text{m}$. The 10σ sensitivity for a 10ks observation with the MRS channel 1 is $\sim 35-55 \mu\text{Jy}$ (Glasse et al. 2015), depending of the wavelength. The continuum emission is well below the detection limit of the MRS in the exposure time used here. Then the templates only contain the main optical and near-IR emission lines, in the $H\beta$ to $Pa\beta$ spectral range, without continuum emission.

3.1.2. MIRI instrument simulator: MRS raw observations

We use MIRISim (Klaassen et al. in prep.), public release 2.0.0,⁵ to perform simulated MRS observations of the EoR sources, MACS1149-JD1 and B14-65666. MIRISim is the MIRI instrument simulator able to reproduce realistic observations with the MRS, as well as with other MIRI observational modes. It takes advantage of the full information collected during the cryogenic test and calibration campaigns of MIRI, to simulate realistic Point Spread Function (PSF), detector read noise, Poisson noise, dark current, detector non-linearity, flat field, cosmic rays, fringing, as well as others observational and instrumental effects. MIRISim allows modelling of astronomical targets, combining SEDs and emission lines information with different morphologies, as well as with user-provided astronomical images. It produces the raw, uncalibrated, data that are input into the MIRI JWST calibration pipeline to obtain the calibrated data cube.

MACS1149-JD1, the lensed galaxy detected at $z = 9.11$ with ALMA, presents $[\text{OIII}] 88\mu\text{m}$ observed flux of $3 \times 10^{-18} \text{ erg s}^{-1} \text{ cm}^{-2}$ with a line width of 154 km s^{-1} (FWHM, Hashimoto et al. 2018). Its strongest optical and near-IR lines: $H\beta$, $[\text{OIII}] 0.4959, 0.5007\mu\text{m}$, $H\alpha$, and $\text{HeI } 1.087\mu\text{m}$, fall in MRS Channels 1 and 2.⁶ In order to investigate their detectability as a function of metallicity and electron temperature/density, we simulate three medium-deep (10 ks) MRS observations with different spectral templates and $R[\text{OIII}]$ ratios (see Table 3 for details). We consider MACS1149-JD1 as an unresolved source for the MRS, and located in the center of the Channel 1 Field-of-View. The solar activity, that is related with the frequency of cosmic rays events, and the instrument and sky backgrounds are set to low. A 4-point dither pattern is used to generate the MRS observations. Each of the dither pointings consists of 35 groups, 3 integrations, and 1 exposure in SLOW read-out mode, which gives 2.5 ks of integration per pointing, for a total of 10 ks on-source

⁵ Public and stable MIRISim releases are available at http://miri.ster.kuleuven.be/bin/view/Public/MIRISim_Public.

⁶ MRS have wavelength ranges in Channel 1 ($4.89 < \lambda_{\text{obs}}[\mu\text{m}] < 7.66$) and Channel 2 ($7.49 < \lambda_{\text{obs}}[\mu\text{m}] < 11.71$), and its resolving power ranges are $2750 < \lambda/\Delta\lambda < 3610$.

Table 2. Spectral templates for MRS simulations of EoR sources.

Template	Metallicity ($12+\log(\text{O}/\text{H})$)	Source	H β 0.4861	[OIII]0.5007 0.4959	H α 0.6563	[NII]0.6583 0.6583	[SII]0.6716 + 0.6731 0.6716 + 0.6731	[SIII]0.9069 0.9069	[SIII]0.9532 0.9532	Pa- ϵ 0.9550	Pa- δ 1.005	HeI 1.087	Pa- γ 1.093	Pa- β 1.282
TM_0.2_solar ^(a)	8.02 ^(c)	blue dwarfs	0.19	0.33	0.52	0.018	0.042	0.021	0.057	0.006	0.010	0.068	0.015	0.026
TM_0.04_solar ^(a)	7.29	SBS0335-052E	0.33	0.33	0.91	0.002	0.014	0.010	0.022	0.012	0.016	0.088	0.024	0.040
TM_0.02_solar ^(b)	6.98	J0811+4130	0.61	0.34	1.68	0.004	0.014	—	—	—	—	0.14 ^(d)	—	—

Note: Line ratios are normalized to the flux of [OIII]0.5007 μm emission line.

References: Izotov & Thuan (2011)^(a) and Izotov & Thuan (2011)^(b)

^(c) Average of O/H values from II Zw 40, Mrk 71, Mrk 930, and Mrk 996. Their metallicity range is $7.85 < 12 + \log(\text{O}/\text{H}) < 8.10$.

^(d) The template TM_0.02_solar does not include emission lines redder than [SII] 0.6731 μm , because optical spectral lines are only available. The HeI 1.087 μm flux have been calculated from HeI 0.5876 μm , using the line ratio (HeI 1.087 μm /HeI 0.5876 μm) derived using the templates TM_0.2_solar and TM_0.02_solar.

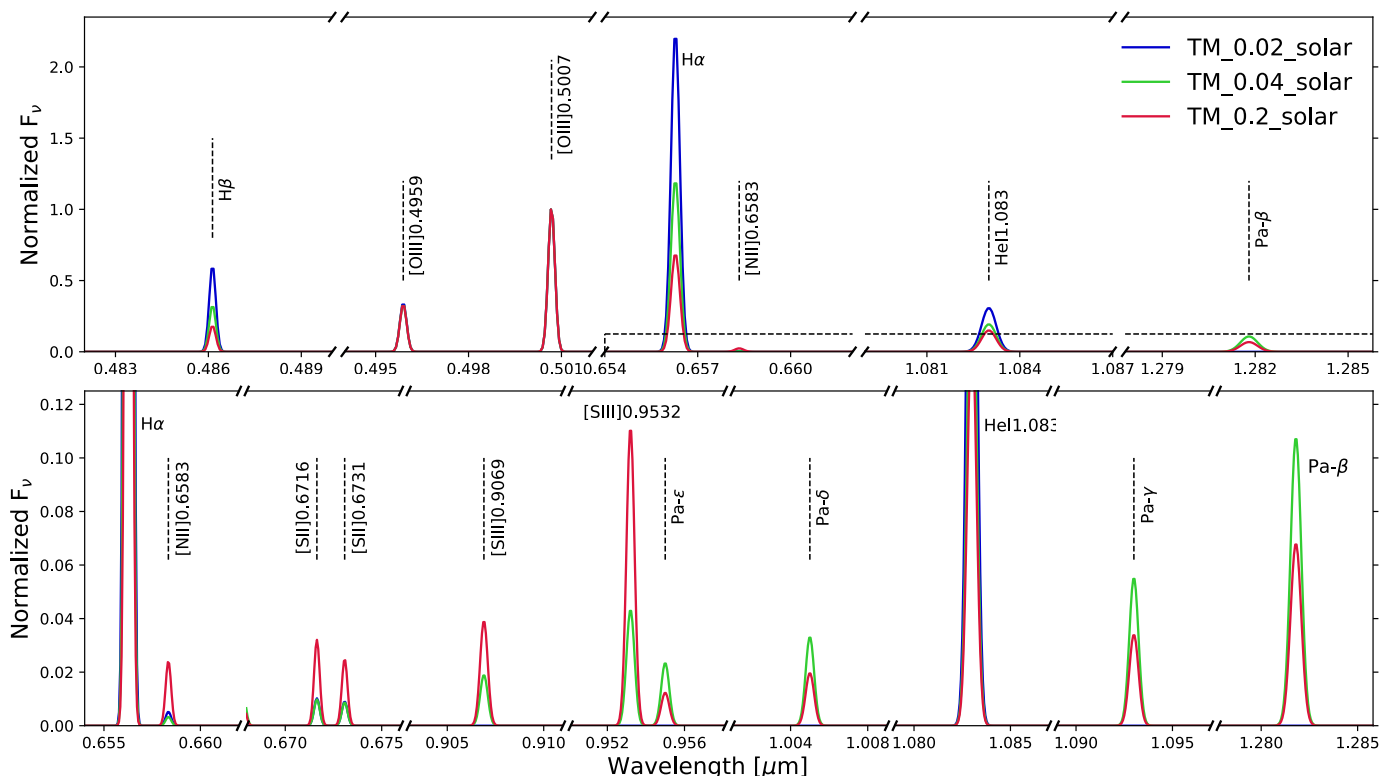


Fig. 3. Spectral templates used on the MRS simulated observations (see Table 2 for details). Upper panel shows the brightest optical and near-IR emission lines in the range from H β to Pa β . The bottom panel is a zoom-in of the dashed line rectangle shown in the upper panel, and illustrate the fainter optical and near-IR emission lines in the range from H α to Pa β . The spectra have a line width of 154 km s⁻¹ (FWHM), are normalized to the peak of the [OIII]0.5007 μm emission line, and the continuum is set to zero.

integration time per MRS spectral setting⁷. Note that a MRS spectral setting (SHORT, MEDIUM, or LONG) covers one-third of the available wavelength range in each channel, therefore the three different spectral settings are needed for full spectral coverage. For MACS1149-JD1 simulations, we use two spectral settings, SHORT and LONG.

B14-65666, the interacting/merging system at redshift of $z = 7.15$, is composed of two UV-bright sources with a projected separation of 2-4 kpc. The system presents a total integrated [OIII] 88 μm flux of 21.8×10^{-18} erg s⁻¹ cm⁻². We simulate a deep (40 ks) Channels 1 and 2 MRS observation to investigate the possibility of detecting H α and other weak optical and near-IR emission lines ([NII]0.6583 μm , [SII] 0.6716, 0.6731 μm , [SIII] 0.9069, 0.9532 μm , Paschen series). B14-65666 is simu-

⁷ Information about wavelength coverage, spectral setting, spatial resolution, dithering pattern, detector read-out mode and exposure time for the MRS is at <https://jwst-docs.stsci.edu/display/JTI/MIRI+Medium+Resolution+Spectroscopy>

lated combining two unresolved sources with a separation of 1". The full extension in [OIII]88 μm is 0.84", and the separation between clumps in rest-frame UV is around 0.5". Since the optimal deblending of two sources in the MRS observations is out of the scope of this paper, the separation between clumps has been increased to reduce the confusion. B14-65666_0.2_solar is simulated at a redshift of 7.153, with [OIII] 88 μm flux of 13.5×10^{-18} erg s⁻¹ cm⁻², R[OIII] of 6.5, and a line width of ~ 325 km s⁻¹ (FWHM). B14-65666_0.04_solar is simulated at a redshift of 7.1482, with [OIII] 88 μm flux of 8.3×10^{-18} erg s⁻¹ cm⁻², R[OIII] of 10, and a line width of ~ 267 km s⁻¹ (FWHM). Note that an offset in velocity between the two components have been included as presented in Hashimoto et al. (2019). A different spectral template and R[OIII] ratio is used for each component to analyze the detectability of the lines with different metallicity and physical conditions (see Table 3). The solar activity and the instrument and sky background are set to low. A 8-point dither pattern is used to generate the

MRS observations. Each of the dither pointings consists of 35 groups, 3 integrations, and 2 exposures in SLOW read-out mode, which gives 5 ks of integration per pointing, and a total of 40 ks on-source integration time per MRS spectral setting (SHORT, MEDIUM and LONG).

EoR sources are expected to have sizes of less than 1 kpc (Shibuya et al. 2019), and therefore are point-like sources for the MRS PSF⁸, galaxies at lower redshifts would be larger in size, with a median radius of 2.2 kpc (Ribeiro et al. 2016). This would imply a dilution of the observed flux over a larger number of spaxels, and therefore would require these galaxies to be treated as extended sources with a specific light profile and clumpiness in the simulations.

Alternatively, the SED-fitting SFRs could be used to derive the H α emission (Kennicutt 1998). MACS1149-JD1 and B14-65666 system have a intrinsic SFRs of 4.2 and 200 M $_{\odot}$ yr $^{-1}$ that is equivalent to observed H α fluxes of 8 and 67 $\times 10^{-18}$ erg s $^{-1}$ cm $^{-2}$, respectively. The predicted H α fluxes are in well agreement with the low-metallicity templates derived using the methodology presented in Sect. 3.1.1.

Table 3. Properties of the MACS1149-JD1 and B14-65666 MRS simulated templates

Simulated_Spectrum	Template	R[OIII] ⁽¹⁾	F _[OIII] ⁽²⁾	F _{Hα} ⁽²⁾
MACS1149_0.2_solar	TM_0.2_solar	6.5	19.5	10.1
MACS1149_0.04_solar	TM_0.04_solar	10	30	27.3
MACS1149_0.02_solar	TM_0.02_solar	10	30	50.7
B14-65666_0.2_solar	TM_0.2_solar	6.5	87.7	45.5
B14-65666_0.04_solar	TM_0.04_solar	10	83.2	75.6

⁽¹⁾ R[OIII] = F([OIII]0.5007 μ m)/F([OIII]88 μ m)

⁽²⁾ Flux given in units of 10 $^{-18}$ erg s $^{-1}$ cm $^{-2}$

3.1.3. Calibration of MRS observations

The MACS1149-JD1 and B14-65666 MIRISim simulated MRS observations are calibrated with the JWST calibration pipeline (release 0.9.6).⁹ The pipeline is divided in three different processing stages. The first stage performs a detector-level correction, where the MRS observations are corrected for saturation, linearity, and dark current. It also applies the jump detection and ramp-fitting modules to transform the raw MRS ramps observations to slope detector products. We use a rejection threshold of 1.75 σ to identify the jumps between adjacent frames and correct the cosmic ray events. The selected rejection threshold is optimized to produce the best S/N on the final calibrated spectrum. The modification of the rejection threshold from 4 σ to 1.75 σ produces variations of S/N in factors of ~ 1.5 and ~ 1.25 for Channel 1 and 2, respectively. These variations are likely to be relevant during on-orbit operations as the solar activity, and therefore changes in the density and energy of cosmic rays, could have different residual effects in the calibrated data. The second stage corrects the slope products from flat-field and fringes, assigns the coordinate system, and produces a photometric calibration at individual exposure level. Note that the pipeline and MIRISim use the same reference file to simulate and calibrate the fringes effect. It could under-estimate the fringes residual in

⁸ FWHM $\sim 0.31''$ - $0.42''$ depending on the Channel, see Wells et al. 2015 for an extensive explanation of the PSF dependence with the wavelength

⁹ More information about the JWST pipeline see <https://jwst-docs.stsci.edu/display/JDAT/JWST+Data+Reduction+Pipeline>

the final MRS simulated spectra, which are expected to be lower than 2%. The third stage combines the different dither exposures to create a 3D spectral cube. The final cubes have a spatial and spectral resolution of 0.196" \times 0.196" \times 0.001 μ m for Channel 1, and 0.196" \times 0.196" \times 0.002 μ m for Channel 2. Figure 4 is an example of the MRS calibrated 3D spectral cubes, and illustrates the integrated H α map of the simulated B14-65666 system (see detailed explanations and caveats in Sect. 3.1.2).

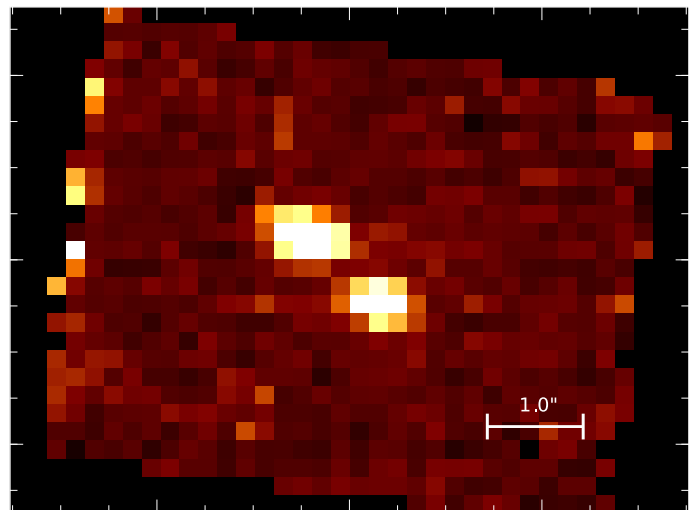


Fig. 4. Simulated B14-65666 system. It illustrates the integrated H α map for a deep (40ks) MRS observations, where two components have been simulated as Point-like source separated 1", and with metallicities of 0.2 and 0.04 Z $_{\odot}$.

3.1.4. Extraction and analysis of 1D MRS spectra

The 1D spectra are obtained by performing circular aperture photometry with a radius equal to the PSF FWHM ($r \sim 0.31''$ - $0.42''$ depending on the Channel). The subtracted background is obtained in an annulus from 0.78" to 1.37" centered in the source. An aperture correction is applied to obtain the final 1D calibrated spectra. The aperture correction is calculated by combining simulated bright point sources on MIRISim and the PSF model obtained during the test and calibration campaigns of MIRI. The aperture correction is calculated in each wavelength of the spectral cube, the channel 1 presents values from 1.59 to 1.69 and channel 2 from 1.64 to 1.89.

The emission line fluxes are derived by fitting a single Gaussian model to the line profile. The fit is performed within a spectral range equal to 0.1 μ m and 0.14 μ m for Channel 1 and 2, respectively. If the defined spectral range contains more than one emission line, we use a multiple Gaussian model to simultaneously fit the different line profiles. To estimate the flux error of each emission line, we implement a Monte Carlo method. We measure the noise of the spectra as the root mean square (rms) of the residuals after subtracting the derived Gaussian profile. The noise is used to generate N ($N = 3000$) new spectra, where a random Gaussian noise with a sigma equal to the rms is added to the original spectrum and the lines are again fitted. The error of the measurements is obtained as the standard deviation of the N derived fluxes. Tables 4 and 5 contain the derived integrated fluxes and uncertainties for the optical and near-IR emission lines analyzed in the simulated MACS1149-JD1 and B14-65666 MRS observations.

Table 4. Derived emission line fluxes for the MACS1149-JD1 simulated spectra.

Simulated_Spectrum ^(a)	H β	[OIII]	[OIII]	H α	HeI
	0.4861	0.4959	0.5007	0.6563	1.087
MACS1149_0.2_solar	3.1 \pm 0.7	5.4 \pm 0.7	18.8 \pm 0.7	9.2 \pm 0.5	2.0 \pm 0.4
MACS1149_0.04_solar	9.1 \pm 0.7	9.5 \pm 0.7	28.6 \pm 0.7	25.0 \pm 0.5	2.2 \pm 0.4
MACS1149_0.02_solar	16.7 \pm 0.7	9.7 \pm 0.7	30.0 \pm 0.7	44.8 \pm 0.5	3.9 \pm 0.4

Note: the fluxes and noise for all emission lines and metallicities correspond to an exposure time of 10ks.

^(a) flux given in units of 10^{-18} erg s $^{-1}$ cm $^{-2}$

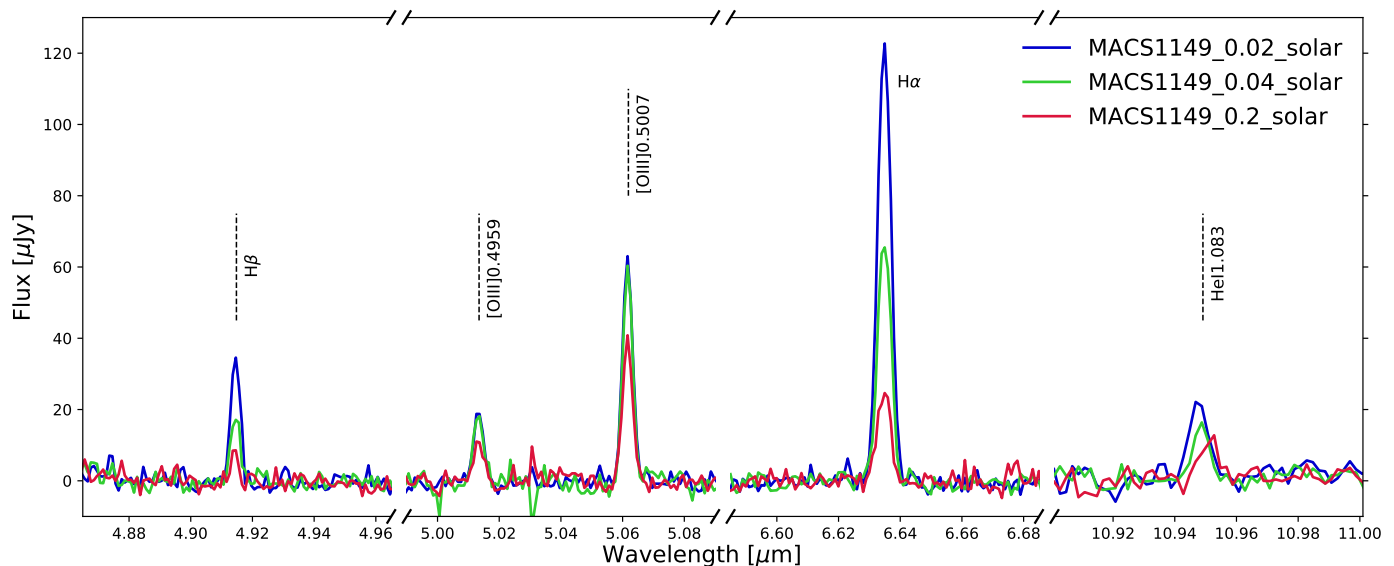


Fig. 5. Simulated medium-deep (10ks) MRS observation of MACS1149-JD1 at a redshift of 9.11. It illustrates the simulated spectrum with metallicities of $0.02 Z_{\odot}$ (blue), $0.04 Z_{\odot}$ (green), and $0.2 Z_{\odot}$ (red). The main emission lines are identified with dashed lines, and their derived integrated fluxes can be found in Table 4.

The absolute fluxes of the emission lines detected with high significance ($S/N > 10$) are in agreement with the input values with average deviations lower than 10%¹⁰. The same emission lines, those with $S/N > 10$, are also used to investigate the S/N differences between the JWST exposure time calculator (ETC)¹¹ and the MRS simulated observations based on the combination of MIRISim and JWST pipeline. The ETC provides mean S/N values of 25% and 6% lower than those derived from respectively the medium-deep (10ks) and deep (40ks) MRS simulated observations for channel 1 and 2. As we commented in Sect. 3.1.3, the tuning of the configuration parameters of the JWST pipeline produces variations in the S/N of the final 1D spectrum. This level of difference is expected as the ETC, MIRISim, and JWST pipeline approximate our current best knowledge and understanding of the performance of MIRI, and remaining uncertainties associated with noise properties, cosmic ray effects, and pipeline processing are still under study, and will be revised with in orbit commissioning data.

3.2. Exploring the physical properties of EoR [OIII]88 μ m line emitters

MRS simulated 1D spectra of the [OIII]-emitters MACS1149-JD1 and B14-65666 are analysed to investigate the detectabil-

¹⁰ The absolute photometric calibration uncertainties reported by the MIRISim team are at <http://miri.ster.kuleuven.be/bin/view/Public/MIRISimPublicReleases>

¹¹ <https://jwst.etc.stsci.edu/>

ity of their main optical and near-IR emission lines, and the prospects of inferring key physical properties such as the instantaneous star-formation rates, ionization and Ly α escape fractions, shape/hardness of the ionizing continuum, metallicity, as well as others physical properties.

3.2.1. EoR lensed sources: MACS1149-JD1

MACS1149-JD1, as already mentioned in Sect. 3 and Table 1, is a lensed galaxy recently detected in [OIII]88 μ m at a redshift of 9.11. The intrinsic properties, SFR of $4.2 M_{\odot} \text{ yr}^{-1}$, and sSFR of 4 Gyr^{-1} place it in the upper SFR range of FIRSTLIGHT galaxies at redshift of 9, but in the lower end of the sSFR as the total estimated stellar mass is $1.1 \times 10^9 M_{\odot}$ (Hashimoto et al. 2018). Figure 5 shows the simulated (10 ks) MRS spectra for a MACS1149-JD1-like source using three different metallicities (0.2, 0.04, and $0.02 Z_{\odot}$) and R[OIII] values, covering the expected range of metallicities and excitation conditions in the ionized gas at a redshift of 9.11. The 1D extracted spectra containing the brightest optical emission lines (H β , [OIII]0.4959, 0.5007 μ m, H α , and HeI.087 μ m), shows the detection of all lines at a significance level higher than 4σ at different metallicities. In particular, we obtain $S/N \sim 5-24$, $8-42$, $18-90$, and $5-10$ for the integrated fluxes of H β , [OIII]0.4959, 0.5007 μ m, H α , and HeI.083 μ m emission lines, respectively.

Thanks to the additional magnification factor due to lensing, the MRS spectra illustrate important results for strong [OIII]

Table 5. Derived emission line fluxes for the simulated spectra of the B14-65666 system.

Simulated_Spectrum ^(a)	H α 0.6563	[NII] 0.6583	[SII] 0.6716 + 0.6731	[SIII] 0.9069	[SIII] 0.9532	Pa- ϵ 0.9550	Pa- δ 1.005	HeI 1.087	Pa- γ 1.093	Pa- β 1.282
B14-65666_0.2_solar	46.1 \pm 0.6	1.1 \pm 0.4	4.7 \pm 0.6	1.8 \pm 0.3	5.0 \pm 0.3	<0.9 ^(b)	0.9 \pm 0.2	5.7 \pm 0.3	1.1 \pm 0.3	2.6 \pm 0.3
B14-65666_0.04_solar	77.0 \pm 0.6	<1.2 ^(b)	<1.8 ^(b)	0.8 \pm 0.3	1.9 \pm 0.3	1.3 \pm 0.3	1.4 \pm 0.2	6.9 \pm 0.3	2.2 \pm 0.3	3.5 \pm 0.3

Note: the fluxes and noise for all emission lines and metallicities correspond to an exposure time of 40ks.

^(a) flux given in units of 10^{-18} erg s $^{-1}$ cm $^{-2}$

^(b) 3σ upper-limits.

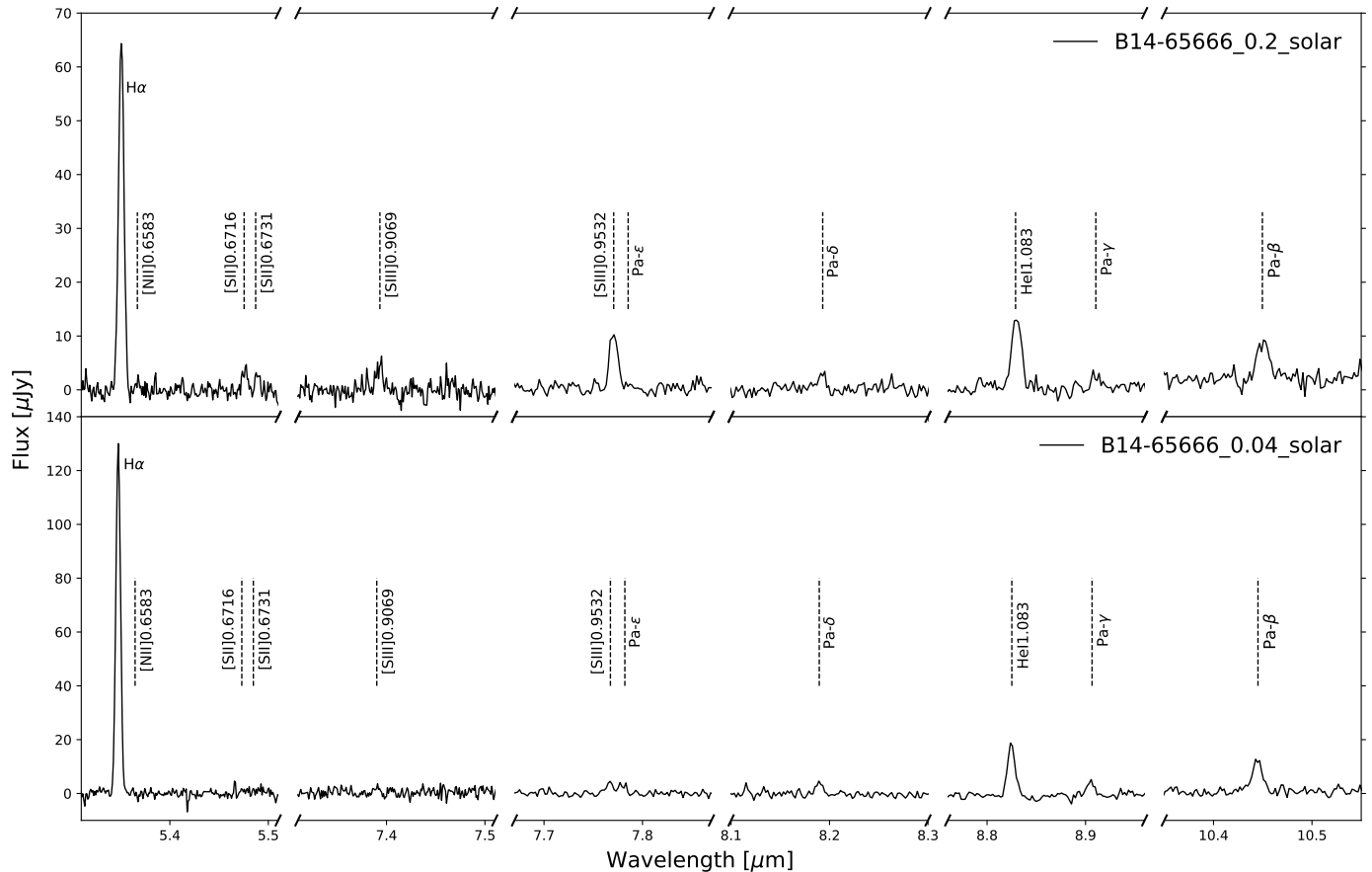


Fig. 6. Simulated deep (40 ks) MRS observation of B14-65666 at a redshift of 7.15. Upper panel shows the spectrum for one of the components assuming a metallicity $0.2 Z_{\odot}$ (B14-65666_0.2_solar), and the bottom panel for the second component with a lower metallicity of $0.04 Z_{\odot}$ (B14-65666_0.04_solar). The emission lines are identified with a dashed line, and their derived integrated fluxes can be found at Table 5.

$88\mu\text{m}$ line emitters at the highest redshifts (i.e. $z > 9$). First, for a given [OIII] $88\mu\text{m}$ luminosity, the [OIII] $0.5007\mu\text{m}$ and H α lines will be most luminous for the lowest metallicity, and therefore would be detected with the highest significance at $0.02Z_{\odot}$. This effect is mainly due to the expected increase in the electron temperature of the ionized gas, and therefore the R[OIII] decreases with metallicity from sub-solar to metal-poor (see Sect. 3.1.1). Second, additional detection of the H β emission line provides the opportunity to set direct quantitative constraints in key physical aspects of these galaxies like the internal extinction ($H\alpha/H\beta$ ratio) and the total instantaneous star formation rate ($H\alpha$). Third, the detection of both H α and HeI $1.083\mu\text{m}$, the strongest HeI in the entire UV to near-IR spectral range, will provide unique information on the hardness of the ionizing source, even for the lowest metallicity sources. The ratio of ionizing photons can be derived as

$$\frac{N_{ph} [> 13.6\text{eV}]}{N_{ph} [> 24.6\text{eV}]} = (0.89 - 2.10) \times \frac{L[H\alpha]}{L[HeI1.083\mu\text{m}]} \quad (2)$$

after extinction correction, and assuming emissivities for hydrogen (Osterbrock 1989), and HeI (Benjamin et al. 1999; Porter et al. 2005) for electron densities of 100 cm^{-3} and temperatures of $1-2 \times 10^4$ K, similar to those measured in low metallicity, low- z galaxies (Izotov et al. 2014). However, as the HeI $1.083\mu\text{m}$ emissivity has a strong dependence with the electron density (factors 6 to 8 for densities in the $10^2 - 10^4\text{ cm}^{-3}$ range), a measure of the electron density (e.g. [SII] $0.6717+0.6731\mu\text{m}$ optical lines or [OIII] $52,88\mu\text{m}$ far-IR lines) is required to get an accurate value for the hardness of the ionizing source. For an instantaneous starburst and a given metallicity, the ratio of ionizing photons is a strong function of age with a drop of photons with energies above 24.6 eV relative to 13.6 eV for ages older than 6 Myr. Binaries (Eldridge et al. 2017) could also be playing a relevant role in changing the hardness of the ionizing spectrum in these galaxies, in particular at low metallicities. The presence of a low-luminosity AGN could also produce an ionizing spectrum harder than the predicted from stars only.

In addition, if Ly α measurements are available, the MIRI-MRS H α observed flux and the H α /H β derived internal extinction measurement, will provide a measurement of the Ly α escaping fraction:

$$F_{esc}[Ly\alpha] = \frac{F_{obs}[Ly\alpha]}{F_{int}[Ly\alpha]} = \frac{F_{obs}[Ly\alpha]}{R(Ly\alpha, H\alpha) \times F_{int}[H\alpha]}, \quad (3)$$

where $F_{obs}[Ly\alpha]$ is the observed Ly α flux (at $z > 6$, $F_{obs}[Ly\alpha]$ will also depend on the intergalactic medium (IGM) transmission, so that $F_{obs}[Ly\alpha] = F_{em}[Ly\alpha] \times T_{Ly\alpha}^{IGM}$, where $F_{em}[Ly\alpha]$ is the emitted Ly α flux and $T_{Ly\alpha}^{IGM}$ is the IGM transmission to Ly α photons, e.g., Inoue et al. 2014), $F_{int}[H\alpha]$ is the intrinsic H α emission after correction for internal extinction, and $R(Ly\alpha, H\alpha)$ is the theoretical recombination case B value assumed to be 8.7 for the typical electron densities ($\text{few} \times 10^2 \text{ cm}^{-3}$ and temperatures $< 2 \times 10^4 \text{ K}$). Likewise, as the H α line is the least affected by extinction of all the optical hydrogen recombination lines, it provides a more accurate estimate of the escape fraction of ionizing photons (e.g. Matthee et al. 2017) when combined with the observed rest-frame $< 912\text{\AA}$ photometry from existing HST or future NIRCam/JWST imaging.

Finally, the high SNR of [OIII]0.5007 μm and H α emission lines opens the possibility of detecting the presence of ionized gas outflows. Although out of the scope of the present paper, preliminary simulations show that massive ionized outflows ($> 10^7 M_{\odot}$, blue-shifted by $\sim 300 \text{ km s}^{-1}$, and with terminal velocities of 650-700 km s^{-1}) could be traced by the H α line in metal-poor sources similar to MACS1149-JD1 (Colina et al. in prep.)

3.2.2. UV-bright and massive EoR sources: B14-65666

B14-65666, as already mentioned in Sect. 3 and Table 1, is a strong [OIII]88 μm line emitter at a redshift of 7.15 detected with ALMA also as a [CII]158 μm source (Hashimoto et al. 2019). This UV-bright source ($M_{UV} \sim -22.3$), is identified with a system of two galaxies, likely interacting/merging. Its derived global properties with a total SFR of 200 $M_{\odot} \text{ yr}^{-1}$, an stellar mass of $7.7 \times 10^8 M_{\odot}$, a low visual extinction ($A_V = 0.3 \text{ mag}$), and sSFR of 259 Gyr^{-1} places it among the most massive star-forming galaxies known at a redshift above 7, excluding Quasi-Stellar Objects (QSOs). At such it provides with an extraordinary opportunity for the detection of faint metallic lines ([NII]0.6584 μm , [SII]0.6717, 0.6731 μm , and [SIII]0.9069, 0.9532 μm), and therefore establishing strong constraints on the metallicity of the ionized gas in addition to the physical properties already mentioned in Sect. 3.2.1. Figure 6 shows the deep (40 ks) MRS simulated spectra of B14-65666 assuming, for the purpose of this simulation, that one of the components of the system has a metallicity of 0.2 Z_{\odot} (upper panel), while the metallicity for the second component is 0.04 Z_{\odot} (bottom panel). For the 0.2 Z_{\odot} spectrum, the weak [NII]0.6584 μm and [SII]0.6717, 0.6731 μm integrated emission lines are detected at about 3σ level while the [SIII]0.9069, 0.9532 μm integrated lines are detected at 6 and 17 σ , respectively. On the other hand, the 0.04 Z_{\odot} spectrum shows no detection (at 3σ level) of neither [NII]0.6584 μm nor [SII]0.6717, 0.6731 μm , while the [SIII]0.9069, 0.9532 μm lines are detected at 3 and 7 σ , respectively. Thus, the metallicity of luminous [OIII]88 μm emitters detected by ALMA, or other JWST instruments (e.g. NIRSpec) could be explored in full, not only using the standard R23, but all the different optical tracers, including the N2, S2, N2S2H α , N2S2, as well as the combined O3N2, O3S2 and S23 ratios (see Maiolino & Mannucci 2019 for a review).

4. Conclusions

This paper has presented a study of the H α fluxes predicted by state-of-the-art FIRSTLIGHT cosmological simulations for galaxies at redshifts of 6.5 to 10.5, covering the Epoch of Reionization, and of its detectability with the medium resolution spectrograph (MRS) of the mid-IR instrument (MIRI) on JWST. The paper has investigated the MRS detectability of the FIRSTLIGHT sources as a function of redshift, star formation rate, stellar mass, and specific star formation. In addition, it has presented realistic MRS simulated observation of the (rest-frame) optical and near-infrared spectra of EoR sources recently detected by ALMA as [OIII]88 μm emitters. These include the lensed source MACS1149-JD1, and the interacting/merger candidate B14-65666 at redshift of 9.11 and 7.15, respectively. These simulations cover different metallicities and emission line ratios, and are based on medium-deep (10ks) and deep (40ks) MRS observations using the current versions of the MIRI instrument simulator (MIRISim), and of the official JWST calibration pipeline. The main conclusions are:

1. All currently ALMA-detected [OIII]88 μm emitters at redshifts above 7 can be detected in the H α line with MRS spectroscopy in a few hours (10 ks) with a high significance (i.e. with $S/N > 5\sigma$).
2. Deep integrations (40 ksec) with MRS will detect (at least at 5σ level) H α emission line in EoR sources at redshifts above 7 with a SFR above $\sim 2 M_{\odot} \text{ yr}^{-1}$, stellar masses above $\sim 4-9 \times 10^7 M_{\odot}$, and specific star formation above 4 Gyr^{-1} . These limits cover the upper end of the SFR and stellar mass distribution at those redshifts, representing $\sim 6\%$ and $\sim 1\%$ of the predicted FIRSTLIGHT population at the 6.5-7.5 and 7.5-8.5 redshift ranges, respectively.
3. The FIRSTLIGHT population is dominated by numerous low mass galaxies with faint H α emission for JWST spectroscopy, characterized by median values of $\bar{F}(H\alpha) = 3.8, 2.4, \text{ and } 1.5 \times 10^{-20} \text{ erg s}^{-1} \text{ cm}^{-2}$ in the redshift intervals of 6.5-7.5, 7.5-8.5, and $z > 8.5$, respectively. However, there is a fraction of galaxies showing much higher fluxes around $F(H\alpha) \sim 10^{-18} - 10^{-17} \text{ erg s}^{-1} \text{ cm}^{-2}$ being accessible to observe with MIRI/JWST spectroscopy.
4. MRS will provide a good S/N H β ($5-24\sigma$) - H α ($18-90\sigma$) emission line spectra of sources similar to the MACS1149-JD1 at a redshift of 9.11 in exposures of a few hours ($\sim 10\text{ks}$), for metallicity 0.2-0.02 Z_{\odot} . This example illustrates clearly the possibility of performing detailed studies of intrinsically bright or lensed sources even at the beginning of the Epoch of Reionization.
5. The MRS will be able to establish and put strong limits to the metallicity of bright EoR sources as demonstrated by the simulated B14-65666 system at 7.15 with metallicities 0.2 and 0.04 Z_{\odot} . This will be achieved by adding the optical metallicity tracers (N2, S2, N2S2H α and N2S2) to the standard R23.
6. A measure of the hardness of the ionizing spectrum, $N_{ph}(>912\text{\AA})/N_{ph}(>504\text{\AA})$, can be derived directly from the $L(H\alpha)/L(\text{HeI}, 0.83\mu\text{m})$ line ratio, if electron density is known. This measure of the hardness will constrain the nature of the ionization source, i.e. the age and IMF upper mass limit of the stellar population, or the presence of a low luminosity AGN.

As shown in this paper, the prospects of detecting the H α emission line with very high S/N (> 50) in at least bright (intrinsic or lensed) sources at redshifts of 7 to 9, opens the opportunity

of investigating the presence and properties of outflows of ionized gas in galaxies during the Epoch of Reionization.

Acknowledgements. The authors gratefully thank to the Referee for the constructive comments and recommendations which definitely help to improve the quality of the paper, and the EC MIRI test team and MIRISim developers to provide a great and useful tool, the MIRI instrument simulator (MIRISim). They also acknowledge to the STScI and the developer team that of the official JWST calibration pipeline. This work was supported by the Spanish Ministry for Science, Innovation and Universities project number ESP2017-83197. DC acknowledges the Gauss Center for Supercomputing for funding this project by providing computing time on the GCS Supercomputer SuperMUC at Leibniz Supercomputing Centre (Project ID: pr92za). DC supports by the state of Baden-Württemberg through bwHPC. DC is a DAWN fellow. AL acknowledges funding by the Comunidad de Madrid, Spain, under Atracción de Talento Investigador Grant 2017-T1/TIC-5213. JPP and TVT acknowledge financial support from UK Space Agency grants. A.A.-H. acknowledges support from the Spanish Ministry of Science, Innovation and Universities through grants AYA2015-64346-C2-1-P and PGC2018-094671-B-I00, which were partly funded by the FEDER program and from CSIC grant PIE201650E36. KIC acknowledges funding from the European Research Council through the award of the Consolidator Grant ID 681627-BUILDUP.

References

- Amorín, R., Pérez-Montero, E., Contini, T., et al. 2015, *A&A*, 578, A105
 Asplund, M., Grevesse, N., Sauval, A. J., & Scott, P. 2009, *ARA&A*, 47, 481
 Barrow, K. S. S., Wise, J. H., Norman, M. L., O’Shea, B. W., & Xu, H. 2017, *MNRAS*, 469, 4863
 Benjamin, R. A., Skillman, E. D., & Smits, D. P. 1999, *ApJ*, 514, 307
 Bouwens, R. J., Aravena, M., Decarli, R., et al. 2016a, *ApJ*, 833, 72
 Bouwens, R. J., Illingworth, G. D., Oesch, P. A., et al. 2015, *ApJ*, 803, 34
 Bouwens, R. J., Smit, R., Labbé, I., et al. 2016b, *ApJ*, 831, 176
 Bowler, R. A. A., Dunlop, J. S., McLure, R. J., & McLeod, D. J. 2017, *MNRAS*, 466, 3612
 Bowler, R. A. A., Dunlop, J. S., McLure, R. J., et al. 2014, *MNRAS*, 440, 2810
 Caputi, K. I., Deshmukh, S., Ashby, M. L. N., et al. 2017, *ApJ*, 849, 45
 Carniani, S., Maiolino, R., Pallottini, A., et al. 2017, *A&A*, 605, A42
 Ceverino, D., Glover, S. C. O., & Klessen, R. S. 2017, *MNRAS*, 470, 2791
 Ceverino, D., Klessen, R. S., & Glover, S. C. O. 2018, *MNRAS*, 480, 4842
 Ceverino, D., Klessen, R. S., & Glover, S. C. O. 2019, *MNRAS*, 484, 1366
 Ceverino, D. & Klypin, A. 2009, *ApJ*, 695, 292
 Ceverino, D., Klypin, A., Klimek, E. S., et al. 2014, *MNRAS*, 442, 1545
 Chevillard, J., Curtis-Lake, E., Charlot, S., et al. 2019, *MNRAS*, 483, 2621
 Dinerstein, H. L., Lester, D. F., & Werner, M. W. 1985, *ApJ*, 291, 561
 Eldridge, J. J., Stanway, E. R., Xiao, L., et al. 2017, *PASA*, 34, e058
 Faisst, A. L., Capak, P., Hsieh, B. C., et al. 2016, *ApJ*, 821, 122
 Feltre, A., Charlot, S., & Gutkin, J. 2016, *MNRAS*, 456, 3354
 Glasse, A., Rieke, G. H., Bauwens, E., et al. 2015, *PASP*, 127, 686
 Hashimoto, T., Inoue, A. K., Mawatari, K., et al. 2019, *PASJ*, 70
 Hashimoto, T., Laporte, N., Mawatari, K., et al. 2018, *Nature*, 557, 392
 Hirschauer, A. S., Salzer, J. J., Skillman, E. D., et al. 2016, *ApJ*, 822, 108
 Inoue, A. K., Shimizu, I., Iwata, I., & Tanaka, M. 2014, *MNRAS*, 442, 1805
 Inoue, A. K., Tamura, Y., Matsuo, H., et al. 2016, *Science*, 352, 1559
 Izotov, Y. I., Guseva, N. G., Fricke, K. J., & Papaderos, P. 2009, *A&A*, 503, 61
 Izotov, Y. I. & Thuan, T. X. 2011, *ApJ*, 734, 82
 Izotov, Y. I., Thuan, T. X., & Guseva, N. G. 2014, *MNRAS*, 445, 778
 Izotov, Y. I., Thuan, T. X., Guseva, N. G., & Liss, S. E. 2018, *MNRAS*, 473, 1956
 Jung, I., Finkelstein, S. L., Dickinson, M., et al. 2019, *arXiv e-prints* [[arXiv:1901.05967](https://arxiv.org/abs/1901.05967)]
 Katz, H., Laporte, N., Ellis, R. S., Devriendt, J., & Slyz, A. 2019, *MNRAS*, 484, 4054
 Keenan, F. P. & Aggarwal, K. M. 1990, *ApJ*, 350, 262
 Kennicutt, Jr., R. C. 1998, *ApJ*, 498, 541
 Kewley, L. J., Dopita, M. A., Leitherer, C., et al. 2013, *ApJ*, 774, 100
 Kravtsov, A. V. 2003, *ApJ*, 590, L1
 Kravtsov, A. V., Klypin, A. A., & Khokhlov, A. M. 1997, *ApJS*, 111, 73
 Kroupa, P. 2001, *MNRAS*, 322, 231
 Labbé, I., Oesch, P. A., Bouwens, R. J., et al. 2013, *ApJ*, 777, L19
 Lam, D., Bouwens, R. J., Labbe, I., et al. 2019, *arXiv e-prints* [[arXiv:1902.02786](https://arxiv.org/abs/1902.02786)]
 Laporte, N., Ellis, R. S., Boone, F., et al. 2017, *ApJ*, 837, L21
 Maiolino, R. & Mannucci, F. 2019, *A&A Rev.*, 27, 3
 Mármol-Queraltó, E., McLure, R. J., Cullen, F., et al. 2016, *MNRAS*, 460, 3587
 Matthee, J., Sobral, D., Best, P., et al. 2017, *MNRAS*, 465, 3637
 Nakajima, K., Schaerer, D., Le Fèvre, O., et al. 2018, *A&A*, 612, A94
 Oesch, P. A., Bouwens, R. J., Illingworth, G. D., et al. 2015a, *ApJ*, 808, 104
 Oesch, P. A., Bouwens, R. J., Illingworth, G. D., Labbé, I., & Stefanon, M. 2018, *ApJ*, 855, 105
 Oesch, P. A., van Dokkum, P. G., Illingworth, G. D., et al. 2015b, *ApJ*, 804, L30
 Osterbrock, D. E. 1989, *Astrophysics of gaseous nebulae and active galactic nuclei*
 Pentericci, L., Fontana, A., Vanzella, E., et al. 2011, *ApJ*, 743, 132
 Porter, R. L., Bauman, R. P., Ferland, G. J., & MacAdam, K. B. 2005, *ApJ*, 622, L73
 Rasappu, N., Smit, R., Labbé, I., et al. 2016, *MNRAS*, 461, 3886
 Ribeiro, B., Le Fèvre, O., Tasca, L. A. M., et al. 2016, *A&A*, 593, A22
 Roberts-Borsani, G. W., Bouwens, R. J., Oesch, P. A., et al. 2016, *ApJ*, 823, 143
 Schaerer, D. & de Barros, S. 2009, *A&A*, 502, 423
 Shibuya, T., Ouchi, M., Harikane, Y., & Nakajima, K. 2019, *ApJ*, 871, 164
 Smit, R., Bouwens, R. J., Carniani, S., et al. 2018, *Nature*, 553, 178
 Smit, R., Bouwens, R. J., Franx, M., et al. 2015, *ApJ*, 801, 122
 Smit, R., Bouwens, R. J., Labbé, I., et al. 2016, *ApJ*, 833, 254
 Stark, D. P., Ellis, R. S., Charlot, S., et al. 2017, *MNRAS*, 464, 469
 Stark, D. P., Schenker, M. A., Ellis, R., et al. 2013, *ApJ*, 763, 129
 Stefanon, M., Labbé, I., Bouwens, R. J., et al. 2017, *ApJ*, 851, 43
 Tamura, Y., Mawatari, K., Hashimoto, T., et al. 2019, *ApJ*, 874, 27
 Thuan, T. X. & Izotov, Y. I. 2005, *ApJS*, 161, 240
 Wells, M., Pei, J.-W., Glasse, A., et al. 2015, *PASP*, 127, 646
 Wright, G. S., Wright, D., Goodson, G. B., et al. 2015, *PASP*, 127, 595
 Zheng, W., Postman, M., Zitrin, A., et al. 2012, *Nature*, 489, 406
 Zitrin, A., Labbé, I., Belli, S., et al. 2015, *ApJ*, 810, L12