

## K2-141 b

### A $5-M_{\oplus}$ super-Earth transiting a K7 V star every 6.7 h<sup>★,★★</sup>

O. Barragán<sup>1</sup>, D. Gandolfi<sup>1</sup>, F. Dai<sup>2,3</sup>, J. Livingston<sup>4</sup>, C. M. Persson<sup>5</sup>, T. Hirano<sup>6</sup>, N. Narita<sup>4,7,8</sup>, Sz. Csizmadia<sup>9</sup>, J. N. Winn<sup>3</sup>, D. Nespral<sup>10,11</sup>, J. Prieto-Arranz<sup>10,11</sup>, A. M. S. Smith<sup>9</sup>, G. Nowak<sup>10,11</sup>, S. Albrecht<sup>12</sup>, G. Antoniciello<sup>1</sup>, A. Bo Justesen<sup>12</sup>, J. Cabrera<sup>9</sup>, W. D. Cochran<sup>13</sup>, H. Deeg<sup>10,11</sup>, Ph. Eigmüller<sup>9</sup>, M. Endl<sup>13</sup>, A. Erikson<sup>9</sup>, M. Fridlund<sup>5,14</sup>, A. Fukui<sup>15</sup>, S. Grziwa<sup>16</sup>, E. Guenther<sup>17</sup>, A. P. Hatzes<sup>17</sup>, D. Hidalgo<sup>10,11</sup>, M. C. Johnson<sup>18</sup>, J. Korth<sup>16</sup>, E. Palle<sup>10,11</sup>, M. Patzold<sup>16</sup>, H. Rauer<sup>9,19</sup>, Y. Tanaka<sup>4</sup>, and V. Van Eylen<sup>14</sup>

(Affiliations can be found after the references)

Received 31 October 2017 / Accepted 11 January 2018

#### ABSTRACT

We report on the discovery of K2-141 b (EPIC 246393474 b), an ultra-short-period super-Earth on a 6.7 h orbit transiting an active K7 V star based on data from *K2* campaign 12. We confirmed the planet's existence and measured its mass with a series of follow-up observations: seeing-limited MuSCAT imaging, NESSI high-resolution speckle observations, and FIES and HARPS high-precision radial-velocity monitoring. K2-141 b has a mass of  $5.31 \pm 0.46 M_{\oplus}$  and radius of  $1.54^{+0.10}_{-0.09} R_{\oplus}$ , yielding a mean density of  $8.00^{+1.83}_{-1.45} \text{ g cm}^{-3}$  and suggesting a rocky-iron composition. Models indicate that iron cannot exceed  $\sim 70\%$  of the total mass. With an orbital period of only 6.7 h, K2-141 b is the shortest-period planet known to date with a precisely determined mass.

**Key words.** planetary systems – planets and satellites: individual: EPIC 246393474 b – stars: fundamental parameters – stars: individual: EPIC 246393474 – techniques: photometric – techniques: radial velocities

#### 1. Introduction

Short-period ( $P_{\text{orb}} \lesssim 10$  days) exoplanets are interesting and convenient targets for radial velocity (RV) follow-up observations. The shorter the period, the larger the amplitude of the Doppler reflex motion induced by the planet on its host star, and the easier it is to sample the orbital motion in an observing campaign. This helps to explain why the ultra-short-period (USP;  $P < 1$  day) planets have often been the targets of recent RV programs. With periods shorter than 1 day, and sizes almost always smaller than  $2 R_{\oplus}$ , transiting USP planets offer relatively easy access to knowledge of the properties of terrestrial-sized objects (Sanchis-Ojeda et al. 2014). The radius domain of USP planets includes the gap between 1.5 and  $2 R_{\oplus}$  in the bimodal distribution found in the *Kepler* sample by Fulton et al. (2017). Van Eylen et al. (2017) found a similar result using a small sample with stellar parameters coming from asteroseismology measurements, which includes transiting planets with radius determinations of  $\sim 3\%$ . This gap has been predicted by photo-evaporation models (e.g., Lopez & Fortney 2014; Owen & Wu 2013), in which

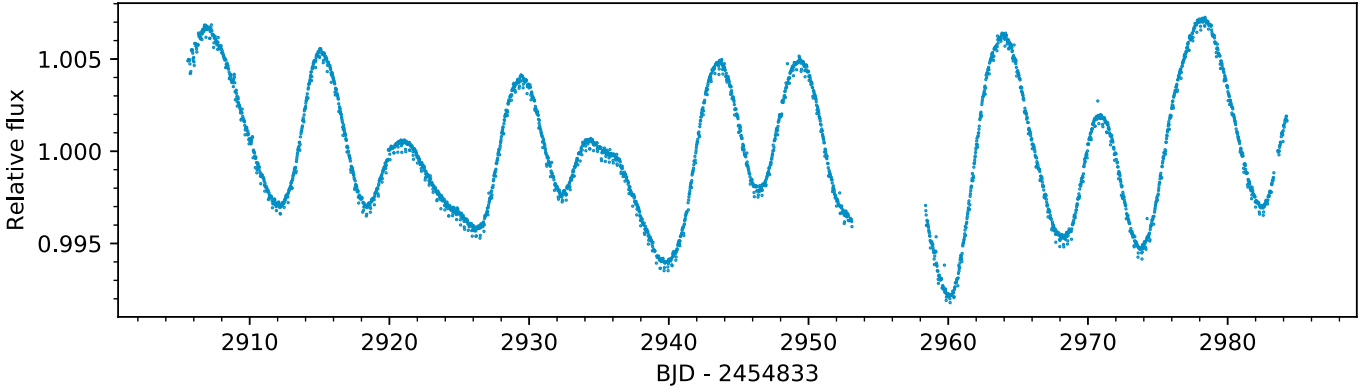
close-in planets can lose their entire atmospheres due to stellar irradiation. In this context, USP planets are expected to be atmosphere-free, bare, solid planets. Accurate mass measurements of transiting USP planets will be helpful to test this theory. They may also help to determine whether there is substantial variation in the balance of rock and iron in terrestrial planets (e.g., Pepe et al. 2013; Gandolfi et al. 2017; Guenther et al. 2017).

Sanchis-Ojeda et al. (2014) suggested that USP planets are the remnant cores of hot Jupiters that lost their gaseous envelopes due to photo-evaporation. However, Winn et al. (2017) found that the strong tendency for gas-giant planets to be found around metal-rich stars does not hold for USP planets, contrary to what one would expect if hot Jupiters are the progenitors of USP planets. This leaves open the possibility that hot Neptunes are the progenitors of USP planets, because the occurrence rate of planets smaller than  $4 R_{\oplus}$  does not appear to be strongly dependent on the host star metallicity (Buchhave et al. 2012; Buchhave & Latham 2015). Accurate determinations of masses and radii of USP planets – with uncertainties of 20% or smaller – along with spectral analyses of the host stars would enable searches for possible correlations between stellar composition and the properties of USP planets (e.g., Dumusque et al. 2014b; Gandolfi et al. 2017).

In this paper we present the discovery of K2-141 b (EPIC 246393474 b), an USP planet transiting a K7 V star. The use of state-of-the-art spectrographs and an optimal observing strategy allowed us to pin down the planetary mass with an uncertainty better than 10%. These results are part of the ongoing project carried out by the KESPRINT consortium to detect, confirm, and characterize transiting planets from the *K2* mission (e.g., Barragán et al. 2016, 2018; Dai et al. 2017;

\* Based on observations obtained with (a) the Nordic Optical Telescope (NOT), operated on the island of La Palma jointly by Denmark, Finland, Iceland, Norway, and Sweden, in the Spanish Observatorio del Roque de los Muchachos (ORM) of the Instituto de Astrofísica de Canarias (IAC); (b) the 3.6 m ESO telescope at La Silla Observatory under program ID 099.C-0491; (c) the *Kepler* space telescope in its extended mission *K2*.

\*\* Tables of the light curve data and the radial velocities are only available at the CDS via anonymous ftp to [cdsarc.u-strasbg.fr](http://cdsarc.u-strasbg.fr) (130.79.128.5) or via <http://cdsarc.u-strasbg.fr/viz-bin/qcat?J/A+A/612/A95>



**Fig. 1.** K2 light curve of K2-141. Stellar activity is seen as the quasi-periodic, long period modulation. Transits are visible as shallow dips. The 5.3-day-long data gap, during which the telescope entered safe mode, is clearly visible at approximately two-thirds of the way through the time series.

Fridlund et al. 2017; Johnson et al. 2016; Narita et al. 2017; Nespral et al. 2017; Sanchis-Ojeda et al. 2015; Smith et al. 2017).

**Table 1.** Main identifiers, coordinates, optical and infrared magnitudes, and proper motion of K2-141.

Parameter	Value	Source
<i>Main identifiers</i>		
EPIC	246393474	EPIC
TYC	5244-714-1	EPIC
UCAC	445-136683	EPIC
2MASS	23233996-0111215	EPIC
<i>Equatorial coordinates</i>		
$\alpha$ (J2000.0)	23 <sup>h</sup> 23 <sup>m</sup> 39.971 <sup>s</sup>	EPIC
$\delta$ (J2000.0)	-01° 11' 21.39''	EPIC
<i>Magnitude</i>		
$V_T$	11.532 ± 0.156	<i>Tycho</i>
$V_J$	11.389 ± 0.148	Calc.
$I_C$	9.967 ± 0.030	DENIS
$J$	9.086 ± 0.021	2MASS
$H$	8.524 ± 0.053	2MASS
$K_s$	8.401 ± 0.023	2MASS
$W1$	8.311 ± 0.024	WISE
$W2$	8.391 ± 0.020	WISE
$W3$	8.311 ± 0.023	WISE
$W4$	7.930 ± 0.223	WISE
<i>Proper motions and parallax</i>		
$\mu_\alpha \cos \delta$ (mas yr <sup>-1</sup> )	113.179 ± 2.043	<i>Gaia</i>
$\mu_\delta$ (mas yr <sup>-1</sup> )	24.272 ± 1.209	<i>Gaia</i>
Parallax (mas)	17.01 ± 0.81	<i>Gaia</i>

## 2. K2 photometry

K2's campaign 12 (C12) was carried out by the *Kepler* space telescope from December 15, 2016, to March 4, 2017, UTC. The spacecraft was pointed towards the coordinates  $\alpha_{J2000} = 23^h 26^m 38^s$ ,  $\delta_{J2000} = -05^\circ 06' 08''$ . The photometric data include 79 days of almost continuous observations with a gap of 5.3 days between February 01, 15:06 UTC and February 06, 20:47 UTC when the satellite entered a safe mode. The C12 target list included 29 221 targets monitored in long-cadence mode, and 141 in short-cadence mode<sup>1</sup>. We downloaded the calibrated target pixel files from the Mikulski Archive for Space Telescopes<sup>2</sup> and extracted the light curves using an approach similar to that described by Vanderburg & Johnson (2014). For each image, we laid down a 16''-wide circular aperture around the brightest pixel, and fitted a two-dimensional (2D) Gaussian function to the intensity distribution. We then fitted a piecewise linear function between the observed flux variation and the best-fitting central coordinates of the Gaussian function.

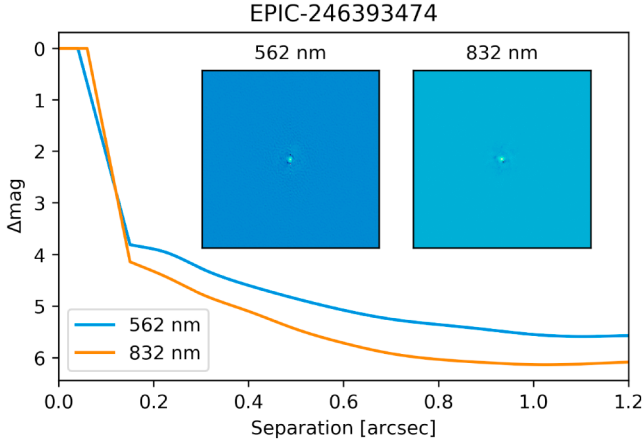
Before searching the light curves for transits, we attempted to remove long-term systematic or instrumental flux variations by normalizing the light curve using 1.5-day-long cubic splines. We searched for periodic transit signals using the Box-Least-Squares algorithm (BLS; Kovács et al. 2002) and employed a nonlinear frequency grid to account for the expected scaling of transit duration with orbital period. We also adopted Ofir (2014)'s definition of signal detection efficiency (SDE). We discovered that the light curve of EPIC 246393474 (hereafter K2-141) – whose equatorial coordinates, proper motion, parallax, and optical and near-infrared magnitudes are listed in Table 1 – shows periodic transit-like signal with a SDE of 23.5 and a depth of ~0.04% occurring every 0.28 days (6.7 h). We searched for additional transiting planets in the system by re-running the BLS algorithm after removing the data within 1.5 h of each transit of planet b. No transit signal was detected: the maximum SDE of the new BLS spectrum was 4.5. A visual inspection of the light curve did not reveal any additional transits, either. The target passed standard tests used to detect false positives due to eclipsing binaries: we did not detect any secondary eclipses or alternation of eclipse depths.

<sup>1</sup> See <http://keplerscience.arc.nasa.gov/k2-fields.html>

<sup>2</sup> <https://archive.stsci.edu/k2>

**Notes.** Values of fields marked with EPIC are taken from the Ecliptic Plane Input Catalog available at <http://archive.stsci.edu/k2/epic/search.php>. Values marked with *Tycho*, DENIS, 2MASS, WISE, and *Gaia* are from Høg et al. (2000), DENIS Consortium (2005), Cutri et al. (2003), Cutri et al. (2013), and Fabricius et al. (2016), respectively. The Johnson  $V$ -band magnitude ( $V_J$ ) has been calculated from the *Tycho*  $V_T$  and 2MASS  $H$  magnitudes using Eric Mamajek's transformation equation available at <https://doi.org/10.6084/m9.figshare.1291187.v1>

The K2 light curve of K2-141 shows quasi-periodic variations with a peak-to-peak amplitude of about ~1%, very likely the result of rotation and active regions on the host star (Fig. 1). This is further discussed in Sect. 5. Using the auto-correlation method applied to the out-of-transit K2 light curve (McQuillan et al. 2014), we measured a stellar rotation period of  $P_{\text{rot}} = 14.03 \pm 0.09$  days.



**Fig. 2.** “Blue” and “red” contrast curves and reconstructed images of K2-141 (*insets*). The two images are both centered around K2-141 and have a size of  $4.6'' \times 4.6''$ .

### 3. Ground-based follow-up observations

*Kepler*’s charge-coupled device (CCD) have a sky-projected pixel size of  $\sim 4''$ . Ground-based imaging with higher angular resolution is useful to check for an unresolved eclipsing binary that might be the source of the transit signal. Imaging is also useful to measure the fraction of light in the K2 photometric aperture that originates from the target star as opposed to other nearby stars. This is important for establishing the true fractional variation in the starlight during transits, and thereby the planet radius. Finally, high-precision RV measurements are needed to confirm the planetary nature of the transiting object and to measure its mass.

#### 3.1. Diffraction-limited imaging

On the night of August 9, 2017, UT, we conducted speckle imaging observations of the star K2-141 with the NASA Exoplanet Star and Speckle Imager (NESSI; Scott et al., in prep.), a new instrument for the WIYN 3.5 m telescope, which uses high-speed electron-multiplying CCDs (EMCCDs) to capture sequences of 40 ms exposures simultaneously in two bands. We also observed nearby point source calibrator stars close in time to the science target. We observed simultaneously in the “blue” band centered at 562 nm with a width of 44 nm and the “red” band centered at 832 nm with a width of 40 nm. The pixel scales of the “blue” and “red” EMCCDs are  $0.0175649$  and  $0.0181887'' \text{ pixel}^{-1}$ , respectively. The data reduction followed the same procedures described by Howell et al. (2011). Using the point source calibrator images, we computed reconstructed  $256 \times 256$  pixel images in each band, corresponding to  $4.6'' \times 4.6''$ . Figure 2 shows the contrast curves and reconstructed images for the “blue” and “red” pass bands. No secondary sources were detected in the reconstructed images. We measured the background sensitivity of the reconstructed images using a series of concentric annuli centered on the target star, resulting in  $5\sigma$  sensitivity limits (in delta-magnitudes) as a function of angular separation.

#### 3.2. Seeing-limited imaging

In order to search for sources outside of the  $4.6'' \times 4.6''$  field-of-view of our high-resolution NESSI images, but within the  $16''$ -wide circular aperture used to extract the light curve from the K2 pixel files, we also obtained seeing-limited multi-band

optical images using the MuSCAT (Narita et al. 2015) instrument on the 1.88 m telescope at the Okayama Astrophysical Observatory. The pixel scale of MuSCAT’s CCDs is  $0.36'' \text{ pixel}^{-1}$ . The instrument can observe in Sloan  $g'_2$ ,  $r'_2$ , and  $z_{s,2}$  bands simultaneously. The observations were performed on September 23, 2017 UT with seeing of  $\sim 1.5''$ . To keep the peak count level at about 45 000 ADU, we took ten exposures of 15, 4, and 12 s with the  $g'_2$ ,  $r'_2$ , and  $z_{s,2}$  bands, respectively. The frames were dark-subtracted and flat-fielded using standard routines. The five best on-focus frames were stacked together for each band.

We detected a companion located at  $12.6''$  towards the East of K2-141. MuSCAT’s images show that this target is about 7.8 mag fainter than K2-141 (from the weighted averaged of the  $g'_2$  and  $r'_2$  filters). This accounts for a contamination factor of  $1/1400$  of the target brightness. This value does not have a measurable impact on the derived parameters.

#### 3.3. High-precision Doppler observations

We started the RV follow-up of K2-141 with the Fibre-fed Échelle Spectrograph (FIES; Frandsen & Lindberg 1999; Telting et al. 2014) mounted at the 2.56 m Nordic Optical Telescope (NOT) of Roque de los Muchachos Observatory (La Palma, Spain). We obtained nine high-resolution ( $R \approx 67\,000$ ) spectra on five different nights, from August 15 to September 14, 2017, UTC, within observing programs 55-019, 55-202, and 55-206. Since the 6.7-h period is short enough to allow a significant fraction of the orbit to be sampled in one night, we obtained two spectra per night during three of the five FIES observing nights. Following (Gandolfi et al. 2015), we traced the RV drift of the instrument by bracketing the science exposures with 90-s ThAr spectra. We reduced the data using standard IRAF and IDL routines and extracted the RVs via multi-order cross-correlations using the stellar spectrum with the highest signal-to-noise ratio (S/N) as a template.

We also acquired 27 spectra with the HARPS spectrograph ( $R \approx 115\,000$ ; Mayor et al. 2003) mounted at the ESO-3.6 m telescope of La Silla observatory (Chile), as part of the observing program 099.C-0491. We adopted the same observing strategy as the FIES observations, acquiring between two and five spectra per night on seven different nights, from August 19 to 27, 2017, UTC. We reduced the data using the dedicated off-line HARPS pipeline and extracted the RVs via cross-correlation with a K5 numerical mask. The pipeline provides also the bisector span (BIS) and full-width at half maximum (FWHM) of the cross-correlation function, along with the Mt. Wilson activity index  $S$  of the Ca II H & K lines. Table 4 reports the FIES and HARPS RV measurements, as well as the exposure times and S/N per pixel at  $5500 \text{ \AA}$ .

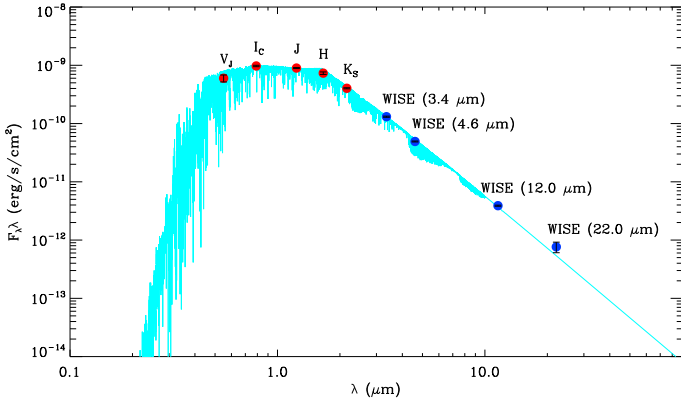
### 4. Stellar fundamental parameters

We derived the spectroscopic parameters of K2-141 from the co-added HARPS spectrum, which has a S/N per pixel of  $\sim 250$ . We used Spectroscopy Made Easy (SME; Valenti & Piskunov 1996; Valenti & Fischer 2005; Piskunov & Valenti 2017), a spectral analysis package that calculates synthetic spectra and fits them to high-resolution observed spectra using a  $\chi^2$  minimizing procedure. The analysis was performed with the non-LTE SME version 5.2.2, along with ATLAS 12 model atmospheres (Kurucz 2013). The microturbulent and macroturbulent velocities were assumed to be  $1 \text{ km s}^{-1}$  (Gray 2008). The wings of the  $H_\alpha$  and  $H_\beta$  lines were used to measure the effective temperature  $T_{\text{eff}}$ .



**Table 2.** Spectroscopic parameters of K2-141 as derived from the HARPS data using the two methods described in Sect. 4.

Method	$T_{\text{eff}}$ (K)	$\log g_{\star}$ (cgs)	[Fe/H] (dex)	$R_{\star}$ ( $R_{\odot}$ )	$v \sin i_{\star}$ (km s $^{-1}$ )
SME V5.2.2	$4403 \pm 100$	$4.50 \pm 0.15$	$-0.06 \pm 0.20$	.....	$3.0 \pm 1.7$
SpecMatch-emp	$4359 \pm 70$	.....	$+0.06 \pm 0.12$	$0.701 \pm 0.070$	....


**Fig. 3.** Spectral energy distribution of K2-141. The BT-Settl-CIFIST model spectrum with the same parameters as the star is plotted with a light blue line. The  $V_j$ ,  $I_c$ ,  $J$ ,  $H$ ,  $K_s$ , and  $W4$  fluxes are derived from the magnitudes reported in Table 1.

We excluded the core of the Balmer line because of their origin in higher layers of stellar photospheres. The surface gravity  $\log g_{\star}$  was determined from the wings of the Ca I  $\lambda$  6102,  $\lambda$  6122,  $\lambda$  6162 Å triplet, and the Ca I  $\lambda$  6439 Å line. We measured the iron abundance [Fe/H] and projected rotational velocity  $v \sin i_{\star}$  by simultaneously fitting many unblended iron lines in the spectral region 5880–6600 Å.

An independent analysis was carried out with SpecMatch-emp (Yee et al. 2017), a tool that uses hundreds of Keck/HIRES high-resolution template spectra of FGK stars for which the parameters have been accurately measured via interferometry, asteroseismology, spectral synthesis, and spectrophotometry. SpecMatch-emp finds the templates that best match an input observed spectrum in the spectral region 5000–5900 Å and derives the effective temperature  $T_{\text{eff}}$ , stellar radius  $R_{\star}$ , and iron abundance [Fe/H] by interpolation.

We summarize the results of the two spectral analyses in Table 2. The effective temperature and iron abundance estimates are consistent well within the nominal error bars. Since the two methods are based on different wavelength regions ( $\lambda > 5880$  Å for SME and  $\lambda < 5900$  Å for SpecMatch-emp) we treated the two sets of parameters as independent estimates. For  $T_{\text{eff}}$  and [Fe/H], we computed the weighted means of the values derived from the two methods. For the projected rotational velocity  $v \sin i_{\star}$  we adopted the value determined with SME. We report the adopted effective temperature  $T_{\text{eff}}$ , iron abundance [Fe/H], and projected velocity  $v \sin i_{\star}$  in Table 3. The stellar radius and surface gravity were re-determined using a different method, as described in the next paragraphs.

We derived the stellar radius  $R_{\star}$  and reddening  $A_v$  following the method described in Gandolfi et al. (2008). Briefly, we first built the spectral energy distribution (SED; Fig. 3) of K2-141 from the optical and infrared photometry listed in

Table 1. We then fitted the SED using the BT-Settl-CIFIST (Baraffe et al. 2015) model spectrum with the same spectroscopic parameters as the star. Adopting the extinction law of Cardelli et al. (1989) and assuming a total-to-selective extinction of  $R = A_v/E_{B-V} = 3.1$ , we found that the interstellar reddening is consistent with zero ( $A_v = 0.01 \pm 0.02$  mag). Using the distance of  $d = 58.77 \pm 0.81$  pc from the Gaia’s first data release (Table 1; Gaia Collaboration 2016), we determined a stellar radius of  $R_{\star} = 0.674 \pm 0.039 R_{\odot}$ , in agreement with the spectroscopic value derived using SpecMatch-emp (see Table 2).

An independent fit of the SED performed with the VOSA SED fitting tool (Bayo et al. 2008) yielded a stellar radius of  $R_{\star} = 0.671 \pm 0.042 R_{\odot}$ . We also verified our results combining the Gaia distance, effective temperature, and  $V_j$  magnitude (Table 1) with the bolometric correction calculated from the empirical equations by Torres (2010) and found a radius of  $R_{\star} = 0.666 \pm 0.065 R_{\odot}$ . Both values are in excellent agreement with our measurement, adding confidence to our results.

We finally converted  $T_{\text{eff}}$ ,  $R_{\star}$ , and [Fe/H] into stellar mass  $M_{\star}$  and surface gravity  $\log g_{\star}$  using the empirical relations derived by Torres et al. (2010) coupled to Monte Carlo simulations. K2-141 is a K7 V star (Pecaut & Mamajek 2013) with an effective temperature of  $T_{\text{eff}} = 4373 \pm 57$  K, a photospheric iron abundance of [Fe/H] =  $+0.03 \pm 0.10$  dex, a mass of  $M_{\star} = 0.662 \pm 0.022 M_{\odot}$ , and a radius of  $R_{\star} = 0.674 \pm 0.039 R_{\odot}$ , yielding a surface gravity of  $\log g_{\star} = 4.584 \pm 0.051$  (cgs). The final adopted values are given in Table 3. We note that also  $\log g_{\star}$  is consistent with our spectroscopic surface gravity (Table 2).

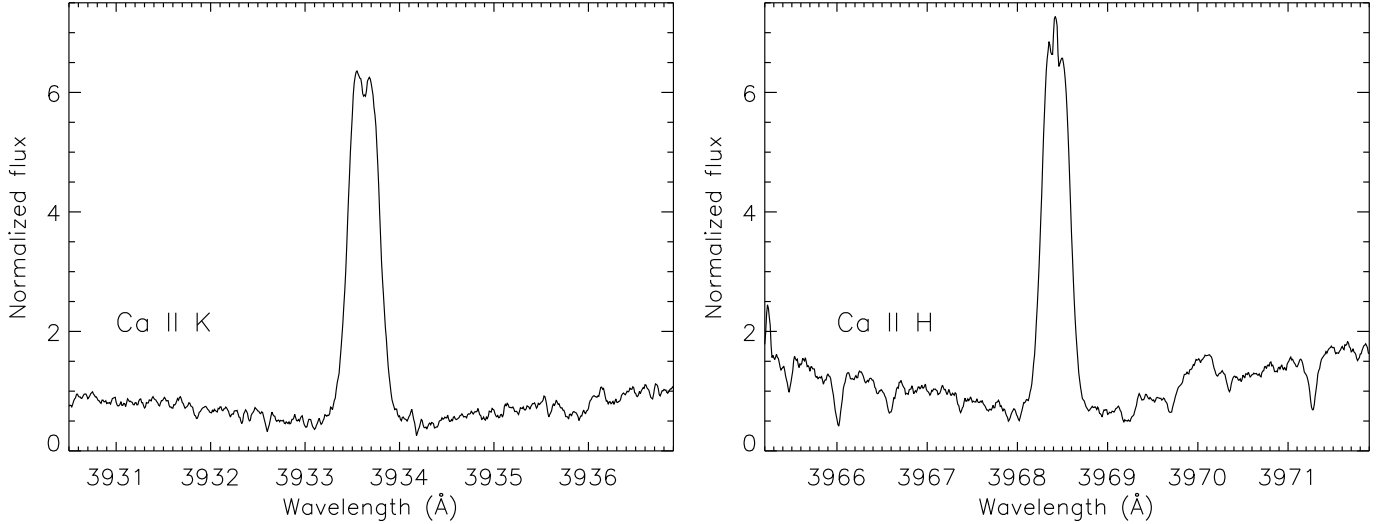
We used gyrochronology to estimate the age of K2-141 from the relations by Angus et al. (2015) and found  $740 \pm 360$  Myr, suggesting that the star might be relatively young (Table 3).

## 5. Stellar activity and frequency analysis of the HARPS data

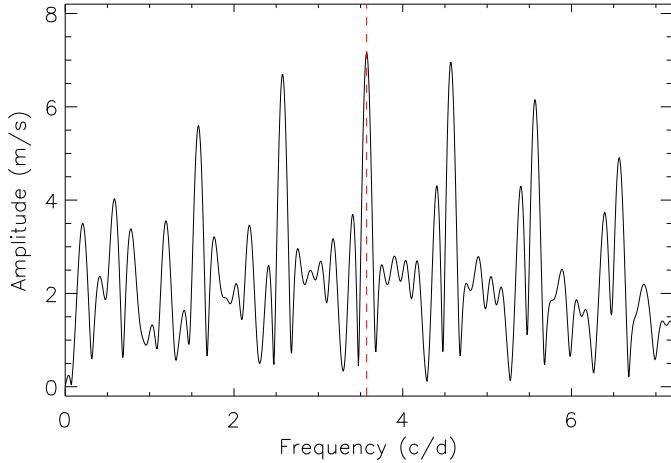
K2-141 is an active star. As presented in Sect. 2, the K2 light curve of K2-141 displays quasi-periodic modulation with a peak-to-peak amplitude of about 1% (Fig. 1). The photometric variability is very likely caused by active regions (spots, faculae, and plages) carried across the visible hemisphere of the stellar disk as the star spins about its axis. This is corroborated by the detection of strong emission components in the cores of the Ca II H & K lines (Fig. 4), from which we derived an average  $S$ -index of  $0.938 \pm 0.074$ , indicative of a high level of magnetic activity.

The magnetic activity of K2-141 is expected to produce quasi-periodic signals in time-series RV data, commonly referred to as “stellar jitter”. We used the code SOAP2 (Dumusque et al. 2014a) to estimate the RV variation induced by stellar activity. From the amplitude of the photometric variability, the spectroscopic parameters, and the rotation period of the star, we calculated an expected RV semi-amplitude variation of  $\sim 5$ – $10$  m s $^{-1}$ .





**Fig. 4.** Cores of the Ca II H & K lines of K2-141 as observed with HARPS.



**Fig. 5.** Discrete Fourier transform of the HARPS RV measurements. The dashed red line marks the frequency at the orbital period of K2-141 b.

We performed a frequency analysis of our RV measurements to look for the signature of the transiting planet and search for possible activity-induced signals. For this purpose, we did not include the FIES RVs because of the higher uncertainties, the relatively small number of data points, and the need to account for an offset between the FIES and HARPS data-sets.

Figure 5 shows the discrete Fourier transform (DFT) of the 27 HARPS RV measurements calculated using the code `Period04` (Lenz & Breger 2004). The peak with the largest semi-amplitude ( $\sim 7 \text{ m s}^{-1}$ ) is found to be at  $3.57 \text{ c/d}$ , that is, the orbital frequency of K2-141 b (0.28 day). We note that the semi-amplitude agrees with the value derived in Sect. 6. We also note the presence in the DFT of the 1-, 2-, 3-, and 4-day aliases to the left and right of the planetary signal, as expected given the 1-day sampling of our observations.

An additional trend is visible in the RV data after the signal of the transiting planet has been subtracted from the HARPS measurements, as depicted in the upper panel of Fig. 6. We found a Spearman’s rank correlation coefficient of  $-0.80$  with a  $p$ -value of  $1.4 \times 10^{-6}$ , strongly suggesting the existence of an

additional source of RV variation in our data<sup>3</sup>. To assess if the source of this additional signal is induced by stellar activity, we looked for possible correlations between the RV residuals and the activity indexes, namely, the Ca II H & K  $S$ -index, and the FWHM and bisector span (BIS) of the cross-correlation function (Fig. 6). Although the RV residuals and the BIS do not show a significant anti-correlation ( $-0.30$  with  $p = 0.13$ ), we found significant correlations between the RV residuals and the FWHM ( $0.73$  with  $p = 3.3 \times 10^{-5}$ ), and the RV residuals and the  $S$ -index ( $0.72$  with  $p = 4.8 \times 10^{-5}$ ). We concluded that the long-term trend observed in the HARPS data is likely caused by the presence of active regions on the photosphere of the star. We will present our approach to filtering out the stellar jitter in the following section.

## 6. Data analysis and results

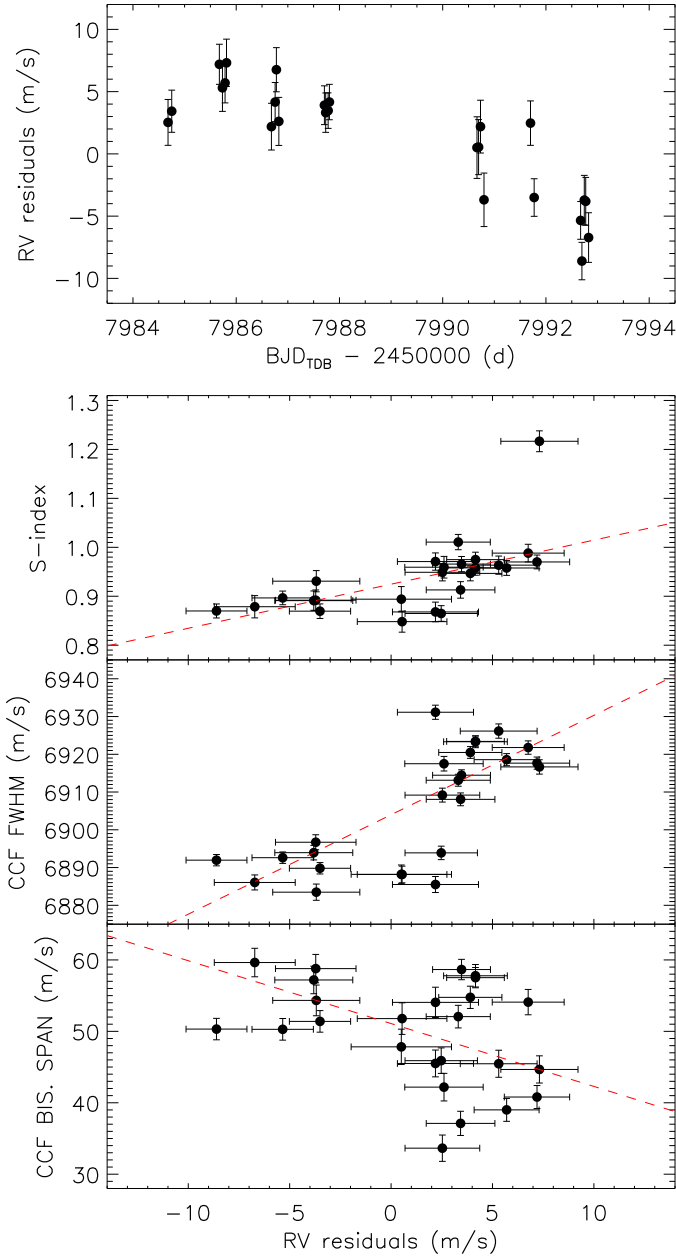
In order to arrive at a robust measurement of the planetary mass despite the additional RV variations induced by stellar activity (see Sect. 5), we used three different approaches to fit the data as described below.

### 6.1. Floating chunk offset method

The first method (hereafter M1) is based on the floating chunk offset (FCO) technique pioneered by Hatzes et al. (2011), which works well when the orbital period is much shorter than the timescales associated with the signals induced by stellar activity and any additional planets. The FCO method divides a given RV time-series into sub-segments of duration  $t$ , usually long enough to encompass the RV data collected within a given night. For each sub-segment, an offset is fitted to account for RV signals whose time-scales  $\gg t$ , assuming that the offset remains constant within one night. From this point of view, K2-141 b is an ideal target to apply the FCO method and remove long-term signals coming from outer companions and stellar activity (see, e.g., Hatzes et al. 2011; Gandolfi et al. 2017). Our observing strategy was tailored to use this technique by acquiring multiple spectra per night (Sect. 3.3).

We performed a Markov chain Monte Carlo (MCMC) joint analysis of the transit and RV data using the code `pyaneti`

<sup>3</sup> Following Fisher (1925), we adopted a significance level of  $p = 0.05$ .



**Fig. 6.** Upper panel: HARPS RV residuals following the subtraction of the transiting planet signal vs. time. Lower panels: Ca II H&K  $S$  activity index (top), cross-correlation FWHM (middle), and cross-correlation bisector span (bottom) vs. RV residuals. The dashed red lines mark the best fitting linear fit.

(Barragán et al. 2017). We fitted a Keplerian orbit to the RV data and used the limb-darkened quadratic model by Mandel & Agol (2002) for the transit light curves. We integrated the light curve model over ten steps to account for the *Kepler* long-cadence observation (Kipping 2010). Likelihood and fitted parameters are similar to those described in previous analysis performed with `pyaneti` (e.g., Barragán et al. 2016, 2018). We used flat uniform priors for all parameters. Details are given in Table 3. We explored the parameter space with 500 Markov chains to generate a posterior distribution of 250 000 independent points for each parameter. The inferred parameter value and its uncertainty is given by the median and 68.3% credible interval of the posterior distribution. We did not account for additional jitter terms because  $\chi^2/\text{d.o.f.} \approx 1$ .

When fitting for an eccentric orbit, the posterior distribution of the eccentricity has a median of 0.06 and a 99%-confidence upper limit of 0.20. The Bayesian Information Criterion (BIC) favors a circular orbit with a  $\Delta\text{BIC} = 8$ . Our result is consistent with a circular orbit, as expected for a planet with such a short period. All further analyses were carried out fixing the orbit to be circular.

We measured a Doppler semi-amplitude of  $6.74 \pm 0.56 \text{ m s}^{-1}$ , which corresponds to a mass of  $5.31 \pm 0.46 M_{\oplus}$ .

## 6.2. Sinusoidal activity signal modeling

In the second method (hereafter M2), the RV signal associated with stellar activity is modeled as a coherent sinusoidal signal (e.g., Pepe et al. 2013; Barragán et al. 2018). The *K2* light curve shows the presence of long-lived active regions whose evolution time scale is longer than the rotation period of the star. Since our RV follow-up lasted only  $\sim 30$  days, that is, two stellar rotation periods, we can reasonably assume that the activity-induced RV signal remained coherent within our observing window.

For this method we used `pyaneti` and performed an MCMC analysis similar to M1. To account for the activity-induced signal at the rotation period of the star, we included an additional sinusoidal signal whose period was constrained with a Gaussian prior centered at  $P_{\text{rot}} = 14.03 \text{ d}$  with a standard deviation of  $0.09 \text{ d}$  (see Sect. 2). For the phase and amplitude of the activity signal we adopted uniform priors.

We first performed a fit including only the planetary signal. This analysis produces a  $RV \chi^2/\text{d.o.f.} \approx 5$ . When including the extra sinusoidal signal, M2 gives an  $RV \chi^2/\text{d.o.f.} \approx 1.3$  and a  $\Delta\text{BIC} = 130$  over the previous model. This further proves that RV data cannot be explained by only the planetary signal (cf. Sect. 5). To account for imperfect treatment of the activity-induced variation, we added RV jitter terms to the equation of the likelihood for the FIES and HARPS RV data.

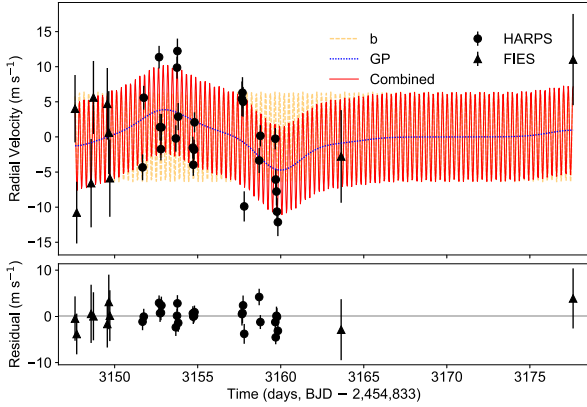
The final inferred Doppler amplitude induced by stellar activity is  $5.05^{+0.72}_{-0.66} \text{ m s}^{-1}$ , which agrees with the prediction made with SOAP2 (Sect. 5). The RV semi-amplitude variation induced by the planet is  $6.71 \pm 0.63 \text{ m s}^{-1}$ , which translates to a planetary mass of  $5.23 \pm 0.50 M_{\oplus}$ .

## 6.3. Gaussian Process

The third method (hereafter M3) models the correlated noise associated with stellar activity with a Gaussian Process (GP); GP describes stochastic processes with a parametric description of the covariance matrix. GP regression has proven to be successful in modeling the effect of stellar activity for several other exoplanetary systems (see, e.g., Haywood et al. 2014; Grunblatt et al. 2015; López-Morales et al. 2016).

We used the same GP model that was described in detail by Dai et al. (2017). The list of parameters includes the RV semi-amplitude  $K$ , the orbital period  $P_{\text{orb}}$  and the time of conjunction  $t_c$ . The model also includes the so-called hyperparameters of the quasi-periodic kernel: the covariance amplitude  $h$ , the correlation timescale  $\tau$ , the period of the covariance  $T$ , and  $\Gamma$  which specifies the relative contribution between the squared exponential and periodic part of the kernel.

We imposed Gaussian priors on  $P_{\text{orb}}$  and  $t_c$  using the well-constrained values from *K2* transit modeling. We imposed Jeffreys priors on the scale parameters:  $h$ ,  $K$ , and the jitter parameters. We imposed uniform priors on the systematic offsets  $\gamma_{\text{HARPS}}$  and  $\gamma_{\text{FIES}}$ . Most importantly, we imposed priors on the hyperparameters  $\tau$ ,  $\Gamma$  and  $T$  based on a GP regression of the observed *K2* light curve, as described below.



**Fig. 7.** Measured RV variation of K2-141 from HARPS (circles) and FIES (triangles). The red solid line is the best-fit model including the signal of planet b and the GP model of the correlated stellar noise. The yellow dashed line shows the signal of planet b. The blue dotted line shows the GP.

The presence of active regions on the host star coupled with stellar rotation produces quasi-periodic variations in both the measured RV and the flux variation. Given that the activity-induced RV variation and flux variation are generated by similar physical processes, they could be described by GPs with similar hyperparameters. Since the photometry has higher precision and better time sampling than the RV data, we used the *K2* light curves to constrain the GP that describes the observed quasi-periodic variation. We adopted the covariance matrix and the likelihood function described by Dai et al. (2017). However, since RV and photometric data have different physical dimensions, we replaced  $h$  and  $\sigma_{\text{jit}}$  with  $h_{\text{phot}}$  and  $\sigma_{\text{phot}}$ , that is, the amplitude of the quasi-periodic kernel and the white noise component. We imposed a Gaussian prior on  $T$  based on the stellar rotation period we measured with the auto-correlation function (Sect. 2). Again, Jeffreys priors were imposed on the scale parameters:  $h_{\text{phot}}$ ,  $\sigma_{\text{phot}}$ ,  $\tau$  and  $\Gamma$ . We imposed a uniform prior on  $f_0$ , which represents the out-of-transit flux.

We first found the maximum likelihood solution using the Nelder–Mead algorithm implemented in the Python package `scipy`. We then sampled the posterior distribution of the various model parameters with the affine-invariant MCMC implemented in the code `emcee` (Foreman-Mackey et al. 2013). We initialized 100 walkers in the vicinity of the maximum likelihood solution. We ran the walkers for 5000 links and removed the initial 1000 “burn-in” links. We calculated the Gelman–Rubin potential scale reduction factor, ensuring that it was smaller than 1.03 indicating adequate convergence. We used the median, 16% and 84% percentiles of the posterior distribution to summarize the results for the hyperparameters:  $\tau = 1.9^{+1.3}_{-0.4}$  days,  $\Gamma = 2.1^{+1.8}_{-1.0}$ . We used these results as Gaussian priors in the subsequent GP analysis of the RV data.

We analyzed the RV data with GP regression by first finding the maximum likelihood solution using the Nelder–Mead algorithm implemented in the Python package `scipy`. We sampled the parameter posterior distribution with MCMC using the same procedure as described above. The RV semi-amplitude for planet b was found to be  $6.48^{+0.73}_{-0.71}$  m s<sup>-1</sup>. This translates into a planetary mass of  $5.05^{+0.57}_{-0.55}$   $M_{\oplus}$ . Figure 7 shows the measured RV variation of K2-141 and the GP model. We found that the amplitude of the correlated noise is  $h_{\text{rv}} = 4.0^{+2.2}_{-1.2}$  m s<sup>-1</sup>, which agrees with the value inferred by M2.

## 7. Discussion

The three techniques used to determine the mass of K2-141 b give results that are consistent to within  $\sim 0.5\sigma$ . While we have no reason to prefer one method over the other, we adopted the results of M1 (FCO method), which gives a planetary mass of  $M_p = 5.31 \pm 0.46 M_{\oplus}$  ( $\sim 11\sigma$  significance). Figure 8 displays the *K2* and RV measurements along with the inferred transit and Keplerian models from the FCO method folded to the orbital period of the planet. The parameter estimates are given in Table 3.

The upper panel of Fig. 9 shows the mass–period diagram for all the USP planets with directly measured masses. We included 55 Cnc e, CoRoT-7 b, HD 3167 b, K2-106 b, Kepler-10 b, Kepler-78 b and EPIC 228732031 b using the planetary masses and radii reported in the TEPcat database<sup>4</sup>. With a period of 0.28 d (6.7 h), K2-141 b is the shortest-period planet with a measured mass among all planets known to date. As of October 2017, there are only three transiting exoplanets known to have orbital periods shorter than K2-141 b, namely, Kepler 70 b, KOI-1843 b, and EPIC 228813918 b. However, their masses have not yet been measured. The mass of Kepler 70 b ( $P = 0.24$  d; Charpinet et al. 2011) was estimated based on the radius and an assumed mean density. For KOI-1843 b ( $P = 0.18$  d), the mass was constrained based on the lower limit of the planet’s mean density calculated from the requirement that the planet must orbit outside the star’s Roche limit (Rappaport et al. 2013). For EPIC 228813918 b ( $P = 0.18$  d) Smith et al. (2018) reported a lower limit for the planetary mass based on Rappaport et al. (2013), as well as a  $3\sigma$  upper limit based on RV measurements.

The mass of  $M_p = 5.31 \pm 0.46 M_{\oplus}$  and radius of  $R_p = 1.54^{+0.10}_{-0.09} R_{\oplus}$  yield a mean density of  $\rho_p = 8.00^{+1.83}_{-1.45}$  g cm<sup>-3</sup>. The lower panel of Fig. 9 shows the mass–radius diagram for USP small transiting planets ( $P_{\text{orb}} < 1$  day,  $R_p < 2 R_{\oplus}$ ), along with Zeng et al. (2016)’s theoretical models for different compositions. (Dressing et al. 2015) suggested that planets with masses between 1 and 6  $M_{\oplus}$  are consistent with a composition of 17% Fe and 83% MgSiO<sub>3</sub> (rock). Their sample included three USP planets (Kepler-78 b, Kepler-10 b and CoRoT-7 b), two planets with periods 4.3 and 13.8 days, and the solar system planets Earth and Venus. Figure 9 shows a 20% Fe and 80% MgSiO<sub>3</sub> composition line, similar to the values found by Dressing et al. (2015). Given its mass and radius, K2-141 b lies close to the 40%Fe–60% MgSiO<sub>3</sub> compositional model. Within the  $1\sigma$  uncertainties, K2-141 b lies between the 20%Fe–80% MgSiO<sub>3</sub> and 60%Fe–40% MgSiO<sub>3</sub> models. If we consider only the five USP planets with  $M_p < 6 M_{\oplus}$ , we found that no single theoretical curve is consistent with them all. At face value this shows that there is some dispersion in the composition of USP planets.

We further inferred the composition of K2-141 b using a ternary plot (Fig. 10) for planetary compositions comprising different abundances of H<sub>2</sub>O, MgSiO<sub>3</sub> and Fe (Zeng & Sasselov 2013; Zeng et al. 2016). The dashed lines mark the allowed region for K2-141 b, given the  $1\sigma$  uncertainty on the planetary mass and radius. We first analyzed a water-free model (right-hand side of the triangle). If the planet does not contain H<sub>2</sub>O, K2-141 b has a composition comprising  $\sim 5$ –70% iron and  $\sim 30$ –95% rocks. If the planet does contain H<sub>2</sub>O, then the maximum water abundance ( $1\sigma$  upper limit) cannot exceed  $\sim 30\%$  of the total mass.

Using precise radii for 2024 *Kepler* planets with  $P_{\text{orb}} < 100$  d, Fulton et al. (2017) found a deficit of objects with  $1.5 \lesssim R_p \lesssim 2 R_{\oplus}$ .

<sup>4</sup> <http://www.astro.keele.ac.uk/jkt/tepcat/>



**Table 3.** Stellar and planetary parameters.

Parameter	Prior <sup>a</sup>	Final value
<i>Stellar parameters</i>		
Star mass $M_\star$ ( $M_\odot$ )	...	$0.662 \pm 0.022$
Star radius $R_\star$ ( $R_\odot$ )	...	$0.674 \pm 0.039$
Stellar density $\rho_\star$ ( $\text{g cm}^{-3}$ )	...	$3.05^{+0.61}_{-0.48}$
Stellar density $\rho_\star$ (from light curve, $\text{g cm}^{-3}$ )	...	$2.98^{+0.33}_{-0.67}$
Effective temperature $T_{\text{eff}}$ (K)	...	$4373 \pm 57$
Surface gravity $\log g_\star$ (cgs)	...	$4.584 \pm 0.051$
Iron abundance [Fe/H] (dex)	...	$0.03 \pm 0.10$
Projected rotational velocity $v \sin i_\star$ ( $\text{km s}^{-1}$ )	...	$3.0 \pm 1.7$
Rotational period $P_{\text{rot}}$ (day)	...	$14.03 \pm 0.09$
Gyrochronological age (Myr)	...	$740 \pm 360$
Interstellar extinction $A_V$ (mag)	...	$0.01 \pm 0.02$
Star distance $d$ (pc)	...	$58.77 \pm 2.81$
<i>Model parameters</i>		
Orbital period $P_{\text{orb}}$ (day)	$\mathcal{U}[0.2802, 0.2804]$	$0.2803226 \pm 0.0000013$
Transit epoch $T_0$ (BJD <sub>TDB</sub> - 2 450 000)	$\mathcal{U}[7738.45, 7738.47]$	$7738.46540^{+0.00023}_{-0.00021}$
Scaled semi-major axis $a/R_\star$	$\mathcal{U}[1.1, 20]$	$2.31^{+0.08}_{-0.19}$
Scaled planet radius $R_p/R_\star$	$\mathcal{U}[0.0, 0.1]$	$0.02088^{+0.00053}_{-0.00039}$
Impact parameter, $b$	$\mathcal{U}[-1, 1]$	$-0.01^{+0.38}_{-0.35}$
$\sqrt{e} \sin \omega_\star$	$\mathcal{F}[0]$	0
$\sqrt{e} \cos \omega_\star$	$\mathcal{F}[0]$	0
Parameterized limb-darkening coefficient $q_1$ <sup>b</sup>	$\mathcal{U}[0, 1]$	$0.54^{+0.29}_{-0.25}$
Parameterized limb-darkening coefficient $q_2$ <sup>b</sup>	$\mathcal{U}[0, 1]$	$0.29^{+0.32}_{-0.19}$
Doppler semi-amplitude variation $K$ ( $\text{m s}^{-1}$ )	$\mathcal{U}[0, 50]$	$6.74 \pm 0.56$
<i>Derived parameters</i>		
Planet mass $M_p$ ( $M_\oplus$ )	...	$5.31 \pm 0.46$
Planet radius $R_p$ ( $R_\oplus$ )	...	$1.54^{+0.10}_{-0.09}$
Planet density $\rho_p$ ( $\text{g cm}^{-3}$ )	...	$8.00^{+1.83}_{-1.45}$
Semi-major axis of the planetary orbit $a$ (AU)	...	$0.00716^{+0.00055}_{-0.00065}$
Eccentricity <sup>c</sup> $e$	...	0
Orbit inclination along the line-of-sight $i_p$ ( $^\circ$ )	...	$90 \pm 10$
Transit duration $\tau_{14}$ (h)	...	$0.94 \pm 0.02$
Equilibrium temperature <sup>d</sup> $T_{\text{eq}}$ (K)	...	$2039^{+87}_{-48}$
Linear limb-darkening coefficient $u_1$	...	$0.43^{+0.27}_{-0.26}$
Quadratic limb-darkening coefficient $u_2$	...	$0.31^{+0.36}_{-0.43}$

**Notes.** <sup>(a)</sup>  $\mathcal{U}[a, b]$  refers to uniform priors between  $a$  and  $b$ ,  $\mathcal{F}[a]$  to a fixed  $a$  value. <sup>(b)</sup>  $q_1$  and  $q_2$  as defined by [Kipping \(2013\)](#). <sup>(c)</sup> Fixed (see Sect. 6.1). <sup>(d)</sup> Assuming albedo = 0.

This gap divides close-in small planets into two distinct classes: one population comprises planets with  $R_p \lesssim 1.5 R_\oplus$ , the other sub-Neptunes with  $2 \lesssim R_p \lesssim 3.0 R_\oplus$ . Theoretical models suggest that the observed gap might be due to photo-evaporation (e.g., [Lopez & Fortney 2014](#); [Owen & Wu 2013](#)). According to these models, close-in ( $a \lesssim 0.1$  AU) planets in the sub-Neptunes regime would lose their atmosphere within a few hundred Myr due to the intense level of photo-ionizing radiation from their host stars, forming bare rocky cores. K2-141 b receives a stellar radiation of about  $2900 F_\oplus$  (where  $F_\oplus$  refers to insolation received on Earth), which is more than four times the threshold of  $650 F_\oplus$  needed for planets to undergo photo-evaporation of H/He envelopes ([Lundkvist et al. 2016](#)). This implies that if K2-141 b had an atmosphere, it was lost due to the vicinity to its host star.

[Rappaport et al. \(2013\)](#) pointed out that for planets with orbital periods  $\lesssim 6$  h, the mere requirement that the planet is

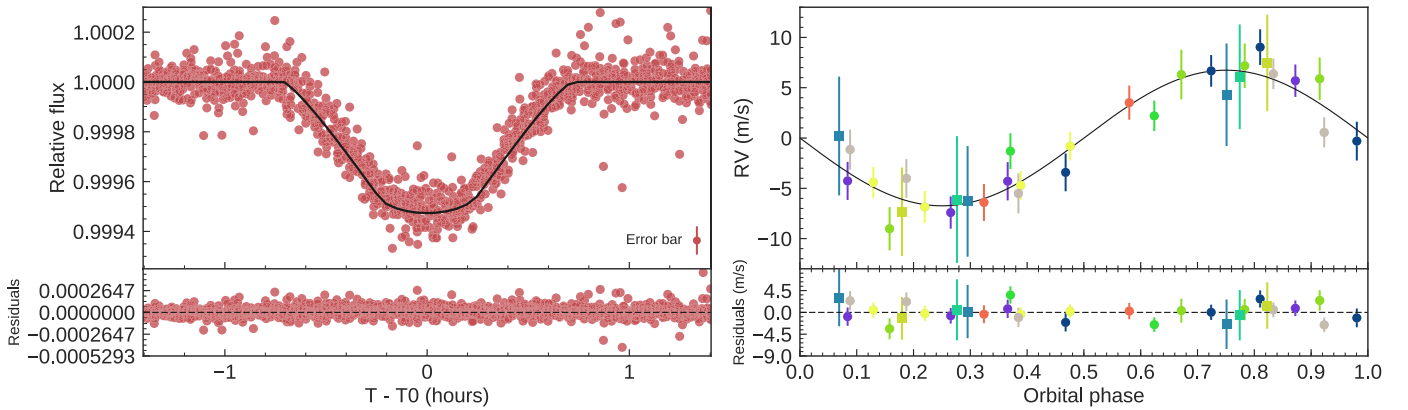
outside the Roche limit leads to an astrophysically relevant lower limit on the planet's mean density. Assuming a constant density, a planet with a period of 6.7 h would need a minimum density of  $\sim 3.5 \text{ g cm}^{-3}$  to avoid tidal destruction by the star. This value is smaller than K2-141 b's density lower limit of  $5.2 \text{ g cm}^{-3}$ . In this case the RV data are more powerful than the Roche-limit consideration, for determining the planet's composition.

## 8. Conclusions

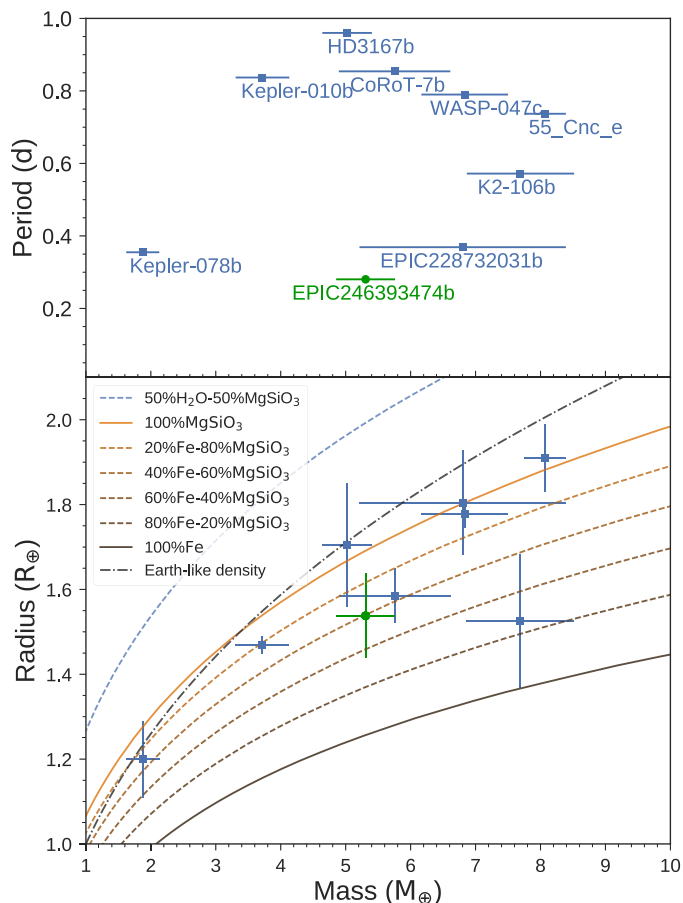
We present the discovery and characterization of K2-141 b, an USP planet transiting an active K7 V star in K2 campaign 12. The relatively low stellar mass ( $M_\star = 0.662 \pm 0.022 M_\odot$ ) and the ultra short orbital period ( $P_{\text{orb}} = 6.7$  h), along with our multi-visit observing strategy, allowed us to detect the Doppler

**Table 4.** FIES and HARPS measurements of K2-141.

BJD <sub>TDB</sub> −2 450 000	<i>RV</i> (km s <sup>−1</sup> )	$\sigma_{RV}$ (km s <sup>−1</sup> )	BIS (km s <sup>−1</sup> )	<i>FWHM</i> (km s <sup>−1</sup> )	<i>S</i> -index	$\sigma_{S\text{-index}}$	<i>T</i> <sub>exp</sub> (s)	S/N at 5500 Å
<b>FIES</b>								
7980.614462	0.0000	0.0048	...	...	...	...	2700	44.1
7980.714496	−0.0148	0.0044	...	...	...	...	2700	43.2
7981.582595	−0.0106	0.0063	...	...	...	...	2700	38.4
7981.722148	0.0016	0.0052	...	...	...	...	2700	41.0
7982.556610	0.0007	0.0051	...	...	...	...	2700	40.9
7982.645724	−0.0034	0.0059	...	...	...	...	2700	40.0
7982.709129	−0.0099	0.0055	...	...	...	...	2700	44.0
7996.636413	−0.0068	0.0066	...	...	...	...	2700	38.1
8010.600636	0.0070	0.0065	...	...	...	...	2700	38.2
<b>HARPS</b>								
7984.679455	−3.3841	0.0018	0.0336	6.9092	0.949	0.018	2100	53.1
7984.751182	−3.3742	0.0017	0.0371	6.9081	0.913	0.017	2100	57.3
7985.674124	−3.3684	0.0016	0.0408	6.9177	0.970	0.014	3600	59.5
7985.733443	−3.3784	0.0019	0.0455	6.9261	0.964	0.019	2100	52.1
7985.784325	−3.3815	0.0016	0.0390	6.9186	0.958	0.015	2700	60.5
7985.812451	−3.3784	0.0019	0.0447	6.9167	1.217	0.021	2400	52.6
7986.682021	−3.3800	0.0019	0.0455	6.9311	0.971	0.018	2100	52.5
7986.753853	−3.3699	0.0016	0.0578	6.9233	0.958	0.015	2100	61.7
7986.778032	−3.3675	0.0018	0.0541	6.9218	0.988	0.018	2100	55.6
7986.825742	−3.3769	0.0019	0.0422	6.9175	0.959	0.022	2100	52.1
7987.708413	−3.3813	0.0016	0.0548	6.9205	0.947	0.015	2100	62.4
7987.733807	−3.3837	0.0016	0.0521	6.9131	1.011	0.016	2100	61.4
7987.781124	−3.3816	0.0014	0.0587	6.9145	0.966	0.016	2100	67.8
7987.805535	−3.3777	0.0014	0.0575	6.9234	0.975	0.015	2100	68.4
7990.663651	−3.3743	0.0025	0.0478	6.8882	0.894	0.026	2400	41.3
7990.694913	−3.3735	0.0022	0.0518	6.8882	0.848	0.022	3000	45.1
7990.731940	−3.3748	0.0021	0.0541	6.8855	0.868	0.020	3000	46.6
7990.799975	−3.3897	0.0021	0.0543	6.8835	0.931	0.022	2400	46.2
7991.700580	−3.3831	0.0018	0.0459	6.8939	0.865	0.016	3600	53.7
7991.771590	−3.3796	0.0015	0.0514	6.8898	0.870	0.015	3000	63.6
7992.671326	−3.3800	0.0015	0.0503	6.8926	0.897	0.014	2100	63.0
7992.696419	−3.3858	0.0015	0.0503	6.8920	0.870	0.014	2100	63.9
7992.742740	−3.3875	0.0020	0.0588	6.8967	0.892	0.021	2100	50.0
7992.770507	−3.3904	0.0019	0.0572	6.8939	0.891	0.020	2400	51.5
7992.825821	−3.3919	0.0020	0.0596	6.8861	0.879	0.023	2100	50.4



**Fig. 8.** *Left panel:* transit light curve folded to the orbital period of K2-141 b and residuals. The red points mark the K2 data, whereas the thick black line the re-binned best-fitting transit model. *Right panel:* phase-folded RV curve of K2-141 folded to the orbital period of the planet, as obtained using the FCO method. The best fitting circular solution is marked with a solid black line. HARPS and FIES data are shown with filled circles and squares, respectively. Different colors refer to different nights. *Lower panels:* the residuals to the best fitting model.

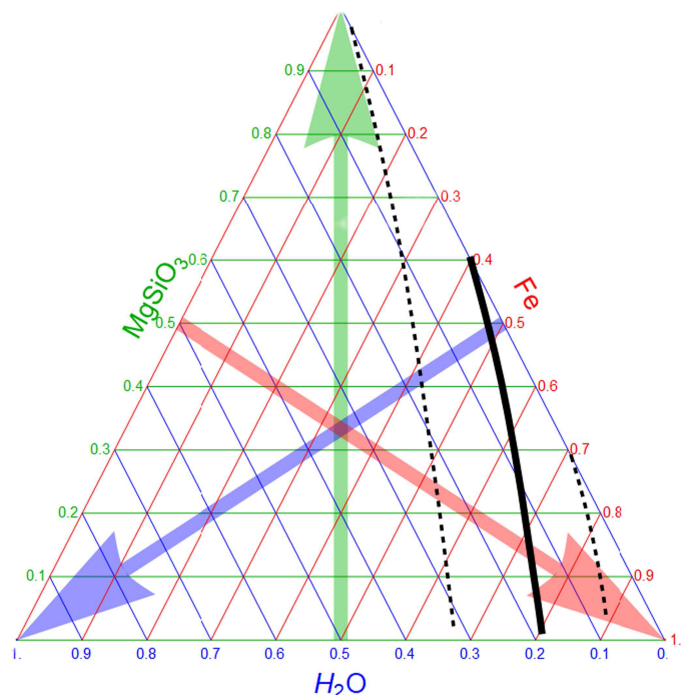


**Fig. 9.** Mass-period (*upper panel*) and mass-radius (*lower panel*) diagram for USP planets ( $P_{\text{orb}} < 1$  day,  $R_p < 2 R_{\oplus}$ ) with measured masses. The solid green circle marks the position of K2-141 b. USP planets in the literature are marked with blue squares. The composition models from Zeng et al. (2016) are displayed with different lines and colors. The Earth-like density curve is also shown with a dot-dashed black line.

reflex motion of the star with a significance of about  $11\sigma$ . With a mass of  $M_p = 5.31 \pm 0.46 M_{\oplus}$ , K2-141 b is the planet with the shortest orbital period and a measured mass known to date.

The planetary density is consistent with a composition made of a mixture of iron and rocks. We estimated that the iron content of K2-141 b cannot exceed  $\sim 70\%$  of the total planetary mass.

*Acknowledgements.* We are very grateful to the NOT and ESO staff members for their unique and superb support during the observations. Data presented herein were obtained at the WIYN Observatory from telescope time allocated to NN-EXPLORE through the scientific partnership of the National Aeronautics and Space Administration, the National Science Foundation, and the National Optical Astronomy Observatory, obtained as part of an approved NOAO observing program (P. I. Livingston, proposal ID 2017B-0334). NESSI was built at the Ames Research Center by Steve B. Howell, Nic Scott, Elliott P. Horch, and Emmett Quigley. D.G. gratefully acknowledges the financial support of the Programma Giovani Ricercatori – Rita Levi Montalcini – Rientro dei Cervelli (2012) awarded by the Italian Ministry of Education, Universities and Research (MIUR). This work is partly financed by the Spanish Ministry of Economics and Competitiveness through projects ESP2014-57495-C2-1-R and ESP2016-80435-C2-2-R. M.F. and C.M.P. acknowledge generous support from the Swedish National Space Board. Sz.Cs. thanks the Hungarian OTKA Grant K113117. This paper includes data collected by the *Kepler* mission. Funding for the *Kepler* mission is provided by the NASA Science Mission directorate. This work has made use of data from the European Space Agency (ESA) mission *Gaia* (<https://www.cosmos.esa.int/gaia>), processed by the *Gaia* Data Processing and Analysis Consortium (DPAC; <https://www.cosmos.esa.int/web/gaia/dpac/consortium>). Funding for the DPAC has been provided by national institutions, in particular the institutions participating in the *Gaia* Multilateral Agreement. This publication makes use of VOSA, developed under the Spanish Virtual Observatory project supported from the Spanish MICINN through grant AyA2011-24052.



**Fig. 10.** Ternary plot for different planetary compositions. We show different combinations of water, rock and iron for possible solid planet compositions. The solid and dashed black lines mark the possible position of K2-141 b and the 68% credible intervals. This plot was created using the applet available at <https://www.cfa.harvard.edu/~lzeng/manipulateplanet.html>.

Note added in proof. K2-141b has also been independently discovered, confirmed, and characterized by Malavolta et al. (2018). Their results are in very good agreement with those presented here.

## References

- Angus, R., Aigrain, S., Foreman-Mackey, D., & McQuillan, A. 2015, *MNRAS*, **450**, 1877
- Baraffe, I., Homeier, D., Allard, F., & Chabrier, G. 2015, *A&A*, **577**, A42
- Barragán, O., Grziwa, S., Gandolfi, D., et al. 2016, *AJ*, **152**, 193
- Barragán, O., Gandolfi, D., & Antoniciello, G. 2017, *Astrophysics Source Code Library* [record [asc1:1707.003](https://ui.adsabs.org/abs/2017ASCl..1707..003B)]
- Barragán, O., Gandolfi, D., Smith, A. M. S., et al. 2018, *MNRAS*, **475**, 1765
- Bayo, A., Rodrigo, C., Barrado y Navascués, D., et al. 2008, *A&A*, **492**, 277
- Buchhave, L. A., & Latham, D. W. 2015, *ApJ*, **808**, 187
- Buchhave, L. A., Latham, D. W., Johansen, A., et al. 2012, *Nature*, **486**, 375
- Cardelli, J. A., Clayton, G. C., & Mathis, J. S. 1989, *ApJ*, **345**, 245
- Charpinet, S., Fontaine, G., Brassard, P., et al. 2011, *Nature*, **480**, 496
- Cutri, R. M., Skrutskie, M. F., van Dyk, S., et al. 2003, *2MASS All Sky Catalog of Point Sources*
- Cutri, R. M., Wright, E. L., Conrow, T. et al. 2013, *VizieR Online Data Catalog: II/328*
- Dai, F., Winn, J. N., Gandolfi, D., et al. 2017, *AJ*, **154**, 226
- DENIS Consortium. 2005, *VizieR Online Data Catalog: II/263*
- Dressing, C. D., Charbonneau, D., Dumusque, X., et al. 2015, *ApJ*, **800**, 135
- Dumusque, X., Boisse, I., & Santos, N. C. 2014a, *ApJ*, **796**, 132
- Dumusque, X., Bonomo, A. S., Haywood, R. D., et al. 2014b, *ApJ*, **789**, 154
- Fabrizius, C., Bastian, U., Portell, J., et al. 2016, *A&A*, **595**, A3
- Fisher, R. 1925, *Statistical Methods for Research Workers* (Edinburgh Oliver & Boyd)



- Foreman-Mackey, D., Hogg, D. W., Lang, D., & Goodman, J. 2013, *PASP*, **125**, 306
- Frandsen, S., & Lindberg, B. 1999, in *Astrophysics with the NOT*, ed. H. Karttunen, & V. Piirola (Piikkio: Univ. Turku), 71
- Fridlund, M., Gaidos, E., Barragán, O., et al. 2017, *A&A*, **604**, A16
- Fulton, B. J., Petigura, E. A., Howard, A. W., et al. 2017, *AJ*, **154**, 109
- Gaia Collaboration (Brown, A. G. A., et al.) 2016, *A&A*, **595**, A2
- Gandolfi, D., Alcalá, J. M., Leccia, S., et al. 2008, *ApJ*, **687**, 1303
- Gandolfi, D., Parviainen, H., Deeg, H. J., et al. 2015, *A&A*, **576**, A11
- Gandolfi, D., Barragán, O., Hatzes, A. P., et al. 2017, *AJ*, **154**, 123
- Gray, D. F. 2008, *The Observation and Analysis of Stellar Photospheres* (Cambridge, UK: Cambridge University Press)
- Grünblatt, S. K., Howard, A. W., & Haywood, R. D. 2015, *ApJ*, **808**, 127
- Guenther, E. W., Barragan, O., Dai, F., et al. 2017, *A&A*, **608**, A93
- Hatzes, A. P., Fridlund, M., Nachmani, G., et al. 2011, *ApJ*, **743**, 75
- Haywood, R. D., Collier Cameron, A., Queloz, D., et al. 2014, *MNRAS*, **443**, 2517
- Høg, E., Fabricius, C., Makarov, V. V., et al. 2000, *A&A*, **355**, L27
- Howell, S. B., Everett, M. E., Sherry, W., Horch, E., & Ciardi, D. R. 2011, *AJ*, **142**, 19
- Johnson, M. C., Gandolfi, D., Fridlund, M., et al. 2016, *AJ*, **151**, 171
- Kipping, D. M. 2010, *MNRAS*, **408**, 1758
- Kipping, D. M. 2013, *MNRAS*, **435**, 2152
- Kovács, G., Zucker, S., & Mazeh, T. 2002, *A&A*, **391**, 369
- Kurucz, R. L. 2013, Astrophysics Source Code Library [record [ascl:1303.024](#)]
- Lenz, P., & Breger, M. 2004, in *The A-Star Puzzle*, eds. J. Zverko, J. Ziznovsky, S. J. Adelman, & W. W. Weiss, IAU Symposium, 224, 786
- Lopez, E. D., & Fortney, J. J. 2014, *ApJ*, **792**, 1
- López-Morales, M., Haywood, R. D., Coughlin, J. L., et al. 2016, *AJ*, **152**, 204
- Lundkvist, M. S., Kjeldsen, H., Albrecht, S., et al. 2016, *Nat. Commun.*, **7**, 11201
- Malavolta, L., Mayo, A. W., Loudon, T., et al. 2018, *AJ*, **155**, 107
- Mandel, K., & Agol, E. 2002, *ApJ*, **580**, L171
- Mayor, M., Pepe, F., Queloz, D., et al. 2003, *The Messenger*, **114**, 20
- McQuillan, A., Mazeh, T., & Aigrain, S. 2014, *ApJS*, **211**, 24
- Narita, N., Fukui, A., Kusakabe, N., et al. 2015, *J. Astron. Telesc. Instrum. Syst.*, **1**, 045001
- Narita, N., Hirano, T., Fukui, A., et al. 2017, *PASJ*, **69**, 29
- Nespral, D., Gandolfi, D., Deeg, H. J., et al. 2017, *A&A*, **601**, A128
- Ofir, A. 2014, *A&A*, **561**, A138
- Owen, J. E., & Wu, Y. 2013, *ApJ*, **775**, 105
- Pecaut, M. J., & Mamajek, E. E. 2013, *ApJS*, **208**, 9
- Pepe, F., Cameron, A. C., Latham, D. W., et al. 2013, *Nature*, **503**, 377
- Piskunov, N., & Valenti, J. A. 2017, *A&A*, **597**, A16
- Rappaport, S., Sanchis-Ojeda, R., Rogers, L. A., Levine, A., & Winn, J. N. 2013, *ApJ*, **773**, L15
- Sanchis-Ojeda, R., Rappaport, S., Winn, J. N., et al. 2014, *ApJ*, **787**, 47
- Sanchis-Ojeda, R., Rappaport, S., Pallè, E., et al. 2015, *ApJ*, **812**, 112
- Smith, A. M. S., Gandolfi, D., Barragán, O., et al. 2017, *MNRAS*, **464**, 2708
- Smith, A. M. S., Cabrera, J., Csizmadia, S., et al. 2018, *MNRAS*, **474**, 5523
- Telting, J. H., Avila, G., Buchhave, L., et al. 2014, *Astron. Nachr.*, **335**, 41
- Torres, G. 2010, *AJ*, **140**, 1158
- Torres, G., Andersen, J., & Giménez, A. 2010, *A&ARv*, **18**, 67
- Valenti, J. A., & Fischer, D. A. 2005, *ApJS*, **159**, 141
- Valenti, J. A., & Piskunov, N. 1996, *A&AS*, **118**, 595
- Van Eylen, V., Agentoft, C., Lundkvist, M. S., et al. 2017, *MNRAS*, submitted, [[arXiv:1710.05398](#)]
- Vanderburg, A., & Johnson, J. A. 2014, *PASP*, **126**, 948
- Winn, J. N., Sanchis-Ojeda, R., Rogers, L., et al. 2017, *AJ*, **154**, 60
- Yee, S. W., Petigura, E. A., & von Braun, K. 2017, *ApJ*, **836**, 77
- Zeng, L., & Sasselov, D. 2013, *PASP*, **125**, 227
- Zeng, L., Sasselov, D. D., & Jacobsen, S. B. 2016, *ApJ*, **819**, 127

<sup>1</sup> Dipartimento di Fisica, Università degli Studi di Torino, via Pietro Giuria 1, 10125 Torino, Italy

e-mail: [oscar.barraganvil@edu.unito.it](mailto:oscar.barraganvil@edu.unito.it)

<sup>2</sup> Department of Physics and Kavli Institute for Astrophysics and Space Research, Massachusetts Institute of Technology, Cambridge, MA 02139, USA

<sup>3</sup> Department of Astrophysical Sciences, Princeton University, 4 Ivy Lane, Princeton, NJ 08544, USA

<sup>4</sup> Department of Astronomy, Graduate School of Science, The University of Tokyo, Hongo 7-3-1, Bunkyo-ku, Tokyo 113-0033, Japan

<sup>5</sup> Department of Space, Earth and Environment, Chalmers University of Technology, Onsala Space Observatory, 439 92 Onsala, Sweden

<sup>6</sup> Department of Earth and Planetary Sciences, Tokyo Institute of Technology, 2-12-1 Ookayama, Meguro-ku, Tokyo 152-8551, Japan

<sup>7</sup> Astrobiology Center, NINS, 2-21-1 Osawa, Mitaka, Tokyo 181-8588, Japan

<sup>8</sup> National Astronomical Observatory of Japan, NINS, 2-21-1 Osawa, Mitaka, Tokyo 181-8588, Japan

<sup>9</sup> Institute of Planetary Research, German Aerospace Center, Rutherfordstrasse 2, 12489 Berlin, Germany

<sup>10</sup> Departamento de Astrofísica, Universidad de La Laguna, 38206 Tenerife, Spain

<sup>11</sup> Instituto de Astrofísica de Canarias, C/ Vía Láctea s/n, 38205 La Laguna, Tenerife, Spain

<sup>12</sup> Stellar Astrophysics Centre, Department of Physics and Astronomy, Aarhus University, Ny Munkegade 120, 8000 Aarhus C, Denmark

<sup>13</sup> Department of Astronomy and McDonald Observatory, University of Texas at Austin, 2515 Speedway, Stop C1400, Austin, TX 78712, USA

<sup>14</sup> Leiden Observatory, University of Leiden, PO Box 9513, 2300 RA Leiden, The Netherlands

<sup>15</sup> Okayama Astrophysical Observatory, National Astronomical Observatory of Japan, Asakuchi, Okayama 719-0232, Japan

<sup>16</sup> Rheinisches Institut für Umweltforschung, Abteilung Planetenforschung an der Universität zu Köln, Aachener Strasse 209, 50931 Köln, Germany

<sup>17</sup> Thüringer Landessternwarte Tautenburg, Sternwarte 5, 07778 Tautenburg, Germany

<sup>18</sup> Department of Astronomy, The Ohio State University, 140 West 18th Ave., Columbus, OH 43210, USA

<sup>19</sup> Center for Astronomy and Astrophysics, TU Berlin, Hardenbergstr. 36, 10623 Berlin, Germany