



Universiteit  
Leiden  
The Netherlands

## **Metabolomic characterization of plant exudates and their correlation with plant defense systems**

Salome Abarca, L.F.

### **Citation**

Salome Abarca, L. F. (2020, June 18). *Metabolomic characterization of plant exudates and their correlation with plant defense systems*. Retrieved from <https://hdl.handle.net/1887/119363>

Version: Publisher's Version

License: [Licence agreement concerning inclusion of doctoral thesis in the Institutional Repository of the University of Leiden](#)

Downloaded from: <https://hdl.handle.net/1887/119363>

**Note:** To cite this publication please use the final published version (if applicable).

Cover Page



Universiteit Leiden



The handle <http://hdl.handle.net/1887/119363> holds various files of this Leiden University dissertation.

**Author:** Salome Abarca, L.F.

**Title:** Metabolomic characterization of plant exudates and their correlation with plant defense systems

**Issue Date:** 2020-06-18

## Chapter 2

### **Plant latex, from ecological interests to bioactive chemical resources**

Luis Francisco Salomé-Abarca <sup>a</sup>, Peter G. L. Klinkhamer <sup>b</sup>, Young Hae Choi <sup>a\*</sup>

<sup>a</sup> *Natural Products Laboratory, Institute of Biology, Leiden University, Sylviusweg 72, 2333 BE Leiden, The Netherlands.*

<sup>b</sup> *Plant Ecology and Phytochemistry, Institute of Biology, Leiden University, Sylviusweg 72, 2333 BE Leiden, The Netherlands.*

\* Corresponding author.

E-mail: [y.choi@chem.leidenuniv.nl](mailto:y.choi@chem.leidenuniv.nl)

## Chapter 2

### ABSTRACT

Historically, latex-bearing plants have been regarded as important medicinal resources in many countries due to their characteristic latex ingredients. They have also often been endowed with a social or cultural significance in religious or cult rituals or for hunting. Initial chemical studies focused on the protein or peptide content but recently the interest extended to smaller molecules. Latex has been found to contain a broad range of specialized metabolites such as terpenoids, cardenolides, alkaloids, and phenolics, which are partly responsible for their antibacterial, antifungal, anthelmintic, cytotoxic, and insect-repellent activities. The diversity in biology and chemistry of latexes is supposedly associated to their ecological roles in interactions with exogenous factors. Latexes contain unique compounds that are different to those found in their bearing plants. Exploring the feasibility of plant latex as a new type of bioactive chemical resource, this review paper covers the chemical characterization of plant latexes, extending this to various other plant exudates. Also, the factors influencing this chemical differentiation and the production, transportation, and chemistry of the latex exudates are described, based on ecological and biochemical mechanisms. We also proposed a latex coagulation model involving 4 general conserved steps. Therefore, the inherent defensive origin of latexes is recognized as their most valuable character and encourages one to pay attention to these materials as alternative sources to discover metabolites with insecticidal or antimicrobial activity.

**Keywords:** plant exudates; latex coagulation; mechanical defense; bioactive latex metabolites; endophytes; interaction.

## **1. Introduction**

Latex is a milky fluid consisting of tiny droplets of organic matter dispersed in an aqueous medium (a sort of natural colloidal suspension). Based on their physicochemical characteristics there are many subtypes of latexes, but the most well-known ones are rubbery latexes, of which polymeric microparticles can reach over 50% of the latex weight. If boiled, latexes can often coagulate, forming a solid mass. The main constituents of the coagulum are *cis* or *trans*-polyisoprenes and resinous materials (Coppen., 1995; Dell and McComb, 1977). Additionally, they also contain diverse primary and specialized metabolites as well as considerable levels of polypeptides and proteins. Compared with other types of plant exudates, latexes have a high degree of chemical diversity, not merely at the level of analogues of individual compounds but as a broad range of chemical classes. These chemical characteristics distinguish latex from other plant exudates. In plants, latex is reported to be ubiquitous in more than 20 000 species from over 40 families of angiosperms, which represents between 8 and 10% of all of the terrestrial angiosperms (Agrawal et al., 2008; Agrawal and Konno, 2009; Konno, 2011; Huber et al., 2015). Among these, most studied plants belong to the Asclepiadaceae, Sapotaceae, Anacardiaceae, Apocynaceae, and Euphorbiaceae families (Coppen., 1995; Ramos et al., 2010). The biological roles of latex are associated with many exogenous factors. Because of their chemical selection and mutual interaction of components related to their dedicated biological functions, plant latexes have been considered the first line of defense against many herbivores and pathogens (Konno, 2011, Langenheim, 2003; Termentzi et al., 2011). It is possible even that microorganisms living inside a host plant, so-called endophytes, could be involved in the production and biotransformation of a broad range of host plant-originated metabolites related to defensive strategies (Yang et al., 2005). Therefore, the complex factors involved in the production of latex metabolites, together with plant biosynthesis, result in the chemical discrimination of the latex metabolome from that of other parts of the plant, showing a great potential as a new bioactive chemical resource. Looking into the feasibility of plant latex as a new type of resource of active chemicals,

## Chapter 2

this review paper deals with the chemical characterization of plant exudates in the first part and then later focuses on plant latexes and how their chemical composition generally differs from their bearing plants. Moreover, to investigate the factors influencing this chemical differentiation, the production, transportation, and chemistry of the exudation of latex are described from an ecological and biochemical mechanism perspective. Lastly, an insight for the use of latexes as a bioinspirational model are discussed, which could partly explain metabolite selection, their complementation as bioactive mixtures in plants, and their potential application in medical and crop sciences.

### 2. Characterization of Plant Latex and Other Exudates

In addition to latex, plants produce several types of exudates such as gums, mucilage, essential oil, oleoresins, resins, and phloem-like saps (Coppen, 1995). The differentiation of exudates is mainly associated with species specificity, anatomical origin, morphological appearance, or their chemical composition. Nonetheless, plant exudates are generally classified based on their chemical composition (Fig. 1).

Gums are defined as solids usually produced from stem barks or roots. They flow out naturally upon mechanical damage or at an infection point, readily solidifying on contact with air (Dell and McComb, 1977). The main constituents of gums are polysaccharides, which are polymers of arabinose, galactose, mannose, and glucuronic acid (Coppen, 1995). They are thus hydrophilic, being either water-soluble or capable of absorbing water and swelling up to form a gel, but they are insoluble in oils or organic solvents.

Mucilages are water-soluble acidic or neutral polysaccharides that yield mixtures of simple sugars (e.g., galactose, arabinose, xylose, rhamnose, and galacturonic acid) or uronic acid (Dell and McComb, 1977; Choudhary, 2014; Hirst and Jones, 1958) by hydrolysis. The localization of mucilages is very specific, being produced intracellularly and having some of their constituents related to cell wall components (Sun et al., 2012). Differently to gums, mucilages are strongly related to seed survival and also act as water storage in plants (Sun et al., 2012).

Oleoresins are referred to as resins or, more specifically, soft resins. They are exudates with a high content of volatile compounds. The physical state of a resin varies from solid to semi-solid, being composed of lipophilic terpenes such as mono-, sesqui-, and diterpenes. While most plants can produce resins, only a few families such as Fabaceae, Burseraceae, and Pinaceae are known for their high resin production (Coppen, 1995).

Essential oils are mainly composed of organic volatile compounds, which confer their characteristic properties such as odor and density and low melting points (Dhifi et al., 2016). Unlike other types of plant exudates, their vapor pressure under atmospheric conditions is so high that they diffuse through the air (Vainstein et al., 2001; Pophof et al., 2005). These volatile compounds belong to various chemical classes such as alcohols, ethers or oxides, aldehydes, ketones, esters, amines, amides, phenols, heterocycles, and mainly monoterpenes (Vainstein et al., 2001).

Extra fascicular phloem is a particular type of sap localized in a special network of sieve tubes outside of the vascular bundles. It is found in a very limited number of families such as Curcubitaceae (Zhang et al., 2010; Gaupels and Ghirardo, 2013). They contain abundant amino acids and a wide range of low levels of small molecules together with some proteins (Turgeon and Oparka, 2010). The biological functions of the phloem are likely associated with their proteins such as instant wound signaling and plugging of the sieve elements to avoid the loss of nutrients. They have additionally been found to play a direct role as anti-insect agents against generalist insect-herbivores (Kehr, 2006).

The definition of latex has varied throughout time according to the review paper by Hunter (1994) (Hunter 1994). Polhamus (1962) stated that “no one has demonstrated why a plant makes rubber and it does not appear to be a food reserve. Strong evidence indicates that rubber is an end-product that is not reused in the metabolism of the plant”. Five years later Metcalfe (1967) stated, “The term latex is used loosely by plant anatomists for fluids with a milky appearance due to the suspension of many small particles in a liquid dispersion medium with a very different refractive index”. Further, he added, “According to Esau (1965) the dispersed particles are commonly hydrocarbons of the terpene type which include essential oils, balsams, and

## Chapter 2

rubber.” Moreover, “The fact that latex is restricted to a small number of plant families which have little taxonomic relationship suggests that the capacity to produce latex has been evolved more than once”. Even after all these concepts and hypothesis, Webster and Bauk will (1989) concluded that “as none of the above hypotheses has been proven, the function of latex and rubber in the plant remains unknown”.

Nowadays, there are more definitions of latex, based on their anatomical origin, storage, or ecological roles. Particularly, the ecological approach explains possible functions of latex in plants. For example, Konno, (2011) stated that “plant latex is a sap, typically a white sap, that is stored in the tissue called a laticifer and that is exuded from a point of damage in plant tissues immediately after insect herbivory”. Currently, latex can be defined in a general manner, as an exudate that is kept in extremely elongated cells extended along the plant. Such canal structures are called laticifers. Anatomically, latexes are originated from vacuoles because a large part of the laticifer cells are occupied by vacuoles (Cai et al., 2009).

A number of phytochemical studies investigating latex biochemistry have been published, covering complex aqueous mixtures of rubber to specialized metabolites such as alkaloids, cardenolides, phenolics, starch, furanocoumarins, sugars, and non-protein amino acids (Agrawal and Konno, 2009; Pandey, 2001; Taira et al., 2005). However, most previous works focused on polymeric ingredients while specialized metabolites were usually neither properly identified nor quantified. If any, research was done on a limited number of species (e.g., on the latex of *Taraxacum officinale* L., Asteraceae) (Huber et al., 2015).

Currently, there is no scientific evidence of the metabolic role of latex in plants. Instead, a large amount of evidence has been accumulated proposing latex as a natural defense barrier against herbivores. In the strict sense, a plant defense is any feature that improves the fitness of plants under herbivory pressure (Karban and Baldwin, 1997). In the case of latex, it is used by plants as a complementary chemical and mechanical defensive system (Bauer et al., 2013). However, only a few studies have linked the variation of latex in planta to plant fitness (Agrawal, 2005).



### MUCILAGE

Polyamines, carbohydrates, glucuronic acid

**Structure of production:**

Leaves' buds and idioblast



### PHLOEM LIKE SAP

Proteins

**Structure of production:**

Phloem tubes



### LATEX

Rubber, terpenoids, alkaloids, cardenolides

**Structure of production:**

Laticifers



### RESIN

Volatile terpene, diterpene acids, phenolics

**Structure of production:**

Resiniferous ducts and blisters



### ESSENTIAL OIL

Monoterpenes, sesquiterpenes, diterpenes

**Structure of production:**

Glandular trichomes

**Fig. 1.** Plant exudates' classification, their main chemical components and their producing structures. Pictures were taken by one of the authors, Luis Francisco Salomé Abarca.

## Chapter 2

### 3. Composition of latexes

Laticifers are specialized latex-producing cells with a characteristic anatomy and distinct cytoplasm (Hagel et al., 2008). The cytoplasm of the cells is a colloidal suspension of small particles in an aqueous sap of unspecified composition, but normally with different refractive index from its particles (Fahn 1993; Mahlberg 1993). They contain latexes that are generally milky or white but may sometimes be colored (yellow, orange, red, brown) or even colorless (Pickard 2008).

The mature laticifer has not yet been reported to contain chloroplasts (Sacchetti et al., 1999) so it is believed to have no functional plasmodesmatal connections with its neighboring tissues. Thus, laticifer cells are expected to obtain their energy from the apoplast. Hence, its electrophysiological behavior might display an electrogenic sequelae of active transport. Specifically, the loading of laticifers is thought to be related to the symplastic transport of photoassimilates and other minerals, from the phloem to the contiguous associated parenchyma. This process is followed by their entrance to the apoplast, and further transport into the laticifer by an  $H^+$ /sugar symport system (Pickard 2008; Bouteau et al., 1999) to be transformed into latex.

#### 3.1 Lutoids and Frey-Wyssling complexes

The ultracentrifugation of latex at 59 000 g yielded 3 major fractions (Cook and Sekhar, 1955). The bottom layer consisted in a solid pellet corresponding to around 20% of the latex volume, a rubber-clear aqueous supernatant (C-serum) mid-layer, and an upper layer consisting of rubber particles that floated to the top (Cook and Sekhar, 1955). The bottom fraction was characterized by the presence of a special type of plastids, called lutoids (d'Azuac et al., 1982). Electron microscopy shows them as spherical particles ranging in size from 0.5 to 3.0  $\mu m$ . Lutoids are highly osmosensitive (Héban, 1981). Lutoids accumulate chemicals from the cytoplasmic environment. Some of these, specifically pyrophosphate (Pi), citrate, and  $Mg^{2+}$  are about 10 times more concentrated than in the cytoplasm. They also contain many amino acids, acid hydrolases, peroxidases, lysozyme, and  $\alpha$ -mannosidase

(Pujarnisclé, 1968). Lutoidic membranes were reported to have a low or undetectable content of phosphatidic acid and no nitrogen phospholipids (Dupont et al., 1976), while both types of compounds were detected in the membrane of rubber particles. It was hypothesized that the large quantity of negative charges carried by the phosphatidic acid favors the colloidal stability of the main chemical components present in latex (Pujarnisclé, 1968; Dupont et al., 1976).

Similar sensitive particles to lutoids can be found as a thin vivid yellow layer conformed of specialized plastids. These layers are formed by double membrane vesicles that contain carotenes and polyphenol oxidases (PPOs) (Frey-Wyssling, 1929). These modified plastids, so-called Frey-Wyssling complexes, contribute to the coagulation of latex under open-air conditions because of their *o*-diphenoloxidase content (Héban, 1981). This activity is related to the oxidation of *o*-diphenols to *o*-quinones (Sánchez-Ferrer et al., 1995). These transformed metabolites can react with a big variety of substances in the cytosol such as proteins or oligosaccharides to form brown polymers. These phenomena are well documented in *T. officinale* L. (Asteraceae) latex (Wahler et al., 2009).

### **3.2 Rubber**

Rubber is a biopolymer with exceptional properties such as high elasticity, resilience, and efficient heat dispersion (Van Beilen and Poirier, 2007). This polymer is synthesized from *cis*-isopentenyl diphosphate units, poly-*cis*-1,4-isoprene (Fig. 2A) (Nor and Ebdon, 1998; Wititsuwannakul et al., 2003; Bushman et al., 2006). These polymers in rubbery latexes are present in the form of globules surrounded by a phospholipoprotean membrane (Héban, 1981). According to Agrawal and Konno, (2009), the stickiness of latex is attributed mainly to factors related to rubber: (a) elasticity of *cis*-polyisoprene, (b) coagulation of rubber particles, and (c) adhesiveness of rubber particles to the surfaces of insects. Therefore, the primary role of rubber in latex that is generally accepted is to confer self-stickiness (Agrawal and Konno, 2009). In addition to the stickiness, the white color of latexes is also due to the rubber particles (Mooibroek and Cornish, 2000).

## Chapter 2

### 3.3 Proteins and enzymes

A variety of proteins and enzymes have been isolated and identified from plant latexes. Of the numerous identified proteins, cysteine proteases, serine proteases, chitinases, lectins, protease inhibitors, and oxidases are the most reported in literature (Pintus et al., 2010). These proteins play many physiological roles such as signal transduction and oxidative defense (Usha-Rani and Jyothisna, 2010; Gulsen et al., 2010). Due to the variety of proteins, latexes were assumed to be a promising reservoir of defense proteins (Konno, 2011), providing a strong evidence of their defensive role against the plant's natural enemies. Intriguingly, some of the proteins were found to possess not only direct toxicity for the enemies but were also capable of triggering a mechanical defense against herbivores (e.g., coagulation process to form an initial barrier) (Gidrol et al., 1994; Wititsuwannakul et al., 2008; Wang et al., 2016).

In the latex of *Chelidonium majus* L. (Papaveraceae) cysteines (thiol protease inhibitors) were determined to be involved in stress adaptation mechanisms and defense plant responses. Moreover, these enzymes could also confer antimicrobial and antiviral properties to this latex (Zielińska et al., 2018). Moreover, in some plant species, the functions of these proteins were related to specialized metabolites such as alkaloids (Decker et al., 2000).

Besides, the construction of a comprehensive dataset containing 1208 non-redundant latex proteins from diverse latex producing species and its in silico predictions showed latex proteins to be related to a broad range of internal molecular processes and also to external environmental changes. Further, the function similarity between latex and phloem proteins suggested a functional conservation in plant vascular proteins (Cho et al., 2014). Also, latex proteins have been reviewed and linked to a new type of constitutive immediate response against viral agents (Nawrot, 2017).

Lectins are natural specific carbohydrate-binding proteins and similarly to these exert a protective function against a wide range of pests (Gulsen et al., 2010; Van den borre et al., 2011), including homopteran, lepidopteran, and coleopteran insects (Chakraborti et al., 2009; Saha et al., 2006; Macedo et al.,

2007). A review of literature on this activity reveals different possible mechanisms, one of the most important being their stability in the digestive system of herbivores (Van den borre et al., 2011). They also displayed a significant inhibitory activity of protein synthesis as exemplified with an in vitro test with 2 lectins isolated from the latex of *Hura crepitans* L. (Euphorbiaceae) (Barbieri et al., 1983).

Another report showed them to be effective against sucking insects because of their specific residues that show mannose-binding to cell walls (Chakraborti et al., 2009). They are also able to act indirectly against herbivores by enhancing latex coagulation (Wang et al., 2016) unlike other types of proteins that can only act as a direct chemical defense. Another relevant type of latex proteins are protein inhibitors since they can confer anti-nutritive properties to the latex (e.g., protease inhibition to prevent protein digestion) (Ryan, 1990). Trypsin and serine protease inhibitors were found to be highly induced in the latex of *Ficus carica* L. (Moraceae) (Kim et al., 2003) and *Carica papaya* L. (Caricaceae) upon herbivore and pathogenic microbes' attacks (Azarkan et al., 2004). This type of molecule can counteract degradative enzymes produced by some microorganisms during pathogenic interactions or by other specialized insects. The complexity of the enzymatic biochemical system in the latex of Euphorbia species has been discussed previously by Pintus et al., 2010.

### **3.4 Specialized metabolites in latex**

In general, plants have 2 types of defense systems, primary and secondary. Primary defenses are the first line of defense against herbivore attacks and involve morphologically protective structures on the surface, such as hairs, trichomes, thorns, spines, or even thicker leaves. Secondary defenses are considered to be mediated by plant chemicals, especially by specialized metabolites (e.g., phenolics, terpenoids, and alkaloids). The metabolites induced during plant defense can directly kill or retard the development of the herbivores and phytopathogenic microorganisms (Kant et al., 2015). The main defensive role of plant exudates is very likely as a barrier: acting firstly mechanically rather than chemically because of their inherent stickiness or

## Chapter 2

sliminess. These exudates are able to tangle some herbivores by reducing their movements or disabling their mouthparts and sense organs (Dussourd, 1995). They can also seal wounds, preventing the entrance of possible pathogens (Pasteels and Gregoire, 1983). On the other hand, a specific type of exudates such as latex, phloem like sap, and resins can exert a secondary type of chemical defense due to their wide range of specialized metabolites as well as functional proteins that are frequently in much higher concentrations than in other organs or tissues of the plant, such as leaves, stems, or roots (Agrawal and Konno, 2009). It has been found that many of these compounds provide strong resistance to herbivores via toxicity or anti-feeding effects (Konno, 2011).

In many latexes, the local concentrations of defensive substances increase at the point of damage to levels estimated to be between 20 and 2000 times those in leaves (Seiber et al., 1982; Konno et al., 2004; Konno et al., 2006). In this sense, latex is similar to an inducible defense system despite being pre-formed in the plant. However, there is a great advantage in latex borne defense, since the local increase of the level of specialized metabolites occurs within a few seconds after herbivory, which is much faster than inducible defense systems (Konno, 2011). The advantage of the latex response is even greater considering the mobility that allows for the immediate transport of defense substances to the precise point of damage by herbivores or pathogenic infections (Konno, 2011). It is thus a perfect example of the complementation of primary and secondary defenses.

Plant latexes have been found to display a broad chemical diversity that, as mentioned before, is distinctive from other organs or exudates of the plant. Their chemical uniqueness is not limited to a specific group of metabolites but includes a wide range of specialized metabolites such as terpenes, phenolics, alkaloids, and cardenolides (Agrawal and Konno, 2009; Pandey, 2001; Taira, 2005). Furthermore, some multitask and biologically active proteins including cysteine and serine proteases, and several other enzymes have been also found in these exudates (Pintus et al., 2010).

### 3.5 Terpenoids and steroids

One of the most abundant metabolites in latexes is a polymeric terpenoid derived from isoprene units (C<sub>5</sub>). The most important C<sub>5</sub> compound in latex is rubber (cis-1,4-polyisoprene) (Fig. 2A). This compound is found in many plant species (i.e., 300 genera and 8 plant families) (Kehr, 2006; Mooibroek and Cornish, 2000; Pintus et al., 2010).

Apart from rubber, smaller terpenoids have also been found in latex. The latex of *Lactuca sativa* L., Asteraceae, contains several sesquiterpene lactones. In particular, the concentration of lactucopicrin oxalate (Fig. 2B) in latex was found to be 1000 times higher than in leaves. Together with these sesquiterpene lactones, lettuceenin A was reported to be induced in latex by fungal or bacterial challenge (Sessa et al., 2000). The involvement of the induced compounds in plant defenses was partially supported by some antifungal activity against *Cladosporium herbarum* (Agrawal and Konno, 2009; Noack et al., 1980). Some Euphorbiaceae latexes (e.g., *Euphorbia biglandulosa* Desf., Euphorbiaceae) contain diterpenes, phorbols, and their derivatives in higher concentrations than in other organs (Noack et al., 1980). These compounds exhibit a high toxicity against many insects and mammals (Gershenzon and Croteau, 1991). Further, phytol (Fig. 2C), which is found in chlorophyll as a side chain, is supposed to help some compounds to adhere to cell membranes (Mazid et al., 2011). Steroids, particularly phytoecdysones (Fig. 2D) have some defensive roles against insects, disrupting molting and other developmental and physiological processes with lethal consequences (Heftmann, 2008).

*Euphorbia* is a genus that is well-known to contain triterpenoids as the major components of their latexes (Mazoir et al., 2008). For example, the latexes of *Euphorbia officinarum* L. (Euphorbiaceae) and *Euphorbia peplus* L. (Euphorbiaceae) were found to have several steroids and triterpenes including obtusifoliol, cycloartenol and 24-methylenecycloartenol, lupeol, lupeol acetate, lanosterol, and 24-methylenelanosterol, among others (Giner et al., 2000). The biological roles of the steroids and the triterpenoids are still unclear, although they are always present in high levels in rubbery latexes. As an assumed role, these compounds could form part of the laticifer or the

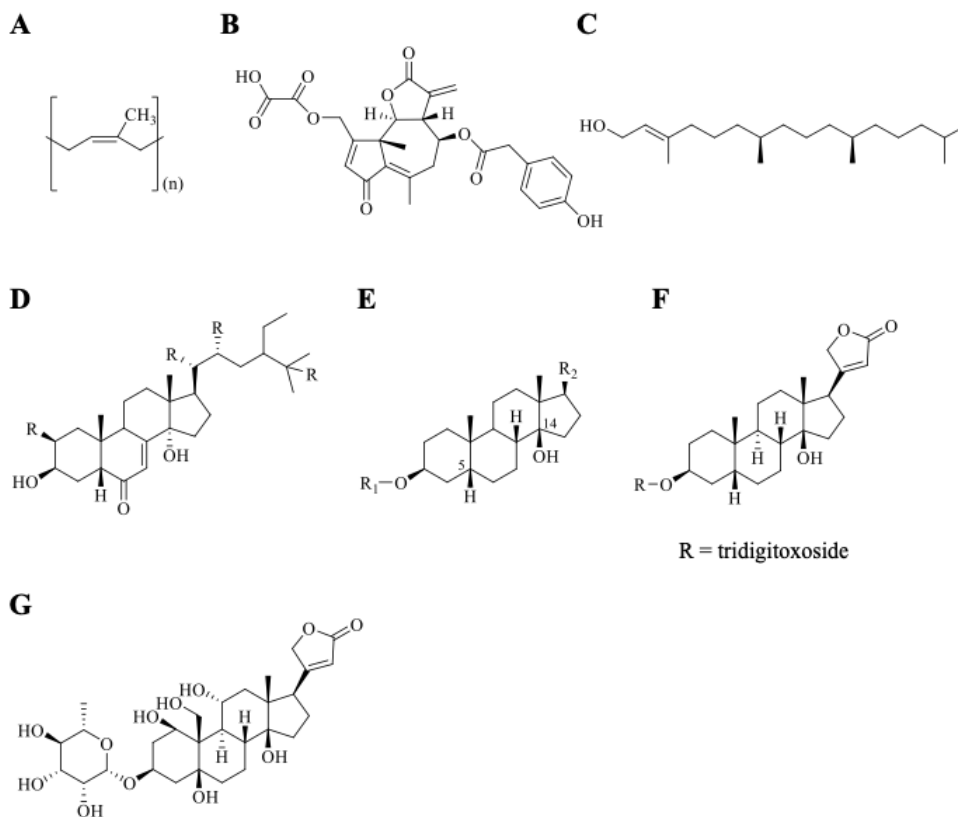
## Chapter 2

lutoidic membrane or even could be freely suspended in the C-serum. This could imply that the latex steroids and terpenoids might attach to the cell membranes of herbivores or pathogens, consequently facilitating the transportation of non-lipophilic molecules through cell membranes of insects or microorganisms. They could be intercalated in the cell membranes, forming channels that allow the entrance of small toxic hydrophilic molecules such as phenolics or others (Hjgigh-Valitova et al., 2016).

Another specific type of steroids, cardenolides, a type of cardiac glycoside that has a 5- or 6-membered lactone ring in  $\beta$  position at C17, are also well-known metabolites in latexes. The cardenolides are able to inhibit  $\text{Na}^+/\text{K}^+$ -ATPases, which are essential for maintaining the electric potential in most animal cells (Konno, 2011; Malcolm, 1991). Cardiac glycosides have 3 characteristic molecular features: sugar, steroid, and lactone moieties. Lactone rings and sugar moieties are not likely to be essential parts for their biological activity (Glynn, 1957; Repke, 1985). However, these lactone and sugar moieties could also be involved in the interaction with the  $\text{Na}^+/\text{K}^+$ -ATPase inhibition process (Paula et al., 2005). Studies on structure-activity relationships of cardenolide toxicity in animals revealed their steroid nucleus  $5\beta,14\beta$ -androstane- $3\beta,14$ -diol (Fig. 2E) as the structure required for receptor recognition (Paula et al., 2005). Further, the differences in the hydrophilicity of cardenolides is associated with the degree of absorption by animal tissues, which consequently resulted in potential toxicity. Usually, lipophilic cardenolides like digitoxin (Fig. 2F) are rapidly and almost completely absorbed but polar ones such as ouabain (Fig. 2G) are slowly absorbed in the intestine (Glynn, 1957). In the case of herbivory, cardenolides can also avert insect egg-laying and herbivory and disrupt their development, especially for generalist insects (Paul et al., 2011; Huang et al., 1993; Huang and Renwick, 1994; Renwick, 1996; Akhtar et al., 2003; Fukuyama et al., 1993).

The latexes of many Apocynaceae plants, another main latexbearing family, contain high levels of cardenolides (up to 30% considering the latex dried mass) (Seiber et al., 1982; Malcolm, 1991). For example, the latex of *Antiaris toxicaria* Lesch. (Moraceae) in tropical Southeast Asia have cardenolides (toxicariosides). Interestingly the cardenolides in the latex are very different from those of the leaves (Carter et al., 1997; Dai et al., 2009).

Although the unique pattern of cardenolides in the latex might result from the specific selection for defense compounds to be located in latex as a defensive trait, more studies are required to prove these roles.



**Fig. 2.** Chemical structures of typical terpenoids and steroids found in latexes. A: *cis*-1,4-polyisoprene, B: lactucopicrin oxalate, C: phytol, D: phytoecdysones, E: cardenolides ( $5\beta,14\beta$ -androstane $3\beta,14$ -diols), F: digitoxin, and G: ouabain.

### 3.6 Phenolics

Many types of phenolics, usually synthesized in the shikimate pathway, are ubiquitous in plants (e.g., tannins, lignans, coumarins, anthraquinones, phenylpropanoids, and flavonoids). It is thus expected that these diverse phenolics are involved in many biological and physiological processes of

## Chapter 2

plants in general (Appel, 1993). While the ecological significance of phenolics is undoubted, their presence in latexes has not been studied extensively. One study reported the presence of gallic acid, naphthoic acid, quercetin, chlorogenic acid, and rutin in the latex of *Hevea brasiliensis* (Willd. ex A. Juss.) Müll. Arg. (Euphorbiaceae) (Ismun et al., 2018) while higher levels of hexadecyl, octadecyl, and eicosyl esters of *p*-coumaric acids (Fig. 3 A) were found in the latex of sweet potato, *Ipomoea batatas* (L.) Lam. (Convolvulaceae), as compared to those of other organs. Similar results were observed in fresh vine latex and root latex that showed a 3% and 10% higher content of *p*-coumarate esters than leaves and roots, respectively (Snook, 1994). Interestingly, the concentration of this type of coumarins (e.g., C16, C18, C20 (*Z*)-coumarates) is inversely correlated to the palatability for weevils. Thus, (*Z*)-coumarate esters are assumed to participate in the defense of sweet potato against insect herbivores (Snook, 1994). The latter would support the role of latex as a defense strategy.

Oxidative activation may explain much of the variation observed at the individual and ecosystem level responses to phenolics (Appel, 1993). Phenolic inositol esters (Fig. 3 B) were found to be 1 of the 3 major predominant metabolites classes in leaves, roots, and especially latex of 3 genotypes of dandelion (*T. officinale* agg. L., Asteraceae), and again in this case, the metabolites in latex were strongly repellent against generalist insects as compared to those of leaves and roots (Huber et al., 2015).

Based on these results, it can be assumed that a certain phenolic compound plays a specific role in latex. This is also supported by the fact that their oxidative activation is perfectly matched with the hypoxic conditions in the laticifer, therefore preventing pre-activation and self-plant intoxication. Furthermore, it is known that many fungi produce oxidases as detoxification mechanisms against plants, but in this case this fungal strategy could in fact activate and potentiate the biological activity of phenolic compounds.

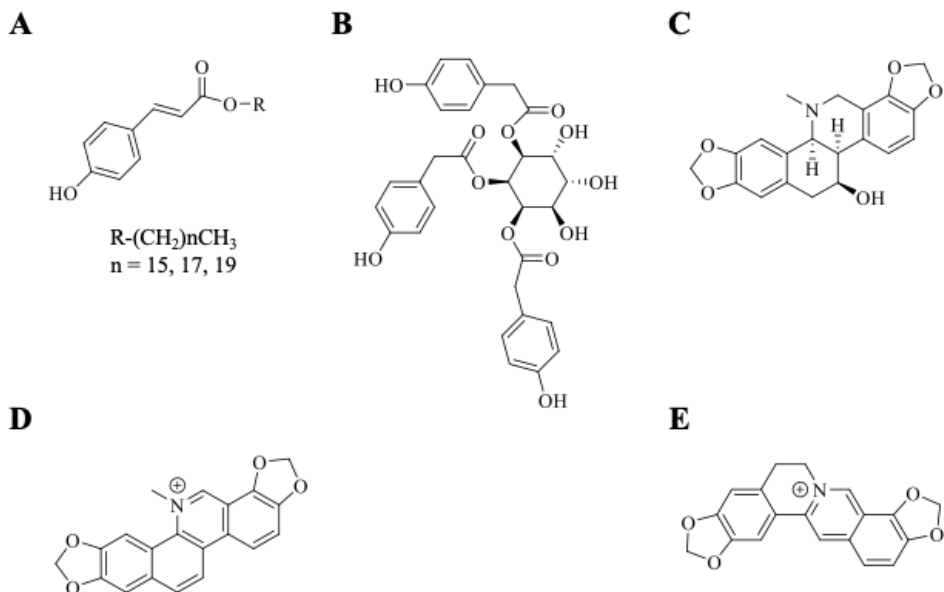
### 3.7 Alkaloids

Alkaloids are the most bioactive group of specialized metabolites found in nature. Even if many plant organs contain these compounds, especially high

concentrations are found in young organs (Hegnauer, 1988). Their main function in plants is to work as defensive compounds against herbivores, especially mammals, because of their wide range of toxic effects and deterrence capability (Harborne, 1993; Hansen et al., 2003; Macel, 2011). Some alkaloids disrupt the nervous system, especially chemical transmitters, while others can affect membrane transport, protein synthesis, and miscellaneous enzyme activities (Azarkan, 2004; Creelman and Mullet, 1997). Many types of alkaloids are found in plant exudates. They are irregularly distributed and highly concentrated among angiosperm families, including Apocynaceae, Papaveraceae, and Moraceae. For example, isoquinoline alkaloids such as chelidonine (Fig. 3 C), sanguinarine (Fig. 3 D), and coptisine (Fig. 3 E) can reach almost 20% of the fresh latex mass in *C. majus* L. (Papaveraceae) (Tomè and Colombo, 1995). Sanguinarine is especially toxic to insects and vertebrates because of its capability to affect neurotransmission, several neuroreceptors, and DNA synthesis (Agrawal and Konno, 2009; Schemeller et al., 1997).

In general, most alkaloids have some degree of toxicity and appear to be used by plants in defense against herbivores and pathogenic microorganisms. Therefore, latexes could constitute an important site for the production or storage of these compounds. In fact, some enzymes involved in the first stages of alkaloidal production are contained in parenchymal cells proximate to laticifer cells (Samanani et al., 2006) and those involved in their final biosynthetic phases are contained in the laticifer cytoplasm (Weid et al., 2004). Alkaloids in latexes are believed to have many biological roles, but to date there are not yet many reports to support such allegations. One of the few studies explored a possible mechanism of sugar-mimicking alkaloids. These imino-sugars are powerful inhibitors of glycosidases and other essential enzymes related to sugar metabolism in insects (Asano et al., 200). They were found in the latexes of mulberry (*Morus* spp., Moraceae) at levels as high as 2.5% of the latex fresh mass and 18% of the dry mass (Konno et al., 2006). Additionally, these alkaloids were found to be related to poor development of insects by growth disruption because of the inhibition of sucrose uptake and trehalose usage in several tissues (Hirayama et al., 2007).

## Chapter 2



**Fig. 3.** Chemical structures of typical phenolics and alkaloids found in latexes. A: *p*-coumarate esters, B: 4-hydroxyphenyl acid derivative of inositol, C: chelidonium, D: sanguinarine, and E: coptisine.

## 4. Physical and Chemical Implications in Latex Transportation and Coagulation

### 4.1 Latex transportation

Latex is immediately mobilized to the site of damage after either mechanical or herbivore damage. The latex of *Cryptostegia grandiflora* Roxb. ex R. Br. (Apocynaceae) was reported to be transported within the plant over a distance of more than 70 cm to a damaged point (Buttery and Boatman, 1976). The non-punctured laticifer is turgid probably due to osmotic water uptake, which could contribute to the out flow of latex whenever the laticifer is broken by any type of tissue disruption. Qualitative observations on *Euphorbia* species showed that the recovery of the normal laticifer oozing pressure takes around 1 min (Spencer, 1939). However, the

process of emptying and refilling of single laticifers has not been accurately measured yet (Spencer, 1939).

Another fact that supports the role of latex in defense instances is that the amount of the exuded latex can increase in response to insect herbivory. For example, herbivory by the larvae of the monarch butterfly (*Danaus plexippus*) on 2 *Asclepias* species resulted in an almost 2-fold increment in the amount of exuded latex (Agrawal and Konno, 2009; Rasmann et al., 2009; Bingham and Agrawal, 2010). However, the laticifer-borne system is very susceptible to damage, especially when ducts in the proximal areas are destroyed. In such cases, the leaf area that is distant to the point of destruction has no supply of latex from the main reservoir in the proximal parts and also loses pressure to exude latex (Konno, 2011).

#### **4.2 Chemical coagulation: a physiological role of latex in plants**

The coagulation process of latex has been extensively studied due to its practical importance as it is the main limiting factor in rubber extraction for its utilization on industry. In the case of *H. brasiliensis* (Willd. ex A. Juss.) Müll. Arg. (Euphorbiaceae), one of the most well studied plants for rubber extraction, Gidrol et al., (1994) proposed that hevein, a lectin-like protein, might be involved in the coagulation of latex (Wititsuwannakul et al., 2008). Later on, a new anticoagulating factor in the C-serum of *H. brasiliensis* (Willd. ex A. Juss.) Müll. Arg. (Euphorbiaceae) latex was discovered (Wang et al., 2016). This factor, called hevea latex lectin (HLL), reinforced the previous model of latex coagulation. The HLL binding affinity to the soluble C-serum's HLL binding protein was at least 6-fold higher than the rubber particle binding protein to small rubber particles, providing a plausible explanation for the colloidal stability of latex under normal conditions (Wang et al., 2016).

In addition to these studies, a recent report on the latex coagulation mechanism of *H. brasiliensis* (Willd. ex A. Juss.) Müll. Arg. (Euphorbiaceae) showed chitinase and glucanase in primary and secondary laticifers to be playing a crucial role in rubber particle aggregation in the plant (Wang et al., 2015). Under normal conditions, chitinase does not interact with glucanase.

## Chapter 2

However, upon wounding or any mechanical damage, fresh latex flows out and the turgor pressure from laticifers suddenly decreases. This pressure decrease results in bursting of the laticifers. Consequently, the membrane embedded heveamine interacts with membrane-localized glucanase facilitating the rubber particle aggregation and subsequent rubber latex coagulation. Finally, latex vessels become plugged with rubber coagulates, which stops the latex flow (Whaler et al., 2009; Wang et al., 2015). Apart from the role of proteins on rubber particle aggregation connected to latex coagulation, the effects of other chemical factors such as enzymes and reactive oxygen species have been investigated (Wang et al., 2013; Zhang et al., 2017). The activity of enzymes such as peroxidase, catalase, and PPO have been well characterized in *T. officinale* L. (Asteraceae), *Taraxacum kok-saghyz* L. E. Rodin (Asteraceae), and other latex-bearing plants (Wang et al., 2013). Especially in *Taraxacum* species, PPO activity is one of the main factors controlling the coagulation mechanism. The rate of latex coagulation was found to be strongly correlated with the level of laticifer-specific PPO activity in *Ficus elastica* Roxb. ex. Hornem (Moraceae) and some Asteraceae plants, but not in *H. brasiliensis* (Willd. ex A. Juss.) Müll. Arg. (Euphorbiaceae). These findings show that the coagulation chemical processes are species dependent. However, it is important to bear in mind that coagulation processes do not involve only chemical changes but can also involve physical factors (Bauer et al., 2014). Physical differences such as rubber particle size, temperature, and water evaporation can also have a significant influence on the coagulation process. Larger particle sizes provide a larger surface area for rubber particle contact during rubber aggregation, leading most likely to different coagulation speed among species (Bauer et al., 2014). Besides, water evaporation speed at the latex plug contributes to the reduction of the latex coagulum volume, also increasing the rubber particles collision frequency and, consequently, the coagulation speed (Bauer et al., 2014).

The speed of water evaporation is affected by environmental factors such as temperature and humidity. For example, high temperature combined with low humidity can produce faster water evaporation and faster coagulation. In general, different latex coagulation mechanisms seem to occur not only

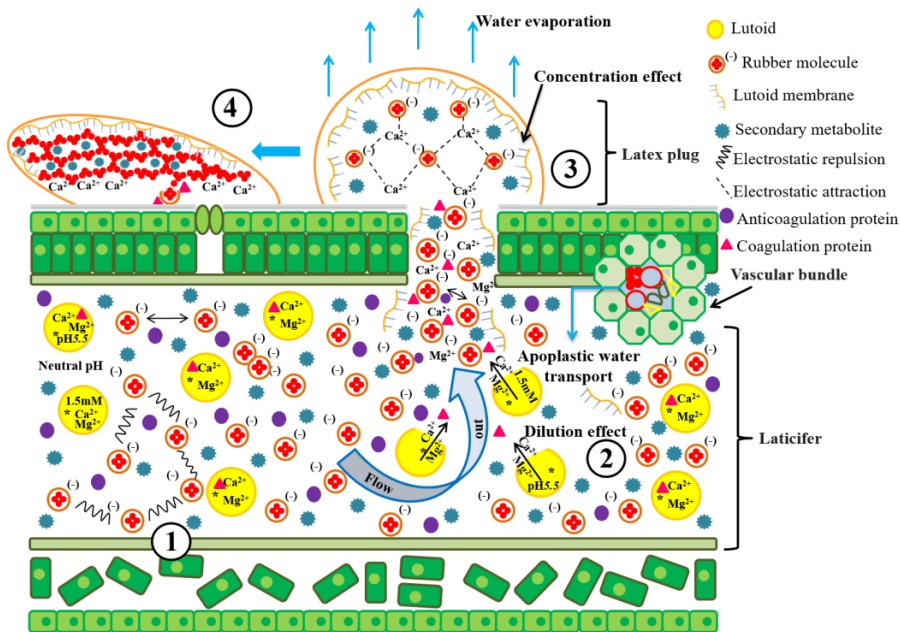
among different plant families but also among species belonging to the same plant family (Bauer et al., 2014). However, if one would ignore differences in specific coagulation factors and instead would focus on chemical families, it could be possible to find a general principle in latex coagulation process in rubbery latexes at least. This common trend always involves the rubber and protein fractions, plus the main environmental factors, temperature and humidity, and their physicochemical consequences such as divalent cation stoichiometric ratios and pH changes.

In this regard, here we propose a general model for latex coagulation involving 4 general steps. The first step is an “equilibrium state.” In these conditions, the laticifers are in normal physiological conditions and not disrupted by any mechanical rupture. All latex components such as lutoids, Frey-Wyssling complexes, rubber particles, specialized metabolites, and coagulant and anticoagulant proteins are suspended in the C-serum at neutral pH. The negatively charged rubber particles help to stabilize the latex colloidal suspension by negative-negative charge repulsion (Wititsuwannakul et al., 2003; Hierrezuelo et al., 2010; Oncsik et al., 2014; d’Azucac and Jacob, 1989). In the second step, “laticifer rupture,” the strong decrease of pressure plus the entrance of water by apoplastic transport through the vascular bundles lead to the lysis of the lutoids (Pickard, 2008). After the cells burst,  $\text{Ca}^{2+}$  and  $\text{Mg}^{2+}$  ions are released into the C-serum (d’Azucac and Jacob, 1989). Then an electrostatic interaction between the positive charges of the released ions and the negative charges of the rubber particles start the rubber aggregation process. After this and depending on the bursting lutoid index (number of broken lutoids), the concentration of coagulant proteins will surpass the concentration of anticoagulant proteins, as occurs in *H. brasiliensis* (Willd. ex A. Juss.) Müll. Arg. (Euphorbiaceae) (Wititsuwannakul et al., 2008; Wang et al 2005). This phenomenon reinforces the process of rubber aggregation. The presence of exposed lutoid membranes attached with positively charged proteins additionally serves as an agglutination factor. These membrane complexes are very specific for rubber particle recognition in rubber aggregation, working as a bridge for rubber particle interconnections. After this, all of the agglutinated particles and the secondary metabolites start to move carried by the out flow to the

## Chapter 2

rupture point, in a manner comparable to Brownian diffusion. Because of this, all of the lutoidic components will be concentrated at one single point lowering the pH at the damage point. This acidifying effect rises the coagulation speed (Oliverira-Reis et al., 2015).

In a third step, the “plug formation,” the latex mass starts to lose water because of the environmental temperature and humidity. The resulting volume reduction increases the concentration of solutes and the collision frequency among the rubber aggregates, which could remove the phospholipidic membrane covering the rubber particles and activate the rubber elongation factor (Aoki et al., 2014). The activation of this processes starts the coalescence among free-membrane rubber structures to produce a bigger rubber polymer (Bauer et al., 2014). At this point the rubber polymerization has reached an irreversible state. Finally, in the fourth step, “plug polymerization,” the latex plug is completely dry and the plug has been transformed into a polymer composed of rubber, ions, residues of lutoid membranes, and protein complexes (Fig. 4). This dried plug is able to completely seal the injury, avoiding the loss of water and other metabolites. It can also obstruct the entrance of pathogenic microorganisms to the plant vascular system. In addition to this, in this polymeric cover there is a mixture of extremely high concentrated specialized metabolites and proteins that confer additional chemical protection against herbivores via toxicity or deterrence (Fig. 4).



**Fig. 4.** A model of latex coagulation process. Four main steps are represented: (1) equilibrium state, (2) laticifer rupture, (3) plug formation, and (4) plug polymerization.

## 5. Endophytes-plant interactions shapes chemical profile of plants and their exudates

Endophytes are defined as any microorganism that intra- or extracellularly colonizes healthy plant tissues without causing apparent pathologic symptoms (Wilson, 1995). They have been isolated from scale primordia to diverse plant organs such as roots or even resin ducts (Pirttilä et al., 2000; Pirttilä et al., 2003; Hata et al., 2002; Hata and Sone, 2008). During plant-microorganism interactions, plants limit the development of endophytic populations, obliging these endophytes to evolve several biochemical strategies to gradually adapt to their new living environments (Dudeja et al., 2009). This adaptation involves circumventing several physical and chemical barriers that must be overcome to establish a successful association (Kusari et al., 2012). In this context, the balanced antagonism hypothesis was initially proposed to address how an endophyte avoids the activation of the host

## Chapter 2

immune system (Schulz et al., 1999; Schulz and Boyle, 2005). This hypothesis explains how microorganisms become resistant to toxic host metabolites and how they increase their population density without causing visible manifestations of infection (Arnold, 2006; Schulz and Boyle, 2006).

Taking into account the fact that endophytes reside within plants and are continuously interacting with their hosts, it is conceivable that plants have a substantial influence on the metabolic processes of endophytes and vice versa (Arnold, 2008). As examples, plant homoserine and asparagine act as host signals to activate the expression of a lethal gene in virulent strains of *Nectria haematococca*, which is only expressed in planta (Yang et al., 2005), and a camptothecin producing endophyte, *Fusarium solani*, has been isolated from *Camptotheca acuminata* Decne. (Nyssaceae) (Kusari et al., 2009). This endophyte was able to produce the precursors of camptothecin locally. Therefore, this type of plant-microorganism interaction raises the possibility of various recognized “plant metabolites” to actually be the metabolic products of their endophytes (Kusari and Spiteller, 2012).

### 5.1 Endophytic microorganisms inhabiting latex?

As previously mentioned, most of the plant exudates contain a large spectrum of active specialized metabolites and biomolecules. In this context, it is unlikely that they could act as possible niche for microorganisms. However, as usually happens in nature, nothing is 100% certain. Consider, for example, that the role of herbivores in the transmission of bacteria that can later behave as endophytes has already been proven (López-Fernández et al., 2017). In that case even if not discussed by the authors, it is possible that the phloem could be as disperser of the bacterial community to all of the organs of the plant. Thus, plant exudates could also have a role on the distribution of endophytic population within individual plants.

Specifically, in the case of latexes, some trypanosomatids and other monoflagellate microorganisms have been isolated for the first time from the laticifers of *Euphorbia hirta* L. (Euphorbiaceae) on the island of Mauritius (Lafont, 1909). Furthermore, infections in others *Euphorbia* species produced no evident effects on plant growth or yield. Actually, the latex of parasitized

and non-parasitized plants was microscopically undistinguishable (Bensaude, 1925; Argão, 1931). This could reflect an equilibrium between plant host and microorganisms, avoiding infectious interactions and maybe establishing an endophytic-plant interaction instead.

One more example that could prove the existence of endophytic microorganisms in latexes was observed in papaya (*Carica papaya* L., Caricaceae) shoots. After cutting them, the shoots exude latex, containing phenolics and pigments that represent a common problem for the initiation of plant tissue culture from field stocks (George, 1993; Leifert and Cassells, 2001; Thomas, 2004a; Thomas, 2004b; Thomas et al., 2007; Thomas and Kumari, 2010). The bacteria appear as a cloudy dispersion mimicking a latex exudation. Eleven strains have been isolated from these cultures, 10 Gram-negative (5X *Ralstonia mannitolilytica*, 2X *Paenibacillus* sp, 2x *Sphingomonas* sp., 1X *Pantoea* spp.) and 1 Gram-positive isolate (*Lysinibacillus fusiformis*) (George, 1993).

Recently, in *Euphorbia* latex, a study measuring communities using culture-independent methods unexpectedly revealed complex bacterial (mean: 44 species per sample; 9 plants analyzed) and fungal (mean: 20.9 species per sample; 22 plants analyzed) communities contained in these latexes (Gunawardana et al., 2015). Many of the identified taxa are known plant endophytes but have not been found in latex previously. All of these examples show how even if plant exudates are a hostile environment for microbial development, some are capable of adapting to such an environment. Other intriguing aspects that have not been considered include the following: if latexes are chemically differentiated from their bearing tissues, is also their microbiome differentiated from their bearing tissues? If so, is this microbial differentiation correlated to their chemical discrimination? How do microorganisms produce their own metabolites, are they controlled by plant signaling, do they biotransform plant metabolites, or are they a separate symbiotic defense system? Therefore, the study of associated microbial communities in plant exudate structures and their bearing tissues will contribute to the understanding of plant exudates chemical diversity and selection.

## Chapter 2

### 6. Latex as a bioactive chemical resource

Historically, latexes have been used as medicinal substances by diverse cultures across the world from the Brazilian Amazonians to Indian users (Breitbach et al., 2013; Verma, 2014). One of the best documented examples is the opium poppy (*Papaver somniferum* L., Papaveraceae). The oldest evidence of the relation between this material and mankind was found in the Mediterranean region in northwestern Italy (Merlin, 2003), where well conserved seeds of opium poppy—which apparently were grown for food, oil, and medicine production or possibly for religious cult purposes—were found (Merlin, 2003). Nowadays, latex-bearing plants are still of great importance for the industrial sector. *H. brasiliensis* (Willd. ex A. Juss.) Müll. Arg. (Euphorbiaceae) is currently the main source of natural rubber in the world, and none of the synthetically produced rubber products have surpassed the quality obtained from this tree (Venkatachalam et al., 2013). Furthermore, *Parthenium argentatum* A. Gray (Asteraceae) and *T. kok-saghyz* L. E. Rodin (Asteraceae) are 2 species used for the production of hypoallergenic and tire latex, respectively (Venkatachalam et al., 2013; Siler and Cornish, 1994).

In addition, the coagulation mechanisms of latex defense have been used as a bio-inspirational source for the production of self-healing materials (Cremaldi et al., 2018; Anandan et al., 2018; Speck and Speck, 2019). Bio-inspiration implies the conscious application of an idea or a system from nature (Speck and Speck, 2019). In this regard, the inherent protective capacity of latexes can be applied not only in the production of healing materials, but in the understanding of the selection of bioactive metabolites by plants (Agrawal and Konno, 2009; Konno, 2011; Ramos et al., 2010). Moreover, one should consider the fact that as usually occurs when a plant exudate flows out of its reservoir during plant-organism interactions, the attackers are not exposed to single compounds but to a certain combination of them (Izhaki, 2002; Kessler and Kalske, 2018). Thus, latexes can also provide a clue of the potentiation mechanisms (e.g., synergism or additive effects) of plant chemical mixtures. This would help to unravel how plants combine these specialized metabolites to achieve bioactive mixtures for their self-defense. In this context, once unraveled, the mechanisms of plant

chemical selection and their potentiation, the bio-inspiration concept can be potentially applied to the selection of bioactive metabolites and the design of their chemical mixtures against pathogenic microorganisms or insect pests. Therefore, summarizing the socioeconomic impact of the different latex-bearing plants plus their already renowned biological activities such as antibacterials, antifungals, cytotoxicity herbivore deterrence, and insecticidal effects further corroborates and reinforces the use of plant latex as a source of bioactive metabolites.

## **7. Conclusions**

The literature strongly suggests that latex is an adaptive response to environmental factors, especially associated to biotic stress such as herbivory. However, latex is able to affect both prokaryotic and eukaryotic organisms. The great amount of generally toxic compounds in latexes can account for the secondary effect against microbial agents. Moreover, among all the plant exudates, their physical and highly diverse chemical composition makes them the ultimate defense against herbivores in nature. Taking into consideration all the diverse metabolites and mechanisms contained in plant exudates and especially in latexes, it is quite clear that the key factor for plant survival in the arms race against biotic factors is their physiological and chemical complexity. In this regard, plant exudates and especially latexes represent models to unravel plant chemical mixtures resulted from successful evolutionary defensive adaptations. The search for answers to the still unknown mechanisms of plant exudates will lead to a deeper understanding of the complex network of specialized metabolites interactions, complementation, and potentiation. Therefore, the inherent defensive origin of latexes is their most valuable character as an alternative source of bioactive metabolites and possibly their combination, especially in a time where mankind is running out of active molecules and pest and microbial resistance becomes a more common problem every day.

## Chapter 2

### 8. References

- Agrawal, A.A., Konno, K., 2009. Latex: A model for understanding mechanisms, ecology, and evolution of plant defense against herbivory. *Annu. Rev. Ecol. Evol. Syst.* 40, 311–331.
- Agrawal, A.A., Lajeunesse, M.J., Fishbein, M., 2008. Evolution of latex and its constituent defensive chemistry in milkweeds (*Asclepias*): a phylogenetic test of plant defense escalation. *Entomol. Exp. Appl.* 128, 126–138.
- Agrawal, A.A., 2005. Natural selection on common milkweed (*Asclepias syriaca*) by a community of specialized insect herbivores. *Evol. Ecol. Res.* 7, 651–667.
- Akhtar, Y., Rankin, C.H., Isman, M.B., 2003. Decreased response to feeding deterrents following prolonged exposure in the larvae of a generalist herbivore, *Trichoplusia ni* (Lepidoptera: Noctuidae). *J. Insect. Behav.* 16, 811–831.
- Anandan, S., Rudolph, A., Speck, T., Speck, O., 2018. Comparative morphological and anatomical study of self-repair in succulent cylindrical plant organs. *FLORA*. 241.
- Aoki, Y., Takahashi, S., Takayama, D., Ogata, Y., Sakurai, N., Suzukim H., Asawatreratanakul, K., Wititsuwannakul, D., Wititsuwannakul, R., Shibata, D., Koyama, T., Nakayama, T., 2014. Identification of laticifer-specific genes and their promoter regions from a natural rubber producing plant *Hevea brasiliensis*. *Plant. Sci.* 225, 1–8.
- Appel, H.M., 1993. Phenolics in ecological interactions: The importance of oxidation. *J. Chem. Ecol.* 19, 1521–1552.
- Aragão, H.B., 1931. Untersuchungen über *Phytomonas françai*. *Mem. Inst. Oswaldo. Cruz.* 25, 299–306.
- Arnold, A.E., 2007. Understanding the diversity of foliar endophytic fungi: progress, challenges, and frontiers. *Fungal. Biol. Rev.* 21, 51–66.
- Arnold, A.E., 2008. Endophytic fungi: hidden components of tropical community ecology, in: Carson, W.P., Schnitzer, S.A., (Eds), *Tropical forest community ecology*. Wiley–Blackwell, West Sussex, UK, pp. 254–271.

- Asano, N., Nash, R.J., Molyneux, R.J., Fleet, G.W.J., 2000. Sugar-mimic glycosidase inhibitors: natural occurrence, biological activity and prospects for therapeutic application. *Tetrahedron*. 11, 1645–80.
- Azarkan, M., Wintjens, R., Looze, Y., Baeyens-Volant, D., 2004. Detection of three wound-induced proteins in papaya latex. *Phytochemistry*. 65, 525–534.
- Barbieri, L., Falasca, A., Franceschi, C., Licastro, F., Rossit, C.A., Stirpe, F., 1983. Purification and properties of two lectins from the latex of the euphorbiaceous plants *Hura crepitans* L. (sand-box tree) and *Euphorbia characias* L. (Mediterranean spurge). *Biochem. J.* 215, 433-439.
- Bauer, G., Friedrich, C., Gillig, C., Vollrath, F., Speck, T., Holland, C., 2013. Investigating the rheological properties of native plant latex. *J. R. Soc. Interface*. 11, 20130847.
- Bauer, G., Gorb, S.N., Klein, M.C., Nellesen, A., von Tapavicza, M., Speck, T., 2014. Comparative study on plant latex particles and latex coagulation in *Ficus benjamina*, *Campanula glomerata* and three *Euphorbia* species. *PLoS one*. 9 (11), e113336
- Bensaude, M., 1925. Flagellates in plants: a review of foreign literature. *Phytopathology*. 15, 273–281.
- Bingham, R.A., Agrawal, A.A., 2010. Specificity and trade-offs in the induced plant defense of common milkweed *Asclepias syriaca* to two lepidopteran herbivores. *J. Ecol.* 98, 1014–1022.
- Bouteau, F., Dellis, O., Bousquet, U., Rona, J.P., 1999. Evidence of multiple sugar uptake across the plasma membrane of laticifer protoplasts from *Hevea*. *Bioelectrochem. Bioenerg.* 48, 135–139.
- Breitbach, U.B., Niehues, M., Lopes, N.P., Faria, J.E.Q., Brandão, M.G.L., 2013. Amazonian Brazilian medicinal plants described by C.F.P. von Martius in the 19th century. *J. Ethnopharmacol.* 147: 180–189.
- Bushman, B.S., Scholte, A.A., Cornish, K., Scott, D.J., Brichta, J.L., Vederas, J.C., Ochoa, O., Michelmore, R.W., Shintani, D.K., Knapp, S.J., 2006. Identification and comparison of natural rubber from two *Lactuca* species. *Phytochemistry*. 67, 2590–2596.

## Chapter 2

- Buttery, B.R., Boatman, S.G., 1976. Water deficits and flow of latex, in: Kozlowski, T.T. (Eds), Water deficits and plant growth. Academic Press, New York, pp. 233–89.
- Cai, X., Li, W., Yin, L., 2009. Ultrastructure and cytochemical localization of acid phosphatase of laticifers in *Euphorbia kansui* Liou. *Protoplasma*. 238, 3–10.
- Carter, C.A., Gray, E.A., Schneider, T.L., Lovett, C.M., Scott, L., Messer, A.C., Richardson, D.P. 1997. Toxicarioside B and toxicarioside C new cardenolides isolated from *Antiaris toxicaria* latex-derived dart poison. *Tetrahedron*. 53, 16959–16968.
- Chakraborti, D., Sarkar, A., Mondal, H.A., Das, S., 2009. Tissue specific expression of potent insecticidal, *Allium sativum* leaf agglutinin (ASAL) in important pulse crop, chickpea (*Cicer arietinum* L.) to resist the phloem feeding *Aphis craccivora*. *Transgenic. Res.* 18, 529–544.
- Cho, W.K., Jo, Y., Chu, H., Park, S.H., Kim, K.H., 2014. Integration of latex protein sequence data provides comprehensive functional overview of latex proteins. *Mol. Biol. Rep.* 41(3), 1469-81.
- Choudhary, P.D., Pawar, H.A., 2014. Recently investigated natural gums and mucilages as pharmaceutical excipients: An overview. *J. Pharm.* 2014, 204849.
- Cook, S.A., Sekhar, B.C., 1955. Fractions from *Hevea brasiliensis* latex centrifuged at 59,000 g. *J. Rubb. Res. Inst. Malaya*. 14, 163–167.
- Coppen, J.J., 1995. Gums, Resins and Latexes of Plant Origin. Non-Wood Forest Products 6, FAO, Rome.
- Creelman, R.A., Mullet, J.E., 1997. Oligosaccharins, brassinolides, and jasmonates: nontraditional regulators of plant growth, development, and gene expression. *Plant. Cell*. 9, 1211–1223.
- Cremaldi, J.C., Bhushan, B., 2018. Bioinspired self-healing materials: lessons from nature. *Beilstein. J. Nanotechnol.* 9, 907–935.
- D 'auzac, J., Crétin, H., Marin, B., Lioret, C., 1982. A plant vacuolar system: the lutoids from *Hevea brasiliensis* latex. *Physiol. Vég.* 20, 311–331.

- Dai, H.F., Gan, Y.J., Que, D.M., Wu, J., Wen, Z.C., Mei, W.L., 2009. A new cytotoxic 19-Nor-cardenolide from the latex of *Antiaris toxicaria*. *Molecules*. 14, 3694–3699.
- d'Azuac, J., Jacob, J.L., 1989. The composition of latex from *Hevea brasiliensis* as a laticiferous cytoplasm, in: d'Azuac, J., Jacob, J.L., Chrestin, H. (Eds), *Physiology of rubber tree latex*. CRC Press, Boca Raton, pp. 59–96.
- de Oliveira-Reis, G., Menut, P., Bonfils, F., Vaysse, L., Hemar, Y., Sanchez, C., 2015. Acid-induced aggregation and gelation of natural rubber latex particles. *Colloid Surf. A. Physicochem. Eng. Asp.* 482, 9–17.
- Decker, G., Wanner, G., Zenk, M.H., Lottspeich, F., 2000. Characterization of proteins in latex of the opium poppy (*Papaver somniferum*) using two-dimensional gel electrophoresis and microsequencing. *Electrophoresis*. 21(16), 3500-16.
- Dell, B., McComb, A.J., 1977. Plant Resins-their formation, secretion and possible functions. *Adv. Bot. Res.* 6, 277–316.
- Dhifi, W., Bellili, S., Jazi, S., Bahloul, N., Mnif, W., 2016. Essential oils' chemical characterization and investigation of some biological activities: A critical review. *Medicines*. 3, 1–16.
- Dudeja, S.S., Sheokand, S., Kumari, S., 2012. Legume root nodule development and functioning under tropics and subtropics: Perspectives and challenges. *Legume Res.* 35, 85–103.
- Dupont, J., Moreau, F., Lance, C., Jacob, J., 1976. Phospholipid composition of the membrane of lutoids from *Hevea brasiliensis* latex. *Phytochemistry*. 15, 1215–1217.
- Dussourd, D.E., 1995. Entrapment of aphids and whiteflies in lettuce latex. *Ann. Entomol. Soc. Am.* 88, 163–172.
- Esau, K., 1965. *Plant anatomy*, second ed. Wiley, New York.
- Fahn, A., 1982. *Plant anatomy*, third ed. Pergamon Press, Oxford.
- Frey-Wyssling, A., 1929. Microscopic investigations on the occurrence of resins in *Hevea* latex. *Arch. Rubber cult.* 13, 392–412.
- Fukuyama, Y., Ochi, M., Kasai, H., Kodama, M., 1993. Insect growth inhibitory cardenolide glycosides from *Anodendron affine*. *Phytochemistry*. 32, 297–301.

## Chapter 2

- Gaupels, F., Ghirardo, A., 2013. The extrafascicular phloem is made for fighting. *Front. Plant. Sci.* 4, 187.
- George, E.F., 1993. *Plant propagation by tissue culture*, second ed. Exegetic Limited, Edington, England.
- Gershenzon, J., Croteau, R., 1994. Terpenoids, in: Rosenthal, G.A., Berenbaum, M.R., (Eds). *Herbivores: Their interactions with secondary plant metabolites*. Volume 1: The chemical participants. Second edition. Academic Press Inc, London, pp. 165–219.
- Gidrol, X., Chrestin, H., Tan, H.L., Kush, A., 1994. Hevein, a lectin-like protein from *Hevea brasiliensis* (Rubber Tree) is involved in the coagulation of latex. *J. Biol. Chem.* 269, 9278–9283.
- Giner, J.L., Berkowitz, J.D., Andersson, T., 2000. Nonpolar Components of the Latex of *Euphorbia peplus*. *J. Nat. Prod.* 63, 267–269.
- Glynn, I.M., 1957. The action of cardiac glycosides on sodium and potassium movements in human red cells. *J. Physiol.* 136, 148–173.
- Gulsen, O., Eickhoff, T., Heng-Moss, T., Shearman, R., Baxendale, F., Sarath, G., Lee, D., 2010. Characterization of peroxidase changes in resistant and susceptible warm season turf grasses challenged by *Blissus occiduus*. *Arthropod. Plant. Interact.* 4, 45–55.
- Gunawardana, M., Hyde, E.R., Lahmeyer, S., Dorsey, B.L., La Val, T.P., Mullen, M., Yoo, J., Knight, R., Baum, M.M., 2015. *Euphorbia* plant latex is inhabited by diverse microbial communities. *Am. J. Bot.* 102, 1966–1977.
- Hagel, J.M., Yeung, E.C., Facchini, P.J., 2008. Got milk? The secret life of laticifers. *Trends Plant. Sci.* 13, 631–639.
- Hansen, I., Brimer, L., Mølgaard, P., 2003. Herbivore-detering secondary compounds in heterophyllous woody species of the Mascarene Islands. *Perspect. Plant Ecol. Evol. Syst.* 6, 187–203.
- Harborne, J.B., 1993. *Introduction to Ecological Biochemistry*, Fourth ed. Academic Press Inc, San Diego, California.
- Hata, K., Atari, R., Sone, K., 2002. Isolation of endophytic fungi from leaves of *Pasania edulis* and their within-leaf distributions. *Mycoscience.* 43, 369–373.

- Hata, K., Sone, K., 2008. Isolation of endophytes from leaves of *Neolitsea sericea* in broad leaf and conifer stands. *Mycoscience*. 49, 229–232.
- Hébant, C., 1981. Ontogénie des laticifères du système primaire de *Hevea brasiliensis*: une étude ultrastructurale et cytochimique. *Can. J. Bot.* 59, 974–985.
- Heftmann, E., 1975. Steroid hormones in plants. *J. Nat. Prod.* 38, 195–209.
- Hegnauer, R., 1988. Biochemistry, distribution and taxonomic relevance of higher plant alkaloids. *Phytochemistry*. 21, 2423–2427.
- Hierrezuelo, J., Vaccaro, A., Borkovec, M., 2010. Stability of negatively charged latex particles in the presence of a strong cationic polyelectrolyte at elevated ionic strengths. *J. Colloid. Interface. Sci.* 347, 202–208.
- Hirayama, C., Konno, K., Wasano, N., Nakamura, M., 2007. Differential effects of sugar-mimic alkaloids in mulberry latex on sugar metabolism and disaccharidases of Eri and domesticated silkworms: enzymatic adaptation of *Bombyx mori* to mulberry defense. *Insect. Biochem. Mol. Biol.* 37, 1348–1358.
- Hirst, E.L., Jones, J.K.W., 1958. The gums and mucilages of plants, in: Åberg, B., Albaum, H.G., Arnold, A., Badenhuizen, N.P., Bourne, E.J., Dangschat, G., Fähræus, G., Fischer, H., Foster, A.B., Goerdeler, J., Gottschalk, A., Hassid, W.Z., Haurowitz, F., Helder, R.J., Henglein, F.A., Hirst, E.L., Jones, J.K.N., Jucker, E., Kerstan, G., Lovern, J.A., Miller E.V., Neumüller, G., Preston, R.D., Rånby, B.G., Shafizadeh, F., Stacey, M., Stoll, A., Veibel, S., Vollmert, B., Wagner, A., Wanner, H., Weber, H., Whelan, W.J., Wolf, J., Wolfrom, M.L., Gordon-Young, E. (Eds.) *Aufbau · speicherung · mobilisierung und umbildung der kohlenhydrate / Formation · storage · mobilization and transformation of carbohydrates. Handbuch der Pflanzenphysiologie / Encyclopedia of Plant Physiology*. Springer, Berlin, Heidelberg, pp. 500-504.
- Hjgigh-Valitova, J.N., Sulkarnayeva, A.G., Minibayeva, F.V., 2016. Plant Sterols: Diversity, biosynthesis, and physiological functions. *Biochem. (Mosc)*. 81, 819–834.

## Chapter 2

- Huang, X., Renwick, J.A., 1994. Cardenolides as oviposition deterrents to two *Pieris* species: Structure–activity relationships. *J. Chem. Ecol.* 20, 1039–1051.
- Huang, X., Renwick, J.A.A., Sachdev–Gupta, K., 1993. A chemical basis for differential acceptance of *Erysimum cheiranthoides* by two *Pieris* species. *J. Chem. Ecol.* 19, 195–210.
- Huber, M., Triebwasser–Freese, D., Reichelt, M., Heiling, S., Paetz, C.J.N.C., Bartram, S., Schneider, B., Gershenzon, J., Erb, M., 2015. Identification, quantification, spatiotemporal distribution and genetic variation of major latex secondary metabolites in the common dandelion (*Taraxacum officinale* agg.). *Phytochemistry.* 115, 89–98.
- Hunter, J.R., 1994. Reconsidering the functions of latex. *Trees.* 9, 1–5.
- Ismun, A., Ariffin, M.M., Razak, S.B.A., Wei, O.C., Ahmad, F.T., Mubarak, A., 2018. Determination of polyphenol contents in *Hevea brasiliensis* and rubber–processing effluent. *MJAS.* 22, 185–196.
- Izhaki, I., 2002. Emodin – a secondary metabolite with multiple ecological functions in higher plants. *New Phytol.* 155, 205–217.
- Kant, M.R., Jonckheere, W., Knecht, B., Lemos, F., Liu, J., Schimmel, B.C.J., Villarreal, C.A., Ataide, L.M.S., Dermauw, W., Glas, J.J., Egas, M., Janssen, A., Van Leeuwen, T., Schuurink, R.C., Sabelis, M.W., Alba, J.M., 2015. Mechanisms and ecological consequences of plant defense induction and suppression in herbivore communities. *Ann. Bot.* 115, 1015–1051.
- Karban, R., Baldwin, T.T., 1997. *Induced responses to herbivory.* Chicago Press, Chicago.
- Kehr, J., 2006. Phloem sap proteins: their identities and potential roles in the interaction between plants and phloem–feeding insects. *J. Exp. Bot.* 57, 767–74.
- Kessler, A., Kalske, A., 2018. Plant secondary metabolite diversity and species interactions. *Annu. Rev. Ecol. Evol. Syst.* 49, 115–138.
- Kim, J.S., Kim, Y.O., Ryu, H.J., Kwak, Y.S., Lee, J.Y., Kang, H., 2003. Isolation of stress–related genes of plant particles and latex in fig tree (*Ficus carica*) and their expressions by abiotic stress or plant hormone treatments. *Plant Cell Physiol.* 44, 412–414.

- Konno, K., Hirayama, C., Nakamura, M., Tateishi, K., Tamura, Y., Hatori, M., Konno, K., 2004. Papain protects papaya trees from herbivorous insects: role of cysteine protease in latex. *Plant J.* 37, 370–378.
- Konno, K., Ono, M., Nakamura, M., Tateishi, K., Hirayama, C., Tamura, Y., Hatori, M., Konno, K., 2006. Mulberry latex rich in antidiabetic sugar-mimic alkaloids forces dieting on caterpillars. *Proc. Natl. Acad. Sci. USA.* 103, 1337–1341.
- Konno, K., 2011. Plant latex and other exudates as plant defense systems: Roles of various defense chemicals and proteins contained therein. *Phytochemistry.* 72, 1510–1530.
- Kusari, S., Hertweck, C., Spiteller, M., 2012. Chemical Ecology of Endophytic Fungi: Origins of Secondary Metabolites. *Chem. Biol.* 19, 792–798.
- Kusari, S., Spiteller, M., 2012. Metabolomics of endophytic fungi producing associated plant secondary metabolites: progress, challenges and opportunities, in: Roessner, U. (Eds.), InTech, Rijeka, Croatia, pp. 241–266.
- Kusari, S., Zühlke, S., Spiteller, M., 2009. An endophytic fungus from *Camptotheca acuminata* that produces camptothecin and analogues. *J. Nat. Prod.* 72, 2–7.
- Lafont, A., 1909. Sur la présence d'un *Leptomonas*, parasite de la classe des flagellés, dans le latex de l'*Euphorbia pilulifera*. *C. R. Soc. Biol.* 66, 1011–1013.
- Langenheim, J.H., 2003. *Plant Resins: Chemistry, Evolution, Ecology, and Ethnobotany.* Cambridge, Portland.
- Leifert, C., Cassells, A.C., 2001. Microbial hazards in plant tissue and cell cultures. *In Vitro Cell Dev. Biol. Plant.* 37, 133–138.
- López-Fernández, S., Mazzoni, V., Pedrazzoli, F., Pertot, I., Campisano, A., 2017. A phloem-feeding insect transfers bacterial endophytic communities between grapevine plants. *Front. Microbiol.* 8, 1–17.
- Macedo, M.L.R., Freire, M.G.M., Silva, M.B.R., Coelho, L.C.B.B., 2007. Insecticidal action of *Bauhinia monandra* leaf lectin (BmoLL) against *Anagasta kuehniella* (Lepidoptera: Pyralidae), *Zabrotes subfasciatus*

## Chapter 2

- and *Callosobruchus maculatus* (Coleoptera: Bruchidae). *Biochem. Physiol. A. Mol. Integr. Physiol.* 146, 486–498.
- Macel, M., 2011. Attract and deter: a dual role for pyrrolizidine alkaloids in plant–insect interactions. *Phytochem. Rev.* 10, 75–82.
- Mahlberg, P.G., 1993. Laticifers: an historic perspective. *Bot. Rev.* 59, 1–23.
- Malcolm, S.B., 1991. Cardenolide–mediated interactions between plants and herbivores, in: Rosenthal, M.R.B. (Eds.), *Herbivores: Their interactions with secondary plant metabolites*. Vol. I: The chemical participants, 2nd edition. Blackwell Scientific, Oxford, UK, pp. 251–296.
- Mazid, M., Khan, T.A., Mohammad, F., 2011. Role of secondary metabolites in defense mechanisms of plants. *Biol. Med.* 3, 232–249.
- Mazoir, N., Benharref, A., Bailén, M., Reina, M., González–Coloma, A., 2008. Bioactive triterpene derivatives from latex of two *Euphorbia* species. *Phytochemistry*. 69, 1328–1338.
- Merlin, M.D., 2003. Archaeological Evidence for the Tradition of Psychoactive Plant Use in the Old World. *Econ. Bot.* 57, 295–323.
- Metcalf, C.R. 1967. Distribution of latex in the plant kingdom. *Econ. Bot.* 21, 115–125.
- Mooibroek, H., Cornish, K., 2000. Alternative sources of natural rubber. *Appl. Microbiol. Biotechnol.* 53, 355–365.
- Nawrot, R., 2017. Defense-related proteins from *Chelidonium majus* L. as important components of its latex. *Curr. Protein Pept. Sci.* 18(8), 864–880.
- Noack, E.A., Crea, A.E.G., Falsone, G., 1980. Inhibition of mitochondrial oxidative phosphorylation by 4–deoxyphorboltriester, a poisonous constituent of the latex sap of *Euphorbia biglandtloosa* Desf. *Toxicol.* 18, 165–174.
- Nor, H.M., Ebdon, J.R., 1998. Telechelic liquid natural rubber: A review. *Prog. Polym. Sci.* 23, 143–177.
- Oncsik, T., Trefalt, G., Csendes, Z., Szilagyi, I., Borkovec, M., 2014. Aggregation of negatively charged colloidal particles in the presence of multivalent cations. *Langmuir.* 30, 733–741.

- Pandey, B.P., 2001. Plant Anatomy, sixth ed. S. Chand and Company, New Delhi.
- Pasteels, J.M., Gregoire, J.C. 1983. The chemical ecology of defense in arthropods. *Ann. Rev. Entomol.* 28, 263–289.
- Paul, W.C.G., Veitch, N.C., Stevenson, P.C., Simmonds, M.S.J., 2011. Cardenolides from *Gomphocarpus sinaicus* and *Pergularia tomentosa* (Apocynaceae: Asclepiadoideae) deter the feeding of *Spodoptera littoralis*. *Arthropod. Plant Interact.* 5, 219–225.
- Paula, S., Tabet, M.R., Ball, W.J., 2005. Interactions between cardiac glycosides and sodium/potassium-ATPase: three-dimensional structure-activity relationship models for ligand binding to the E2-Pi form of the enzyme versus activity inhibition. *Biochemistry.* 44, 498–510.
- Pickard, W.F., 2008. Laticifers and secretory ducts: two other tube systems in plants. *New Phytol.* 177, 877–888.
- Pintus, F., Medda, R., Rinaldi, A.C., Spanò, D., Floris, G., 2010. *Euphorbia* latex biochemistry: Complex interactions in a complex environment. *Plant Biosystems.* 144, 381–391.
- Pirttilä, A.M., Laukkanen, H., Pospiech, H., Myllyla, R., Hohtola, A., 2000. Detection of intracellular bacteria in the buds of Scotch pine (*Pinus sylvestris* L.) by in situ hybridization. *Appl. Environ. Microbiol.* 66, 3073–3077.
- Pirttilä, A.M., Pospiech, H., Laukkanen, H., Myllyla, R., Hohtola, A., 2003. Two endophytic fungi in different tissues of Scots pine buds (*Pinus sylvestris* L.). *Microb. Ecol.* 45, 53–62.
- Polhamus, L.G., 1962. Rubber: botany, production, and utilization. Interscience, New York.
- Pophof, B., Stange, G., Abrell, L., 2005. Volatile organic signals in a plant–herbivore system: electrophysiological responses in olfactory sensilla of the moth *Cactoblastis cactorum*. *Chem. Senses.* 30, 51–68.
- Pujarniscle, S., 1968. Caractère lysosomal des lutoïdes du latex d'*Hevea brasiliensis*. *Physiol. Vég.* 6, 27–46.
- Ramos, M.V., Grangeiro, T.B., Freire, E.A., Sales, M.P., Souza, D.P., Araújo, E.S., Freitas, C.D.T., 2010. The defensive role of latex in

## Chapter 2

- plants: detrimental effects on insects. *Arthropod. Plant Interact.* 4, 57–67.
- Rasmann, S., Agrawal, A.A., Cook, S.C., Erwin, A.C., 2009. Cardenolides, induced responses, and interactions between above- and belowground herbivores of milkweed (*Asclepias* spp.). *Ecology.* 90, 2393–2404.
- Renwick, J.A.A., 1996. Diversity and dynamics of crucifer defenses against adults and larvae of cabbage butterflies, in: Romeo, J.T., Saunders, J.A., Barbosa, P. (Eds.), *Recent advances in phytochemistry. Phytochemical diversity and redundancy in ecological interactions.* Plenum Press, New York, pp. 57–79.
- Repke, K.R.H., 1985. New developments in cardiac glycoside structure–activity relationships. *Trends Pharmacol. Sci.* 6, 275–278.
- Ryan, C.A., 1990. Protease inhibitors in plants: Genes for improving defenses against insects and pathogens. *Annu. Rev. Phytopathol.* 28, 425–449.
- Sacchetti, G., Ballero, M., Serafini, M., Romagnoli, C., Bruni, A., Poli, F., 1999. Laticifer tissue distribution and alkaloid location in *Vinca sardoa* (Stearn) Pign. (Apocynaceae), an endemic plant of Sardinia (Italy). *Phyton.* 39, 265–275.
- Saha, P., Majumder, P., Dutta, I., Ray, T., Roy, S.C., Das, S., 2006. Transgenic rice expressing *Allium sativum* leaf lectin with enhanced resistance against sap-sucking insect pests. *Planta.* 223, 1329–1343.
- Samanani, N., Alcantara, J., Bourgault, R., Zulak, K.G., Facchini, P.J., 2006. The role of phloem sieve element and accumulation of alkaloids in opium poppy. *Plant J.* 47, 547–63.
- Sánchez-Ferrer, A., Rodríguez-López, J.N., García-Cánovas, F., García-Carmona, F., 1995. Tyrosinase: a comprehensive review of its mechanism. *Biochim. Biophys. Acta.* 1247: 1–11.
- Schmeller, T., Latz-Brüning, Wink, M., 1997. Biochemical activities of berberine, palmatine and sanguinarine mediating chemical defense against microorganisms and herbivores. *Phytochemistry.* 44, 257–66.
- Schulz, B., Boyle, C., 2005. The endophytic continuum. *Mycol. Res.* 109, 661–86.

- Schulz, B., Boyle, C., 2006. What are endophytes?, in: Schulz, B.J.E, Boyle, C.J.C., Sieber, T.N. (Eds.), *Microbial root endophytes*. Springer-Verlag, Berlin, Germany, pp. 1–13.
- Schulz, B., Römmert, A.K., Dammann, U., Aust, H.J., Strack, D., 1999. The endophyte–host interaction: a balanced antagonism. *Mycol. Res.* 103, 1275–1283.
- Seiber, J.N., Nelson, C.J., Lee, S.M., 1982. Cardenolides in the latex and leaves of seven *Asclepias* species and *Calotropis procera*. *Phytochemistry*. 21, 2343–2348.
- Sessa, R., Bennett, M.H., Lewin, M.J., Mansfirds, J.W., Beale, M.H., 2000. Metabolite profiling of sesquiterpene lactones from *Lactuca* species. *J. Biol. Chem.* 275, 26877–26884.
- Siler, D.J., Cornish, K., 1994. Hypoallergenicity of guayule rubber particle proteins compared to *Hevea* latex proteins. *Ind. Crops. Prod.* 2, 307–313.
- Snook, M.E., 1994. Characterization and quantification of hexadecyl, octadecyl and eicosyl esters of *p*-coumaric acid in the vine and root latex of sweet potato (*Ipomoea batatas* (L.) Lam.). *J. Agric. Food Chem.* 42, 2589–2595.
- Speck, O., Speck, T., 2019. An overview of bioinspired and biomimetic self-repairing materials. *Biomimetics*. 4: 26.
- Spencer, H.J., 1939. The effect of puncturing individual latex tubes of *Euphorbia wulfenii*. *Ann. Bot.* 3, 227–229.
- Sun, Y., Tan, D.Y., Baskin, C.C., Baskin, J.M., 2012. Role of mucilage in seed dispersal and germination of the annual ephemeral *Alyssum minus* (Brassicaceae). *Aust. J. Bot.* 60, 439–449.
- Taira, T., Ohdomar, A., Nakama, N., Shimoji, M., Ishihara, M., 2005. Characterization and antifungal activity of Gazyumaru (*Ficus microcarpa*) latex chitinases: Both the chitin-binding and the antifungal activities of class I chitinase are reinforced with increasing ionic strength. *Biosci. Biotechnol. Biochem.* 69, 811–818.
- Termentzi, A., Fokialakis, N., Skaltsounis, A.L., 2011. Natural resins and bioactive natural products thereof as potential antimicrobial agents. *Curr. Pharm. Des.* 17(13), 1267–1290.

## Chapter 2

- Thomas, P., Kumari, S., Swarna, G.K., Prakash, D.P., Dinesh, M.R., 2007. Ubiquitous presence of fastidious endophytic bacteria in field shoots and index-negative apparently clean shoot-tip cultures of papaya. *Plant Cell Rep.* 26, 1491–1499.
- Thomas, P., Kumari, S., 2010. Inconspicuous endophytic bacteria mimicking latex exudates in shoot-tip cultures of papaya. *Sci. Hort.* 124, 469–474.
- Thomas, P., Swarna, G.K., Patil, P., Rawal, R.D., 2008. Ubiquitous presence of normally non-cultivable endophytic bacteria in field shoot-tips of banana and their gradual activation to quiescent cultivable form in tissue cultures. *Plant Cell Tissue Org. Cult.* 93, 39–54.
- Thomas, P., 2004. A three-step screening procedure for detection of covert and endophytic bacteria in plant tissue cultures. *Curr. Sci.* 87, 67–72.
- Thomas, P., 2004. In vitro decline in plant cultures: detection of a legion of covert bacteria as the cause for degeneration of long-term micropropagated triploid watermelon cultures. *Plant Cell Tissue Org. Cult.* 77, 173–179.
- Tomè, F., Colombo, M.L., 1995. Distribution of alkaloids in *Chelidonium majus* and factors affecting their accumulation. *Phytochemistry.* 40, 37–39.
- Turgeon, R., Oparka, K., 2010. The secret phloem of pumpkins. *Proc. Natl. Acad. Sci. USA.* 107, 13201–13202.
- Usha-Rani, P., Jyothsna, Y., 2010. Biochemical and enzymatic changes in rice as a mechanism of defense. *Acta Physiol. Plant.* 32, 695–701.
- Vainstein, A., Lewinsohn, E., Pichersky, E., Weiss, D., 2001. Floral Fragrance. New inroads into an old commodity. *Plant Physiol.* 27, 1383–1389.
- Van Beilen, J.B., Poirier, Y., 2007. Establishment of new crops for the production of natural rubber. *Trends Biotechnol.* 25, 522–529.
- Van den borre, G., Smagghe, G., Van Damme, E.J., 2011. Plant lectins as defense proteins against phytophagous insects. *Phytochemistry.* 72, 1538–1550.

- Venkatachalam, P., Geetha, N., Sangeetha, P., Thulaseedharan, A., 2013. Natural rubber producing plants: An overview. *Afr. J. Biotechnol.* 12, 1297–1310.
- Verma, R.K., 2014. An ethnobotanical study of plants used for the treatment of livestock diseases in Tikamgarh District of Bundelkhand, Central India. *Asian Pac. J. Trop. Biomed.* 4, S460–S467.
- Wahler, D., Schulze-Gronover, C., Richter, C., Foucu, F., Twyman, R.M., Moerschbacher, B.M., Fischer, R., Muth, J., Prüfer, D., 2009. Polyphenoloxidase silencing affects latex coagulation in *Taraxacum* species. *Plant physiol.* 151, 334–346.
- Wang, X., Shi, M., Wang, D., Chen, Y., Cai, F., Zhang, S., Wang, L., Tong, Z., Tian, W.M., 2013. Comparative proteomics of primary and secondary laticifers reveals that chitinase and glucanase play a crucial combined role in rubber particle aggregation in *Hevea brasiliensis*. *J. Proteome Res.* 12, 5146–5159.
- Wang, X., Wang, D., Sun, Y., Yang, Q., Chang, L., Wang, L., Meng, X., Huang, Q., Jin, X., Tong, Z., 2015. Comprehensive proteomics analysis of laticifer latex reveals new insights into ethylene stimulation of natural rubber production. *Sci. Rep.* 5, 13778.
- Wang, Y., Yang, L., Chen, X., Ye, T., Zhong, B., Liu, R., Wu, Y., Chan, Z., 2016. Major latex protein-like protein 43 (MLP43) functions as a positive regulator during abscisic acid responses and confers drought tolerance in *Arabidopsis thaliana*. *J. Exp. Bot.* 67, 421–434.
- Webster, C.C., Baulkwill, W.J., 1989. *Rubber*, Longman Scientific & Technical, New York.
- Weid, M., Ziegler, J., Kutchan, T.M., 2004. The roles of latex and the vascular bundle in morphine biosynthesis in the opium poppy, *Papaver somniferum*. *Proc. Natl. Acad. Sci. USA.* 101, 13957–13962.
- Wilson, D. 1995. Endophyte – the evolution of the term, a clarification of its use and definition. *Oikos.* 73, 274–276.
- Wititsuwannakul, D., Rattanapittayaporn, A., Wititsuwannakul, R., 2003. Rubber biosynthesis by a *Hevea* latex bottom-fraction membrane. *J. Appl. Polym. Sci.* 87, 90–96.

## Chapter 2

- Wititsuwannakul, R., Pasitkul, P., Jewtragoon, P., Wititsuwannakul, D., 2008. *Hevea* latex lectin binding protein in C-serum as an anti-latex coagulating factor and its role in a proposed new model for latex coagulation. *Phytochemistry*. 69, 656–662.
- Yang, Z., Rogers, L.M., Song, Y., Guo, W., Kolattukudy, P.E., 2005. Homoserine and asparagine are host signals that trigger in planta expression of a pathogenesis gene in *Nectria haematococca*. *Proc. Natl. Acad. Sci. USA*. 102, 4197–4202.
- Zhang, B., Tolstikov, V., Turnbull, C., Hicks, L.M., Fiehn, O., 2010. Divergent metabolome and proteome suggest functional independence of dual phloem transport systems in cucurbits. *Proc. Natl. Acad. Sci. USA*. 107, 13532–13537.
- Zhang, Y., Leclercq, J., Montoro, P., 2017. Reactive oxygen species in *Hevea brasiliensis* latex and relevance to tapping panel dryness. *Tree Physiol.* 37, 261–269.
- Zielińska, S., Jezierska-Domaradzka, A., Wójciak-Kosior, M., Sowa, I., Junka, A., Matkowski, A.M., 2018. Greater celandine's ups and downs-21 centuries of medicinal uses of *Chelidonium majus* from the viewpoint of today's pharmacology. *Front. Pharmacol.* 9, 299.