



Universiteit
Leiden
The Netherlands

The impact of increased atmospheric carbon dioxide on microbial community dynamics in the rhizosphere
Drigo, B.

Citation

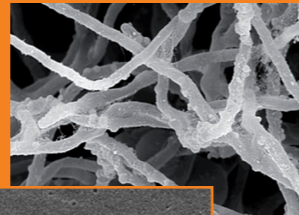
Drigo, B. (2009, January 21). *The impact of increased atmospheric carbon dioxide on microbial community dynamics in the rhizosphere*. Netherlands Institute of Ecology, Faculty of Science, Leiden University. Retrieved from <https://hdl.handle.net/1887/13419>

Version: Corrected Publisher's Version

License: [Licence agreement concerning inclusion of doctoral thesis in the Institutional Repository of the University of Leiden](#)

Downloaded from: <https://hdl.handle.net/1887/13419>

Note: To cite this publication please use the final published version (if applicable).



Barbara Drigo

The impact of increased atmospheric carbon dioxide on microbial community dynamics in the rhizosphere

IMPACT OF INCREASED ATMOSPHERIC CARBON DIOXIDE ON RHIZOSPHERE MICROBIAL COMMUNITY

NIOO thesis 69



NETHERLANDS INSTITUTE OF ECOLOGY

Barbara Drigo



Royal Netherlands Academy of Arts and Sciences