



Universiteit  
Leiden  
The Netherlands

## **The souter-strathclyde elbow prosthesis in rheumatoid patients : an in-depth clinical, radiological and biomechanical analysis**

Lugt, J.C.T. van der

### **Citation**

Lugt, J. C. T. van der. (2010, March 11). *The souter-strathclyde elbow prosthesis in rheumatoid patients : an in-depth clinical, radiological and biomechanical analysis*. Retrieved from <https://hdl.handle.net/1887/15067>

Version: Corrected Publisher's Version

License: [Licence agreement concerning inclusion of doctoral thesis in the Institutional Repository of the University of Leiden](#)

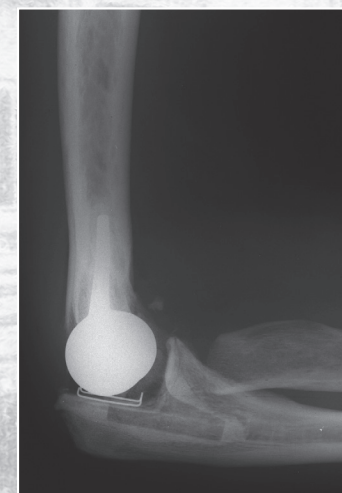
Downloaded from: <https://hdl.handle.net/1887/15067>

**Note:** To cite this publication please use the final published version (if applicable).

# The Souter-Strathclyde elbow prosthesis in rheumatoid patients

An indepth clinical, radiological and biomechanical analysis

The Souter-Strathclyde elbow prosthesis in rheumatoid patients



J.C.T. van der Lugt

J.C.T. van der Lugt