

Cover Page



Universiteit Leiden

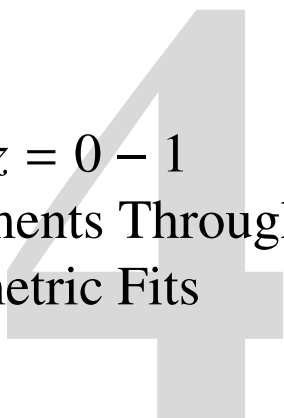


The handle <http://hdl.handle.net/1887/20961> holds various files of this Leiden University dissertation.

Author: Mosleh, Moein

Title: The stellar mass-size evolution of galaxies from $z=7$ to $z=0$

Issue Date: 2013-06-12



On the Robustness of $z = 0 - 1$
Galaxy Size Measurements Through
Model and Non-Parametric Fits

Moein Mosleh, Rik J. Williams, Marijn Franx
Submitted to The Astrophysical Journal, 2013

Abstract

We present the size-stellar mass relations of nearby ($z = 0.01 - 0.02$) SDSS galaxies, for samples selected by color, morphology, Sérsic index n , and specific star formation rate. Several commonly-employed size measurement techniques are used, including single Sérsic fits, two-component Sérsic models and a non-parametric method. Through simple simulations we show that the non-parametric and two-component Sérsic methods provide the most robust effective radius measurements, while those based on single Sérsic profiles are often overestimates, especially for massive red/early-type galaxies. Using our robust sizes, we show that for all sub-samples, the mass-size relations are shallow at low stellar masses and steepen above $\sim 3 - 4 \times 10^{10} M_{\odot}$. The mass-size relations for galaxies classified as late-type, low- n , and star-forming are consistent with each other, while blue galaxies follow a somewhat steeper relation. The mass-size relations of early-type, high- n , red, and quiescent galaxies all agree with each other but are somewhat steeper at the high-mass end than previous results. To test potential systematics at high redshift, we artificially redshifted our sample (including surface brightness dimming and degraded resolution) to $z = 1$ and re-fit the galaxies using single Sérsic profiles. The sizes of these galaxies before and after redshifting are consistent, and we conclude that systematic effects in sizes and the size-mass relation at $z \sim 1$ are negligible. Interestingly, since the poorer physical resolution at high redshift washes out bright galaxy substructures, single-Sérsic fitting appears to provide more reliable and unbiased effective radius measurements at high z than for nearby, well-resolved galaxies.

4.1 Introduction

Correlations among galaxy physical parameters such as stellar mass, luminosity, size, velocity dispersion, and their evolution with cosmic time are crucial for understanding the formation and evolution of galaxies and imposing constraints on theoretical models of their structural assembly. Morphological scaling relations such as the relation between size and surface brightness, the correlation between size and luminosity (Kormendy 1985), and the relation between the effective radius and stellar mass (Shen et al. 2003, hereafter S03), vary for different types of galaxies. The differences between surface brightness profiles and sizes of galaxies are the products of the different physical processes governing their formation and evolution. Precise measurements of these galaxy properties at low and high redshifts thus provide strong constraints on models of galaxy formation and evolution.

Among these relations is the observed correlation between half-light radius (size) and stellar mass, which is shown for the local Universe (S03) and persists up to very high redshifts (e.g., Daddi et al. 2005, Trujillo et al. 2006b, Franx et al. 2008, Buitrago et al. 2008, Cimatti et al. 2008, van der Wel et al. 2008, Williams et al. 2010, Dutton et al. 2011, Law et al. 2012, Mosleh et al. 2011, 2012). These authors also pointed out that sizes of galaxies at fixed stellar mass decrease as the redshift increases, i.e., galaxies were smaller in the past. For instance, massive quiescent galaxies at $z \sim 2$ are about a factor of ~ 6 smaller than their counterparts at $z \sim 0$ (e.g., Daddi et al. 2005, van Dokkum et al. 2008). Understanding the mechanism of the size evolution and how galaxies reach the mass-size relation at $z = 0$ requires measuring these properties, especially sizes, very robustly in different redshift ranges.

One of the main concerns is the accuracy of galaxy size determination at high redshifts. Galaxies at higher redshifts are at larger distances and therefore are dimmer and have smaller apparent angular sizes. The low surface brightness envelopes of galaxies could fade away due to cosmological dimming and could have lower signal to noise ratios (S/N), hence, may potentially bring systematics on their real size measurements. For example, the outer parts of early-type galaxies normally fade away gradually into the background sky noise, and it is very hard to define precise edges for these types of galaxies. Underestimating the sizes of these galaxies at high redshifts could have an effect on the inferred rate of size evolution (Mancini et al. 2010).

There are several possible approaches to test the smallness of galaxies at high redshifts. Recently, Szomoru et al. (2010) used deep observations with the Wide Field Camera 3 (WFC3) instrument on board the Hubble Space Telescope (HST) to measure the size of a massive quiescent galaxy at $z \sim 2$ based on a new approach (correcting the best-fit Sérsic profile of the galaxy with the residual of the fit) to confirm the compactness of this massive galaxy at this redshift.

The other method in order to check the effects of cosmological redshift on the size/shape measurements is to artificially transform nearby galaxies to higher redshifts. Comparing derived parameters before and after redshifting provides a test for biases that may be introduced by degraded resolution and cosmological surface brightness dimming. This technique has been used in the past for different purposes, for instance assessing mor-

phologies at higher redshifts (e.g., Petty et al. 2009, Conselice et al. 2011, van den Bergh et al. 2002, Lisker et al. 2006, Giavalisco et al. 1996). Recently, Barden et al. (2008) used a set of ~ 100 local galaxies to study the cosmological redshifting effect on size and shape of galaxies at $0.1 < z < 1.1$. They created new images from the best-fit single Sérsic models of their input images, and then redshifted them to show that there is not any systematics on the size and morphological parameters. However, nearby galaxies have signs of different sub-structures and low surface brightness features. Generating simulated galaxies with a comparable range of properties of galaxies and adding them into the blank sky background images is a practical test. However, these mock objects are simple cases compare to real objects and could be assumed as a lower limit on the systematics (e.g., Trujillo et al. 2006b).

It is also a common practice to measure the surface brightness profile of galaxies at high- z single component Sérsic profile fitting. Therefore, it is assumed that for a consistent comparison of sizes at low and high- z , the profiles of nearby galaxies also should be measured with the same method. However, as mentioned earlier, galaxies often consist of multiple components (e.g., bars, bulges, compact cores, spiral arms, etc.). In the local Universe, these sub-components are well-resolved and distinguishable in the photometric analysis of their structures. Therefore their surface brightness profiles may deviate from a single component model. It has been shown that using extra components in fitting surface brightness profiles of nearby galaxies better describes the underlying stellar distributions than using canonical single Sérsic profile fitting (e.g., for Elliptical galaxies: Ferrarese et al. 1994, Lauer et al. 1995, Graham et al. 2003, Huang et al. 2012, also see references therein). Some authors have also shown that using single component Sérsic profile fitting for nearby galaxies with more than one component might systematically bias sizes and morphological parameters (e.g., Meert et al. 2012, Bernardi et al. 2012).

Therefore, in this paper, we first investigate the biases associated with estimating sizes of nearby galaxies using single Sérsic profile fitting and its effect in their comparison to galaxies at high redshifts. These effects will also be tested against various types of galaxies (e.g., classifications according to their morphology, color, star-formation rate). We will explore the possible dependence of the systematics of sizes on the galaxies classifications and test alternate (two-component and nonparametric) methods.

We also artificially redshift real images of nearby galaxies ($z \sim 0$) to $z = 1$ in order to investigate the uncertainties of parameter measurements. We will use the resolution of HST WFC3 instrument, since images from this instrument are now being widely used for studying galaxy structures at high redshifts (Oesch et al. 2010, Szomoru et al. 2012, Patel et al. 2012, Newman et al. 2012, Mosleh et al. 2012, van de Sande et al. 2012, etc.). Moreover, for the sake of better statistics, we use a large sample of nearby galaxies (~ 1000 objects).

Finally, we will use our robust size measurements to study the correlation of size and stellar masses of our nearby galaxies. Galaxies can be selected or classified by means of different methods or criteria, such as morphology, color and star-formation rate. We investigate the mass-size relation for different types of nearby galaxies at a wide range of stellar masses and test whether the selection criteria could affect the mass-size relations. These relations provide a baseline for further studies at high redshifts. We will also

compare the mass-size relations of galaxies after artificially redshifting them to $z = 1$ and examine if the robustness of galaxies mass-size relations at high redshifts.

We explain our sample used in this study in section 4.2. The size determination methods and their systematic offsets at $z \sim 0$ are explored in section 4.3. The stellar mass-size relations of nearby galaxies are studied in section 4.4. We describe the artificially redshifting procedure of galaxies to $z = 1$ and their sizes compare to $z = 0$ in section 4.5. We discuss our results in section 4.6. The cosmological parameters adopted throughout this paper are $\Omega_m = 0.3$, $\Omega_\Lambda = 0.7$ and $H_0 = 70 \text{ km s}^{-1} \text{ Mpc}^{-1}$.

4.2 Data

The sample of galaxies we use for this study is selected from the MPA-JHU SDSS DR7 (Kauffmann et al. 2003, Salim et al. 2007) which have spectroscopic redshifts for SDSS DR7 galaxies (Abazajian et al. 2009) galaxies. The surface brightness limit for our sample is $\mu_{50} \leq 23 \text{ mag arcsec}^2$ with magnitude limit of $r \leq 17.77$. We initially select galaxies to have spectroscopic redshifts within $0.01 < z < 0.02$ and stellar masses of $\log(M_*/M_\odot) \geq 9$. As we intend further to artificially redshift galaxies to $z = 1$, the imposed redshift limits are to avoid selecting galaxies where the SDSS PSF is broader than the WFC3 PSF at $z = 1$ (and providing sufficient sampling at high- z , see Barden et al. 2008, for more details), and also to avoid objects with very large apparent sizes. To reduce processing time, we further select about 1000 galaxies randomly from this sub-sample (about one-third of galaxies in this mass and redshift range). We use SDSS r -band images for measuring their sizes at this low- z .

We classify our sample into different sub-samples based on their color, morphology and specific star-formation rate (sSFR). The left panel of Figure 4.1 shows the distributions of all galaxies on color-magnitude diagram. The color and absolute magnitude are based on the New York University Value-Added Galaxy Catalog (NYU-VAGC Blanton et al. 2005). Parallel to the red sequence distribution, we define the following line to separate galaxies into red and blue ones:

$$(g - r) = 0.68 - 0.032(M_r + 20) \quad (4.1)$$

In order to classify galaxies based on their morphology, we used the Galaxy Zoo catalog (GZ1) (Lintott et al. 2011) which is a morphological catalog of visually classified SDSS galaxies. We classify galaxies into early-types and late-types based on debiasing fraction of the votes for each galaxy being dominant (see Lintott et al. (2011) for more details). We note that the classification are only available for $\sim 94\%$ of our sample. The color magnitude distributions of these early-types and late-types are shown in middle panel of Figure 4.1. Early-type galaxies are indicated as red symbols and late-type ones as blue.

Galaxies can also be selected by means of their specific star-formation rate (sSFR) (Brinchmann et al. 2004). In the right panel of Figure 4.1, the distributions of sSFRs and stellar masses of galaxies are shown. We define the $\text{Log}(sSFR) = -11$ as a separating

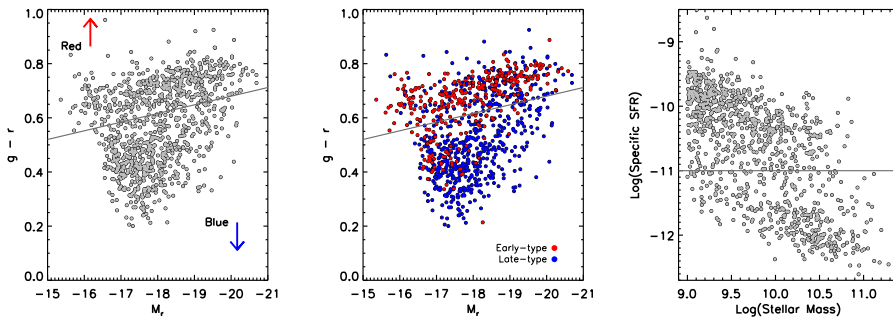


Figure 4.1 – *Left*: The color-magnitude diagram of our sample. The solid line shows the separating cut to define red and blue galaxies. *Middle*: The same as left panel but galaxies are color-coded according to their morphological classifications, i.e. Early-type galaxies as red points and Late-type galaxies as blue points. The morphological classification is based on the Galaxy Zoo Catalog (GZ1). *Right*: Distribution of galaxies specific star-formation rate (SSFR) as a function of their stellar mass; the solid line represents the separation cut at $\log(sSFR) = -11$.

cut to split our sample into star-forming and non star-forming ones. In summary, we divide our galaxies by four criteria: (1) Morphology based on Galaxy Zoo visual galaxy classifications (2) Color (3) Specific star formation rate (sSFR) (4) Sérsic indices (based on smoothed profiles of galaxies at low- z , see Appendix B).

We also need to take into account the effects of sample selections on the completeness. We follow S03 to apply volume corrections to our sample (V_{max} method). We give each galaxy a weight which is proportional to the inverse of the maximum volume out to which it can be observed. However, as our sample is limited to redshift ranges of $z = 0.01 - 0.02$, all galaxies have equal weights and hence our sample is not biased by stellar mass incompleteness down to $10^9 M_{\odot}$. It is worth noting that the fraction of galaxies which were not morphologically classified by Galaxy Zoo is $\sim 6\%$ on average and hence the effects are negligible.

4.3 Sizes at $z = 0$

As mentioned earlier, the well-resolved profiles of some of nearby galaxies could exhibit non-Sérsic structures. Consequently, this raises questions about the effects of these structures on measurements of nearby galaxy sizes (i.e., half-light radii) with single-component, analytical models. In the following, we employ several methods to measure sizes of our $z = 0.01 - 0.02$ galaxies. These methods can be separated into two main categories: ‘parametric’ i.e., measuring the half-light radius of galaxies using best-fit two-dimensional analytical models and ‘non-parametric’ from their observed one-dimensional light profiles and measuring their total fluxes as described below.

4.3.1 Parametric Methods

To quantify the structural properties of galaxies with parametric methods, we use the GALFIT v3 modeling software (Peng et al. 2010). GALFIT measures the shape and size of each galaxy by finding a best-fit parametric model of its two-dimensional surface brightness profile. It generates a range of profile models which are convolved with the PSF of the galaxy image and determines the best-fit model by comparing models to galaxy light profile and minimizing the χ^2 of the fit. GALFIT can fit one or more analytical functions such as Sérsic (Sérsic 1963, Sersic 1968), de Vaucouleurs (de Vaucouleurs 1948), etc., to a galaxy light profile.

In the following we outline the procedure for using GALFIT and measuring galaxies structural parameters from Sérsic models. We first created a postage stamp for each galaxy from SDSS (*r-band*) imaging frames (2048×1448 pixels and pixel scale of $0.396''$). The postage stamp should be large enough to contains enough background sky pixels. We initially set our postage stamps to have widths of at least 1800 pixels. However, as our galaxies have large apparent angular sizes and they might be located on different positions on SDSS frames, the postage stamp sizes varies a bit for each galaxy. Nevertheless, our defined box-size value creates a postage stamp for each galaxy $\gtrsim 10$ times larger than apparent galaxy sizes. These are sufficient for leaving the sky background as a free parameter during fitting procedure.

In order to detect and mask neighboring objects, we use SExtractor (Bertin & Arnouts 1996). For SDSS *r-band* images, we use the following SExtractor configuration parameters for detecting sources: *DETECT_MINAREA* = 10, *DETECT_THRESH* = 1.5 and *ANALYSIS_THRESH* = 1.5 and *DEBLEND_MINCONT* = 0.095. In addition, we further smoothed out the mask map created by SExtractor to reduce plausible bias of sky background estimations by contribution from undetected low flux regions around nearby sources. We also provide the initial parameters for GALFIT, such as half-light radius, magnitude, position angle and axis ratio derived from SExtractor and initially set the Sérsic index to value of 2.

The SDSS photo pipeline generates a synthesized PSF image at the central position of each galaxy using a published tool of Read Atlas Images¹. We use this code and extracted PSF images in *r-band* SDSS for each galaxy, separately. The PSF images required by GALFIT to convolve model images during fitting procedure.

4.3.1.1 Single Component Sérsic Profiles

Our first adopted parametric model for describing the galaxies surface brightness is the one component Sérsic model. Single component Sérsic profiles are widely used for determining galaxy structures and properties, especially for high redshifts galaxies. The Sérsic function describes the surface brightness of a galaxy at radius r as

$$\Sigma(r) = \Sigma_e e^{-b_n[(r/r_e)^{1/n}-1]} \quad (4.2)$$

¹ http://www.sdss.org/dr7/products/images/read_psf.html

where r_e is the half-light radius and Σ_e is the surface brightness at r_e . The shape of the galaxy profile is determined by the Sérsic index n , and the value of b_n is coupled to n (see for more details in Graham & Driver 2005).

4.3.1.2 Two-Component Sérsic Profiles

Although the single Sérsic profile describes the surface brightness of galaxies over a large dynamic range remarkably well (e.g., Kormendy et al. 2009), the departure from the simple models can be used for diagnosing the formation of the galaxies. Specifically, nearby elliptical galaxies tend to show either ‘extra light’ or ‘missing-light’ in their central regions, depending on their luminosity and different empirical functions (e.g., “core-Sérsic” or “Nuker” law) have been used and suggested to parametrize these distinct components (Ferrarese et al. 1994, Lauer et al. 2007, 1995, Graham et al. 2003, Côté et al. 2006, Hopkins et al. 2009b). However, as our sample consists of wide ranges of luminosities and morphologies, we use double Sérsic profiles which allow a variety of possible inner and outer profiles for each object (see Turner et al. 2012). Our adopted multi-component model is described as:

$$\Sigma(r) = \Sigma_{e1} e^{-b_{n1}[(r/r_{e1})^{1/n1} - 1]} + \Sigma_{e2} e^{-b_{n2}[(r/r_{e2})^{1/n2} - 1]} \quad (4.3)$$

To compute effective radii, we first analytically reconstructed the sum of the deconvolved circularized surface brightness profiles of two components from the best-fit parameters and then computed their total fluxes and consequently their half-light radii.

4.3.2 Non-Parametric Method

We test the results from these analytical models against an independent non-parametric method. The non-parametric technique do not rely on the previous assumptions about the structure of galaxies. It benefits from the galaxy observed curve of growth. In brief, the observed intensity profile of a typical galaxy is measured through elliptical isophotal fitting and from that, the growth curve of galaxy fluxes is determined. This provides the radius at which the flux reaches to half of the total value.

In details, in order to measure the half-light radius of galaxies from this method, we need to integrate the fluxes of galaxies at different radii and find the radius at which the flux reaches half their values. For this purpose, we first extract the observed surface brightness profile of galaxies using the IRAF task ELLIPSE (Jedrzejewski 1987). This procedure measures fluxes in isophotal ellipses over the galaxy image and therefore can make it possible to generate one-dimensional surface brightness profile of a galaxy.

The accuracy of this method depends on the precise measurements of galaxies total fluxes. Therefore we measure the fluxes out to ~ 400 arcsec from the galaxies center. However, the surface brightness of galaxies is low at the outer parts and hence it is very difficult to define the exact edges of galaxies. Therefore, for measuring the fluxes in the outer parts, we extrapolate the total light of galaxies beyond their *petroR90* radius (i.e., a radius containing 90% of the *petrosian* flux derived from SDSS DR7). This is done

by fitting one-dimensional Sérsic profiles to these outer regions. By integrating the light profiles estimated from our best-fit models to infinity, the total fluxes in the outer regions are estimated. Moreover, in this way, we also estimate the sky background for each galaxy as sky value is left as a free parameter during the fitting procedure. Then for each galaxy, we integrate fluxes at different radii up to radius smaller than *petroR90* from the fluxes measured by ellipse fitting and add them to the fluxes estimated in the outer region. This gives the total fluxes of galaxies and hence leading to extract the radii at which contains half of the total fluxes, i.e., their non-parametric half-light radii. We note that for about less than 7% of the galaxies, the one dimensional fitting to the outer parts using *petroR90* are not converged. Hence we used *petroR50* which is radius contains 50% of the flux within *petrosian* magnitude. In order to check if the results depend on the choice of radius for the rest of the sample, we repeated the procedure by fitting the outer parts of galaxies starting at smaller radii of i.e., *petroR50*. The results were perfectly consistent for all galaxies. We note that we fixed the ellipticity (E) and the position angle ($P.A.$) of the ellipse isophotes to the values obtained from the best-fit of single Sérsic parametric method.

The sizes derived from non-parametric method are also needed to be corrected for point spread function (PSF) broadening and therefore we use the following relation according: $R = \sqrt{(r_{1/2})^2 - (r_{PSF})^2}$, where $r_{1/2}$ and r_{PSF} are the derived non-parametric half-light and PSF size, respectively. This correction is only important for very small galaxies ($\lesssim 1$ kpc). It is also worth noting that that all sizes derived in this paper are circularized, using \sqrt{ab} , in which a is the semimajor axis and b/a is the axis ratio. This removes the effects of ellipticity (e.g., Trujillo et al. 2006b, Franx et al. 2008, Williams et al. 2010).

4.3.3 Simulations (I) & (II)

We perform simulations for testing our methods and procedures as follows. The first one is designed to test the reliability of the single component Sérsic method and the non-parametric method for galaxies at $z = 0$. For that, we first generated single Sérsic mock galaxies with random properties (magnitude, r_e , b/a) in similar range of values for real galaxies. We then add them into the empty regions of the r -band SDSS images and perform our fits, using single Sérsic profiles and the non-parametric method. The results are shown in Figure 4.2. In the left panel, the comparison between input and output sizes are shown using parametric method and the Sérsic indices are compared in the middle panel. The output sizes derived by using the non-parametric method are also compared to their original sizes in the right panel of Figure 4.2. The sizes of galaxies can be recovered without any systematics with median differences less than 2% for both methods. There are also no systematic errors in the recovery of Sérsic indices. This shows that for mock galaxies with single Sérsic profiles, our procedure are robust in recovery of their properties from SDSS images.

As shown in Appendix A (Figure 4.10), sizes of galaxies derived using single Sérsic profile fitting can be biased, especially for massive early-type galaxies. This may be caused by the existence of additional component(s) or non-Sérsic light profiles. We

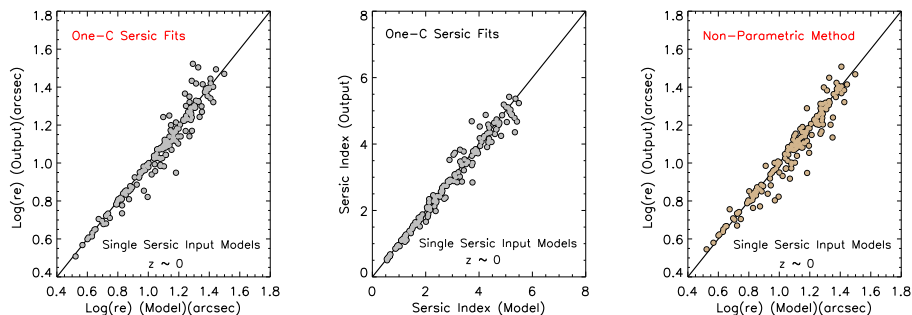


Figure 4.2 – *Simulation (I)*: The comparison between sizes of simulated galaxies (models with ‘single’ Sérsic profiles) and their recovered sizes (using single Sérsic component fittings in left panel and using Non-parametric method in right panel) and Sérsic indices (middle panel) after adding them into empty regions of SDSS r -band images. As plots show, there is no systematics in recovery of parameters of single Sérsic model galaxies for both methods.

have also shown that sizes derived with double Sérsic component, are smaller than sizes from one component models. We test an idealized case using simulated two-component objects. For that, we first created a sample of 300 two-component Sérsic galaxies such that each model galaxy has a central component with median half-light radius of ~ 1 kpc and the outer component with median size of ~ 3 kpc. We also assumed that the central components have larger median Sérsic indices than the outer-part components. For all galaxies, the central components are ~ 0.6 magnitude fainter than the other one. These numbers are derived from the average results of the two-component fits to our real galaxies at $z = 0.01 - 0.02$. To ensure that we are testing only the effects of multi component galaxies, only the sky background levels are added to the images of these model galaxies without any additional noise or neighbouring objects. We then measure sizes of these two-component model objects using single Sérsic profile fitting and the non-parametric method. The results are shown in Figure 4.3. As seen in the left panel, the sizes are recovered robustly with the non-parametric method. However, as shown in the right panel of Figure 4.3, sizes from single Sérsic fitting are biased (larger) compared to their input half-light radii, especially for large objects. This simplified test shows that sizes from single Sérsic profile fitting can be biased for true two-component galaxies. Meert et al. (2012) use different assumptions for simulated SDSS galaxies and show the existence of bias in recovered parameters by fitting a single Sérsic profile to real two-component systems. Although our sample are quite nearby ($\sim 45 - 85$ Mpc), Bernardi et al. (2012) show the same effect for the main SDSS sample at $z \sim 0.1$. Hence, using single Sérsic sizes for local galaxies can introduce systematics in size analyses.

Nevertheless, fitting correct models to nearby galaxies is complicated. Different authors use different models to fit multi-component galaxies, e.g., traditional deVaucouleurs plus Exponential disk, Sérsic + Exponential (Meert et al. 2012), double Sérsic or even using multiple (3-4) Sérsic profiles (Huang et al. 2012). It is also the case that not all of

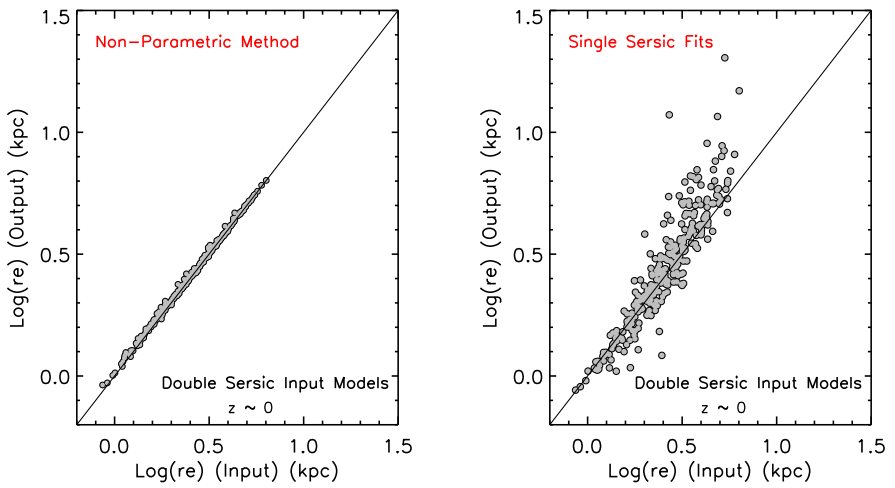


Figure 4.3 – *Simulation (II)*: The comparison between sizes (i.e., half-light radii) of simulated galaxies (models with ‘double’ Sérsic profiles) and their recovered sizes using single Sérsic component fittings (right panel) and non-parametric method (left panel). This shows that sizes derived from single Sérsic profile fitting are biased for true nearby two-component Sérsic profile objects. We note that this simulation does not include noise, in order isolate the biases caused by intrinsically complex structures.

the galaxies (at wide ranges of stellar masses) need to be measured by multi-component models ($\sim 77\%$ are robustly fit with two-component models in this work). Therefore, for the rest of this study, we use our non-parametric sizes for these $z \sim 0$ galaxies. Our simulations (*I & II*) demonstrate the robustness of our non-parametric method. In addition, due to the large angular sizes of our galaxies, the effects of the PSF on sizes from this method are negligible.

It is worth noting that fluxes used for estimating the stellar masses of SDSS galaxies are model dependent and hence these fluxes can be different from fluxes measured through the non-parametric method for each individual galaxy. Therefore, it is essential to correct the stellar masses according to the new flux measurements. We rescale the stellar mass of each galaxy by measuring the ratio between its non-parametric flux and the one used for estimating its stellar mass from the MPA catalog.

4.4 Stellar Mass-Size Relation At $z = 0$

The stellar mass-size relation for the SDSS galaxies has been studied by S03. They investigated this relation for objects which are defined as early and late types according to their Sérsic and concentration indices, and their relations have been widely used in literature. However, it is argued that the half-light sizes used in S03, which are from the NYU-VAGC catalog and based on one-dimensional (1D) single Sérsic fitting, could have been underestimated (e.g., Guo et al. 2009, Simard et al. 2011). We have also shown that using single Sérsic fitting could bias the sizes of galaxies with high stellar masses. As the mass-size relation could depend on the fitting model employed (specifically at high-mass ends), our independent non-parametric method for $z = 0$ galaxies, should remove uncertainties due to model assumptions. Our sample consists of galaxies over a wide range of stellar mass ($\gtrsim 10^9 M_\odot$) and is suitable for investigating this relation.

We first study the mass-size relation of our sub-samples based on morphological Galaxy Zoo classifications. The distribution of sizes versus stellar masses of late-type and early-type galaxies are illustrated in the top row of Figure 4.4. The median sizes in small bins of stellar masses for each sample are measured (blue and red circles), and it can be seen that sizes of both late-types and early-types show little or weak correlation with mass up to $\sim 3 - 4 \times 10^{10} M_\odot$; however the relation steepens beyond this stellar mass and is stronger for the early-type galaxies. For both types of galaxies, the relations seem to begin above specific stellar masses.

To further quantify the correlations, we use the functional form employed for late-type galaxies in S03 (equation 18) for both our late-type and early-type samples:

$$R_{kpc} = \gamma(M_*/M_\odot)^\alpha (1 + M_*/M_0)^{\beta-\alpha} \quad (4.4)$$

Where, α , β , γ and M_0 are free fitting parameters. This basically allows the relation to have two different slopes depending on the stellar mass range. The α and β represent the slopes of the relation and the characteristic mass, M_0 determine the stellar mass at which the slope of the relation changes. However, this relation is not very sensitive to the

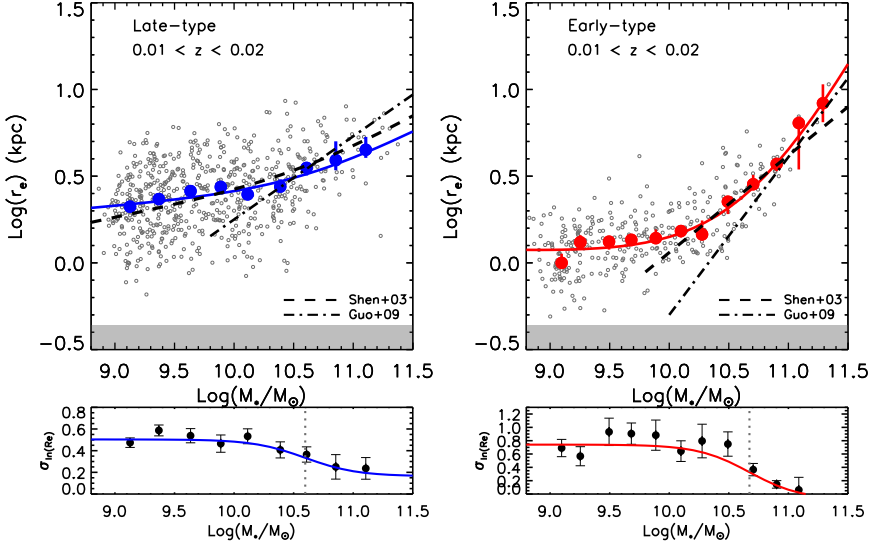


Figure 4.4 – *Top row*: The stellar mass-size relation of late-type galaxies (left panel), and early-type galaxies (right panel). The individual galaxies are shown as small open gray circles and the blue and red filled circles are the median of the sizes in stellar mass bins. The solid blue and red lines are the best fits to the data. The mass-size relation from studies of Shen et al. (2003) and Guo et al. (2009) are also illustrated by dashed and dot-dashed lines, respectively. The best-fit relations are consistent with Shen et al. (2003), however, for early-type galaxies the relation flattens below $M \lesssim 4 \times 10^{10} M_{\odot}$. The shaded gray regions show the physical sizes of PSFs in SDSS r-band images. *Bottom row*: The size dispersions as a function of stellar masses and their best-fits. The characteristic stellar masses, where the dispersions change significantly, are shown as vertical dotted lines.

characteristic mass, M_0 , therefore, this can be defined from the size dispersion relation as follows (equation 19 in S03):

$$\sigma_{\ln R} = \sigma_2 + \frac{(\sigma_1 - \sigma_2)}{1 + (M_*/M_0)^2} \quad (4.5)$$

where σ_1 and σ_2 are also free fitting parameters (representing size dispersions at low and high masses) and M_0 is the characteristic stellar mass at which $\sigma_{\ln R}$ significantly changes. Size dispersions as a function of stellar mass for late-type and early-type galaxies are shown in bottom panels of Figure 4.4 (left and right panels, respectively). The best fits to the data points are shown as solid blue and red lines and the best-fit parameters are presented in Table 4.1.

For late-type galaxies, the median size dispersions decrease at stellar mass greater than $\sim 4 \times 10^{10} M_{\odot}$ consistent with S03. The mass-size relation for these galaxies are also con-

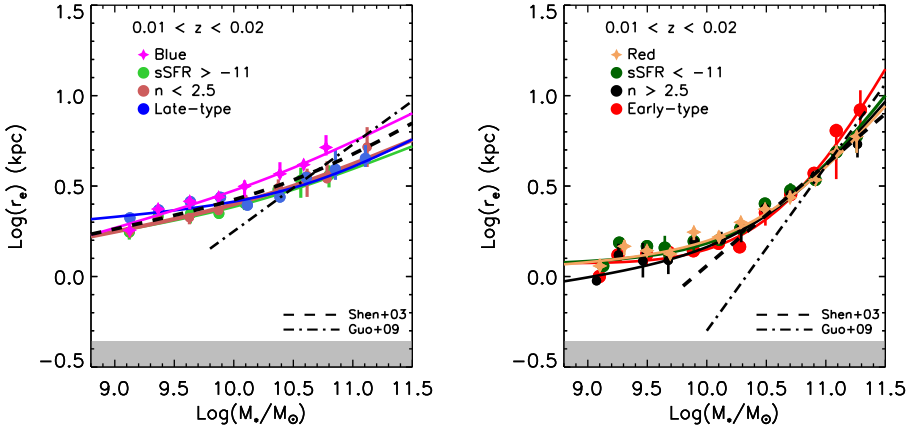


Figure 4.5 – The stellar mass-size relation of galaxies classified by means of different criteria. In the right panel, blue, late-type (visually classified), star-forming galaxies, and low-Sérsic index ($n < 2.5$) are compared and in the left panel red, early-type (visually classified), non star-forming, and $n > 2.5$ are compared. The stellar mass-size relation from studies of Shen et al. (2003) and Guo et al. (2009) are also illustrated by dashed and dot-dashed lines respectively. The points are the median size dispersions as a function of stellar mass and the lines represent the best-fits to these points. As this plot shows, the relation based on different methods of classification of galaxies are largely consistent, though blue galaxies lie above the other relations.

sistent with S03 (dashed line). The size dispersions for early-types also behave similarly and decrease for massive galaxies above a characteristic mass around $4 \times 10^{10} M_\odot$. However, due to low number of objects at these high mass bins, it is not clear how significant this effect is.

The median sizes of early-type galaxies at a stellar mass range of $\log(M_*/M_\odot) \sim 10 - 11$ are consistent with the S03 relation. However, at lower stellar masses ($\lesssim 2 \times 10^{10} M_\odot$), sizes are almost constant. Therefore, in this mass range, there is little or weak correlation between stellar mass and size. For late-type galaxies the relation runs parallel at these masses but with larger sizes. The mass-size relations for galaxies with higher stellar masses (i.e., $\gtrsim 2 \times 10^{10} M_\odot$) are steep for both late and early types. However, each sample exhibit different slopes and early-types have a steeper mass-size relation (see Table 4.1).

We also present the mass-size relations of galaxies based on different sample definitions such as color, Sérsic indices and sSFR in Figure 4.5 in order to test the effects of these selections on the mass-size relation and defining baselines for future studies based on different sample classifications. Interestingly, the mass-size relations based on these classifications are consistent to the analogous relations in Figure 4.4. In the left panel of Figure 4.5, late-type galaxies are compared to the star-forming, blue and low Sérsic index galaxies. They are almost consistent, though the blue galaxies have larger sizes

at stellar masses $\gtrsim 10^{10} M_{\odot}$ compared to the others. This could be caused by excluding edge-on galaxies using the color criterion. We should note that the Sérsic indices are measured from the degraded and smoothed SDSS images of galaxies (See Appendix B, Figure 4.15), hence removing biases from sub-structure. Nevertheless, it is interesting that the mass-size relation obtained for objects with Sérsic indices of $n < 2.5$ are consistent with S03. The best fits to the mass-size relation are summarized in Table 4.1.

The right panel of Figure 4.5 illustrates the comparison between the mass-size relation of early-type galaxies and those with red colors, low sSFR and high Sérsic indices. The relations are also consistent with each other. For all samples, the relations are curved with a weak relation for galaxies below $4 \times 10^{10} M_{\odot}$. The slopes of the mass-size relations at high mass ends (β) for these red/quiescent/ $n > 2.5$ galaxies are on average around ~ 0.85 , close to the slope of early-type central galaxies in Guo et al. (2009). However, this slope is slightly larger for early-type galaxies.

In general, we show that the stellar mass-size relations for both late and early type galaxies are curved with a steeper slope at higher stellar masses. The size dispersions bellow the characteristic masses are high but decrease above M_0 . This is the case for all our studied samples. The stellar mass-size relations based on different definitions, such as color, sSFR, morphology are consistent with the scaling relations of late and early type galaxies.

4.5 Redshifting Galaxies to $z = 1$

In order to check whether cosmological effects and observational uncertainties could affect size (and structural parameter) measurements of galaxies at high redshifts, we perform redshifting simulations of the low- z object. We use our sample of galaxies from SDSS at $z \sim 0$ to create artificially redshifted samples of galaxies resembling the same galaxies at $z = 1$ in HST WFC3 images. Our redshifting procedure is similar to the method described by Barden et al. (2008) (FERENGI code) and we briefly describe it bellow. However, in order to take into account the effects of bandpass shifting, we only use SDSS r -band images as input and using WFC3- J_{125} images from CANDELS DEEP DATA (Bouwens et al. 2012) as output images instead of using the k-correction method described in Barden et al. (2008). WFC3 is the new near-IR instrument on board of HST and covering rest-frame optical wavelengths at $z \sim 1 - 3$. Hence it is suitable for this purpose.

4.5.1 Method

The first step in the redshifting procedure is to rebin the low- z images with pixel scale p_i and redshift z_i to output images at redshift of z_o ($= 1$ in this work) and pixel scale of p_o by a factor of β as:

$$\beta = \left(\frac{D_i}{D_o}\right)\left(\frac{p_i}{p_o}\right) \quad (4.6)$$

Table 4.1 – The fitting results of the parameters in the Size-Mass relations.

Sample	α	β	$\log(\gamma)$	M_0	σ_1	σ_2
Early-type	-0.02 ± 0.07	1.25 ± 0.21	0.24 ± 0.73	10.67 ± 0.20	0.74 ± 0.07	-0.08 ± 0.24
Red	0.04 ± 0.05	0.80 ± 0.12	-0.31 ± 0.47	10.53 ± 0.13	0.75 ± 0.09	0.13 ± 0.07
$\text{Log}(SSFR) < -11$	0.01 ± 0.06	0.91 ± 0.16	-0.05 ± 0.65	10.55 ± 0.10	0.86 ± 0.11	0.13 ± 0.08
Sérsic > 2.5	0.09 ± 0.09	0.83 ± 0.21	-0.86 ± 0.90	10.53 ± 0.16	0.75 ± 0.15	0.14 ± 0.09
Late-type	0.06 ± 0.06	0.35 ± 0.18	-0.20 ± 0.55	10.60 ± 0.23	0.50 ± 0.04	0.16 ± 0.10
Blue	0.18 ± 0.08	0.33 ± 0.16	-1.40 ± 0.75	10.32 ± 0.30	0.57 ± 0.05	0.05 ± 0.12
$\log(SSFR) > -11$	0.10 ± 0.09	0.26 ± 0.19	-0.74 ± 0.83	10.20 ± 0.21	0.66 ± 0.05	0.23 ± 0.10
Sérsic < 2.5	0.12 ± 0.08	0.27 ± 0.16	-0.87 ± 0.75	10.22 ± 0.23	0.67 ± 0.05	0.24 ± 0.09

Note. The best-fit parameters for the stellar mass-size relation for different types of galaxies at $z \sim 0$ (equation 4.4 and 4.5).

where D is the angular diameter distance, expressed as $D = \frac{d}{(1+z)^2}$, and d is the luminosity distance.

The next step is to apply cosmological surface brightness dimming at the rate of $(1+z)^{-4}$ in each rebinned pixel. By considering the fact that the absolute magnitude of galaxies must be conserved, the total fluxes f of the input and output images must scale as:

$$\left(\frac{f_o}{f_i}\right) = \left(\frac{d_i}{d_o}\right)^2 \quad (4.7)$$

We note that it has been shown by several studies (e.g., Barden et al. 2005, Labbé et al. 2003) that the intrinsic surface brightness of galaxies increases with redshift. Therefore, during our procedure of artificially redshifting our galaxies, we incorporate the surface brightness evolution and making the galaxies one magnitude brighter at $z = 1$ following this equation $M_{evo} = xz + M$ and setting $x = -1$ (Barden et al. 2008).

It is important to reach the same resolution of the real data at high- z . Therefore, the next step is to correct the images to the appropriate PSF. This can be done by finding suitable kernels for convolving low- z images to reach the same PSF properties/shape at high- z . To do this, for each galaxy we require two PSFs, i.e., its low- z and high- z PSFs. We use low- z PSFs from SDSS (the ones we used for measuring sizes at $z \sim 0$) and for high- z , the median-stacked PSF which made from non-saturated stars in the J_{125} WFC3 images. Then, by transformation of PSFs into Fourier space, finding their ratio and transforming the results back into spatial domain, we can find the convolution kernels required to reach the WFC3's J_{125} band PSF. Note that we calculate separately a transformation function for each galaxy as the kernel depends on the input and output redshifts.

After transforming images to the high- z resolution an pixel scale, the last step is to add background noise to the images. For this, we put galaxy images into random empty regions of the J_{125} band CANDELS DEEP images and then measure their structural parameters as described below. We note that, in order to check the effects of sky variations on galaxy property measurements, we repeated this step by inserting each redshifted galaxy into multiple empty regions. The final measured size/parameter for each object is the median of these seven realizations.

The procedure to measure the structural properties of artificially redshifted galaxies (i.e., size and Sérsic index) is similar to that used in Mosleh et al. (2012). In brief, we used GALFIT to find the best-fit single Sérsic model for each galaxy. Neighbouring objects are detected by running SExtractor and masked during profile fitting. Initial parameter guesses, such as magnitude, half-light radius and axis ratio are provided from the SExtractor output. We used the median-stacked PSF from stars in the field. In Figure 4.6, we show the SDSS postage stamp images of the galaxies (late-types in the left set of panels and early-types in the right set of panels) at low- z (the left columns) and after redshifting to $z = 1$ (middle columns). The best-fit single Sérsic models of these artificially redshifted galaxies at high- z are shown in the right columns.

We perform two sets of simulations to test the size measurement accuracy in the J_{125} WFC3 images, and to check the procedure for artificially redshifting the galaxies. These

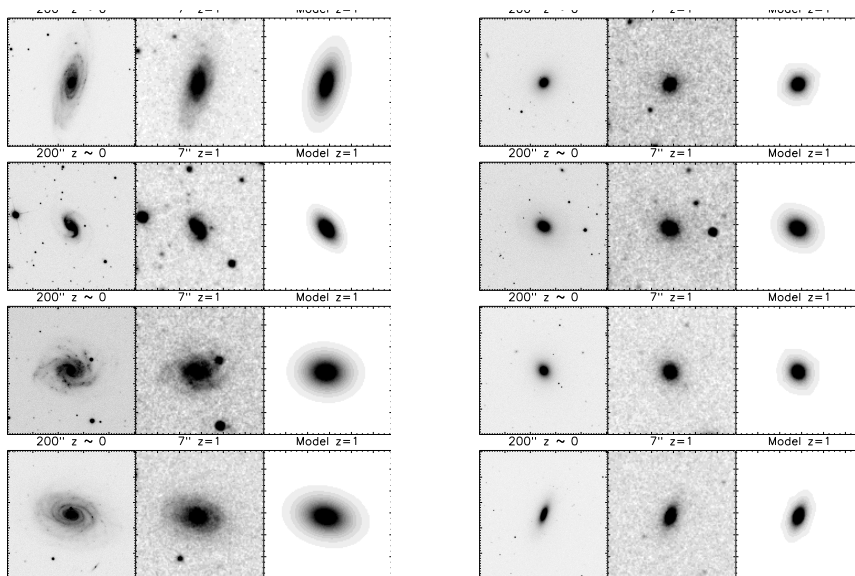


Figure 4.6 – Example images of four spiral galaxies (left set of panels) and four elliptical galaxies (right set of panels). In each set, the left panels show the SDSS (r -band) postage stamp images ($200'' \times 200''$) of galaxies at $0.01 < z < 0.015$ and in the middle columns, we show their artificially redshifted (to $z = 1$) postage stamp ($7'' \times 7''$) images after adding to WFC3- J_{125} images and in the right columns represent the best fit single Sérsic models of these redshifted galaxies.

tests are described in Appendix B. We show that our redshifting method and size measurements at high- z are robust and can recover sizes and structural parameters of model galaxies without any systematics.

However, as mentioned earlier, using single Sérsic profile fitting for more complex galaxies in the nearby Universe potentially biases size estimates. This fact raises concerns about the sizes of galaxies at high redshifts derived from single Sérsic fitting. Therefore, it is also worth checking whether single Sérsic profile fitting biases sizes of two-component objects at high redshifts. For that, we use the same simulated two-component model galaxies in section 4.3.3 (simulation (II), Figure 4.3) and redshift them to $z = 1$. We measured their sizes after redshifting with single Sérsic models. The results are shown in Figure 4.7. This shows that single Sérsic profile fits of two-component galaxies at $z = 1$ provide reliable sizes, likely due to the smaller structures being washed out at high redshift. Therefore, traditional single Sérsic surface brightness fitting robustly recovers sizes of our redshifted galaxies.

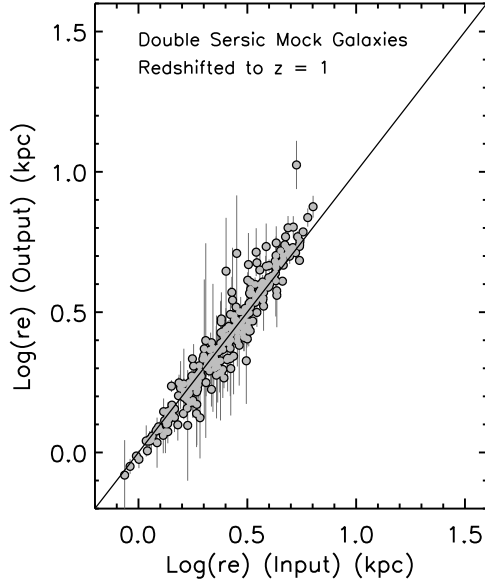


Figure 4.7 – Sizes of simulated two-component $z \sim 0$ galaxies which have been “redshifted” to $z = 1$ and remeasured with single-component Sérsic profile fitting. The input and output sizes are consistent, indicating that sizes of multi-component galaxies can be reliably derived with single-component Sérsic models at higher redshifts.

4.5.2 Comparing to Sizes at $z = 0$

In previous sections, we described how the sizes of our sample are measured reliably at both $z \sim 0$ and $z = 1$. In this section, we compare sizes of galaxies before and after redshifting to $z = 1$. The comparison between low- z and high- z sizes for all galaxies are shown in left upper panel of Figure 4.8 and their median relative differences in small bins of sizes are shown in the left bottom panel. As can be seen, sizes before and after redshifting agree well and there are no systematics.

There are also no biases if we split the sample into blue and red galaxies. Although the random scatter increases with size for red objects, there are no systematics, and on average sizes of these galaxies can be reliably recovered at high redshift. As mentioned in section 4.5.1, to check the effects of the sky background on properties of galaxies at $z = 1$, we perform different realizations by inserting the galaxies into different random blank sky regions and remeasure their properties. The galaxy parameters at $z = 1$ are the median values of these repeated measurements and the error bars illustrate the 1σ scatter. Galaxies are also color-coded according to their stellar masses.

The results are the same using different galaxy classifications. For instance, in Figure

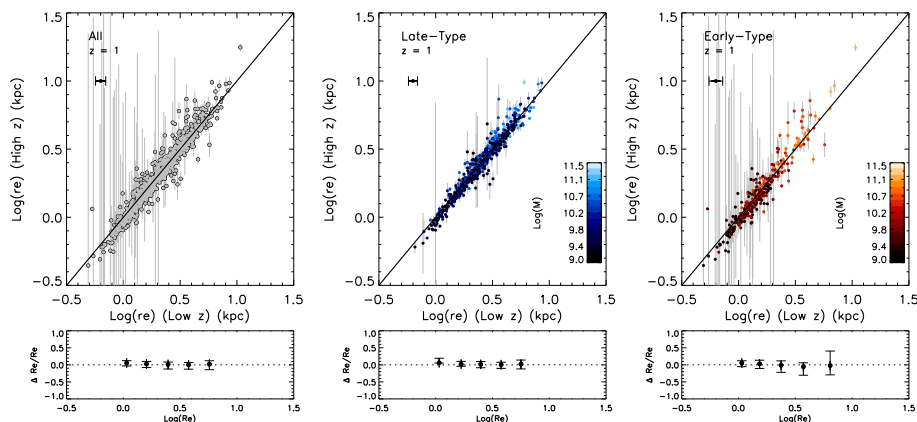


Figure 4.8 – A comparison between sizes of galaxies at low redshift to their sizes measured after artificially redshifting to $z = 1$ for all galaxies (left panel), late-type galaxies (middle panel), and early-type galaxies (right panel). The errors are the standard deviation of their sizes measured at different positions (different realizations). Sizes of galaxies are recovered after redshifting without any systematics.

4.8, the size comparison is shown for late-type (middle panel) and early-type galaxies (right panel). Although the scatter increases for large and massive early-type galaxies, there is not any systematic differences in their sizes.

It is worth noting that for sizes at $z = 0$, we used non-parametric method and for galaxies at $z = 1$ single Sérsic profile fitting is used. Using single Sérsic profile fitting at $z \sim 0$ brings systematics when comparing sizes before and after redshifting (e.g. Weinzirl et al. 2011). This is also the case for comparing Sérsic indices, which tend to be overestimated at $z \sim 0$ using single Sérsic profile fitting.

The fact that sizes of multi-component galaxies at $z = 1$ can be recovered robustly using single Sérsic fitting can be explained by the resolution limit of images at high redshifts. The differences are mostly noticeable for massive early-type galaxies. The bright centers of elliptical galaxies have typical sizes of $\lesssim 1$ kpc (e.g., Huang et al. 2012, Hopkins et al. 2009b,a) which is about the typical size of PSF FWHM of WFC3 images (~ 1.2 kpc) at $z = 1$. As a result, the inner components are smeared out and the galaxy profiles are dominated by the outer components. Therefore, using single Sérsic fitting at this redshift and resolution robustly recovers the true parameters (See Appendix B for additional tests which illustrate how degrading the resolution affects measured structural parameters of local galaxies).

We have also checked whether the results after redshifting are sensitive to the signal-to-noise (S/N) of images. This has been tested by changing the S/N, either by adding noise to the SDSS r -band images before redshifting them or arbitrarily increasing the S/N of redshifted objects. These tests did not show any systematic changes in the size of red-

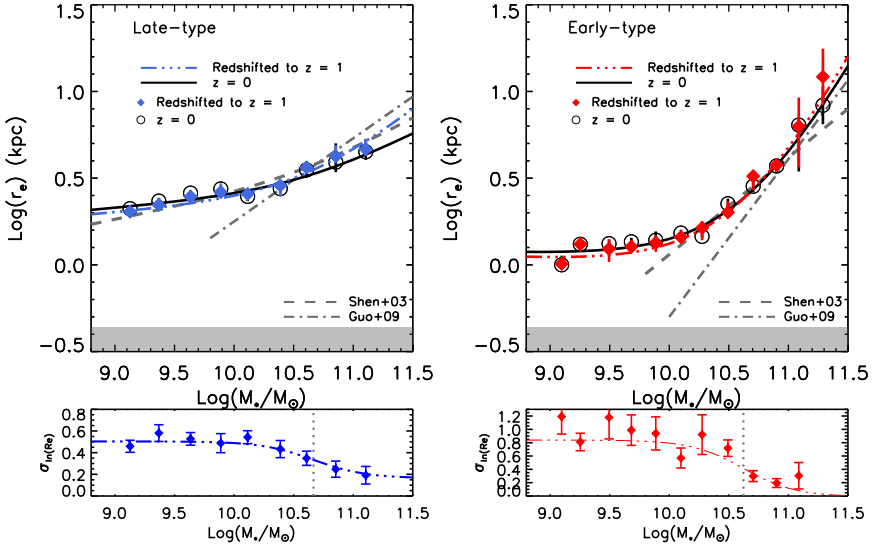


Figure 4.9 – The stellar mass-size relations and size dispersions of late-type (left panels) and early-type (right panels) galaxies are compared before and after artificially redshifting to $z = 1$. The blue and red points are the the median sizes of galaxies in mass bins and the dashed-three dotted lines are their best fits. The mass-size relations are consistent with the relations at $z = 0$ (open circles and solid lines). This further demonstrates that size-mass relations of galaxies are reliable at $z = 1$ using single Sérsic profile fitting.

shifted objects. Therefore, in general, sizes of galaxies at high redshift can be measured robustly using canonical single Sérsic profile fitting as long as the physical resolution is not better than ~ 1 kpc.

4.5.3 Stellar Mass-Size Relation after Redshifting

It would now be interesting to examine how the stellar mass-size relations look like after redshifting to $z = 1$. In Figure 4.9, comparison of the mass-size relations before and after redshifting to $z = 1$ are illustrated. The relations for late-type galaxies are shown in the left panel, where the solid blue diamonds are the median sizes after redshifting in small mass bins and the dashed-three-dotted line is the best-fit to the data. The open circles are the median sizes at $z = 0$ along with the solid black line as a best-fit (same as in Figure 4.4). The size dispersions after redshifting also shown in the bottom left panel. The relations for early-type galaxies are shown in the right panel. As can be seen, the mass-size relations are consistent to their $z = 0$ after redshifting. The poor constraints at the high stellar mass end are due to small number statistics; however, the results are consistent

within uncertainties. This Figure shows that the stellar mass-size relations based on the single Sérsic profile fitting at high redshifts are robust. Using different definitions for separating galaxies would result the same after redshifting. In Figure 4.9, we only present the relations for morphologically selected sample.

4.6 Discussion

In this paper, we use a sample of about 1000 galaxies at $0.01 < z < 0.02$ from SDSS DR7 to study their sizes and stellar mass-size relations. We first investigate the robustness of size measurement methods for these nearby galaxies, using two main procedures for determining sizes and structures: parametric methods (single and double component Sérsic profile fittings) and a non-parametric method. In agreement with recent works (e.g., Allen et al. 2006, Bernardi et al. 2012, Meert et al. 2012, Huang et al. 2012), the majority of galaxies in the nearby Universe are well fit with two component profiles. Comparing the sizes from the non-parametric method (and from double Sérsic fits) to those from single Sérsic fits shows the systematic overestimation of sizes from the single Sérsic method. In particular, sizes and Sérsic indices of early-type galaxies at the high stellar mass end tend to be overestimated using the single Sérsic fitting approach. Non-Sérsic profiles or substructures in nearby galaxies may to be the cause of this bias. We tested this by simulating two-component model galaxies and measuring their sizes using single Sérsic fitting and reached the same conclusion. Using single Sérsic profile fitting also overestimates the Sérsic indices of these galaxies. Therefore, we caution that relying on single Sérsic fits can introduce biases for nearby, well-resolved galaxies.

Stellar mass-size relations of $z = 0$ galaxies from surveys like SDSS are often used as baselines for quantifying the evolution of higher-redshift galaxy sizes. Using the non-parametric method and classifying our sample thorough a number of frequently-employed criteria (size, color, morphology, and Sérsic index), we have explored the stellar mass-size relation of galaxies in the nearby universe down to a stellar mass of $10^9 M_\odot$. We show that the slope of the relation varies with mass for both late-type and early-type galaxies. The relations flatten for galaxies below about $3 - 4 \times 10^{10} M_\odot$ (see also Figure 11 in Turner et al. 2012). Moreover, at these low stellar masses, the relations for both late-types and early-types run parallel but with smaller sizes for early-type objects. Above a characteristic stellar mass of $\sim 3 - 4 \times 10^{10} M_\odot$, the mass-size scaling relations get steeper with less scatter for both late- and early-types. However, the early-types have a significantly steeper relation than late-types.

In S03, the mass-size relation for early-types is reported down to stellar a mass of $\sim 10^{10} M_\odot$. They indicated that faint ellipticals were missed in the analysis due to their type classifications based on concentrations and Sérsic indices. However, they report tentative evidence that the size-luminosity relation for faint red galaxies flattens at low masses. Graham & Worley (2008) showed that the size-luminosity relation of elliptical galaxies has a varying slope. Janz & Lisker (2008) also showed a different size luminosity relation for dwarf and giant early-type galaxies in the Virgo Cluster and illustrated that the relation has little to no dependence on luminosity on the faint end. Bernardi et al.

(2012) also pointed out the flattening of the early-type mass-size relation, in agreement with what we see in the right panel of Figure 4.4. With our low- z sample reaching $10^9 M_\odot$, the flattening of the relation at low masses is clearly seen.

At the high stellar mass end ($\gtrsim 10^{11} M_\odot$), we find that the sizes of the early-type galaxies tend to be slightly larger than the S03 relation. Guo et al. (2009) also found a similar trend for early-type central galaxies (dashed-dotted lines in Figure 4.4). We note that the early-types in our sample are morphologically selected and differ from the early-types in S03 (defined as $n > 2.5$). In addition, as mentioned earlier, sizes of high Sérsic index galaxies maybe underestimated in NYU-VAGC. The number of our early-type galaxies in this stellar mass bin is low and provides only weak constraints. However, Bernardi et al. (2012) also show similar behaviour at this high-mass end. They note that the increase in the steepness of the mass-size relation for high-mass early-types could be due to BCGs (see also Bernardi 2009, Bernardi et al. 2007). They also pointed out that the steepness of the relation for early-types changes at these high stellar masses.

However, it is still not clear how the massive early-type galaxies are connected to low mass ones (i.e., $\lesssim 10^{10} M_\odot$) and how the curvature of the mass-size relation arises for these galaxies. Graham & Worley (2008) argued that the curved size-luminosity relation for elliptical galaxies is expected from the assumption of varying profile shapes of these galaxies with luminosity and they are not distinct types. However, Janz & Lisker (2008) find evidence for the different behaviour of faint and bright early-types (see also Toloba et al. 2012). Bernardi et al. (2012) also pointed out that the curvature of the early-type scaling relations might arise from the presence of other components (e.g., a disk) with the bulges of these galaxies. On the other hand, the characteristic stellar masses mentioned above are predicted by semi-analytical simulations for spheroids in Shankar et al. (2013). They show that the physical processes behind the evolution of spheroid sizes are different below and above these masses, which might naturally explain the differing relations.

For late-type galaxies, we find that the stellar mass-size relation is mostly consistent among our samples regardless of the exact definition. These relations are also consistent with the mass-size relation for late-types in S03. However, the mass-size relation for blue galaxies is somewhat offset to larger sizes and steeper than that derived for other “late-type” classifications. This is likely a consequence of the strong color-size relation pointed out by Franx et al. (2008), as well as the exclusion of red, edge-on spirals from the blue sample. The size-mass relationship among the “early-type” samples appears to be consistent regardless of the exact classification method used (elliptical, red, $n > 2.5$ and/or quiescent).

Finally, we artificially redshifted our sample to resemble $z = 1$ galaxies in WFC3 J_{125} band images and test the robustness of size and structural measurements at high redshifts. We remeasure sizes of galaxies with single Sérsic profile fitting, a common method in the literature for high redshift galaxies. Our results show that using single Sérsic profile fitting recovers the sizes of these redshifted galaxies without any systematics. Interestingly, this demonstrates that size measurements at high- z are robust, despite the single-Sérsic models failing for nearby massive early-types. We further verified this with simulations, finding that once the small components of nearby two-component galaxies are smeared out at high z , single Sérsic component fitting can adequately measure structural param-

eters. Image resolution is thus an important criterion for deciding whether to use single Sérsic profiles. At a physical resolution $\lesssim 1$ kpc, where central bright components are well-resolved, overly simple models like single Sérsic profiles can introduce biases, and a multi-component or non-parametric method should be used.

4.7 Summary

We present the mass-size relation of a sample of nearby galaxies at $z = 0.01 - 0.02$, dividing the sample based on several common classifications. We examined different methods of size measurements in order to quantify the systematics associated in each method. We also artificially redshifted these galaxies to $z = 1$ to test potential systematic effects on their size measurements at high redshifts. From our results we find that:

- Nearby early-type galaxies with masses $\gtrsim 2 \times 10^{10} M_{\odot}$ are not well fit with single Sérsic profiles. Two component fits and non-parametric methods appear to provide less-biased measurements. These methods give effective radii which are smaller than those measured with single Sérsic fits.
- The stellar mass-size relation of both late-type and early-type galaxies are steep at high masses ($\sim 3 - 4 \times 10^{10} M_{\odot}$) and flatten at low masses.
- Although single-Sérsic profile fits can be biased for nearby, well-resolved galaxies, they provide robust sizes at high redshifts.
- The stellar mass-size relations of “spiral” and “elliptical” galaxies are not particularly sensitive to the precise definition of these categories (color, Sérsic index, morphology, sSFR), with the exception of blue galaxies which follow a somewhat higher and steeper relation.

4.8 Acknowledgments

We thank Rychard Bouwens for providing us CANDELS DEEP images. We also thank Jarle Brinchmann, Daniel Szomoru, Roozbeh Davari and Simone Weinmann for useful discussions.

Funding for the SDSS and SDSS-II has been provided by the Alfred P. Sloan Foundation, the Participating Institutions, the National Science Foundation, the U.S. Department of Energy, the National Aeronautics and Space Administration, the Japanese Monbukagakusho, the Max Planck Society, and the Higher Education Funding Council for England. The SDSS Web Site is <http://www.sdss.org/>.

The SDSS is managed by the Astrophysical Research Consortium for the Participating Institutions. The Participating Institutions are the American Museum of Natural History, Astrophysical Institute Potsdam, University of Basel, University of Cambridge, Case

Western Reserve University, University of Chicago, Drexel University, Fermilab, the Institute for Advanced Study, the Japan Participation Group, Johns Hopkins University, the Joint Institute for Nuclear Astrophysics, the Kavli Institute for Particle Astrophysics and Cosmology, the Korean Scientist Group, the Chinese Academy of Sciences (LAMOST), Los Alamos National Laboratory, the Max-Planck-Institute for Astronomy (MPIA), the Max-Planck-Institute for Astrophysics (MPA), New Mexico State University, Ohio State University, University of Pittsburgh, University of Portsmouth, Princeton University, the United States Naval Observatory, and the University of Washington.

4.9 Appendix A

4.9.1 Failure of Single Sérsic Fitting at $z = 0$

Surface brightness profiles of galaxies in the local Universe rarely conform to simple analytic models (e.g., Allen et al. 2006, Simard et al. 2011). However, single Sérsic profile fitting is widely used for measuring their structural parameters. In order to test whether or not using single Sérsic fitting can bias the sizes of local galaxies with well-resolved profiles, we compare the half-light radii of our sample determined through different methods described in the text. In Figure 4.10, sizes of galaxies measured by using single Sérsic profile fitting are compared to their sizes derived from the non-parametric method. In the left top panel, the comparison is shown for all galaxies and in the left bottom panel, the relative median differences of sizes as a function of single Sérsic sizes are illustrated. As can be seen, for small galaxies, the median differences are small, however for large galaxies, the systematic differences reach to $\sim 25\%$, i.e., sizes from single Sérsic profile fitting are systematically larger than sizes from the non-parametric method for these galaxies. To diagnose the systematics, we show the comparison for blue and red galaxies separately in the middle and right panel of Figure 4.10, respectively. This shows that for blue ones the systematics are less than $\sim 10\%$, except for the large size end ($\sim 20\%$). However, for the red galaxies the systematic trend is significant and increases towards larger and massive objects (right bottom panel).

We also compare half-light radii from one-component Sérsic profile fitting and two-component Sérsic profile fitting in Figure 4.11. As it shows, sizes from single Sérsic fitting are on average larger for large and massive ones than sizes from two-component models. Specifically, for the red galaxies (right panels of Figure 4.11), there is a systematic bias toward larger sizes.

The fact that sizes from single Sérsic fitting are larger than sizes from the non-parametric method and two-component models, raises the question of how the half-light radii from one-component Sérsic profile fitting could have been overestimated? As an example, a typical profile of an early-type galaxy is shown in Figure 4.12. In the left panel, the observed profile is shown as black circles and the non-parametric fit overplotted as a blue line. The red line is the best single Sérsic fit to the galaxy. The single Sérsic profile to the whole observed profile does not match completely. This can be seen from the extra-light in central regions of the residual profile which is illustrated in the lower left panel (green

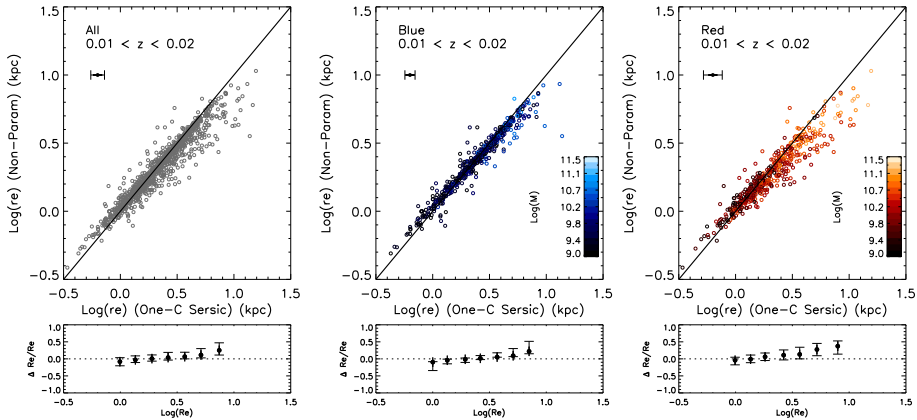


Figure 4.10 – Top rows: The comparison between sizes of galaxies at $0.01 < z < 0.02$ measured in two different ways, i.e., using single component Sérsic profiles and non-parametric method, for all galaxies (left panel), blue galaxies (middle panel) and red ones (right panel). Bottom panels, show the relative differences between sizes of galaxies as a function of their one component Sérsic sizes. The systematic differences between sizes of red galaxies increases up to about 40% and sizes based on single Sérsic profiles are larger than non-parametric sizes.

line). The half-light size from single Sérsic fitting is illustrated by black diamond and is larger than the one derived from non-parametric method (black triangle). The sizes derived using the residual-corrected method (Szomoru et al. 2010) is also shown as a black star and as can be seen, this method also gives smaller size than the single Sérsic profile fitting.

The light profile of this galaxy can be described better by adopting two-components Sérsic profiles. In the right upper panel of Figure 4.12, the two-component models and the total model are shown in dashed-dotted and solid red lines, respectively. The residual profile in the bottom right panel shows that this approach recovers most of the true profile of the galaxy. The half-light size derived from this method for this galaxy is consistent with the non-parametric size and hence smaller than single Sérsic profile fitting. It is worth testing whether the choice of PSF could introduce uncertainties. For that, we remeasure sizes of this galaxy using a nearby non-saturated star as a PSF. This gives us the same results as before. Therefore, we conclude that the SDSS synthetic PSFs do not significantly affect.

This basically shows that if massive galaxies are well-resolved or contain multiple components, structural measurements using a single analytical model could potentially be biased. We also used simulations to show this (see section 4.3.3).

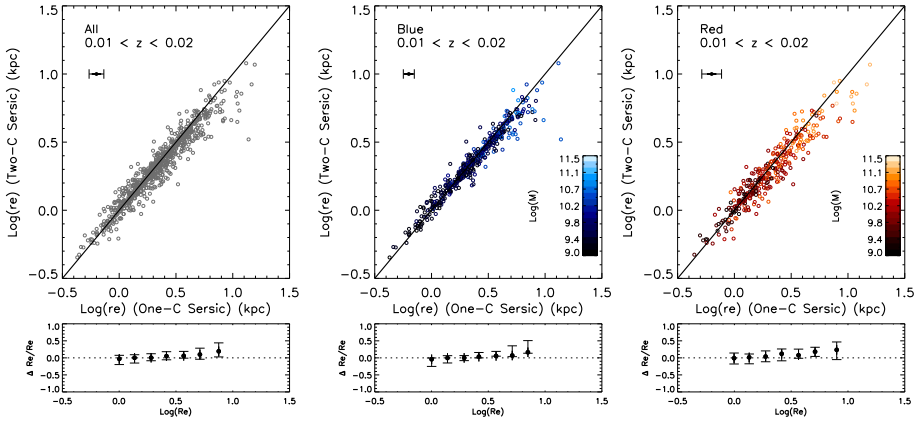


Figure 4.11 – The comparison between sizes of galaxies measured using one-component Sérsic profile fitting and two-component Sérsic surface brightness profiles (for $\sim 77\%$ of total sample). As it can be seen, galaxies which their profiles could be estimated by two-component Sérsic profiles, have smaller two-component Sérsic sizes compare to one-component Sérsic sizes.

4.10 Appendix B

4.10.1 High Redshift Simulations

In order to check how well we can recover galaxy properties in J_{125} WFC3 images, we perform simulations by generating ~ 2300 synthetic simulated galaxies (assuming single Sérsic surface brightness profile) with random properties within the following ranges: $20 < J_{125} < 26.5$, $0.5 < n < 6.5$ and $0 < r_e < 15 \text{ kpc}_{z=1}$, convolving with the J_{125} -band PSF. We further add sky background by inserting the simulated galaxy images into the empty regions of the real J_{125} -band images, and then remeasuring their structural properties with the same procedure that we use for real galaxies.

The results of the simulations are shown in Figure 4.13. Synthetic simulated galaxies are split into late-type ($n < 2.5$; left panel) and early-type ($n > 2.5$; right panel) according to their input Sérsic indices. Then they are split into small bins over the size-magnitude plane. The relative differences between input and output sizes (i.e. $\Delta(r_e)/re_{in}$) in each small bin of size-magnitude distribution are measured and shaded accordingly. Then we overplot the distribution of artificially redshifted SDSS late-type and early-type galaxies on this size-magnitude plane, shown as blue and red points, respectively. Therefore, systematics in size measurements for each redshifted object can be estimated from this plot.

As it can be seen in Figure 4.13, for late-type galaxies the systematic differences over the range of artificially redshifted SDSS galaxies are less than few percent. The systematic differences for early-type galaxies are also very small and only increase at the very

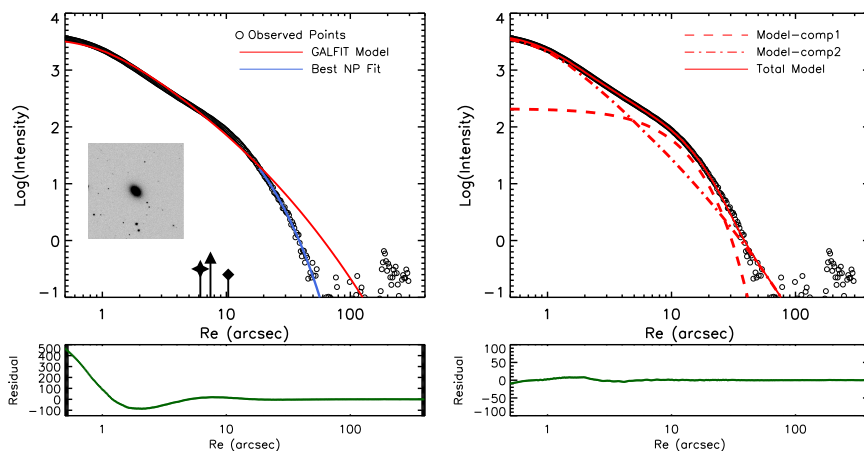


Figure 4.12 – The observed profile (black open circles) of a typical early-type galaxy. In the left panel, the red line represents the best-fit one component Sérsic profile and the blue line shows the best-fit one-dimensional Sérsic fit to the outer part of the galaxy ($> r_{p,etro,0}$ for measuring non-parametric size). In the right panel, the solid red line represent the total best fit model from two-component models. The green lines in the bottom panels show the residuals from best-fits of one component Sérsic profile. The size that derived using residual-corrected method (Szomoru et al. 2010) is shown by a filled star and non-parametric size is shown by filled triangle. The filled diamond shows the size of this galaxy using single component Sérsic profile. This plot shows that profiles of galaxies at these very low redshift might be better explained by two components profiles.

faint magnitude end (i.e. $J_{125} > 25$). In general, comparing the distribution of artificially redshifted SDSS galaxies to the uncertainties in each bin shows that the systematics are expected to be very small ($< 10\%$ at most) for most of our sample. Therefore, we expect that our size measurement procedure at high- z recovers the properties of galaxies without introducing significant systematic biases.

The next set of simulations is designed to check our redshifting procedure. For this purpose, we also create two-dimensional single Sérsic model galaxies with a similar range of properties to the nearby SDSS galaxies. We assign them similar redshifts as our SDSS galaxy sample. Then we use our code to artificially redshift these mock galaxies to $z = 1$, insert them into J_{125} WFC3 images, and remeasure their properties using the method described in section 4.5.1. The results are illustrated in Figure 4.14. In the left panel, input sizes before redshifting and output sizes after redshifting are compared; in the right panel, the comparison of input and output Sérsic indices is shown. The error bars come from the dispersion between different realizations (i.e., using different empty regions). This plot shows that the properties of these single Sérsic model galaxies can be recovered after redshifting to $z = 1$ without any systematics and hence, our redshifting procedure works robustly.

It is also discussed in the text that using single Sérsic profile fitting likely measures the true structural parameters of galaxies at high redshifts. We verify this by simulating double-component galaxies and redshifting them to $z = 1$ (simulation (II) & Figure 4.7). In addition to these results, in order to test whether using low resolution images washes out the sub-components and changes the galaxies measured structural parameters, we remeasure galaxy sizes at $z = 0$ using single Sérsic profile fitting from their degraded images; i.e., images which are binned (by a factor of 4) and Gaussian smoothed. Figure 4.15 shows the sizes (top row panels) and Sérsic indices (bottom row panels) of these galaxies after smearing. It can be seen that sizes and Sérsic indices are smaller, especially for red galaxies after degrading. The results simply illustrate that the bright central parts of galaxies can bias the measurements of the structural properties of the galaxies in the nearby universe, when a single Sérsic model is used. Also, it shows that resolution should be taken into account for structural parameter measurements.

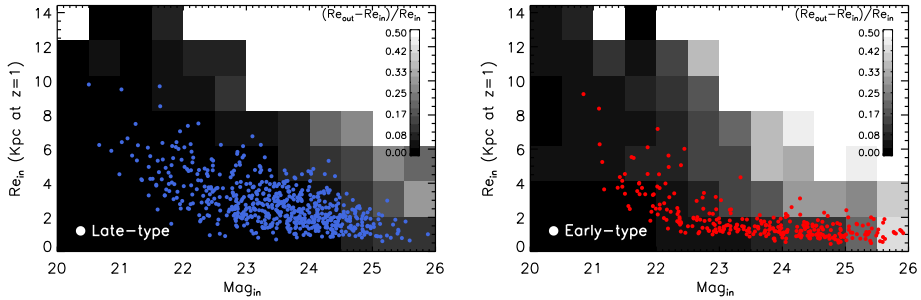


Figure 4.13 – The relative differences between input and output sizes of synthetic simulated galaxies (simulation III) are measured in small bins over the (input) size-magnitude plane (left panel: $n < 2.5$ and right panel: $n > 2.5$). In each bin, the colors correspond to the median relative differences between recovered and input sizes of simulated galaxies. The red and blue points represent the artificially redshifted SDSS galaxies (*Left panel*: Late-type galaxies and *Right panel*: Early-type galaxies) on the size-magnitude plane. This shows that the systematics on size measurements of our galaxies are very small over their size-magnitude distributions.

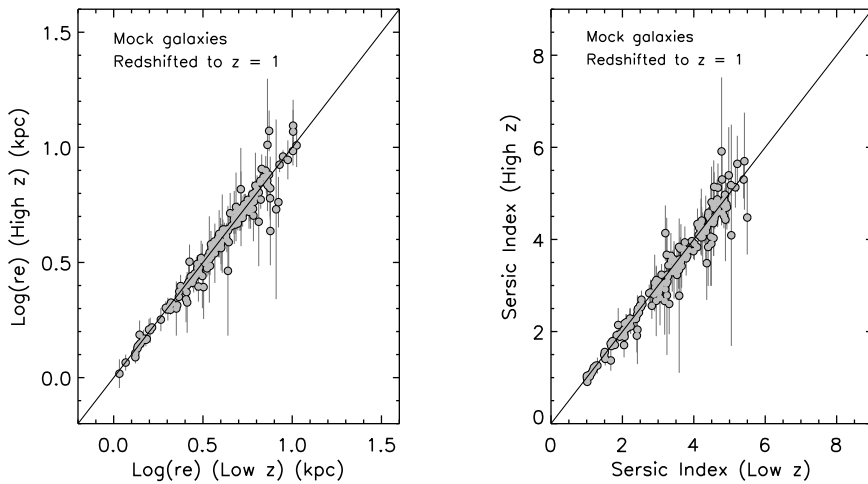


Figure 4.14 – Artificial single Sérsic model SDSS galaxies are created and then redshifted to $z = 1$ using our procedure. The left panel shows the comparison between their input sizes (at $z \sim 0$) to their sizes after artificially redshifted. The right panel illustrates the comparison between the input and output Sérsic indices. The results indicate that our procedure recovers the parameters of Sérsic model galaxies and there are no systematics on the measured sizes and Sérsic indices after redshifting these mock galaxies.

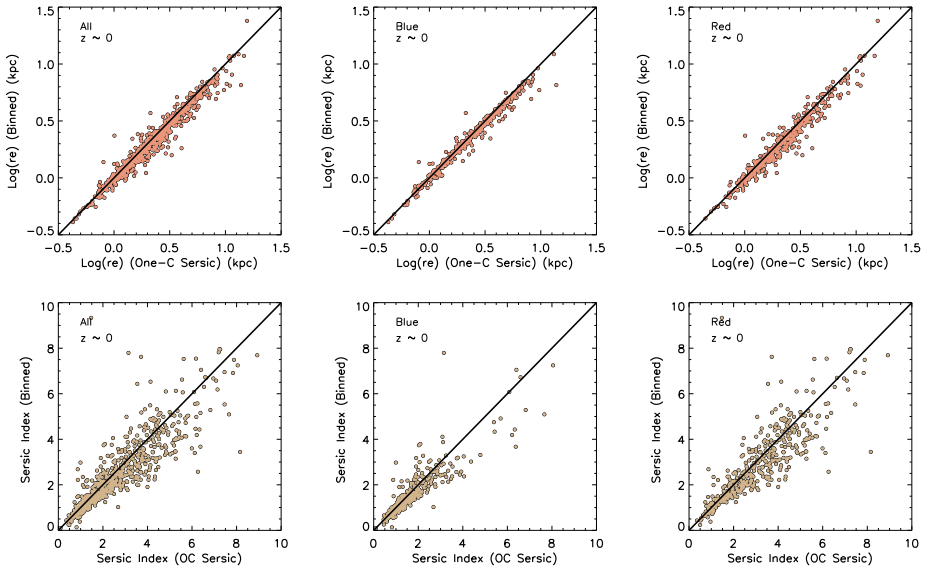


Figure 4.15 – Comparison of sizes (top row) and Sérsic indices (bottom row) of galaxies at $z = 0$ derived from single component Sérsic fits of SDSS galaxies before (labeled as One-component) and after degrading the resolution (labeled as Binned; through binning and smoothing). This test shows that using single Sérsic fitting for well-resolved images of nearby galaxies could result in overestimating parameters such as sizes and Sérsic indices in compared to lower resolution images.

Bibliography

- Abazajian, K. N., et al. 2009, ApJS, 182, 543
- Allen, P. D., Driver, S. P., Graham, A. W., Cameron, E., Liske, J., & de Propris, R. 2006, MNRAS, 371, 2
- Barden, M., Jahnke, K., & Häußler, B. 2008, ApJS, 175, 105
- Barden, M., et al. 2005, ApJ, 635, 959
- Bernardi, M. 2009, MNRAS, 395, 1491
- Bernardi, M., Hyde, J. B., Sheth, R. K., Miller, C. J., & Nichol, R. C. 2007, AJ, 133, 1741
- Bernardi, M., Meert, A., Vikram, V., Huertas-Company, M., Mei, S., Shankar, F., & Sheth, R. K. 2012, arXiv:1211.6122
- Bertin, E., & Arnouts, S. 1996, A&AS, 117, 393
- Blanton, M. R., et al. 2005, AJ, 129, 2562
- Bouwens, R. J., et al. 2012, ApJ, 754, 83
- Brinchmann, J., Charlot, S., White, S. D. M., Tremonti, C., Kauffmann, G., Heckman, T., & Brinkmann, J. 2004, MNRAS, 351, 1151
- Buitrago, F., Trujillo, I., Conselice, C. J., Bouwens, R. J., Dickinson, M., & Yan, H. 2008, ApJ, 687, L61
- Cimatti, A., et al. 2008, A&A, 482, 21
- Conselice, C. J., Bluck, A. F. L., Ravindranath, S., Mortlock, A., Koekemoer, A. M., Buitrago, F., Grützbauch, R., & Penny, S. J. 2011, MNRAS, 417, 2770
- Côté, P., et al. 2006, ApJS, 165, 57
- Daddi, E., et al. 2005, ApJ, 626, 680
- de Vaucouleurs, G. 1948, Annales d'Astrophysique, 11, 247
- Dutton, A. A., et al. 2011, MNRAS, 410, 1660
- Ferrarese, L., van den Bosch, F. C., Ford, H. C., Jaffe, W., & O'Connell, R. W. 1994, AJ, 108, 1598
- Franx, M., van Dokkum, P. G., Schreiber, N. M. F., Wuyts, S., Labbé, I., & Toft, S. 2008, ApJ, 688, 770
- Giavalisco, M., Livio, M., Bohlin, R. C., Macchetto, F. D., & Stecher, T. P. 1996, AJ, 112, 369
- Graham, A. W., & Driver, S. P. 2005, pasa, 22, 118
- Graham, A. W., Erwin, P., Trujillo, I., & Asensio Ramos, A. 2003, AJ, 125, 2951
- Graham, A. W., & Worley, C. C. 2008, MNRAS, 388, 1708
- Guo, Y., et al. 2009, MNRAS, 398, 1129
- Hopkins, P. F., Cox, T. J., Dutta, S. N., Hernquist, L., Kormendy, J., & Lauer, T. R. 2009a, ApJS, 181, 135
- Hopkins, P. F., Lauer, T. R., Cox, T. J., Hernquist, L., & Kormendy, J. 2009b, ApJS, 181, 486
- Huang, S., Ho, L. C., Peng, C. Y., Li, Z.-Y., & Barth, A. J. 2012, arXiv:1212.2639
- Janz, J., & Lisker, T. 2008, ApJ, 689, L25
- Jedrzejewski, R. I. 1987, MNRAS, 226, 747
- Kauffmann, G., et al. 2003, MNRAS, 341, 54

- Kormendy, J. 1985, *ApJ*, 295, 73
- Kormendy, J., Fisher, D. B., Cornell, M. E., & Bender, R. 2009, *ApJS*, 182, 216
- Labbé, I., et al. 2003, *ApJ*, 591, L95
- Lauer, T. R., et al. 1995, *AJ*, 110, 2622
- . 2007, *ApJ*, 664, 226
- Law, D. R., Steidel, C. C., Shapley, A. E., Nagy, S. R., Reddy, N. A., & Erb, D. K. 2012, *ApJ*, 745, 85
- Lintott, C., et al. 2011, *MNRAS*, 410, 166
- Lisker, T., Debattista, V. P., Ferreras, I., & Erwin, P. 2006, *MNRAS*, 370, 477
- Mancini, C., et al. 2010, *MNRAS*, 401, 933
- Meert, A., Vikram, V., & Bernardi, M. 2012, arXiv:1211.6123
- Mosleh, M., Williams, R. J., Franx, M., & Kriek, M. 2011, *ApJ*, 727, 5
- Mosleh, M., et al. 2012, *ApJ*, 756, L12
- Newman, A. B., Ellis, R. S., Bundy, K., & Treu, T. 2012, *ApJ*, 746, 162
- Oesch, P. A., et al. 2010, *ApJ*, 709, L21
- Patel, S. G., et al. 2012, arXiv:1208.0341
- Peng, C. Y., Ho, L. C., Impey, C. D., & Rix, H.-W. 2010, *AJ*, 139, 2097
- Petty, S. M., de Mello, D. F., Gallagher, III, J. S., Gardner, J. P., Lotz, J. M., Mountain, C. M., & Smith, L. J. 2009, *AJ*, 138, 362
- Salim, S., et al. 2007, *ApJS*, 173, 267
- Sérsic, J. L. 1963, *Boletín de la Asociación Argentina de Astronomía La Plata Argentina*, 6, 41
- Sersic, J. L. 1968, *Atlas de galaxias australes*
- Shankar, F., Marulli, F., Bernardi, M., Mei, S., Meert, A., & Vikram, V. 2013, *MNRAS*, 428, 109
- Shen, S., Mo, H. J., White, S. D. M., Blanton, M. R., Kauffmann, G., Voges, W., Brinkmann, J., & Csabai, I. 2003, *MNRAS*, 343, 978
- Simard, L., Mendel, J. T., Patton, D. R., Ellison, S. L., & McConnachie, A. W. 2011, *ApJS*, 196, 11
- Szomoru, D., Franx, M., & van Dokkum, P. G. 2012, *ApJ*, 749, 121
- Szomoru, D., et al. 2010, *ApJ*, 714, L244
- Toloba, E., Boselli, A., Peletier, R. F., Falcón-Barroso, J., van de Ven, G., & Gorgas, J. 2012, *A&A*, 548, A78
- Trujillo, I., et al. 2006b, *ApJ*, 650, 18
- Turner, M. L., Côté, P., Ferrarese, L., Jordán, A., Blakeslee, J. P., Mei, S., Peng, E. W., & West, M. J. 2012, *ApJS*, 203, 5
- van de Sande, J., et al. 2012, arXiv:1211.3424
- van den Bergh, S., Abraham, R. G., Whyte, L. F., Merrifield, M. R., Eskridge, P. B., Frogel, J. A., & Pogge, R. 2002, *AJ*, 123, 2913
- van der Wel, A., Holden, B. P., Zirm, A. W., Franx, M., Rettura, A., Illingworth, G. D., & Ford, H. C. 2008, *ApJ*, 688, 48
- van Dokkum, P. G., et al. 2008, *ApJ*, 677, L5
- Weinzirl, T., et al. 2011, *ApJ*, 743, 87
- Williams, R. J., Quadri, R. F., Franx, M., van Dokkum, P., Toft, S., Kriek, M., & Labbé, I. 2010, *ApJ*, 713, 738