



Universiteit
Leiden
The Netherlands

Imaging of coronary atherosclerosis with multi-slice computed tomography

Pundziūtė, G.

Citation

Pundziūtė, G. (2009, March 19). *Imaging of coronary atherosclerosis with multi-slice computed tomography*. Retrieved from <https://hdl.handle.net/1887/13692>

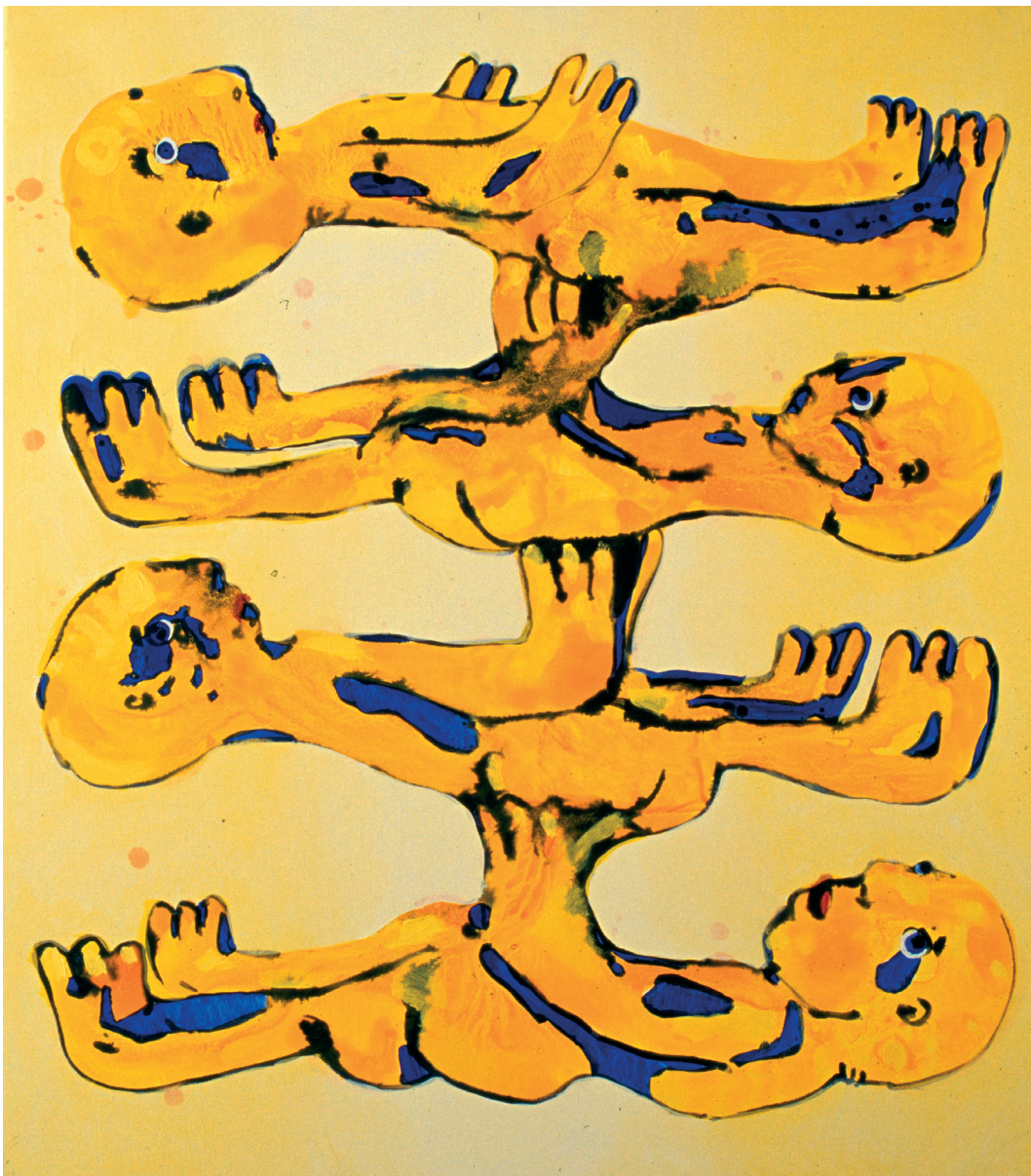
Version: Corrected Publisher's Version

License: [Licence agreement concerning inclusion of doctoral thesis in the Institutional Repository of the University of Leiden](#)

Downloaded from: <https://hdl.handle.net/1887/13692>

Note: To cite this publication please use the final published version (if applicable).

Imaging of Coronary Atherosclerosis With Multi-Slice Computed Tomography



Gabija Pundziūtė

Imaging of Coronary Atherosclerosis With Multi-Slice Computed Tomography

Gabija Pundziūtė