



Universiteit
Leiden
The Netherlands

Silk, porcelain and lacquer : China and Japan and their trade with Western Europe and the New World, 1500-1644. A survey of documentary and material evidence

LLorens Planella, M.T.

Citation

LLorens Planella, M. T. (2015, November 25). *Silk, porcelain and lacquer : China and Japan and their trade with Western Europe and the New World, 1500-1644. A survey of documentary and material evidence*. Retrieved from <https://hdl.handle.net/1887/36487>

Version: Corrected Publisher's Version

License: [Licence agreement concerning inclusion of doctoral thesis in the Institutional Repository of the University of Leiden](#)

Downloaded from: <https://hdl.handle.net/1887/36487>

Note: To cite this publication please use the final published version (if applicable).

Cover Page



Universiteit Leiden



The handle <http://hdl.handle.net/1887/36487> holds various files of this Leiden University dissertation.

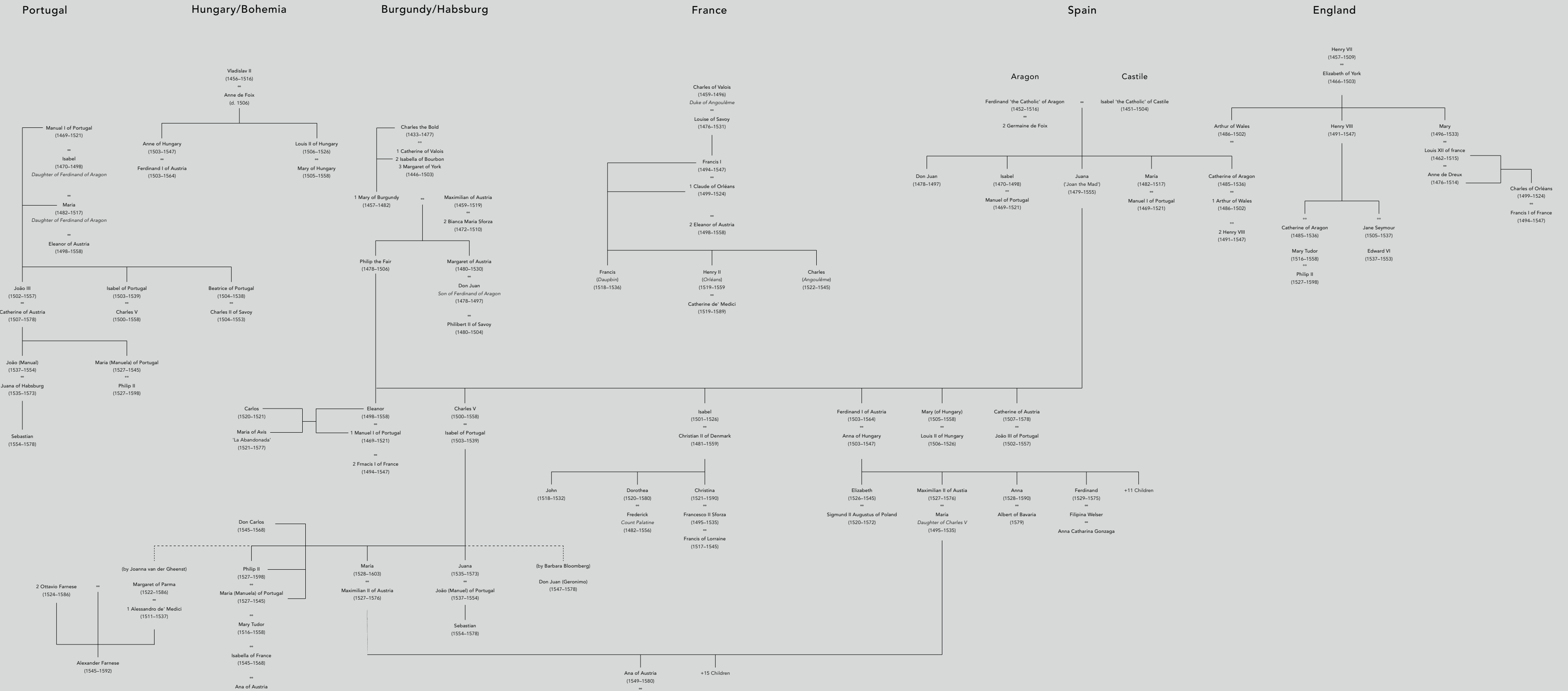
Author: Llorens Planella, Maria Teresa (Teresa Canepa)

Title: Silk, porcelain and lacquer : China and Japan and their trade with Western Europe and the New World, 1500-1644. A survey of documentary and material evidence

Issue Date: 2015-11-25

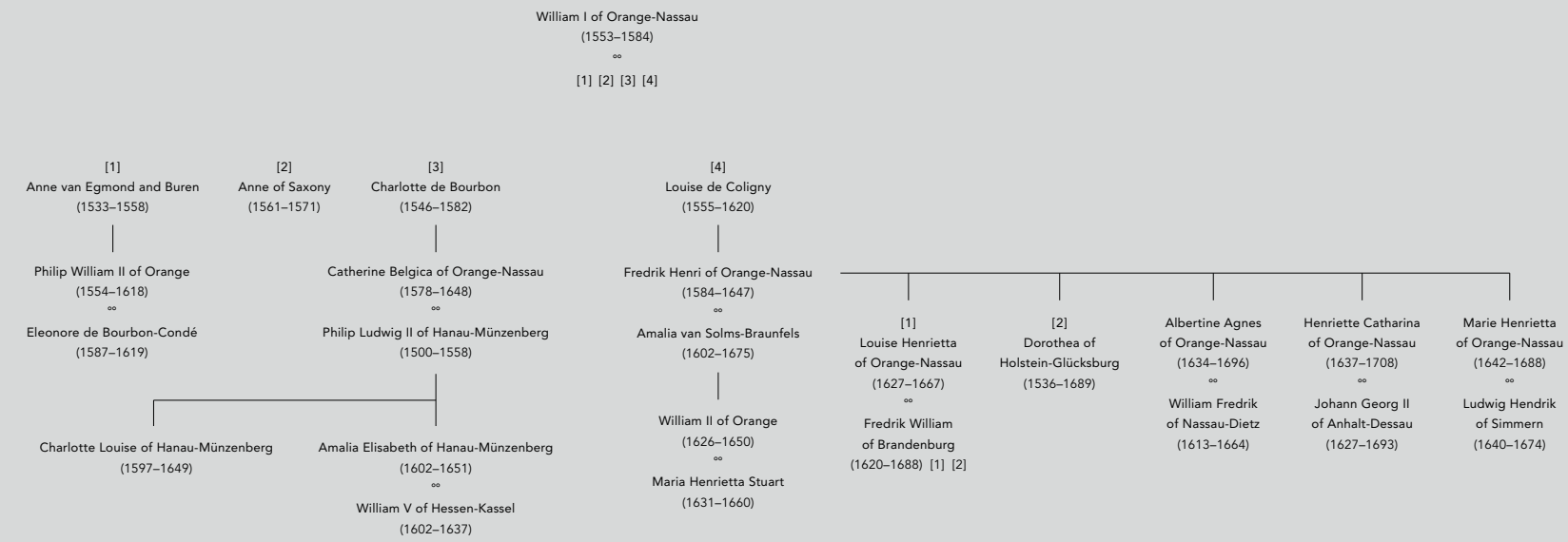
Houses of Avis-Beja – Habsburg genealogy

[Appendix 1]



House of Orange genealogy

[Appendix 1]



Map of late Ming kilns in China producing porcelain for the European market

[Appendix 2]



Chinese and European shipwrecks with late Ming porcelain

[Appendix 3]

Chinese

Date of shipwreck	Ship name/designation	Size/type of ship	Port of departure/destination	Site of shipwreck	Porcelain cargo
Early sixteenth century	<i>San Isidro</i>	Chinese junk		Off the coast of Zambales, Luzon island, the Philippines	Mostly Zhangzhou blue-and-white porcelain
c.1573–1620	<i>Nan'ao No. 1</i>	Chinese junk		Off Yun'ao Town, Nan'ao County, Shantou City, Guangdong province	Over 10,000 pieces of porcelain. Mostly Zhangzhou blue-and-white porcelain, and a small amount of Jingdezhen blue-and-white porcelain, all probably dating to the Wanli reign
Late sixteenth/ early seventeenth century	<i>Wreck 2 of the Royal Captain Shoal</i>	Chinese junk		Off the island of Palawan	Mostly Zhangzhou blue-and-white porcelain
1600	<i>Beijiao No. 3</i>	Chinese junk		Off Xisha or Paracel islands, South China Sea, between Vietnam, South China and the Philippines	Mostly Zhangzhou blue-and-white porcelain
c.1608	<i>Binh Thuan</i>	Chinese junk		East of Phan Thiet, Binh Thuan Province, southern Vietnam	Mostly Zhangzhou blue-and-white porcelain, and Zhangzhou porcelain decorated with overglaze enamels
c.1643	<i>Hatcher junk</i>	Chinese junk		South China Sea	25,000 pieces of intact porcelain were recovered from the site, including 2,600 pieces of Kraak porcelain. The wreck site also yielded a large number of porcelains decorated in the so-called Transitional style, approximately 845 <i>Blanc de chine</i> pieces, 396 celadon porcelains and a smaller amount of Zhangzhou porcelain and monochrome wares

Portuguese

Date of shipwreck	Ship name/designation	Size/type of ship	Port of departure/destination	Site of shipwreck	Porcelain cargo
1552	<i>São João</i>	900-ton <i>Carreira da Índia</i> nau	Cochin/ Lisbon	North of Umtamvuna (present-day Port-Edward), Southern Natal, Eastern Cape	Jingdezhen ordinary trade blue-and-white porcelain, and one shard bearing a Jiajing reign mark (1522–1566). Some coarser blue-and-white porcelain made at private kilns of Jingdezhen or southern China
1554	<i>São Bento</i>	900-ton <i>Carreira da Índia</i> nau	Cochin/Lisbon	Msikaba, Eastern Cape	Jingdezhen ordinary trade blue-and-white porcelain, and one shard bearing a Jiajing reign mark (1522–1566). Some coarser blue-and-white porcelain made at private kilns of Jingdezhen or southern China
1558	<i>Espadarte</i>	900-ton <i>Carreira da Índia</i> nau	En route to Lisbon	Island of Mozambique	Jingdezhen ordinary trade blue-and-white porcelain, one shard bearing a Jiajing reign mark (1522-1566). Jingdezhen white-glazed porcelain, and porcelain with traces of overglaze enamels
1593	<i>Santo Alberto</i>	<i>Carreira da Índia</i> nau	Cochin/Lisbon	Sunrise-on-Sea, off the eastern coast of South Africa	Kraak and other Jingdezhen ordinary trade blue-and-white porcelain
1606	<i>Nossa Senhora dos Mártires</i>	<i>Carreira da Índia</i> nau	Cochin/Lisbon	Fortress of São Julião da Barra in the mouth of the Tagus River, near Lisbon	Kraak and other Jingdezhen ordinary trade blue-and-white porcelain
1608	<i>Santo Espiritu</i>	<i>Carreira da Índia</i> nau		South Africa	Jingdezhen ordinary trade blue-and-white porcelain
1608	<i>IDM-003</i> , most probably the <i>Nossa Senhora da Consolação</i>	<i>Carreira da Índia</i> nau		Cabeceira reef, off the Island of Mozambique	Kraak porcelain
1615	<i>Nossa Senhora da Luz</i>	<i>Carreira da Índia</i> nau	Goa/Lisbon	Porto Pim, Faial, Azores, Portugal	Kraak and other Jingdezhen blue-and-white porcelain
1622	<i>São João Baptista</i>	Large <i>Carreira da Índia</i> nau	Goa/Lisbon	Kenton-on-sea, Eastern Cape, South Africa	Kraak and other Jingdezhen blue-and-white porcelain

c.1625 (c.1630–1635?)	<i>Wanli shipwreck</i>	About 80-ton, probably a <i>shalupa</i> , a <i>naveta</i> or an <i>urca</i>		East coast of Malaysia	37,000 pieces of porcelain, 80 per cent recovered as shards. Largest assemblage of Kraak porcelain found to date; also Jingdezhen blue-and-white porcelain decorated in the so-called Transitional style; and Zhangzhou blue-and-white porcelain
1630	<i>São Gonçalo</i>	Small nau, <i>Companhia da Índia</i> (Indian Company)	Goa/Lisbon	Plettenburg Bay, South Africa	Kraak porcelain, and Zhangzhou blue-and-white porcelain
1643	<i>Santa Maria Madre de Deus</i>	<i>Carreira da Índia</i> naveta	Goa/Lisbon	South Africa	Kraak and other Jingdezhen blue-and-white porcelain
1647	<i>Santíssimo Sacramento</i>	Large <i>Carreira da Índia</i> nau	Goa/Lisbon	Sardinia Bay, near Port Elizabeth, South Africa	Kraak and other Jingdezhen blue-and-white porcelain
1647	<i>Nossa Senhora da Atalaia do Pinheiro</i>	<i>Carreira da Índia</i> nau	Goa/Lisbon	Near the Cefane river, East London, South Africa	Kraak and other Jingdezhen blue-and-white porcelain

Spanish

Date of shipwreck	Ship name/designation	Size/type of ship	Port of departure/destination	Site of shipwreck	Porcelain cargo
1576	<i>San Felipe</i>	Large Manila Galleon	Manila/Acapulco	Off the coast of Baja, California	Jingdezhen ordinary trade blue-and-white porcelain, and Kraak porcelain; Jingdezhen <i>Kinrande</i> porcelain and porcelain decorated with overglaze enamels; and Zhangzhou blue-and-white porcelain
1588	<i>The Trinidad Valencera</i>	Large Venetian merchant ship requisitioned for the Spanish Armada		Kinnagoe Bay, County Donegal, Northern Ireland	Jingdezhen ordinary trade blue-and-white porcelain

1595	<i>San Agustín</i>	200-ton Manila Galleon	Manila/Acapulco	Northern California, north of San Francisco in Drake's Bay	Kraak and other Jingdezhen ordinary trade blue-and-white porcelain; and Zhangzhou blue-and-white porcelain
1595	<i>San Pedro</i>	Treasure Fleet	Cartagena/Cadiz	Off the Island of Bermuda	Kraak and other Jingdezhen ordinary trade blue-and-white porcelain
1600	<i>San Diego</i>	300-ton Manila Galleon	Manila/Acapulco	Manila Bay, northeast of Fortune Island, Nasgbu, Btangas Province	34,000 artifacts recovered. Mostly Kraak and other Jingdezhen ordinary trade blue-and-white porcelain and <i>wucaí</i> (five colour) porcelain; and Zhangzhou blue-and-white porcelain
1601	<i>Santa Margarita</i>	Manila Galleon	Manila/Acapulco	Off Island of Rota, Northern Mariana Islands	Mostly Kraak and other Jingdezhen ordinary trade blue-and-white porcelain
Early seventeenth century	<i>Angra D</i>	About 400–500-ton ship, believed to be Spanish		Angra do Heroísmo Bay, Terceira, Azores,	Jingdezhen ordinary trade blue-and-white porcelain
1621	<i>San Antonio</i>	300-ton Portuguese merchant ship sailing with the Treasure Fleet	Cartagena/Cadiz	West reefs of Bermuda Island	Jingdezhen ordinary trade blue-and-white porcelain, and shards of a blue-and-white jar bearing a Wanli reign mark (1573–1620)
1622	<i>Santa Margarita</i>	Galleon, Tierra Firme Fleet	Havana/Seville	Florida Keys, west of the Island of Key West, Florida	Kraak and other Jingdezhen ordinary trade blue-and-white porcelain
1638	<i>Nuestra Señora de La Concepción</i>	2,000-ton Manila Galleon	Manila/Acapulco	Off the southern coast of Saipan, Mariana Islands	Mostly Kraak and other Jingdezhen ordinary trade blue-and-white porcelain; porcelain decorated in the so-called Transitional style; and Zhangzhou blue-and-white porcelain
1639	<i>El Galgo</i>	Patache, Tierra Firme Fleet	Havana/Seville	Off the Island of Bermuda	Jingdezhen ordinary trade blue-and-white porcelain
1641	<i>Nuestra Señora de la Limpia y Pura Concepción</i>	600-ton Galleon, New Spain Fleet	Veracruz/Seville	Silver Bank, off north coast of present-day Dominican Republic	Mostly Kraak and other Jingdezhen ordinary trade blue-and-white porcelain; Jingdezhen porcelain decorated with overglaze enamels; and Dehua <i>Blanc de chine</i> porcelain

Dutch

Date of shipwreck	Ship name/ designation	Size/type of ship	Port of departure/ destination	Site of shipwreck	Porcelain cargo
1609	<i>Mauritius</i>	VOC ship, Amsterdam Chamber	Bantam/Amsterdam	Off Cap Lopez, southern coast of the Gulf of Guinea, West Africa	<i>Kraak</i> porcelain, and other Jingdezhen ordinary trade blue-and-white porcelain; and <i>Zhangzhou</i> blue-and- white porcelain
1613	<i>Witte Leeuw</i>	VOC ship, Amsterdam Chamber		Off the island of St. Helena, South Atlantic Ocean	Mainly <i>Kraak</i> porcelain and other Jingdezhen ordinary trade blue-and- white porcelain; and a small quantity of <i>Zhangzhou</i> blue-and-white porcelain
1615	<i>Banda</i>		Bantam/Amsterdam	On a reef off the coast of the Island of Mauritius, Indian Ocean	<i>Kraak</i> porcelain and other Jingdezhen ordinary trade blue-and-white porcelain
1615	<i>Gelderland</i>		Bantam/Amsterdam		<i>Kraak</i> porcelain and other Jingdezhen ordinary trade blue-and-white porcelain; Jingdezhen white-glazed porcelain with semi-pierced decoration (<i>linglong</i>)
1615	<i>Geünieërde Provincieën</i>		Bantam/Amsterdam	Off the beach of Albion, coast of Mauritius	Jingdezhen ordinary trade blue-and-white porcelain; Jingdezhen white-glazed porcelain with semi-pierced decoration; and a small quantity of <i>Zhangzhou</i> blue- and-white porcelain

English

Date of shipwreck	Ship name/ designation	Size/type of ship	Port of departure/ destination	Site of shipwreck	Porcelain cargo
1609	<i>Sea Venture</i>	About 300-tons, flagship of a flotilla of six ships and two pinnaces	Plymouth/ Jamestown	Off the Island of Bermuda	Jingdezhen ordinary trade blue-and-white porcelain
1619	<i>Warwick</i>	VC ship	Plymouth/ Jamestown	Castle Harbour, Island of Bermuda	Jingdezhen ordinary trade blue-and-white porcelain