



Universiteit
Leiden
The Netherlands

Tonal bilingualism: the case of two related Chinese dialects

Wu, J.

Citation

Wu, J. (2015, July 2). *Tonal bilingualism: the case of two related Chinese dialects*. LOT dissertation series. LOT, Utrecht. Retrieved from <https://hdl.handle.net/1887/33727>

Version: Corrected Publisher's Version

License: [Licence agreement concerning inclusion of doctoral thesis in the Institutional Repository of the University of Leiden](#)

Downloaded from: <https://hdl.handle.net/1887/33727>

Note: To cite this publication please use the final published version (if applicable).

Cover Page



Universiteit Leiden



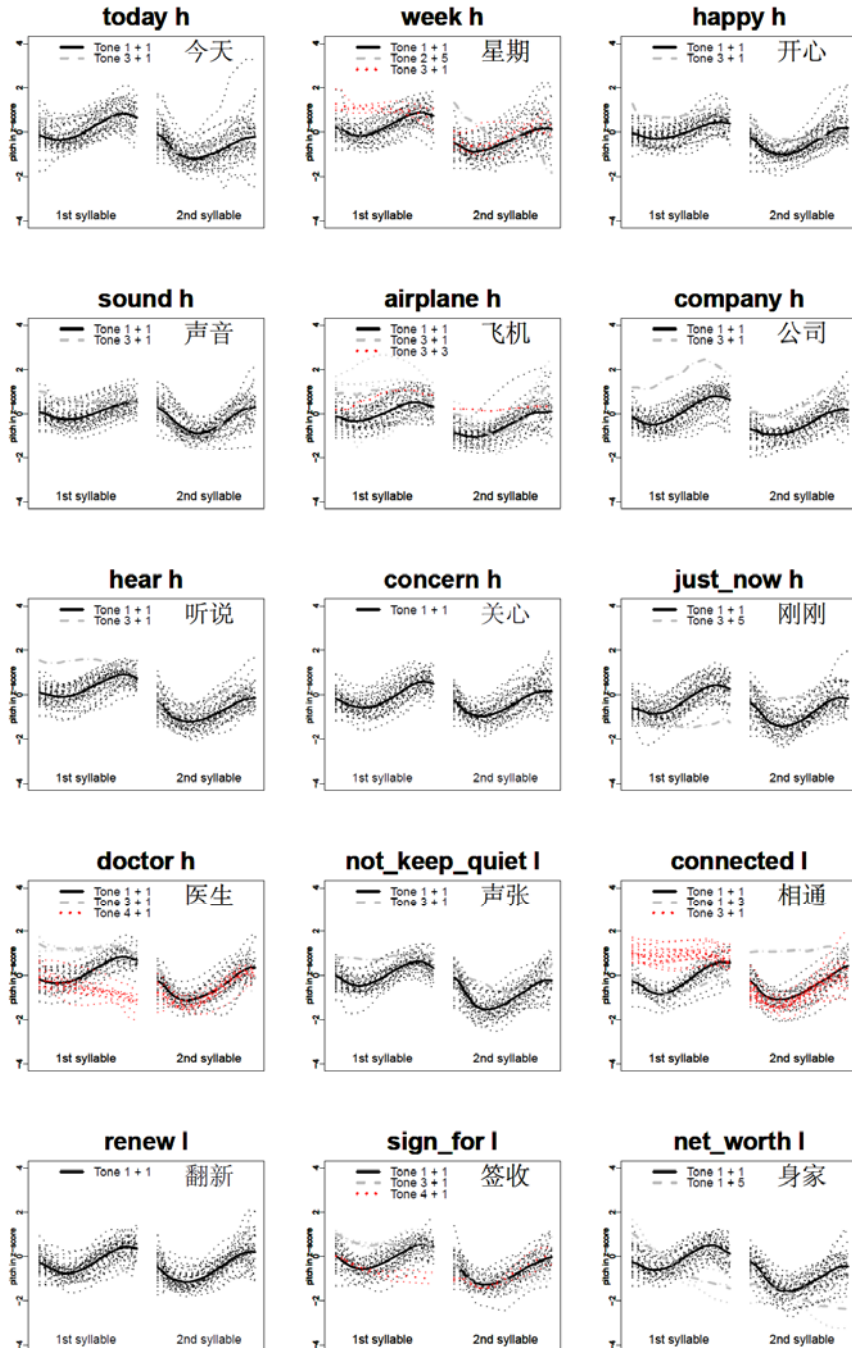
The handle <http://hdl.handle.net/1887/33727> holds various files of this Leiden University dissertation.

Author: Wu, Junru

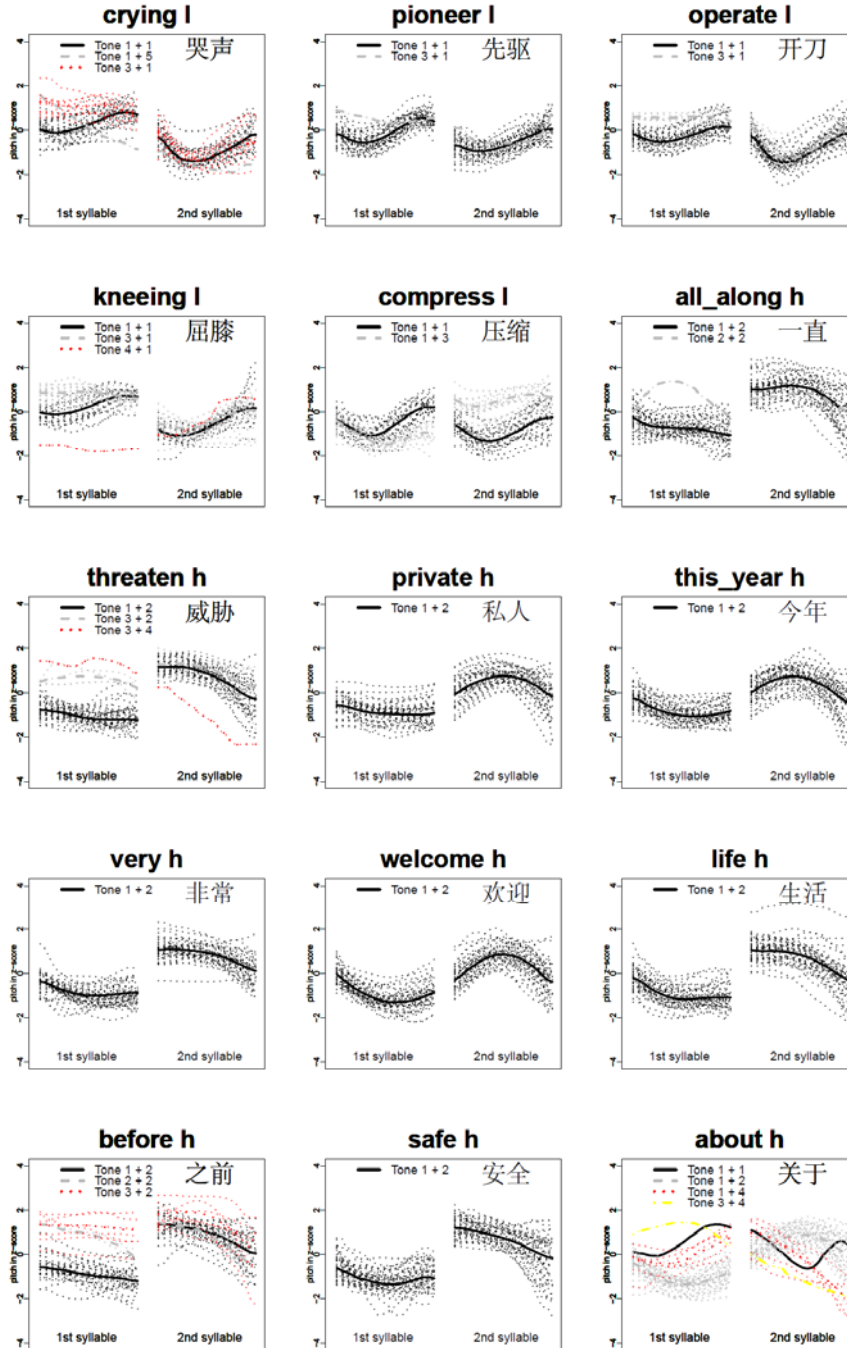
Title: Tonal bilingualism : the case of two closely related Chinese dialects

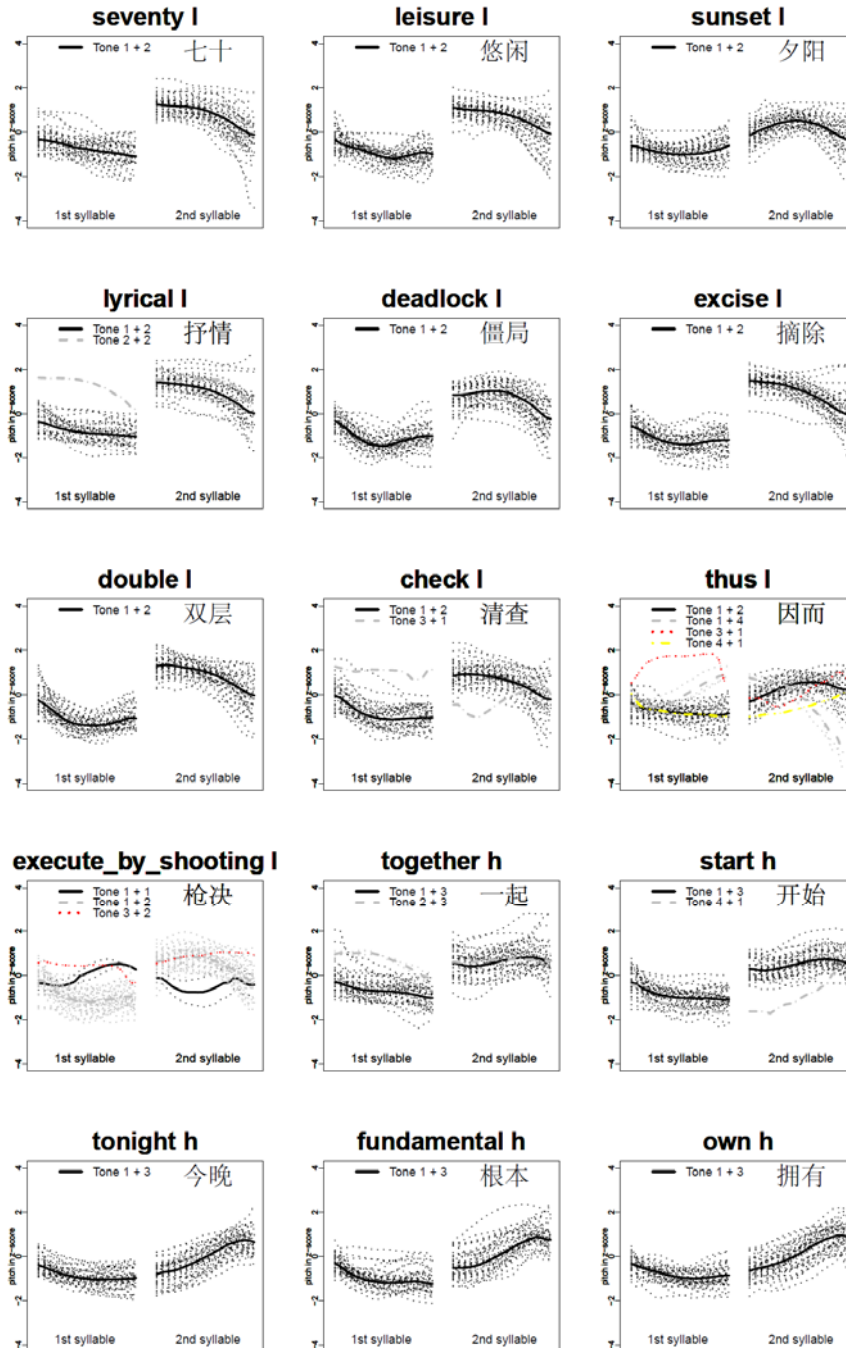
Issue Date: 2015-07-02

Appendices. Word-Wise Contour Plots

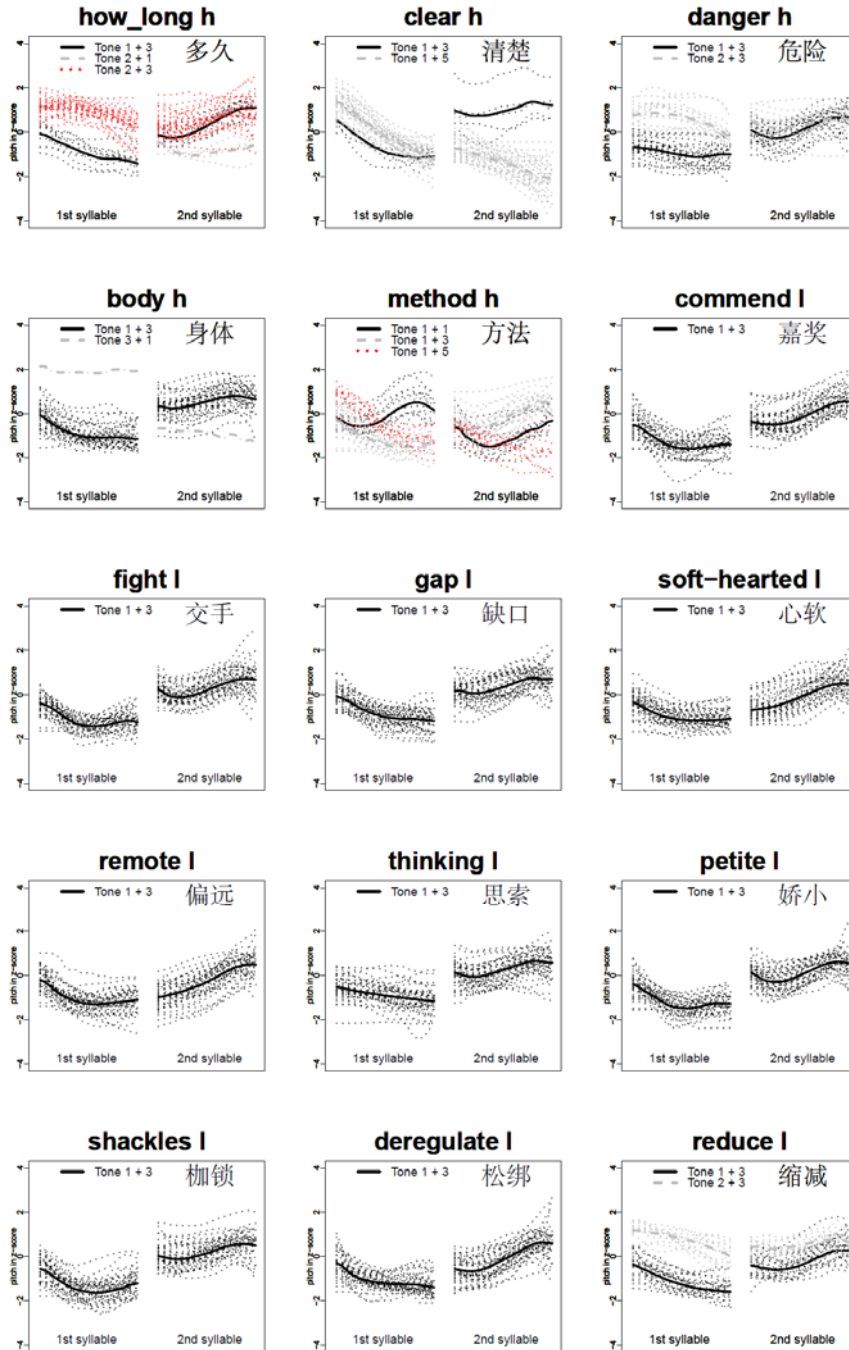


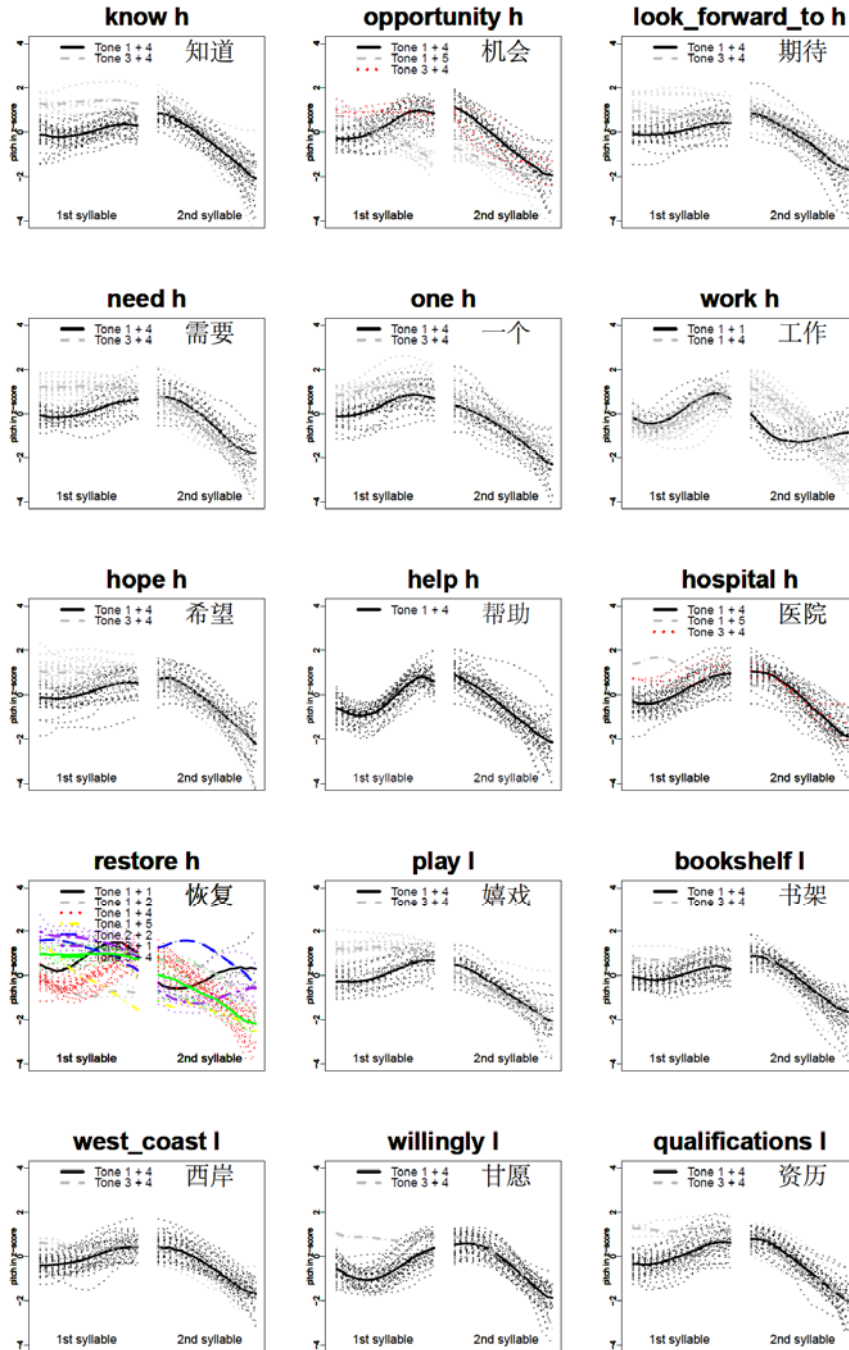
200 Tonal Bilingualism: the Case of Two Closely Related Chinese Dialects



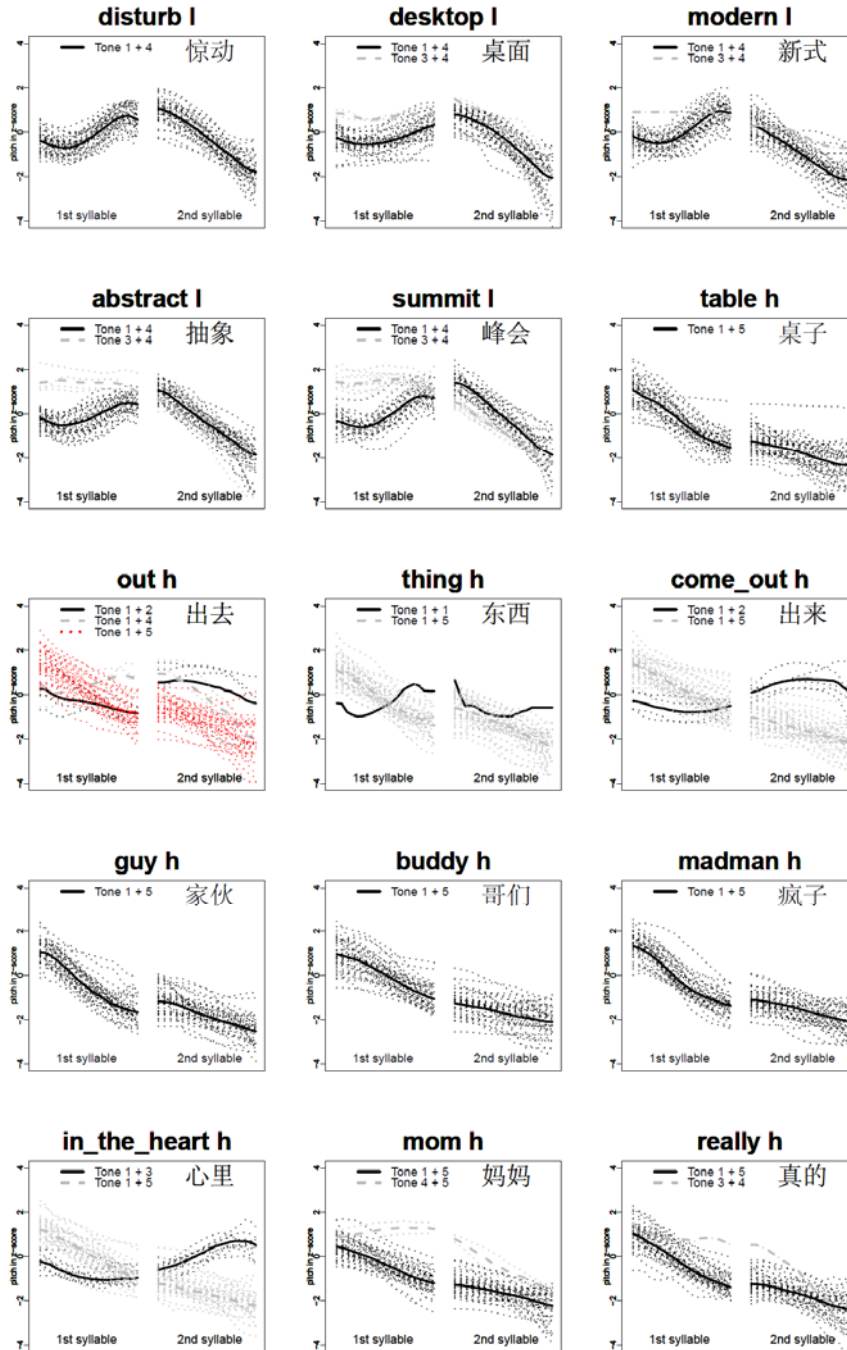


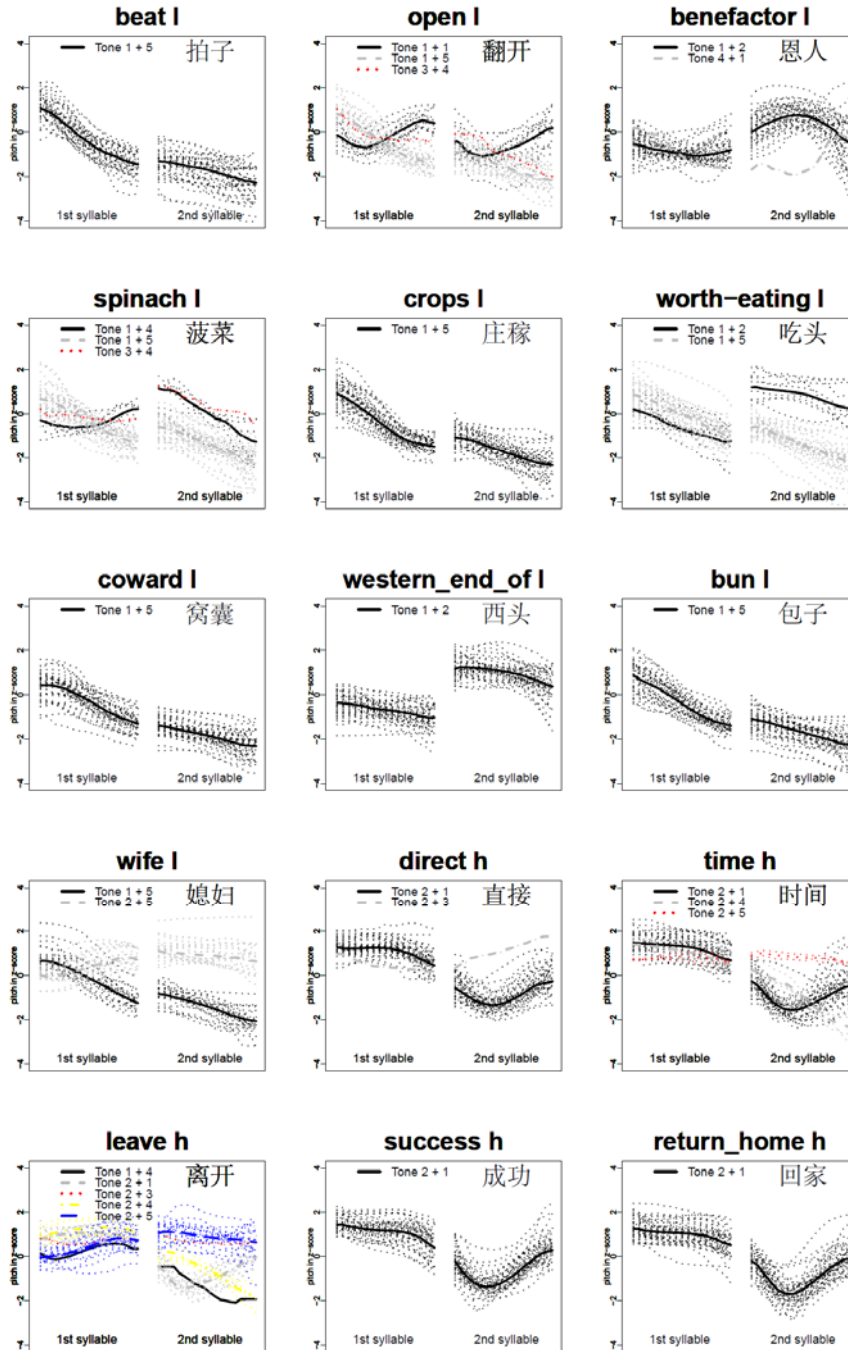
202 Tonal Bilingualism: the Case of Two Closely Related Chinese Dialects



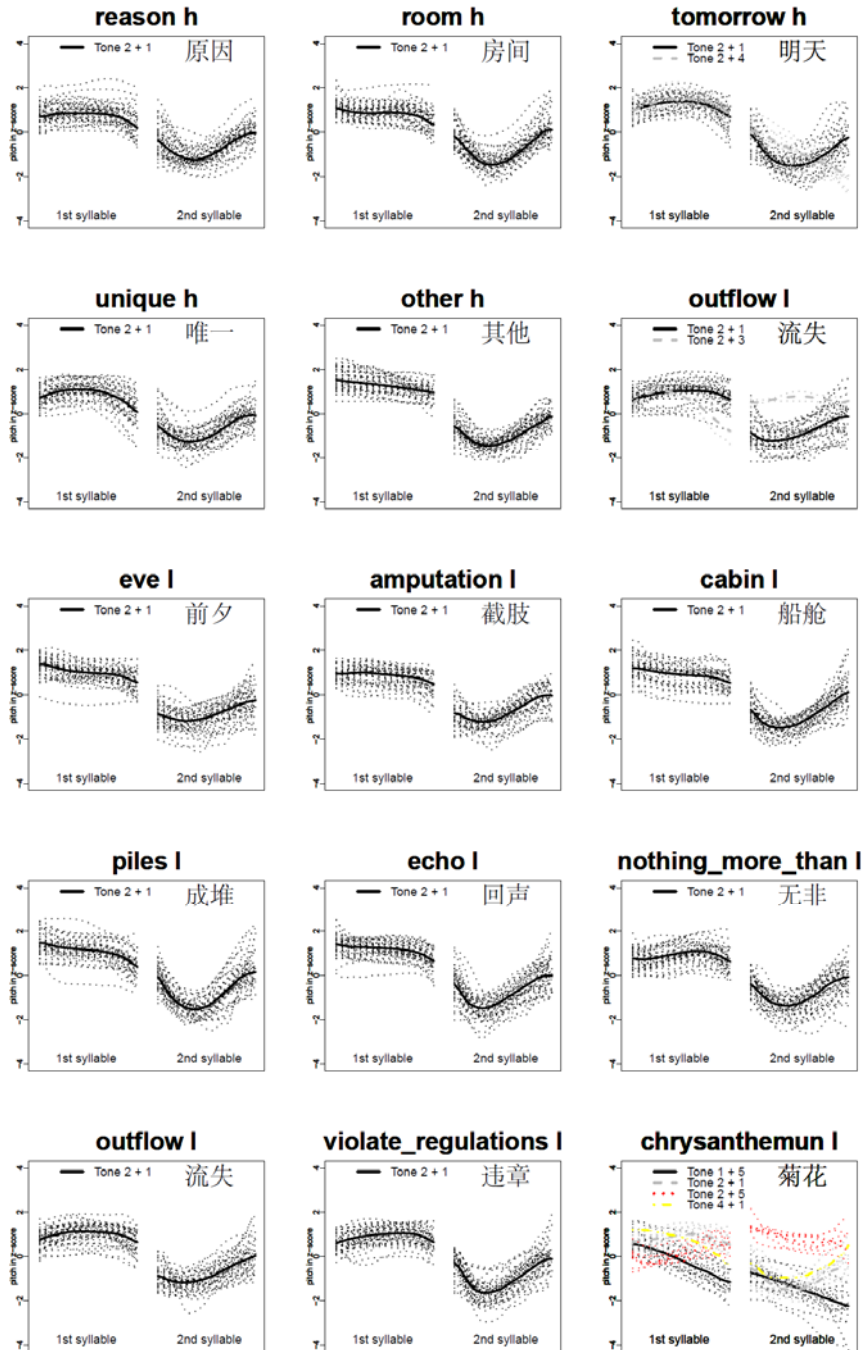


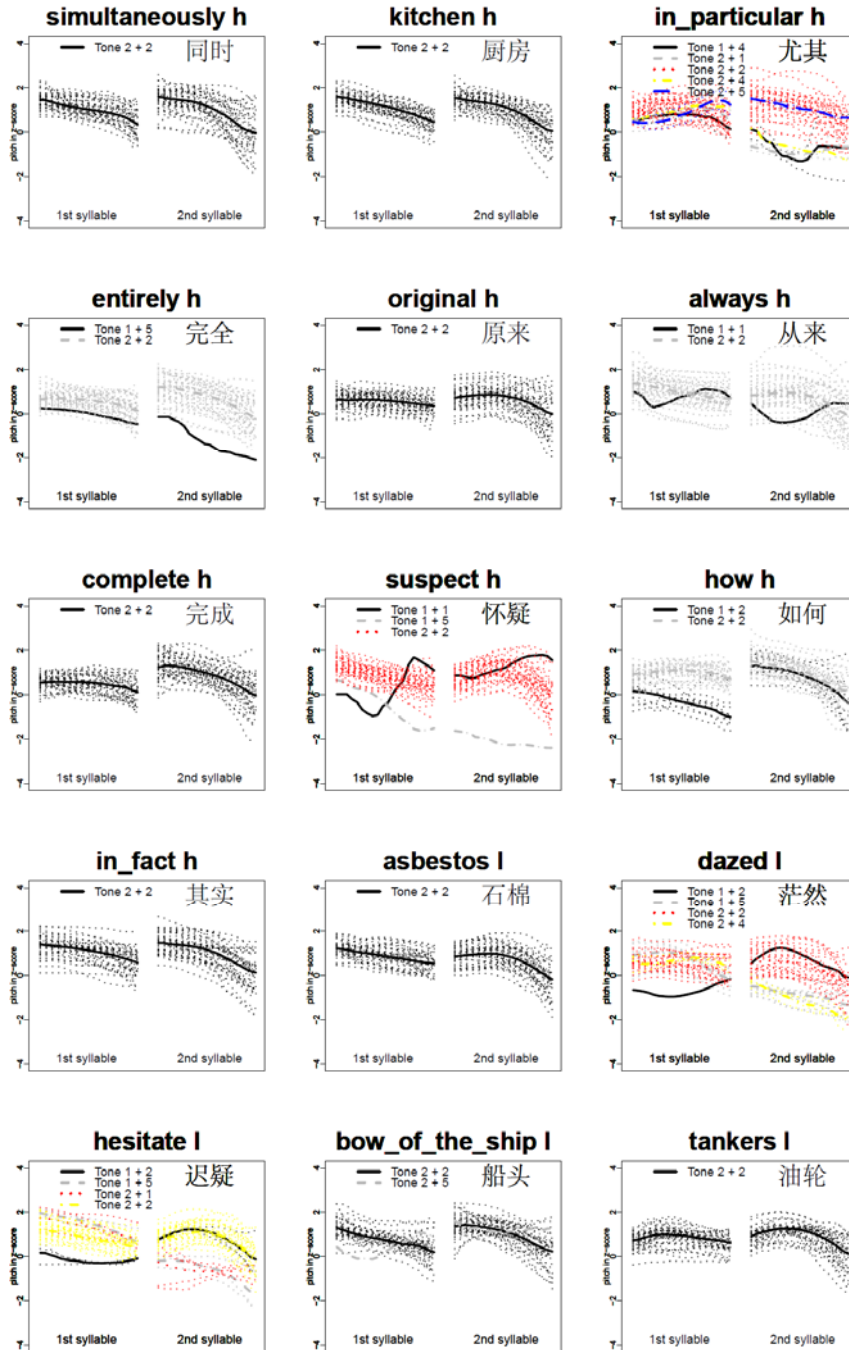
204 Tonal Bilingualism: the Case of Two Closely Related Chinese Dialects



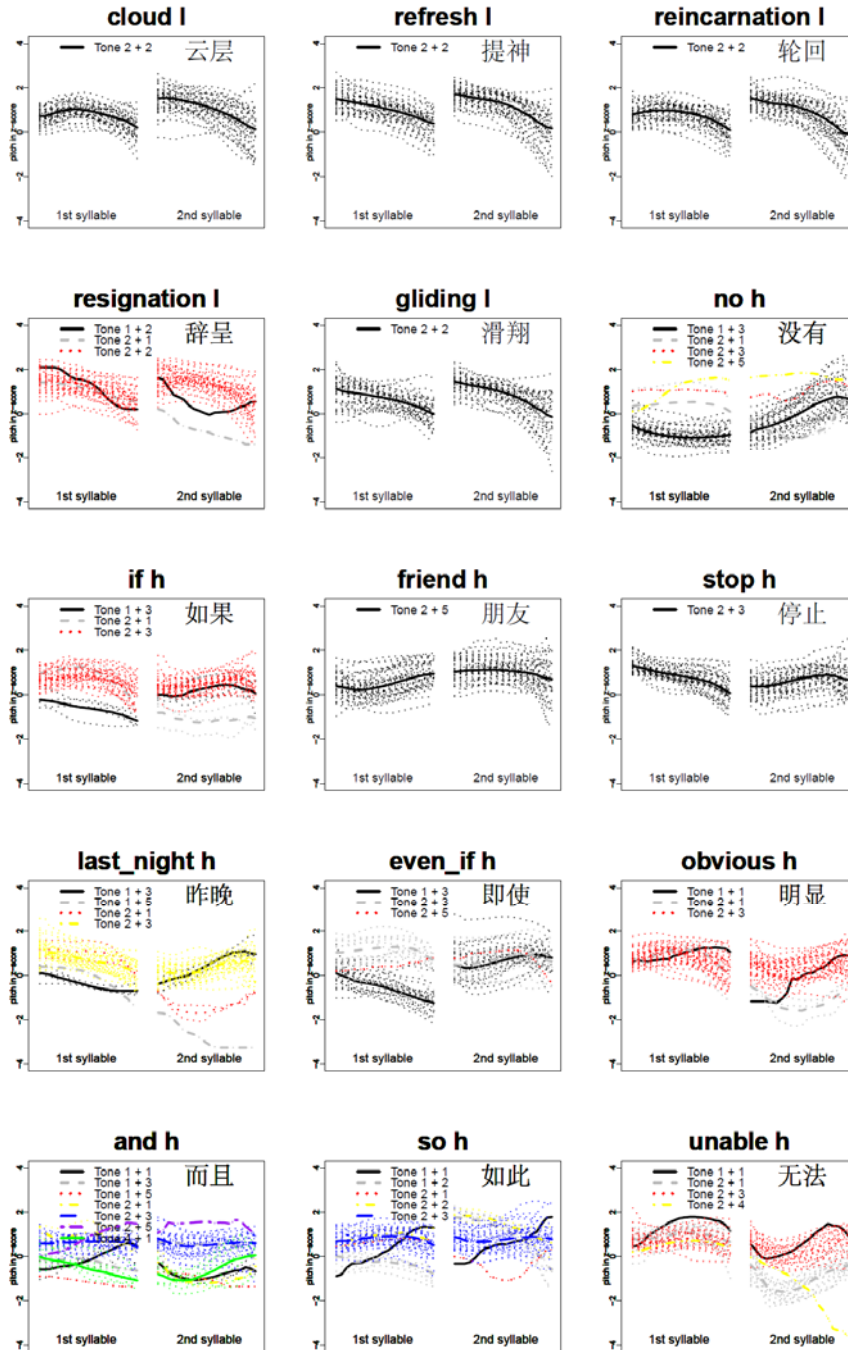


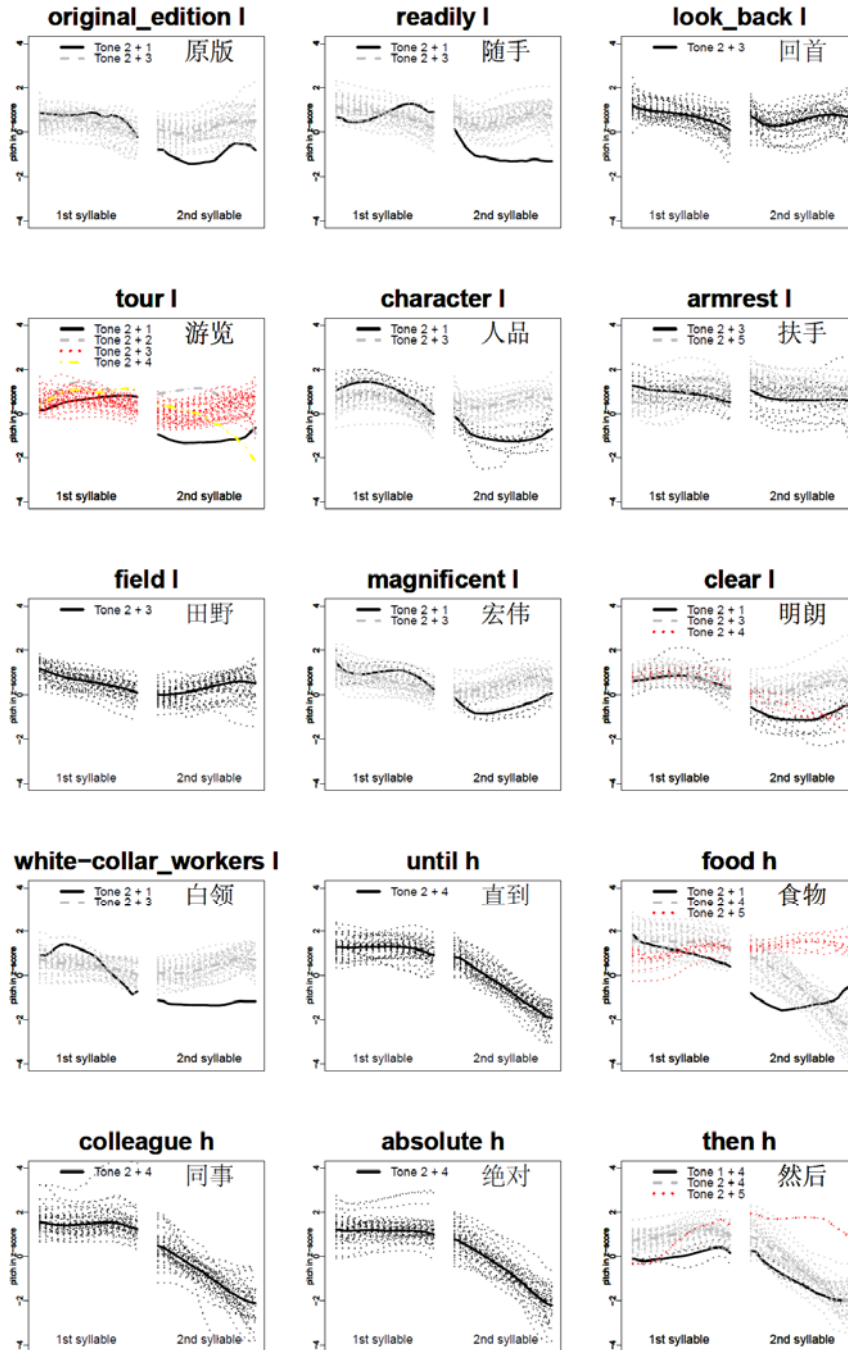
206 Tonal Bilingualism: the Case of Two Closely Related Chinese Dialects



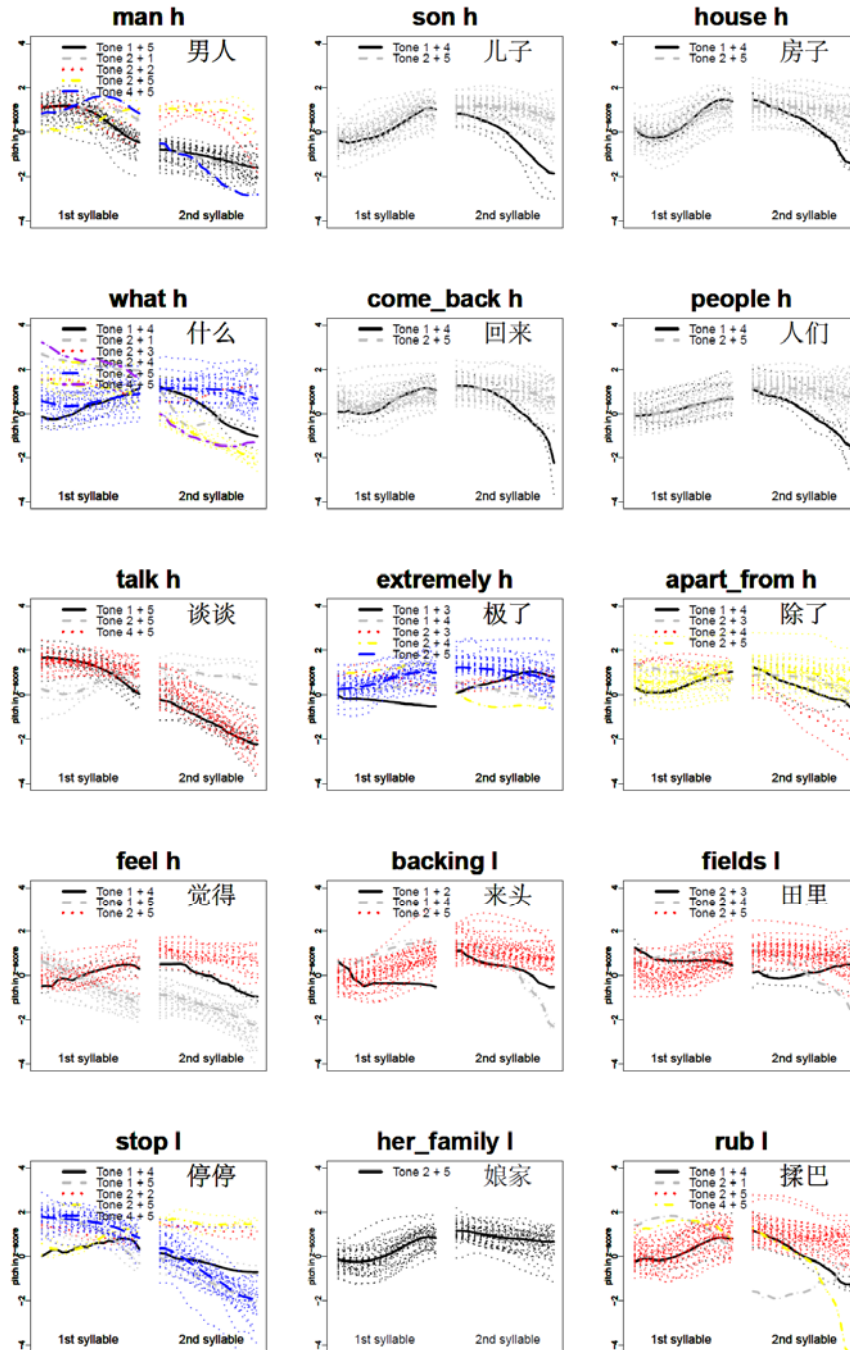


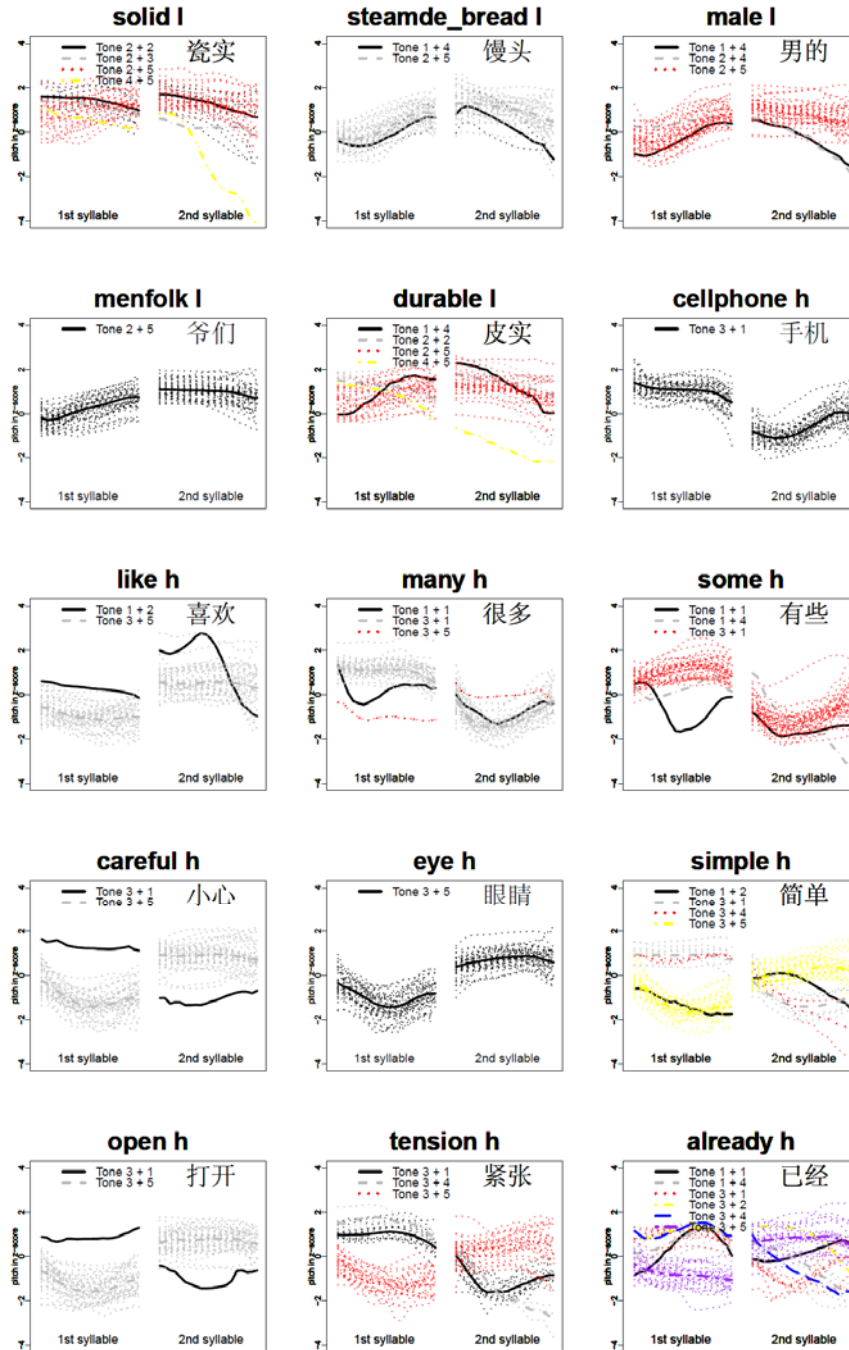
208 Tonal Bilingualism: the Case of Two Closely Related Chinese Dialects



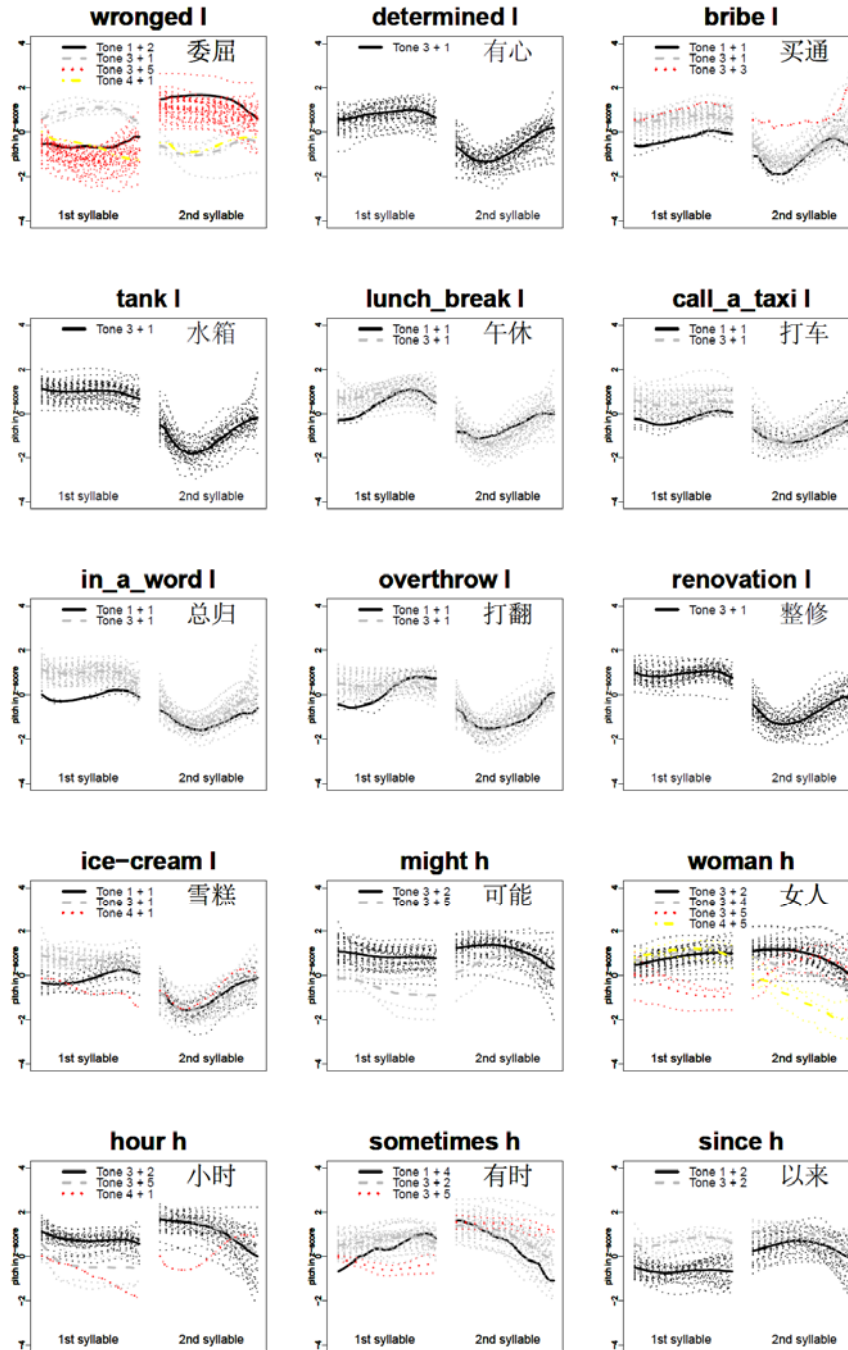


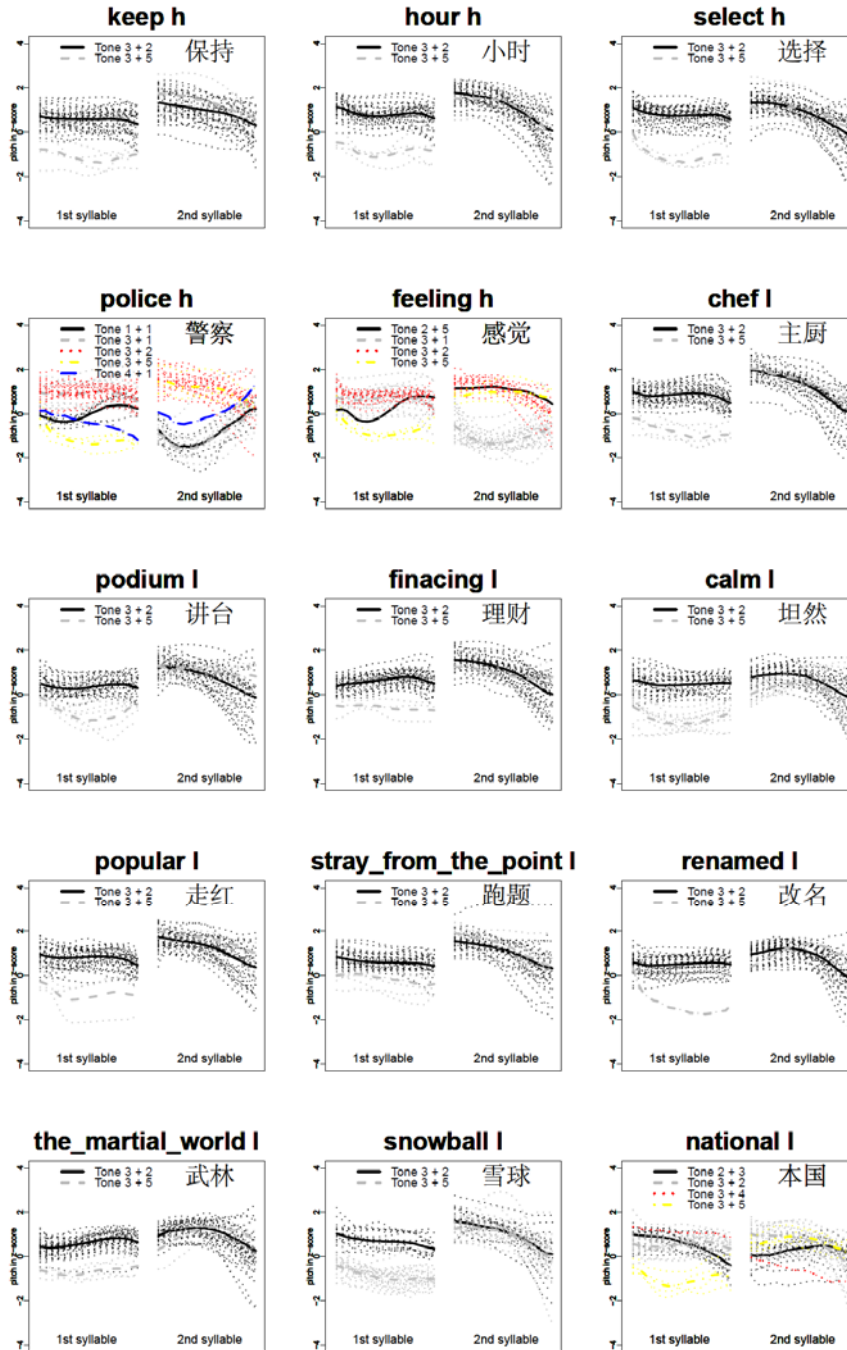
210 Tonal Bilingualism: the Case of Two Closely Related Chinese Dialects



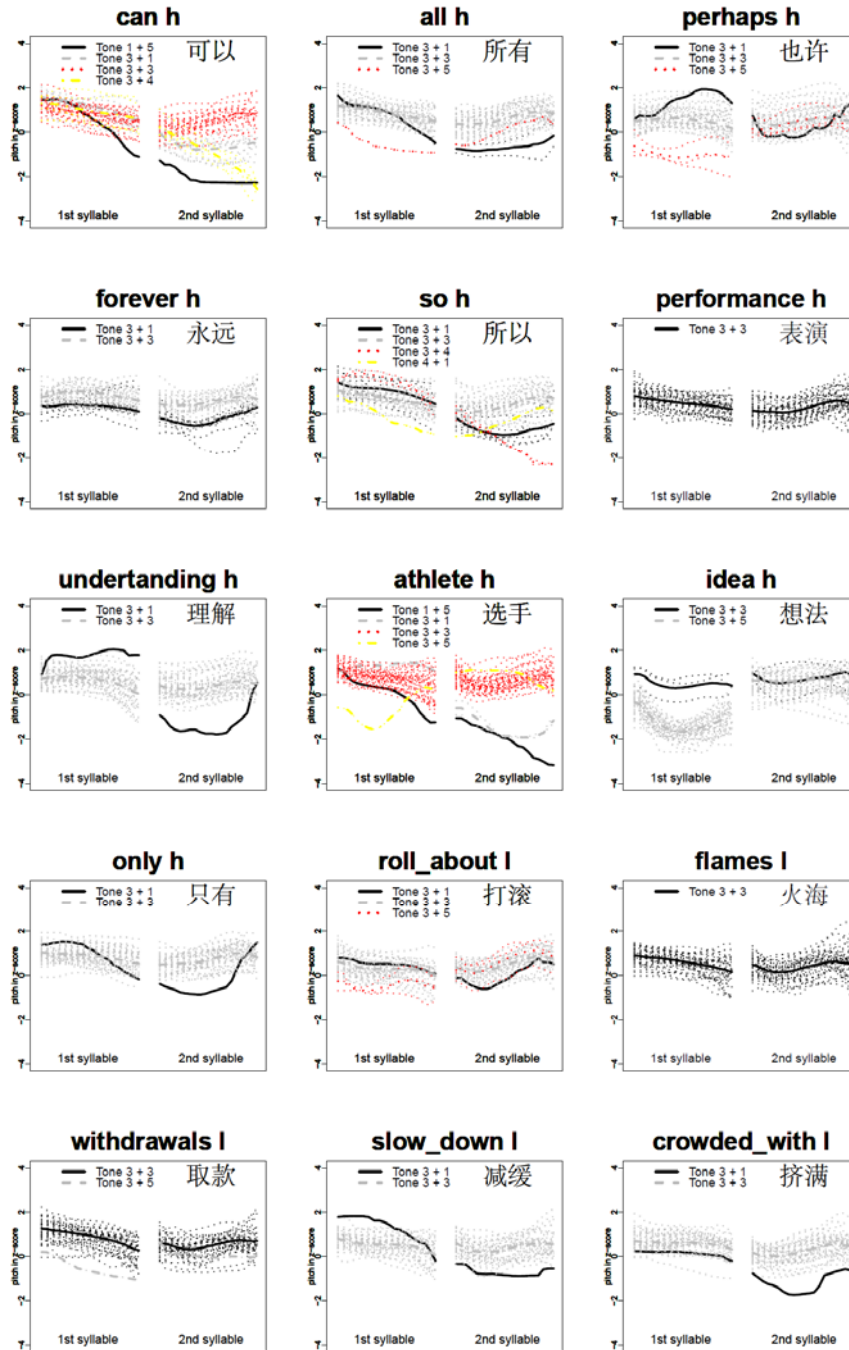


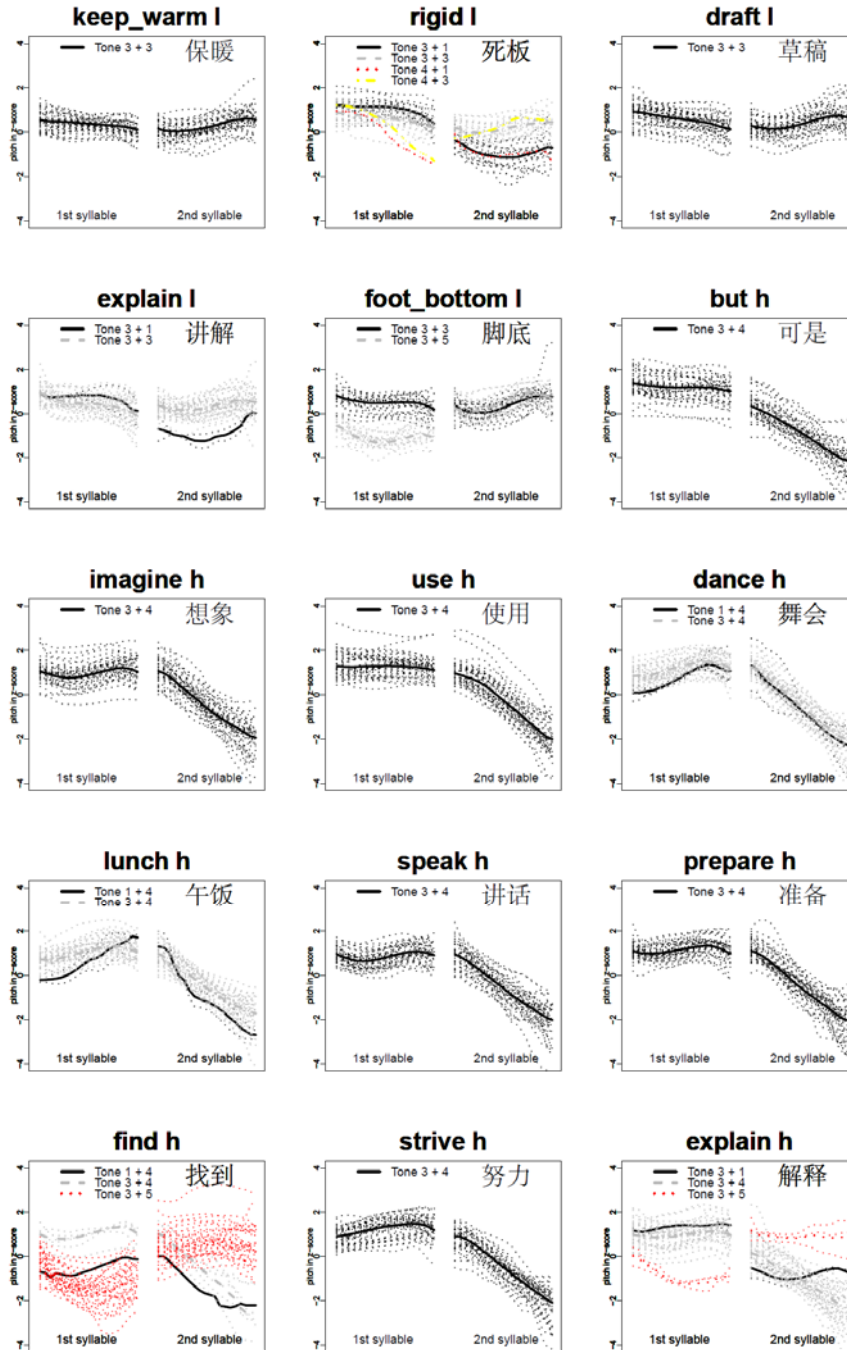
212 Tonal Bilingualism: the Case of Two Closely Related Chinese Dialects



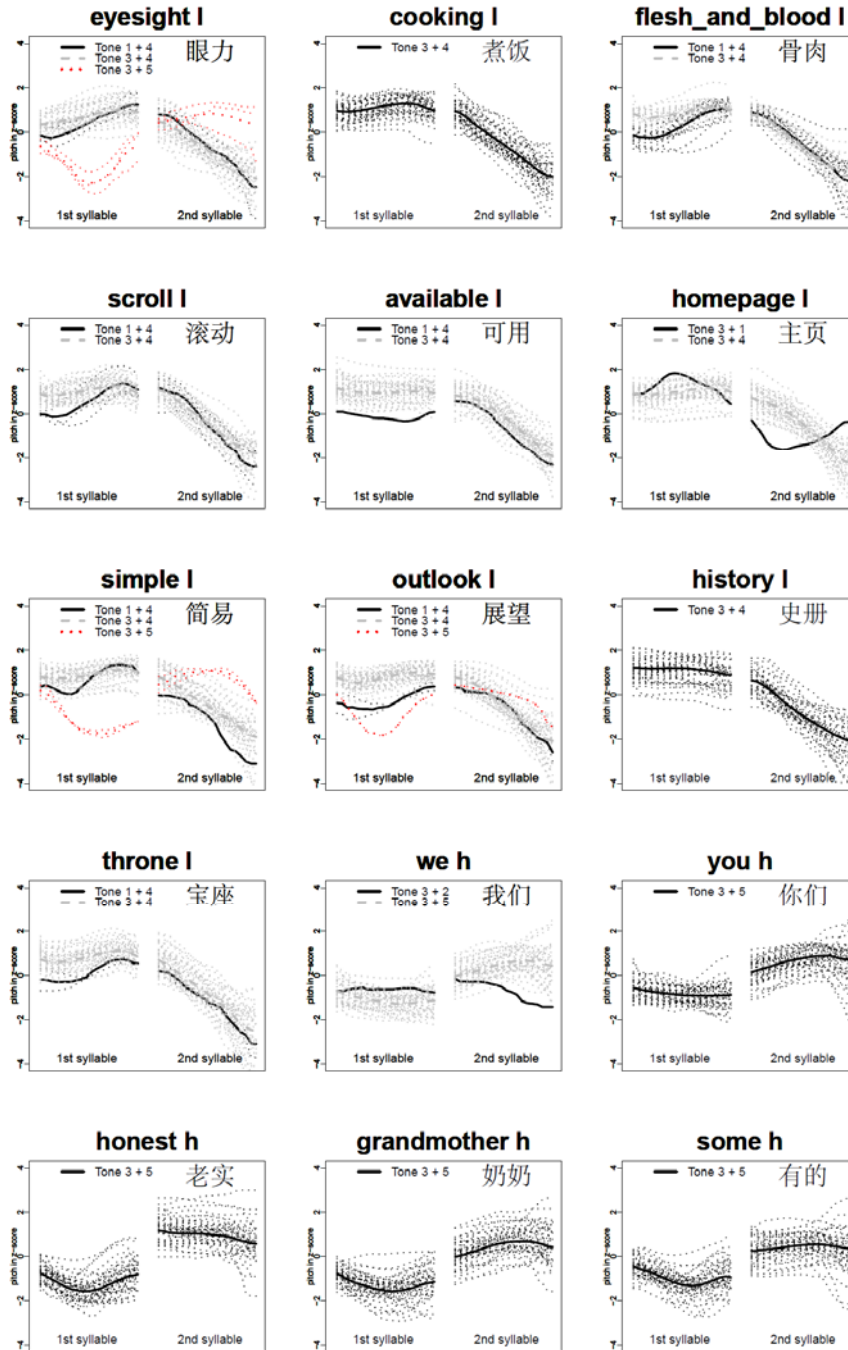


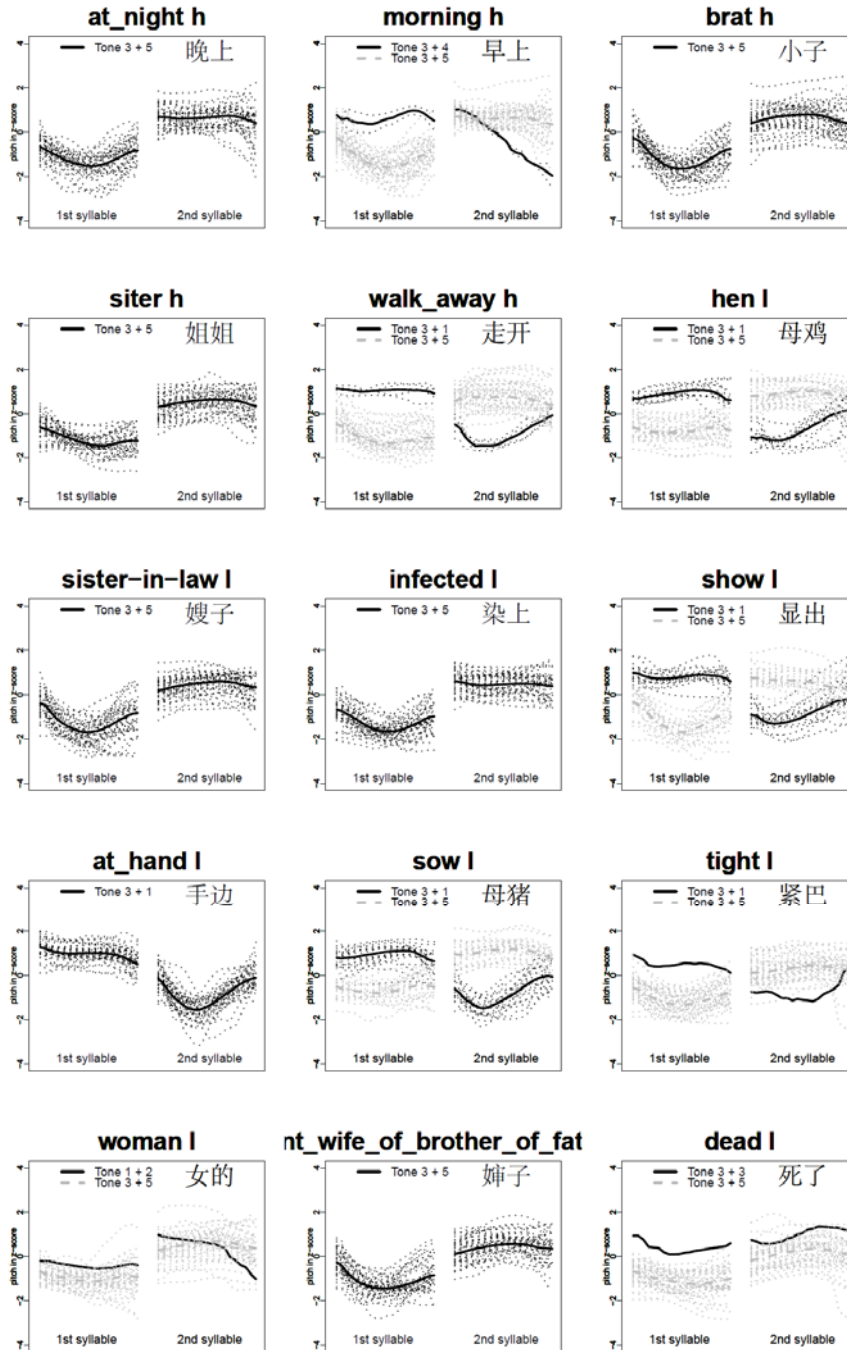
214 Tonal Bilingualism: the Case of Two Closely Related Chinese Dialects



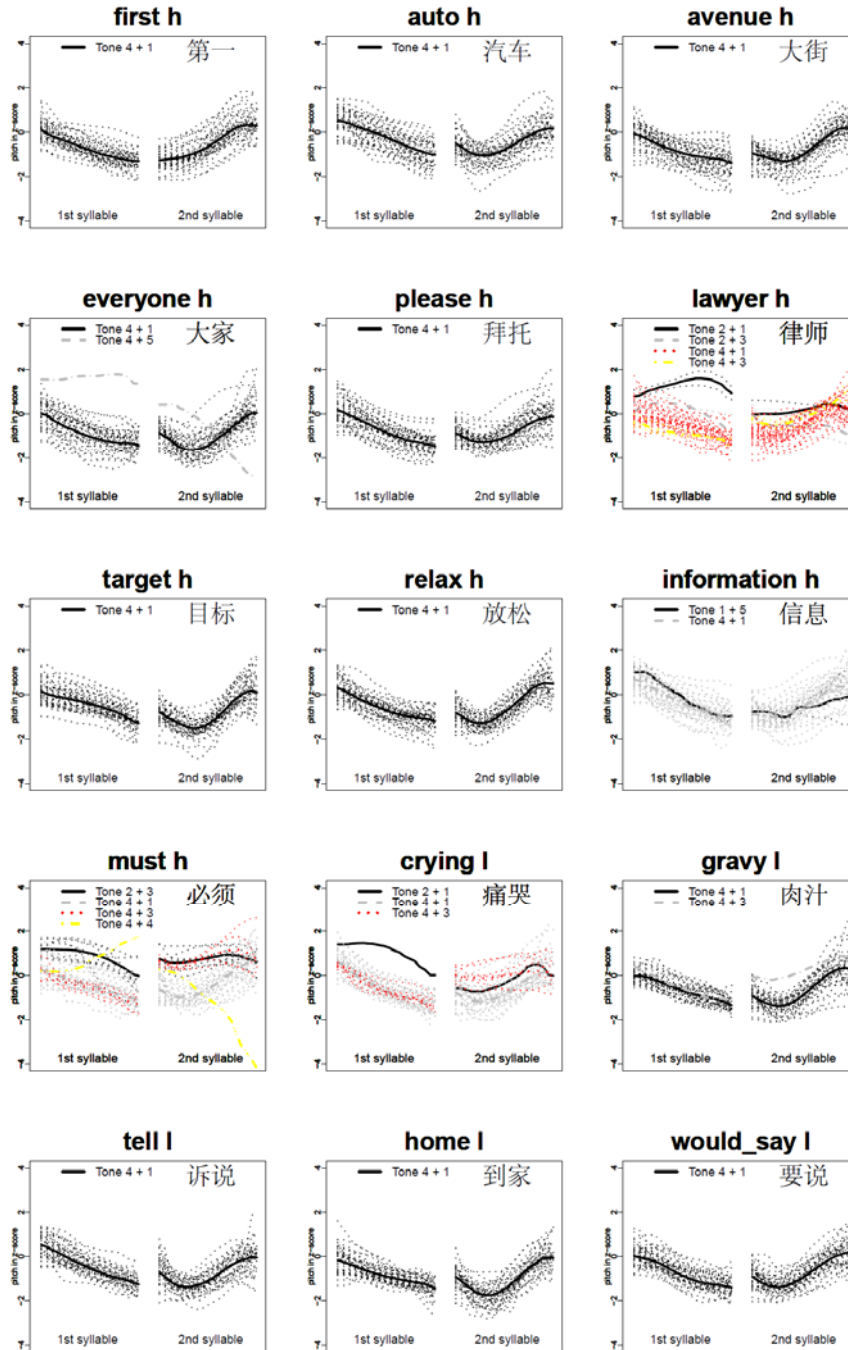


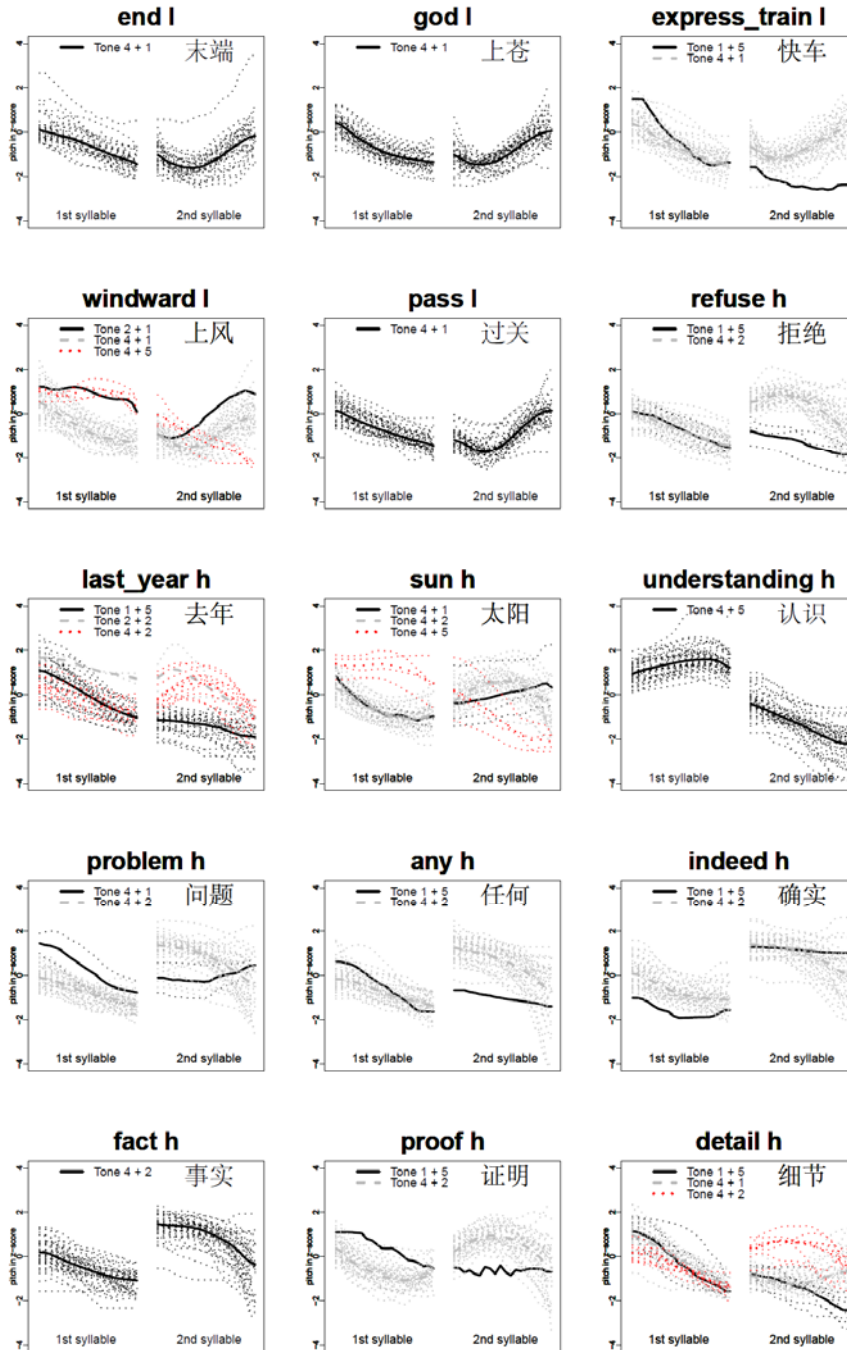
216 Tonal Bilingualism: the Case of Two Closely Related Chinese Dialects



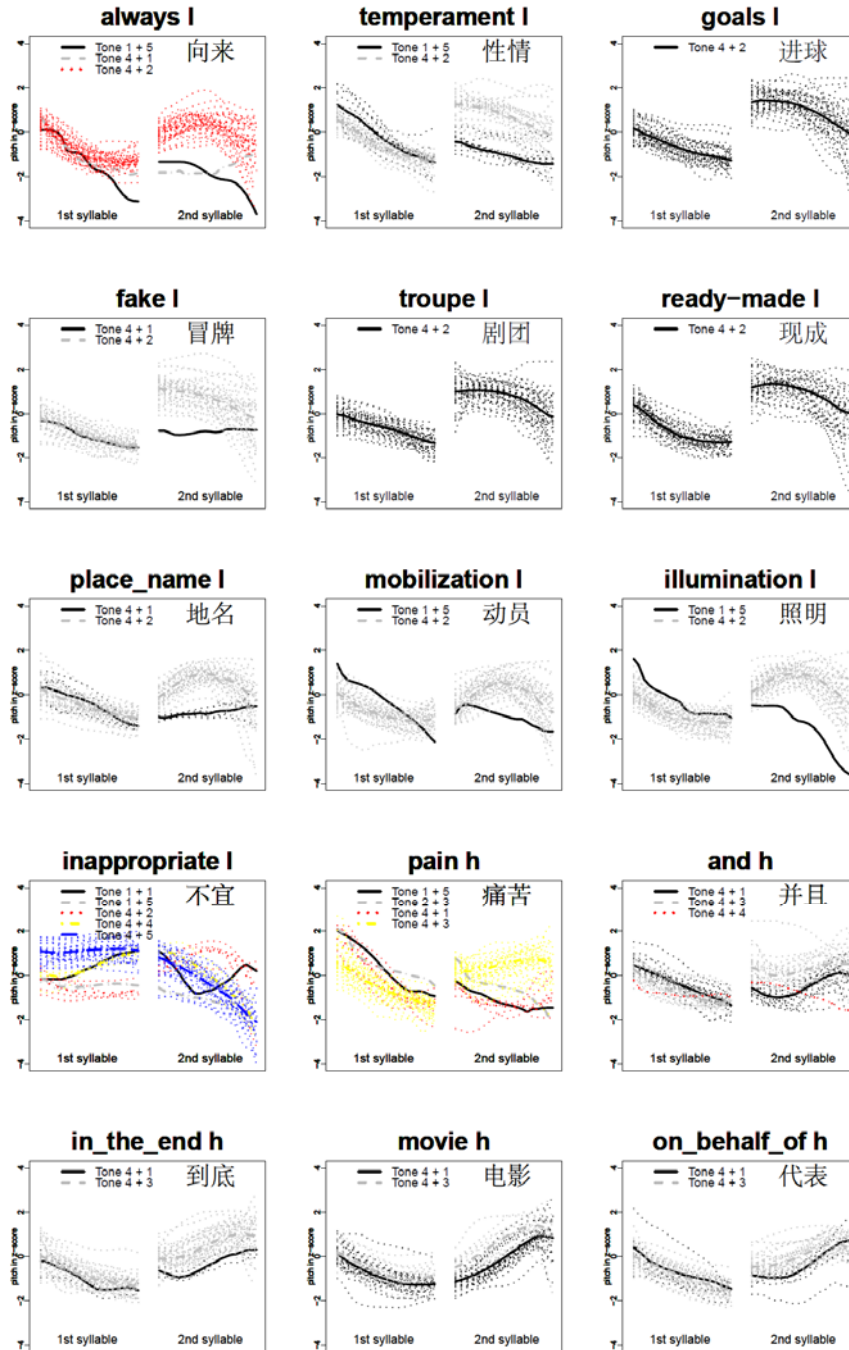


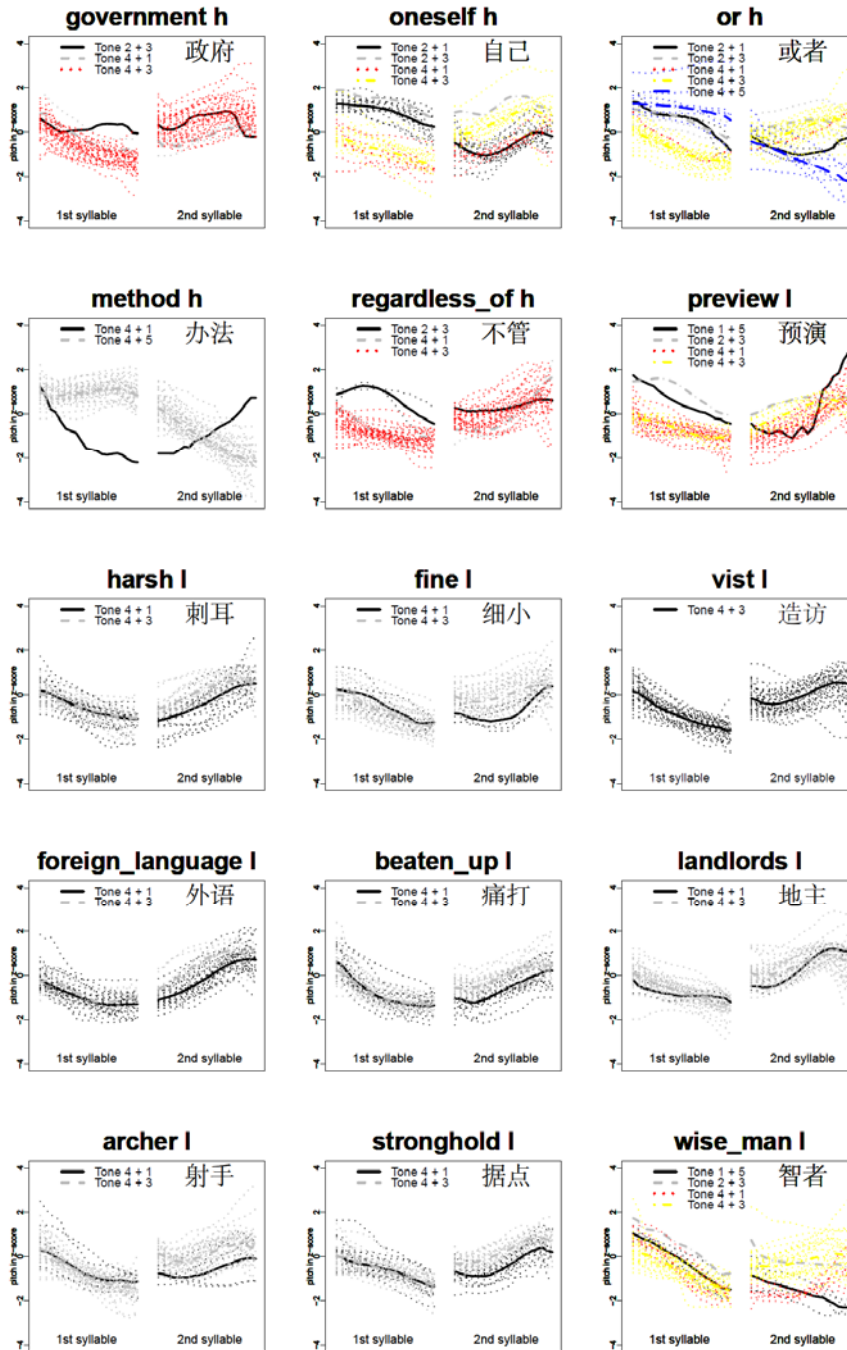
218 Tonal Bilingualism: the Case of Two Closely Related Chinese Dialects



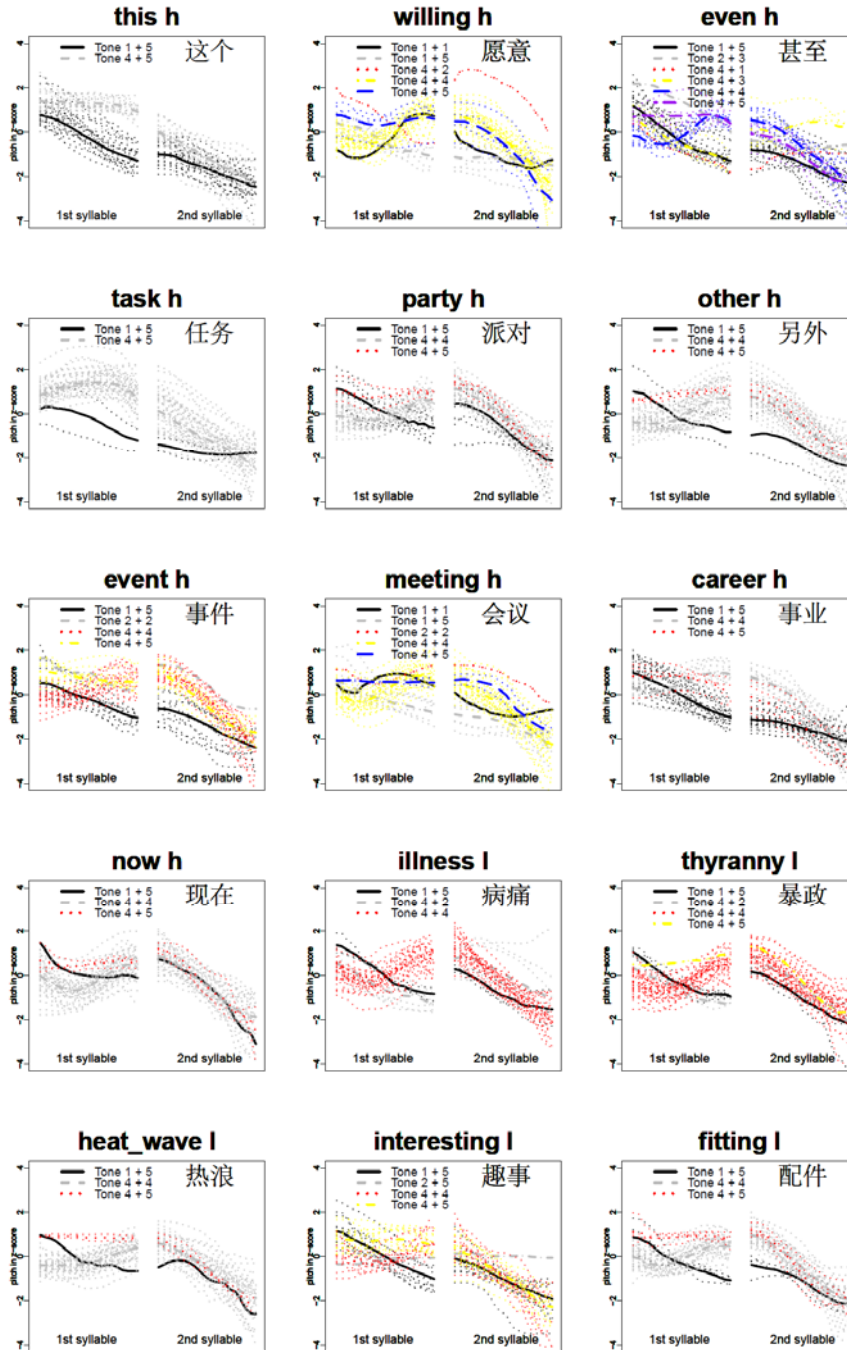


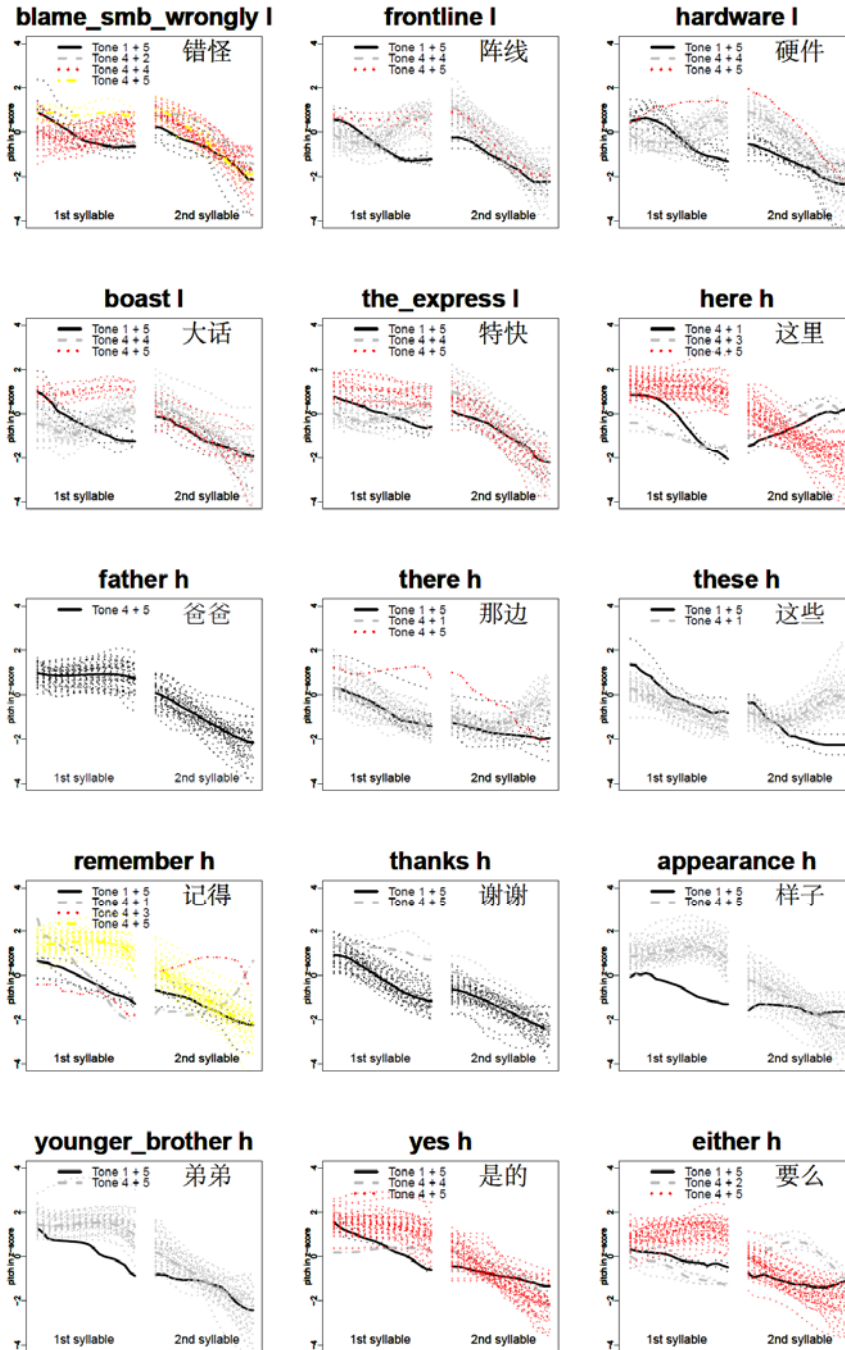
220 Tonal Bilingualism: the Case of Two Closely Related Chinese Dialects





222 Tonal Bilingualism: the Case of Two Closely Related Chinese Dialects





224 Tonal Bilingualism: the Case of Two Closely Related Chinese Dialects

