



Universiteit
Leiden
The Netherlands

Borneo : a quantitative analysis of botanical richness, endemism and floristic regions based on herbarium records

Raes, N.

Citation

Raes, N. (2009, February 11). *Borneo : a quantitative analysis of botanical richness, endemism and floristic regions based on herbarium records*. Retrieved from <https://hdl.handle.net/1887/13470>

Version: Corrected Publisher's Version

License: [Licence agreement concerning inclusion of doctoral thesis in the Institutional Repository of the University of Leiden](#)

Downloaded from: <https://hdl.handle.net/1887/13470>

Note: To cite this publication please use the final published version (if applicable).

Figure S4.1

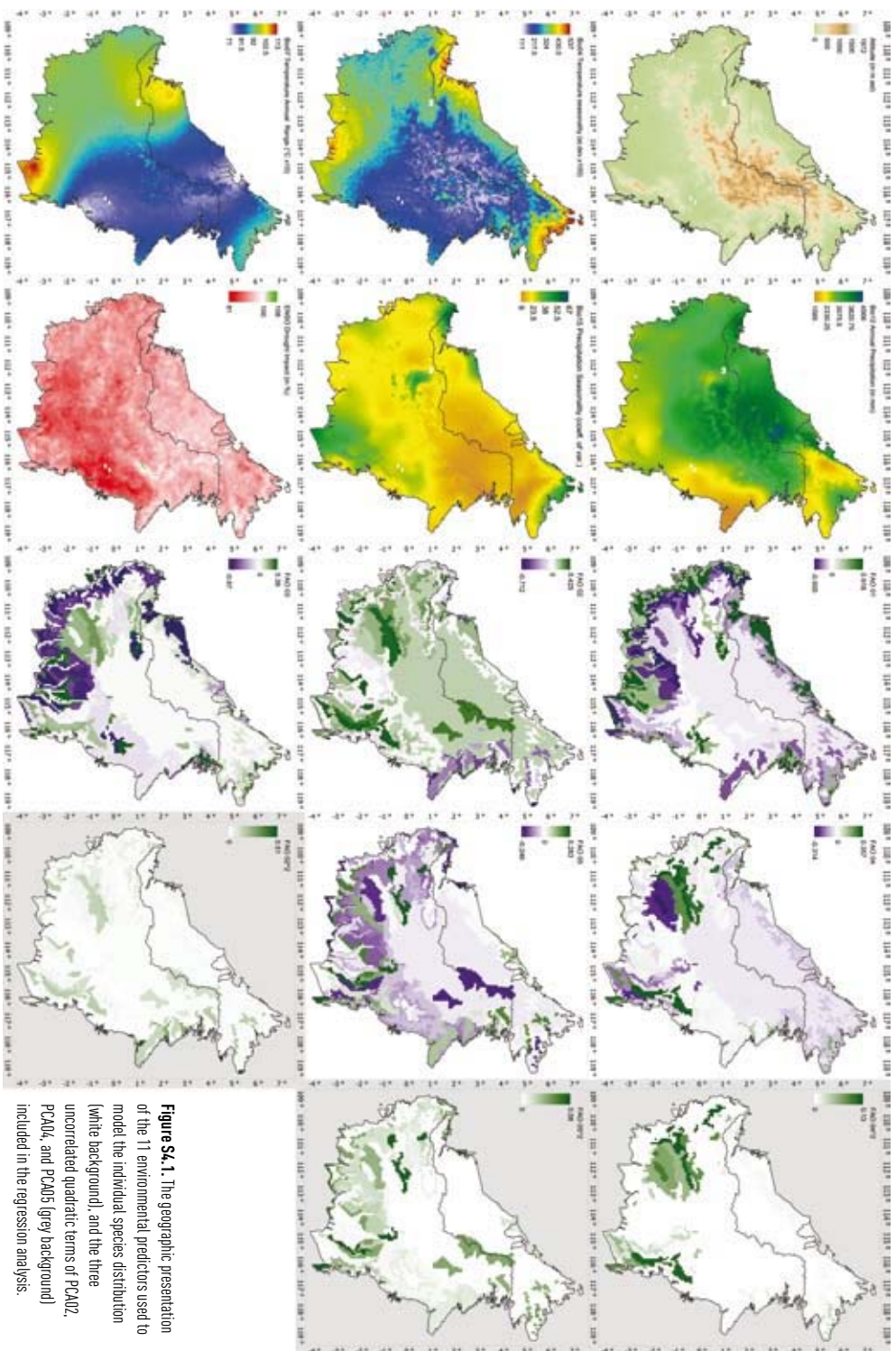


Figure S4.1. The geographic presentation of the 11 environmental predictors used to model the individual species distribution (white background), and the three uncorrelated quadratic terms of PCAD2, PCAD4, and PCAD5 (grey background) included in the regression analysis.

Figure S4.2

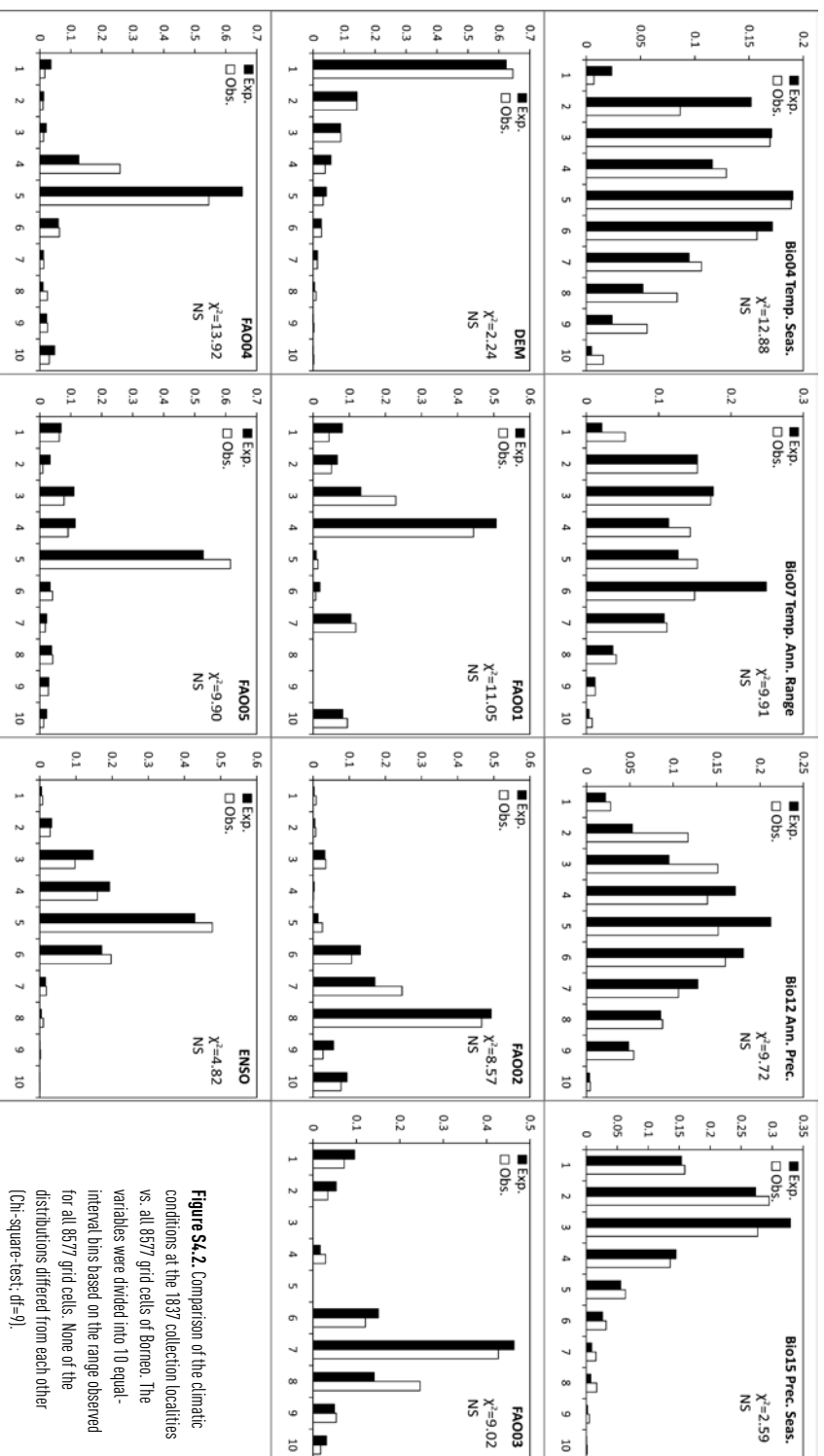


Figure S4.2. Comparison of the climatic conditions at the 1837 grid cells of Borneo vs. all 8577 grid cells of Borneo. The variables were divided into 10 equal-interval bins based on the range observed for all 8577 grid cells. None of the distributions differed from each other (Chi-square-test, $df=9$).

Figure S4.3

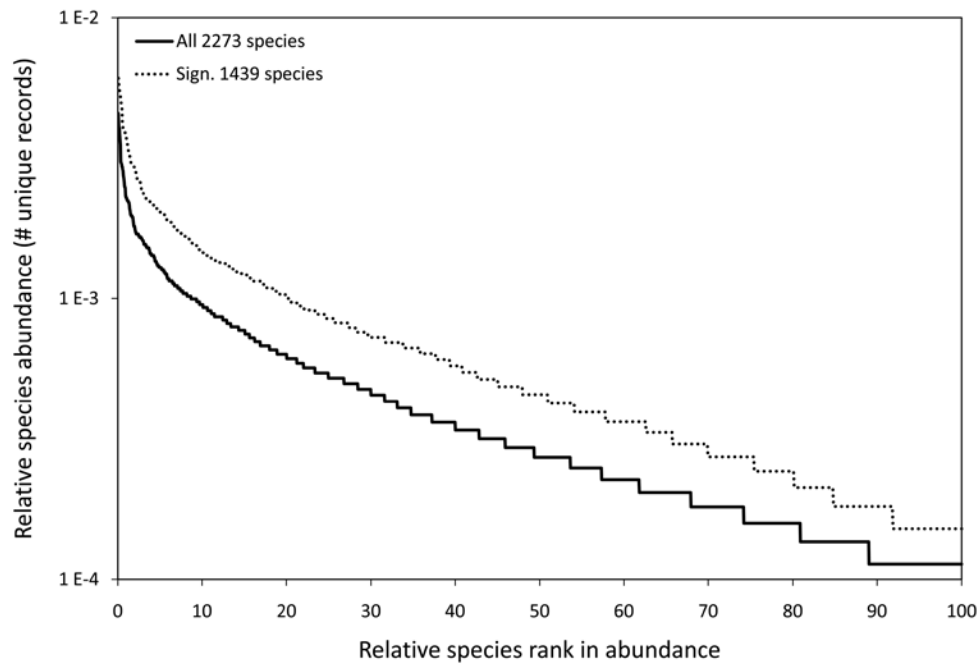


Figure S4.3. Relative species rank abundance curves based on the number of unique records per species for all 2273 modelled species, and for the 1439 species with a significant SDM.

Figure S5.1

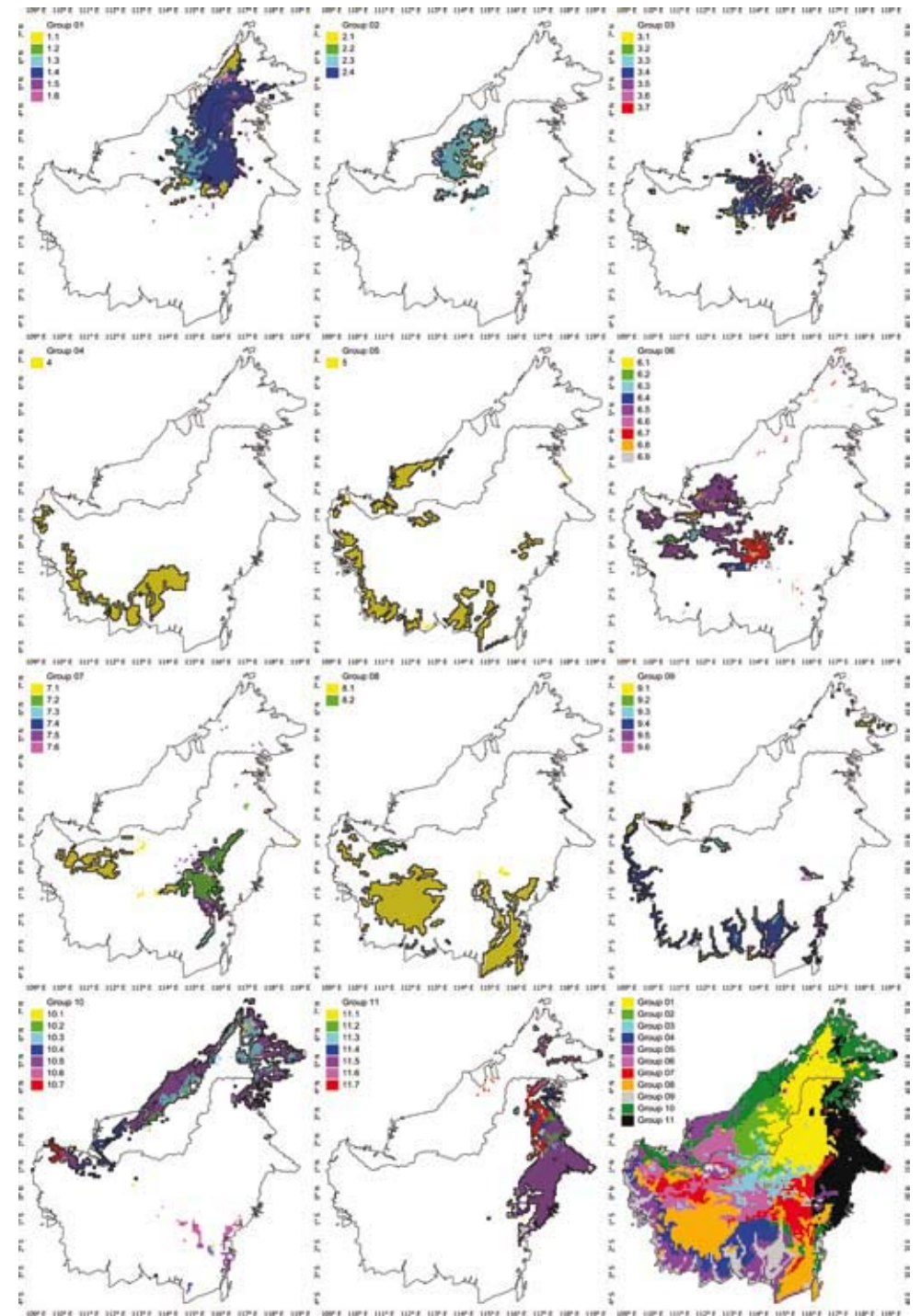


Figure S5.1. Geographical presentation of the terminal nodes of the CART per floristic region indicated by Group 01-11. Hatched areas indicate the geographical extent of the corresponding floristic regions derived from the species presence/absence cluster analysis. Lower right figure shows the CART areas belonging to each group.

Figure S5.2

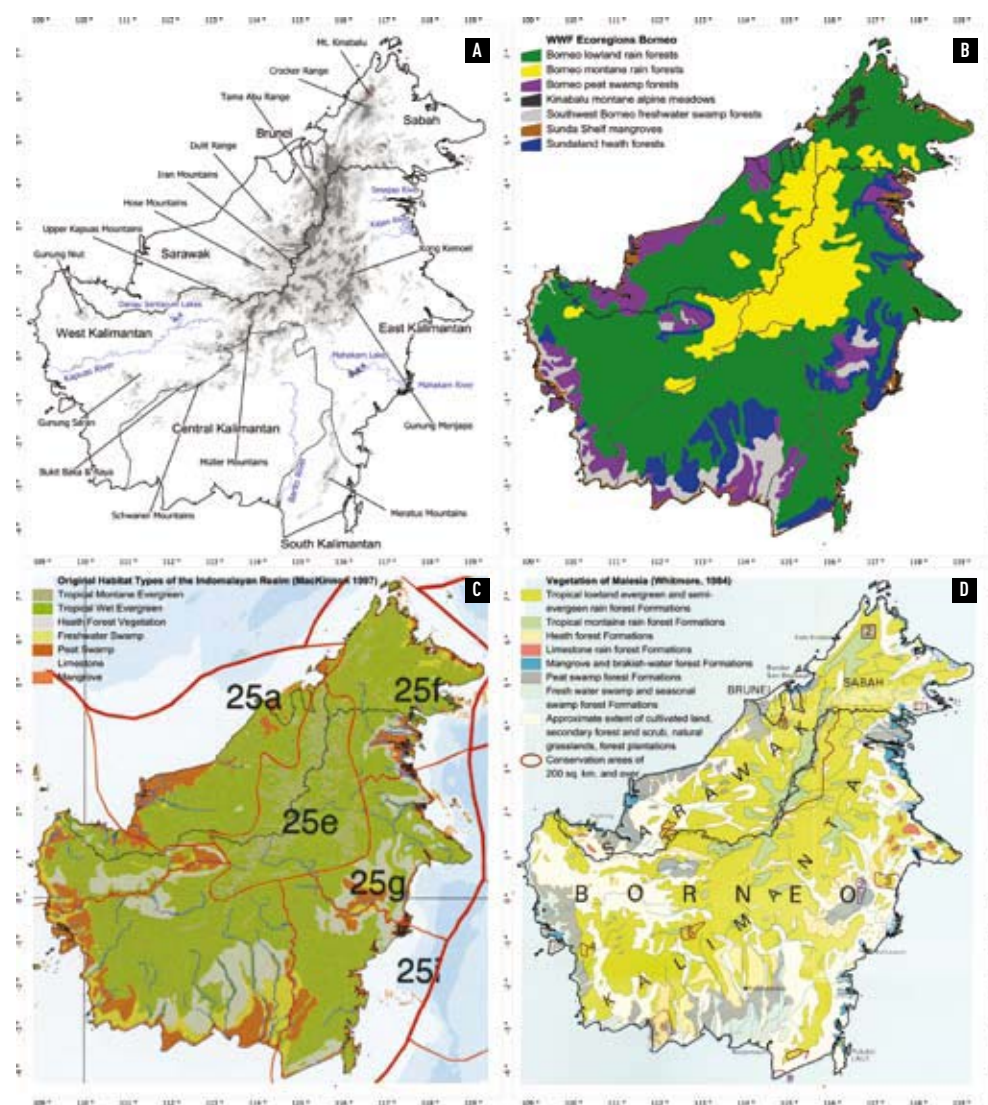


Figure S5.2. A) Map indicating the Bornean administrative provinces of Malaysia and Indonesia, the country of Brunei, the major mountain ranges and large rivers. Areas between 500-1000m in light-grey; areas above 1000m in dark-grey; Mt. Kinabalu in red ($\geq 2600\text{m}$) (derived from the SRTM 90m resolution altitude data (<<http://srtm.csi.cgiar.org>>)). **B)** WWF ecoregions of Borneo (<<http://www.worldwildlife.org/science/data/item1875.html>>; downloaded 06/02/2008); colours similar to floristic regions map. **C)** Detail from the 'Original Habitat Types of the Indomalayan Realm' of MacKinnon (1997). **D)** Detail from the 'Vegetation of Malesia' map of Whitmore (1984). Note that the Limestone areas of western Borneo identified by MacKinnon (C) are erroneously mapped by the WWF (B) as heath forest. All maps in geographic projection.

Table S3.1. Results for the 116 Shorea distribution models. The number of unique grid cells in which a species was collected is indicated by '# Records'. The SDM AUC values are given by 'AUC'. Bold values are significantly deviating from both null-models, italic only from the random null-model ($p < 0.05$). Fitted 95% confidence interval (C.I.) AUC values for the random null-model are given by '95% C.I. All'. Fitted 95% C.I. AUC values for the biased corrected null-model are given by '95% C.I. Bias'. Asterisks indicate significant deviance of the SDM from the null-models ($p < 0.05$). The 'Area (in %)' indicates the percentage of the total area of Borneo for which a species was predicted to be present, after the sensitivity-specificity sum maximization threshold was applied to the continuous probabilistic Maxent predictions (only given for significant SDMs).

#	Species	# Records	AUC	95% C.I. All	95% C.I. Bias	Area (in %)
1	<i>Shorea bullata</i> P.S.Ashton	5	0.9878	0.9498*	0.9625*	3.8
2	<i>S. carapae</i> Ashton	5	0.9014	0.9498	0.9625	
3	<i>S. flemmichii</i> Symington	5	0.8854	0.9498	0.9625	
4	<i>S. hemsleyana</i> King ex Foxw. subsp. grandiflora Brandis P.S.Ashton	5	0.9824	0.9498*	0.9625*	4.8
5	<i>S. kudatensis</i> G.H.S.Wood ex Meijer	5	0.9830	0.9498*	0.9625*	6.4
6	<i>S. parvistipulata</i> Heim subsp. nebulosa Meijer Ashton	5	0.9868	0.9498*	0.9625*	2.4
7	<i>S. pubistyla</i> P.S.Ashton	5	0.9910	0.9498*	0.9625*	1.8
8	<i>S. revoluta</i> P.S.Ashton	5	0.9976	0.9498*	0.9625*	1.2
9	<i>S. elliptica</i> Burck	6	0.9892	0.9324*	0.9473*	5.4
10	<i>S. obovoidea</i> Slooten	6	0.9935	0.9324*	0.9473*	1.7
11	<i>S. parvistipulata</i> Heim subsp. albifolia P.S.Ashton	6	0.8618	0.9324	0.9473	
12	<i>S. rubella</i> P.S.Ashton	6	0.9663	0.9324*	0.9473*	7.7
13	<i>S. symingtonii</i> G.H.S.Wood	6	0.9898	0.9324*	0.9473*	2.2
14	<i>S. agami</i> P.S.Ashton subsp. diminuta Ashton	7	0.9050	0.9150	0.9321	
15	<i>S. asahi</i> P.S.Ashton	7	0.9411	0.9150*	0.9321*	17.0
16	<i>S. biawak</i> P.S.Ashton	7	0.9776	0.9150*	0.9321*	8.1
17	<i>S. iliasii</i> P.S.Ashton	7	0.9516	0.9150*	0.9321*	4.1
18	<i>S. laxa</i> Slooten	7	0.9753	0.9150*	0.9321*	6.4
19	<i>S. macrobalanos</i> P.S.Ashton	7	0.8777	0.9150	0.9321	
20	<i>S. pachyphylla</i> Ridl. ex Symington	7	0.9671	0.9150*	0.9321*	13.6
21	<i>S. uliginosa</i> Foxw.	7	0.9376	0.9150*	0.9321*	14.8
22	<i>S. macrantha</i> Brandis	8	0.9116	0.8977*	0.9169	4.4
23	<i>S. agami</i> P.S.Ashton subsp. agami P.S.Ashton	9	0.9269	0.8803*	0.9017*	20.1
24	<i>S. curtisii</i> Dyer ex King	9	0.9296	0.8803*	0.9017*	18.5
25	<i>S. cuspidata</i> P.S.Ashton	9	0.9884	0.8803*	0.9017*	5.0
26	<i>S. falcifera</i> Dyer	9	0.9509	0.8803*	0.9017*	25.0
27	<i>S. mujongensis</i> P.S.Ashton	9	0.8916	0.8803*	0.9017*	7.7
28	<i>S. ovalis</i> Korth. Blume subsp. sarawakensis P.S.Ashton	9	0.9580	0.8803*	0.9017*	15.3
29	<i>S. sagittata</i> Ashton	9	0.9492	0.8803*	0.9017*	16.4
30	<i>S. teysmanniana</i> Dyer	9	0.9374	0.8803*	0.9017*	15.8
31	<i>S. almon</i> Foxw.	10	0.9196	0.8900*	0.9201	6.7
32	<i>S. dasyphylla</i> Foxw.	10	0.8769	0.8900	0.9201	
33	<i>S. grattissima</i> Wall. ex Kurz Dyer	10	0.9916	0.8900*	0.9201*	3.8
34	<i>S. inappendiculata</i> Burck	10	0.9267	0.8900*	0.9201*	9.8
35	<i>S. myrioneva</i> Symington	10	0.9292	0.8900*	0.9201*	25.1
36	<i>S. parvistipulata</i> Heim subsp. parvistipulata	10	0.8693	0.8900	0.9201	
37	<i>S. stootenii</i> G.H.S.Wood	10	0.8990	0.8900*	0.9201	12.0
38	<i>S. albida</i> Symington	11	0.9746	0.8821*	0.9097*	3.5
39	<i>S. angustifolia</i> Ashton	11	0.8842	0.8821*	0.9097*	30.0
40	<i>S. crassa</i> P.S.Ashton	11	0.9439	0.8821*	0.9097*	19.0
41	<i>S. foxworthii</i> Symington	11	0.9555	0.8821*	0.9097*	17.7
42	<i>S. longiflora</i> Brandis Symington	11	0.8696	0.8821	0.9097	
43	<i>S. acuminatissima</i> Symington	12	0.9737	0.8741*	0.9021*	12.2
44	<i>S. faugetioides</i> P.S.Ashton	12	0.8799	0.8741*	0.9021	24.5
45	<i>S. isoptera</i> P.S.Ashton	12	0.9808	0.8741*	0.9021*	6.9

Table S3.1. (continued).

#	Species	# Records	AUC	95% C.I. All	95% C.I. Bias	Area (in %)
46	<i>S. rugosa</i> Heim	12	0.8838	0.8741*	0.9021	19.1
47	<i>S. andulensis</i> P.S.Ashton	13	0.9623	0.8661*	0.8973*	10.2
48	<i>S. balangeran</i> Korth. Burck	13	0.9555	0.8661*	0.8973*	13.9
49	<i>S. platycarpa</i> Heim	13	0.8557	0.8661	0.8973	
50	<i>S. stenoptera</i> Burck	13	0.9295	0.8661*	0.8973*	15.3
51	<i>S. domatiosa</i> P.S.Ashton	14	0.9701	0.8581*	0.8953*	14.6
52	<i>S. macropterifolia</i> P.S.Ashton	14	0.9445	0.8581*	0.8953*	13.1
53	<i>S. splendida</i> Ashton	14	0.8736	0.8581*	0.8953*	38.0
54	<i>S. flaviflora</i> G.H.S.Wood ex P.S.Ashton	15	0.9622	0.9480*	0.9622	16.1
55	<i>S. macroptera</i> Dyer subsp. bailloni	15	0.9737	0.9480*	0.9622*	5.9
56	<i>S. retusa</i> Meijer	15	0.9695	0.9480*	0.9622*	6.4
57	<i>S. confusa</i> P.S.Ashton	16	0.9882	0.9438*	0.9595*	8.1
58	<i>S. exelliptica</i> Meijer	16	0.9569	0.9438*	0.9595*	17.1
59	<i>S. longisperma</i> Roxb.	16	0.9416	0.9438	0.9595	
60	<i>S. platyclados</i> Slooten ex Endert	16	0.9541	0.9438*	0.9595	8.8
61	<i>S. falciferoides</i> Foxw.	17	0.9702	0.9397*	0.9569*	7.9
62	<i>S. patiensis</i> P.S.Ashton	17	0.9501	0.9397*	0.9569*	17.4
63	<i>S. balanocarpoides</i> Symington	18	0.9829	0.9357*	0.9543*	5.1
64	<i>S. pilosa</i> P.S.Ashton	18	0.9434	0.9357*	0.9543*	6.6
65	<i>S. superba</i> Foxw.	18	0.9846	0.9357*	0.9543*	8.7
66	<i>S. macroptera</i> Dyer	19	0.9241	0.9318	0.9517	
67	<i>S. ovalis</i> Korth. Blume subsp. ovalis	19	0.9561	0.9318*	0.9517*	13.5
68	<i>S. brunnescens</i> P.S.Ashton	20	0.9778	0.9280*	0.9492*	5.3
69	<i>S. hypoleuca</i> Meijer	20	0.9822	0.9280*	0.9492*	8.5
70	<i>S. monticola</i> P.S.Ashton	20	0.9822	0.9280*	0.9492*	5.2
71	<i>S. scrobiculata</i> Burck	21	0.9646	0.9243*	0.9468*	8.6
72	<i>S. virescens</i> Parisj	21	0.9550	0.9243*	0.9468*	16.6
73	<i>S. xanthophylla</i> Symington	21	0.9662	0.9243*	0.9468*	6.9
74	<i>S. coriacea</i> Burck	22	0.9643	0.9206*	0.9444*	12.0
75	<i>S. palembanica</i> Miq.	22	0.9426	0.9206*	0.9444*	6.2
76	<i>S. venulosa</i> G.H.S.Wood ex Meijer	22	0.9818	0.9206*	0.9444*	5.6
77	<i>S. mecistopteryx</i> Ridl.	23	0.9368	0.9170*	0.9420	13.5
78	<i>S. obscura</i> Meijer	24	0.9251	0.9135*	0.9397*	8.9
79	<i>S. macroptera</i> Dyer subsp. sandakanensis Symington P.S.Ashton	25	0.9575	0.9101*	0.9374*	5.4
80	<i>S. ovata</i> Dyer ex Brandis	25	0.9818	0.9101*	0.9374*	6.7
81	<i>S. argentifolia</i> Symington	27	0.9396	0.9035*	0.9330*	17.8
82	<i>S. havilandi</i> Brandis	27	0.9762	0.9035*	0.9330*	10.5
83	<i>S. maxwelliana</i> King	27	0.9604	0.9035*	0.9330*	6.7
84	<i>S. ochracea</i> Symington	27	0.9203	0.9035*	0.9330	14.2
85	<i>S. polyandra</i> P.S.Ashton	27	0.9434	0.9035*	0.9330*	22.7
86	<i>S. rubra</i> P.S.Ashton	27	0.9786	0.9035*	0.9330*	7.3
87	<i>S. agami</i> P.S.Ashton	28	0.9696	0.9003*	0.9308*	11.3
88	<i>S. lamellata</i> Foxw.	28	0.9525	0.9003*	0.9308*	10.1
89	<i>S. quadrinervis</i> Slooten	28	0.9515	0.9003*	0.9308*	8.0
90	<i>S. kunstleri</i> King	30	0.9136	0.8942*	0.9267	18.0
91	<i>S. hopeifolia</i> Heim Symington	32	0.8958	0.8883*	0.9226	16.7
92	<i>S. scaberrima</i> Burck	32	0.9464	0.8883*	0.9226*	10.2
93	<i>S. ferruginea</i> Dyer ex Brandis	34	0.9380	0.8827*	0.9188*	22.1
94	<i>S. scabrida</i> Symington	34	0.9494	0.8827*	0.9188*	18.5
95	<i>S. amplexicaulis</i> Ashton	35	0.9246	0.8800*	0.9169*	11.0
96	<i>S. beccariana</i> Burck	35	0.9047	0.8800*	0.9169*	25.7
97	<i>S. parvifolia</i> Dyer subsp. parvifolia	35	0.9104	0.8800*	0.9169*	18.1
98	<i>S. atrinervis</i> Symington	37	0.9365	0.8748*	0.9133*	9.1

Table S3.1. (continued).

#	Species	# Records	AUC	95% C.I. All	95% C.I. Bias	Area (in %)
99	<i>S. ovalis</i> Korth. Blume	37	0.9546	0.8748*	0.9133*	20.0
100	<i>S. bracteolata</i> Dyer	38	0.9533	0.8722*	0.9115*	17.4
101	<i>S. guiso</i> Blanco Blume	38	0.9559	0.8722*	0.9115*	17.7
102	<i>S. parvifolia</i> Dyer	38	0.9243	0.8722*	0.9115*	21.9
103	<i>S. johorensis</i> Foxw.	39	0.9358	0.8698*	0.9098*	20.6
104	<i>S. faguetiana</i> Heim	43	0.9348	0.8605*	0.9032*	7.4
105	<i>S. macrophylla</i> de Vriese P.S.Ashton	46	0.8819	0.8542*	0.8987*	26.8
106	<i>S. smithiana</i> Symington	46	0.9454	0.8542*	0.8987*	10.5
107	<i>S. fallax</i> Meijer	47	0.9404	0.8522*	0.8972*	10.0
108	<i>S. parvistipulata</i> Heim	52	0.9206	0.8428*	0.8904*	12.8
109	<i>S. seminis</i> de Vriese Slooten	55	0.8965	0.8377*	0.8866*	30.2
110	<i>S. gibbosa</i> Bandis	68	0.9042	0.8191*	0.8730*	18.3
111	<i>S. multiflora</i> Burck Symington	68	0.9272	0.8191*	0.8730*	16.9
112	<i>S. laevis</i> Ridl.	69	0.8778	0.8178*	0.8721*	19.9
113	<i>S. pauciflora</i> King	73	0.8666	0.8131*	0.8687*	12.5
114	<i>S. pinanga</i> Scheff.	73	0.8609	0.8131*	0.8687*	22.1
115	<i>S. leprosula</i> Miq.	86	0.8872	0.7988*	0.8593*	23.5
116	<i>S. parvifolia</i> Dyer subsp. <i>velutinata</i> P.S.Ashton	92	0.8475	0.7923*	0.8557*	21.2

Table S4.1. Pairwise Pearson's correlation coefficients (r) for the 14 environmental predictors. Legend: DEM - Digital Elevation Model; Bio04 – Temperature seasonality; Bio07 – Temperature annual range; Bio12 – Annual precipitation; Bio15 – Precipitation seasonality; PCA01-05 – PCA soil axes 1-5; ENSO – Drought impact by El Niño events on NDVI values. Table S5.1. Results of the Indicator Species Analysis (ISA) on 11 'Cluster Groups' and 8577 grid cells. Species are ranked on Indicator Values (IndVal) per cluster group. 'Area (in %)' gives both the percentages of the surface of Borneo covered by a species derived from its significant Species Distribution Model (SDM). Values in the table give the rounded 'percentage of perfect indication'.

	DEM	Bio04	Bio07	Bio12	Bio15	PCA01	PCA02	PCA03	PCA04	PCA05	ENSO	PCA02 ²	PCA04 ²
Bio04	-0.512												
Bio07	-0.361	0.737											
Bio12	0.207	-0.167	0.030										
Bio15	-0.412	0.514	0.507	-0.254									
PCA01	-0.216	0.194	0.142	-0.030	0.185								
PCA02	0.274	-0.078	0.094	0.214	0.040	0.138							
PCA03	0.226	-0.214	-0.202	0.066	-0.168	-0.306	-0.036						
PCA04	-0.064	0.026	0.081	-0.095	0.149	0.034	0.151	-0.018					
PCA05	-0.136	0.033	0.004	-0.062	0.048	0.068	-0.011	0.021	-0.010				
ENSO	0.372	-0.078	-0.099	0.274	-0.390	-0.053	-0.003	0.128	-0.083	0.034			
PCA02 ²	0.078	-0.035	-0.023	-0.208	-0.026	-0.028	0.044	0.022	0.364	0.230	0.084		
PCA04 ²	-0.085	0.134	0.193	-0.109	0.184	-0.230	0.323	0.285	0.464	0.119	-0.126	0.331	
PCA05 ²	-0.062	0.149	0.112	-0.140	0.094	-0.170	0.060	-0.078	0.049	0.112	-0.058	0.334	0.292

Table S5.1. Results of the Indicator Species Analysis (ISA) on 11 'Cluster Groups' and 8577 grid cells. Species are ranked on Indicator Values (IndVal) per cluster group. 'Area (in %)' gives both the percentages of the surface of Borneo covered by a species derived from its significant Species Distribution Model (SDM). Values in the table give the rounded 'percentage of perfect indication'.

sp#	Family	Species	Cluster Group	IndVal	Area (in %)	1	2	3	4	5	6	7	8	9	10	11
1239	Cunoniaceae	<i>Weinmannia ophanoneura</i> Airy Shaw	1	69	12.3	85	0	12	0	0	0	0	0	0	1	1
1324	Orchidaceae	<i>Appendicula cristata</i> Blume	1	65	12.85	82	0	5	0	0	0	1	0	0	7	5
1356	Orchidaceae	<i>Bulbophyllum rhizomatosum</i> Alb. & Schwein.	1	64.3	14.2	73	0	25	0	0	0	0	0	0	1	1
1364	Orchidaceae	<i>Chelonistele ingloria</i> J.J.Sm. Carr	1	64.3	12.94	78	6	13	0	0	0	0	0	0	1	2
582	Fagaceae	<i>Quercus valdinervosa</i> Soepadmo	1	61.4	13.64	75	0	15	0	0	0	0	0	0	8	1
658	Symplocaceae	<i>Symplocos ophirensis</i> C.B. Clarke subsp. <i>cumingiana</i> Brand Noot. var. <i>cumingiana</i>	1	61.2	10.05	92	0	1	0	0	0	0	0	0	5	2
1204	Myristicaceae	<i>Horsfieldia subalpina</i> J.Sinclair subsp. <i>kinabaluensis</i> W.J.de Wilde	1	60.6	16.65	64	1	31	0	0	0	0	0	0	2	3
1168	Loranthaceae	<i>Helixanthera spicata</i> Danser	1	60	15.73	69	6	9	0	0	0	2	5	0	6	5
1240	Cunoniaceae	<i>Weinmannia fraxinea</i> D.Don Miq.	1	59.6	13.84	74	2	11	0	0	0	3	4	1	3	3
461	Ericaceae	<i>Rhododendron himantodes</i> Sleumer	1	58.9	14.41	71	1	17	0	0	0	0	4	0	3	3
650	Symplocaceae	<i>Symplocos laeteviridis</i> Stapf var. <i>basiratunda</i> Noot.	1	57	13.83	74	3	6	0	0	0	0	5	0	9	4
1433	Orchidaceae	<i>Thelesis variabilis</i> Ames & C.Schweinf.	1	56.9	13.7	71	0	20	0	0	0	0	4	0	2	2
1381	Orchidaceae	<i>Coelogyne rhadobulbon</i> Schltr.	1	56.2	19.73	57	4	22	0	0	0	4	0	0	4	9
881	Araliaceae	<i>Schefflera trineura</i> Frodin	1	56.1	17.07	60	10	23	0	0	0	2	0	0	3	3
492	Juglandaceae	<i>Engelhardtia roxburghiana</i> Wall.	1	54.1	17.58	62	3	10	0	0	0	0	1	0	12	11
1389	Orchidaceae	<i>Dendrobium corallorhizon</i> J.J.Sm.	1	53.9	16.96	64	0	6	0	0	0	1	3	0	5	20
75	Euphorbiaceae	<i>Antidesma neurocarpum</i> Miq. var. <i>neurocarpum</i>	1	52.9	21.76	54	6	11	0	0	0	0	0	0	13	16
998	Rosaceae	<i>Prunus arborea</i> Blume Kalkman var. <i>alticola</i> Kalkman	1	52.7	17.27	58	7	25	0	0	0	0	1	0	1	8
1361	Orchidaceae	<i>Calanthe pulchra</i> Blume Lindl.	1	52.5	14.53	65	1	25	0	0	0	0	4	0	2	3
458	Ericaceae	<i>Rhododendron crassifolium</i> Stapf	1	51.4	18.08	54	10	30	0	0	0	0	0	0	5	0
1358	Orchidaceae	<i>Bulbophyllum striatellum</i> Ridl.	1	51.2	16.85	56	13	26	0	0	0	0	0	0	2	2
1341	Orchidaceae	<i>Bulbophyllum ecarinatum</i> J.J.Sm. J.J.Sm.	1	50.6	11.89	74	4	4	0	0	0	1	0	0	6	10
1338	Orchidaceae	<i>Bulbophyllum coniferum</i> Ridl.	1	49.3	15.1	61	0	30	0	0	0	0	0	0	9	0
1375	Orchidaceae	<i>Coelogyne longibulbosa</i> Ames & C.Schweinf.	1	49.3	10.99	73	0	26	0	0	0	0	0	0	0	1
1345	Orchidaceae	<i>Bulbophyllum membranifolium</i> Hook.f.	1	49	14.54	62	0	29	0	0	0	0	3	0	0	6
1236	Nepenthaceae	<i>Nepenthes lowii</i> Hook.f.	1	48.7	11.04	74	0	19	0	0	0	0	0	0	2	6
1376	Orchidaceae	<i>Coelogyne moultonii</i> J.J.Sm.	1	48.7	17.3	57	1	25	0	0	0	0	11	0	2	3
1157	Illiciaceae	<i>Illicium stapfii</i> Merr.	1	48.1	15.34	59	0	32	0	0	0	0	3	0	5	1
1192	Myristicaceae	<i>Horsfieldia endertii</i> W.J.de Wilde	1	47.6	7.19	96	0	1	0	0	0	0	0	0	1	1
514	Clethraceae	<i>Clethra longispicata</i> J.J.Sm.	1	47.5	7.92	91	0	4	0	0	0	0	2	0	1	3
1399	Orchidaceae	<i>Dendrochilum imbricatum</i> Ames	1	46.9	8.23	89	0	0	0	0	0	0	0	0	10	1
490	Ericaceae	<i>Vaccinium uroglossum</i> Sleumer	1	46.4	13.91	60	0	36	0	0	0	0	2	0	0	1
654	Symplocaceae	<i>Symplocos laeteviridis</i> Stapf var. <i>pauciflora</i> Noot.	1	46.4	13.49	62	10	21	0	0	0	0	1	0	3	2
85	Euphorbiaceae	<i>Aporosa chondroneura</i> Airy Shaw Schot	1	46.1	20.89	47	20	24	0	0	0	0	0	0	4	5
891	Aristolochiaceae	<i>Aristolochia minutiflora</i> Ridl. ex Gamble	1	46.1	15.55	58	0	27	0	0	0	1	3	0	4	6
1004	Rosaceae	<i>Prunus aocarpa</i> Stapf Kalkman	1	45.6	11.37	69	0	25	0	0	0	0	1	0	0	5
488	Ericaceae	<i>Vaccinium retivenium</i> Sleumer	1	45.3	17.14	55	0	27	0	0	1	1	0	0	13	3
1420	Orchidaceae	<i>Nabalua angustifolia</i> de Vogel	1	45	7.18	92	0	6	0	0	0	0	0	0	0	1
1424	Orchidaceae	<i>Pholidota clemensii</i> Ames	1	43.6	8.46	80	0	19	0	0	0	0	0	0	1	0
486	Ericaceae	<i>Vaccinium pachydermum</i> Stapf	1	43.3	13.78	62	12	4	0	0	0	0	0	0	16	5
1178	Loranthaceae	<i>Macrosolen melintangensis</i> Korth. Miq.	1	43.3	11.85	69	0	4	0	6	0	0	0	0	12	9
1347	Orchidaceae	<i>Bulbophyllum minutulum</i> Ridl.	1	43	12.57	66	0	14	0	0	0	0	8	0	1	11
466	Ericaceae	<i>Rhododendron micromalayana</i> Sleumer	1	42.9	8.02	86	2	1	0	0	0	0	0	0	3	8
473	Ericaceae	<i>Rhododendron quadrasianum</i> S.Vidal var. <i>villosum</i> J.J.Sm.	1	42.6	21.39	47	0	28	0	1	2	1	7	0	9	5
1337	Orchidaceae	<i>Bulbophyllum comberi</i> J.J.Verm.	1	42.6	15.75	56	0	26	0	0	0	1	3	0	6	8
1371	Orchidaceae	<i>Coelogyne dayana</i> Rchb.f.	1	42.5	17.29	52	8	13	0	0	0	1	5	13	3	4

Table S5.1. (continued).

sp#	Family	Species	Cluster Group	IndVal	Area (in %)	1	2	3	4	5	6	7	8	9	10	11
1398	Orchidaceae	<i>Dendrochilum gracilipes</i> Carr	1	42.2	18.49	51	10	19	0	0	0	0	11	0	4	4
1405	Orchidaceae	<i>Entomophobia kinabaluensis</i> Ames de Vogel	1	42.2	20.73	44	5	40	0	0	4	2	0	0	3	2
1334	Orchidaceae	<i>Bulbophyllum brevicolumna</i> J.J.Verm.	1	41.8	19.38	50	12	14	0	0	0	0	9	0	7	7
463	Ericaceae	<i>Rhododendron lanceolatum</i> Ridl.	1	40.6	22.09	43	13	30	0	0	0	1	5	0	7	2
499	Loganiaceae	<i>Mitreola sphaerocarpa</i> Leenh. Leenh.	1	40.6	18.75	51	6	8	0	0	0	4	5	0	10	16
546	Fagaceae	<i>Castanopsis clemensii</i> Soepadmo	1	40.5	11.73	67	0	8	0	0	0	0	1	0	7	17
926	Podocarpaceae	<i>Dacrydium xanthandrum</i> Pilg.	1	40.5	16.09	52	0	37	0	0	0	0	2	0	7	2
1359	Orchidaceae	<i>Bulbophyllum tortuosum</i> Blume Lindl.	1	40.4	20.07	48	0	29	0	0	1	0	12	1	5	4
451	Ericaceae	<i>Diplycosia salicifolia</i> Sleumer	1	40.3	20.58	47	18	6	0	0	0	0	4	0	14	10
1322	Orchidaceae	<i>Appendicula congesta</i> Ridl.	1	40.2	12.69	63	0	12	0	0	0	0	3	0	11	11
412	Campanulaceae	<i>Lobelia zeylanica</i> L.	1	40.1	14	58	0	21	0	0	1	0	6	7	2	6
477	Ericaceae	<i>Rhododendron suaveolens</i> Sleumer	1	40.1	10	72	0	11	0	0	0	0	1	0	4	13
1414	Orchidaceae	<i>Eria robusta</i> Blume Lindl.	1	40.1	7.54	85	0	6	0	0	0	0	0	0	1	8
1377	Orchidaceae	<i>Coelogyne planiscapa</i> Carr	1	39.7	22.11	44	14	19	0	1	0	0	11	0	5	5
1155	Daphniphyllaceae	<i>Daphniphyllum glaucescens</i> Blume subsp. <i>borneense</i> Stafp T.C.Huang	1	39.3	12.18	60	0	33	0	0	0	0	3	0	1	4
1400	Orchidaceae	<i>Dendrochilum longipes</i> J.J.Sm.	1	39	8.29	75	0	23	0	0	0	0	1	0	0	0
1333	Orchidaceae	<i>Bulbophyllum auratum</i> Lindl. Rchb.f.	1	38.4	16.73	52	2	22	0	0	1	0	11	0	3	9
1392	Orchidaceae	<i>Dendrobium kiauense</i> Ames & C.Schweinf.	1	38.4	23.96	38	14	35	0	0	2	1	0	0	5	3
1342	Orchidaceae	<i>Bulbophyllum flavescens</i> Blume Lindl.	1	38.3	21.48	44	7	24	0	0	3	3	7	0	8	5
1363	Orchidaceae	<i>Chelonistele amplissima</i> Ames & C.Schweinf. Carr	1	38.3	23.74	42	7	22	0	0	1	4	0	0	8	17
89	Euphorbiaceae	<i>Aporosa fulvovittata</i> Schot	1	38.1	11.9	65	0	3	0	0	0	0	3	0	15	14
95	Polygalaceae	<i>Xanthophyllum tenue</i> Chodat	1	38	8.58	78	0	0	0	0	0	0	0	0	18	4
868	Araliaceae	<i>Arthrophyllum borneensis</i> Philipson Merr.	1	37.9	13.94	56	0	31	0	0	0	0	12	0	0	2
1372	Orchidaceae	<i>Coelogyne hirtella</i> J.J.Sm.	1	37.6	10.2	66	1	22	0	0	0	0	1	0	5	5
1270	Moraceae	<i>Ficus eumorpha</i> Corner	1	37.4	7.35	81	0	13	0	0	0	0	1	0	0	5
1395	Orchidaceae	<i>Dendrobium orbiculare</i> J.J.Sm.	1	37.4	16.51	51	0	24	0	0	0	0	5	0	5	14
1321	Orchidaceae	<i>Appendicula calcarata</i> Ridl.	1	37.2	8.22	79	0	3	0	0	0	0	13	0	1	4
414	Campanulaceae	<i>Pentaphragma aurantiaca</i> Stafp	1	37	17.22	48	3	37	0	0	0	0	10	0	0	2
1354	Orchidaceae	<i>Bulbophyllum pocillum</i> J.J.Verm.	1	36.6	7.05	80	0	19	0	0	0	0	0	0	0	0
583	Fagaceae	<i>Trigonobalanus verticillata</i> Forman	1	36.5	24.43	39	6	32	0	0	5	0	0	0	7	11
698	Anacardiaceae	<i>Rhus borneensis</i> Stafp	1	36.3	5.19	99	0	0	0	0	0	0	0	0	0	1
1323	Orchidaceae	<i>Appendicula cornuta</i> Blume	1	36.3	26.82	36	23	19	0	0	2	0	0	0	8	12
646	Symplocaceae	<i>Symplocos henschelii</i> Moric. Benth. ex C.B.Clarke subsp. <i>henschelii</i> var. <i>henschelii</i>	1	36.1	11.1	60	19	13	0	0	0	0	1	0	7	0
1302	Moraceae	<i>Ficus setiflora</i> Stafp var. <i>adelpha</i> Corner	1	36	12.81	58	0	23	0	0	0	0	16	0	1	2
511	Staphyleaceae	<i>Turpinia grandis</i> B.L.Linden	1	35.9	10.16	69	0	0	0	0	0	0	1	0	16	14
1410	Orchidaceae	<i>Eria longifolia</i> Hook.f.	1	35.6	7.79	77	0	11	0	0	0	0	1	1	10	0
481	Ericaceae	<i>Vaccinium claoxylon</i> J.J.Sm.	1	35.4	21.08	41	9	31	0	0	4	1	3	0	8	2
449	Ericaceae	<i>Diplycosia punctulata</i> Stafp	1	35	17.63	51	0	11	0	0	0	0	28	0	9	1
1404	Orchidaceae	<i>Dilochia cantleyi</i> Hook.f. Ridl.	1	34.3	26.49	35	14	33	0	0	7	2	4	0	3	3
1365	Orchidaceae	<i>Chelonistele sulphurea</i> Blume Pfitzer var. <i>sulphurea</i>	1	34.2	22.69	38	27	13	0	6	0	1	0	0	9	5
962	Sabiaceae	<i>Meliosma rufopilosa</i> M.R.Hend.	1	33.9	11.17	63	0	11	0	0	0	0	18	0	5	3
1388	Orchidaceae	<i>Dendrobium cinereum</i> J.J.Sm.	1	33.7	23.08	37	16	29	0	0	0	3	0	3	1	10
1415	Orchidaceae	<i>Eria saccifera</i> Hook.f.	1	33.5	28.58	34	8	31	0	0	7	1	4	0	6	9
1437	Orchidaceae	<i>Trichostema aurea</i> Ridl. Carr	1	33.4	16.64	46	0	34	0	0	2	2	0	0	11	5
586	Cyperaceae	<i>Carex cruciata</i> Wahlenb. var. <i>cruciata</i>	1	33.3	17.24	49	0	16	0	0	0	0	8	0	9	19
1368	Orchidaceae	<i>Coelogyne compressicaulis</i> Ames & C.Schweinf.	1	33	5.4	90	0	10	0	0	0	0	0	0	0	0
84	Euphorbiaceae	<i>Aporosa caloneura</i> Airy Shaw	1	32.2	19.75	40	11	26	0	0	13	0	4	0	4	1
575	Fagaceae	<i>Lithocarpus papillifer</i> Hatus. ex Soepadmo	1	32.2	13.2	50	0	39	0	0	3	0	0	0	7	1
1425	Orchidaceae	<i>Pholidota gibbosa</i> Blume de Vriese	1	32	27.49	32	15	31	0	0	4	6	1	3	3	6
487	Ericaceae	<i>Vaccinium phillyroides</i> Sleumer	1	31.7	26.02	33	24	25	0	0	7	0	0	0	10	1
454	Ericaceae	<i>Rhododendron bagobonum</i> J.J.Copel.	1	31.5	29.87	32	2	28	0	9	7	5	0	0	5	12
1283	Moraceae	<i>Ficus macilentia</i> King	1	31.2	6.53	81	1	3	0	0	0	0	4	0	11	0
649	Symplocaceae	<i>Symplocos laeteviridis</i> Stafp var. <i>alternifolia</i> Noot.	1	30.6	11.88	58	0	7	0	0	0	0	9	0	9	17

Table S5.1. (continued).

sp#	Family	Species	Cluster Group	IndVal	Area (in %)	1	2	3	4	5	6	7	8	9	10	11
1289	Moraceae	<i>Ficus oleifolia</i> King subsp. <i>intermedia</i> Corner C.C.Berg	1	30.6	5.54	85	0	13	0	0	0	0	1	0	1	0
920	Magnoliaceae	<i>Magnolia liliifera</i> L. Baill. var. <i>obovata</i>	1	30.4	27.68	35	9	14	0	0	1	0	14	5	17	5
568	Fagaceae	<i>Lithocarpus hatusimae</i> Soepadmo	1	30.2	8.3	67	0	16	0	0	0	0	0	0	4	13
1439	Orchidaceae	<i>Trichostema ferox</i> Blume	1	30.2	28.28	33	1	30	0	0	14	2	7	0	9	5
260	Styracaceae	<i>Bruinsmia styracoides</i> Boerl. & Koord.	1	29.8	16.94	45	0	19	0	0	6	5	5	0	10	11
645	Symplocaceae	<i>Symplocos henschelii</i> Moric. Benth. ex C.B.Clarke subsp. <i>henschelii</i>	1	29.6	17.79	42	23	5	0	0	7	0	0	0	19	3
1349	Orchidaceae	<i>Bulbophyllum mutabile</i> Blume Lindl.	1	29.3	4.41	97	0	0	0	0	0	0	3	0	0	0
1012	Rosaceae	<i>Rubus rosaeifolius</i> Sm.	1	29.2	19.69	42	0	8	0	1	0	4	1	0	8	36
1408	Orchidaceae	<i>Eria hyacinthoides</i> Blume Lindl.	1	29.2	13.29	53	0	6	0	0	0	2	2	0	11	25
256	Myricaceae	<i>Myrica javanica</i> Blume	1	28.8	25.46	34	4	33	0	0	8	1	8	0	8	3
435	Celastraceae	<i>Salacia laurifolia</i> Stafp	1	28.7	19.44	40	0	25	0	0	0	0	18	13	3	1
499	Ericaceae	<i>Diplycosia barbigera</i> Sleumer	1	28.7	18.62	38	29	17	0	0	0	0	0	0	10	6
124	Euphorbiaceae	<i>Hamalanthus caloneurus</i> Airy Shaw	1	28.5	21.22	40	0	17	0	0	1	0	12	0	11	19
652	Symplocaceae	<i>Symplocos laeteviridis</i> Stafp var. <i>laeteviridis</i>	1	28.5	27.12	34	8	13	0	10	3	1	4	0	22	5
470	Ericaceae	<i>Rhododendron polyanthemum</i> Sleumer	1	28.3	33.38	29	14	27	0	0	8	1	12	1	4	5
1197	Myristicaceae	<i>Horsfieldia montana</i> Airy Shaw	1	27.9	4.29	94	0	6	0	0	0	0	0	0	0	0
1397	Orchidaceae	<i>Dendrochilum gibbsiae</i> Rolfe	1	27.9	17.56	39	5	39	0	0	6	0	0	0	5	6
91	Euphorbiaceae	<i>Aporosa lagenocarpa</i> Airy Shaw	1	27.5	8.01	65	0	12	0	0	9	0	0	0	13	0
1401	Orchidaceae	<i>Dendrochilum muluense</i> J.J.Wood	1	27.5	3.95	99	0	0	0	0	0	0	0	0	0	1
655	Symplocaceae	<i>Symplocos laeteviridis</i> Stafp var. <i>velutinosus</i> Noot.	1	27.4	4.33	93	0	6	0	0	0	0	0	0	0	1
1413	Orchidaceae	<i>Eria nutans</i> Lindl.	1	27.1	19.19	41	7	5	0	1	0	7	2	1	15	20
442	Ericaceae	<i>Diplycosia cinnamomifolia</i> Stafp	1	26.9	4.23	94	0	1	0	0	0	0	0	0	1	3
1339	Orchidaceae	<i>Bulbophyllum coriaceum</i> Ridl.	1	26.8	16.79	45	0	12	0	0	0	0	14	0	14	14
82	Euphorbiaceae	<i>Aporosa basilanensis</i> Merr.	1	26.7	18.21	42	11	4	0	0	2	0	0	1	19	22
484	Ericaceae	<i>Vaccinium laurifolium</i> Blume Miq. var. <i>sarawakense</i> Merr. Sleumer	1	26.6	21.22	37	0	24	0	0	3	0	0	12	23	0
1335	Orchidaceae	<i>Bulbophyllum caudatisepalum</i> Ames & C.Schweinf.	1	26.4	14.92	43	2	38	0	0	4	0	8	0	4	1
961	Sabiaceae	<i>Meliosma pinnata</i> Roxb. Maxim. subsp. <i>ridleyi</i> King Beusekom	1	26.3	24.27	33	15	15	0	0	12	2	3	1	17	2
659	Symplocaceae	<i>Symplocos pendula</i> Wight var. <i>hirtistylis</i> Clarke Noot.	1	25.8	10.26	55	0	17	0	0	4	1	1	1	19	2
907	Menispermaceae	<i>Stephania reticulata</i> Forman	1	25.8	16.4	44	0	5	0	0	0	2	2	0	13	33
928	Podocarpaceae	<i>Phyllodendron hypophyllum</i> Hook.f.	1	25.8	29.87	29	20	22	0	0	11	1	8	0	6	4
417	Celastraceae	<i>Celastrus monospermoides</i> Loes.	1	25.6	18.08	40	0	20	0	0	9	0	1	1	28	1
441	Ericaceae	<i>Diplycosia ciliolata</i> Hook.f.	1	25.5	12.2	53	0	6	0	0	0	0	18	0	13	10
911	Araucariaceae	<i>Agathis orbicula</i> de Laub.	1	25.5	21.04	37	13	4	0	2	0	7	1	0	1	

Table S5.1. (continued).

sp#	Family	Species	Cluster Group	IndVal	Area (in %)	1	2	3	4	5	6	7	8	9	10	11
1318	Orchidaceae	<i>Agrostophyllum glumaceum</i> Hook.f.	1	23	26.23	32	16	1	0	0	1	1	0	0	30	19
318	Burseraceae	<i>Santiria grandiflora</i> Kalkman	1	22	18.76	37	12	3	0	0	0	5	1	0	20	22
1089	Meliaceae	<i>Dysoxylum macrocarpum</i> Blume	1	22	22.65	32	23	4	0	9	0	2	0	2	17	11
651	Symplocaceae	<i>Symplocos laeteviridis</i> Stapf var. <i>kinabaluensis</i> Heine Noot.	1	21.8	4.23	85	0	1	0	0	0	0	11	0	2	0
418	Celastraceae	<i>Euonymus castaneifolius</i> Ridl.	1	21.7	38.04	24	22	7	0	0	6	1	6	10	16	7
469	Ericaceae	<i>Rhododendron pneumonantherum</i> Sleumer	1	21.7	3.29	95	0	4	0	0	0	0	0	0	0	0
1374	Orchidaceae	<i>Coelogyne kinabaluensis</i> Ames & C.Schweinf.	1	21.7	3.37	94	0	5	0	0	0	0	1	0	0	1
949	Polygalaceae	<i>Xanthophyllum purpureum</i> Ridl.	1	21.5	29.94	29	9	2	1	0	1	3	11	2	28	13
1369	Orchidaceae	<i>Coelogyne craticulaelabris</i> Carr	1	21.5	22.75	33	0	20	0	0	1	0	22	11	9	6
1061	Meliaceae	<i>Aglaia monozyga</i> Harms	1	21.3	15.55	42	0	3	0	0	0	4	2	0	36	13
235	Dilleniaceae	<i>Saurauia tristyla</i> DC.	1	21.2	10.85	50	0	2	0	11	0	0	9	0	15	13
1005	Rosaceae	<i>Prunus spicata</i> Kalkman	1	21.2	19.77	35	0	22	0	0	1	0	20	2	16	4
1183	Loranthaceae	<i>Taxillus chinensis</i> DC. Danser	1	21	13.02	45	0	6	0	0	0	0	11	4	14	20
1327	Orchidaceae	<i>Appendicula torta</i> Blume	1	20.7	18.4	35	2	13	0	9	14	0	7	0	13	7
1370	Orchidaceae	<i>Coelogyne cuprea</i> H.Wendl. & Kraenzl.	1	20.7	5.7	71	0	1	0	0	0	0	12	0	12	5
637	Symplocaceae	<i>Symplocos adenophylla</i> Wall. & G.Don	1	20.4	8.88	53	0	9	1	1	5	0	8	4	19	0
551	Fagaceae	<i>Castanopsis javanica</i> Blume A.DC.	1	20.3	15.75	40	1	1	0	0	0	0	0	13	20	25
476	Ericaceae	<i>Rhododendron stenophyllum</i> Hook.f.	1	20.2	5.23	72	0	2	0	0	0	0	0	0	24	1
450	Ericaceae	<i>Diplycosia rufo</i> Stapf	1	20.1	29.63	28	0	12	0	11	1	0	15	1	20	13
1390	Orchidaceae	<i>Dendrobium cymbulipes</i> J.J.Sm.	1	20	2.86	100	0	0	0	0	0	0	0	0	0	0
885	Liliaceae	<i>Pleomele angustifolia</i> Roxb. N.E.Br.	1	19.8	16.24	39	0	5	0	0	1	0	1	11	35	8
710	Labiatae	<i>Paraphlomis javanica</i> Blume Prain	1	19.7	12.87	45	0	1	0	1	0	1	9	0	11	31
276	Thymelaeaceae	<i>Wikstroemia androaenifolia</i> Decne.	1	19.4	21.67	32	0	14	0	0	9	1	8	0	23	13
1373	Orchidaceae	<i>Coelogyne incrassata</i> Blume Lindl.	1	19.4	14.61	39	0	24	1	0	6	0	13	0	14	2
869	Araliaceae	<i>Arthrophyllum collinum</i> Philipson	1	19.2	10.47	48	0	10	0	0	0	0	1	0	30	11
711	Labiatae	<i>Plectranthus galatus</i> Vahl	1	19	4.45	76	0	6	0	0	0	0	0	0	18	0
930	Podocarpaceae	<i>Podocarpus laubenfelsii</i> Tieng	1	19	15.53	39	0	4	0	2	0	1	6	0	12	36
648	Symplocaceae	<i>Symplocos johniana</i> Stapf	1	18.8	2.86	96	0	0	0	0	0	0	0	0	4	0
544	Violaceae	<i>Viola sumatrana</i> Miq.	1	18.6	10.2	49	0	3	0	0	0	0	21	0	14	12
1205	Myristicaceae	<i>Horsfieldia xanthina</i> Airy Shaw subsp. <i>xanthina</i>	1	18.6	18.62	32	26	5	0	0	0	2	2	1	19	14
1291	Moraceae	<i>Ficus parietalis</i> Blume	1	18.6	31.53	26	4	1	2	2	3	3	6	13	25	16
1340	Orchidaceae	<i>Bulbophyllum deltoideum</i> Ames & C.Schweinf.	1	18.4	4.99	65	0	28	0	0	1	0	4	0	0	1
161	Euphorbiaceae	<i>Mallotus lancifolius</i> Hook.f.	1	18.3	12.36	44	0	0	0	0	0	0	15	0	19	21
1238	Nepenthaceae	<i>Nepenthes tentaculata</i> Hook.f.	1	18.1	22.5	28	1	24	2	2	20	3	2	1	8	9
1406	Orchidaceae	<i>Eria farinosa</i> Ames & C.Schweinf.	1	18.1	3.07	91	0	1	0	0	0	0	6	0	0	2
1402	Orchidaceae	<i>Dendrochilum oxylobum</i> Schltr.	1	18	17.38	35	11	1	0	0	0	4	3	2	15	30
1301	Moraceae	<i>Ficus setiflora</i> Stapf	1	17.8	3.84	79	0	7	0	0	0	0	14	0	0	0
281	Umbelliferae	<i>Hydrocotyle javanica</i> Thunb.	1	17.7	24.41	27	0	25	0	0	9	0	5	12	18	3
1325	Orchidaceae	<i>Appendicula foliosa</i> Ames & Schltr.	1	17.6	12.39	42	0	1	0	0	0	0	9	15	26	7
1431	Orchidaceae	<i>Spathoglottis microchilina</i> Kraenzl.	1	17.6	10.9	46	0	0	0	0	0	0	1	0	30	23
1177	Loranthaceae	<i>Macrosolen flammeus</i> Danser	1	17.5	21.24	31	0	7	5	7	0	0	12	9	21	8
112	Euphorbiaceae	<i>Bridelia glauca</i> Blume var. <i>sosopodanica</i> Airy Shaw S.Dressler	1	17.3	23.41	27	0	8	27	0	3	2	1	0	12	18
1421	Orchidaceae	<i>Oberonia affinis</i> Ames & C.Schweinf.	1	17.3	10.03	48	0	3	0	0	0	0	19	0	15	15
1180	Loranthaceae	<i>Macrosolen tubiflorus</i> Ridl. Danser	1	17.1	11.18	44	0	11	0	0	3	0	9	0	31	3
1430	Orchidaceae	<i>Podochilus tenuis</i> Lindl.	1	17.1	6.24	61	0	0	0	0	0	0	0	0	32	8
195	Caprifoliaceae	<i>Viburnum hispidulum</i> Kern	1	16.7	11.79	43	0	1	0	0	0	0	9	3	27	17
588	Cyperaceae	<i>Carex perakensis</i> C.B.Clarkie var. <i>borneensis</i> C.B.Clarkie Noot.	1	16.7	19	30	0	21	0	0	11	5	6	13	13	2
128	Euphorbiaceae	<i>Macaranga angulata</i> S.J.Davies	1	16.6	2.36	100	0	0	0	0	0	0	0	0	0	0
873	Araliaceae	<i>Schefflera avisensis</i> Harms	1	16.6	26.63	26	0	6	0	0	14	8	2	19	19	5
1352	Orchidaceae	<i>Bulbophyllum obtusum</i> Blume Lindl.	1	16.6	2.36	100	0	0	0	0	0	0	0	0	0	0
10	Annonaceae	<i>Goniothalamus clemensii</i> Bân	1	16.5	12.94	40	0	7	0	0	1	0	16	0	12	24
1070	Meliaceae	<i>Aglaia squamulosa</i> King	1	16.4	34.13	23	0	21	0	0	20	1	8	0	22	5
559	Fagaceae	<i>Lithocarpus clemantina</i> King ex Hook.f. A.Camus	1	16.3	8.58	48	0	9	0	0	0	0	1	12	30	0
1383	Orchidaceae	<i>Coelogyne venusta</i> Rolfe	1	16.3	2.6	92	0	8	0	0	0	0	0	0	0	0
1427	Orchidaceae	<i>Pholidota pectinata</i> Ames	1	16.3	2.33	99	0	0	0	0	0	0	0	0	0	1

Table S5.1. (continued).

sp#	Family	Species	Cluster Group	IndVal	Area (in %)	1	2	3	4	5	6	7	8	9	10	11
468	Ericaceae	<i>Rhododendron orbiculatum</i> Ridl.	1	16.2	9.92	39	34	15	0	0	7	0	0	0	5	1
924	Podocarpaceae	<i>Dacrycarpus imbricatus</i> Blume de Laub. var. <i>patulus</i> de Laub.	1	16.2	22.91	28	0	17	0	19	4	0	8	4	16	4
1316	Moraceae	<i>Streblus glaber</i> Merr. Corner	1	16.2	24.71	26	0	22	0	0	12	0	4	14	10	13
1317	Orchidaceae	<i>Adenoncos parviflora</i> Ridl.	1	16.1	10.07	46	0	0	0	0	0	0	3	0	19	32
1331	Orchidaceae	<i>Bulbophyllum acutum</i> J.J.Sm.	1	16.1	2.31	99	0	0	0	0	0	0	0	0	0	1
194	Caprifoliaceae	<i>Viburnum clemensae</i> Kern	1	16	2.38	97	0	1	0	0	0	0	0	0	2	0
644	Symplocaceae	<i>Symplocos fasciculata</i> Zoll.	1	15.9	57.83	17	14	5	0	2	5	10	6	12	16	13
657	Symplocaceae	<i>Symplocos ophirensis</i> C.B.Clarkie subsp. <i>cumingiana</i> Brand Noot.	1	15.8	5.35	63	0	1	0	0	0	0	0	0	36	0
579	Fagaceae	<i>Quercus argentata</i> Korth.	1	15.2	13.36	38	0	6	0	2	3	0	17	1	23	11
570	Fagaceae	<i>Lithocarpus lampadarii</i> Gamble A.Camus	1	15	4.73	64	0	6	0	0	3	0	0	0	26	1
191	Burmanniaceae	<i>Burmannia longifolia</i> Becc.	1	14.8	17.38	30	0	23	0	0	20	3	14	0	5	4
1382	Orchidaceae	<i>Coelogyne subintegra</i> J.J.Sm.	1	14.8	15.66	35	0	2	0	0	0	0	16	10	28	11
910	Araucariaceae	<i>Agathis lenticula</i> de Laub.	1	14.7	11.29	41	0	2	0	1	0	0	2	0	14	0
1243	Moraceae	<i>Artocarpus excelsus</i> F.M.Jarrett	1	14.7	13.12	38	0	4	0	1	0	0	7	0	14	36
444	Ericaceae	<i>Diplycosia commutata</i> Sleumer	1	14.4	2.09	99	0	0	0	0	0	0	1	0	0	1
460	Ericaceae	<i>Rhododendron fallacinum</i> Sleumer	1	14.3	2.94	82	0	0	0	0	0	0	0	0	6	12
811	Dipterocarpaceae	<i>Shorea monticola</i> P.S.Ashton	1	14.1	11.55	35	7	21	0	0	31	0	0	0	7	0
1387	Orchidaceae	<i>Dendrobium bifarium</i> Lindl. ex Hook.f.	1	14	5.14	60	0	0	0	0	0	0	0	0	4	36
149	Euphorbiaceae	<i>Macaranga rostrata</i> Heine	1	13.9	6.7	51	0	4	0	0	3	2	1	0	17	21
446	Ericaceae	<i>Diplycosia heterophylla</i> Blume var. <i>latifolia</i> Blume Sleumer	1	13.9	14.78	31	17	5	0	24	8	0	1	3	12	0
516	Haloragaceae	<i>Haloragis micrantha</i> Thunb. R.Br. ex Siebold & Zucc.	1	13.9	12.91	37	0	2	0	0	0	0	12	7	24	18
146	Euphorbiaceae	<i>Macaranga petanostyla</</i>														

Table S5.1. (continued).

sp#	Family	Species	Cluster Group	IndVal	Area (in %)	1	2	3	4	5	6	7	8	9	10	11
1282	Moraceae	<i>Ficus leptocalama</i> Corner	1	10.6	4.24	57	0	0	0	0	0	0	0	0	9	33
1407	Orchidaceae	<i>Eria floribunda</i> Lindl.	1	10.6	3.57	64	0	0	0	0	0	0	11	0	2	23
1306	Moraceae	<i>Ficus tarennifolia</i> Corner	1	10.5	12.63	33	0	1	0	0	0	1	25	0	19	21
1435	Orchidaceae	<i>Trichoglottis tinekeae</i> Schuit.	1	10.5	1.48	100	0	0	0	0	0	0	0	0	0	0
580	Fagaceae	<i>Quercus lineata</i> Blume	1	10.3	11.34	32	0	15	0	9	1	0	7	11	19	7
445	Ericaceae	<i>Diplycosia fimbriata</i> Sleumer	1	10.2	1.68	93	0	0	0	0	0	0	4	0	3	0
1332	Orchidaceae	<i>Bulbophyllum aedium</i> Ames	1	10.1	1.43	100	0	0	0	0	0	0	0	0	0	0
899	Chloranthaceae	<i>Ascarina philippinensis</i> C.B.Rob.	1	9.8	1.5	96	0	0	0	0	0	0	0	0	4	0
192	Caprifoliaceae	<i>Sambucus javanica</i> Reinw. ex Blume	1	9.4	1.6	90	0	0	0	0	0	0	0	0	0	10
223	Dilleniaceae	<i>Saurauia actinidiifolia</i> Stapf	1	9.3	6.27	44	0	0	0	0	0	0	0	0	23	33
653	Symplocaceae	<i>Symplocos laeteviridis</i> Stapf var. <i>mjöbergii</i> Merr. Noot.	1	9.3	1.36	98	0	2	0	0	0	0	0	0	0	0
1343	Orchidaceae	<i>Bulbophyllum fulvibulbum</i> J.J.Verm.	1	9.2	1.33	99	0	0	0	0	0	0	0	0	0	1
1380	Orchidaceae	<i>Coelogyne radioferens</i> Ames & C.Schweinf.	1	9.2	1.63	89	0	0	0	0	0	0	0	0	5	6
282	Umbelliferae	<i>Sanicula elata</i> Buch.-Ham. ex D.Don	1	9	1.29	99	0	0	0	0	0	0	0	0	0	1
242	Flagellariaceae	<i>Hanguana major</i> Airy Shaw	1	8.9	7.51	40	0	0	0	0	0	0	20	0	18	21
607	Cyperaceae	<i>Scirpus subcapitatus</i> Thwaites	1	8.9	4.71	51	0	0	0	0	0	0	12	0	26	12
964	Sabiaceae	<i>Sabia parviflora</i> Wall. subsp. <i>parviflora</i>	1	8.8	7.5	40	0	0	0	0	0	0	21	0	19	21
465	Ericaceae	<i>Rhododendron maxwellii</i> Gibbs	1	8.7	1.45	92	0	0	0	0	0	0	1	0	0	8
457	Ericaceae	<i>Rhododendron buxoides</i> Sleumer	1	8.5	1.84	79	0	0	0	0	0	0	0	0	1	19
1174	Loranthaceae	<i>Lepidaria sabaensis</i> Stapf Tiegh.	1	8.5	12.99	29	0	0	0	0	0	0	15	9	25	22
1412	Orchidaceae	<i>Eria major</i> Ridl. ex Stapf	1	8.5	6.95	40	0	0	0	0	0	0	19	0	20	20
392	Proteaceae	<i>Helicia pterygota</i> Sleumer	1	8.4	4.09	53	0	0	0	0	0	0	1	0	35	11
867	Araliaceae	<i>Aralia merrillii</i> C.B.Shang	1	8.4	7.6	39	0	0	0	0	0	0	21	0	18	22
443	Ericaceae	<i>Diplycosia clementium</i> Sleumer	1	8.3	1.4	91	0	0	0	0	0	0	1	0	0	8
452	Ericaceae	<i>Diplycosia urceolata</i> Stapf	1	8.3	10.45	33	0	0	0	2	0	0	29	2	25	10
997	Rosaceae	<i>Photinia davidiana</i> Decne. Cardot	1	8.3	1.4	91	0	0	0	0	0	0	1	0	0	8
1411	Orchidaceae	<i>Eria magnicallosa</i> Ames & C.Schweinf.	1	8.3	1.49	88	0	0	0	0	0	0	1	0	0	11
453	Ericaceae	<i>Gaultheria borneensis</i> Stapf	1	8.2	1.31	94	0	0	0	0	0	0	1	0	0	5
475	Ericaceae	<i>Rhododendron rugosum</i> Low ex Hook.f.	1	8.2	1.17	100	0	0	0	0	0	0	0	0	0	0
483	Ericaceae	<i>Vaccinium cordifolium</i> Stapf	1	8.2	1.31	94	0	0	0	0	0	0	1	0	0	5
933	Podocarpaceae	<i>Prumnopitys amarus</i> Blume de Laub.	1	8.2	1.31	94	0	0	0	0	0	0	1	0	0	5
283	Umbelliferae	<i>Trachymene saniculaefolia</i> Stapf	1	7.9	1.12	100	0	0	0	0	0	0	0	0	0	0
411	Campanulaceae	<i>Lobelia borneensis</i> Hemsl. Moeliono	1	7.9	1.43	88	0	0	0	0	0	0	1	0	0	12
474	Ericaceae	<i>Rhododendron retivenium</i> Sleumer	1	7.9	1.12	100	0	0	0	0	0	0	0	0	0	0
611	Balanophoraceae	<i>Balanophora lowii</i> Hook.f.	1	7.9	1.2	97	0	0	0	0	0	0	0	0	0	3
1355	Orchidaceae	<i>Bulbophyllum puntjakense</i> J.J.Sm.	1	7.9	1.12	100	0	0	0	0	0	0	0	0	0	0
251	Gnetaceae	<i>Gnetum latifolium</i> Blume var. <i>minus</i> Fowx. Markgr.	1	7.8	4.93	45	0	0	0	0	0	0	0	0	14	40
440	Ericaceae	<i>Diplycosia chrysothrix</i> Stapf	1	7.8	7.1	38	0	0	0	0	0	0	0	0	29	33
640	Symplocaceae	<i>Symplocos buxifolia</i> Stapf	1	7.7	1.1	100	0	0	0	0	0	0	0	0	0	0
1434	Orchidaceae	<i>Thrixspermum triangulare</i> Ames & C.Schweinf.	1	7.5	3.03	57	0	0	0	0	0	0	0	0	9	34
1366	Orchidaceae	<i>Cleisocentron merrillianum</i> Ames Christenson	1	7.1	2.73	58	0	0	0	0	0	0	0	0	0	42
1436	Orchidaceae	<i>Trichotomia aporina</i> Hook.f. Kraenzl.	1	7	1.95	69	0	0	0	0	0	0	0	0	1	30
472	Ericaceae	<i>Rhododendron quadrasianum</i> S.Vidal var. <i>cuneifolium</i> Stapf Cop. f.	1	6.9	1.28	86	0	0	0	0	0	0	0	0	0	14
1336	Orchidaceae	<i>Bulbophyllum ceratostylis</i> J.J.Sm.	1	6.9	0.98	100	0	0	0	0	0	0	0	0	0	0
627	Bignoniaceae	<i>Radermachera ramiflora</i> Steenis	1	6.8	12.02	27	0	0	0	0	0	2	24	2	18	27
1379	Orchidaceae	<i>Coelogyne plicatissima</i> Ames & C.Schweinf.	1	6.6	2.68	57	0	0	0	0	0	0	0	0	0	43
569	Fagaceae	<i>Lithocarpus havilandii</i> Stapf Barnett	1	6.5	0.92	100	0	0	0	0	0	0	0	0	0	0
960	Sabiaceae	<i>Meliosma lepidota</i> Blume subsp. <i>kinabaluensis</i> Beusekom	1	6.5	3.28	52	0	0	0	0	0	0	4	0	32	13
901	Elaeagnaceae	<i>Elaeagnus triflora</i> Roxb.	1	6.3	1.57	74	0	0	0	0	0	0	0	0	26	0
304	Burseraceae	<i>Canarium pilosum</i> Benth. subsp. <i>borneensis</i> Leenh.	1	6.2	3.92	46	0	0	0	0	0	0	12	0	34	8
916	Magnoliaceae	<i>Magnolia carsonii</i> Dandy ex Noot. var. <i>carsonii</i>	1	6.2	0.87	100	0	0	0	0	0	0	0	0	0	0
1350	Orchidaceae	<i>Bulbophyllum mutabile</i> Blume Lindl. var. <i>obesum</i> J.J.Verm.	1	6	0.92	95	0	0	0	0	0	0	0	0	0	5
1152	Boraginaceae	<i>Cordia dichotoma</i> G.Forst.	1	5.8	2.51	55	0	0	0	12	0	0	0	0	33	0

Table S5.1. (continued).

sp#	Family	Species	Cluster Group	IndVal	Area (in %)	1	2	3	4	5	6	7	8	9	10	11
1367	Orchidaceae	<i>Coelogyne clemensii</i> Ames & C.Schweinf.	1	5.8	1.14	83	0	0	0	0	0	0	0	0	0	0
1269	Moraceae	<i>Ficus endospermifolia</i> Corner	1	5.7	0.8	100	0	0	0	0	0	0	0	0	0	0
918	Magnoliaceae	<i>Magnolia lasia</i> Noot.	1	5.4	1.29	75	0	0	0	0	0	0	0	0	4	21
1346	Orchidaceae	<i>Bulbophyllum microglossum</i> Ridl.	1	5.3	0.75	100	0	0	0	0	0	0	0	0	0	0
1326	Orchidaceae	<i>Appendicula minutiflora</i> Ames & Schweinf.	1	4.9	0.72	98	0	0	0	0	0	0	0	0	0	2
280	Umbelliferae	<i>Eryngium foetidum</i> L.	1	3.9	0.55	100	0	0	0	0	0	0	0	0	0	0
1164	Loranthaceae	<i>Helixanthera apodanthes</i> Danser	1	3.8	1.56	57	0	0	0	0	0	0	0	0	26	17
1393	Orchidaceae	<i>Dendrobium kurashigei</i> Yukawa	1	2.8	0.4	100	0	0	0	0	0	0	0	0	0	0
922	Magnoliaceae	<i>Magnolia persuaevolens</i> Dandy subsp. <i>rigida</i> Noot.	1	2.6	0.37	100	0	0	0	0	0	0	0	0	0	0
1362	Orchidaceae	<i>Calanthe sylvatica</i> Thouars Lindl.	1	2.5	0.35	100	0	0	0	0	0	0	0	0	0	0
96	Euphorbiaceae	<i>Aporosa rhacostyla</i> Airy Shaw	2	61.5	9.23	6	63	16	0	0	7	1	1	0	6	0
792	Dipterocarpaceae	<i>Shorea flaviflora</i> G.H.S.Wood ex P.S.Ashton	2	56.7	12.3	14	58	6	0	2	7	0	1	0	10	1
833	Dipterocarpaceae	<i>Shorea sagittata</i> Ashton	2	56.1	12.21	5	56	12	0	3	5	1	3	0	13	1
45	Annonaceae	<i>Polyalthia hookeriana</i> King	2	53	11.22	3	59	2	0	2	2	0	0	5	22	4
807	Dipterocarpaceae	<i>Shorea macroptera</i> Dyer subsp. <i>bailloni</i>	2	52.6	11.48	0	55	7	0	7	14	1	0	3	14	0
1223	Myristicaceae	<i>Knema riangensis</i> W.J.de Wilde	2	50	15.13	11	50	14	0	0	4	0	12	0	9	0
878	Araliaceae	<i>Schefflera multicaucata</i> Frodin	2	48	14.22	7	48	20	0	0	9	2	0	1	13	0
14	Annonaceae	<i>Goniothalamus uvaroides</i> King	2	47.9	10.23	1	57	9	0	0	7	2	4	1	19	1
1260	Moraceae	<i>Ficus bruneiensis</i> Corner	2	46.5	14.82	8	46	22	0	0	8	1	1	0	12	0
680	Anacardiaceae	<i>Gluta laxiflora</i> Ridl.	2	45.9	15.19	6	49	7	0	2	2	3	5	0	22	3
848	Dipterocarpaceae	<i>Vatica coriacea</i> P.S.Ashton	2	45.6	15.03	2	46	6	18	0	5	1	1	0	18	2
369	Flacourtiaceae	<i>Hydnocarpus sumatrana</i> Miq. Koord. var. <i>pentagyna</i> Slooten Sleumer	2	44.2	18.62	8	44	7	0	1	9	1	5	1	23	1
729	Dipterocarpaceae	<i>Dipterocarpus nudus</i> Vesque	2	44	7.85	0	61	0	0	21	1	0	0	3	14	0
800	Dipterocarpaceae	<i>Shorea iliasii</i> P.S.Ashton	2	43.8	15.48	0	46	3	0	9	12	6	2	3	19	0
600	Cyperaceae	<i>Mapania cuspidata</i> Miq. Uittien var. <i>cuspidata</i>	2	43.2	17.4	0	46	2	0	0	11	1	14	0	24	1
374	Flacourtiaceae	<i>Ryparosa glauca</i> Ridl.	2	42.6	16.21	7	43	21	0	0	14	2	1	3	10	0
98	Euphorbiaceae	<i>Aporosa stenostachys</i> Airy Shaw	2	42.1	16.31	0	44	3	0	8	8	6	2	3	21	3
127	Euphorbiaceae	<i>Macaranga aethadenia</i> Airy Shaw	2	41.6	14.88	1	47	4	0	0	18	0	10	0	16	4
743	Dipterocarpaceae	<i>Dryobalanops oblongifolia</i> Dyer	2	41.5	15.75	5	41	24	0	1	12	7	1	2	7	0
455	Ericaceae	<i>Rhododendron brookeanum</i> Lowe & Lindl. var. <i>brookeanum</i>	2	40.5	20.42	23	42	3	0	0	9	0	0	0	22	1
1011	Rosaceae	<i>Rubus moluccanus</i> L. var. <i>discolor</i> Blume Kalkman	2	39.9	19.04	19	43	2	0	0	7	0	1	2	24	1
1396	Orchidaceae	<i>Dendrobium secundum</i> Blume Lindl.	2	39.5	13.86	12	48	8	0	0	0	0	4	6	20	1
272	Thymelaeaceae	<i>Gonystylus nervosus</i> Airy Shaw	2	39.4	20.81	13	41	4	0	6	2	0	5	0	25	4
813	Dipterocarpaceae	<i>Shorea myrionerva</i> Symington	2	39.3	19.42	13	39	20	0	0	7	2	0	1	13	5
832	Dipterocarpaceae	<i>Shorea rubra</i> P.S.Ashton	2	38.4	11											

Table S5.1. (continued).

sp#	Family	Species	Cluster Group	IndVal	Area (in %)	1	2	3	4	5	6	7	8	9	10	11
860	Dipterocarpaceae	<i>Vatica odorata</i> Griff. Symington subsp. <i>mindanensis</i> Foxw. P.S.Ashton	2	33.7	26.49	16	34	5	0	8	10	0	0	1	1	8
782	Dipterocarpaceae	<i>Shorea crassa</i> P.S.Ashton	2	33.2	18.57	0	38	4	5	0	15	3	9	0	24	1
226	Dilleniaceae	<i>Saurauia amoena</i> Stapf	2	33	14.96	22	44	5	0	0	8	0	0	3	16	3
872	Araliaceae	<i>Schefflera avenis</i> Miq. Harms	2	33	24.71	18	33	10	0	21	4	0	0	1	12	0
1284	Moraceae	<i>Ficus macrostyla</i> Corner	2	33	17.19	0	40	0	0	0	19	4	14	4	18	1
364	Flacourtiaceae	<i>Hydnocarpus calophyllus</i> Ridl. Sleumer	2	32.6	25.21	6	33	15	0	0	19	1	4	0	19	4
44	Annonaceae	<i>Polyalthia flagellaris</i> Becc. Airy Shaw	2	32.3	25.87	5	33	5	0	0	25	3	3	0	22	4
788	Dipterocarpaceae	<i>Shorea faguetooides</i> P.S.Ashton	2	32	25.45	5	32	13	0	0	16	6	2	1	22	3
423	Celastraceae	<i>Lophopetalum glabrum</i> Ding Hou	2	31.9	24.44	11	34	4	0	0	14	1	4	0	24	7
79	Euphorbiaceae	<i>Antidesma riparium</i> Airy Shaw	2	31.5	14.17	15	45	1	0	0	1	0	0	3	28	7
1319	Orchidaceae	<i>Agrostophyllum trifidum</i> Schltr.	2	31.4	20.02	20	36	12	0	0	4	7	2	2	9	9
556	Fagaceae	<i>Lithocarpus bennettii</i> Miq. Rehder	2	31.3	22.28	21	37	5	0	0	1	0	6	1	30	0
352	Flacourtiaceae	<i>Casearia hosei</i> Merr.	2	31.1	16.08	21	41	5	0	0	0	0	1	8	15	10
1221	Myristicaceae	<i>Knema percoriacea</i> J.Sinclair f. <i>sarawakensis</i> W.J.de Wilde	2	30.9	25.96	2	32	1	0	9	18	5	1	1	29	3
224	Dilleniaceae	<i>Saurauia acuminata</i> Merr.	2	30.8	22.79	24	36	1	0	0	3	0	0	1	32	3
40	Annonaceae	<i>Polyalthia cauliflora</i> Hook.f. & Thomson var. <i>cauliflora</i>	2	30.7	26.55	15	31	17	0	4	9	2	0	4	13	4
1297	Moraceae	<i>Ficus rubroscuspida</i> Corner	2	30.6	26.28	14	33	3	0	7	13	0	1	2	28	0
1290	Moraceae	<i>Ficus oleifolia</i> King subsp. <i>oleifolia</i>	2	30.3	22.42	23	34	19	0	0	11	0	1	0	10	2
371	Flacourtiaceae	<i>Hydnocarpus woodii</i> Merr.	2	30.2	23.08	8	34	1	0	2	17	1	0	5	28	4
1159	Loranthaceae	<i>Barathranthus axanthus</i> Korth. Miq.	2	29.9	22.57	2	32	10	4	11	14	2	2	10	14	0
97	Euphorbiaceae	<i>Aporosa sarawakensis</i> Schot	2	29.8	27.45	10	31	12	1	7	12	2	9	1	16	0
410	Scyphostegiaceae	<i>Scyphostegia borneensis</i> Stapf	2	29.8	21.52	29	36	5	0	0	1	0	0	5	20	4
76	Euphorbiaceae	<i>Antidesma pendulum</i> Hook.f.	2	29.3	21.15	0	36	0	0	0	12	1	19	9	22	1
890	Liliaceae	<i>Smilax odoratissima</i> Blume	2	29	20.73	21	36	2	0	1	12	4	4	0	11	9
1036	Sapindaceae	<i>Nephelium daedaleum</i> Radlk.	2	28.9	30.14	1	29	1	0	12	15	3	12	4	21	2
790	Dipterocarpaceae	<i>Shorea fallax</i> Meijer	2	28.2	31.49	16	30	1	0	3	0	0	8	4	27	11
482	Ericaceae	<i>Vaccinium clementis</i> Merr.	2	27.9	23.85	27	33	11	0	1	9	1	0	1	13	5
777	Dipterocarpaceae	<i>Shorea biawak</i> P.S.Ashton	2	27.8	16.58	0	37	1	2	7	8	10	6	3	24	3
954	Polygalaceae	<i>Xanthophyllum subcoriaceum</i> Chodat Meijden	2	27.4	27.13	21	31	4	0	0	6	3	7	3	17	8
1403	Orchidaceae	<i>Dendrochilum pallidiflavens</i> Blume var. <i>pallidiflavens</i>	2	27.4	18.22	32	38	3	0	2	3	0	1	2	8	12
108	Euphorbiaceae	<i>Baccaurea pubera</i> Miq. Müll.Arg.	2	27.2	25.71	13	32	4	0	2	7	1	10	5	22	5
826	Dipterocarpaceae	<i>Shorea patiensis</i> P.S.Ashton	2	27	26.76	14	31	0	0	0	2	8	3	1	18	22
187	Euphorbiaceae	<i>Trigonoptera malayana</i> Hook.f.	2	26.8	35.27	13	28	1	0	3	4	0	11	6	26	9
456	Ericaceae	<i>Rhododendron Brookeanum</i> Lowe & Lindl. var. <i>gracile</i> Low ex Lindl. Sleumer	2	26.7	32.58	11	27	11	0	0	13	2	3	5	20	9
317	Burseraceae	<i>Santiria apiculata</i> A.W.Benn. var. <i>apiculata</i>	2	26.5	27.21	14	31	1	0	0	6	0	3	6	30	9
1086	Meliaceae	<i>Dysoxylum cauliflorum</i> Hiern	2	26.5	30.72	16	29	4	0	1	8	1	8	1	28	3
132	Euphorbiaceae	<i>Macaranga brevipetiolata</i> Airy Shaw	2	26.4	34.67	13	27	3	0	9	15	1	9	0	20	2
232	Dilleniaceae	<i>Saurauia myrmecoides</i> Merr.	2	26.4	11.79	2	41	9	0	0	31	2	0	1	15	0
871	Araliaceae	<i>Osmoxylon borneense</i> Seem.	2	26.3	33.3	17	27	14	0	0	14	2	6	0	15	4
562	Fagaceae	<i>Lithocarpus cooperi</i> Blanco Rehder	2	26.2	35.61	18	26	9	0	9	7	0	2	3	23	2
228	Dilleniaceae	<i>Saurauia glabra</i> Merr.	2	26.1	32.18	11	26	14	0	7	18	3	1	2	18	1
179	Euphorbiaceae	<i>Pimelodendron griffithianum</i> Müll. Arg. Benth.	2	25.9	33.73	16	27	2	0	3	4	5	2	4	26	11
311	Burseraceae	<i>Dacryodes rostrata</i> Blume H.J.Lam f. <i>cuspidata</i> H.J.Lam	2	25.8	22.08	10	33	2	0	0	0	0	7	8	29	11
540	Violaceae	<i>Rinorea bengalensis</i> Wall. Kuntze	2	25.8	19.32	10	35	0	0	0	10	0	0	3	35	6
576	Fagaceae	<i>Lithocarpus pusillus</i> Soepadmo	2	25.8	21.21	20	34	1	0	9	0	1	3	4	27	2
169	Euphorbiaceae	<i>Mallotus wrayi</i> King ex Hook.f.	2	25.3	37.76	17	25	8	0	0	7	2	6	5	23	7
1248	Moraceae	<i>Artocarpus odoratissimus</i> Blanco	2	25.2	37.57	10	25	7	0	0	2	4	6	8	21	17
531	Ochnaceae	<i>Sauvagesia serrata</i> Korth. Sastre	2	24.9	32.9	5	25	13	4	1	19	3	8	2	18	2
293	Dilleniaceae	<i>Saurauia planchonii</i> Hook.f.	2	24.5	13.2	0	39	0	0	0	19	0	0	11	31	0
793	Dipterocarpaceae	<i>Shorea foxworthyi</i> Symington	2	24.5	9.12	0	48	0	0	0	6	3	5	0	38	0
268	Thymelaeaceae	<i>Gonystylus forbesii</i> Gilg	2	24.3	30.45	10	27	4	1	2	1	6	1	8	25	15
432	Celastraceae	<i>Perrottetia alpestris</i> Blume Loes. subsp. <i>philippinensis</i> Vidal Ding Hou	2	24.3	16.58	30	36	7	0	0	18	0	0	0	9	0
963	Sabiaceae	<i>Meliosma sumatrana</i> Jack Walp.	2	24.2	38.53	20	25	6	0	1	6	2	9	3	24	5

Table S5.1. (continued).

sp#	Family	Species	Cluster Group	IndVal	Area (in %)	1	2	3	4	5	6	7	8	9	10	11
733	Dipterocarpaceae	<i>Dipterocarpus rigidus</i> Ridl.	2	24.1	12.71	0	38	0	12	8	4	2	0	4	27	4
754	Dipterocarpaceae	<i>Hopea latifolia</i> Symington	2	24.1	9.08	0	46	0	0	16	4	0	1	3	30	0
834	Dipterocarpaceae	<i>Shorea scaberrima</i> Burck	2	24.1	22.08	4	31	1	2	8	18	6	2	4	26	0
478	Ericaceae	<i>Vaccinium bancaum</i> Miq.	2	24	25.03	16	30	1	3	5	8	1	4	1	25	6
751	Dipterocarpaceae	<i>Hopea fluvialis</i> P.S.Ashton	2	23.8	12.24	13	42	0	0	0	0	0	2	2	38	3
565	Fagaceae	<i>Lithocarpus ewyckii</i> Korth. Rehder	2	23.7	40.03	17	24	7	0	0	20	1	1	1	21	9
730	Dipterocarpaceae	<i>Dipterocarpus oblongifolius</i> Blume	2	23.7	39.77	17	24	7	0	3	8	4	8	5	19	6
92	Euphorbiaceae	<i>Aporosa lunata</i> Miq. Kurz	2	23.3	27.7	16	28	0	0	19	0	0	1	1	22	12
362	Flacourtiaceae	<i>Hydnocarpus anomalus</i> Merr. Sleumer	2	22.9	28.93	23	28	3	0	0	0	1	2	8	20	15
787	Dipterocarpaceae	<i>Shorea faguetoiana</i> Heim	2	22.8	39.69	8	23	5	0	4	5	8	6	5	22	14
370	Flacourtiaceae	<i>Hydnocarpus tenuipetala</i> Sleumer	2	22.7	2.5	0	76	0	0	0	0	0	0	0	23	0
55	Annonaceae	<i>Papoua piscarpa</i> Endl.	2	22.6	40.08	14	24	0	0	1	0	0	10	10	22	17
857	Dipterocarpaceae	<i>Vatica oblongifolia</i> Hook.f. subsp. <i>crassilobata</i> P.S.Ashton	2	22.6	17.16	21	35	4	0	11	0	1	1	0	20	6
1039	Sapindaceae	<i>Nephelium subfalcatum</i> Radlk.	2	22.6	3.85	0	65	0	0	3	0	1	1	0	29	0
1059	Meliaceae	<i>Aglaia macrocarpa</i> Miq. Pannell	2	22.6	27.81	15	28	2	0	5	0	1	9	5	15	21
1254	Moraceae	<i>Ficus androchaete</i> Corner	2	22.6	32.44	18	26	4	0	0	21	1	5	0	18	6
109	Euphorbiaceae	<i>Baccaurea sarawakensis</i> Pax & K.Hoffm.	2	22.5	40.52	9	23	9	0	8	14	3	8	4	21	2
99	Euphorbiaceae	<i>Aporosa subcaudata</i> Merr.	2	22.3	41.81	15	24	1	0	0	4	1	9	4	24	18
4	Annonaceae	<i>Cyathocalyx havilandii</i> Boerl.	2	22	38.53	3	22	7	2	0	12	15	4	8	18	10
537	Oxalidaceae	<i>Sarcotheca ochracea</i> Hallier f.	2	22	11.67	0	39	0	0	5	7	7	0	6	26	10
737	Dipterocarpaceae	<i>Dipterocarpus verrucosus</i> Foxw. ex Slooten	2	22	20.31	5	31	1	0	19	3	3	0	3	26	8
45	Euphorbiaceae	<i>Mallotus caudatus</i> Merr.	2	21.9	39.75	16	23	4	1	0	1	5	3	7	22	16
134	Celastraceae	<i>Salacia korthalsiana</i> Miq.	2	21.9	14.49	5	38	0	0	0	0	0	8	4		

Table S5.1. (continued).

sp#	Family	Species	Cluster Group	IndVal	Area (in %)	1	2	3	4	5	6	7	8	9	10	11
909	Araucariaceae	<i>Agathis endertii</i> Meijer Drees	2	11.8	16.78	6	25	5	0	0	1	23	1	4	15	19
360	Flacourtiaceae	<i>Homalium moultonii</i> Merr.	2	4.8	2.38	0	41	0	0	15	0	0	0	10	34	0
1007	Rosaceae	<i>Rubus benguetensis</i> Elmer	3	36.8	19.86	35	16	40	0	0	3	1	2	0	3	1
1357	Orchidaceae	<i>Bulbophyllum sopoetanense</i> Schltr.	3	36.8	20.31	34	10	41	0	0	7	1	3	0	4	2
1428	Orchidaceae	<i>Pholidota ventricosa</i> Blume Rchb.f.	3	33.8	16.88	38	15	42	0	0	3	0	0	0	2	0
513	Clethraceae	<i>Clethra canescens</i> Reinw. ex Blume var. <i>clementis</i> Merr. Sleumer	3	25.9	26.4	30	9	31	0	0	10	1	0	0	14	5
1344	Orchidaceae	<i>Bulbophyllum lobbii</i> Lindl.	3	25.9	18.13	24	32	33	0	0	3	0	0	1	6	1
1391	Orchidaceae	<i>Dendrobium indivisum</i> Blume Miq.	3	24.3	36.52	21	13	25	0	0	5	2	8	0	19	6
892	Olacaceae	<i>Erythralium scandens</i> Blume	3	18.6	39.17	21	0	22	0	0	15	5	4	0	20	12
1285	Moraceae	<i>Ficus megaleia</i> Corner	3	15.4	36.1	16	7	20	0	6	9	1	9	11	9	11
927	Podocarpaceae	<i>Nageia wallichiana</i> Kuntze	3	10.2	19.4	14	1	22	0	0	17	6	5	18	9	9
720	Dipterocarpaceae	<i>Dipterocarpus costulatus</i> Sloot.	4	33.4	12.62	0	0	50	0	0	0	0	8	1	36	6
118	Euphorbiaceae	<i>Chondrostylis bancana</i> Boerl.	4	27.4	13.4	0	3	0	42	0	14	12	17	0	10	3
714	Dipterocarpaceae	<i>Dipterocarpus borneensis</i> Slooten	4	27.3	19.66	0	5	0	34	0	5	11	6	11	25	3
1394	Orchidaceae	<i>Dendrobium lobatum</i> Blume Miq.	4	25.3	16.11	0	0	0	43	0	0	0	27	0	15	18
303	Bursaraceae	<i>Canarium patentinervium</i> Miq.	4	18.6	29.53	0	5	0	23	0	2	13	2	23	23	8
1162	Loranthaceae	<i>Dendrophthoe longituba</i> Elmer Danser	4	15.8	12.77	8	20	0	32	4	1	1	0	7	23	5
1073	Meliaceae	<i>Chisocheton amabilis</i> Miq.	5	61.2	14.36	0	0	0	0	63	0	0	9	16	10	3
1178	Moraceae	<i>Ficus heterophylla</i> L.f.	5	50.6	14.97	0	0	0	0	55	0	1	1	24	6	14
1267	Loranthaceae	<i>Helixanthera setigera</i> Korth. Danser	5	45.9	12.42	0	0	0	0	57	0	0	0	29	10	5
770	Dipterocarpaceae	<i>Shorea albidia</i> Symington	5	42.8	8.7	0	0	0	0	69	0	0	4	1	25	1
438	Ericaceae	<i>Costera ovalifolia</i> J.J.Sm.	5	42.2	17.42	13	8	0	0	49	0	2	3	3	13	10
189	Amaranthaceae	<i>Alternanthera sessilis</i> L. R.Br. ex DC.	5	41	20.24	0	0	0	0	42	2	0	3	41	7	5
1116	Caesalpiniaceae	<i>Bauhinia kockiana</i> Korth. var. <i>velutina</i> de Wit K.Larsen & S.S.Larsen	5	35	17.7	0	1	0	0	46	12	0	32	1	8	0
1182	Loranthaceae	<i>Scurrella lepidota</i> Blume G.Don	5	34.2	19.02	0	0	0	0	40	1	0	3	38	6	13
950	Polygalaceae	<i>Xanthophyllum ramiflorum</i> Meijden	5	32.5	20.3	0	2	0	34	36	2	5	1	7	14	0
740	Dipterocarpaceae	<i>Dryobalanops fusca</i> Slooten	5	31.9	12.62	0	0	0	0	47	4	1	2	39	7	0
1267	Moraceae	<i>Ficus depressa</i> Blume	5	30.5	24.97	12	2	0	0	37	2	0	15	1	27	4
843	Dipterocarpaceae	<i>Shorea teysmanniana</i> Dyer	5	27.6	16.03	0	0	0	1	40	2	2	4	30	19	2
95	Euphorbiaceae	<i>Aporosa octandra</i> Buch.-Ham. ex D.Don Vickers var. <i>malesiana</i> Schot	5	27.3	18.97	0	0	0	1	38	9	2	18	19	11	3
1416	Orchidaceae	<i>Eria xanthochela</i> Ridl.	5	26.8	20.16	1	8	5	0	35	21	4	15	4	6	0
1044	Sapindaceae	<i>Xerospermum laevigatum</i> Radlk. subsp. <i>acuminatum</i> Radlk. Leenh.	5	25.2	21.23	0	0	0	7	34	0	6	0	14	27	11
148	Euphorbiaceae	<i>Macaranga punctulata</i> Gage	5	24.8	30.43	1	0	0	11	28	1	2	11	22	19	5
181	Euphorbiaceae	<i>Sauropus androgynus</i> L. Merr.	5	24.2	34.7	0	5	0	0	26	9	5	3	19	22	9
1311	Moraceae	<i>Ficus villosa</i> Blume	5	23.4	30.21	19	4	8	0	28	5	0	1	3	19	12
1314	Moraceae	<i>Parartocarpus venenosus</i> Becc.	5	22.3	25.52	15	4	2	4	31	0	2	8	1	23	9
267	Thymelaeaceae	<i>Gonystylus bancanus</i> Miq. Kurz	5	22.1	20.35	0	1	0	0	32	11	0	0	26	28	1
1128	Caesalpiniaceae	<i>Copaifera palustris</i> Symington de Wit	5	21.9	31.21	0	5	0	5	26	5	9	9	20	20	3
1179	Loranthaceae	<i>Macrosolen retusus</i> Jack Miq.	5	21.6	20.4	0	0	1	11	31	2	4	12	26	12	0
817	Dipterocarpaceae	<i>Shorea ovalis</i> Korth. Blume	5	21.4	43.85	3	1	0	1	22	4	9	4	19	20	16
1097	Meliaceae	<i>Sandaricum beccarianum</i> Baill.	5	21	19.24	0	0	0	3	32	0	1	1	31	23	9
413	Campanulaceae	<i>Pentaphragma acuminatum</i> Airy Shaw	5	20.9	17.24	32	0	25	0	34	2	0	0	0	6	0
403	Rhizophoraceae	<i>Combretocarpus rotundatus</i> Miq. Danser	5	20.1	25.79	0	0	0	11	27	1	1	4	21	24	12
783	Dipterocarpaceae	<i>Shorea cuspidata</i> P.S.Ashton	5	20	7.01	0	4	0	1	52	4	0	2	9	28	0
343	Dichapetalaceae	<i>Dichapetalum gelonioides</i> Roxb. Engl. subsp. <i>sumatranum</i> Miq. Leenh.	5	19.6	23.31	10	9	0	0	29	0	0	1	9	24	17
338	Connaraceae	<i>Ellipanthus tomentosus</i> Kurz var. <i>tomentosus</i>	5	18.1	11.09	0	0	0	3	40	1	1	3	15	36	0
1191	Myristicaceae	<i>Horsfieldia crassifolia</i> Hook.f. & Thomson Warb.	5	17.2	11.01	0	0	0	0	39	0	0	0	19	33	8
628	Cornaceae	<i>Mastixia eugenioides</i> K.M.Matthew	5	16.9	27.2	0	18	0	1	23	9	11	2	16	20	1
1185	Viscaceae	<i>Viscum ovalifolium</i> DC.	5	16.8	35.82	7	4	2	0	22	15	0	11	14	19	5
595	Cyperaceae	<i>Fimbristylis ferruginea</i> L. Vahl	5	16.7	14.1	0	0	0	2	34	0	0	6	32	22	4
3	Annonaceae	<i>Cyathocalyx biovulatus</i> Boerl.	5	16.1	7.79	0	0	0	0	45	0	0	1	17	37	0
880	Araliaceae	<i>Schefflera tetrandra</i> Merr.	5	15.9	16.47	0	20	0	18	28	6	3	1	4	20	0
1266	Moraceae	<i>Ficus deltaeoides</i> Jack subsp. <i>motleyana</i> Miq. C.C.Berg	5	14.2	43.79	3	6	0	13	17	12	5	9	12	17	4
1156	Daphniphyllaceae	<i>Daphniphyllum laurinum</i> Benth. Baill.	5	14.1	13	8	4	0	0	34	1	0	6	4	33	11

Table S5.1. (continued).

sp#	Family	Species	Cluster Group	IndVal	Area (in %)	1	2	3	4	5	6	7	8	9	10	11	
119	Euphorbiaceae	<i>Chondrostylis kunsteri</i> King ex Hook.f. Airy Shaw	5	13.7	6.55	0	36	0	6	39	1	0	0	1	3	14	0
239	Dioscoriaceae	<i>Dioscorea pyriformis</i> Kunth	5	13.6	18.83	6	7	0	0	27	4	1	2	20	19	13	
326	Bursaraceae	<i>Santiria rubiginosa</i> Blume var. <i>pedicellata</i> Ridl. Kalkman	5	13.3	11.5	0	0	0	12	32	2	0	3	28	22	0	
1409	Orchidaceae	<i>Eria leiophylla</i> Lindl.	5	12.2	26.08	21	3	5	0	23	14	0	7	0	22	6	
116	Euphorbiaceae	<i>Cephalomappa paludicola</i> Airy Shaw	5	10	1.67	0	0	0	0	72	0	0	3	21	4	0	
693	Anacardiaceae	<i>Parishia insignis</i> Hook.f.	5	9.5	14.49	0	6	0	0	27	0	0	17	5	25	20	
1006	Rosaceae	<i>Prunus turfosa</i> Kalkman	5	8.9	7.9	0	4	0	0	33	23	2	13	7	18	0	
261	Thymelaeaceae	<i>Aetoxylon sympetalum</i> Steenis & Domke Airy Shaw	5	8.5	26.21	0	10	0	11	17	9	6	13	17	16	0	
102	Euphorbiaceae	<i>Baccaurea brevipes</i> Hook.f.	5	3.9	2.94	0	27	0	0	34	2	0	7	13	17	0	
573	Fagaceae	<i>Lithocarpus meijeri</i> Soepadmo	6	26.6	19.06	13	22	7	0	0	36	0	0	0	21	0	
138	Euphorbiaceae	<i>Macaranga hoesii</i> King ex Hook.f.	6	22.6	31.4	1	11	2	0	13	26	7	12	5	22	2	
840	Dipterocarpaceae	<i>Shorea stenoptera</i> Burck	6	22	27.46	0	20	10	2	3	25	9	3	19	10	0	
135	Euphorbiaceae	<i>Macaranga costulata</i> Pax & K.Hoffm.	6	20.5	36.87	14	12	8	0	4	23	1	6	10	21	1	
230	Dilleniaceae	<i>Saurauia javanica</i> Nees Hoogland	6	17.7	39.23	19	6	18	0	0	21	1	0	9	19	5	
1277	Moraceae	<i>Ficus hemsleyana</i> King	6	15.9	38.18	14	19	12	0	3	20	2	8	2	20	1	
536	Oxalidaceae	<i>Sarcotheca macrophylla</i> Blume	6	12.2	38.87	0	14	8	10	8	16	11	13	6	6	8	
234	Dilleniaceae	<i>Saurauia subcordata</i> Korth.	6	10.6	9.79	19	0	12	0	0	33	0	0	18	14	4	
785	Dipterocarpaceae	<i>Shorea elliptica</i> Burck	6	10.4	14.82	0	24	5	1	12	24	3	9	7	16	0	
884	Liliaceae	<i>Peliosanthes teta</i> Andrews subsp. <i>humilis</i> Andr. Jessop	8	36.2	17.09	3	0	0	0	1	3	0	52	12	28	1	
1088	Meliaceae	<i>Dysoxylum grande</i> Hiern	8	21	17.72	20	0	1	0	0	3	2	40	0	33	1	
52	Annonaceae	<i>Polyalthia xanthopetalata</i> Merr.	8	16	16.16	1	0	0	0	0	1	0	34	23	33	8	
985	Mimosaceae	<i>Archidendron clypearia</i> Jack I.C.Nielsen var. <i>casai</i> Blanco I.C.Nielsen	8	15.5	38.89	12	0	3	0	0</							

Table S5.1. (continued).

sp#	Family	Species	Cluster Group	IndVal	Area (in %)	1	2	3	4	5	6	7	8	9	10	11
68	Euphorbiaceae	<i>Antidesma coriaceum</i> Tul.	9	21.9	26.94	2	5	0	11	20	0	1	1	27	23	9
183	Euphorbiaceae	<i>Shirakiopsis indica</i> Willd. Esser	9	20.9	14.12	0	0	0	5	3	0	0	0	39	38	15
429	Celastraceae	<i>Lophopetalum wightianum</i> Arn.	9	20.1	16	0	0	0	2	0	0	1	16	37	12	32
989	Mimosaceae	<i>Archidendron jiringa</i> Jack I.C.Nielsen	9	20.1	20.15	0	0	0	0	0	1	12	12	32	16	28
197	Combretaceae	<i>Combretum tetralophum</i> C.B.Clark	9	19.6	11.01	0	0	0	0	11	1	1	0	42	22	23
708	Labiatae	<i>Hyptis capitata</i> Jacq.	9	19	23.71	8	0	1	1	12	3	0	4	29	28	15
861	Dipterocarpaceae	<i>Vatica rassak</i> Korth. Blume	9	19	44.77	5	0	0	5	20	1	10	6	20	16	17
1146	Caesalpiniaceae	<i>Sindora coriacea</i> Prain	9	18.9	14.77	6	0	0	0	0	0	2	9	37	21	26
1310	Moraceae	<i>Ficus unigera</i> Miq.	9	18.3	39.37	22	1	4	0	10	4	4	1	22	12	19
178	Euphorbiaceae	<i>Omphalea sargentii</i> Merr.	9	17.9	21.76	9	0	0	0	0	0	0	13	30	25	22
688	Anacardiaceae	<i>Mangifera laurina</i> Blume	9	17.2	19.2	0	0	0	5	0	1	3	4	31	26	30
591	Cyperaceae	<i>Cyperus javanicus</i> Houtt.	9	16.9	12.23	0	0	0	11	13	2	1	2	36	25	11
218	Dilleniaceae	<i>Dillenia eximia</i> Miq.	9	16.8	16.7	0	0	0	0	0	8	3	1	32	27	29
1161	Loranthaceae	<i>Dendrophloe curvata</i> Blume Miq.	9	16.7	18.3	1	0	0	6	24	3	1	4	30	25	5
667	Ulmaceae	<i>Trema cannabina</i> Lour.	9	16.6	60.36	2	1	0	5	11	8	10	14	17	16	16
896	Oleaceae	<i>Strombosia javanica</i> Blume	9	14.4	10.35	0	0	0	0	18	0	1	9	37	5	30
199	Combretaceae	<i>Quisqualis indica</i> L.	9	13.9	22.89	0	0	0	8	17	1	10	10	24	10	21
594	Cyperaceae	<i>Fimbristylis cymosa</i> R.Br.	9	13.8	14.62	0	0	0	5	23	1	0	3	30	27	10
345	Dichapetalaceae	<i>Dichapetalum grandifolium</i> Ridl.	9	13.6	15.88	15	0	0	0	0	0	1	9	31	21	22
589	Cyperaceae	<i>Cyperus brevifolius</i> Rottb. Hassk.	9	12.9	24.94	16	5	1	2	1	1	3	9	24	24	14
1275	Moraceae	<i>Ficus grossularioides</i> Burm.f. var. <i>grossularioides</i>	9	11.3	17.17	0	3	0	0	22	18	6	5	25	15	7
605	Cyperaceae	<i>Schoenus calostachyus</i> R.Br. Poir.	9	11.2	12.08	0	0	0	2	28	1	2	9	30	26	2
707	Labiatae	<i>Hyptis brevipes</i> Poit.	9	11.1	35.19	12	0	9	3	14	4	7	7	18	12	15
642	Symplocaceae	<i>Symplocos cochinchinensis</i> Lour. S.Moore subsp. <i>cochinchinensis</i>	9	10.6	20.68	19	0	15	0	14	8	1	11	22	3	7
709	Labiatae	<i>Leucas zeylanica</i> L. R.Br.	9	8	8.32	0	0	0	0	27	0	0	4	31	30	8
66	Euphorbiaceae	<i>Aleurites moluccana</i> L. Willd.	9	6.4	7.99	6	0	0	6	6	0	0	5	29	26	22
956	Polygalaceae	<i>Xanthophyllum trichocladium</i> Chodat	10	55.6	13.51	1	3	0	0	0	4	0	2	11	70	10
273	Thymelaeaceae	<i>Gonystylus stenosepalus</i> Airy Shaw	10	55	13.1	1	15	0	0	0	15	0	1	1	68	0
63	Annonaceae	<i>Uvaria sorzogonensis</i> C.Presl	10	53.3	9.75	4	0	0	0	0	0	0	1	1	83	11
209	Convolvulaceae	<i>Erycibe stenophylla</i> Hoogland	10	51.1	11.09	8	1	0	0	0	0	0	1	0	76	14
768	Dipterocarpaceae	<i>Shorea agami</i> P.S.Ashton	10	50.4	11.12	5	1	0	0	0	0	0	0	4	75	15
1175	Loranthaceae	<i>Loxanthera speciosa</i> Blume	10	50.4	18.78	4	3	0	2	12	1	0	6	15	55	1
1228	Myristicaceae	<i>Myristica depressa</i> W.J.de Wilde	10	50.4	11.67	0	1	0	1	14	0	0	1	13	70	1
967	Chrysobalaceae	<i>Kosteranthus heteropetalus</i> Scort. ex King Prance	10	50.3	11.43	11	0	0	0	0	0	0	0	0	75	14
93	Euphorbiaceae	<i>Aporosa nigricans</i> Hook.f.	10	50.1	8.71	3	0	0	0	0	0	0	0	1	85	11
767	Dipterocarpaceae	<i>Shorea acuminatissima</i> Symington	10	49.8	12.23	4	0	0	0	0	0	0	0	7	71	18
797	Dipterocarpaceae	<i>Shorea havilandii</i> Brandis	10	49.8	19.81	4	2	0	0	13	3	0	6	10	54	8
853	Dipterocarpaceae	<i>Vatica mangachapoi</i> Blanco	10	48.9	15.38	8	0	0	0	13	0	0	2	0	62	16
500	Loganiaceae	<i>Narrisia maior</i> Soler.	10	48	16.65	12	3	0	0	8	0	0	0	0	59	18
47	Annonaceae	<i>Polyalthia insignis</i> Hook.f. Airy Shaw	10	46.7	14.22	17	0	0	0	1	0	0	1	5	64	11
1125	Caesalpiniaceae	<i>Caesalpinia major</i> Medik. Dandy & Exell	10	46.5	10.1	0	0	0	0	5	0	0	2	9	74	9
1120	Caesalpiniaceae	<i>Bauhinia wrayi</i> Prain ex King var. <i>borneensis</i> K.Larsen & S.S.Larsen	10	46	20.88	3	9	0	0	0	7	2	8	9	50	13
1224	Myristicaceae	<i>Knema stylosa</i> W.J.de Wilde W.J.de Wilde	10	45.9	16.15	19	6	0	0	0	0	0	5	1	59	9
288	Bursaceae	<i>Canarium caudatum</i> King f. <i>caudatum</i>	10	45.7	16.14	11	10	0	0	2	0	4	0	6	57	9
836	Dipterocarpaceae	<i>Shorea scrobiculata</i> Burck	10	45	15.82	10	26	0	0	0	0	0	1	4	55	5
1118	Caesalpiniaceae	<i>Bauhinia semibifida</i> Roxb.	10	44.8	17.37	8	7	0	0	1	0	1	17	0	56	9
366	Flacourtiaceae	<i>Hydnocarpus gracilis</i> Slooten Sleumer	10	44.6	12.03	5	0	0	0	0	0	2	2	0	68	23
936	Polygalaceae	<i>Xanthophyllum adenotus</i> Miq. var. <i>adenotus</i>	10	44.6	15.33	14	14	0	0	0	0	0	0	6	58	9
1274	Moraceae	<i>Ficus globosa</i> Blume	10	44.4	11.72	7	0	0	0	2	0	0	11	8	69	3
1021	Sapindaceae	<i>Guioa bijuga</i> Hiern Radlk.	10	44.2	14.43	15	0	0	0	0	0	0	0	2	62	20
543	Violaceae	<i>Rinorea longiracemosa</i> Kurz Craib	10	44	21.81	17	1	0	0	0	0	0	8	12	50	13
32	Annonaceae	<i>Orophea corymbosa</i> Blume Miq.	10	43.7	12.66	3	0	0	2	0	2	1	6	14	64	9
389	Proteaceae	<i>Helicia fuscotomentosa</i> Suess.	10	43.7	12.56	21	2	2	0	0	3	0	1	5	66	1
845	Dipterocarpaceae	<i>Shorea xanthophylla</i> Symington	10	43.4	16.1	9	21	0	0	0	1	0	0	4	54	12
805	Dipterocarpaceae	<i>Shorea laxa</i> Slooten	10	42.9	15.72	4	5	0	0	3	0	1	5	3	57	21
695	Anacardiaceae	<i>Parishia sericea</i> Ridl.	10	42.6	14	17	4	0	0	0	0	0	2	1	62	14

Table S5.1. (continued).

sp#	Family	Species	Cluster Group	IndVal	Area (in %)	1	2	3	4	5	6	7	8	9	10	11
373	Flacourtiaceae	<i>Ryparosa acuminata</i> Merr.	10	42.4	20.22	12	19	0	0	0	3	0	4	7	48	7
428	Celastraceae	<i>Lophopetalum subobovatum</i> King	10	42.4	14.29	2	0	0	20	0	2	0	5	14	56	1
1074	Meliaceae	<i>Chisocheton erythrocarpus</i> Hiern	10	42	15.1	7	2	0	19	0	0	1	1	0	56	14
979	Mimosaceae	<i>Albizia kostermansii</i> I.C.Nielsen	10	41.9	12.16	6	0	0	0	0	0	0	13	0	66	14
1010	Rosaceae	<i>Rubus moluccanus</i> L. var. <i>angulosus</i> Kalkman	10	41.6	13.02	7	1	0	0	0	0	0	14	0	64	14
1106	Caesalpiniaceae	<i>Bauhinia diptera</i> Miq.	10	41.5	11.27	1	0	0	0	1	0	0	0	11	66	21
1079	Meliaceae	<i>Chisocheton pentandrus</i> Blanco Merr. subsp. <i>paucijugus</i> Miq. Mabb.	10	41.4	22.34	18	4	0	0	0	0	0	9	6	48	15
498	Loganiaceae	<i>Fagraea ridleyi</i> King & Gamble	10	41.3	13.58	15	6	0	0	0	5	0	1	11	59	2
809	Dipterocarpaceae	<i>Shorea macropterifolia</i> P.S.Ashton	10	40	14.9	6	29	0	0	0	2	2	0	0	52	9
618	Hypericaceae	<i>Cratoxylum arborescens</i> Vahl Blume var. <i>arborescens</i>	10	39.9	18.56	16	14	0	0	3	0	0	0	5	49	12
801	Dipterocarpaceae	<i>Shorea isoptera</i> P.S.Ashton	10	39.9	7.08	0	2	0	0	0	0	0	0	15	82	1
21	Annonaceae	<i>Mezzettia havilandii</i> Boerl. Ridl.	10	39.8	14.49	2	5	0	5	8	1	0	1	22	54	2
222	Dilleniaceae	<i>Dillenia sumatrana</i> Miq.	10	39.8	18.98	5	15	0	12	2	1	0	1	7	46	12
157	Euphorbiaceae	<i>Mallotus floribundus</i> (Blume) Müll. Arg.	10	39.7	25.06	4	2	0	0	0	10	1	3	27	41	12
780	Dipterocarpaceae	<i>Shorea confusa</i> P.S.Ashton	10	39.6	10.7	0	0	0	0	2	0	0	0	15	66	17
838	Dipterocarpaceae	<i>Shorea slootenii</i> G.H.S.Wood	10	39.6	9.36	0	16	0	0	0	0	12	0	3	67	1
245	Gnetaceae	<i>Gnetum diminutum</i> Markgr.	10	39.4	18.76	8	18	0	6	3	2	0	1	5	47	11
341	Dichapetalaceae	<i>Dichapetalum gelanioides</i> Roxb. Engl.	10	39.4	12.51	4	2	0	0	0	8	2	8	0	62	14
355	Flacourtiaceae	<i>Flacourtia jangomas</i> Lour. Raeusch.	10	39.4	15.03	2	1	0	7	10	0	0	13	9	55	4
399	Rhizophoraceae	<i>Carallia borneensis</i> Oliv.	10	39.4	22.3	9	0	0	0	0	1	0	0	21	45	23
27	Annonaceae	<i>Monocarpia borneensis</</i>														

Table S5.1. (continued).

sp#	Family	Species	Cluster Group	IndVal	Area (in %)	1	2	3	4	5	6	7	8	9	10	11
1292	Moraceae	<i>Ficus pellucidopunctata</i> Griff.	10	35.3	24.64	7	0	0	0	2	11	1	2	20	40	16
1062	Meliaceae	<i>Aglaia odoratissima</i> Blume	10	35.2	25.98	16	7	0	0	3	0	0	5	9	40	20
988	Mimosaceae	<i>Archidendron ellipticum</i> Blume I.C.Nielsen	10	35	26.29	10	17	0	0	0	5	0	4	8	38	17
578	Fagaceae	<i>Lithocarpus urceolaris</i> Jack Merr.	10	34.9	20.52	7	0	0	0	0	0	0	6	12	45	29
773	Dipterocarpaceae	<i>Shorea argentifolia</i> Symington	10	34.9	19.42	13	32	0	0	0	2	0	2	0	43	8
1099	Meliaceae	<i>Sandaricum koetjape</i> Burm.f. Merr.	10	34.9	23.28	14	3	0	0	0	2	2	4	20	41	14
1165	Loranthaceae	<i>Helixanthera coccinea</i> Jack Danser	10	34.9	20.47	7	0	0	1	14	2	0	6	15	44	11
913	Ixonanthaceae	<i>Ixonanthes reticulata</i> Jack	10	34.7	28.47	12	4	0	1	0	8	3	6	25	36	5
584	Passifloraceae	<i>Adenia cordifolia</i> Blume Engl.	10	34.6	23.34	8	1	0	0	18	0	0	1	10	41	20
1085	Meliaceae	<i>Dysoxylum brachybotrys</i> Merr.	10	34.5	18.57	0	25	0	0	2	9	1	15	3	44	2
163	Euphorbiaceae	<i>Mallotus miquelianus</i> (Scheff.) Boerl.	10	34.3	25.95	8	2	0	0	2	6	0	4	26	38	15
1230	Myristicaceae	<i>Myristica guatterifolia</i> A.DC.	10	34.3	9.44	4	0	0	0	0	0	0	0	7	67	23
524	Icacinaeae	<i>Sarcostigma paniculata</i> Pierre	10	34.2	26.51	11	0	0	0	1	11	2	6	27	38	5
747	Dipterocarpaceae	<i>Hopea cernua</i> Teijsm. & Binn.	10	34.1	20.3	14	2	0	0	0	0	0	5	4	46	29
1052	Meliaceae	<i>Aglaia grandis</i> Korth. ex Miq.	10	34.1	14.32	29	0	0	0	0	0	0	1	2	56	12
1308	Moraceae	<i>Ficus treubii</i> King	10	34.1	23.46	26	23	0	0	0	0	0	0	0	40	10
1295	Moraceae	<i>Ficus recurva</i> Blume var. <i>pedicellata</i> Corner	10	34	19.04	15	33	0	0	1	0	1	0	3	42	6
86	Euphorbiaceae	<i>Aporosa elmeri</i> Merr.	10	33.9	25.46	17	12	1	0	0	0	0	11	4	39	15
1043	Sapindaceae	<i>Trigonachras acuta</i> Radlk.	10	33.9	10.63	7	0	0	0	0	0	1	11	1	64	16
553	Fagaceae	<i>Castanopsis motleyana</i> King	10	33.8	15.9	9	3	0	2	8	0	1	0	12	49	16
732	Dipterocarpaceae	<i>Dipterocarpus palembanicus</i> Slooten	10	33.8	10.46	0	16	0	0	1	1	5	0	5	59	14
51	Annonaceae	<i>Polyalthia tenuipes</i> Merr.	10	33.7	7.08	11	0	0	0	0	0	0	0	7	77	5
130	Euphorbiaceae	<i>Macaranga bancana</i> Miq. Müll.Arg.	10	33.7	21.03	9	6	1	0	1	7	5	3	19	42	8
358	Flacourtiaceae	<i>Homalium foetidum</i> Roxb. Benth.	10	33.7	24.97	8	7	0	0	0	8	1	7	19	38	13
170	Euphorbiaceae	<i>Melanolepis multiglandulosa</i> Reinw. ex Blume Rchb.f. & Zoll.	10	33.4	15.36	15	0	0	0	0	0	1	0	5	52	27
348	Erythroxylaceae	<i>Erythroxylum ecarinatum</i> Burck	10	33.4	8.64	1	6	0	0	3	0	0	2	1	68	20
772	Dipterocarpaceae	<i>Shorea andulensis</i> P.S.Ashton	10	33.4	12.74	5	37	0	0	0	3	2	0	0	50	3
1101	Meliaceae	<i>Walsura ahermiana</i> Perk.	10	33.3	8.5	23	0	0	0	0	0	0	0	4	71	2
380	Flacourtiaceae	<i>Scolopia spinosa</i> Roxb. Warb.	10	33.1	23.57	7	0	0	0	0	0	0	16	12	41	24
421	Celastraceae	<i>Loeseneriella pauciflora</i> DC. A.C.Sm.	10	33.1	12.01	0	0	0	3	10	0	0	0	19	55	13
905	Menispermaceae	<i>Hypserpa nitida</i> Miers	10	33.1	11.06	9	0	0	0	0	0	0	0	14	60	16
217	Dilleniaceae	<i>Dillenia excelsa</i> Jack Martelli var. <i>pubescens</i> Corner Masam.	10	33	11.18	5	0	0	4	0	0	0	0	13	59	19
426	Celastraceae	<i>Lophopetalum rigidum</i> Ridl.	10	33	21.31	8	22	0	1	22	4	0	1	1	39	0
968	Chrysobalaceae	<i>Licania splendens</i> Korth. Prance	10	33	23.1	5	1	0	0	4	0	0	7	26	40	17
992	Mimosaceae	<i>Entada rheedii</i> Spreng.	10	33	22.15	13	0	0	0	0	6	0	0	15	42	24
1056	Meliaceae	<i>Aglaia leptantha</i> Miq.	10	33	24.15	23	0	0	2	4	0	0	6	9	41	15
745	Dipterocarpaceae	<i>Hopea beccariana</i> Burck	10	32.9	22.77	11	6	0	0	19	0	0	3	5	40	15
346	Erythroxylaceae	<i>Erythroxylum burmanicum</i> Griff.	10	32.7	17.05	4	5	0	0	0	0	1	0	19	46	24
641	Symplocaceae	<i>Symplocos celastrifolia</i> Griff. ex C.B.Clarke	10	32.7	21.58	5	3	0	4	17	0	0	0	23	40	9
496	Loganiaceae	<i>Fagraea fragrans</i> Roxb.	10	32.6	29.98	3	7	0	0	18	6	1	5	12	34	14
844	Dipterocarpaceae	<i>Shorea venulosa</i> G.H.S.Wood ex Meijer	10	32.6	11.32	11	17	0	0	0	0	0	0	8	56	8
334	Connaraceae	<i>Connarus odoratus</i> Hook.f.	10	32.5	22.39	3	3	0	0	5	23	1	4	9	40	13
937	Polygalaceae	<i>Xanthophyllum adenotus</i> Miq. var. <i>arsatii</i> C.E.C.Fisch. W.J.de Wilde & Duyfjes	10	32.4	22.49	1	19	0	1	12	10	0	11	5	38	3
56	Annonaceae	<i>Popowia tomentosa</i> Maingay ex Hook.f. & Thomson	10	32.3	13.55	6	0	0	0	0	0	0	24	0	56	15
819	Dipterocarpaceae	<i>Shorea ovalis</i> Korth. Blume subsp. <i>sarawakensis</i> P.S.Ashton	10	32.3	12.69	0	0	0	0	0	2	0	34	0	58	6
574	Fagaceae	<i>Lithocarpus nieuwenhuisii</i> Seem. A.Camus	10	32.2	20.52	19	19	0	0	0	0	0	0	5	42	15
692	Anacardiaceae	<i>Melanochyla elmeri</i> Merr.	10	32.1	15.72	7	0	0	0	3	0	0	1	5	50	35
263	Thymelaeaceae	<i>Aquilaria beccariana</i> Tiegh.	10	32	22.99	17	8	0	0	2	0	5	5	2	40	21
305	Burseraceae	<i>Dacryodes castata</i> A.W.Benn. H.J.Lam	10	32	12.95	14	0	0	0	5	0	0	0	1	55	25
716	Dipterocarpaceae	<i>Dipterocarpus caudiferus</i> Merr.	10	32	26.56	5	6	0	9	2	0	0	4	17	36	22
1385	Orchidaceae	<i>Cymbidium finlaysonianum</i> Lindl.	10	32	12.66	1	0	0	0	20	1	0	21	3	55	0
309	Burseraceae	<i>Dacryodes macrocarpa</i> King H.J.Lam var. <i>macrocarpa</i>	10	31.9	12.78	7	0	0	0	7	0	3	0	4	55	24
757	Dipterocarpaceae	<i>Hopea nervosa</i> King	10	31.9	13.94	0	37	0	0	0	10	1	1	3	45	2

Table S5.1. (continued).

sp#	Family	Species	Cluster Group	IndVal	Area (in %)	1	2	3	4	5	6	7	8	9	10	11		
1109	Caesalpiniaceae	<i>Bauhinia finlaysoniana</i> Benth. Graham ex Baker var. <i>leptopus</i> Perkins K.Larsen & S.S.Larsen	10	31.9	14.64	32	0	0	0	0	0	0	0	0	14	0	54	0
15	Annonaceae	<i>Goniothalamus woodii</i> Salleh	10	31.7	10.03	6	0	0	0	0	0	0	1	22	61	11		
508	Simaroubaceae	<i>Iringia malayana</i> Oliv.	10	31.6	9.54	0	0	0	0	11	0	0	0	8	62	19		
1263	Moraceae	<i>Ficus delavayi</i> Corner	10	31.6	8.07	0	0	0	0	0	0	1	17	0	71	10		
173	Euphorbiaceae	<i>Neoscortechinia angustifolia</i> Airy Shaw Welzen	10	31.5	12.02	7	0	0	0	0	0	0	0	21	55	16		
1042	Sapindaceae	<i>Pometia pinnata</i> J.R.Forst. & G.Forst. f. <i>alnifolia</i> Blume M.Jacobs	10	31.5	21.17	17	0	0	0	0	2	4	0	19	41	16		
1296	Moraceae	<i>Ficus recurva</i> Blume var. <i>ribesoides</i> Wall. King	10	31.5	20.33	12	0	0	0	0	4	0	22	6	44	12		
74	Euphorbiaceae	<i>Antidesma neurocarpum</i> Miq. var. <i>hosei</i> Pax & K.Hoffm. Petra Hoffm.	10	31.4	27	25	13	5	0	1	3	0	9	3	36	5		
219	Dilleniaceae	<i>Dillenia luzoniensis</i> Martelli	10	31.4	9.43	8	0	0	9	1	0	0	4	3	63	13		
1041	Sapindaceae	<i>Paranephelium xestophyllum</i> Miq.	10	31.4	28.82	14	0	0	0	0	3	0	6	16	36	25		
1201	Myristicaceae	<i>Horsfieldia ridleyana</i> King Warb.	10	31.2	13.01	0	20	0	4	8	6	7	0	7	48	1		
1212	Myristicaceae	<i>Knema laurina</i> Blume Warb.	10	31.2	17.21	2	0	0	0	6	0	0	8	5	47	32		
107	Euphorbiaceae	<i>Baccaurea polyneura</i> Hook.f.	10	31.1	26.83	14	2	0	0	6	0	0	10	5	38	25		
284	Xyridaceae	<i>Xyris complanata</i> R.Br.	10	31.1	6.53	0	0	0	1	0	0	1	1	10	76	11		
314	Burseraceae	<i>Dacryodes rostrata</i> Blume H.J.Lam f. <i>rostrata</i>	10	31	29.74	4	2	0	7	10	0	0	12	13	34	17		
1304	Moraceae	<i>Ficus sumatrana</i> Miq. Miq.	10	31	29.79	30	3	3	0	7	0	0	2	0	36	19		
706	Labiatae	<i>Gomphostemma microcalyx</i> Prain.	10	30.9	9.86	14	0	0	0	0	24	0	0	0	61	0		
1170	Loranthaceae	<i>Lepeosteges beccarii</i> King Gamble	10	30.9	24.03	22	3	0	0	1	0	0	0	5	40	28		
115	Euphorbiaceae	<i>Cephalomappa beccariana</i> Baill. var. <i>hosei</i> Airy Shaw	10	30.7	17.34	0	1	0	0	14	1	2	21	5	46	10		
433	Celastraceae	<i>Salacia chinensis</i> L.	10	30.7	25.53	2	5	0	19	8	1	1	6	13	35	11		
541	Violaceae	<i>Rinorea horneri</i> Korth. Kuntze	10	30.7	18.93	21	23	0	0	0	0	0	0	5	42	9		
250	Celastraceae	<i>Gnetum latifolium</i> Blume var. <i>latifolium</i>	10	30.6	22.01	2	2	0	17	14	0	0	3	17	37	7		

Table S5.1. (continued).

sp#	Family	Species	Cluster Group	IndVal	Area (in %)	1	2	3	4	5	6	7	8	9	10	11
939	Polygalaceae	<i>Xanthophyllum ellipticum</i> Korth. ex Miq.	10	29.6	28.75	7	9	0	1	24	3	0	3	13	32	7
1258	Moraceae	<i>Ficus binnendykii</i> Miq. Miq.	10	29.6	10.06	0	0	0	0	0	0	0	6	26	58	10
494	Loganiaceae	<i>Fagraea borneensis</i> Scheff.	10	29.5	24.2	25	4	0	0	7	0	1	0	2	38	24
808	Dipterocarpaceae	<i>Shorea macroptera</i> Dyer subsp. <i>sandakanensis</i> Symington P.S.Ashton	10	29.5	18.32	2	0	0	0	7	1	1	4	16	43	28
39	Annonaceae	<i>Polyalthia cauliflora</i> Hook.f. & Thomson var. <i>beccarii</i> Hook.f. & Thomson J.Sinclair	10	29.3	18.02	6	35	0	0	4	5	0	8	1	39	0
77	Euphorbiaceae	<i>Antidesma polystylum</i> Airy Shaw	10	29.3	6.91	0	4	0	0	0	4	0	5	10	71	7
279	Trigonaceae	<i>Trigonostrium hypoleucum</i> Miq.	10	29.3	32.05	16	5	0	7	7	1	1	9	10	32	13
566	Fagaceae	<i>Lithocarpus gracilis</i> Korth. Soepadmo	10	29.3	26.52	8	20	0	0	4	0	0	3	10	34	20
615	Taccaceae	<i>Tacca integrifolia</i> Ker Gawl.	10	29.3	25.17	9	15	1	0	0	18	0	2	11	35	9
238	Dilleniaceae	<i>Tetracera scandens</i> L. Merr.	10	29.2	34.21	2	4	0	0	0	5	2	21	21	31	13
625	Icacinaceae	<i>Stemonurus grandifolius</i> Becc.	10	29.2	26.85	17	10	0	0	8	0	2	0	8	35	21
525	Bignoniaceae	<i>Dolichandra spathacea</i> L.f. K.Schum.	10	29.2	7.74	0	0	0	0	1	0	0	1	21	66	11
932	Podocarpaceae	<i>Podocarpus polystachyus</i> R.Br.	10	29.1	13.65	0	0	0	4	5	1	1	13	25	49	2
248	Gnetaceae	<i>Gnetum gnemonoides</i> Brongn.	10	29	28.83	9	24	0	0	9	6	2	0	5	31	14
820	Dipterocarpaceae	<i>Shorea ovata</i> Dyer ex Brandis	10	29	9.64	0	7	0	0	18	2	0	0	16	56	0
1032	Sapindaceae	<i>Mischocarpus pentapetalus</i> Roxb. Radlk.	10	29	28.6	22	0	0	0	0	0	1	2	14	35	25
254	Gnetaceae	<i>Gnetum neglectum</i> Blume	10	28.9	30.79	11	0	0	10	0	0	1	10	11	33	24
321	Burseraceae	<i>Santiria laevigata</i> Blume f. <i>laevigata</i>	10	28.9	31.36	13	7	0	0	5	11	3	3	19	31	8
621	Hypericaceae	<i>Cratoxylum formosum</i> Jack Dyer	10	28.9	29.25	3	13	0	0	0	9	7	8	11	32	16
1231	Myristicaceae	<i>Myristica lowiana</i> King	10	28.7	14.7	0	0	0	0	44	2	0	2	4	45	2
35	Annonaceae	<i>Orophea sarawakensis</i> P.J.A.Kessler	10	28.6	8.85	1	6	0	0	0	0	0	0	14	61	18
385	Malpighiaceae	<i>Tristellateia australisae</i> A.Rich.	10	28.6	7.96	0	0	0	0	9	0	0	17	4	67	3
495	Loganiaceae	<i>Fagraea elliptica</i> Roxb.	10	28.6	21.18	19	7	2	0	20	5	2	2	1	39	3
1189	Myristicaceae	<i>Horsfieldia brachiata</i> King Warb.	10	28.5	30.43	28	8	1	0	0	2	0	6	3	34	18
134	Euphorbiaceae	<i>Macaranga conifera</i> Zoll. Müll.Arg.	10	28.4	31.39	5	0	0	0	6	1	1	12	15	32	29
320	Burseraceae	<i>Santiria laevigata</i> Blume f. <i>glabrifolia</i> Engl. H.J.Lam	10	28.4	32.2	9	6	0	4	16	2	4	1	17	30	12
545	Fagaceae	<i>Castanopsis borneensis</i> King	10	28.4	8.79	2	0	0	20	0	0	0	2	15	58	1
870	Araliaceae	<i>Arthrophyllum diversifolium</i> Blume	10	28.4	34.78	13	6	2	0	20	5	1	6	8	30	9
610	Cyperaceae	<i>Scleria sumatrensis</i> Retz.	10	28.3	13.66	0	0	0	3	0	2	0	0	36	47	12
20	Annonaceae	<i>Meiogyne virgata</i> Blume Miq.	10	28.2	29.91	17	0	0	0	1	0	0	5	18	33	26
323	Burseraceae	<i>Santiria mollis</i> Engl.	10	28.2	33.04	8	5	0	0	6	13	1	18	30	19	
501	Loganiaceae	<i>Strychnos ignatii</i> P.J.Bergius	10	28.1	35.27	6	7	0	0	0	14	1	14	14	30	13
673	Anacardiaceae	<i>Buchanania arborescens</i> Blume Blume	10	28.1	27.41	8	0	0	0	17	0	0	5	17	34	20
904	Menispermaceae	<i>Fibraea tinctoria</i> Lour.	10	28.1	14.97	7	0	0	0	30	0	0	4	6	46	8
1035	Sapindaceae	<i>Nephelium cuspidatum</i> Blume var. <i>robustum</i> Radlk. Leenh.	10	28.1	10.87	17	0	0	0	0	0	0	2	0	57	23
1063	Meliaceae	<i>Aglaia oligophylla</i> Miq.	10	28	14.14	17	0	0	0	0	0	0	1	4	50	28
1216	Myristicaceae	<i>Knema membranifolia</i> H.J.P.Winkl.	10	28	21.92	3	14	0	0	0	14	5	5	2	37	20
241	Flagellariaceae	<i>Flagellaria indica</i> L.	10	27.8	27.26	2	2	0	13	15	0	0	5	24	32	7
620	Hypericaceae	<i>Cratoxylum cochinchinense</i> Lour. Blume	10	27.8	20.64	8	0	0	0	1	6	2	6	24	39	14
1280	Moraceae	<i>Ficus inaequipetiolata</i> Merr.	10	27.8	9.93	13	0	0	0	0	0	0	1	20	58	9
229	Dilleniaceae	<i>Saurauia horrida</i> Hook.f.	10	27.7	21.56	26	29	1	0	0	2	0	0	0	37	5
408	Rhizophoraceae	<i>Rhizophora apiculata</i> Blume	10	27.7	8.03	0	0	0	1	0	0	0	0	28	62	9
278	Thymelaeaceae	<i>Wikstroemia tenuiramis</i> Miq.	10	27.6	22.42	20	11	4	0	0	1	0	5	11	37	10
353	Flacourtiaceae	<i>Casearia rugulosa</i> Blume	10	27.6	27.41	20	10	0	0	0	0	0	12	8	34	17
377	Flacourtiaceae	<i>Ryparosa kostermansii</i> Sleumer	10	27.6	20.83	5	0	0	0	0	8	0	32	4	41	11
663	Ulmaceae	<i>Gironniera hirta</i> Ridl.	10	27.6	17.63	3	21	0	0	4	1	4	0	8	40	20
166	Euphorbiaceae	<i>Mallotus peltatus</i> (Geisel.) Müll.Arg.	10	27.5	33.74	7	11	0	11	8	3	0	5	10	29	16
661	Symplocaceae	<i>Symplocos triccocata</i> Noot.	10	27.5	15.04	37	0	0	0	0	0	0	0	6	48	9
307	Burseraceae	<i>Dacryodes laxa</i> A.W.Benn. H.J.Lam	10	27.4	22.11	11	16	0	4	16	0	0	0	4	36	13
866	Dipterocarpaceae	<i>Vatica vinosa</i> P.S.Ashton	10	27.4	12.32	8	6	0	0	0	0	0	8	0	52	26
944	Polygalaceae	<i>Xanthophyllum macrophyllum</i> Baker	10	27.3	20.6	13	29	2	0	0	12	0	4	0	36	3
1262	Moraceae	<i>Ficus crassiramea</i> Miq.	10	27.3	26.24	0	4	0	9	2	3	11	7	19	32	14
897	Opiliaceae	<i>Champerea manillana</i> Blume Merr.	10	27.2	11.94	4	0	0	0	4	3	0	12	12	52	13
1025	Sapindaceae	<i>Harpullia arborea</i> Radlk.	10	27.2	20.42	19	0	0	0	0	2	0	1	8	40	29
1067	Meliaceae	<i>Aglaia silvestris</i> M.Roem. Merr.	10	27.2	34.6	12	7	0	0	1	1	0	6	23	29	21

Table S5.1. (continued).

sp#	Family	Species	Cluster Group	IndVal	Area (in %)	1	2	3	4	5	6	7	8	9	10	11	
1117	Caesalpiniaceae	<i>Bauhinia lambiana</i> Baker	10	27.2	6.21	0	1	0	0	0	0	0	2	0	2	73	22
1207	Myristicaceae	<i>Knema korthalsii</i> Warb. subsp. <i>rimosa</i> W.J.de Wilde	10	27.2	7.05	12	0	0	0	0	0	0	0	15	68	4	
81	Euphorbiaceae	<i>Antidesma venenosum</i> J.J.Sm.	10	27.1	36.69	22	12	6	0	7	5	0	8	1	29	11	
534	Oxalidaceae	<i>Sarcotheca diversifolia</i> Miq. Hallier f.	10	27.1	35.37	10	7	0	0	0	10	3	5	10	29	26	
616	Taccaceae	<i>Tacca palmata</i> Blume	10	27.1	18.42	4	0	1	23	0	4	3	7	15	39	5	
1001	Rosaceae	<i>Prunus grisea</i> C.Muell. Kalkman var. <i>tomentosa</i> Koord. & Veleton Kalkman	10	27.1	13.5	10	31	0	0	0	1	0	10	0	46	2	
1094	Meliaceae	<i>Pseudoclausena chrysogyne</i> Miq. T.Clark	10	27.1	23.13	7	0	0	3	7	0	0	4	21	36	22	
7	Annonaceae	<i>Cyathostemma excelsum</i> Hook.f. & Thomson J.Sinclair	10	27	27.05	9	12	0	2	0	0	1	6	8	33	27	
236	Dilleniaceae	<i>Tetracera akara</i> Burm.f. Merr.	10	27	29.7	19	8	0	0	0	0	1	7	2	33	31	
342	Dichapetalaceae	<i>Dichapetalum gelonioides</i> Roxb. Engl. subsp. <i>pilosum</i> Leenh.	10	27	16.92	23	0	0	4	0	0	0	0	1	45	27	
479	Ericaceae	<i>Vaccinium bancanum</i> Miq. var. <i>bancanum</i>	10	27	36.5	22	19	3	9	2	3	1	0	6	27	7	
1023	Sapindaceae	<i>Guioa pterorhachis</i> Welzen	10	27	5.47	6	0	0	0	0	0	8	4	3	78	2	
1232	Myristicaceae	<i>Myristica papyracea</i> J.Sinclair	10	27	23.48	0	0	0	0	0	4	3	6	15	36	35	
549	Fagaceae	<i>Castanopsis foxworthyi</i> Schottky	10	26.9	20.54	23	12	0	0	13	0	1	0	8	38	5	
687	Anacardiaceae	<i>Mangifera decandra</i> Ding Hou	10	26.9	14.27	0	3	0	0	0	0	18	0	10	45	24	
180	Euphorbiaceae	<i>Pimelodendron zanthogyne</i> J.J.Sm.	10	26.8	18.57	1	36	0	0	0	5	0	5	0	37	14	
1250	Moraceae	<i>Artocarpus rigidus</i> Blume subsp. <i>rigidus</i>	10	26.8	19.4	11	0	0	3	8	0	0	2	12	40	24	
681	Anacardiaceae	<i>Gluta oba</i> Merr. Ding Hou	10	26.7	9.86	0	1	0	3	4	7	1	3	21	54	5	
205	Convolvulaceae	<i>Erycibe borneensis</i> Merr. Hoogland var. <i>borneensis</i>	10	26.6	6.37	9	0	0	0	0	0	0	2	7	72	10	
316	Burseraceae	<i>Dacryodes rugosa</i> Blume H.J.Lam var. <i>rugosa</i>	10	26.6	28.38	10	30	0	0	0	2	1	2	7	30	18	
742	Dipterocarpaceae	<i>Dryobalanops lanceolata</i> Burck	10	26.6	27.19	16											

Table S5.1. (continued).

sp#	Family	Species	Cluster Group	IndVal	Area (in %)	1	2	3	4	5	6	7	8	9	10	11
603	Cyperaceae	<i>Paramapania radians</i> C.B. Clarke Uittien	10	25.6	23.25	4	25	0	0	0	27	2	2	3	32	5
858	Dipterocarpaceae	<i>Vatica oblongifolia</i> Hook.f. subsp. <i>multinervosa</i>	10	25.6	12.85	0	15	0	0	0	5	4	0	4	46	25
875	Araliaceae	<i>Schefflera elliptica</i> Blume Harms	10	25.6	23.62	26	0	3	5	12	0	0	1	8	35	9
1053	Meliaceae	<i>Aglaia korthalsii</i> Miq.	10	25.6	21.29	26	0	0	0	0	0	0	4	2	39	29
1143	Caesalpinaceae	<i>Peltophorum racemosum</i> Merr.	10	25.6	13.51	0	0	0	0	0	2	0	32	2	49	14
535	Oxalidaceae	<i>Sarcotheca glauca</i> Hallier	10	25.5	20.64	1	1	0	10	30	0	0	0	22	34	2
539	Violaceae	<i>Rinorea anguifera</i> Lour. Kuntze	10	25.5	33.29	6	20	0	6	8	16	2	9	4	27	2
1200	Myristicaceae	<i>Horsfieldia polyspherula</i> Hook.f. emend. King J.Sinclair var. <i>sumatrana</i> Miq. W.J.de Wilde	10	25.5	34.64	12	22	0	0	0	1	2	8	16	27	12
1247	Moraceae	<i>Artocarpus nitidus</i> Trécul	10	25.5	32.44	14	4	0	0	3	2	3	5	21	29	18
1315	Moraceae	<i>Prainea limpato</i> Miq. Beumée ex K.Heyne subsp. <i>limpato</i>	10	25.5	20.61	2	3	0	0	0	0	11	2	18	36	28
64	Annonaceae	<i>Woodiellantha sympetala</i> Merr. S.Rauschert	10	25.4	11.1	18	0	0	0	0	0	0	2	0	54	25
697	Anacardiaceae	<i>Pentaspadon motleyi</i> Hook.f.	10	25.4	34.43	3	19	0	5	6	3	3	8	11	27	16
1051	Meliaceae	<i>Aglaia forbesii</i> King	10	25.4	21.71	11	6	1	1	0	16	4	3	11	35	10
1255	Moraceae	<i>Ficus annulata</i> Blume	10	25.4	41.75	8	12	0	1	0	3	1	14	18	26	17
1078	Meliaceae	<i>Chisocheton pentandrus</i> Blanco Merr. subsp. <i>medius</i> Mabb.	10	25.3	22.58	22	0	0	0	0	0	0	6	9	37	26
1123	Caesalpinaceae	<i>Caesalpinia crista</i> L.	10	25.3	11.88	0	0	0	6	15	0	0	3	21	48	8
206	Convolvulaceae	<i>Erycibe glomerata</i> Blume subsp. <i>angustifolia</i> Hallier f. Hoogland	10	25.2	8.22	18	0	0	0	0	0	1	0	0	62	18
903	Menispermaceae	<i>Diploclisia kunstleri</i> King Diels	10	25.2	16.15	18	24	0	0	0	4	0	0	7	40	6
1047	Meliaceae	<i>Aglaia aspera</i> Teijsm. & Binn.	10	25.2	13.84	0	35	0	0	0	4	3	11	6	41	0
1103	Meliaceae	<i>Walsura villamilii</i> Merr.	10	25.2	4.19	0	0	0	0	0	0	0	0	0	87	13
1259	Moraceae	<i>Ficus borneensis</i> Kochummen	10	25.2	26.73	18	3	5	0	19	14	0	3	5	32	0
257	Sonneratiaceae	<i>Duabanga moluccana</i> Blume	10	25.1	39.78	16	12	0	0	3	8	1	4	9	26	20
1281	Moraceae	<i>Ficus lepicarpa</i> Blume	10	25.1	30.5	12	22	3	0	0	10	7	2	6	28	9
88	Euphorbiaceae	<i>Aporosa frutescens</i> Blume	10	25	25.56	20	0	0	2	0	0	0	13	8	35	23
862	Dipterocarpaceae	<i>Vatica sarawakensis</i> Heim	10	25	38.59	14	18	0	5	11	1	0	5	7	26	14
1209	Myristicaceae	<i>Knema latericia</i> Elmer subsp. <i>albifolia</i> Sinclair W.J.de Wilde	10	25	24.1	4	25	0	0	0	0	2	3	7	32	26
397	Rhizophoraceae	<i>Bruguiera parviflora</i> Wight & Arn.	10	24.9	11.71	1	0	0	15	2	3	0	3	30	46	0
984	Mimosaceae	<i>Archidendron clypearia</i> Jack I.C.Nielsen	10	24.9	40.41	11	3	4	1	0	11	6	8	19	25	11
991	Mimosaceae	<i>Archidendron microcarpum</i> Benth. I.C.Nielsen	10	24.9	19.8	7	0	0	0	0	0	0	7	15	39	32
1142	Caesalpinaceae	<i>Peltophorum pterocarpum</i> DC. Backer ex K.Heyne	10	24.9	10.28	0	0	0	3	8	0	0	3	31	51	5
190	Burmanniaceae	<i>Burmannia coelestis</i> D.Don	10	24.8	17.51	0	1	0	5	8	4	4	2	35	37	3
530	Ochnaceae	<i>Gomphia serrata</i> Gaertn. Kanis	10	24.8	35.28	15	20	0	0	11	1	1	3	8	27	13
1	Annonaceae	<i>Alphonsea javanica</i> Scheff.	10	24.7	11.81	6	0	0	0	0	0	0	0	5	50	39
290	Burseraceae	<i>Canarium denticulatum</i> Blume f. <i>fissistipulum</i> Miq. Leenh.	10	24.7	33.78	16	14	0	0	0	8	2	4	24	27	6
351	Flacourtiaceae	<i>Casearia grewiaefolia</i> Vent. var. <i>gelonioides</i>	10	24.7	16.66	29	2	0	0	0	0	1	0	2	43	22
851	Dipterocarpaceae	<i>Vatica havilandii</i> Brandis	10	24.7	15.55	0	9	0	0	11	5	0	19	13	42	2
249	Gnetaceae	<i>Gnetum klossii</i> Merr. ex Markgr.	10	24.6	28.7	6	17	1	0	0	25	4	8	9	29	2
295	Burseraceae	<i>Canarium littorale</i> Blume f. <i>littorale</i>	10	24.6	26.02	22	1	0	0	0	4	9	9	34	21	
329	Connaraceae	<i>Agelaea borneensis</i> Hook.f. Merr.	10	24.6	37.95	9	13	0	2	6	4	5	1	12	26	23
1210	Myristicaceae	<i>Knema latericia</i> Elmer subsp. <i>ridleyi</i> Gand. W.J.de Wilde f. <i>olivacea</i> W.J.de Wilde	10	24.6	29.47	28	0	1	0	2	0	1	7	6	32	22
328	Burseraceae	<i>Triamnia malaccensis</i> Hook.f.	10	24.5	16.1	5	0	0	0	0	0	0	0	14	42	39
806	Dipterocarpaceae	<i>Shorea leprosa</i> Miq.	10	24.5	41.9	6	8	0	7	0	7	2	9	19	25	19
29	Annonaceae	<i>Neo-uvaria acuminatissima</i> Miq. Airy Shaw	10	24.4	31.56	14	2	0	0	7	1	10	4	6	30	26
160	Euphorbiaceae	<i>Mallotus lackeyi</i> Elmer	10	24.4	17.02	15	0	0	0	0	0	0	1	10	42	32
612	Vitaceae	<i>Leea aculeata</i> Blume ex Spreng.	10	24.4	36.38	15	11	0	0	0	1	1	12	9	28	22
859	Dipterocarpaceae	<i>Vatica oblongifolia</i> Hook.f. subsp. <i>oblongifolia</i>	10	24.4	23.56	3	8	0	7	0	1	18	3	11	32	19
271	Thymelaeaceae	<i>Gonystylus micranthus</i> Airy Shaw	10	24.3	16.21	0	1	0	0	28	1	0	17	9	41	3
561	Fagaceae	<i>Lithocarpus conocarpus</i> Oudem. Rehder	10	24.2	37.81	20	14	2	0	0	6	3	3	10	26	14

Table S5.1. (continued).

sp#	Family	Species	Cluster Group	IndVal	Area (in %)	1	2	3	4	5	6	7	8	9	10	11
774	Dipterocarpaceae	<i>Shorea atrinervosa</i> Symington	10	24.2	39.16	9	10	0	8	11	3	1	1	17	25	15
1033	Sapindaceae	<i>Mischocarpus sundaicus</i> Blume	10	24.2	29.46	19	0	2	0	0	8	6	4	11	31	19
404	Rhizophoraceae	<i>Gynotroches axillaris</i> Blume	10	24.1	35.89	18	14	3	4	4	4	4	4	14	26	5
1122	Caesalpinaceae	<i>Caesalpinia bonduc</i> L. Roxb.	10	24.1	7.73	0	0	0	2	2	0	0	1	19	60	16
675	Anacardiaceae	<i>Buchanania sessilifolia</i> Blume	10	24	40.84	18	14	1	1	0	1	1	9	7	26	22
1257	Moraceae	<i>Ficus aurita</i> Reinw. ex Blume	10	24	23.39	22	0	3	0	0	2	0	17	15	35	4
94	Euphorbiaceae	<i>Aporosa nitida</i> Merr.	10	23.9	38.94	8	15	0	2	1	6	5	7	8	25	22
266	Thymelaeaceae	<i>Gonystylus affinis</i> Radlk.	10	23.9	18.53	0	10	0	7	9	2	3	0	21	35	13
292	Burseraceae	<i>Canarium dichotomum</i> Blume Miq.	10	23.9	31.33	15	12	2	0	0	2	9	2	5	29	25
298	Burseraceae	<i>Canarium littorale</i> Blume f. <i>tomentosum</i> Blume Leenh.	10	23.9	30.48	13	21	0	0	5	0	2	6	6	29	18
300	Burseraceae	<i>Canarium merrillii</i> H.J.Lam	10	23.9	13.47	29	0	10	1	3	2	0	0	10	45	0
712	Dipterocarpaceae	<i>Dipterocarpus acutangulus</i> Vesque	10	23.9	40.26	12	17	0	9	1	3	3	3	11	24	16
1253	Moraceae	<i>Ficus adenasperma</i> Miq.	10	23.9	16.65	7	15	0	0	11	0	0	8	1	40	18
37	Annonaceae	<i>Phaeanthus splendens</i> Miq.	10	23.8	27.29	1	1	0	1	16	2	14	4	10	30	20
49	Annonaceae	<i>Polyalthia motleyana</i> Hook.f. Airy Shaw	10	23.8	18.74	15	22	0	0	4	0	0	6	11	36	5
1013	Sapindaceae	<i>Allophylus cobbe</i> L. Raeusch.	10	23.8	30.69	20	7	0	1	0	0	0	11	9	30	21
368	Flacourtiaceae	<i>Hydnocarpus sumatrana</i> Miq. Koord.	10	23.7	28.12	11	2	1	0	0	18	1	4	22	30	11
935	Polygalaceae	<i>Polygala venenosa</i> Juss.	10	23.7	23.98	20	4	11	0	0	29	0	4	0	33	0
945	Polygalaceae	<i>Xanthophyllum neglectum</i> Meijden	10	23.7	22.68	2	0	0	0	0	0	1	31	21	35	9
1072	Meliaceae	<i>Aphanamixis borneensis</i> Harms	10	23.7	35.04	17	18	1	1	6	0	0	11	8	27	12
1190	Myristicaceae	<i>Horsfieldia carnosa</i> Warb.	10	23.7	7.86	0	0	0	0	42	0	0	1	0	57	0
150	Euphorbiaceae	<i>Macaranga tanarius</i> L. Müll.Arg.	10	23.6	17.1	10	0	0	0	0	0	1	5	4	41	38
839	Dipterocarpaceae	<i>Shorea smithiana</i> Symington	10	23.6	12.99	1	0	0	0	2	0	0	9	8	47	33
5	Annonaceae	<i>Cyathocalyx magnifica</i> Diels	10	23.5	34.6	15	11	6	0	2	6	4	9	6	27	14
159	Euphorbiaceae	<i>Mallotus korthalsii</i> Müll.Arg.	10	23.5	32.28	8	10	0	3	0	13	8	5	11	27	15
172	Euphorbiaceae	<i>Moultonianthus leembruggianus</i> Boerl. & Koord. Steenis	10	23.5	25.37	2	24	1	0	0	5	13	3	10	29	14
365	Flacourtiaceae	<i>Hydnocarpus elmeri</i> Merr.	10	23.5	13.02	2	5	0	0	0	1	0	20	1	47	24
951	Polygalaceae	<i>Xanthophyllum resupinatum</i> Meijden	10	23.5	24.51	6	29	4	0	0	18	3	6	0	30	5
139	Euphorbiaceae	<i>Macaranga hypoleuca</i> Rchb.f. & Zoll. Müll.Arg.	10	23.4	35.23	8	0	0	5	0	5	2	10	21	27	22
322	Burseraceae	<i>Santiria megaphylla</i> Kalkman	10	23.4	12.14	0	31	0	0	9	1	6	2	4	42	5
425	Celastraceae	<i>Lophopetalum multinervium</i> Ridl.	10	23.4	30.13	12	0	0	0	24	1	3	1	16	29	13
666	Ulmaceae	<i>Gironniera subaequalis</i> Planch.	10	23.4	42.09	15	12	5	0	3	13	2	11	6	24	8
756	Dipterocarpaceae	<i>Hopea micrantha</i> Hook.f.	10	23.4	13.05	0	2	0	0	2	0	9	3	8	45	30
978	Mimosaceae	<i>Albizia corniculata</i> Lour. Druce	10	23.4	4.08	1	0	0	0	0	0	0	0	0	85	14
1256	Moraceae	<i>Ficus apiocarpa</i> Miq.	10	23.4	8.67	0	0	0	0	25	0	0	2	10	55	7
367	Flacourtiaceae	<i>Hydnocarpus subfalcata</i> Merr.	10	23.3	28.42	11	27	4	0	0	9	3	3	7	28	8
915	Linaceae	<i>Indorouchera griffithiana</i> Planch. Hallier f.	10	23.3	41.24	7	17	0	3	0	14	7	7	13	23	9
220	Dilleniaceae	<i>Dillenia pulchella</i> Jack Gilg	10	23.2	18											

Table S5.1. (continued).

sp#	Family	Species	Cluster Group	IndVal	Area (in %)	1	2	3	4	5	6	7	8	9	10	11
57	Annonaceae	<i>Pseuduvaria borneensis</i> Y.C.F.Su & R.M.K.Saunders	10	22.6	27.35	17	5	0	0	0	0	4	10	6	31	26
196	Combretaceae	<i>Combretum nigrescens</i> King	10	22.6	8.29	10	0	0	0	0	0	0	0	10	58	22
200	Combretaceae	<i>Terminalia catappa</i> L.	10	22.6	12.2	0	0	0	2	16	0	0	9	24	45	5
302	Burseraceae	<i>Canarium odontophyllum</i> Miq. f. <i>odontophyllum</i>	10	22.6	28.27	24	3	1	0	7	0	1	10	0	31	23
812	Dipterocarpaceae	<i>Shorea multiflora</i> Burck Symington	10	22.6	39.15	4	23	1	1	8	10	5	11	7	23	8
1249	Moraceae	<i>Artocarpus rigidus</i> Blume	10	22.6	26.86	12	3	0	0	6	2	13	6	32	25	
1273	Moraceae	<i>Ficus glandulifera</i> Wall. ex Miq. King	10	22.6	24.22	22	5	4	0	2	6	0	14	32	15	
173	Annonaceae	<i>Maasia hypoleuca</i> Hook.f. & Thomson. Mols. P.J.A.Keßler & S.H.Rogstad	10	22.5	17.44	0	19	0	0	2	12	3	7	19	35	2
114	Euphorbiaceae	<i>Bridelia stipularis</i> L. Blume	10	22.5	7.05	15	0	0	0	0	0	0	9	63	13	
227	Dilleniaceae	<i>Saurauia ferox</i> Korth.	10	22.4	20.89	14	29	3	0	0	17	0	2	2	32	2
679	Anacardiaceae	<i>Gluta beccarii</i> Engl. Ding Hou	10	22.4	8.97	0	12	0	0	23	0	0	1	13	50	0
975	Mimosaceae	<i>Acacia pseudointsia</i> Miq.	10	22.4	9.29	12	0	0	0	0	0	1	0	55	32	
1054	Meliaceae	<i>Aglaia lawii</i> Wight C.J.Saldanha	10	22.4	37.6	12	16	2	0	7	10	0	2	12	24	15
602	Cyperaceae	<i>Mapania latifolia</i> Uittien	10	22.3	15.1	44	0	0	0	0	0	6	0	44	5	
1235	Nepenthaceae	<i>Nepenthes gracilis</i> Korth.	10	22.2	34.1	6	2	0	3	19	7	1	6	22	26	10
1312	Moraceae	<i>Ficus xylophylla</i> Wall. ex Miq. Miq.	10	22.2	13.26	3	6	0	2	32	0	0	1	5	42	9
684	Anacardiaceae	<i>Gluta wallichii</i> Hook.f. Ding Hou	10	22.1	34.06	9	5	0	0	16	1	2	5	15	26	19
1058	Meliaceae	<i>Aglaia luzoniensis</i> Vidal Merr. & Rolfe	10	22.1	9.85	33	0	0	0	0	0	10	0	55	3	
215	Dilleniaceae	<i>Dillenia beccariana</i> Martelli	10	22	25.28	1	17	0	0	1	16	1	22	8	30	4
952	Polygalaceae	<i>Xanthophyllum reticulatum</i> Chodat	10	22	11.24	18	0	0	0	0	1	2	0	50	29	
1087	Meliaceae	<i>Dysoxylum cyrtobotryum</i> Miq.	10	22	46.95	15	4	3	0	5	14	2	8	8	23	18
1135	Caesalpiniaceae	<i>Cynometra ramiflora</i> L.	10	22	14.07	0	0	0	0	18	0	0	1	36	40	5
1196	Myristicaceae	<i>Horsfieldia laticostata</i> J.Sinclair W.J.de Wilde	10	22	31.58	0	11	0	14	12	9	6	5	14	25	3
717	Dipterocarpaceae	<i>Dipterocarpus confertus</i> Slooten	10	21.9	18.99	5	0	0	0	3	4	1	21	36	30	
1305	Moraceae	<i>Ficus sundaica</i> Blume	10	21.9	43.57	10	4	1	0	18	6	5	10	17	23	6
129	Euphorbiaceae	<i>Macaranga auriculata</i> Merr. Airy Shaw	10	21.8	29.16	20	3	1	0	0	4	18	2	30	20	
555	Fagaceae	<i>Castanopsis psilophylla</i> Soepadmo	10	21.8	11.55	34	0	0	0	0	0	0	4	49	12	
1057	Meliaceae	<i>Aglaia leucophylla</i> King	10	21.8	26.64	12	25	0	0	0	2	0	17	5	30	10
1307	Moraceae	<i>Ficus tinctoria</i> G.Forst. subsp. <i>gibbosa</i> Blume Corner	10	21.8	29.56	19	26	3	0	0	12	0	5	1	27	5
34	Annonaceae	<i>Orophea myriantha</i> Merr.	10	21.7	14.48	14	0	0	0	0	0	0	18	8	44	17
203	Combretaceae	<i>Terminalia phellocarpa</i> King	10	21.7	14.19	0	27	0	0	0	8	0	9	13	38	4
252	Gnetaceae	<i>Gnetum leptostachyum</i> Blume	10	21.7	32.09	13	18	2	0	0	23	0	9	0	27	7
301	Burseraceae	<i>Canarium odontophyllum</i> Miq. f. <i>multifidum</i> H.J.Lam Leenh.	10	21.7	6.62	1	0	0	0	0	0	0	1	64	34	
799	Dipterocarpaceae	<i>Shorea hypoleuca</i> Meijer	10	21.7	3.73	11	0	0	0	0	0	0	1	86	2	
1181	Loranthaceae	<i>Scurrula ferruginea</i> Jack Danser	10	21.7	25.67	7	1	0	0	22	7	0	4	20	30	9
71	Euphorbiaceae	<i>Antidesma montanum</i> Blume	10	21.6	46.55	13	11	0	4	15	5	1	6	12	22	12
246	Gnetaceae	<i>Gnetum gnemon</i> L. var. <i>brunonianum</i> Griff. Markgr.	10	21.6	12.16	0	22	0	0	0	23	4	2	8	41	0
332	Connaraceae	<i>Connarus euphlebius</i> Merr. var. <i>euphlebius</i>	10	21.6	20.83	5	0	0	0	0	0	7	2	33	33	19
378	Flacourtiaceae	<i>Ryparosa kunstleri</i> King	10	21.6	16.32	0	0	0	0	0	2	1	24	25	39	10
736	Dipterocarpaceae	<i>Dipterocarpus validus</i> Blume	10	21.6	15.38	5	0	0	0	6	0	0	1	12	40	35
865	Dipterocarpaceae	<i>Vatica umbonata</i> Hook.f. Burck	10	21.6	43.79	15	11	0	2	3	2	3	5	14	23	22
6	Annonaceae	<i>Cyathocalyx ramuliflorus</i> Maingay ex Hook.f. & Thomson Scheff.	10	21.5	4.91	0	0	0	0	0	4	3	11	0	74	7
214	Datsicaceae	<i>Octomeles sumatrana</i> Miq.	10	21.5	31.39	0	11	0	0	8	3	4	9	25	26	14
1030	Sapindaceae	<i>Lepisanthes rubiginosa</i> Roxb. Leenh.	10	21.5	8.53	1	0	0	0	3	0	0	14	6	56	20
162	Euphorbiaceae	<i>Mallotus minimifolius</i> S.E.C. Sierra	10	21.4	30.28	19	21	0	0	0	2	5	8	3	28	15
700	Anacardiaceae	<i>Semecarpus cuneiformis</i> Blanco	10	21.4	16.86	14	0	0	0	6	0	0	2	1	40	38
1065	Meliaceae	<i>Aglaia rivularis</i> Merr.	10	21.3	13.58	22	0	0	0	0	0	1	0	6	44	26
1176	Loranthaceae	<i>Macrosolen cochinchinensis</i> Lour. Tiegh.	10	21.3	41.34	11	11	1	0	20	6	1	2	17	23	9
8	Annonaceae	<i>Cyathostemma hookeri</i> King	10	21.2	8.79	0	0	0	0	0	2	0	38	0	56	4
324	Burseraceae	<i>Santiria oblongifolia</i> Blume	10	21.2	34.86	5	16	0	1	6	0	6	1	18	24	24
1237	Nepenthaceae	<i>Nepenthes rafflesiana</i> Jack	10	21.2	37.89	3	7	0	16	18	5	4	2	16	23	7
503	Loganiaceae	<i>Strychnos villosa</i> A.W.Hill	10	21.1	10	1	0	0	0	0	0	0	0	20	49	29
1202	Myristicaceae	<i>Horsfieldia splendida</i> W.J.de Wilde	10	21.1	26.29	7	17	0	7	14	9	1	1	10	27	6
744	Dipterocarpaceae	<i>Dryobalanops rappa</i> Becc.	10	21	13.38	0	0	0	27	14	1	1	1	16	38	2

Table S5.1. (continued).

sp#	Family	Species	Cluster Group	IndVal	Area (in %)	1	2	3	4	5	6	7	8	9	10	11	
883	Liliaceae	<i>Peliasanthes tetra</i> Andrews	10	21	4.01	0	0	0	0	0	0	2	0	0	16	79	3
1153	Boraginaceae	<i>Pteleocarpa lamponga</i> Miq. Bakh.	10	21	13.8	15	0	0	0	0	0	0	0	18	42	24	
244	Gnetaceae	<i>Gnetum cuspidatum</i> Blume	10	20.9	44.82	11	21	6	1	5	10	0	11	9	21	5	
864	Dipterocarpaceae	<i>Vatica umbonata</i> Hook.f. Burck subsp. <i>umbonata</i>	10	20.9	27.48	12	22	0	1	8	0	2	12	2	28	12	
1220	Myristicaceae	<i>Knema pedicellata</i> W.J.de Wilde	10	20.9	10.42	0	3	0	31	3	5	0	3	10	44	1	
1244	Moraceae	<i>Artocarpus glaucus</i> Blume	10	20.9	17.8	2	0	0	0	3	0	11	8	11	36	30	
11	Annonaceae	<i>Goniothalamus roseus</i> Stapf	10	20.8	9.85	41	0	0	0	0	0	0	0	0	53	7	
340	Connaraceae	<i>Rourea minor</i> Gaertn. Leenh.	10	20.8	47.6	11	19	0	5	3	12	2	9	8	21	11	
1102	Meliaceae	<i>Walsura pinnata</i> Hassk.	10	20.8	24.66	10	1	0	0	0	4	4	16	16	31	18	
175	Euphorbiaceae	<i>Neoscortechinia philippinensis</i> Merr. Welzen	10	20.7	40.03	13	17	0	0	0	0	4	2	9	15	23	18
198	Combretaceae	<i>Lumnitzera littorea</i> Jack Voigt	10	20.7	5.18	0	0	0	0	0	0	0	4	21	68	7	
327	Burseraceae	<i>Santiria tomentosa</i> Blume	10	20.7	43.34	5	18	1	0	5	12	8	4	12	21	13	
643	Symplocaceae	<i>Symplocos crassipes</i> C.B.Clarke var. <i>ernae</i> Brand Noot.	10	20.7	36.49	19	6	11	0	0	6	11	8	3	25	12	
723	Dipterocarpaceae	<i>Dipterocarpus globosus</i> Vesque	10	20.7	3.24	0	6	0	0	1	0	3	2	1	88	1	
802	Dipterocarpaceae	<i>Shorea johorensis</i> Foxw.	10	20.7	25.45	7	0	0	0	2	0	0	12	19	31	29	
1288	Moraceae	<i>Ficus midotis</i> Corner	10	20.7	31.64	19	12	5	0	0	4	0	10	12	27	12	
142	Euphorbiaceae	<i>Macaranga lowii</i> King ex Hook.f.	10	20.6	26.42	8	0	0	0	3	1	1	12	15	30	30	
914	Linaceae	<i>Ctenolophon parvifolius</i> Oliv.	10	20.6	32.97	8	5	0	3	24	7	1	2	18	25	8	
1018	Sapindaceae	<i>Dimocarpus longan</i> Lour. subsp. <i>malesianus</i> Leenh.	10	20.6	47.07	8	19	0	4	0	3	5	12	8	21	20	
526	Icacinaceae	<i>Stemonurus malaccensis</i> Mast. Sleumer	10	20.5	48.44	15	10	1	11	3	3	5	7	10	21	13	
665	Ulmaceae	<i>Gironniera parvifolia</i> Planch.	10	20.5	12.11	42	0	4	0	0	0	3	0	0	47	4	
993	Mimosaceae	<i>Leucaena leucocephala</i> Lam. de Wit	10	20.5	14.17	15	0	0	0	0	0	1	0	1	42	41	
1020	Sapindaceae	<i>Dodonaea viscosa</i>															

Table S5.1. (continued).

sp#	Family	Species	Cluster Group	IndVal	Area (in %)	1	2	3	4	5	6	7	8	9	10	11	
16	Annonaceae	<i>Maasia glauca</i> Hassk. Mols. P.J.A.Keßler & S.H.Rogstad	10	19.6	42.64	4	20	0	0	0	7	7	7	20	21	15	
563	Fagaceae	<i>Lithocarpus dasystachyus</i> Miq. Rehder	10	19.6	19.61	0	4	0	19	17	4	8	1	16	30	2	
90	Euphorbiaceae	<i>Aporosa grandistipula</i> Merr.	10	19.5	47.17	6	16	1	0	5	7	10	11	9	20	16	
182	Euphorbiaceae	<i>Sauropus bacciformis</i> L. Airy Shaw	10	19.5	2.87	0	0	0	0	0	0	0	1	1	93	5	
779	Dipterocarpaceae	<i>Shorea bullata</i> P.S.Ashton	10	19.5	3.19	0	6	0	0	1	0	3	3	1	86	1	
1144	Caesalpiniaceae	<i>Saraca declinata</i> Jack Miq.	10	19.5	45.13	9	20	1	0	0	16	2	11	5	21	13	
727	Dipterocarpaceae	<i>Dipterocarpus kerrii</i> King	10	19.4	6.26	3	0	0	0	0	0	10	0	63	23		
1119	Caesalpiniaceae	<i>Bauhinia semibifida</i> Roxb. var. <i>semibifida</i>	10	19.4	47.7	7	12	0	4	3	12	8	10	8	20	15	
125	Euphorbiaceae	<i>Homalanthus populneus</i> Geiseler Pax	10	19.3	48.77	11	15	1	0	7	8	4	6	12	20	15	
402	Rhizophoraceae	<i>Ceriops tagal</i> Perr. C.B.Rob.	10	19.3	8.71	0	0	0	0	1	0	0	5	26	50	18	
849	Dipterocarpaceae	<i>Vatica dulitensis</i> Symington	10	19.3	24.68	27	8	2	2	3	3	4	0	5	30	16	
987	Mimosaceae	<i>Archidendron cockburnii</i> L.C.Nielsen	10	19.3	9.01	12	0	0	0	0	0	0	0	0	52	36	
1038	Sapindaceae	<i>Nephelium ramboutan-ake</i> Labill. Leenh.	10	19.3	37.8	22	23	2	0	0	0	1	5	8	23	16	
286	Burseraceae	<i>Canarium asperum</i> Benth. var. <i>asperum</i>	10	19.2	10.82	10	0	0	0	0	2	5	13	0	47	23	
824	Dipterocarpaceae	<i>Shorea parvistipulata</i> Heim	10	19.2	44.35	11	14	1	7	7	10	1	11	4	21	13	
1265	Moraceae	<i>Ficus deltoidea</i> Jack subsp. <i>deltoidea</i>	10	19.2	47.17	13	19	9	0	10	9	2	6	7	20	4	
947	Polygalaceae	<i>Xanthophyllum pedicellatum</i> Meijden	10	19.1	4.41	1	0	0	0	0	0	0	0	24	71	4	
1071	Meliaceae	<i>Aglaia tomentosa</i> Teijsm. & Binn.	10	19.1	55.17	13	11	1	0	3	8	2	14	11	19	17	
803	Dipterocarpaceae	<i>Shorea kudatensis</i> G.H.S.Wood ex Meijer	10	19	5.96	4	0	0	0	0	0	0	1	31	60	5	
828	Dipterocarpaceae	<i>Shorea pubistyla</i> P.S.Ashton	10	19	3.05	0	1	0	2	0	1	0	0	8	87	1	
1139	Caesalpiniaceae	<i>Intsia bijuga</i> Colebr. Kuntze	10	19	9.71	0	0	0	0	35	0	0	4	8	46	7	
18	Annonaceae	<i>Maasia sumatrana</i> Miq. Mols. P.J.A.Keßler & S.H.Rogstad	10	18.9	49.76	13	19	3	0	2	7	4	9	9	20	14	
357	Flacourtiaceae	<i>Homalium caryophyllaceum</i> Zoll. & Moritzi Benth.	10	18.9	22.29	2	0	0	11	14	0	0	1	28	29	14	
893	Oleaceae	<i>Ochanostachys amentacea</i> Mast.	10	18.9	39.99	7	12	0	5	4	2	11	6	10	22	20	
83	Euphorbiaceae	<i>Aporosa benthamiana</i> Hook.f.	10	18.8	35.18	22	22	2	0	0	3	7	6	3	24	11	
669	Ulmaceae	<i>Trema tomentosa</i> Roxb. Hara	10	18.7	45.98	10	5	1	0	3	2	11	13	16	21	18	
741	Dipterocarpaceae	<i>Dryobalanops keithii</i> Symington	10	18.7	8.36	6	0	0	0	0	0	0	3	28	50	13	
829	Dipterocarpaceae	<i>Shorea quadrinervis</i> Slooten	10	18.7	13.79	0	14	0	0	23	17	2	0	9	36	0	
415	Celastraceae	<i>Bhesa paniculata</i> Arn.	10	18.5	44.35	10	17	7	0	13	11	7	2	6	20	7	
548	Fagaceae	<i>Castanopsis evansii</i> Elmer	10	18.5	32.82	4	0	0	20	15	2	2	5	16	23	14	
691	Anacardiaceae	<i>Melanochyla castaneifolia</i> Ding Hou	10	18.5	18.16	7	12	0	0	0	0	6	4	23	32	16	
942	Polygalaceae	<i>Xanthophyllum heterophyllum</i> Meijden	10	18.5	4.33	0	0	0	0	0	0	0	0	27	70	3	
1293	Moraceae	<i>Ficus pisifera</i> Wall. ex Voigt	10	18.5	47.84	8	19	0	1	10	8	0	10	14	19	10	
319	Burseraceae	<i>Santria griffithii</i> Engl.	10	18.4	21.17	2	23	1	0	0	1	8	2	14	29	22	
361	Flacourtiaceae	<i>Homalium panayanum</i> Fern.-Vill.	10	18.4	10.71	13	0	0	0	0	0	0	0	19	45	22	
395	Rhizophoraceae	<i>Bruguiera cylindrica</i> Blume	10	18.4	9.01	0	0	0	11	29	0	0	1	12	45	2	
509	Simaroubaceae	<i>Quassia indica</i> Gaertn. Noot.	10	18.4	10.05	0	0	0	0	12	0	0	1	19	45	22	
613	Vitaceae	<i>Leea indica</i> Burm.f. Merr.	10	18.4	40.53	13	18	0	0	4	0	1	13	15	22	15	
73	Euphorbiaceae	<i>Antidesma neurocarpum</i> Miq.	10	18.3	54.69	14	13	1	0	2	7	3	14	12	19	15	
815	Dipterocarpaceae	<i>Shorea obscura</i> Meijer	10	18.3	35.19	14	19	1	0	0	13	4	4	16	22	7	
103	Euphorbiaceae	<i>Baccaurea edulis</i> Merr.	10	18.2	27.55	20	11	0	0	0	4	7	1	7	27	23	
608	Cyperaceae	<i>Scleria motleyi</i> C.B.Clark	10	18.2	13.68	31	0	0	0	0	0	0	0	2	41	26	
678	Anacardiaceae	<i>Drimycarpus luridus</i> Hook.f. Ding Hou	10	18.1	14.32	0	0	0	0	0	0	3	4	20	38	36	
1014	Sapindaceae	<i>Arytera litoralis</i> Blume	10	18.1	32.59	11	0	0	0	0	2	1	14	25	25	21	
1048	Meliaceae	<i>Aglaia crassinervis</i> Kurz ex Hiern	10	18.1	41.7	17	0	4	0	0	12	4	6	16	22	19	
65	Euphorbiaceae	<i>Agrostistachys borneensis</i> Becc.	10	17.9	25.64	11	22	1	0	13	2	3	5	11	26	7	
895	Oleaceae	<i>Scorodocarpus borneensis</i> Becc.	10	17.9	42.56	4	11	2	0	4	11	13	10	10	20	14	
1287	Moraceae	<i>Ficus microcarpa</i> L.f.	10	17.9	30.91	4	0	0	7	23	3	5	1	18	24	14	
42	Annonaceae	<i>Polyalthia clavigera</i> King	10	17.8	7.44	0	9	0	0	0	27	4	0	0	10	49	0
255	Myricaceae	<i>Myrica esculenta</i> Buch.-Ham. ex D.Don	10	17.8	11.34	23	0	0	9	1	0	0	2	22	42	0	
356	Flacourtiaceae	<i>Flacourtia rukam</i> Zoll. & Moritzi	10	17.8	47.81	13	17	3	0	11	12	2	2	10	19	11	
430	Celastraceae	<i>Microtropis kinabaluensis</i> Merr. & Freeman	10	17.8	11.25	27	0	2	0	3	2	0	3	13	44	6	
609	Cyperaceae	<i>Scleria purpurascens</i> Steud.	10	17.8	39.79	20	15	4	0	2	0	4	7	11	22	15	
1107	Caesalpiniaceae	<i>Bauhinia excelsa</i> Blume ex Miq. Prain var. <i>excelsa</i>	10	17.8	25.14	11	0	0	0	4	0	0	10	25	28	21	

Table S5.1. (continued).

sp#	Family	Species	Cluster Group	IndVal	Area (in %)	1	2	3	4	5	6	7	8	9	10	11
306	Burseraceae	<i>Dacryodes incurvata</i> Engl. H.J.Lam	10	17.7	50.71	12	12	10	0	0	16	2	6	15	18	9
619	Hypericaceae	<i>Cratoxylum arborescens</i> Vahl Blume var. <i>borneense</i> A.C.Church & P.F.Stevens	10	17.7	33.43	7	18	2	0	4	2	10	3	17	22	14
1083	Meliaceae	<i>Dysoxylum alliaceum</i> Blume Blume	10	17.7	50.12	11	3	3	0	1	9	12	7	16	19	19
558	Fagaceae	<i>Lithocarpus caudatifolius</i> Merr. Rehder	10	17.6	14.07	19	0	0	0	0	0	0	0	15	39	27
585	Passifloraceae	<i>Adenia macrophylla</i> Blume Koord. var. <i>macrophylla</i>	10	17.6	50.11	4	12	0	0	0	8	8	11	6	17	18
735	Dipterocarpaceae	<i>Dipterocarpus stellatus</i> Vesque subsp. <i>parvus</i>	10	17.6	8.5	0	1	0	0	0	0	8	0	4	49	38
1211	Myricaceae	<i>Knema latifolia</i> Warb.	10	17.6	46.4	12	14	4	0	8	2	11	3	7	19	19
1264	Moraceae	<i>Ficus delosyce</i> Corner var. <i>obtusata</i> Corner	10	17.6	16.84	0	0	0	0	1	1	0	21	27	35	16
724	Dipterocarpaceae	<i>Dipterocarpus gracilis</i> Blume	10	17.5	32.14	17	2	0	0	10	2	2	5	21	24	17
22	Annonaceae	<i>Mezzettia parviflora</i> Becc.	10	17.4	31.67	2	7	0	8	11	1	15	0	19	22	16
393	Proteaceae	<i>Helicia robusta</i> Roxb. R.Br. ex Wall.	10	17.4	9.64	32	3	0	0	0	0	3	3	0	48	11
676	Anacardiaceae	<i>Camposperma coriaceum</i> Jack Hallier f.	10	17.4	6.53	0	0	0	0	27	0	0	6	6	55	5
850	Dipterocarpaceae	<i>Vatica globosa</i> P.S.Ashton	10	17.4	13.02	0	32	0	0	10	4	1	13	4	36	2
1022	Sapindaceae	<i>Guioa pleuropteris</i> Blume Radlk.	10	17.4	13.51	20	0	0	0	0	0	0	6	8	40	25
1100	Meliaceae	<i>Vavaea amicornum</i> Benth.	10	17.4	13.08	7	0	0	0	0	0	0	31	1	42	19
1419	Orchidaceae	<i>Liparis lacerata</i> Ridl.	10	17.3	15.89	7	19	0	0	1	0	8	8	1	34	23
204	Combretaceae	<i>Terminalia subspatulata</i> King	10	17.2	23.43	0	0	0	13	21	1	0	14	23	27	1
705	Anacardiaceae	<i>Swintonia schwenckii</i> Teijsm. & Binn. Teijsm. & Binn. ex Hook.f.	10	17.2	27.63	0	15	0	18	2	9	6	2	11	23	13
202	Combretaceae	<i>Terminalia foetidissima</i> Griff.	10	17.1	11.12	0	0	0	0	17	0	4	0	5	41	33
335	Connaraceae	<i>Connarus semidecandrus</i> Jack	10	17.1	27.54	0	9	0	6	23	0	0	2	24	24	12
519	Icacinaeae	<i>Gonocaryum macrophyllum</i> Blume Sleumer	10	17.1	9.92	9	0	0	0	4	0	0				

Table S5.1. (continued).

sp#	Family	Species	Cluster Group	IndVal	Area (in %)	1	2	3	4	5	6	7	8	9	10	11
41	Annonaceae	<i>Polyalthia cauliflora</i> Hook.f. & Thomson var. <i>desmantha</i> Hook.f. & Thomson J.Sinclair	10	15.8	18.61	8	23	1	0	1	13	0	15	1	30	9
617	Hypericaceae	<i>Cratoxylum arborescens</i> Vahl Blume	10	15.8	36.24	13	5	8	0	0	6	15	3	12	21	18
506	Simaroubaceae	<i>Brucea javanica</i> L. Merr.	10	15.7	29	10	13	0	0	0	1	2	10	17	24	23
946	Polygalaceae	<i>Xanthophyllum nigricans</i> Meijden	10	15.7	16.58	3	16	0	2	0	6	8	11	1	32	22
147	Euphorbiaceae	<i>Macaranga praestans</i> Airy Shaw	10	15.6	14.22	13	23	0	0	20	0	1	1	6	33	4
1091	Meliaceae	<i>Dysoxylum rugulosum</i> King	10	15.6	41.19	12	2	7	0	0	15	13	5	11	20	15
953	Polygalaceae	<i>Xanthophyllum stipitatum</i> A.W.Benn.	10	15.5	61.11	12	14	1	0	5	10	10	5	12	16	15
1171	Loranthaceae	<i>Lepeosteges centiflorus</i> Stapf Tiegh.	10	15.5	4.84	34	0	0	0	0	0	0	0	1	65	0
213	Convolvulaceae	<i>Merremia clemensiana</i> Ooststr.	10	15.4	13.16	10	13	0	0	0	3	1	2	4	36	30
527	Icacinaceae	<i>Stemonurus scorpioides</i> Becc.	10	15.4	10.38	0	0	0	0	27	0	0	0	29	39	5
995	Mimosaceae	<i>Parkia singularis</i> Miq.	10	15.4	26.19	9	5	11	1	2	3	19	10	8	24	8
1002	Rosaceae	<i>Prunus javanica</i> Teijsm. & Binn. Miq.	10	15.4	36.11	7	1	1	17	6	8	7	5	11	21	17
1084	Meliaceae	<i>Dysoxylum arborescens</i> Blume Miq.	10	15.2	26.49	13	0	5	0	7	1	2	10	17	25	19
682	Anacardiaceae	<i>Gluta sabahana</i> Ding Hou	10	15.1	12.93	20	0	0	0	0	0	7	15	38	20	
701	Anacardiaceae	<i>Semecarpus glaucus</i> Eng.	10	15.1	32.84	1	19	1	2	13	18	5	5	10	20	6
856	Dipterocarpaceae	<i>Vatica nitens</i> King	10	15	12.37	0	30	0	1	7	5	8	0	6	33	11
1080	Meliaceae	<i>Chisocheton polyandrus</i> Merr.	10	15	16.43	21	0	0	0	0	0	0	19	14	34	12
981	Mimosaceae	<i>Albizia rosulata</i> Kosterm. I.C.Nielsen	10	14.9	15.46	1	0	0	0	21	1	1	5	24	32	16
1226	Myristicaceae	<i>Myristica borneensis</i> Warb.	10	14.9	22.65	3	24	3	2	9	23	6	4	3	24	0
1029	Sapindaceae	<i>Lepisanthes multijuga</i> Hook.f. Leenh.	10	14.8	4.1	22	0	0	0	0	0	0	0	0	68	10
262	Thymelaeaceae	<i>Amyxa pluricornis</i> Radlk. Domke	10	14.6	28.37	0	19	5	0	9	19	12	5	9	21	1
1077	Meliaceae	<i>Chisocheton pentandrus</i> Blanco Merr.	10	14.5	7.75	22	0	0	0	0	0	0	4	0	49	25
185	Euphorbiaceae	<i>Syndyophyllum occidentale</i> Airy Shaw Welzen	10	14.4	14.67	13	0	0	0	0	0	0	11	21	34	21
533	Oxalidaceae	<i>Dapania grandifolia</i> Veldkamp	10	14.4	9.47	1	0	0	0	0	0	0	1	14	42	42
635	Lentibulariaceae	<i>Utricularia minutissima</i> Vahl	10	14.3	10.29	0	0	0	22	2	1	3	4	23	37	8
1300	Moraceae	<i>Ficus septica</i> Burm.f.	10	14.1	13.93	31	0	0	0	0	0	0	3	7	36	24
201	Combretaceae	<i>Terminalia citrina</i> Gaertn. Roxb. ex Fleming	10	14	9.01	3	0	0	0	0	0	0	0	12	43	43
821	Dipterocarpaceae	<i>Shorea pachyphylla</i> Ridl. ex Symington	10	14	15.93	0	4	0	1	15	0	17	3	18	29	12
689	Anacardiaceae	<i>Mangifera rufocostata</i> Kosterm.	10	13.9	13.86	16	0	0	0	0	0	0	0	19	34	30
718	Dipterocarpaceae	<i>Dipterocarpus conformis</i> Slooten subsp. <i>borneensis</i> P.S.Ashton	10	13.8	15.19	33	9	0	0	0	0	0	0	0	33	24
30	Annonaceae	<i>Neo-uvaria foetida</i> Maingay ex Hook.f. & Thomson Airy Shaw	10	13.7	9.84	12	0	0	0	0	0	0	3	5	41	40
78	Euphorbiaceae	<i>Antidesma punctulatum</i> Miq.	10	13.7	8.03	0	0	0	0	8	0	0	0	31	43	18
349	Flacourtiaceae	<i>Casearia capitellata</i> Blume	10	13.7	15.53	26	0	0	0	0	0	0	0	19	32	22
766	Dipterocarpaceae	<i>Hopea wyattsmithii</i> G.H.S.Wood ex P.S.Ashton	10	13.7	1.85	0	0	0	0	0	0	0	0	2	97	1
699	Anacardiaceae	<i>Semecarpus bunburyanus</i> Gibbs	10	13.6	15.32	27	0	0	0	0	0	0	5	8	33	26
983	Mimosaceae	<i>Archidendron borneense</i> Benth. I.C.Nielsen	10	13.6	22.71	5	2	0	5	21	0	1	9	21	25	10
1429	Orchidaceae	<i>Podochilus lucescens</i> Blume	10	13.5	27.07	24	1	6	0	9	8	2	12	3	24	12
31	Annonaceae	<i>Orophea alba</i> P.J.A.Kessler	10	13.4	6.48	3	0	0	0	0	0	0	2	45	47	3
383	Goodeniaceae	<i>Scaevola sericea</i> Vahl	10	13.4	2.9	0	0	0	0	0	0	0	0	9	75	16
405	Rhizophoraceae	<i>Kandelia candel</i> L. Druce	10	13.4	7.04	0	0	0	0	23	0	0	2	24	45	6
427	Celastraceae	<i>Lophopetalum sessilifolium</i> Ridl.	10	13.4	15.67	0	27	0	0	0	1	0	29	13	30	0
167	Euphorbiaceae	<i>Mallotus philippensis</i> (Lam.) Müll.Arg.	10	13.2	5.64	20	0	0	0	0	0	0	0	11	54	15
259	Sonneratiaceae	<i>Sonneratia ovata</i> Backer	10	13.2	9.54	0	0	0	0	16	0	1	2	24	38	18
1096	Meliaceae	<i>Reinwardtiadendron kinabaluense</i> Kosterm. Mabb.	10	13.1	12.18	36	0	0	0	0	0	0	4	14	37	10
186	Euphorbiaceae	<i>Triadica cochinchinensis</i> Lour.	10	13	6.56	25	0	0	0	4	0	0	6	15	49	0
725	Dipterocarpaceae	<i>Dipterocarpus grandiflorus</i> Blanco	10	12.9	5.85	0	0	0	0	0	0	0	0	8	51	41
990	Mimosaceae	<i>Archidendron kunstleri</i> Prain I.C.Nielsen subsp. <i>ashtonii</i> Nielsen	10	12.9	1.74	0	0	0	0	0	0	0	0	0	97	3
505	Simaroubaceae	<i>Allantopermum borneense</i> Forman	10	12.8	12.74	1	5	0	23	0	0	1	1	9	32	28
104	Dipterocarpaceae	<i>Shorea obovoidea</i> Slooten	10	12.8	6.06	0	36	0	0	0	0	1	16	0	46	0
814	Euphorbiaceae	<i>Baccaurea motleyana</i> Müll.Arg. Müll.Arg.	10	12.7	17.98	2	21	0	0	7	2	1	4	24	26	14
638	Symplocaceae	<i>Symplocos adenophylla</i> Wall. & G.Don var. <i>adenophylla</i> Wall. ex G.Don	10	12.7	22.11	20	4	5	0	15	10	0	7	8	25	7
923	Magnoliaceae	<i>Michelia montana</i> Blume	10	12.7	12.15	8	0	0	0	0	0	0	5	26	34	27

Table S5.1. (continued).

sp#	Family	Species	Cluster Group	IndVal	Area (in %)	1	2	3	4	5	6	7	8	9	10	11
19	Annonaceae	<i>Marsypopetalum pallidum</i> Blume Backer	10	12.6	7.56	23	0	0	0	0	0	0	0	0	26	31
1261	Moraceae	<i>Ficus brunneo-aurata</i> Corner	10	12.6	19.97	9	21	2	0	10	16	0	13	2	45	1
786	Dipterocarpaceae	<i>Shorea exelliptica</i> Meijer	10	12.5	25.74	1	16	0	2	8	4	10	8	10	22	21
1252	Moraceae	<i>Artocarpus tomentosus</i> Jarrett	10	12.5	11.66	24	0	0	0	0	2	5	15	0	37	17
1233	Nepenthaceae	<i>Nepenthes albo-marginata</i> Lobb ex Lindl.	10	12.4	11.11	0	4	0	0	33	21	1	2	5	33	0
419	Celastraceae	<i>Kokoona littoralis</i> M.A.Lawson	10	12.3	17.21	0	17	0	6	14	7	12	1	16	25	2
532	Ochnaceae	<i>Schuermansiella angustifolia</i> Hook.f. Hallier f.	10	12.1	13.84	0	26	0	1	18	6	2	3	17	27	0
1384	Orchidaceae	<i>Coelogyne verrucosa</i> S.E.C.Sierra	10	12.1	12.39	29	6	0	0	0	0	2	1	0	35	28
293	Burseraceae	<i>Canarium hirsutum</i> Willd. f. scabrum Blume Leenh.	10	12	25.37	11	0	1	0	21	10	0	9	17	23	8
485	Ericaceae	<i>Vaccinium lobbiai</i> Ridl. Sleumer	10	11.8	2.11	0	0	0	0	0	18	0	0	0	82	0
67	Euphorbiaceae	<i>Antidesma brachybotrys</i> Airy Shaw	10	11.4	13.75	17	16	0	0	8	0	3	4	1	30	22
959	Sabiaceae	<i>Meliosma lanceolata</i> Blume	10	11.4	6.14	0	0	0	5	20	0	0	1	30	43	0
614	Taccaceae	<i>Tacca bibracteata</i> Drenth	10	11.3	14.83	20	17	0	0	0	0	4	1	1	29	27
752	Dipterocarpaceae	<i>Hopea griffithii</i> Kurz	10	11.3	11.66	0	12	0	0	24	14	4	5	11	30	0
1276	Moraceae	<i>Ficus gul</i> Lauterb. & K.Schum.	10	11.2	11.72	19	0	0	0	0	1	8	8	34	30	
2	Annonaceae	<i>Alphonsea kinabaluensis</i> J.Sinclair	10	11.1	9.05	25	31	1	0	0	2	0	2	4	35	0
231	Dilleniaceae	<i>Saurauia longistyla</i> Merr.	10	11.1	4.31	29	0	0	0	0	0	0	0	0	58	13
683	Anacardiaceae	<i>Gluta velutina</i> Blume	10	10.9	11.25	0	0	0	0	22	0	0	1	30	31	15
1386	Orchidaceae	<i>Dendrobium aloifolium</i> Blume Rchb.f.	10	10.9	17.78	10	13	4	0	0	1	6	0	22	25	20
141	Euphorbiaceae	<i>Macaranga kinabaluensis</i> Airy Shaw	10	10.8	11.3	34	0	0	0	0	4	0	0	1	35	27
762	Dipterocarpaceae	<i>Hopea semicuneata</i> Symington	10	10.5	4.92	9	0	0	0	0	0	0	9	19	50	13
1008	Rosaceae	<i>Rubus fraxinifolius</i> Poir.	10	10.5	9.76	36	0	4	0	0	2	0	4	14	36	5
69	Euphorbiaceae	<i>Antidesma ghaesembilla</i> Gaertn.	10	10.4	15.81	9	0	0	0	10	2	0	12	18	27	22
1112	Caesalpiniaceae	<i>Bauhinia integrifolia</i> Roxb. subsp. <i>cumingiana</i> Benth.	10	10.4	9.91	18	0	0	0							

Table S5.1. (continued).

sp#	Family	Species	Cluster Group	IndVal	Area (in %)	1	2	3	4	5	6	7	8	9	10	11	
521	Icacinaceae	<i>Iodes cirrhosa</i> Turcz.	10	5.6	9.33	20	0	0	0	0	0	0	0	25	7	28	21
631	Cornaceae	<i>Mastixia trichotoma</i> Blume var. <i>maingayi</i> Clarke Danser	10	4.8	4.96	18	0	0	0	0	0	18	0	1	33	29	
854	Dipterocarpaceae	<i>Vatica maritima</i> Slooten	10	4	0.56	0	0	0	0	0	0	0	4	0	96	0	
1081	Meliaceae	<i>Chisocheton ruber</i> Ridl.	10	3.6	0.51	0	0	0	0	0	0	0	0	7	93	0	
564	Fagaceae	<i>Lithocarpus echinulatus</i> Soepadmo	11	41.7	15.09	4	0	0	0	5	0	3	4	17	11	55	
976	Mimosaceae	<i>Adenantha kosteriansii</i> I.C.Nielsen	11	41.7	10.26	1	0	0	0	6	0	6	4	3	12	68	
60	Annonaceae	<i>Uvaria elmeri</i> Merr.	11	39.2	8.58	13	0	0	0	0	0	1	5	3	3	74	
1246	Moraceae	<i>Artocarpus lanceifolius</i> Roxb.	11	38.5	17.54	18	10	0	0	0	0	0	3	2	16	50	
504	Simaroubaceae	<i>Ailanthus integrifolia</i> Lam.	11	37.6	21.87	1	0	0	0	3	0	19	4	8	22	43	
1136	Caesalpinaceae	<i>Dialium hydnocarpoides</i> de Wit	11	37.6	13.19	1	0	0	0	4	0	2	15	6	15	58	
54	Annonaceae	<i>Popowia hirta</i> Miq.	11	35.8	17.59	8	0	0	0	5	0	5	1	7	25	48	
211	Convolvulaceae	<i>Ipomoea triloba</i> L.	11	35.4	14.57	1	0	0	0	4	0	18	1	6	19	51	
685	Anacardiaceae	<i>Koordersiodendron pinnatum</i> Blanco Merr.	11	35.2	27.26	14	0	0	0	0	0	5	3	16	23	39	
1151	Caesalpinaceae	<i>Uttienia modesta</i> Steenis	11	34.5	5.98	1	0	0	0	0	0	0	1	0	15	83	
106	Euphorbiaceae	<i>Baccaurea parviflora</i> Müll.Arg. Müll.Arg.	11	32.6	30.72	13	0	0	0	7	0	0	5	5	7	27	35
1131	Caesalpinaceae	<i>Crudia subsimplicifolia</i> Merr.	11	32	12.69	16	0	0	0	0	0	0	0	9	21	55	
420	Celastraceae	<i>Kokoona ochracea</i> Elmer Merr.	11	31.8	17.93	17	1	0	0	0	0	0	0	2	33	47	
1055	Meliaceae	<i>Aglaia laxiflora</i> Miq.	11	30.9	23.14	17	0	0	0	9	0	3	4	1	26	40	
726	Dipterocarpaceae	<i>Dipterocarpus humeratus</i> Sloat.	11	30.8	26.91	3	6	1	0	0	0	17	3	8	26	35	
1132	Caesalpinaceae	<i>Crudia tenuipes</i> Merr.	11	30.8	29.64	16	7	0	0	0	0	2	1	7	32	35	
38	Annonaceae	<i>Polyalthia borneensis</i> Merr.	11	30.5	13.35	23	0	0	0	0	1	1	1	1	20	53	
702	Anacardiaceae	<i>Spondias philippinensis</i> Elmer Airy Shaw & Forman	11	30.5	27.14	8	0	0	0	0	0	3	1	26	27	35	
1130	Caesalpinaceae	<i>Crudia reticulata</i> Merr.	11	30.2	19.21	12	2	0	0	0	0	0	8	12	23	43	
1015	Sapindaceae	<i>Dictyonera acuminata</i> Blume subsp. <i>acuminata</i>	11	29.3	13.87	13	0	0	1	4	0	22	5	4	4	48	
308	Burseraceae	<i>Dacryodes macrocarpa</i> King H.J.Lam var. <i>kosteriansii</i> Kalkman	11	28.2	20.36	1	0	0	15	4	2	13	3	8	17	37	
62	Annonaceae	<i>Uvaria ovalifolia</i> Blume var. <i>borneensis</i> Miq.	11	27.9	28.11	15	0	1	0	1	0	21	1	13	17	33	
674	Anacardiaceae	<i>Buchanania insignis</i> Blume	11	27.9	13.84	10	0	0	0	0	0	10	3	14	16	47	
143	Euphorbiaceae	<i>Macaranga lowii</i> King ex Hook.f. var. <i>lowii</i>	11	27.7	25.59	7	0	0	25	0	0	10	9	1	14	33	
48	Annonaceae	<i>Polyalthia microtus</i> Miq.	11	27.3	32.09	7	0	0	3	9	0	4	5	13	28	31	
1034	Sapindaceae	<i>Nephelium cuspidatum</i> Blume var. <i>cuspidatum</i>	11	26.9	33.53	5	0	0	0	0	5	5	21	21	13	30	
1141	Caesalpinaceae	<i>Koompassia excelsa</i> Becc. Taub.	11	26.6	17.7	7	0	0	0	0	0	1	4	7	38	43	
330	Connaraceae	<i>Agelaea trinervis</i> Llanos Merr.	11	26.5	18.01	4	0	0	0	0	0	0	3	13	38	42	
863	Dipterocarpaceae	<i>Vatica umbonata</i> Hook.f. Burck subsp. <i>acrocarpa</i> Slooten P.S.Ashton	11	26.2	13.75	37	0	0	0	0	0	0	0	0	14	49	
59	Annonaceae	<i>Sageraea lanceolata</i> Miq.	11	26.1	21.38	4	0	0	0	8	0	0	3	15	32	37	
117	Euphorbiaceae	<i>Chaetocarpus castanocarpus</i> Roxb. Thwaites	11	26.1	41.35	9	4	0	0	7	1	7	9	10	26	27	
517	Icacinaceae	<i>Gonocaryum calleryanum</i> Baill. Becc.	11	25.8	14.15	0	0	0	12	4	0	15	2	19	7	42	
934	Polygalaceae	<i>Polygala paniculata</i> L.	11	25.8	13.52	20	0	0	0	14	0	0	0	6	12	47	
24	Annonaceae	<i>Milusa macropoda</i> Miq.	11	25.2	11.02	4	0	0	0	0	0	0	15	17	13	52	
299	Burseraceae	<i>Canarium megalanthum</i> Merr.	11	25	13.43	0	0	0	0	4	0	8	2	12	29	45	
291	Burseraceae	<i>Canarium denticulatum</i> Blume subsp. <i>kosteriansii</i> Leenh.	11	24.9	10.62	19	0	0	0	0	0	0	3	4	20	54	
424	Celastraceae	<i>Lophopetalum javanicum</i> Zoll. Turcz.	11	24.8	39.93	12	0	0	3	7	0	4	12	16	18	26	
407	Flacourtiaceae	<i>Casearia grewiaefolia</i> Vent.	11	24.4	18	2	0	0	15	1	0	3	19	15	8	38	
778	Dipterocarpaceae	<i>Shorea bracteolata</i> Dyer	11	24.3	32.61	6	22	2	0	1	0	2	7	6	27	28	
970	Chrysobalaceae	<i>Parinari canarioides</i> Kosterm.	11	23.9	18.85	0	1	0	0	0	0	25	0	18	21	36	
769	Dipterocarpaceae	<i>Shorea agami</i> P.S.Ashton subsp. <i>agami</i> P.S.Ashton	11	23.7	16.84	1	1	0	0	0	0	5	1	22	31	39	
796	Dipterocarpaceae	<i>Shorea guiso</i> Blanco Blume	11	23.7	24.37	8	0	0	0	0	0	0	1	32	25	33	
407	Rhizophoraceae	<i>Pellacalyx lobbii</i> Hook.f. Schimp.	11	23.5	25.6	5	2	0	0	0	10	4	1	23	24	31	
1149	Caesalpinaceae	<i>Sindora wallichii</i> Benth.	11	23.5	9.3	2	0	0	0	0	0	1	1	5	36	55	
312	Burseraceae	<i>Dacryodes rostrata</i> Blume H.J.Lam f. <i>pallida</i> H.J.Lam	11	23.3	16.56	0	0	0	0	3	0	7	3	24	24	39	
794	Dipterocarpaceae	<i>Shorea gibbosa</i> Bandis	11	23.3	42.78	13	19	1	0	0	4	4	6	8	21	24	
876	Araliaceae	<i>Schefflera filipes</i> Merr.	11	23.3	18.19	31	0	0	0	0	0	0	13	2	14	41	

Table S5.1. (continued).

sp#	Family	Species	Cluster Group	IndVal	Area (in %)	1	2	3	4	5	6	7	8	9	10	11
111	Euphorbiaceae	<i>Baccaurea tetrandra</i> Baill. Müll.Arg.	11	23.1	46.17	12	14	1	0	1	0	5	14	10	20	23
1009	Rosaceae	<i>Rubus moluccanus</i> L.	11	23.1	14.35	4	0	0	0	2	0	6	11	30	5	41
145	Euphorbiaceae	<i>Macaranga pearsonii</i> Merr.	11	23	26.91	14	0	0	0	1	0	4	7	21	21	31
1222	Myristicaceae	<i>Knema pubiflora</i> W.J.de Wilde	11	23	26.85	0	4	0	0	0	1	12	3	24	26	30
507	Simaroubaceae	<i>Eurycoma longifolia</i> Jack	11	22.9	37.86	18	9	2	0	0	0	11	1	11	23	25
958	Polygalaceae	<i>Xanthophyllum vitellinum</i> Blume D.Dietr.	11	22.7	39.37	9	0	0	0	0	9	9	11	13	23	25
1188	Myristicaceae	<i>Horsfieldia borneensis</i> W.J.de Wilde	11	22.5	12.85	0	12	0	0	2	0	2	0	7	34	43
972	Chrysobalaceae	<i>Parinari oblongifolia</i> Hook.f.	11	22.4	41.03	12	0	0	0	0	10	4	13	20	16	25
25	Annonaceae	<i>Mitrephora fragrans</i> Merr.	11	22.2	12.18	1	0	0	0	0	0	0	7	33	15	44
53	Annonaceae	<i>Popowia bancana</i> Scheff.	11	22.2	14.59	10	0	1	0	5	1	24	7	5	7	40
1129	Caesalpinaceae	<i>Crudia ornata</i> de Wit	11	21.8	34.38	12	0	0	0	0	1	2	17	22	18	27
656	Symplocaceae	<i>Symplocos odoratissima</i> Choisy ex Zoll. var. <i>wenzelii</i> Merr. Noot.	11	21.1	9.83	7	0	0	0	0	0	0	0	6	37	51
1286	Moraceae	<i>Ficus melinocarpa</i> Blume	11	20.6	12.01	15	0	0	0	0	0	0	6	6	27	46
719	Dipterocarpaceae	<i>Dipterocarpus cornutus</i> Dyer	11	20.4	12.7	0	0	0	0	1	0	3	12	35	8	41
1137	Caesalpinaceae	<i>Dialium indum</i> L. var. <i>indum</i>	11	20.4	49.11	16	11	3	0	3	5	9	1	15	18	20
672	Anacardiaceae	<i>Bouea oppositifolia</i> Roxb. Meisn.	11	20.3	24.78	1	0	0	11	0	0	4	10	24	21	29
1095	Meliaceae	<i>Reinwardtiendendron humile</i> Hassk. Mabb.	11	20.2	23.85	7	0	0	0	0	0	4	18	9	31	32
557	Fagaceae	<i>Lithocarpus bullatus</i> Hatus. ex Soepadmo	11	20.1	21.41	28	0	7	0	0	2	5	4	6	16	33
33	Annonaceae	<i>Orophea creaghi</i> Ridl. Leonardia & P.J.A.Kessler	11	20	17.02	14	0	0	0	0	1	0	2	12	33	37
333	Connaraceae	<i>Connarus grandis</i> Jack	11	20	19.12	16	0	0	0	0	0	6	11	30	36	
1148	Caesalpinaceae	<i>Sindora leiocarpa</i> Backer ex de Wit	11	19.7	36.21	3	3	0	0	20	2	11	8	10	18	24
1016	Sapindaceae	<i>Dimocarpus dentatus</i> Meijer ex Leenh.	11	19.6	11.58	16	0	0	0	0	0	0	10	29	45	
1124	Caesalpinaceae	<i>Caesalpinia latisiliqua</i> Cav. Hattink	11	19.4	33.05	13	20	1	0	0	0	8	2	10	21	

Table S5.1. (continued).

sp#	Family	Species	Cluster Group	IndVal	Area (in %)	1	2	3	4	5	6	7	8	9	10	11
1069	Meliaceae	<i>Aglaia spectabilis</i> Miq. S.S.Jain & Bennet	11	14.2	15.76	2	0	0	9	0	0	4	1	24	29	31
265	Thymelaeaceae	<i>Enkleia malaccensis</i> Griff.	11	14.1	8.91	7	0	0	0	0	1	1	3	22	24	42
696	Anacardiaceae	<i>Pegia sarmentosa</i> Lecomte Hand.-Mazz.	11	14.1	12.46	27	0	0	0	0	1	9	0	5	22	37
184	Euphorbiaceae	<i>Spathostemon javensis</i> Blume	11	13.9	21.42	15	0	0	0	6	0	2	7	20	22	27
917	Magnoliaceae	<i>Magnolia dolichogyna</i> Dandy ex Noot. Figlar & Noot.	11	13.6	12.18	35	0	0	0	0	0	0	11	0	15	38
943	Polygalaceae	<i>Xanthophyllum impressum</i> Meijden	11	13.6	8.24	24	0	0	0	0	0	0	1	2	28	45
1199	Myristicaceae	<i>Horsfieldia polyspherula</i> Hook.f. emend. King J.Sinclair	11	13.4	4.96	2	0	0	0	4	0	9	1	7	22	55
830	Dipterocarpaceae	<i>Shorea retusa</i> Meijer	11	13.3	9.25	0	1	0	0	0	0	14	6	16	22	39
1026	Sapindaceae	<i>Lepisanthes amoena</i> Hassk. Leenh.	11	12.7	49.89	3	11	1	0	3	13	10	12	16	15	16
1251	Moraceae	<i>Artocarpus teysmannii</i> Miq.	11	12.4	17.84	0	0	0	1	25	1	10	5	24	9	26
1028	Sapindaceae	<i>Lepisanthes kinabaluensis</i> Leenh.	11	12.1	13.3	29	0	1	0	9	0	4	10	0	14	33
852	Dipterocarpaceae	<i>Vatica javanica</i> Slooten subsp. <i>scaphifolia</i> Kosterm. P.S.Ashton	11	11.6	7.71	0	0	0	0	29	0	0	1	33	0	38
344	Dichapetalaceae	<i>Dichapetalum gelonioides</i> Roxb. Engl. subsp. <i>tuberculatum</i> Leenh.	11	11	20.43	23	0	1	0	0	0	2	11	19	19	25
390	Proteaceae	<i>Helicia maxwelliana</i> Gibbs	11	10.4	11.59	32	0	1	0	0	0	0	7	8	18	33
886	Liliaceae	<i>Smilax corbularia</i> Kunth var. <i>woodii</i> Merr. T.Koyama	11	10	7.04	37	0	0	0	0	0	0	1	0	19	43
538	Oxalidaceae	<i>Sarcotheca rubrinervis</i> Hallier f.	11	9.8	3.68	8	0	0	0	8	0	0	2	0	26	57
567	Fagaceae	<i>Lithocarpus grandifolius</i> D.Don S.N.Biswas	11	9.7	11.87	15	0	0	0	0	0	0	4	28	23	30
552	Fagaceae	<i>Castanopsis megacarpa</i> Gamble	11	9.5	10.26	26	0	3	0	0	5	2	1	0	30	34
1105	Caesalpiniaceae	<i>Afzelia rhomboidea</i> Blanco Vidal	11	8.8	7.18	21	0	0	0	0	0	0	2	0	37	40
542	Violaceae	<i>Rinorea lanceolata</i> Wall. Kuntze	11	8.5	13.47	21	0	0	0	17	0	0	9	0	25	28
662	Ulmaceae	<i>Celtis philippensis</i> Blanco	11	8.4	7.5	8	0	0	0	0	0	0	18	0	36	38
225	Dilleniaceae	<i>Saurauia agamae</i> Merr.	11	6.2	9.46	24	0	0	0	0	0	0	11	12	24	29
795	Dipterocarpaceae	<i>Shorea gratissima</i> Wall. ex Kurz Dyer	11	6.2	3.22	1	0	0	0	0	0	0	1	8	42	48
193	Caprifoliaceae	<i>Viburnum amplificatum</i> Kern	11	5.1	2.67	17	0	0	0	0	0	0	0	0	34	49
670	Anacardiaceae	<i>Anacardium occidentale</i> L.	11	3.3	1.91	0	0	0	0	18	0	0	0	10	28	44