



Universiteit  
Leiden  
The Netherlands

## **Borneo : a quantitative analysis of botanical richness, endemism and floristic regions based on herbarium records**

Raes, N.

### **Citation**

Raes, N. (2009, February 11). *Borneo : a quantitative analysis of botanical richness, endemism and floristic regions based on herbarium records*. Retrieved from <https://hdl.handle.net/1887/13470>

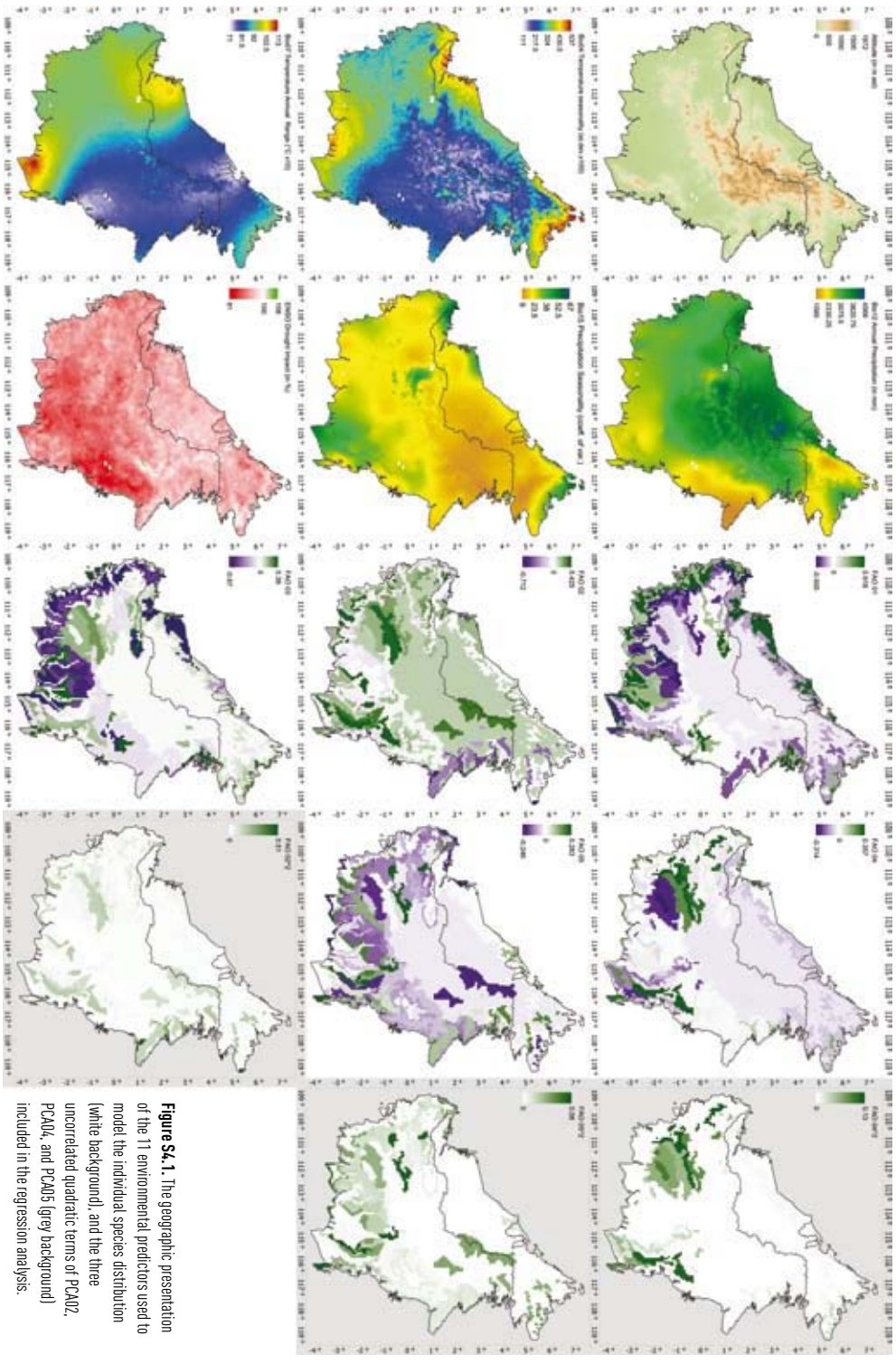
Version: Corrected Publisher's Version

License: [Licence agreement concerning inclusion of doctoral thesis in the Institutional Repository of the University of Leiden](#)

Downloaded from: <https://hdl.handle.net/1887/13470>

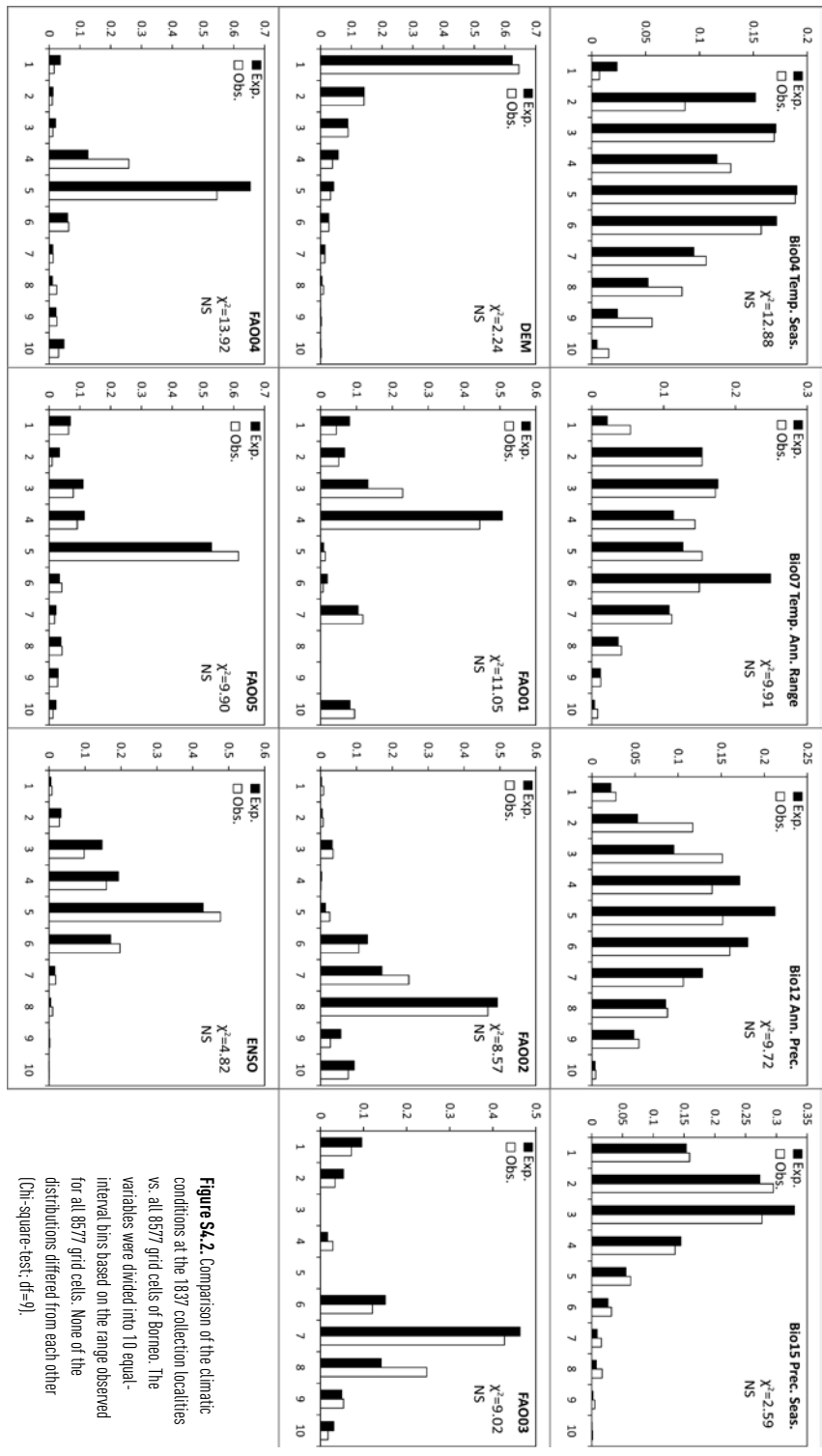
**Note:** To cite this publication please use the final published version (if applicable).

Figure S4.1



**Figure S4.1.** The geographic presentation of the 11 environmental predictors used to model the individual species distribution (white background), and the three uncorrelated quadratic terms of PCA2, PCA4, and PCA5 (grey background) included in the regression analysis.

Figure S4.2



**Figure S4.2.** Comparison of the climatic conditions at the 1837 collection localities vs. all 8577 grid cells of Borneo. The variables were divided into 10 equal-interval bins based on the range observed for all 8577 grid cells. None of the distributions differed from each other (Chi-square-test;  $df=9$ ).

Figure S4.3

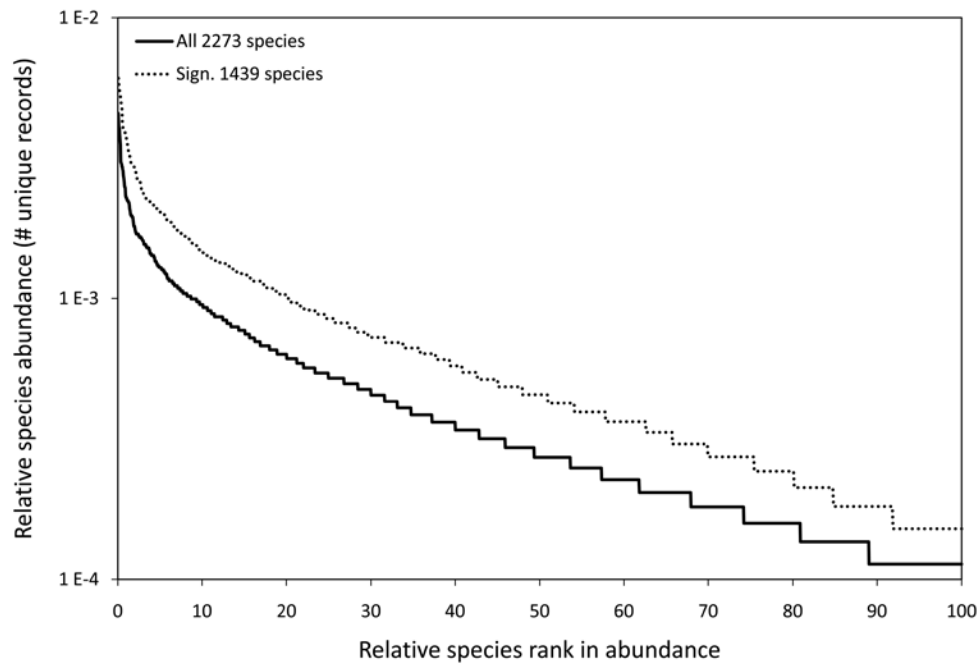


Figure S4.3. Relative species rank abundance curves based on the number of unique records per species for all 2273 modelled species, and for the 1439 species with a significant SDM.

Figure S5.1

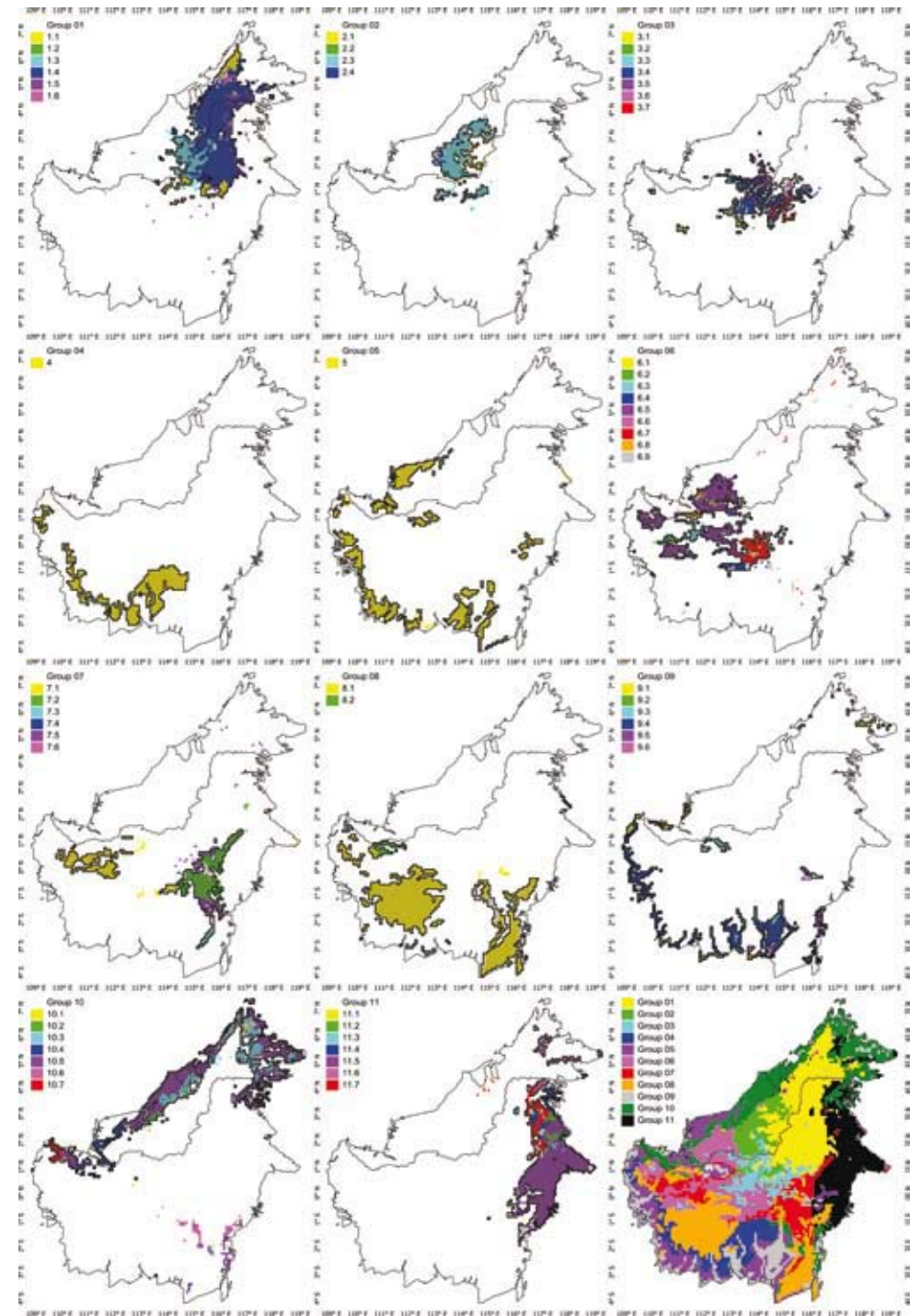
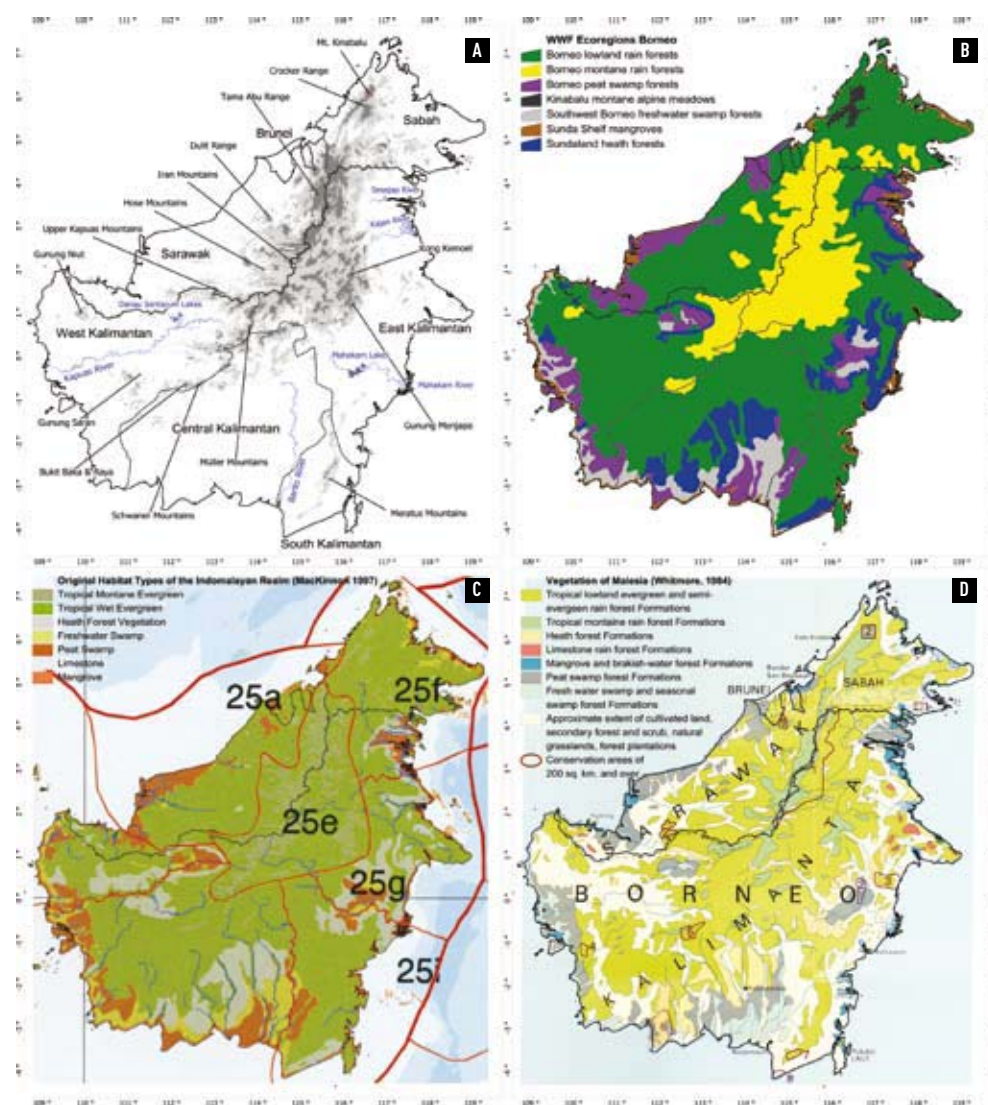


Figure S5.1. Geographical presentation of the terminal nodes of the CART per floristic region indicated by Group 01-11. Hatched areas indicate the geographical extent of the corresponding floristic regions derived from the species presence/absence cluster analysis. Lower right figure shows the CART areas belonging to each group.

Figure S5.2



**Figure S5.2. A)** Map indicating the Bornean administrative provinces of Malaysia and Indonesia, the country of Brunei, the major mountain ranges and large rivers. Areas between 500–1000m in light-grey; areas above 1000m in dark-grey; Mt. Kinabalu in red ( $\geq 2600$ m) (derived from the SRTM 90m resolution altitude data (<http://srtm.csi.cgiar.org>)). **B)** WWF ecoregions of Borneo (<http://www.worldwildlife.org/science/data/item1875.html>; downloaded 06/02/2008); colours similar to floristic regions map. **C)** Detail from the 'Original Habitat Types of the Indomalayan Realm' of MacKinnon (1997). **D)** Detail from the 'Vegetation of Malasia' map of Whitmore (1984). Note that the Limestone areas of western Borneo identified by MacKinnon (C) are erroneously mapped by the WWF (B) as heath forest. All maps in geographic projection.

**Table S3.1.** Results for the 116 Shorea distribution models. The number of unique grid cells in which a species was collected is indicated by '# Records'. The SDM AUC values are given by 'AUC'. Bold values are significantly deviating from both null-models, italic only from the random null-model ( $p < 0.05$ ). Fitted 95% confidence interval (C.I.) AUC values for the random null-model are given by '95% C.I. All'. Fitted 95% C.I. AUC values for the biased corrected null-model are given by '95% C.I. Bias'. Asterisks indicate significant deviance of the SDM from the null-models ( $p < 0.05$ ). The 'Area (in %)' indicates the percentage of the total area of Borneo for which a species was predicted to be present, after the sensitivity-specificity sum maximization threshold was applied to the continuous probabilistic Maxent predictions (only given for significant SDMs).

#	Species	# Records	AUC	95% C.I. All	95% C.I. Bias	Area (in %)
1	<i>Shorea bullata</i> P.S.Ashton	5	<b>0.9878</b>	0.9498*	0.9625*	3.8
2	<i>S. carapae</i> Ashton	5	0.9014	0.9498	0.9625	
3	<i>S. flemmichii</i> Symington	5	0.8854	0.9498	0.9625	
4	<i>S. hemsleyana</i> King ex Foxw. subsp. grandiflora Brandis P.S.Ashton	5	<b>0.9824</b>	0.9498*	0.9625*	4.8
5	<i>S. kudatensis</i> G.H.S.Wood ex Meijer	5	<b>0.9830</b>	0.9498*	0.9625*	6.4
6	<i>S. parvistipulata</i> Heim subsp. nebulosa Meijer Ashton	5	<b>0.9868</b>	0.9498*	0.9625*	2.4
7	<i>S. pubistyla</i> P.S.Ashton	5	<b>0.9910</b>	0.9498*	0.9625*	1.8
8	<i>S. revoluta</i> P.S.Ashton	5	<b>0.9976</b>	0.9498*	0.9625*	1.2
9	<i>S. elliptica</i> Burck	6	<b>0.9892</b>	0.9324*	0.9473*	5.4
10	<i>S. obovoidea</i> Slooten	6	<b>0.9935</b>	0.9324*	0.9473*	1.7
11	<i>S. parvistipulata</i> Heim subsp. albifolia P.S.Ashton	6	0.8618	0.9324	0.9473	
12	<i>S. rubella</i> P.S.Ashton	6	<b>0.9663</b>	0.9324*	0.9473*	7.7
13	<i>S. symingtonii</i> G.H.S.Wood	6	<b>0.9898</b>	0.9324*	0.9473*	2.2
14	<i>S. agami</i> P.S.Ashton subsp. diminuta Ashton	7	0.9050	0.9150	0.9321	
15	<i>S. asahi</i> P.S.Ashton	7	<b>0.9411</b>	0.9150*	0.9321*	17.0
16	<i>S. biawak</i> P.S.Ashton	7	<b>0.9776</b>	0.9150*	0.9321*	8.1
17	<i>S. iliasii</i> P.S.Ashton	7	<b>0.9516</b>	0.9150*	0.9321*	4.1
18	<i>S. laxa</i> Slooten	7	<b>0.9753</b>	0.9150*	0.9321*	6.4
19	<i>S. macrobalanos</i> P.S.Ashton	7	0.8777	0.9150	0.9321	
20	<i>S. pachyphylla</i> Ridl. ex Symington	7	<b>0.9671</b>	0.9150*	0.9321*	13.6
21	<i>S. uliginosa</i> Foxw.	7	<b>0.9376</b>	0.9150*	0.9321*	14.8
22	<i>S. macrantha</i> Brandis	8	0.9116	0.8977*	0.9169	4.4
23	<i>S. agami</i> P.S.Ashton subsp. agami P.S.Ashton	9	<b>0.9269</b>	0.8803*	0.9017*	20.1
24	<i>S. curtisii</i> Dyer ex King	9	<b>0.9296</b>	0.8803*	0.9017*	18.5
25	<i>S. cuspidata</i> P.S.Ashton	9	<b>0.9884</b>	0.8803*	0.9017*	5.0
26	<i>S. falcifera</i> Dyer	9	<b>0.9509</b>	0.8803*	0.9017*	25.0
27	<i>S. mujongensis</i> P.S.Ashton	9	0.8916	0.8803*	0.9017*	7.7
28	<i>S. ovalis</i> Korth. Blume subsp. sarawakensis P.S.Ashton	9	<b>0.9580</b>	0.8803*	0.9017*	15.3
29	<i>S. sagittata</i> Ashton	9	<b>0.9492</b>	0.8803*	0.9017*	16.4
30	<i>S. teysmanniana</i> Dyer	9	<b>0.9374</b>	0.8803*	0.9017*	15.8
31	<i>S. almon</i> Foxw.	10	0.9196	0.8900*	0.9201	6.7
32	<i>S. dasyphylla</i> Foxw.	10	0.8769	0.8900	0.9201	
33	<i>S. grattissima</i> Wall. ex Kurz Dyer	10	<b>0.9916</b>	0.8900*	0.9201*	3.8
34	<i>S. inappendiculata</i> Burck	10	<b>0.9267</b>	0.8900*	0.9201*	9.8
35	<i>S. myrioneva</i> Symington	10	<b>0.9292</b>	0.8900*	0.9201*	25.1
36	<i>S. parvistipulata</i> Heim subsp. parvistipulata	10	0.8693	0.8900	0.9201	
37	<i>S. stootenii</i> G.H.S.Wood	10	0.8990	0.8900*	0.9201	12.0
38	<i>S. albida</i> Symington	11	<b>0.9746</b>	0.8821*	0.9097*	3.5
39	<i>S. angustifolia</i> Ashton	11	0.8842	0.8821*	0.9097*	30.0
40	<i>S. crassa</i> P.S.Ashton	11	<b>0.9439</b>	0.8821*	0.9097*	19.0
41	<i>S. foxworthii</i> Symington	11	<b>0.9555</b>	0.8821*	0.9097*	17.7
42	<i>S. longiflora</i> Brandis Symington	11	0.8696	0.8821	0.9097	
43	<i>S. acuminatissima</i> Symington	12	<b>0.9737</b>	0.8741*	0.9021*	12.2
44	<i>S. faugetioides</i> P.S.Ashton	12	0.8799	0.8741*	0.9021	24.5
45	<i>S. isoptera</i> P.S.Ashton	12	<b>0.9808</b>	0.8741*	0.9021*	6.9

**Table S3.1. (continued).**

#	Species	# Records	AUC	95% C.I. All	95% C.I. Bias	Area (in %)
46	<i>S. rugosa</i> Heim	12	0.8838	0.8741*	0.9021	19.1
47	<i>S. andulensis</i> P.S.Ashton	13	<b>0.9623</b>	0.8661*	0.8973*	10.2
48	<i>S. balangeran</i> Korth. Burck	13	<b>0.9555</b>	0.8661*	0.8973*	13.9
49	<i>S. platycarpa</i> Heim	13	0.8557	0.8661	0.8973	
50	<i>S. stenoptera</i> Burck	13	<b>0.9295</b>	0.8661*	0.8973*	15.3
51	<i>S. domatiosa</i> P.S.Ashton	14	0.9701	0.8581*	0.8953*	14.6
52	<i>S. macropterifolia</i> P.S.Ashton	14	<b>0.9445</b>	0.8581*	0.8953*	13.1
53	<i>S. splendida</i> Ashton	14	0.8736	0.8581*	0.8953*	38.0
54	<i>S. flaviflora</i> G.H.S.Wood ex P.S.Ashton	15	0.9622	0.9480*	0.9622	16.1
55	<i>S. macroptera</i> Dyer subsp. bailloni	15	<b>0.9737</b>	0.9480*	0.9622*	5.9
56	<i>S. retusa</i> Meijer	15	<b>0.9695</b>	0.9480*	0.9622*	6.4
57	<i>S. confusa</i> P.S.Ashton	16	<b>0.9882</b>	0.9438*	0.9595*	8.1
58	<i>S. exelliptica</i> Meijer	16	0.9569	0.9438*	0.9595*	17.1
59	<i>S. longisperma</i> Roxb.	16	0.9416	0.9438	0.9595	
60	<i>S. platyclados</i> Slooten ex Endert	16	0.9541	0.9438*	0.9595	8.8
61	<i>S. falciferoides</i> Foxw.	17	<b>0.9702</b>	0.9397*	0.9569*	7.9
62	<i>S. patiensis</i> P.S.Ashton	17	0.9501	0.9397*	0.9569*	17.4
63	<i>S. balanocarpoides</i> Symington	18	<b>0.9829</b>	0.9357*	0.9543*	5.1
64	<i>S. pilosa</i> P.S.Ashton	18	0.9434	0.9357*	0.9543*	6.6
65	<i>S. superba</i> Foxw.	18	<b>0.9846</b>	0.9357*	0.9543*	8.7
66	<i>S. macroptera</i> Dyer	19	0.9241	0.9318	0.9517	
67	<i>S. ovalis</i> Korth. Blume subsp. ovalis	19	<b>0.9561</b>	0.9318*	0.9517*	13.5
68	<i>S. brunnescens</i> P.S.Ashton	20	<b>0.9778</b>	0.9280*	0.9492*	5.3
69	<i>S. hypoleuca</i> Meijer	20	<b>0.9822</b>	0.9280*	0.9492*	8.5
70	<i>S. monticola</i> P.S.Ashton	20	<b>0.9822</b>	0.9280*	0.9492*	5.2
71	<i>S. scrobiculata</i> Burck	21	<b>0.9646</b>	0.9243*	0.9468*	8.6
72	<i>S. virescens</i> Parisj	21	<b>0.9550</b>	0.9243*	0.9468*	16.6
73	<i>S. xanthophylla</i> Symington	21	<b>0.9662</b>	0.9243*	0.9468*	6.9
74	<i>S. coriacea</i> Burck	22	<b>0.9643</b>	0.9206*	0.9444*	12.0
75	<i>S. palembanica</i> Miq.	22	0.9426	0.9206*	0.9444*	6.2
76	<i>S. venulosa</i> G.H.S.Wood ex Meijer	22	<b>0.9818</b>	0.9206*	0.9444*	5.6
77	<i>S. mecistopteryx</i> Ridl.	23	0.9368	0.9170*	0.9420	13.5
78	<i>S. obscura</i> Meijer	24	0.9251	0.9135*	0.9397*	8.9
79	<i>S. macroptera</i> Dyer subsp. sandakanensis Symington P.S.Ashton	25	<b>0.9575</b>	0.9101*	0.9374*	5.4
80	<i>S. ovata</i> Dyer ex Brandis	25	<b>0.9818</b>	0.9101*	0.9374*	6.7
81	<i>S. argentifolia</i> Symington	27	<b>0.9396</b>	0.9035*	0.9330*	17.8
82	<i>S. havilandi</i> Brandis	27	<b>0.9762</b>	0.9035*	0.9330*	10.5
83	<i>S. maxwelliana</i> King	27	<b>0.9604</b>	0.9035*	0.9330*	6.7
84	<i>S. ochracea</i> Symington	27	0.9203	0.9035*	0.9330*	14.2
85	<i>S. polyandra</i> P.S.Ashton	27	<b>0.9434</b>	0.9035*	0.9330*	22.7
86	<i>S. rubra</i> P.S.Ashton	27	<b>0.9786</b>	0.9035*	0.9330*	7.3
87	<i>S. agami</i> P.S.Ashton	28	<b>0.9696</b>	0.9003*	0.9308*	11.3
88	<i>S. lamellata</i> Foxw.	28	<b>0.9525</b>	0.9003*	0.9308*	10.1
89	<i>S. quadrinervis</i> Slooten	28	<b>0.9515</b>	0.9003*	0.9308*	8.0
90	<i>S. kunstleri</i> King	30	0.9136	0.8942*	0.9267	18.0
91	<i>S. hopeifolia</i> Heim Symington	32	0.8958	0.8883*	0.9226	16.7
92	<i>S. scaberrima</i> Burck	32	<b>0.9464</b>	0.8883*	0.9226*	10.2
93	<i>S. ferruginea</i> Dyer ex Brandis	34	<b>0.9380</b>	0.8827*	0.9188*	22.1
94	<i>S. scabrida</i> Symington	34	<b>0.9494</b>	0.8827*	0.9188*	18.5
95	<i>S. amplexicaulis</i> Ashton	35	<b>0.9246</b>	0.8800*	0.9169*	11.0
96	<i>S. beccariana</i> Burck	35	0.9047	0.8800*	0.9169*	25.7
97	<i>S. parvifolia</i> Dyer subsp. parvifolia	35	0.9104	0.8800*	0.9169*	18.1
98	<i>S. atrinervis</i> Symington	37	<b>0.9365</b>	0.8748*	0.9133*	9.1

Table S3.1. (continued).

#	Species	# Records	AUC	95% C.I. All	95% C.I. Bias	Area (in %)
99	<i>S. ovalis</i> Korth. Blume	37	<b>0.9546</b>	0.8748*	0.9133*	20.0
100	<i>S. bracteolata</i> Dyer	38	<b>0.9533</b>	0.8722*	0.9115*	17.4
101	<i>S. guiso</i> Blanco Blume	38	<b>0.9559</b>	0.8722*	0.9115*	17.7
102	<i>S. parvifolia</i> Dyer	38	<b>0.9243</b>	0.8722*	0.9115*	21.9
103	<i>S. johorensis</i> Foxw.	39	<b>0.9358</b>	0.8698*	0.9098*	20.6
104	<i>S. faguetiana</i> Heim	43	<b>0.9348</b>	0.8605*	0.9032*	7.4
105	<i>S. macrophylla</i> de Vriese P.S.Ashton	46	0.8819	0.8542*	0.8987*	26.8
106	<i>S. smithiana</i> Symington	46	<b>0.9454</b>	0.8542*	0.8987*	10.5
107	<i>S. fallax</i> Meijer	47	<b>0.9404</b>	0.8522*	0.8972*	10.0
108	<i>S. parvistipulata</i> Heim	52	<b>0.9206</b>	0.8428*	0.8904*	12.8
109	<i>S. seminis</i> de Vriese Slooten	55	<b>0.8965</b>	0.8377*	0.8866*	30.2
110	<i>S. gibbosa</i> Bandis	68	<b>0.9042</b>	0.8191*	0.8730*	18.3
111	<i>S. multiflora</i> Burck Symington	68	<b>0.9272</b>	0.8191*	0.8730*	16.9
112	<i>S. laevis</i> Ridl.	69	<b>0.8778</b>	0.8178*	0.8721*	19.9
113	<i>S. pauciflora</i> King	73	0.8666	0.8131*	0.8687*	12.5
114	<i>S. pinanga</i> Scheff.	73	0.8609	0.8131*	0.8687*	22.1
115	<i>S. leprosula</i> Miq.	86	<b>0.8872</b>	0.7988*	0.8593*	23.5
116	<i>S. parvifolia</i> Dyer subsp. <i>velutinata</i> P.S.Ashton	92	0.8475	0.7923*	0.8557*	21.2

Table S4.1. Pairwise Pearson's correlation coefficients (r) for the 14 environmental predictors. Legend: DEM - Digital Elevation Model; Bio04 – Temperature seasonality; Bio07 – Temperature annual range; Bio12 – Annual precipitation; Bio15 – Precipitation seasonality; PCA01-05 – PCA soil axes 1-5; ENSO – Drought impact by El Niño events on NDVI values. Table S5.1. Results of the Indicator Species Analysis (ISA) on 11 'Cluster Groups' and 8577 grid cells. Species are ranked on Indicator Values (IndVal) per cluster group. 'Area (in %)' gives both the percentages of the surface of Borneo covered by a species derived from its significant Species Distribution Model (SDM). Values in the table give the rounded 'percentage of perfect indication'.

	DEM	Bio04	Bio07	Bio12	Bio15	PCA01	PCA02	PCA03	PCA04	PCA05	ENSO	PCA02 <sup>2</sup>	PCA04 <sup>2</sup>
Bio04	-0.512												
Bio07	-0.361	<b>0.737</b>											
Bio12	0.207	-0.167	0.030										
Bio15	-0.412	0.514	0.507	-0.254									
PCA01	-0.216	0.194	0.142	-0.030	0.185								
PCA02	0.274	-0.078	0.094	0.214	0.040	0.138							
PCA03	0.226	-0.214	-0.202	0.066	-0.168	-0.306	-0.036						
PCA04	-0.064	0.026	0.081	-0.095	0.149	0.034	0.151	-0.018					
PCA05	-0.136	0.033	0.004	-0.062	0.048	0.068	-0.011	0.021	-0.010				
ENSO	0.372	-0.078	-0.099	0.274	-0.390	-0.053	-0.003	0.128	-0.083	0.034			
PCA02 <sup>2</sup>	0.078	-0.035	-0.023	-0.208	-0.026	-0.028	0.044	0.022	0.364	0.230	0.084		
PCA04 <sup>2</sup>	-0.085	0.134	0.193	-0.109	0.184	-0.230	0.323	0.285	0.464	0.119	-0.126	0.331	
PCA05 <sup>2</sup>	-0.062	0.149	0.112	-0.140	0.094	-0.170	0.060	-0.078	0.049	0.112	-0.058	0.334	0.292

Table S5.1. Results of the Indicator Species Analysis (ISA) on 11 'Cluster Groups' and 8577 grid cells. Species are ranked on Indicator Values (IndVal) per cluster group. 'Area (in %)' gives both the percentages of the surface of Borneo covered by a species derived from its significant Species Distribution Model (SDM). Values in the table give the rounded 'percentage of perfect indication'.

sp#	Family	Species	Cluster Group	IndVal	Area (in %)	1	2	3	4	5	6	7	8	9	10	11
1239	Cunoniaceae	<i>Weinmannia ophanoneura</i> Airy Shaw	1	69	12.3	85	0	12	0	0	0	0	0	0	1	1
1324	Orchidaceae	<i>Appendicula cristata</i> Blume	1	65	12.85	82	0	5	0	0	0	1	0	0	7	5
1356	Orchidaceae	<i>Bulbophyllum rhizomatosum</i> Alb. & Schwein.	1	64.3	14.2	73	0	25	0	0	0	0	0	0	1	1
1364	Orchidaceae	<i>Chelonistele ingloria</i> J.J.Sm. Carr	1	64.3	12.94	78	6	13	0	0	0	0	0	0	1	2
582	Fagaceae	<i>Quercus valdinervosa</i> Soepadmo	1	61.4	13.64	75	0	15	0	0	0	0	0	0	8	1
658	Symplocaceae	<i>Symplocos ophirensis</i> C.B. Clarke subsp. <i>cumingiana</i> Brand Noot. var. <i>cumingiana</i>	1	61.2	10.05	92	0	1	0	0	0	0	0	0	5	2
1204	Myristicaceae	<i>Horsfieldia subalpina</i> J.Sinclair subsp. <i>kinabaluensis</i> W.J.de Wilde	1	60.6	16.65	64	1	31	0	0	0	0	0	0	2	3
1168	Loranthaceae	<i>Helixanthera spicata</i> Danser	1	60	15.73	69	6	9	0	0	0	2	5	0	6	5
1240	Cunoniaceae	<i>Weinmannia fraxinea</i> D.Don Miq.	1	59.6	13.84	74	2	11	0	0	0	3	4	1	3	3
461	Ericaceae	<i>Rhododendron himantodes</i> Sleumer	1	58.9	14.41	71	1	17	0	0	0	0	4	0	3	3
650	Symplocaceae	<i>Symplocos laeteviridis</i> Stapf var. <i>basiratunda</i> Noot.	1	57	13.83	74	3	6	0	0	0	0	5	0	9	4
1433	Orchidaceae	<i>Thelesis variabilis</i> Ames & C.Schweinf.	1	56.9	13.7	71	0	20	0	0	0	0	4	0	2	2
1381	Orchidaceae	<i>Coelogyne rhadobulbon</i> Schltr.	1	56.2	19.73	57	4	22	0	0	0	4	0	0	4	9
881	Araliaceae	<i>Schefflera trineura</i> Frodin	1	56.1	17.07	60	10	23	0	0	0	2	0	0	3	3
492	Juglandaceae	<i>Engelhardtia roxburghiana</i> Wall.	1	54.1	17.58	62	3	10	0	0	0	0	1	0	12	11
1389	Orchidaceae	<i>Dendrobium corallorhizon</i> J.J.Sm.	1	53.9	16.96	64	0	6	0	0	0	1	3	0	5	20
75	Euphorbiaceae	<i>Antidesma neurocarpum</i> Miq. var. <i>neurocarpum</i>	1	52.9	21.76	54	6	11	0	0	0	0	0	0	13	16
998	Rosaceae	<i>Prunus arborea</i> Blume Kalkman var. <i>alticola</i> Kalkman	1	52.7	17.27	58	7	25	0	0	0	0	1	0	1	8
1361	Orchidaceae	<i>Calanthe pulchra</i> Blume Lindl.	1	52.5	14.53	65	1	25	0	0	0	0	4	0	2	3
458	Ericaceae	<i>Rhododendron crassifolium</i> Stapf	1	51.4	18.08	54	10	30	0	0	0	0	0	0	5	0
1358	Orchidaceae	<i>Bulbophyllum striatellum</i> Ridl.	1	51.2	16.85	56	13	26	0	0	0	0	0	0	2	2
1341	Orchidaceae	<i>Bulbophyllum ecornutum</i> J.J.Sm. J.J.Sm.	1	50.6	11.89	74	4	4	0	0	0	1	0	0	6	10
1338	Orchidaceae	<i>Bulbophyllum confertum</i> Ridl.	1	49.3	15.1	61	0	30	0	0	0	0	0	0	9	0
1375	Orchidaceae	<i>Coelogyne longibulbosa</i> Ames & C.Schweinf.	1	49.3	10.99	73	0	26	0	0	0	0	0	0	0	1
1345	Orchidaceae	<i>Bulbophyllum membranifolium</i> Hook.f.	1	49	14.54	62	0	29	0	0	0	0	3	0	0	6
1236	Nepenthaceae	<i>Nepenthes lowii</i> Hook.f.	1	48.7	11.04	74	0	19	0	0	0	0	0	0	2	6
1376	Orchidaceae	<i>Coelogyne moultonii</i> J.J.Sm.	1	48.7	17.3	57	1	25	0	0	0	0	11	0	2	3
1157	Illiciaceae	<i>Illicium stapfii</i> Merr.	1	48.1	15.34	59	0	32	0	0	0	0	3	0	5	1
1192	Myristicaceae	<i>Horsfieldia endertii</i> W.J.de Wilde	1	47.6	7.19	96	0	1	0	0	0	0	0	0	1	1
514	Clethraceae	<i>Clethra longispicata</i> J.J.Sm.	1	47.5	7.92	91	0	4	0	0	0	0	2	0	1	3
1399	Orchidaceae	<i>Dendrochilum imbricatum</i> Ames	1	46.9	8.23	89	0	0	0	0	0	0	0	0	10	1
490	Ericaceae	<i>Vaccinium uroglossum</i> Sleumer	1	46.4	13.91	60	0	36	0	0	0	0	2	0	0	1
654	Symplocaceae	<i>Symplocos laeteviridis</i> Stapf var. <i>pauciflora</i> Noot.	1	46.4	13.49	62	10	21	0	0	0	0	1	0	3	2
85	Euphorbiaceae	<i>Aporosa chondroneura</i> Airy Shaw Schot	1	46.1	20.89	47	20	24	0	0	0	0	0	0	4	5
891	Aristolochiaceae	<i>Aristolochia minutiflora</i> Ridl. ex Gamble	1	46.1	15.55	58	0	27	0	0	0	1	3	0	4	6
1004	Rosaceae	<i>Prunus oocarpa</i> Stapf Kalkman	1	45.6	11.37	69	0	25	0	0	0	0	1	0	0	5
488	Ericaceae	<i>Vaccinium retvenium</i> Sleumer	1	45.3	17.14	55	0	27	0	0	1	1	0	0	13	3
1420	Orchidaceae	<i>Nabalua angustifolia</i> de Vogel	1	45	7.18	92	0	6	0	0	0	0	0	0	0	1
1424	Orchidaceae	<i>Pholidota clemensii</i> Ames	1	43.6	8.46	80	0	19	0	0	0	0	0	0	1	0
486	Ericaceae	<i>Vaccinium pachydermum</i> Stapf	1	43.3	13.78	62	12	4	0	0	0	0	0	0	16	5
1178	Loranthaceae	<i>Macrosolen melintangensis</i> Korth. Miq.	1	43.3	11.85	69	0	4	0	6	0	0	0	0	12	9
1347	Orchidaceae	<i>Bulbophyllum minutulum</i> Ridl.	1	43	12.57	66	0	14	0	0	0	0	8	0	1	11
466	Ericaceae	<i>Rhododendron micromalayanum</i> Sleumer	1	42.9	8.02	86	2	1	0	0	0	0	0	0	3	8
473	Ericaceae	<i>Rhododendron quadrasianum</i> S.Vidal var. <i>villosum</i> J.J.Sm.	1	42.6	21.39	47	0	28	0	1	2	1	7	0	9	5
1337	Orchidaceae	<i>Bulbophyllum comberi</i> J.J.Verm.	1	42.6	15.75	56	0	26	0	0	0	1	3	0	6	8
1371	Orchidaceae	<i>Coelogyne dayana</i> Rchb.f.	1	42.5	17.29	52	8	13	0	0	0	1	5	13	3	4

Table S5.1. (continued).

sp#	Family	Species	Cluster Group	IndVal	Area (in %)	1	2	3	4	5	6	7	8	9	10	11
1398	Orchidaceae	<i>Dendrochilum gracilipes</i> Carr	1	42.2	18.49	51	10	19	0	0	0	0	11	0	4	4
1405	Orchidaceae	<i>Entomophobia kinabaluensis</i> Ames de Vogel	1	42.2	20.73	44	5	40	0	0	4	2	0	0	3	2
1334	Orchidaceae	<i>Bulbophyllum brevicolumna</i> J.J.Verm.	1	41.8	19.38	50	12	14	0	0	0	0	9	0	7	7
463	Ericaceae	<i>Rhododendron lanceolatum</i> Ridl.	1	40.6	22.09	43	13	30	0	0	0	1	5	0	7	2
499	Loganiaceae	<i>Mitreola sphaerocarpa</i> Leenh. Leenh.	1	40.6	18.75	51	6	8	0	0	0	4	5	0	10	16
546	Fagaceae	<i>Castanopsis clemensii</i> Soepadmo	1	40.5	11.73	67	0	8	0	0	0	0	1	0	7	17
926	Podocarpaceae	<i>Dacrydium xanthandrum</i> Pilg.	1	40.5	16.09	52	0	37	0	0	0	0	2	0	7	2
1359	Orchidaceae	<i>Bulbophyllum tortuosum</i> Blume Lindl.	1	40.4	20.07	48	0	29	0	0	1	0	12	1	5	4
451	Ericaceae	<i>Diplycosia salicifolia</i> Sleumer	1	40.3	20.58	47	18	6	0	0	0	0	4	0	14	10
1322	Orchidaceae	<i>Appendicula congesta</i> Ridl.	1	40.2	12.69	63	0	12	0	0	0	0	3	0	11	11
412	Campanulaceae	<i>Lobelia zeylanica</i> L.	1	40.1	14	58	0	21	0	0	1	0	6	7	2	6
477	Ericaceae	<i>Rhododendron suaveolens</i> Sleumer	1	40.1	10	72	0	11	0	0	0	0	1	0	4	13
1414	Orchidaceae	<i>Eria robusta</i> Blume Lindl.	1	40.1	7.54	85	0	6	0	0	0	0	0	0	1	8
1377	Orchidaceae	<i>Coelogyne planiscapa</i> Carr	1	39.7	22.11	44	14	19	0	1	0	0	11	0	5	5
1155	Daphniphyllaceae	<i>Daphniphyllum glaucescens</i> Blume subsp. <i>borneense</i> Stapf T.C.Huang	1	39.3	12.18	60	0	33	0	0	0	0	3	0	1	4
1400	Orchidaceae	<i>Dendrochilum longipes</i> J.J.Sm.	1	39	8.29	75	0	23	0	0	0	0	1	0	0	0
1333	Orchidaceae	<i>Bulbophyllum auratum</i> Lindl. Rchb.f.	1	38.4	16.73	52	2	22	0	0	1	0	11	0	3	9
1392	Orchidaceae	<i>Dendrobium kiauense</i> Ames & C.Schweinf.	1	38.4	23.96	38	14	35	0	0	2	1	0	0	5	3
1342	Orchidaceae	<i>Bulbophyllum flavescens</i> Blume Lindl.	1	38.3	21.48	44	7	24	0	0	3	3	7	0	8	5
1363	Orchidaceae	<i>Chelonistele amplissima</i> Ames & C.Schweinf. Carr	1	38.3	23.74	42	7	22	0	0	1	4	0	0	8	17
89	Euphorbiaceae	<i>Aporosa fulvovittata</i> Schot	1	38.1	11.9	65	0	3	0	0	0	0	3	0	15	14
95	Polygalaceae	<i>Xanthophyllum tenue</i> Chodat	1	38	8.58	78	0	0	0	0	0	0	0	0	18	4
868	Araliaceae	<i>Arthrophyllum borneensis</i> Philipson Merr.	1	37.9	13.94	56	0	31	0	0	0	0	12	0	0	2
1372	Orchidaceae	<i>Coelogyne hirtella</i> J.J.Sm.	1	37.6	10.2	66	1	22	0	0	0	0	1	0	5	5
1270	Moraceae	<i>Ficus eumorpha</i> Corner	1	37.4	7.35	81	0	13	0	0	0	0	1	0	0	5
1395	Orchidaceae	<i>Dendrobium orbiculare</i> J.J.Sm.	1	37.4	16.51	51	0	24	0	0	0	0	5	0	5	14
1321	Orchidaceae	<i>Appendicula calcarata</i> Ridl.	1	37.2	8.22	79	0	3	0	0	0	0	13	0	1	4
414	Campanulaceae	<i>Pentaphragma aurantiaca</i> Stapf	1	37	17.22	48	3	37	0	0	0	0	10	0	0	2
1354	Orchidaceae	<i>Bulbophyllum pocillum</i> J.J.Verm.	1	36.6	7.05	80	0	19	0	0	0	0	0	0	0	0
583	Fagaceae	<i>Trigonobalanus verticillata</i> Forman	1	36.5	24.43	39	6	32	0	0	5	0	0	0	7	11
698	Anacardiaceae	<i>Rhus borneensis</i> Stapf	1	36.3	5.19	99	0	0	0	0	0	0	0	0	0	1
1323	Orchidaceae	<i>Appendicula cornuta</i> Blume	1	36.3	26.82	36	23	19	0	0	2	0	0	0	8	12
646	Symplocaceae	<i>Symplocos henschelii</i> Moric. Benth. ex C.B.Clarke subsp. <i>henschelii</i> var. <i>henschelii</i>	1	36.1	11.1	60	19	13	0	0	0	0	1	0	7	0
1302	Moraceae	<i>Ficus setiflora</i> Stapf var. <i>adelpha</i> Corner	1	36	12.81	58	0	23	0	0	0	0	16	0	1	2
511	Staphyleaceae	<i>Turpinia grandis</i> B.L.Linden	1	35.9	10.16	69	0	0	0	0	0	0	1	0	16	14
1410	Orchidaceae	<i>Eria longifolia</i> Hook.f.	1	35.6	7.79	77	0	11	0	0	0	0	1	1	10	0
481	Ericaceae	<i>Vaccinium cloaxylon</i> J.J.Sm.	1	35.4	21.08	41	9	31	0	0	4	1	3	0	8	2
449	Ericaceae	<i>Diplycosia punctulata</i> Stapf	1	35	17.63	51	0	11	0	0	0	0	28	0	9	1
1404	Orchidaceae	<i>Dilochia cantleyi</i> Hook.f. Ridl.	1	34.3	26.49	35	14	33	0	0	7	2	4	0	3	3
1365	Orchidaceae	<i>Chelonistele sulphurea</i> Blume Pfitzer var. <i>sulphurea</i>	1	34.2	22.69	38	27	13	0	6	0	1	0	0	9	5
962	Sabiaceae	<i>Meliosma rufopilosa</i> M.R.Hend.	1	33.9	11.17	63	0	11	0	0	0	0	18	0	5	3
1388	Orchidaceae	<i>Dendrobium cinereum</i> J.J.Sm.	1	33.7	23.08	37	16	29	0	0	0	3	0	3	1	10
1415	Orchidaceae	<i>Eria saccifera</i> Hook.f.	1	33.5	28.58	34	8	31	0	0	7	1	4	0	6	9
1437	Orchidaceae	<i>Trichostema aurea</i> Ridl. Carr	1	33.4	16.64	46	0	34	0	0	2	2	0	0	11	5
586	Cyperaceae	<i>Carex cruciata</i> Wahlenb. var. <i>cruciata</i>	1	33.3	17.24	49	0	16	0	0	0	0	8	0	9	19
1368	Orchidaceae	<i>Coelogyne compressicaulis</i> Ames & C.Schweinf.	1	33	5.4	90	0	10	0	0	0	0	0	0	0	0
84	Euphorbiaceae	<i>Aporosa caloneura</i> Airy Shaw	1	32.2	19.75	40	11	26	0	0	13	0	4	0	4	1
575	Fagaceae	<i>Lithocarpus papillifer</i> Hatus. ex Soepadmo	1	32.2	13.2	50	0	39	0	0	3	0	0	0	7	1
1425	Orchidaceae	<i>Pholidota gibbosa</i> Blume de Vriese	1	32	27.49	32	15	31	0	0	4	6	1	3	3	6
487	Ericaceae	<i>Vaccinium phylliroides</i> Sleumer	1	31.7	26.02	33	24	25	0	0	7	0	0	0	10	1
454	Ericaceae	<i>Rhododendron bagabonum</i> J.J.Copel.	1	31.5	29.87	32	2	28	0	9	7	5	0	0	5	12
1283	Moraceae	<i>Ficus macilentia</i> King	1	31.2	6.53	81	1	3	0	0	0	0	4	0	11	0
649	Symplocaceae	<i>Symplocos laeteviridis</i> Stapf var. <i>alternifolia</i> Noot.	1	30.6	11.88	58	0	7	0	0	0	0	9	0	9	17

Table S5.1. (continued).

sp#	Family	Species	Cluster Group	IndVal	Area (in %)	1	2	3	4	5	6	7	8	9	10	11
1289	Moraceae	<i>Ficus oleifolia</i> King subsp. <i>intermedia</i> Corner C.C.Berg	1	30.6	5.54	85	0	13	0	0	0	0	1	0	1	0
920	Magnoliaceae	<i>Magnolia liliifera</i> L. Baill. var. <i>obovata</i>	1	30.4	27.68	35	9	14	0	0	1	0	14	5	17	5
568	Fagaceae	<i>Lithocarpus hatusimae</i> Soepadmo	1	30.2	8.3	67	0	16	0	0	0	0	0	0	4	13
1439	Orchidaceae	<i>Trichostema ferox</i> Blume	1	30.2	28.28	33	1	30	0	0	14	2	7	0	9	5
260	Styracaceae	<i>Bruinsmia styracoides</i> Boerl. & Koord.	1	29.8	16.94	45	0	19	0	0	6	5	5	0	10	11
645	Symplocaceae	<i>Symplocos henschelii</i> Moric. Benth. ex C.B.Clarke subsp. <i>henschelii</i>	1	29.6	17.79	42	23	5	0	0	7	0	0	0	19	3
1349	Orchidaceae	<i>Bulbophyllum mutabile</i> Blume Lindl.	1	29.3	4.41	97	0	0	0	0	0	0	3	0	0	0
1012	Rosaceae	<i>Rubus rosaeifolius</i> Sm.	1	29.2	19.69	42	0	8	0	1	0	4	1	0	8	36
1408	Orchidaceae	<i>Eria hyacinthoides</i> Blume Lindl.	1	29.2	13.29	53	0	6	0	0	0	2	2	0	11	25
256	Myricaceae	<i>Myrica javanica</i> Blume	1	28.8	25.46	34	4	33	0	0	8	1	8	0	8	3
435	Celastraceae	<i>Salacia laurifolia</i> Stapf	1	28.7	19.44	40	0	25	0	0	0	0	18	13	3	1
439	Ericaceae	<i>Diplycosia barbiger</i> Sleumer	1	28.7	18.62	38	29	17	0	0	0	0	0	0	10	6
124	Euphorbiaceae	<i>Hamalanthus caloneurus</i> Airy Shaw	1	28.5	21.22	40	0	17	0	0	1	0	12	0	11	19
652	Symplocaceae	<i>Symplocos laeteviridis</i> Stapf var. <i>laeteviridis</i>	1	28.5	27.12	34	8	13	0	10	3	1	4	0	22	5
470	Ericaceae	<i>Rhododendron polyanthemum</i> Sleumer	1	28.3	33.38	29	14	27	0	0	8	1	12	1	4	5
1197	Myristicaceae	<i>Horsfieldia montana</i> Airy Shaw	1	27.9	4.29	94	0	6	0	0	0	0	0	0	0	0
1397	Orchidaceae	<i>Dendrochilum gibbsiae</i> Rolfe	1	27.9	17.56	39	5	39	0	0	6	0	0	0	5	6
91	Euphorbiaceae	<i>Aporosa lagenocarpa</i> Airy Shaw	1	27.5	8.01	65	0	12	0	0	9	0	0	0	13	0
1401	Orchidaceae	<i>Dendrochilum muluense</i> J.J.Wood	1	27.5	3.95	99	0	0	0	0	0	0	0	0	0	1
655	Symplocaceae	<i>Symplocos laeteviridis</i> Stapf var. <i>velutinos</i> Noot.	1	27.4	4.33	93	0	6	0	0	0	0	0	0	0	1
1413	Orchidaceae	<i>Eria nutans</i> Lindl.	1	27.1	19.19	41	7	5	0	1	0	7	2	1	15	20
442	Ericaceae	<i>Diplycosia cinnamomifolia</i> Stapf	1	26.9	4.23	94	0	1	0	0	0	0	0	0	1	3
1339	Orchidaceae	<i>Bulbophyllum coriaceum</i> Ridl.	1	26.8	16.79	45	0	12	0	0	0	0	14	0	14	14

Table S5.1. (continued).

sp#	Family	Species	Cluster Group	IndVal	Area (in %)	1	2	3	4	5	6	7	8	9	10	11
1318	Orchidaceae	<i>Agrostophyllum glumaceum</i> Hook.f.	1	23	26.23	32	16	1	0	0	1	1	0	0	30	19
318	Burseraceae	<i>Santria grandiflora</i> Kalkman	1	22	18.76	37	12	3	0	0	0	5	1	0	20	22
1089	Meliaceae	<i>Dysoxylum macrocarpum</i> Blume	1	22	22.65	32	23	4	0	9	0	2	0	2	17	11
651	Symplocaceae	<i>Symplocos laeteviridis</i> Stapf var. <i>kinabaluensis</i> Heine Noot.	1	21.8	4.23	85	0	1	0	0	0	0	11	0	2	0
418	Celastraceae	<i>Euonymus castaneifolius</i> Ridl.	1	21.7	38.04	24	22	7	0	0	6	1	6	10	16	7
469	Ericaceae	<i>Rhododendron pneumonanthe</i> Sleumer	1	21.7	3.29	95	0	4	0	0	0	0	0	0	0	0
1374	Orchidaceae	<i>Coelogyne kinabaluensis</i> Ames & C.Schweinf.	1	21.7	3.37	94	0	5	0	0	0	0	1	0	0	1
949	Polygalaceae	<i>Xanthophyllum purpureum</i> Ridl.	1	21.5	29.94	29	9	2	1	0	1	3	11	2	28	13
1369	Orchidaceae	<i>Coelogyne craticulaelabris</i> Carr	1	21.5	22.75	33	0	20	0	0	1	0	22	11	9	6
1061	Meliaceae	<i>Aglaia monozyga</i> Harms	1	21.3	15.55	42	0	3	0	0	0	4	2	0	36	13
235	Dilleniaceae	<i>Saurauia tristyla</i> DC.	1	21.2	10.85	50	0	2	0	11	0	0	9	0	15	13
1005	Rosaceae	<i>Prunus spicata</i> Kalkman	1	21.2	19.77	35	0	22	0	0	1	0	20	2	16	4
1183	Loranthaceae	<i>Taxillus chinensis</i> DC. Danser	1	21	13.02	45	0	6	0	0	0	0	11	4	14	20
1327	Orchidaceae	<i>Appendicula torta</i> Blume	1	20.7	18.4	35	2	13	0	9	14	0	7	0	13	7
1370	Orchidaceae	<i>Coelogyne cuprea</i> H.Wendl. & Kraenzl.	1	20.7	5.7	71	0	1	0	0	0	0	12	0	12	5
637	Symplocaceae	<i>Symplocos adenophylla</i> Wall. & G.Don	1	20.4	8.88	53	0	9	1	1	5	0	8	4	19	0
551	Fagaceae	<i>Castanopsis javanica</i> Blume A.DC.	1	20.3	15.75	40	1	1	0	0	0	0	0	13	20	25
476	Ericaceae	<i>Rhododendron stenophyllum</i> Hook.f.	1	20.2	5.23	72	0	2	0	0	0	0	0	0	24	1
450	Ericaceae	<i>Diplycosia rufa</i> Stapf	1	20.1	29.63	28	0	12	0	11	1	0	15	1	20	13
1390	Orchidaceae	<i>Dendrobium cymbulipes</i> J.J.Sm.	1	20	2.86	100	0	0	0	0	0	0	0	0	0	0
885	Liliaceae	<i>Pleomele angustifolia</i> Roxb. N.E.Br.	1	19.8	16.24	39	0	5	0	0	1	0	1	11	35	8
710	Labiatae	<i>Paraphlomis javanica</i> Blume Prain	1	19.7	12.87	45	0	1	0	1	0	1	9	0	11	31
276	Thymelaeaceae	<i>Wikstroemia androaenifolia</i> Decne.	1	19.4	21.67	32	0	14	0	0	9	1	8	0	23	13
1373	Orchidaceae	<i>Coelogyne incrassata</i> Blume Lindl.	1	19.4	14.61	39	0	24	1	0	6	0	13	0	14	2
869	Araliaceae	<i>Arthropodium collinum</i> Philipson	1	19.2	10.47	48	0	10	0	0	0	0	1	0	30	11
711	Labiatae	<i>Plectranthus galeatus</i> Vahl	1	19	4.45	76	0	6	0	0	0	0	0	0	18	0
930	Podocarpaceae	<i>Podocarpus laubenfelsii</i> Tieng	1	19	15.53	39	0	4	0	2	0	1	6	0	12	36
648	Symplocaceae	<i>Symplocos johniana</i> Stapf	1	18.8	2.86	96	0	0	0	0	0	0	0	0	4	0
544	Violaceae	<i>Viola sumatrana</i> Miq.	1	18.6	10.2	49	0	3	0	0	0	0	21	0	14	12
1205	Myristicaceae	<i>Horsfieldia xanthina</i> Aairy Shaw subsp. <i>xanthina</i>	1	18.6	18.62	32	26	5	0	0	0	2	2	1	19	14
1291	Moraceae	<i>Ficus parietalis</i> Blume	1	18.6	31.53	26	4	1	2	2	3	3	6	13	25	16
1340	Orchidaceae	<i>Bulbophyllum deltoideum</i> Ames & C.Schweinf.	1	18.4	4.99	65	0	28	0	0	1	0	4	0	0	1
161	Euphorbiaceae	<i>Mallotus lancifolius</i> Hook.f.	1	18.3	12.36	44	0	0	0	0	0	0	15	0	19	21
1238	Nepenthaceae	<i>Nepenthes tentaculata</i> Hook.f.	1	18.1	22.5	28	1	24	2	2	20	3	2	1	8	9
1406	Orchidaceae	<i>Eria farinosa</i> Ames & C.Schweinf.	1	18.1	3.07	91	0	1	0	0	0	0	6	0	0	2
1402	Orchidaceae	<i>Dendrochilum oxylobum</i> Schltr.	1	18	17.38	35	11	1	0	0	0	4	3	2	15	30
1301	Moraceae	<i>Ficus setiflora</i> Stapf	1	17.8	3.84	79	0	7	0	0	0	0	14	0	0	0
281	Umbelliferae	<i>Hydrocotyle javanica</i> Thunb.	1	17.7	24.41	27	0	25	0	0	9	0	5	12	18	3
1325	Orchidaceae	<i>Appendicula foliosa</i> Ames & Schltr.	1	17.6	12.39	42	0	1	0	0	0	0	9	15	26	7
1431	Orchidaceae	<i>Spathoglottis microchilina</i> Kraenzl.	1	17.6	10.9	46	0	0	0	0	0	0	1	0	30	23
1177	Loranthaceae	<i>Macrosolen flammeus</i> Danser	1	17.5	21.24	31	0	7	5	7	0	0	12	9	21	8
112	Euphorbiaceae	<i>Bridelia glauca</i> Blume var. <i>sosopodanica</i> Aairy Shaw S.Dressler	1	17.3	23.41	27	0	8	27	0	3	2	1	0	12	18
1421	Orchidaceae	<i>Oberonia affinis</i> Ames & C.Schweinf.	1	17.3	10.03	48	0	3	0	0	0	0	19	0	15	15
1180	Loranthaceae	<i>Macrosolen tubiflorus</i> Ridl. Danser	1	17.1	11.18	44	0	11	0	0	3	0	9	0	31	3
1430	Orchidaceae	<i>Podochilus tenuis</i> Lindl.	1	17.1	6.24	61	0	0	0	0	0	0	0	0	32	8
195	Caprifoliaceae	<i>Viburnum hispidulum</i> Kern	1	16.7	11.79	43	0	1	0	0	0	0	9	3	27	17
588	Cyperaceae	<i>Carex perakensis</i> C.B.Clark var. <i>borneensis</i> C.B.Clark Noot.	1	16.7	19	30	0	21	0	0	11	5	6	13	13	2
128	Euphorbiaceae	<i>Macaranga angulata</i> S.J.Davies	1	16.6	2.36	100	0	0	0	0	0	0	0	0	0	0
873	Araliaceae	<i>Schefflera avensis</i> Harms	1	16.6	26.63	26	0	6	0	0	14	8	2	19	19	5
1352	Orchidaceae	<i>Bulbophyllum obtusum</i> Blume Lindl.	1	16.6	2.36	100	0	0	0	0	0	0	0	0	0	0
10	Annonaceae	<i>Goniothalamus clemensii</i> Bân	1	16.5	12.94	40	0	7	0	0	1	0	16	0	12	24
1070	Meliaceae	<i>Aglaia squamulosa</i> King	1	16.4	34.13	23	0	21	0	0	20	1	8	0	22	5
559	Fagaceae	<i>Lithocarpus clementiana</i> King ex Hook.f. A.Camus	1	16.3	8.58	48	0	9	0	0	0	0	1	12	30	0
1383	Orchidaceae	<i>Coelogyne venusta</i> Rolfe	1	16.3	2.6	92	0	8	0	0	0	0	0	0	0	0
1427	Orchidaceae	<i>Pholidota pectinata</i> Ames	1	16.3	2.33	99	0	0	0	0	0	0	0	0	0	1

Table S5.1. (continued).

sp#	Family	Species	Cluster Group	IndVal	Area (in %)	1	2	3	4	5	6	7	8	9	10	11
468	Ericaceae	<i>Rhododendron orbiculatum</i> Ridl.	1	16.2	9.92	39	34	15	0	0	7	0	0	0	5	1
924	Podocarpaceae	<i>Dacrycarpus imbricatus</i> Blume de Laub. var. <i>patulus</i> de Laub.	1	16.2	22.91	28	0	17	0	19	4	0	8	4	16	4
1316	Moraceae	<i>Streblus glaber</i> Merr. Corner	1	16.2	24.71	26	0	22	0	0	12	0	4	14	10	13
1317	Orchidaceae	<i>Adenoncos parviflora</i> Ridl.	1	16.1	10.07	46	0	0	0	0	0	0	3	0	19	32
1331	Orchidaceae	<i>Bulbophyllum acutum</i> J.J.Sm.	1	16.1	2.31	99	0	0	0	0	0	0	0	0	0	1
194	Caprifoliaceae	<i>Viburnum clemensae</i> Kern	1	16	2.38	97	0	1	0	0	0	0	0	0	2	0
644	Symplocaceae	<i>Symplocos fasciculata</i> Zoll.	1	15.9	57.83	17	14	5	0	2	5	10	6	12	16	13
657	Symplocaceae	<i>Symplocos ophirensis</i> C.B.Clark subsp. <i>cumingiana</i> Brand Noot.	1	15.8	5.35	63	0	1	0	0	0	0	0	0	36	0
579	Fagaceae	<i>Quercus argentata</i> Korth.	1	15.2	13.36	38	0	6	0	2	3	0	17	1	23	11
570	Fagaceae	<i>Lithocarpus lampadarius</i> Gamble A.Camus	1	15	4.73	64	0	6	0	0	3	0	0	0	26	1
191	Burmanniaceae	<i>Burmannia longifolia</i> Becc.	1	14.8	17.38	30	0	23	0	0	20	3	14	0	5	4
1382	Orchidaceae	<i>Coelogyne subintegra</i> J.J.Sm.	1	14.8	15.66	35	0	0	0	0	0	16	10	28	11	
910	Araucariaceae	<i>Agathis lenticula</i> de Laub.	1	14.7	11.29	41	0	2	0	1	0	0	2	0	14	0
1243	Moraceae	<i>Artocarpus excelsus</i> F.M.Jarrett	1	14.7	13.12	38	0	4	0	1	0	0	7	0	14	36
444	Ericaceae	<i>Diplycosia commutata</i> Sleumer	1	14.4	2.09	99	0	0	0	0	0	0	1	0	0	1
460	Ericaceae	<i>Rhododendron fallacinum</i> Sleumer	1	14.3	2.94	82	0	0	0	0	0	0	0	0	6	12
811	Dipterocarpaceae	<i>Shorea monticola</i> P.S.Ashton	1	14.1	11.55	35	7	21	0	0	31	0	0	0	7	0
1387	Orchidaceae	<i>Dendrobium bifarium</i> Lindl. ex Hook.f.	1	14	5.14	60	0	0	0	0	0	0	0	0	4	36
149	Euphorbiaceae	<i>Macaranga rostrata</i> Heine	1	13.9	6.7	51	0	4	0	0	3	2	1	0	17	21
446	Ericaceae	<i>Diplycosia heterophylla</i> Blume var. <i>latifolia</i> Blume Sleumer	1	13.9	14.78	31	17	5	0	24	8	0	1	3	12	0
516	Haloragaceae	<i>Haloragis micrantha</i> Thunb. R.Br. ex Siebold & Zucc.	1	13.9	12.91	37	0	2	0	0	0	0	12	7	24	18
146	Euphorbiaceae	<i>Macaranga petanostyla</i> Aairy Shaw	1	13.8	2.94	81	0	0	0	0	0	0	10	0	1	8
480	Ericaceae	<i>Vaccinium bancanum</i> Miq. var. <i>tenuinervium</i> J.J.Sm.	1	13.8	19.55	26	20	8	0	3	19	0	1	2	16	5
587	Cyperaceae	<i>Carex filicina</i> Nees	1	13.6	14.25	35	0	3	0	0	0	0	27	4	24	7
1329	Orchidaceae	<i>Bromheadia ceceliae</i> Kruizinga	1	13.6	2.15	93	0	6	0	0	0	0	1	0	0	1
921	Magnoliaceae	<i>Magnolia macklotii</i> Korth. Dandy var. <i>macklotii</i>	1	13.4	2.02	95	0	5	0	0	0	0	0	0	0	0
547	Fagaceae	<i>Castanopsis costata</i> Blume A.DC.	1	13.2	8.88	43	9	0	0	6	0	0	0	0	35	7
1351	Orchidaceae	<i>Bulbophyllum nematocaulon</i> Ridl.	1	13.2	2.24	88	0	11	0	0	0	0	0	0	0	1
1426	Orchidaceae	<i>Pholidota imbricata</i> Hook.	1	12.8	11.44	36	0	27	0	0	3	1	24	0	8	0
827	Dipterocarpaceae	<i>Shorea platycladus</i> Slooten ex Enderb.	1	12.7	16.98	28	9	10	0	1	4	7	0	1	19	21
277	Thymelaeaceae	<i>Wikstroemia brachyantha</i> Merr.	1	12.6	2.56	82	0	0	0	0	0	0	6	0	1	11
925	Podocarpaceae	<i>Dacrycarpus kinabaluensis</i> Wasscher de Laub.	1	12.5	3.23	73	0	0	0	0	0	0	8</			



Table S5.1. (continued).

sp#	Family	Species	Cluster Group	IndVal	Area (in %)	1	2	3	4	5	6	7	8	9	10	11
1282	Moraceae	<i>Ficus leptocalama</i> Corner	1	10.6	4.24	57	0	0	0	0	0	0	0	0	9	33
1407	Orchidaceae	<i>Eria floribunda</i> Lindl.	1	10.6	3.57	64	0	0	0	0	0	0	11	0	2	23
1306	Moraceae	<i>Ficus tarenifolia</i> Corner	1	10.5	12.63	33	0	1	0	0	0	1	25	0	19	21
1435	Orchidaceae	<i>Trichoglottis tinekeae</i> Schuit.	1	10.5	1.48	100	0	0	0	0	0	0	0	0	0	0
580	Fagaceae	<i>Quercus lineata</i> Blume	1	10.3	11.34	32	0	15	0	9	1	0	7	11	19	7
445	Ericaceae	<i>Diplycosia fimbriata</i> Sleumer	1	10.2	1.68	93	0	0	0	0	0	0	4	0	3	0
1332	Orchidaceae	<i>Bulbophyllum aeolium</i> Ames	1	10.1	1.43	100	0	0	0	0	0	0	0	0	0	0
899	Chloranthaceae	<i>Ascarina philippinensis</i> C.B.Rob.	1	9.8	1.5	96	0	0	0	0	0	0	0	0	4	0
192	Caprifoliaceae	<i>Sambucus javanica</i> Reinw. ex Blume	1	9.4	1.6	90	0	0	0	0	0	0	0	0	0	10
223	Dilleniaceae	<i>Saurauia actinidiifolia</i> Stapf	1	9.3	6.27	44	0	0	0	0	0	0	0	0	23	33
653	Symplocaceae	<i>Symplocos laeteviridis</i> Stapf var. <i>mjöbergii</i> Merr. Noot.	1	9.3	1.36	98	0	2	0	0	0	0	0	0	0	0
1343	Orchidaceae	<i>Bulbophyllum fulvibulbum</i> J.J.Verm.	1	9.2	1.33	99	0	0	0	0	0	0	0	0	0	1
1380	Orchidaceae	<i>Coelogyne radioferens</i> Ames & C.Schweinf.	1	9.2	1.63	89	0	0	0	0	0	0	0	0	5	6
282	Umbelliferae	<i>Sanicula elata</i> Buch.-Ham. ex D.Don	1	9	1.29	99	0	0	0	0	0	0	0	0	0	1
242	Flagellariaceae	<i>Hanguana major</i> Airy Shaw	1	8.9	7.51	40	0	0	0	0	0	0	20	0	18	21
607	Cyperaceae	<i>Scirpus subcapitatus</i> Thwaites	1	8.9	4.71	51	0	0	0	0	0	0	12	0	26	12
964	Sabiaceae	<i>Sabia parviflora</i> Wall. subsp. <i>parviflora</i>	1	8.8	7.5	40	0	0	0	0	0	0	21	0	19	21
465	Ericaceae	<i>Rhododendron maxwellii</i> Gibbs	1	8.7	1.45	92	0	0	0	0	0	0	1	0	0	8
457	Ericaceae	<i>Rhododendron buxoides</i> Sleumer	1	8.5	1.84	79	0	0	0	0	0	0	0	0	1	19
1174	Loranthaceae	<i>Lepidaria sabaensis</i> Stapf Tiegh.	1	8.5	12.99	29	0	0	0	0	0	0	15	9	25	22
1412	Orchidaceae	<i>Eria major</i> Ridl. ex Stapf	1	8.5	6.95	40	0	0	0	0	0	0	19	0	20	20
392	Proteaceae	<i>Helicia pterygota</i> Sleumer	1	8.4	4.09	53	0	0	0	0	0	0	1	0	35	11
867	Araliaceae	<i>Aralia merrillii</i> C.B.Shang	1	8.4	7.6	39	0	0	0	0	0	0	21	0	18	22
443	Ericaceae	<i>Diplycosia clementium</i> Sleumer	1	8.3	1.4	91	0	0	0	0	0	0	1	0	0	8
452	Ericaceae	<i>Diplycosia urceolata</i> Stapf	1	8.3	10.45	33	0	0	0	2	0	0	29	2	25	10
997	Rosaceae	<i>Photinia davidiana</i> Decne. Cardot	1	8.3	1.4	91	0	0	0	0	0	0	1	0	0	8
1411	Orchidaceae	<i>Eria magnicallosa</i> Ames & C.Schweinf.	1	8.3	1.49	88	0	0	0	0	0	0	1	0	0	11
453	Ericaceae	<i>Gaultheria borneensis</i> Stapf	1	8.2	1.31	94	0	0	0	0	0	0	1	0	0	5
475	Ericaceae	<i>Rhododendron rugosum</i> Low ex Hook.f.	1	8.2	1.17	100	0	0	0	0	0	0	0	0	0	0
483	Ericaceae	<i>Vaccinium cordifolium</i> Stapf	1	8.2	1.31	94	0	0	0	0	0	0	1	0	0	5
933	Podocarpaceae	<i>Prumnopitys amarus</i> Blume de Laub.	1	8.2	1.31	94	0	0	0	0	0	0	1	0	0	5
283	Umbelliferae	<i>Trachymene saniculaefolia</i> Stapf	1	7.9	1.12	100	0	0	0	0	0	0	0	0	0	0
411	Campanulaceae	<i>Lobelia borneensis</i> Hemsf. Moeliono	1	7.9	1.43	88	0	0	0	0	0	0	1	0	0	12
474	Ericaceae	<i>Rhododendron retivenium</i> Sleumer	1	7.9	1.12	100	0	0	0	0	0	0	0	0	0	0
611	Balanophoraceae	<i>Balanophora lowii</i> Hook.f.	1	7.9	1.2	97	0	0	0	0	0	0	0	0	0	3
1355	Orchidaceae	<i>Bulbophyllum puntjakense</i> J.J.Sm.	1	7.9	1.12	100	0	0	0	0	0	0	0	0	0	0
251	Gnetaceae	<i>Gnetum latifolium</i> Blume var. <i>minus</i> Fowx. Markgr.	1	7.8	4.93	45	0	0	0	0	0	0	0	0	14	40
440	Ericaceae	<i>Diplycosia chrysothrix</i> Stapf	1	7.8	7.1	38	0	0	0	0	0	0	0	0	29	33
640	Symplocaceae	<i>Symplocos buxifolia</i> Stapf	1	7.7	1.1	100	0	0	0	0	0	0	0	0	0	0
1434	Orchidaceae	<i>Thrixspermum triangulare</i> Ames & C.Schweinf.	1	7.5	3.03	57	0	0	0	0	0	0	0	0	9	34
1366	Orchidaceae	<i>Cleisocentron merrillianum</i> Ames Christenson	1	7.1	2.73	58	0	0	0	0	0	0	0	0	0	42
1436	Orchidaceae	<i>Trichotomia aporina</i> Hook.f. Kraenzl.	1	7	1.95	69	0	0	0	0	0	0	0	0	1	30
472	Ericaceae	<i>Rhododendron quadrasianum</i> S.Vidal var. <i>cuneifolium</i> Stapf Cop. f.	1	6.9	1.28	86	0	0	0	0	0	0	0	0	0	14
1336	Orchidaceae	<i>Bulbophyllum ceratostylis</i> J.J.Sm.	1	6.9	0.98	100	0	0	0	0	0	0	0	0	0	0
627	Bignoniaceae	<i>Radermachera ramiflora</i> Steenis	1	6.8	12.02	27	0	0	0	0	0	2	24	2	18	27
1379	Orchidaceae	<i>Coelogyne plicatissima</i> Ames & C.Schweinf.	1	6.6	2.68	57	0	0	0	0	0	0	0	0	0	43
569	Fagaceae	<i>Lithocarpus havilandii</i> Stapf Barnett	1	6.5	0.92	100	0	0	0	0	0	0	0	0	0	0
960	Sabiaceae	<i>Meliosma lepidota</i> Blume subsp. <i>kinabaluensis</i> Beusekom	1	6.5	3.28	52	0	0	0	0	0	0	4	0	32	13
901	Elaeagnaceae	<i>Elaeagnus triflora</i> Roxb.	1	6.3	1.57	74	0	0	0	0	0	0	0	0	26	0
304	Burseraceae	<i>Canarium pilosum</i> Benn. subsp. <i>borneensis</i> Leenh.	1	6.2	3.92	46	0	0	0	0	0	0	12	0	34	8
916	Magnoliaceae	<i>Magnolia carsonii</i> Dandy ex Noot. var. <i>carsonii</i>	1	6.2	0.87	100	0	0	0	0	0	0	0	0	0	0
1350	Orchidaceae	<i>Bulbophyllum mutabile</i> Blume Lindl. var. <i>obesum</i> J.J.Verm.	1	6	0.92	95	0	0	0	0	0	0	0	0	0	5
1152	Boraginaceae	<i>Cordia dichotoma</i> G.Forst.	1	5.8	2.51	55	0	0	0	12	0	0	0	0	33	0

Table S5.1. (continued).

sp#	Family	Species	Cluster Group	IndVal	Area (in %)	1	2	3	4	5	6	7	8	9	10	11
1367	Orchidaceae	<i>Coelogyne clemensii</i> Ames & C.Schweinf.	1	5.8	1.14	83	0	0	0	0	0	0	0	0	0	0
1269	Moraceae	<i>Ficus endospermifolia</i> Corner	1	5.7	0.8	100	0	0	0	0	0	0	0	0	0	0
918	Magnoliaceae	<i>Magnolia lasia</i> Noot.	1	5.4	1.29	75	0	0	0	0	0	0	0	0	4	21
1346	Orchidaceae	<i>Bulbophyllum microglossum</i> Ridl.	1	5.3	0.75	100	0	0	0	0	0	0	0	0	0	0
1326	Orchidaceae	<i>Appendicula minutiflora</i> Ames & Schweinf.	1	4.9	0.72	98	0	0	0	0	0	0	0	0	0	2
280	Umbelliferae	<i>Eryngium foetidum</i> L.	1	3.9	0.55	100	0	0	0	0	0	0	0	0	0	0
1164	Loranthaceae	<i>Helixanthera apodanthes</i> Danser	1	3.8	1.56	57	0	0	0	0	0	0	0	0	0	17
1393	Orchidaceae	<i>Dendrobium kurashigei</i> Yukawa	1	2.8	0.4	100	0	0	0	0	0	0	0	0	0	0
922	Magnoliaceae	<i>Magnolia persuaevolens</i> Dandy subsp. <i>rigida</i> Noot.	1	2.6	0.37	100	0	0	0	0	0	0	0	0	0	0
1362	Orchidaceae	<i>Calanthe sylvatica</i> Thouars Lindl.	1	2.5	0.35	100	0	0	0	0	0	0	0	0	0	0
96	Euphorbiaceae	<i>Aporosa rhacontyloides</i> Airy Shaw	2	61.5	9.23	6	63	16	0	0	7	1	1	0	6	0
792	Dipterocarpaceae	<i>Shorea flaviflora</i> G.H.S.Wood ex P.S.Ashton	2	56.7	12.3	14	58	6	0	2	7	0	1	0	10	1
833	Dipterocarpaceae	<i>Shorea sagittata</i> Ashton	2	56.1	12.21	5	56	12	0	3	5	1	3	0	13	1
45	Annonaceae	<i>Polyalthia hookeriana</i> King	2	53	11.22	3	59	2	0	2	2	0	0	5	22	4
807	Dipterocarpaceae	<i>Shorea macroptera</i> Dyer subsp. <i>bailloni</i>	2	52.6	11.48	0	55	7	0	7	14	1	0	3	14	0
1223	Myristicaceae	<i>Knema riangensis</i> W.J.de Wilde	2	50	15.13	11	50	14	0	0	4	0	12	0	9	0
878	Araliaceae	<i>Schefflera multicaucata</i> Frodin	2	48	14.22	7	48	20	0	0	9	2	0	1	13	0
14	Annonaceae	<i>Goniothalamus uvaroioides</i> King	2	47.9	10.23	1	57	9	0	0	7	2	4	1	19	1
1260	Moraceae	<i>Ficus bruneiensis</i> Corner	2	46.5	14.82	8	46	22	0	0	8	1	1	0	12	0
680	Anacardiaceae	<i>Gluta laxiflora</i> Ridl.	2	45.9	15.19	6	49	7	0	2	2	3	5	0	22	3
848	Dipterocarpaceae	<i>Vatica coriacea</i> P.S.Ashton	2	45.6	15.03	2	46	6	18	0	5	1	1	0	18	2
369	Flacourtiaceae	<i>Hydnocarpus sumatrana</i> Miq. Koord. var. <i>pentagyna</i> Slooten Sleumer	2	44.2	18.62	8	44	7	0	1	9	1	5	1	23	1
729	Dipterocarpaceae	<i>Dipterocarpus nudus</i> Vesque	2	44	7.85	0	61	0	0	21	1	0	0	3	14	0
800	Dipterocarpaceae	<i>Shorea illisii</i> P.S.Ashton	2	43.8	15.48	0	46	3	0	9	12	6	2	3	19	0
600	Cyperaceae	<i>Mapania cuspidata</i> Miq. Uittien var. <i>cuspidata</i>	2	43.2	17.4	0	46	2	0	0	11	1	14	0	24	1
374	Flacourtiaceae	<i>Ryparosa glauca</i> Ridl.	2	42.6	16.21	7	43	21	0	0	14	2	1	3	10	0
98	Euphorbiaceae	<i>Aporosa stenostachys</i> Airy Shaw	2	42.1	16.31	0	44	3	0	8	8	6	2	3	21	3
127	Euphorbiaceae	<i>Macaranga aethadenia</i> Airy Shaw	2	41.6	14.88	1	47	4	0	0	18	0	10	0	16	4
743	Dipterocarpaceae	<i>Dryobalanops oblongifolia</i> Dyer	2	41.5	15.75	5	41	24	0	1	12	7	1	2	7	0
455	Ericaceae	<i>Rhododendron brookeanum</i> Lowe & Lindl. var. <i>brookeanum</i>	2	40.5	20.42	23	42	3	0	0	9	0	0	0	22	1
1011	Rosaceae	<i>Rubus moluccanus</i> L. var. <i>discolor</i> Blume Kalkman	2	39.9	19.04	19	43	2	0	0	7	0	1	2	24	1
1396	Orchidaceae	<i>Dendrobium secundum</i> Blume Lindl.	2	39.5	13.86	12	48	8	0	0	0	0	4	6	20	1
272	Thymelaeaceae	<i>Gonystylus nervosus</i> Airy Shaw	2	39.4	20.81	13	41	4	0	6	2	0	5	0	25	4
813	Dipterocarpaceae	<i>Shorea myrionerva</i> Symington	2	39.3	19.42	13	39	20	0	0	7	2	0	1	13	5
832	Dipterocarpaceae	<i>Shorea rubra</i> P.S.Ashton	2	38.4												

Table S5.1. (continued).

sp#	Family	Species	Cluster Group	IndVal	Area (in %)	1	2	3	4	5	6	7	8	9	10	11
860	Dipterocarpaceae	<i>Vatica odorata</i> Griff. Symington subsp. <i>mindanensis</i> Foxw. P.S.Ashton	2	33.7	26.49	16	34	5	0	8	10	0	0	1	19	1
782	Dipterocarpaceae	<i>Shorea crassa</i> P.S.Ashton	2	33.2	18.57	0	38	4	5	0	15	3	9	0	24	1
226	Dilleniaceae	<i>Saurauia amoena</i> Stapf	2	33	14.96	22	44	5	0	0	8	0	0	3	16	3
872	Araliaceae	<i>Schefflera avenis</i> Miq. Harms	2	33	24.71	18	33	10	0	21	4	0	0	1	12	0
1284	Moraceae	<i>Ficus macrostyla</i> Corner	2	33	17.19	0	40	0	0	0	19	4	14	4	18	1
364	Flacourtiaceae	<i>Hydnocarpus calophyllus</i> Ridl. Sleumer	2	32.6	25.21	6	33	15	0	0	19	1	4	0	19	4
44	Annonaceae	<i>Polyalthia flagellaris</i> Becc. Airy Shaw	2	32.3	25.87	5	33	5	0	0	25	3	3	0	22	4
788	Dipterocarpaceae	<i>Shorea faguetooides</i> P.S.Ashton	2	32	25.45	5	32	13	0	0	16	6	2	1	22	3
423	Celastraceae	<i>Lophopetalum glabrum</i> Ding Hou	2	31.9	24.44	11	34	4	0	0	14	1	4	0	24	7
79	Euphorbiaceae	<i>Antidesma riparium</i> Airy Shaw	2	31.5	14.17	15	45	1	0	0	1	0	0	3	28	7
1319	Orchidaceae	<i>Agrostophyllum trifidum</i> Schltr.	2	31.4	20.02	20	36	12	0	0	4	7	2	2	9	9
556	Fagaceae	<i>Lithocarpus bennettii</i> Miq. Rehder	2	31.3	22.28	21	37	5	0	0	1	0	6	1	30	0
352	Flacourtiaceae	<i>Casearia hosei</i> Merr.	2	31.1	16.08	21	41	5	0	0	0	0	1	8	15	10
1221	Myristicaceae	<i>Knema percoriacea</i> J.Sinclair f. <i>sarawakensis</i> W.J.de Wilde	2	30.9	25.96	2	32	1	0	9	18	5	1	1	29	3
224	Dilleniaceae	<i>Saurauia acuminata</i> Merr.	2	30.8	22.79	24	36	1	0	0	3	0	0	1	32	3
40	Annonaceae	<i>Polyalthia cauliflora</i> Hook.f. & Thomson var. <i>cauliflora</i>	2	30.7	26.55	15	31	17	0	4	9	2	0	4	13	4
1297	Moraceae	<i>Ficus rubroscupidata</i> Corner	2	30.6	26.28	14	33	3	0	7	13	0	1	2	28	0
1290	Moraceae	<i>Ficus oleifolia</i> King subsp. <i>oleifolia</i>	2	30.3	22.42	23	34	19	0	0	11	0	1	0	10	2
371	Flacourtiaceae	<i>Hydnocarpus woodii</i> Merr.	2	30.2	23.08	8	34	1	0	2	17	1	0	5	28	4
1159	Loranthaceae	<i>Barathranthus axanthus</i> Korth. Miq.	2	29.9	22.57	2	32	10	4	11	14	2	2	10	14	0
97	Euphorbiaceae	<i>Aporosa sarawakensis</i> Schot	2	29.8	27.45	10	31	12	1	7	12	2	9	1	16	0
410	Scyphostegiaceae	<i>Scyphostegia borneensis</i> Stapf	2	29.8	21.52	29	36	5	0	0	1	0	0	5	20	4
76	Euphorbiaceae	<i>Antidesma pendulum</i> Hook.f.	2	29.3	21.15	0	36	0	0	0	12	1	19	9	22	1
890	Liliaceae	<i>Smilax odoratissima</i> Blume	2	29	20.73	21	36	2	0	1	12	4	4	0	11	9
1036	Sapindaceae	<i>Nephelium daedaleum</i> Radlk.	2	28.9	30.14	1	29	1	0	12	15	3	12	4	21	2
790	Dipterocarpaceae	<i>Shorea fallax</i> Meijer	2	28.2	31.49	16	30	1	0	3	0	0	8	4	27	11
482	Ericaceae	<i>Vaccinium clementis</i> Merr.	2	27.9	23.85	27	33	11	0	1	9	1	0	1	13	5
777	Dipterocarpaceae	<i>Shorea biawak</i> P.S.Ashton	2	27.8	16.58	0	37	1	2	7	8	10	6	3	24	3
954	Polygalaceae	<i>Xanthophyllum subcoriaceum</i> Chodat Meijden	2	27.4	27.13	21	31	4	0	0	6	3	7	3	17	8
1403	Orchidaceae	<i>Dendrochilum pallidiflavens</i> Blume var. <i>pallidiflavens</i>	2	27.4	18.22	32	38	3	0	2	3	0	1	2	8	12
108	Euphorbiaceae	<i>Baccaurea pubera</i> Miq. Müll.Arg.	2	27.2	25.71	13	32	4	0	2	7	1	10	5	22	5
826	Dipterocarpaceae	<i>Shorea patiensis</i> P.S.Ashton	2	27	26.76	14	31	0	0	0	2	8	3	1	18	22
187	Euphorbiaceae	<i>Trigonopleura malayana</i> Hook.f.	2	26.8	35.27	13	28	1	0	3	4	0	11	6	26	9
456	Ericaceae	<i>Rhododendron Brookeanum</i> Lowe & Lindl. var. <i>gracile</i> Low ex Lindl. Sleumer	2	26.7	32.58	11	27	11	0	0	13	2	3	5	20	9
317	Burseraceae	<i>Santiria apiculata</i> A.W.Benn. var. <i>apiculata</i>	2	26.5	27.21	14	31	1	0	0	6	0	3	6	30	9
1086	Meliaceae	<i>Dysoxylum cauliflorum</i> Hiern	2	26.5	30.72	16	29	4	0	1	8	1	8	1	28	3
132	Euphorbiaceae	<i>Macaranga brevipetiolata</i> Airy Shaw	2	26.4	34.67	13	27	3	0	9	15	1	9	0	20	2
232	Dilleniaceae	<i>Saurauia myrmecoidea</i> Merr.	2	26.4	11.79	2	41	9	0	0	31	2	0	1	15	0
871	Araliaceae	<i>Osmoxylon borneense</i> Seem.	2	26.3	33.3	17	27	14	0	0	14	2	6	0	15	4
562	Fagaceae	<i>Lithocarpus coopertus</i> Blanco Rehder	2	26.2	35.61	18	26	9	0	9	7	0	2	3	23	2
228	Dilleniaceae	<i>Saurauia glabra</i> Merr.	2	26.1	32.18	11	26	14	0	7	18	3	1	2	18	1
179	Euphorbiaceae	<i>Pimelodendron griffithianum</i> Müll. Arg. Benth.	2	25.9	33.73	16	27	2	0	3	4	5	2	4	26	11
311	Burseraceae	<i>Dacryodes rostrata</i> Blume H.J.Lam f. <i>cuspidata</i> H.J.Lam	2	25.8	22.08	10	33	2	0	0	0	0	7	8	29	11
540	Violaceae	<i>Rinorea bengalensis</i> Wall. Kuntze	2	25.8	19.32	10	35	0	0	0	10	0	0	3	35	6
576	Fagaceae	<i>Lithocarpus pusillus</i> Soepadmo	2	25.8	21.21	20	34	1	0	9	0	1	3	4	27	2
169	Euphorbiaceae	<i>Mallotus wrayi</i> King ex Hook.f.	2	25.3	37.76	17	25	8	0	0	7	2	6	5	23	7
1248	Moraceae	<i>Artocarpus odoratissimus</i> Blanco	2	25.2	37.57	10	25	7	0	0	2	4	6	8	21	17
531	Ochnaceae	<i>Sauvagesia serrata</i> Korth. Sastre	2	24.9	32.9	5	25	13	4	1	19	3	8	2	18	2
293	Dilleniaceae	<i>Saurauia planchonii</i> Hook.f.	2	24.5	13.2	0	39	0	0	0	19	0	0	11	31	0
793	Dipterocarpaceae	<i>Shorea foxworthyi</i> Symington	2	24.5	9.12	0	48	0	0	0	6	3	5	0	38	0
268	Thymelaeaceae	<i>Gonystylus forbesii</i> Gilg	2	24.3	30.45	10	27	4	1	2	1	6	1	8	25	15
432	Celastraceae	<i>Perrottetia alpestris</i> Blume Loes. subsp. <i>philippinensis</i> Vidal Ding Hou	2	24.3	16.58	30	36	7	0	0	18	0	0	0	9	0
963	Sabiaceae	<i>Meliosma sumatrana</i> Jack Walp.	2	24.2	38.53	20	25	6	0	1	6	2	9	3	24	5

Table S5.1. (continued).

sp#	Family	Species	Cluster Group	IndVal	Area (in %)	1	2	3	4	5	6	7	8	9	10	11
733	Dipterocarpaceae	<i>Dipterocarpus rigidus</i> Ridl.	2	24.1	12.71	0	38	0	12	8	4	2	0	4	27	4
754	Dipterocarpaceae	<i>Hopea latifolia</i> Symington	2	24.1	9.08	0	46	0	0	16	4	0	1	3	30	0
834	Dipterocarpaceae	<i>Shorea scaberrima</i> Burck	2	24.1	22.08	4	31	1	2	8	18	6	2	4	26	0
478	Ericaceae	<i>Vaccinium bancaum</i> Miq.	2	24	25.03	16	30	1	3	5	8	1	4	1	25	6
751	Dipterocarpaceae	<i>Hopea fluvialis</i> P.S.Ashton	2	23.8	12.24	13	42	0	0	0	0	0	2	2	38	3
565	Fagaceae	<i>Lithocarpus ewyckii</i> Korth. Rehder	2	23.7	40.03	17	24	7	0	0	20	1	1	1	21	9
730	Dipterocarpaceae	<i>Dipterocarpus oblongifolius</i> Blume	2	23.7	39.77	17	24	7	0	3	8	4	8	5	19	6
92	Euphorbiaceae	<i>Aporosa lunata</i> Miq. Kurz	2	23.3	27.7	16	28	0	0	19	0	0	1	1	22	12
362	Flacourtiaceae	<i>Hydnocarpus anomalus</i> Merr. Sleumer	2	22.9	28.93	23	28	3	0	0	0	1	2	8	20	15
787	Dipterocarpaceae	<i>Shorea faguetoiana</i> Heim	2	22.8	39.69	8	23	5	0	4	5	8	6	5	22	14
370	Flacourtiaceae	<i>Hydnocarpus tenuipetala</i> Sleumer	2	22.7	2.5	0	76	0	0	0	0	0	0	0	23	0
55	Annonaceae	<i>Popowia piscarpa</i> Endl.	2	22.6	40.08	14	24	0	0	1	0	0	10	10	22	17
857	Dipterocarpaceae	<i>Vatica oblongifolia</i> Hook.f. subsp. <i>crassilobata</i> P.S.Ashton	2	22.6	17.16	21	35	4	0	11	0	1	1	0	20	6
1039	Sapindaceae	<i>Nephelium subfalcatum</i> Radlk.	2	22.6	3.85	0	65	0	0	3	0	1	1	0	29	0
1059	Meliaceae	<i>Aglaia macrocarpa</i> Miq. Pannell	2	22.6	27.81	15	28	2	0	5	0	1	9	5	15	21
1254	Moraceae	<i>Ficus androchaete</i> Corner	2	22.6	32.44	18	26	4	0	0	21	1	5	0	18	6
109	Euphorbiaceae	<i>Baccaurea sarawakensis</i> Pax & K.Hoffm.	2	22.5	40.52	9	23	9	0	8	14	3	8	4	21	2
99	Euphorbiaceae	<i>Aporosa subcaudata</i> Merr.	2	22.3	41.81	15	24	1	0	0	4	1	9	4	24	18
4	Annonaceae	<i>Cyathocalyx havilandii</i> Boerl.	2	22	38.53	3	22	7	2	0	12	15	4	8	18	10
537	Oxalidaceae	<i>Sarcotheca ochracea</i> Hallier f.	2	22	11.67	0	39	0	0	5	7	7	0	6	26	10
737	Dipterocarpaceae	<i>Dipterocarpus verrucosus</i> Foxw. ex Slooten	2	22	20.31	5	31	1	0	19	3	3	0	3	26	8
455	Euphorbiaceae	<i>Mallotus caudatus</i> Merr.	2	21.9	39.75	16	23	4	1	0	1	5	3	7	22	16
134	Celastraceae	<i>Salacia korthalsiana</i> Miq.	2	21.9	14.49	5	38	0	0	0	0	0	8	4		

Table S5.1. (continued).

sp#	Family	Species	Cluster Group	IndVal	Area (in %)	1	2	3	4	5	6	7	8	9	10	11
909	Araucariaceae	<i>Agathis endertii</i> Meijer Drees	2	11.8	16.78	6	25	5	0	0	1	23	1	4	15	19
360	Flacourtiaceae	<i>Homalium moultonii</i> Merr.	2	4.8	2.38	0	41	0	0	15	0	0	0	10	34	0
1007	Rosaceae	<i>Rubus benguetensis</i> Elmer	3	36.8	19.86	35	16	40	0	0	3	1	2	0	3	1
1357	Orchidaceae	<i>Bulbophyllum sopoetanense</i> Schltr.	3	36.8	20.31	34	10	41	0	0	7	1	3	0	4	2
1428	Orchidaceae	<i>Pholidota ventricosa</i> Blume Rchb.f.	3	33.8	16.88	38	15	42	0	0	3	0	0	0	2	0
513	Clethraceae	<i>Clethra canescens</i> Reinw. ex Blume var. <i>clementis</i> Merr. Sleumer	3	25.9	26.4	30	9	31	0	0	10	1	0	0	14	5
1344	Orchidaceae	<i>Bulbophyllum lobbii</i> Lindl.	3	25.9	18.13	24	32	33	0	0	3	0	0	1	6	1
1391	Orchidaceae	<i>Dendrobium indivisum</i> Blume Miq.	3	24.3	36.52	21	13	25	0	0	5	2	8	0	19	6
892	Olacaceae	<i>Erythralium scandens</i> Blume	3	18.6	39.17	21	0	22	0	0	15	5	4	0	20	12
1285	Moraceae	<i>Ficus megaleia</i> Corner	3	15.4	36.1	16	7	20	0	6	9	1	9	11	9	11
927	Podocarpaceae	<i>Nageia wallichiana</i> Kuntze	3	10.2	19.4	14	1	22	0	0	17	6	5	18	9	9
720	Dipterocarpaceae	<i>Dipterocarpus costulatus</i> Sloot.	4	33.4	12.62	0	0	0	50	0	0	0	8	1	36	6
118	Euphorbiaceae	<i>Chondrostylis bancana</i> Boerl.	4	27.4	13.4	0	3	0	42	0	14	12	17	0	10	3
714	Dipterocarpaceae	<i>Dipterocarpus borneensis</i> Slooten	4	27.3	19.66	0	5	0	34	0	5	11	6	11	25	3
1394	Orchidaceae	<i>Dendrobium lobatum</i> Blume Miq.	4	25.3	16.11	0	0	0	43	0	0	0	27	0	15	18
303	Bursaraceae	<i>Canarium patentinervium</i> Miq.	4	18.6	29.53	0	5	0	23	0	2	13	2	23	23	8
1162	Loranthaceae	<i>Dendrophthoe longituba</i> Elmer Danser	4	15.8	12.77	8	20	0	32	4	1	1	0	7	23	5
1073	Meliaceae	<i>Chisocheton amabilis</i> Miq.	5	61.2	14.36	0	0	0	0	63	0	0	9	16	10	3
1178	Moraceae	<i>Ficus heterophylla</i> L.f.	5	50.6	14.97	0	0	0	0	55	0	1	1	24	6	14
1267	Loranthaceae	<i>Helixanthera setigera</i> Korth. Danser	5	45.9	12.42	0	0	0	0	57	0	0	0	29	10	5
770	Dipterocarpaceae	<i>Shorea albidia</i> Symington	5	42.8	8.7	0	0	0	0	69	0	0	4	1	25	1
438	Ericaceae	<i>Costera ovalifolia</i> J.J.Sm.	5	42.2	17.42	13	8	0	0	49	0	2	3	3	13	10
189	Amaranthaceae	<i>Alternanthera sessilis</i> L. R.Br. ex DC.	5	41	20.24	0	0	0	0	42	2	0	3	41	7	5
1116	Caesalpinaceae	<i>Bauhinia kockiana</i> Korth. var. <i>velutina</i> de Wit K.Larsen & S.S.Larsen	5	35	17.7	0	1	0	0	46	12	0	32	1	8	0
1182	Loranthaceae	<i>Scurrella lepidota</i> Blume G.Don	5	34.2	19.02	0	0	0	0	40	1	0	3	38	6	13
950	Polygalaceae	<i>Xanthophyllum ramiflorum</i> Meijden	5	32.5	20.3	0	2	0	34	36	2	5	1	7	14	0
740	Dipterocarpaceae	<i>Dryobalanops fusca</i> Slooten	5	31.9	12.62	0	0	0	0	47	4	1	2	39	7	0
1267	Moraceae	<i>Ficus depressa</i> Blume	5	30.5	24.97	12	2	0	0	37	2	0	15	1	27	4
843	Dipterocarpaceae	<i>Shorea teysmanniana</i> Dyer	5	27.6	16.03	0	0	0	1	40	2	2	4	30	19	2
95	Euphorbiaceae	<i>Aporosa octandra</i> Buch.-Ham. ex D.Don Vickers var. <i>malesiana</i> Schot	5	27.3	18.97	0	0	0	1	38	9	2	18	19	11	3
1416	Orchidaceae	<i>Eria xanthochela</i> Ridl.	5	26.8	20.16	1	8	5	0	35	21	4	15	4	6	0
1044	Sapindaceae	<i>Xerospermum laevigatum</i> Radlk. subsp. <i>acuminatum</i> Radlk. Leenh.	5	25.2	21.23	0	0	0	7	34	0	6	0	14	27	11
148	Euphorbiaceae	<i>Macaranga punctulata</i> Gage	5	24.8	30.43	1	0	0	11	28	1	2	11	22	19	5
181	Euphorbiaceae	<i>Sauropus androgynus</i> L. Merr.	5	24.2	34.7	0	5	0	0	26	9	5	3	19	22	9
1311	Moraceae	<i>Ficus villosa</i> Blume	5	23.4	30.21	19	4	8	0	28	5	0	1	3	19	12
1314	Moraceae	<i>Parartocarpus venenosus</i> Becc.	5	22.3	25.52	15	4	2	4	31	0	2	8	1	23	9
267	Thymelaeaceae	<i>Gonystylis bancanus</i> Miq. Kurz	5	22.1	20.35	0	1	0	0	32	11	0	0	26	28	1
1128	Caesalpinaceae	<i>Copaifera palustris</i> Symington de Wit	5	21.9	31.21	0	5	0	5	26	5	9	9	20	20	3
1179	Loranthaceae	<i>Macrosolen retusus</i> Jack Miq.	5	21.6	20.4	0	0	1	11	31	2	4	12	26	12	0
817	Dipterocarpaceae	<i>Shorea ovalis</i> Korth. Blume	5	21.4	43.85	3	1	0	1	22	4	9	4	19	20	16
1097	Meliaceae	<i>Sandaricum beccarianum</i> Baill.	5	21	19.24	0	0	0	3	32	0	1	1	31	23	9
413	Campanulaceae	<i>Pentaphragma acuminatum</i> Airy Shaw	5	20.9	17.24	32	0	25	0	34	2	0	0	0	6	0
403	Rhizophoraceae	<i>Combretocarpus rotundatus</i> Miq. Danser	5	20.1	25.79	0	0	0	11	27	1	1	4	21	24	12
783	Dipterocarpaceae	<i>Shorea cuspidata</i> P.S.Ashton	5	20	7.01	0	4	0	1	52	4	0	2	9	28	0
343	Dichapetalaceae	<i>Dichapetalum gelonioides</i> Roxb. Engl. subsp. <i>sumatranum</i> Miq. Leenh.	5	19.6	23.31	10	9	0	0	29	0	0	1	9	24	17
338	Connaraceae	<i>Ellipanthus tomentosus</i> Kurz var. <i>tomentosus</i>	5	18.1	11.09	0	0	0	3	40	1	1	3	15	36	0
1191	Myristicaceae	<i>Horsfieldia crassifolia</i> Hook.f. & Thomson Warb.	5	17.2	11.01	0	0	0	0	39	0	0	0	19	33	8
628	Cornaceae	<i>Mastixia eugenioides</i> K.M.Matthew	5	16.9	27.2	0	18	0	1	23	9	11	2	16	20	1
1185	Viscaceae	<i>Viscum ovalifolium</i> DC.	5	16.8	35.82	7	4	2	0	22	15	0	11	14	19	5
595	Cyperaceae	<i>Fimbristylis ferruginea</i> L. Vahl	5	16.7	14.1	0	0	0	2	34	0	0	6	32	22	4
3	Annonaceae	<i>Cyathocalyx biovulatus</i> Boerl.	5	16.1	7.79	0	0	0	0	45	0	0	1	17	37	0
880	Araliaceae	<i>Schefflera tetrandra</i> Merr.	5	15.9	16.47	0	20	0	18	28	6	3	1	4	20	0
1266	Moraceae	<i>Ficus deltaeoides</i> Jack subsp. <i>motleyana</i> Miq. C.C.Berg	5	14.2	43.79	3	6	0	13	17	12	5	9	12	17	4
1156	Daphniphyllaceae	<i>Daphniphyllum laurinum</i> Benth. Baill.	5	14.1	13	8	4	0	0	34	1	0	6	4	33	11

Table S5.1. (continued).

sp#	Family	Species	Cluster Group	IndVal	Area (in %)	1	2	3	4	5	6	7	8	9	10	11	
119	Euphorbiaceae	<i>Chondrostylis kunsteri</i> King ex Hook.f. Airy Shaw	5	13.7	6.55	0	36	0	6	39	1	0	0	1	3	14	0
239	Dioscoriaceae	<i>Dioscorea pyriformis</i> Kunth	5	13.6	18.83	6	7	0	0	27	4	1	2	20	19	13	
326	Bursaraceae	<i>Santiria rubiginosa</i> Blume var. <i>pedicellata</i> Ridl. Kalkman	5	13.3	11.5	0	0	0	12	32	2	0	3	28	22	0	
1409	Orchidaceae	<i>Eria leiophylla</i> Lindl.	5	12.2	26.08	21	3	5	0	23	14	0	7	0	22	6	
116	Euphorbiaceae	<i>Cephalomappa paludicola</i> Airy Shaw	5	10	1.67	0	0	0	0	72	0	0	3	21	4	0	
693	Anacardiaceae	<i>Parishia insignis</i> Hook.f.	5	9.5	14.49	0	6	0	0	27	0	0	17	5	25	20	
1006	Rosaceae	<i>Prunus turfosa</i> Kalkman	5	8.9	7.9	0	4	0	0	33	23	2	13	7	18	0	
261	Thymelaeaceae	<i>Aetoxylon sympetalum</i> Steenis & Domke Airy Shaw	5	8.5	26.21	0	10	0	11	17	9	6	13	17	16	0	
102	Euphorbiaceae	<i>Baccaurea brevipes</i> Hook.f.	5	3.9	2.94	0	27	0	0	34	2	0	7	13	17	0	
573	Fagaceae	<i>Lithocarpus meijeri</i> Soepadmo	6	26.6	19.06	13	22	7	0	0	36	0	0	0	21	0	
138	Euphorbiaceae	<i>Macaranga hoesi</i> King ex Hook.f.	6	22.6	31.4	1	11	2	0	13	26	7	12	5	22	2	
840	Dipterocarpaceae	<i>Shorea stenoptera</i> Burck	6	22	27.46	0	20	10	2	3	25	9	3	19	10	0	
135	Euphorbiaceae	<i>Macaranga costulata</i> Pax & K.Hoffm.	6	20.5	36.87	14	12	8	0	4	23	1	6	10	21	1	
230	Dilleniaceae	<i>Saurauia javanica</i> Nees Hoogland	6	17.7	39.23	19	6	18	0	0	21	1	0	9	19	5	
1277	Moraceae	<i>Ficus hemsleyana</i> King	6	15.9	38.18	14	19	12	0	3	20	2	8	2	20	1	
536	Oxalidaceae	<i>Sarcotheca macrophylla</i> Blume	6	12.2	38.87	0	14	8	10	8	16	11	13	6	6	8	
234	Dilleniaceae	<i>Saurauia subcordata</i> Korth.	6	10.6	9.79	19	0	12	0	33	0	0	18	14	4	0	
785	Dipterocarpaceae	<i>Shorea elliptica</i> Burck	6	10.4	14.82	0	24	5	1	12	24	3	9	7	16	0	
884	Liliaceae	<i>Peliosanthes teta</i> Andrews subsp. <i>humilis</i> Andr. Jessop	8	36.2	17.09	3	0	0	0	1	3	0	52	12	28	1	
1088	Meliaceae	<i>Dysoxylum grande</i> Hiern	8	21	17.72	20	0	1	0	0	3	2	40	0	33	1	
52	Annonaceae	<i>Polyalthia xanthopetalata</i> Merr.	8	16	16.16	1	0	0	0	0	1	0	34	23	33	8	
985	Mimosaceae	<i>Archidendron clypearia</i> Jack I.C.Nielsen var. <i>casai</i> Blanco I.C.Nielsen	8	15.5	38.89	12	0	3	0	0</							

Table S5.1. (continued).

sp#	Family	Species	Cluster Group	IndVal	Area (in %)	1	2	3	4	5	6	7	8	9	10	11
68	Euphorbiaceae	<i>Antidesma coriaceum</i> Tul.	9	21.9	26.94	2	5	0	11	20	0	1	1	27	23	9
183	Euphorbiaceae	<i>Shirakiopsis indica</i> Willd. Esser	9	20.9	14.12	0	0	0	5	3	0	0	0	39	38	15
429	Celastraceae	<i>Lophopetalum wightianum</i> Arn.	9	20.1	16	0	0	0	2	0	0	1	16	37	12	32
989	Mimosaceae	<i>Archidendron jiringa</i> Jack I.C.Nielsen	9	20.1	20.15	0	0	0	0	0	1	12	12	32	16	28
197	Combretaceae	<i>Combretum tetralophum</i> C.B.Clark	9	19.6	11.01	0	0	0	0	11	1	1	0	42	22	23
708	Labiatae	<i>Hyptis capitata</i> Jacq.	9	19	23.71	8	0	1	1	12	3	0	4	29	28	15
861	Dipterocarpaceae	<i>Vatica rassak</i> Korth. Blume	9	19	44.77	5	0	0	5	20	1	10	6	20	16	17
1146	Caesalpinaceae	<i>Sindora coriacea</i> Prain	9	18.9	14.77	6	0	0	0	0	0	2	9	37	21	26
1310	Moraceae	<i>Ficus umigera</i> Miq.	9	18.3	39.37	22	1	4	0	10	4	4	1	22	12	19
178	Euphorbiaceae	<i>Omphalea sargentii</i> Merr.	9	17.9	21.76	9	0	0	0	0	0	0	13	30	25	22
688	Anacardiaceae	<i>Mangifera laurina</i> Blume	9	17.2	19.2	0	0	0	5	0	1	3	4	31	26	30
591	Cyperaceae	<i>Cyperus javanicus</i> Houtt.	9	16.9	12.23	0	0	0	11	13	2	1	2	36	25	11
218	Dilleniaceae	<i>Dillenia eximia</i> Miq.	9	16.8	16.7	0	0	0	0	0	8	3	1	32	27	29
1161	Loranthaceae	<i>Dendrophloe curvata</i> Blume Miq.	9	16.7	18.3	1	0	0	6	24	3	1	4	30	25	5
667	Ulmaceae	<i>Trema cannabina</i> Lour.	9	16.6	60.36	2	1	0	5	11	8	10	14	17	16	16
896	Oleaceae	<i>Strombosia javanica</i> Blume	9	14.4	10.35	0	0	0	0	18	0	1	9	37	5	30
199	Combretaceae	<i>Quisqualis indica</i> L.	9	13.9	22.89	0	0	0	8	17	1	10	10	24	10	21
594	Cyperaceae	<i>Fimbristylis cymosa</i> R.Br.	9	13.8	14.62	0	0	0	5	23	1	0	3	30	27	10
345	Dichapetalaceae	<i>Dichapetalum grandifolium</i> Ridl.	9	13.6	15.88	15	0	0	0	0	0	1	9	31	21	22
589	Cyperaceae	<i>Cyperus brevifolius</i> Rottb. Hassk.	9	12.9	24.94	16	5	1	2	1	1	3	9	24	24	14
1275	Moraceae	<i>Ficus grossularioides</i> Burm.f. var. <i>grossularioides</i>	9	11.3	17.17	0	3	0	0	22	18	6	5	25	15	7
605	Cyperaceae	<i>Schoenus calostachyus</i> R.Br. Poir.	9	11.2	12.08	0	0	0	2	28	1	2	9	30	26	2
707	Labiatae	<i>Hyptis brevipes</i> Poit.	9	11.1	35.19	12	0	9	3	14	4	7	7	18	12	15
642	Symplocaceae	<i>Symplocos cochinchinensis</i> Lour. S.Moore subsp. <i>cochinchinensis</i>	9	10.6	20.68	19	0	15	0	14	8	1	11	22	3	7
709	Labiatae	<i>Leucas zeylanica</i> L. R.Br.	9	8	8.32	0	0	0	0	27	0	0	4	31	30	8
66	Euphorbiaceae	<i>Aleurites moluccana</i> L. Willd.	9	6.4	7.99	6	0	0	6	6	0	0	5	29	26	22
956	Polygalaceae	<i>Xanthophyllum trichocladium</i> Chodat	10	55.6	13.51	1	3	0	0	0	4	0	2	11	70	10
273	Thymelaeaceae	<i>Gonystylus stenosepalus</i> Airy Shaw	10	55	13.1	1	15	0	0	0	15	0	1	1	68	0
63	Annonaceae	<i>Uvaria sorzogonensis</i> C.Presl	10	53.3	9.75	4	0	0	0	0	0	0	1	1	83	11
209	Convolvulaceae	<i>Erycibe stenophylla</i> Hoogland	10	51.1	11.09	8	1	0	0	0	0	0	1	0	76	14
768	Dipterocarpaceae	<i>Shorea agami</i> P.S.Ashton	10	50.4	11.12	5	1	0	0	0	0	0	0	4	75	15
1175	Loranthaceae	<i>Loxanthera speciosa</i> Blume	10	50.4	18.78	4	3	0	2	12	1	0	6	15	55	1
1228	Myristicaceae	<i>Myristica depressa</i> W.J.de Wilde	10	50.4	11.67	0	1	0	1	14	0	0	1	13	70	1
967	Chrysobalaceae	<i>Kosteranthus heteropetalus</i> Scort. ex King Prance	10	50.3	11.43	11	0	0	0	0	0	0	0	0	75	14
93	Euphorbiaceae	<i>Aporosa nigricans</i> Hook.f.	10	50.1	8.71	3	0	0	0	0	0	0	0	1	85	11
767	Dipterocarpaceae	<i>Shorea acuminatissima</i> Symington	10	49.8	12.23	4	0	0	0	0	0	0	0	7	71	18
797	Dipterocarpaceae	<i>Shorea havilandii</i> Brandis	10	49.8	19.81	4	2	0	0	13	3	0	6	10	54	8
853	Dipterocarpaceae	<i>Vatica mangachapoi</i> Blanco	10	48.9	15.38	8	0	0	0	13	0	0	2	0	62	16
500	Loganiaceae	<i>Narrisia maior</i> Soler.	10	48	16.65	12	3	0	0	8	0	0	0	0	59	18
47	Annonaceae	<i>Polyalthia insignis</i> Hook.f. Airy Shaw	10	46.7	14.22	17	0	0	0	1	0	0	1	5	64	11
1125	Caesalpinaceae	<i>Caesalpinia major</i> Medik. Dandy & Exell	10	46.5	10.1	0	0	0	0	5	0	0	2	9	74	9
1120	Caesalpinaceae	<i>Bauhinia wrayi</i> Prain ex King var. <i>borneensis</i> K.Larsen & S.S.Larsen	10	46	20.88	3	9	0	0	0	7	2	8	9	50	13
1224	Myristicaceae	<i>Knema stylosa</i> W.J.de Wilde W.J.de Wilde	10	45.9	16.15	19	6	0	0	0	0	0	5	1	59	9
288	Bursaceae	<i>Canarium caudatum</i> King f. <i>caudatum</i>	10	45.7	16.14	11	10	0	0	2	0	4	0	6	57	9
836	Dipterocarpaceae	<i>Shorea scrobiculata</i> Burck	10	45	15.82	10	26	0	0	0	0	0	1	4	55	5
1118	Caesalpinaceae	<i>Bauhinia semibifida</i> Roxb.	10	44.8	17.37	8	7	0	0	1	0	1	17	0	56	9
366	Flacourtiaceae	<i>Hydnocarpus gracilis</i> Slooten Sleumer	10	44.6	12.03	5	0	0	0	0	0	2	2	0	68	23
936	Polygalaceae	<i>Xanthophyllum adenotus</i> Miq. var. <i>adenotus</i>	10	44.6	15.33	14	14	0	0	0	0	0	0	6	58	9
1274	Moraceae	<i>Ficus globosa</i> Blume	10	44.4	11.72	7	0	0	0	2	0	0	11	8	69	3
1021	Sapindaceae	<i>Guioa bijuga</i> Hiern Radlk.	10	44.2	14.43	15	0	0	0	0	0	0	0	2	62	20
543	Violaceae	<i>Rinorea longiracemosa</i> Kurz Craib	10	44	21.81	17	1	0	0	0	0	0	8	12	50	13
32	Annonaceae	<i>Orophea corymbosa</i> Blume Miq.	10	43.7	12.66	3	0	0	2	0	2	1	6	14	64	9
389	Proteaceae	<i>Helicia fuscotomentosa</i> Suess.	10	43.7	12.56	21	2	2	0	0	3	0	1	5	66	1
845	Dipterocarpaceae	<i>Shorea xanthophylla</i> Symington	10	43.4	16.1	9	21	0	0	0	1	0	0	4	54	12
805	Dipterocarpaceae	<i>Shorea laxa</i> Slooten	10	42.9	15.72	4	5	0	0	3	0	1	5	3	57	21
695	Anacardiaceae	<i>Parishia sericea</i> Ridl.	10	42.6	14	17	4	0	0	0	0	0	2	1	62	14

Table S5.1. (continued).

sp#	Family	Species	Cluster Group	IndVal	Area (in %)	1	2	3	4	5	6	7	8	9	10	11
373	Flacourtiaceae	<i>Ryparosa acuminata</i> Merr.	10	42.4	20.22	12	19	0	0	0	3	0	4	7	48	7
428	Celastraceae	<i>Lophopetalum subobovatum</i> King	10	42.4	14.29	2	0	0	20	0	2	0	5	14	56	1
1074	Meliaceae	<i>Chisocheton erythrocarpus</i> Hiern	10	42	15.1	7	2	0	19	0	0	1	1	0	56	14
979	Mimosaceae	<i>Albizia kostermansii</i> I.C.Nielsen	10	41.9	12.16	6	0	0	0	0	0	0	13	0	66	14
1010	Rosaceae	<i>Rubus moluccanus</i> L. var. <i>angulosus</i> Kalkman	10	41.6	13.02	7	1	0	0	0	0	0	14	0	64	14
1106	Caesalpinaceae	<i>Bauhinia diptera</i> Miq.	10	41.5	11.27	1	0	0	0	1	0	0	0	11	66	21
1079	Meliaceae	<i>Chisocheton pentandrus</i> Blanco Merr. subsp. <i>paucijugus</i> Miq. Mabb.	10	41.4	22.34	18	4	0	0	0	0	0	9	6	48	15
498	Loganiaceae	<i>Fagraea ridleyi</i> King & Gamble	10	41.3	13.58	15	6	0	0	0	5	0	1	11	59	2
809	Dipterocarpaceae	<i>Shorea macropterifolia</i> P.S.Ashton	10	40	14.9	6	29	0	0	0	2	2	0	0	52	9
618	Hypericaceae	<i>Cratoxylum arborescens</i> Vahl Blume var. <i>arborescens</i>	10	39.9	18.56	16	14	0	0	3	0	0	0	5	49	12
801	Dipterocarpaceae	<i>Shorea isoptera</i> P.S.Ashton	10	39.9	7.08	0	2	0	0	0	0	0	0	15	82	1
21	Annonaceae	<i>Mezzettia havilandii</i> Boerl. Ridl.	10	39.8	14.49	2	5	0	5	8	1	0	1	22	54	2
222	Dilleniaceae	<i>Dillenia sumatrana</i> Miq.	10	39.8	18.98	5	15	0	12	2	1	0	1	7	46	12
157	Euphorbiaceae	<i>Mallotus floribundus</i> (Blume) Müll. Arg.	10	39.7	25.06	4	2	0	0	0	10	1	3	27	41	12
780	Dipterocarpaceae	<i>Shorea confusa</i> P.S.Ashton	10	39.6	10.7	0	0	0	0	2	0	0	0	15	66	17
838	Dipterocarpaceae	<i>Shorea slootenii</i> G.H.S.Wood	10	39.6	9.36	0	16	0	0	0	0	12	0	3	67	1
245	Gnetaceae	<i>Gnetum diminutum</i> Markgr.	10	39.4	18.76	8	18	0	6	3	2	0	1	5	47	11
341	Dichapetalaceae	<i>Dichapetalum gelanioides</i> Roxb. Engl.	10	39.4	12.51	4	2	0	0	0	8	2	8	0	62	14
355	Flacourtiaceae	<i>Flacourtia jangomas</i> Lour. Raeusch.	10	39.4	15.03	2	1	0	7	10	0	0	13	9	55	4
399	Rhizophoraceae	<i>Carallia borneensis</i> Oliv.	10	39.4	22.3	9	0	0	0	0	1	0	0	21	45	23
27	Annonaceae	<i>Monocarpia borneensis</i>														

Table S5.1. (continued).

sp#	Family	Species	Cluster Group	IndVal	Area (in %)	1	2	3	4	5	6	7	8	9	10	11
1292	Moraceae	<i>Ficus pellucidopunctata</i> Griff.	10	35.3	24.64	7	0	0	0	2	11	1	2	20	40	16
1062	Meliaceae	<i>Aglaia odoratissima</i> Blume	10	35.2	25.98	16	7	0	0	3	0	0	5	9	40	20
988	Mimosaceae	<i>Archidendron ellipticum</i> Blume I.C.Nielsen	10	35	26.29	10	17	0	0	0	5	0	4	8	38	17
578	Fagaceae	<i>Lithocarpus urceolaris</i> Jack Merr.	10	34.9	20.52	7	0	0	0	0	0	0	6	12	45	29
773	Dipterocarpaceae	<i>Shorea argentifolia</i> Symington	10	34.9	19.42	13	32	0	0	0	2	0	2	0	43	8
1099	Meliaceae	<i>Sandoricum koetjape</i> Burm.f. Merr.	10	34.9	23.28	14	3	0	0	0	2	2	4	20	41	14
1165	Loranthaceae	<i>Helixanthera coccinea</i> Jack Danser	10	34.9	20.47	7	0	0	1	14	2	0	6	15	44	11
913	Ixonanthaceae	<i>Ixonanthes reticulata</i> Jack	10	34.7	28.47	12	4	0	1	0	8	3	6	25	36	5
584	Passifloraceae	<i>Adenia cordifolia</i> Blume Engl.	10	34.6	23.34	8	1	0	0	18	0	0	1	10	41	20
1085	Meliaceae	<i>Dysoxylum brachybotrys</i> Merr.	10	34.5	18.57	0	25	0	0	2	9	1	15	3	44	2
163	Euphorbiaceae	<i>Mallotus miquelianus</i> (Scheff.) Boerl.	10	34.3	25.95	8	2	0	0	2	6	0	4	26	38	15
1230	Myristicaceae	<i>Myristica guatterifolia</i> A.DC.	10	34.3	9.44	4	0	0	0	0	0	0	0	7	67	23
524	Icacinaeae	<i>Sarcostigma paniculata</i> Pierre	10	34.2	26.51	11	0	0	0	1	11	2	6	27	38	5
747	Dipterocarpaceae	<i>Hopea cernua</i> Teijsm. & Binn.	10	34.1	20.3	14	2	0	0	0	0	0	5	4	46	29
1052	Meliaceae	<i>Aglaia grandis</i> Korth. ex Miq.	10	34.1	14.32	29	0	0	0	0	0	0	1	2	56	12
1308	Moraceae	<i>Ficus treubii</i> King	10	34.1	23.46	26	23	0	0	0	0	0	0	0	40	10
1295	Moraceae	<i>Ficus recurva</i> Blume var. <i>pedicellata</i> Corner	10	34	19.04	15	33	0	0	1	0	1	0	3	42	6
86	Euphorbiaceae	<i>Aporosa elmeri</i> Merr.	10	33.9	25.46	17	12	1	0	0	0	0	11	4	39	15
1043	Sapindaceae	<i>Trigonachras acuta</i> Radlk.	10	33.9	10.63	7	0	0	0	0	0	1	11	1	64	16
553	Fagaceae	<i>Castanopsis motleyana</i> King	10	33.8	15.9	9	3	0	2	8	0	1	0	12	49	16
732	Dipterocarpaceae	<i>Dipterocarpus palembanicus</i> Slooten	10	33.8	10.46	0	16	0	0	1	1	5	0	5	59	14
51	Annonaceae	<i>Polyalthia tenuipes</i> Merr.	10	33.7	7.08	11	0	0	0	0	0	0	0	7	77	5
130	Euphorbiaceae	<i>Macaranga bancana</i> Miq. Müll.Arg.	10	33.7	21.03	9	6	1	0	1	7	5	3	19	42	8
358	Flacourtiaceae	<i>Homalium foetidum</i> Roxb. Benth.	10	33.7	24.97	8	7	0	0	0	8	1	7	19	38	13
170	Euphorbiaceae	<i>Melanolepis multiglandulosa</i> Reinw. ex Blume Rchb.f. & Zoll.	10	33.4	15.36	15	0	0	0	0	0	1	0	5	52	27
348	Erythroxylaceae	<i>Erythroxylum ecarinatum</i> Burck	10	33.4	8.64	1	6	0	0	3	0	0	2	1	68	20
772	Dipterocarpaceae	<i>Shorea andulensis</i> P.S.Ashton	10	33.4	12.74	5	37	0	0	0	3	2	0	0	50	3
1101	Meliaceae	<i>Walsura ahermiana</i> Perk.	10	33.3	8.5	23	0	0	0	0	0	0	0	4	71	2
380	Flacourtiaceae	<i>Scolopia spinosa</i> Roxb. Warb.	10	33.1	23.57	7	0	0	0	0	0	0	16	12	41	24
421	Celastraceae	<i>Loeseneriella pauciflora</i> DC. A.C.Sm.	10	33.1	12.01	0	0	0	3	10	0	0	0	19	55	13
905	Menispermaceae	<i>Hysserpa nitida</i> Miers	10	33.1	11.06	9	0	0	0	0	0	0	0	14	60	16
217	Dilleniaceae	<i>Dillenia excelsa</i> Jack Martelli var. <i>pubescens</i> Corner Masam.	10	33	11.18	5	0	0	4	0	0	0	0	13	59	19
426	Celastraceae	<i>Lophopetalum rigidum</i> Ridl.	10	33	21.31	8	22	0	1	22	4	0	1	1	39	0
968	Chrysobalaceae	<i>Licania splendens</i> Korth. Prance	10	33	23.1	5	1	0	0	4	0	0	7	26	40	17
992	Mimosaceae	<i>Entada rheedii</i> Spreng.	10	33	22.15	13	0	0	0	0	6	0	0	15	42	24
1056	Meliaceae	<i>Aglaia leptantha</i> Miq.	10	33	24.15	23	0	0	2	4	0	0	6	9	41	15
745	Dipterocarpaceae	<i>Hopea beccariana</i> Burck	10	32.9	22.77	11	6	0	0	19	0	0	3	5	40	15
346	Erythroxylaceae	<i>Erythroxylum burmanicum</i> Griff.	10	32.7	17.05	4	5	0	0	0	0	1	0	19	46	24
641	Symplocaceae	<i>Symplocos celastrifolia</i> Griff. ex C.B.Clarke	10	32.7	21.58	5	3	0	4	17	0	0	0	23	40	9
496	Loganiaceae	<i>Fagraea fragrans</i> Roxb.	10	32.6	29.98	3	7	0	0	18	6	1	5	12	34	14
844	Dipterocarpaceae	<i>Shorea venulosa</i> G.H.S.Wood ex Meijer	10	32.6	11.32	11	17	0	0	0	0	0	0	8	56	8
334	Connaraceae	<i>Connarus odoratus</i> Hook.f.	10	32.5	22.39	3	3	0	0	5	23	1	4	9	40	13
937	Polygalaceae	<i>Xanthophyllum adenotus</i> Miq. var. <i>arsatii</i> C.E.C.Fisch. W.J.de Wilde & Duyfjes	10	32.4	22.49	1	19	0	1	12	10	0	11	5	38	3
56	Annonaceae	<i>Popowia tomentosa</i> Maingay ex Hook.f. & Thomson	10	32.3	13.55	6	0	0	0	0	0	0	24	0	56	15
819	Dipterocarpaceae	<i>Shorea ovalis</i> Korth. Blume subsp. <i>sarawakensis</i> P.S.Ashton	10	32.3	12.69	0	0	0	0	0	2	0	34	0	58	6
574	Fagaceae	<i>Lithocarpus nieuwenhuisii</i> Seem. A.Camus	10	32.2	20.52	19	19	0	0	0	0	0	0	5	42	15
692	Anacardiaceae	<i>Melanochyla elmeri</i> Merr.	10	32.1	15.72	7	0	0	0	3	0	0	1	5	50	35
263	Thymelaeaceae	<i>Aquilaria beccariana</i> Tiegh.	10	32	22.99	17	8	0	0	2	0	5	5	2	40	21
305	Burseraceae	<i>Dacryodes castata</i> A.W.Benn. H.J.Lam	10	32	12.95	14	0	0	0	5	0	0	0	1	55	25
716	Dipterocarpaceae	<i>Dipterocarpus caudiferus</i> Merr.	10	32	26.56	5	6	0	9	2	0	0	4	17	36	22
1385	Orchidaceae	<i>Cymbidium finlaysonianum</i> Lindl.	10	32	12.66	1	0	0	0	20	1	0	21	3	55	0
309	Burseraceae	<i>Dacryodes macrocarpa</i> King H.J.Lam var. <i>macrocarpa</i>	10	31.9	12.78	7	0	0	0	7	0	3	0	4	55	24
757	Dipterocarpaceae	<i>Hopea nervosa</i> King	10	31.9	13.94	0	37	0	0	0	10	1	1	3	45	2

Table S5.1. (continued).

sp#	Family	Species	Cluster Group	IndVal	Area (in %)	1	2	3	4	5	6	7	8	9	10	11
1109	Caesalpiniaceae	<i>Bauhinia finlaysoniana</i> Benth. Graham ex Baker var. <i>leptopus</i> Perkins K.Larsen & S.S.Larsen	10	31.9	14.64	32	0	0	0	0	0	0	14	0	54	0
15	Annonaceae	<i>Goniothalamus woodii</i> Salleh	10	31.7	10.03	6	0	0	0	0	0	0	1	22	61	11
508	Simaroubaceae	<i>Iringia malayana</i> Oliv.	10	31.6	9.54	0	0	0	0	11	0	0	0	8	62	19
1263	Moraceae	<i>Ficus delavayi</i> Corner	10	31.6	8.07	0	0	0	0	0	0	1	17	0	71	10
173	Euphorbiaceae	<i>Neoscortechinia angustifolia</i> Airy Shaw Welzen	10	31.5	12.02	7	0	0	0	0	0	0	0	21	55	16
1042	Sapindaceae	<i>Pometia pinnata</i> J.R.Forst. & G.Forst. f. <i>alnifolia</i> Blume M.Jacobs	10	31.5	21.17	17	0	0	0	0	2	4	0	19	41	16
1296	Moraceae	<i>Ficus recurva</i> Blume var. <i>ribesoides</i> Wall. King	10	31.5	20.33	12	0	0	0	0	4	0	22	6	44	12
74	Euphorbiaceae	<i>Antidesma neurocarpum</i> Miq. var. <i>hosei</i> Pax & K.Hoffm. Petra Hoffm.	10	31.4	27	25	13	5	0	1	3	0	9	3	36	5
219	Dilleniaceae	<i>Dillenia luzoniensis</i> Martelli	10	31.4	9.43	8	0	0	9	1	0	0	4	3	63	13
1041	Sapindaceae	<i>Paranephelium xestophyllum</i> Miq.	10	31.4	28.82	14	0	0	0	0	3	0	6	16	36	25
1201	Myristicaceae	<i>Horsfieldia ridleyana</i> King Warb.	10	31.2	13.01	0	20	0	4	8	6	7	0	7	48	1
1212	Myristicaceae	<i>Knema laurina</i> Blume Warb.	10	31.2	17.21	2	0	0	0	6	0	0	8	5	47	32
107	Euphorbiaceae	<i>Baccaurea polynura</i> Hook.f.	10	31.1	26.83	14	2	0	0	6	0	0	10	5	38	25
284	Xyridaceae	<i>Xyris complanata</i> R.Br.	10	31.1	6.53	0	0	0	1	0	0	1	1	10	76	11
314	Burseraceae	<i>Dacryodes rostrata</i> Blume H.J.Lam f. <i>rostrata</i>	10	31	29.74	4	2	0	7	10	0	0	12	13	34	17
1304	Moraceae	<i>Ficus sumatrana</i> Miq. Miq.	10	31	29.79	30	3	3	0	7	0	0	2	0	36	19
706	Labiatae	<i>Gomphostemma microcalyx</i> Prain.	10	30.9	9.86	14	0	0	0	0	24	0	0	0	61	0
1170	Loranthaceae	<i>Lepeosteges beccarii</i> King Gamble	10	30.9	24.03	22	3	0	0	1	0	0	0	5	40	28
115	Euphorbiaceae	<i>Cephalomappa beccariana</i> Baill. var. <i>hosei</i> Airy Shaw	10	30.7	17.34	0	1	0	0	14	1	2	21	5	46	10
433	Celastraceae	<i>Salacia chinensis</i> L.	10	30.7	25.53	2	5	0	19	8	1	1	6	13	35	11
541	Violaceae	<i>Rinorea horneri</i> Korth. Kuntze	10	30.7	18.93	21	23	0	0	0	0	0	0	5	42	9
250	Caesalpiniaceae	<i>Gnetum latifolium</i> Blume var. <i>latifolium</i>	10	30.6	22.01	2	2	0	17	14	0	0	3	17	37	7
1114	Caesalpiniaceae	<i>Bauhinia kockiana</i> Korth. var														

Table S5.1. (continued).

sp#	Family	Species	Cluster Group	IndVal	Area (in %)	1	2	3	4	5	6	7	8	9	10	11
939	Polygalaceae	<i>Xanthophyllum ellipticum</i> Korth. ex Miq.	10	29.6	28.75	7	9	0	1	24	3	0	3	13	32	7
1258	Moraceae	<i>Ficus binnendykii</i> Miq. Miq.	10	29.6	10.06	0	0	0	0	0	0	0	6	26	58	10
494	Loganiaceae	<i>Fagraea borneensis</i> Scheff.	10	29.5	24.2	25	4	0	0	7	0	1	0	2	38	24
808	Dipterocarpaceae	<i>Shorea macroptera</i> Dyer subsp. <i>sandakanensis</i> Symington P.S.Ashton	10	29.5	18.32	2	0	0	0	7	1	1	4	16	43	28
39	Annonaceae	<i>Polyalthia cauliflora</i> Hook.f. & Thomson var. <i>beccarii</i> Hook.f. & Thomson J.Sinclair	10	29.3	18.02	6	35	0	0	4	5	0	8	1	39	0
77	Euphorbiaceae	<i>Antidesma polystylum</i> Airy Shaw	10	29.3	6.91	0	4	0	0	0	4	0	5	10	71	7
279	Trigonaceae	<i>Trigonostrium hypoleucum</i> Miq.	10	29.3	32.05	16	5	0	7	7	1	1	9	10	32	13
566	Fagaceae	<i>Lithocarpus gracilis</i> Korth. Soepadmo	10	29.3	26.52	8	20	0	0	4	0	0	3	10	34	20
615	Taccaceae	<i>Tacca integrifolia</i> Ker Gawl.	10	29.3	25.17	9	15	1	0	0	18	0	2	11	35	9
238	Dilleniaceae	<i>Tetracera scandens</i> L. Merr.	10	29.2	34.21	2	4	0	0	0	5	2	21	21	31	13
525	Icacineae	<i>Stemonurus grandifolius</i> Becc.	10	29.2	26.85	17	10	0	0	8	0	2	0	8	35	21
625	Bignoniaceae	<i>Dolichandra spathacea</i> L.f. K.Schum.	10	29.2	7.74	0	0	0	0	1	0	0	1	21	66	11
932	Podocarpaceae	<i>Podocarpus polystachyus</i> R.Br.	10	29.1	13.65	0	0	0	4	5	1	1	13	25	49	2
248	Gnetaceae	<i>Gnetum gnemonoides</i> Brongn.	10	29	28.83	9	24	0	0	9	6	2	0	5	31	14
820	Dipterocarpaceae	<i>Shorea ovata</i> Dyer ex Brandis	10	29	9.64	0	7	0	0	18	2	0	0	16	56	0
1032	Sapindaceae	<i>Mischocarpus pentapetalus</i> Roxb. Radlk.	10	29	28.6	22	0	0	0	0	0	1	2	14	35	25
254	Gnetaceae	<i>Gnetum neglectum</i> Blume	10	28.9	30.79	11	0	0	10	0	0	1	10	11	33	24
321	Burseraceae	<i>Santiria laevigata</i> Blume f. <i>laevigata</i>	10	28.9	31.36	13	7	0	0	5	11	3	3	19	31	8
621	Hypericaceae	<i>Cratogeomys formosus</i> Jack Dyer	10	28.9	29.25	3	13	0	0	0	9	7	8	11	32	16
1231	Myristicaceae	<i>Myristica lowiana</i> King	10	28.7	14.7	0	0	0	0	44	2	0	2	4	45	2
35	Annonaceae	<i>Orophea sarawakensis</i> P.J.A.Kessler	10	28.6	8.85	1	6	0	0	0	0	0	0	14	61	18
385	Malpighiaceae	<i>Tristellateia australisae</i> A.Rich.	10	28.6	7.96	0	0	0	0	9	0	0	17	4	67	3
495	Loganiaceae	<i>Fagraea elliptica</i> Roxb.	10	28.6	21.18	19	7	2	0	20	5	2	2	1	39	3
1189	Myristicaceae	<i>Horsfieldia brachiata</i> King Warb.	10	28.5	30.43	28	8	1	0	0	2	0	6	3	34	18
134	Euphorbiaceae	<i>Macaranga conifera</i> Zoll. Müll.Arg.	10	28.4	31.39	5	0	0	0	6	1	1	12	15	32	29
320	Burseraceae	<i>Santiria laevigata</i> Blume f. <i>glabrifolia</i> Engl. H.J.Lam	10	28.4	32.2	9	6	0	4	16	2	4	1	17	30	12
545	Fagaceae	<i>Castanopsis borneensis</i> King	10	28.4	8.79	2	0	0	20	0	0	0	2	15	58	1
870	Araliaceae	<i>Arthropodium diversifolium</i> Blume	10	28.4	34.78	13	6	2	0	20	5	1	6	8	30	9
610	Cyperaceae	<i>Scleria sumatrensis</i> Retz.	10	28.3	13.66	0	0	0	3	0	2	0	0	36	47	12
20	Annonaceae	<i>Meiogyne virgata</i> Blume Miq.	10	28.2	29.91	17	0	0	0	1	0	0	5	18	33	26
323	Burseraceae	<i>Santiria mollis</i> Engl.	10	28.2	33.04	8	5	0	0	6	13	1	1	18	30	19
501	Loganiaceae	<i>Strychnos ignatii</i> P.J.Bergius	10	28.1	35.27	6	7	0	0	0	14	1	14	14	30	13
673	Anacardiaceae	<i>Buchanania arborescens</i> Blume Blume	10	28.1	27.41	8	0	0	0	17	0	0	5	17	34	20
904	Menispermaceae	<i>Fibraea tinctoria</i> Lour.	10	28.1	14.97	7	0	0	0	30	0	0	4	6	46	8
1035	Sapindaceae	<i>Nephelium cuspidatum</i> Blume var. <i>robustum</i> Radlk. Leenh.	10	28.1	10.87	17	0	0	0	0	0	0	2	0	57	23
1063	Meliaceae	<i>Aglaia oligophylla</i> Miq.	10	28	14.14	17	0	0	0	0	0	0	1	4	50	28
1216	Myristicaceae	<i>Knema membranifolia</i> H.J.P.Winkl.	10	28	21.92	3	14	0	0	0	14	5	5	2	37	20
241	Flagellariaceae	<i>Flagellaria indica</i> L.	10	27.8	27.26	2	2	0	13	15	0	0	5	24	32	7
620	Hypericaceae	<i>Cratogeomys cochinchinense</i> Lour. Blume	10	27.8	20.64	8	0	0	0	1	6	2	6	24	39	14
1280	Moraceae	<i>Ficus inaequipetiolata</i> Merr.	10	27.8	9.93	13	0	0	0	0	0	0	1	20	58	9
229	Dilleniaceae	<i>Saurauia horrida</i> Hook.f.	10	27.7	21.56	26	29	1	0	0	2	0	0	0	37	5
408	Rhizophoraceae	<i>Rhizophora apiculata</i> Blume	10	27.7	8.03	0	0	0	1	0	0	0	0	28	62	9
278	Thymelaeaceae	<i>Wikstroemia tenuiramis</i> Miq.	10	27.6	22.42	20	11	4	0	0	1	0	5	11	37	10
353	Flacourtiaceae	<i>Casearia rugulosa</i> Blume	10	27.6	27.41	20	10	0	0	0	0	0	12	8	34	17
377	Flacourtiaceae	<i>Ryparosa kostermansii</i> Sleumer	10	27.6	20.83	5	0	0	0	0	8	0	32	4	41	11
663	Ulmaceae	<i>Gironniera hirta</i> Ridl.	10	27.6	17.63	3	21	0	0	4	1	4	0	8	40	20
166	Euphorbiaceae	<i>Mallotus peltatus</i> (Geisel.) Müll.Arg.	10	27.5	33.74	7	11	0	11	8	3	0	5	10	29	16
661	Symplocaceae	<i>Symplocos tricoccata</i> Noot.	10	27.5	15.04	37	0	0	0	0	0	0	0	6	48	9
307	Burseraceae	<i>Dacryodes laxa</i> A.W.Benn. H.J.Lam	10	27.4	22.11	11	16	0	4	16	0	0	0	4	36	13
866	Dipterocarpaceae	<i>Vatica vinosa</i> P.S.Ashton	10	27.4	12.32	8	6	0	0	0	0	0	8	0	52	26
944	Polygalaceae	<i>Xanthophyllum macrophyllum</i> Baker	10	27.3	20.6	13	29	2	0	0	12	0	4	0	36	3
1262	Moraceae	<i>Ficus crassiramea</i> Miq.	10	27.3	26.24	0	4	0	9	2	3	11	7	19	32	14
897	Opiliaceae	<i>Champerea manillana</i> Blume Merr.	10	27.2	11.94	4	0	0	0	4	3	0	12	12	52	13
1025	Sapindaceae	<i>Harpullia arborea</i> Radlk.	10	27.2	20.42	19	0	0	0	0	2	0	1	8	40	29
1067	Meliaceae	<i>Aglaia silvestris</i> M.Roem. Merr.	10	27.2	34.6	12	7	0	0	1	1	0	6	23	29	21

Table S5.1. (continued).

sp#	Family	Species	Cluster Group	IndVal	Area (in %)	1	2	3	4	5	6	7	8	9	10	11	
1117	Caesalpiniaceae	<i>Bauhinia lambiana</i> Baker	10	27.2	6.21	0	1	0	0	0	0	0	2	0	2	73	22
1207	Myristicaceae	<i>Knema korthalsii</i> Warb. subsp. <i>rimosa</i> W.J.de Wilde	10	27.2	7.05	12	0	0	0	0	0	0	0	15	68	4	
81	Euphorbiaceae	<i>Antidesma venenosum</i> J.J.Sm.	10	27.1	36.69	22	12	6	0	7	5	0	8	1	29	11	
534	Oxalidaceae	<i>Sarcotheca diversifolia</i> Miq. Hallier f.	10	27.1	35.37	10	7	0	0	0	10	3	5	10	29	26	
616	Taccaceae	<i>Tacca palmata</i> Blume	10	27.1	18.42	4	0	1	23	0	4	3	7	15	39	5	
1001	Rosaceae	<i>Prunus grisea</i> C. Muell. Kalkman var. <i>tomentosa</i> Koord. & Veleton Kalkman	10	27.1	13.5	10	31	0	0	0	1	0	10	0	46	2	
1094	Meliaceae	<i>Pseudoclausena chrysogyne</i> Miq. T.Clark	10	27.1	23.13	7	0	0	3	7	0	0	4	21	36	22	
7	Annonaceae	<i>Cyathostemma excelsum</i> Hook.f. & Thomson J.Sinclair	10	27	27.05	9	12	0	2	0	0	1	6	8	33	27	
236	Dilleniaceae	<i>Tetracera akara</i> Burm.f. Merr.	10	27	29.7	19	8	0	0	0	0	1	7	2	33	31	
342	Dichapetalaceae	<i>Dichapetalum gelonioides</i> Roxb. Engl. subsp. <i>pilosum</i> Leenh.	10	27	16.92	23	0	0	4	0	0	0	1	45	27		
479	Ericaceae	<i>Vaccinium bancanum</i> Miq. var. <i>bancanum</i>	10	27	36.5	22	19	3	9	2	3	1	0	6	27	7	
1023	Sapindaceae	<i>Guioa pterorhachis</i> Welzen	10	27	5.47	6	0	0	0	0	0	8	4	3	78	2	
1232	Myristicaceae	<i>Myristica papyracea</i> J.Sinclair	10	27	23.48	0	0	0	0	0	4	3	6	15	36	35	
549	Fagaceae	<i>Castanopsis foxworthyi</i> Schottky	10	26.9	20.54	23	12	0	0	13	0	1	0	8	38	5	
687	Anacardiaceae	<i>Mangifera decandra</i> Ding Hou	10	26.9	14.27	0	3	0	0	0	0	18	0	10	45	24	
180	Euphorbiaceae	<i>Pimelodendron zanthogyne</i> J.J.Sm.	10	26.8	18.57	1	36	0	0	0	5	0	5	0	37	14	
1250	Moraceae	<i>Artocarpus rigidus</i> Blume subsp. <i>rigidus</i>	10	26.8	19.4	11	0	0	3	8	0	0	2	12	40	24	
681	Anacardiaceae	<i>Gluta oba</i> Merr. Ding Hou	10	26.7	9.86	0	1	0	3	4	7	1	3	21	54	5	
205	Convolvulaceae	<i>Erycibe borneensis</i> Merr. Hoogland var. <i>borneensis</i>	10	26.6	6.37	9	0	0	0	0	0	0	2	7	72	10	
316	Burseraceae	<i>Dacryodes rugosa</i> Blume H.J.Lam var. <i>rugosa</i>	10	26.6	28.38	10	30	0	0	0	2	1	2	7	30	18	
742	Dipterocarpaceae	<i>Dryobalanops lanceolata</i> Burck	10														

Table S5.1. (continued).

sp#	Family	Species	Cluster Group	IndVal	Area (in %)	1	2	3	4	5	6	7	8	9	10	11
603	Cyperaceae	<i>Paramapania radians</i> C.B.Clarke Uittien	10	25.6	23.25	4	25	0	0	0	27	2	2	3	32	5
858	Dipterocarpaceae	<i>Vatica oblongifolia</i> Hook.f. subsp. <i>multinervosa</i>	10	25.6	12.85	0	15	0	0	0	5	4	0	4	46	25
875	Araliaceae	<i>Schefflera elliptica</i> Blume Harms	10	25.6	23.62	26	0	3	5	12	0	0	1	8	35	9
1053	Meliaceae	<i>Aglaia korthalsii</i> Miq.	10	25.6	21.29	26	0	0	0	0	0	0	4	2	39	29
1143	Caesalpinaceae	<i>Peltophorum racemosum</i> Merr.	10	25.6	13.51	0	0	0	0	0	2	0	32	2	49	14
535	Oxalidaceae	<i>Sarcotheca glauca</i> Hallier	10	25.5	20.64	1	1	0	10	30	0	0	0	22	34	2
539	Violaceae	<i>Rinorea anguifera</i> Lour. Kuntze	10	25.5	33.29	6	20	0	6	8	16	2	9	4	27	2
1200	Myristicaceae	<i>Horsfieldia polyspherula</i> Hook.f. emend. King J.Sinclair var. <i>sumatrana</i> Miq. W.J.de Wilde	10	25.5	34.64	12	22	0	0	0	1	2	8	16	27	12
1247	Moraceae	<i>Artocarpus nitidus</i> Trécul	10	25.5	32.44	14	4	0	0	3	2	3	5	21	29	18
1315	Moraceae	<i>Prainea limpato</i> Miq. Beumée ex K.Heyne subsp. <i>limpato</i>	10	25.5	20.61	2	3	0	0	0	0	11	2	18	36	28
64	Annonaceae	<i>Woodiellantha sympetala</i> Merr. S.Rauschert	10	25.4	11.1	18	0	0	0	0	0	0	2	0	54	25
697	Anacardiaceae	<i>Pentaspadon motleyi</i> Hook.f.	10	25.4	34.43	3	19	0	5	6	3	3	8	11	27	16
1051	Meliaceae	<i>Aglaia forbesii</i> King	10	25.4	21.71	11	6	1	1	0	16	4	3	11	35	10
1255	Moraceae	<i>Ficus annulata</i> Blume	10	25.4	41.75	8	12	0	1	0	3	1	14	18	26	17
1078	Meliaceae	<i>Chisocheton pentandrus</i> Blanco Merr. subsp. <i>medius</i> Mabb.	10	25.3	22.58	22	0	0	0	0	0	0	6	9	37	26
1123	Caesalpinaceae	<i>Caesalpinia crista</i> L.	10	25.3	11.88	0	0	0	6	15	0	0	3	21	48	8
206	Convolvulaceae	<i>Erycibe glomerata</i> Blume subsp. <i>angustifolia</i> Hallier f. Hoogland	10	25.2	8.22	18	0	0	0	0	0	1	0	0	62	18
903	Menispermaceae	<i>Diploclisia kunstleri</i> King Diels	10	25.2	16.15	18	24	0	0	0	4	0	0	7	40	6
1047	Meliaceae	<i>Aglaia aspera</i> Teijsm. & Binn.	10	25.2	13.84	0	35	0	0	0	4	3	11	6	41	0
1103	Meliaceae	<i>Walsura villamilii</i> Merr.	10	25.2	4.19	0	0	0	0	0	0	0	0	0	87	13
1259	Moraceae	<i>Ficus borneensis</i> Kochummen	10	25.2	26.73	18	3	5	0	19	14	0	3	5	32	0
257	Sonneratiaceae	<i>Duabanga moluccana</i> Blume	10	25.1	39.78	16	12	0	0	3	8	1	4	9	26	20
1281	Moraceae	<i>Ficus lepicarpa</i> Blume	10	25.1	30.5	12	22	3	0	0	10	7	2	6	28	9
88	Euphorbiaceae	<i>Aporosa frutescens</i> Blume	10	25	25.56	20	0	0	2	0	0	0	13	8	35	23
862	Dipterocarpaceae	<i>Vatica sarawakensis</i> Heim	10	25	38.59	14	18	0	5	11	1	0	5	7	26	14
1209	Myristicaceae	<i>Knema latericia</i> Elmer subsp. <i>albifolia</i> Sinclair W.J.de Wilde	10	25	24.1	4	25	0	0	0	0	2	3	7	32	26
397	Rhizophoraceae	<i>Bruguiera parviflora</i> Wight & Arn.	10	24.9	11.71	1	0	0	15	2	3	0	3	30	46	0
984	Mimosaceae	<i>Archidendron clypearia</i> Jack I.C.Nielsen	10	24.9	40.41	11	3	4	1	0	11	6	8	19	25	11
991	Mimosaceae	<i>Archidendron microcarpum</i> Benth. I.C.Nielsen	10	24.9	19.8	7	0	0	0	0	0	0	7	15	39	32
1142	Caesalpinaceae	<i>Peltophorum pterocarpum</i> DC. Backer ex K.Heyne	10	24.9	10.28	0	0	0	3	8	0	0	3	31	51	5
190	Burmanniaceae	<i>Burmannia coelestis</i> D.Don	10	24.8	17.51	0	1	0	5	8	4	4	2	35	37	3
530	Ochnaceae	<i>Gomphia serrata</i> Gaertn. Kanis	10	24.8	35.28	15	20	0	0	11	1	1	3	8	27	13
1	Annonaceae	<i>Alphonsea javanica</i> Scheff.	10	24.7	11.81	6	0	0	0	0	0	0	0	5	50	39
290	Burseraceae	<i>Canarium denticulatum</i> Blume f. <i>fissistipulum</i> Miq. Leenh.	10	24.7	33.78	16	14	0	0	0	8	2	4	24	27	6
351	Flacourtiaceae	<i>Casearia grewiaefolia</i> Vent. var. <i>gelonioides</i>	10	24.7	16.66	29	2	0	0	0	0	1	0	2	43	22
851	Dipterocarpaceae	<i>Vatica havilandii</i> Brandis	10	24.7	15.55	0	9	0	0	11	5	0	19	13	42	2
249	Gnetaceae	<i>Gnetum klossii</i> Merr. ex Markgr.	10	24.6	28.7	6	17	1	0	0	25	4	8	9	29	2
295	Burseraceae	<i>Canarium littorale</i> Blume f. <i>littorale</i>	10	24.6	26.02	22	1	0	0	0	4	9	9	34	21	
329	Connaraceae	<i>Agelaea borneensis</i> Hook.f. Merr.	10	24.6	37.95	9	13	0	2	6	4	5	1	12	26	23
1210	Myristicaceae	<i>Knema latericia</i> Elmer subsp. <i>ridleyi</i> Gand. W.J.de Wilde f. <i>olivacea</i> W.J.de Wilde	10	24.6	29.47	28	0	1	0	2	0	1	7	6	32	22
328	Burseraceae	<i>Triamnia malaccensis</i> Hook.f.	10	24.5	16.1	5	0	0	0	0	0	0	0	14	42	39
806	Dipterocarpaceae	<i>Shorea leprosa</i> Miq.	10	24.5	41.9	6	8	0	7	0	7	2	9	19	25	19
29	Annonaceae	<i>Neo-uvaria acuminatissima</i> Miq. Airy Shaw	10	24.4	31.56	14	2	0	0	7	1	10	4	6	30	26
160	Euphorbiaceae	<i>Mallotus lackeyi</i> Elmer	10	24.4	17.02	15	0	0	0	0	0	0	1	10	42	32
612	Vitaceae	<i>Leea aculeata</i> Blume ex Spreng.	10	24.4	36.38	15	11	0	0	0	1	1	12	9	28	22
859	Dipterocarpaceae	<i>Vatica oblongifolia</i> Hook.f. subsp. <i>oblongifolia</i>	10	24.4	23.56	3	8	0	7	0	1	18	3	11	32	19
271	Thymelaeaceae	<i>Gonystylus micranthus</i> Airy Shaw	10	24.3	16.21	0	1	0	0	28	1	0	17	9	41	3
561	Fagaceae	<i>Lithocarpus conocarpus</i> Oudem. Rehder	10	24.2	37.81	20	14	2	0	0	6	3	3	10	26	14

Table S5.1. (continued).

sp#	Family	Species	Cluster Group	IndVal	Area (in %)	1	2	3	4	5	6	7	8	9	10	11
774	Dipterocarpaceae	<i>Shorea atrinervosa</i> Symington	10	24.2	39.16	9	10	0	8	11	3	1	1	17	25	15
1033	Sapindaceae	<i>Mischocarpus sundaicus</i> Blume	10	24.2	29.46	19	0	2	0	0	8	6	4	11	31	19
404	Rhizophoraceae	<i>Gynotroches axillaris</i> Blume	10	24.1	35.89	18	14	3	4	4	4	4	4	14	26	5
1122	Caesalpinaceae	<i>Caesalpinia bonduc</i> L. Roxb.	10	24.1	7.73	0	0	0	2	2	0	0	1	19	60	16
675	Anacardiaceae	<i>Buchanania sessilifolia</i> Blume	10	24	40.84	18	14	1	1	0	1	1	9	7	26	22
1257	Moraceae	<i>Ficus aurita</i> Reinw. ex Blume	10	24	23.39	22	0	3	0	0	2	0	17	15	35	4
94	Euphorbiaceae	<i>Aporosa nitida</i> Merr.	10	23.9	38.94	8	15	0	2	1	6	5	7	8	25	22
266	Thymelaeaceae	<i>Gonystylus affinis</i> Radlk.	10	23.9	18.53	0	10	0	7	9	2	3	0	21	35	13
292	Burseraceae	<i>Canarium dichotomum</i> Blume Miq.	10	23.9	31.33	15	12	2	0	0	2	9	2	5	29	25
298	Burseraceae	<i>Canarium littorale</i> Blume f. <i>tomentosum</i> Blume Leenh.	10	23.9	30.48	13	21	0	0	5	0	2	6	6	29	18
300	Burseraceae	<i>Canarium merrillii</i> H.J.Lam	10	23.9	13.47	29	0	10	1	3	2	0	0	10	45	0
712	Dipterocarpaceae	<i>Dipterocarpus acutangulus</i> Vesque	10	23.9	40.26	12	17	0	9	1	3	3	3	11	24	16
1253	Moraceae	<i>Ficus adenasperma</i> Miq.	10	23.9	16.65	7	15	0	0	11	0	0	8	1	40	18
37	Annonaceae	<i>Phaeanthus splendens</i> Miq.	10	23.8	27.29	1	1	0	1	16	2	14	4	10	30	20
49	Annonaceae	<i>Polyalthia motleyana</i> Hook.f. Airy Shaw	10	23.8	18.74	15	22	0	0	4	0	0	6	11	36	5
1013	Sapindaceae	<i>Allophylus cobbe</i> L. Raeusch.	10	23.8	30.69	20	7	0	1	0	0	0	11	9	30	21
368	Flacourtiaceae	<i>Hydnocarpus sumatrana</i> Miq. Koord.	10	23.7	28.12	11	2	1	0	0	18	1	4	22	30	11
935	Polygalaceae	<i>Polygala venenosa</i> Juss.	10	23.7	23.98	20	4	11	0	0	29	0	4	0	33	0
945	Polygalaceae	<i>Xanthophyllum neglectum</i> Meijden	10	23.7	22.68	2	0	0	0	0	0	1	31	21	35	9
1072	Meliaceae	<i>Aphanamixis borneensis</i> Harms	10	23.7	35.04	17	18	1	1	6	0	0	11	8	27	12
1190	Myristicaceae	<i>Horsfieldia carnosa</i> Warb.	10	23.7	7.86	0	0	0	0	42	0	0	1	0	57	0
150	Euphorbiaceae	<i>Macaranga tanarius</i> L. Müll.Arg.	10	23.6	17.1	10	0	0	0	0	0	1	5	4	41	38
839	Dipterocarpaceae	<i>Shorea smithiana</i> Symington	10	23.6	12.99	1	0	0	0	2	0	0	9	8	47	33
5	Annonaceae	<i>Cyathocalyx magnifica</i> Diels	10	23.5	34.6	15	11	6	0	2	6	4	9	6	27	14
159	Euphorbiaceae	<i>Mallotus korthalsii</i> Müll.Arg.	10	23.5	32.28	8	10	0	3	0	13	8	5	11	27	15
172	Euphorbiaceae	<i>Moultonianthus leembruggianus</i> Boerl. & Koord. Steenis	10	23.5	25.37	2	24	1	0	0	5	13	3	10	29	14
365	Flacourtiaceae	<i>Hydnocarpus elmeri</i> Merr.	10	23.5	13.02	2	5	0	0	0						

Table S5.1. (continued).

sp#	Family	Species	Cluster Group	IndVal	Area (in %)	1	2	3	4	5	6	7	8	9	10	11
57	Annonaceae	<i>Pseuduvaria borneensis</i> Y.C.F.Su & R.M.K.Saunders	10	22.6	27.35	17	5	0	0	0	0	4	10	6	31	26
196	Combretaceae	<i>Combretum nigrescens</i> King	10	22.6	8.29	10	0	0	0	0	0	0	0	10	58	22
200	Combretaceae	<i>Terminalia catappa</i> L.	10	22.6	12.2	0	0	0	2	16	0	0	9	24	45	5
302	Burseraceae	<i>Canarium odontophyllum</i> Miq. f. <i>odontophyllum</i>	10	22.6	28.27	24	3	1	0	7	0	1	10	0	31	23
812	Dipterocarpaceae	<i>Shorea multiflora</i> Burck Symington	10	22.6	39.15	4	23	1	1	8	10	5	11	7	23	8
1249	Moraceae	<i>Artocarpus rigidus</i> Blume	10	22.6	26.86	12	3	0	0	0	6	2	13	6	32	25
1273	Moraceae	<i>Ficus glandulifera</i> Wall. ex Miq. King	10	22.6	24.22	22	5	4	0	2	6	0	14	32	15	
173	Annonaceae	<i>Maasia hypoleuca</i> Hook.f. & Thomson. Mols. P.J.A.KeBler & S.H.Rogstad	10	22.5	17.44	0	19	0	0	2	12	3	7	19	35	2
114	Euphorbiaceae	<i>Bridelia stipularis</i> L. Blume	10	22.5	7.05	15	0	0	0	0	0	0	9	63	13	
227	Dilleniaceae	<i>Saurauia ferax</i> Korth.	10	22.4	20.89	14	29	3	0	0	17	0	2	2	32	2
679	Anacardiaceae	<i>Gluta beccarii</i> Engl. Ding Hou	10	22.4	8.97	0	12	0	0	23	0	0	1	13	50	0
975	Mimosaceae	<i>Acacia pseudointsia</i> Miq.	10	22.4	9.29	12	0	0	0	0	0	1	0	55	32	
1054	Meliaceae	<i>Aglaia lawii</i> Wight C.J.Saldanha	10	22.4	37.6	12	16	2	0	7	10	0	2	12	24	15
602	Cyperaceae	<i>Mapania latifolia</i> Uittien	10	22.3	15.1	44	0	0	0	0	0	6	0	44	5	
1235	Nepenthaceae	<i>Nepenthes gracilis</i> Korth.	10	22.2	34.1	6	2	0	3	19	7	1	6	22	26	10
1312	Moraceae	<i>Ficus xylophylla</i> Wall. ex Miq. Miq.	10	22.2	13.26	3	6	0	2	32	0	0	1	5	42	9
684	Anacardiaceae	<i>Gluta wallichii</i> Hook.f. Ding Hou	10	22.1	34.06	9	5	0	0	16	1	2	5	15	26	19
1058	Meliaceae	<i>Aglaia luzoniensis</i> Vidal Merr. & Rolfe	10	22.1	9.85	33	0	0	0	0	0	10	0	55	3	
215	Dilleniaceae	<i>Dillenia beccariana</i> Martelli	10	22	25.28	1	17	0	0	1	16	1	22	8	30	4
952	Polygalaceae	<i>Xanthophyllum reticulatum</i> Chodat	10	22	11.24	18	0	0	0	0	1	2	0	50	29	
1087	Meliaceae	<i>Dysoxylum cyrtobotryum</i> Miq.	10	22	46.95	15	4	3	0	5	14	2	8	8	23	18
1135	Caesalpiniaceae	<i>Cynometra ramiflora</i> L.	10	22	14.07	0	0	0	0	18	0	0	1	36	40	5
1196	Myristicaceae	<i>Horsfieldia laticostata</i> J.Sinclair W.J.de Wilde	10	22	31.58	0	11	0	14	12	9	6	5	14	25	3
717	Dipterocarpaceae	<i>Dipterocarpus confertus</i> Slooten	10	21.9	18.99	5	0	0	0	3	4	1	21	36	30	
1305	Moraceae	<i>Ficus sundaica</i> Blume	10	21.9	43.57	10	4	1	0	18	6	5	10	17	23	6
129	Euphorbiaceae	<i>Macaranga auriculata</i> Merr. Airy Shaw	10	21.8	29.16	20	3	1	0	0	4	18	2	30	20	
555	Fagaceae	<i>Castanopsis psilophylla</i> Soepadmo	10	21.8	11.55	34	0	0	0	0	0	0	4	49	12	
1057	Meliaceae	<i>Aglaia leucophylla</i> King	10	21.8	26.64	12	25	0	0	0	2	0	17	5	30	10
1307	Moraceae	<i>Ficus tinctoria</i> G.Forst. subsp. <i>gibbosa</i> Blume Corner	10	21.8	29.56	19	26	3	0	0	12	0	5	1	27	5
34	Annonaceae	<i>Orophea myriantha</i> Merr.	10	21.7	14.48	14	0	0	0	0	0	0	18	8	44	17
203	Combretaceae	<i>Terminalia phellocarpa</i> King	10	21.7	14.19	0	27	0	0	0	8	0	9	13	38	4
252	Gnetaceae	<i>Gnetum leptostachyum</i> Blume	10	21.7	32.09	13	18	2	0	0	23	0	9	0	27	7
301	Burseraceae	<i>Canarium odontophyllum</i> Miq. f. <i>multifidum</i> H.J.Lam Leenh.	10	21.7	6.62	1	0	0	0	0	0	0	1	64	34	
799	Dipterocarpaceae	<i>Shorea hypoleuca</i> Meijer	10	21.7	3.73	11	0	0	0	0	0	0	1	86	2	
1181	Loranthaceae	<i>Scurrula ferruginea</i> Jack Danser	10	21.7	25.67	7	1	0	0	22	7	0	4	20	30	9
71	Euphorbiaceae	<i>Antidesma montanum</i> Blume	10	21.6	46.55	13	11	0	4	15	5	1	6	12	22	12
246	Gnetaceae	<i>Gnetum gnemon</i> L. var. <i>brunonianum</i> Griff. Markgr.	10	21.6	12.16	0	22	0	0	0	23	4	2	8	41	0
332	Connaraceae	<i>Connarus euphlebius</i> Merr. var. <i>euphlebius</i>	10	21.6	20.83	5	0	0	0	0	0	7	2	33	33	19
378	Flacourtiaceae	<i>Ryparosa kunstleri</i> King	10	21.6	16.32	0	0	0	0	0	2	1	24	25	39	10
736	Dipterocarpaceae	<i>Dipterocarpus validus</i> Blume	10	21.6	15.38	5	0	0	0	6	0	0	1	12	40	35
865	Dipterocarpaceae	<i>Vatica umbonata</i> Hook.f. Burck	10	21.6	43.79	15	11	0	2	3	2	3	5	14	23	22
6	Annonaceae	<i>Cyathocalyx ramuliflorus</i> Maingay ex Hook.f. & Thomson Scheff.	10	21.5	4.91	0	0	0	0	0	4	3	11	0	74	7
214	Dactyloctenaceae	<i>Octomeles sumatrana</i> Miq.	10	21.5	31.39	0	11	0	0	8	3	4	9	25	26	14
1030	Sapindaceae	<i>Lepisanthes rubiginosa</i> Roxb. Leenh.	10	21.5	8.53	1	0	0	0	3	0	0	14	6	56	20
162	Euphorbiaceae	<i>Mallotus minimifolius</i> S.E.C. Sierra	10	21.4	30.28	19	21	0	0	0	2	5	8	3	28	15
700	Anacardiaceae	<i>Semecarpus cuneiformis</i> Blanco	10	21.4	16.86	14	0	0	0	6	0	0	2	1	40	38
1065	Meliaceae	<i>Aglaia rivularis</i> Merr.	10	21.3	13.58	22	0	0	0	0	0	1	0	6	44	26
1176	Loranthaceae	<i>Macrosolen cochinchinensis</i> Lour. Tiegh.	10	21.3	41.34	11	11	1	0	20	6	1	2	17	23	9
8	Annonaceae	<i>Cyathostemma hookeri</i> King	10	21.2	8.79	0	0	0	0	0	2	0	38	0	56	4
324	Burseraceae	<i>Santiria oblongifolia</i> Blume	10	21.2	34.86	5	16	0	1	6	0	6	1	18	24	24
1237	Nepenthaceae	<i>Nepenthes rafflesiana</i> Jack	10	21.2	37.89	3	7	0	16	18	5	4	2	16	23	7
503	Loganiaceae	<i>Strychnos villosa</i> A.W.Hill	10	21.1	10	1	0	0	0	0	0	0	0	20	49	29
1202	Myristicaceae	<i>Horsfieldia splendida</i> W.J.de Wilde	10	21.1	26.29	7	17	0	7	14	9	1	1	10	27	6
744	Dipterocarpaceae	<i>Dryobalanops rappa</i> Becc.	10	21	13.38	0	0	0	27	14	1	1	1	16	38	2

Table S5.1. (continued).

sp#	Family	Species	Cluster Group	IndVal	Area (in %)	1	2	3	4	5	6	7	8	9	10	11	
883	Liliaceae	<i>Peliasanthes tetra</i> Andrews	10	21	4.01	0	0	0	0	0	0	2	0	0	16	79	3
1153	Boraginaceae	<i>Pteleocarpa lamponga</i> Miq. Bakh.	10	21	13.8	15	0	0	0	0	0	0	0	18	42	24	
244	Gnetaceae	<i>Gnetum cuspidatum</i> Blume	10	20.9	44.82	11	21	6	1	5	10	0	11	9	21	5	
864	Dipterocarpaceae	<i>Vatica umbonata</i> Hook.f. Burck subsp. <i>umbonata</i>	10	20.9	27.48	12	22	0	1	8	0	2	12	2	28	12	
1220	Myristicaceae	<i>Knema pedicellata</i> W.J.de Wilde	10	20.9	10.42	0	3	0	31	3	5	0	3	10	44	1	
1244	Moraceae	<i>Artocarpus glaucus</i> Blume	10	20.9	17.8	2	0	0	0	3	0	11	8	11	36	30	
11	Annonaceae	<i>Goniothalamus roseus</i> Stapf	10	20.8	9.85	41	0	0	0	0	0	0	0	0	53	7	
340	Connaraceae	<i>Rourea minor</i> Gaertn. Leenh.	10	20.8	47.6	11	19	0	5	3	12	2	9	8	21	11	
1102	Meliaceae	<i>Walsura pinnata</i> Hassk.	10	20.8	24.66	10	1	0	0	0	4	4	16	16	31	18	
175	Euphorbiaceae	<i>Neoscortechinia philippinensis</i> Merr. Welzen	10	20.7	40.03	13	17	0	0	0	0	4	2	9	15	23	
198	Combretaceae	<i>Lumnitzera littorea</i> Jack Voigt	10	20.7	5.18	0	0	0	0	0	0	0	4	21	68	7	
327	Burseraceae	<i>Santiria tomentosa</i> Blume	10	20.7	43.34	5	18	1	0	5	12	8	4	12	21	13	
643	Symplocaceae	<i>Symplocos crassipes</i> C.B.Clarke var. <i>ernae</i> Brand Noot.	10	20.7	36.49	19	6	11	0	0	6	11	8	3	25	12	
723	Dipterocarpaceae	<i>Dipterocarpus globosus</i> Vesque	10	20.7	3.24	0	6	0	0	1	0	3	2	1	88	1	
802	Dipterocarpaceae	<i>Shorea johorensis</i> Foxw.	10	20.7	25.45	7	0	0	0	2	0	0	12	19	31	29	
1288	Moraceae	<i>Ficus midotis</i> Corner	10	20.7	31.64	19	12	5	0	0	4	0	10	12	27	12	
142	Euphorbiaceae	<i>Macaranga lowii</i> King ex Hook.f.	10	20.6	26.42	8	0	0	0	3	1	1	12	15	30	30	
914	Linaceae	<i>Ctenolophon parvifolius</i> Oliv.	10	20.6	32.97	8	5	0	3	24	7	1	2	18	25	8	
1018	Sapindaceae	<i>Dimocarpus longan</i> Lour. subsp. <i>malesianus</i> Leenh.	10	20.6	47.07	8	19	0	4	0	3	5	12	8	21	20	
526	Ilaciniaceae	<i>Stemonurus malaccensis</i> Mast. Sleumer	10	20.5	48.44	15	10	1	11	3	3	5	7	10	21	13	
665	Ulmaceae	<i>Gironniera parvifolia</i> Planch.	10	20.5	12.11	42	0	4	0	0	0	3	0	0	47	4	
993	Mimosaceae	<i>Leucaena leucocephala</i> Lam. de Wit	10	20.5	14.17	15	0	0	0	0	0	1	0				









Table S5.1. (continued).

sp#	Family	Species	Cluster Group	IndVal	Area (in %)	1	2	3	4	5	6	7	8	9	10	11
1069	Meliaceae	<i>Aglia spectabilis</i> Miq. S.S.Jain & Bennet	11	14.2	15.76	2	0	0	9	0	0	4	1	24	29	31
265	Thymelaeaceae	<i>Enkleia malaccensis</i> Griff.	11	14.1	8.91	7	0	0	0	0	1	1	3	22	24	42
696	Anacardiaceae	<i>Pegia sarmentosa</i> Leconte Hand-Mazz.	11	14.1	12.46	27	0	0	0	0	1	9	0	5	22	37
184	Euphorbiaceae	<i>Spathostemon javensis</i> Blume	11	13.9	21.42	15	0	0	0	6	0	2	7	20	22	27
917	Magnoliaceae	<i>Magnolia dolichogyna</i> Dandy ex Noot. Figlar & Noot.	11	13.6	12.18	35	0	0	0	0	0	0	11	0	15	38
943	Polygalaceae	<i>Xanthophyllum impressum</i> Meijden	11	13.6	8.24	24	0	0	0	0	0	0	1	2	28	45
1199	Myristicaceae	<i>Horsfieldia polyspherula</i> Hook.f. emend. King J.Sinclair	11	13.4	4.96	2	0	0	0	4	0	9	1	7	22	55
830	Dipterocarpaceae	<i>Shorea retusa</i> Meijer	11	13.3	9.25	0	1	0	0	0	0	14	6	16	22	39
1026	Sapindaceae	<i>Lepisanthes amoena</i> Hassk. Leenh.	11	12.7	49.89	3	11	1	0	3	13	10	12	16	15	16
1251	Moraceae	<i>Artocarpus teysmannii</i> Miq.	11	12.4	17.84	0	0	0	1	25	1	10	5	24	9	26
1028	Sapindaceae	<i>Lepisanthes kinabaluensis</i> Leenh.	11	12.1	13.3	29	0	1	0	9	0	4	10	0	14	33
852	Dipterocarpaceae	<i>Vatica javanica</i> Slooten subsp. <i>scaphifolia</i> Kosterm. P.S.Ashton	11	11.6	7.71	0	0	0	0	29	0	0	1	33	0	38
344	Dichapetalaceae	<i>Dichapetalum gelonioides</i> Roxb. Engl. subsp. <i>tuberculatum</i> Leenh.	11	11	20.43	23	0	1	0	0	0	2	11	19	19	25
390	Proteaceae	<i>Helicia maxwelliana</i> Gibbs	11	10.4	11.59	32	0	1	0	0	0	0	7	8	18	33
886	Liliaceae	<i>Smilax corbularia</i> Kunth var. <i>woodii</i> Merr. T.Koyama	11	10	7.04	37	0	0	0	0	0	0	1	0	19	43
538	Oxalidaceae	<i>Sarcotheca rubrinervis</i> Hallier f.	11	9.8	3.68	8	0	0	0	8	0	0	2	0	26	57
567	Fagaceae	<i>Lithocarpus grandifolius</i> D.Don S.N.Biswas	11	9.7	11.87	15	0	0	0	0	0	0	4	28	23	30
552	Fagaceae	<i>Castanopsis megacarpa</i> Gamble	11	9.5	10.26	26	0	3	0	0	5	2	1	0	30	34
1105	Caesalpiniaceae	<i>Afzelia rhomboidea</i> Blanco Vidal	11	8.8	7.18	21	0	0	0	0	0	0	2	0	37	40
542	Violaceae	<i>Rinorea lanceolata</i> Wall. Kuntze	11	8.5	13.47	21	0	0	0	17	0	0	9	0	25	28
662	Ulmaceae	<i>Celtis philippensis</i> Blanco	11	8.4	7.5	8	0	0	0	0	0	0	18	0	36	38
225	Dilleniaceae	<i>Saurauia agamae</i> Merr.	11	6.2	9.46	24	0	0	0	0	0	0	11	12	24	29
795	Dipterocarpaceae	<i>Shorea gratissima</i> Wall. ex Kurz Dyer	11	6.2	3.22	1	0	0	0	0	0	0	1	8	42	48
193	Caprifoliaceae	<i>Viburnum amplificatum</i> Kern	11	5.1	2.67	17	0	0	0	0	0	0	0	0	34	49
670	Anacardiaceae	<i>Anacardium occidentale</i> L.	11	3.3	1.91	0	0	0	0	18	0	0	0	10	28	44