



Universiteit
Leiden
The Netherlands

The epiphyseal growth plate and peripheral cartilaginous tumours : the neighbours matter

Andrea, C.E. de

Citation

Andrea, C. E. de. (2012, May 30). *The epiphyseal growth plate and peripheral cartilaginous tumours : the neighbours matter*. Retrieved from <https://hdl.handle.net/1887/19035>

Version: Corrected Publisher's Version

License: [Licence agreement concerning inclusion of doctoral thesis in the Institutional Repository of the University of Leiden](#)

Downloaded from: <https://hdl.handle.net/1887/19035>

Note: To cite this publication please use the final published version (if applicable).

Cover Page



Universiteit Leiden



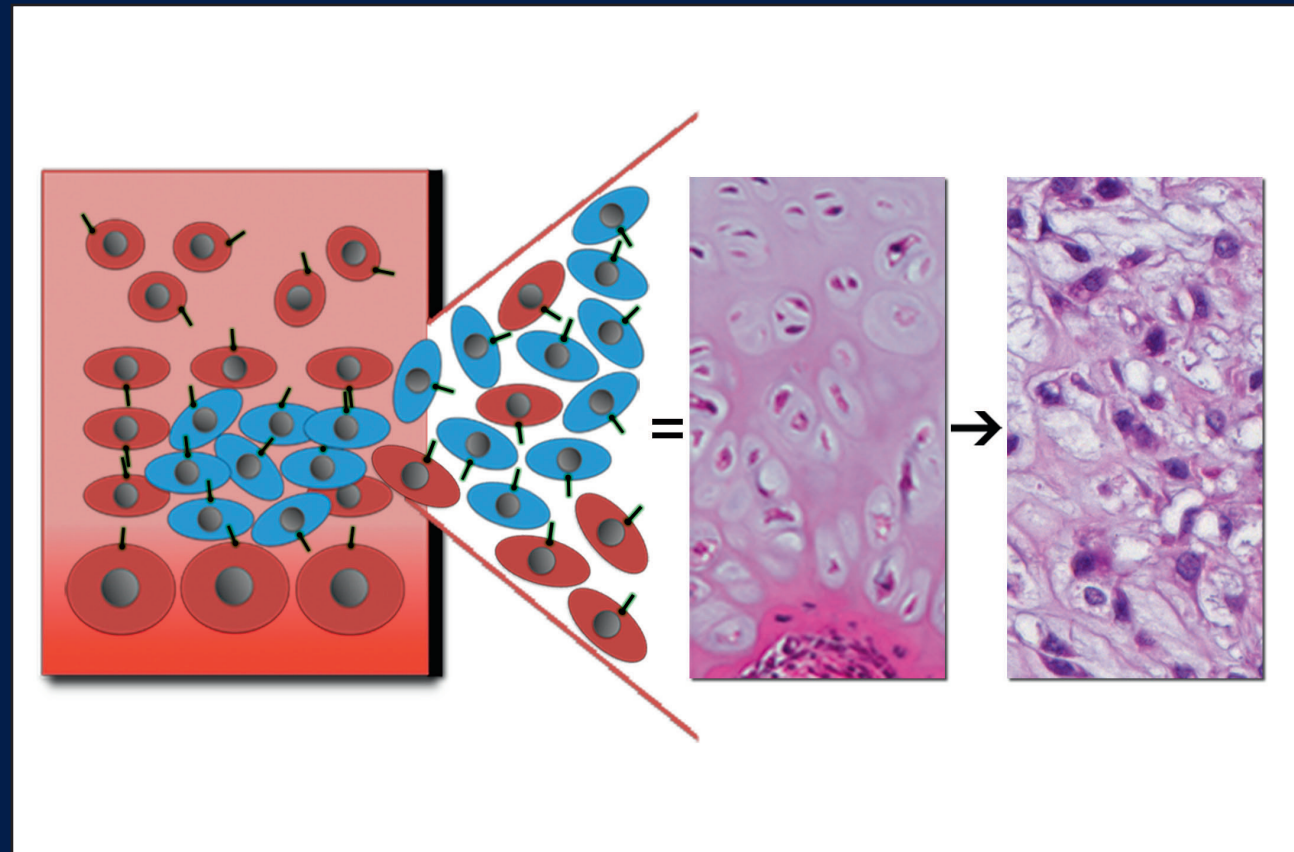
The handle <http://hdl.handle.net/1887/19035> holds various files of this Leiden University dissertation.

Author: Andrea, Carlos Eduardo de

Title: The epiphyseal growth plate and peripheral cartilaginous tumours : the neighbours matter

Issue Date: 2012-05-30

The Epiphyseal Growth Plate and Peripheral Cartilaginous Tumours: The Neighbours Matter



The Epiphyseal Growth Plate and Peripheral Cartilaginous Tumours

C.E. de Andrea

Carlos E. de Andrea