



Universiteit  
Leiden  
The Netherlands

## **Spatio-temporal framework for integrative analysis of zebrafish development studies**

Belmamoune, M.

### **Citation**

Belmamoune, M. (2009, November 17). *Spatio-temporal framework for integrative analysis of zebrafish development studies*. Retrieved from <https://hdl.handle.net/1887/14433>

Version: Corrected Publisher's Version

License: [Licence agreement concerning inclusion of doctoral thesis in the Institutional Repository of the University of Leiden](#)

Downloaded from: <https://hdl.handle.net/1887/14433>

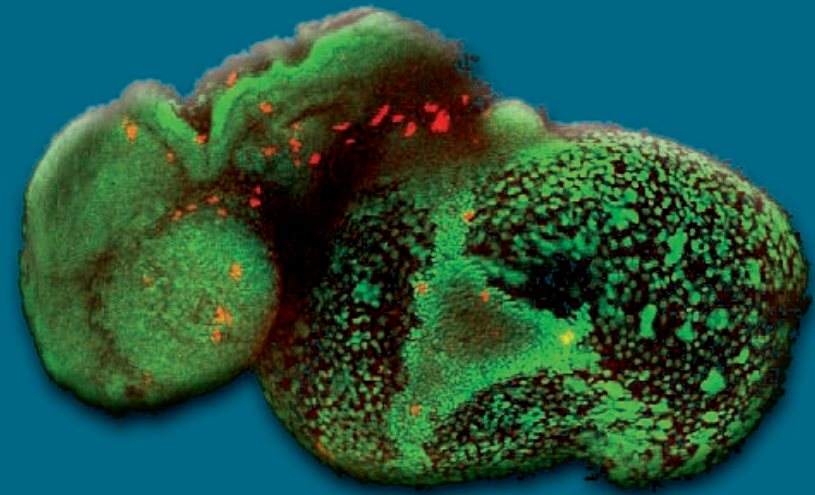
**Note:** To cite this publication please use the final published version (if applicable).

### *About the author*

Mounia Belmamoune was born on the 25th of September 1972 in Sidi Kacem, a small town in north-west part of Morocco. After completing her high-school studies, at Lycée El Mansour in Sidi Kacem. She moved to Kenitra studying at the Faculty Ibn Tofail and here she completed her applied chemistry studies (a mixture of Biology and Chemistry). In September 1997, She moved to Amsterdam, the Netherlands and in 1998, she started her masters in computer science at the University of Amsterdam (UvA). During her masters' studies, she worked as a C++ programmer for about two years and she was also an active member of the Kriterion student organisation. In 2003, she finalized her masters with an internship within the United Nations Headquarters in New York.

Mounia was always interested in combining her early biology study with computer science. Bio-informatics turned out a more suitable area where biology and computer science could be well combined. In 2004, she started her bio-informatics research described in this thesis at the Leiden Institute of Advanced Computer Sciences (LIACS), under the supervision of Dr. Ir. F.J. Verbeek. Since a year is the author employed as a software-engineer/developer in Almere, the Netherlands.

# **Spatio-Temporal Framework for Integrative Analysis of Zebrafish Developmental Studies**



**Mounia Belmamoune**