



Universiteit
Leiden
The Netherlands

Placental characteristics and complications in monochorionic twin pregnancies

Zhao, D.P.

Citation

Zhao, D. P. (2016, November 8). *Placental characteristics and complications in monochorionic twin pregnancies*. Retrieved from <https://hdl.handle.net/1887/44230>

Version: Not Applicable (or Unknown)

License: [Licence agreement concerning inclusion of doctoral thesis in the Institutional Repository of the University of Leiden](#)

Downloaded from: <https://hdl.handle.net/1887/44230>

Note: To cite this publication please use the final published version (if applicable).

Cover Page



Universiteit Leiden



The handle <http://hdl.handle.net/1887/44230> holds various files of this Leiden University dissertation.

Author: Zhao, D.P.

Title: Placental characteristics and complications in monochorionic twin pregnancies

Issue Date: 2016-11-08

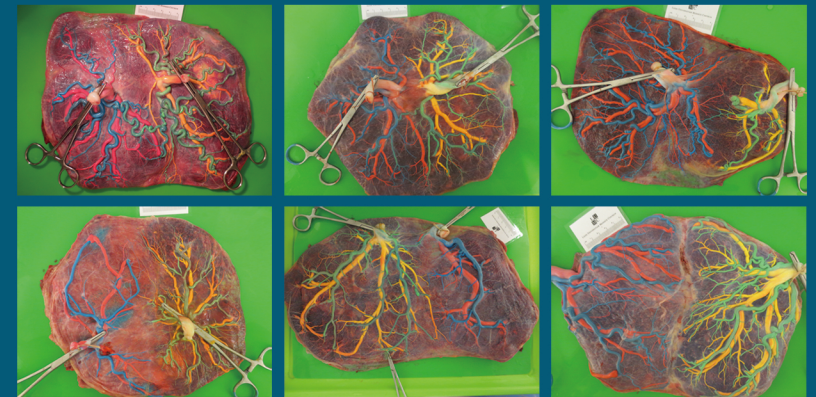
胎盤

Placental Characteristics and Complications in Monochorionic Twin Pregnancies

Placental Characteristics and Complications in Monochorionic Twin Pregnancies

De-Peng Zhao

赵德鹏



De-Peng Zhao

赵德鹏