



Universiteit  
Leiden  
The Netherlands

## **Clinical and laboratory features of mesenchymal stromal cells in pediatric stem cell transplantation**

Ball, L.M.

### **Citation**

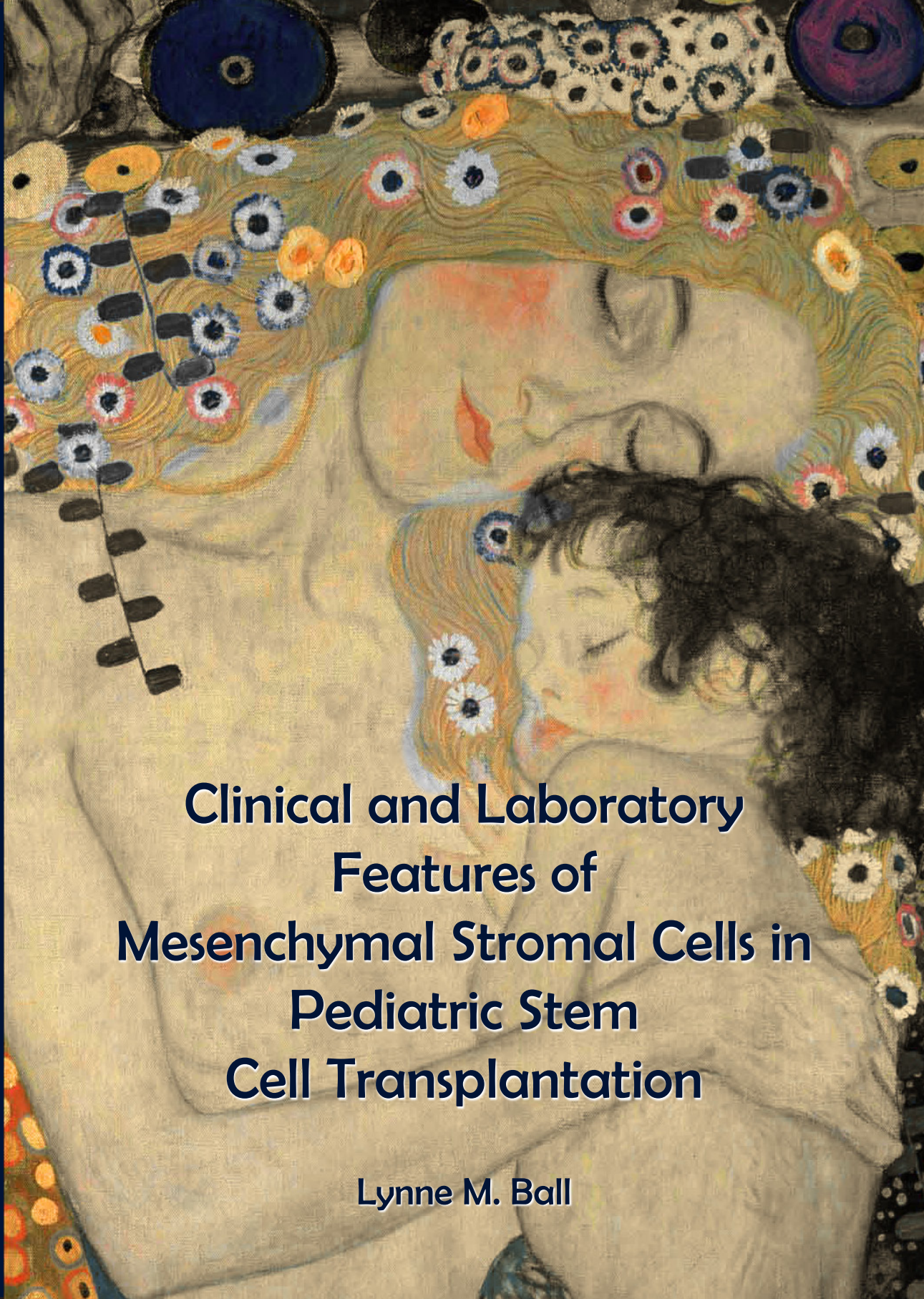
Ball, L. M. (2010, March 4). *Clinical and laboratory features of mesenchymal stromal cells in pediatric stem cell transplantation*. Retrieved from <https://hdl.handle.net/1887/15035>

Version: Corrected Publisher's Version

License: [Licence agreement concerning inclusion of doctoral thesis in the Institutional Repository of the University of Leiden](#)

Downloaded from: <https://hdl.handle.net/1887/15035>

**Note:** To cite this publication please use the final published version (if applicable).



**Clinical and Laboratory  
Features of  
Mesenchymal Stromal Cells in  
Pediatric Stem  
Cell Transplantation**

Lynne M. Ball

Clinical and Laboratory Features of Mesenchymal Stromal Cells in Pediatric Stem Cell Transplantation - Lynne M. Ball

ISBN: 978-90-8570-502-4