



Universiteit
Leiden
The Netherlands

Proximity effects in superconducting spin-valve structures

Flokstra, M.G.

Citation

Flokstra, M. G. (2010, February 17). *Proximity effects in superconducting spin-valve structures*. *Casimir PhD Series*. Retrieved from <https://hdl.handle.net/1887/14751>

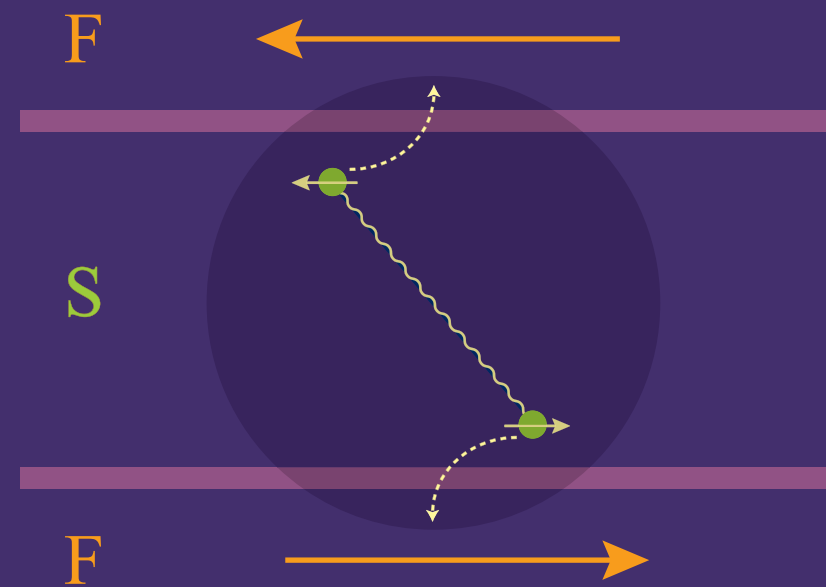
Version: Corrected Publisher's Version

License: [Licence agreement concerning inclusion of doctoral thesis in the Institutional Repository of the University of Leiden](#)

Downloaded from: <https://hdl.handle.net/1887/14751>

Note: To cite this publication please use the final published version (if applicable).

Proximity effects in superconducting spin-valve structures



Machiel Flokstra