

Cover Page



Universiteit Leiden



The handle <http://hdl.handle.net/1887/29823> holds various files of this Leiden University dissertation

**Author:** Bie, M.K. de

**Title:** Prevention of sudden cardiac death in patients with chronic kidney disease, focusing on implantable cardioverter defibrillator therapy

**Issue Date:** 2014-11-26



## ABSTRACT

**Background:** Coronary artery disease (CAD) is common in asymptomatic chronic dialysis patients and plays an important role in their poor survival. Early identification of these high risk patients could improve intervention and mortality. Abdominal aortic calcification (AAC), which can be quantified using a lateral abdominal X-ray, has been associated with CAD in dialysis patients. We hypothesized that the extent of AAC as assessed on a plain abdominal X-ray might be predictive of the presence of significant CAD in dialysis patients.

**Methods:** All patients currently enrolled in the ICD2 trial without a history of CABG or a PCI with stent were included in this study. All patients underwent CT-angiography (CTA) and a lateral X-ray of the abdomen. AAC on X-ray was quantified using a previously validated scoring system. The relation between AAC and the presence of CAD was subsequently assessed.

**Results:** A total of 90 patients were included in this study (71% male,  $67 \pm 8$  years old). Forty-six patients were found to have significant CAD following CTA. AAC-score was significantly higher in patients with CAD ( $10.2 \pm 4.8$  vs  $6.3 \pm 4.6$  ( $p < 0.05$ )). AAC-score is an independent predictor for the presence of CAD with a 1,2 fold higher risk per point increase ( $p = 0.001$ ) (Table). The AAC-score has a sensitivity of 85% and a specificity of 57% for predicting the presence of significant CAD.

**Conclusion:** This study shows that abdominal aortic calcification as assessed on a lateral abdominal X-ray is predictive for the presence of significant coronary artery disease in asymptomatic dialysis patients. This simple, non-invasive and cheap screening method could contribute to early identification of patients eligible for further screening for CAD

## INTRODUCTION

Coronary artery disease (CAD) plays an important role in the poor survival of chronic dialysis patients.<sup>1-3</sup> Optimizing treatment strategies for CAD could therefore substantially improve the outcome in this patient group. Although it is known that CAD is highly prevalent among dialysis patients, the currently reported prevalence is probably an underestimation of the actual prevalence. Several studies have indicated that also among asymptomatic dialysis patients CAD is prevalent in approximately 40-50% of the patients.<sup>4-6</sup> Identification of these patients would allow for earlier and more optimal treatment. In dialysis patients it has been recently demonstrated that aortic calcification is an independent predictor of cardiovascular morbidity and mortality. It was therefore suggested that this screening modality could be used for accurate cardiovascular risk estimation in dialysis patients.<sup>7, 8</sup> Next to this relationship with cardiovascular events it has also been demonstrated, in an autopsy study performed in >600 middle aged adults, that the degree of abdominal calcification is associated with the extent of calcified coronary plaques.<sup>9</sup>

Given these relationships we hypothesized that the extent of aortic calcification as assessed on a plain lateral abdominal X-ray might be predictive of the presence of significant CAD in dialysis patients. The purpose of this study was to assess the predictive value of abdominal calcification for the presence of significant CAD using a previously validated scoring system.<sup>7</sup>

## METHODS

### Study population

For this analysis all patients currently enrolled in the ICD2 trial (ISRCTN20479861) were included. The background, objectives and methods of this study have been previously reported.<sup>10</sup> In summary, this study will evaluate the effectiveness of prophylactic ICD implantation in chronic dialysis patients. Before patients are randomized an intensive screening protocol is performed including computed tomography angiography (CTA) and a lateral X-ray of the abdomen. All patients provided written informed consent and the design of the trial was approved by the local ethics committee. Patients with a previous CABG or PCI with stent were not included, as were patients with an aortic prosthesis and patients in whom the CT-scan was not feasible or considered uninterpretable.

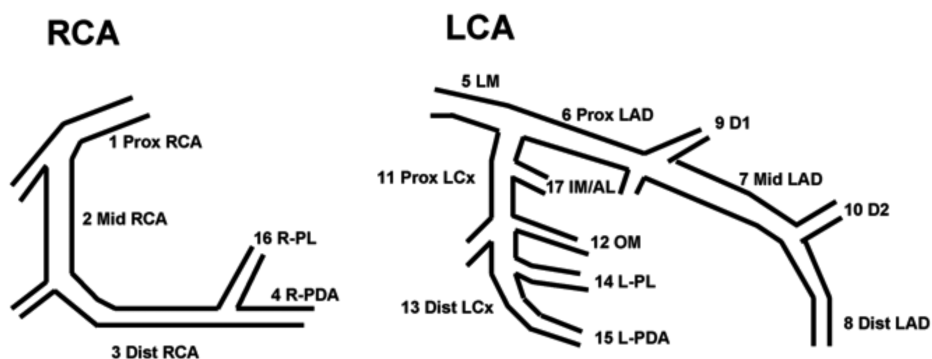
### Multi Slice CT protocol and MSCT data analysis

Prior to CT acquisition patients with a high heart rate, defined as >65 bpm, received oral  $\beta$ -blockers (metoprolol 50 or 100 mg, single dose, 1 hour before examination), if tolerated. Furthermore, depending on the patients residual kidney function pre and post procedural measures were taken in order to prevent further deterioration. These measures

included pre and post procedural hydration (dose and route depending on the patients residual kidney function) and moreover in hemodialysis patients the scan was performed on the day prior to the next dialysis session.

Examinations were performed with a 64-detector row CT Scanner (Aquilion 64, Toshiba Medical Systems, Tokyo, Japan) or a 320-detector row CT scanner (Aquilion ONE, Toshiba, Tokyo, Japan) as previously described.<sup>11</sup>

Data analysis was performed by two experienced CT observers. If there was no consensus between these 2 reviewers a 3rd independent reviewer was consulted. Data of all major epicardial segments (in the RCA segments 1-3; in the LAD segments 5-8; and in the LCx segments 11 and 13 (see figure 1)) was analyzed as previously described.<sup>11</sup>



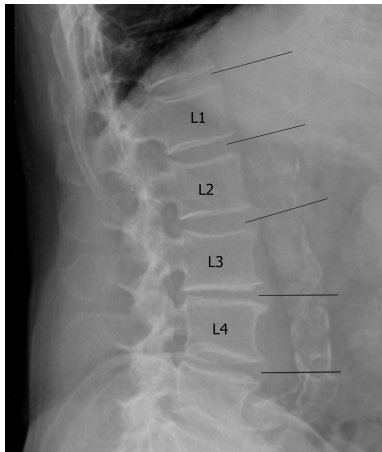
**Figure 1.** Coronary anatomy

### Quantification of abdominal aortic calcification

The extent of aortic calcification was calculated on a lateral X-ray of the abdomen. The lateral X-ray was taken in a standing position using standard radiographic equipment. The grading was performed using a previously validated grading system<sup>12, 13</sup> in which the extent of calcific deposits is graded on a per segment basis using the lumbar vertebral segments L1-L4. Per segment a score between 0 and 3 was given for both the anterior and posterior wall of the Aorta. These 8 scores resulted in a composite abdominal aortic calcification score (AACscore) ranging between 0 and 24 points. See figure 2.

### Statistical analysis

Continuous data were compared using the 2-tailed Student's t-test. Categorical data were compared using the Chi-square test. Using logistic regression analysis the univariate predictive value of the baseline parameters, for the presence of coronary artery disease, was assessed. Subsequently a multivariate analysis (controlling for all univariate predictors with  $p < 0.2$ ) was performed. All statistical analyses were performed using SPSS (version 20.0, SPPS Inc. Chicago, Illinois). All statistical tests were two-sided and a  $p$ -value  $< 0.05$  was considered statistically significant.



#### Abomdinal Aortic Calcification

For all segments both the anterior and posterior wall are graded for the extent of vascular calcification.

#### Grading:

0 points : No calcific deposits

1 point : less than 1/3 of the wall calcified

2 points : between 1/3 and 2/3 of the wall affected.

3 points : more than 2/3 of the wall affected.

**Figure 1.** Grading of abdominal aortic calcification

## RESULTS

For this study 90 out of the 142 patients that are currently enrolled in the ICD2 study were eligible for this analysis; 23 patients were not included because of history of CABG, 10 patients because of history of PCI, 6 patients because of a high/irregular heart rate, 4 patients had an non-diagnostic CTA, 3 patients had an aortic prosthesis and 4 patients refused CTA. Furthermore in 2 patients no x-ray was obtained.

Patients were predominantly male (71%) with an average age of  $67 \pm 7$  years. Most patients were on hemodialysis (69%) for a median duration for 18 [9, 29] months. The average abdominal aortic calcification score was  $8.2 \pm 5.0$  points (range 0 – 20.5 points). The baseline characteristics are summarized in table 1.

### Coronary artery disease

Significant coronary artery disease was documented in 46 (51%) of the patients. Compared to patients with no significant coronary artery disease these patients were significantly older ( $69 \pm 7$  vs.  $65 \pm 7$  years,  $p < 0.05$ ). Furthermore patients with coronary artery disease were predominantly male (80 vs. 61%,  $p < 0.05$ ). The abdominal aortic calcification score was significantly higher in patients with significant coronary artery disease measured by CTA ( $10.2 \pm 4.8$  vs  $6.3 \pm 4.6$  points,  $p < 0.05$ ). As could be expected the coronary artery calcium score assessed by CT was also higher in patients with CAD.

### Prediction of the presence of coronary artery disease

Using logistic regression analysis the univariate predictive value of the baseline parameters, for the presence of coronary artery disease, was assessed. Older age, male gender and abdominal aortic calcification score were significant univariate predictors for the presence of significant coronary artery disease. Multivariate analysis demonstrated that the AAC

score was a significant and independent predictor for the presence of significant coronary artery disease with a 1.2 fold higher risk per point increase. See table 2.

**Table 1: Baseline characteristics**

	All (n=90)	No CAD (n=44)	CAD (n=46)
<b>Age, yrs</b>	67 ± 8	65 ± 7	69 ± 7*
<b>Male gender, nr.(%)</b>	64 (71%)	27 (61%)	37 (80%)
<b>Hemodialysis, nr.(%)</b>	62 (69%)	29 (66%)	33 (72%)
<b>Dialysis Vintage, months</b>	18 [9, 29]	17 [9, 33]	18 [8, 25]
<b>BMI</b>	26.8 ± 4.4	26.8 ± 4.5	26.8 ± 4.3
<b>Hypertension, nr (%)</b>	70 (77%)	32 (73%)	38 (83%)
<b>Diabetes, nr (%)</b>	26 (29%)	12 (27%)	14 (30%)
<b>History of smoking, nr (%)</b>	60 (67%)	25 (57%)	35 (76%)
<b>Beta-Blocker, nr (%)</b>	45 (50%)	23 (52%)	22 (48%)
<b>ACEi/ARB, nr (%)</b>	48 (53%)	23 (48%)	27 (59%)
<b>Statin, nr (%)</b>	45 (50%)	21 (48%)	24 (52%)
<b>CACS</b>	690 [133, 2085]	279 [20, 1691]	912 [441, 2217]*
<b>AAC-score</b>	8.2 ± 5.1	6.3 ± 4.6	10.2 ± 4.8*

CAD = coronary artery disease; BMI = body mass index; ACEi = angiotensin converting enzyme inhibitor; ARB = angiotensin receptor blocker; CACS = coronary artery calcification score; AAC = abdominal aortic calcification; \* = p <0.05

**Table 2: Uni- and multivariate predictors for the presence of CAD**

	Univariate	Multivariate
<b>Age</b>	1.06 (1.00 – 1.13), p <0.05	1.02 (0.95 – 1.09), p = 0.64
<b>Male gender</b>	2.59 (1.00 – 6.68), p <0.05	2.53 (0.88 – 7.27), p = 0.09
<b>Hemodialysis</b>	1.31 (0.54 – 3.20), p = 0.55	
<b>Dialysis vintage</b>	1.0 (0.99 – 1.00), p = 0.42	
<b>AACscore (per point)</b>	1.19 (1.07 – 1.30), p <0.05	1.20 (1.18 – 1.32), p = 0.001
<b>Diabetes</b>	1.17 (0.47 – 2.90), p = 0.74	
<b>History of smoking</b>	2.42 (0.98 – 5.97), p = 0.055	2.42 (0.88 – 7.27), p = 0.09
<b>Hypertension</b>	1.78 (0.65 – 4.89), p = 0.26	
<b>BMI</b>	1.0 (0.91 – 1.10), p = 0.95	

AAC = abdominal aortic calcification; BMI = body mass index;

### Sensitivity and Specificity

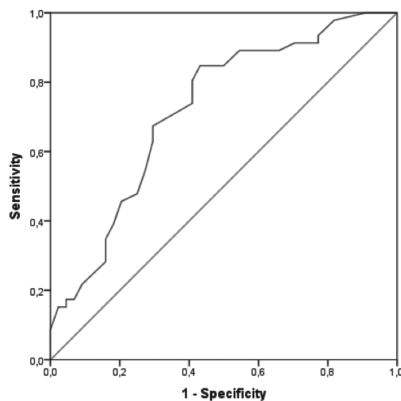
Using ROC curve analysis the optimal cut-off for the abdominal aortic calcification score was assessed: with a cut-off of 6.5 points the AACscore had a sensitivity of 85% and a specificity of 57% for predicting the presence of significant coronary artery disease. Furthermore when this cutoff is used the AACscore has a negative predictive value of 78% and a positive predictive value of 67%. See table 3. Receiver operating characteristics curve analysis demonstrated an area under the curve of 0.72 ( $p < 0.05$ ). See figure 2.

When this cutoff was entered in the multivariable model, as described previously, an AACscore  $\geq 6.5$  was associated with a 6.28 (95% CI 2.17 – 18.22,  $p = 0.001$ ) fold increased risk for the presence of significant CAD.

**Table 3:** . Presence of significant CAD using an AACscore cutoff of 6.5 points

	CAD	No CAD	
AACscore $\geq 6.5$	39	19	PPV : 67%
AACscore $< 6.5$	7	25	NPV : 78%
	Sensitivity : 85%	Specificity : 57%	

CAD: Coronary Artery Disease, AACscore: Abdominal Aortic Calcification score



**Figure 3.** ROC curve analysis

## DISCUSSION

This study demonstrates that the extent of abdominal aortic calcification, assessed on a plain lateral abdominal X-ray, is predictive for the presence of significant CAD in chronic dialysis patients.



### **The necessity to detect significant CAD in dialysis patients**

CAD is highly prevalent among dialysis patients and is a major contributor to the poor outcome of dialysis patients.<sup>2, 14</sup> Optimal treatment of CAD could however lead to significant improvements. For instance it has been demonstrated that revascularization in dialysis patients in whom significant CAD is detected may indeed increase survival.<sup>15-17</sup> Nevertheless, despite these observations, it should be noted that invasive treatment for CAD is currently underused in dialysis patients.<sup>18</sup>

Since significant CAD is highly prevalent among asymptomatic dialysis patients a substantial part is probably not optimally treated. It is possible that these patients would benefit from more intensive medical treatment or even revascularization. Some controversy remains on this topic however, since optimal treatment in this patient group is not a clear cut case. Further studies are needed in the future to address this problem. It is clear though, that screening of dialysis patients for the presence of significant CAD is warranted in order to optimize treatment.

### **Abdominal aortic calcification and coronary artery disease**

Already in the 1950s it was reported, based on autopsy studies of > 600 middle aged adults, that there is a highly significant association between the degree of abdominal aortic calcification and the presence of calcified plaque in the coronary arteries.<sup>9</sup> Following these findings it was demonstrated, in the general population, that using a plain lateral abdominal x-ray the severity of aortic calcification can be predicted. Moreover a relationship between the extent of aortic calcification found on X-ray and cardiovascular morbidity and mortality was reported.<sup>19, 20</sup> Consequently this relationship was also documented in dialysis patients.<sup>7</sup> To our knowledge this is the first study to demonstrate that is predictive of the presence of significant CAD in dialysis patients.

### **Other modalities to detect significant CAD**

Many modalities to detect CAD are currently available, however each of them has its own limitations. The gold standard for the diagnosis of CAD, coronary angiography (CAG), has been suggested as a routine screening tool of CAD in dialysis patients.<sup>21</sup> However, given its invasive nature, the high costs and the risks of complications, other diagnostic tools would probably be preferable in this asymptomatic population. Other imaging modalities have been proposed as well, such as dobutamine stress echocardiography and myocardial perfusion scintigraphy (MPS).<sup>22</sup>

Although no true comparison can be made between the screening modality presently investigated and other diagnostic tools for coronary artery disease, it is presumable that a plain lateral abdominal X-ray has financial and logistical advantages over the other diagnostic screening modalities mentioned.

**Clinical implications**

CAD is highly prevalent among dialysis patients but it has not yet been decided which diagnostic modality is preferable. However routine screening for CAD, using one of the many available screening modalities is warranted in order to improve the abysmal outcome of this patient group. We showed that aortic calcification on plain lateral abdominal x-ray is predictive for the presence of significant CAD. Using this inexpensive, non-invasive screening method, patients with significant CAD can be easily identified. Subsequently the most optimal following diagnostic or treatment strategy can then be initiated.

**Limitations**

CT-angiography was used to detect the presence of significant CAD instead of CAG. Although it has been recently reported by our group that CT-angiography is feasible to detect CAD in dialysis patients, coronary angiograms still should be considered the gold standard.<sup>11</sup> Future studies therefore should compare the AACscore to CAG in order to confirm these findings.

**CONCLUSION**

Aortic calcification as assessed on a plain lateral abdominal X-ray is predictive for the presence of significant CAD in asymptomatic chronic dialysis patients. Using this X-ray patients with high risk for CAD in whom treatment could be optimized can be identified.

## REFERENCE LIST

1. U.S. Renal Data System, USRDS 2006 Annual Data Report: Atlas of Chronic Kidney Disease and End-Stage Renal Disease in the United States, *National Institutes of Health, National Institute of Diabetes and Digestive and Kidney Diseases, Bethesda, MD. 2006.*
2. Cheung AK, Sarnak MJ, Yan G, Berkoben M, Heyka R, Kaufman A et al. Cardiac diseases in maintenance hemodialysis patients: results of the HEMO Study. *Kidney Int* 2004;65(6):2380-9.
3. de Bie MK, van DB, Gaasbeek A, van BM, van EL, Bax JJ et al. The current status of interventions aiming at reducing sudden cardiac death in dialysis patients. *Eur Heart J* 2009;30(13):1559-64.
4. Charytan D, Kuntz RE, Mauri L, DeFilippi C. Distribution of coronary artery disease and relation to mortality in asymptomatic hemodialysis patients. *Am J Kidney Dis* 2007;49(3):409-16.
5. Joki N, Hase H, Nakamura R, Yamaguchi T. Onset of coronary artery disease prior to initiation of haemodialysis in patients with end-stage renal disease. *Nephrol Dial Transplant* 1997;12(4):718-23.
6. Ohtake T, Kobayashi S, Moriya H, Negishi K, Okamoto K, Maesato K et al. High prevalence of occult coronary artery stenosis in patients with chronic kidney disease at the initiation of renal replacement therapy: an angiographic examination. *J Am Soc Nephrol* 2005;16(4):1141-8.
7. Verbeke F, Van BW, Honkanen E, Wikstrom B, Jensen PB, Krzesinski JM et al. Prognostic value of aortic stiffness and calcification for cardiovascular events and mortality in dialysis patients: outcome of the calcification outcome in renal disease (CORD) study. *Clin J Am Soc Nephrol* 2011;6(1):153-9.
8. Okuno S, Ishimura E, Kitatani K, Fujino Y, Kohno K, Maeno Y et al. Presence of abdominal aortic calcification is significantly associated with all-cause and cardiovascular mortality in maintenance hemodialysis patients. *Am J Kidney Dis* 2007;49(3):417-25.
9. EGGEN DA, STRONG JP, MCGILL HC, Jr. CALCIFICATION IN THE ABDOMINAL AORTA; RELATIONSHIP TO RACE, SEX, AND CORONARY ATHEROSCLEROSIS. *Arch Pathol* 1964;78:575-83.
10. de Bie MK, Lekkerkerker JC, van Dam B, Gaasbeek A, van Buren M, Putter H et al. Prevention of sudden cardiac death: rationale and design of the Implantable Cardioverter Defibrillators in Dialysis patients (ICD2) Trial--a prospective pilot study. *Curr Med Res Opin* 2008;24(8):2151-7.
11. de Bie MK, Buiten MS, Gaasbeek A, Boogers MJ, Roos CJ, Schuijf JD et al. CT Coronary Angiography Is Feasible for the Assessment of Coronary Artery Disease in Chronic Dialysis Patients, Despite High Average Calcium Scores. *PLoS One* 2013;8(7):e67936.
12. Kauppila LI, Polak JF, Cupples LA, Hannan MT, Kiel DP, Wilson PW. New indices to classify location, severity and progression of calcific lesions in the abdominal aorta: a 25-year follow-up study. *Atherosclerosis* 1997;132(2):245-50.
13. Wilson PW, Kauppila LI, O'Donnell CJ, Kiel DP, Hannan M, Polak JM et al. Abdominal aortic calcific deposits are an important predictor of vascular morbidity and mortality. *Circulation* 2001;103(11):1529-34.
14. Foley RN, Parfrey PS, Sarnak MJ. Clinical epidemiology of cardiovascular disease in chronic renal disease. *Am J Kidney Dis* 1998;32(5 Suppl 3):S112-S119.
15. Hemmelgarn BR, Southern D, Culleton BF, Mitchell LB, Knudtson ML, Ghali WA. Survival after coronary revascularization among patients with kidney disease. *Circulation* 2004;110(14):1890-5.
16. Yasuda K, Kasuga H, Aoyama T, Takahashi H, Toriyama T, Kawade Y et al. Comparison of percutaneous coronary intervention with medication in the treatment of coronary artery disease in hemodialysis patients. *J Am Soc Nephrol* 2006;17(8):2322-32.
17. Kumar N, Baker CS, Chan K, Duncan N, Malik I, Frankel A et al. Cardiac survival after pre-emptive coronary angiography in transplant patients and those awaiting transplantation. *Clin J Am Soc Nephrol* 2011;6(8):1912-9.
18. Charytan D, Mauri L, Agarwal A, Servoss S, Scirica B, Kuntz RE. The use of invasive cardiac procedures after acute myocardial infarction in long-term dialysis patients. *Am Heart J* 2006;152(3):558-64.
19. Witteman JC, Kok FJ, van Saase JL, Valkenburg HA. Aortic calcification as a predictor of cardiovascular mortality. *Lancet* 1986;2(8516):1120-2.
20. Wilson PW, Kauppila LI, O'Donnell CJ, Kiel DP, Hannan M, Polak JM et al. Abdominal aortic calcific deposits are an important predictor of vascular morbidity and mortality. *Circulation* 2001;103(11):1529-34.
21. Joki N, Hase H, Takahashi Y, Ishikawa H, Nakamura R, Imamura Y et al. Angiographical severity of coronary atherosclerosis predicts death in the first year of hemodialysis. *Int Urol Nephrol* 2003;35(2):289-97.
22. De Vriese AS, Vandecasteele SJ, Van den Bergh B, De Geeter FW. Should we screen for coronary artery disease in asymptomatic chronic dialysis patients? *Kidney Int* 2011.



