



Universiteit  
Leiden  
The Netherlands

## Optimal timing of pulmonary valve replacement in tetralogy of Fallot

Straten, A. van

### Citation

Straten, A. van. (2008, December 17). *Optimal timing of pulmonary valve replacement in tetralogy of Fallot*. Retrieved from <https://hdl.handle.net/1887/13393>

Version: Corrected Publisher's Version

License: [Licence agreement concerning inclusion of doctoral thesis in the Institutional Repository of the University of Leiden](#)

Downloaded from: <https://hdl.handle.net/1887/13393>

**Note:** To cite this publication please use the final published version (if applicable).

# 2

## **Right Ventricular Function Late after Total Repair of Tetralogy of Fallot**

A van Straten

HW Vliegen

MG Hazekamp

A de Roos

*Based on Eur Radiol. 2005;15:702-7*

*and Encyclopedic Reference of Imaging, Springer 2007*

## **Abstract**

Over the past decades, life expectancy in patients with congenital heart disease has increased dramatically. However, serious complications may develop late after total repair in infancy. These complications are usually the result of longstanding pulmonary regurgitation which leads to dilatation of the right ventricle and an increased risk for severe arrhythmias. Therefore lifelong follow-up in these patients is required. Cardiac magnetic resonance imaging is the current imaging tool of choice because it offers superior imaging quality and enables accurate quantification of functional parameters such as flow volumes and systolic and diastolic performance.

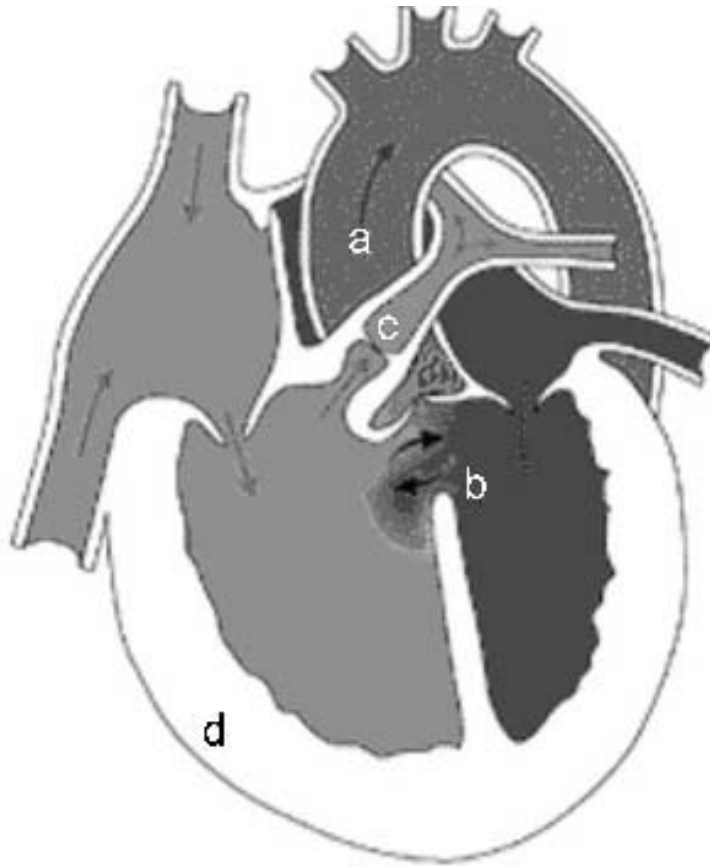
## Introduction

Presently, the vast majority of congenital heart diseases can be surgically repaired. However, even after corrective surgery, the right ventricle (RV) may remain subject to an abnormal pressure and/or volume overload, due to longstanding residual pulmonary regurgitation (PR) and/or stenosis<sup>1,2</sup>. Hence, RV function has shown to be a major determinant of clinical outcome in congenital heart disease (CHD) patients. With the growing number of long-term survivors amongst CHD patients, the need for accurate follow-up becomes increasingly important in clinical management. Careful monitoring of functional parameters such as cardiac function and vascular flow will help to allow early detection of the most important postoperative complications and aid in the timing of re-interventions<sup>3</sup>. Timely detection of late complications requires adequate assessment of right ventricular size and function as well as quantification of intracardiac blood flow in these patient groups. Widely used techniques, such as echocardiography and radionuclide studies, have limitations when applied for this purpose, especially in patients with abnormal right ventricular morphology.

Transthoracic echocardiography is still the most commonly used technique in the non-invasive assessment of CHD, especially in young children whose small thoracic diameter provides an optimal acoustic window<sup>4</sup>. After surgical intervention, however, the use of ultrasound is often restricted because of scar tissue and thoracic deformations<sup>5</sup>.

The current gold standard in RV function assessment is cardiac MRI. The role of MRI for assessing pre- and post-surgical aspects of CHD is well established<sup>6</sup>. Unlike echocardiography, MRI provides unlimited access to the thoracic cavity and different techniques are available for detailed visualization and accurate measurement of the complex post-surgical morphology and functional status. Biventricular volumes and blood flow can be accurately measured during a single examination, allowing complete evaluation of both right and left ventricular systolic and diastolic function as well as intracardiac and vascular flow.

With an incidence of 0.3 – 0.5 per 1000 live births, tetralogy of Fallot (TOF) is the most common cause of cyanotic CHD (figure 2.1)<sup>7</sup>.



*Figure 2.1. Tetralogy of Fallot heart with overriding of the aorta, malalignment ventricular septal defect, pulmonary stenosis and consequently right ventricular hypertrophy*

Traditionally, corrective surgery was preceded by a palliative shunt connecting the systemic arterial circulation to the pulmonary arterial system. It was thought that these shunts would promote growth of the pulmonary arteries and total correction could be delayed until the patient was larger. Nowadays, patients undergo total repair in infancy, which may decrease the risk of late sudden death, but may increase the severity of residual PR in some patients, due to the higher number of trans-annular patch procedures needed in young infants. In this review, we will focus on the MRI assessment of RV function in post-repair TOF patients.

## **Right ventricular function**

### **Systolic function**

Ventricular function is traditionally divided into systole and diastole, describing ventricular emptying and filling respectively. In TOF, usually both systolic and diastolic right ventricular function is impaired, due to severe dilatation and hypertrophy. Assessment of emptying and filling patterns can be performed by echocardiography, or cardiac MRI.

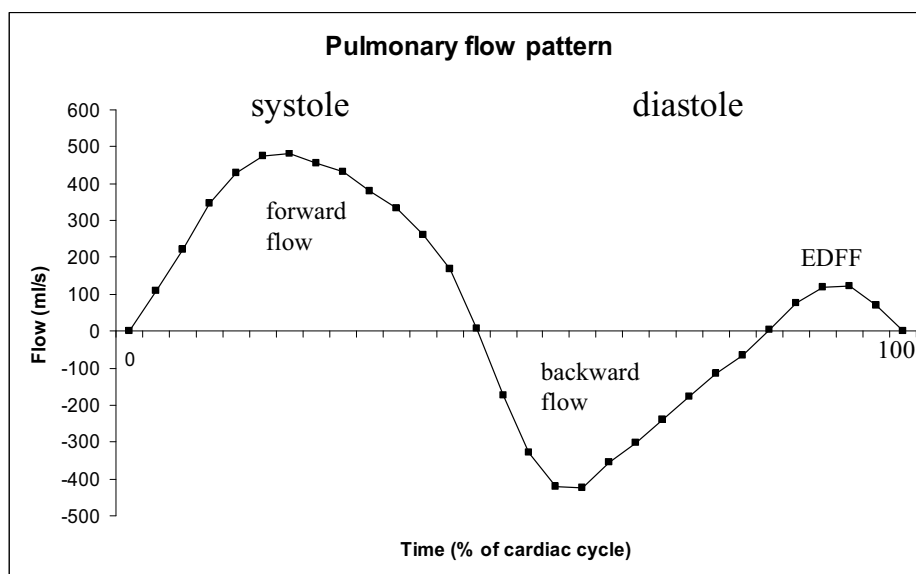
Nowadays, gradient-echo MR is the most accurate imaging modality for measuring ventricular volumes<sup>8,9</sup>. This technique has been validated extensively for measuring right ventricular function<sup>9-11</sup>. The practical applicability of this method has also been demonstrated both in adults and in children. Helbing et al. studied RV volumetrics using MRI in 20 children with CHD and 22 healthy children<sup>12</sup>. In this study, a success rate of 97% was achieved for measuring RV function, while nearly half of the children were less than 10 years of age. The systolic function is usually expressed as the ejection fraction, calculated according to the Simpson's method (stroke volume / end-diastolic volume). In severe PR, the ejection fraction is usually diminished due to extreme dilation of the right ventricle. Since the increase in RV end-diastolic volume in these patients is more than the increase in stroke volume, these ventricles are probably acting on the down slope of the Frank Starling curve, stressing the need for timely PVR.

Since the stroke volume is greatly determined by the volume of regurgitant flow, the ejection fraction is not useful in load-dependent conditions, e.g. before and after PVR. Therefore, RV ejection fraction should be corrected for pulmonary and tricuspid regurgitation as well as residual intracardiac shunts (RV-EF<sub>cor</sub>) by using the net pulmonary flow, instead of the stroke volume based on end-diastolic and end-systolic volumes. In a recent study by our group in 26 adult TOF patients undergoing PVR for severe regurgitation, we found a dramatic increase in RV-EF<sub>cor</sub> from  $25.2 \pm 8.0\%$  to  $43.3 \pm 13.7\%$  ( $P < 0.001$ ) using this method. Furthermore, the improvement of systolic function after PVR was associated with improved functional class, underscoring the practical implication of this approach. Global left ventricular is a major prognostic factor in patients with heart failure. It is known that severe impairment of RV function may

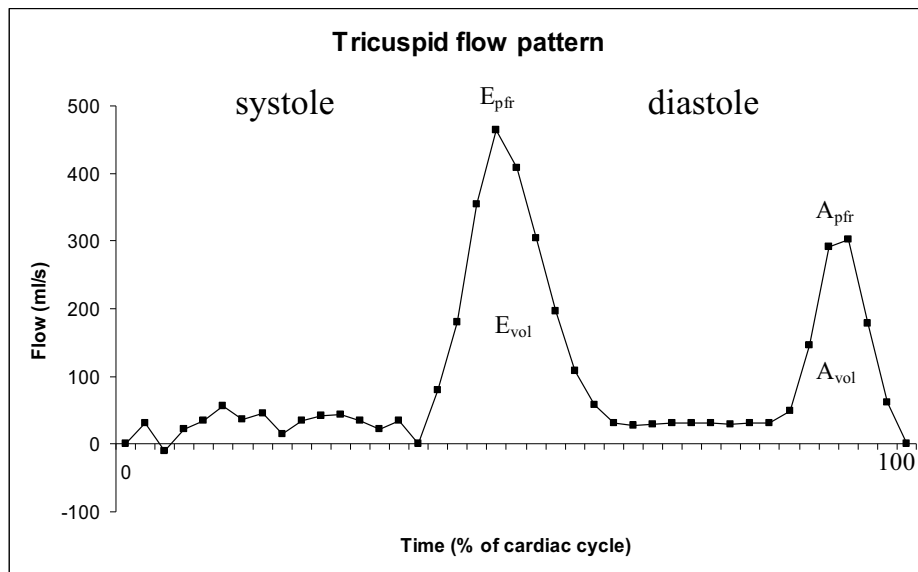
hamper left ventricular function. In a recent study, Dornier et al.<sup>13</sup> describe a new method for assessment of both global and regional left ventricular function in a single imaging session by using tagged MRI. Since the effects of PVR on left ventricular function are largely unknown, this method could be a valuable tool in assessment of pre- and post-PVR left ventricular function in TOF patients.

### Diastolic function

Diastolic filling of the right ventricle can be divided into 3 different phases. After closure of the pulmonary valve, but before opening of the tricuspid valve, the ventricle relaxes, while the volume remains constant. This so called isovolumetric relaxation is followed by the first phase, the early filling of the ventricle. The relaxed right ventricle is filled until equilibrium with atrial pressure is reached. The second phase, the diastasis, is recognized by very slow diastolic filling. During the final phase, filling of the RV is the result of atrial contraction. Global diastolic function of the right ventricle can be derived from time-volume curves obtained with phase contrast MR imaging. Velocity encoding of both pulmonary (figure 2.2) and tricuspid (figure 2.3) flow provides accurate information on the diastolic filling pattern of the right ventricle, even in the presence of severe pulmonary regurgitation.



**Figure 2.2.** Flow vs. time curve of flow through the main pulmonary artery. In this patient there is regurgitant flow in diastole followed by end-diastolic forward flow. This flow pattern can be found in patients with a restrictive right ventricle



**Figure 2.3.** Flow vs. time curve of flow through the tricuspid valve. The two waves correspond with the early filling and the atrial contraction respectively. In normal subjects the early filling peak is higher than the atrial contraction peak.

$E_{pfr}$  = Early filling, peak flow rate,  $E_{vol}$  = Early filling volume,  $A_{pfr}$  = Atrial contraction, peak flow rate,  $A_{vol}$  = Atrial contraction, volume.

Decreased diastolic function is frequently observed in CHD<sup>14-16</sup>. Diastolic dysfunction is characterized by an abnormal filling pattern which is marked by delayed relaxation and impaired diastolic filling with or without increased stiffness<sup>17</sup>. When diastolic filling is severely hampered, the ventricle may become restrictive. The restrictive right ventricle acts as a passive conduit between the right atrium and pulmonary artery, hence directly forwarding the blood flow during the atrial contraction to the main pulmonary artery<sup>15-18</sup>. The clinical implications of restriction are subject to debate; Helbing et al. reported a decreased exercise performance in children with restrictive RV's after repair of TOF compared to similar children without signs of restriction<sup>14</sup>. Gatzoulis et al., however, found an improvement of exercise performance in combination with less cardiomegaly in repaired TOF patients with restriction, as compared to repaired TOF patients without restriction<sup>15</sup>.

In recent years, steady-state free precession (SSFP) sequences like Sensitivity Encoding (SENSE) have dramatically improved image quality. This is due to the higher signal-to-noise ratio, contrast-to-noise ratio and temporal resolution compared with conventional

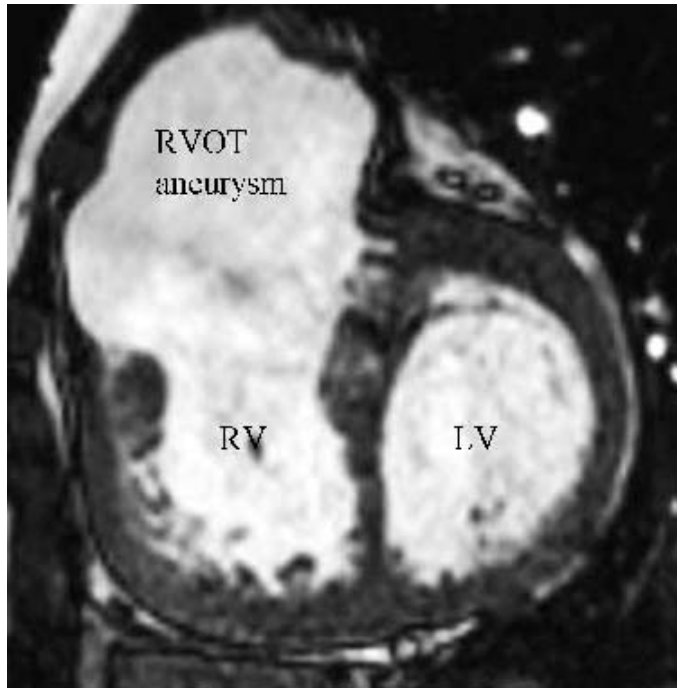


gradient-echo sequences. SSFP sequences have therefore become the sequence of choice for evaluation of cardiac (systolic) function. A recent study by Bernd et al.<sup>19</sup> showed that further improvement of temporal resolution can be achieved by using a parallel imaging technique in comparison with standard segmented single-slice SSFP techniques.

### **Right ventricular outflow tract**

The current interest in aetiological factors in the development of RV failure has focussed on the RV outflow tract (RVOT). Pulmonary regurgitation relates to RVOT reconstruction and, in particular, the usage of a patch, either transannular or confined to the right ventricle<sup>20,21</sup>. Therefore, surgical management has moved towards preservation of the pulmonary valve function if possible and limitation of the extent of patching when a patch is needed. Adequate relief of the RVOT without inducing significant PR, however, remains a surgical challenge. Since the emergence of cardiovascular MRI as the gold standard for evaluation of cardiac morphology and function, accurate quantification of valvular flow and ventricular volumes has been an important step towards optimal timing of pulmonary valve replacement. Recent studies have stressed the clinical importance of aneurysm formation and akinesia of the RVOT<sup>22</sup> (figure 2.4).

Davlouros et al. found the combination of chronic PR and the presence of RVOT aneurysmal or akinetic regions to be the main predisposing factors for RV failure in adult patients late after repair of TOF. Furthermore, reconstruction of the RVOT during initial repair with a patch, whether, transannular or confined to the right ventricle, was associated with higher PR fractions compared to patients who did not receive a patch, which is in accordance with previous studies<sup>23</sup>. Finally, in two other studies, the correlation between RVOT aneurysms and sustained ventricular tachycardia has been reported<sup>24,25</sup>.



*Figure 2.4. Large aneurysm in the right ventricular outflow tract in a Fallot patient with longstanding pulmonary regurgitation.*

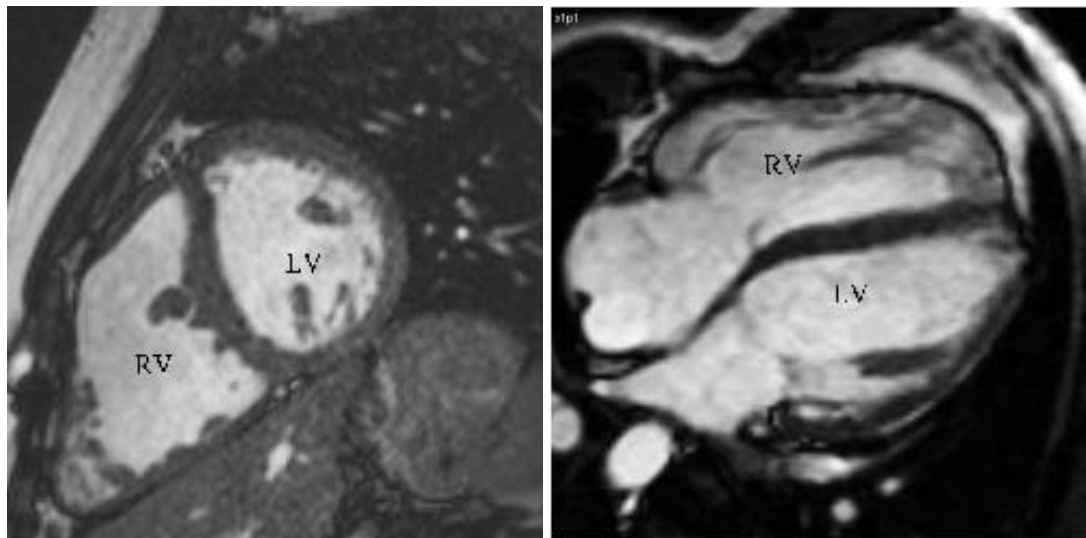
*RV = right ventricle, LV = left ventricle, RVOT = right ventricular outflow tract.*

## **Pulmonary valve replacement**

Repeat operations late after total repair of TOF are not uncommon. The deleterious effects of longstanding PR and consequently RV dilatation (figure 2.5a and 2.5b) and arrhythmias, necessitate additional reconstructions in some, but not all, patients.

The promising results of studies on RV function improvement in TOF patients after pulmonary valve replacement advocate a less restrictive strategy concerning pulmonary valve replacement in patients with moderate to severe PR and RV dilatation late after total repair for TOF<sup>26,27</sup>. Pulmonary valve replacement may be combined, if necessary, with RVOT reconstruction, closure of residual VSD, tricuspid valve repair and reconstruction of peripheral pulmonary arteries. A regurgitant pulmonary valve may be replaced by a pulmonary homograft. Pulmonary homografts last longer than aortic homografts in pulmonary position. Nevertheless, homografts may suffer from calcific degeneration and usually need later replacement<sup>28</sup>. Some surgeons use mechanical valves

in pulmonary position, but since the patients are usually young, and females may develop pregnancy wish, life-long anticoagulation should be avoided if possible. Before PVR, a full hemodynamic assessment is essential. In our institution, all patients who are eligible for PVR undergo a cardiac MR examination to assess the presence of valve insufficiencies and intracardiac shunting and to determine systolic and diastolic function.



**Figure 2.5a (left).** Short-axis gradient echo image of a tetralogy of Fallot patient with right ventricular dilatation.

**Figure 2.5b (right).** Long-axis balanced Fast Field Echo (bFFE) image of another tetralogy of Fallot patient with right ventricular dilatation.

*RV = right ventricle, LV =left ventricle*

A MR angiography is performed to detect possible branch pulmonary artery stenoses. Our experience with homograft pulmonary valve replacement late after correction of TOF now consists of 60 patients. Patients with pulmonary atresia or a conduit inserted at initial repair, patients with absent pulmonary valve syndrome or those presenting with an important residual VSD or predominantly residual pulmonary stenosis are not included in this series. The mean interval between TOF repair and later pulmonary homograft insertion is 19.3 years (range: 2.7 – 40.3 years). Hospital mortality is 1.7 % while one patient died 18 months after uncomplicated surgery, probably because of ventricular rhythm disturbances. Symptomatic improvement after PVR was striking: 6 months post-PVR functional class had improved from a mean NYHA class 2.3 to a mean class 1.4.

Normalization of functional class was not observed in patients with preoperative functional class III. Comparison of pre- and postoperative MRI scans showed significant reduction of right ventricular volumes 6 months after insertion of the pulmonary homograft <sup>27</sup>. Furthermore, the RV function improvement was sustained at 19 months follow-up in the majority of patients. However, recurrence of pulmonary regurgitation after PVR appeared to reduce recovery of right ventricular systolic function <sup>29</sup>. Diastolic function, though, did not show early improvement 6 months after PVR. At 19 months however, there was a significant improvement of diastolic function. Possibly the rapid volume unloading after PVR increases systolic performance, whereas improvement in diastolic function requires long-term remodeling <sup>30</sup>. Optimal timing of pulmonary valve replacement is still a subject of debate, as the amelioration of right ventricular function has to be weighed against the risk of later reoperation for homograft failure. A scoring system is under development to define the optimal moment of pulmonary valve replacement. Several parameters should be included such as functional class, right ventricular dimensions and ejection fraction, degree of pulmonary regurgitation, degree of tricuspid regurgitation, degree and nature of arrhythmia's, QRS-duration, residual ventricular septal defect, and right ventricular outflow tract obstruction.

### **Other MRI applications**

The recent implementation of fast MR imaging sequences along with the ability of MR imaging to acquire images in any given orientation and with high soft-tissue contrast makes this technique attractive for guiding interventional procedures <sup>31,32</sup>. Razavi et al. <sup>31</sup> showed that cardiac catheterization guided by MRI is safe and practical in a clinical setting, allows better soft tissue visualization, provides more pertinent physiological information, and results in lower radiation exposure than do fluoroscopically guided procedures. MRI guidance could become the method of choice for diagnostic cardiac catheterization in patients with congenital heart disease, and an important tool in interventional cardiac catheterization and radiofrequency ablation. MRI guided cardiopulmonary interventions, however, are challenging due to motion artefacts caused by the beating heart and respiration. Moreover, the tortuous anatomy of the right cardiac

chambers and pulmonary arteries makes monitoring of the passage of guide wires and endovascular catheters and the deployment of stents with MR imaging more difficult. Kuehne et al.<sup>32</sup> showed that interactive real-time MR imaging has the potential to guide stent placement in the pulmonary valve or main pulmonary artery and measure blood flow volume in the stent lumen immediately after the intervention. Several other authors have reported the use of MR imaging-compatible catheters and guide wires<sup>33,34</sup>. However, none of the investigated instruments contained properties required for complex cardiovascular interventions, such as (a) fast and reliable detection of the tip; (b) curvature of the shaft; and (c) material properties such as tip flexibility, torque and tracking ability, shaft strength, and flexibility. More work is needed to develop new MR imaging-compatible catheters and guide wires that are appropriate for use in cardiovascular interventions. In the future, research methods such as use of resonance circuits as fiducial markers should be investigated to provide tip and shaft detection without incorporating the risk of heating effects inherent with active catheter tracking methods<sup>35</sup>.

## References

- 1 Gatzoulis MA, Till JA, Somerville J et al. Mechanoelectrical interaction in tetralogy of Fallot. QRS prolongation relates to right ventricular size and predicts malignant ventricular arrhythmias and sudden death. *Circulation* 1995;92:231-7.
- 2 Jonsson H, Ivert T, Brodin LA. Echocardiographic findings in 83 patients 13-26 years after intracardiac repair of tetralogy of Fallot. *Eur Heart J* 1995; 16:1255-63.
- 3 Greenberg SB, Faerber EN, Balsara RK. Tetralogy of Fallot: diagnostic imaging after palliative and corrective surgery. *J Thorac Imaging* 1995;10:26-35.
- 4 Marx GR, Geva T. MRI and echocardiography in children: how do they compare? *Semin Roentgenol* 1998;33:281-92.
- 5 Hartnell GG, Notarianni M. MRI and echocardiography: how do they compare in adults? *Semin Roentgenol* 1998;33:252-61.
- 6 de Roos A, Doornbos J, van der Wall EE et al. Magnetic resonance of the heart and great vessels. *Nat Med* 1995;1:711-3.
- 7 Ferencz C, Rubin JD, McCarter RJ et al. Congenital heart disease: prevalence at livebirth. The Baltimore-Washington Infant Study. *Am J Epidemiol* 1985;121:31-36.
- 8 Pattynama PM, Lamb HJ, Van der Velde EA et al. Left ventricular measurements with cine and spin-echo MR imaging: a study of reproducibility with variance component analysis. *Radiology* 1993;187:261-8.
- 9 Pattynama PM, Lamb HJ, Van der Velde EA et al. Reproducibility of MRI-derived measurements of right ventricular volumes and myocardial mass. *Magn Reson Imaging* 1995;13:53-63.
- 10 Mogelvang J, Stubgaard M, Thomsen C et al. valuation of right ventricular volumes measured by magnetic resonance imaging. *Eur Heart J* 1988;9:529-33.

- 11 Markiewicz W, Sechtem U, Higgins CB. Evaluation of the right ventricle by magnetic resonance imaging. *Am Heart J* 1987;113:8-15.
- 12 Helbing WA, Rebergen SA, Maliepaard C et al. Quantification of right ventricular function with magnetic resonance imaging in children with normal hearts and with congenital heart disease. *Am Heart J* 1995;130:828-37.
- 13 Dornier C, Somsen GA, Ivancevic MK, et al. Comparison between tagged MRI and standard cine MRI for evaluation of left ventricular ejection fraction. *Eur Radiol* 2004;14:1348-52.
- 14 Helbing WA, Niezen RA, Le Cessie S et al. Right ventricular diastolic function in children with pulmonary regurgitation after repair of tetralogy of Fallot: volumetric evaluation by magnetic resonance velocity mapping. *J Am Coll Cardiol* 1996;28:1827-35.
- 15 Gatzoulis MA, Clark AL, Cullen S et al. Right ventricular diastolic function 15 to 35 years after repair of tetralogy of Fallot. Restrictive physiology predicts superior exercise performance. *Circulation* 1995;91:1775-81.
- 16 Gatzoulis MA, Norgard G, Redington AN. Biventricular long axis function after repair of tetralogy of Fallot. *Pediatr Cardiol* 1998;19:128-32.
- 17 Mandinov L, Eberli FR, Seiler C et al. Diastolic heart failure. *Cardiovasc Res* 2000;45:813-25.
- 18 Redington AN, Penny D, Rigby ML et al. Antegrade diastolic pulmonary arterial flow as a marker of right ventricular restriction after complete repair of pulmonary atresia with intact septum and critical pulmonary valvar stenosis. *Cardiol Young* 1992;2:382-6.
- 19 Wintersperger BJ, Nikolaou K, Dietrich O, et al. Single breath-hold real-time cine MR imaging: improved temporal resolution using generalized autocalibrating partially parallel acquisition (GRAPPA) algorithm. *Eur Radiol* 2003;13:1931-36.

- 20 Oechslin EN, Harrison DA, Harris L et al. Reoperation in adults with repair of tetralogy of fallot: indications and outcomes. *J Thorac Cardiovasc Surg* 1999;118:245-51.
- 21 d'Udekem Y, Rubay J, Shango-Lody P et al. Late homograft valve insertion after transannular patch repair of tetralogy of Fallot. *J Heart Valve Dis* 1998;7:450-4.
- 22 Davlouros PA, Kilner PJ, Hornung TS et al. Right ventricular function in adults with repaired tetralogy of Fallot assessed with cardiovascular magnetic resonance imaging: detrimental role of right ventricular outflow aneurysms or akinesia and adverse right-to-left ventricular interaction. *J Am Coll Cardiol* 2002;40:2044-52.
- 23 d'Udekem Y, Ovaert C, Grandjean F et al. Tetralogy of Fallot: transannular and right ventricular patching equally affect late functional status. *Circulation* 2000;102:116-22.
- 24 Therrien J, Siu SC, Harris L et al. Impact of pulmonary valve replacement on arrhythmia propensity late after repair of tetralogy of fallot. *Circulation* 2001;103:2489-2494.
- 25 Harrison DA, Harris L, Siu SC et al. Sustained ventricular tachycardia in adult patients late after repair of tetralogy of Fallot. *J Am Coll Cardiol* 1997;30:1368-73.
- 26 Discigil B, Dearani JA, Puga FJ et al. Late pulmonary valve replacement after repair of tetralogy of Fallot. *J Thorac Cardiovasc Surg* 2001;121:344-51.
- 27 Vliegen HW, Van Straten A, de Roos A et al. Magnetic resonance imaging to assess the hemodynamic effects of pulmonary valve replacement in adults late after repair of tetralogy of fallot. *Circulation* 2002;106:1703-7.
- 28 Niwaya K, Knott-Craig CJ, Lane MM et al. Cryopreserved homograft valves in the pulmonary position: risk analysis for intermediate-term failure. *J Thorac Cardiovasc Surg* 1999;117:141-146.



- 29 Van Straten A., Vliegen HW, Hazekamp MG, et al. Follow-up of right ventricular function after pulmonary valve replacement in adult tetralogy of Fallot patients. *Radiology* 2004;233:824-9.
- 30 Van Straten A, Vliegen HW, Lamb HJ, et al. Time course of diastolic and systolic function improvement after pulmonary valve replacement in adult patients with tetralogy of Fallot. *J Am Coll Cardiol.* 2005;46:1559-64.
- 31 Razavi R, Hill DL, Keevil SF et al. Cardiac catheterisation guided by MRI in children and adults with congenital heart disease. *Lancet* 2003;362:1877-82.
- 32 Kuehne T, Saeed M, Higgins CB et al. Endovascular stents in pulmonary valve and artery in swine: feasibility study of MR imaging-guided deployment and postinterventional assessment. *Radiology* 2003;226:475-81.
- 33 Bakker CJ, Smits HF, Bos C et al. MR-guided balloon angioplasty: in vitro demonstration of the potential of MRI for guiding, monitoring, and evaluating endovascular interventions. *J Magn Reson Imaging* 1998;8:245-50.
- 34 Yang X, Atalar E, Zerhouni EA. Intravascular MR imaging and intravascular MR-guided interventions. *Int J Cardiovasc Intervent* 1999;2:85-96.
- 35 Wong EY, Zhang Q, Duerk JL et al. An optical system for wireless detuning of parallel resonant circuits. *J Magn Reson Imaging* 2000;12:632-638.



