



Universiteit  
Leiden  
The Netherlands

## **MRI for evaluation of gastric physiology**

Zwart, I.M. de

### **Citation**

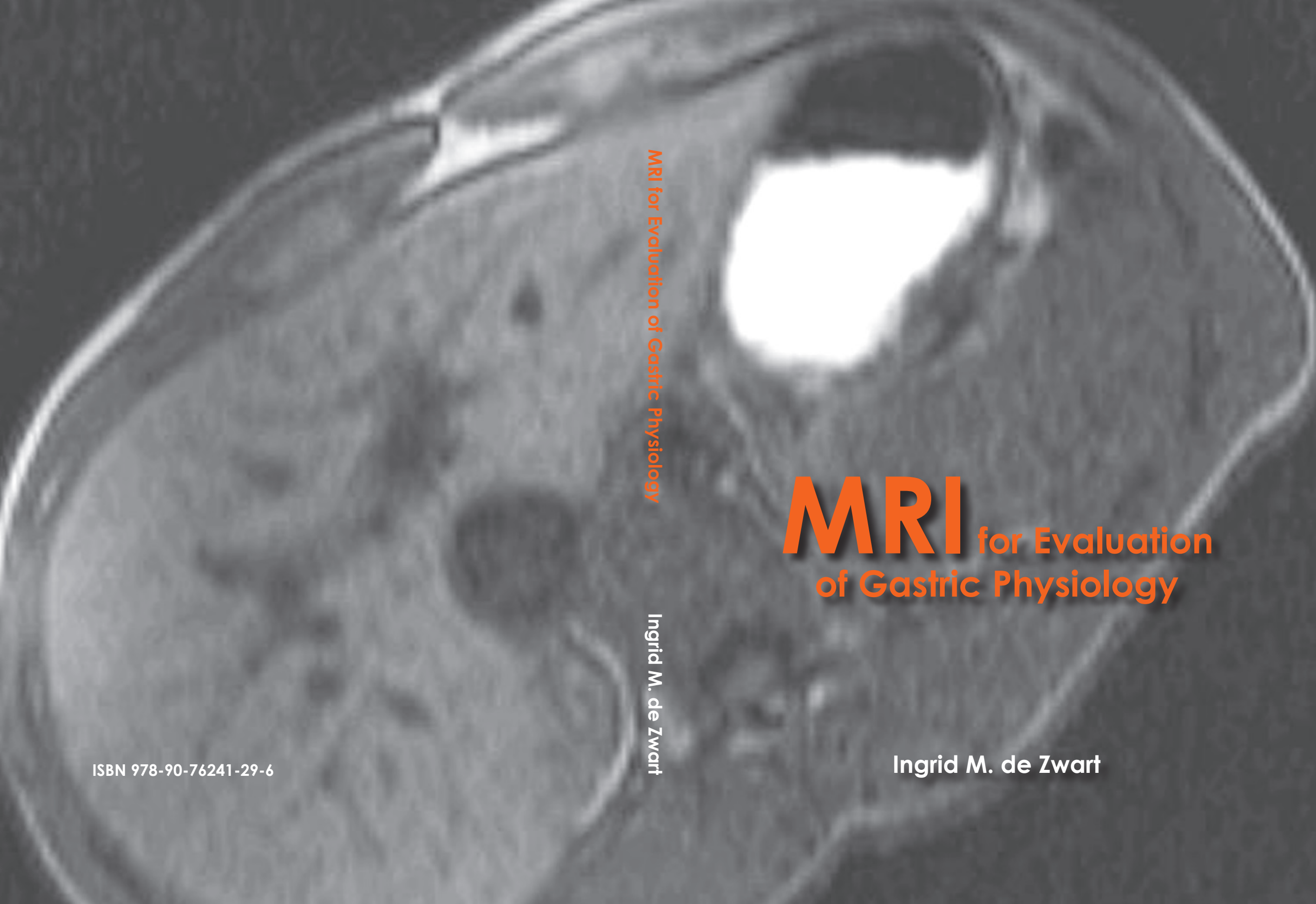
Zwart, I. M. de. (2010, November 2). *MRI for evaluation of gastric physiology*. Retrieved from <https://hdl.handle.net/1887/16093>

Version: Corrected Publisher's Version

License: [Licence agreement concerning inclusion of doctoral thesis in the Institutional Repository of the University of Leiden](#)

Downloaded from: <https://hdl.handle.net/1887/16093>

**Note:** To cite this publication please use the final published version (if applicable).



MRI for Evaluation of Gastric Physiology

Ingrid M. de Zwart

# MRI for Evaluation of Gastric Physiology

Ingrid M. de Zwart

ISBN 978-90-76241-29-6