



Universiteit  
Leiden

The Netherlands

## **Role of fibroblast-like synoviocytes in cartilage degradation during rheumatoid arthritis**

Tolboom, Tanja

### **Citation**

Tolboom, T. (2005, October 20). *Role of fibroblast-like synoviocytes in cartilage degradation during rheumatoid arthritis*. Retrieved from <https://hdl.handle.net/1887/4296>

Version: Corrected Publisher's Version

License: [Licence agreement concerning inclusion of doctoral thesis in the Institutional Repository of the University of Leiden](#)

Downloaded from: <https://hdl.handle.net/1887/4296>

**Note:** To cite this publication please use the final published version (if applicable).

**Fibroblast-like synoviocytes from patients with rheumatoid arthritis are more sensitive to apoptosis induced by the viral protein, apoptin, than fibroblast-like synoviocytes from trauma patients**

*Tanja C.A. Tolboom, Ying-Hui Zhang, Niek V. Henriquez, Rob G.H.H. Nelissen, Rene E.M. Toes, Mathieu H.M. Noteborn, Tom W.J. Huizinga*

(Submitted for publication)



# Fibroblast-like synoviocytes from patients with rheumatoid arthritis are more sensitive to apoptosis induced by the viral protein, apoptin, than fibroblast-like synoviocytes from trauma patients

Tanja C.A. Tolboom, Ying-Hui Zhang, Niek V. Henriquez, Rob G.H.H. Nelissen, Rene E.M. Toes, Mathieu H.M. Noteborn, Tom W.J. Huizinga

## Abstract

*Objective.* Fibroblast-like synoviocytes (FLS) from patients with rheumatoid arthritis (RA) show characteristics of transformation. Because the chicken anemia virus protein, apoptin, induces apoptosis solely in transformed cells, it was investigated whether FLS from patients were more sensitive to apoptin-induced apoptosis than FLS from normal joints obtained from trauma patients.

*Methods.* FLS were transduced with maltose-binding protein (MBP)-apoptin recombinant protein or MBP as a control protein by microinjection. After 24 hours, cells were fixed and stained with immunofluorescence to detect apoptin or MBP and the number of dead cells was assessed. Furthermore, phosphorylation of apoptin was analysed in FLS from patients with RA and from trauma patients by in vitro kinase assay.

*Results.* FLS from patients with RA were significantly more sensitive to apoptin-induced apoptosis than FLS from trauma patients ( $p=0.0263$ ). Furthermore, MBP-apoptin induced more apoptosis than MBP in RA FLS ( $p=0.004$ ). No phosphorylation of apoptin was observed in FLS from patients with RA.

*Discussion.* FLS from patients with RA are more sensitive to apoptin-induced apoptosis than normal FLS, which is consistent with a transformed phenotype of these cells. However, given the lack of phosphorylation of apoptin in RA FLS the mechanism of action of apoptin seems to differ between tumour cells and RA FLS.

This study indicates that apoptin may help to identify a new therapeutic pathway against hyperplasia of the synovium and joint destruction in RA.

## Introduction

A normal synovial joint like a knee or a hip is composed of two opposing bones, connected by the capsule. The inside of this capsule comprises the synovial membrane, which is composed of a lining layer of 1 or 2 cell layers and a sublining stroma, with stromal cells and blood vessels.

The most common disease of the synovium, rheumatoid arthritis (RA) is a chronic inflammatory disease characterised by synovitis, hyperplasia of the synovial lining and degradation of cartilage and bone. Degradation of cartilage is thought to be mediated by fibroblast-like synoviocytes (FLS) of the lining layer and many data point to the fact that these cells show a transformed phenotype. FLS from RA joints exhibit an anchorage independent growth pattern in soft agarose (1) and show invasive behaviour in vitro and in vivo (2;3). Furthermore, these FLS (but not their normal counterparts) express oncogenes (4), like Ras and c-myc and matrix metalloproteinases for cartilage destruction (3). Because hyperplasia is caused by an imbalance between proliferation and apoptosis, much effort has been put on delineating the mechanism underlying these features in RA FLS. However, at this moment it is not clear whether the cells show increased proliferation or decreased apoptosis or both. Some studies show an increase in the rate of proliferation of FLS in RA as compared to Osteoarthritis (OA) or normal controls (5), but other studies find no difference in the rate of proliferation in either RA or normal FLS (6). Similar controversies hold true for apoptosis. Some studies report an increased rate of apoptosis in RA synovium (7-9), and that RA FLS are susceptible to Fas-mediated apoptosis (10). However, these cells are mainly found in the sublining layer of the synovium (8). In contrast, other studies report that the lining layer cells are resistant to Fas-induced apoptosis (11) and show up-regulation of the protein, Bcl-2, which inhibits one of the apoptosis regulating pathways (12).

Given the fact that inflammation leads to pain and to loss of function of joints and is easy to measure, therapies for RA are primarily focused on the inflammation of the joint rather than on maintaining its normal structure. Degradation of cartilage by FLS leads to loss of structure in the joint and can also continue in the absence of detectable inflammation. Thus, therapies targeting the hyperplasia of FLS and the subsequent formation of pannus tissue leading to anatomical malformation may present a welcome expansion of the therapeutic options in destructive joint diseases.

Apoptin, a chicken anemia virus protein, has been shown to induce apoptosis specifically in transformed cells and tumours but not in normal cells (13). Over-

expression of apoptin in human tumour cell lines leads to p53 independent cell death (14). Moreover, expression of Bcl-2, which normally inhibits apoptosis, has been shown to enhance apoptin-induced apoptosis (15).

Since apoptin induces apoptosis specifically in transformed cell lines and since FLS exhibit features of a transformed phenotype, the effect of intracellular injection of apoptin in RA FLS compared to the effect of intracellular injection of normal FLS was tested.

## Materials and methods

### *Patients and synovial tissue*

Synovial tissue was obtained from patients with RA during joint replacement surgery. All patients met the criteria of the American college of Rheumatology. As a control synovial tissue from patients without inflammatory joint disease was obtained during joint replacement surgery after femoral fracture. Tissue was harvested by an orthopaedic surgeon and collected in sterile phosphate buffered saline (PBS). Connective tissue and fat were removed and tissue was digested with collagenase IA (1 mg/ml; Sigma, St Louis, MO, USA) for at least two hours at 37 °C. Cells were separated from the tissue using a 200 µm filter (NPBI, Emmer-Compascuum, The Netherlands) and cultured in 75 cm<sup>2</sup> culture flasks (Cellstar, Greiner, Alphen aan de Rijn, The Netherlands) with Iscove's modified Dulbecco's medium (IMDM; Biowittaker, Verviers, Belgium) supplemented with glutamax (GibcoBRL, Paisley, UK), penicillin and streptomycin

Table 1 Patient characteristics.

Patient no.	Male/ Female	Age	Joint	Rheumatoid Factor
RA053	F	73	Elbow	+
RA055	F	37	Elbow	
RA077	F	60	Knee	+
RA088	M	60	Ankle	+
RA103	F	29	Elbow	+
FR007	F	85	Hip	
FR008	F	66	Hip	
FR013	M	53	Hip	
FR051	F	72	Hip	
FR054	M	46	Hip	

cin (Boehringer Mannheim, Germany), and 10% fetal calf serum (FCS; Gibco - BRL, Paisley, UK) at 37 °C and 5% CO<sub>2</sub>.

After the cells reached confluence they were detached with 0.25% trypsin and

split in a 1:3 ratio. FLS of passage 4 or 6 were used for all experiments. Light microscopy and Giemsa staining indicated that more than 95% of cells were FLS.

### ***Expression and purification of proteins***

The cloning, expression, and purification of recombinant maltose-binding protein (MBP)-Apoptin protein, its control protein MBP and recombinant His-tagged Apoptin protein have been described previously (16;17). In short, the construct pMalTB-VP3 encodes MBP-Apoptin, an N-terminal fusion of MBP to Apoptin, separated by a flexible linker encoding 10 asparagine residues. The construct pMalTB encodes MBP alone. Both proteins were expressed in *Escherichia coli* and purified by standard methods. The purity of the proteins were generally > 95%. In the case of His-Apoptin purification was performed on NiNTA columns as described (17).

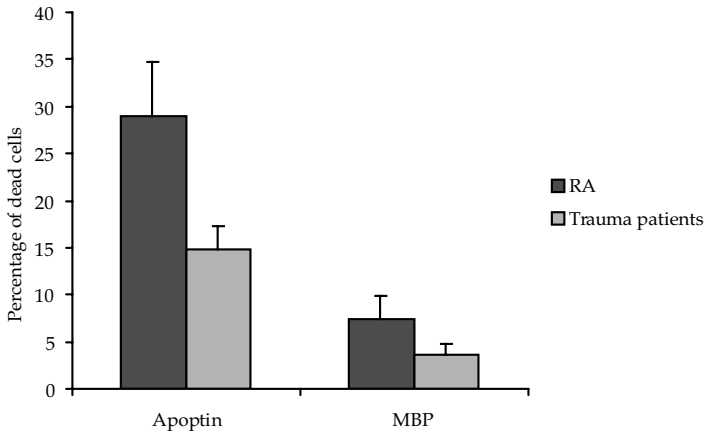
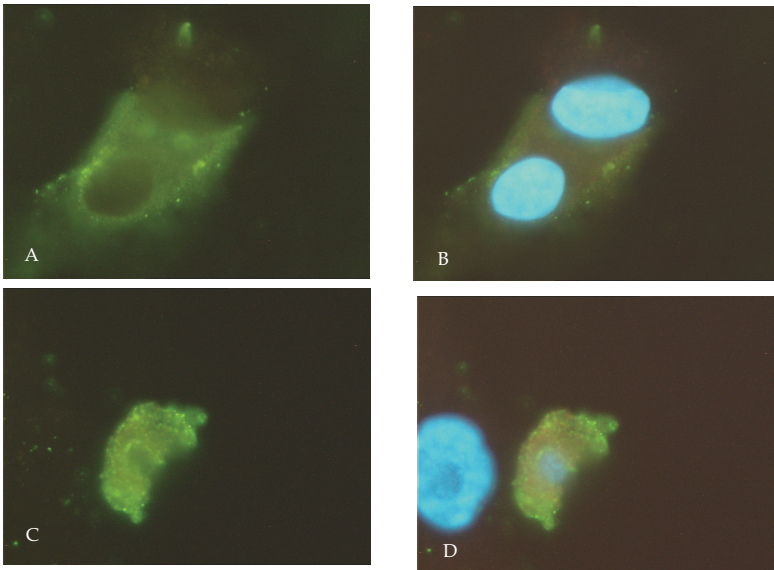
### ***Transduction of cells with apoptin protein***

On the day before transduction, the cells were plated on uncoated 35-mm glass bottom microwell dishes (Mattek, Ashland, USA) at a density of 100,000 cells. During microinjection, cells were incubated in RPMI 1640 medium (25 mM HEPES, pH 7.2, 5% fetal calf serum, penicillin, and streptomycin) at 37 °C. Cells were returned to IMDM medium immediately after microinjection. Microinjection was performed with 0.5- $\mu$ m microneedles (sterile femtotips II; Eppendorf) under an inverted microscope (Axiovert 135 TV; Zeiss), equipped with a programmable microinjector (IM 300; Narishige Co.) and a joystick hydraulic micromanipulator (MMO-202; Narishige Co.). Fluorescein-labeled, cross-linked MBP-Apoptin (3 mg/ml, in PBS) was co-microinjected with lysine-fixable rhodamine-dextran (Molecular Probes) that was used as a marker to trace injected cells. Directly prior to injection, protein samples were filtered over 0.22  $\mu$ m microfilter-tube (millipore) or at 15,000  $\times$  g centrifugation for 15 min. Microinjection was performed under the condition of injection pressure of 0.5 to 1.0 pounds/square inch, and an injection time of 0.2 to 0.5 s. For each experiment, 100 cells were injected per dish. After 24 hours of incubation at 37 °C and 5% CO<sub>2</sub> the cells were washed with PBS, fixed with 80% acetone (in H<sub>2</sub>O) for 10 minutes and dried in air. The fixed cells were kept at -20 °C until staining.

### ***Immunofluorescent staining of cells***

After transduction and fixation, cells were stained for detection of MBP or apoptin (VP3c; 16). Cells were washed three times with PBS containing 0.05% Tween-20 (Sigma, Steinheim, Germany) and incubated with rabbit anti-MBP (Santa Cruz, Heerhugowaard, The Netherlands) or with rabbit anti-VP3c in PBS with 5% normal goat serum for 1 hour. And subsequently incubated with the second antibody FITC-labeled goat anti-rabbit (Santa Cruz, Heerhugow

aard, The Netherlands) for 30 minutes. The nucleus of the immunofluorescent stained cells was visualised with DAPI/DABCO/Glycerol solution containing



**Figure 1** Examples of a live (A and B) and apoptotic (C and D) cell microinjected with MBP-apoptin protein. MBP-apoptin protein is shown in green (A and C) and B and D shows a merge picture of apoptin and DAPI, staining nuclear intact DNA strongly (B) or apoptotic DNA weakly (D). E: Mean percentage of apoptotic cells 24 hours after injection of MBP-apoptin protein or MBP protein. Dark gray bars show the percentage of dead cells for FLS from patients with RA, light gray bars show the percentage of dead cells for FLS from trauma patients.

100 mM Tris-HCL, 2.3% 1,4-diazabicyclo-(2,2,2)-octane (Dabco) and 10 µg/ml 4',6-Diamidino-2-pheyindole (DAPI) (Sigma, St Lois, USA). Injected cells were counted by fluorescence microscopy and cell-death was assessed by cellular and/or nuclear morphology.

### ***In vitro kinase assay***

The assay was performed essentially as described (17). Briefly, 10-cm dishes containing FLS were cultured in IMDM medium and cells harvested at 80% density by scraping. Pellets were rinsed 1x in PBS and then snap-frozen in liquid N<sub>2</sub> for later use.

Pellets were lysed on ice with in vitro-kinase buffer (IVKB) (20 mM Hepes 7.4, 20 mM MgCl<sub>2</sub>, 150 mM NaCl, trypsin inhibitor, pepstatin, leupeptin, aprotinin, PMSF1, β-glycerol phosphate, sodium orthovanadate, and sodium fluoride, at standard concentrations, as well as the phosphatase inhibitor cocktails 1 and 2 [Sigma]). Protein concentrations of cell lysates were determined by Bradford assay and 15 µg protein was incubated with 2 µg recombinant His-tagged apoptin and ATP. The labelled protein was precipitated using NiNTA-agarose. The precipitate was run on an SDS-PAGE gel followed by Western blotting. A sample of the lysate alone was also put on gel to determine "total" kinase activity. Western blotting was performed using Bio-Rad equipment as recommended by the manufacturer. Phosphorylated Apoptin was detected using a specific polyclonal anti-phospho-antibody specifically recognising phosphorylated apoptin (17). Equal loading was controlled using a monoclonal anti-apoptin antibody.

### ***Statistical analysis***

Statistical analysis was performed with SPSS version 9.5. Statistical differences in apoptosis between RA and normal FLS and between transduction with MBP-apoptin and MBP was determined by a Student's t-test.

## **Results**

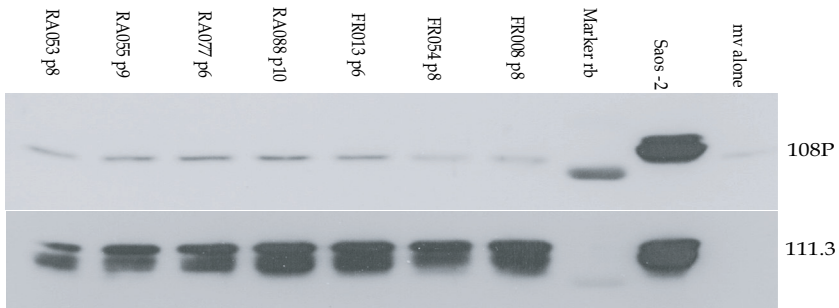
### ***Induction of apoptosis by apoptin protein in FLS***

FLS of 5 patients with RA and 5 trauma patients were tested for their ability to undergo apoptosis induced by apoptin. Patient characteristics are shown in table 1. In each case, 100 cells were transduced with MBP-apoptin protein or MBP control protein by means of microinjection. 24 hours later cells were fixed, stained and subsequently analysed for apoptosis by immunofluorescent staining. As shown in figure 1A-D, apoptin induced apoptosis in 29% ± 5.8 (mean ± SEM) in the injected cells from patients with RA, while only 14.8% ± 2.4 of the injected FLS from traumapatients died (p=0.0263). Cells injected with

the control protein MBP did undergo apoptosis much less, ruling out the possibility that apoptosis was induced by the transduction method ( $29\% \pm 5.753$  vs.  $7.4\% \pm 2.46$ ; mean  $\pm$  SEM for RA apoptin vs. RA MBP respectively;  $p=0.009$ ; figure 1E).

### *Phosphorylation of apoptin protein in FLS*

Because in tumour cell lines apoptin is phosphorylated at a specific position, namely threonine at position 108 and this phosphorylation was shown to be important for its mode of action in these cells (17), we also investigated the phosphorylation status of apoptin in RA FLS vs trauma FLS. However, despite containing considerable kinase activity as determined by autophosphorylation (data not shown) in neither the RA- nor the trauma FLS preparations could apoptin phosphorylation ever be observed (see example in Figure 2). This suggests that apoptin induced apoptosis in RA FLS is mediated by a different mechanism than apoptosis induced in tumour cell lines.



**Figure 2** In vitro kinase assay. The ability of cell lysates from different patients to phosphorylate apoptin at amino acid residue 108 was measured as described in materials and methods. Saos-2 cells were tested as a positive control. mv alone: MBP-apoptin alone. Upper panel shows a Western blot of phosphorylated apoptin, the lower panel shows a loading control with MBP-apoptin.

## **Discussion**

The results in this study show that FLS from patients with RA were significantly more sensitive to apoptin-induced apoptosis than FLS from trauma patients. Because in previous reports it has been demonstrated that apoptin induces apoptosis only in tumour and other transformed cell lines (13-20) (see table 2), these data support the transformed nature of FLS in patients with RA. However, the mechanism of action of apoptin in FLS seems to be different from its mechanism of action in tumour cell lines, given the fact that apoptin is not phosphorylated at amino acid residue 108 in RA FLS as is the case in tumour cell lines. Strikingly, Danen-van Oorschot et al. (21) have reported that Apoptin

*- Apoptin sensitivity of fibroblast-like synoviocytes from RA patients -*

contains two different domains that have the ability to induce apoptosis independently. Only one domain seems to be regulated by phosphorylation. Therefore, it seems likely that only one of the Apoptin apoptotic domains is activated in RA FLS. A possibility for further research may be to explore the mechanism by investigating whether e.g. caspases and death effector domain-associated factor (DEDAF) (which are involved in apoptin-induced apoptosis) (22;23) are also involved in RA FLS.

**Table 2** Apoptin sensitivity of several human cell lines For references see text.

<b>Cell line</b>	<b>Apoptin sensitive</b>	<b>Cell type</b>
VH10	-	Fibroblast
VH10-SV40LT	+	Transformed fibroblast
FSK	-	Keratinocyte
SVK14	+	Transformed keratinocyte
HaCaT	+	Transformed epithelial cell
Saos-2	+	Osteosarcoma
U2OS	+	Osteosarcoma
NW-18	+	Transformed fibroblast
SCC-15	+	Transformed epithelial cell
Hep3B	+	Hepatoma
G401	+	Kidney rhabdoid tumor
HepG2	+	Hepatoma
DOHH-2	+	B lymphoma
Jobo-0	+	Epstein-Barr-virus immortalized B cell
K562	+	Acute myeloid leukaemia
KG1	+	Acute myeloid leukaemia
HSMC	-	Smooth muscle cell
HUVEC	-	Endothelial cell
T cells	-	lymphocyte

In this study, cells were transduced with apoptin using microinjection. This is a difficult and laborious technique, but the amount of injected cells is known precisely. Another technique frequently used to transduce cells is via adenoviral vectors. However, with this technique it is difficult to determine exactly how many cells are transduced and furthermore when cells die it is very difficult to quantify whether these cells died from the procedure or from apoptin expression. In this study 100 cells were injected and after 24 hours the number of remaining live and dead cells were counted. The disadvantage of this method is, that only adherent apoptotic cells can be analysed and not apoptotic cells

detaching from the culture surface. Thus, if less than 100 cells are retrieved after 24 hours the effect of apoptin may be underestimated.

In conclusion, although few patients were tested so far, the chicken anaemia virus derived protein, apoptin, induces a significant degree of apoptosis in RA FLS, but not in normal FLS. Thus, further work using apoptin may help to identify (a) novel RA-specific pathway(s) which can be used as a therapeutic target. Such a novel RA-FLS targeted therapy could potentially be used to preserve the normal structure of the joint.

## References

1. Lafyatis R, Remmers EF, Roberts AB, Yocum DE, Sporn MB, Wilder RL. Anchorage-independent growth of synoviocytes from arthritic and normal joints. Stimulation by exogenous platelet-derived growth factor and inhibition by transforming growth factor-beta and retinoids. *J Clin Invest* 1989; 83:1267-1276.
2. Muller-Ladner U, Kriegsmann J, Franklin BN, Matsumoto S, Geiler T, Gay RE et al. Synovial fibroblasts of patients with rheumatoid arthritis attach to and invade normal human cartilage when engrafted into SCID mice. *Am J Pathol* 1996; 149:1607-1615.
3. Tolboom TC, Pieterman E, Van Der Laan WH, Toes RE, Huidekoper AL, Nelissen RG et al. Invasive properties of fibroblast-like synoviocytes: correlation with growth characteristics and expression of MMP-1, MMP-3, and MMP-10. *Ann Rheum Dis* 2002; 61:975-980.
4. Muller-Ladner U, Kriegsmann J, Gay RE, Gay S. Oncogenes in rheumatoid arthritis. *Rheum Dis Clin North Am* 1995; 21:675-690.
5. Qu Z, Garcia CH, O'Rourke LM, Planck SR, Kohli M, Rosenbaum JT. Local proliferation of fibroblast-like synoviocytes contributes to synovial hyperplasia. Results of proliferating cell nuclear antigen/cyclin, c-myc, and nucleolar organizer region staining. *Arthritis Rheum* 1994; 37:212-220.
6. Aicher WK, Heer AH, Trabandt A, Bridges SL, Jr., Schroeder HW, Jr., Stransky G et al. Overexpression of zinc-finger transcription factor Z-225/Egr-1 in synoviocytes from rheumatoid arthritis patients. *J Immunol* 1994; 152:5940-5948.
7. Firestein GS, Yeo M, Zvaifler NJ. Apoptosis in rheumatoid arthritis synovium. *J Clin Invest* 1995; 96:1631-1638.
8. Sugiyama M, Tsukazaki T, Yonekura A, Matsuzaki S, Yamashita S, Iwasaki K. Localisation of apoptosis and expression of apoptosis related proteins in the synovium of patients with rheumatoid arthritis. *Ann Rheum Dis* 1996; 55:442-449.

9. Ceponis A, Hietanen J, Tamulaitiene M, Partsch G, Patiala H, Konttinen YT. A comparative quantitative morphometric study of cell apoptosis in synovial membranes in psoriatic, reactive and rheumatoid arthritis. *Rheumatology (Oxford)* 1999; 38:431-440.
10. Nakajima T, Aono H, Hasunuma T, Yamamoto K, Shirai T, Hirohata K et al. Apoptosis and functional Fas antigen in rheumatoid arthritis synoviocytes. *Arthritis Rheum* 1995; 38:485-491.
11. Kobayashi T, Okamoto K, Kobata T, Hasumuna T, Nishioka K. Apoptin modulation as a novel therapeutic concept for the regulation of apoptosis in rheumatoid synoviocytes. *Curr Opin Rheumatol* 1999; 11:188-193.
12. Matsumoto S, Muller-Ladner U, Gay RE, Nishioka K, Gay S. Ultrastructural demonstration of apoptosis, Fas and Bcl-2 expression of rheumatoid synovial fibroblasts. *J Rheumatol* 1996; 23:1345-1352.
13. Danen-Van Oorschot, AAAM., Fischer DF, Grimbergen JM, Klein B, Zhuang S, Falkenburg JH et al. Apoptin induces apoptosis in human transformed and malignant cells but not in normal cells. *Proc Natl Acad Sci U S A* 1997; 94:5843-5847.
14. Zhuang SM, Shvarts A, van der Eb AJ, Jochemsen AG, Noteborn MHM. Apoptin, a protein derived from chicken anemia virus, induces p53-independent apoptosis in human osteosarcoma cells. *Cancer Res* 1995; 55:486-489.
15. Danen-Van Oorschot, AAAM, Zhang Y, Erkeland SJ, Fischer DF, van der Eb AJ, Noteborn MHM. The effect of Bcl-2 on Apoptin in 'normal' vs transformed human cells. *Leukemia* 1999; 13 Suppl 1:S75-S77.
16. Leliveld SR, Zhang YH, Rohn JL, Noteborn MHM, Abrahams JP. Apoptin induces tumor-specific apoptosis as a globular multimer. *J Biol Chem* 2003; 278:9042-9051.
17. Rohn JL, Zhang YH, Aalbers RI, Otto N, Den Hertog J, Henriquez NV et al. A tumor-specific kinase activity regulates the viral death protein Apoptin. *J Biol Chem* 2002; 277:50820-50827.
18. Noteborn MHM, Zhang YH, van der Eb AJ. Apoptin specifically causes apoptosis in tumor cells and after UV-treatment in untransformed cells from cancer-prone individuals: a review. *Mutat Res* 1998; 400:447-455.
19. Zhang YH, Abrahams PJ, van der Eb AJ, Noteborn MHM. The viral protein Apoptin induces apoptosis in UV-C-irradiated cells from individuals with various hereditary cancer-prone syndromes. *Cancer Res* 1999; 59:3010-3015.
20. Pietersen AM, van der Eb MM, Rademaker HJ, van den Wollenberg DJ, Rabelink MJ, Kuppen PJ et al. Specific tumor-cell killing with adenovirus vectors containing the apoptin gene. *Gene Ther* 1999; 6:882-892.
21. Danen-Van Oorschot AA, Zhang YH, Leliveld SR, Rohn JL, Seelen MC,

- Bolk MW et al. Importance of nuclear localization of apoptin for tumor-specific induction of apoptosis. *J Biol Chem.* 2003; 278:27729-27736.
22. Danen-van Oorschot AA, Voskamp P, Seelen MC, van Miltenburg MH, Bolk MW, Tait SW, et al. Human death effector domain-associated factor interacts with the viral apoptosis agonist Apoptin and exerts tumor-preferential cell killing. *Cell Death Differ.* 2004; 11:564-573.
23. Danen-van Oorschot AA, van der Eb AJ, Noteborn MH. The chicken anemia virus-derived protein apoptin requires activation of caspases for induction of apoptosis in human tumor cells. *J Virol.* 2000; 74:7072-7078.

