



Universiteit
Leiden
The Netherlands

Cortactin couples dynamic actin networks to cell migration and breast cancer

Rossum, Agnes Gerarda Sophia Helena van

Citation

Rossum, A. G. S. H. van. (2006, March 29). *Cortactin couples dynamic actin networks to cell migration and breast cancer*. Retrieved from <https://hdl.handle.net/1887/4349>

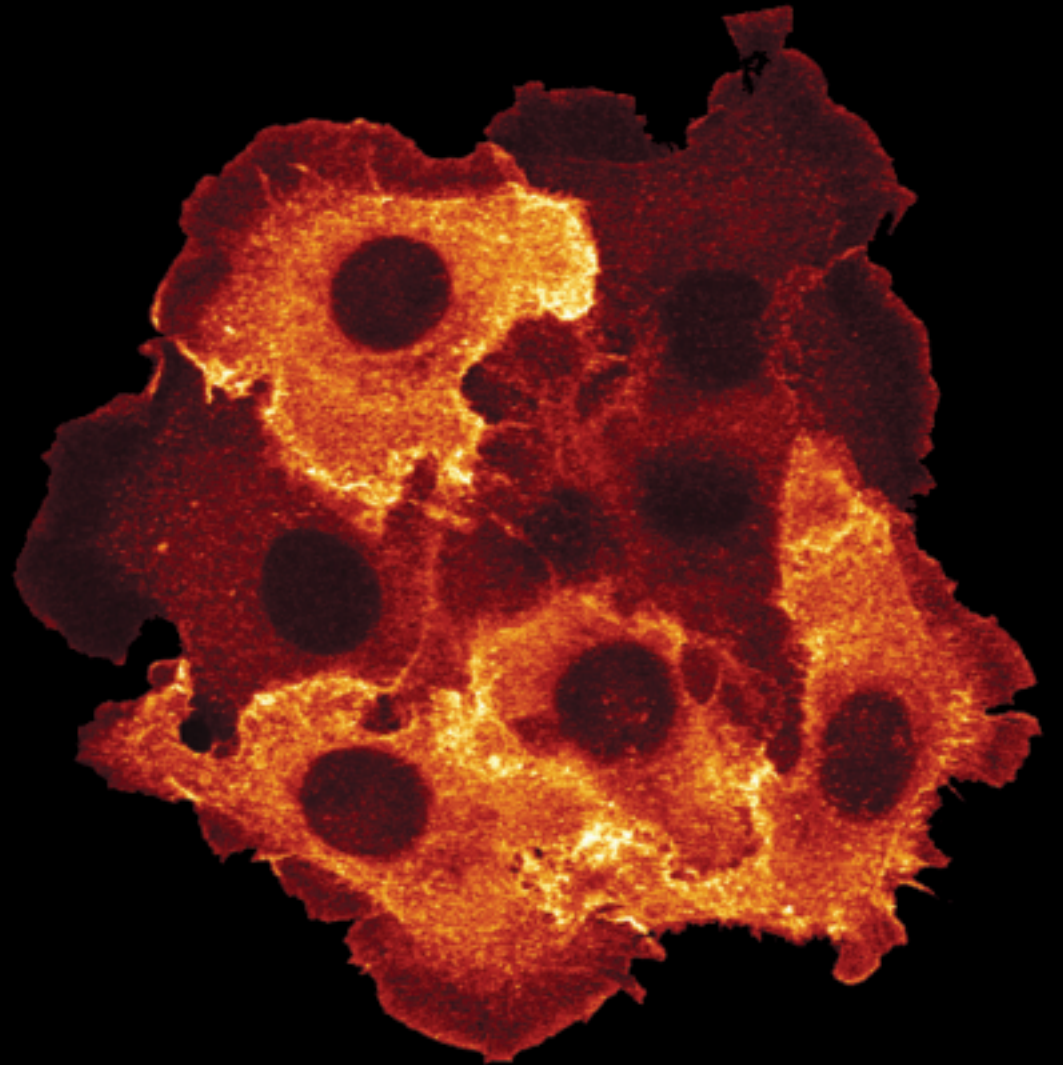
Version: Corrected Publisher's Version

License: [Licence agreement concerning inclusion of doctoral thesis in the Institutional Repository of the University of Leiden](#)

Downloaded from: <https://hdl.handle.net/1887/4349>

Note: To cite this publication please use the final published version (if applicable).

Cortactin couples dynamic actin networks to cell migration and breast cancer



Agnes van Rossum

Cortactin couples dynamic actin networks to cell migration and breast cancer

Agnes van Rossum

