

Cover Page



Universiteit Leiden



The handle <http://hdl.handle.net/1887/20399> holds various files of this Leiden University dissertation.

Author: Speetjens, Frank

Title: Anti-colorectal cancer immunity: control 'the force'!

Date: 2013-01-10

Chapter 2

Clinical impact of HLA class I expression in rectal cancer

Frank M. Speetjens^{1,*}, Elza C. de Bruin^{2,*}, Hans Morreau³,
Eliane C.M. Zeestraten¹, Hein Putter⁴, J.Han van Krieken⁵,
Maaïke M. van Buren¹, Monique van Velzen², N.Geeske Dekker-Ensink¹,
Cornelis J.H. van de Velde¹, Peter J.K. Kuppen¹

Departments of ¹Surgery, ²Clinical Oncology, ³Pathology and ⁴Medical Statistics and Bioinformatics, Leiden University Medical Center, Leiden, the Netherlands

⁵Department of Pathology, Radboud University Nijmegen Medical Center, Nijmegen, the Netherlands

*These authors contributed equally to this work

ABSTRACT

Purpose: To determine the clinical impact of Human Leukocyte Antigen (HLA) class I expression in irradiated and non-irradiated rectal carcinomas.

Experimental design: Tumor samples in tissue micro array format were collected from 1135 patients. HLA class I expression was assessed after immunohistochemical staining with two antibodies (HCA2 and HC10).

Results: Tumors were split into two groups: 1) tumors with >50% of tumor cells expressing HLA class I (high) and 2) tumors with \leq 50% of tumor cells expressing HLA class I (low). No difference in distribution or prognosis of HLA class I expression was found between irradiated and non-irradiated patients. Patients with low expression of HLA class I (15% of all patients) showed an independent significantly worse prognosis with regard to overall survival and disease free survival. HLA class I expression had no effect on cancer specific survival or recurrence free survival.

Conclusions: Down-regulation of HLA class I in rectal cancer is associated with poor prognosis. In contrast to our results, previous reports on HLA class I expression in colorectal cancer described a large population of patients with HLA class I negative tumors, having a good prognosis. This difference might be explained by the fact that a large proportion of HLA negative colon tumors are microsatellite instable (MSI). MSI tumors are associated with a better prognosis than microsatellite stable (MSS). As rectal tumors are mainly microsatellite stable (MSS), our results suggest that it is both, oncogenic pathway and HLA class I expression, that dictates patient's prognosis in colorectal cancer. Therefore, to prevent confounding in future prognostic analysis on the impact of HLA expression in colorectal tumors, separate analysis of MSI and MSS tumors should be performed.

INTRODUCTION

The immune system is thought to have an important function in controlling tumor growth and eliminating metastasizing tumor cells. Expression of Human Leukocyte Antigen (HLA) class I, presenting tumor-associated antigens on the tumor cell surface, is considered as a prerequisite for an effective T cell immune response¹. As a consequence, tumor cells with down-regulated HLA class I expression might escape this immune response, resulting in a selective outgrowth of these tumor cells.

Many studies described HLA class I expression in cancer²⁻⁵. Only limited studies have reported on the clinical impact of HLA class I expression in colorectal cancer with contrasting results. Some studies found no significant correlation between staining intensity and survival⁶⁻⁸, while others found a prognostic correlation between HLA expression and survival^{9;10}. The latter two studies had in common that total absence of HLA class I resulted in a favorable prognosis compared to patients with down-regulated expression HLA class I of tumor cells. Discrepancy between the two studies is, that one described high expression of HLA class I in tumor cells to result in a better prognosis compared to partial down-regulation of HLA class I⁹, while the other found the opposite¹⁰. These studies both analyzed a mixed population of colon and rectal cancer patients. For rectal cancer patients, the clinical impact of HLA class I expression is still unknown. Since HLA class I expression is often absent in microsatellite instable (MSI) tumors^{11;12} and MSI is more frequently observed in right-sided colon tumors than in rectal tumors¹³, results obtained from a mixed population of colon and rectal cancer patients might not hold true for rectal cancer patients.

Purpose of this study was to analyze the clinical relevance of HLA class I expression for rectal cancer patients. In addition to determine the impact of MSI on HLA class I expression, tumors most at risk for MSI i.e. HLA negative tumors were examined for MSI by determining the expression of the mismatch repair proteins, mismatch mutL homolog 1 (MLH1) and postmeiotic segregation increased 2 (PMS2), that are most absent in sporadic MSI tumors^{14;15}. Radiotherapy has been described recently to increase cell surface expression of Major Histocompatibility Complex (MHC) class I molecules in a murine colon adenocarcinoma cell line¹⁶. Therefore, our study also evaluated the effect of radiotherapy on HLA class I expression in rectal cancer patients. For these purposes, HLA class I expression was evaluated in a set of 1135 formalin-fixed paraffin-embedded rectal cancer specimens. The tumors studied were obtained at time of surgery from patients of a prospective multicenter trial, who were randomized between standardized pre-operative radiotherapy treatment followed by surgery or surgery alone¹⁷.

MATERIAL EN METHODS

Study population

Patients were obtained from the Dutch TME trial, a multicenter trial that evaluated total mesorectal excision (TME) surgery with or without preoperative radiotherapy (5x5 Gray)¹⁷. Radiotherapeutical, surgical and pathological procedures were standardized and quality-controlled^{17;18}. Tumor staging was determined using the Tumor Node Metastasis (TNM) classification¹⁹. Patients with the hereditary Lynch syndrome also known as hereditary non-polyposis colorectal cancer (HNPCC) were excluded from the TME trial. Sufficient formalin-fixed paraffin-embedded tumor material was available for 1135 Dutch patients. Three 2mm cores of each tumor sample were arrayed into tissue microarrays (TMA) as previously described²⁰.

Immunohistochemistry and microscopic analysis

TMA^s²⁰ were immunohistochemically stained for HLA class I using the mAb antibodies HCA2 and HC10 and the rabbit anti- β 2m polyclonal Ab (A 072; DAKO Cytomation, Glostrup, Denmark). The HCA2 and HC10 antibodies were applied in immunohistochemistry as hybridoma culture supernatant, kindly provided by Prof. J.J. Neefjes from the Netherlands Cancer Institute (Amsterdam, The Netherlands) The reactivity spectrum of HCA2 includes HLA-A (except HLA-A24), HLA-B73 and HLA-C molecules as well as HLA-E, HLA-F and HLA-G antigens²¹⁻²³. HC10 reacts with HLA-B and HLA-C molecules and HLA-A10, -A28, -A29, -A30, -A31, -A32 and -A33 heavy chains²³⁻²⁶. The immunohistochemical procedures are described in detail elsewhere¹⁰. All tumor specimens were stained simultaneously to avoid intra-assay variation. Microscopic analysis was assessed by two independent observers (M.M. v. B. and M. v. V.) in a blinded manner. HCA2, HC10 and β 2m stainings were scored in 6 categories. Essentially, the scoring was divided into quartiles but for tumors with less than 25% stained cells there was a distinction made between those with 6%–25% positively stained tumor cells, those with approximately 1%–5% positively stained cells and those with absolute no positively stained tumor cells.^{27;28} Where discrepancies arose between the staining of cores from the same tumor, an average of the scores was taken, with confirmation by 2 observers using a double-headed microscope with a consensus decision taken in all cases. Tissue stromal cells, normal epithelium or lymph follicles served as positive internal controls to ascertain the quality of the staining. Patients were excluded if stromal cells of tumor were not stained for HCA2 or HC10. Twenty five tumors with negative staining of the stromal cells for HCA2 were excluded. HC10 showed in all tumors staining of the stromal cells. Also TNM stage 0 patients, tumors lost due to technical failure and ineligible patients were excluded, leaving 1092 tumors in which HC10 and 1035 in which HCA2 could be evaluated. Combining

results for HCA2 and HC10 staining resulted in 1008 eligible stage I-IV rectal cancer patients for analyses of clinical impact of HLA class I expression.

Tumors negatively stained for HCA2 and/or HC10 were stained for mismatch repair proteins MLH1 and PMS2. MLH1 and PMS2 are deficient in sporadic MSI tumors. Therefore, expression of these proteins was used to differentiate between MSI and MSS rectal cancers. Tissue stromal cells, normal epithelium or lymph follicles served as positive internal controls when analyzing MLH1, PMS2 expression. Expression of MLH1 and PMS2 was scored positive if tumor cells showed expression and scored negative if tumor cells showed no expression of either MLH1 or PMS2 and tissue stromal cells did show expression, indicating respectively Microsatellite Stable (MSS) and Microsatellite Instable (MSI) tumors ¹⁴.

Statistical analyses

All analyses were performed with SPSS statistical software (version 12.0 for Windows, SPSS Inc, Chicago, USA). Mann-Whitney U, T-test and χ^2 -tests were used to compare variables. Kaplan-Meier analyses were performed to analyze patient survival. The entry date for the survival analyses was the time of surgery of the primary tumor. Events for time to local recurrence, distant recurrence, cancer specific survival, disease free and overall survival were defined as follows; from time of surgery to time of local disease relapse (for local recurrence), time of distant disease relapse (for distant recurrence), time of disease relapse or death by disease (for cancer specific survival), time of disease relapse or death (for disease free survival) and time of death, respectively, (for overall survival). Non-irradiated and irradiated patients were first separately analyzed in univariate analysis and second, variables with a p-value of ≤ 0.10 in the univariate analyses were subjected to a multivariate analysis. Multivariate analysis was performed on the whole group of irradiated and non-irradiated patients with the following variables: HLA class I, randomization for radiotherapy, TNM and circumferential margin. Cox' regression analyses were used to calculate Hazard Ratios (HR) with 95% confidence intervals (CI).

RESULTS

Scoring methods

Several methods are described to analyze HLA class I expression in cancer. The standard is defined by the International HLA and Immunogenetics Workshop (IHIW) ^{27;28}. A recent paper describing HLA class I expression in colorectal cancer used an adjusted form of this scoring method ⁹. Our scoring was primarily adapted from IWIH, i.e. division into quartiles, but for tumors with less than 25% stained cells a

distinction was made between those with 6%–25% positive tumor cells, those with approximately 1%–5% positive tumor cells and those with absolute no HLA class I positive stained tumor cells. After scoring and analyzing this method we found that patients in the groups with absolute no, 1%–5%, 6%–25% and 26%–50% HLA class I expression of tumor cells did not differ in prognosis but had a worse prognosis compared to patients with HLA class I expression in groups with 50–75% and >75% of tumor cells expressing HLA class I. Therefore, we distinguished two categories. These two categories were 1) 0%–50%; and 2) >50%–100% of tumor cells expressing HLA class I.

HCA-2 and HC10 staining in rectal cancer

Immunohistochemical staining with HCA2 and HC10 antibodies demonstrated strong positive membrane staining of stromal cells and tumor-infiltrating inflammatory cells, indicating the success of the staining. A total of 1035 and 1092 tumors were evaluated with HCA2 and HC10. 324 (65%) irradiated tumors and 312 (58%) non-irradiated tumors showed at least 50% of all tumor cells positive for HCA2. Staining with HC10 resulted in 403 (76%) irradiated tumors and 436 (77%) non-irradiated tumors that showed more than 50% positive tumor cells. Complete results are shown in Table 1. Representative examples of the immunohistochemical stainings of tumors are displayed in Figure 1A–F. These results show that about 35% of irradiated and 42% of non-irradiated patients showed in less than 50% of the tumor cells expression of HCA2. HC10 is expressed in less than 50% of the tumor cells in about 25% of both irradiated and non-irradiated rectal cancer patients.

Table 1. Most rectal tumors have high numbers of tumor cells positive for HCA2 or HC10.

		Irradiated patients	Non-irradiated patients
		N (%)	N (%)
HCA2	High	324 (65%)	312 (58%)
	Low	142 (28%)	174 (32%)
	Absence	31 (6.2%)	52 (9.7%)
HC10	High	403 (76%)	436 (77%)
	Low	117 (22%)	116 (21%)
	Absence	8 (1.5%)	12 (2.1%)

Numbers (N) of patients are indicated with percentages shown in parentheses, showing: expression of HCA2 and HC10 in more than 50% of the tumor cells (High), expression in less than 50% of the tumor cells (Low) and total absence (Absence).

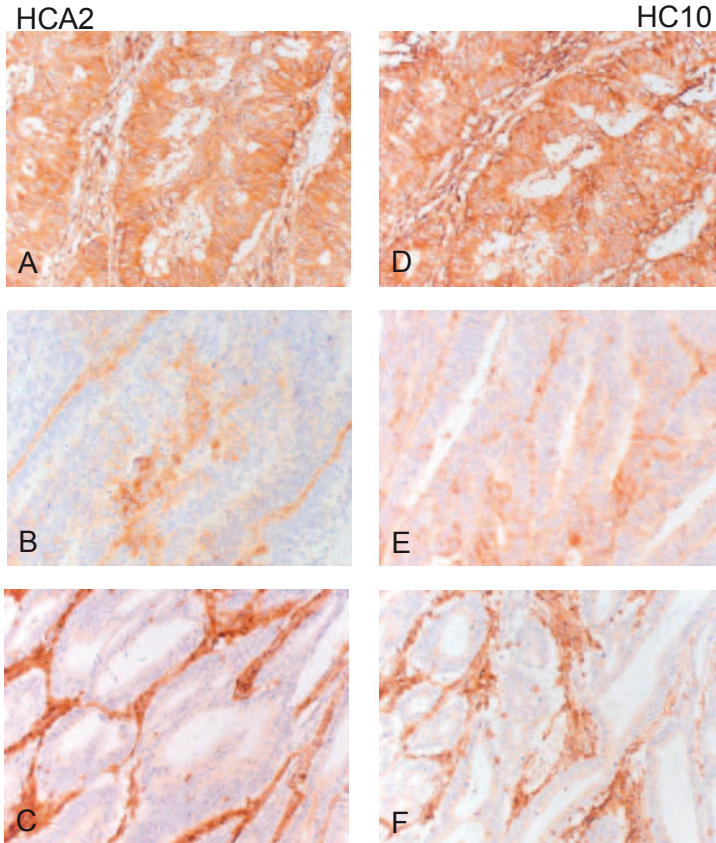


Figure 1. Examples of HCA2 and HC10 immunohistochemical staining of rectal tumors; (A-C) HCA2, (D-F) HC10 expression.

(A, D) expression of HLA class I in >50% tumor cells; (B, E) expression of HLA class I in <50% tumor cells; (C, F) epithelial cells show total absence for HCA2 or HC10 and only stromal and infiltrative cells show positive staining for HCA2 or HC10; Original magnification x20.

Analysis of HLA class I expression in rectal tumors

Together, the results obtained with HCA2 and HC10 are expected to reflect HLA class I expression in rectal cancer. In a group of 64 tumors it was studied whether an additional staining for β 2m would better define HLA class I expression. The results of the addition of β 2m to HCA2 and HC10 were comparable with those obtained with HCA2 and HC10, i.e. only 1 of 64 tumors was differently classified. Therefore, β 2m was not scored in the whole cohort and HLA class I expression was assessed by combining HCA2 and HC10.

A total of 406 (85%) irradiated and 445 (84%) non-irradiated tumors exhibited expression of at least one of the two markers showing >50% positive staining of all tumor cells (further referred to as 'the HLA class I high expression group'). A total of 70 (15%) irradiated and 87 (16%) non-irradiated tumors showed reduced numbers (\leq 50%) of HLA class I positive tumor cells. Only 3 (0.6%) irradiated tumors and 8

(1.5%) non-irradiated tumors showed total loss of HLA class I (negative for both HCA2 and HC10). Survival results of patients with total absence of HLA class I on tumor cells did not show significant difference from patients with reduced numbers of HLA class I positive tumor cells. Therefore, these groups were combined and will be further referred to as 'the HLA class I low expression group'. Complete results are shown in Table 2. The number of patients in the group of the HLA class I high expression group and the HLA class I low expression group was equally distributed between irradiated and non-irradiated tumors ($\chi^2=0.519$, $p=0.471$), indicating that irradiation had no effect on HLA class I expression in these patients.

Table 2. Expression of HLA class I in rectal cancer using HCA2 and HC10 antibodies.

	HCA2	HC10		HLA class I
		High (N)	Low + Absence (N)	N (%)
Irradiated	High (N)	270	37	406 (85%)
	Low + Absence (N)	99	70	70 (15%)
Non-irradiated	High (N)	277	32	445 (84%)
	Low + Absence (N)	136	87	87 (16%)

Expression of results of HCA2 and HC10 staining in a cross table for numbers (N) of irradiated and non-irradiated patients; expression of HCA2 and HC10 in more than 50% of the tumor cells (High) versus expression in less than 50% of the tumor cells (Low) is shown. A significant correlation was noted between HCA2 and HC10 staining for both irradiated ($\chi^2 = 53.947$, $p<0.001$) and non-irradiated patients ($\chi^2 = 61.257$, $p<0.001$). The right side of the table displays HLA class I expression estimated on HCA2 and HC10 expression. A total of 406 (85%) irradiated and 445 (84%) non-irradiated tumors exhibited expression of at least one of the two markers showing >50% positive staining of all tumor cells. A total of 70 (15%) irradiated and 88 (16%) non-irradiated tumors showed reduced numbers ($\leq 50\%$) of HLA class I positive tumor cells. The number of patients in the group of the HLA class I high expression group and the HLA class I low expression group was equally distributed between irradiated and non-irradiated tumors ($\chi^2 = 0.519$, $p = 0.471$).

HLA class I negative cells and microsatellite instability

It has been described that a majority of MSI colorectal tumors do not express HLA class I, while only a minority of MSS tumors do not express HLA class I^{12;29}. Therefore, HLA class I negative rectal tumors are most at risk to be MSI tumors. To evaluate the numbers of sporadic MSI tumors in our study, HCA2 or HC10 negative tumors were analyzed for the expression of PMS2 and MLH1. PMS2 and MLH1 are mismatch repairs proteins that are most frequently absent in MSI sporadic tumors³⁰. Of the HLA class I negative tumors only one out of 11 tumors did not express PMS2 and MLH1. In the tumor group negative for only one of the two HLA class I markers, 2 of 81 tumors displayed no PMS2 and MLH1 staining. These results indicate that HLA class I down-regulation is not associated with MSI in rectal cancer and are in accordance with previous findings that only a very small minority of rectal tumors is MSI^{31;32}.

HLA class I expression and clinicopathological parameters

The relationship between HLA class I expression and patient/tumor characteristics was assessed (Table 3). HLA class I expression levels were distributed equally in non-irradiated and irradiated patients with regard to most clinical and pathological parameters. Three significant differences were observed. For the non-irradiated patients, significantly more men appeared in the HLA class I low expression group ($p=0.03$). The group of irradiated tumors with HLA class I low expression contained significantly more stage III and IV tumors ($p=0.01$) and also more patients with a tumor positive circumferential resection margin ($p=0.02$) when compared with tumors with high HLA class I expression.

Table 3. Clinicopathological characteristics of irradiated and non-irradiated patients with high or low numbers of HLA class I positive tumor cells.

	Non-irradiated patients		p-value	Irradiated patients		p-value
	High N=445	Low N=87		High N=406	Low N=70	
Gender						
Male, (%)	63	75	0.03	65	66	0.90
Age						
median years	65	68	0.32	65	65	0.99
TNM stage, (%)						
I	31	24	0.52	33	24	0.01
II	27	30		30	21	
III	36	38		32	40	
IV	5	8		5	14	
Circumferential margin						
Negative, (%)	83	77	0.28	86	74	0.02
Distant from anal verge, (%)						
≥ 10 cm	28	33	0.17	27	32	0.30
5-10 cm	41	31		46	36	
< 5 cm	31	36		27	32	
Operation type, (%)						
Low anterior resection	66	61	0.77	65	66	0.89
Abdomino-perineal resection	29	33		29	30	
Hartmann	5	6		6	4	

Number (N) of patients with expression of total HLA class I expression in more than 50% of the tumor cells (High) and expression in less than 50% of the tumor cells (Low).

* Statistical significant p-values are in bold

Expression of HLA class I and clinical prognosis

Because radiotherapy might influence local tumor recurrences¹⁷, irradiated and non-irradiated tumors were analyzed separately in order to evaluate the impact of HLA class I expression on tumor recurrence and patient survival. HLA class I expression was not related with distant or local recurrence rates. Patients with low expression of HLA class I had a worse overall survival and disease free survival when compared to patients with HLA class I high expression, irrespective of treatment (Fig 2; overall survival: $p=0.008$ and $p=0.01$; disease free survival: $p=0.01$, $p=0.006$ in irradiated and non-irradiated patients respectively). Irradiated patients with low HLA class I expression also had a worse cancer specific survival ($p=0.003$). For non-irradiated patients, HLA class I expression had no significant effect on cancer specific survival (Fig 2). All results of univariate analysis are

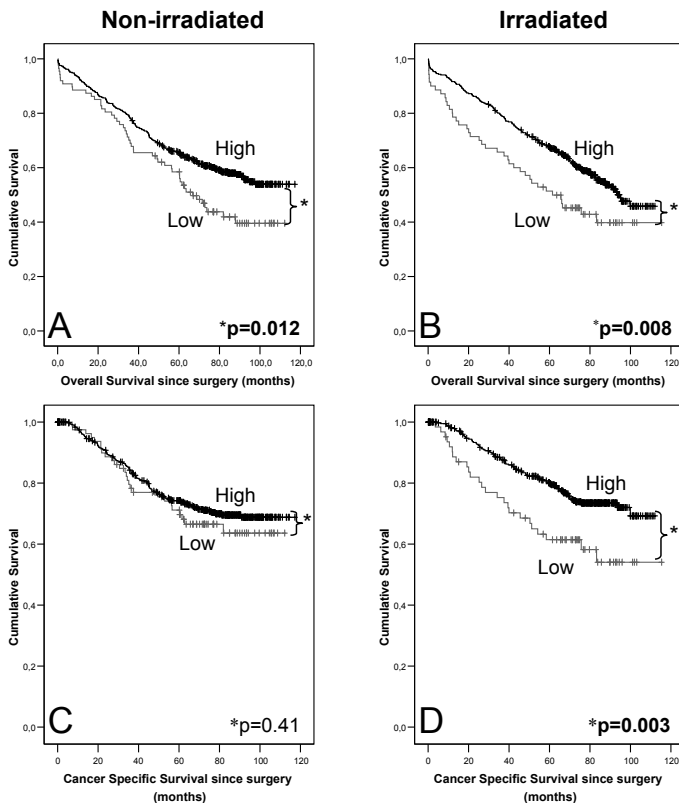


Figure 2. Examples of Kaplan-Meier curves showing overall survival and cancer specific survival for irradiated and non-irradiated patients.

Kaplan-Meier curves for overall survival (A, B) and cancer specific survival (C, D); curves show prognosis for non-irradiated (A, C) and irradiated patients (B, D) for HLA class I expression in more than 50% of the tumor cells (High) versus expression in less than 50% of the tumor cells (Low). P-value is based on univariate log rank analyses; statistical significant p-values are in bold.

shown in table 4. Univariate analysis showed a better outcome for overall survival and disease free survival in patients with high HLA class I expression.

Table 4. Both irradiated and non-irradiated patients with high expression of HLA class I have a better overall -, and disease free survival.

	Non-irradiated patients			Irradiated patients		
	High	Low	p-value	High	Low	p-value
Overall survival	65.5%	58.5%	0.012	67.5%	51.3%	0.008
Disease free survival	62.2%	53.5%	0.015	62.2%	48.3%	0.006
Cancer specific survival	74.3%	71.4%	0.41	80.1%	61.8%	0.003
Local recurrence	8.9%	13.7%	0.22	4.7%	3.2%	0.72
Distant recurrence	26.7%	28.7%	0.88	24.7%	29.3%	0.34

Survival and recurrence rates indicated in percentages after 5-years of follow-up for non-irradiated and irradiated patients for HLA class I expression in more than 50% of the tumor cells (High) versus expression in less than 50% of the tumor cells (Low). P-value is based on univariate log rank analyses for overall survival, disease free survival, cancer specific survival, local recurrence and distant recurrence.

* Statistical significant p-values are in bold

Multivariate analysis

Multivariate analysis was performed to identify factors with independent prognostic significance and to calculate hazard ratios (HR). Analyses included TNM, circumferential margin, randomization for pre-operative radiotherapy and HLA class I expression (low versus high HLA class I positive tumor cells) (table 5). Advanced pathological (TNM) stage and tumor positive circumferential resection margins retained their strength as independent prognostic factors in these survival analyses. HLA class I expression showed independent prognostic value for overall survival and disease free survival (HR: 1.3, p=0.042 and HR: 1.4, p=0.006 respectively), but not for cancer specific survival.

Table 5. Multivariate analysis confirms independent better overall -, and disease free survival for rectal cancer patients with high expression of HLA class I.

	Overall survival		Disease free survival		Cancer specific survival	
	HR (95% CI)	p-value	HR (95% CI)	p-value	HR (95% CI)	p-value
HLA						
High	1	0.042	1	0.006	1	0.653
Low	1.3 (1.0 – 1.6)		1.4 (1.1 – 1.8)		1.1 (0.8 – 1.5)	
Randomization						
TME	1	0.632	1	0.214	1	0.282
TME + RT	1 (0.8 – 1.2)		0.9 (0.7 – 1.1)		1.1 (0.9 – 1.5)	
TNM						
I	1		1		1	
II	2.2 (1.7 – 3.0)	<0.001	2.1 (1.6 – 2.8)	<0.001	3.5 (2.0-6.1)	<0.001
III	3.1 (2.4 – 4.1)	<0.001	3.1 (2.3 – 4.0)	<0.001	9.0 (5.4 – 14.9)	<0.001
IV	11.8 (8.1 – 17.1)	<0.001	--	--	50.3 (28.5 – 89.1)	<0.001
CRM						
negative	1	<0.001	1	<0.001	1	<0.001
positive	1.3 (1.1 – 1.5)		1.8 (1.4 – 2.2)		1.3 (1.1 – 1.5)	

Multivariate analysis for cancer specific, overall and disease free survival was performed to identify factors with independent prognostic significance and to calculate hazard ratios (HR) with 95% confidence intervals (CI) shown in parentheses. HLA class I expression in more than 50% of the tumor cells (High) versus expression in less than 50% of the tumor cells (Low); Total mesorectal excision (TME); Radiotherapy (RT); circumferential margin (CRM); p-value is based on Cox' regression analyses.

* Statistical significant p-values are in bold

DISCUSSION

We showed that rectal cancer patients from the HLA class I low expression group had an independent worse overall and disease free survival when compared to patients from the HLA class I high expression group. These data imply that expression of HLA class I in tumor cells predicts survival for rectal cancer patients. Although, significant better cancer specific survival for irradiated patients with high HLA class I was found in univariate analysis, the predictive value was lost in multivariate analysis. This observation can be explained by the fact that the group with low HLA class I included significant more stage III/IV and more patients with a positive circumferential margin compared to the group patients with high expression of HLA class I. Also no predictive value of HLA class I expression was found with regard to recurrence free survival of these patients. Therefore, we have no indications that support the notion that better survival of high HLA class I expression is due to the better antigen presenting function of these tumor cells, as has been suggested ^{9;10}.

In our study, no difference was found between irradiated and non-irradiated patients for HLA class I expression in tumor cells. It has been described that γ -irradiation induces enhanced peptide production and surface expression of MHC

class I in a colorectal mouse tumor cell line¹⁶. The fact that we could not find more HLA class I expression in irradiated tumors than in non-irradiated tumors indicates that radiotherapy does not induce HLA class I expression *in vivo*. Immunohistochemistry, however, is less suitable to measure subtle expression changes. Therefore additional research is required to determine the impact of radiotherapy on expression levels of HLA class I in human tumors.

In our study, more tumors showed HLA class I down-regulation after immunohistochemical staining using HCA2 than using HC10. This difference might be due to differences in reactivity spectrum of both antibodies (see 'materials and methods') or to the fact that HLA alleles are differently affected in colorectal cancer. If the latter is the case, our results suggest that HLA A alleles preferentially show down-regulation in rectal cancer.

Previous reports evaluated HLA class I expression in mixed patient populations of colon and rectal cancer patients^{9;10}. Watson et al also found in a large group of colorectal cancer patients that patients with low expression of HLA class I had a poor prognosis⁹. However, in contrast to our results, both studies described a substantial population of patients with tumors showing absence of HLA class I. In addition, they described that absence of HLA class I was associated with better prognosis compared to tumors expressing reduced numbers of HLA class I positive tumor cells. A relatively low number (1.1%) of HLA class I negative tumors was observed in our cohort of rectal cancer patients only. These patients showed no survival advantage when compared with patients with reduced numbers of HLA class I positive tumor cells. There are several explanations for the discrepancy in number of HLA class I negative tumors between the study of Watson et al. and ours, like different definition for HLA class I expression, differences in staining techniques, different patient cohort and number of MSI tumors.

We showed that tumors that do not stain HC10 can stain positive for HCA2 and thus are still able to present antigens. Therefore, an explanation for the differences with the results of Watson et al. is that we used strict criteria to classify tumors as HLA class I absent (defined as both HCA2 and HC10 negative) compared to Watson et al. (defined as negative for HC10 or negative for beta2M instead of negative for both). Another important explanation is that we examined HLA class I expression in a relative more homogeneous population of patients with a rectal tumor, while the other cohorts are more heterogeneous, consisting of both colon and rectal cancer. Although combining results from colon and rectum is generally accepted when predicting prognosis, this might influence results³³.

In colon cancer patients, approximately 50% of all proximal colon tumors show MSI, whereas almost all distal colon and rectal cancers are MSS tumors^{13;34}. Loss of HLA class I has been described in at least 60% of all sporadic right-sided MSI

colorectal tumors but in only 17% of MSS right-sided colon tumors loss of HLA class I is found ^{12;29}. In our cohort, only one out of 11 HLA negative tumors and two out of 81 tumors negative for HCA2 or HC10 did not express MLH1 and PMS2 and were thus likely MSI tumors. This indicates that rectal cancers are mainly MSS tumors, as has previously been described ³¹⁻³³. Of the multiple mechanisms that have been shown to underlie defects in HLA class I expression in colorectal cancer (mutations in the individual HLA class I genes, mutations in β 2-microglobulin (β 2m) ¹², and defects in components of the HLA class I-associated antigen processing machinery (APM) ^{12;35}), only the first will result in allele-specific aberrancies while the other affect total HLA class I expression and may result in total absence in a tumor cell.

These observations imply that a population of colorectal tumors with total absence of HLA class I probably contains a disproportionate large number of MSI tumors when compared with colorectal tumors expressing HLA class I. In addition, MSI colorectal tumors have a better prognosis when compared with MSS colorectal tumors ^{34;36}. Therefore, HLA class I negative tumors are more likely to be MSI tumors with a different clinical behavior compared to MSS colorectal tumors. It is likely that MSI influences prognostic results when considering HLA class I expression in colorectal tumors.

Our results show that HLA class I expression in rectal cancer affects patient's prognosis. We hypothesize that both, oncogenic pathway and HLA class I expression, dictates clinical tumor progression. We suggest that in future prognostic studies, analyzing expression of HLA class I or other biomarkers in colorectal cancer, impact of MSI should be considered.

REFERENCES

1. Wallich R, Bulbuc N, Hammerling GJ, Katzav S, Segal S, Feldman M. Abrogation of metastatic properties of tumour cells by de novo expression of H-2K antigens following H-2 gene transfection. *Nature* 1985;315:301-305.
2. Ogino T, Shigyo H, Ishii H et al. HLA class I antigen down-regulation in primary laryngeal squamous cell carcinoma lesions as a poor prognostic marker. *Cancer Res* 2006;66:9281-9289.
3. Vitale M, Pelusi G, Taroni B et al. HLA class I antigen down-regulation in primary ovary carcinoma lesions: association with disease stage. *Clin Cancer Res* 2005;11:67-72.
4. Ferris RL, Hunt JL, Ferrone S. Human leukocyte antigen (HLA) class I defects in head and neck cancer: molecular mechanisms and clinical significance. *Immunol Res* 2005;33:113-133.
5. Madjd Z, Spendlove I, Pinder SE, Ellis IO, Durrant LG. Total loss of MHC class I is an independent indicator of good prognosis in breast cancer. *Int J Cancer* 2005;117:248-255.
6. Benevolo M, Mottolese M, Piperno G et al. HLA-A, -B, -C expression in colon carcinoma mimics that of the normal colonic mucosa and is prognostically relevant. *Am J Surg Pathol* 2007;31:76-84.
7. Moller P, Momburg F, Koretz K et al. Influence of major histocompatibility complex class I and II antigens on survival in colorectal carcinoma. *Cancer Res* 1991;51:729-736.
8. Moller P, Koretz K, Schlag P, Momburg F. Frequency of abnormal expression of HLA-A,B,C and HLA-DR molecules, invariant chain, and LFA-3 (CD58) in colorectal carcinoma and its impact on tumor recurrence. *Int J Cancer Suppl* 1991;6:155-162.
9. Watson NF, Ramage JM, Madjd Z et al. Immunosurveillance is active in colorectal cancer as downregulation but not complete loss of MHC class I expression correlates with a poor prognosis. *Int J Cancer* 2006;118:6-10.
10. Menon AG, Morreau H, Tollenaar RA et al. Down-regulation of HLA-A expression correlates with a better prognosis in colorectal cancer patients. *Lab Invest* 2002;82:1725-1733.
11. Dierssen JW, de Miranda NF, Mulder A et al. High-resolution analysis of HLA class I alterations in colorectal cancer. *BMC Cancer* 2006;6:233.
12. Kloor M, Becker C, Benner A et al. Immunoselective pressure and human leukocyte antigen class I antigen machinery defects in microsatellite unstable colorectal cancers. *Cancer Res* 2005;65:6418-6424.
13. Soreide K, Janssen EA, Soiland H, Korner H, Baak JP. Microsatellite instability in colorectal cancer. *Br J Surg* 2006;93:395-406.
14. De Jong AE, Van Puijenbroek M, Hendriks Y et al. Microsatellite instability, immunohistochemistry, and additional PMS2 staining in suspected hereditary nonpolyposis colorectal cancer. *Clin Cancer Res* 2004;10:972-980.
15. Young J, Simms LA, Biden KG et al. Features of colorectal cancers with high-level microsatellite instability occurring in familial and sporadic settings: parallel pathways of tumorigenesis. *Am J Pathol* 2001;159:2107-2116.
16. Reits EA, Hodge JW, Herberts CA et al. Radiation modulates the peptide repertoire, enhances MHC class I expression, and induces successful antitumor immunotherapy. *J Exp Med* 2006;203:1259-1271.

17. Kapiteijn E, Marijnen CA, Nagtegaal ID et al. Preoperative radiotherapy combined with total mesorectal excision for resectable rectal cancer. *N Engl J Med* 2001;345:638-646.
18. Nagtegaal ID, Kranenbarg EK, Hermans J, van de Velde CJ, van Krieken JH. Pathology data in the central databases of multicenter randomized trials need to be based on pathology reports and controlled by trained quality managers. *J Clin Oncol* 2000;18:1771-1779.
19. Sobin LH, Fleming ID. TNM Classification of Malignant Tumors, fifth edition (1997). Union Internationale Contre le Cancer and the American Joint Committee on Cancer. *Cancer* 1997;80:1803-1804.
20. de Bruin EC, van de Velde CJ, van de PS et al. Prognostic value of apoptosis in rectal cancer patients of the dutch total mesorectal excision trial: radiotherapy is redundant in intrinsically high-apoptotic tumors. *Clin Cancer Res* 2006;12:6432-6436.
21. Seitz C, Uchanska-Ziegler B, Zank A, Ziegler A. The monoclonal antibody HCA2 recognises a broadly shared epitope on selected classical as well as several non-classical HLA class I molecules. *Mol Immunol* 1998;35:819-827.
22. Sernee MF, Ploegh HL, Schust DJ. Why certain antibodies cross-react with HLA-A and HLA-G: epitope mapping of two common MHC class I reagents. *Mol Immunol* 1998;35:177-188.
23. Stam NJ, Spits H, Ploegh HL. Monoclonal antibodies raised against denatured HLA-B locus heavy chains permit biochemical characterization of certain HLA-C locus products. *J Immunol* 1986;137:2299-2306.
24. Hutter H, Hammer A, Blaschitz A et al. Expression of HLA class I molecules in human first trimester and term placenta trophoblast. *Cell Tissue Res* 1996;286:439-447.
25. Stam NJ, Vroom TM, Peters PJ, Pastoors EB, Ploegh HL. HLA-A- and HLA-B-specific monoclonal antibodies reactive with free heavy chains in western blots, in formalin-fixed, paraffin-embedded tissue sections and in cryo-immuno-electron microscopy. *Int Immunol* 1990;2:113-125.
26. Perosa F, Luccarelli G, Prete M, Favoino E, Ferrone S, Dammacco F. Beta 2-microglobulin-free HLA class I heavy chain epitope mimicry by monoclonal antibody HC-10-specific peptide. *J Immunol* 2003;171:1918-1926.
27. Garrido F, Cabrer T, Accolla RS et al. HLA and cancer: 12th International Histocompatibility Workshop study. In: Charron D, ed. *Genetic Diversity of HLA. Functional and Medical Implication. Proc. Twelfth International Histocompatibility Workshop and Conference. Vol. II*. EDK, Sevres, France: 1997;445-452.
28. Chew SF, Kanaan C, Tait BD. HLA expression and cancer--14th IHIWS immunohistochemistry quality control exercise results. *Tissue Antigens* 2007;69 Suppl 1:248-251.
29. Dierssen JW, de Miranda NF, Ferrone S et al. HNPCC versus sporadic microsatellite-unstable colon cancers follow different routes toward loss of HLA class I expression. *BMC Cancer* 2007;7:33.
30. De Jong AE, Morreau H, Van Puijenbroek M et al. The role of mismatch repair gene defects in the development of adenomas in patients with HNPCC. *Gastroenterology* 2004;126:42-48.
31. Colombino M, Cossu A, Manca A et al. Prevalence and prognostic role of microsatellite instability in patients with rectal carcinoma. *Ann Oncol* 2002;13:1447-1453.
32. Qiu H, Sirivongs P, Rothenberger M, Rothenberger DA, Garcia-Aguilar J. Molecular prognostic factors in rectal cancer treated by radiation and surgery. *Dis Colon Rectum* 2000;43:451-459.

33. Iacopetta B. Are there two sides to colorectal cancer? *Int J Cancer* 2002;101:403-408.
34. Popat S, Hubner R, Houlston RS. Systematic review of microsatellite instability and colorectal cancer prognosis. *J Clin Oncol* 2005;23:609-618.
35. Cabrera CM, Jimenez P, Cabrera T, Esparza C, Ruiz-Cabello F, Garrido F. Total loss of MHC class I in colorectal tumors can be explained by two molecular pathways: beta2-microglobulin inactivation in MSI-positive tumors and LMP7/TAP2 downregulation in MSI-negative tumors. *Tissue Antigens* 2003;61:211-219.
36. Gryfe R, Kim H, Hsieh ET et al. Tumor microsatellite instability and clinical outcome in young patients with colorectal cancer. *N Engl J Med* 2000;342:69-77.