



Universiteit  
Leiden  
The Netherlands

## Role of integrin adhesions in cellular mechanotransduction

Balcioğlu, H.E.

### Citation

Balcioğlu, H. E. (2016, March 8). *Role of integrin adhesions in cellular mechanotransduction*. Retrieved from <https://hdl.handle.net/1887/38405>

Version: Corrected Publisher's Version

License: [Licence agreement concerning inclusion of doctoral thesis in the Institutional Repository of the University of Leiden](#)

Downloaded from: <https://hdl.handle.net/1887/38405>

**Note:** To cite this publication please use the final published version (if applicable).

Cover Page



Universiteit Leiden



The handle <http://hdl.handle.net/1887/38405> holds various files of this Leiden University dissertation

**Author:** Balcioğlu, Hayri Emrah

**Title:** Role of integrin adhesions in cellular mechanotransduction

**Issue Date:** 2016-03-08

# CHAPTER 1

---

## INTRODUCTION: CELL MATRIX ADHESIONS - FEELING THE FORCE <sup>1</sup>

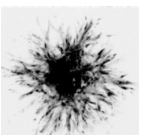
---

---

<sup>1</sup>This chapter is partially based on: Karin A Jansen; Dominique M Donato; Hayri E Balcioglu; Thomas Schmidt; Erik HJ Danen; Gijsje H Koenderink, A guide to mechanobiology: Where biology and physics meet., *Biochimica et biophysica acta*. 2015

### **Abstract**

In their natural context, cells are in contact with the extracellular matrix (ECM) that provides cells with chemical and physical cues. The physical properties of the ECM control cell survival, proliferation, and differentiation, and its deregulation can contribute to pathologies such as fibrosis and cancer. Transmembrane receptors of the integrin family couple the ECM network to the intracellular cytoskeletal network. Integrins sense and transmit biophysical cues in both directions, providing mechanical homeostasis between cells and ECM. Here, we discuss recent advances in our understanding of the integrin-associated mechanotransduction complex within cell-matrix adhesions and how this, in concert with chemosensory signaling pathways, controls cell fate.



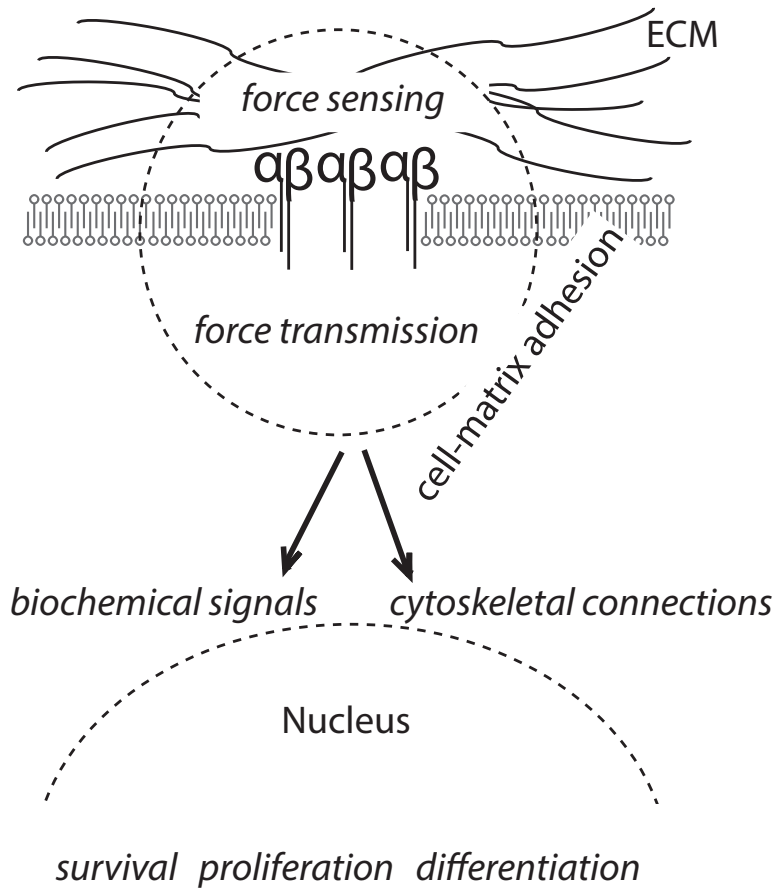
Cells are able to sense and respond to physical as well as chemical aspects of their surrounding extracellular matrix (ECM) to maintain homeostasis with their environment. The physical aspect of this interaction determines normal cell function, stem cell differentiation and tissue homeostasis [1, 2], while deregulation can contribute to onset and progression of cancer [3]. Forces also play a crucial role in embryogenesis [4, 5] and cells in our body are constantly under force; e.g. cell-cell forces in epithelial tissues, compression and tension due to muscle contraction, shear forces in vasculature, lung epithelium and intestines. Therefore, in addition to its importance in cancer research, manipulating the mechanical properties of the ECM has become a powerful tool in stem cell research and tissue engineering.

## 1.1 Mechanics of mechanosensing

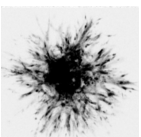
Several signal transducers have been implicated in the ability of cells to sense and respond to extracellular forces, including ion channels, cell matrix adhesion complexes and membrane-associated phospholipases [6, 7]. In any case, a force-transmitting cytoskeleton is essential for cells to sense the mechanical properties of the environment. The microtubules (MT) [8], actin cytoskeleton [9] and intermediate filaments (IF) [10] have all been implicated in cellular mechanotransduction. Indeed, Rho GTPases, the enzymes in control of cytoskeletal organization [11], play important roles in cellular sensing of- and responding to force [12, 13].

## 1.2 The mechanical scaffolds: the cytoskeleton and the ECM

*Cytoskeletal networks*, enable cells to maintain their shape and mechanical strength [14]. Of the three cytoskeletal systems; MTs, IFs and actin cytoskeleton, the emphasis has been on actin cytoskeleton that is responsible for traction force generation [15]. The actin cytoskeleton forms a continuous network between the nucleus and, via the adhesion complex, the ECM [16] (Figure 1.1). Cells, prominently on 2D substrates, form long contractile actomyosin structures termed stress fibers that apply traction forces via myosin molecular motors pulling on polarized actin filaments [15]. Formation and organization of such stress fibers



**Figure 1.1**  
*Mechanical cues from the environment dictate cell fate decisions.* Cartoon depicting force sensing, transmission, and translation into biological response through cell matrix adhesions.



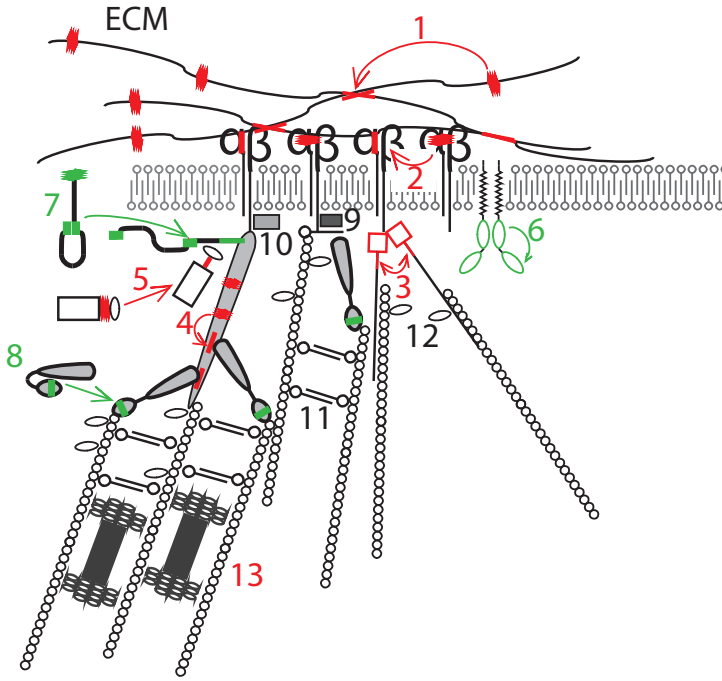
are stiffness dependent [17, 18]; and the formation of adhesion complexes is dependent on the actin cytoskeleton [19].

Purified networks of actin and intermediate filaments increase their stiffness under the influence of force. In other words, these networks strain-stiffen in response to mechanical shear or stretch [20–22]. This phenomenon allows cells to actively stiffen their actin cytoskeleton on hard substrates [18]. Moreover, strain-stiffening of IFs is thought to prevent excess deformation of cells and epithelial tissues [21, 22].

Microtubules (MTs) are not so widely studied in the context of mechanotransduction but MTs also influence cell-matrix adhesions by regulating traction forces via crosstalk with the actomyosin machinery and it has been shown that both on 2D substrates [23, 24] and in 3D collagen gels [25, 26], MT depolymerization causes increased traction forces and thereby adhesion maturation [27].

*ECM* properties play an important role in mechanosensing. Cells can sense the global (i.e. macroscopic) and local (e.g. fiber) matrix stiffness, matrix topography [28], the porosity [29] and dimensionality as well as actively change the physical properties of the ECM [30, 31]. In fibrous collagen or fibrin networks, cells can sense to a length scale of  $\sim 200$   $\mu\text{m}$  [32, 33], whereas on 2D flexible gels, this distance is reduced to a few tens of microns [34, 35]. The organization of ECM network is tailored to the function of each tissue, for instance collagen fibers are thick and aligned in stiff tissues like tendon to ensure tensile strength, whereas they are thin and organized in a meshwork in cornea to ensure optical transparency. During disease progression and aging the physiological organization of the ECM is subject to changes and ECM is increasingly recognized as an active player and potential therapeutic target in diseases such as fibrosis, atherosclerosis and cancer [36–40].

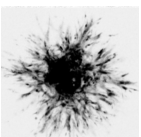
The ECM forms a scaffold for cells to adhere to and acts as a reservoir for growth factors, cytokines and proteolytic enzymes. ECM structures can be 2D (e.g. basement membrane) as well as 3D (connective tissue) and cell matrix adhesion proteins regulate cell motility on both of these ECM environments [41].



**Figure 1.2**

**Cell matrix adhesions as hotspots for bidirectional mechanotransduction.**

Elements associated with cell matrix adhesions that act as force sensors; e.g. change conformation/interactions in response to force are indicated in red. Elements that are implicated in force transmission but have not (yet) been directly implicated as force sensors are indicated in green. 1) When cytoskeletal contractility, through integrins, stretches fibronectin fibers; cryptic sites are exposed that cause enhanced cross-linking; 2) intracellular or extracellular forces cause conformational changes in the integrin head domain of some integrins driving strengthening of a catch bond with ECM; 3) kinetics of filamin dimerization change under force, which affects its actin and integrin binding; 4) stretching of flexible domains in talin exposes cryptic vinculin (8)-binding sites; 5) stretching of the linker domain in p130Cas may expose phosphorylation sites, which can trigger new protein-protein interactions; 6) force-dependent unfolding of the zipper-like autoinhibitory domains in RPTPalpha may underlie its role in rigidity sensing; 7) force-dependent breaking of an autoinhibitory intramolecular interaction involving the FERM domain and/or stretching of its adhesion targeting domain may trigger FAK activation and explain its role in force transmission; 8) myosin contractility-dependent interaction of vinculin head and tail domains is important for its role in mechanotransduction; 9-12) ILK, paxillin, alpha-actinin and zyxin have been implicated in rigidity sensing but it is not known whether they undergo conformational change in response to physiological force; 13) extracellular forces, through cell matrix adhesions enhance actomyosin contractility thereby balancing intra- and extracellular forces in the cell matrix adhesions and coupling through physical linkage to the nuclear envelope.





### 1.3 Cell matrix adhesions at the heart of force sensing

The regions where cells are in close physical contact with their environment and connect to the actin cytoskeleton - the "cell matrix adhesions" - appear to be hotspots for mechanotransduction [42] (Figure 1.2). Within cell matrix adhesions, clustered integrin transmembrane receptors bind ECM components with their globular head domains and connect to the actin cytoskeleton through their short cytoplasmic tails [43–45]. Coupling to the cytoskeleton is indirect, involving a large, regulated protein complex that connects the integrin tails to f-actin fibers [43]. Cell matrix adhesions are mechanosensitive structures [46–48] that may also be centers for protein synthesis through force dependent recruitment of ribosomes [49]. The activity of Rho GTPases is regulated by force responsive signaling cascades in cell matrix adhesions [50]. In turn, Rho GTPase-mediated alterations in cytoskeletal tension affect growth and turnover of cell-matrix adhesions [51, 52].

Cell matrix adhesions have a well-preserved nanoarchitecture [53], their size correlates with cell migration speed in 2D [54] and the presence of cell matrix adhesions in 3D ECM environments has been established [55–57]. The tight connection between force and cell matrix adhesions has been studied using laser tweezers [58], traction force microscopy on deformable gels [59], micropillar arrays [60, 61] and bead displacement maps in 3D ECM networks [62].

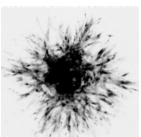
Integrins recruit more than 150 different proteins to the cell-ECM adhesion complex, many of which are Lin11, Isi-1, Mec-3 (LIM) domain proteins that were recruited to the adhesion in a force responsive manner [63]. Integrins as well as several integrin-associated proteins that reside in cell matrix adhesions have also been shown to act as mechanotransducers [64]: they change conformation and/or expose new protein-binding sites when stretched by force. This allows cell matrix adhesions to alter intermolecular interactions that affect signaling pathways and connections to the actin cytoskeleton in response to force, thereby ensuring a balance between extracellular (ECM) and intracellular (cytoskeletal) forces. Indeed, the molecular architecture and size of cell matrix adhesions depend on myosin-derived cellular contractility [65, 66]. Key force sensors associated with cell matrix adhesions are described in Figure 1.2. Notably, for several additional cell matrix adhesion-associated proteins,

despite their important role in adhesion and migration, such as tensin, parvins, kindlins; neither conformational changes in response to force nor direct implication in force transmission has been demonstrated thus far.

*Integrins* are bi-directional transmembrane signaling receptors. Intracellular proteins bind to the tail region of integrins, thus causing conformational changes in the head region that increases affinity for its extracellular ligands (inside-out signaling) and ligand binding triggers conformational changes that activate intracellular signaling cascades (outside-in signaling). Integrins are heterodimers of an  $\alpha$  and a  $\beta$  subunit and so far 24 different heterodimers formed by combinations of 18 different  $\alpha$  subunits and 8  $\beta$  subunits have been identified [45]. Most integrins recognize multiple ligands, for instance, integrin  $\alpha v \beta 3$  can bind to vitronectin, fibronectin and fibrinogen through the RGD-binding motif [67]. Additionally, in 3D environments, integrins are required for the fibrillogenesis of various ECM proteins [68, 69].

Integrins play a central role in environment sensing: integrin binding to the ECM promotes integrin clustering and recruitment of additional proteins into cell matrix adhesions [70], and through cytoplasmic linker proteins integrins connect to the actin cytoskeleton, which in turn is physically connected to the nucleus [71]. The spacing and pattern of integrin ligands controls cell spreading and cell matrix adhesion maturation [72]. It has been shown that clustering of integrins to form adhesion complexes requires a certain minimum ligand density [72–76] and that forces supported by individual integrin-RGD pair increases with reduced ligand spacing [77]. In addition, integrins go through force dependent binding/unbinding cycles, which regulate the activity of Rho GTPases, cell matrix adhesion formation, and integrin turnover [78, 79].

Mechanical loading has been shown to influence the lifetime of some integrin-ECM bonds. For instance  $\alpha I I b \beta 3$ , exhibits slip-bond behavior characterized by a decreased lifetime with increasing load [80], whereas the integrin  $\alpha 5 \beta 1$  heterodimer forms catch bonds with the ECM protein, fibronectin: the bonds are strengthened in response to external (ECM-driven) or internal (cytoskeleton-derived) force application [81, 82]. This force-dependent strengthening of catch bonds between  $\alpha 5 \beta 1$  and fibronectin is necessary to create downstream signaling cascades [83] and theoretical modeling has shown that catch bond clusters can act as autonomous mechanosensors [84, 85].



Different integrin heterodimers that bind to the same ECM protein have been shown to respond differently to applied force. Cells adhering to fibronectin substrates through  $\alpha v \beta 3$  versus  $\alpha 5 \beta 1$  integrins, for instance, differ in traction force generation [86, 87], dynamics [88], and adhesion [88, 89]. These integrins activate different intracellular signaling cascades [87, 90] and interchanging the ligand binding domains reverses the signaling phenotype [91, 92]. Similarly, expression of  $\alpha v \beta 6$  integrins in the presence or absence of  $\alpha 5 \beta 1$  changes traction force generation [84]. Different splice variants of  $\alpha 6 \beta 1$  also give rise to different phenotypes due to the two distinct cytoplasmic domains [93]. Thus cells can regulate their mechanosensitivity by modifying the integrin expression profile.

*ILK* (integrin linked kinase) is a pseudokinase that is part of the ILK-Pinch-Parvin (IPP) complex that plays critical roles in coupling integrins to the f-actin cytoskeleton in cell matrix adhesions [94]. ILK is directly recruited to integrin beta1 and beta3 cytoplasmic domains and is crucial for actin rearrangement, cell polarization, spreading, migration, proliferation, survival and tumor metastasis [95]. The ILK protein itself has not been shown to directly respond to force but it is recruited to cell matrix adhesions in a myosin II activity-dependent manner [96].

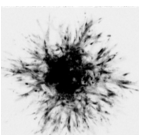
*Talin* and *vinculin* are adaptor proteins located in the cell matrix adhesions that have a mechanosensitive interaction. The talin head domain activates integrin through binding to its beta tail causing dissociation of the alpha and beta cytoplasmic domains [97]. Talin also directly connects integrins to the actin cytoskeleton. Talin is important for force-induced adhesion strengthening through interactions with integrin  $\alpha v \beta 3$  [88]. Vinculin is recruited to cell matrix adhesions in a force dependent manner [66, 98] and mediates cell matrix adhesion growth through binding to talin and f-actin [99]. Vinculin is required for force-induced cell matrix adhesion stabilization [100] and overall cell responses to environment stiffness [101, 102] possibly through Src-mediated phosphorylation at residues Y100 and Y1065 [103]. Despite enhancing cellular traction forces, vinculin is not required for force transmission at cell matrix adhesions but myosin contractility-dependent interaction of the vinculin head and tail domains is important for cellular mechanotransduction [102, 104]. Experiments with isolated talin and vinculin molecules showed that application of physiological forces to talin molecules leads to exposure of cryptic vinculin-binding sites [105]. This unfolding of talin has also been observed in isolated cells [106]. Possibly through this in-

teraction, vinculin stabilizes talin in an unfolded conformation and its localization shifts from integrin proximal to actin proximal region with increasing force [107]. Notably, vinculin interacts with several other cell matrix adhesion proteins and can be recruited to cell matrix adhesions upon force application in a talin-independent manner as well (see paxillin section).

*Filamin* and *alpha-actinin* are f-actin crosslinking proteins that can also directly bind integrin to actin filaments [108]. The filamin A-integrin interaction requires force [109], can stimulate activation of Rho GTPases in a force dependent manner [110], and is necessary for cells to induce collagen gel contraction [111]. Filamin A can unfold and change actin-binding dynamics under force [112]. Filamin A and talin bind to the same region in the integrin cytoplasmic tail, which might suggest a competition between filamin A and talin for integrin binding [113]. However knockdown of filamin A causes, in addition to an increased number of force-induced apoptotic cells, a reduction in force-induced beta1 integrin activation and a reduction in recruitment of talin and vinculin molecules to the adhesion [114]. Alpha-actinin, competes with talin for integrin beta3 tail binding but cooperates with talin when binding the integrin beta1 tail [115]. Alpha-actinin is not required for cell matrix adhesion force generation but it controls cell matrix adhesion maturation through its role in generating an actin network [9] and in connecting this network to the integrin mediated adhesions [115].

*Zyxin* recruits actin polymerizing proteins to integrin-mediated adhesions [116]. It changes binding kinetics and induces actin polymerization at cell matrix adhesions under force [117, 118]. Zyxin is also known to mobilize from cell matrix adhesions to actin fibers upon stretch [119] in a force-dependent manner [120]. Upon force-dependent relocalization to actin fibers, zyxin, together with alpha-actinin plays a role in actin stress fiber maintenance [121, 122].

*p130Cas* is a member of the Cas (Crk-associated substrate) family of proteins that is localized to cell matrix adhesions. p130Cas plays a role in migration, cell cycle control, apoptosis, differentiation and cancer development [123, 124]. Stretching the p130Cas protein in vitro increases its tyrosine phosphorylation, which is known to influence adhesion formation and actin dynamics [125, 126]. p130Cas phosphorylation is also important in cellular reorientation upon cyclic stretch [127] and coupling of the cytoskeleton to the adhesion during migration [128]. Studies of



vinculin knockout cells and vinculin mutants unable to bind to p130Cas, have shown that vinculin is necessary for p130Cas to respond to changes in substrate rigidity [129].

**FAK** (Focal Adhesion Kinase) is a protein-tyrosine kinase that is present in cell matrix adhesions. FAK regulates the activity of Rho GT-Pases and its kinase activity increases in response to extracellular forces [130]. Modification of an autoinhibitory intramolecular interaction involving the FAK four-point-one, ezrin, radixin, moesin (FERM) domain may be involved in this regulatory mode [7]. Direct evidence from *in vitro* studies demonstrating that FAK is a mechanoresponsive protein is not available but computer simulations have predicted that the cell matrix adhesion targeting (FAT) domain of FAK protein will extend under physiological force and this might regulate its interaction with paxillin [131]. There is evidence that FAK can be activated in a tension dependent or independent manner through its interaction with different integrins [132]. Indeed, FAK is recruited to cell matrix adhesions in a myosin contractility-dependent manner [66].

**Paxillin** is a multidomain adaptor protein that is essential for cell matrix adhesion formation, plays an important role for cell migration in 2D and 3D [131, 133] and mediates force induced Rho GTPase activity [134]. Paxillin phosphorylation, but not its localization to cell matrix adhesions, depends on myosin II activity [66]. This force dependent phosphorylation of paxillin is regulated by FAK activity, which in turn regulates vinculin recruitment to cell matrix adhesions, adhesion assembly and turnover, and cellular response to changes in ECM stiffness [135, 136].

**RPTP-alpha** (receptor-like protein tyrosine kinase alpha) is a transmembrane protein that co-localizes with alpha<sub>v</sub> integrins at the leading edge of migrating cells and takes part in force-dependent formation and strengthening of cell matrix adhesions [137, 138]. RPTP-alpha might be able to respond directly to mechanical stimuli through force-dependent unfolding of its zipper-like autoinhibitory domains [139]. RPTP-alpha-dependent rigidity sensing influences neuronal migration [140] and is required for cells to exert forces on the ECM [61].

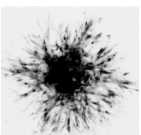
**ECM proteins**, similar to intracellular cell matrix adhesion proteins discussed above, can be stretched when force is applied and expose cryptic binding sites or growth factors [141]. The **fibronectin** matrix is an example of an ECM that is modified as force is applied to it. Fi-

fibronectin is a globular ECM protein that is highly abundant in plasma and produced by cells during active processes such as tissue regeneration, angiogenesis and tumor invasion. Fibronectin is assembled into a fibrillar network via interactions with integrins and syndecan receptors [69]. Rho GTPase activity is required to generate the contractile force for fibronectin fibrillogenesis and assembly of a fibronectin matrix. The fibronectin fibrillar network stiffens with applied force [142]. This stiffening is probably due to cryptic binding sites for intramolecular interactions within the network that become exposed under force [143, 144].

Taken together, integrins and several associated cell matrix adhesion proteins undergo conformational changes in response to force. This leads to new protein-protein interactions within cell matrix adhesions, strengthened interaction with the cytoskeleton, and cytoskeletal network stiffening when extracellular force is applied. Vice versa, enhanced cytoskeletal tension - likely through the same complex of proteins - exerts forces on ECM proteins (such as fibronectin), which induces ECM reorganization through enhanced protein unfolding and protein-protein interactions, causing ECM stiffening. Thus, integrin-containing cell matrix adhesions act as key protein complexes that mediate bidirectional force transduction across the plasma membrane to ensure physical homeostasis between cells and ECM.

## 1.4 Cell matrix adhesions in cell fate decisions

*Cell survival and proliferation* is supported by ECM attachment in a manner that requires an intact actomyosin network and the ability of cells to spread [145, 146]. Crucial determinants of cell cycle progression, including mitogen-activated protein(MAP) kinase activity, cyclin D expression, and cyclin-dependent kinase (cdk) inhibitor levels are not properly regulated when cells attach to soft, rather than stiff collagen matrices leading these cells into quiescence [147]. Integrin signaling through FAK is one mechanosensitive mechanism involved: on rigid but not soft ECM substrates FAK is activated causing Rac-mediated cyclin D1 gene induction, cyclin D1-dependent phosphorylation of the retinoblastoma(Rb) protein, and passage through the restriction point into synthesis(S) phase [148]. ECM stiffness also controls endothelial cell proliferation during angiogenesis *in vitro* and *in vivo*: in this case Rho-dependent regulation of the balance between two mutually antagonistic



transcription factors that influence expression of the vascular endothelial growth factor receptor (VEGFR) is the mechanoresponsive switch [149].

*Stem cell differentiation* is one of the processes where mechanotransduction has been shown to have a major impact [150]. Cellular mechanosensing drives mesenchymal stem cell differentiation, with soft substrates promoting neuronal- and stiff substrates promoting osteoblast lineage specification [1]. Traction forces and integrin signaling regulate cell stemness [151]. On the one hand sensing of global rigidity was hypothesized to be involved [1]. On the other hand, the underlying mechanism was reported to involve differences in ligand anchoring density: stiffer hydrogels provide a denser network of ECM protein anchorage points and the resulting larger resistance to integrin-mediated cellular pulling force is sensed by the cells and controls cell fate decisions [152]. Similarly, in 3D environments, the cell-mediated degradation of the ECM resulted in larger traction forces and higher osteogenesis [153]. The spacing and patterning of integrin ligands, through its regulation of cytoarchitecture, controls mechanical properties of mesenchymal stem cells that would be expected to affect differentiation [72, 154]. In embryonic stem cells, substrate stretching has provided somewhat confusing results with evidence for stretch supporting either differentiation or stemness [155–157]. In agreement with a need to balance cellular and extracellular forces, the ability to stimulate actomyosin contractility through RhoA signaling is important for *in vivo* differentiation of lung epithelium [158]. Given the importance for these findings to the field of tissue engineering and stem cell therapeutics, cell culture techniques have been developed where substrate rigidity can be fine-tuned to control the balance between pluripotency, differentiation, and lineage specification. This includes patterned substrates [159], 2D and 3D substrates with different rigidities [160–162], or substrates with dynamically controlled rigidity [163].

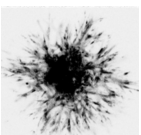
*Tumor progression* is another aspect in which integrin-mediated mechanotransduction plays a critical role [164]. Tumor malignancy is affected by ECM stiffness with increasing ECM rigidity promoting invasive growth through force-induced integrin- [39], FAK- [165, 166], Rho- and extracellular signal-regulated kinases(ERK)-signaling [40] and actomyosin contractility [167]. RPTP-alpha-dependent rigidity sensing also supports cancer cell invasion [168]. Integrin antagonists, which would disrupt the ability of cell matrix adhesion to act as mechanotransduc-

ing units, are considered to be promising anticancer therapeutics [169]. Interfering with integrin-mediated adhesions can reduce the ability of metastatic tumor cells to proteolytically degrade ECM during invasion [170] and it can increase tumor cell sensitivity to radiotherapy [171]. However, the role of integrins in different cancer types / oncogenic backgrounds is complex [172] and blocking integrin adhesions have been shown to both induce [173–175] and block [176] cancer progression.

**Other biological processes** - In the zebrafish, mutations in ILK interfere with the ability of cardiomyocytes to sense mechanical stretch and respond to it by upregulating crucial factors that regulate calcium waves [177]. Silencing beta-parvin phenocopied the ILK mutation, together providing genetic evidence that the integrin-IPP complex is important in heart function. This interaction is also important in the development and functionality of the mammalian heart [178] and has been implicated in cardiomyopathy in humans [179]. Integrin-mediated mechanosensing also plays an important role in normal vascular physiology and atherosclerosis. Changes in fluid shear stress affect endothelial cell biology in developing and adult bloodvessels. It has been proposed that the glycocalyx, receptors, and ion channels at the luminal surface all participate in shear stress sensing and the resulting tension is transmitted (i.e. via the cytoskeleton) to integrin-mediated cell-matrix adhesions at the basal cell surface. These adhesions subsequently act as mechanotransducers and activate signaling pathways to adapt to the altered blood flow [180].

## 1.5 Concluding remarks

It has become evident over the past years that mechanical cues from the ECM control physiology and pathology in a wide range of biological settings. It is clear that integrin-mediated adhesion sites are important mediators of bidirectional force transmission that connect the ECM and cytoskeleton. The force-regulated conformations and associations within cell matrix adhesions are partly resolved and many more molecular interactions that are subject to force modulation are expected to be discovered. Another aspect that is only partially understood is how mechanical signaling in cell matrix adhesions is coupled to cell fate decisions. The cytoskeleton connects integrins to LINC (linker of nucleoskeleton and cytoskeleton) complexes in the nuclear envelope. There, nesprin proteins





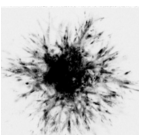
in the outer membrane connect to microtubules, actin fibers, and intermediate filaments while Sad1 and UNC84 (SUN) domain proteins in the inner membrane bind the nuclear lamina [181]. Since chromatin-binding proteins and DNA are attached to the nuclear lamina, extracellular mechanical stress may be propagated into the chromatin and affect gene expression through conformational regulation of DNA and associated proteins. However, although extracellular forces, through integrins are mechanically linked to changes in nuclear orientation and shape [71], direct evidence for such purely mechanical coupling between ECM and gene expression is lacking.

Mechanical perturbations are translated into biochemical signaling in cell matrix adhesions. Therefore the molecular composition of the adhesion is important for cellular mechanosensing. Studies relating myosin activity to protein localization and turnover rates have shown that the adhesion structure itself is force dependent [66, 117, 118]. Additionally, super resolution microscopy has also allowed the study of force dependent nanoscale architecture of adhesion protein vinculin [107]. However force-molecular recruitment relation in cell-matrix adhesions is unknown. This relation can be unraveled through a reliable method that addresses the abundance of adhesion molecules. Cell-matrix adhesions that are coupled to the ECM via different integrins have differential mechanoreponse [88]. Cellular expression profile of integrins also dictate activated signaling pathways and regulate cellular force application [86, 87]. However how different integrins regulate cellular response to mechanical cues remains to be addressed.

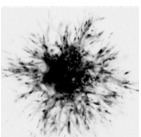
Integrin expression profile and role of mechanical cues have also been addressed in relation to cancer [39, 40]. ECM-tumor cell interaction as well as the ECM itself is deregulated in cancer and such changes affect cancer progression [3]. Understanding the altered mechanoreponse in cancer may help develop new therapeutic interventions. Extensive crosstalk with various other signaling pathways further complicates the concerted effect of physical and chemical stimuli. Therefore it is necessary to isolate the effect of mechanosensing that is cell type and protein expression independent to understand how the physical tumor-ECM communication might affect hallmarks of cancer such as activation of invasion, metastasis and angiogenesis.

## 1.6 Aim and outline of this thesis

With the studies described in this thesis, I aimed to further the understanding of the mechanism and importance of cellular mechanotransduction. The focus was on integrin mediated adhesions and their roles in inside-out and outside-in mechanosensing. In chapter 2, the role of physical signaling in tumor progression is studied. Using automated sequential microprinting of tumor and endothelial cells in 3D collagen gels in combination with reflection microscopy it is shown that; i) tumor expansion and tumor induced collagen organization are highly correlated, ii) this relation is dependent on cellular force generation but is resistant to depletion of collagen-binding integrins, iii) the remote organization of collagen induced by the tumor steers directional migration of endothelial cells, iv) this directional migration is impaired upon severing the physical connection between the tumor and endothelial cells. The physical signaling by the tumor is thus shown to influence tumor expansion and angiogenesis. Chapter 3 focusses on fibronectin binding integrins  $\alpha 5\beta 1$  and  $\alpha v\beta 3$  and describes their differential role in outside-in and inside-out cellular mechanosensing. It shows that cells expressing either of these integrins are able to reorganize their cytoskeleton upon cyclic stretch and induce ECM stiffness driven cellular spreading with similar efficiencies. Likewise, these integrins are shown to support similar magnitudes of cellular traction force generation and stiffness dependent regulation of cellular traction forces. However, cells that express  $\alpha v\beta 3$  are identified to form adhesions on softer substrates and to be able to better organize their actin cytoskeleton upon cyclic stretch and maintain this organization at higher strain rates. In contrast, cells that express  $\alpha 5\beta 1$  are shown to support more centripetally oriented traction forces in a ROCK/myosin activity dependent manner that also supports generation of longer actin fibers. Therefore it is shown that differential expression of fibronectin binding integrins regulate cellular plasticity by fine tuning sensing-force application capacities through differential regulation of ROCK/myosin signaling and actin cytoskeleton. In chapter 4 the relation between molecular composition of the adhesion, the force generation and environment stiffness is shown. Using a new approach to quantify the number of molecules in a cellular structure, the recruitment of adhesion proteins talin, paxillin, vinculin and FAK is studied in relation to force application and environment stiffness. Chapter 5 studies the cellular mechanotransduction in context of cancer cell migration and adhesion



structure. Genes that are identified as regulators of cell-matrix adhesion and cancer cell migration are shown to regulate cellular traction force generation mechanisms. Formation of larger adhesions, reduced cellular migration, higher traction force generation and slow force turnover rates are identified to be interrelated. Lastly, in chapter 6 the overall conclusions of the studies in this thesis and future perspectives are described.



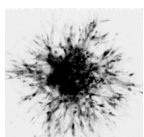
---

## BIBLIOGRAPHY

---

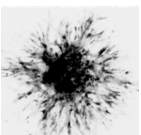
- [1] Adam J Engler et al. “Matrix Elasticity Directs Stem Cell Lineage Specification”. In: *Cell* 126.4 (2005).
- [2] A Wayne Orr et al. “Mechanisms of Mechanotransduction”. In: *Developmental Cell* 10.1 (2006).
- [3] Pengfei Lu, Valerie M Weaver, and Zena Werb. “The extracellular matrix: A dynamic niche in cancer progression”. In: *The Journal of Cell Biology* 196.4 (2012).
- [4] Thibaut Brunet et al. “Evolutionary conservation of early mesoderm specification by mechanotransduction in Bilateria.” In: *Nature communications* 4 (2013).
- [5] Otger Campàs et al. “Quantifying cell-generated mechanical forces within living embryonic tissues.” In: *Nature Methods* 11.2 (2014).
- [6] Akiko Mammoto, Tadanori Mammoto, and Donald E Ingber. “Mechanosensitive mechanisms in transcriptional regulation”. In: *Journal of Cell Science* 125.13 (2012).
- [7] Simon W Moore, Pere Roca-Cusachs, and Michael P Sheetz. “Stretchy proteins on stretchy substrates: the important elements of integrin-mediated rigidity sensing.” In: *Developmental Cell* 19.2 (2010).
- [8] Kenneth A Myers et al. “Distinct ECM mechanosensing pathways regulate microtubule dynamics to control endothelial cell branching morphogenesis.” In: *The Journal of Cell Biology* 192.2 (2011).
- [9] Patrick W Oakes et al. “Tension is required but not sufficient for focal adhesion maturation without a stress fiber template”. In: *The Journal of Cell Biology* 196.3 (2012).
- [10] Colin P Johnson et al. “Forced unfolding of proteins within cells.” In: *Science (New York, N.Y.)* 317.5838 (2007).

- [11] Aron B Jaffe and Alan Hall. “Rho GTPases: Biochemistry and biology”. In: *Annual Reviews of Cell Biology* 21 (2005).
- [12] Benjamin D Matthews et al. “Cellular adaptation to mechanical stress: role of integrins, Rho, cytoskeletal tension and mechanosensitive ion channels”. In: *Journal of Cell Science* 119.3 (2006).
- [13] Michele A Wozniak et al. “ROCK-generated contractility regulates breast epithelial cell differentiation in response to the physical properties of a three-dimensional collagen matrix”. In: *The Journal of Cell Biology* 163.3 (2003).
- [14] Fabio Zampieri, Matteo Coen, and Giulio Gabbiani. “The Prehistory of the Cytoskeleton Concept”. In: *Cytoskeleton* 71.8 (2014).
- [15] Keith Burridge and Erika S Wittchen. “The tension mounts: Stress fibers as force-generating mechanotransducers”. In: *The Journal of Cell Biology* 200.1 (2013).
- [16] Ning Wang, Jessica D Tytell, and Donald E Ingber. “Mechanotransduction at a distance: mechanically coupling the extracellular matrix with the nucleus”. In: *Nature Reviews. Molecular cell biology* 10.1 (2009).
- [17] Mirjam Ochsner et al. “Dimensionality controls cytoskeleton assembly and metabolism of fibroblast cells in response to rigidity and shape.” In: *PLoS One* 5.3 (2010).
- [18] Jérôme Solon et al. “Fibroblast adaptation and stiffness matching to soft elastic substrates.” In: *Biophysical Journal* 93.12 (2007).
- [19] Ulrich S Schwarz and Margaret L Gardel. “United we stand: integrating the actin cytoskeleton and cell-matrix adhesions in cellular mechanotransduction.” In: *Journal of Cell Science* 125.Pt 13 (2012).
- [20] PA Janmey et al. “Viscoelastic properties of vimentin compared with other filamentous biopolymer networks.” In: *The Journal of Cell Biology* 113.1 (1991).
- [21] Michael Schopferer et al. “Desmin and vimentin intermediate filament networks: their viscoelastic properties investigated by mechanical rheometry.” In: *Journal of Molecular Biology* 388.1 (2009).
- [22] Cornelis Storm et al. “Nonlinear elasticity in biological gels.” In: *Nature* 435.7039 (2005).



- [23] Barbara A Danowski. “Fibroblast contractility and actin organization are stimulated by microtubule inhibitors”. In: *Journal of Cell Science* 93 (1989).
- [24] Andrew Rape, Wei-hui H Guo, and Yu-li L Wang. “Microtubule depolymerization induces traction force increase through two distinct pathways.” In: *Journal of cell science* 124.Pt 24 (2011).
- [25] Areum Kim and Matthew W Petroll. “Microtubule regulation of corneal fibroblast morphology and mechanical activity in 3-D culture”. In: *Experimental Eye Research* 85.4 (2007).
- [26] Michael S Kolodney and Elliot L Elson. “Contraction due to microtubule disruption is associated with increased phosphorylation of myosin regulatory light chain”. In: *Proceedings of the National Academy of Sciences of the United States of America* 92.22 (1995).
- [27] Daniel HJ Ng et al. “Microtubule-Dependent Modulation of Adhesion Complex Composition”. In: *PLoS One* 9.12 (2014).
- [28] Ahmed Ballo et al. “Nanostructured model implants for in vivo studies: influence of well-defined nanotopography on de novo bone formation on titanium implants”. In: *International Journal of Nanomedicine* 6 (2011).
- [29] Amit Pathak and Sanjay Kumar. “Independent regulation of tumor cell migration by matrix stiffness and confinement”. In: *Proceedings of the National Academy of Sciences of the United States of America* 109.26 (2012).
- [30] Karin A Jansen et al. “Cells Actively Stiffen Fibrin Networks by Generating Contractile Stress”. In: *Biophysical Journal* 105.10 (2013).
- [31] Jessamine P Winer, Shaina Oake, and Paul A Janmey. “Non-linear Elasticity of Extracellular Matrices Enables Contractile Cells to Communicate Local Position and Orientation”. In: *PLoS One* 4.7 (2009).
- [32] Xiaoyue Ma et al. “Fibers in the Extracellular Matrix Enable Long-Range Stress Transmission between Cells”. In: *Biophysical Journal* 104.7 (2013).
- [33] Mathilda S Rudnicki et al. “Nonlinear Strain Stiffening Is Not Sufficient to Explain How Far Cells Can Feel on Fibrous Protein Gels”. In: *Biophysical Journal* 105.1 (2013).

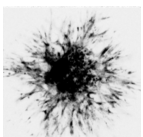
- [34] Amnon Buxboim et al. “How deeply cells feel: methods for thin gels”. In: *Journal of Physics: Condensed Matter* 22.19 (2010).
- [35] John M Maloney et al. “Influence of inite thickness and stiffness on cellular adhesion-induced deformation of compliant substrata”. In: *Physical review. E, Statistical, nonlinear, and soft matter physics* 78.4 Pt 1 (2008).
- [36] Craig E Barcus et al. “Stiff Collagen Matrices Increase Tumorigenic Prolactin Signaling in Breast Cancer Cells”. In: *Journal of Biological Chemistry* 288.18 (2013).
- [37] Ovijit Chaudhuri et al. “Extracellular matrix stiffness and composition jointly regulate the induction of malignant phenotypes in mammary epithelium”. In: *Nature Materials* 13.10 (2014).
- [38] Cedric Gaggioli et al. “Fibroblast-led collective invasion of carcinoma cells with differing roles for RhoGTPases in leading and following cells”. In: *Nature Cell Biology* 9.12 (2007).
- [39] Kandice R Levental et al. “Matrix Crosslinking Forces Tumor Progression by Enhancing Integrin Signaling”. In: *Cell* 139.5 (2009).
- [40] Matthew J Paszek et al. “Tensional homeostasis and the malignant phenotype”. In: *Cancer Cell* 8.3 (2005).
- [41] Stephanie I Fraley et al. “A distinctive role for focal adhesion proteins in three-dimensional cell motility.” In: *Nature Cell Biology* 12.6 (2010).
- [42] Benjamin Geiger, Joachim P Spatz, and Alexander D Bershadsky. “Environmental sensing through focal adhesions”. In: *Nature Reviews* 10.1 (2009).
- [43] Cord Brakebusch and Reinhard Fässler. “The integrin-actin connection, an eternal love affair”. In: *The EMBO Journal* 22.10 (2003).
- [44] Keith Burridge et al. “Focal Adhesions: Transmembrane Junctions Between the Extracellular Matrix and the Cytoskeleton”. In: *Annual Review of Cell Biology* 4.1 (1988).
- [45] Richard O Hynes. “Integrins: Bidirectional, allosteric signaling machines”. In: *Cell* 110.6 (2002).





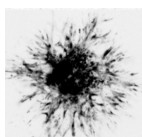
- [46] Daniel Choquet, Dan P Felsenfeld, and Michael P Sheetz. “Extracellular Matrix Rigidity Causes Strengthening of Integrin-Cytoskeleton Linkages”. In: *Cell* 88.1 (1997).
- [47] Ben-Zion Katz et al. “Physical State of the Extracellular Matrix Regulates the Structure and Molecular Composition of Cell-Matrix Adhesions”. In: *Molecular Biology of the Cell* 11.3 (2000).
- [48] Masha Prager-Khoutorsky et al. “Fibroblast polarization is a matrix-rigidity-dependent process controlled by focal adhesion mechanosensing.” In: *Nature Cell Biology* 13.12 (2011).
- [49] Marina E Chicurel et al. “Integrin binding and mechanical tension induce movement of mRNA and ribosomes to focal adhesions.” In: *Nature* 392.6677 (1998).
- [50] J Thomas Parsons, Alan R Horwitz, and Martin A Schwartz. “Cell adhesion: integrating cytoskeletal dynamics and cellular tension.” In: *Nature Reviews. Molecular Cell Biology* 11.9 (2010).
- [51] Stephan Huveneers and Erik HJ Danen. “Adhesion signaling - crosstalk between integrins, Src and Rho”. In: *Journal of Cell Science* 122.8 (2009).
- [52] Daniel Rivelino et al. “Focal Contacts as Mechanosensors Externally Applied Local Mechanical Force Induces Growth of Focal Contacts by an Mdia1-Dependent and Rock-Independent Mechanism”. In: *The Journal of Cell Biology* 153.6 (2001).
- [53] Pakorn Kanchanawong et al. “Nanoscale architecture of integrin-based cell adhesions.” In: *Nature* 468.7323 (2010).
- [54] Dong-Hwee Kim and Denis Wirtz. “Focal adhesion size uniquely predicts cell migration”. In: *The FASEB Journal* 27.4 (2013).
- [55] Chi-Li L Chiu et al. “Nanoimaging of focal adhesion dynamics in 3D.” In: *PLoS One* 9.6 (2014).
- [56] Edna Cukierman et al. “Taking cell-matrix adhesions to the third dimension.” In: *Science (New York, N.Y.)* 294.5547 (2001).
- [57] Kristopher E Kubow and Alan R Horwitz. “Reducing background fluorescence reveals adhesions in 3D matrices.” In: *Nature Cell Biology* 13.1 (2011).

- [58] Catherine G Galbraith, Kenneth M Yamada, and Michael P Sheetz. “The relationship between force and focal complex development”. In: *The Journal of Cell Biology* 159.4 (2002).
- [59] Nathalie Q Balaban et al. “Force and focal adhesion assembly: a close relationship studied using elastic micropatterned substrates”. In: *Nature Cell Biology* 3.5 (2001).
- [60] Jianping Fu et al. “Mechanical regulation of cell function with geometrically modulated elastomeric substrates.” In: *Nature Methods* 7.9 (2010).
- [61] Saba Ghassemi et al. “Cells test substrate rigidity by local contractions on submicrometer pillars.” In: *Proceedings of the National Academy of Sciences of the United States of America* 109.14 (2012).
- [62] Wesley R Legant et al. “Measurement of mechanical traction exerted by cells in three-dimensional matrices”. In: *Nature Methods* 7.12 (2010).
- [63] Mark A Smith, Laura M Hoffman, and Mary C Beckerle. “LIM proteins in actin cytoskeleton mechanoresponse”. In: *Trends in Cell Biology* 24.10 (2014).
- [64] Hiroaki Hirata et al. “Non-channel mechanosensors working at focal adhesion-stress fiber complex.” In: *Pflügers Archiv European Journal of Physiology* 467.1 (2015).
- [65] Kristopher E Kubow, Sarah K Conrad, and Rick A Horwitz. “Matrix Microarchitecture and Myosin II Determine Adhesion in 3D Matrices”. In: *Current biology: CB* 23.17 (2013).
- [66] Ana M Pasapera et al. “Myosin II activity regulates vinculin recruitment to focal adhesions through FAK-mediated paxillin phosphorylation.” In: *The Journal of cell biology* 188.6 (2010).
- [67] Jonathan D Humphries, Adam Byron, and Martin J Humphries. “Integrin ligands at a glance”. In: *Journal of Cell Science* 119.19 (2006).
- [68] Karl E Kadler, Adele Hill, and Elizabeth G Canty-Laird. “Collagen fibrillogenesis: fibronectin, integrins, and minor collagens as organizers and nucleators”. In: *Current Opinion in Cell Biology* 20.5 (2008).



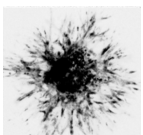
- [69] Yong Mao and Jean E Schwarzbauer. “Fibronectin fibrillogenesis, a cell-mediated matrix assembly process”. In: *Matrix Biology* 24.6 (2005).
- [70] Cheng-han H Yu et al. “Early integrin binding to Arg-Gly-Asp peptide activates actin polymerization and contractile movement that stimulates outward translocation.” In: *Proceedings of the National Academy of Sciences of the United States of America* 108.51 (2011).
- [71] Andrew J Maniotis, Christopher S Chen, and Donald E Ingber. “Demonstration of mechanical connections between integrins cytoskeletal filaments, and nucleoplasm that stabilize nuclear structure”. In: *Proceedings of the National Academy of Sciences of the United States of America* 94.3 (1997).
- [72] Elisabetta Cavalcanti-Adam et al. “Cell Spreading and Focal Adhesion Dynamics Are Regulated by Spacing of Integrin Ligands”. In: *Biophysical Journal* 92.8 (2009).
- [73] Marco Arnold et al. “Activation of Integrin Function by Nanopatterned Adhesive Interfaces”. In: *ChemPhysChem* 5.3 (2004).
- [74] Jinghuan Huang et al. “Impact of order and disorder in RGD nanopatterns on cell adhesion”. In: *Nano Letters* 9.3 (2009).
- [75] Stephen P Massia and Jeffrey A Hubbell. “An RGD spacing of 440 nm is sufficient for integrin alpha v beta 3-mediated fibroblast spreading and 140 nm for focal contact and stress fiber formation.” In: *The Journal of Cell Biology* 114.5 (1991).
- [76] Guillaume Saux et al. “Spacing of integrin ligands influences signal transduction in endothelial cells”. In: *Biophysical journal* 101.4 (2011).
- [77] Yang Liu et al. “Nanoparticle Tension Probes Patterned at the Nanoscale: Impact of Integrin Clustering on Force Transmission”. In: *Nano Letters* 14.10 (2014).
- [78] Christophe Guilly et al. “The Rho GEFs LARG and GEF-H1 regulate the mechanical response to force on integrins.” In: *Nature Cell Biology* 13.6 (2011).
- [79] Eileen Puklin-Faucher and Michael P Sheetz. “The mechanical integrin cycle”. In: *Journal of Cell Science* 122.2 (2009).

- [80] Rustem I Litvinov et al. “Dissociation of Bimolecular  $\alpha$ (IIb) $\beta$ (3)-Fibrinogen Complex under a Constant Tensile Force”. In: *Biophysical Journal* 100.1 (2011).
- [81] Fang Kong et al. “Cyclic mechanical reinforcement of integrin-ligand interactions”. In: *Molecular Cell* 49.6 (2013).
- [82] Feiya Y Li et al. “Force measurements of the  $\alpha$ (5) $\beta$ (1) integrin-fibronectin interaction”. In: *Biophysical Journal* 84.2 (2003).
- [83] Julie C Friedland, Mark H Lee, and David Boettiger. “Mechanically activated integrin switch controls  $\alpha$ 5 $\beta$ 1 function”. In: *Science* 323.5914 (2009).
- [84] Alberto Elosegui-Artola et al. “Rigidity sensing and adaptation through regulation of integrin types”. In: *Nature Materials* 13.6 (2014).
- [85] Elizaveta A Novikova and Cornelis Storm. “Contractile Fibers and Catch-Bond Clusters: a Biological Force Sensor?” In: *Biophysical Journal* 105.6 (2013).
- [86] Grace L Lin et al. “Activation of  $\beta$  1 but not  $\beta$  3 integrin increases cell traction forces”. In: *FEBS Letters* 587.6 (2013).
- [87] Herbert B Schiller et al. “ $\beta$ 1- and  $\alpha$ v-class integrins cooperate to regulate myosin II during rigidity sensing of fibronectin-based microenvironments.” In: *Nature Cell Biology* 15.6 (2013).
- [88] Pere Roca-Cusachs et al. “Clustering of  $\alpha$ (5) $\beta$ (1) integrins determines adhesion strength whereas  $\alpha$ (v) $\beta$ (3) and talin enable mechanotransduction”. In: *Proceedings of the National Academy of Sciences of the United States of America* 106.38 (2009).
- [89] Alexander Fuhrmann et al. “Cation Type Specific Cell Remodeling Regulates Attachment Strength”. In: *PLoS One* 9.7 (2014).
- [90] Dominic P White, Patrick T Caswell, and Jim C Norman. “ $\alpha$ v  $\beta$ -3 and  $\alpha$ -5  $\beta$ -1 integrin recycling pathways dictate downstream Rho kinase signaling to regulate persistent cell migration”. In: *The Journal of Cell Biology* 177.3 (2007).
- [91] Erik HJ Danen et al. “The fibronectin-binding integrins  $\alpha$ 5 $\beta$ 1 and  $\alpha$ v $\beta$ 3 differentially modulate RhoA-GTP loading, organization of cell matrix adhesions, and fibronectin fibrillogenesis”. In: *The Journal of Cell Biology* 159.6 (2002).



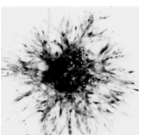
- [92] Hui Miao et al. “Differential regulation of Rho GTPases by beta1 and beta3 integrins: the role of an extracellular domain of integrin in intracellular signaling”. In: *Journal of Cell Science* 115.10 (2002).
- [93] Hira Goe et al. “Regulated Splicing of the alpha6 Integrin Cytoplasmic Domain Determines the Fate of Breast Cancer Stem Cells”. In: *Cell Reports* 7.3 (2014).
- [94] Sara A Wickström et al. “The ILK/PINCH/parvin complex: the kinase is dead, long live the pseudokinase!” In: *The EMBO journal* 29.2 (2010).
- [95] Moritz Widmaier et al. “Integrin-linked kinase at a glance”. In: *Journal of Cell Science* 125.8 (2012).
- [96] Herbert B Schiller et al. “Quantitative proteomics of the integrin adhesome show a myosin II-dependent recruitment of LIM domain proteins”. In: *EMBO Reports* 12.3 (2011).
- [97] Seiji Tadokoro et al. “Talin binding to integrin beta tails: a final common step in integrin activation.” In: *Science (New York, N. Y.)* 302.5642 (2003).
- [98] Hiroaki Hirata et al. “Force-dependent vinculin binding to talin in live cells: a crucial step in anchoring the actin cytoskeleton to focal adhesions”. In: *Am J Physiol Cell Physiol* 306.6 (2014).
- [99] Jonathan D Humphries et al. “Vinculin controls focal adhesion formation by direct interactions with talin and actin”. In: *The Journal of Cell Biology* 179.5 (2007).
- [100] Casten Grashoff et al. “Measuring mechanical tension across vinculin reveals regulation of focal adhesion dynamics”. In: *Nature* 466.7303 (2010).
- [101] Gerold Diez et al. “Head/tail interaction of vinculin influences cell mechanical behavior”. In: *Biochemical and Biophysical Research Communications* 406.1 (2011).
- [102] Andrew W Holle et al. “In situ mechanotransduction via vinculin regulates stem cell differentiation”. In: *Stem Cells* 31.11 (2013).
- [103] Vera Auernheimer et al. “Vinculin phosphorylation at residues Y100 and Y1065 is required for cellular force transmission.” In: *Journal of Cell Science* 128.18 (2015).

- [104] David W Dumbauld et al. “How vinculin regulates force transmission.” In: *Proceedings of the National Academy of Sciences of the United States of America* 110.24 (2013).
- [105] Armando del Rio et al. “Stretching Single Talin Rod Molecules Activates Vinculin Binding”. In: *Science* 323.5914 (2009).
- [106] Felix Margadant et al. “Mechanotransduction in vivo by repeated talin stretch-relaxation events depends upon vinculin.” In: *PLoS Biology* 9.12 (2011).
- [107] Lindsay B Case et al. “Molecular mechanism of vinculin activation and nanoscale spatial organization in focal adhesions.” In: *Nature Cell Biology* 17.7 (2015).
- [108] Alex-Xianghua X Zhou, John H Hartwig, and Levent M Akyürek. “Filamins in cell signaling, transcription and organ development.” In: *Trends in Cell Biology* 20.2 (2010).
- [109] Harvey S Chen, Kevin S Kolahi, and Mohammad RK Mofrad. “Phosphorylation Facilitates the Integrin Binding of Filamin under Force”. In: *Biophysical Journal* 97.12 (2009).
- [110] Allen J Ehrlicher et al. “Mechanical strain in actin networks regulates FilGAP and integrin binding to filamin A.” In: *Nature* 478.7368 (2011).
- [111] Scott Gehler et al. “Filamin A-beta 1 Integrin Complex Tunes Epithelial Cell Response to Matrix Tension”. In: *Molecular Biology of the Cell* 20.14 (2009).
- [112] Hyungsuk Lee et al. “Cytoskeletal Deformation at High Strains and the Role of Cross-link Unfolding or Unbinding”. In: *Cellular and Molecular Bioengineering* 2.1 (2009).
- [113] Tiila Kiema et al. “The Molecular Basis of Filamin Binding to Integrins and Competition with Talin”. In: *Molecular Cell* 21.3 (2005).
- [114] Vanessa I Pinto et al. “Filamin A protects cells against force-induced apoptosis by stabilizing talin- and vinculin-containing cell adhesions”. In: *The FASEB Journal* 28.1 (2014).
- [115] Pere Roca-Cusachs et al. “Integrin-dependent force transmission to the extracellular matrix by alpha-actinin triggers adhesion maturation.” In: *Proceedings of the National Academy of Sciences of the United States of America* 110.15 (2013).



- [116] David A Nix et al. “Targeting of Zyxin to Sites of Actin Membrane Interaction and to the Nucleus”. In: *Journal of Biological Chemistry* 276.37 (2001).
- [117] Hiroaki Hirata, Hitoshi Tatsumi, and Masahiro Sokabe. “Mechanical forces facilitate actin polymerization at focal adhesions in a zyxin-dependent manner”. In: *Journal of Cell Science* 121.17 (2008).
- [118] Tanmay P Lele et al. “Mechanical forces alter zyxin unbinding kinetics within focal adhesions of living cells”. In: *Journal of Cellular Physiology* 207.1 (2006).
- [119] Masaaki Yoshigi et al. “Mechanical force mobilizes zyxin from focal adhesions to actin filaments and regulates cytoskeletal reinforcement”. In: *The Journal of Cell Biology* 171.2 (2005).
- [120] Julien Colombelli et al. “Mechanosensing in actin stress fibers revealed by a close correlation between force and protein localization”. In: *Journal of Cell Science* 122.10 (2009).
- [121] Laura M Hoffman et al. “Stretch-induced actin remodeling requires targeting of zyxin to stress fibers and recruitment of actin regulators”. In: *Molecular Biology of the Cell* 23.10 (2012).
- [122] Mark A Smith et al. “A Zyxin-Mediated Mechanism for Actin Stress Fiber Maintenance and Repair”. In: *Developmental Cell* 19.3 (2010).
- [123] Angela Barrett et al. “p130Cas: A key signalling node in health and disease”. In: *Cellular Signalling* 25.4 (2013).
- [124] Radoslav Janoštiak Radoslavtiak et al. “Mechanosensors in integrin signaling: The emerging role of p130Cas”. In: *European Journal of Cell Biology* 93.10-12 (2014).
- [125] Leslie M Meenderink et al. “P130Cas Src-binding and substrate domains have distinct roles in sustaining focal adhesion disassembly and promoting cell migration”. In: *PLoS One* 5.10 (2010).
- [126] Yasuhiro Sawada et al. “Force sensing by mechanical extension of the Src family kinase substrate p130Cas”. In: *Cell* 127.5 (2006).
- [127] Verena Niediek et al. “Cyclic stretch induces reorientation of cells in a Src family kinase- and p130Cas-dependent manner”. In: *European Journal of Cell Biology* 91.2 (2012).

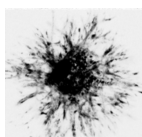
- [128] Hiroaki Machiyama et al. “Displacement of p130Cas from focal adhesions links actomyosin contraction to cell migration”. In: *Journal of Cell Science* 127.16 (2014).
- [129] Radoslav Janoštiak et al. “CAS directly interacts with vinculin to control mechanosensing and focal adhesion dynamics”. In: *Cellular and Molecular Life Sciences* 71.4 (2013).
- [130] Alok Tomar and David D Schlaepfer. “Focal adhesion kinase: switching between GAPs and GEFs in the regulation of cell motility”. In: *Current Opinion in Cell Biology* 21.5 (2009).
- [131] Michael C Brown and Christopher E Turner. “Paxillin: Adapting to Change”. In: *Physiological Reviews* 84.4 (2004).
- [132] Jihye Seong et al. “Distinct biophysical mechanisms of focal adhesion kinase mechanoactivation by different extracellular matrix proteins.” In: *Proceedings of the National Academy of Sciences of the United States of America* 110.48 (2013).
- [133] Nicholas O Deakin and Christopher E Turner. “Paxillin inhibits HDAC6 to regulate microtubule acetylation, Golgi structure, and polarized migration”. In: *The Journal of Cell Biology* 206.3 (2014).
- [134] Grzegorz Gawlak et al. “Paxillin mediates stretch-induced Rho signaling and endothelial permeability via assembly of paxillin-p42/44MAPK-GEF-H1 complex.” In: *FASEB Journal* 28.7 (2014).
- [135] Sergey V Plotnikov et al. “Force fluctuations within focal adhesions mediate ECM-rigidity sensing to guide directed cell migration.” In: *Cell* 151.7 (2012).
- [136] Ronen Zaidel-Bar et al. “A paxillin tyrosine phosphorylation switch regulates the assembly and form of cell-matrix adhesions”. In: *Journal of Cell Science* 120.1 (2007).
- [137] Guoying Jiang et al. “Rigidity sensing at the leading edge through alpha(v)beta(3) Integrins and RPTP alpha”. In: *Biophysical Journal* 90.5 (2006).
- [138] Götz von Wichert et al. “RPTP-alpha acts as a transducer of mechanical force on alphav/beta3-integrin-cytoskeleton linkages”. In: *The Journal of Cell Biology* 161.1 (2003).
- [139] Guoqiang Jiang, Jeroen den Hertog, and Tony Hunter. “Receptor-like protein tyrosine phosphatase alpha homodimerizes on the cell surface.” In: *Molecular and Cellular Biology* 20.16 (2000).





- [140] Ana Kostic, Jan Sap, and Michael P Sheetz. “RPTPalph is required for rigidity-dependent inhibition of extension and differentiation of hippocampal neurons”. In: *Journal of Cell Science* 120.21 (2007).
- [141] Bojun Li et al. “Mesenchymal stem cells exploit extracellular matrix as mechanotransducer.” In: *Scientific Reports* 3 (2013).
- [142] Enrico Klotzsch et al. “Fibronectin forms the most extensible biological fibers displaying switchable force-exposed cryptic binding sites”. In: *Proceedings of the National Academy of Sciences of the United States of America* 106.43 (2009).
- [143] Andres F Oberhauser et al. “The mechanical hierarchies of fibronectin observed with single-molecule AFM.” In: *Journal of molecular biology* 319.2 (2002).
- [144] Michael L Smith et al. “Force-induced unfolding of fibronectin in the extracellular matrix of living cells.” In: *PLoS Biology* 5.10 (2007).
- [145] Christopher S Chen et al. “Geometric control of cell life and death.” In: *Science (New York, N.Y.)* 276.5317 (1997).
- [146] Judah Folkman and Anne Moscona. “Role of cell shape in growth control.” In: *Nature* 273.5661 (1978).
- [147] Jeanne Fringer and Frederick Grinnell. “Fibroblast quiescence in floating or released collagen matrices: contribution of the ERK signaling pathway and actin cytoskeletal organization.” In: *Journal of Biological Chemistry* 276.33 (2001).
- [148] Eric A Klein et al. “Cell-Cycle Control by Physiological Matrix Elasticity and In Vivo Tissue Stiffening”. In: *Current Biology* 19.18 (2009).
- [149] Akiko Mammoto et al. “A mechanosensitive transcriptional mechanism that controls angiogenesis.” In: *Nature* 457.7233 (2009).
- [150] Tadanori Mammoto and Donald E Ingber. “Mechanical control of tissue and organ development”. In: *Development* 137.9 (2010).
- [151] Hermes Taylor-Weiner, Neeraja Ravi, and Adam J Engler. “Traction forces mediated by integrin signaling are necessary for definitive endoderm specification”. In: *Journal of Cell Science* 128.10 (2015).

- [152] Britta Trappmann et al. “Extracellular-matrix tethering regulates stem-cell fate”. In: *Nature Materials* 11.7 (2012).
- [153] Sudhir Khetan et al. “Degradation-mediated cellular traction directs stem cell fate in covalently crosslinked three-dimensional hydrogels”. In: *Nature Materials* 12.5 (2013).
- [154] Evelyn KF Yim et al. “Nanotopography-induced changes in focal adhesions, cytoskeletal organization, and mechanical properties of human mesenchymal stem cells”. In: *Biomaterials* 31.6 (2010).
- [155] Farhan Chowdhury et al. “Material properties of the cell dictate stress-induced spreading and differentiation in embryonic stem cells.” In: *Nature Materials* 9.1 (2010).
- [156] Rie Horiuchi et al. “Cyclic mechanical strain maintains Nanog expression through PI3K/Akt signaling in mouse embryonic stem cells”. In: *Experimental Cell Research* 318.14 (2012).
- [157] Somen Saha et al. “Inhibition of human embryonic stem cell differentiation by mechanical strain”. In: *Journal of Cellular Physiology* 206.1 (2006).
- [158] Kimberly A Moore et al. “Control of basement membrane remodeling and epithelial branching morphogenesis in embryonic lung by Rho and cytoskeletal tension”. In: *Developmental Dynamics* 232.2 (2005).
- [159] Evelyn Yim, Stella W Pang, and Kam W Leong. “Synthetic nanostructures inducing differentiation of human mesenchymal stem cells into neuronal lineage”. In: *Experimental Cell Research* 313.9 (2007).
- [160] Sirio Dupont et al. “Role of YAP/TAZ in mechanotransduction”. In: *Nature* 474.7350 (2011).
- [161] Nathaniel Huebsch et al. “Harnessing traction-mediated manipulation of the cell/matrix interface to control stem-cell fate”. In: *Nature Materials* 9.6 (2010).
- [162] Yubing Sun et al. “Mechanics regulates fate decisions of human embryonic stem cells.” In: *PLoS One* 7.5 (2012).
- [163] Jennifer L Young and Adam J Engler. “Hydrogels with time-dependent material properties enhance cardiomyocyte differentiation in vitro”. In: *Biomaterials* 32.4 (2011).



- [164] Jiangling Xiong, Hayri E Balcioglu, and Erik HJ Danen. “Integrin signaling in control of tumor growth and progression”. In: *The International Journal of Biochemistry & Cell Biology* 45.5 (2013).
- [165] Götz von Wichert et al. “Focal adhesion kinase mediates defects in the force-dependent reinforcement of initial integrin-cytoskeleton linkages in metastatic colon cancer cell lines”. In: *European journal of cell biology* 87.1 (2007).
- [166] Paolo P Provenzano et al. “Matrix density-induced mechanoregulation of breast cell phenotype, signaling and gene expression through a FAK-ERK linkage.” In: *Oncogene* 28.49 (2009).
- [167] Michael S Samuel et al. “Actomyosin-Mediated Cellular Tension Drives Increased Tissue Stiffness and beta-Catenin Activation to Induce Epidermal Hyperplasia and Tumor Growth”. In: *Cancer Cell* 19.6 (2011).
- [168] Denis Krndija et al. “Substrate stiffness and the receptor-type tyrosine-protein phosphatase alpha regulate spreading of colon cancer cells through cytoskeletal contractility.” In: *Oncogene* 29.18 (2010).
- [169] Jay S Desgrosellier et al. “An integrin alpha(v)beta(3)-c-Src oncogenic unit promotes anchorage-independence and tumor progression.” In: *Nature Medicine* 15.10 (2009).
- [170] Brian T Beaty et al. “beta1 integrin regulates Arg to promote invadopodial maturation and matrix degradation.” In: *Molecular Biology of The Cell* 24.11 (2013).
- [171] Iris Eke et al. “beta1 Integrin/FAK/cortactin signaling is essential for human head and neck cancer resistance to radiotherapy”. In: *Journal of Clinical Investigation* 122.4 (2012).
- [172] Jordi Puigvert et al. “Cross-Talk between Integrins and Oncogenes Modulates Chemosensitivity”. In: *Molecular Pharmacology* 75.4 (2009).
- [173] Kim Moran-Jones, Anita Ledger, and Matthew J Naylor. “beta1 integrin deletion enhances progression of prostate cancer in the TRAMP mouse model.” In: *Scientific Reports* 2 (2012).
- [174] Jenny G Parvani et al. “Targeted inactivation of beta1 integrin induces beta3 integrin switching, which drives breast cancer metastasis by TGF-beta.” In: *Molecular Biology of the Cell* 24.21 (2013).

- [175] Hoa H Truong et al. “beta1 integrin inhibition elicits a prometastatic switch through the TGFbeta-miR-200-ZEB network in E-cadherin-positive triple-negative breast cancer.” In: *Science Signaling* 7.312 (2014).
- [176] Norma E Ramirez et al. “The alpha2beta1 integrin is a metastasis suppressor in mouse models and human cancer.” In: *The Journal of Clinical Investigation* 121.1 (2011).
- [177] Garnet Bendig et al. “Integrin-linked kinase, a novel component of the cardiac mechanical stretch sensor, controls contractility in the zebrafish heart”. In: *Genes & Development* 20.17 (2006).
- [178] Gregory E Hannigan, John G Coles, and Shoukat Dedhar. “Integrin-linked kinase at the heart of cardiac contractility, repair, and disease.” In: *Circulation research* 100.10 (2007).
- [179] Ralph Knöll et al. “Laminin-alpha 4 and integrin-linked kinase mutations cause human cardiomyopathy via simultaneous defects in cardiomyocytes and endothelial cells”. In: *Circulation* 116.5 (2007).
- [180] Cornelia Hahn and Martin A Schwartz. “Mechanotransduction in vascular physiology and atherogenesis.” In: *Nature Reviews. Molecular Cell Biology* 10.1 (2009).
- [181] Rui P Martins et al. “Mechanical Regulation of Nuclear Structure and Function”. In: *Annual Review of Biomedical Engineering* 14.1 (2012).

