



Universiteit
Leiden
The Netherlands

Biomolecular and epidemiological aspects of human papillomavirus induced cervical carcinogenesis

Vermeulen, C.F.W.

Citation

Vermeulen, C. F. W. (2007, October 16). *Biomolecular and epidemiological aspects of human papillomavirus induced cervical carcinogenesis*. Departments of Pathology and Gynaecology, Medicine / Leiden University Medical Center (LUMC), Leiden University. Retrieved from <https://hdl.handle.net/1887/12378>

Version: Corrected Publisher's Version

License: [Licence agreement concerning inclusion of doctoral thesis in the Institutional Repository of the University of Leiden](#)

Downloaded from: <https://hdl.handle.net/1887/12378>

Note: To cite this publication please use the final published version (if applicable).

List of Publications

1. Vermeulen CFW, Jordanova ES, Zomerdijk-Nooijen YA, Ter Haar NT, Peters AAW, Fleuren GJ. Frequent HLA Class I Loss is an Early Event in Cervical Carcinogenesis. *Human Immunology* 2005 Nov; 66(11): 1167-73.
2. Engberts MK, Vermeulen CFW, Verbruggen BSM, van Haaften M, Boon ME, Heintz APM. Candida and squamous (pre)neoplasia of immigrants and Dutch women as established in population-based cervical screening. *Int J Gynecol Cancer* 2006; 16: 1596–1600.
3. Vermeulen CFW, Grünberg A, Peters AAW, Van der Linden-Narain IBS, Vrede MA, Krul EJT, Dekker FW, Fleuren GJ. Ethnic Patterns of Cytological Abnormalities in Cervical Smears in Suriname, a High-Risk Area for Cervical Cancer. *Acta Cytologica* 2006 Nov-Dec; 50(6): 621-6.
4. Vermeulen CFW, Boon ME, Grünberg A, Van der Linden-Narain IBS, Vrede MA, Dekker FW, Peters AAW, Fleuren GJ. Decreased Prevalence of Dysplasia in High-Risk Population Immigrants in a Low-Risk Area for Cervical Cancer. *Int J Gynecol Cancer* 2007 May-Jun; 17(3): 646-50.
5. Vermeulen CFW, Jordanova ES, Ter Haar NT, Kolkman-Uljee S, Miranda NF, Ferrone S, Peters AAW, Fleuren GJ. Expression and genetic analysis of transporter associated with antigen processing in cervical carcinoma. *Gynecological Oncology* 2007 Jun; 105(3): 393-9.
6. Vermeulen CFW, Jordanova ES, Szuhai K, Kolkman-Uljee S, Vrede MA, Peters AAW, Schuurring EMD, Fleuren GJ. Physical Status of Multiple Human Papillomavirus Genotypes in Flow-Sorted Cervical Cancer Cells. *Cancer Genetics and Cytogenetics* 2007 Jun; 175(2): 132-7.



Acknowledgements

The author of this thesis gratefully acknowledges all co-authors of the preceding chapters, the colleagues at the Department of Pathology, the Joenit, family, friends and the following people in particular for their contribution to and their discussion, advise, support and friendship during the realisation of this thesis:

Annemieke Bakker
 Thil Boon
 Hilly en Evert Bosch
 Tim Bosch
 Miet de Bosschere
 Lambert van den Broek
 Cees Cornelisse
 Wim Corver
 Anne Marie Cleton-Jansen
 Friedo Dekker
 Arko Gorter
 Micha Götz
 Antoon Grünberg
 Natalja ter Haar
 Klaas van der Ham
 Natacha Harlequin
 Suzanne Hazelbag

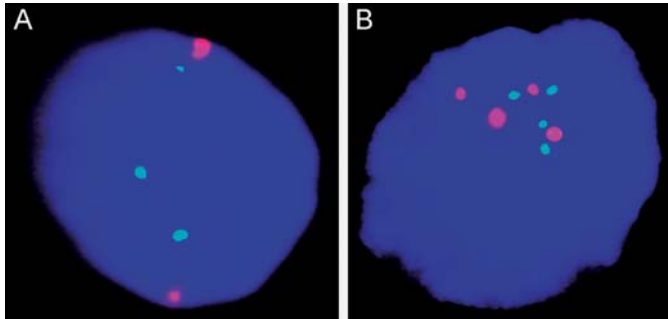
Alphons de Hooge
 Marian Kantebeen-Zoetemelk
 Anne-Marie Kersemaekers
 Karin Kleiverda
 Sandra Kolkman-Uljee
 Louise Koopman
 Alexander Mante
 Anne-Tjerk Mante
 Ingrid van der Linden-Narain
 Hans Morreau
 Leida Rozeman
 Evelyn Sweerts-Vermeulen
 Károly Szuhai
 Michiel van Zeeland
 Henry Zijlmans
 Yvon Zomerdijk-Nooyen





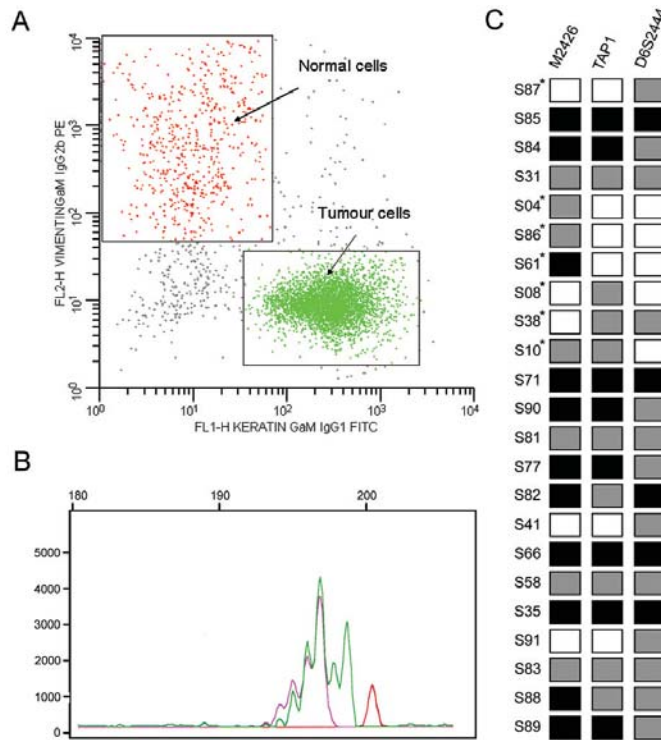
Colour section





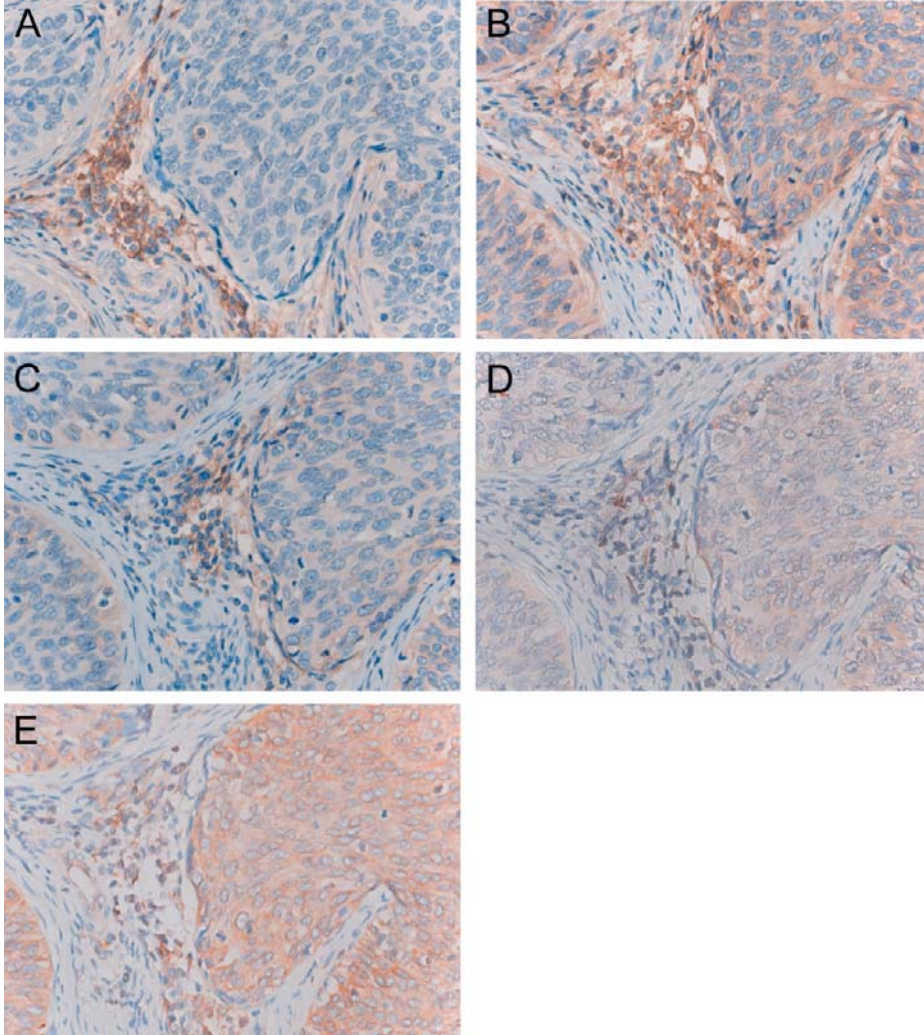
Chapter 4, FIGURE 2

Examples of the FISH results. **(A)** In case S77, FISH showed two centromeric signals and three signals of the whole HLA class I region in 16% of the nuclei, suggesting a possible duplication and translocation. **(B)** Example of aneusomy 6, found in most of the cases.



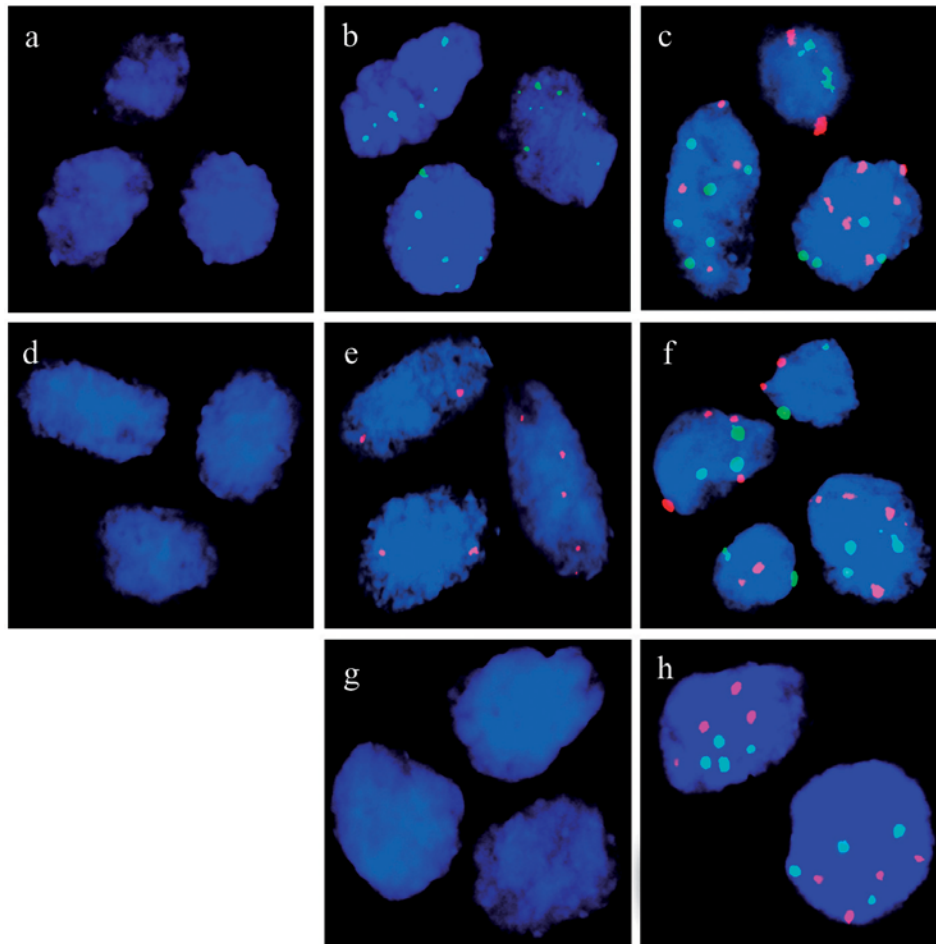
Chapter 5, FIGURE 3

LOH analysis results. **(A)** A representative example of flow-sorting data of a cervical cancer sample (S41). The keratin positive (tumour, FITC-labelled) cells and the vimentin positive (normal, PE-labelled) cells were flow-sorted and used in further analyses. **(B)** LOH results (S87) at marker TAP1 for tumour (pink, one peak) and normal (green, two peaks) sorted cell fractions (S87). A size marker is depicted in red. **(C)** The complete LOH data of the three microsatellite markers used per tumour sample, represented as ROH (black squares); LOH (white squares) and not informative (grey squares). The same order of samples is used as in **FIGURE 1**.



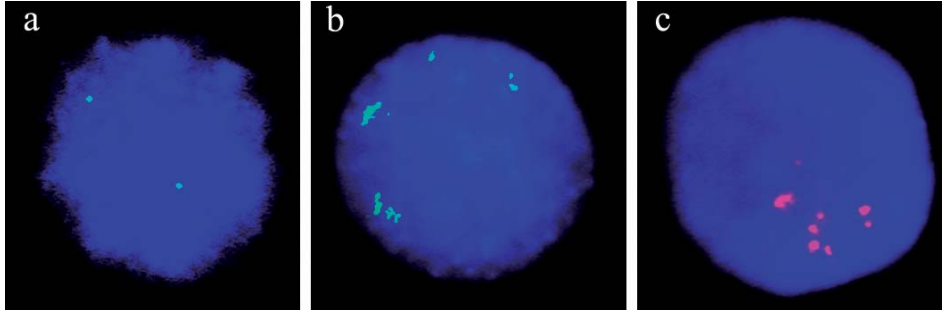
Chapter 5, FIGURE 2

Immunohistochemical staining of a cervical carcinoma lesion (sample S87). Detail (400x magnification) of the same group of tumour cells, stained with TAP1 (negative) (A); TAP2 (positive) (B); HLA-A (C) and HLA-B/C (D) (weak cytoplasm, negative membrane); β 2M (positive cytoplasm) (E).



Chapter 6, FIGURE 1

Interphase FISH on flow-sorted cervical carcinoma cells of the HPV 16/18 positive cases. Case 1 (A): the diploid cells are negative for HPV; (B) The aneuploid tumour cells show punctate signals for HPV 16 (green); (C) Control centromere 1 (red) and centromere 6 (green) signals. Case 2 (D): the diploid tumour cell fraction is negative for HPV; (E) The aneuploid tumour cells show punctate signals for HPV 18 (red); (F) Control centromere 1 (red) and centromere 6 (green) signals. Case 3 (G): the aneuploid tumour cell fraction is negative for HPV; (H) Control centromere 1 (red) and centromere 6 (green) signals.



Chapter 6, FIGURE 2

Interphase FISH on flow-sorted cervical cancer cell lines. (A) SiHa: 2 copies of HPV 16 are visible in green; (B) CaSki: multiple copies of HPV 16 are visible in green; (C) HeLa: multiple copies of HPV 18 are visible in red.