

Cover Page



Universiteit Leiden

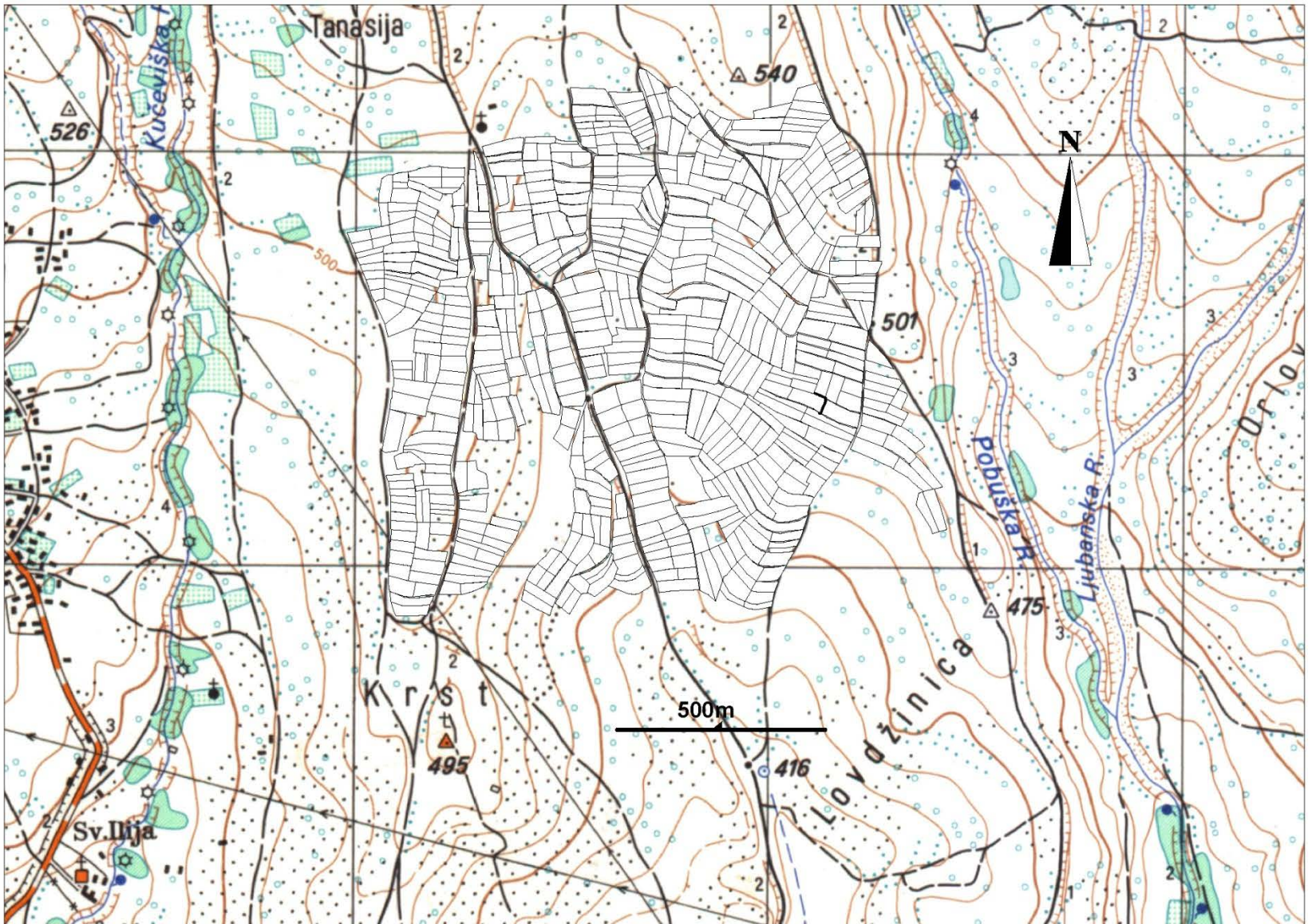


The handle <http://hdl.handle.net/1887/28917> holds various files of this Leiden University dissertation.

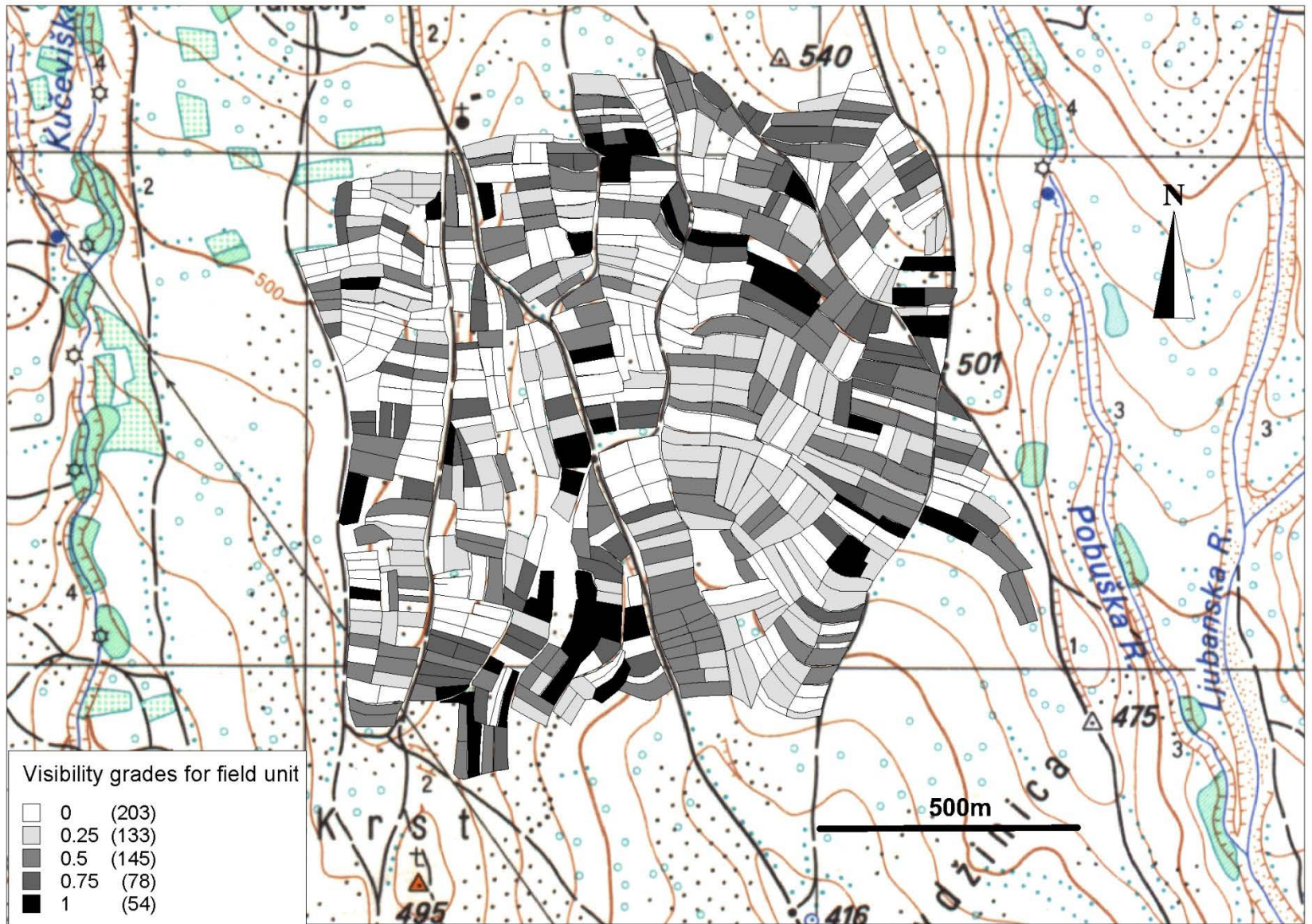
Author: Donev, Damjan

Title: Rural landscapes along the Vardar Valley: two site-less surveys near Veles and Skopje, the Republic of Macedonia

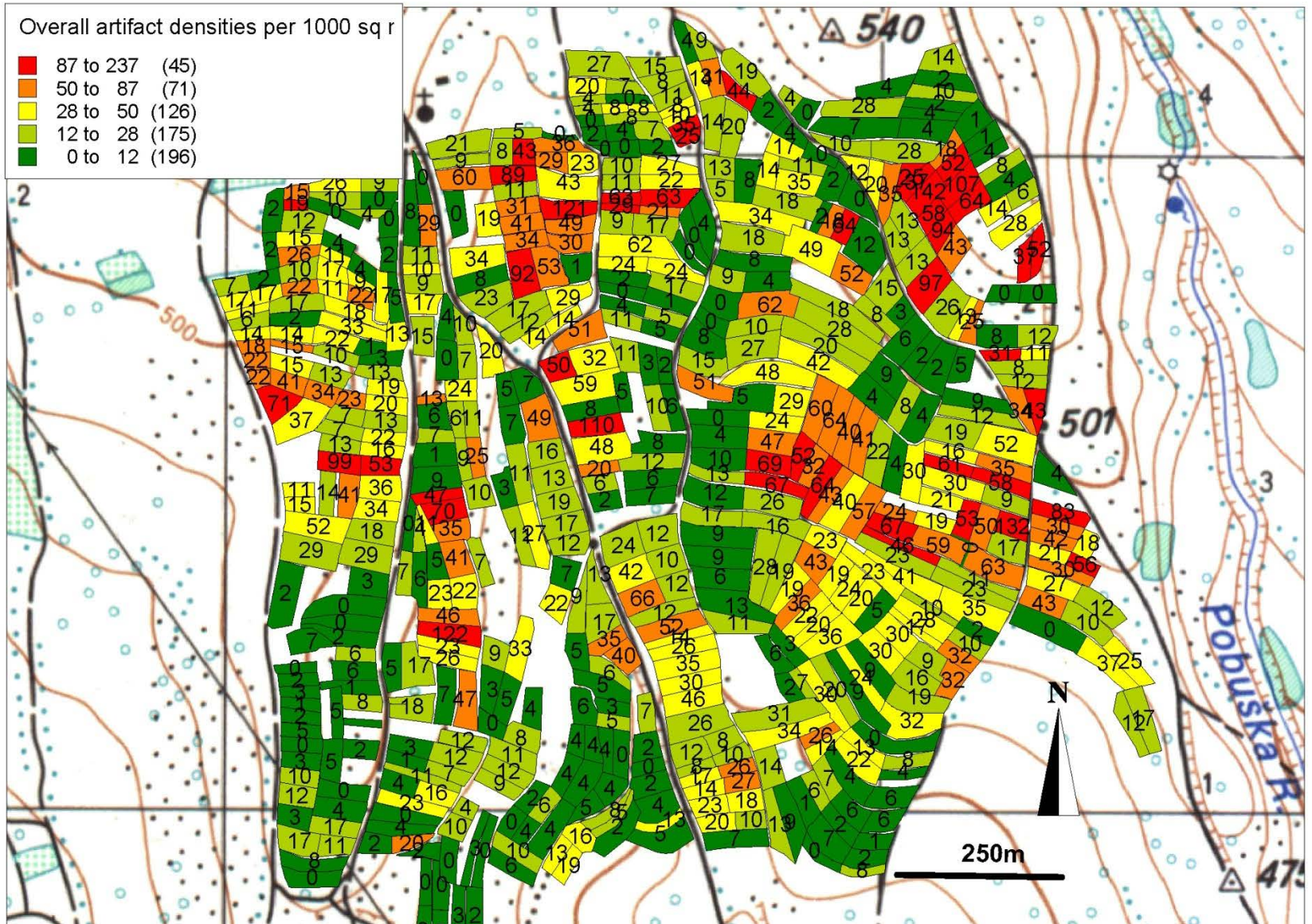
Issue Date: 2014-09-24



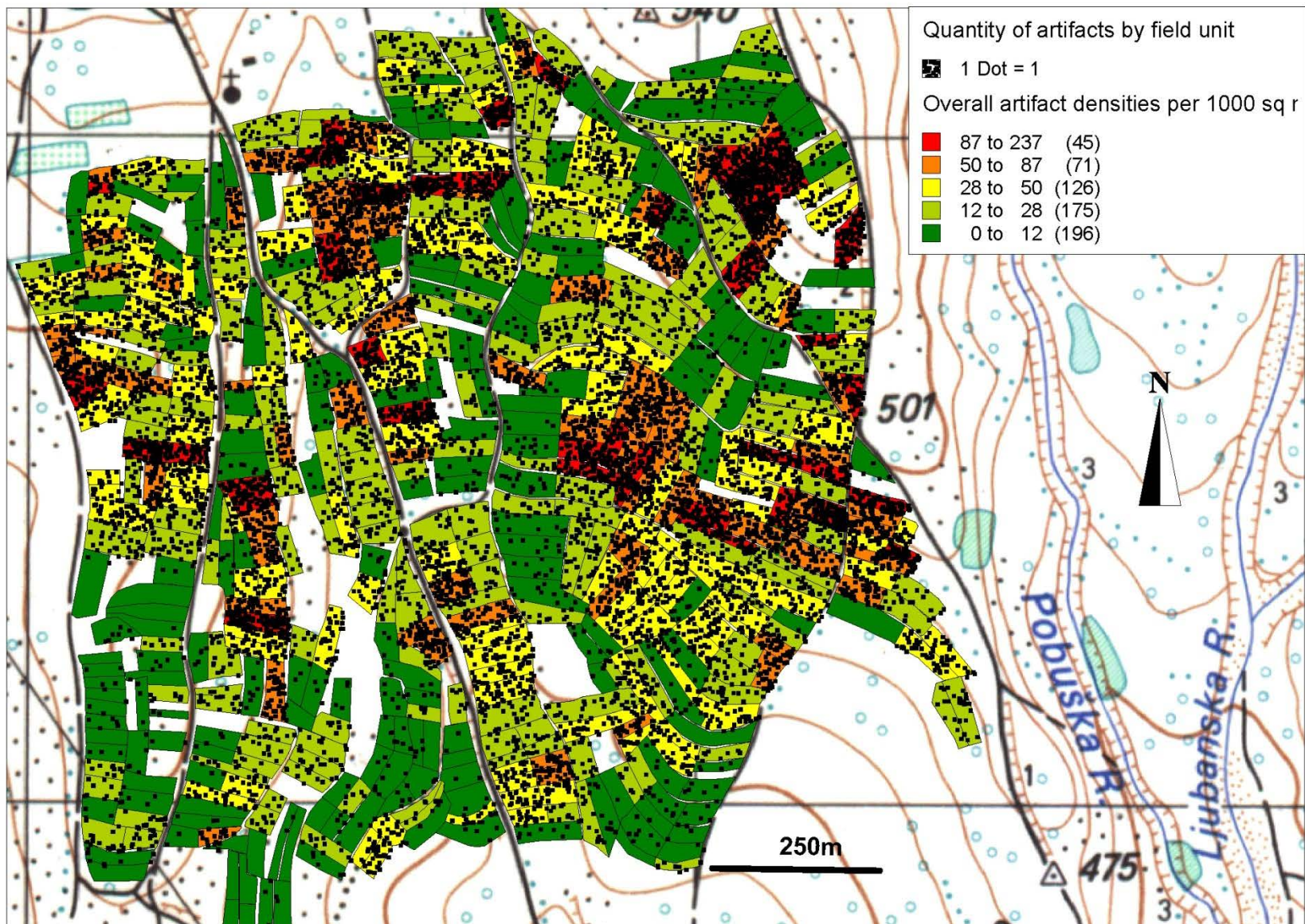
Map 1: Division of the survey area into field blocks



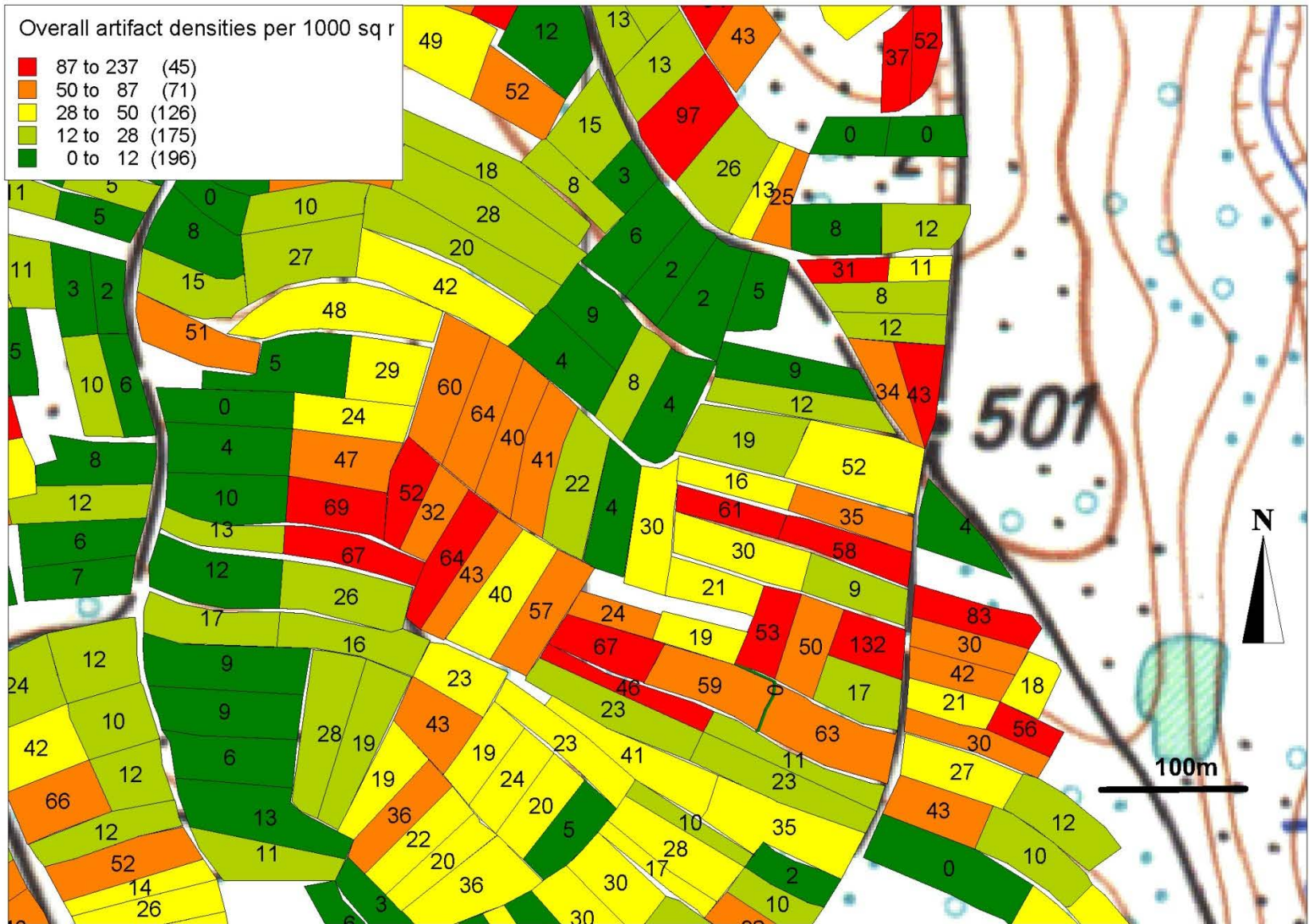
Map 2: Ground visibility conditions in the second survey area



Map 3: Distribution of the overall surface record in the second survey area



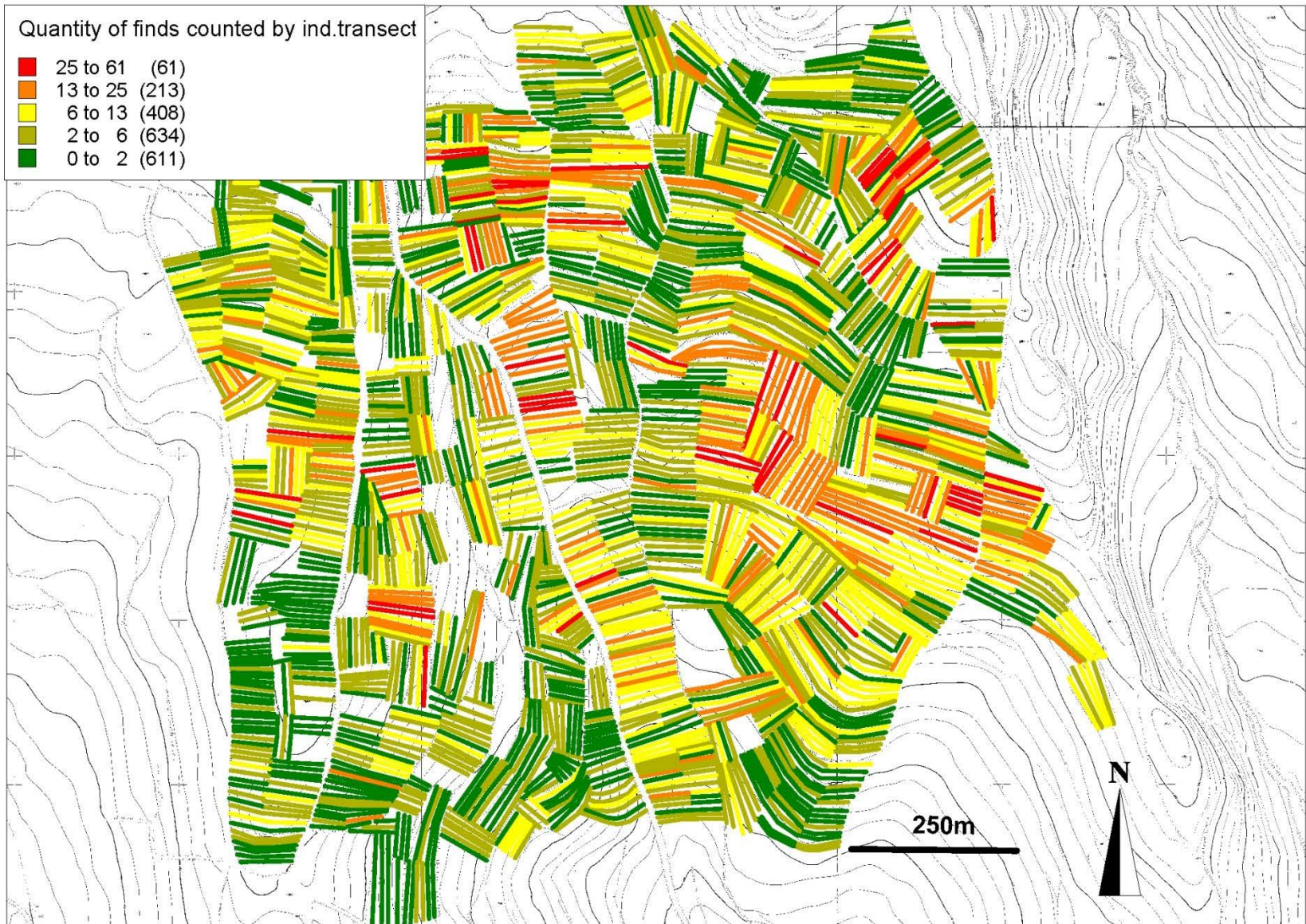
Map 4: Distribution of the overall surface record, density ranges and quantity



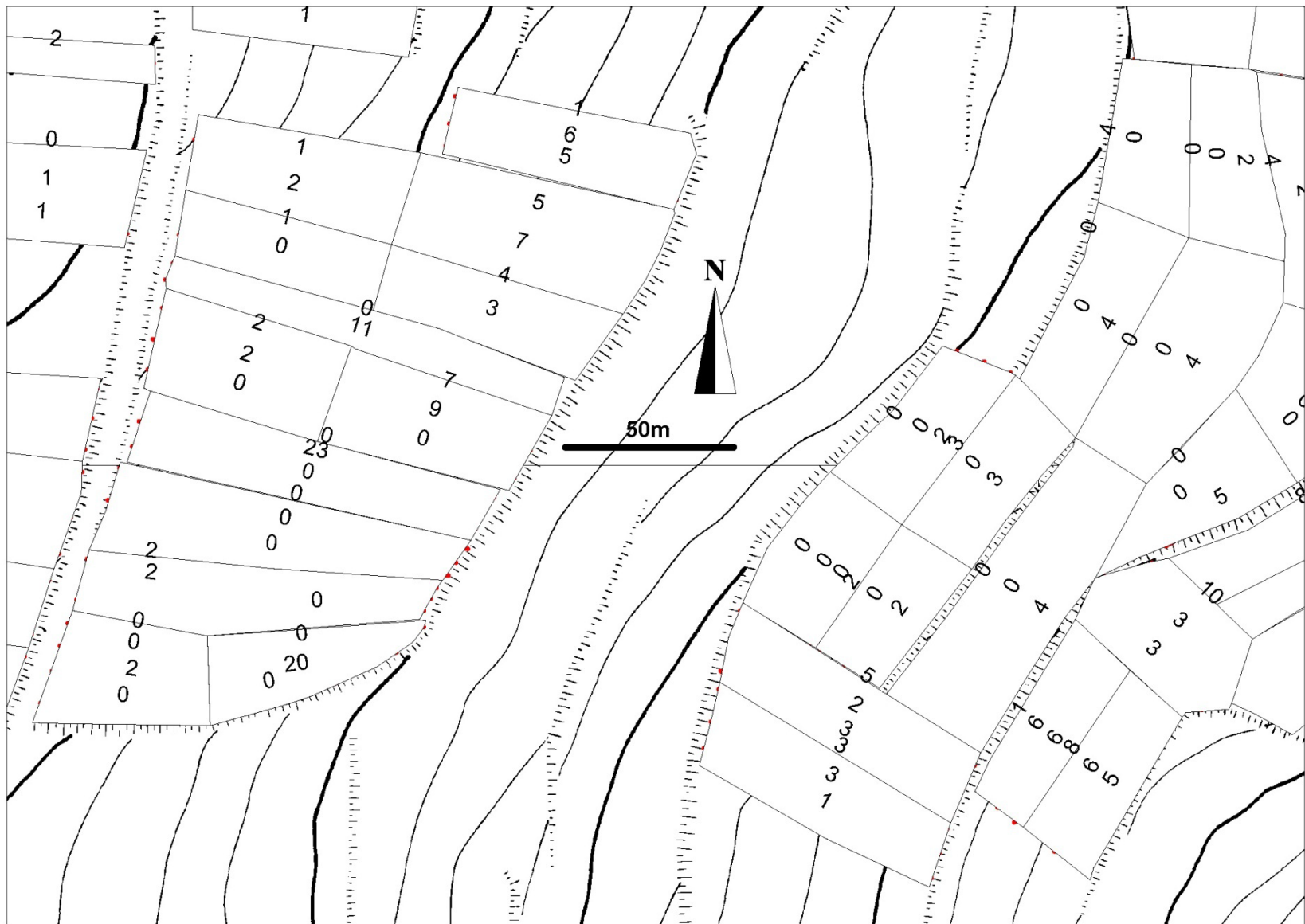
Map 5: Distribution of the overall surface record on the northern half of the eastern ridge

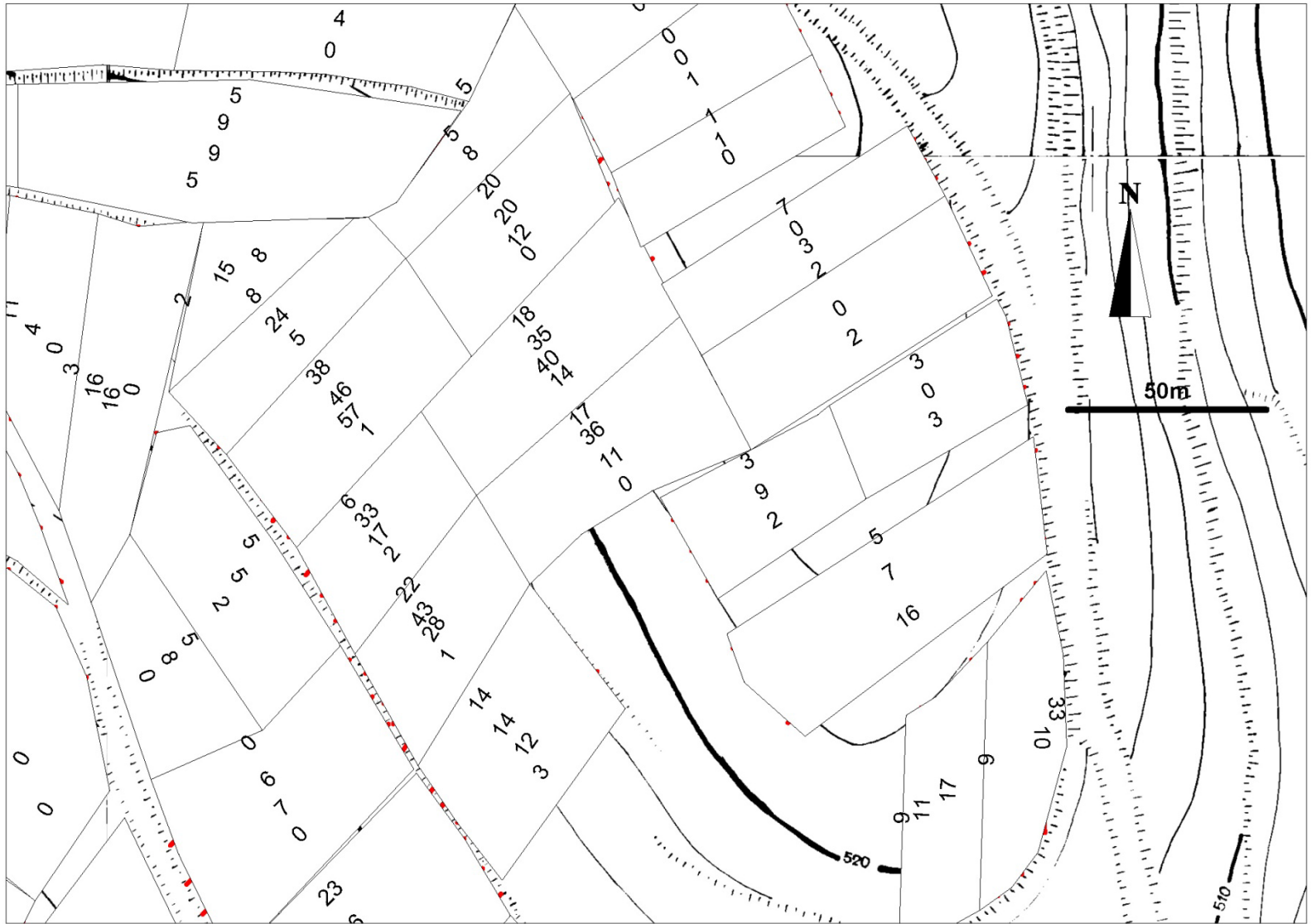


Map 6a: Distribution of the overall surface record in the southwest survey section

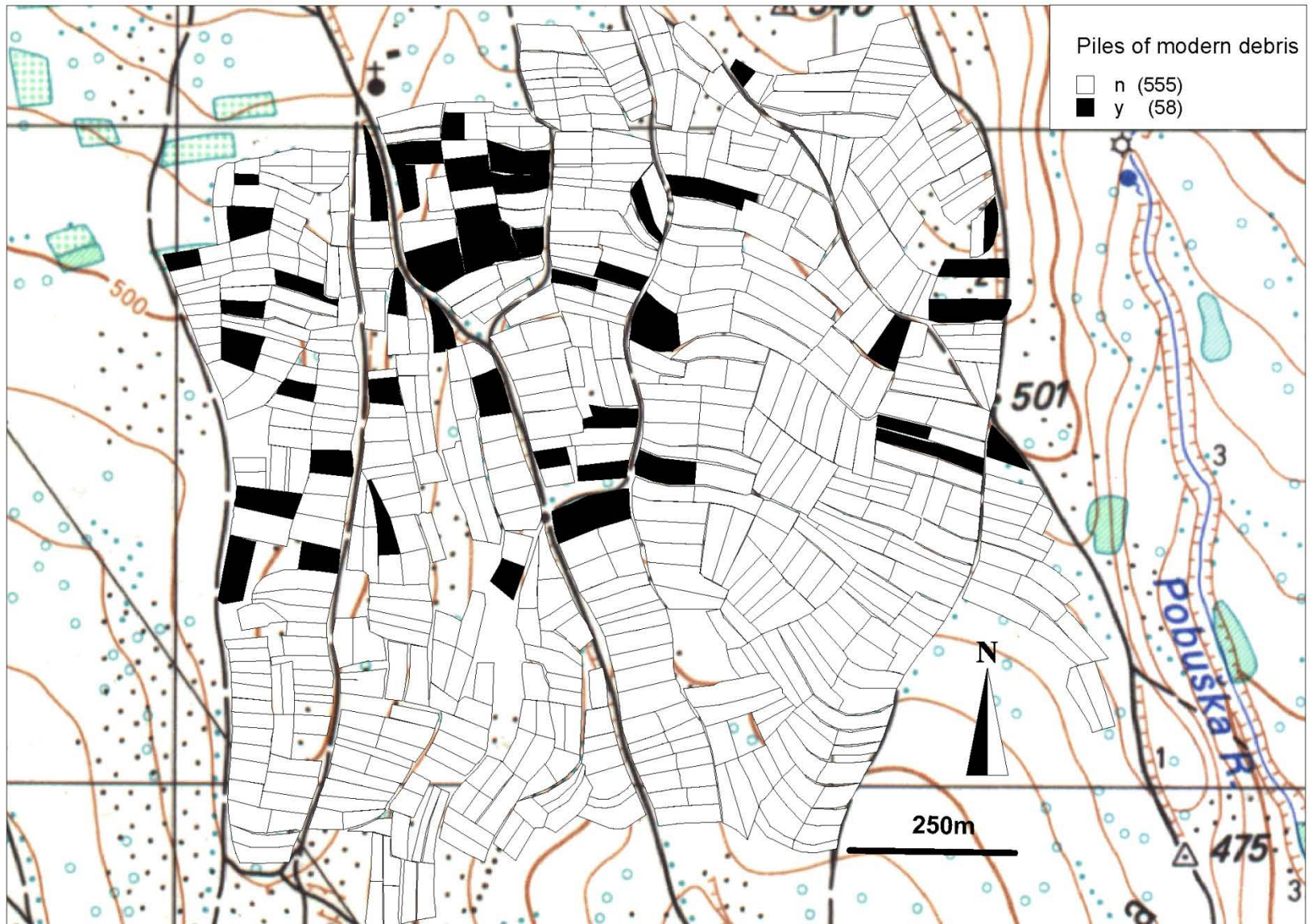


Map 7: Distribution of the overall surface record by individual transect units





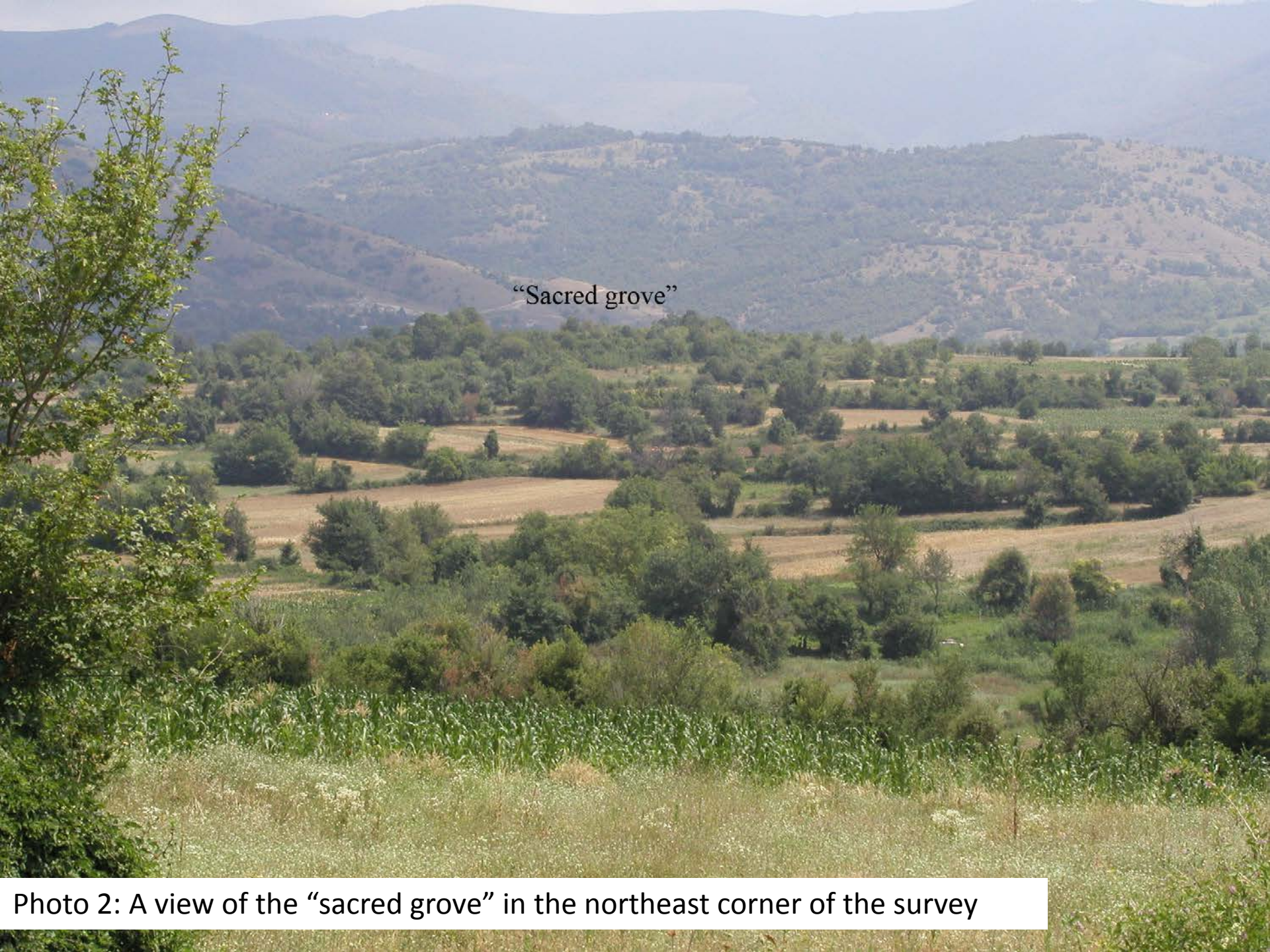
Map 9: The northeast corner of the area, number of sherds per individual field walking transects.



Map 10: Distribution of the piles of modern rubbish



Photo 1: An isolated cross on the eastern survey limit

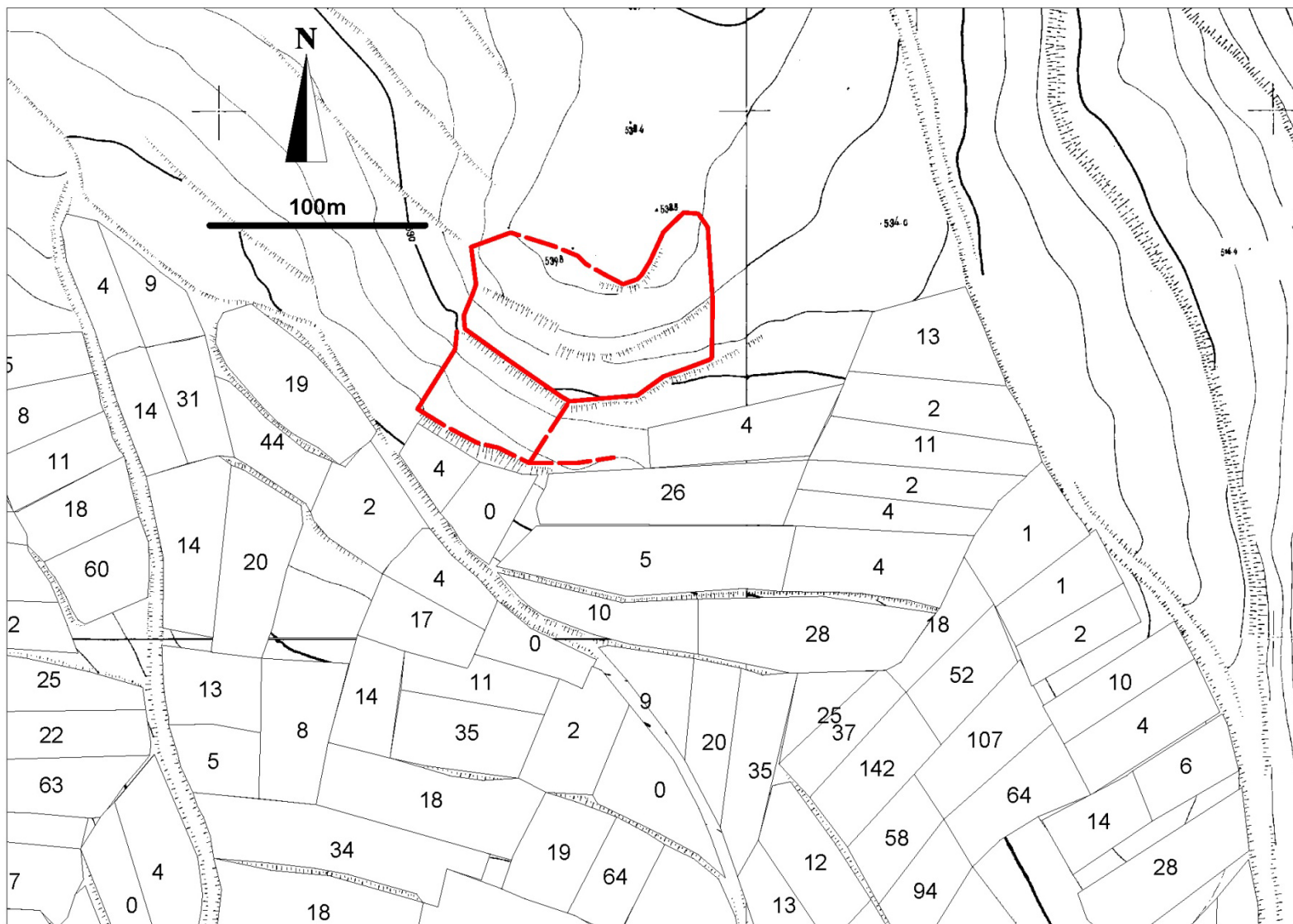


“Sacred grove”

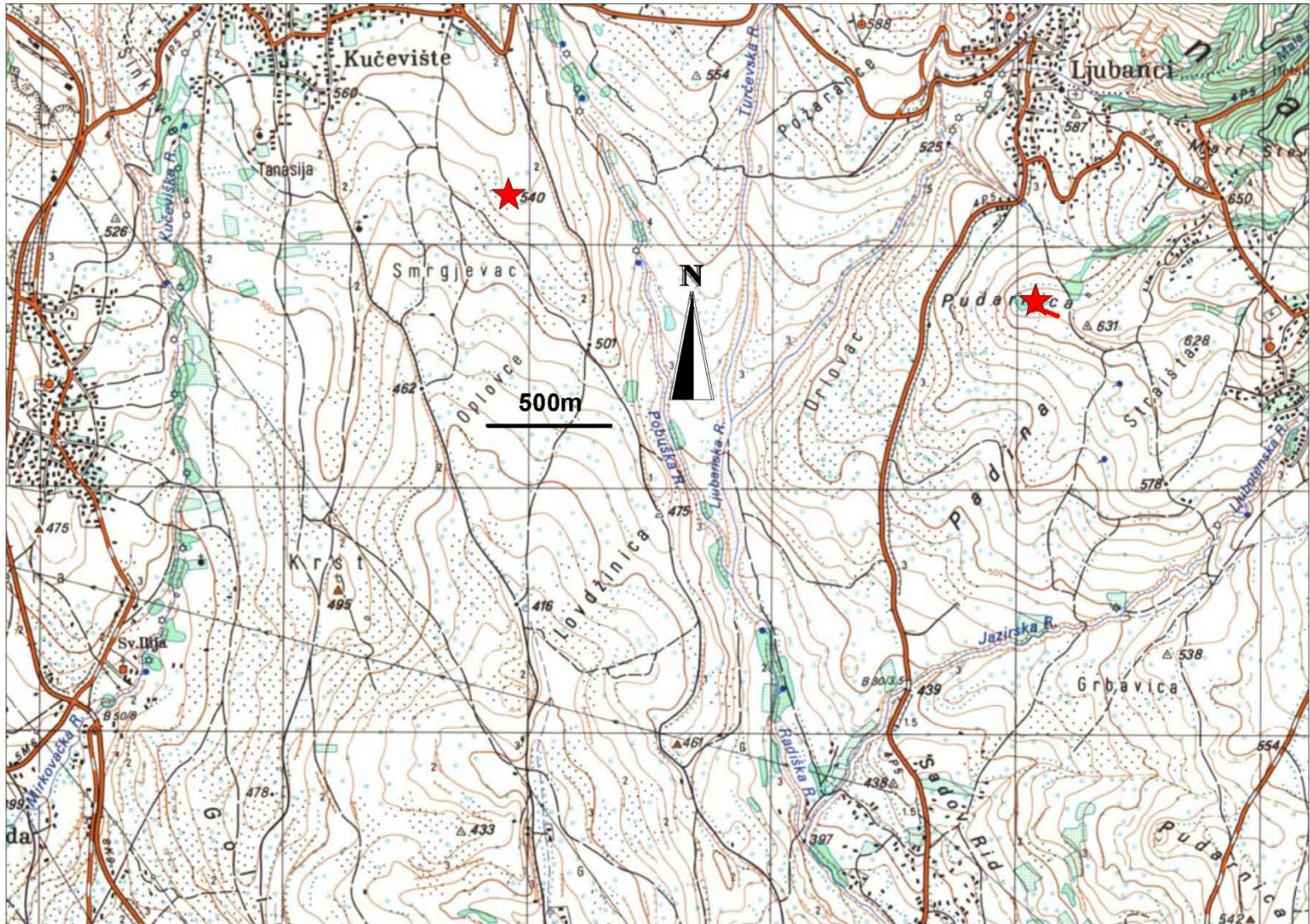
Photo 2: A view of the “sacred grove” in the northeast corner of the survey

Photo 3: The western wall of the fortification

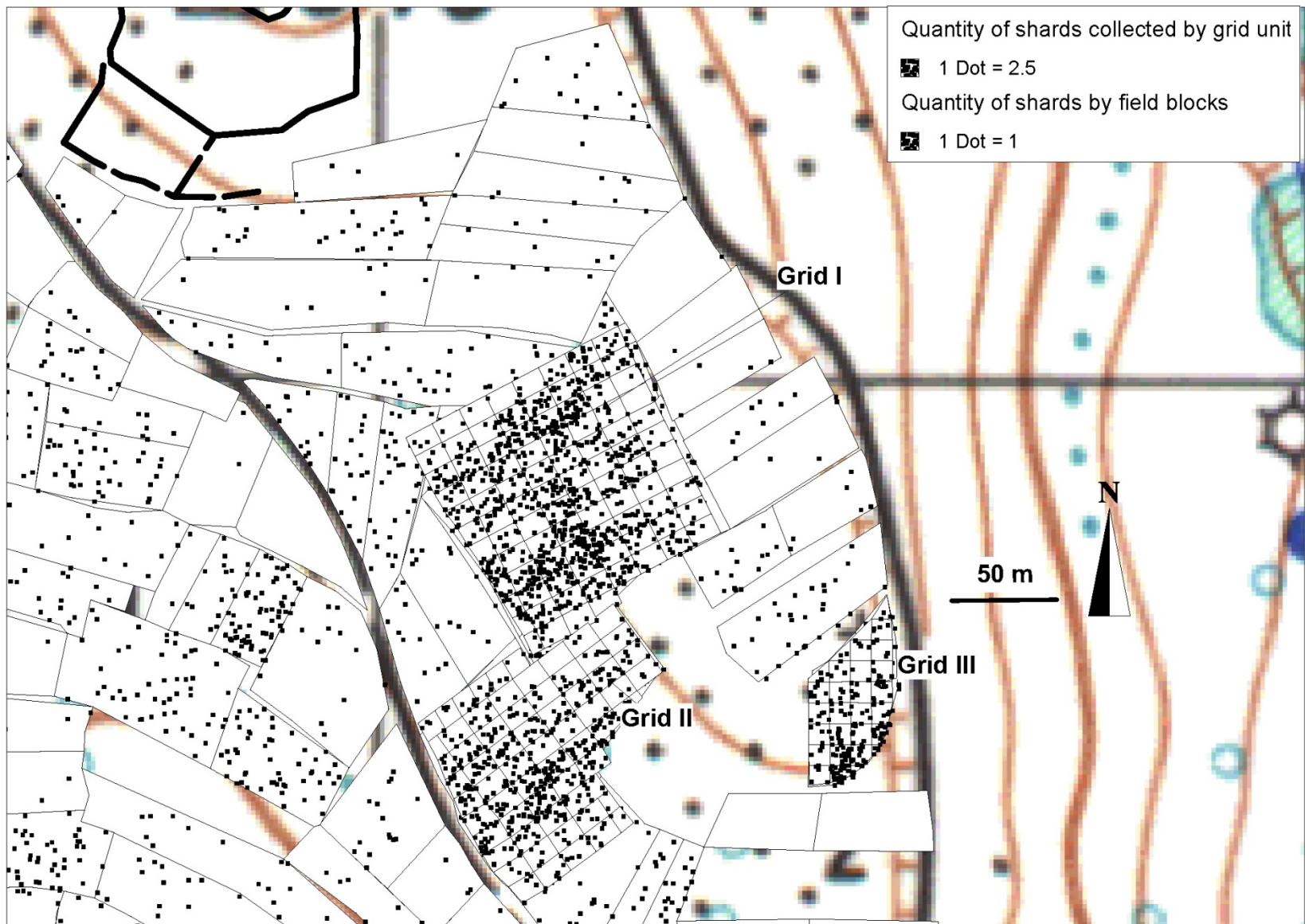




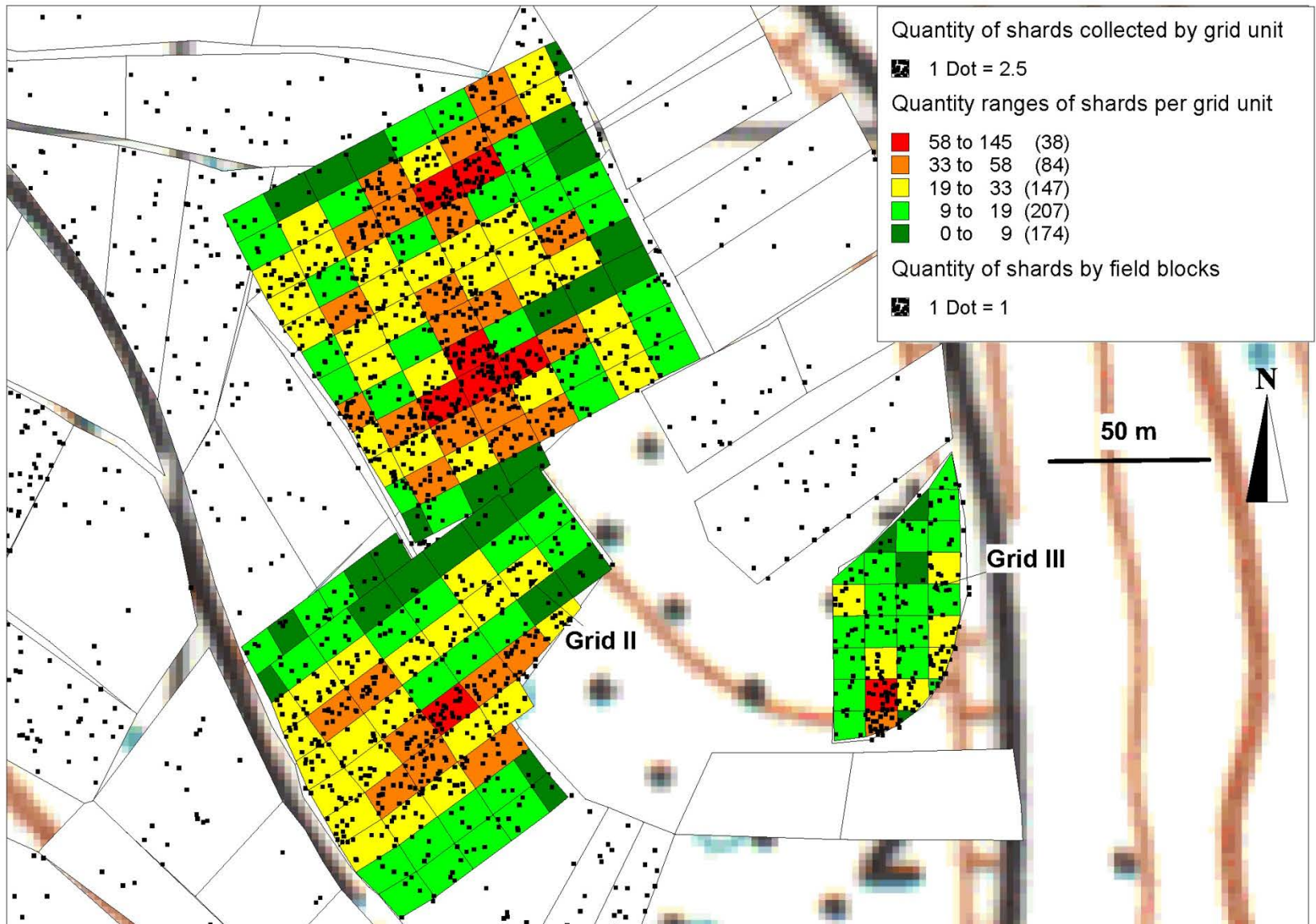
Map 11: Plan of the fort in the northeast corner of the area; interrupted lines indicate missing sections.



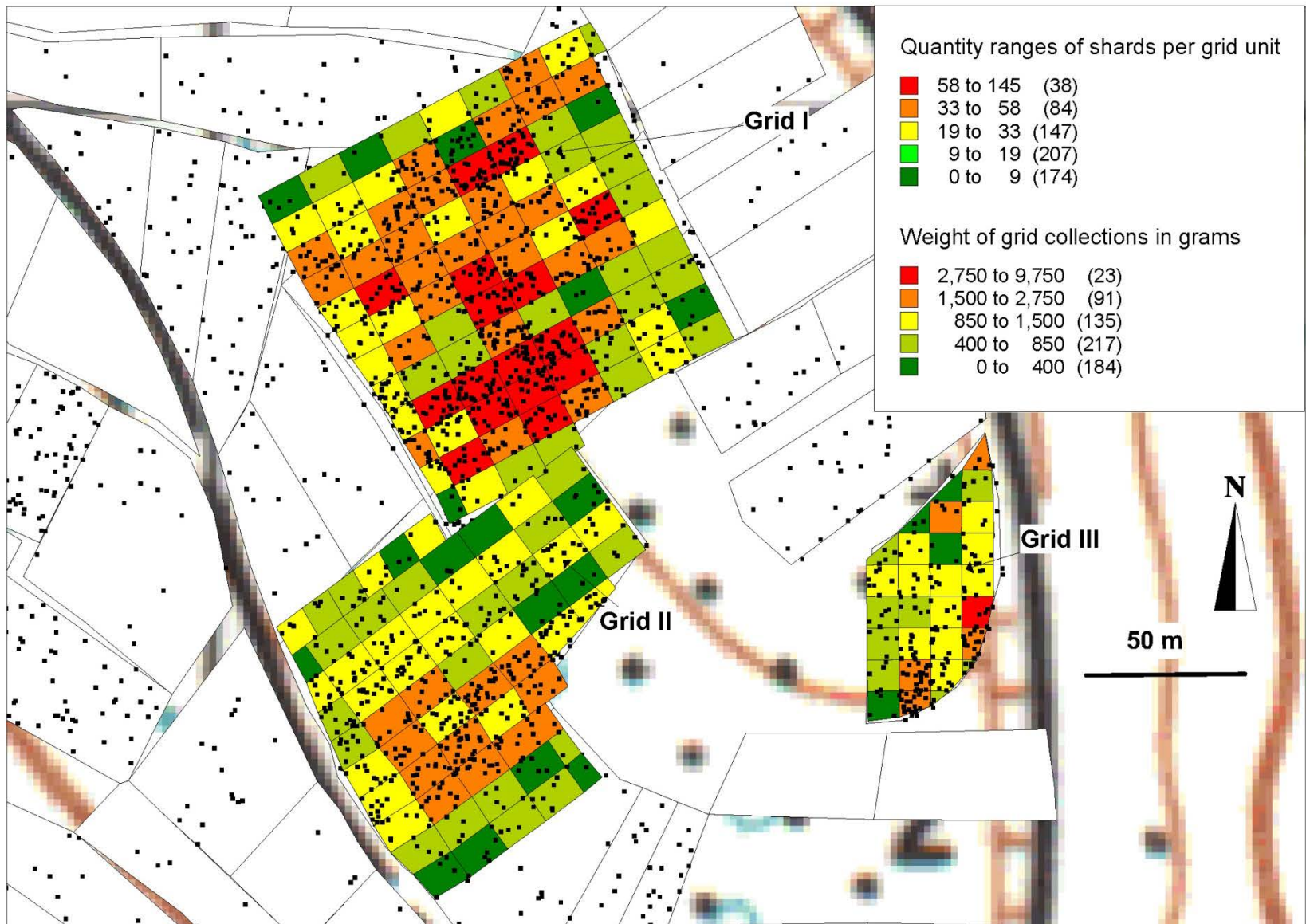
Map 12: The location of the two forts in the area of the foothills.



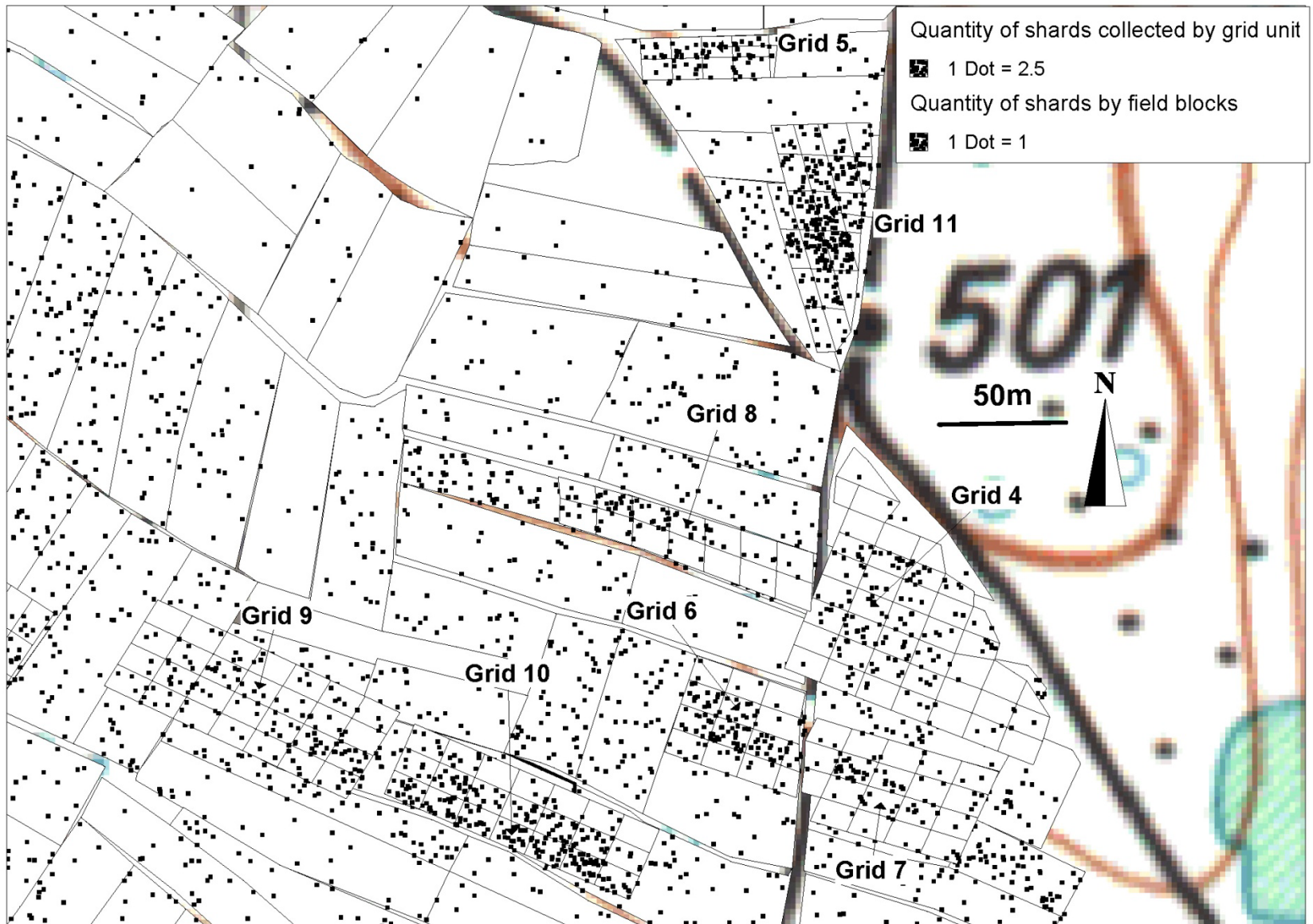
Map 13: Distribution of the overall surface record on grids I-III, grid and transect units



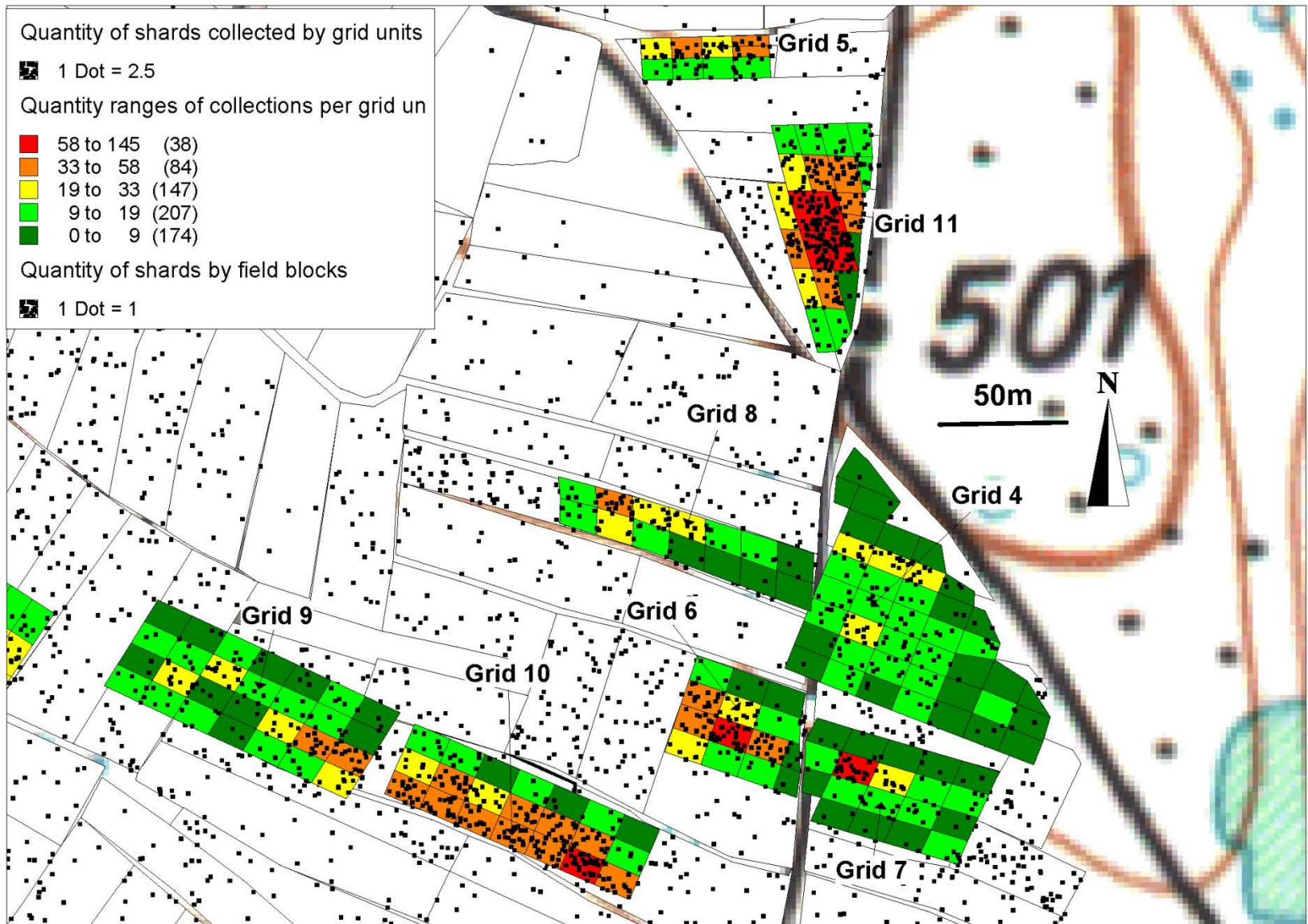
Map 14: Distribution of the overall surface record on grids I-III, quantity ranges



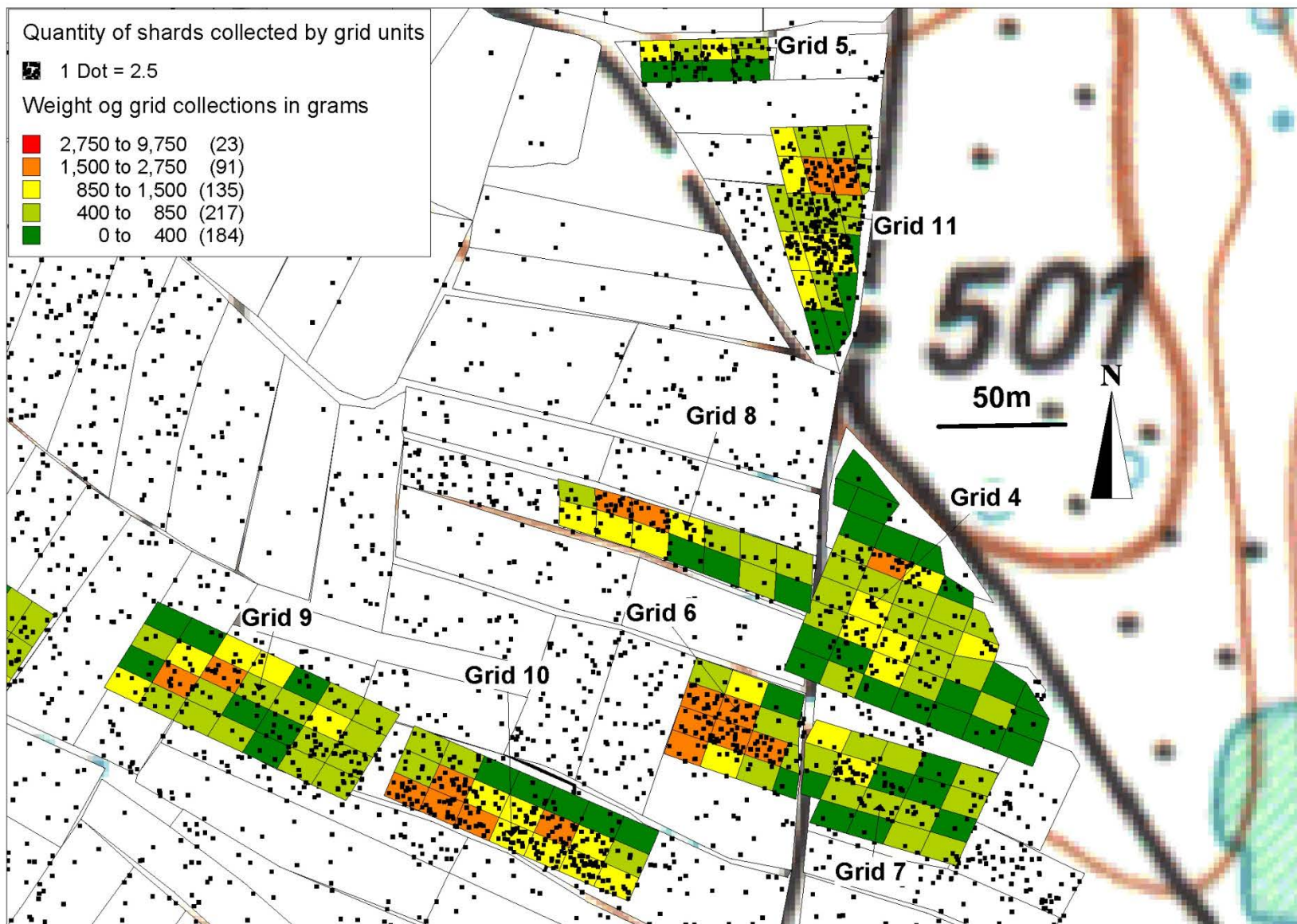
Map 15: Weight distribution of the total collections from grids I-III



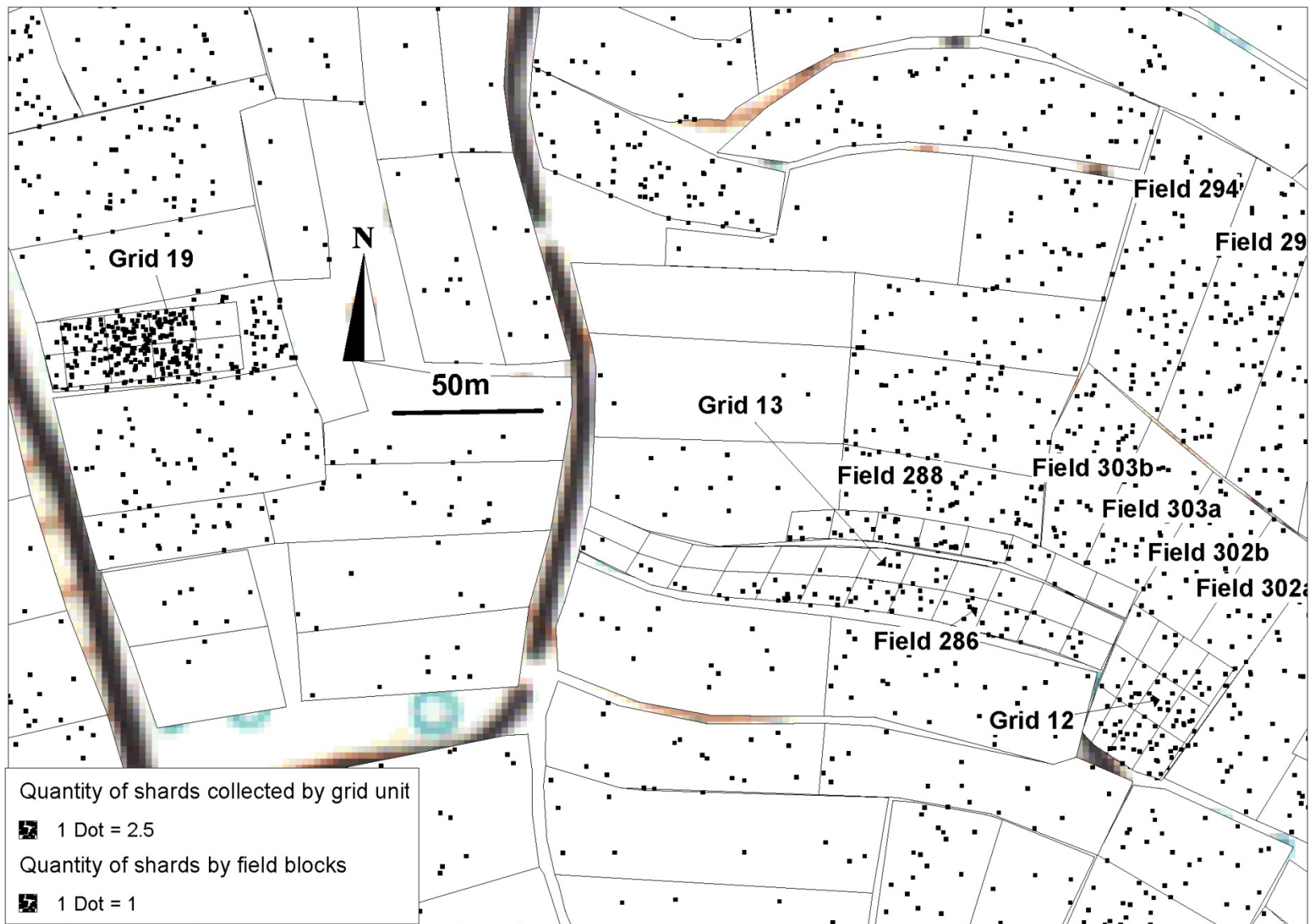
Map 16: Distribution of the overall surface record on grids 4-11 and the surrounding fields



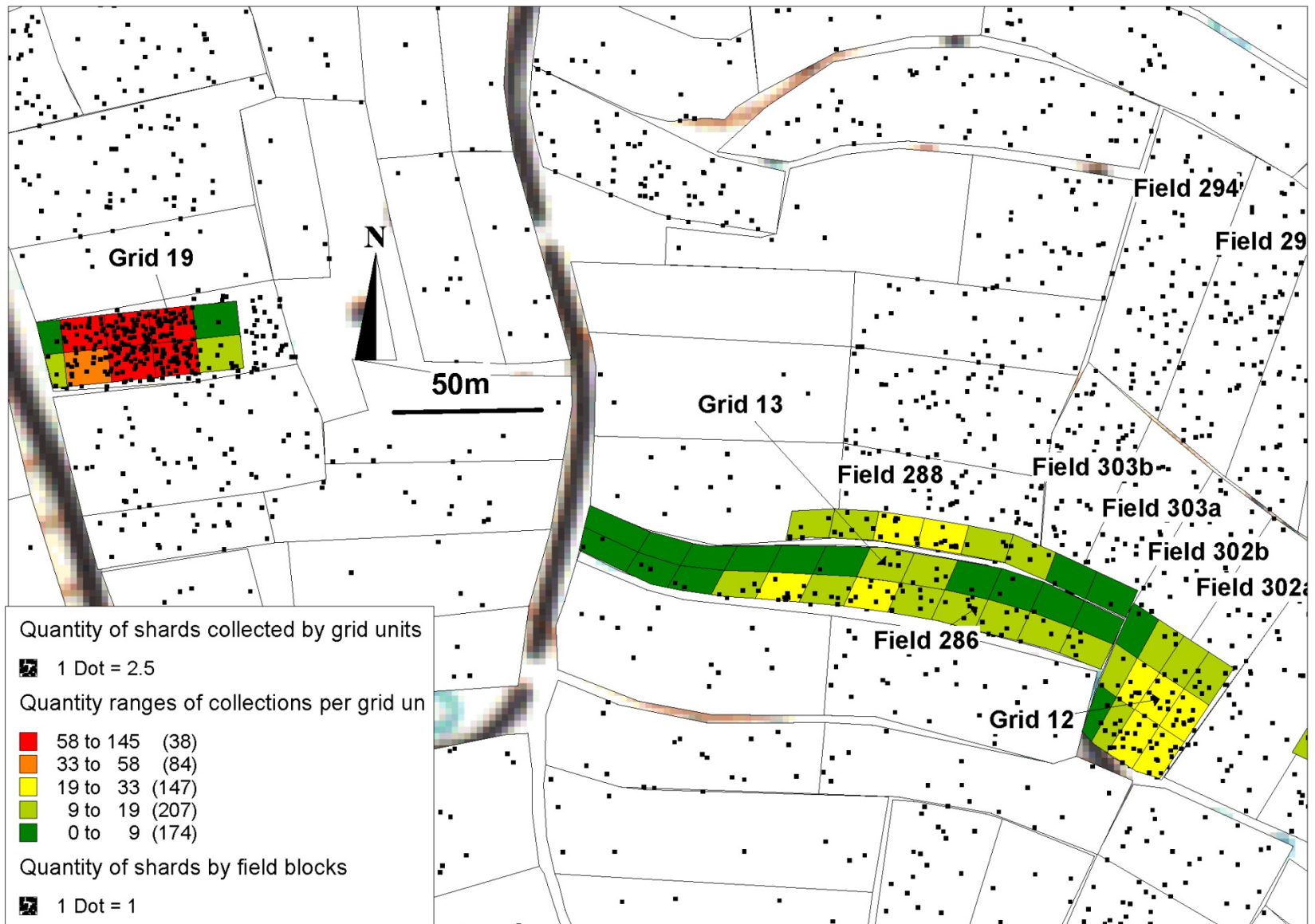
Map 17: Distribution of the overall surface records on grids 4-11, quantity ranges



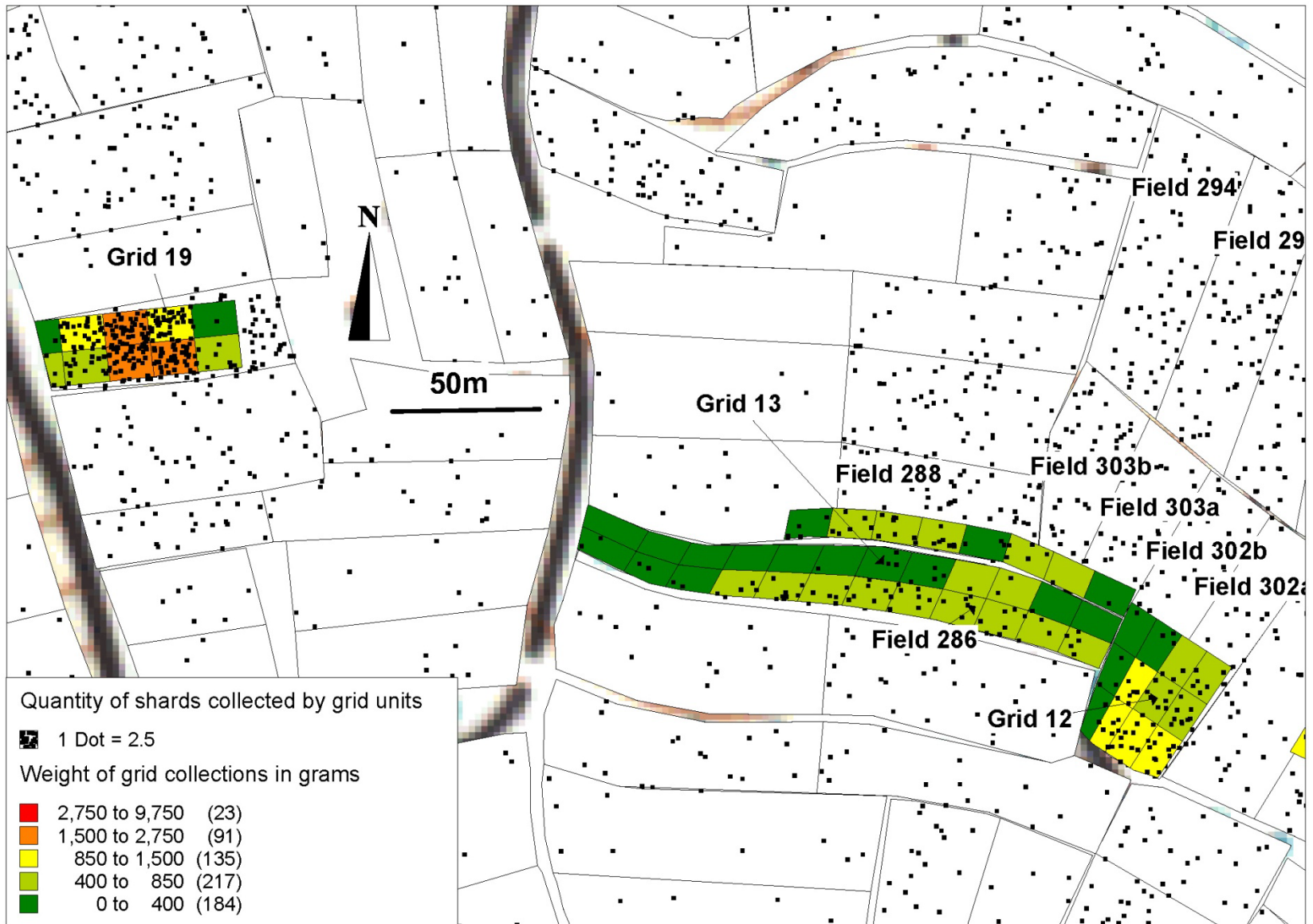
Map 18: Weight distribution of the total collections from grids 4-11



Map 19: Distribution of the overall surface record on grids 12, 13 and 19 and on the surrounding fields



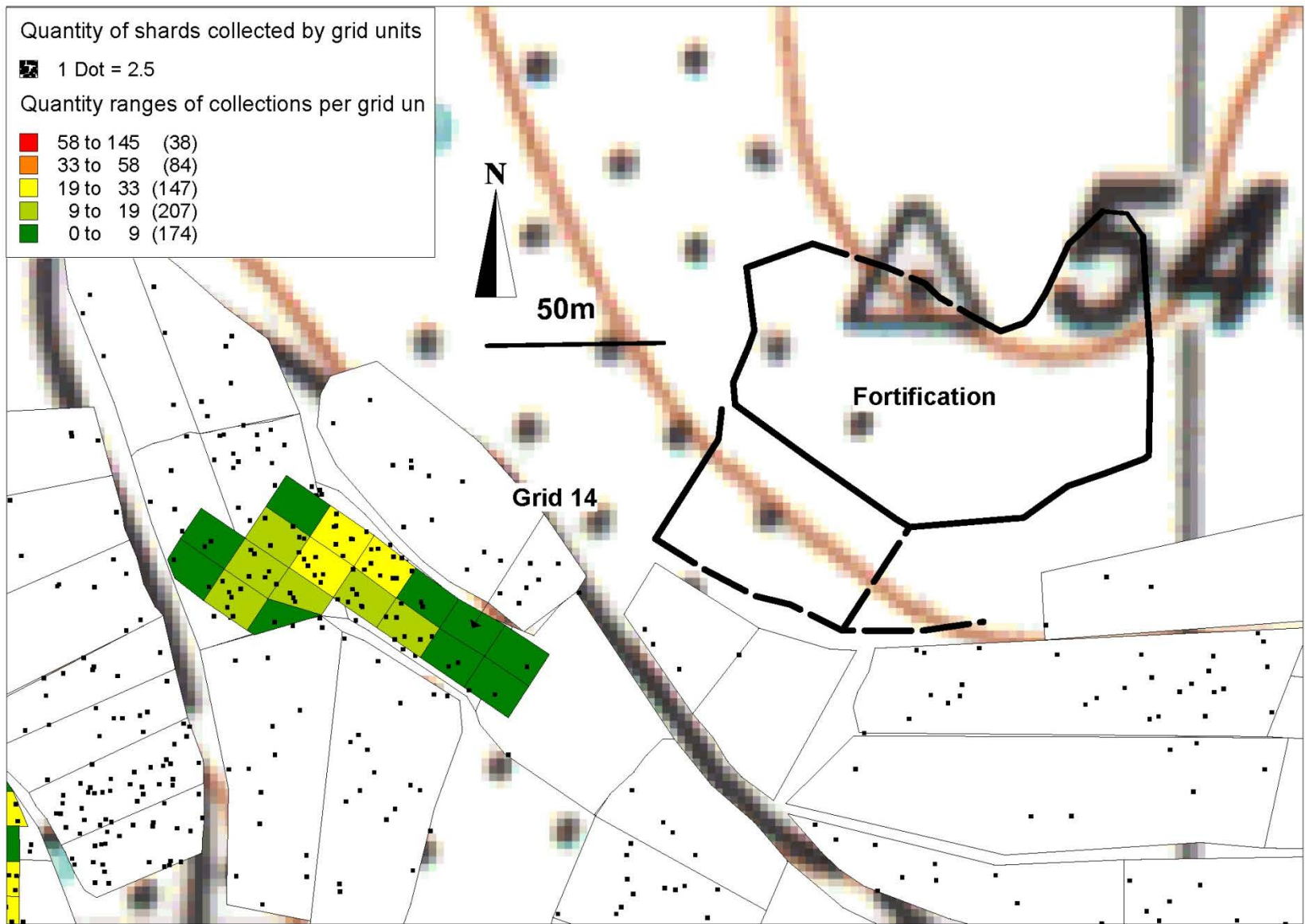
Map 20: Distribution of the overall surface record on grids 12-13 and 19, quantity ranges



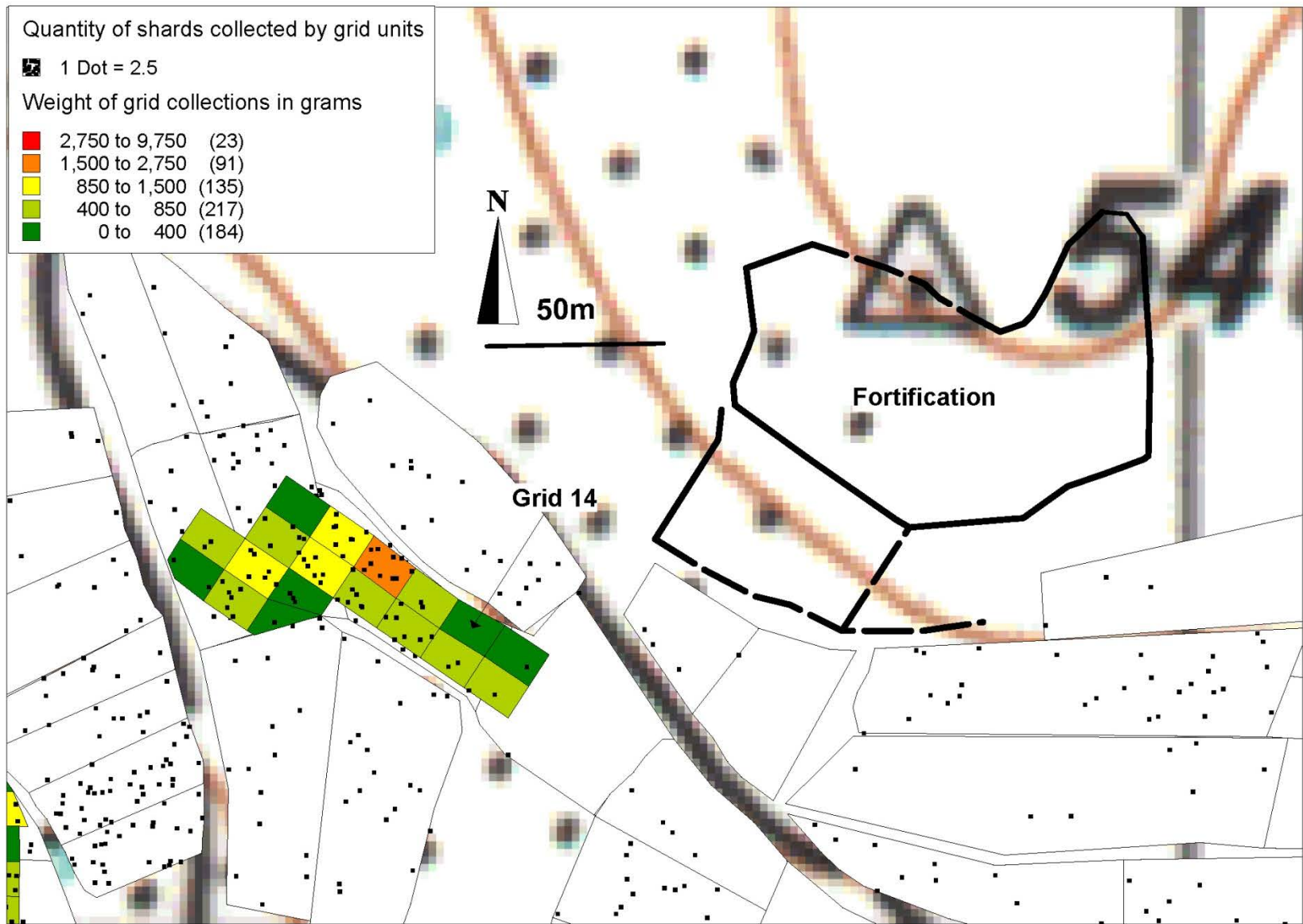
Map 21: Weight distribution of the total collections from grids 12, 13 and 19



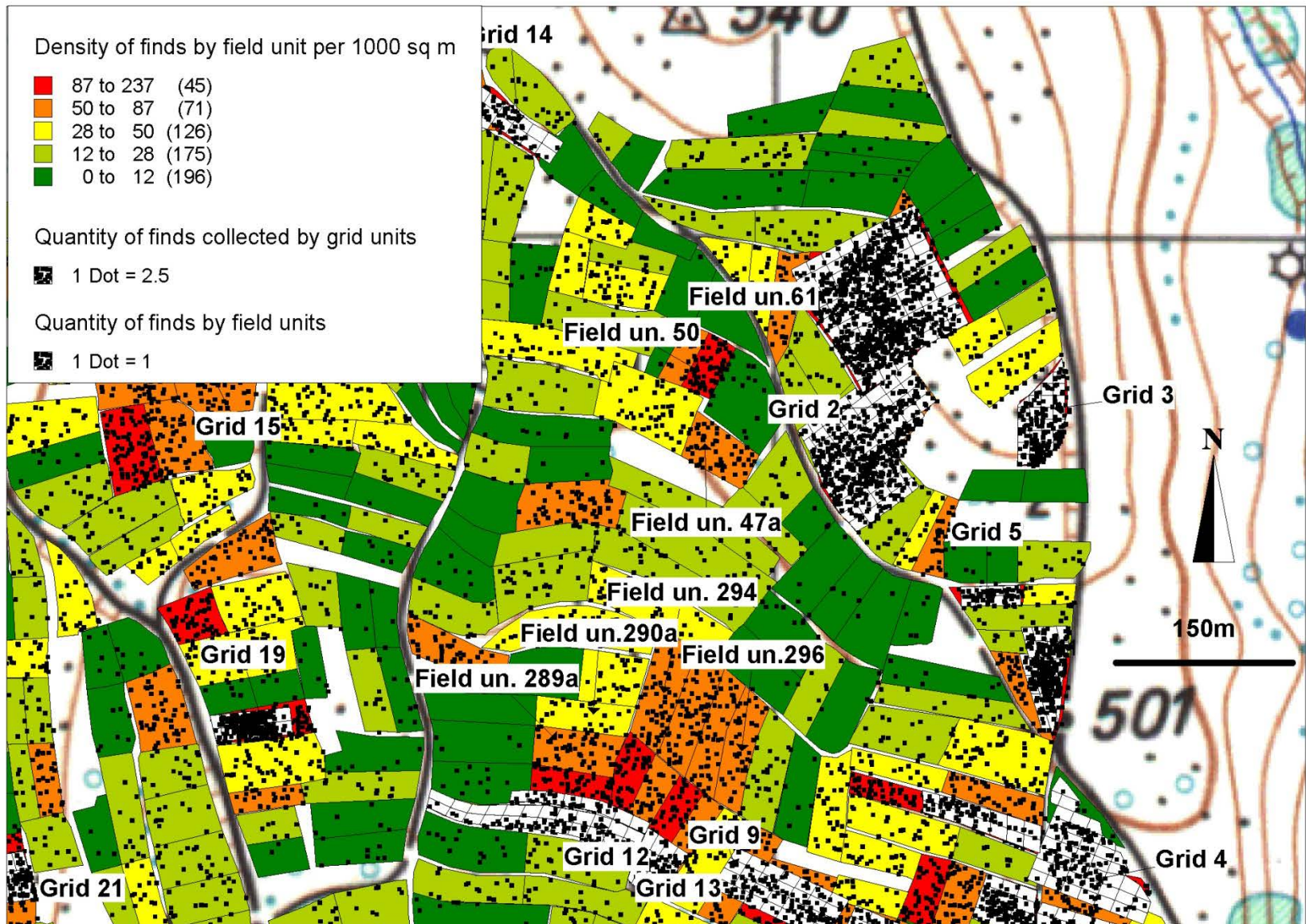
Map 22: Distribution of the overall surface record on grid 14 and the surrounding fields



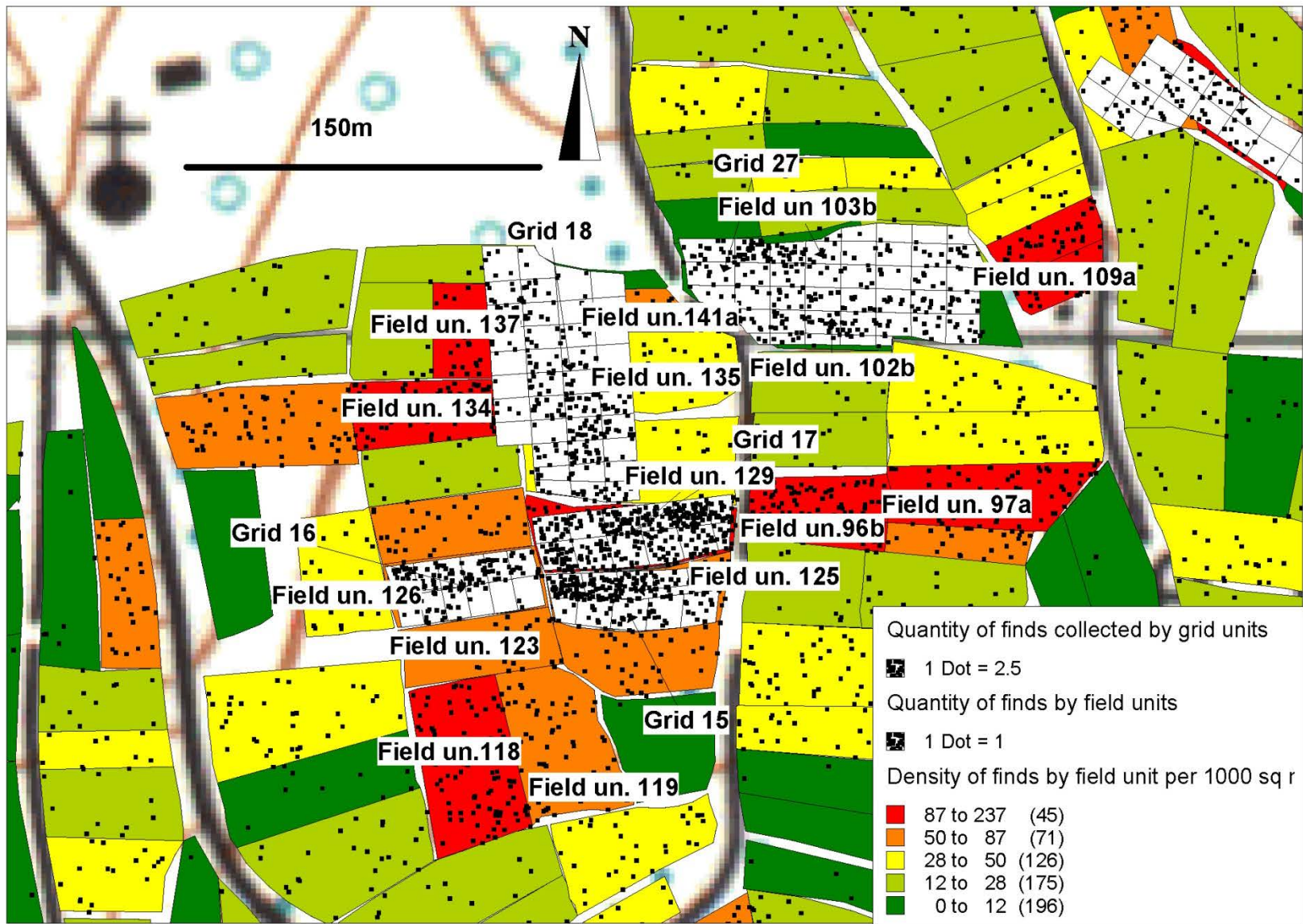
Map 23: Distribution of the overall surface record on grid 14, quantity ranges



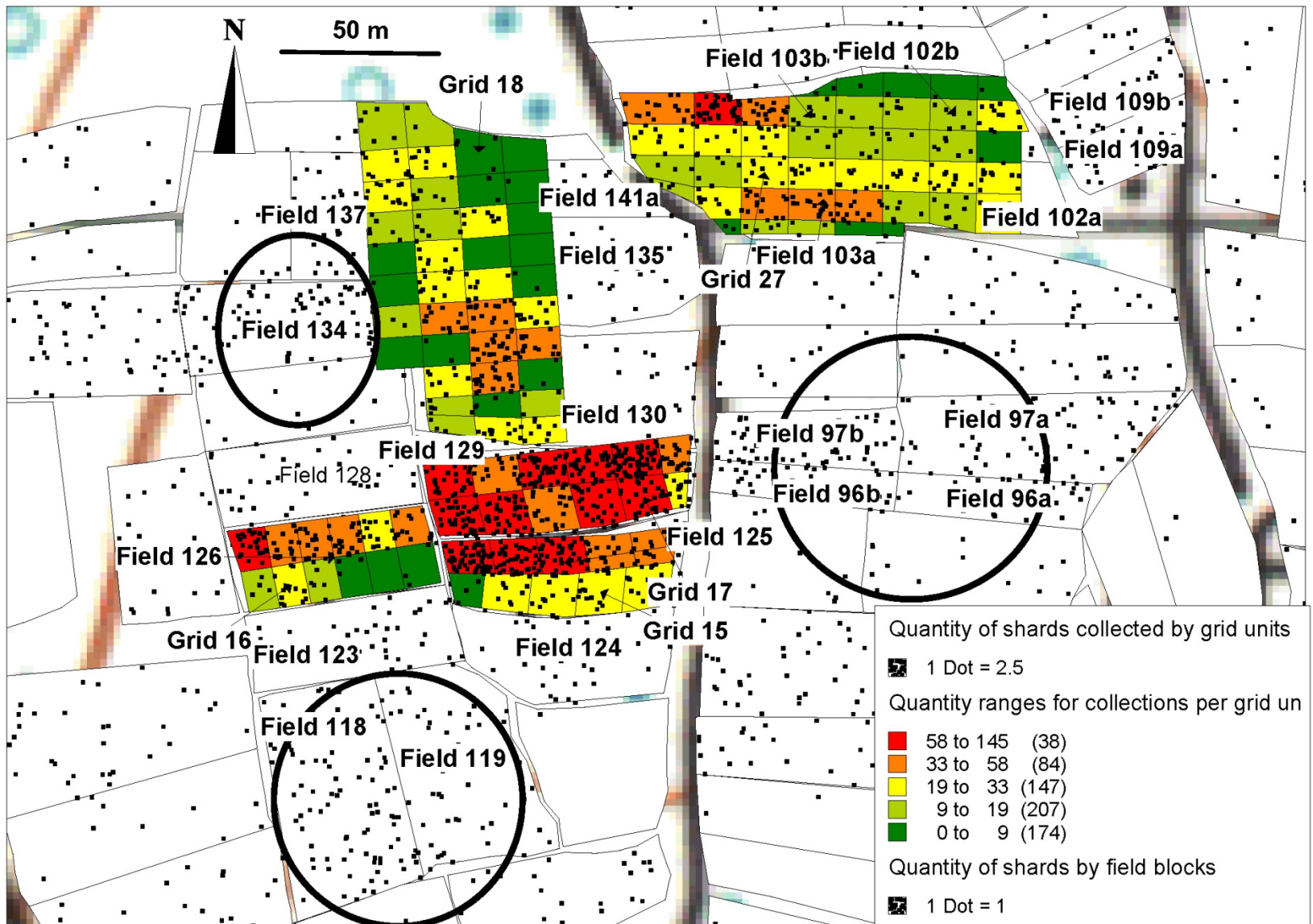
Map 24: Weight distribution of the total collections from grid 14



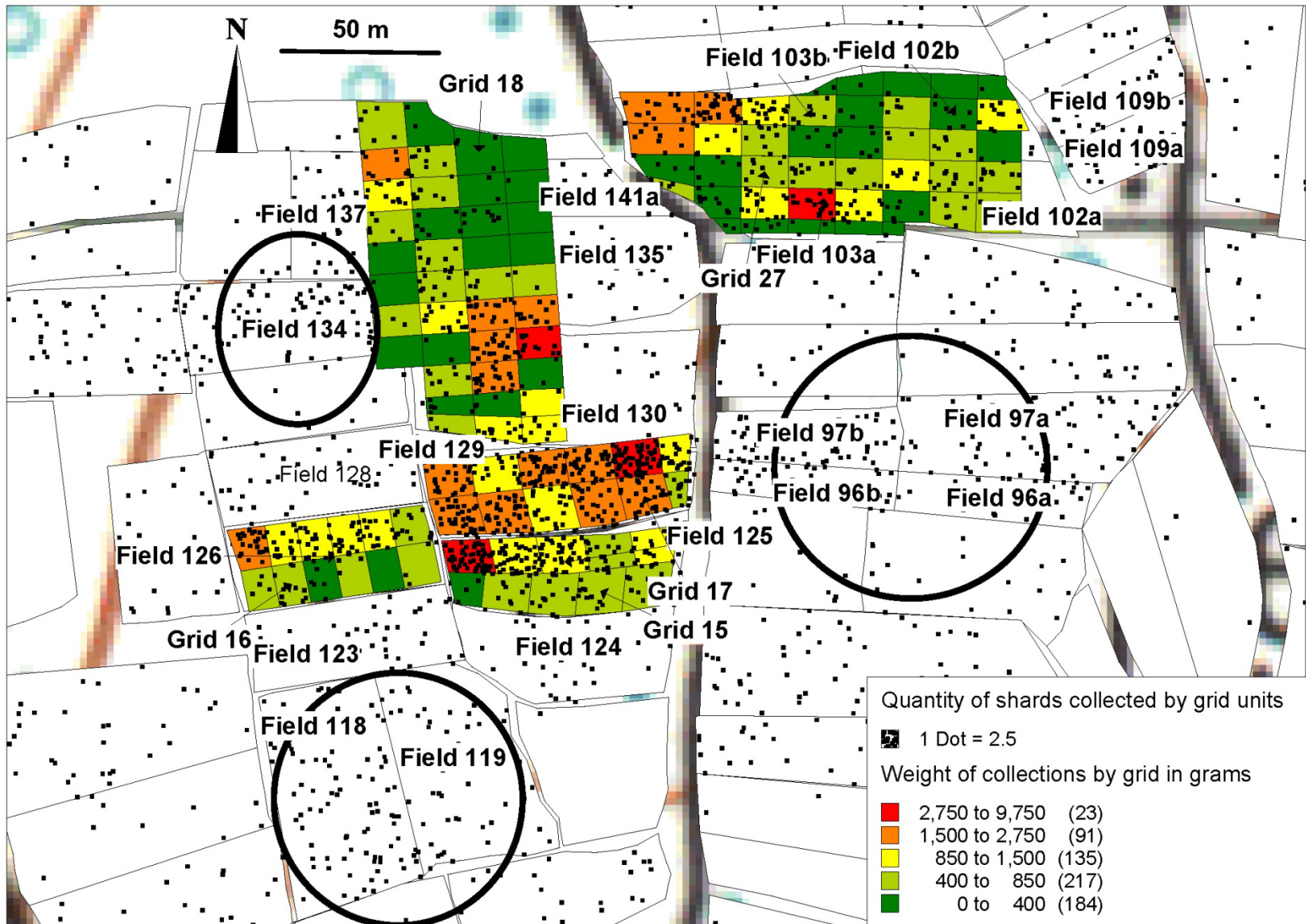
Map 25: Distribution of the overall surface record in the northeast and central parts of the survey area



Map 26: Quantity of the overall surface record in the central north survey section, grid and transect



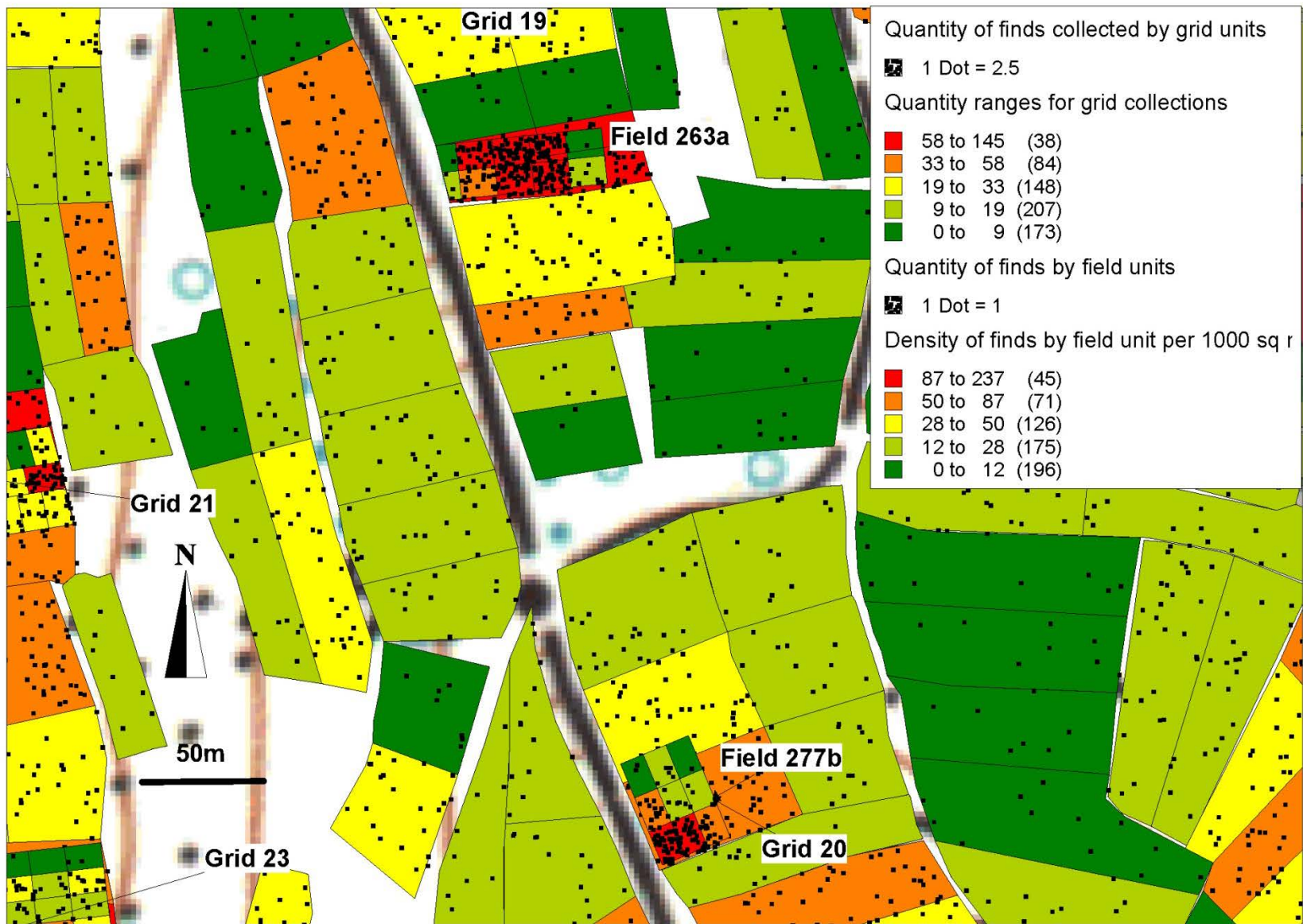
Map 27: Distribution of the overall surface record, quantity ranges for grids 15-18 and 27



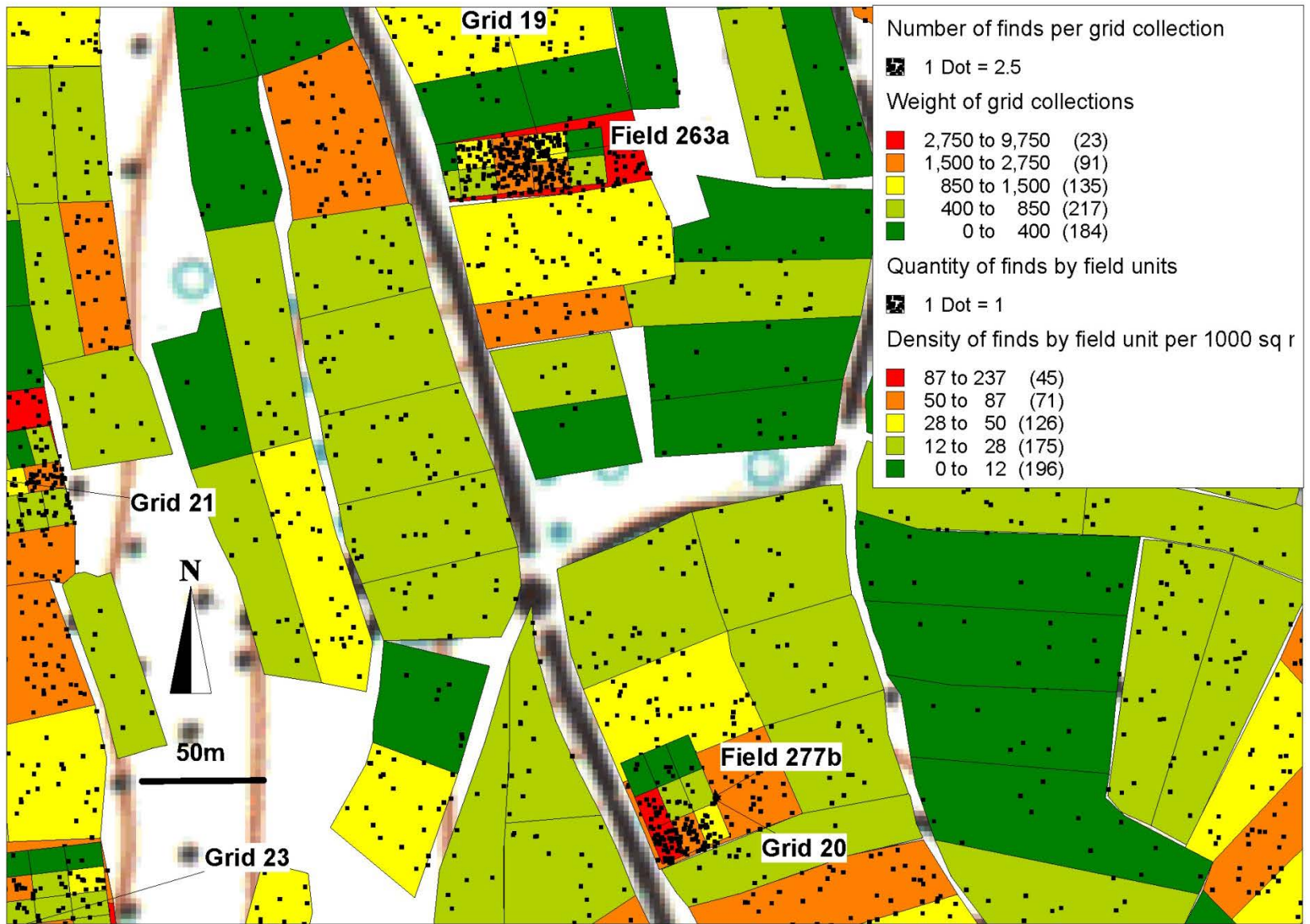
Map 28: Weight distribution of the total collections from grids 15-18 and 27



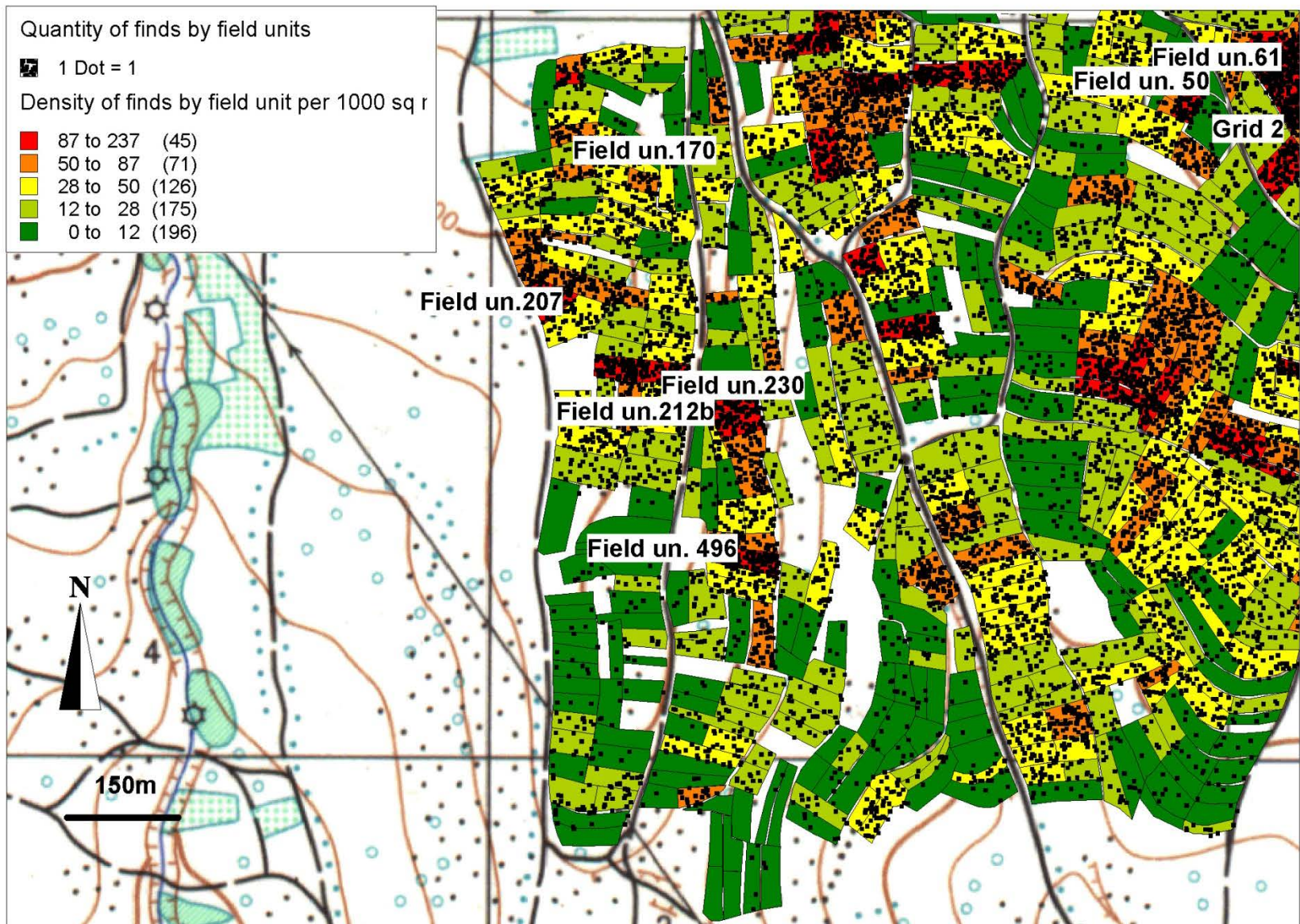
Map 29: Distribution of the overall surface record in the central and western survey sections, grid and transect



Map 30: Distribution of the overall surface record on grids 19 and 20, quantity ranges



Map 31: Weight distribution of the total collections from grids 19 and 20



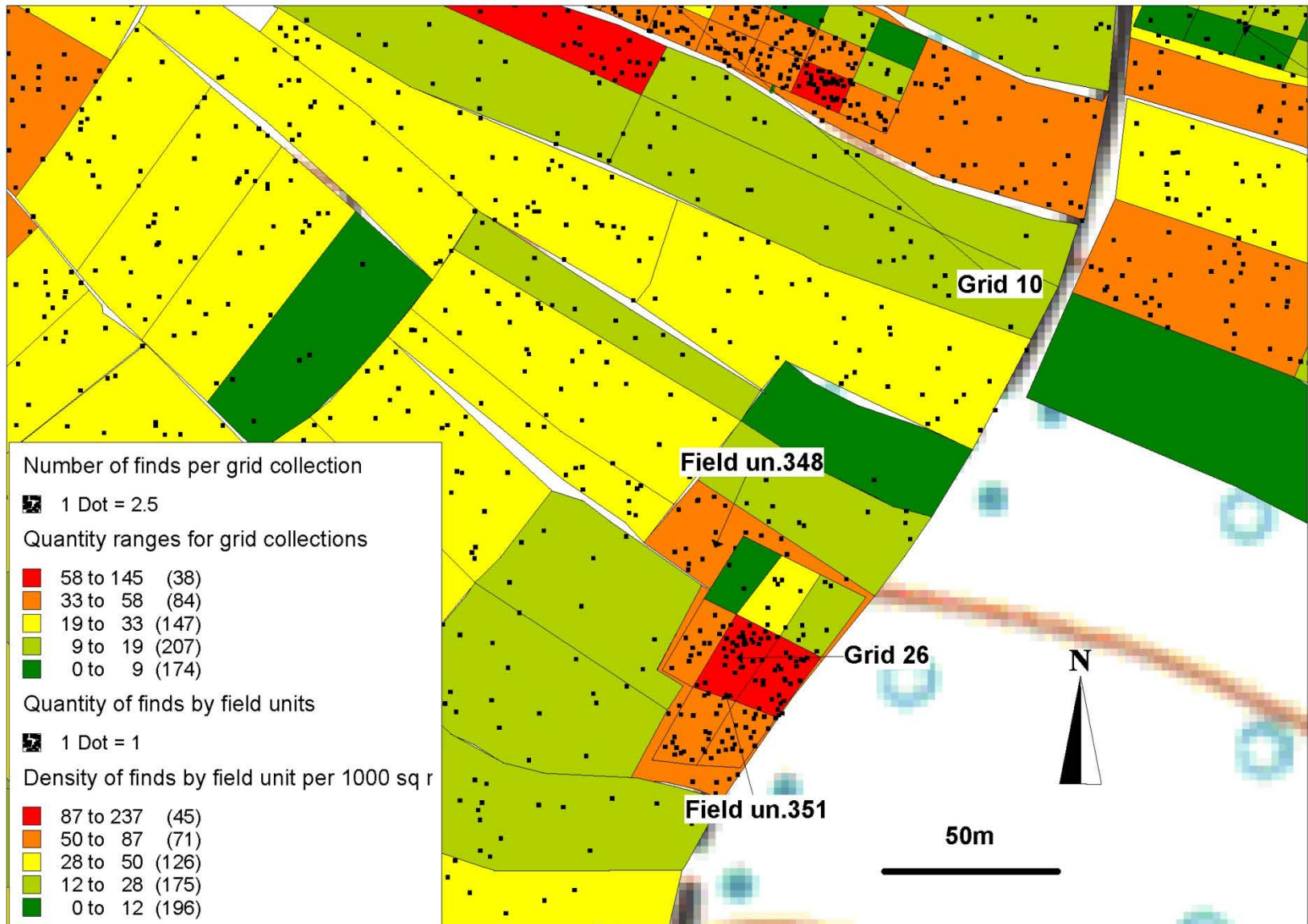
Map 32: Distribution of the overall surface record on the western ridge



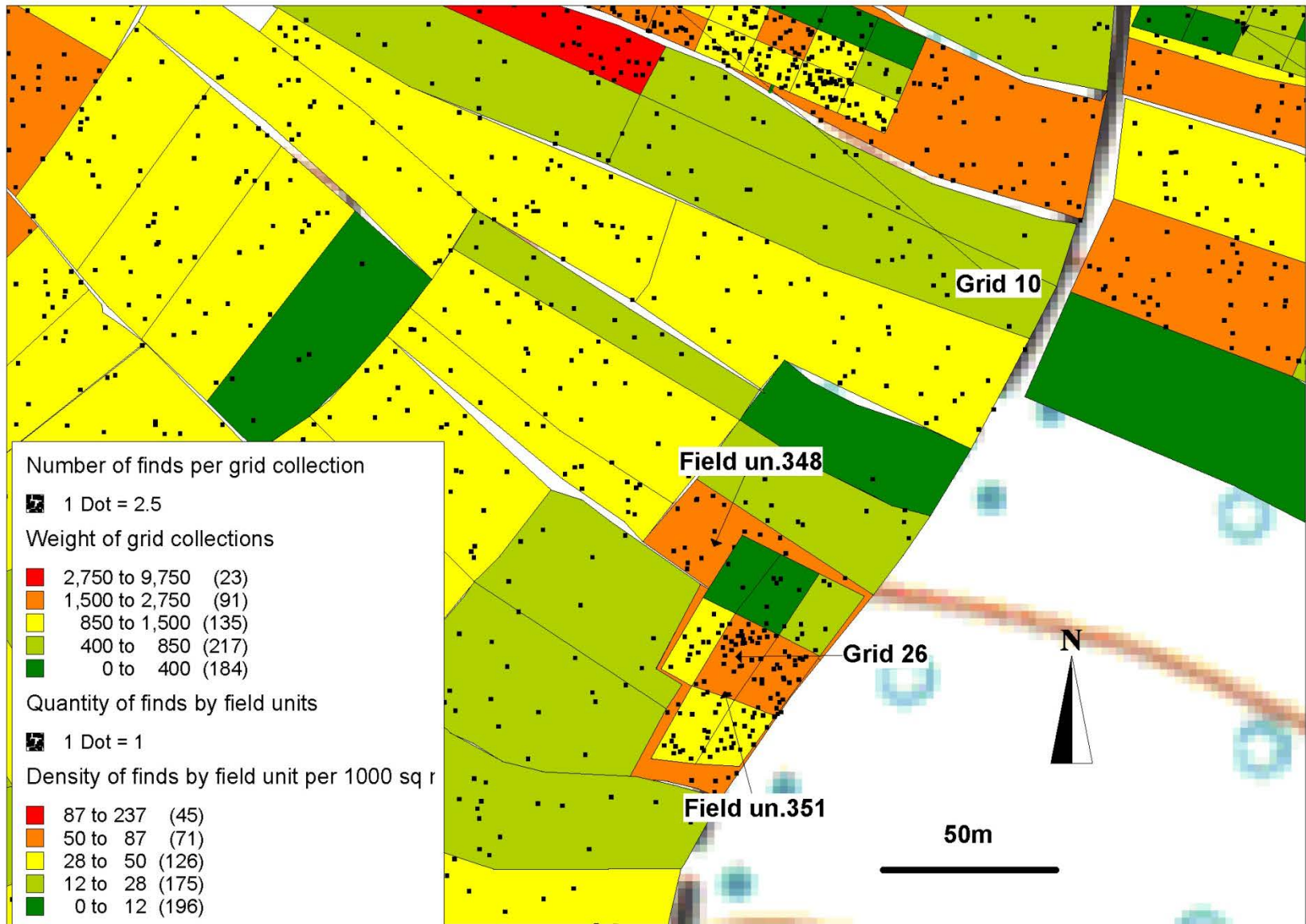
Map 33: Distribution of the overall surface record on grids 21-24 and the surrounding fields



Map 34: Weight distribution of the total collections from grids 21-24



Map 35: Distribution of the overall surface record on grid 26 and the surrounding fields



Map 36: Weight distribution of the total collections from grid 26



Map 37: Distribution of the overall surface record on grid 25 and the surrounding fields



Map 38: Weight distribution of the total collections from grid 25



Map 39: Distribution of artifact clusters in the survey area, red circles-certain, black circles-possible archaeological sites.